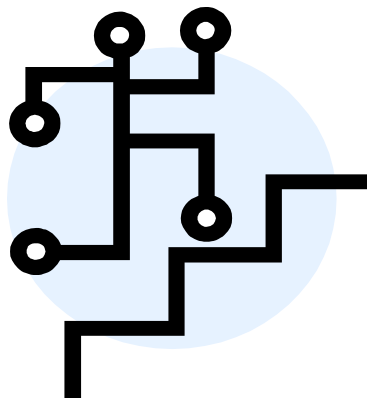




## Join Now & Save

ALA-SC is offering a special beginning of semester reduced membership rate of only \$7 if you join by September 19th. Remember, this is a one-time fee that covers you until your graduation from the LIS Program at UH Manoa. So go for it and start reaping the benefits!



*Hurry,  
offer expires*

*September 19, 2005*



## ALA-SC Fall 2005 American Library Association

University of Hawai'i at Manoa  
student chapter  
Est. Feb 4, 1992

President  
Lillian Nicolich

Vice President  
Lorraine Oribio

Secretary  
Janel Quirante

Treasurer  
Marta Wiggins

Faculty Advisor  
Andrew Wertheimer

Blotter Co-Editors  
Mona Kwon & Lori Ann Saeki

Web Czar  
Christian DeLay

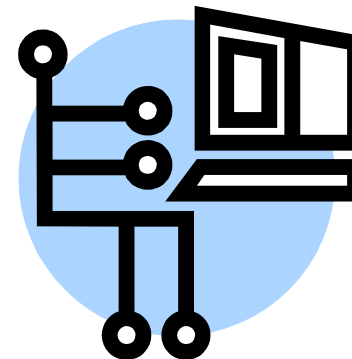
Mailing address:  
ALA-SC, c/o LIS Program, UH Manoa  
1680 East-West Road, POST 303A  
Honolulu, HI 96822  
Email: [alasc@hawaii.edu](mailto:alasc@hawaii.edu)



**AMERICAN LIBRARY  
ASSOCIATION —  
STUDENT CHAPTER**  
UNIVERSITY OF HAWAII AT MANOA

## Membership Application

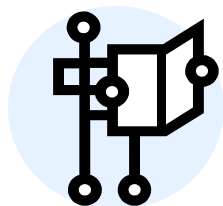
## FALL 2005



Website: [www.hawaii.edu/ala/](http://www.hawaii.edu/ala/)

Email: [alasc@hawaii.edu](mailto:alasc@hawaii.edu)

# American Library Association—Student Chapter



## ABOUT ALA-SC

*Get involved!* ALA-SC is the student chapter of the American Library Association at UH Manoa. Chapter membership is open to all students enrolled in the LIS Program. Following in the traditions of the national ALA, the UH student chapter each semester sponsors a stimulating professional program (e.g., brown bag talks by professionals), an active social program, a service project to benefit the greater library community, and various fund-raising activities to support these programs. The chapter also publishes a popular newsletter, the Basement Blotter.

ALA-SC Committee Chairs and members are able to hone their leadership and networking skills by organizing and participating in the various programs. These activities provide members with opportunities to work outside the classroom and to become familiar with issues of importance to the library profession.

Each year ALA-SC picks one student to go to the ALA annual conference as a student to staff representative, which covers hotel and conference fees in exchange for staff assistance. ALA-SC also annually recognizes one outstanding library professional with the Sarah K. Vann Service Award.

## COMMITTEES & ACTIVITIES

- **PROFESSIONAL PROGRAMS**  
*Help plan brown bag lectures & organize visits to local libraries..*
- **SOCIAL PROGRAMS**  
*Plan movies and social events for much needed R & R between classes.*
- **PUBLICITY**  
*Create and distribute flyers to publicize ALA-SC events.*
- **FUND RAISING**  
*Goal-oriented and creative? Show us the money!*
- **SERVICE**  
*Help the library community, make friends, and learn new skills, too.*
- **WEBSITE**  
*Help keep the website up-to-date and hone your technology skills.*
- **BASEMENT BLOTTER**  
*Love to write or take pictures? Not sure, but want to try it out? The Blotter needs reporters & photographers .*

## TELL US ABOUT YOURSELF:

NAME

EMAIL

TELEPHONE

TRACK (ACADEMIC, SPECIAL, PUBLIC, SCHOOL)

PREVIOUS JOB/DEGREE

EXPECTED GRAD. DATE (E.G., FALL 2006)

**MEMBERSHIP FEE: \$10 ONE-TIME FEE**  
(MEMBERSHIP GOOD UNTIL GRADUATION)

*Save – reduced rate  
of \$7 until Sept. 19th*

Paid: \$

For ALA-SC use only

Circle one: Check      Cash

Date:                      Init: