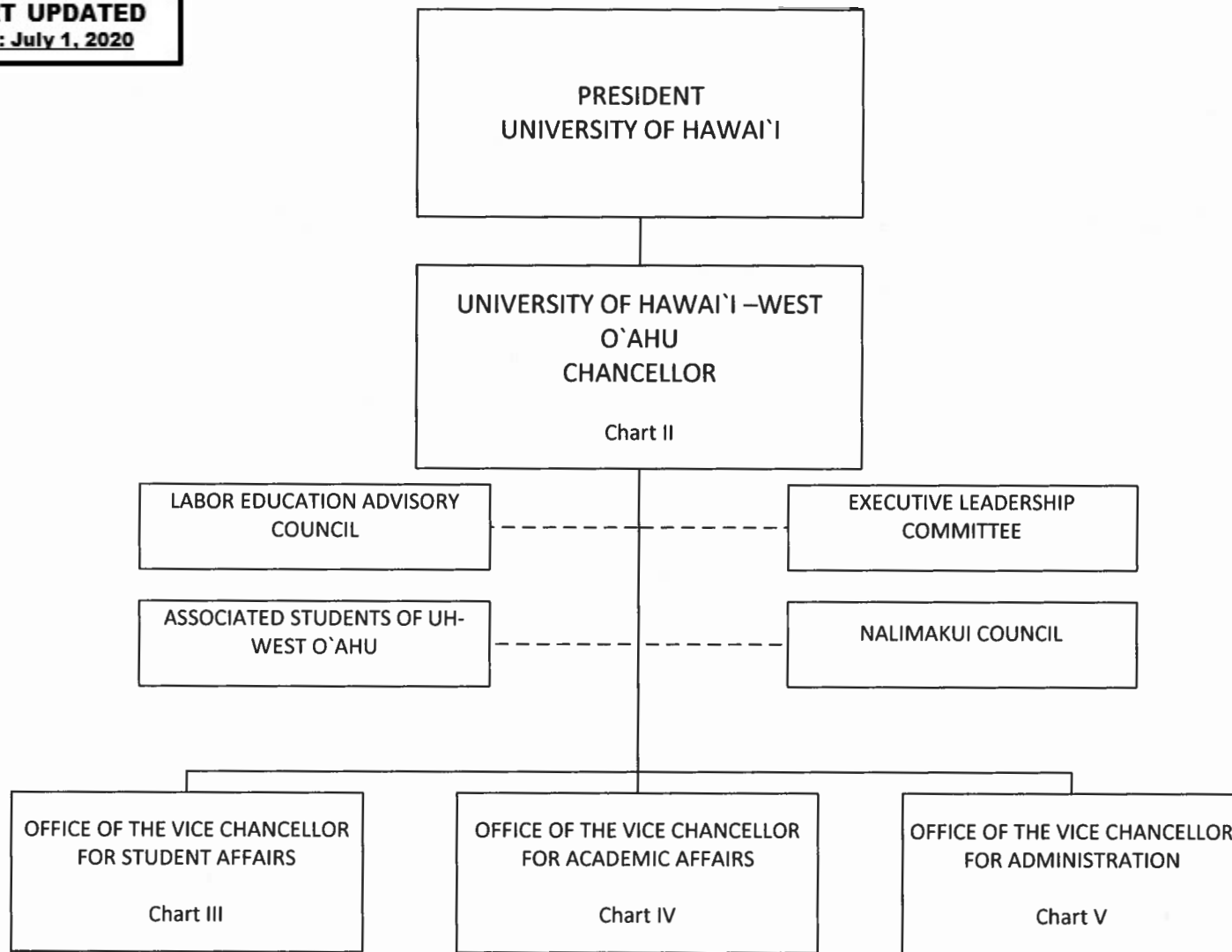


CHART UPDATED
DATE: July 1, 2020

STATE OF HAWAI'I
UNIVERSITY OF HAWAI'I
UNIVERSITY OF HAWAI'I – WEST O'AHU

POSITION ORGANIZATION CHART
CHART I



----- Dotted lines denotes advisory role

CHART UPDATED
DATE: July 1, 2020

STATE OF HAWAI'I
UNIVERSITY OF HAWAI'I
UNIVERSITY OF HAWAI'I – WEST O'AHU
OFFICE OF THE CHANCELLOR

POSITION ORGANIZATION CHART
CHART II

General Funds 10.00
++ Temporary Federal Funds 1.00

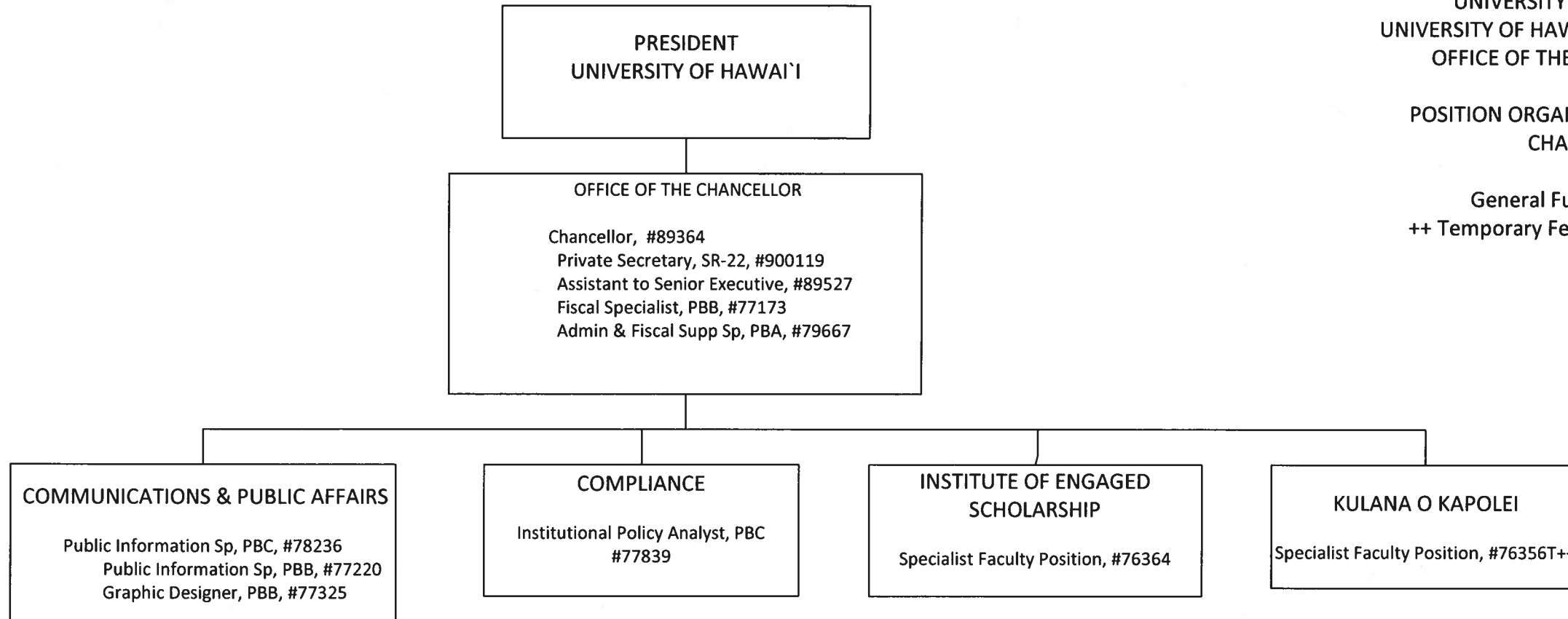


CHART UPDATED
DATE: July 1, 2020

OFFICE OF THE VICE CHANCELLOR FOR STUDENT AFFAIRS

Vice Chancellor, #89292
Instruc & Student Sup Sp, PBA, #78484

STATE OF HAWAII
UNIVERSITY OF HAWAII
UNIVERSITY OF HAWAII – WEST O’AHU
OFFICE OF THE VICE CHANCELLOR FOR STUDENT
AFFAIRS

POSITION ORGANIZATION CHART
CHART III

General Funds 37.00

DIVISIONAL & INSTITUTIONAL SUPPORT

UNIT LEAD (to be appointed from BOR
position)
Student Serv Sp, PBB, #81144
Admissions Sp, PBB, #81807
Specialist Faculty Position, #76346

ENROLLMENT SERVICES

Instruc & Student Sup Sp, PBA, #79821
Office Assistant IV, SR-10, #49249

ADMISSIONS

Admissions Sp, PBB, #78482
Admissions Sp, PBB, #78483
Admissions Sp, PBB, #80415
Admissions Sp, PBB, #78127

REGISTRATION & RECORDS

Registrar, PBB, #81836
Student Serv Sp, PBB, #77065

FINANCIAL AID

Financial Aid Mgr, PBC, #78125
Financial Aid Sp, PBB, #77645
Financial Aid Sp, PBB, #78126
Financial Aid Sp, PBA, #77350

STUDENT DEVELOPMENT

Specialist Faculty Position, #83711

ADVISING SERVICES

UNIT LEAD (to be appointed from
BOR position)
Academic Advisor, PBB,
#78485
Specialist Faculty Position,
#76347, #76348, #76350, #76377,
#76385

CAREER DEVELOPMENT

Specialist Faculty Position, #76303
Student Serv Sp, PBB, #80111

STUDENT LIFE

Specialist Faculty Position, #76354
Student Activities Off, PBB, #77164
Student Serv Sp, PBB, #77793

STUDENT ENGAGEMENT

Specialist Faculty Position, #76270
Student Serv Sp, PBB, #81221

NOEAU LEARNING CENTER

Specialist Faculty Position,
#76336, #76338, #76388

COUNSELING SERVICES

Specialist Faculty Position, #76298

DISABILITY SERVICES

Specialist Faculty Position, #76366

HEALTH & WELLNESS EDUCATION

Registered Nurse III, SR-18, #900911

STUDENT EQUITY & ACCESS

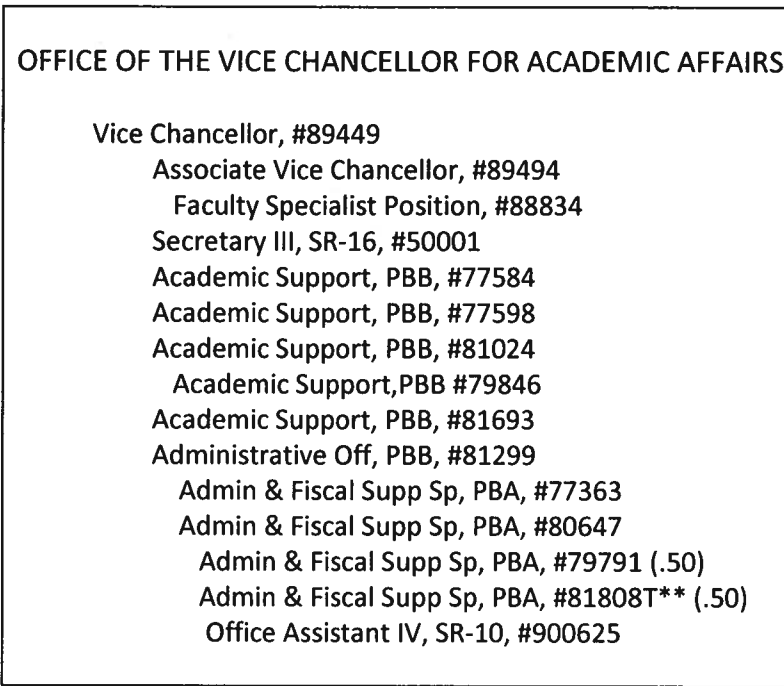
CHART UPDATED

DATE: July 1, 2020

STATE OF HAWAI'I
UNIVERSITY OF HAWAI'I
UNIVERSITY OF HAWAI'I – WEST O'AHU
OFFICE OF THE VICE CHANCELLOR FOR
ACADEMIC AFFAIRS

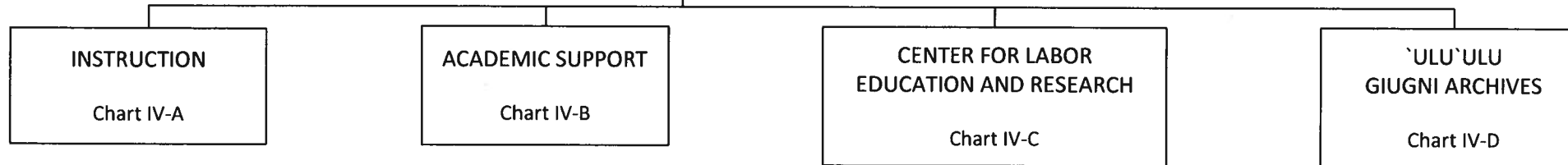
POSITION ORGANIZATION CHART
CHART IV

General Funds 13.50
**BT General Funds .50



1/

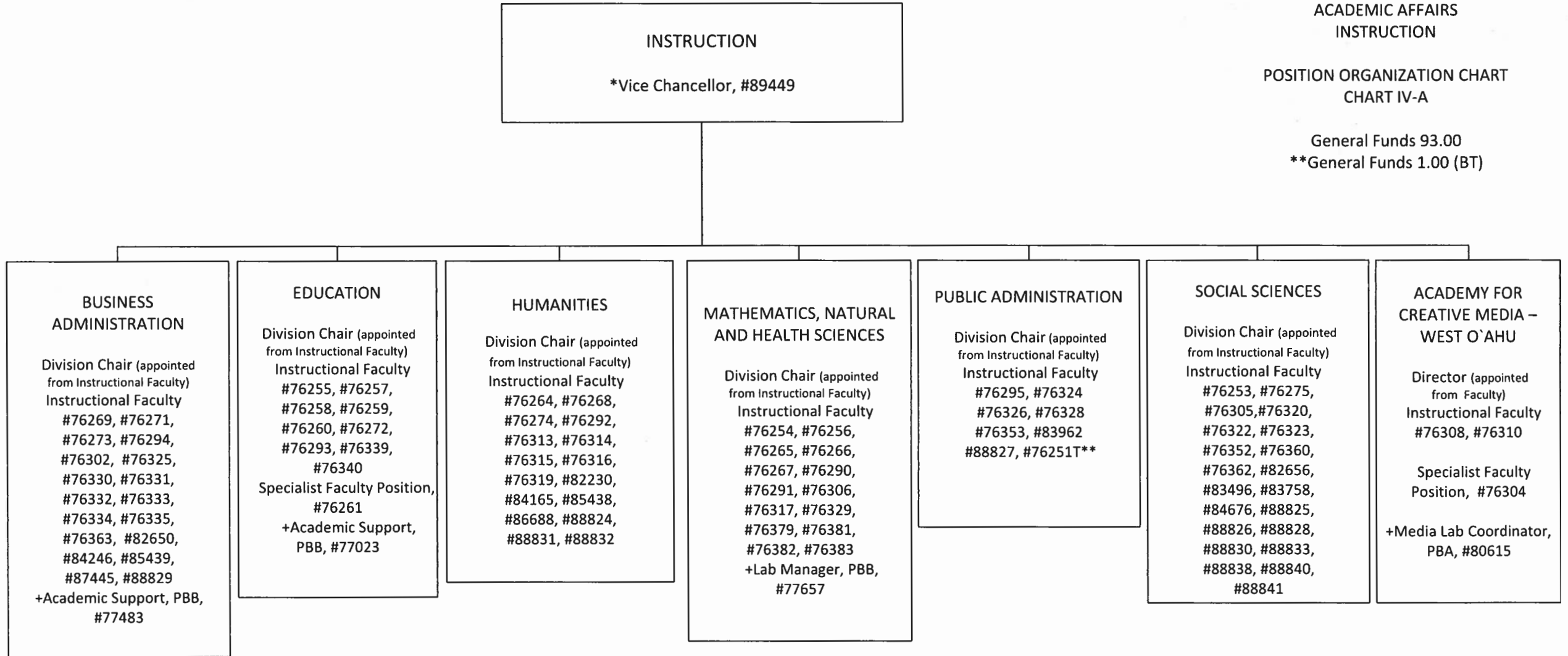
2/



**Budgeted temporary position .50 FTE, Special Funds .50 FTE

1/ Associate Vice Chancellor, #89494 in OVCAA also services as Director of Academic Support

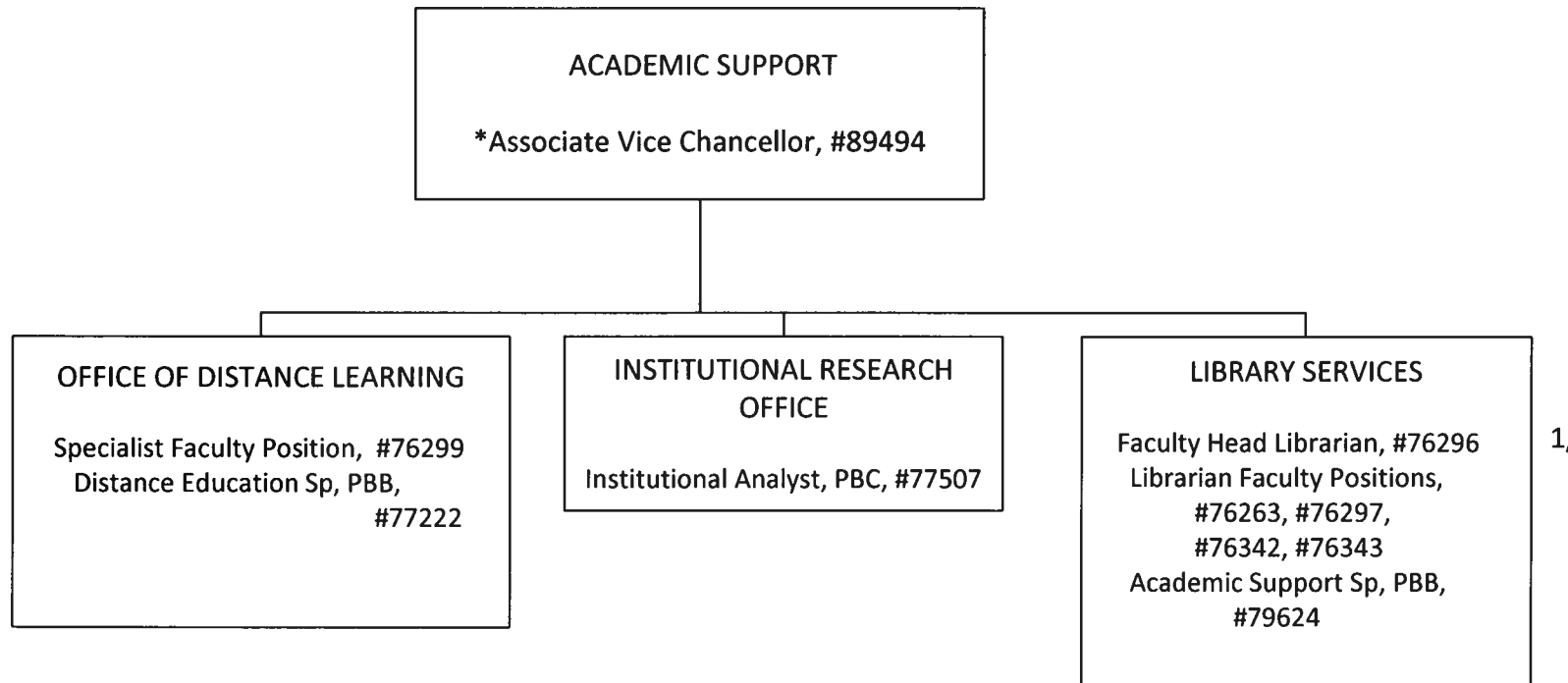
2/ position will be redescribed



*Position count not included on this page

+ Reports to Division Chair, Director, or assigned Department Coordinator

CHART UPDATED
DATE: July 1, 2020



STATE OF HAWAI'I
UNIVERSITY OF HAWAI'I
UNIVERSITY OF HAWAI'I – WEST O'AHU
OFFICE OF THE VICE CHANCELLOR FOR
ACADEMIC AFFAIRS
ACADEMIC SUPPORT

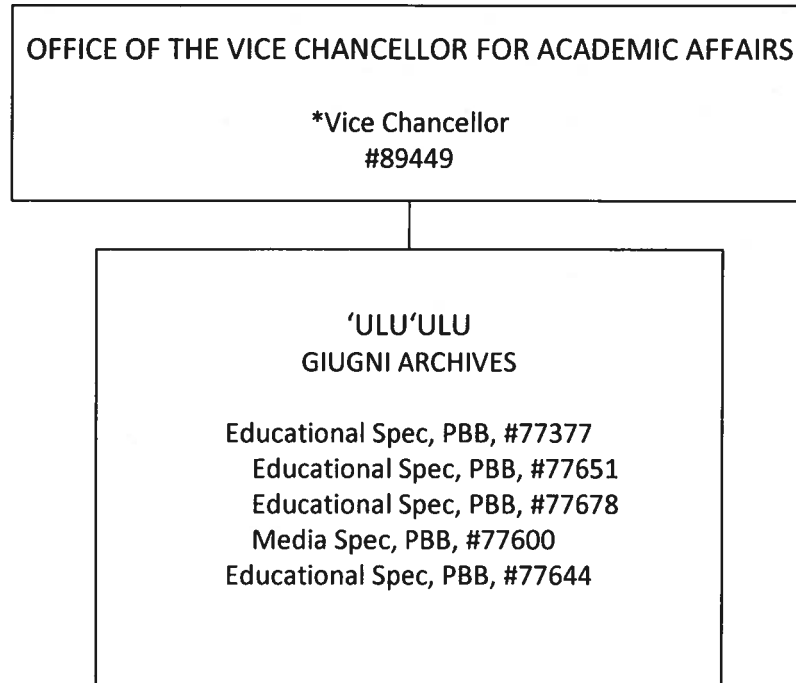
POSITION ORGANIZATION CHART
CHART IV-B

General Funds 9.00

*Position count not included on this page

1/ #76296 filled with temporary librarian, Interim Head Librarian appointed from librarian faculty position

CHART UPDATED
DATE: July 1, 2020



STATE OF HAWAI'I
UNIVERSITY OF HAWAI'I
UNIVERSITY OF HAWAI'I – WEST O'AHU
OFFICE OF THE VICE CHANCELLOR FOR
ACADEMIC AFFAIRS
'ULU'ULU
GIUGNI ARCHIVES

POSITION ORGANIZATION CHART
CHART IV-D

General Funds 5.00

*Position count not included on this page

CHART UPDATED
DATE: July 1, 2020

STATE OF HAWAII
UNIVERSITY OF HAWAII
UNIVERSITY OF HAWAII – WEST O'AHU
OFFICE OF THE VICE CHANCELLOR FOR
ADMINISTRATION

POSITION ORGANIZATION CHART
CHART V

General Funds 37.00

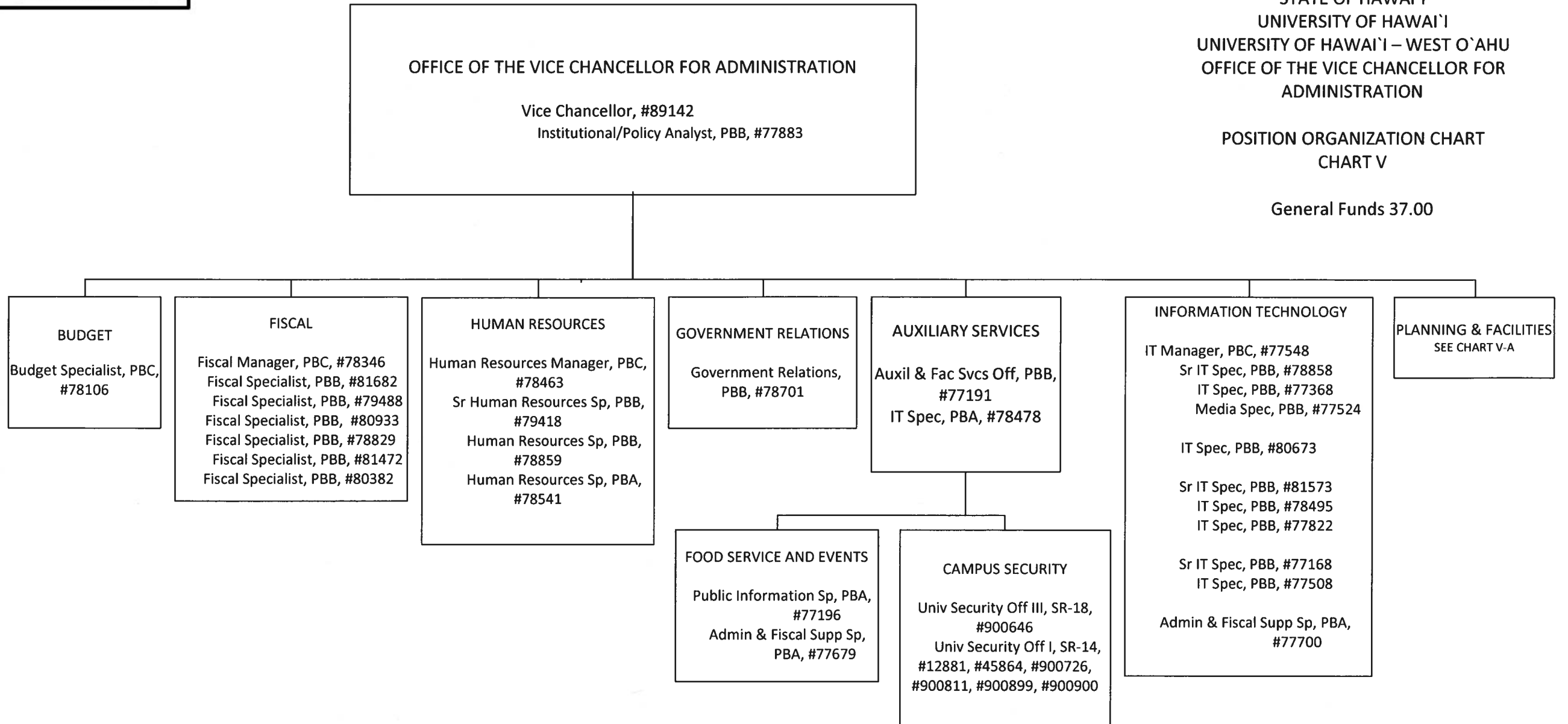
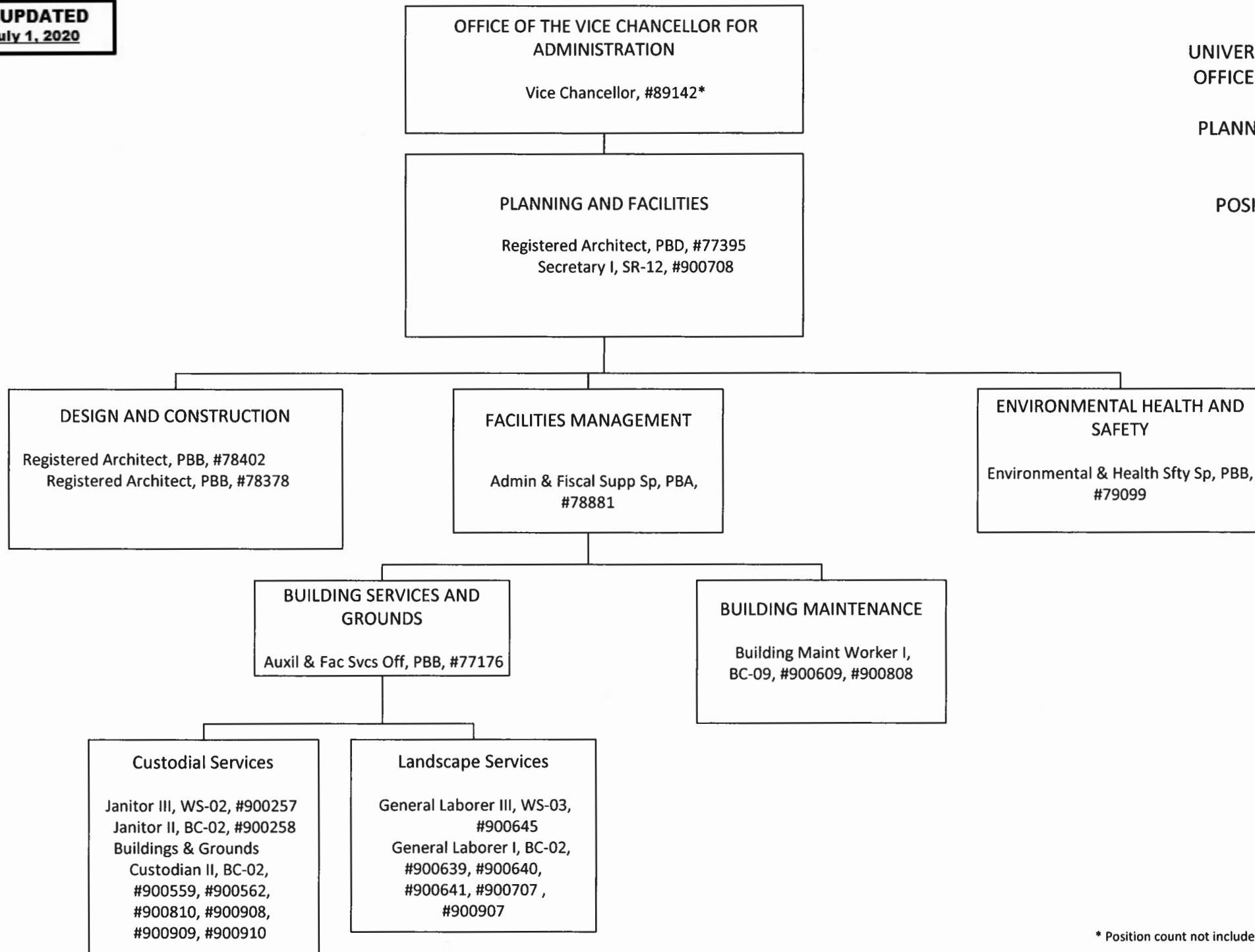


CHART UPDATED
DATE: July 1, 2020

STATE OF HAWAII
UNIVERSITY OF HAWAII
UNIVERSITY OF HAWAII – WEST O’AHU
OFFICE OF THE VICE CHANCELLOR FOR
ADMINISTRATION
PLANNING, CAPITAL IMPROVEMENTS
AND LAND OFFICE

POSITION ORGANIZATION CHART
CHART V-A

General Funds 23.00



* Position count not included on this page

+ Position to be redescribed