

UNIVERSITY OF HAWAII COMMUNITY COLLEGES

SPECIAL ANNIVERSARY EDITION • April 1999 • Volume 34, No. 3



Celebrating Learning



Celebrating Excellence



1964 - 1999



Joyce S. Tsunoda
Senior Vice
President and
Chancellor for
Community
Colleges

*“The UH
Community
Colleges have
grown and
changed
quite a bit in
these first 35
years. The next
35 years may
bring even
more exciting
and dramatic
changes.”*

My, how we’ve changed!

This year, we are commemorating the 35th anniversary of the signing of Act 39 by the late Governor John A. Burns. Act 39, passed by the Hawai‘i State Legislature on April 23, 1964, formally established the Community Colleges as part of the University of Hawaii system. According to this piece of legislation, the UH Community Colleges were created to “offer college parallel, technical and vocational education in different parts of the State so as to make higher education facilities more readily available to a greater number of high school graduates as well as to the community in general.” We have fulfilled that mission and much more. Today, the UH Community Colleges:

- are the largest sector of the UH System, providing education for more than 70% of its undergraduates.
- provide at least a portion of the education and training received by approximately 40% of UH baccalaureate graduates.
- educate much of the State’s workforce in more than 70 fields of study. UHCC graduates are at work in our communities as firefighters, health care workers, computer programmers, aircraft mechanics, legal assistants, etc.
- have graduates that are renowned doctors, attorneys, artists, novelists, chefs and TV celebrities.
- offer distance education in many formats. We pioneered the first interactive TV system to increase access to our educational programs and, more recently, we began offering

- courses through the Web and Internet.
- are recognized by educational colleagues across the nation, and are invited members of the League for Innovation in the Community College and other educational organizations.

In this publication, and throughout this special milestone year, we will recognize many of our alumni, faculty, staff, business and education partners who have helped us achieve success during the past 35 years.

Yet, our 35th anniversary celebration is also about embarking on the future...a future that is filled with change.

New teaching methods and technologies are changing the way people access education. A fast-paced, global economy is requiring people to develop new skills for the workplace. They often need retraining in new technologies in mid-career. The information age is breaking down geographical barriers and creating new communities of learners.

Our challenge is to find ways to meet the changing needs of the learners and the community. With the contin-

ued support of our valued friends, supporters and partners, the UH Community Colleges look forward to an exciting and successful future serving the people of Hawai‘i. 🌺



Chancellor Tsunoda began her career with the UH Community Colleges as a founder and chemistry instructor at Leeward Community College.

A CELEBRATION OF PARTNERS

Business Partners

The 35th anniversary party at the Sheraton Waikiki is a celebration of successes—successes that would not have been possible without the ongoing support and commitment of the many business, education and government organizations that believe in and endorse the mission of the UH Community Colleges.

The UH Community Colleges, which are recognized as one of the most innovative and advanced community college systems in the nation, are also indebted to the dedicated faculty, staff, students and alumni who have helped the colleges achieve so many important goals and successes during the past 35 years.

Some of these success stories are told within this newsletter. But it would be impossible to mention all of the people and organizations that have been instrumental over the years. Therefore, it is with much aloha that we extend our sincere appreciation to all who have become part of the UH Community College family as friends, supporters, staff and partners in providing affordable, quality education to all Hawai'i's people.

FRONT COVER PHOTOS
(clockwise from upper left) UH President Thomas Hamilton awards the first Associate in Science degrees in Hawai'i to Kapi'olani CC students in February 1967. Kaua'i CC's award-winning entry into Sunrayce in 1989. Emergency Medical Technicians prepare for recertification at Kapi'olani CC.

KONA-KOHALA CHAMBER OF COMMERCE

Hawai'i Community College Business Partner

The Kona-Kohala Chamber of Commerce actively supports Hawai'i CC and the new University of Hawai'i Center in West Hawai'i. The Chamber has been one of the primary supporters for the development of the University Center and has sponsored public meetings to assist the college in taking its message to the community. Kona-Kohala Chamber of Commerce members are frequently called upon to participate in Hawai'i CC's advisory groups. The Chamber is also a key force in Hawai'i CC's ongoing efforts to establish and build partnerships that bring the island's business and education communities together.

CREATIONS IN CATERING

Honolulu Community College Business Partner

Creations in Catering, the contracted food service provider at Honolulu CC for the past six

years, has become a partner with the college in offering quality food, creating successful events, and building the college's image. Creations in Catering continually produces innovative menus and responds to requests for changes. The caterer has also helped the college with special functions, eagerly taking on the unique challenges and menus required



Students rely on accessible, affordable education to attain their career goals. Partnerships with business help UH Community Colleges provide that education.

by the events. Creations in Catering has provided catering services to Honolulu CC's students and business partners, for fund-raising activities, and at other community events. The company's exemplary "can do" spirit has contributed to the positive image of the College and

continued on page 4

Business Partners

continued from page 3



Partnerships with the tourism industry businesses and associations are vital UH Community College programs such as culinary arts, travel and tourism, and hotel operations.

helped initiate new partnerships and friendships for the college.

OUTRIGGER HOTELS AND RESORTS

Kapi'olani Community College Business Partner

Outrigger Hotels and Resorts is not only an outstanding partner in Hawai'i's travel and tourism industry, it has been a long-time supporter of Kapi'olani CC. For many years, Outrigger has supported the Estelle Louise Kelley Scholarship Fund, which provides financial support for students in the food service and hospitality education program.

This year, Kapi'olani CC and Outrigger partnered to create the first annual "Cuisines of the Pacific," a three-day festival featuring the culture and cuisine of our Pacific Island neighbors. The part-

nership with Outrigger has been beneficial for the College's students, faculty and staff.

GROVE FARM

Kaua'i Community College Business Partner

Kaua'i Community College recognizes the vital role that Grove Farm Corporation has played from the very beginning for Kauai CC. The corporation's generous donation of 200 acres of land in Puhi gave the college a home capable of growing with the needs of the community.

Grove Farm's commitment to providing educational opportunities for

the residents of Kaua'i has also been demonstrated in day-to-day support. The company's recent assistance in the development of diversified agriculture at Kaua'i CC is just one example. As Grove Farm explores new business options, Kaua'i CC continues to partner with the company to develop new programs and courses needed to prepare the workforce that Grove Farm and other Kaua'i businesses will need.

ARMA-HAWAII

Leeward Community College Business Partner

The Association of Records Managers and Administrators (ARMA-Hawaii) has been a valued supporter of Leeward Community College and its business education division for many years. ARMA helped the College establish an Associate in Applied Science degree in records

and information management. Through service as guest lecturers, mentors, and advisors for the business education faculty, and through sponsorship of cooperative education worksites, ARMA has been a steadfast friend.

Last year, seeing the need to help the College maintain its technology, Brian Moriki of First Hawaiian Bank and past ARMA President, spearheaded a fund-raising campaign to equip a new computer lab. Through its partnership with ARMA, Leeward CC is building an educational infrastructure that will support new business developments.



Partnerships help to ensure that Community College students graduate with the skills and knowledge employers are looking for in today's high-tech, global marketplace.



Industry input is important to many educational programs. The Marine Education and Training Center at Sand Island is becoming a focal point for the state's boating industry.

opportunities for the community.

CARQUEST
Employment Training
Center Business
Partner

CARQUEST, an automobile parts distributor with several retail outlets on Oahu, has contributed in many very important ways to the automotive and auto body training at ETC. CAR-

QUEST has provided field trips for students focused on career options in the automotive and auto body industry. The company has also generously donated prizes for student award ceremonies and graduations. CARQUEST is a partner in the ETC/ Honolulu CC Auto Body Repair program advisory committee and has helped establish cooperative education sites for students.

In addition to this ongoing support, CARQUEST approached ETC to be a recipient of the profits of this year's annual car show. The money is earmarked for student scholarships, program equipment and professional development. CARQUEST's community spirit and commitment to Hawaii's future are evident in these generous acts.

ALEXANDER & BALDWIN, INC.

Maui Community College
Business Partner

Alexander and Baldwin, Inc., supports Maui CC through generous gifts and grants which spur community service and innovation. As a community service, A&B funds Maui CC's Community Resource Development Center to equip entrepreneurs with information and tools they need to succeed.

To support innovation at Maui CC, A&B also contributes matching funds to Maui CC's staff development fund. As A&B chairman, president and CEO John C. Couch stated, "Investing in the University is investing in our children's future."

KANE'OHE ROTARY CLUB

Windward Community
College Business Partner

The Kane'ohe Rotary Club has lent its support to campus clean-ups, the popular Papio Tournaments in Kane'ohe Bay, book drives and scholarships for students. Kane'ohe Rotary Club members have served on college accreditation committees, helped with fund-raising and worked as volunteers at Ho'olaule'a. This ongoing support helps create a vital network between business leaders in the area and the Windward CC students—the future leaders of the Windward community. The Kane'ohe Rotary Club partnership with Windward CC exemplifies the organization's commitment toward educational and economic



Mahalo to the sponsors of our 35th anniversary celebration.

GOLD SPONSORS



ALEXANDER & BALDWIN
FOUNDATION



Servco Foundation

SILVER SPONSORS

Bank of Hawaii
Kyo-ya Co. Ltd./
Sheraton Hotels in
Waikiki

BRONZE SPONSORS

Hawaii Joint Apprenticeship
Committee for the
Sheet Metal Industry
Hawaii Newspaper Agency

In celebration of this milestone year, the emblem in jade and coral, colors which signify the 35th anniversary, will be used throughout the year.

Education Partners

BUSINESS-EDUCATION PARTNERSHIP

*Hawai'i Community College
Education Partner*

The Business-Education Partnership (BEP) is an alliance of business and education committed to excellence in education, working to support our Department

schools. Hawai'i CC works with the BEP in several ways. The Provost and the Dean of Instruction serve on the Board of Directors for the BEP to link the community college into the process, and School to Work activities are coordinated through the BEP.



Whether our graduates go on to baccalaureate degree institutions or enter the job market, the internships, scholarships, advisory committees, and mentorships provided through business and education partnerships are important to their success.

of Education (DOE) schools. The purpose of the BEP is to infuse business needs and expectations into the school curriculum to assure that high school graduates receive the academic and employability skills necessary for gainful employment. The BEP provides incentive, support and motivation. Business partners serve as speakers and role models; they provide internship sites, and actively raise funds for

CISCO SYSTEMS, INC.

*Honolulu Community College
Education Partner*

Cisco Systems, Inc. represents a unique model for training in networking technologies. One of the world's largest computer-technology companies, Cisco Systems realized the importance of providing education in technology to America's youth. The company developed the Cisco Networking Academies to bring that

technology to high schools via hands-on computer labs. Honolulu CC eagerly embraced the partnership opportunity last year. Since then, Honolulu CC has become actively involved with area high schools through training of their teachers and supporting their local academies. The curriculum Cisco provides represents the latest in network technologies and is constantly updated, helping Honolulu CC and the State of Hawai'i keep abreast of changes.

Through Cisco's dedication to provide a workforce for tomorrow's technologies, Honolulu CC is now part of an invaluable partnership between industry, higher education and high school students.

RETAIL MERCHANTS OF HAWAII

*Kapi'olani Community
College Education Partner*

The Retail Merchants of Hawai'i, a statewide association of retailers and related businesses, has been very supportive of Kapi'olani CC. Retail Merchants of Hawai'i has worked closely with Kapi'olani CC's non-credit business coordinators to develop a curriculum to help its members get training. The association has been instrumental as a

partner in the Waikiki Lifelong Learning Center, bringing important educational and skill advancement training to a convenient location.

The association has also been a consistent advisor on the training needs of Hawai'i's retail industry. Collaboration with the Retail Merchants has led to the development of a successful retail Japanese training series and other programs. In essence, the Retail Merchants of Hawai'i partnership with Kapi'olani CC keeps our retail industry workers up-to-date with the skills and training needed to compete in today's competitive marketplace.

ANTONE & EDENE VIDINHA CHARITABLE TRUST

*Kaua'i Community College
Education Partner*

Antone "Kona" Vidinha, Jr. was the sheriff for Kaua'i's Koloa district and later became captain of its police force, chairman and chief executive of Kaua'i County, and Mayor of Kaua'i. Vidinha's wife, Edene, was born and reared in Koloa and became a teacher. Throughout their lives, the Vidinhas gave generously to local charities. Upon their death, the Antone & Edene Vidinha Charitable Trust was established to continue their legacy.

The A. & E. Vidinha Charitable Trust, adminis-



Partnerships help provide the hands-on experience and base of support that learners need—as they move from high school to college and from college to career.

tered by the Hawaiian Trust Company Ltd. has, over the years, given scholarships in excess of \$500,000 to Kaua‘i CC students. Through this trust, the Vidinhas’ commitment to Kaua‘i’s people is sustained.

‘OLELO: The Corporation for Community Television

Leeward Community College, Education Partner

Since 1991, ‘Olelo: The Corporation for Community Television has been an active partner with Leeward CC in their shared mission to foster educational opportunities and build communities. With generous assistance from ‘Olelo, Leeward CC, along with the other O‘ahu community colleges, has become a major producer of credit instructional television programming broadcast over ‘Olelo’s channels. This programming has made college more accessible to both O‘ahu and neighbor-

island residents.

Leeward CC also serves as an ‘Olelo satellite production center for the general public. Together, through training, production assistance, and access to high quality production equipment and facilities, ‘Olelo and Leeward CC give the people of O‘ahu a television window on the rich diversity, artistry, and intellect of our community.

COUNTY OF MAUI

Maui Community College Education Partner

The County of Maui, its executive and council leadership, have long supported higher education. During Mayor Hannibal Tavares’ term, Maui CC was given a long-term lease for land upon which the College’s dormitory complex stands today. During Mayor Linda Lingle’s term, Maui CC was given funding to develop Maui CC’s Visitor Industry Training and Education Center (VITEC) and the University of Hawai‘i

Center. Presently, the partnership between the County of Maui and Maui CC continues with Mayor James “Kimo” Apana and the Maui County Council, with a focus on economic and workforce development. Through its support of Maui Community College, the Maui County Council shares the mission of providing resources to meet the Maui community’s highest expectations.

WINDWARD DISTRICT OFFICE, DEPARTMENT OF EDUCATION

Windward Community College Education Partner

The Windward District Office of the Department of Education has worked closely with Windward CC in organizing workshops involving teachers from area high schools. Efforts by the department have made the improvement of reading, writing and math skills a priority. The Windward District Office has also been a strong advocate of School-To-Work initiatives and a supporter of the new COMPASS testing system.

The result of this partnership has been better communication and coordination for everyone involved, with students as the ultimate winners.

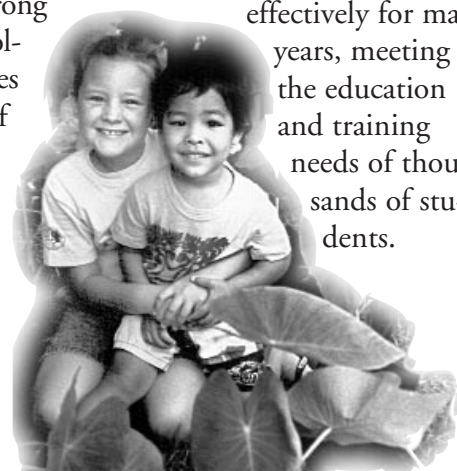
WORKHAWAI‘I

Employment Training Center Education Partner

Sharing a common mission while providing different services has resulted in seamless facilitation for Hawai‘i residents entering Employment Training Center (ETC) programs. The City & County of Honolulu, Department of Housing and Community Development is responsible for services provided under the Job Training Partnership. WorkHawai‘i is one of those services.

WorkHawai‘i performs eligibility determination and caseload management for people in need of educational and employment opportunities. ETC provides the education and training. Together, the two agencies assist economically disadvantaged students in becoming productive, self-sufficient citizens of our community. This partnership has been growing and working effectively for many

years, meeting the education and training needs of thousands of students.



Windward CC’s annual Taro Festival is a prime example of how partnerships with business and education help bring educational events to the community.

Launching Leaders

When Governor John A. Burns signed the Community College Act, he envisioned accessible, quality education for all Hawai'i's people. Today, the UH Community Colleges enroll more than 80,000 people in credit and noncredit programs annually, and have touched the lives of hundreds of thousands of people during these past 35 years. Many of the students who chose the UH Community Colleges as their gateway to success are now leaders in their professions and communities. In commemoration of UH Community Colleges' 35th anniversary, we salute all alumni and students for their contributions in making Hawai'i a special place to live and work.



A special mahalo to Leeward CC grad and 35th anniversary celebration emcee, Emme Tomimbang.

Emme Tomimbang

*Television Producer, Emme's Island Moments, and owner of Emme Tomimbang Multi-Media Enterprises, Inc.
Leeward Community College*



Tina Shelton

*News Anchor and Reporter, KITV-4
Kapi'olani Community College*



Tiny Tadani

*Executive Producer, Oceanic Cable
Weather Reporter, KITV-4
Windward Community College*

Thomas Wong
*Executive Chef
Royal Hawaiian Hotel
Kapi'olani Community College*



A. Frenchy DeSoto
*Board of Trustee
Office of Hawaiian Affairs
Leeward Community College*



Veronica Loke Yamanoha

*Counselor, Maui CC Employment Opportunity
Maui Community College*

Russell Yamanoha

*Sports Reporter and
Video Journalist, KHNL News
Maui Community College*



Ann Kagan

*Owner, Ann K. Kahala Fashions
Honolulu Community College*



Dr. Lorraine Sonoda-Fogel
*Internal Medicine
Kapi'olani and Honolulu
Community Colleges*



Stephanie J. Castillo
EMMY-awarded film-maker

Kaua'i Community College



Steven Ariel

*Sous Chef,
Alan Wong's Restaurant
Hawai'i Community College*



Dr. Melinda Domenden Santhany

*Physician, Pediatrics
Kaua'i Community College*



Bill Mossman

*Editor, Sun Press
Windward Community College*



Howard Kam
President,

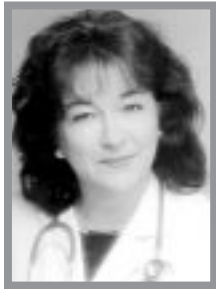
*Horwath Kam and Company
An Accountancy Corporation
Leeward Community College*



Gwen Nicolas, CPS, ALS
*Secretary, HSC, Inc
Hawai'i Community College*



Attilio K. Leonardi
*Fire Chief,
 Honolulu Fire
 Department
 Honolulu Community
 College*



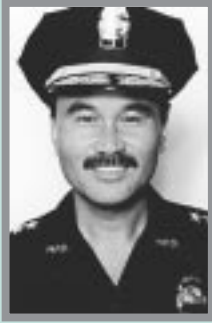
Dr. Patricia Blanchette
*Physician, Gerontology
 Professor of Medicine, John A. Burns
 School of Medicine, UH Manoa
 Leeward Community College*



James McDonald
*Executive Chef,
 Pacific 'O Restaurant
 Maui Community College*



Georgina Kawamura
*Organizational System Officer,
 County of Maui
 Maui Community College*



Michael Nakamura
*Instructor,
 Honolulu CC
 Retired Chief
 of Police, City
 & County of
 Honolulu
 Honolulu
 Community
 College*

1999 University of Hawai'i Distinguished Alumni Award

The University of Hawai'i Distinguished Alumni Award is one of the most prestigious awards a UH graduate can receive. It recognizes outstanding former students of the University of Hawai'i system. Michael Nakamura has been selected for this honor in 1999. Nakamura, a Honolulu CC graduate and now a lecturer at the college, joins several other alumni, faculty and staff of the UH Community Colleges who have received this honor over the years, including:

Tina Shelton	1989
Stanton Ho	1990
Joyce Tsunoda	1990
Sharon Narimatsu	1991
Dr. Patricia Blanchette	1992
Dewey H. Kim	1994
Richard Kosaki	1996

The 1999 UH Distinguished Alumni Awards Banquet takes place May 26, 1999. Please call 956-6934 for information and reservations.

Our future looks bright!



Some very talented students appeared recently on Hawaii Stars and at the anniversary celebration. Shown above with Kimo Kahoano and Carole Kai are (l to r) Maui CC student James Price, Windward CC student Ronda Rapozo, Leeward CC student Maka Ancheta, Kauai CC student Meredith Bean and ETC student Llewelyn Chun.

The student enrollment at the UH Community Colleges closely reflects the cultural diversity of our state. The colleges attract many non-traditional students, women and minorities, who are often underrepresented in colleges. Yet, no matter what their background, age or career goals, our students flourish in the nurturing atmosphere of our colleges. In fact, 40% of the UH Manoa baccalaureate degrees awarded go to students with community college backgrounds.

Our students are award-winners, too. In 1998, two UH Community College students were named to the All-USA Academic Team for Community and Junior Colleges. They join a growing list of students who have received academic awards. 1999 marks the second year that Maui CC culinary arts students returned home with a medal from the American Culinary Federation regional competition in Las Vegas. Kapi'olani CC radiologic technology students consistently achieve some of the highest scores in the nation on the American Registry of Radiologic Technologists exam.

These successes also say quite a bit about the quality of education students receive, the dedication of our faculty, and the commitment of alumni, business and education partners in providing educational opportunities for Hawai'i's future leaders.

Our faculty and staff

The faculty of the UH Community Colleges are as diverse as the student population. Yet, they all have one thing in common—a commitment to providing the best education possible for each community college student. Our award-winning faculty and our dedicated support staff help our educational programs and students win awards and gain recognition on a national and international basis. Not only that, they make a difference in the individual lives of many people in Hawai'i every year. That is not an easy feat in these rapidly changing times, when the classroom may be a TV screen on a neighbor island, the student may be returning to school after 20 years in the workforce, and the syllabus is posted on the Web.

As we celebrate this special milestone, we would like to salute these special individuals who are founders of some of our campuses and who have been with the UH Community Colleges since their creation.

Throughout the many years of change, you have remained steadfast in your dedication.

We thank you for your long years of service to the students, to your campus, and to the UH Community College system.

STAFF WITH 35 YEARS OF SERVICE AND COMMUNITY COLLEGE FOUNDERS

Mazie Akana
Ethel Anbe
Helen Baligad
Robert deLoach
David Denison
Takako Desaki
Jacqueline Fochtman
Laraine Ito
Harriet Kamei
Florence Kepilino
Amy Kurata
Sandra Lai
John Michalski
Philip Moore
Jacqueline Maly
Carol Nagano
Janice Nuckols
Norman Okimoto
Barbara Saromines-Ganne
Jane Sasahara
Jean Shibuya
Elaine Shikuma
George Shiroma
Katsugi Tamanaha
Joy Tanabe
Carolyn Tani
Jackson Tsujimura
Joyce Tsunoda
Stanley Uyemura
Ralph Vaughn



Mahalo to Hawai'i CC faculty Pualani Kanabele, Edward Kanabele, Rosemary Burnett, Kekuhi Kanabele-Frias and Kaipo Frias, and the students of Hawai'i CC's Hawaiian Studies program who performed at the 35th anniversary.

Pualani Kanabele (above), regarded as a cultural treasure, is an instructor of Hawaiian Language and Studies at Hawai'i CC, and has been with the UH system since 1985. Hawaiian Studies students and faculty perform the traditional chants and dances honoring Pele and her creative forces. These students form the first troupe representing HawCC and will participate in the Indigenous People's Conference co-hosted by Hawai'i CC on the Big Island this summer.

Participating in college fairs remains an important tool to inform high school students about the more than 70 programs offered at the Community Colleges.



EXCELLENCE IN EDUCATION

The 16th annual Excellence in Education Conference is an integral part of this year's 35th anniversary celebration. The Excellence in Education Conference, born from a discussion that took place in a small kitchen in Kalihi Valley in 1973, has grown to exemplify the UH Community Colleges' commitment to excellence.

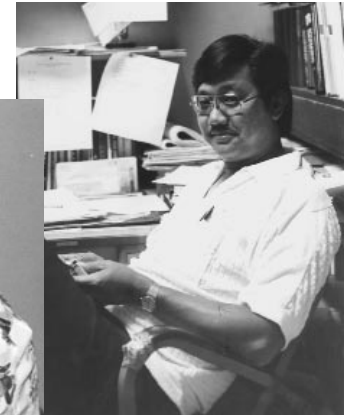
The concept of the conference emerged when Leeward CC faculty members, Larry Fujinaka and Dennis Kaibara, were sitting at Larry's mother's kitchen table. In their discussion of ways to enliven Leeward CC through professional development, they came upon the idea of hosting a conference, and the Excellence in Teaching Conference came to be.

The conference soon grew into an ideal model for bringing together colleagues from across the system to celebrate and enhance ways in which the UHCCs excel in teaching and learning.

In 1990, during the UHCC's 25th Anniversary, the conference was renamed "Excellence in Education" to emphasize how teaching and non-teaching staff work together in all aspects of education.

Today, the conference annually attracts about one thousand UH Community College colleagues and is a vital part of the UH Community Colleges' professional development program.

A glimpse into the past



From top right
Windward CC Dean Michael Garcia (1980), Chancellor Dewey Kim (1981), Windward CC students (1972), Leeward instructor Karen Wilson with student (1986) Hon CC raft race Kon Leaky crew Joanne Clarke, Peter Kessinger and Don Bourassa among others (1982), Kap CC Provost John Morton (1979), Chancellor's staff members Nora Matsubara, Janyce Miyashiro, Beverly Jim On, Kathleen Yahiku, and Lianne Tong (1987).





UNIVERSITY OF HAWAII
COMMUNITY COLLEGES

Yesterday and today

In 1964, the Legislature passed the Hawai'i Community College Act directing the University's Board of Regents to develop and administer a system of Community Colleges. Enrollment for the first year was 1,987, and increased dramatically every year for several years as people began to take advantage of the great educational opportunity that had opened up to them. By 1968, enrollment had grown to 5,494 and in 1970 it reached 10,568.

During this rapid period of growth, Leeward, Hawai'i, and Windward Community College as well as the Employment Training Center, joined the four initial campuses—Maui, Kapi'olani, Honolulu and Kaua'i Community Colleges.

These eight complementary institutions, although quite different in their programs and atmosphere, are all dedicated to the mission of providing affordable and accessible, quality education to all Hawai'i

residents.

In the early days, much of the planning and growth focused on upgrading facilities, developing college transfer programs, and expanding vocational programs to meet the rapidly expanding enrollment.

In the early '70s, the UH Community Colleges recognized

media support were initiated.

During the '80s, the Community Colleges realized they must modernize and change to meet the new global challenges and increased complexity of our society. Distance education, international exchanges, retraining programs and customized training for businesses were added to the curriculum.

The '90s brought about new partnerships with businesses, educational agencies and community organizations that have helped the Colleges in their efforts to provide workforce development and meaningful education and career opportunities.

With the 35th anniversary, the UH Community Colleges' multiple role as vocational transfer, general, re-training and remedial education institutions will continue to challenge and move the campuses forward. Many special events planned for the milestone year will help

communicate the Colleges' commitment to excellence in providing vital life-long learning opportunities to Hawai'i's people. 🌿



The first Chancellor, Richard Kosaki, talking with a student above, stated in the first faculty-staff memo for the UH Community Colleges, "Ours is a responsibility which is also a challenge; we have the important task of expanding educational opportunity in our communities."

their need to work more closely as a system. Educational guidelines were developed, standards of instruction were incorporated, and library and



UNIVERSITY OF HAWAII
Community Colleges

Island of O'ahu

Honolulu Community College
Kapi'olani Community College
Leeward Community College
Windward Community College
Employment Training Center

Island of Hawai'i

Hawai'i Community College

Island of Kaua'i

Kaua'i Community College

Islands of Maui,
Moloka'i & Lana'i

Maui Community College

University of Hawai'i
Office of the Chancellor for Community Colleges
2327 Dole Street
Honolulu, Hawai'i 96822

ADDRESS SERVICE REQUESTED

Non-Profit Org.
U.S. Postage
PAID
Honolulu, HI
Permit No. 278