

PROJECTED TRENDS IN ENROLLMENT
UNIVERSITY OF HAWAI'I AT MĀNOA
FALL 2017 TO FALL 2022

Institutional Research and Analysis Office
University of Hawai'i System
January 2017

**PROJECTED TRENDS IN ENROLLMENT
UNIVERSITY OF HAWAI‘I AT MĀNOA
FALL 2017 TO FALL 2022**

TABLE OF CONTENTS

Narrative

Graphs

Figure 1	Recent and Projected Headcount Enrollment
Figure 2	Headcount Enrollment Index
Figure 3	Historical Headcount Enrollment
Figure 4	Projected Enrollment with High and Low Series
Figure 5	First-Time Freshmen by High School of Origin
Figure 6	Classified Undergraduate Transfers by Previous College
Figure 7	Classified Undergraduate Returning Enrollment
Figure 8	Classified Undergraduate Continuing by Education Level
Figure 9	Classified Graduate Enrollment by Degree Type
Figure 10	Master’s Degree and Research Doctorate Enrollment
Figure 11	Unclassified Enrollment
Figure 12	Full-Time as a Percentage of Total Enrollment

Tables

Table 1	Headcount Enrollment by Academic Level and Student Type, Fall 2011 to Fall 2022
Table 2	Headcount Enrollment by College and Academic Level Fall 2011 to Fall 2022

TABLE OF CONTENTS (CONT.)

Table 3	Student Semester Hours Offered by College, Fall 2011 to Fall 2022
Table 4	Full-Time Equivalent Course Enrollment Served by College, Fall 2011 to Fall 2022
Table 5	Headcount Enrollment by Attendance Status, Fall 2011 to Fall 2022

Appendices

Appendix A	Hawai'i Public High School Seniors by School District, Academic Years 2010-11 to 2021-22
Appendix B	Hawai'i High School Graduates, WICHE Historical and Projected – 2016 Series

PROJECTED ENROLLMENT TRENDS UNIVERSITY OF HAWAI'I AT MĀNOA FALL 2017 TO FALL 2022

INTRODUCTION

This report presents information on historical and projected headcount enrollment at the University of Hawai'i at Mānoa. The projections are statistical extrapolations of current trends in enrollment. In general, they neither set enrollment targets nor take into consideration planned or potential changes in University policies or procedures. They should be considered as an extension into the future of current enrollment trends and may be used as a foundation for further work in the planning and budgeting processes. They are based upon unduplicated headcounts of students enrolled in credit courses. Included are classified students enrolled in degree programs, as well as unclassified students.

The projection reports also make use of a time series analysis, conducted by UH IRAO staff, which incorporates a variety of economic and demographic factors. This model has been used to guide and validate the standard model projection methodology. (Detailed information on the time series analysis is available as a separate publication.)

Historical data shown in the charts and tables were extracted from the student enrollment, academic crossover and course registration data files. Information on Hawai'i public high school seniors was provided by the State of Hawai'i Department of Education. Information on Hawai'i public and private high school graduates was obtained from the Western Interstate Commission for Higher Education (WICHE).

METHODOLOGY

Enrollment data are divided into three broad groups of students: classified undergraduate, classified graduate and unclassified. Classified undergraduate enrollment is sub-divided by student type: first time, transfer, returning and continuing. Classified graduate enrollment is sub-divided by degree type. The methods used to forecast each group vary and include participation ratios, linear and logarithmic trends, continuation rates, and constants.

First time freshmen enrollment is sub-divided by the geographic location of high school of origin: direct entrants from Hawai'i public high schools, direct entrants from Hawai'i private high schools, freshmen from the U.S. mainland, freshmen from foreign countries (including U.S. related areas) and other first-time freshmen. Direct entrants are students who enter college in the fall term immediately following graduation from high school.

The enrollment projections of **direct public entrants** are based upon the forecast of public high school seniors provided by the Hawai'i Department of Education (see Appendix A). This forecast was most recently updated in November 2016. Historical ratios of direct public entrants to public high school senior enrollment are calculated by school district. Enrollment for each year is projected by applying an average of this ratio (by district) to the annual DOE senior enrollment forecast.

The projection of **direct private entrants** relies upon the private high school graduate forecast for Hawai'i published by the Western Interstate Commission for Higher Education (WICHE), most recently updated in December 2016 (see Appendix B). Historical ratios of direct private entrants to total Hawai'i private high school graduates are first calculated. An average ratio is then applied to the WICHE annual private high school graduate forecast to yield the projected number of first-time freshmen from Hawai'i private high schools.

First-time freshmen from the **U.S. mainland** have increased since fall 2006, while first-time freshmen from **foreign countries and U.S. related areas** have declined somewhat. Mainland freshmen have been forecast using the log trend measured from fall 2006 to fall 2016, while freshmen from foreign countries have been set to a constant. **Other first-time freshmen** include those who completed high school via the General Education Development (GED) examination, home-schooled students and those who graduated from Hawai'i high schools prior to the 2015-16 academic year. The total number is both small in absolute terms and relatively stable and has been set to a constant.

Classified undergraduate transfer enrollment has been in rather steep decline recently, having declined by 459 students (23.5%) since fall 2012. Declines have been measured across all previous institution types, with transfer from mainland institutions (-215) and other UH campuses (-101) accounting for most of the decline. Further decline is likely. Transfer from other UH campuses have been forecast using the log trend measured from fall 2013 to fall 2016, while all other previous college types have been set to constants. Distribution across education levels use the current year (fall 2016) ratios.

Classified undergraduate returning enrollment shows a long-term downward trend and has been forecast using a log trend measured from fall 1988 to fall 2016. Distribution by education level is made using the current year (fall 2016) ratios.

Classified undergraduate continuing enrollment is forecast using continuation rates. In general, a continuation rate is the ratio of continuing enrollment at a given education level to the previous fall semester's total enrollment at the next lower level. In this report, freshmen are projected using the previous year's first time freshmen, sophomores using the previous year's total freshmen, juniors using the previous year's sophomores, and seniors using the previous year's total upper division (juniors plus seniors). Formulas were

developed that determine the continuation rates yielding the best fit to the historical data. These rates were applied to the actual or projected total enrollment by education level to forecast continuing enrollment at the next higher level.

Classified graduate enrollment is sub-divided by degree type, with each type forecast separately: master's, research doctorate, professional practice doctorate and certificate (post-baccalaureate and graduate). Master's degree enrollment has been in rather steep decline since 2009, with no indication that the decline is easing. Research doctorate enrollment has been in decline since 2012, but is showing signs of leveling off. Both series may be subdivided into two groups: academic and occupational. The academic masters include the MA, MFA, MMUS and MS degrees; all other master's degree programs are considered occupational. For the research doctorate, all PhDs are considered academic, with only the DRPH considered occupational. Academic master's degree enrollment has declined more severely than has occupational master's degree enrollment. Subdividing the degrees in this way allows the overall trends for masters and research doctorates to decline less steeply. All master's degree and the PhD program enrollment have been forecast using log trends, while DrPH enrollment has been set constant at the fall 2016 number.

The Doctor of Architecture (DArch) program has been in mild decline in recent years and has been forecast using a log trend. Enrollment counts for all other professional practice doctorates, including medicine (MD), law (JD), nursing (DNP) and education (EdD) have been set constant at the fall 2016 level. The PCert in Education has been forecast using a linear trend, while Graduate Certificates have been set constant at the fall 2016 level.

Unclassified enrollment is broken out by academic level (undergraduate / graduate), and includes students whose home-campus is another UH campus. Enrollment of unclassified undergraduates has shown a mild upward trend since fall 2010, while unclassified graduate enrollment has been in decline since the mid-1990s. Unclassified graduate enrollment has been forecast using a log trend, while both unclassified undergraduate and students home-based at other UH campuses have been forecast using linear trends.

Table 1 presents six years of historical data with detailed forecasts by academic level, student type and education level for undergraduate students and degree type for graduate students. Table 2 presents headcount enrollment by college / division. Distribution across college / division is made using ratios derived from the fall 2016 enrollment levels. Student semester hours offered are given in Table 3 and full-time equivalent (FTE) course enrollments served are shown in Table 4. Headcount enrollment by attendance status is provided in Table 5. Enrollment between full-time and part-time is based upon the fall 2016 proportions. Appendix A shows historical and DOE projected enrollments of Hawai'i public high school seniors by geographic district. Appendix B gives the WICHE forecasts of Hawai'i public and private high school graduates through academic year 2031-32.

ANALYSIS AND DISCUSSION

- Headcount enrollment at the University of Hawai'i at Mānoa declined 4.3% in fall 2016 to measure 18,056, the fourth consecutive decline in fall semester enrollment (Table 1 and Figures 1 & 2). Enrollment has declined by 2,373 students (-11.6%) since the recent peak measured in fall 2011.
- **Headcount enrollment is forecast to decline an additional 2.2% in fall 2017 to measure 17,659. Further mild decline is forecast, but enrollment should remain above 17,000.**
- First-time freshmen enrollment increased slightly in fall 2016 (Figure 5). The increase was due to gains in first-time students from the Hawai'i high schools. Only enrollment of freshmen from the U.S. mainland declined. The DOE forecast of Hawai'i public high school seniors shows decline in fall 2017, growth in 2018 and reasonably stable thereafter (Appendix A), while the WICHE forecast for private high school graduates indicates mild growth (Appendix B). The overall forecast in first-time freshmen is for mild decline in fall 2017 with subsequent modest increase through fall 2022.
- Undergraduate transfer enrollment has declined the last four fall semesters (Figure 6). Declines have been measured in all categories, including especially transfers from other UH campuses and U.S. mainland institutions. With enrollment at the UH Community College in decline, large increases in transfer students from other UH campuses are unlikely. Further growth may depend upon admissions policy regarding non-residents.
- Undergraduate returning enrollment has shown a long-term downward trend since the late 1980s (Figure 7). However, the number has fallen below 200 only once on record (going back to the late 1970s). The forecast allows for a very mild decline.
- Undergraduate continuing enrollment comprises about half of all enrollment at UH Mānoa (Figure 8). After peaking in fall 2012 at just under 10,000 students, undergraduate continuing enrollment has declined the last four fall semesters. The forecast allows for a 2.6% decline in fall 2017 and mild decline thereafter.
- Classified graduate enrollment has declined for six fall semesters from the peak measured in fall 2010 (Figure 9), an overall decline of 19%. Enrollment in master degree programs has declined steadily since fall 2009, while enrollment in research doctorate programs has declined since 2012 (Figure 10). The professional practice Doctor of Architecture (DArch) program has been in decline since fall 2010. Other professional practice doctorate programs are stable at relatively low levels. Further overall declines in classified graduate enrollment are forecast.

SUMMARY AND CONCLUSION

Enrollment has been in decline for more than four years at UH Mānoa. The decline has not been concentrated in any one area, but has affected all classes of enrollment. Some recent increase in the first-time freshmen population may be cause for optimism. However, steep decline in classified undergraduate transfer enrollment should be of concern, as should the declines in master's and research doctorate degree programs. Whether or not the decline in classified graduates is structural, or merely tied to the economy, is a question that should be examined. Some decline in continuing students could be tied to recent initiatives to increase student credit hour load. However, after increasing for four years, the percentage of students enrolled full-time leveled off in fall 2016 at 75% (Figure 12). Despite these trends, total enrollment in fall 2016 still exceeded the most recent low point of 17,013, set in fall 1998.

Historically, headcount enrollment at UH Mānoa reached its zenith in fall 1972, at 22,371 (Figure 3). Since that time there has been an overall long-term slow decline. Enrollment grew in the early 2000s to reach 20,549 in fall 2004. Interestingly, enrollment exceeded 20,000 for the next eight years before beginning the most recent period of decline. Again, whether these trends are tied to the economy, or represent more structural dynamics in terms of demographics, competition or other factors, is an area worth exploring. The current enrollment environment presents both challenges and opportunities.

University of Hawai'i at Mānoa Projected Trends in Enrollment

Figure 1
Recent and Projected Headcount Enrollment

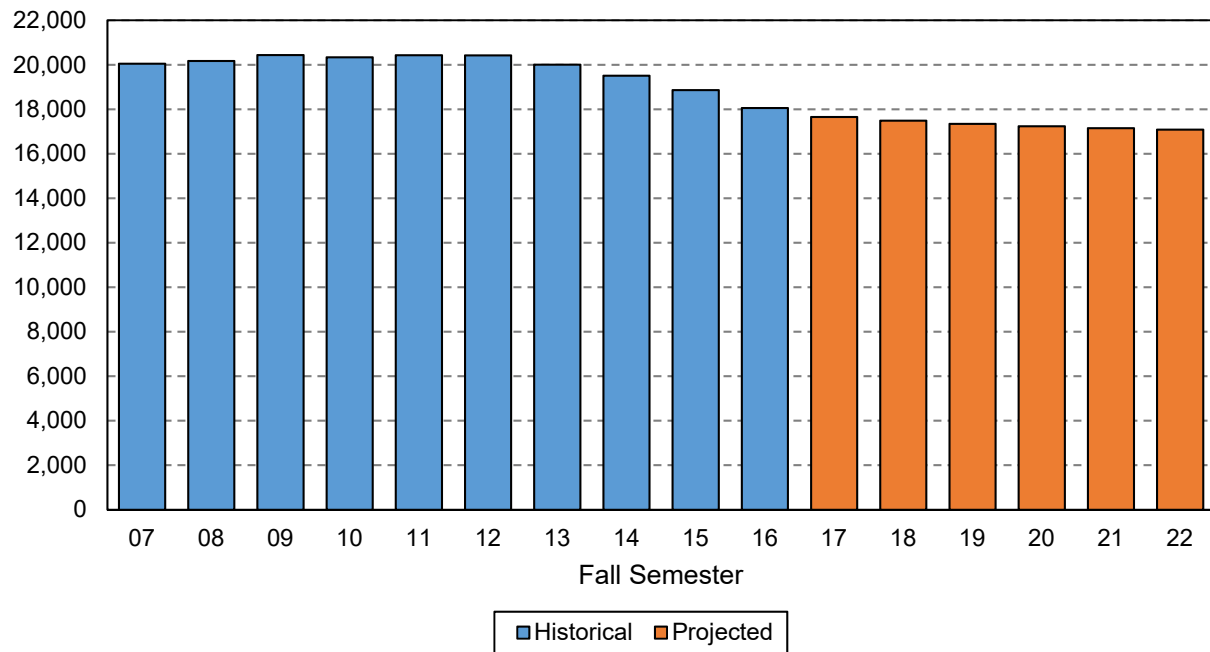
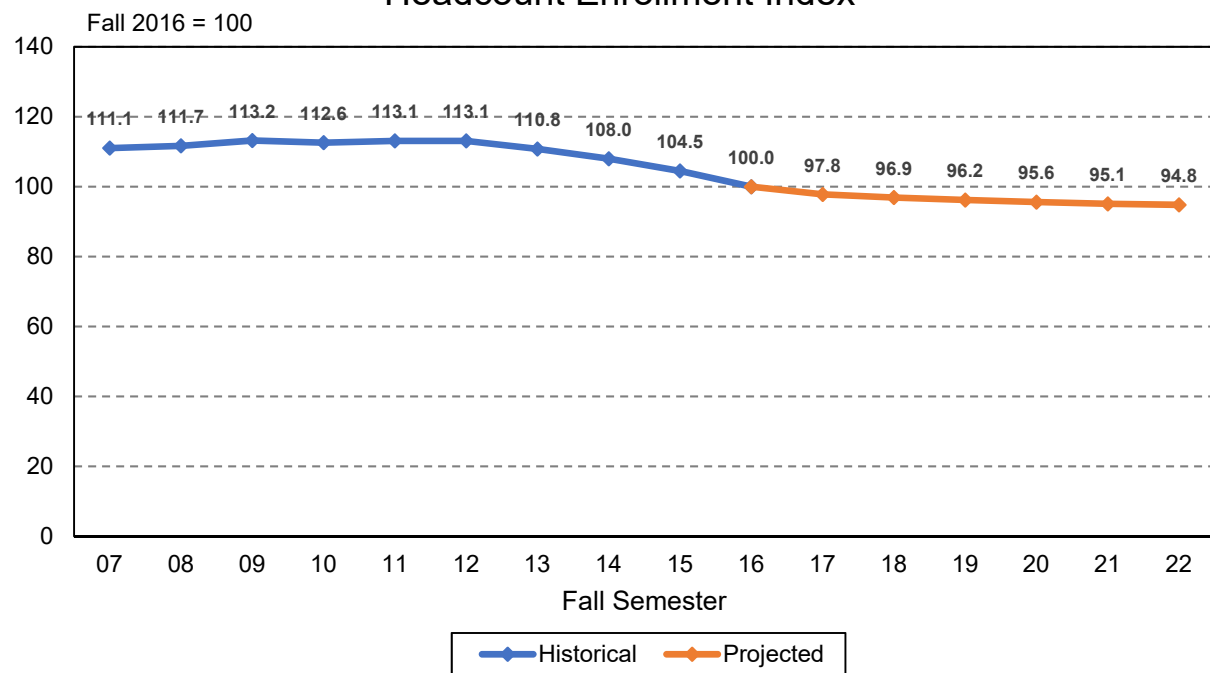


Figure 2
Headcount Enrollment Index



University of Hawai'i at Mānoa Projected Trends in Enrollment

Figure 3
Historical Headcount Enrollment

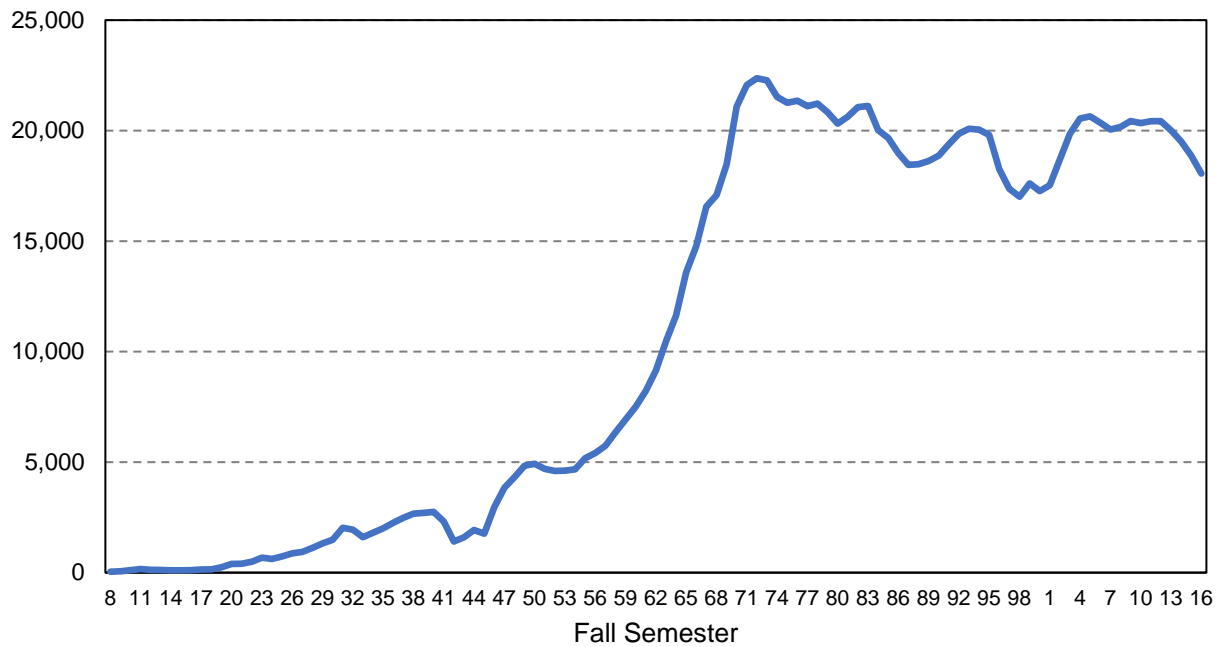
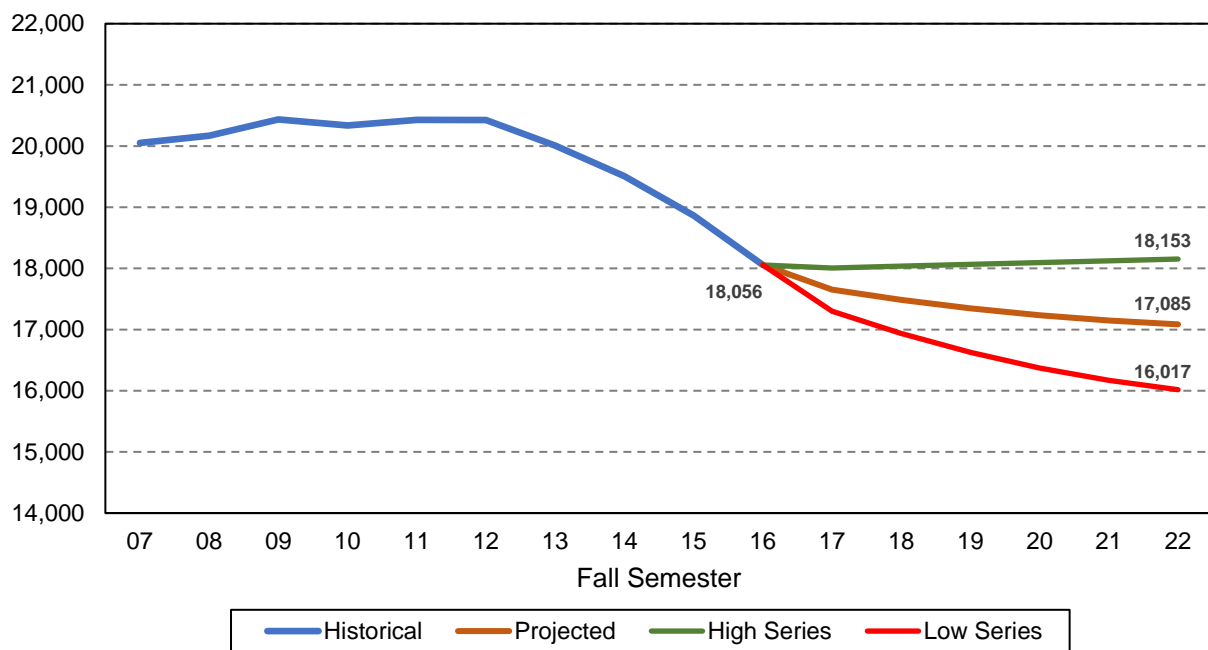


Figure 4
Projected Enrollment with High and Low Series



University of Hawai'i at Mānoa Projected Trends in Enrollment

Figure 5
First-Time Freshmen by High School of Origin

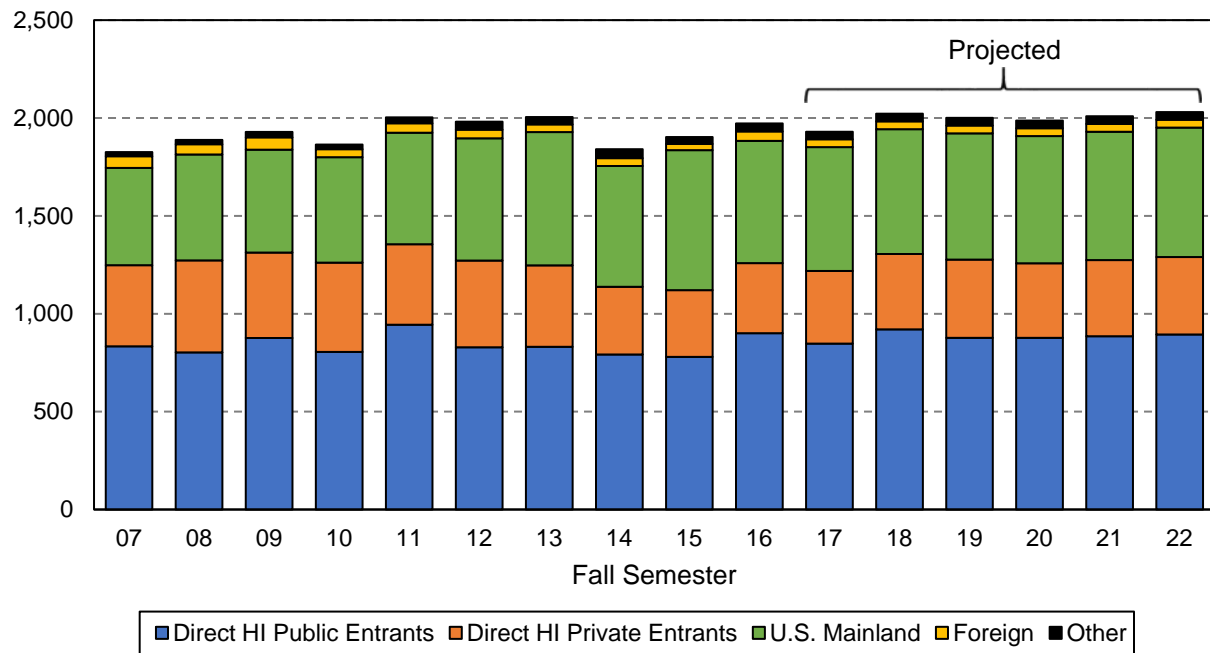
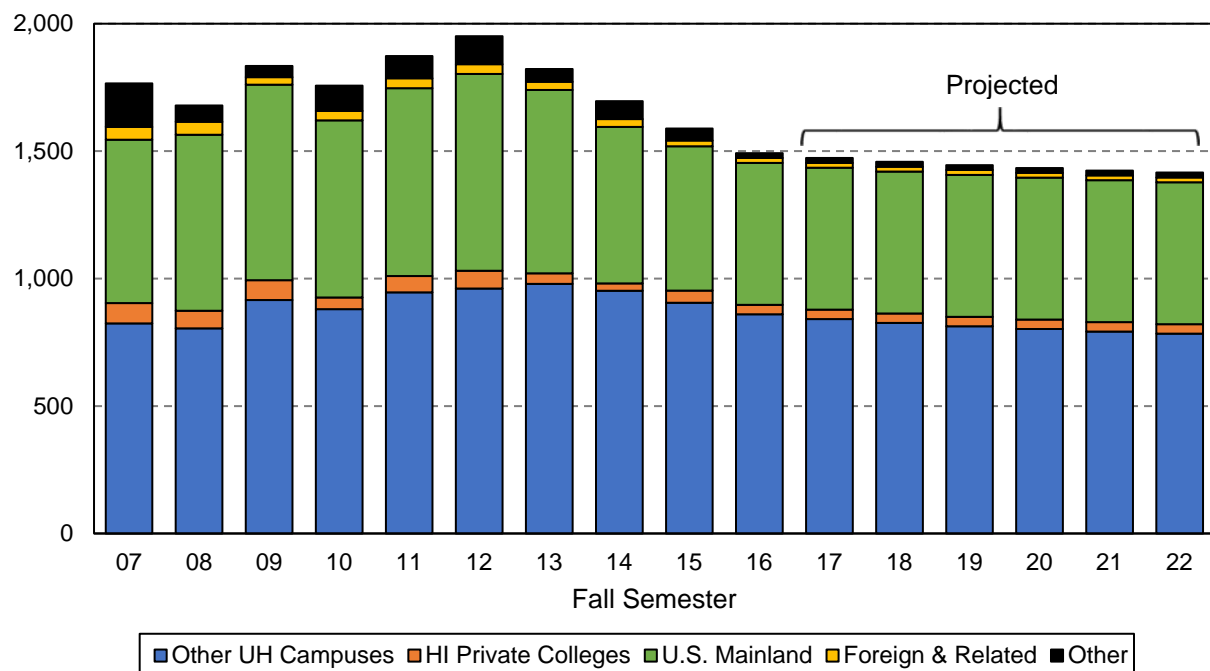


Figure 6
Classified Undergraduate Transfers by Previous College



University of Hawai'i at Mānoa Projected Trends in Enrollment

Figure 7
Classified Undergraduate Returning Enrollment

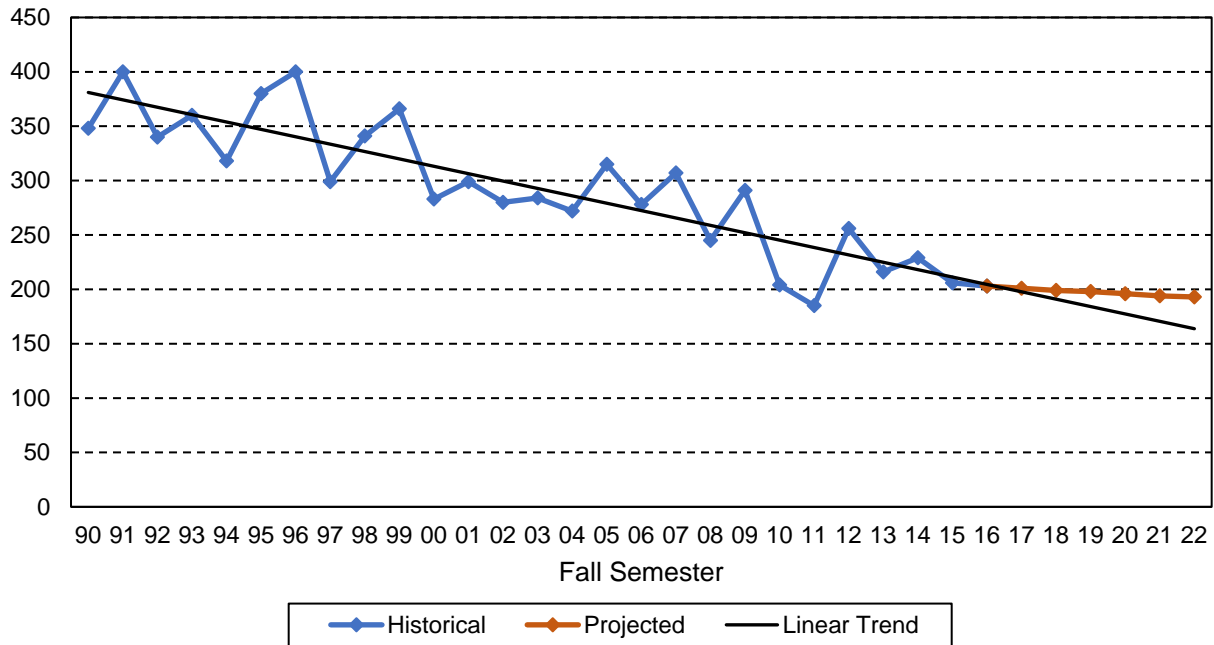
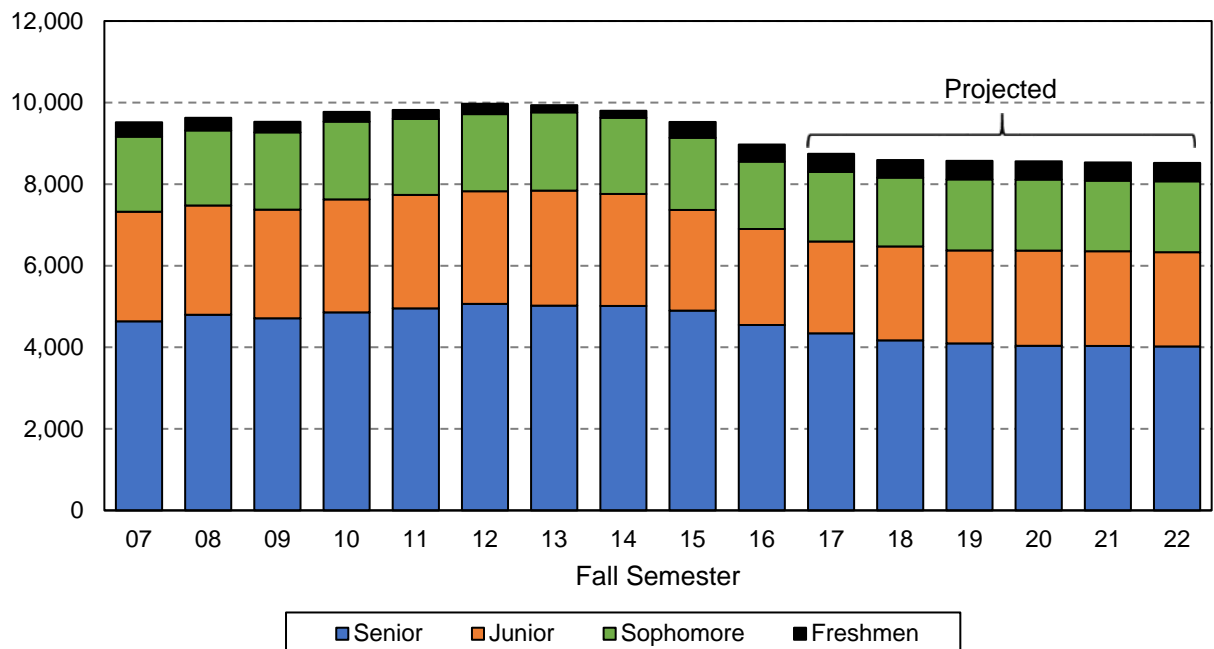


Figure 8
Classified Undergraduate Continuing by Education Level



University of Hawai'i at Mānoa Projected Trends in Enrollment

Figure 9
Classified Graduate Enrollment by Degree Type

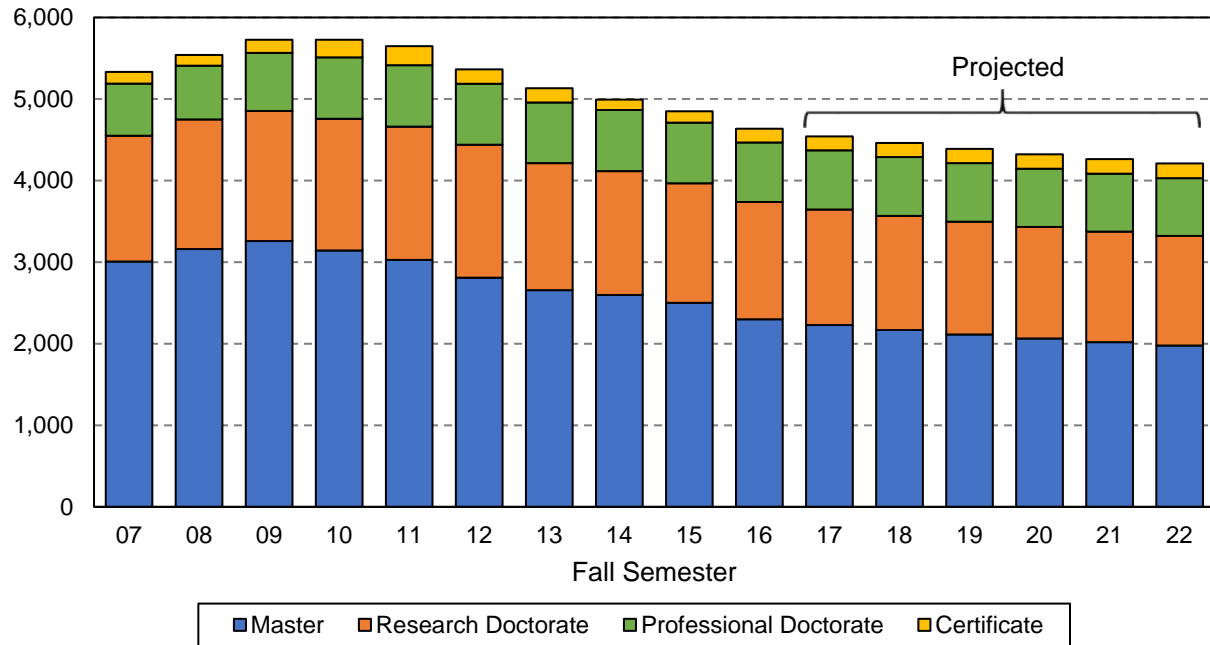
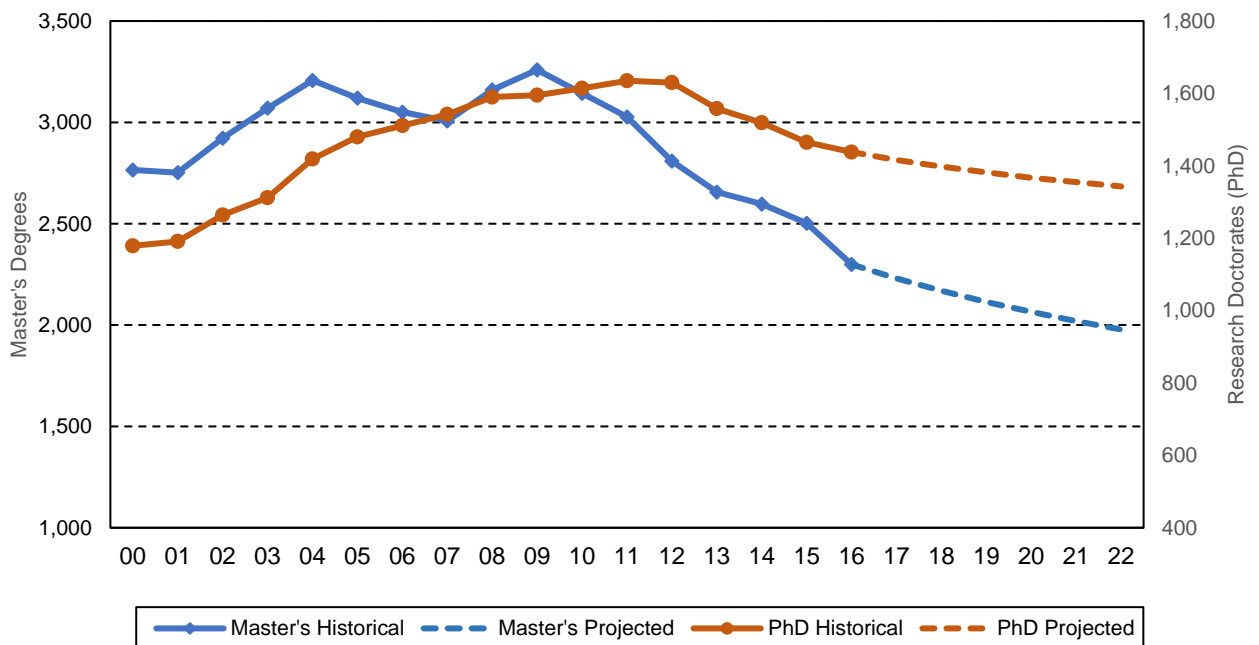


Figure 10
Master's Degree and Research Doctorate Enrollment



University of Hawai'i at Mānoa Projected Trends in Enrollment

Figure 11
Unclassified Enrollment

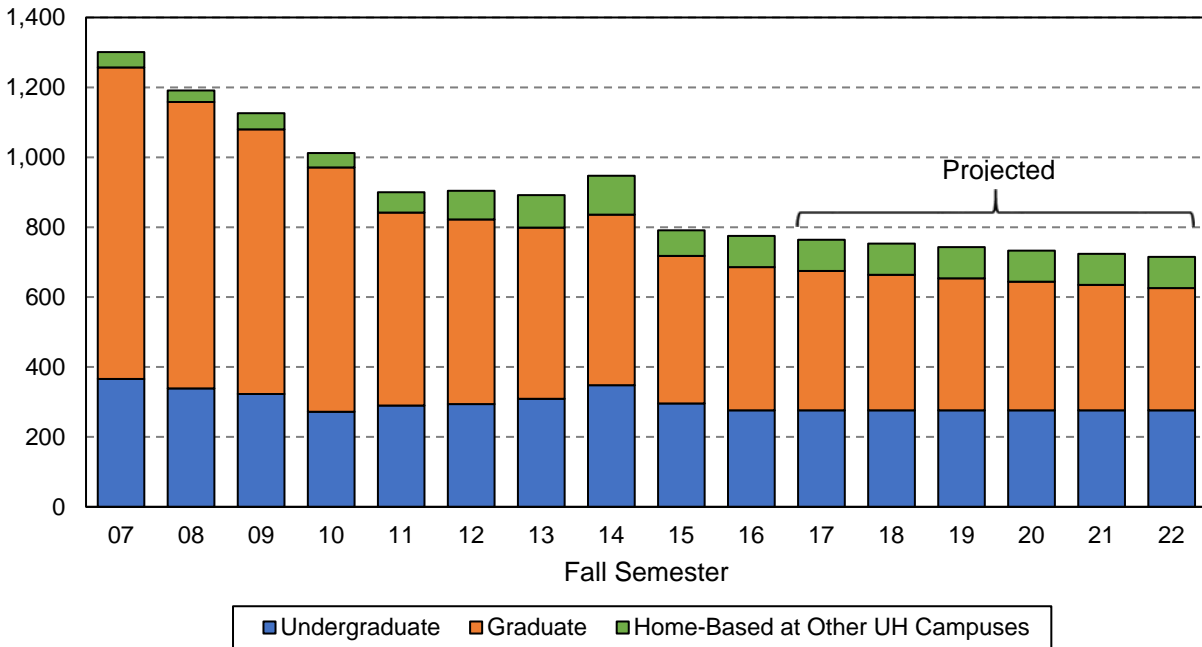


Figure 12
Full-Time as a Percentage of Total Enrollment

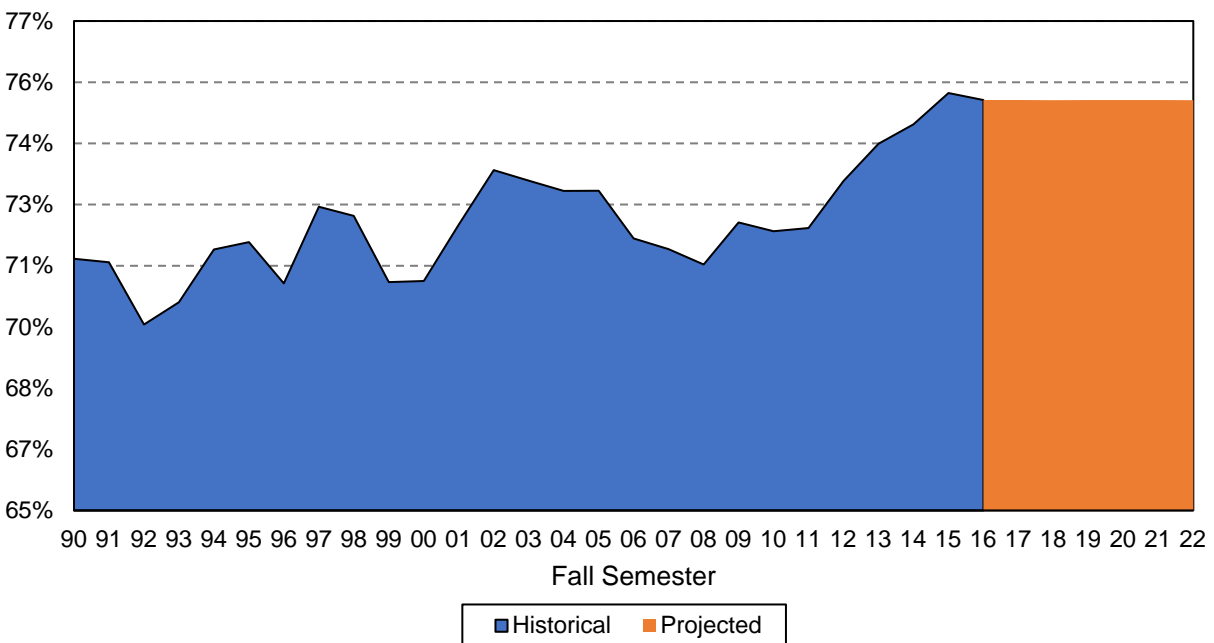


TABLE 1
HEADCOUNT ENROLLMENT BY ACADEMIC LEVEL AND STUDENT TYPE
UNIVERSITY OF HAWAI'I AT MĀNOA
FALL 2011 TO FALL 2022

EDUCATION LEVEL AND REGISTRATION STATUS	HISTORICAL						PROJECTED					
	2011	2012	2013	2014	2015	2016	2017	2018	2019	2020	2021	2022
Total Headcount	20,429	20,426	20,006	19,507	18,865	18,056	17,659	17,498	17,365	17,258	17,177	17,121
Classified	19,529	19,522	19,114	18,560	18,074	17,281	16,889	16,733	16,604	16,501	16,423	16,370
Classified Undergraduates	13,880	14,159	13,981	13,567	13,224	12,645	12,347	12,272	12,215	12,178	12,159	12,160
Freshmen	2,346	2,393	2,313	2,104	2,457	2,539	2,510	2,592	2,591	2,571	2,588	2,613
Sophomores	2,480	2,456	2,466	2,342	2,293	2,135	2,184	2,160	2,211	2,206	2,190	2,198
Juniors	3,699	3,731	3,724	3,647	3,188	3,039	2,931	2,975	2,944	2,993	2,982	2,962
Seniors	5,355	5,579	5,478	5,474	5,286	4,932	4,722	4,545	4,469	4,408	4,399	4,387
Entering Classified Undergraduates	4,061	4,188	4,043	3,766	3,698	3,667	3,604	3,679	3,644	3,617	3,627	3,639
First-Time Freshmen	2,003	1,981	2,005	1,841	1,903	1,972	1,930	2,022	2,001	1,987	2,009	2,030
Direct from HI Public High Schools ..	944	829	831	792	780	901	848	920	877	877	885	894
Direct from HI Private High Schools ..	411	443	416	346	341	358	371	385	400	381	389	396
U.S. Mainland	570	624	681	617	715	624	632	638	645	650	656	661
Foreign & U.S. Related Areas 1/	48	44	39	40	32	48	40	40	40	40	40	40
Other First-Time Freshmen 2/	30	41	38	46	35	41	39	39	39	39	39	39
Transfer by Education Level	1,873	1,951	1,822	1,696	1,589	1,492	1,473	1,458	1,445	1,434	1,424	1,416
Freshmen	115	145	112	74	147	129	127	126	125	124	123	122
Sophomores	599	541	524	454	504	463	457	452	448	445	442	439
Juniors	881	919	869	859	686	655	647	641	635	630	625	622
Seniors	278	346	317	309	252	245	242	239	237	235	234	233
Transfer by Previous College	1,873	1,951	1,822	1,696	1,589	1,492	1,473	1,458	1,445	1,434	1,424	1,416
Other UH Institutions	946	961	979	952	905	860	841	826	813	802	792	784
HI Private Institutions	64	70	42	29	48	37	37	37	37	37	37	37
U.S. Mainland Institutions	737	772	719	614	566	557	557	557	557	557	557	557
Foreign & U.S. Related Areas	39	38	32	31	23	19	19	19	19	19	19	19
Other Transfers 3/	87	110	50	70	47	19	19	19	19	19	19	19

TABLE 1
HEADCOUNT ENROLLMENT BY ACADEMIC LEVEL AND STUDENT TYPE
UNIVERSITY OF HAWAI'I AT MĀNOA
FALL 2011 TO FALL 2022

EDUCATION LEVEL AND REGISTRATION STATUS	HISTORICAL						PROJECTED					
	2011	2012	2013	2014	2015	2016	2017	2018	2019	2020	2021	2022
Returning	185	256	216	229	206	203	201	199	198	196	194	193
Freshmen	9	15	19	14	18	12	12	12	12	12	11	11
Sophomores	16	24	22	22	20	19	19	19	19	18	18	18
Juniors	38	49	37	41	32	32	32	31	31	31	31	30
Seniors	122	168	138	152	136	140	138	137	136	135	134	134
Continuing	9,819	9,971	9,938	9,801	9,526	8,978	8,743	8,593	8,571	8,561	8,532	8,521
Freshmen	219	252	177	175	389	426	441	432	453	448	445	450
Sophomores	1,865	1,891	1,920	1,866	1,769	1,653	1,708	1,689	1,744	1,743	1,730	1,741
Juniors	2,780	2,763	2,818	2,747	2,470	2,352	2,252	2,303	2,278	2,332	2,326	2,310
Seniors	4,955	5,065	5,023	5,013	4,898	4,547	4,342	4,169	4,096	4,038	4,031	4,020
Classified Graduates	5,649	5,363	5,133	4,993	4,850	4,636	4,542	4,461	4,389	4,323	4,264	4,210
Masters	3,027	2,809	2,656	2,597	2,502	2,299	2,230	2,169	2,114	2,065	2,019	1,978
Research Doctorate	1,605	1,630	1,558	1,519	1,465	1,438	1,416	1,398	1,382	1,367	1,355	1,343
Professional Practice Doctorate 4/	782	748	743	749	744	731	726	722	718	714	711	708
Post-Baccalaureate 5/	174	120	117	100	96	122	124	126	129	131	133	135
Graduate Certificate	61	56	59	28	43	46	46	46	46	46	46	46
Unclassified	900	904	892	947	791	775	770	765	761	757	754	751
Undergraduates	290	294	309	349	296	276	279	282	285	287	290	293
Graduates	552	528	490	488	422	410	399	388	378	368	359	350
Home-Based at Other UH Campus 6/ ..	58	82	93	110	73	89	92	95	98	102	105	108

1/ Includes U.S. Possessions, Commonwealths and republics within the Compact of Free Association.

2/ Includes GED, students from Hawai'i who are not recent high school graduates and records with invalid data on high school.

3/ Includes records with invalid data on previous college.

4/ Includes new Doctor of Nursing Practice beginning Fall 2012.

5/ Post-baccalaureate in education was changed from graduate to undergraduate level in Fall 2011. However, in this table counts are included with graduate level for continuity.

6/ Students whose primary (home) campus, as identified in Banner / ODS, is a UH campus other than UH Mānoa.

Source: UH Institutional Research and Analysis Office; January 2017.

TABLE 2
HEADCOUNT ENROLLMENT BY COLLEGE AND ACADEMIC LEVEL
UNIVERSITY OF HAWAI'I AT MĀNOA
FALL 2011 TO FALL 2022

COLLEGE	HISTORICAL						PROJECTED					
	2011	2012	2013	2014	2015	2016	2017	2018	2019	2020	2021	2022
Campus Total	20,429	20,426	20,006	19,507	18,865	18,056	17,653	17,486	17,347	17,234	17,147	17,085
Undergraduate Level	14,228	14,535	14,383	14,026	13,593	13,010	12,712	12,637	12,580	12,543	12,524	12,525
Lower Division 1/	5,174	5,225	5,181	4,905	5,119	5,039	5,059	5,117	5,167	5,142	5,143	5,176
Upper Division	9,054	9,310	9,202	9,121	8,474	7,971	7,653	7,520	7,413	7,401	7,381	7,349
Graduate Level 2/	6,201	5,891	5,623	5,481	5,272	5,046	4,941	4,849	4,767	4,691	4,623	4,560
Classified	19,529	19,522	19,114	18,560	18,074	17,281	16,889	16,733	16,604	16,501	16,423	16,370
Undergraduates	13,880	14,159	13,981	13,567	13,224	12,645	12,347	12,272	12,215	12,178	12,159	12,160
Lower Division	4,826	4,849	4,779	4,446	4,750	4,674	4,694	4,752	4,802	4,777	4,778	4,811
Upper Division	9,054	9,310	9,202	9,121	8,474	7,971	7,653	7,520	7,413	7,401	7,381	7,349
Graduates	5,649	5,363	5,133	4,993	4,850	4,636	4,542	4,461	4,389	4,323	4,264	4,210
Unclassified	900	904	892	947	791	775	764	753	743	733	724	715
Undergraduate (Lower Division)	290	294	309	348	296	276	276	276	276	276	276	276
Graduate Level	552	528	490	488	422	410	399	388	378	368	359	350
Home-Based at Other UH 3/	58	82	93	111	73	89	89	89	89	89	89	89
COLLEGE OF ARTS & SCIENCES	11,539	10,934	10,359	9,755	8,003	6,543	6,375	6,314	6,257	6,220	6,186	6,166
Lower Division	4,121	3,827	3,601	3,296	2,485	1,690	1,696	1,719	1,736	1,728	1,727	1,742
Upper Division	5,518	5,323	5,068	4,805	3,937	3,354	3,217	3,163	3,117	3,114	3,105	3,090
Graduate Level	1,900	1,784	1,690	1,654	1,581	1,499	1,462	1,432	1,404	1,378	1,354	1,334
Arts & Humanities	1,578	1,536	1,376	1,199	1,067	967	941	928	919	911	906	901
Lower Division	292	267	193	180	182	185	186	188	191	189	190	190
Upper Division	905	941	882	721	592	505	485	475	469	467	466	464
Graduate Level	381	328	301	298	293	277	270	265	259	255	250	247
Languages, Ling & Lit	1,053	1,080	1,035	1,011	969	903	879	866	856	850	842	837
Lower Division	162	166	166	142	167	145	146	147	149	149	148	150
Upper Division	510	545	512	512	454	426	409	402	396	396	394	392
Graduate Level	381	369	357	357	348	332	324	317	311	305	300	295

TABLE 2
HEADCOUNT ENROLLMENT BY COLLEGE AND ACADEMIC LEVEL
UNIVERSITY OF HAWAI'I AT MĀNOA
FALL 2011 TO FALL 2022

COLLEGE	HISTORICAL						PROJECTED					
	2011	2012	2013	2014	2015	2016	2017	2018	2019	2020	2021	2022
Natural Sciences	2,398	2,521	2,555	2,526	2,619	2,500	2,439	2,428	2,409	2,400	2,389	2,387
Lower Division	803	873	869	822	913	882	888	903	909	906	905	914
Upper Division	1,121	1,186	1,240	1,264	1,260	1,205	1,148	1,131	1,113	1,114	1,111	1,105
Graduate Level	474	462	446	440	446	413	403	394	387	380	373	368
Social Sciences	2,012	1,991	1,866	1,864	1,820	1,721	1,672	1,647	1,630	1,618	1,609	1,600
Lower Division	209	218	204	184	242	251	254	255	259	257	257	259
Upper Division	1,167	1,180	1,105	1,148	1,115	1,025	984	967	954	952	950	945
Graduate Level	636	593	557	532	463	445	434	425	417	409	402	396
General Arts & Sciences	4,379	3,679	3,416	3,057	1,416	356	351	354	354	354	353	355
Lower Division	2,655	2,303	2,167	1,967	981	226	221	225	227	226	226	228
Upper Division	1,724	1,376	1,249	1,090	435	130	130	129	127	128	127	127
Other Arts & Sciences	119	127	111	98	112	96	93	91	89	87	87	86
Lower Division			2	1		1	1	1	1	1	1	1
Upper Division	91	95	80	70	81	63	61	59	58	57	57	57
Graduate Level	28	32	29	27	31	32	31	31	30	29	29	28
OFFICE OF UNDERGRADUATE ED 4/					889	1,878	1,861	1,879	1,885	1,883	1,882	1,888
Lower Division					586	1,292	1,297	1,314	1,327	1,320	1,321	1,330
Upper Division					303	586	564	565	558	563	561	558
SCH OF HAWAIIAN KNOWLEDGE	246	250	228	202	198	177	172	168	166	164	163	163
Lower Division	41	41	24	31	21	21	21	21	21	21	21	21
Upper Division	152	151	148	124	131	108	104	101	100	99	99	99
Graduate Level	53	58	56	47	46	48	47	46	45	44	43	43
SCH OF PACIFIC & ASIAN ST	157	141	143	135	110	86	84	82	81	81	80	78
Lower Division	23	29	15	18	15	12	12	12	12	12	12	12
Upper Division	65	51	66	60	46	33	32	31	31	31	31	30
Graduate Level	69	61	62	57	49	41	40	39	38	38	37	36

TABLE 2
HEADCOUNT ENROLLMENT BY COLLEGE AND ACADEMIC LEVEL
UNIVERSITY OF HAWAI'I AT MĀNOA
FALL 2011 TO FALL 2022

COLLEGE	HISTORICAL						PROJECTED					
	2011	2012	2013	2014	2015	2016	2017	2018	2019	2020	2021	2022
SCH OF OCEAN & EARTH SCI TECH..	309	299	278	305	285	257	251	246	242	239	237	236
Lower Division	29	37	31	40	40	30	30	30	30	30	30	31
Upper Division	96	91	81	102	92	88	85	83	82	81	81	81
Graduate Level	184	171	166	163	153	139	136	133	130	128	126	124
SCHOOL OF ARCHITECTURE	386	321	309	271	280	263	255	248	244	239	236	233
Lower Division	95	70	69	49	67	83	84	84	85	85	85	85
Upper Division	154	135	114	116	123	111	107	104	103	102	102	102
Graduate Level (DArch)	137	116	126	106	90	69	64	60	56	52	49	46
COLLEGE OF BUSINESS ADMIN	1,271	1,400	1,411	1,494	1,494	1,395	1,352	1,328	1,310	1,300	1,294	1,284
Lower Division	1	33	63	99	138	153	154	156	158	156	157	157
Upper Division	886	930	939	982	952	867	832	814	802	800	798	794
Graduate Level	384	437	409	413	404	375	366	358	350	344	339	333
SCH OF TRAVEL INDUSTRY MGT	303	347	372	364	355	376	367	362	359	359	357	356
Lower Division	64	86	82	85	91	97	98	99	100	100	99	100
Upper Division	223	251	280	266	250	265	255	250	246	246	245	244
Graduate Level	16	10	10	13	14	14	14	13	13	13	13	12
COLLEGE OF EDUCATION	1,550	1,861	1,947	1,927	1,910	1,867	1,827	1,805	1,793	1,778	1,766	1,757
Lower Division	6	232	350	310	353	326	328	331	336	334	334	335
Upper Division	426	639	730	790	675	642	616	606	597	596	594	592
Graduate Level 5/	1,088	962	840	797	854	873	857	842	834	822	812	804
Professional Practice (EdD) 6/	30	28	27	30	28	26	26	26	26	26	26	26
COLLEGE OF ENGINEERING	1,011	1,087	1,147	1,174	1,474	1,492	1,457	1,446	1,436	1,428	1,425	1,423
Lower Division	276	307	317	304	514	507	509	516	521	518	519	522
Upper Division	542	603	641	700	822	850	816	801	789	786	784	781
Graduate Level	193	177	189	170	138	135	132	129	126	124	122	120
COLLEGE OF TROP AG & HUM RES ...	900	980	988	979	947	918	895	882	875	868	864	861
Lower Division	152	168	194	169	201	210	212	213	216	215	215	216
Upper Division	501	581	552	584	546	504	484	474	468	465	465	463
Graduate Level	247	231	242	226	200	204	199	195	191	188	184	182

TABLE 2
HEADCOUNT ENROLLMENT BY COLLEGE AND ACADEMIC LEVEL
UNIVERSITY OF HAWAI‘I AT MĀNOA
FALL 2011 TO FALL 2022

COLLEGE	HISTORICAL						PROJECTED					
	2011	2012	2013	2014	2015	2016	2017	2018	2019	2020	2021	2022
SCHOOL OF MEDICINE	473	469	480	514	610	630	620	613	608	602	599	596
Lower Division	1			5	21	25	25	25	26	25	25	25
Upper Division	10	10	14	39	107	131	126	123	121	120	120	120
Graduate Level	207	210	203	202	219	208	203	199	195	191	188	185
Professional Practice (MD)	255	249	263	268	263	266	266	266	266	266	266	266
SCHOOL OF NURSING	693	768	794	763	860	779	762	756	749	744	741	740
Lower Division	13	18	31	37	211	223	223	227	229	228	228	230
Upper Division	408	466	484	456	385	340	327	319	314	313	311	311
Graduate Level	272	273	257	246	205	151	147	145	141	138	137	134
Professional Practice (DNP) 7/		11	22	24	59	65	65	65	65	65	65	65
SCHOOL OF SOCIAL WORK	319	308	334	349	344	310	301	294	289	286	283	279
Lower Division	4	1	2	3	7	5	5	5	5	5	5	5
Upper Division	73	79	85	97	105	92	88	86	85	85	85	84
Graduate Level	242	228	247	249	232	213	208	203	199	196	193	190
SCHOOL OF LAW	372	357	324	328	315	311	311	311	311	311	311	311
1st Professional	360	344	305	321	304	305	305	305	305	305	305	305
Master in Law	12	13	19	7	11	5	5	5	5	5	5	5
Pre-Law, Non-Degree (Unclass)						1	1	1	1	1	1	1

1/ Includes Unclassified Undergraduates and records with invalid data on education level.

2/ Includes Unclassified Graduates.

3/ Students whose primary (home) campus, as identified in Banner / ODS, is a UH campus other than UH Mānoa.

4/ Office of Undergraduate Education houses all pre-majors, except for pre-nursing, which is included under the School of Nursing; change effective Fall 2015.

5/ Post Baccalaureate changed to undergraduate education level for financial aid purposes in Fall 2011; however, included here with graduate level for consistency in reporting.

6/ Educational Practice program approved by the UH Board of Regents in January 2011, effective Spring 2011.

7/ Nursing Practice program approved in May 2011, effective Fall 2012; enrollments forecast per program proposal.

TABLE 3
STUDENT SEMESTER HOURS OFFERED BY COLLEGE
UNIVERSITY OF HAWAI'I AT MĀNOA
FALL 2011 TO FALL 2022

COLLEGE / FALL SEMESTER	HISTORICAL						PROJECTED					
	2011	2012	2013	2014	2015	2016	2017	2018	2019	2020	2021	2022
TOTAL	234,920	239,675	237,338	232,585	227,710	217,283	212,676	211,063	209,767	208,695	207,944	207,545
Lower Division	102,984	106,128	104,891	99,017	95,810	92,932	91,982	92,230	92,393	92,041	91,947	92,221
Upper Division	86,410	89,878	90,938	92,348	91,038	85,295	82,306	81,026	80,085	79,841	79,599	79,314
Graduate Level	45,526	43,669	41,509	41,220	40,862	39,056	38,388	37,807	37,289	36,813	36,398	36,010
COLLEGE OF ARTS & SCIENCES 1/ ...	136,214	136,808	133,962	129,477	124,647	119,049	116,784	116,333	115,892	115,396	115,073	115,047
Lower Division	79,572	80,974	79,189	74,800	71,574	68,875	68,219	68,464	68,592	68,335	68,267	68,489
Upper Division	45,951	45,491	45,237	45,095	44,111	41,660	40,245	39,725	39,313	39,222	39,104	38,971
Graduate Level	10,691	10,343	9,536	9,582	8,962	8,514	8,320	8,144	7,987	7,839	7,702	7,587
Arts & Humanities	29,579	27,580	26,383	25,785	24,299	22,376	21,938	21,835	21,754	21,646	21,598	21,584
Lower Division	15,587	14,495	14,308	13,240	12,348	11,723	11,613	11,654	11,693	11,637	11,635	11,665
Upper Division	12,119	11,351	10,537	11,123	10,454	9,326	9,031	8,911	8,821	8,788	8,765	8,736
Graduate Level	1,873	1,734	1,538	1,422	1,497	1,327	1,294	1,270	1,240	1,221	1,198	1,183
Languages, Ling & Lit	31,411	31,703	30,548	29,118	28,139	26,473	25,961	25,840	25,739	25,628	25,536	25,522
Lower Division	19,033	19,778	18,880	18,074	17,097	16,115	15,911	15,932	15,939	15,881	15,848	15,886
Upper Division	10,242	9,991	9,757	9,062	9,212	8,610	8,343	8,239	8,162	8,142	8,109	8,082
Graduate Level	2,136	1,934	1,911	1,982	1,830	1,748	1,707	1,669	1,638	1,605	1,579	1,554
Natural Sciences	35,818	38,054	39,462	38,980	38,316	36,525	35,872	35,831	35,730	35,589	35,499	35,536
Lower Division	27,745	29,159	29,586	28,545	28,173	26,994	26,694	26,802	26,838	26,746	26,720	26,818
Upper Division	5,324	6,141	7,219	7,679	7,396	6,947	6,657	6,563	6,471	6,467	6,444	6,415
Graduate Level	2,749	2,754	2,657	2,756	2,747	2,584	2,521	2,466	2,421	2,376	2,335	2,303
Social Sciences 1/	37,737	37,392	35,488	33,449	31,912	31,583	30,965	30,789	30,645	30,516	30,425	30,390
Lower Division	16,320	16,562	15,308	13,493	12,532	12,547	12,529	12,606	12,660	12,610	12,605	12,659
Upper Division	17,615	17,084	16,847	16,696	16,613	16,314	15,767	15,572	15,422	15,390	15,351	15,302
Graduate Level	3,802	3,746	3,333	3,260	2,767	2,722	2,669	2,611	2,563	2,516	2,469	2,429
Other Arts & Sciences	1,669	2,079	2,081	2,145	1,981	2,092	2,048	2,038	2,024	2,017	2,015	2,015
Lower Division 2/	887	980	1,107	1,448	1,424	1,496	1,472	1,470	1,462	1,461	1,459	1,461
Upper Division	651	924	877	535	436	463	447	440	437	435	435	436
Graduate Level	131	175	97	162	121	133	129	128	125	121	121	118

TABLE 3
STUDENT SEMESTER HOURS OFFERED BY COLLEGE
UNIVERSITY OF HAWAI'I AT MĀNOA
FALL 2011 TO FALL 2022

COLLEGE / FALL SEMESTER	HISTORICAL						PROJECTED					
	2011	2012	2013	2014	2015	2016	2017	2018	2019	2020	2021	2022
SCH OF HAWN KNOWLEDGE	7,190	8,129	8,122	7,724	7,569	7,128	7,031	7,010	7,011	6,967	6,953	6,967
Lower Division	5,541	6,165	6,361	5,822	5,860	5,625	5,574	5,584	5,604	5,576	5,574	5,590
Upper Division	1,263	1,748	1,475	1,659	1,475	1,240	1,199	1,173	1,159	1,149	1,144	1,142
Graduate Level	386	216	286	243	234	263	258	253	248	242	235	235
SCH OF PACIFIC & ASIAN ST	1,635	1,551	1,606	1,470	1,296	1,202	1,178	1,163	1,159	1,156	1,151	1,139
Lower Division	638	682	659	471	405	483	478	475	479	477	477	477
Upper Division	629	571	601	747	680	535	519	513	509	508	508	500
Graduate Level	368	298	346	252	211	184	181	175	171	171	166	162
SCH OF OCEAN & EARTH SCI TECH .	4,019	4,081	3,900	4,149	4,198	4,029	3,955	3,925	3,896	3,867	3,847	3,842
Lower Division	1,762	1,954	1,971	1,908	1,921	1,947	1,930	1,940	1,943	1,936	1,933	1,943
Upper Division	1,068	1,037	843	1,072	1,091	1,117	1,080	1,063	1,050	1,042	1,038	1,036
Graduate Level	1,189	1,090	1,086	1,169	1,186	965	945	922	903	889	876	863
SCHOOL OF ARCHITECTURE	3,210	2,809	2,917	2,633	2,679	2,604	2,509	2,431	2,380	2,319	2,281	2,245
Lower Division	941	695	751	647	748	844	842	837	842	839	839	841
Upper Division	822	854	655	729	829	851	821	798	792	784	784	784
Graduate Level (DArch)	1,447	1,260	1,511	1,257	1,102	909	846	796	746	696	658	620
COLLEGE OF BUSINESS ADMIN	15,791	16,400	16,773	16,953	16,469	15,352	14,837	14,589	14,403	14,322	14,263	14,169
Lower Division	2,847	3,024	3,222	2,904	2,808	2,811	2,768	2,771	2,771	2,767	2,766	2,763
Upper Division	9,865	10,135	10,822	10,894	10,401	9,477	9,100	8,915	8,791	8,765	8,745	8,701
Graduate Level	3,079	3,241	2,729	3,155	3,260	3,064	2,969	2,903	2,841	2,790	2,752	2,705
SCH OF TRAVEL INDUSTRY MGT	2,765	2,983	2,898	3,166	3,335	3,345	3,255	3,205	3,173	3,173	3,157	3,149
Lower Division	866	930	786	880	953	893	883	879	879	878	872	876
Upper Division	1,800	2,012	2,073	2,196	2,307	2,373	2,293	2,253	2,221	2,222	2,212	2,205
Graduate Level	99	41	39	90	75	79	79	73	73	73	73	68
COLLEGE OF EDUCATION	16,189	17,285	16,371	15,877	16,719	16,122	15,710	15,503	15,354	15,249	15,150	15,072
Lower Division	580	1,108	1,232	1,264	1,442	1,747	1,716	1,708	1,706	1,697	1,694	1,693
Upper Division	8,823	9,804	10,025	9,855	10,007	8,860	8,581	8,475	8,384	8,363	8,331	8,305
Graduate Level	6,786	6,373	5,114	4,758	5,270	5,515	5,413	5,320	5,264	5,189	5,125	5,074

TABLE 3
STUDENT SEMESTER HOURS OFFERED BY COLLEGE
UNIVERSITY OF HAWAI'I AT MĀNOA
FALL 2011 TO FALL 2022

COLLEGE / FALL SEMESTER	HISTORICAL						PROJECTED					
	2011	2012	2013	2014	2015	2016	2017	2018	2019	2020	2021	2022
COLLEGE OF ENGINEERING	7,623	8,221	9,503	10,139	10,559	11,101	10,723	10,558	10,423	10,371	10,338	10,300
Lower Division	1,624	1,762	2,026	2,033	2,266	2,029	1,992	1,986	1,981	1,972	1,972	1,973
Upper Division	4,961	5,425	6,360	7,176	7,510	8,376	8,051	7,906	7,792	7,760	7,738	7,709
Graduate Level	1,038	1,034	1,117	930	783	696	680	666	650	639	628	618
COLLEGE OF TROP AG & HUM RES ...	12,228	12,487	11,966	11,402	11,188	10,516	10,260	10,149	10,079	10,017	9,982	9,959
Lower Division	4,733	4,901	4,794	4,413	4,217	3,955	3,909	3,914	3,925	3,909	3,905	3,915
Upper Division	6,309	6,402	5,891	5,800	5,865	5,293	5,112	5,023	4,968	4,940	4,934	4,915
Graduate Level	1,186	1,184	1,281	1,189	1,106	1,268	1,239	1,212	1,186	1,168	1,143	1,129
SCHOOL OF MEDICINE	12,777	13,009	13,185	13,583	14,170	13,522	13,380	13,309	13,244	13,175	13,128	13,097
Lower Division	2,155	2,373	2,218	2,428	2,691	2,763	2,732	2,739	2,742	2,729	2,725	2,734
Upper Division	1,129	1,329	1,590	1,696	1,786	1,567	1,511	1,479	1,457	1,446	1,439	1,433
Graduate Level	9,493	9,307	9,377	9,459	9,693	9,192	9,137	9,091	9,045	9,000	8,964	8,930
SCHOOL OF NURSING	6,958	8,076	8,319	8,123	7,090	5,891	5,723	5,630	5,547	5,511	5,482	5,461
Lower Division	1,611	1,467	1,583	1,348	829	864	844	838	834	831	828	831
Upper Division	3,091	4,362	4,564	4,567	3,953	3,064	2,948	2,876	2,831	2,822	2,804	2,804
Graduate Level	2,256	2,247	2,172	2,208	2,308	1,963	1,931	1,916	1,882	1,858	1,850	1,826
SCHOOL OF SOCIAL WORK	3,279	2,993	3,422	3,400	3,559	3,199	3,110	3,039	2,989	2,957	2,925	2,885
Lower Division	114	93	99	99	96	96	95	95	95	95	95	96
Upper Division	699	708	802	862	1,023	882	846	827	818	818	818	809
Graduate Level	2,466	2,192	2,521	2,439	2,440	2,221	2,169	2,117	2,076	2,044	2,012	1,980
SCHOOL OF LAW	5,042	4,843	4,394	4,489	4,232	4,223	4,221	4,219	4,217	4,215	4,214	4,213
Graduate Level	5,042	4,843	4,394	4,489	4,232	4,223	4,221	4,219	4,217	4,215	4,214	4,213

1/ Military Studies is included with Social Sciences, College of Arts & Sciences.

2/ Includes National Student Exchange and Study Abroad beginning Fall 2012.

TABLE 4
FULL-TIME EQUIVALENT COURSE ENROLLMENT SERVED BY COLLEGE
UNIVERSITY OF HAWAI‘I AT MĀNOA
FALL 2011 TO FALL 2022

COLLEGE / FALL SEMESTER	HISTORICAL						PROJECTED					
	2011	2012	2013	2014	2015	2016	2017	2018	2019	2020	2021	2022
TOTAL	16,424	16,704	16,521	16,193	15,870	15,150	14,824	14,704	14,609	14,526	14,473	14,443
Lower Division	6,864	7,073	6,993	6,598	6,390	6,197	6,129	6,145	6,158	6,132	6,126	6,145
Upper Division	5,761	5,985	6,064	6,151	6,066	5,692	5,493	5,405	5,342	5,326	5,311	5,292
Graduate Level	3,799	3,646	3,464	3,444	3,414	3,261	3,202	3,154	3,109	3,068	3,036	3,006
COLLEGE OF ARTS & SCIENCES 1/ ...	9,259	9,291	9,093	8,791	8,464	8,083	7,922	7,890	7,857	7,822	7,800	7,796
Lower Division	5,302	5,399	5,278	4,985	4,775	4,591	4,544	4,560	4,569	4,551	4,547	4,562
Upper Division	3,064	3,027	3,019	3,004	2,938	2,778	2,686	2,651	2,623	2,618	2,611	2,601
Graduate Level	893	865	796	802	751	714	692	679	665	653	642	633
Arts & Humanities	2,003	1,864	1,784	1,743	1,646	1,516	1,484	1,477	1,471	1,464	1,460	1,459
Lower Division	1,039	965	952	883	824	782	774	777	780	776	776	778
Upper Division	807	755	702	741	696	622	602	594	588	586	584	582
Graduate Level	157	144	130	119	126	112	108	106	103	102	100	99
Languages, Ling & Lit	2,128	2,144	2,070	1,975	1,912	1,795	1,759	1,750	1,744	1,736	1,730	1,728
Lower Division	1,266	1,319	1,259	1,205	1,143	1,075	1,061	1,062	1,063	1,059	1,057	1,059
Upper Division	684	664	653	604	615	572	556	549	544	543	541	539
Graduate Level	178	161	158	166	154	148	142	139	137	134	132	130
Natural Sciences	2,433	2,585	2,676	2,643	2,599	2,479	2,434	2,431	2,422	2,412	2,406	2,408
Lower Division	1,849	1,944	1,972	1,902	1,878	1,801	1,780	1,787	1,789	1,783	1,781	1,788
Upper Division	355	410	482	511	492	462	444	438	431	431	430	428
Graduate Level	229	231	222	230	229	216	210	206	202	198	195	192
Social Sciences 1/	2,581	2,556	2,423	2,285	2,173	2,151	2,106	2,094	2,084	2,074	2,068	2,065
Lower Division	1,089	1,105	1,021	899	836	834	831	836	840	836	836	840
Upper Division	1,174	1,137	1,124	1,113	1,106	1,090	1,054	1,041	1,031	1,029	1,027	1,023
Graduate Level	318	314	278	273	231	227	221	217	213	209	205	202
Other Arts & Sciences	114	142	140	145	134	142	139	138	136	136	136	136
Lower Division 2/	59	66	74	96	94	99	98	98	97	97	97	97
Upper Division	44	61	58	35	29	32	30	29	29	29	29	29
Graduate Level	11	15	8	14	11	11	11	11	10	10	10	10

TABLE 4
FULL-TIME EQUIVALENT COURSE ENROLLMENT SERVED BY COLLEGE
UNIVERSITY OF HAWAII AT MĀNOA
FALL 2011 TO FALL 2022

COLLEGE / FALL SEMESTER	HISTORICAL						PROJECTED					
	2011	2012	2013	2014	2015	2016	2017	2018	2019	2020	2021	2022
SCH OF HAWN KNOWLEDGE	486	545	546	518	508	480	474	471	472	469	468	469
Lower Division	370	411	424	388	390	375	372	372	374	372	372	373
Upper Division	84	116	98	110	98	83	80	78	77	77	76	76
Graduate Level	32	18	24	20	20	22	22	21	21	20	20	20
SCH OF PACIFIC & ASIAN ST	116	108	113	102	91	84	82	81	80	80	80	79
Lower Division	43	45	44	31	27	32	32	32	32	32	32	32
Upper Division	42	38	40	50	46	36	35	34	34	34	34	33
Graduate Level	31	25	29	21	18	16	15	15	14	14	14	14
SCH OF OCEAN & EARTH SCI TECH ..	289	290	279	295	302	285	280	277	275	272	271	271
Lower Division	118	130	132	127	129	130	129	129	130	129	129	130
Upper Division	72	69	57	71	73	74	72	71	70	69	69	69
Graduate Level	99	91	90	97	100	81	79	77	75	74	73	72
SCHOOL OF ARCHITECTURE	239	208	220	197	197	189	182	175	171	166	163	160
Lower Division	63	46	50	43	50	56	56	56	56	56	56	56
Upper Division	55	57	44	49	55	57	55	53	53	52	52	52
Graduate Level (DArch)	121	105	126	105	92	76	71	66	62	58	55	52
COLLEGE OF BUSINESS ADMIN	1,104	1,148	1,164	1,185	1,154	1,076	1,043	1,024	1,011	1,005	1,001	994
Lower Division	190	202	215	194	186	188	185	185	185	185	185	185
Upper Division	657	676	721	727	695	633	608	595	587	585	584	581
Graduate Level	257	270	228	264	273	255	250	244	239	235	232	228
SCH OF TRAVEL INDUSTRY MGT	186	199	193	213	224	225	219	215	213	213	211	211
Lower Division	58	62	52	59	64	60	59	59	59	59	58	58
Upper Division	120	134	138	146	154	158	153	150	148	148	147	147
Graduate Level	8	3	3	8	6	7	7	6	6	6	6	6

TABLE 4
FULL-TIME EQUIVALENT COURSE ENROLLMENT SERVED BY COLLEGE
UNIVERSITY OF HAWAI'I AT MĀNOA
FALL 2011 TO FALL 2022

COLLEGE / FALL SEMESTER	HISTORICAL						PROJECTED					
	2011	2012	2013	2014	2015	2016	2017	2018	2019	2020	2021	2022
COLLEGE OF EDUCATION	1,193	1,260	1,176	1,136	1,203	1,170	1,137	1,122	1,112	1,103	1,095	1,090
Lower Division	38	74	82	84	96	117	114	114	114	113	113	113
Upper Division	589	654	667	655	666	592	572	565	559	558	555	554
Graduate Level	566	532	427	397	441	461	451	443	439	432	427	423
COLLEGE OF ENGINEERING	525	564	653	691	717	753	727	715	705	701	699	698
Lower Division	108	117	135	134	151	136	133	132	132	131	131	132
Upper Division	330	361	424	479	501	559	537	527	519	517	516	514
Graduate Level	87	86	94	78	65	58	57	56	54	53	52	52
COLLEGE OF TROP AG & HUM RES ...	836	851	818	782	764	723	705	697	692	687	684	683
Lower Division	316	326	319	294	281	265	261	261	262	261	260	261
Upper Division	421	426	392	387	391	353	341	335	331	329	329	328
Graduate Level	99	99	107	101	92	105	103	101	99	97	95	94
SCHOOL OF MEDICINE	1,009	1,025	1,037	1,063	1,105	1,054	1,044	1,040	1,034	1,028	1,025	1,022
Lower Division	143	158	149	162	180	184	182	183	183	182	182	182
Upper Division	74	89	106	112	118	105	101	99	97	96	96	96
Graduate Level	792	778	782	789	807	765	761	758	754	750	747	744
SCHOOL OF NURSING	501	575	592	578	510	426	414	408	402	398	396	394
Lower Division	107	97	106	90	55	57	56	56	56	55	55	55
Upper Division	206	291	305	304	263	205	197	192	189	188	187	187
Graduate Level	188	187	181	184	192	164	161	160	157	155	154	152
SCHOOL OF SOCIAL WORK	261	236	270	267	277	250	243	237	234	231	229	225
Lower Division	8	6	7	7	6	6	6	6	6	6	6	6
Upper Division	47	47	53	57	68	59	56	55	55	55	55	54
Graduate Level	206	183	210	203	203	185	181	176	173	170	168	165
SCHOOL OF LAW	420	404	367	375	354	352	352	352	351	351	351	351
Graduate Level	420	404	367	375	354	352	352	352	351	351	351	351

1/ Military Studies is included with Social Sciences, College of Arts & Sciences.

2/ Includes National Student Exchange and Study Abroad beginning Fall 2012.

TABLE 5
HEADCOUNT ENROLLMENT BY ATTENDANCE STATUS
UNIVERSITY OF HAWAI'I AT MĀNOA
FALL 2011 TO FALL 2022

ATTENDANCE STATUS	HISTORICAL						PROJECTED					
	2011	2012	2013	2014	2015	2016	2017	2018	2019	2020	2021	2022
TOTAL	20,429	20,426	20,006	19,507	18,865	18,056	17,653	17,486	17,347	17,234	17,147	17,085
Full-time.....	14,693	14,927	14,803	14,526	14,193	13,553	13,251	13,125	13,021	12,936	12,871	12,824
Lower Division	4,616	4,703	4,664	4,399	4,581	4,486	4,386	4,344	4,310	4,282	4,260	4,245
Upper Division	6,969	7,243	7,365	7,316	6,824	6,376	6,234	6,175	6,126	6,086	6,055	6,033
Graduate Level	3,108	2,981	2,774	2,811	2,788	2,691	2,631	2,606	2,585	2,568	2,556	2,546
Part-time	5,736	5,499	5,203	4,981	4,672	4,503	4,402	4,361	4,326	4,298	4,276	4,261
Lower Division 1/	555	517	512	498	534	547	535	530	525	522	519	518
Upper Division	2,088	2,072	1,842	1,813	1,654	1,600	1,564	1,550	1,537	1,527	1,519	1,514
Graduate Level	3,093	2,910	2,849	2,670	2,484	2,356	2,303	2,282	2,263	2,249	2,237	2,229

1/ Includes records with invalid data on education level.

Lower Division = Freshmen, Sophomores & Unclassified Undergraduate students.

Upper Division = Juniors & Seniors

APPENDIX A
HAWAI'I PUBLIC HIGH SCHOOL SENIORS BY SCHOOL DISTRICT
ACADEMIC YEARS 2010-11 TO 2021-22

SCHOOL DISTRICT	HISTORICAL						PROJECTED					
	2010-11	2011-12	2012-13	2013-14	2014-15	2015-16	2016-17	2017-18	2018-19	2019-20	2020-21	2021-22
TOTAL	9,602	9,897	9,588	9,794	9,516	9,625	9,104	9,938	9,456	9,428	9,652	9,743
O'ahu Districts	6,232	6,568	6,224	6,377	6,161	6,349	5,955	6,511	6,136	6,151	6,267	6,306
Honolulu District	1,668	1,710	1,666	1,735	1,616	1,653	1,477	1,688	1,566	1,584	1,546	1,603
Central District	1,784	1,964	1,803	1,866	1,790	1,849	1,703	1,843	1,823	1,778	1,815	1,793
Leeward District	2,002	2,075	2,044	2,056	1,995	2,083	2,110	2,257	2,050	2,090	2,200	2,218
Windward District	778	819	711	720	760	764	665	723	697	699	706	692
Neighbor Island Districts	3,133	3,065	3,102	3,103	3,048	2,931	2,804	3,082	2,975	2,932	3,040	3,092
Hawai'i District	1,382	1,384	1,348	1,368	1,315	1,228	1,202	1,297	1,394	1,307	1,335	1,352
Maui District	1,156	1,087	1,182	1,163	1,193	1,103	1,090	1,213	1,056	1,099	1,154	1,179
Kaua'i District	595	594	572	572	540	600	512	572	525	526	551	561
Other Schools	237	264	262	314	307	345	345	345	345	345	345	345
Charter Schools 1/	237	264	262	314	307	345	345	345	345	345	345	345

1/ Includes all districts. Charter School projection not provided by the DOE beginning 2014 (set constant at 2016 level).

Source: Department of Education for the State of Hawai'i; November 2016. Regular Education seniors only.

APPENDIX B
HAWAII HIGH SCHOOL GRADUATES
WICHE HISTORICAL AND PROJECTED - 2016 SERIES

Academic Year	Total	Pct Chnge	Public	Pct Chnge	Private	Pct Chnge
2000-01	13,490		10,102		3,388	
2001-02	13,536	0.3	10,452	3.5	3,084	-9.0
2002-03	12,793	-5.5	10,013	-4.2	2,780	-9.9
2003-04	12,953	1.3	10,324	3.1	2,629	-5.4
2004-05	13,396	3.4	10,813	4.7	2,583	-1.7
2005-06	13,080	-2.4	10,922	1.0	2,158	-16.5
2006-07	13,448	2.8	11,063	1.3	2,385	10.5
2007-08	14,137	5.1	11,613	5.0	2,524	5.8
2008-09	14,167	0.2	11,508	-0.9	2,659	5.3
2009-10	13,692	-3.4	10,998	-4.4	2,694	1.3
2010-11	13,476	-1.6	10,716	-2.6	2,760	2.4
2011-12	14,113	4.7	11,360	6.0	2,753	-0.3
2012-13	13,733	-2.7	10,790	-5.0	2,943	6.9
2013-14	14,088	2.6	11,063	2.5	3,025	2.8
2014-15	13,818	-1.9	10,862	-1.8	2,956	-2.3
2015-16	13,349	-3.4	10,580	-2.6	2,769	-6.3
2016-17	13,330	-0.1	10,466	-1.1	2,864	3.4
2017-18	14,043	5.3	11,070	5.8	2,973	3.8
2018-19	13,702	-2.4	10,613	-4.1	3,089	3.9
2019-20	14,103	2.9	11,163	5.2	2,940	-4.8
2020-21	14,359	1.8	11,350	1.7	3,009	2.3
2021-22	14,575	1.5	11,512	1.4	3,063	1.8
2022-23	14,856	1.9	11,882	3.2	2,974	-2.9
2023-24	15,221	2.5	12,015	1.1	3,206	7.8
2024-25	15,838	4.1	12,627	5.1	3,211	0.2
2025-26	15,866	0.2	12,603	-0.2	3,263	1.6
2026-27	15,376	-3.1	12,212	-3.1	3,164	-3.0
2027-28	15,504	0.8	12,323	0.9	3,181	0.5
2028-29	15,455	-0.3	12,275	-0.4	3,180	0.0
2029-30	15,507	0.3	12,325	0.4	3,182	0.1
2030-31	15,490	-0.1	12,308	-0.1	3,182	0.0
2031-32	15,130	-2.3	12,021	-2.3	3,109	-2.3

Note: Horizontal line delimits actual from projected numbers.

Note: WICHE "Historical" data may differ from UH IRO compiled data shown in the MAPS reports on the High School Background of First-Time Students.

SOURCE: "Knocking at the Door, Projections of High School Graduates," December 2016; WICHE.