

APPLICATIONS PROCESSED
UNIVERSITY OF HAWAI'I COMMUNITY COLLEGES
FALL 2007

Institutional Research Office

University of Hawai'i

February 2008

File Reference: Management and Planning Support Folder, Students

Reports available online at: <http://www.hawaii.edu/iro/maps.htm>

University of Hawai'i Community Colleges

Figure 1
Applications Processed - All UHCC Campuses

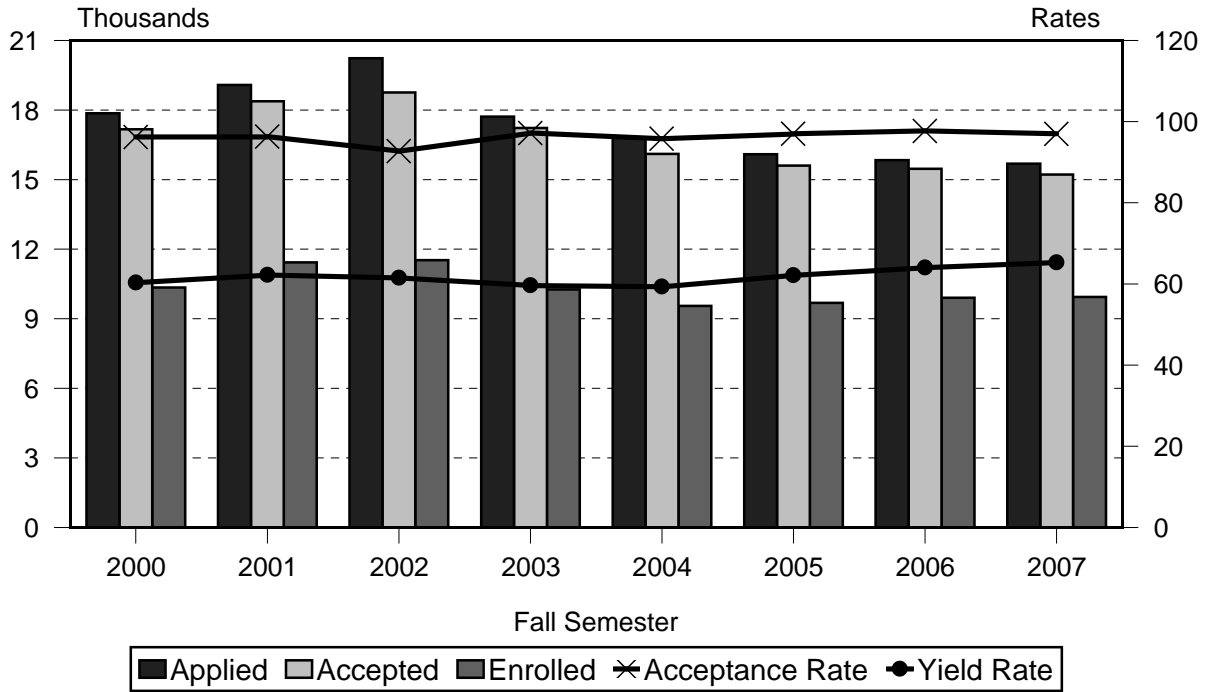
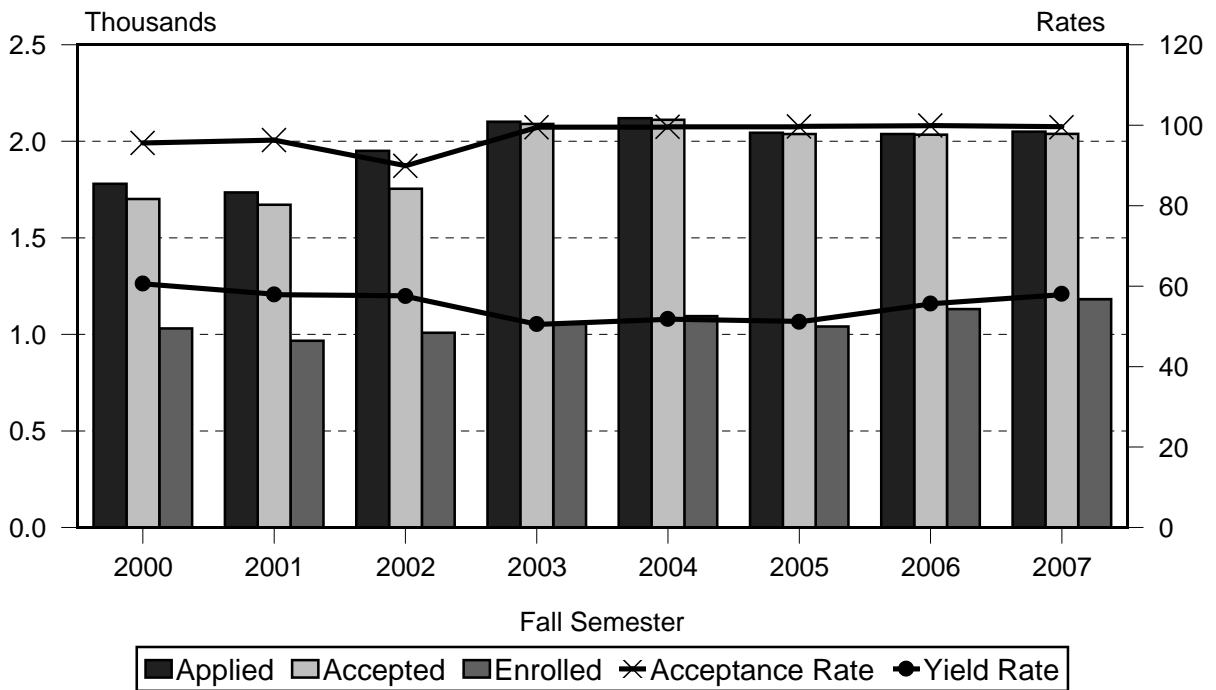


Figure 2
Applications Processed - Hawai'i CC



University of Hawai'i Community Colleges

Figure 3 Applications Processed - Honolulu CC

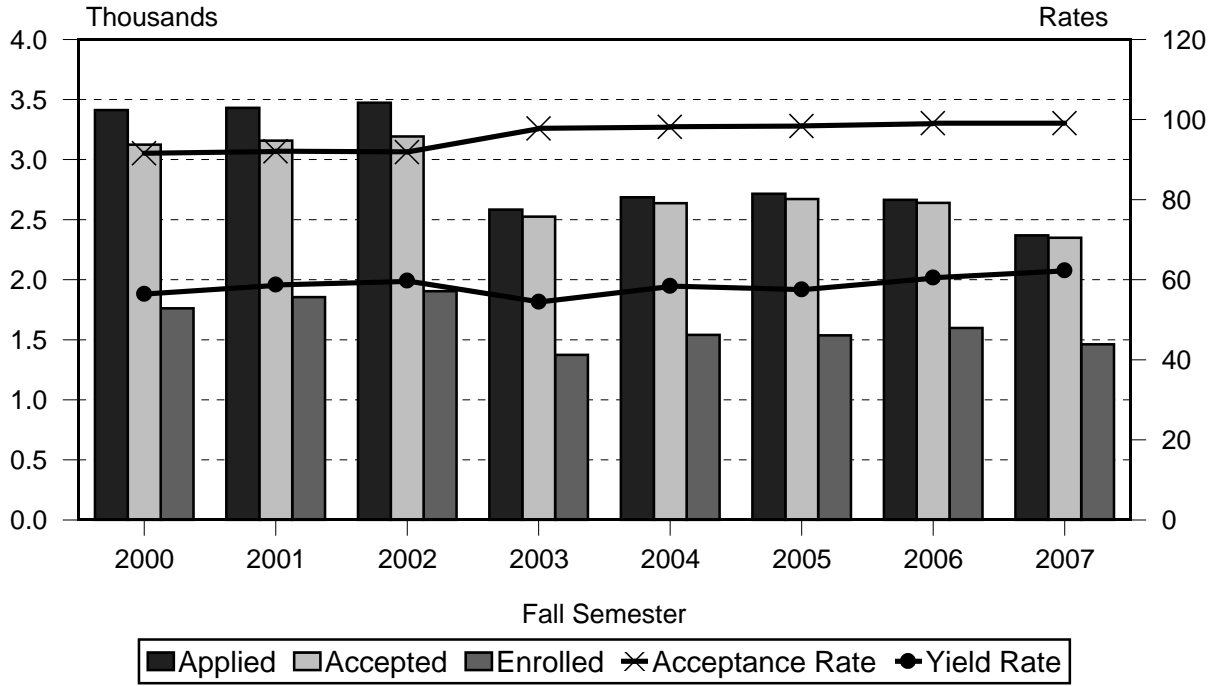
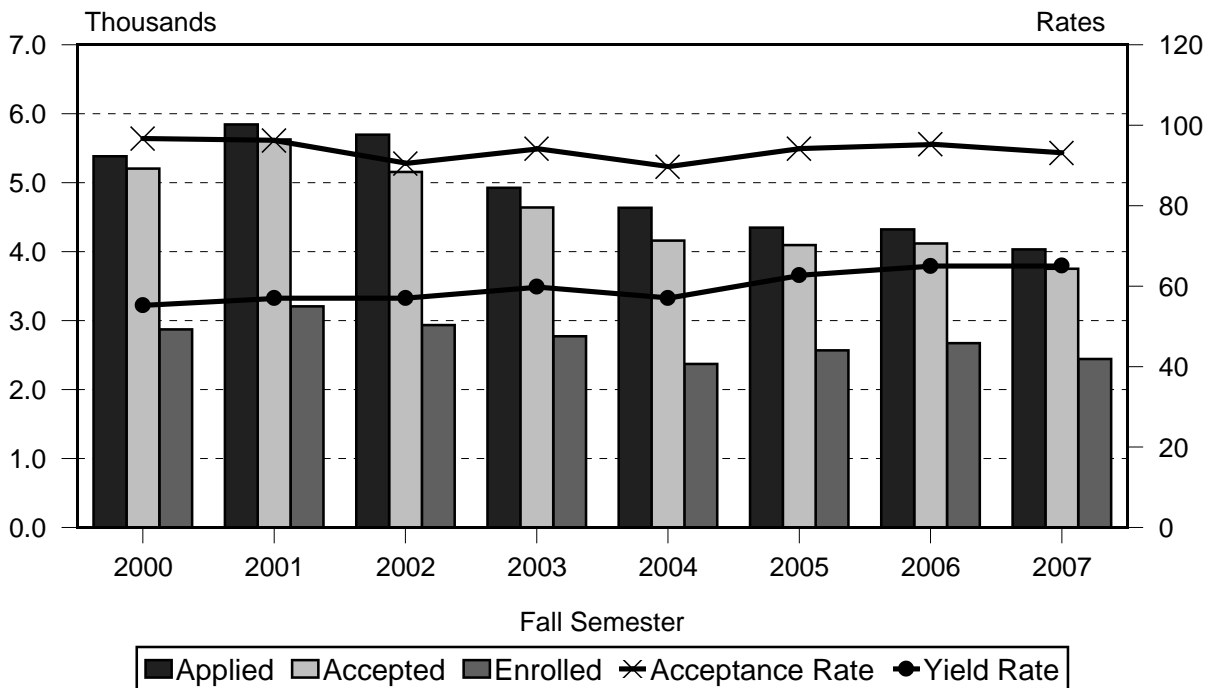


Figure 4 Applications Processed - Kapi'olani CC



University of Hawai'i Community Colleges

Figure 5 Applications Processed - Kaua'i CC

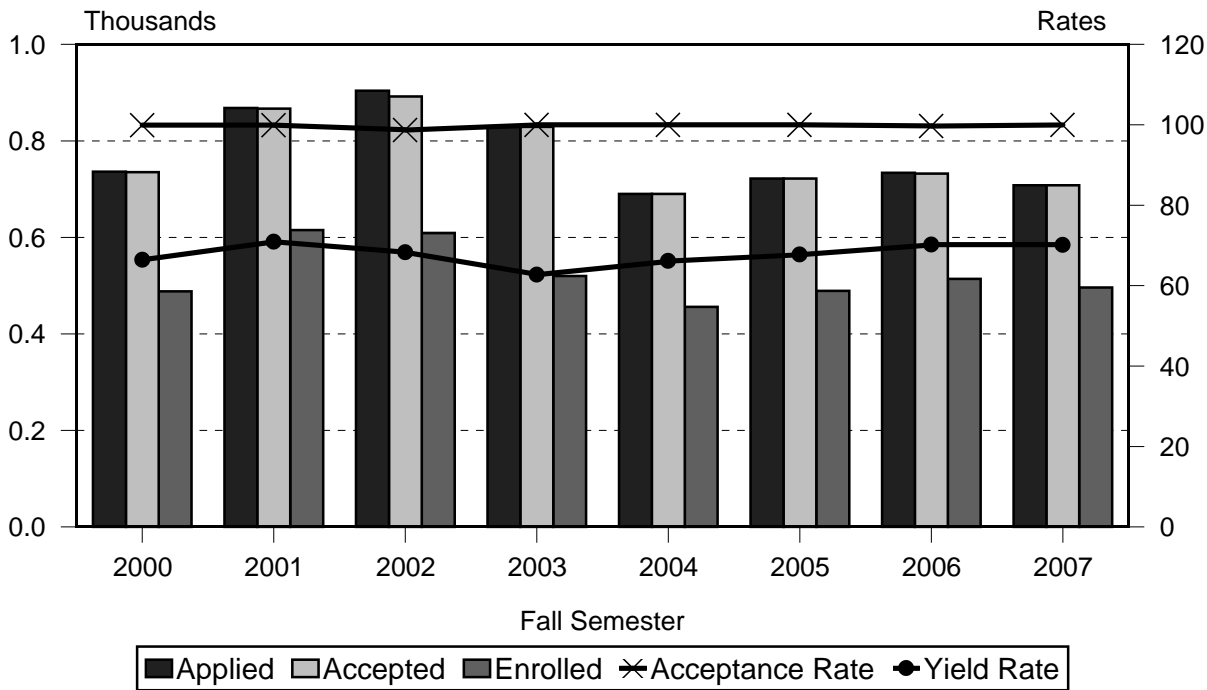
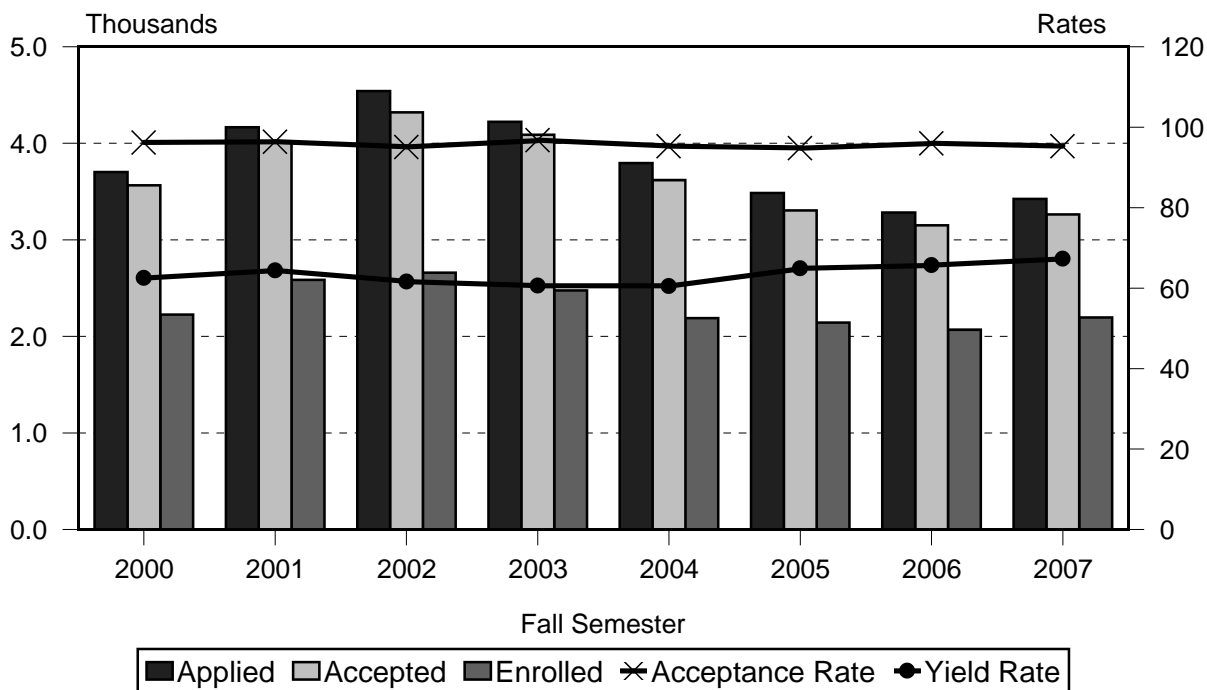


Figure 6 Applications Processed - Leeward CC



University of Hawai'i Community Colleges

Figure 7 Applications Processed - Maui CC

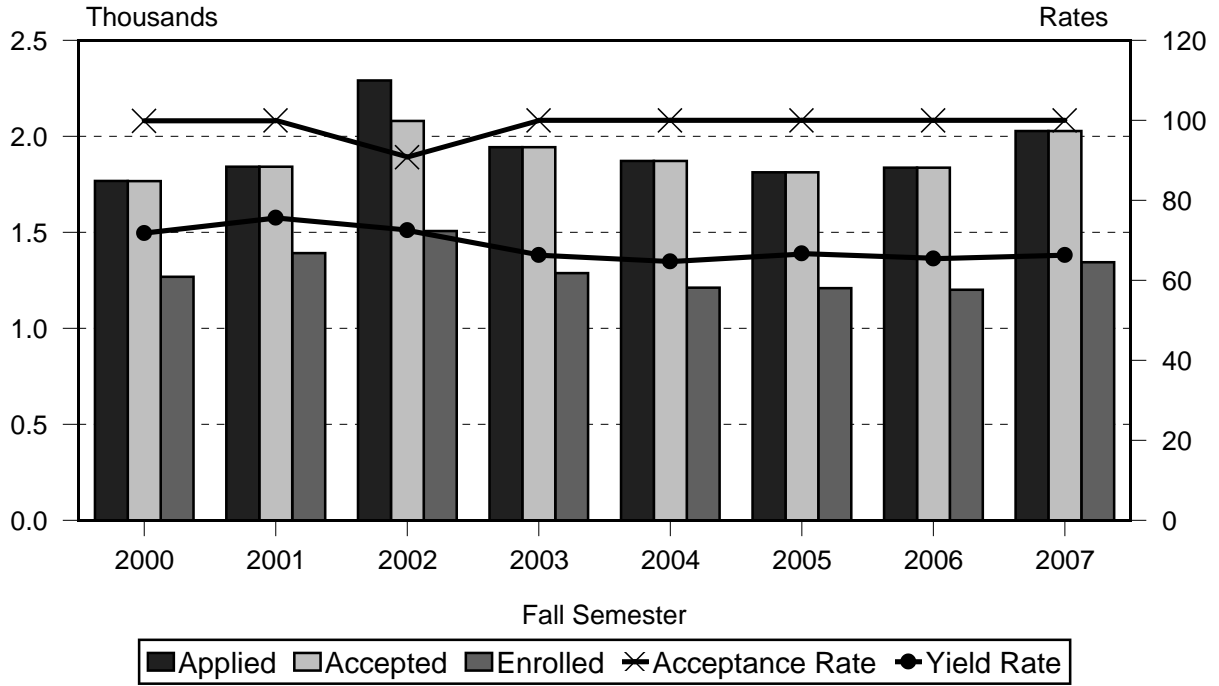
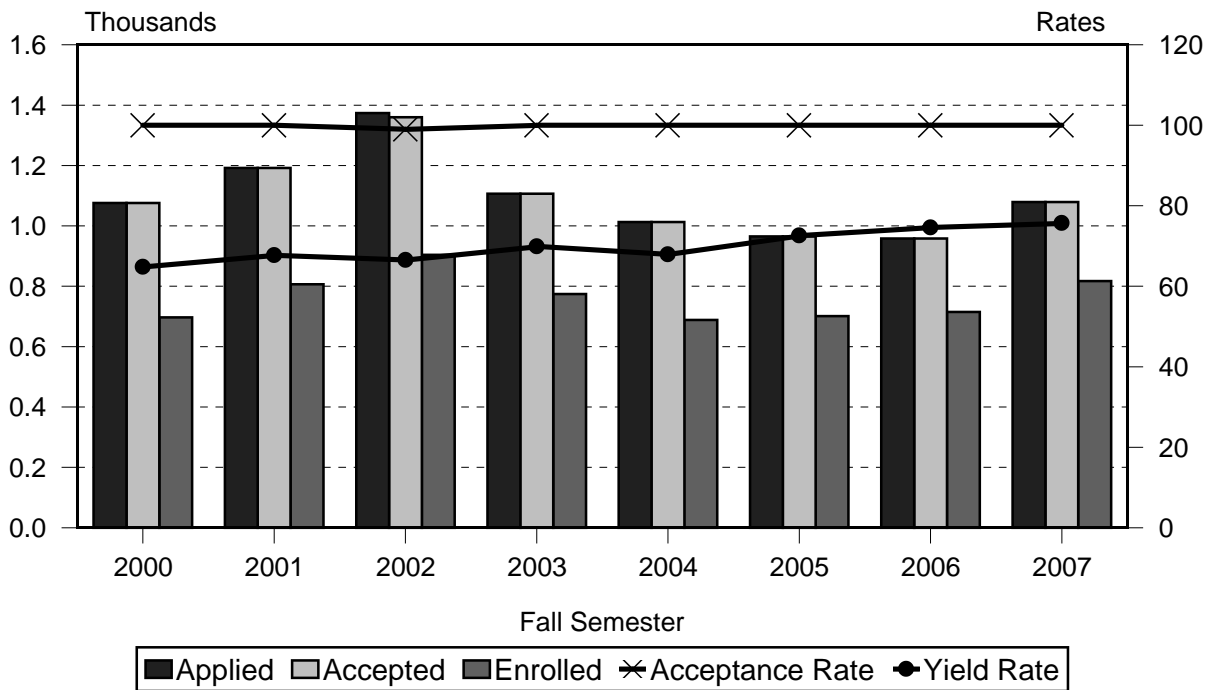


Figure 8 Applications Processed - Windward CC



University of Hawai'i Community Colleges

Figure 9 Total UHCC Applications by Gender, Fall 2007

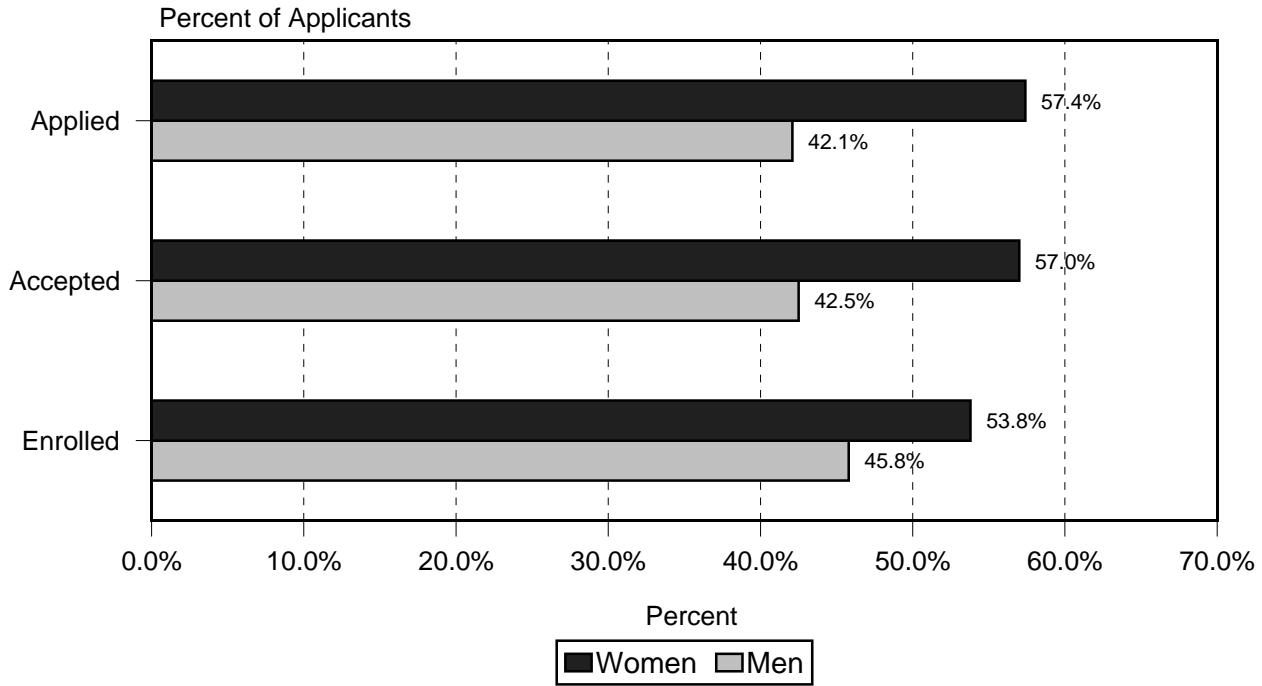


Figure 10 Total UHCC Applications by Ethnicity, Fall 2007

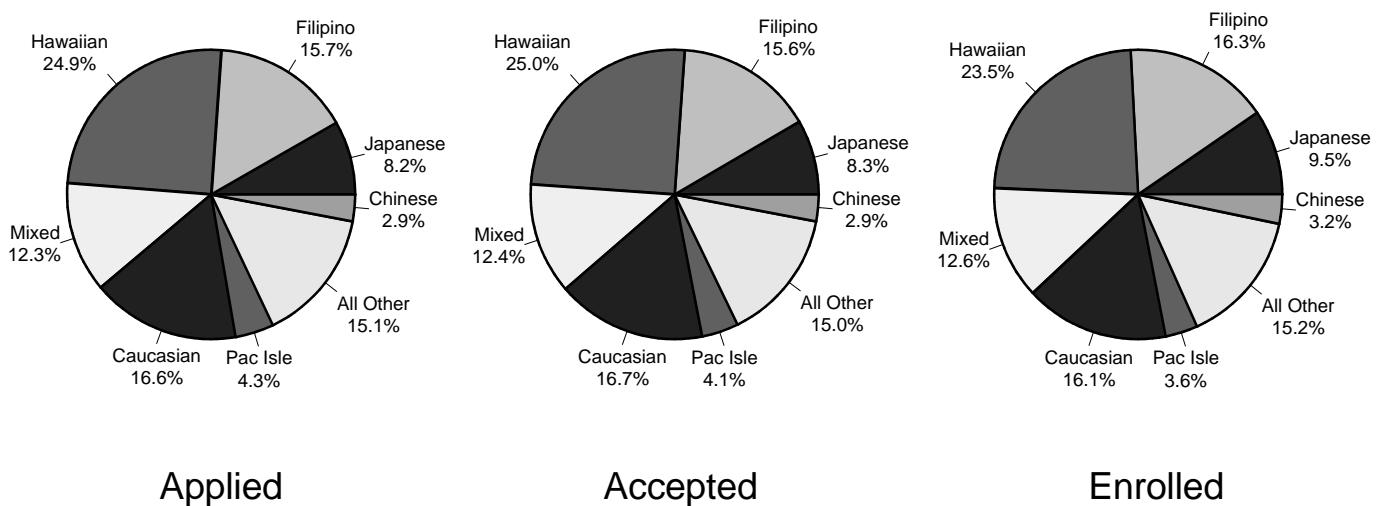


TABLE 1
 APPLICATIONS PROCESSED
 UNIVERSITY OF HAWAI'I, COMMUNITY COLLEGES
 FALL 2003 TO FALL 2007

STUDENT LEVEL	FALL SEMESTER									
	2003 1/ No. V%		2004 No. V%		2005 No. V%		2006 No. V%		2007 No. V%	
TOTAL	17,715	100.0	16,813	100.0	16,095	100.0	15,838	100.0	15,691	100.0
Accepted; % of Total (Acceptance Rate) .	17,226	97.2	16,103	95.8	15,609	97.0	15,471	97.7	15,220	97.0
Enrolled; % of Accepted (Yield Rate)	10,260	59.6	9,553	59.3	9,688	62.1	9,904	64.0	9,942	65.3
Not Enrolled; % of Accepted	6,966	40.4	6,550	40.7	5,921	37.9	5,567	36.0	5,278	34.7
Denied / Redirected	324	1.8	447	2.7	294	1.8	154	1.0	115	0.7
Incomplete / Pending / No Action	115	0.6	223	1.3	175	1.1	199	1.3	344	2.2
Cancelled	50	0.3	40	0.2	17	0.1	14	0.1	12	0.1
<i>No Data 2/</i>					465		476		617	
HAWAI'I COMMUNITY COLLEGE	2,101	100.0	2,120	100.0	2,044	100.0	2,038	100.0	2,050	100.0
Accepted; % of Total (Acceptance Rate) .	2,090	99.5	2,112	99.6	2,037	99.7	2,035	99.9	2,039	99.5
Enrolled; % of Accepted (Yield Rate)	1,055	50.5	1,095	51.8	1,041	51.1	1,131	55.6	1,182	58.0
Not Enrolled; % of Accepted	1,035	49.5	1,017	48.2	996	48.9	904	44.4	857	42.0
Denied / Redirected									2	0.1
Incomplete / Pending / No Action	2	0.1							1	<0.1
Cancelled	9	0.4	8	0.4	7	0.3	3	0.1	8	0.4
<i>No Data 2/</i>					203		158		244	
HONOLULU COMMUNITY COLLEGE	2,584	100.0	2,686	100.0	2,716	100.0	2,665	100.0	2,370	100.0
Accepted; % of Total (Acceptance Rate) .	2,526	97.8	2,637	98.2	2,672	98.4	2,640	99.1	2,349	99.1
Enrolled; % of Accepted (Yield Rate)	1,374	54.4	1,541	58.4	1,536	57.5	1,598	60.5	1,463	62.3
Not Enrolled; % of Accepted	1,152	45.6	1,096	41.6	1,136	42.5	1,042	39.5	886	37.7
Denied / Redirected	43	1.7	41	1.5	44	1.6	23	0.9	19	0.8
Incomplete / Pending / No Action	1	<0.1								
Cancelled	14	0.5	8	0.3			2	0.1	2	0.1
<i>No Data 2/</i>					224		250		268	
KAPI'OLANI COMMUNITY COLLEGE	4,926	100.0	4,636	100.0	4,349	100.0	4,322	100.0	4,032	100.0
Accepted; % of Total (Acceptance Rate) .	4,641	94.2	4,160	89.7	4,095	94.2	4,118	95.3	3,753	93.1
Enrolled; % of Accepted (Yield Rate)	2,773	59.8	2,371	57.0	2,568	62.7	2,675	65.0	2,443	65.1
Not Enrolled; % of Accepted	1,868	40.2	1,789	43.0	1,527	37.3	1,443	35.0	1,310	34.9
Denied / Redirected	251	5.1	393	8.5	224	5.2	104	2.4	84	2.1
Incomplete / Pending / No Action	7	0.1	59	1.3	20	0.5	93	2.2	193	4.8
Cancelled	27	0.5	24	0.5	10	0.2	7	0.2	2	<0.1

TABLE 1 (cont.)

STUDENT LEVEL	FALL SEMESTER									
	2003 1/ No. V%		2004 No. V%		2005 No. V%		2006 No. V%		2007 No. V%	
KAUA'I COMMUNITY COLLEGE	829	100.0	690	100.0	722	100.0	734	100.0	708	100.0
Accepted; % of Total (Acceptance Rate) .	829	100.0	690	100.0	722	100.0	732	99.7	708	100.0
Enrolled; % of Accepted (Yield Rate)	520	62.7	456	66.1	489	67.7	514	70.2	496	70.1
Not Enrolled; % of Accepted	309	37.3	234	33.9	233	32.3	218	29.8	212	29.9
Cancelled							2	0.3		
No Data 2/					2		3		2	
LEEWARD COMMUNITY COLLEGE	4,224	100.0	3,796	100.0	3,486	100.0	3,284	100.0	3,424	100.0
Accepted; % of Total (Acceptance Rate) .	4,089	96.8	3,619	95.3	3,305	94.8	3,151	96.0	3,264	95.3
Enrolled; % of Accepted (Yield Rate)	2,476	60.6	2,190	60.5	2,144	64.9	2,070	65.7	2,197	67.3
Not Enrolled; % of Accepted	1,613	39.4	1,429	39.5	1,161	35.1	1,081	34.3	1,067	32.7
Denied / Redirected	30	0.7	13	0.3	26	0.7	27	0.8	10	0.3
Incomplete / Pending / No Action	105	2.5	164	4.3	155	4.4	106	3.2	150	4.4
No Data 2/					16		22		32	
MAUI COMMUNITY COLLEGE	1,944	100.0	1,872	100.0	1,813	100.0	1,837	100.0	2,028	100.0
Accepted; % of Total (Acceptance Rate) .	1,944	100.0	1,872	100.0	1,813	100.0	1,837	100.0	2,028	100.0
Enrolled; % of Accepted (Yield Rate)	1,288	66.3	1,212	64.7	1,209	66.7	1,201	65.4	1,344	66.3
Not Enrolled; % of Accepted	656	33.7	660	35.3	604	33.3	636	34.6	684	33.7
No Data 2/					19		40		65	
WINDWARD COMMUNITY COLLEGE	1,107	100.0	1,013	100.0	965	100.0	958	100.0	1,079	100.0
Accepted; % of Total (Acceptance Rate) .	1,107	100.0	1,013	100.0	965	100.0	958	100.0	1,079	100.0
Enrolled; % of Accepted (Yield Rate)	774	69.9	688	67.9	701	72.6	715	74.6	817	75.7
Not Enrolled; % of Accepted	333	30.1	325	32.1	264	27.4	243	25.4	262	24.3
No Data 2/					1		3		6	

1/ Drop in number of applications may be due to a change in business practice and policy. With the migration to Banner, applicants need only apply to one community college campus. In addition, acceptance at one of the community college campuses means a student may attend any community college campus.

2/ Data reflect applications where no decision was made. These applications are shown for information only and are not included in the applications processed counts.

Sources: Fall 2003 and Fall 2004 data are from Banner Student Information System; Effective Fall 2005, data are from Banner Operational Data Store (ODS) IRO_ADMISSIONS.

TABLE 2
 SELECTED CHARACTERISTICS
 TOTAL APPLICANTS
 UNIVERSITY OF HAWAI'I, COMMUNITY COLLEGES
 FALL 2007

CHARACTERISTICS	APPLIED		ACCEPTED		ENROLLED 1/		ACCEPTANCE RATE	YIELD RATE
	No.	V%	No.	V%	No.	V%		
TOTAL	15,691	100.0	15,220	100.0	9,942	100.0	97.0	65.3
GENDER:								
Men	6,601	42.1	6,462	42.5	4,269	42.9	97.9	66.1
Women	9,012	57.4	8,682	57.0	5,629	56.6	96.3	64.8
No Data	78	0.5	76	0.5	44	0.4	97.4	57.9
PERMANENT ADDRESS:								
Hawai'i	14,683	93.6	14,254	93.7	9,398	94.5	97.1	65.9
Other than Hawai'i	728	4.6	689	4.5	375	3.8	94.6	54.4
U.S. Mainland 2/	440	2.8	416	2.7	177	1.8	94.5	42.5
U.S. Related Areas 3/	85	0.5	73	0.5	41	0.4	85.9	56.2
Foreign	203	1.3	200	1.3	157	1.6	98.5	78.5
No Data	280	1.8	277	1.8	169	1.7	98.9	61.0
TUITION STATUS:								
Resident Subtotal	13,422	85.5	13,245	87.0	8,779	88.3	98.7	66.3
Resident	13,418	85.5	13,241	87.0	8,776	88.3	98.7	66.3
Resident Converted	4	<0.1	4	<0.1	3	<0.1	100.0	75.0
Non-Resident Subtotal	2,269	14.5	1,975	13.0	1,163	11.7	87.0	58.9
Non Exempted	1,592	10.1	1,305	8.6	726	7.3	82.0	55.6
Revised Institutional Exemption 4/	112	0.7	110	0.7	62	0.6	98.2	56.4
Exempted	565	3.6	560	3.7	375	3.8	99.1	67.0
Ethnic Hawaiian	100	0.6	99	0.7	64	0.6	99.0	64.6
Faculty / Staff	8	0.1	8	0.1	4	<0.1	100.0	50.0
Hawai'i National Guard 5/	12	0.1	12	0.1	10	0.1	100.0	83.3
Institutional	3	<0.1	3	<0.1	2	<0.1	100.0	66.7
Military	442	2.8	438	2.9	295	3.0	99.1	67.4
AGE:								
Mean Age	24.3		24.3		23.9			
Under 18	1,997	12.7	1,925	12.6	1,350	13.6	96.4	70.1
18-19	5,311	33.8	5,167	33.9	3,509	35.3	97.3	67.9
20-21	1,703	10.9	1,655	10.9	1,090	11.0	97.2	65.9
22-24	1,717	10.9	1,675	11.0	1,091	11.0	97.6	65.1
25-29	1,837	11.7	1,782	11.7	1,093	11.0	97.0	61.3
30-34	1,001	6.4	957	6.3	563	5.7	95.6	58.8
35-59	1,975	12.6	1,913	12.6	1,155	11.6	96.9	60.4
60 and over	142	0.9	141	0.9	88	0.9	99.3	62.4
No Data 6/	8	0.1	5	<0.1	3	<0.1	62.5	60.0
ETHNICITY:								
Asian / Pacific Islander	10,107	64.4	9,796	64.4	6,484	65.2	96.9	66.2
Asian	5,525	35.2	5,367	35.3	3,786	38.1	97.1	70.5
Chinese	449	2.9	439	2.9	318	3.2	97.8	72.4
Filipino	2,467	15.7	2,381	15.6	1,620	16.3	96.5	68.0
Indian Subcontinent	8	0.1	8	0.1	6	0.1	100.0	75.0
Japanese	1,280	8.2	1,257	8.3	940	9.5	98.2	74.8
Korean	255	1.6	249	1.6	185	1.9	97.6	74.3
Laotian	41	0.3	36	0.2	24	0.2	87.8	66.7
Thai	22	0.1	22	0.1	16	0.2	100.0	72.7
Vietnamese	102	0.7	99	0.7	66	0.7	97.1	66.7
Other Asian	44	0.3	41	0.3	24	0.2	93.2	58.5
Mixed Asian	857	5.5	835	5.5	587	5.9	97.4	70.3

TABLE 2 (cont.)

CHARACTERISTICS	APPLIED		ACCEPTED		ENROLLED 1/		ACCEPTANCE RATE	YIELD RATE
	No.	V%	No.	V%	No.	V%		
Hawaiian / Pacific Islander	4,582	29.2	4,429	29.1	2,698	27.1	96.7	60.9
Guamanian or Chamorro	51	0.3	47	0.3	30	0.3	92.2	63.8
Hawaiian / Part-Hawaiian	3,903	24.9	3,798	25.0	2,338	23.5	97.3	61.6
Micronesia	135	0.9	121	0.8	68	0.7	89.6	56.2
Samoan	209	1.3	192	1.3	102	1.0	91.9	53.1
Tongan	58	0.4	54	0.4	39	0.4	93.1	72.2
Other Pacific Islander	73	0.5	68	0.4	35	0.4	93.2	51.5
Mixed Pacific Islander	153	1.0	149	1.0	86	0.9	97.4	57.7
Hispanic	406	2.6	389	2.6	235	2.4	95.8	60.4
Puerto Rican	22	0.1	22	0.1	12	0.1	100.0	54.5
Other Hispanic	365	2.3	350	2.3	209	2.1	95.9	59.7
Mixed Hispanic	19	0.1	17	0.1	14	0.1	89.5	82.4
Caucasian	2,602	16.6	2,535	16.7	1,598	16.1	97.4	63.0
Portuguese	39	0.2	39	0.3	25	0.3	100.0	64.1
Middle Easterner	1	<0.1						
Other Caucasian	2,562	16.3	2,496	16.4	1,573	15.8	97.4	63.0
African American	229	1.5	217	1.4	128	1.3	94.8	59.0
American Indian / Alaskan Native	64	0.4	63	0.4	36	0.4	98.4	57.1
Mixed Ethnic Background	1,933	12.3	1,881	12.4	1,253	12.6	97.3	66.6
No Response	350	2.2	339	2.2	208	2.1	96.9	61.4

Note: Total applications processed does not include records where no decision was made.

1/ Enrolled data taken from the IRO_Admissions file may not tie exactly to data shown in the MAPS enrollment reports, which come from the IRO_Base file.

2/ Includes U.S. Military overseas.

3/ Includes U.S. Possessions, Commonwealths and republics within the Compact of Free Association.

4/ Revised Institutional Exempt code assigned to students from the Pacific Islands who come from nations where there are no four-year institutions of higher education, effective Fall 2007. Students are charged 150% of resident tuition.

5/ New residency code for Hawai'i National Guard reservists, effective Spring 2007; students pay resident tuition.

6/ Includes records with age less than 14.

Source: Banner Operational Data Store (ODS) IRO_ADMISSIONS.

TABLE 2A
 SELECTED CHARACTERISTICS
 TOTAL APPLICANTS
 HAWAI'I COMMUNITY COLLEGE
 FALL 2007

CHARACTERISTICS	APPLIED		ACCEPTED		ENROLLED 1/		ACCEPTANCE RATE	YIELD RATE
	No.	V%	No.	V%	No.	V%		
TOTAL	2,050	100.0	2,039	100.0	1,182	100.0	99.5	58.0
GENDER:								
Men	838	40.9	834	40.9	470	39.8	99.5	56.4
Women	1,193	58.2	1,187	58.2	703	59.5	99.5	59.2
No Data	19	0.9	18	0.9	9	0.8	94.7	50.0
PERMANENT ADDRESS:								
Hawai'i	1,960	95.6	1,951	95.7	1,137	96.2	99.5	58.3
Other than Hawai'i	65	3.2	63	3.1	32	2.7	96.9	50.8
U.S. Mainland 2/	47	2.3	46	2.3	19	1.6	97.9	41.3
U.S. Related Areas 3/	4	0.2	4	0.2	2	0.2	100.0	50.0
Foreign	14	0.7	13	0.6	11	0.9	92.9	84.6
No Data	25	1.2	25	1.2	13	1.1	100.0	52.0
TUITION STATUS:								
Resident Subtotal	1,907	93.0	1,904	93.4	1,108	93.7	99.8	58.2
Resident	1,907	93.0	1,904	93.4	1,108	93.7	99.8	58.2
Non-Resident Subtotal	143	7.0	135	6.6	74	6.3	94.4	54.8
Non Exempted	118	5.8	110	5.4	56	4.7	93.2	50.9
Revised Institutional Exemption 4/	9	0.4	9	0.4	5	0.4	100.0	55.6
Exempted	16	0.8	16	0.8	13	1.1	100.0	81.3
Ethnic Hawaiian	15	0.7	15	0.7	12	1.0	100.0	80.0
Hawai'i National Guard 5/	1	<0.1	1	<0.1	1	0.1	100.0	100.0
AGE:								
Mean Age	24.0		24.0		24.2			
Under 18	326	15.9	325	15.9	179	15.1	99.7	55.1
18-19	767	37.4	765	37.5	427	36.1	99.7	55.8
20-21	186	9.1	181	8.9	129	10.9	97.3	71.3
22-24	165	8.0	164	8.0	110	9.3	99.4	67.1
25-29	197	9.6	197	9.7	103	8.7	100.0	52.3
30-34	123	6.0	123	6.0	71	6.0	100.0	57.7
35-59	265	12.9	263	12.9	152	12.9	99.2	57.8
60 and over	19	0.9	19	0.9	11	0.9	100.0	57.9
No Data 6/	2	0.1	2	0.1			100.0	
ETHNICITY:								
Asian / Pacific Islander	1,262	61.6	1,255	61.5	729	61.7	99.4	58.1
Asian	407	19.9	403	19.8	274	23.2	99.0	68.0
Chinese	7	0.3	7	0.3	5	0.4	100.0	71.4
Filipino	198	9.7	196	9.6	121	10.2	99.0	61.7
Indian Subcontinent	1	<0.1	1	<0.1			100.0	
Japanese	114	5.6	112	5.5	87	7.4	98.2	77.7
Korean	7	0.3	7	0.3	5	0.4	100.0	71.4
Thai	3	0.1	3	0.1	1	0.1	100.0	33.3
Vietnamese	3	0.1	3	0.1	3	0.3	100.0	100.0
Other Asian	4	0.2	4	0.2	3	0.3	100.0	75.0
Mixed Asian	70	3.4	70	3.4	49	4.1	100.0	70.0

TABLE 2A (cont.)

CHARACTERISTICS	APPLIED		ACCEPTED		ENROLLED 1/		ACCEPTANCE RATE	YIELD RATE
	No.	V%	No.	V%	No.	V%		
Hawaiian / Pacific Islander	855	41.7	852	41.8	455	38.5	99.6	53.4
Guamanian or Chamorro	2	0.1	2	0.1	1	0.1	100.0	50.0
Hawaiian / Part-Hawaiian	798	38.9	796	39.0	425	36.0	99.7	53.4
Micronesian	20	1.0	19	0.9	9	0.8	95.0	47.4
Samoan	9	0.4	9	0.4	5	0.4	100.0	55.6
Tongan	3	0.1	3	0.1	2	0.2	100.0	66.7
Other Pacific Islander	12	0.6	12	0.6	5	0.4	100.0	41.7
Mixed Pacific Islander	11	0.5	11	0.5	8	0.7	100.0	72.7
Hispanic	46	2.2	46	2.3	19	1.6	100.0	41.3
Puerto Rican	9	0.4	9	0.4	2	0.2	100.0	22.2
Other Hispanic	35	1.7	35	1.7	16	1.4	100.0	45.7
Mixed Hispanic	2	0.1	2	0.1	1	0.1	100.0	50.0
Caucasian	394	19.2	392	19.2	224	19.0	99.5	57.1
Portuguese	11	0.5	11	0.5	7	0.6	100.0	63.6
Other Caucasian	383	18.7	381	18.7	217	18.4	99.5	57.0
African American	24	1.2	23	1.1	15	1.3	95.8	65.2
American Indian / Alaskan Native	14	0.7	14	0.7	7	0.6	100.0	50.0
Mixed Ethnic Background	244	11.9	243	11.9	141	11.9	99.6	58.0
No Response	66	3.2	66	3.2	47	4.0	100.0	71.2

Note: Total applications processed does not include records where no decision was made.

1/ Enrolled data taken from the IRO_Admissions file may not tie exactly to data shown in the MAPS enrollment reports, which come from the IRO_Base file.

2/ Includes U.S. Military overseas.

3/ Includes U.S. Possessions, Commonwealths and republics within the Compact of Free Association.

4/ Revised Institutional Exempt code assigned to students from the Pacific Islands who come from nations where there are no four-year institutions of higher education, effective Fall 2007. Students are charged 150% of resident tuition.

5/ New residency code for Hawai'i National Guard reservists, effective Spring 2007; students pay resident tuition.

6/ Includes records with age less than 14.

Source: Banner Operational Data Store (ODS) IRO_ADMISSIONS.

**TABLE 2B
SELECTED CHARACTERISTICS
TOTAL APPLICANTS
HONOLULU COMMUNITY COLLEGE
FALL 2007**

CHARACTERISTICS	APPLIED		ACCEPTED		ENROLLED 1/		ACCEPTANCE RATE	YIELD RATE
	No.	V%	No.	V%	No.	V%		
TOTAL	2,370	100.0	2,349	100.0	1,463	100.0	99.1	62.3
GENDER:								
Men	1,262	53.2	1,252	53.3	766	52.4	99.2	61.2
Women	1,068	45.1	1,057	45.0	670	45.8	99.0	63.4
No Data	40	1.7	40	1.7	27	1.8	100.0	67.5
PERMANENT ADDRESS:								
Hawai'i	2,225	93.9	2,207	94.0	1,395	95.4	99.2	63.2
Other than Hawai'i	100	4.2	97	4.1	43	2.9	97.0	44.3
U.S. Mainland 2 /	63	2.7	62	2.6	21	1.4	98.4	33.9
U.S. Related Areas 3/	19	0.8	19	0.8	10	0.7	100.0	52.6
Foreign	18	0.8	16	0.7	12	0.8	88.9	75.0
No Data	45	1.9	45	1.9	25	1.7	100.0	55.6
TUITION STATUS:								
Resident Subtotal	2,111	89.1	2,094	89.1	1,326	90.6	99.2	63.3
Resident	2,111	89.1	2,094	89.1	1,326	90.6	99.2	63.3
Non-Resident Subtotal	259	10.9	255	10.9	137	9.4	98.5	53.7
Non Exempted	111	4.7	108	4.6	47	3.2	97.3	43.5
Revised Institutional Exemption 4/	16	0.7	15	0.6	6	0.4	93.8	40.0
Exempted	132	5.6	132	5.6	84	5.7	100.0	63.6
Ethnic Hawaiian	26	1.1	26	1.1	13	0.9	100.0	50.0
Military	106	4.5	106	4.5	71	4.9	100.0	67.0
AGE:								
Mean Age	24.2		24.3		24.1			
Under 18	277	11.7	275	11.7	170	11.6	99.3	61.8
18-19	780	32.9	770	32.8	491	33.6	98.7	63.8
20-21	260	11.0	258	11.0	159	10.9	99.2	61.6
22-24	280	11.8	278	11.8	171	11.7	99.3	61.5
25-29	286	12.1	284	12.1	187	12.8	99.3	65.8
30-34	182	7.7	181	7.7	98	6.7	99.5	54.1
35-59	292	12.3	290	12.3	179	12.2	99.3	61.7
60 and over	13	0.5	13	0.6	8	0.5	100.0	61.5
ETHNICITY:								
Asian / Pacific Islander	1,662	70.1	1,648	70.2	1,034	70.7	99.2	62.7
Asian	1,006	42.4	999	42.5	664	45.4	99.3	66.5
Chinese	113	4.8	112	4.8	65	4.4	99.1	58.0
Filipino	486	20.5	483	20.6	334	22.8	99.4	69.2
Indian Subcontinent	1	<0.1	1	<0.1	1	0.1	100.0	100.0
Japanese	189	8.0	186	7.9	127	8.7	98.4	68.3
Korean	32	1.4	32	1.4	22	1.5	100.0	68.8
Laotian	15	0.6	15	0.6	7	0.5	100.0	46.7
Thai	3	0.1	3	0.1	1	0.1	100.0	33.3
Vietnamese	31	1.3	31	1.3	17	1.2	100.0	54.8
Other Asian	8	0.3	8	0.3	6	0.4	100.0	75.0
Mixed Asian	128	5.4	128	5.4	84	5.7	100.0	65.6

TABLE 2B (cont.)

CHARACTERISTICS	APPLIED		ACCEPTED		ENROLLED 1/		ACCEPTANCE RATE	YIELD RATE
	No.	V%	No.	V%	No.	V%		
Hawaiian / Pacific Islander	656	27.7	649	27.6	370	25.3	98.9	57.0
Guamanian or Chamorro	8	0.3	8	0.3	3	0.2	100.0	37.5
Hawaiian / Part-Hawaiian	514	21.7	509	21.7	306	20.9	99.0	60.1
Micronesia	25	1.1	25	1.1	15	1.0	100.0	60.0
Samoa	57	2.4	56	2.4	19	1.3	98.2	33.9
Tongan	13	0.5	12	0.5	10	0.7	92.3	83.3
Other Pacific Islander	10	0.4	10	0.4	4	0.3	100.0	40.0
Mixed Pacific Islander	29	1.2	29	1.2	13	0.9	100.0	44.8
Hispanic	54	2.3	54	2.3	35	2.4	100.0	64.8
Puerto Rican	2	0.1	2	0.1	1	0.1	100.0	50.0
Other Hispanic	51	2.2	51	2.2	33	2.3	100.0	64.7
Mixed Hispanic	1	<0.1	1	<0.1	1	0.1	100.0	100.0
Caucasian	242	10.2	240	10.2	140	9.6	99.2	58.3
Portuguese	2	0.1	2	0.1	2	0.1	100.0	100.0
Other Caucasian	240	10.1	238	10.1	138	9.4	99.2	58.0
African American	49	2.1	49	2.1	25	1.7	100.0	51.0
American Indian / Alaskan Native	9	0.4	9	0.4	4	0.3	100.0	44.4
Mixed Ethnic Background	283	11.9	278	11.8	185	12.6	98.2	66.5
No Response	71	3.0	71	3.0	40	2.7	100.0	56.3

Note: Total applications processed does not include records where no decision was made.

1/ Enrolled data taken from the IRO_Admissions file may not tie exactly to data shown in the MAPS enrollment reports, which come from the IRO_Base file.

2/ Includes U.S. Military overseas.

3/ Includes U.S. Possessions, Commonwealths and republics within the Compact of Free Association.

4/ Revised Institutional Exempt code assigned to students from the Pacific Islands who come from nations where there are no four-year institutions of higher education, effective Fall 2007. Students are charged 150% of resident tuition.

Source: Banner Operational Data Store (ODS) IRO_ADMISSIONS.

TABLE 2C
 SELECTED CHARACTERISTICS
 TOTAL APPLICANTS
 KAPI'OLANI COMMUNITY COLLEGE
 FALL 2007

CHARACTERISTICS	APPLIED		ACCEPTED		ENROLLED 1/		ACCEPTANCE RATE	YIELD RATE
	No.	V%	No.	V%	No.	V%		
TOTAL	4,032	100.0	3,753	100.0	2,443	100.0	93.1	65.1
GENDER:								
Men	1,672	41.5	1,592	42.4	1,082	44.3	95.2	68.0
Women	2,351	58.3	2,153	57.4	1,357	55.5	91.6	63.0
No Data	9	0.2	8	0.2	4	0.2	88.9	50.0
PERMANENT ADDRESS:								
Hawai'i	3,628	90.0	3,373	89.9	2,207	90.3	93.0	65.4
Other than Hawai'i	364	9.0	342	9.1	210	8.6	94.0	61.4
U.S. Mainland 2/	167	4.1	153	4.1	62	2.5	91.6	40.5
U.S. Related Areas 3/	46	1.1	38	1.0	23	0.9	82.6	60.5
Foreign	151	3.7	151	4.0	125	5.1	100.0	82.8
No Data	40	1.0	38	1.0	26	1.1	95.0	68.4
TUITION STATUS:								
Resident Subtotal	3,261	80.9	3,134	83.5	2,082	85.2	96.1	66.4
Resident	3,260	80.9	3,133	83.5	2,081	85.2	96.1	66.4
Resident Converted	1	<0.1	1	<0.1	1	<0.1	100.0	100.0
Non-Resident Subtotal	771	19.1	619	16.5	361	14.8	80.3	58.3
Non Exempted	593	14.7	445	11.9	271	11.1	75.0	60.9
Revised Institutional Exemption 4/	55	1.4	54	1.4	30	1.2	98.2	55.6
Exempted	123	3.1	120	3.2	60	2.5	97.6	50.0
Ethnic Hawaiian	20	0.5	19	0.5	9	0.4	95.0	47.4
Faculty / Staff	6	0.1	6	0.2	3	0.1	100.0	50.0
Hawai'i National Guard 5/	5	0.1	5	0.1	4	0.2	100.0	80.0
Military	92	2.3	90	2.4	44	1.8	97.8	48.9
AGE:								
Mean Age	23.8		23.7		23.1			
Under 18	435	10.8	414	11.0	289	11.8	95.2	69.8
18-19	1,359	33.7	1,280	34.1	891	36.5	94.2	69.6
20-21	467	11.6	441	11.8	282	11.5	94.4	63.9
22-24	504	12.5	476	12.7	311	12.7	94.4	65.3
25-29	549	13.6	508	13.5	310	12.7	92.5	61.0
30-34	267	6.6	233	6.2	137	5.6	87.3	58.8
35-59	432	10.7	385	10.3	216	8.8	89.1	56.1
60 and over	17	0.4	16	0.4	7	0.3	94.1	43.8
No Data	2	<0.1						
ETHNICITY:								
Asian / Pacific Islander	2,745	68.1	2,562	68.3	1,733	70.9	93.3	67.6
Asian	1,868	46.3	1,772	47.2	1,266	51.8	94.9	71.4
Chinese	269	6.7	260	6.9	203	8.3	96.7	78.1
Filipino	557	13.8	507	13.5	320	13.1	91.0	63.1
Indian Subcontinent	4	0.1	4	0.1	3	0.1	100.0	75.0
Japanese	506	12.5	495	13.2	377	15.4	97.8	76.2
Korean	163	4.0	157	4.2	122	5.0	96.3	77.7
Laotian	16	0.4	13	0.3	10	0.4	81.3	76.9
Thai	5	0.1	5	0.1	4	0.2	100.0	80.0
Vietnamese	49	1.2	47	1.3	32	1.3	95.9	68.1
Other Asian	19	0.5	16	0.4	9	0.4	84.2	56.3
Mixed Asian	280	6.9	268	7.1	186	7.6	95.7	69.4

TABLE 2C (cont.)

CHARACTERISTICS	APPLIED		ACCEPTED		ENROLLED 1/		ACCEPTANCE RATE	YIELD RATE
	No.	V%	No.	V%	No.	V%		
Hawaiian / Pacific Islander	877	21.8	790	21.0	467	19.1	90.1	59.1
Guamanian or Chamorro	22	0.5	22	0.6	17	0.7	100.0	77.3
Hawaiian / Part-Hawaiian	684	17.0	623	16.6	364	14.9	91.1	58.4
Micronesia	48	1.2	39	1.0	19	0.8	81.3	48.7
Samoan	46	1.1	37	1.0	24	1.0	80.4	64.9
Tongan	16	0.4	14	0.4	10	0.4	87.5	71.4
Other Pacific Islander	21	0.5	18	0.5	9	0.4	85.7	50.0
Mixed Pacific Islander	40	1.0	37	1.0	24	1.0	92.5	64.9
Hispanic	98	2.4	85	2.3	43	1.8	86.7	50.6
Puerto Rican	2		2	0.1	2	0.1	100.0	100.0
Other Hispanic	91	2.3	80	2.1	39	1.6	87.9	48.8
Mixed Hispanic	5	0.1	3	0.1	2	0.1	60.0	66.7
Caucasian	598	14.8	553	14.7	315	12.9	92.5	57.0
Portuguese	8	0.2	8	0.2	3	0.1	100.0	37.5
Middle Easterner	1	<0.1						
Other Caucasian	589	14.6	545	14.5	312	12.8	92.5	57.2
African American	50	1.2	44	1.2	23	0.9	88.0	52.3
American Indian / Alaskan Native	16	0.4	16	0.4	9	0.4	100.0	56.3
Mixed Ethnic Background	463	11.5	440	11.7	287	11.7	95.0	65.2
No Response	62	1.5	53	1.4	33	1.4	85.5	62.3

Note: Total applications processed does not include records where no decision was made.

1/ Enrolled data taken from the IRO_Admissions file may not tie exactly to data shown in the MAPS enrollment reports, which come from the IRO_Base file.

2/ Includes U.S. Military overseas.

3/ Includes U.S. Possessions, Commonwealths and republics within the Compact of Free Association.

4/ Revised Institutional Exempt code assigned to students from the Pacific Islands who come from nations where there are no four-year institutions of higher education, effective Fall 2007. Students are charged 150% of resident tuition.

5/ New residency code for Hawai'i National Guard reservists, effective Spring 2007; students pay resident tuition.

Source: Banner Operational Data Store (ODS) IRO_ADMISSIONS.

TABLE 2D
 SELECTED CHARACTERISTICS
 TOTAL APPLICANTS
 KAUA'I COMMUNITY COLLEGE
 FALL 2007

CHARACTERISTICS	APPLIED		ACCEPTED		ENROLLED 1/		ACCEPTANCE RATE	YIELD RATE
	No.	V%	No.	V%	No.	V%		
TOTAL	708	100.0	708	100.0	496	100.0	100.0	70.1
GENDER:								
Men	276	39.0	276	39.0	201	40.5	100.0	72.8
Women	432	61.0	432	61.0	295	59.5	100.0	68.3
PERMANENT ADDRESS:								
Hawai'i	674	95.2	674	95.2	475	95.8	100.0	70.5
Other than Hawai'i	14	2.0	14	2.0	8	1.6	100.0	57.1
U.S. Mainland 2/	13	1.8	13	1.8	7	1.4	100.0	53.8
Foreign	1	0.1	1	0.1	1	0.2	100.0	100.0
No Data	20	2.8	20	2.8	13	2.6	100.0	65.0
TUITION STATUS:								
Resident Subtotal	660	93.2	660	93.2	467	94.2	100.0	70.8
Resident	658	92.9	658	92.9	466	94.0	100.0	70.8
Resident Converted	2	0.3	2	0.3	1	0.2	100.0	50.0
Non-Resident Subtotal	48	6.8	48	6.8	29	5.8	100.0	60.4
Non Exempted	37	5.2	37	5.2	19	3.8	100.0	51.4
Revised Institutional Exemption 3/	3	0.4	3	0.4	2	0.4	100.0	66.7
Exempted	8	1.1	8	1.1	8	1.6	100.0	100.0
Ethnic Hawaiian	4	0.6	4	0.6	4	0.8	100.0	100.0
Military	4	0.6	4	0.6	4	0.8	100.0	100.0
AGE:								
Mean Age	25.4		25.4		24.7			
Under 18	114	16.1	114	16.1	95	19.2	100.0	83.3
18-19	210	29.7	210	29.7	157	31.7	100.0	74.8
20-21	55	7.8	55	7.8	36	7.3	100.0	65.5
22-24	81	11.4	81	11.4	52	10.5	100.0	64.2
25-29	85	12.0	85	12.0	54	10.9	100.0	63.5
30-34	46	6.5	46	6.5	25	5.0	100.0	54.3
35-59	105	14.8	105	14.8	73	14.7	100.0	69.5
60 and over	12	1.7	12	1.7	4	0.8	100.0	33.3
ETHNICITY:								
Asian / Pacific Islander	401	56.6	401	56.6	280	56.5	100.0	69.8
Asian	223	31.5	223	31.5	168	33.9	100.0	75.3
Chinese	5	0.7	5	0.7	3	0.6	100.0	60.0
Filipino	132	18.6	132	18.6	102	20.6	100.0	77.3
Japanese	45	6.4	45	6.4	33	6.7	100.0	73.3
Korean	2	0.3	2	0.3	1	0.2	100.0	50.0
Thai	5	0.7	5	0.7	5	1.0	100.0	100.0
Vietnamese	2	0.3	2	0.3	2	0.4	100.0	100.0
Other Asian	1	0.1	1	0.1			100.0	
Mixed Asian	31	4.4	31	4.4	22	4.4	100.0	71.0
Hawaiian / Pacific Islander	178	25.1	178	25.1	112	22.6	100.0	62.9
Hawaiian / Part-Hawaiian	163	23.0	163	23.0	101	20.4	100.0	62.0
Micronesian	3	0.4	3	0.4	2	0.4	100.0	66.7
Tongan	2	0.3	2	0.3	2	0.4	100.0	100.0
Other Pacific Islander	3	0.4	3	0.4	1	0.2	100.0	33.3
Mixed Pacific Islander	7	1.0	7	1.0	6	1.2	100.0	85.7

TABLE 2D (cont.)

CHARACTERISTICS	APPLIED		ACCEPTED		ENROLLED 1/		ACCEPTANCE RATE	YIELD RATE
	No.	V%	No.	V%	No.	V%		
Hispanic	19	2.7	19	2.7	10	2.0	100.0	52.6
Puerto Rican	1	0.1	1	0.1	1	0.2	100.0	100.0
Other Hispanic	15	2.1	15	2.1	7	1.4	100.0	46.7
Mixed Hispanic	3	0.4	3	0.4	2	0.3	100.0	66.7
Caucasian	182	25.7	182	25.7	128	25.8	100.0	70.3
Portuguese	2	0.3	2	0.3	1	0.2	100.0	50.0
Other Caucasian	180	25.4	180	25.4	127	25.6	100.0	70.6
African American	4	0.6	4	0.6	3	0.6	100.0	75.0
American Indian / Alaskan Native	1	0.1	1	0.1	1	0.2	100.0	100.0
Mixed Ethnic Background	98	13.8	98	13.8	72	14.5	100.0	73.5
No Response	3	0.4	3	0.4	2	0.4	100.0	66.7

Note: Total applications processed does not include records where no decision was made.

1/ Enrolled data taken from the IRO_Admissions file may not tie exactly to data shown in the MAPS enrollment reports, which come from the IRO_Base file.

2/ Includes U.S. Military overseas.

3/ Revised Institutional Exempt code assigned to students from the Pacific Islands who come from nations where there are no four-year institutions of higher education, effective Fall 2007. Students are charged 150% of resident tuition.

Source: Banner Operational Data Store (ODS) IRO_ADMISSIONS.

TABLE 2E
 SELECTED CHARACTERISTICS
 TOTAL APPLICANTS
 LEEWARD COMMUNITY COLLEGE
 FALL 2007

CHARACTERISTICS	APPLIED		ACCEPTED		ENROLLED 1/		ACCEPTANCE RATE	YIELD RATE
	No.	V%	No.	V%	No.	V%		
TOTAL	3,424	100.0	3,264	100.0	2,197	100.0	95.3	67.3
GENDER:								
Men	1,359	39.7	1,314	40.3	910	41.4	96.7	69.3
Women	2,060	60.2	1,945	59.6	1,284	58.4	94.4	66.0
No Data	5	0.1	5	0.2	3	0.1	100.0	60.0
PERMANENT ADDRESS:								
Hawai'i	3,333	97.3	3,186	97.6	2,149	97.8	95.6	67.5
Other than Hawai'i	57	1.7	45	1.4	23	1.0	78.9	51.1
U.S. Mainland 2/	41	1.2	33	1.0	18	0.8	80.5	54.5
U.S. Related Areas 3/	10	0.3	6	0.2	2	0.1	60.0	33.3
Foreign	6	0.2	6	0.2	3	0.1	100.0	50.0
No Data	34	1.0	33	1.0	25	1.1	97.1	75.8
TUITION STATUS:								
Resident Subtotal	2,963	86.5	2,933	89.9	1,977	90.0	99.0	67.4
Resident	2,962	86.5	2,932	89.8	1,976	89.9	99.0	67.4
Resident Converted	1	<0.1	1	<0.1	1	<0.1	100.0	100.0
Non-Resident Subtotal	461	13.5	331	10.1	220	10.0	71.8	66.5
Non Exempted	246	7.2	118	3.6	66	3.0	48.0	55.9
Revised Institutional Exemption 4/	12	0.4	12	0.4	7	0.3	100.0	58.3
Exempted	203	5.9	201	6.2	147	6.7	99.0	73.1
Ethnic Hawaiian	16	0.5	16	0.5	11	0.5	100.0	68.8
Hawai'i National Guard 5/	3	0.1	3	0.1	2	0.1	100.0	66.7
Institutional	2	0.1	2	0.1	1	<0.1	100.0	50.0
Military	182	5.3	180	5.5	133	6.1	98.9	73.9
AGE:								
Mean Age	23.1		23.2		22.6			
Under 18	471	13.8	423	13.0	304	13.8	89.8	71.9
18-19	1,324	38.7	1,271	38.9	895	40.7	96.0	70.4
20-21	381	11.1	366	11.2	265	12.1	96.1	72.4
22-24	352	10.3	341	10.4	216	9.8	96.9	63.3
25-29	335	9.8	323	9.9	199	9.1	96.4	61.6
30-34	189	5.5	180	5.5	100	4.6	95.2	55.6
35-59	356	10.4	345	10.6	211	9.6	96.9	61.2
60 and over	15	0.4	15	0.5	7	0.3	100.0	46.7
No Data	1	<0.1						
ETHNICITY:								
Asian / Pacific Islander	2,266	66.2	2,159	66.1	1,462	66.5	95.3	67.7
Asian	1,294	37.8	1,243	38.1	897	40.8	96.1	72.2
Chinese	32	0.9	32	1.0	26	1.2	100.0	81.3
Filipino	710	20.7	679	20.8	475	21.6	95.6	70.0
Japanese	254	7.4	247	7.6	190	8.6	97.2	76.9
Korean	32	0.9	32	1.0	26	1.2	100.0	81.3
Laotian	9	0.3	7	0.2	6	0.3	77.8	85.7
Thai	5	0.1	5	0.2	4	0.2	100.0	80.0
Vietnamese	11	0.3	10	0.3	8	0.4	90.9	80.0
Other Asian	9	0.3	9	0.3	3	0.1	100.0	33.3
Mixed Asian	232	6.8	222	6.8	159	7.2	95.7	71.6

TABLE 2E (cont.)

CHARACTERISTICS	APPLIED		ACCEPTED		ENROLLED 1/		ACCEPTANCE RATE	YIELD RATE
	No.	V%	No.	V%	No.	V%		
Hawaiian / Pacific Islander	972	28.4	916	28.1	565	25.7	94.2	61.7
Guamanian or Chamorro	16	0.5	12	0.4	8	0.4	75.0	66.7
Hawaiian / Part-Hawaiian	802	23.4	765	23.4	479	21.8	95.4	62.6
Micronesia	20	0.6	16	0.5	8	0.4	80.0	50.0
Samoa	70	2.0	63	1.9	37	1.7	90.0	58.7
Tongan	11	0.3	10	0.3	6	0.3	90.9	60.0
Other Pacific Islander	12	0.4	10	0.3	7	0.3	83.3	70.0
Mixed Pacific Islander	41	1.2	40	1.2	20	0.9	97.6	50.0
Hispanic	97	2.8	93	2.8	62	2.8	95.9	66.7
Puerto Rican	4	0.1	4	0.1	4	0.2	100.0	100.0
Other Hispanic	90	2.6	86	2.6	55	2.5	95.6	64.0
Mixed Hispanic	3	0.1	3	0.1	3	0.1	100.0	100.0
Caucasian	326	9.5	308	9.4	213	9.7	94.5	69.2
Portuguese	1	<0.1	1	<0.1			100.0	
Other Caucasian	325	9.5	307	9.4	213	9.7	94.5	69.4
African American	82	2.4	77	2.4	48	2.2	93.9	62.3
American Indian / Alaskan Native	10	0.3	9	0.3	8	0.4	90.0	88.9
Mixed Ethnic Background	526	15.4	503	15.4	335	15.2	95.6	66.6
No Response	117	3.4	115	3.5	69	3.1	98.3	60.0

Note: Total applications processed does not include records where no decision was made.

- 1/ Enrolled data taken from the IRO_Admissions file may not tie exactly to data shown in the MAPS enrollment reports, which come from the IRO_Base file.
- 2/ Includes U.S. Military overseas.
- 3/ Includes U.S. Possessions, Commonwealths and republics within the Compact of Free Association.
- 4/ Revised Institutional Exempt code assigned to students from the Pacific Islands who come from nations where there are no four-year institutions of higher education, effective Fall 2007. Students are charged 150% of resident tuition.
- 5/ New residency code for Hawai'i National Guard reservists, effective Spring 2007; students pay resident tuition.

Source: Banner Operational Data Store (ODS) IRO_ADMISSIONS.

TABLE 2F
 SELECTED CHARACTERISTICS
 TOTAL APPLICANTS
 MAUI COMMUNITY COLLEGE
 FALL 2007

CHARACTERISTICS	APPLIED		ACCEPTED		ENROLLED 1/		ACCEPTANCE RATE	YIELD RATE
	No.	V%	No.	V%	No.	V%		
TOTAL	2,028	100.0	2,028	100.0	1,344	100.0	100.0	66.3
GENDER:								
Men	791	39.0	791	39.0	531	39.5	100.0	67.1
Women	1,234	60.8	1,234	60.8	813	60.5	100.0	65.9
No Data	3	0.1	3	0.1			100.0	
PERMANENT ADDRESS:								
Hawai'i	1,808	89.2	1,808	89.2	1,236	92.0	100.0	68.4
Other than Hawai'i	113	5.6	113	5.6	48	3.6	100.0	42.5
U.S. Mainland 2/	95	4.7	95	4.7	40	3.0	100.0	42.1
U.S. Related Areas 3/	5	0.2	5	0.2	3	0.2	100.0	60.0
Foreign	13	0.6	13	0.6	5	0.4	100.0	38.5
No Data	107	5.3	107	5.3	60	4.5	100.0	56.1
TUITION STATUS:								
Resident Subtotal	1,567	77.3	1,567	77.3	1,097	81.6	100.0	70.0
Resident	1,567	77.3	1,567	77.3	1,097	81.6	100.0	70.0
Non-Resident Subtotal	461	22.7	461	22.7	247	18.4	100.0	53.6
Non Exempted	436	21.5	436	21.5	227	16.9	100.0	52.1
Revised Institutional Exemption 4/	17	0.8	17	0.8	12	0.9	100.0	70.6
Exempted	8	0.4	8	0.4	8	0.6	100.0	100.0
Ethnic Hawaiian	8	0.4	8	0.4	8	0.6	100.0	100.0
AGE:								
Mean Age	26.7		26.7		26.2			
Under 18	275	13.6	275	13.6	226	16.8	100.0	82.2
18-19	527	26.0	527	26.0	365	27.2	100.0	69.3
20-21	216	10.7	216	10.7	128	9.5	100.0	59.3
22-24	199	9.8	199	9.8	128	9.5	100.0	64.3
25-29	255	12.6	255	12.6	151	11.2	100.0	59.2
30-34	131	6.5	131	6.5	85	6.3	100.0	64.9
35-59	374	18.4	374	18.4	222	16.5	100.0	59.4
60 and over	48	2.4	48	2.4	36	2.7	100.0	75.0
No Data 5/	3	0.1	3	0.1	3	0.2	100.0	100.0
ETHNICITY:								
Asian / Pacific Islander	1,137	56.1	1,137	56.1	775	57.7	100.0	68.2
Asian	531	26.2	531	26.2	370	27.5	100.0	69.7
Chinese	6	0.3	6	0.3	2	0.1	100.0	33.3
Filipino	338	16.7	338	16.7	239	17.8	100.0	70.7
Indian Subcontinent	1	<0.1	1	<0.1	1	0.1	100.0	100.0
Japanese	102	5.0	102	5.0	71	5.3	100.0	69.6
Korean	11	0.5	11	0.5	5	0.4	100.0	45.5
Thai	1	<0.1	1	<0.1	1	0.1	100.0	100.0
Vietnamese	4	0.2	4	0.2	2	0.1	100.0	50.0
Other Asian	2	0.1	2	0.1	2	0.1	100.0	100.0
Mixed Asian	66	3.3	66	3.3	47	3.5	100.0	71.2

TABLE 2F (cont.)

CHARACTERISTICS	APPLIED		ACCEPTED		ENROLLED 1/		ACCEPTANCE RATE	YIELD RATE
	No.	V%	No.	V%	No.	V%		
Hawaiian / Pacific Islander	606	29.9	606	29.9	405	30.1	100.0	66.8
Guamanian or Chamorro	1	<0.1	1	<0.1			100.0	
Hawaiian / Part-Hawaiian	562	27.7	562	27.7	382	28.4	100.0	68.0
Micronesia	15	0.7	15	0.7	11	0.8	100.0	73.3
Samoa	6	0.3	6	0.3	3	0.2	100.0	50.0
Tongan	5	0.2	5	0.2	2	0.1	100.0	40.0
Other Pacific Islander	8	0.4	8	0.4	4	0.3	100.0	50.0
Mixed Pacific Islander	9	0.4	9	0.4	3	0.2	100.0	33.3
Hispanic	60	3.0	60	3.0	42	3.1	100.0	70.0
Puerto Rican	4	0.2	4	0.2	2	0.1	100.0	50.0
Other Hispanic	51	2.5	51	2.5	35	2.6	100.0	68.6
Mixed Hispanic	5	0.2	5	0.2	5	0.4	100.0	100.0
Caucasian	629	31.0	629	31.0	388	28.9	100.0	61.7
Portuguese	14	0.7	14	0.7	11	0.8	100.0	78.6
Other Caucasian	615	30.3	615	30.3	377	28.1	100.0	61.3
African American	11	0.5	11	0.5	7	0.5	100.0	63.6
American Indian / Alaskan Native	12	0.6	12	0.6	6	0.4	100.0	50.0
Mixed Ethnic Background	172	8.5	172	8.5	125	9.3	100.0	72.7
No Response	7	0.3	7	0.3	1	0.1	100.0	14.3

Note: Total applications processed does not include records where no decision was made.

1/ Enrolled data taken from the IRO_Admissions file may not tie exactly to data shown in the MAPS enrollment reports, which come from the IRO_Base file.

2/ Includes U.S. Military overseas.

3/ Includes U.S. Possessions, Commonwealths and republics within the Compact of Free Association.

4/ Revised Institutional Exempt code assigned to students from the Pacific Islands who come from nations where there are no four-year institutions of higher education, effective Fall 2007. Students are charged 150% of resident tuition.

5/ Includes records with age less than 14.

Source: Banner Operational Data Store (ODS) IRO_ADMISSIONS.

TABLE 2G
 SELECTED CHARACTERISTICS
 TOTAL APPLICANTS
 WINDWARD COMMUNITY COLLEGE
 FALL 2007

CHARACTERISTICS	APPLIED		ACCEPTED		ENROLLED 1/		ACCEPTANCE RATE	YIELD RATE
	No.	V%	No.	V%	No.	V%		
TOTAL	1,079	100.0	1,079	100.0	817	100.0	100.0	75.7
GENDER:								
Men	403	37.3	403	37.3	309	37.8	100.0	76.7
Women	674	62.5	674	62.5	507	62.1	100.0	75.2
No Data	2	0.2	2	0.2	1	0.1	100.0	50.0
PERMANENT ADDRESS:								
Hawai'i	1,055	97.8	1,055	97.8	799	97.8	100.0	75.7
Other than Hawai'i	15	1.4	15	1.4	11	1.3	100.0	73.3
U.S. Mainland 2/	14	1.3	14	1.3	10	1.2	100.0	71.4
U.S. Related Areas 3/	1	0.1	1	0.1	1	0.1	100.0	100.0
No Data	9	0.8	9	0.8	7	0.9	100.0	77.8
TUITION STATUS:								
Resident Subtotal	953	88.3	953	88.3	722	88.4	100.0	75.8
Resident	953	88.3	953	88.3	722	88.4	100.0	75.8
Non-Resident Subtotal	126	11.7	126	11.7	95	11.6	100.0	75.4
Non Exempted	51	4.7	51	4.7	40	4.9	100.0	78.4
Exempted	75	7.0	75	7.0	55	6.7	100.0	73.3
Ethnic Hawaiian	11	1.0	11	1.0	7	0.9	100.0	63.6
Faculty / Staff	2	0.2	2	0.2	1	0.1	100.0	50.0
Hawai'i National Guard 4/	3	0.3	3	0.3	3	0.4	100.0	100.0
Institutional	1	0.1	1	0.1	1	0.1	100.0	100.0
Military	58	5.4	58	5.4	43	5.3	100.0	74.1
AGE:								
Mean Age	25.2		25.2		24.7			
Under 18	99	9.2	99	9.2	87	10.6	100.0	87.9
18-19	344	31.9	344	31.9	283	34.6	100.0	82.3
20-21	138	12.8	138	12.8	91	11.1	100.0	65.9
22-24	136	12.6	136	12.6	103	12.6	100.0	75.7
25-29	130	12.0	130	12.0	89	10.9	100.0	68.5
30-34	63	5.8	63	5.8	47	5.8	100.0	74.6
35-59	151	14.0	151	14.0	102	12.5	100.0	67.5
60 and over	18	1.7	18	1.7	15	1.8	100.0	83.3
ETHNICITY:								
Asian / Pacific Islander	634	58.8	634	58.8	471	57.6	100.0	74.3
Asian	196	18.2	196	18.2	147	18.0	100.0	75.0
Chinese	17	1.6	17	1.6	14	1.7	100.0	82.4
Filipino	46	4.3	46	4.3	29	3.5	100.0	63.0
Indian Subcontinent	1	0.1	1	0.1	1	0.1	100.0	100.0
Japanese	70	6.5	70	6.5	55	6.7	100.0	78.6
Korean	8	0.7	8	0.7	4	0.5	100.0	50.0
Laotian	1	0.1	1	0.1	1	0.1	100.0	100.0
Vietnamese	2	0.2	2	0.2	2	0.2	100.0	100.0
Other Asian	1	0.1	1	0.1	1	0.1	100.0	100.0
Mixed Asian	50	4.6	50	4.6	40	4.9	100.0	80.0

TABLE 2G (cont.)

CHARACTERISTICS	APPLIED		ACCEPTED		ENROLLED 1/		ACCEPTANCE RATE	YIELD RATE
	No.	V%	No.	V%	No.	V%		
Hawaiian / Pacific Islander	438	40.6	438	40.6	324	39.7	100.0	74.0
Guamanian or Chamorro	2	0.2	2	0.2	1	0.1	100.0	50.0
Hawaiian / Part-Hawaiian	380	35.2	380	35.2	281	34.4	100.0	73.9
Micronesian	4	0.4	4	0.4	4	0.5	100.0	100.0
Samoan	21	1.9	21	1.9	14	1.7	100.0	66.7
Tongan	8	0.7	8	0.7	7	0.9	100.0	87.5
Other Pacific Islander	7	0.6	7	0.6	5	0.6	100.0	71.4
Mixed Pacific Islander	16	1.5	16	1.5	12	1.5	100.0	75.0
Hispanic	32	3.0	32	3.0	24	2.9	100.0	75.0
Other Hispanic	32	3.0	32	3.0	24	2.9	100.0	75.0
Caucasian	231	21.4	231	21.4	190	23.3	100.0	82.3
Portuguese	1	0.1	1	0.1	1	0.1	100.0	100.0
Other Caucasian	230	21.3	230	21.3	189	23.1	100.0	82.2
African American	9	0.8	9	0.8	7	0.9	100.0	77.8
American Indian / Alaskan Native	2	0.2	2	0.2	1	0.1	100.0	50.0
Mixed Ethnic Background	147	13.6	147	13.6	108	13.2	100.0	73.5
No Response	24	2.2	24	2.2	16	2.0	100.0	66.7

Note: Total applications processed does not include records where no decision was made.

1/ Enrolled data taken from the IRO_Admissions file may not tie exactly to data shown in the MAPS enrollment reports, which come from the IRO_Base file.

2/ Includes U.S. Military overseas.

3/ Includes U.S. Possessions, Commonwealths and republics within the Compact of Free Association.

4/ New residency code for Hawai'i National Guard reservists, effective Spring 2007; students pay resident tuition.

Source: Banner Operational Data Store (ODS) IRO_ADMISSIONS.

APPENDIX A
DISTRIBUTION OF APPLICATIONS PROCESSED
BY GEOGRAPHIC LOCATION (PERMANENT ADDRESS)
UNIVERSITY OF HAWAI'I, COMMUNITY COLLEGES
FALL 2007

ISLAND OR REGION OF APPLICANT	APPLIED	ACCEPTED	ENROLLED
TOTAL APPLICATIONS	15,691	15,220	9,942
Acceptance Rate; Yield Rate		97.0	65.3
HAWAI'I	14,683	14,254	9,398
Acceptance Rate; Yield Rate		97.1	65.9
O'ahu	9,940	9,544	6,394
East Honolulu	415	405	280
Honolulu	3,437	3,317	2,228
Leeward	4,556	4,317	2,819
Windward	1,532	1,505	1,067
Hawai'i	2,053	2,035	1,172
Kaua'i	762	754	520
Maui County	1,925	1,918	1,310
Lana'i	48	45	30
Maui	1,690	1,687	1,136
Molokai	187	186	144
Other Hawai'i	3	3	2
OTHER UNITED STATES	440	416	177
Acceptance Rate; Yield Rate		94.5	42.5
Central	26	26	11
Mountain West	50	49	19
Northeast	75	68	28
Northwest	74	73	25
South	79	70	28
West	133	127	65
Military (AE, AP)	3	3	1
US RELATED AREAS	85	73	41
Acceptance Rate; Yield Rate		85.9	56.2
Possessions	20	16	12
American Samoa	9	7	5
Guam	11	9	7
Commonwealth	22	19	13
Northern Marianas	21	18	13
Puerto Rico	1	1	

APPENDIX A (cont.)

ISLAND OR REGION OF APPLICANT	APPLIED	ACCEPTED	ENROLLED
Compact of Free Association	43	38	16
Marshall Islands	6	4	3
Micronesia, Federated States	33	30	12
Palau, Republic of	4	4	1
FOREIGN COUNTRIES	203	200	157
Acceptance Rate; Yield Rate		98.5	78.5
Africa	2	2	
Australia / New Zealand	3	3	1
Central America	1	1	
East Asia	165	163	136
Eastern Europe	5	5	3
Middle East	1	1	1
North America	8	8	6
Oceania	6	5	4
South America	1	1	
Southeast Asia	7	7	4
Western Europe	4	4	2
No Data	280	277	169

Source: Banner Operational Data Store (ODS) IRO_ADMISSIONS

APPENDIX A1
DISTRIBUTION OF APPLICATIONS PROCESSED
BY GEOGRAPHIC LOCATION (PERMANENT ADDRESS)
HAWAI'I COMMUNITY COLLEGE
FALL 2007

GEOGRAPHIC ORIGIN OF APPLICANT	APPLIED	ACCEPTED	ENROLLED
TOTAL APPLICATIONS	2,050	2,039	1,182
Acceptance Rate; Yield Rate		99.5	58.0
HAWAI'I	1,960	1,951	1,137
Acceptance Rate; Yield Rate		99.5	58.3
O'ahu	51	49	32
East Honolulu	2	2	2
Honolulu	14	14	8
Leeward	30	28	20
Windward	5	5	2
Hawai'i	1,881	1,876	1,092
Kaua'i	8	7	3
Maui County	19	18	9
Maui	12	12	7
Molokai	7	6	2
Other Hawai'i	1	1	1
OTHER UNITED STATES	47	46	19
Acceptance Rate; Yield Rate		97.9	41.3
Central	3	3	2
Mountain West	7	7	3
Northeast	5	5	2
Northwest	13	13	5
South	4	4	
West	15	14	7
US RELATED AREAS	4	4	2
Acceptance Rate; Yield Rate		100.0	50.0
Commonwealth	2	2	1
Northern Marianas	1	1	1
Puerto Rico	1	1	
Compact of Free Association	2	2	1
Marshall Islands	1	1	1
Micronesia, Federated States	1	1	

APPENDIX A1 (cont.)

GEOGRAPHIC ORIGIN OF APPLICANT	APPLIED	ACCEPTED	ENROLLED
FOREIGN COUNTRIES	14	13	11
Acceptance Rate; Yield Rate		92.9	84.6
East Asia	13	12	10
Western Europe	1	1	1
No Data	25	25	13

Source: Banner Operational Data Store (ODS) IRO_ADMISSIONS

APPENDIX A2
DISTRIBUTION OF APPLICATIONS PROCESSED
BY GEOGRAPHIC LOCATION (PERMANENT ADDRESS)
HONOLULU COMMUNITY COLLEGE
FALL 2007

GEOGRAPHIC ORIGIN OF APPLICANT	APPLIED	ACCEPTED	ENROLLED
TOTAL APPLICATIONS	2,370	2,349	1,463
Acceptance Rate; Yield Rate		99.1	62.3
HAWAI'I	2,225	2,207	1,395
Acceptance Rate; Yield Rate		99.2	63.2
O'ahu	2,134	2,119	1,350
East Honolulu	69	69	45
Honolulu	1,095	1,085	693
Leeward	738	734	469
Windward	232	231	143
Hawai'i	36	34	15
Kaua'i	14	13	9
Maui County	40	40	21
Lana'i	7	7	5
Maui	28	28	14
Molokai	5	5	2
Other Hawai'i	1	1	
OTHER UNITED STATES	63	62	21
Acceptance Rate; Yield Rate		98.4	33.9
Central	4	4	2
Mountain West	10	10	3
Northeast	6	6	3
Northwest	7	6	
South	12	12	4
West	24	24	9
US RELATED AREAS	19	19	10
Acceptance Rate; Yield Rate		100.0	52.6
Possessions	5	5	3
American Samoa	1	1	
Guam	4	4	3
Commonwealth	1	1	
Northern Marianas	1	1	
Compact of Free Association	13	13	7
Marshall Islands	1	1	
Micronesia, Federated States	12	12	7

APPENDIX A2 (cont.)

GEOGRAPHIC ORIGIN OF APPLICANT	APPLIED	ACCEPTED	ENROLLED
FOREIGN COUNTRIES	18	16	12
Acceptance Rate; Yield Rate		88.9	75.0
East Asia	12	11	9
Eastern Europe	1	1	1
Oceania	3	2	1
South America	1	1	
Western Europe	1	1	1
No Data	45	45	25

Source: Banner Operational Data Store (ODS) IRO_ADMISSIONS

APPENDIX A3
DISTRIBUTION OF APPLICATIONS PROCESSED
BY GEOGRAPHIC LOCATION (PERMANENT ADDRESS)
KAPI'OLANI COMMUNITY COLLEGE
FALL 2007

GEOGRAPHIC ORIGIN OF APPLICANT	APPLIED	ACCEPTED	ENROLLED
TOTAL APPLICATIONS	4,032	3,753	2,443
Acceptance Rate; Yield Rate		93.1	65.1
HAWAI'I	3,628	3,373	2,207
Acceptance Rate; Yield Rate		93.0	65.4
O'ahu	3,377	3,143	2,071
East Honolulu	330	320	223
Honolulu	1,984	1,886	1,299
Leeward	751	648	368
Windward	312	289	181
Hawai'i	102	91	51
Kaua'i	59	53	34
Maui County	90	86	51
Lana'i	12	11	5
Maui	68	65	39
Molokai	10	10	7
OTHER UNITED STATES	167	153	62
Acceptance Rate; Yield Rate		91.6	40.5
Central	8	8	3
Mountain West	19	19	8
Northeast	34	28	10
Northwest	21	21	7
South	30	25	9
West	55	52	25
US RELATED AREAS	46	38	23
Acceptance Rate; Yield Rate		82.6	60.5
Possessions	11	8	7
American Samoa	5	3	3
Guam	6	5	4
Commonwealth	17	16	12
Northern Marianas	17	16	12
Compact of Free Association	18	14	4
Marshall Islands	2	1	1
Micronesia, Federated States	14	11	2
Palau, Republic of	2	2	1

APPENDIX A3 (cont.)

GEOGRAPHIC ORIGIN OF APPLICANT	APPLIED	ACCEPTED	ENROLLED
FOREIGN COUNTRIES	151	151	125
Acceptance Rate; Yield Rate		100.0	82.8
Africa	2	2	
Australia / New Zealand	3	3	1
Central America	1	1	
East Asia	126	126	111
Eastern Europe	3	3	2
Middle East	1	1	1
North America	4	4	3
Oceania	3	3	3
Southeast Asia	6	6	4
Western Europe	2	2	
No Data	40	38	26

Source: Banner Operational Data Store (ODS) IRO_ADMISSIONS

APPENDIX A4
DISTRIBUTION OF APPLICATIONS PROCESSED
BY GEOGRAPHIC LOCATION (PERMANENT ADDRESS)
KAUA'I COMMUNITY COLLEGE
FALL 2007

GEOGRAPHIC ORIGIN OF APPLICANT	APPLIED	ACCEPTED	ENROLLED
TOTAL APPLICATIONS	708	708	496
Acceptance Rate; Yield Rate		100.0	70.1
HAWAI'I	674	674	475
Acceptance Rate; Yield Rate		100.0	70.5
O'ahu	10	10	8
Honolulu	3	3	3
Leeward	4	4	3
Windward	3	3	2
Hawai'i	2	2	1
Kaua'i	662	662	466
OTHER UNITED STATES	13	13	7
Acceptance Rate; Yield Rate		100.0	53.8
Central	1	1	
Mountain West	3	3	2
Northeast	4	4	3
South	2	2	
West	3	3	2
FOREIGN COUNTRIES	1	1	1
Acceptance Rate; Yield Rate		100.0	100.0
East Asia	1	1	1
No Data	20	20	13

Source: Banner Operational Data Store (ODS) IRO_ADMISSIONS

APPENDIX A5
DISTRIBUTION OF APPLICATIONS PROCESSED
BY GEOGRAPHIC LOCATION (PERMANENT ADDRESS)
LEEWARD COMMUNITY COLLEGE
FALL 2007

GEOGRAPHIC ORIGIN OF APPLICANT	APPLIED	ACCEPTED	ENROLLED
TOTAL APPLICATIONS	3,424	3,264	2,197
Acceptance Rate; Yield Rate		95.3	67.3
HAWAI'I	3,333	3,186	2,149
Acceptance Rate; Yield Rate		95.6	67.5
O'ahu	3,306	3,161	2,134
East Honolulu	6	6	5
Honolulu	280	268	185
Leeward	2,969	2,839	1,911
Windward	51	48	33
Hawai'i	7	7	2
Kaua'i	4	4	2
Maui County	16	14	11
Lana'i	4	2	2
Maui	10	10	8
Molokai	2	2	1
OTHER UNITED STATES	41	33	18
Acceptance Rate; Yield Rate		80.5	54.5
Central	2	2	
Mountain West	3	2	
Northeast	5	4	3
Northwest	5	5	3
South	11	7	5
West	12	10	6
Military (AE, AP)	3	3	1
US RELATED AREAS	10	6	2
Acceptance Rate; Yield Rate		60.0	33.3
Possessions	4	3	2
American Samoa	3	3	2
Guam	1		
Commonwealth	2		
Northern Marianas	2		
Compact of Free Association	4	3	
Marshall Islands	1		
Micronesia, Federated States	1	1	
Palau, Republic of	2	2	

APPENDIX A5 (cont.)

GEOGRAPHIC ORIGIN OF APPLICANT	APPLIED	ACCEPTED	ENROLLED
FOREIGN COUNTRIES	6	6	3
Acceptance Rate; Yield Rate		100.0	50.0
East Asia	4	4	3
Eastern Europe	1	1	
Southeast Asia	1	1	
No Data	34	33	25

Source: Banner Operational Data Store (ODS) IRO_ADMISSIONS

APPENDIX A6
DISTRIBUTION OF APPLICATIONS PROCESSED
BY GEOGRAPHIC LOCATION (PERMANENT ADDRESS)
MAUI COMMUNITY COLLEGE
FALL 2007

GEOGRAPHIC ORIGIN OF APPLICANT	APPLIED	ACCEPTED	ENROLLED
TOTAL APPLICATIONS	2,028	2,028	1,344
Acceptance Rate; Yield Rate		100.0	66.3
HAWAI'I	1,808	1,808	1,236
Acceptance Rate; Yield Rate		100.0	68.4
O'ahu	19	19	7
Honolulu	11	11	4
Leeward	6	6	2
Windward	2	2	1
Hawai'i	19	19	9
Kaua'i	13	13	5
Maui County	1,756	1,756	1,214
Lana'i	25	25	18
Maui	1,570	1,570	1,066
Molokai	161	161	130
Other Hawai'i	1	1	1
OTHER UNITED STATES	95	95	40
Acceptance Rate; Yield Rate		100.0	42.1
Central	8	8	4
Mountain West	7	7	2
Northeast	19	19	5
Northwest	26	26	9
South	17	17	9
West	18	18	11
US RELATED AREAS	5	5	3
Acceptance Rate; Yield Rate		100.0	60.0
Compact of Free Association	5	5	3
Micronesia, Federated States	5	5	3
FOREIGN COUNTRIES	13	13	5
Acceptance Rate; Yield Rate		100.0	38.5
East Asia	9	9	2
North America	4	4	3
No Data	107	107	60

Source: Banner Operational Data Store (ODS) IRO_ADMISSIONS

APPENDIX A7
DISTRIBUTION OF APPLICATIONS PROCESSED
BY GEOGRAPHIC LOCATION (PERMANENT ADDRESS)
WINDWARD COMMUNITY COLLEGE
FALL 2007

GEOGRAPHIC ORIGIN OF APPLICANT	APPLIED	ACCEPTED	ENROLLED
TOTAL APPLICATIONS	1,079	1,079	817
Acceptance Rate; Yield Rate		100.0	75.7
HAWAI'I	1,055	1,055	799
Acceptance Rate; Yield Rate		100.0	75.7
O'ahu	1,043	1,043	792
East Honolulu	8	8	5
Honolulu	50	50	36
Leeward	58	58	46
Windward	927	927	705
Hawai'i	6	6	2
Kaua'i	2	2	1
Maui County	4	4	4
Maui	2	2	2
Molokai	2	2	2
OTHER UNITED STATES	14	14	10
Acceptance Rate; Yield Rate		100.0	71.4
Mountain West	1	1	1
Northeast	2	2	2
Northwest	2	2	1
South	3	3	1
West	6	6	5
US RELATED AREAS	1	1	1
Acceptance Rate; Yield Rate		100.0	100.0
Compact of Free Association	1	1	1
Marshall Islands	1	1	1
No Data	9	9	7

Source: Banner Operational Data Store (ODS) IRO_ADMISSIONS