

COURSE REGISTRATION REPORT
UNIVERSITY OF HAWAI'I COMMUNITY COLLEGES
FALL 2006

Institutional Research Office
University of Hawai'i
September 2008

File Reference: Management and Planning Support Folder, Courses

Reports available online at: <http://www.hawaii.edu/iro/maps.htm>

COURSE REGISTRATION REPORT
UNIVERSITY OF HAWAI'I COMMUNITY COLLEGES

University of Hawai'i Community Colleges, Fall Semesters

Number of Courses
Number of Classes
Average Class Size
Student Semester Hours

University of Hawai'i Community Colleges:

Table 1 Course Registration Summary, By Program
Table 2 Course Registration Summary, By Campus
Table 3 Average Class Size, By Program and Campus
Table 4 Student Semester Hours (SSH) and Course FTE
Table 5 Number of Classes and Average Class Size

Hawai'i Community College, Fall Semesters

Number of Courses
Number of Classes
Average Class Size
Student Semester Hours

Hawai'i Community College:

Table 1 Course Registration Summary, By Course Offering
Table 2 Student Semester Hours (SSH) and Course FTE
Table 3 Number of Classes and Average Class Size

Honolulu Community College, Fall Semesters

Number of Courses
Number of Classes
Average Class Size
Student Semester Hours

Honolulu Community College:

Table 1 Course Registration Summary, By Course Offering
Table 2 Student Semester Hours (SSH) and Course FTE
Table 3 Number of Classes and Average Class Size

Kapi'olani Community College, Fall Semesters

Number of Courses
Number of Classes
Average Class Size
Student Semester Hours

Kapi'olani Community College:

Table 1 Course Registration Summary, By Course Offering
Table 2 Student Semester Hours (SSH) and Course FTE
Table 3 Number of Classes and Average Class Size

Kaua'i Community College, Fall Semesters

Number of Courses
Number of Classes
Average Class Size
Student Semester Hours

Kaua'i Community College:

Table 1 Course Registration Summary, By Course Offering
Table 2 Student Semester Hours (SSH) and Course FTE
Table 3 Number of Classes and Average Class Size

Leeward Community College, Fall Semesters

Number of Courses
Number of Classes
Average Class Size
Student Semester Hours

Leeward Community College:

Table 1 Course Registration Summary, By Course Offering
Table 2 Student Semester Hours (SSH) and Course FTE
Table 3 Number of Classes and Average Class Size

Maui Community College, Fall Semesters

Number of Courses
Number of Classes
Average Class Size
Student Semester Hours

Maui Community College:

Table 1 Course Registration Summary, By Course Offering
Table 2 Student Semester Hours (SSH) and Course FTE
Table 3 Number of Classes and Average Class Size

Windward Community College, Fall Semesters

Number of Courses

Number of Classes

Average Class Size

Student Semester Hours

Windward Community College:

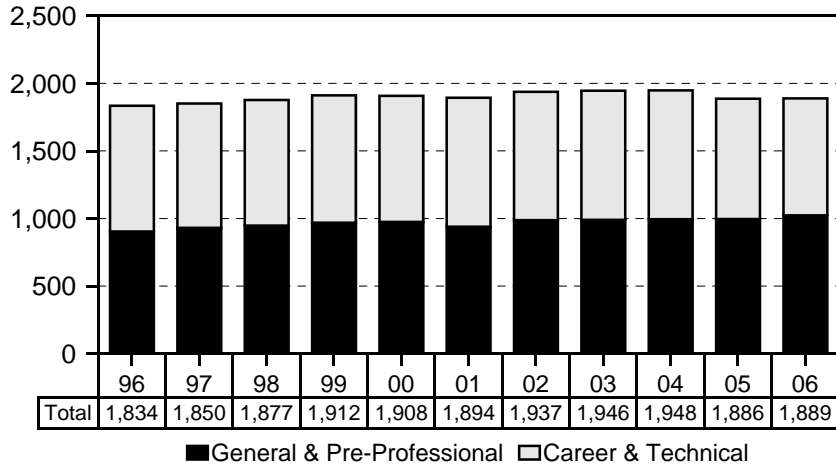
Table 1 Course Registration Summary, By Course Offering

Table 2 Student Semester Hours (SSH) and Course FTE

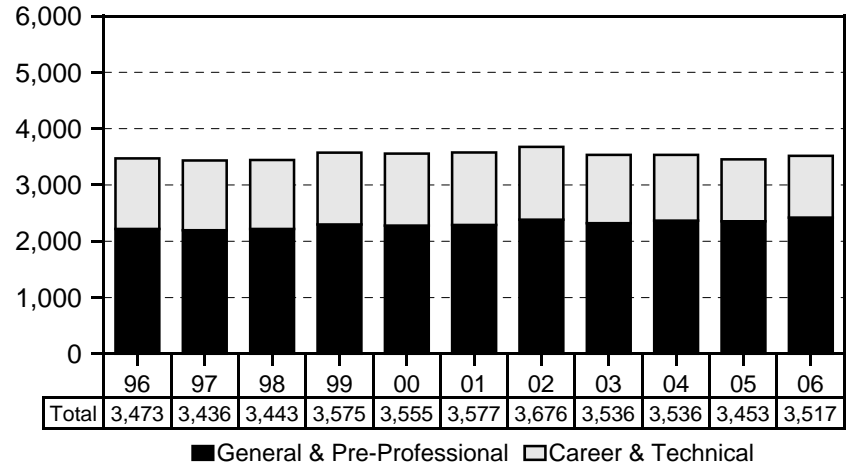
Table 3 Number of Classes and Average Class Size

University of Hawai'i Community Colleges, Fall Semesters

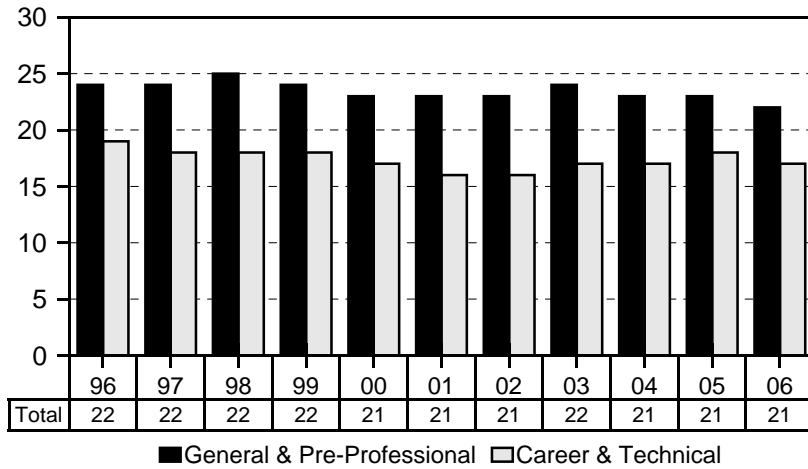
Number of Courses



Number of Classes



Average Class Size



Student Semester Hours

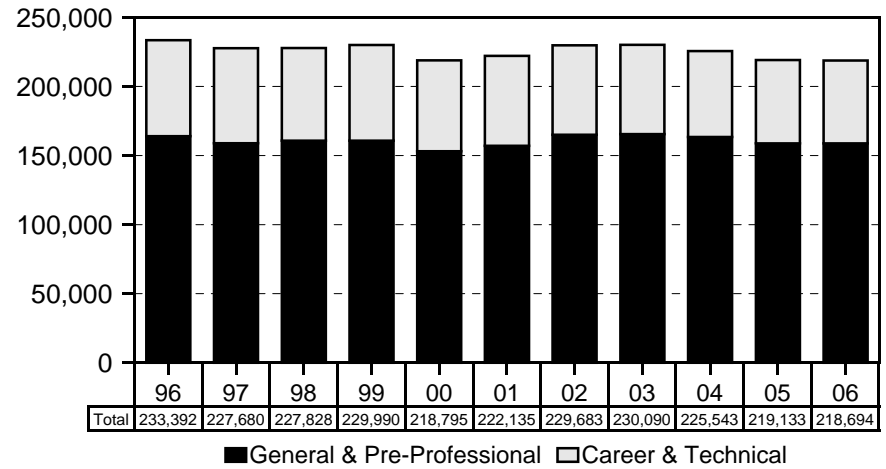


Table 1
Course Registration Summary, By Program
 University of Hawai'i Community Colleges
 Fall 2006

	COURSES		CLASSES		SEMESTER HOURS		STUDENT REGIS		STUDENT SEM HRS	
	No.	V%	No.	V%	No.	V%	No.	V%	No.	V%
UH COMMUNITY COLLEGES	1,889	100.4	3,517	100.2	10,530.5	100.0	73,956	99.9	218,694	100.0
Lower Division	1,873	99.5	3,501	99.7	10,480.5	99.5	73,791	99.7	218,183	99.7
Upper Division	16	0.9	16	0.5	50	0.5	165	0.2	511	0.3
General & Pre-Professional Instr	1,023	54.3	2,421	68.9	7,062	67.0	54,466	73.6	158,752	72.5
Lower Division	1,021	54.2	2,419	68.8	7,056	66.9	54,439	73.6	158,671	72.5
Upper Division	2	0.1	2	0.1	6	0.1	27	< .05	81	< .05
Humanities	519	27.5	1,305	37.2	3,960	37.6	27,636	37.3	83,964	38.3
Lower Division	517	27.4	1,303	37.1	3,954	37.5	27,609	37.3	83,883	38.3
Upper Division	2	0.1	2	0.1	6	0.1	27	< .05	81	< .05
Natural Sciences	321	17.1	756	21.5	2,031	19.3	17,441	23.6	47,794	21.9
Social Sciences	138	7.3	310	8.8	919	8.7	8,508	11.6	25,237	11.6
Lower Division	138	7.3	310	8.8	919	8.7	8,508	11.6	25,237	11.6
Upper Division		< .05		< .05		< .05		< .05		< .05
Other Gen Academic	45	2.4	50	1.4	152	1.4	881	1.1	1,757	0.7
Career & Technical Instr	866	46.1	1,096	31.3	3,468.5	33.0	19,490	26.3	59,942	27.5
Lower Division	852	45.3	1,082	30.9	3,424.5	32.6	19,352	26.1	59,512	27.2
Upper Division	14	0.8	14	0.4	44	0.4	138	0.2	430	0.3
Business Technologies	220	11.8	351	10.0	1,056	10.1	6,792	9.2	19,873	9.1
Lower Division	212	11.3	344	9.8	1,037	9.9	6,730	9.1	19,709	9.0
Upper Division	8	0.5	7	0.2	19	0.2	62	0.1	164	0.1
Food Service Tech	47	2.6	71	2.1	226	2.2	1,060	1.4	3,034	1.4
Food Service & Hospitality Ed	15	0.8	37	1.1	140	1.3	821	1.1	2,857	1.3
Health Service Tech	142	7.5	173	5.0	497.5	4.7	3,282	4.4	9,942	4.6
Lower Division	140	7.4	170	4.9	486.5	4.6	3,248	4.4	9,823	4.5
Upper Division	2	0.1	3	0.1	11	0.1	34	< .05	119	0.1
Public Service Tech	125	6.6	163	4.6	509	4.9	2,640	3.5	7,735	3.5
Other Technologies	316	16.7	301	8.5	1,040	9.8	4,613	6.3	15,798	7.3
Lower Division	312	16.5	297	8.4	1,026	9.7	4,571	6.2	15,651	7.2
Upper Division	4	0.2	4	0.1	14	0.1	42	0.1	147	0.1
Other Occup/Voc	1	0.1		< .05		< .05	282	0.4	703	0.3

1/ Number of classes excludes courses with catalog numbers -93 (Cooperative Education) and -99 (Directed Studies). Also excludes Aerospace Studies and Military Science classes.

2/ Semester hours excludes courses with catalog numbers -99 (Directed Studies).

3/ Vertical percents may not sum to 100% due to rounding.

SERIES: Course Registration Report

SOURCE: Banner Operational Data Store (ODS), IRO_SOCAD

University of Hawai'i, Institutional Research Office

Table 2
Course Registration Summary, By Campus
 University of Hawai'i Community Colleges
 Fall 2005 to Fall 2006

COLLEGE and YEAR	COURSES	CLASSES	SEMESTER HOURS	STUDENT REGIS	STUDENT SEM HRS	COURSE FTE
UH COMMUNITY COLLEGES						
2005	1,886	3,453	10,320	74,174	219,133	14,609
2006	1,889	3,517	10,530.5	73,956	218,694	14,579
Hawai'i						
2005	284	420	1,234	7,719	22,207	1,476
2006	266	415	1,239	7,450	21,781	1,453
Honolulu						
2005	343	580	1,784.5	12,535	35,988.5	2,401
2006	341	583	1,755	12,357	35,239	2,351
Kapi'olani						
2005	414	936	2,805.5	20,577	62,072.5	4,142
2006	412	949	2,884.5	20,686	62,646	4,175
Kaua'i						
2005	162	196	560	3,115	8,874	592
2006	165	204	583	3,318	9,428	627
Leeward						
2005	283	724	2,194	16,593	49,965	3,326
2006	289	720	2,186	16,606	49,986	3,336
Maui						
2005	269	382	1,121	8,534	25,055	1,672
2006	279	416	1,228	8,201	24,181	1,609
Windward						
2005	131	215	621	5,101	14,971	1,000
2006	137	230	655	5,338	15,433	1,028

1/ Number of classes excludes courses with catalog numbers -93 (Cooperative Education) and -99 (Directed Studies). Also excludes Aerospace Studies and Military Science classes.

2/ Semester hours excludes courses with catalog numbers -99 (Directed Studies).

SERIES: Course Registration Report

SOURCE: Banner Operational Data Store (ODS), IRO_SOCAD, IRO_SOCEX

University of Hawai'i, Institutional Research Office

© 2005-2008 University of Hawai'i

Table 3
Average Class Size, By Program and Campus
 University of Hawai'i Community Colleges
 Fall 2005 to Fall 2006

COLLEGE and YEAR	TOTAL	GEN & PRE-PROF INSTRUCTION	CAREER & TECH INSTRUCTION
UH COMMUNITY COLLEGES			
2005	21	23	18
2006	21	22	17
Hawai'i			
2005	18	20	15
2006	18	20	15
Honolulu			
2005	21	23	17
2006	20	23	17
Kapi'olani			
2005	22	23	20
2006	22	23	19
Kaua'i			
2005	16	17	14
2006	16	17	14
Leeward			
2005	23	24	18
2006	23	24	18
Maui			
2005	22	25	19
2006	20	21	18
Windward			
2005	24	25	14
2006	23	24	16

1/ Excludes courses numbered -93 (Cooperative Education) and -99 (Directed Studies). Also excludes Aerospace Studies and Military Science classes.

SERIES: Course Registration Report
 SOURCE: Banner Operational Data Store (ODS), IRO_SOCAD

University of Hawai'i, Institutional Research Office

© 2005-2008 University of Hawai'i

Table 4
Student Semester Hours (SSH) and Course FTE
 University of Hawai'i Community Colleges
 Fall 2005 to Fall 2006

	Fall 2005			Fall 2006		
	SSH		COURSE	SSH		COURSE
	No.	%Chg	FTE	No.	%Chg	FTE
UH COMMUNITY COLLEGES	219,133		14,609	218,694	(<1)	14,579
Lower Division	218,855		14,590	218,183	(<1)	14,545
Upper Division	278		19	511	84	34
General & Pre-Professional Instr	158,796		10,586	158,752	(<1)	10,583
Lower Division	158,790		10,586	158,671	(<1)	10,578
Upper Division	6		< .5	81	1250	5
Humanities	84,153		5,609	83,964	(<1)	5,599
Lower Division	84,150		5,609	83,883	(<1)	5,594
Upper Division	3		< .5	81	2600	5
Natural Sciences	46,777		3,116	47,794	2	3,188
Social Sciences	26,632		1,779	25,237	-5	1,681
Other Gen Academic	1,234		82	1,757	42	115
Career & Technical Instr	60,337		4,023	59,942	-1	3,996
Lower Division	60,065		4,004	59,512	-1	3,967
Upper Division	272		19	430	58	29
Business Technologies	19,264		1,284	19,873	3	1,324
Lower Division	19,091		1,272	19,709	3	1,313
Upper Division	173		12	164	-5	11
Food Service & Hospitality Ed	4,121		275	2,857	-31	190
Food Service Tech	2,870		191	3,034	6	202
Health Service Tech	9,968.5		663	9,942	(<1)	663
Lower Division	9,877.5		657	9,823	-1	655
Upper Division	91		6	119	31	8
Public Service Tech	7,542.5		502	7,735	3	516
Other Technologies	15,887		1,063	15,798	-1	1,054
Lower Division	15,879		1,062	15,651	-1	1,044
Upper Division	8		1	147	1738	10

1/ Percent change between -.49 and 0 is noted as (<1). Percent change between -.9 and -.5 is rounded to -1.

SERIES: Course Registration Report
 SOURCE: Banner Operational Data Store (ODS), IRO_SOCAD

University of Hawai'i, Institutional Research Office

© 2005-2008 University of Hawai'i

Table 5
Number of Classes and Average Class Size
 University of Hawai'i Community Colleges
 Fall 2005 to Fall 2006

	Fall 2005			Fall 2006		
	Classes		Avg	Classes		Avg
	No.	%Chg	Size	No.	%Chg	Size
UH COMMUNITY COLLEGES	3,453		21	3,517	2	21
Lower Division	3,443		21	3,501	2	21
Upper Division	10		10	16	60	10
General & Pre-Professional Instr	2,354		23	2,421	3	22
Lower Division	2,354		23	2,419	3	22
Upper Division				2		14
Humanities	1,286		21	1,305	1	21
Lower Division	1,286		21	1,303	1	21
Upper Division				2		14
Natural Sciences	714		24	756	6	23
Social Sciences	318		28	310	-3	27
Other Gen Academic	36		16	50	39	17
Career & Technical Instr	1,099		18	1,096	(<1)	17
Lower Division	1,089		18	1,082	-1	17
Upper Division	10		10	14	40	10
Business Technologies	357		19	351	-2	19
Lower Division	350		19	344	-2	19
Upper Division	7		10	7	0	9
Food Service & Hospitality Ed	53		23	37	-30	22
Food Service Tech	65		15	71	9	15
Health Service Tech	168		20	173	3	19
Lower Division	165		21	170	3	19
Upper Division	3		9	3	0	11
Public Service Tech	154		16	163	6	15
Other Technologies	302		15	301	(<1)	15
Lower Division	302		15	297	-2	15
Upper Division				4		11

1/ Excludes courses numbered -93 (Cooperative Education) and -99 (Directed Studies). Also excludes Aerospace Studies and Military Science classes.

2/ Percent change between -.49 and 0 is noted as (<1). Percent change between -.9 and -.5 is rounded to -1.

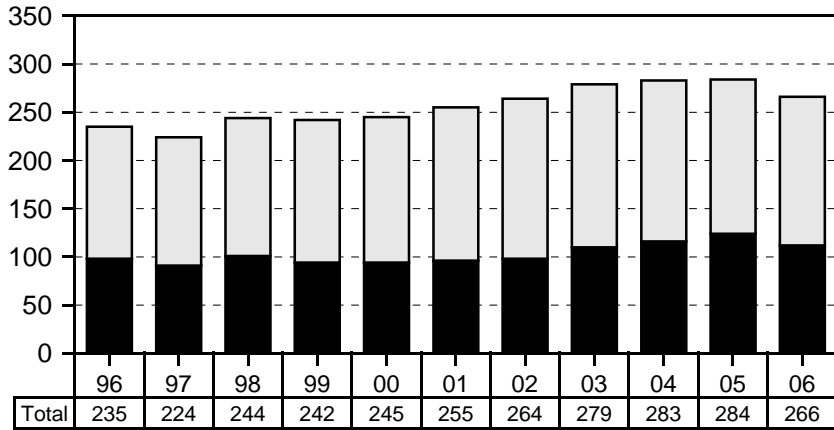
SERIES: Course Registration Report
 SOURCE: Banner Operational Data Store (ODS), IRO_SOCAD

University of Hawai'i, Institutional Research Office

© 2005-2008 University of Hawai'i

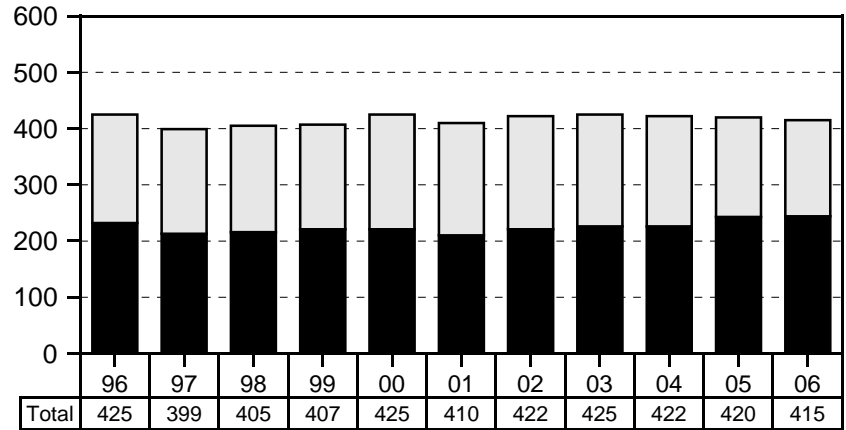
Hawai'i Community College, Fall Semesters

Number of Courses



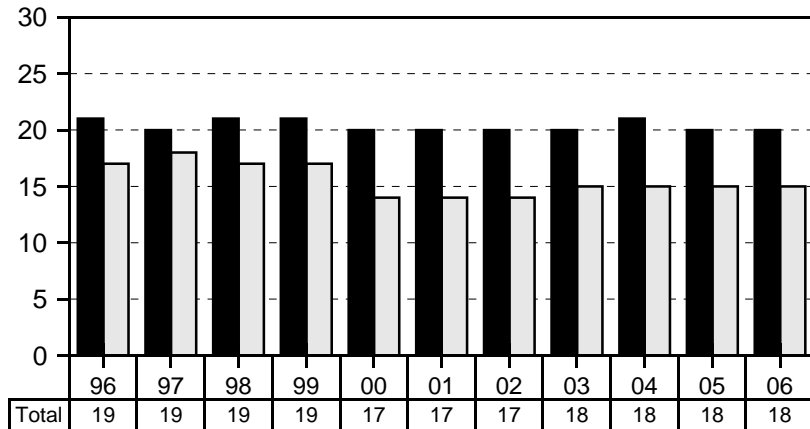
■ General & Pre-Professional □ Career & Technical

Number of Classes



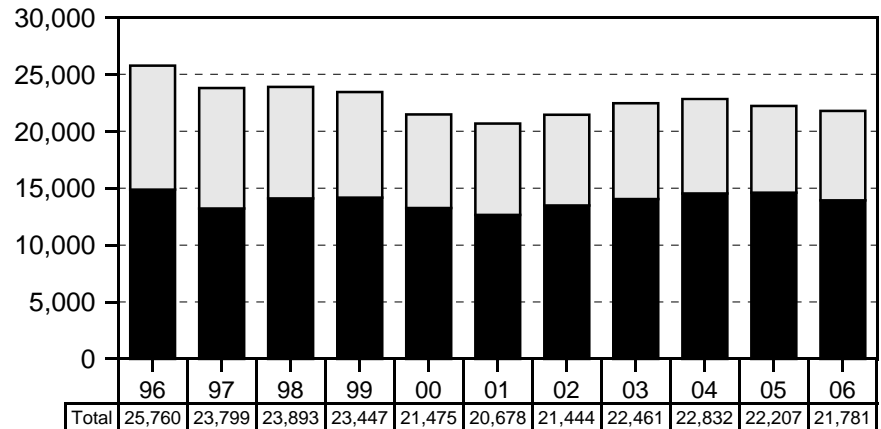
■ General & Pre-Professional □ Career & Technical

Average Class Size



■ General & Pre-Professional □ Career & Technical

Student Semester Hours



■ General & Pre-Professional □ Career & Technical

Table 1
Course Registration Summary, By Course Offering
Hawai'i Community College
Fall 2006

COURSE OFFERING	COURSES	CLASSES		SEMESTER HOURS	STUDENT REGIS	STUDENT SEM HRS	COURSE FTE
		No.	Avg Size				
TOTAL	266	415	18	1,239	7,450	21,781	1,453
General & Pre-Professional Instr	112	244	20	695	4,889	13,939	929
Humanities	55	139	19	428	2,658	8,132	542
Art	13	17	14	51	246	738	49
Dance	2	2	18	6	35	105	7
English	10	60	18	180	1,083	3,249	217
English as a Second Language	5	5	13	24	64	309	21
Foreign Languages	3	6	21	24	125	500	33
Japanese	1	2	21	8	42	168	11
Hawaiian	2	4	21	16	83	332	22
Hawaiian Studies	10	17	22	47	379	1,053	70
History	6	17	23	51	388	1,164	78
Philosophy	2	3	29	9	87	261	17
Religion	2	2	28	6	55	165	11
Speech & Communication	2	10	20	30	196	588	39
Natural Sciences	36	72	21	174	1,506	3,688	246
Biological Sciences	10	19	20	39	376	804	54
Biology	6	15	19	31	289	629	42
Botany	2	2	23	4	46	92	6
Microbiology	2	2	21	4	41	83	6
Chemistry	4	4	12	8	49	107	7
Mathematics	16	42	22	108	923	2,335	156
Physical Sciences	2	2	23	6	45	135	9
Astronomy	1	1	24	3	24	72	5
Physics	1	1	21	3	21	63	4
Science	4	5	23	13	113	307	20
Social Sciences	18	27	23	79	621	1,849	124
Anthropology	2	4	26	12	105	315	21
Economics	1	1	6	3	6	18	1
Family Resources	1	2	30	6	59	177	12
Geography	5	6	19	16	116	334	22
Political Science	1	1	15	3	15	45	3
Psychology	2	5	26	15	129	387	26
Social Sciences	2	2	20	6	40	120	8
Sociology	3	5	25	15	123	369	25
Women's Studies	1	1	28	3	28	84	6
Other Gen Academic	3	6	17	14	104	270	17
Interdisciplinary Studies	2	3	19	9	57	171	11
Learning Skills		2	11	2	21	21	1
University	1	1	26	3	26	78	5
Career & Technical Instr	154	171	15	544	2,561	7,842	524
Business Technologies	43	50	14	147	728	1,954	130
Accounting	5	7	14	21	101	303	20
Business	6	7	14	19	97	249	17
Data Processing	6	6	8	23	48	190	13
Information & Computer Sciences	1	1	18	4	18	72	5
Information Technology	5	5	6	19	30	118	8
Entrepreneurship	1	1	17	3	17	51	3
Sales & Management	12	10	15	33	166	496	33
Hotel Operations	5	4	12	12	49	147	10
Management	3	3	16	9	47	141	9

COURSE OFFERING	COURSES	CLASSES		SEMESTER HOURS	STUDENT REGIS	STUDENT SEM HRS	COURSE FTE
		No.	Avg Size				
Marketing	4	3	20	12	70	208	14
Office Admin & Tech	13	19	15	48	299	665	44
Business Technology	12	19	15	48	296	662	44
Office Administration & Tech	1				3	3	
Food Service Tech	7	13	15	49	201	720	48
Food Service	7	13	15	49	201	720	48
Health Service Tech	12	11	26	42	283	1,012	68
Food Science & Human Nutrition	1	1	34	3	34	102	7
Nursing	11	10	25	39	249	910	61
Public Service Tech	23	28	16	96	476	1,440	96
Administration of Justice	8	8	22	25	173	519	35
Human Services	15	20	14	71	303	921	61
Education	8	12	9	41	103	321	21
Human Services	3	3	30	15	117	351	23
Substance Abuse	4	5	17	15	83	249	17
Other Technologies	69	69	13	210	873	2,716	182
Agriculture	7	7	7	18	51	129	9
Architl Engineerg & CAD Tech	11	11	14	24	158	356	24
Auto Body Repair & Painting	12	12	11	24	137	275	18
Automotive Mechanics Tech	7	7	21	24	149	504	34
Blueprint Reading	2	2	23	6	46	138	9
Carpentry	2	2	15	24	29	348	23
Diesel Mechanics	6	6	16	12	96	192	13
Electricity	2	2	16	24	32	384	26
Electronics	8	8	5	24	40	120	8
Machine Shop	5	5	11	10	56	76	5
Welding	7	7	11	20	79	194	13

1/ Number of classes excludes courses with catalog numbers -93 (Cooperative Education) and -99 (Directed Studies). Also excludes Aerospace Studies and Military Science classes.

2/ Semester hours excludes courses with catalog numbers -99 (Directed Studies).

SERIES: Course Registration Report

SOURCE: Banner Operational Data Store (ODS), IRO_SOCAD, IRO_SOCEX

University of Hawai'i, Institutional Research Office

Table 2
Student Semester Hours (SSH) and Course FTE
Hawai'i Community College
Fall 2005 to Fall 2006

	Fall 2005			Fall 2006		
	SSH		COURSE	SSH		COURSE
	No.	%Chg	FTE	No.	%Chg	FTE
TOTAL	22,207		1,476	21,781	-2	1,453
General & Pre-Professional Instr	14,603		970	13,939	-5	929
Humanities	8,409		559	8,132	-3	542
Natural Sciences	3,687		244	3,688	<1	246
Social Sciences	2,353		157	1,849	-21	124
Other Gen Academic	154		10	270	75	17
Career & Technical Instr	7,604		506	7,842	3	524
Business Technologies	1,917		128	1,954	2	130
Food Service Tech	652		43	720	10	48
Health Service Tech	798		53	1,012	27	68
Public Service Tech	1,293		86	1,440	11	96
Other Technologies	2,944		196	2,716	-8	182

1/ Percent change between -.49 and 0 is noted as (<1). Percent change between -.9 and -.5 is rounded to -1.

SERIES: Course Registration Report
SOURCE: Banner Operational Data Store (ODS), IRO_SOCAD

University of Hawai'i, Institutional Research Office

© 2005-2008 University of Hawai'i

Table 3
Number of Classes and Average Class Size
Hawai'i Community College
Fall 2005 to Fall 2006

	Fall 2005			Fall 2006		
	Classes		Avg	Classes		Avg
	No.	%Chg	Size	No.	%Chg	Size
TOTAL	420		18	415	-1	18
General & Pre-Professional Instr	243		20	244	<1	20
Humanities	140		19	139	-1	19
Natural Sciences	65		21	72	11	21
Social Sciences	34		23	27	-21	23
Other Gen Academic	4		14	6	50	17
Career & Technical Instr	177		15	171	-3	15
Business Technologies	61		14	50	-18	14
Food Service Tech	13		14	13	0	15
Health Service Tech	11		24	11	0	26
Public Service Tech	21		19	28	33	16
Other Technologies	71		14	69	-3	13

1/ Excludes courses numbered -93 (Cooperative Education) and -99 (Directed Studies). Also excludes Aerospace Studies and Military Science classes.

2/ Percent change between -.49 and 0 is noted as (<1). Percent change between -.9 and -.5 is rounded to -1.

SERIES: Course Registration Report

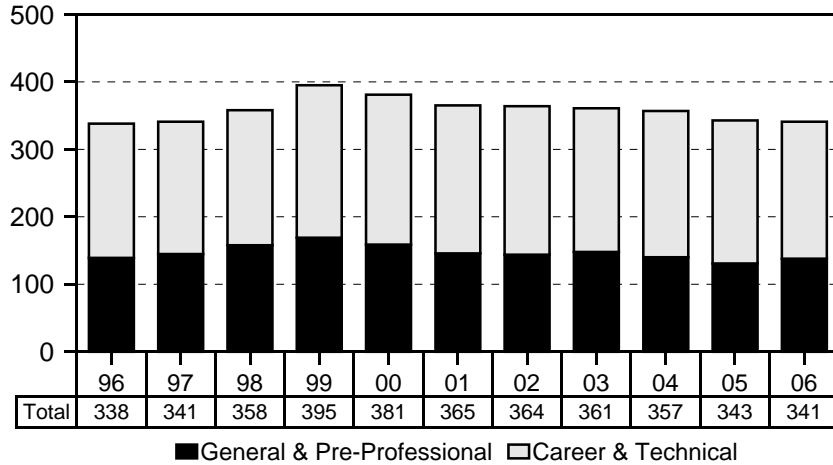
SOURCE: Banner Operational Data Store (ODS), IRO_SOCAD

University of Hawai'i, Institutional Research Office

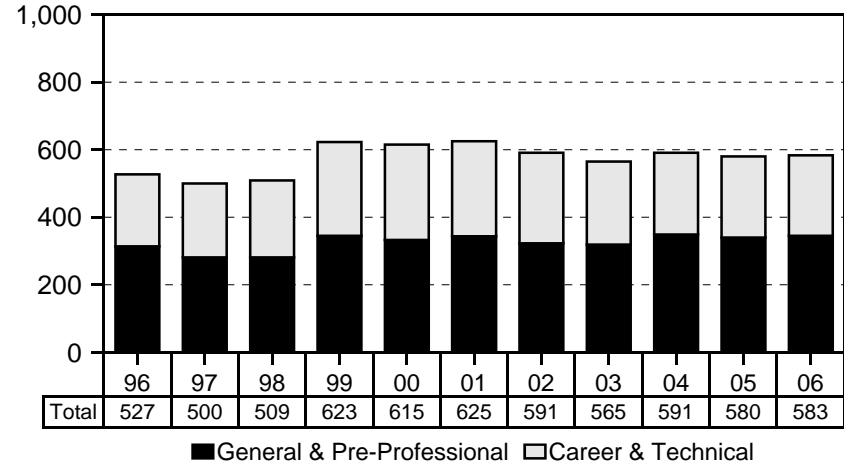
© 2005-2008 University of Hawai'i

Honolulu Community College, Fall Semesters

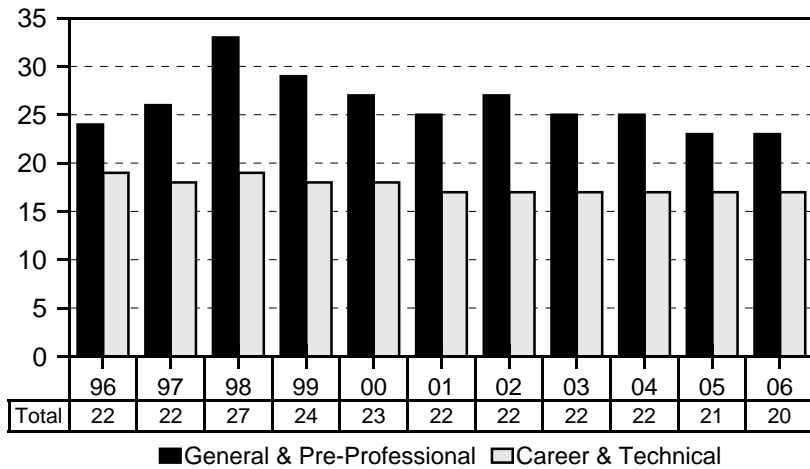
Number of Courses



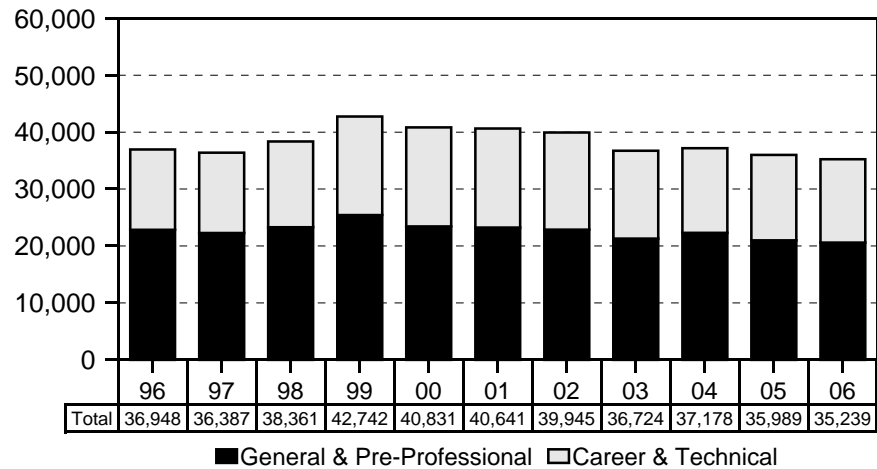
Number of Classes



Average Class Size



Student Semester Hours



Note: Beginning Fall 1999, includes classes offered through the off-campus credit program.

Table 1
Course Registration Summary, By Course Offering
Honolulu Community College
Fall 2006

COURSE OFFERING	COURSES	CLASSES		SEMESTER HOURS	STUDENT REGIS	STUDENT SEM HRS	COURSE FTE
		No.	Avg Size				
TOTAL	341	583	20	1,755	12,357	35,239	2,351
Lower Division	337	579	20	1,741	12,315	35,092	2,341
Upper Division	4	4	11	14	42	147	10
General & Pre-Professional Instr	138	345	23	931	7,952	20,595	1,372
Humanities	50	154	23	425	3,480	9,307	620
Art	4	6	18	18	110	330	22
Asian Studies	1	1	33	3	33	99	7
English	14	74	23	166	1,681	3,541	236
English as a Second Language	7	7	18	33	124	636	42
Foreign Languages	5	7	17	27	118	460	30
Japanese	2	3	19	12	58	232	15
Spanish	1	2	14	8	27	108	7
Hawaiian	2	2	17	7	33	120	8
Hawaiian Studies	1	3	27	9	82	246	16
History	4	17	28	51	478	1,434	96
Humanities	1			1	1	2	
Music	2	2	17	6	33	99	7
Philosophy	5	13	21	39	277	831	55
Religion	2	6	23	18	135	405	27
Speech	3	17	24	51	405	1,215	81
Theatre	1	1	3	3	3	9	1
Natural Sciences	54	142	23	345	3,288	7,820	523
Biological Sciences	10	16	21	43	332	924	62
Biology	1	4	23	12	92	276	18
Botany	1	1	33	3	33	99	7
Microbiology	2	5	22	13	110	301	20
Zoology	6	6	16	15	97	248	17
Chemistry	8	12	18	30	220	600	40
Mathematics	15	87	25	194	2,198	4,651	310
Meteorology	2	2	14	4	27	55	4
Oceanography	4	5	27	13	134	362	24
Physical Sciences	12	17	19	50	319	1,023	69
Astronomy	1	4	29	12	114	342	23
Geology & Geophysics	3	4	16	10	65	159	11
Physics	8	9	16	28	140	522	35
Science	3	3	19	11	58	205	14
Social Sciences	24	47	23	140	1,098	3,262	216
American Studies	1	1	12	3	12	36	2
Anthropology	2	3	27	9	80	240	16
Economics	3	4	25	12	99	297	20
Family Resources	6	10	21	28	211	603	40
Geography	3	4	23	12	92	276	18
Political Science	2	3	24	9	71	213	14
Psychology	3	15	26	45	397	1,191	79
Social Sciences	1			1	1	1	
Sociology	2	6	19	18	112	336	22
Women's Studies	1	1	23	3	23	69	5
Other Gen Academic	10	2	28	21	86	206	13
Aerospace Studies	4			8	18	21	1
Learning Skills	1	1	29	3	29	87	6
Military Science & Leadership	4			7	13	20	1

COURSE OFFERING	COURSES	CLASSES		SEMESTER HOURS	STUDENT REGIS	STUDENT SEM HRS	COURSE FTE
		No.	Avg Size				
Student Development	1	1	26	3	26	78	5
Career & Technical Instr	203	238	17	824	4,405	14,644	979
Lower Division	199	234	17	810	4,363	14,497	969
Upper Division	4	4	11	14	42	147	10
Business Technologies	6	20	21	61	417	1,260	84
Accounting	1	1	26	3	26	78	5
Information & Computer Sciences	5	19	21	58	391	1,182	79
Health Service Tech	2	2	17	6	33	99	7
Food Science & Human Nutrition	1	1	29	3	29	87	6
Pharmacology	1	1	4	3	4	12	1
Public Service Tech	51	76	15	221	1,245	3,536	236
Administration of Justice	9	8	20	25	164	490	33
Fire & Envir Emergency Resp	12	21	15	67	336	1,034	69
Human Services	20	33	13	87	471	1,218	81
Education	17	30	13	79	409	1,078	72
Social Services	3	3	15	8	62	140	9
Industrial Education	2	7	22	20	157	450	30
IED Drafting & Design	2	7	22	20	157	450	30
Occupational Envir Safety Mgt	8	7	16	22	117	344	23
Other Technologies	143	140	17	536	2,428	9,046	605
Lower Division	139	136	17	522	2,386	8,899	595
Upper Division	4	4	11	14	42	147	10
Aeronautics	4	4	12	28	47	329	22
Architl Engineerg & CAD Tech	11	10	22	28	224	646	43
Auto Body Repair & Painting	12	11	21	24	236	508	34
Automotive Mechanics Tech	11	10	17	63	181	955	64
Commercial Aviation	7	8	12	28	92	318	21
Lower Division	5	6	12	22	71	255	17
Upper Division	2	2	11	6	21	63	4
Blueprint Reading	1	2	32	6	63	189	13
Boat Maintenance & Repair	10	9	12	25	108	287	19
Carpentry	3	3	21	26	63	518	35
Communication Arts	15	14	13	54	180	661	44
Comp Electronics & Network Tech	17	16	14	67	247	920	62
Lower Division	15	14	15	59	226	836	56
Upper Division	2	2	11	8	21	84	6
Cosmetology	11	9	21	42	192	1,027	68
Diesel Mechanics	5	5	17	12	85	204	14
Electrical Installation & Main	5	4	21	21	85	415	28
Fashion Technology	9	10	19	33	188	595	40
Refrigeration & Air Cond	6	4	21	28	87	597	40
Sheet Metal & Plastics	4	4	21	13	84	273	18
Welding	12	17	15	38	266	604	40
Other Occup/Voc	1				282	703	47
Work Cycle	1				282	703	47

1/ Number of classes excludes courses with catalog numbers -93 (Cooperative Education) and -99 (Directed Studies). Also excludes Aerospace Studies and Military Science classes.

2/ Semester hours excludes courses with catalog numbers -99 (Directed Studies).

SERIES: Course Registration Report

SOURCE: Banner Operational Data Store (ODS), IRO_SOCAD, IRO_SOCEX

University of Hawai'i, Institutional Research Office

Table 2
Student Semester Hours (SSH) and Course FTE
Honolulu Community College
Fall 2005 to Fall 2006

	Fall 2005			Fall 2006		
	SSH		COURSE	SSH		COURSE
	No.	%Chg	FTE	No.	%Chg	FTE
TOTAL	35,988.5		2,401	35,239	-2	2,351
Lower Division	35,974.5		2,400	35,092	-2	2,341
Upper Division	14		1	147	950	10
General & Pre-Professional Instr	21,012		1,402	20,595	-2	1,372
Lower Division	21,006		1,402	20,595	-2	1,372
Upper Division	6		< .5			
Humanities	10,061		670	9,307	-7	620
Lower Division	10,058		670	9,307	-7	620
Upper Division	3		< .5			
Natural Sciences	7,378		493	7,820	6	523
Social Sciences	3,447		231	3,262	-5	216
Other Gen Academic	126		8	206	63	13
Lower Division	123		8	206	67	13
Upper Division	3		< .5			
Career & Technical Instr	14,976.5		999	14,644	-2	979
Lower Division	14,968.5		998	14,497	-3	969
Upper Division	8		1	147	1738	10
Business Technologies	1,353		90	1,260	-7	84
Health Service Tech	363		24	99	-73	7
Public Service Tech	3,541.5		235	3,536	(<1)	236
Other Technologies	9,039		605	9,046	<1	605
Lower Division	9,031		604	8,899	-1	595
Upper Division	8		1	147	1738	10
Other Occup/Voc	680		45	703	3	47

1/ Percent change between -.49 and 0 is noted as (<1). Percent change between -.9 and -.5 is rounded to -1.

SERIES: Course Registration Report
SOURCE: Banner Operational Data Store (ODS), IRO_SOCAD

University of Hawai'i, Institutional Research Office

© 2005-2008 University of Hawai'i

Table 3
Number of Classes and Average Class Size
Honolulu Community College
Fall 2005 to Fall 2006

	Fall 2005			Fall 2006		
	Classes		Avg	Classes		Avg
	No.	%Chg	Size	No.	%Chg	Size
TOTAL	580		21	583	1	20
Lower Division	580		21	579	(<1)	20
Upper Division				4		11
General & Pre-Professional Instr	340		23	345	1	23
Humanities	157		23	154	-2	23
Natural Sciences	134		24	142	6	23
Social Sciences	48		24	47	-2	23
Other Gen Academic	1		29	2	100	28
Career & Technical Instr	240		17	238	-1	17
Lower Division	240		17	234	-2	17
Upper Division				4		11
Business Technologies	22		21	20	-9	21
Health Service Tech	4		30	2	-50	17
Public Service Tech	72		16	76	6	15
Other Technologies	142		17	140	-1	17
Lower Division	142		17	136	-4	17
Upper Division				4		11

1/ Excludes courses numbered -93 (Cooperative Education) and -99 (Directed Studies). Also excludes Aerospace Studies and Military Science classes.

2/ Percent change between -.49 and 0 is noted as (<1). Percent change between -.9 and -.5 is rounded to -1.

SERIES: Course Registration Report

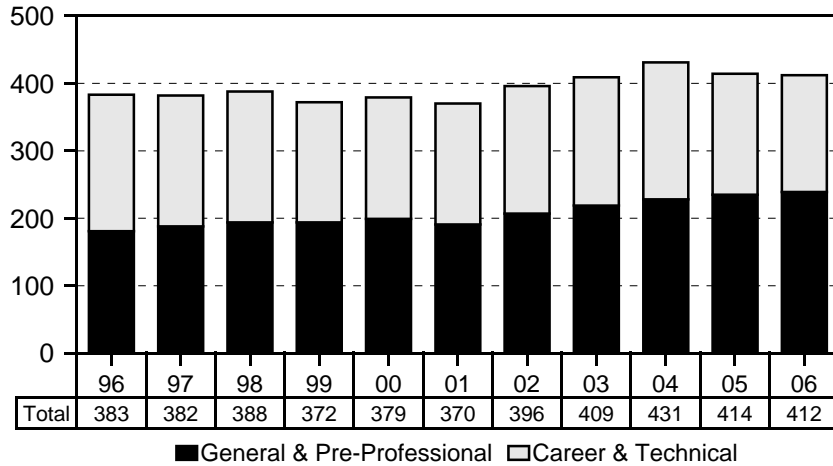
SOURCE: Banner Operational Data Store (ODS), IRO_SOCAD

University of Hawai'i, Institutional Research Office

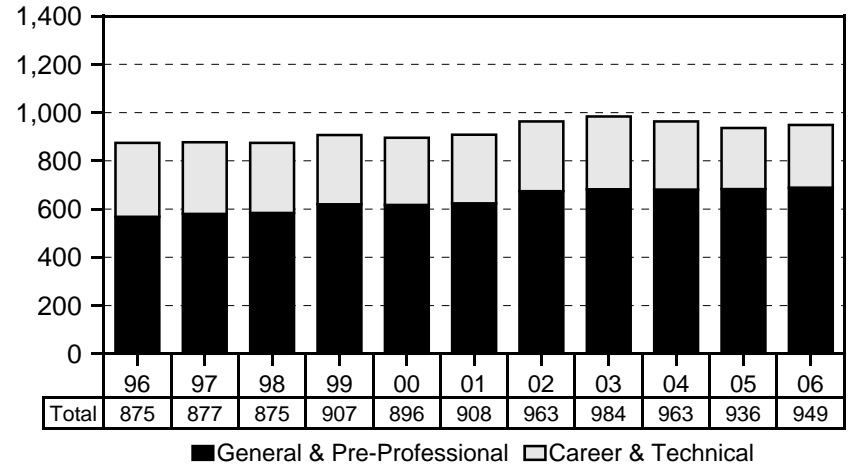
© 2005-2008 University of Hawai'i

Kapi'olani Community College, Fall Semesters

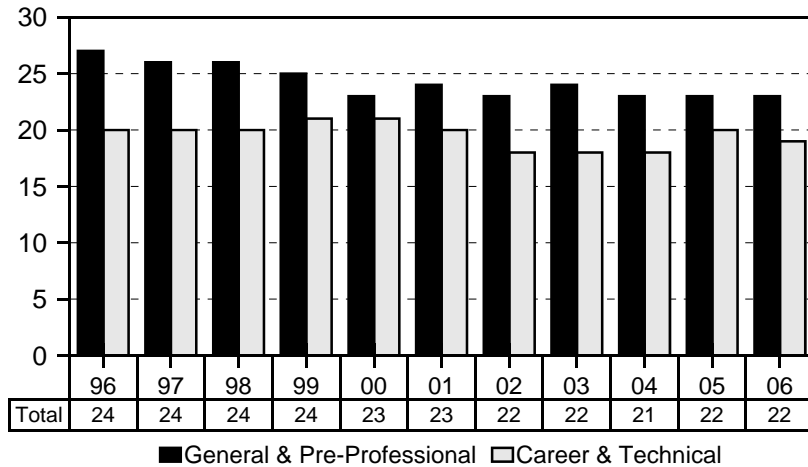
Number of Courses



Number of Classes



Average Class Size



Student Semester Hours

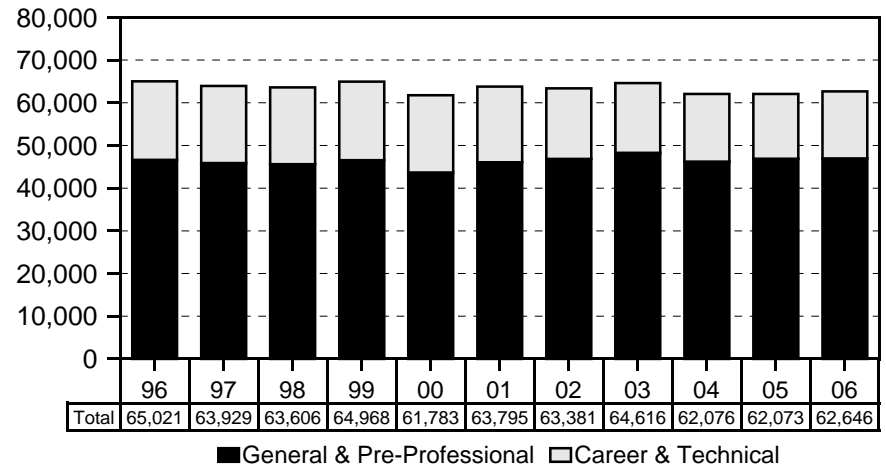


Table 1
Course Registration Summary, By Course Offering
 Kapi'olani Community College
 Fall 2006

COURSE OFFERING	COURSES	CLASSES		SEMESTER HOURS	STUDENT REGIS	STUDENT SEM HRS	COURSE FTE
		No.	Avg Size				
TOTAL	412	949	22	2,884.5	20,686	62,646	4,175
Lower Division	410	946	22	2,873.5	20,652	62,527	4,167
Upper Division	2	3	11	11	34	119	8
General & Pre-Professional Instr	239	689	23	2,075	15,574	46,963	3,132
Humanities	147	392	21	1,251	8,102	26,062	1,737
Art	31	63	17	190	1,084	3,252	217
Asian Studies	1	1	33	3	33	99	7
Communication	1	1	23	3	23	69	5
Dance	6	7	14	21	97	291	19
English	16	103	19	309	1,987	5,961	397
English as a Second Language	1	5	19	15	97	291	19
Eng for Speakers of Other Lang	7	15	22	81	326	1,754	117
Foreign Languages	32	69	19	279	1,331	5,321	355
American Sign Language	2	7	19	28	131	524	35
Chinese	3	4	23	16	91	364	24
Japanese	9	25	21	108	514	2,143	143
Korean	5	6	14	25	84	342	23
East Asian Languages & Lit	2	2	16	6	32	96	6
French	2	2	18	7	35	130	9
Spanish	4	12	20	45	239	902	60
Filipino	1	1	22	4	22	88	6
Hawaiian	4	10	18	40	183	732	49
Hawaiian Studies	4	23	28	69	652	1,956	130
History	7	22	31	66	683	2,049	137
Interpretation & Translation	4	4	11	8	42	84	6
Journalism	4	4	13	6	51	137	9
Lang & Lit Europe & Americas	1	1	16	3	16	48	3
Linguistics	1	3	21	9	64	192	13
Music	17	24	18	48	422	976	65
Pacific Islands Studies	1	1	24	3	24	72	5
Philosophy	5	10	29	30	294	882	59
Religion	2	7	33	21	232	696	46
Speech	4	24	24	72	577	1,731	115
Theatre	2	5	13	15	67	201	13
Natural Sciences	61	219	24	562	5,332	14,538	970
Biochemistry	1	1	29	3	29	87	6
Biological Sciences	23	97	23	210	2,241	5,411	361
Biology	11	27	23	67	608	1,621	108
Botany	5	5	22	11	111	279	19
Microbiology	3	11	23	28	256	685	46
Zoology	4	54	23	104	1,266	2,826	188
Chemistry	7	27	24	64	660	1,684	112
Civil Engineering	1	1	24	3	24	72	5
Electrical Engineering	2	2	11	8	21	84	6
Mathematics	15	74	27	234	1,972	6,228	415
Oceanography	1	2	27	6	53	159	11
Physical Sciences	10	14	22	31	306	735	49
Astronomy	1	1	22	3	22	66	4
Geology & Geophysics	2	4	29	8	114	250	17
Physics	7	9	19	20	170	419	28
Physiology	1	1	26	3	26	78	5

COURSE OFFERING	COURSES	CLASSES		SEMESTER HOURS	STUDENT REGIS	STUDENT SEM HRS	COURSE FTE
		No.	Avg Size				
Social Sciences	25	70	30	204	2,066	6,078	406
American Studies	1	2	19	6	37	111	7
Anthropology	3	6	34	18	204	612	41
Economics	3	9	27	27	240	720	48
Family Resources	1	12	26	36	313	939	63
Geography	4	12	32	30	388	1,044	70
Political Science	3	4	29	12	116	348	23
Psychology	5	17	31	51	530	1,590	106
Social Sciences	1	1	34	3	34	102	7
Sociology	4	7	29	21	204	612	41
Other Gen Academic	6	8	9	58	74	285	19
Interdisciplinary Studies	1	3	19	9	56	168	11
Learning Skills	5	5	4	49	18	117	8
Career & Technical Instr	173	260	19	809.5	5,112	15,683	1,043
Lower Division	171	257	19	798.5	5,078	15,564	1,035
Upper Division	2	3	11	11	34	119	8
Business Technologies	53	88	25	279	2,218	6,720	447
Accounting	7	17	27	51	455	1,365	91
Business	2	5	29	15	145	435	29
Business Law	1	5	32	15	162	486	32
eBusiness	6	6	19	18	116	348	23
Entrepreneurship	3	3	27	9	80	240	16
Hospitality & Tourism	15	20	24	72	511	1,596	106
Information & Computer Sciences	5	19	25	57	475	1,425	95
Information Technology	10	8	17	27	150	453	30
Management	2	2	27	6	53	159	11
Marketing	2	3	24	9	71	213	14
Food Service & Hospitality Ed	15	37	22	140	821	2,857	190
Food Service & Hosp Educ	15	37	22	140	821	2,857	190
Health Service Tech	89	119	15	337.5	1,786	5,245	349
Lower Division	87	116	15	326.5	1,752	5,126	341
Upper Division	2	3	11	11	34	119	8
Dental Assisting	8	9	7	17	60	123	8
Emergency Medical Technician	3	5	8	40	38	425	28
Exercise & Sport Science	5	7	17	16	119	323	22
Health	13	20	25	36	492	807	54
Medical Assisting	13	13	10	25	132	285	19
Medical Laboratory Technician	5	6	9	15	54	128	9
Mobile Intensv Care Technician	2	2	18	8	35	140	9
Nursing	11	13	22	67	285	1,356	90
Occupational Therapy Assistant	7	9	9	23	85	227	15
Pharmacology	1	2	51	6	102	306	20
Physical Therapist Assistant	7	7	10	11.5	72	117	8
Radiologic Technology	8	18	12	43	214	665	44
Respiratory Care	6	8	12	30	98	343	23
Lower Division	4	5	13	19	64	224	15
Upper Division	2	3	11	11	34	119	8
Public Service Tech	16	16	17	53	287	861	57
Human Services	16	16	17	53	287	861	57
Deaf Studies	2	2	21	6	41	123	8
COURSE OFFERING	COURSES	CLASSES		SEMESTER HOURS	STUDENT REGIS	STUDENT SEM HRS	COURSE FTE
		No.	Avg Size				
Education	2	2	17	6	34	102	7
Law	12	12	16	41	212	636	42

1/ Number of classes excludes courses with catalog numbers -93 (Cooperative Education) and -99 (Directed Studies). Also excludes Aerospace Studies and Military Science classes.

2/ Semester hours excludes courses with catalog numbers -99 (Directed Studies).

SERIES: Course Registration Report
SOURCE: Banner Operational Data Store (ODS), IRO_SOCAD, IRO_SOCEX

University of Hawai'i, Institutional Research Office

© 2005-2008 University of Hawai'i

Table 2
Student Semester Hours (SSH) and Course FTE
 Kapi'olani Community College
 Fall 2005 to Fall 2006

	Fall 2005			Fall 2006		
	SSH		COURSE	SSH		COURSE
	No.	%Chg	FTE	No.	%Chg	FTE
TOTAL	62,072.5		4,142	62,646	1	4,175
Lower Division	61,981.5		4,136	62,527	1	4,167
Upper Division	91		6	119	31	8
General & Pre-Professional Instr	46,893		3,129	46,963	<1	3,132
Humanities	25,808		1,722	26,062	1	1,737
Natural Sciences	14,476		966	14,538	<1	970
Social Sciences	6,438		430	6,078	-6	406
Other Gen Academic	171		11	285	67	19
Career & Technical Instr	15,179.5		1,013	15,683	3	1,043
Lower Division	15,088.5		1,007	15,564	3	1,035
Upper Division	91		6	119	31	8
Business Technologies	4,762		318	6,720	41	447
Food Service & Hospitality Ed	4,121		275	2,857	-31	190
Health Service Tech	5,416.5		361	5,245	-3	349
Lower Division	5,325.5		355	5,126	-4	341
Upper Division	91		6	119	31	8
Public Service Tech	880		59	861	-2	57

1/ Percent change between 0 and -.49 is noted as (<1). Percent change between -.9 and -.5 is rounded to -1.

SERIES: Course Registration Report
 SOURCE: Banner Operational Data Store (ODS), IRO_SOCAD

University of Hawai'i, Institutional Research Office

© 2005-2008 University of Hawai'i

Table 3
Number of Classes and Average Class Size
 Kapi'olani Community College
 Fall 2005 to Fall 2006

	Fall 2005			Fall 2006		
	Classes		Avg	Classes		Avg
	No.	%Chg	Size	No.	%Chg	Size
TOTAL	936		22	949	1	22
Lower Division	933		22	946	1	22
Upper Division	3		9	3	0	11
General & Pre-Professional Instr	683		23	689	1	23
Humanities	384		21	392	2	21
Natural Sciences	218		24	219	<1	24
Social Sciences	75		29	70	-7	30
Other Gen Academic	6		9	8	33	9
Career & Technical Instr	253		20	260	3	19
Lower Division	250		20	257	3	19
Upper Division	3		9	3	0	11
Business Technologies	70		23	88	26	25
Food Service & Hospitality Ed	53		23	37	-30	22
Health Service Tech	113		17	119	5	15
Lower Division	110		17	116	5	15
Upper Division	3		9	3	0	11
Public Service Tech	17		17	16	-6	17

1/ Excludes courses numbered -93 (Cooperative Education) and -99 (Directed Studies). Also excludes Aerospace Studies and Military Science classes.

2/ Percent change between -.49 and 0 is noted as (<1). Percent change between -.9 and -.5 is rounded to -1.

SERIES: Course Registration Report

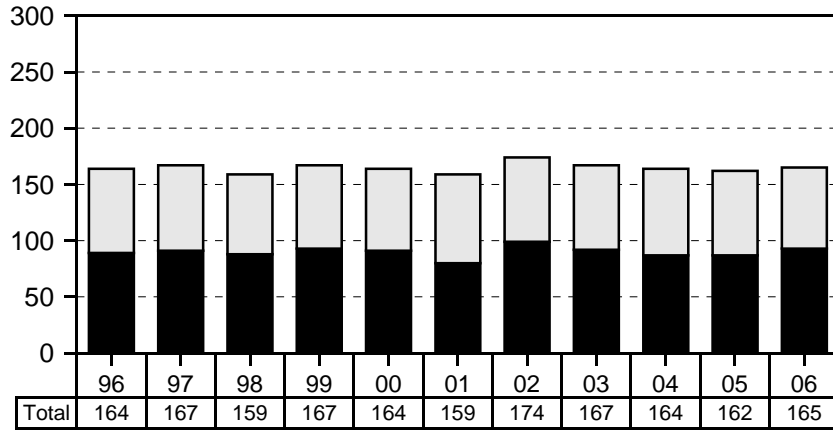
SOURCE: Banner Operational Data Store (ODS), IRO_SOCAD

University of Hawai'i, Institutional Research Office

© 2005-2008 University of Hawai'i

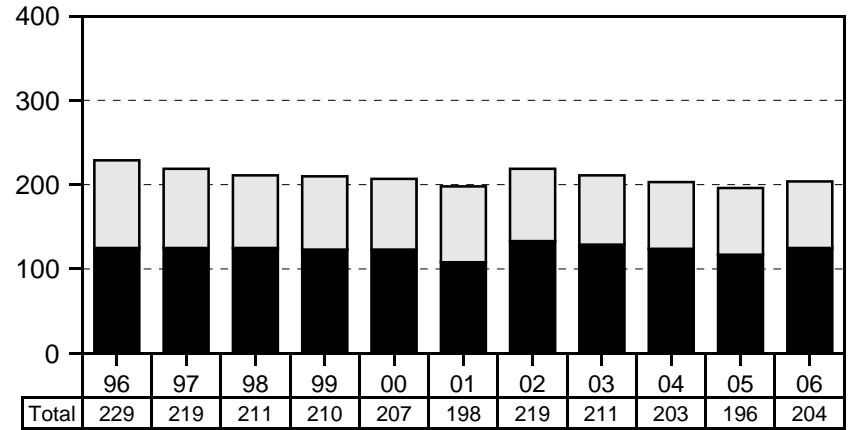
Kaua'i Community College, Fall Semesters

Number of Courses



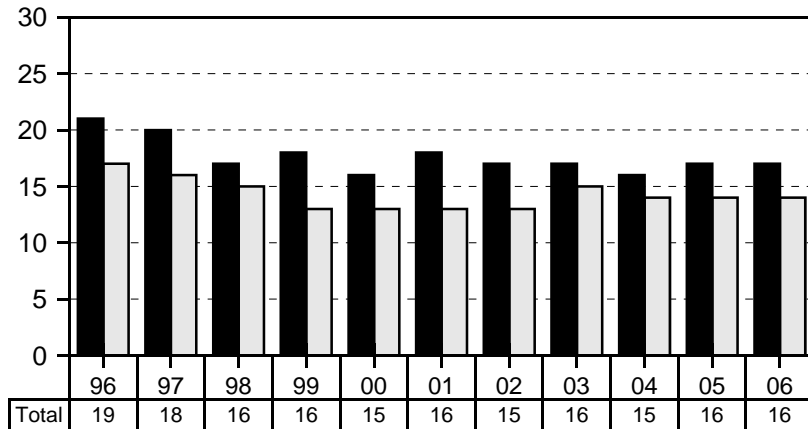
■ General & Pre-Professional □ Career & Technical

Number of Classes



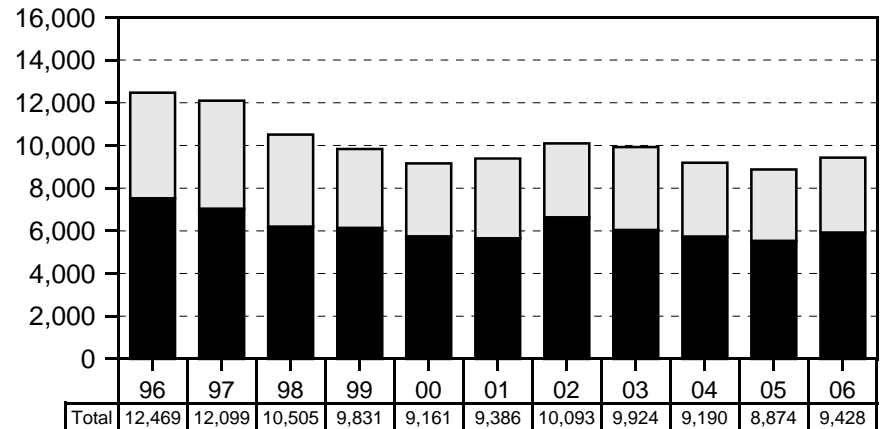
■ General & Pre-Professional □ Career & Technical

Average Class Size



■ General & Pre-Professional □ Career & Technical

Student Semester Hours



■ General & Pre-Professional □ Career & Technical

Table 1
Course Registration Summary, By Course Offering
 Kaua'i Community College
 Fall 2006

COURSE OFFERING	COURSES	CLASSES		SEMESTER HOURS	STUDENT REGIS	STUDENT SEM HRS	COURSE FTE
		No.	Avg Size				
TOTAL	165	204	16	583	3,318	9,428	627
General & Pre-Professional Instr	93	125	17	343	2,167	5,925	394
Humanities	43	64	16	191	1,050	3,153	211
Art	6	6	13	18	95	285	19
English	9	22	18	66	396	1,172	78
Foreign Languages	6	8	11	30	88	344	24
Japanese	2	2	16	8	32	128	9
Spanish	2	3	8	10	23	84	6
Hawaiian	2	3	11	12	33	132	9
Hawaiian Studies	4	3	26	9	78	234	16
History	4	7	19	21	133	399	27
Linguistics	1	1	22	3	22	66	4
Music	7	7	9	14	66	137	9
Philosophy	2	3	17	9	51	153	10
Religion	1	2	13	6	26	78	5
Speech	2	4	20	12	79	237	16
Theatre	1	1	16	3	16	48	3
Natural Sciences	32	42	17	110	742	1,935	128
Biological Sciences	9	9	19	20	173	387	25
Biology	2	2	20	4	40	82	5
Botany	1	1	23	3	23	69	5
Microbiology	2	2	17	5	33	81	5
Zoology	4	4	19	8	77	155	10
Chemistry	2	2	22	4	43	87	6
Mathematics	10	18	18	55	346	1,007	67
Oceanography	1	1	25	3	25	75	5
Physical Sciences	6	6	8	16	49	149	10
Physics	5	5	6	12	30	73	5
Geology & Geophysics	1	1	19	4	19	76	5
Science	4	6	18	12	106	230	15
Social Sciences	7	9	23	27	209	627	41
Anthropology	1	2	10	6	20	60	4
Economics	1	1	17	3	17	51	3
Political Science	1	1	4	3	4	12	1
Psychology	3	4	37	12	146	438	29
Sociology	1	1	22	3	22	66	4
Other Gen Academic	11	10	15	15	166	210	14
Coop Arts & Sciences Ed	1			1	2	2	
Health, Phys Educ & Recreation	6	8	16	8	128	128	9
Interdisciplinary Studies	4	2	11	6	36	80	5
Career & Technical Instr	72	79	14	240	1,151	3,503	233
Business Technologies	26	34	14	95	500	1,339	89
Accounting	6	8	10	21	78	192	13
Business	3	4	19	12	77	231	15
Hospitality & Tourism	4	3	14	10	47	141	9
Information & Computer Sciences	2	6	17	20	104	341	23
Office Admin & Tech	10	12	15	29	183	401	27
Business Technology	10	12	15	29	183	401	27
Sales & Marketing	1	1	11	3	11	33	2
Food Service Tech	8	9	14	35	127	497	33
Food Service	8	9	14	35	127	497	33

COURSE OFFERING	COURSES	CLASSES		SEMESTER HOURS	STUDENT REGIS	STUDENT SEM HRS	COURSE FTE
		No.	Avg Size				
Health Service Tech	10	10	23	32	234	812	54
Nursing	9	9	23	29	209	737	49
Pharmacology	1	1	25	3	25	75	5
Public Service Tech	7	7	8	22	54	164	11
Human Services	7	7	8	22	54	164	11
Education	7	7	8	22	54	164	11
Other Technologies	21	19	12	56	236	691	46
Auto Body Repair & Painting	4	4	18	13	70	240	16
Automotive Mechanics Tech	5	5	9	13	43	119	8
Carpentry	1	1	10	2	10	20	1
Electricity	1	1	10	4	10	40	3
Electronics	9	7	11	22	85	236	16
Welding	1	1	18	2	18	36	2

1/ Number of classes excludes courses with catalog numbers -93 (Cooperative Education) and -99 (Directed Studies). Also excludes Aerospace Studies and Military Science classes.

2/ Semester hours excludes courses with catalog numbers -99 (Directed Studies).

SERIES: Course Registration Report

SOURCE: Banner Operational Data Store (ODS), IRO_SOCAD, IRO_SOCEX

University of Hawai'i, Institutional Research Office

Table 2
Student Semester Hours (SSH) and Course FTE
 Kaua'i Community College
 Fall 2005 to Fall 2006

	Fall 2005			Fall 2006		
	SSH		COURSE	SSH		COURSE
	No.	%Chg	FTE	No.	%Chg	FTE
TOTAL	8,874		592	9,428	6	627
General & Pre-Professional Instr	5,526		368	5,925	7	394
Humanities	3,139		210	3,153	<1	211
Natural Sciences	1,631		107	1,935	19	128
Social Sciences	558		38	627	12	41
Other Gen Academic	198		13	210	6	14
Career & Technical Instr	3,348		224	3,503	5	233
Business Technologies	1,434		95	1,339	-7	89
Food Service Tech	485		32	497	2	33
Health Service Tech	688		46	812	18	54
Public Service Tech	159		11	164	3	11
Other Technologies	582		40	691	19	46

1/ Percent change between -.49 and 0 is noted as (<1). Percent change between -.9 and -.5 is rounded to -1.

SERIES: Course Registration Report

SOURCE: Banner Operational Data Store (ODS), IRO_SOCAD, IRO_SOCEX

University of Hawai'i, Institutional Research Office

© 2005-2008 University of Hawai'i

Table 3
Number of Classes and Average Class Size
 Kaua'i Community College
 Fall 2005 to Fall 2006

	Fall 2005			Fall 2006		
	Classes		Avg	Classes		Avg
	No.	%Chg	Size	No.	%Chg	Size
TOTAL	196		16	204	4	16
General & Pre-Professional Instr	117		17	125	7	17
Humanities	65		16	64	-2	16
Natural Sciences	33		19	42	27	17
Social Sciences	9		21	9	0	23
Other Gen Academic	10		13	10	0	15
Career & Technical Instr	79		14	79	0	14
Business Technologies	35		15	34	-3	14
Food Service Tech	9		14	9	0	14
Health Service Tech	9		22	10	11	23
Public Service Tech	10		6	7	-30	8
Other Technologies	16		12	19	19	12

1/ Excludes courses numbered -93 (Cooperative Education) and -99 (Directed Studies). Also excludes Aerospace Studies and Military Science classes.

2/ Percent change between -.49 and 0 is noted as (<1). Percent change between -.9 and -.5 is rounded to -1.

SERIES: Course Registration Report

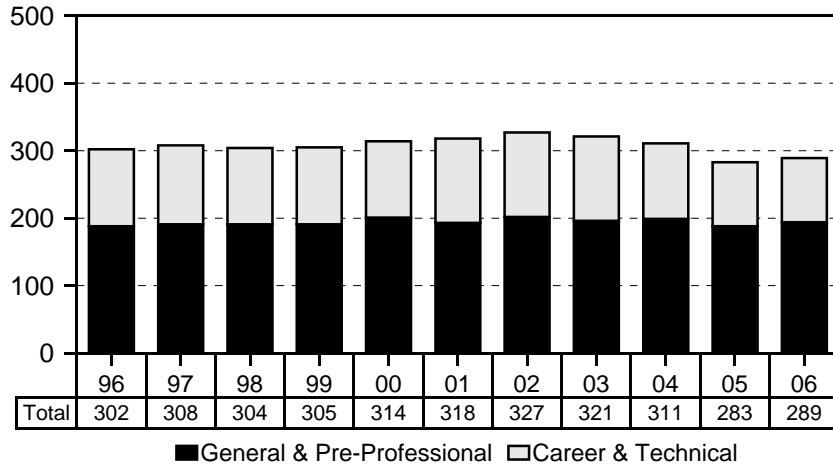
SOURCE: Banner Operational Data Store (ODS), IRO_SOCAD, IRO_SOCEX

University of Hawai'i, Institutional Research Office

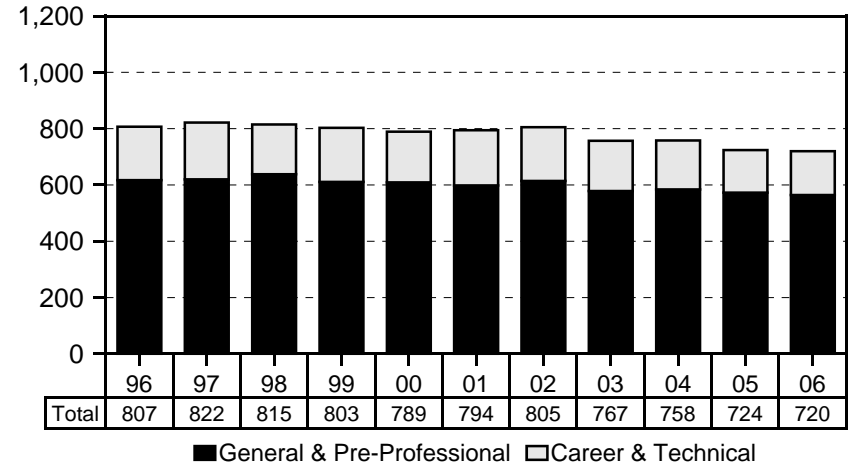
© 2005-2008 University of Hawai'i

Leeward Community College, Fall Semesters

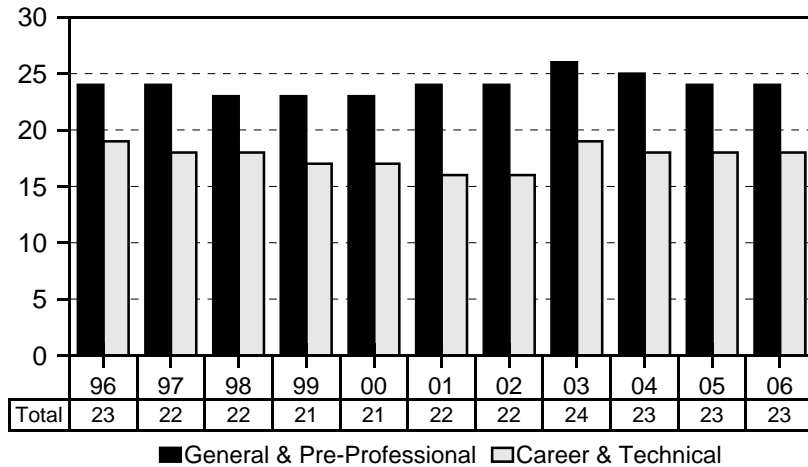
Number of Courses



Number of Classes



Average Class Size



Student Semester Hours

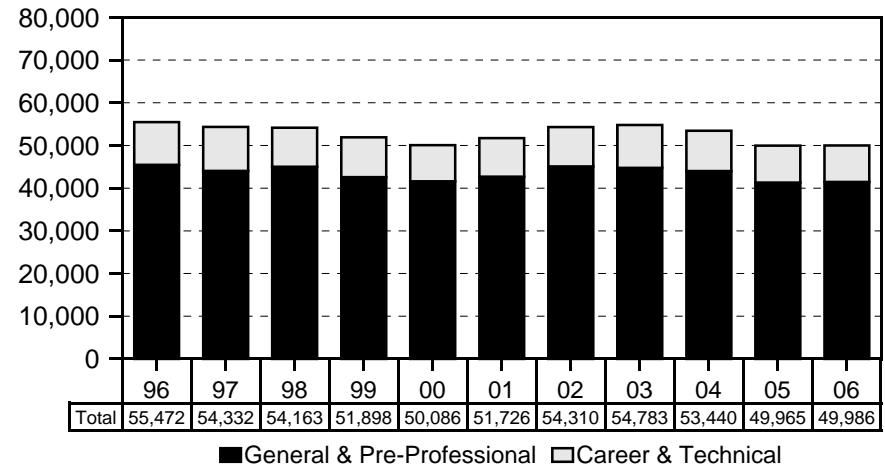


Table 1
Course Registration Summary, By Course Offering
 Leeward Community College
 Fall 2006

COURSE OFFERING	COURSES	CLASSES		SEMESTER HOURS	STUDENT REGIS	STUDENT SEM HRS	COURSE FTE
		No.	Avg Size				
TOTAL	289	720	23	2,186	16,606	49,986	3,336
General & Pre-Professional Instr	194	564	24	1,687	13,806	41,467	2,767
Humanities	110	329	23	988	7,422	22,447	1,497
Art	11	27	25	81	688	2,064	138
Asian Studies	3	4	25	12	101	303	20
Communication	2	3	23	9	69	207	14
Dance	3	5	22	15	111	333	22
Drama & Theatre	5	8	19	24	154	462	31
English	21	126	20	384	2,496	7,612	507
English as a Second Language	10	12	19	36	231	693	46
Foreign Languages	12	26	18	93	460	1,660	111
Japanese	4	11	19	42	208	795	53
Spanish	4	9	16	27	143	429	29
Hawaiian	3	4	18	16	71	284	19
Tagalog	1	2	19	8	38	152	10
Hawaiian Studies	2	11	27	33	295	885	59
History	6	35	31	105	1,069	3,207	214
Journalism	3	2	10	6	22	66	4
Linguistics	1	1	24	3	24	72	5
Music	19	23	14	49	321	740	49
Philosophy	5	15	32	45	478	1,434	96
Religion	5	11	32	33	354	1,062	71
Speech	2	20	27	60	549	1,647	110
Natural Sciences	53	139	25	428	3,515	10,796	721
Biochemistry	2	2	38	6	76	228	15
Biological Sciences	14	26	24	83	634	1,991	134
Biology	6	9	24	28	217	653	44
Botany	3	3	25	8	74	207	14
Microbiology	2	6	29	15	175	459	31
Zoology	3	8	21	32	168	672	45
Chemistry	4	5	20	20	102	408	27
Engineering	4	4	17	13	68	222	15
Civil Engineering	1	1	15	3	15	45	3
Electrical Engineering	2	2	19	7	37	129	9
Mechanical Engineering	1	1	16	3	16	48	3
Mathematics	14	81	26	248	2,108	6,435	429
Oceanography	3	5	26	11	130	340	23
Physical Sciences	9	12	27	31	326	891	59
Astronomy	1	4	36	12	145	435	29
Geology & Geophysics	3	3	29	7	86	226	15
Physics	5	5	19	12	95	230	15
Science	3	4	18	16	71	281	19
Social Sciences	27	88	30	258	2,655	7,881	526
American Studies	2	3	23	9	70	210	14
Anthropology	6	13	25	35	328	944	63
Economics	3	14	30	42	414	1,242	83
Geography	4	9	30	25	271	773	52
Political Science	3	8	31	24	248	742	49
Psychology	4	29	32	87	945	2,835	189
Social Sciences	2	3	24	9	74	220	15
Sociology	2	8	34	24	275	825	55

COURSE OFFERING	COURSES	CLASSES		SEMESTER HOURS	STUDENT REGIS	STUDENT SEM HRS	COURSE FTE
		No.	Avg Size				
Women's Studies	1	1	30	3	30	90	6
Other Gen Academic	4	8	26	13	214	343	23
Interdisciplinary Studies	4	8	26	13	214	343	23
Career & Technical Instr	95	156	18	499	2,800	8,519	569
Business Technologies	41	89	18	263	1,650	4,814	322
Accounting	8	19	22	57	419	1,257	84
Business	3	17	18	51	307	921	61
Finance	1	1	9	3	9	27	2
Information & Computer Sciences	11	24	18	72	438	1,314	88
Management	3	6	17	18	99	297	20
Marketing	1	1	14	3	14	42	3
Office Admin & Tech	14	21	16	59	364	956	64
Business Technology	14	21	16	59	364	956	64
Food Service Tech	14	15	13	59	211	656	44
Food Service	14	15	13	59	211	656	44
Health Service Tech	3	4	32	12	128	384	25
Food Science & Human Nutrition	2	3	24	9	72	216	14
Pharmacology	1	1	56	3	56	168	11
Public Service Tech	10	19	17	57	322	966	65
Human Services	10	19	17	57	322	966	65
Education	4	7	16	21	114	342	23
Human Services	5	9	16	27	148	444	30
Law	1	3	20	9	60	180	12
Other Technologies	27	29	16	108	489	1,699	113
Automotive Mechanics Tech	12	13	13	59	182	762	51
Digital Media	9	10	22	30	215	645	43
Horticulture	1	1	16	4	16	64	4
Television Production	5	5	15	15	76	228	15

1/ Number of classes excludes courses with catalog numbers -93 (Cooperative Education) and -99 (Directed Studies). Also excludes Aerospace Studies and Military Science classes.

2/ Semester hours excludes courses with catalog numbers -99 (Directed Studies).

SERIES: Course Registration Report

SOURCE: Banner Operational Data Store (ODS), IRO_SOCAD, IRO_SOCEX

University of Hawai'i, Institutional Research Office

Table 2
Student Semester Hours (SSH) and Course FTE
 Leeward Community College
 Fall 2005 to Fall 2006

	Fall 2005			Fall 2006		
	SSH		COURSE	SSH		COURSE
	No.	%Chg	FTE	No.	%Chg	FTE
TOTAL	49,965		3,326	49,986	<1	3,336
General & Pre-Professional Instr	41,324		2,751	41,467	<1	2,767
Humanities	22,269		1,481	22,447	1	1,497
Natural Sciences	10,813		720	10,796	(<1)	721
Social Sciences	7,944		530	7,881	-1	526
Other Gen Academic	298		20	343	15	23
Career & Technical Instr	8,641		575	8,519	-1	569
Business Technologies	5,333		355	4,814	-10	322
Food Service Tech	535		36	656	23	44
Health Service Tech	321		21	384	20	25
Public Service Tech	804		53	966	20	65
Other Technologies	1,648		110	1,699	3	113

1/ Percent change between -.49 and 0 is noted as (<1). Percent change between -.9 and -.5 is rounded to -1.

SERIES: Course Registration Report
 SOURCE: Banner Operational Data Store (ODS), IRO_SOCAD

University of Hawai'i, Institutional Research Office

© 2005-2008 University of Hawai'i

Table 3
Number of Classes and Average Class Size
 Leeward Community College
 Fall 2005 to Fall 2006

	Fall 2005			Fall 2006		
	Classes		Avg	Classes		Avg
	No.	%Chg	Size	No.	%Chg	Size
TOTAL	724		23	720	-1	23
General & Pre-Professional Instr	573		24	564	-2	24
Humanities	333		22	329	-1	23
Natural Sciences	145		24	139	-4	25
Social Sciences	87		31	88	1	30
Other Gen Academic	8		24	8	0	26
Career & Technical Instr	151		18	156	3	18
Business Technologies	93		19	89	-4	18
Food Service Tech	9		16	15	67	13
Health Service Tech	5		21	4	-20	32
Public Service Tech	14		19	19	36	17
Other Technologies	30		15	29	-3	16

1/ Excludes courses numbered -93 (Cooperative Education) and -99 (Directed Studies). Also excludes Aerospace Studies and Military Science classes.

2/ Percent change between -.49 and 0 is noted as (<1). Percent change between -.9 and -.5 is rounded to -1.

SERIES: Course Registration Report

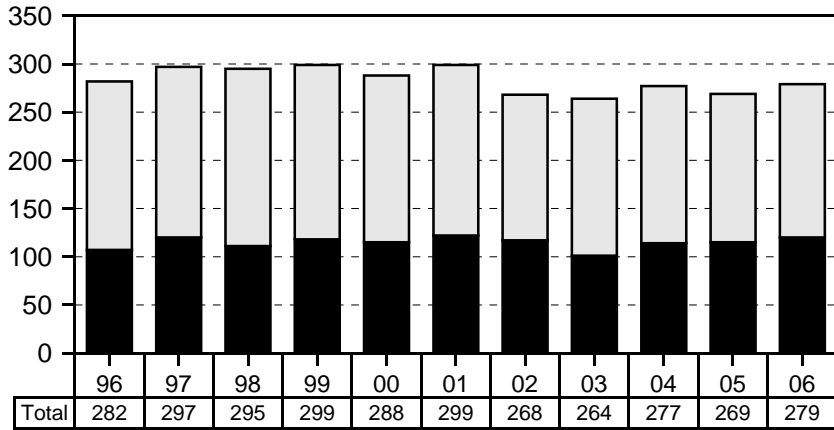
SOURCE: Banner Operational Data Store (ODS), IRO_SOCAD

University of Hawai'i, Institutional Research Office

© 2005-2008 University of Hawai'i

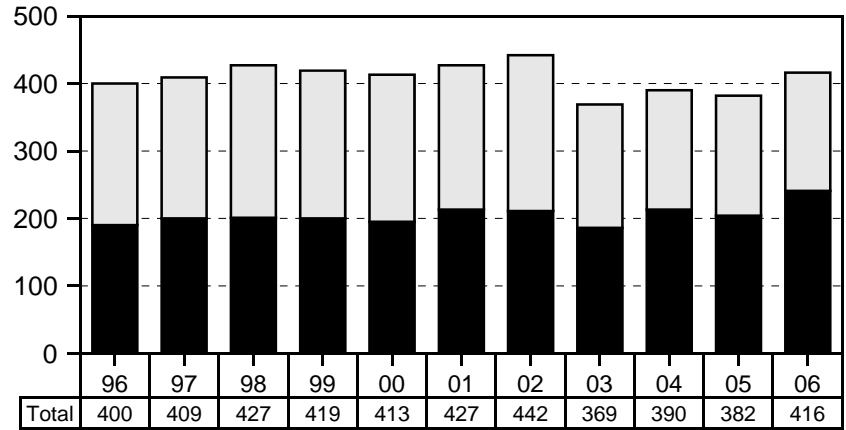
Maui Community College, Fall Semesters

Number of Courses



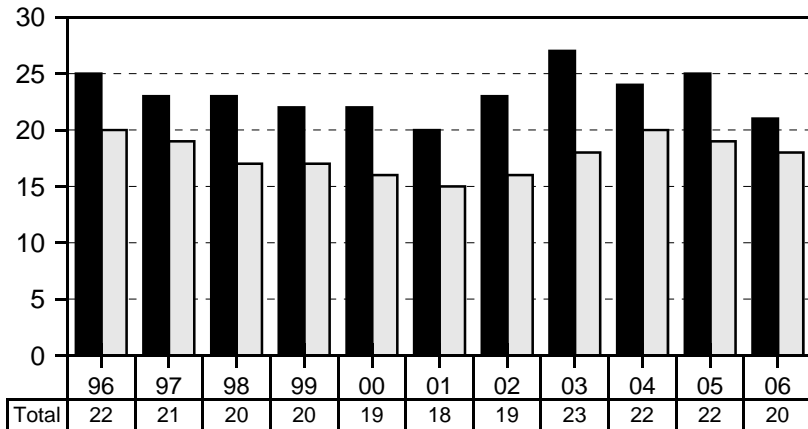
■ General & Pre-Professional □ Career & Technical

Number of Classes



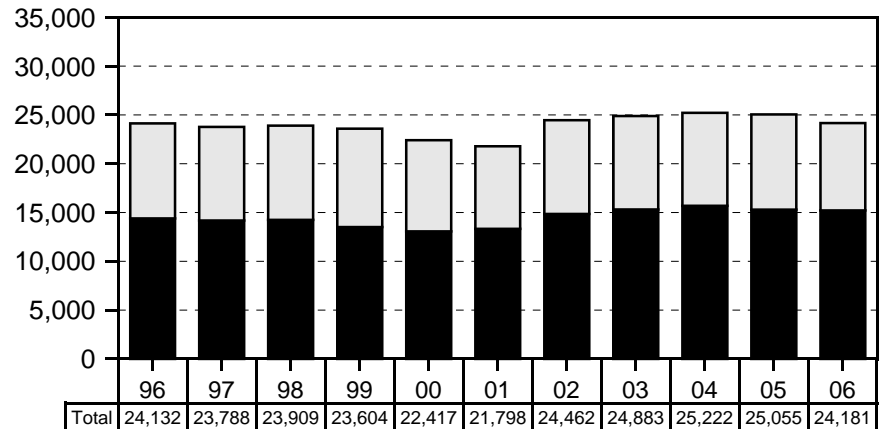
■ General & Pre-Professional □ Career & Technical

Average Class Size



■ General & Pre-Professional □ Career & Technical

Student Semester Hours



■ General & Pre-Professional □ Career & Technical

Table 1
Course Registration Summary, By Course Offering
 Maui Community College
 Fall 2006

COURSE OFFERING	COURSES	CLASSES		SEMESTER HOURS	STUDENT REGIS	STUDENT SEM HRS	COURSE FTE
		No.	Avg Size				
TOTAL	279	416	20	1,228	8,201	24,181	1,609
Lower Division	269	407	20	1,203	8,112	23,936	1,593
Upper Division	10	9	10	25	89	245	16
General & Pre-Professional Instr	120	241	21	723	5,020	15,228	1,013
Lower Division	118	239	21	717	4,993	15,147	1,008
Upper Division	2	2	14	6	27	81	5
Humanities	53	120	21	359	2,475	7,497	500
Lower Division	51	118	21	353	2,448	7,416	495
Upper Division	2	2	14	6	27	81	5
Art	6	7	21	15	145	333	22
Communication	3	6	22	18	130	390	26
Lower Division	2	5	22	15	110	330	22
Upper Division	1	1	20	3	20	60	4
Drama & Theatre	2	3	15	9	44	132	9
English	12	52	19	156	986	2,958	197
Foreign Languages	8	16	18	58	280	1,067	71
Japanese	2	3	16	12	48	192	13
Spanish	3	7	17	23	122	450	30
Hawaiian	3	6	18	23	110	425	28
Hawaiian Studies	4	9	23	23	206	579	39
History	5	9	30	27	271	813	54
Humanities	1	3	35	9	104	312	21
Journalism	1	1	9	3	9	27	2
Music	5	4	25	11	98	280	19
Philosophy	3	4	19	12	77	231	15
Lower Division	2	3	23	9	70	210	14
Upper Division	1	1	7	3	7	21	1
Religion	1	1	28	3	28	84	6
Speech	2	5	19	15	97	291	19
Natural Sciences	43	73	20	234	1,486	4,777	317
Biochemistry	1	1	22	3	22	66	4
Biological Sciences	9	23	23	83	524	1,883	125
Biology	5	9	26	30	235	767	51
Botany	1	4	23	12	91	273	18
Microbiology	1	1	51	5	51	255	17
Zoology	2	9	16	36	147	588	39
Chemistry	3	3	16	8	49	119	8
Mathematics	19	34	20	107	674	2,085	139
Oceanography	6	5	14	10	73	167	11
Physical Sciences	4	5	23	15	116	345	23
Astronomy	2	3	30	7	91	245	16
Physics	2	2	13	8	25	100	7
Science	1	2	14	8	28	112	7
Social Sciences	17	36	25	109	888	2,677	178
Anthropology	3	6	27	18	162	486	32
Economics	3	4	28	12	111	333	22
Family Resources	1	2	15	6	29	87	6
Geography	2	3	20	9	61	183	12
Political Science	2	3	18	9	53	159	11
Psychology	5	12	27	37	322	979	65
Sociology	1	6	25	18	150	450	30

COURSE OFFERING	COURSES	CLASSES		SEMESTER HOURS	STUDENT REGIS	STUDENT SEM HRS	COURSE FTE
		No.	Avg Size				
Other Gen Academic	7	12	14	21	171	277	18
Coop Arts & Sciences Ed	1			2	3	7	
Interdisciplinary Studies	4	10	15	13	145	201	13
Learning Skills	2	2	12	6	23	69	5
Career & Technical Instr	159	175	18	505	3,181	8,953	596
Lower Division	151	168	18	486	3,119	8,789	585
Upper Division	8	7	9	19	62	164	11
Business Technologies	46	58	18	177	1,062	3,163	211
Lower Division	38	51	19	158	1,000	2,999	200
Upper Division	8	7	9	19	62	164	11
Accounting	8	9	21	28	194	582	39
Lower Division	7	8	23	25	184	552	37
Upper Division	1	1	10	3	10	30	2
Business	5	3	28	8	86	236	16
Lower Division	3	2	36	7	73	219	15
Upper Division	2	1	11	1	13	17	1
Business Law	1	1	31	3	31	93	6
Hospitality & Tourism	6	4	15	14	68	204	14
Information & Computer Sciences	8	14	17	44	239	736	49
Lower Division	5	11	20	35	216	667	44
Upper Division	3	3	8	9	23	69	5
Management	3	4	18	12	72	216	14
Lower Division	2	3	20	9	60	180	12
Upper Division	1	1	12	3	12	36	2
Marketing	2	2	16	6	31	93	6
Lower Division	1	1	27	3	27	81	5
Upper Division	1	1	4	3	4	12	1
Office Admin & Tech	13	21	16	62	341	1,003	67
Business Technology	13	21	16	62	341	1,003	67
Food Service Tech	18	34	15	83	521	1,161	77
Food Service	18	34	15	83	521	1,161	77
Health Service Tech	25	26	30	65	782	2,282	153
Dental Assisting	5	5	12	15	58	174	12
Food Science & Human Nutrition	1	2	46	6	91	273	18
Health	1	1	10	1	10	10	1
Nursing	13	13	39	34	506	1,496	100
Pharmacology	5	5	23	9	117	329	22
Public Service Tech	18	17	14	60	256	768	51
Administration of Justice	4	4	13	12	51	153	10
Human Services	13	12	15	47	196	606	40
Education	7	7	14	24	98	307	20
Human Services	6	5	17	23	98	299	20
Occupational Safety & Health	1	1	9	1	9	9	1
Other Technologies	52	40	13	120	560	1,579	104
Agriculture	9	8	10	22	85	228	15
Auto Body Repair & Painting	10	5	14	10	71	142	9
Automotive Mechanics Tech	10	9	16	30	141	461	31
Blueprint Reading	1	1	11	3	11	33	2
Carpentry	2	1	13	4	15	43	3
Electricity	3	3	14	7	41	96	6
COURSE OFFERING	COURSES	CLASSES		SEMESTER HOURS	STUDENT REGIS	STUDENT SEM HRS	COURSE FTE
		No.	Avg Size				
Electronics	5	3	19	15	61	215	14
Energy	2	1	7	5	15	37	2
Fashion Technology	5	5	17	15	83	249	17
Maintenance	4	4	9	8	36	72	5
Welding	1			1	1	3	

1/ Number of classes excludes courses with catalog numbers -93 (Cooperative Education) and -99 (Directed Studies). Also excludes Aerospace Studies and Military Science classes.

2/ Semester hours excludes courses with catalog numbers -99 (Directed Studies).

SERIES: Course Registration Report

SOURCE: Banner Operational Data Store (ODS), IRO_SOCAD, IRO_SOCEX

University of Hawai'i, Institutional Research Office

© 2005-2008 University of Hawai'i

Table 2
Student Semester Hours (SSH) and Course FTE
 Maui Community College
 Fall 2005 to Fall 2006

	Fall 2005			Fall 2006		
	SSH		COURSE	SSH		COURSE
	No.	%Chg	FTE	No.	%Chg	FTE
TOTAL	25,055		1,672	24,181	-3	1,609
Lower Division	24,882		1,660	23,936	-4	1,593
Upper Division	173		12	245	42	16
General & Pre-Professional Instr	15,305		1,022	15,228	-1	1,013
Lower Division	15,305		1,022	15,147	-1	1,008
Upper Division				81		5
Humanities	7,559		505	7,497	-1	500
Lower Division	7,559		505	7,416	-2	495
Upper Division				81		5
Natural Sciences	4,757		318	4,777	<1	317
Social Sciences	2,770		184	2,677	-3	178
Other Gen Academic	219		15	277	26	18
Career & Technical Instr	9,750		650	8,953	-8	596
Lower Division	9,577		638	8,789	-8	585
Upper Division	173		12	164	-5	11
Business Technologies	3,775		252	3,163	-16	211
Lower Division	3,602		240	2,999	-17	200
Upper Division	173		12	164	-5	11
Food Service Tech	1,198		80	1,161	-3	77
Health Service Tech	2,382		158	2,282	-4	153
Public Service Tech	865		58	768	-11	51
Other Technologies	1,526		102	1,579	3	104
Other Occup/Voc	4		< .5			

1/ Percent change between -.49 and 0 is noted as (<1). Percent change between -.9 and -.5 is rounded to -1.

SERIES: Course Registration Report
 SOURCE: Banner Operational Data Store (ODS), IRO_SOCAD

University of Hawai'i, Institutional Research Office

© 2005-2008 University of Hawai'i

Table 3
Number of Classes and Average Class Size
 Maui Community College
 Fall 2005 to Fall 2006

	Fall 2005			Fall 2006		
	Classes		Avg	Classes		Avg
	No.	%Chg	Size	No.	%Chg	Size
TOTAL	382		22	416	9	20
Lower Division	375		22	407	9	20
Upper Division	7		10	9	29	10
General & Pre-Professional Instr	204		25	241	18	21
Lower Division	204		25	239	17	21
Upper Division				2		14
Humanities	108		23	120	11	21
Lower Division	108		23	118	9	21
Upper Division				2		14
Natural Sciences	60		25	73	22	20
Social Sciences	30		31	36	20	25
Other Gen Academic	6		17	12	100	14
Career & Technical Instr	178		19	175	-2	18
Lower Division	171		20	168	-2	18
Upper Division	7		10	7	0	9
Business Technologies	62		21	58	-6	18
Lower Division	55		22	51	-7	19
Upper Division	7		10	7	0	9
Food Service Tech	34		15	34	0	15
Health Service Tech	26		33	26	0	30
Public Service Tech	20		15	17	-15	14
Other Technologies	36		14	40	11	13

1/ Excludes courses numbered -93 (Cooperative Education) and -99 (Directed Studies). Also excludes Aerospace Studies and Military Science classes.

2/ Percent change between -.49 and 0 is noted as (<1). Percent change between -.9 and -.5 is rounded to -1.

SERIES: Course Registration Report

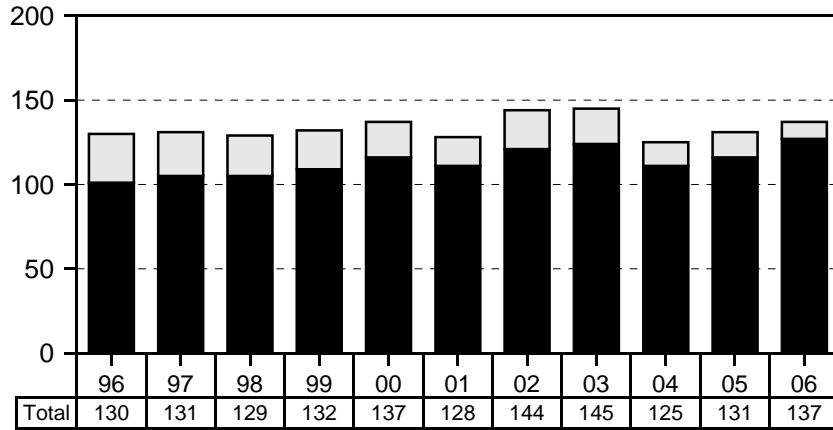
SOURCE: Banner Operational Data Store (ODS), IRO_SOCAD

University of Hawai'i, Institutional Research Office

© 2005-2008 University of Hawai'i

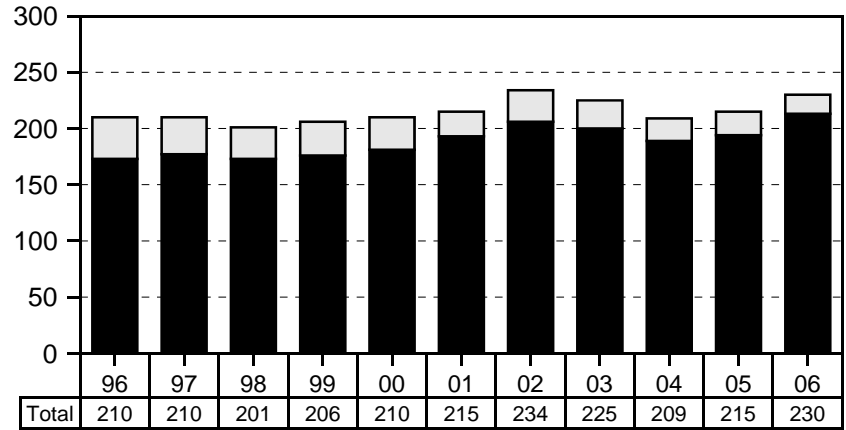
Windward Community College, Fall Semesters

Number of Courses



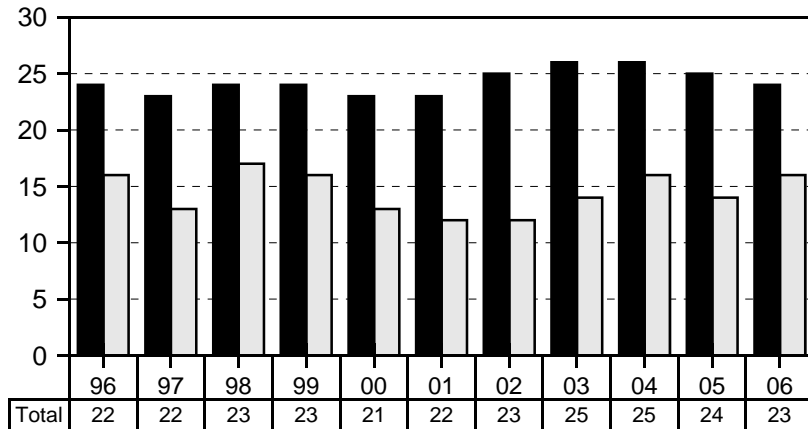
■ General & Pre-Professional □ Career & Technical

Number of Classes



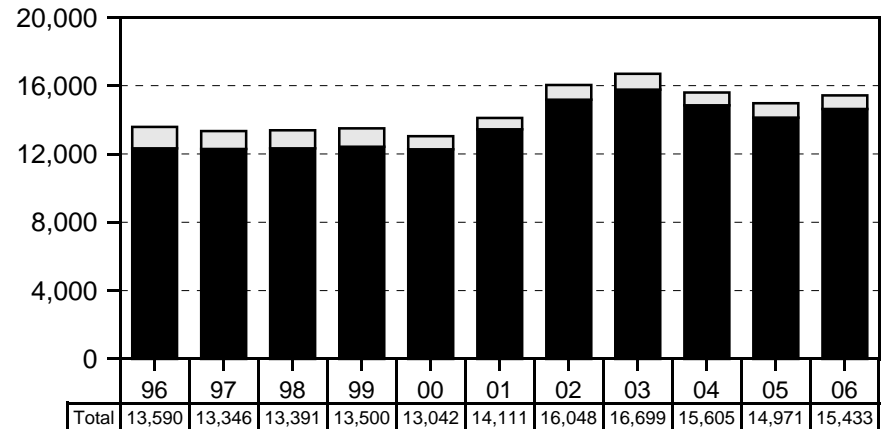
■ General & Pre-Professional □ Career & Technical

Average Class Size



■ General & Pre-Professional □ Career & Technical

Student Semester Hours



■ General & Pre-Professional □ Career & Technical

Table 1
Course Registration Summary, By Course Offering
 Windward Community College
 Fall 2006

COURSE OFFERING	COURSES	CLASSES		SEMESTER HOURS	STUDENT REGIS	STUDENT SEM HRS	COURSE FTE
		No.	Avg Size				
TOTAL	137	230	23	655	5,338	15,433	1,028
General & Pre-Professional Instr	127	213	24	608	5,058	14,635	976
Humanities	61	107	23	318	2,449	7,366	492
Art	14	17	20	51	344	1,032	69
Communication	1	2	28	6	55	165	11
English	9	27	23	81	625	1,871	125
Foreign Languages	6	10	16	39	161	624	41
Japanese	1	2	16	8	31	124	8
Spanish	2	3	18	11	55	200	13
Hawaiian	3	5	15	20	75	300	20
Hawaiian Studies	1	4	36	12	143	429	29
History	4	15	32	45	481	1,443	96
Journalism	2	2	10	3	19	54	4
Linguistics	1	1	6	3	6	18	1
Music	8	7	15	12	104	197	13
Philosophy	5	7	30	21	209	627	42
Religion	4	5	21	15	104	312	21
Speech	2	6	22	18	134	402	27
Theatre	4	4	16	12	64	192	13
Natural Sciences	42	69	23	178	1,572	4,240	283
Biological Sciences	13	21	24	49	496	1,205	80
Biology	5	7	23	15	163	365	24
Botany	4	3	18	10	55	185	12
Microbiology	2	4	25	11	98	271	18
Zoology	2	7	26	13	180	384	26
Chemistry	5	7	20	15	137	331	22
Geographic Information System	1	1	18	3	18	54	4
Mathematics	12	26	25	81	640	1,969	131
Meteorology	1	1	28	3	28	84	6
Oceanography	3	2	15	4	32	72	5
Physical Sciences	7	11	20	23	221	525	35
Astronomy	2	6	24	14	143	365	24
Geology & Geophysics	3	3	14	5	43	89	6
Physics	2	2	18	4	35	71	5
Social Sciences	20	33	29	102	971	2,863	190
Anthropology	2	3	35	9	104	312	21
Economics	2	5	32	15	160	480	32
Geography	3	4	26	10	105	275	18
Political Science	3	5	20	15	102	306	20
Psychology	6	11	28	33	311	933	62
Social Sciences	2			5	27	71	5
Sociology	2	5	32	15	162	486	32
Other Gen Academic	4	4	17	10	66	166	11
Interdisciplinary Studies	3	3	19	6	57	130	9
Learning Skills	1	1	9	4	9	36	2
Career & Technical Instr	10	17	16	47	280	798	52
Business Technologies	5	12	18	34	217	623	41
Accounting	1	2	28	6	56	168	11
Information & Computer Sciences	3	9	16	27	147	441	29
Office Admin & Tech	1	1	14	1	14	14	1
Business Technology	1	1	14	1	14	14	1

COURSE OFFERING	COURSES	CLASSES		SEMESTER HOURS	STUDENT REGIS	STUDENT SEM HRS	COURSE FTE
		No.	Avg Size				
Health Service Tech	1	1	36	3	36	108	7
Food Science & Human Nutrition	1	1	36	3	36	108	7
Other Technologies	4	4	7	10	27	67	4
Agriculture	4	4	7	10	27	67	4

1/ Number of classes excludes courses with catalog numbers -93 (Cooperative Education) and -99 (Directed Studies). Also excludes Aerospace Studies and Military Science classes.

2/ Semester hours excludes courses with catalog numbers -99 (Directed Studies).

SERIES: Course Registration Report

SOURCE: Banner Operational Data Store (ODS), IRO_SOCAD, IRO_SOCEX

University of Hawai'i, Institutional Research Office

Table 2
Student Semester Hours (SSH) and Course FTE
Windward Community College
Fall 2005 to Fall 2006

	Fall 2005			Fall 2006		
	SSH		COURSE	SSH		COURSE
	No.	%Chg	FTE	No.	%Chg	FTE
TOTAL	14,971		1,000	15,433	3	1,028
General & Pre-Professional Instr	14,133		944	14,635	4	976
Humanities	6,908		462	7,366	7	492
Natural Sciences	4,035		268	4,240	5	283
Social Sciences	3,122		209	2,863	-8	190
Other Gen Academic	68		5	166	144	11
Career & Technical Instr	838		56	798	-5	52
Business Technologies	690		46	623	-10	41
Health Service Tech				108		7
Other Technologies	148		10	67	-55	4

1/ Percent change between -.49 and 0 is noted as (<1). Percent change between -.9 and -.5 is rounded to -1.

SERIES: Course Registration Report
SOURCE: Banner Operational Data Store (ODS), IRO_SOCAD

University of Hawai'i, Institutional Research Office

© 2005-2008 University of Hawai'i

Table 3
Number of Classes and Average Class Size
Windward Community College
Fall 2005 to Fall 2006

	Fall 2005			Fall 2006		
	Classes		Avg	Classes		Avg
	No.	%Chg	Size	No.	%Chg	Size
TOTAL	215		24	230	7	23
General & Pre-Professional Instr	194		25	213	10	24
Humanities	99		23	107	8	23
Natural Sciences	59		24	69	17	23
Social Sciences	35		29	33	-6	29
Other Gen Academic	1		17	4	300	17
Career & Technical Instr	21		14	17	-19	16
Business Technologies	14		17	12	-14	18
Health Service Tech				1		36
Other Technologies	7		8	4	-43	7

1/ Excludes courses numbered -93 (Cooperative Education) and -99 (Directed Studies). Also excludes Aerospace Studies and Military Science classes.

2/ Percent change between -.49 and 0 is noted as (<1). Percent change between -.9 and -.5 is rounded to -1.

SERIES: Course Registration Report

SOURCE: Banner Operational Data Store (ODS), IRO_SOCAD

University of Hawai'i, Institutional Research Office

© 2005-2008 University of Hawai'i