

COURSE REGISTRATION REPORT

UNIVERSITY OF HAWAI'I AT HILO

FALL 2004

Institutional Research Office

University of Hawai'i

February 2005

File Reference: Management and Planning Support Folder, Courses

Reports available online at: [http:// www.hawaii.edu/iro/maps.htm](http://www.hawaii.edu/iro/maps.htm)

University of Hawai'i at Hilo - Fall Semesters

Figure 1
Number of Classes

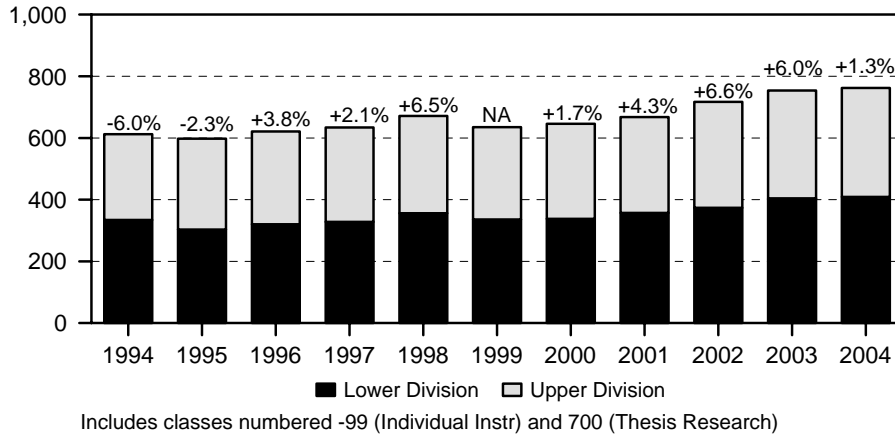


Figure 2
Student Registrations

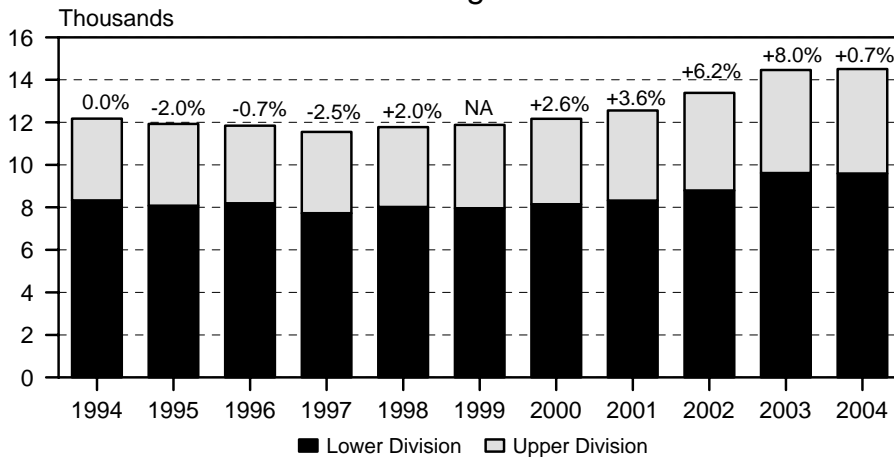
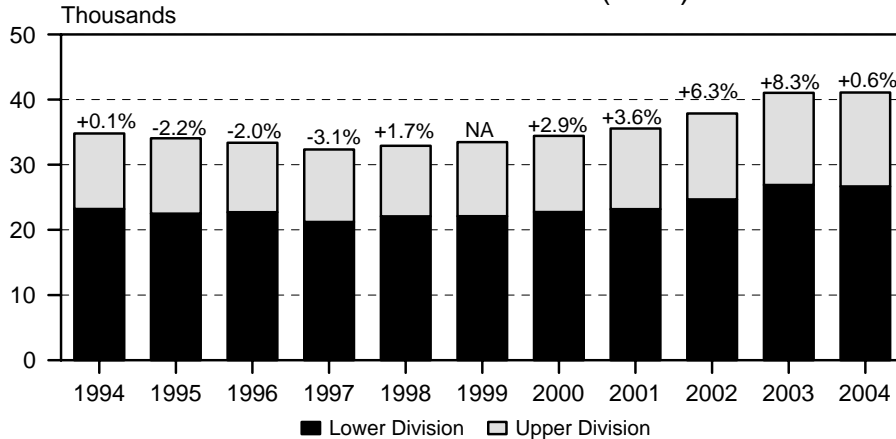


Figure 3
Student Semester Hours (SSH)



NOTE: Graduate level data are not shown in figures 1 to 3 due to small numbers.
Beginning Fall 1999, includes continuing education classes. Therefore percent changes for Fall 1999 are not comparable with prior year.

University of Hawai'i at Hilo - Fall Semesters

Figure 4
Course FTE

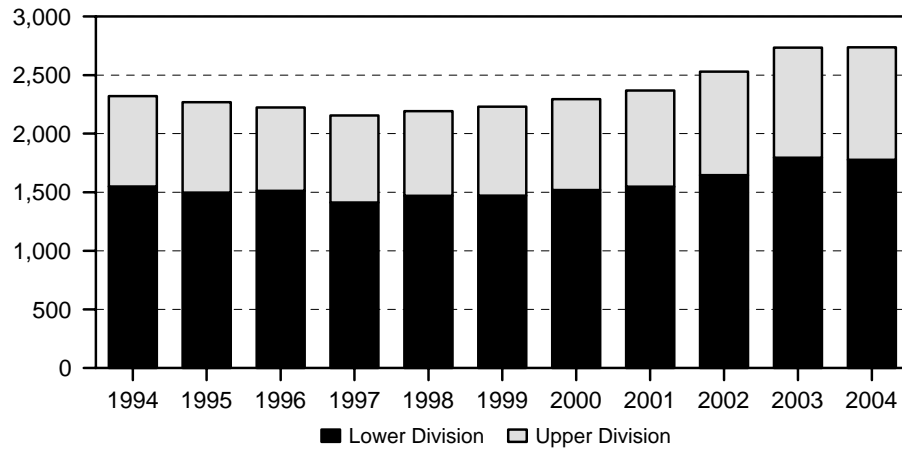


Figure 5
Average Class Size

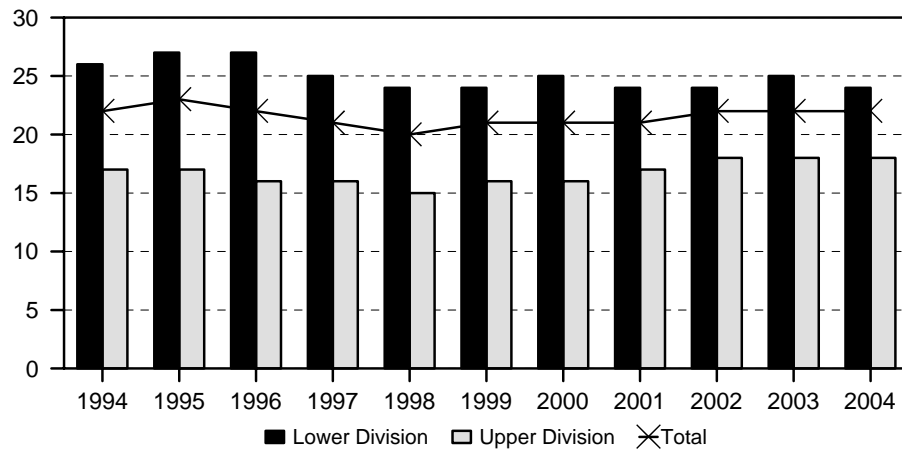
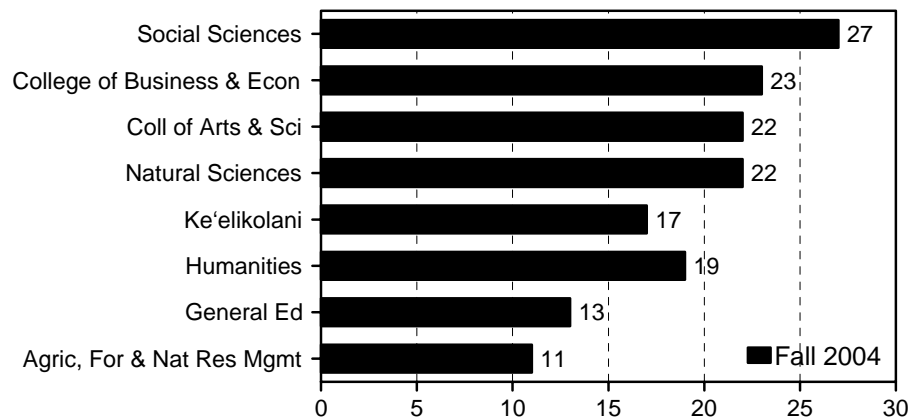


Figure 6
Average Class Size, by College / Area



NOTE: Graduate level data are not shown in figures 4 and 5 due to small numbers.

TABLE 1
 COURSE REGISTRATION SUMMARY, BY COURSE LEVEL
 UNIVERSITY OF HAWAII AT HILO
 FALL 2000 TO FALL 2004

| COURSE LEVEL | COURSES | | CLASSES 1/ | | SEMESTER HOURS | | STUDENT REGISTRATIONS | | STUDENT SEMESTER HRS | |
|-----------------|---------|-------|------------|-------|----------------|-------|-----------------------|-------|----------------------|-------|
| | No. | %Chg | No | %Chg | No. | %Chg | No. | %Chg | No. | %Chg |
| FALL 2000 TOTAL | 444 | 0.5 | 649 | 1.7 | 1,590 | 1.9 | 12,214 | 2.6 | 34,512 | 2.9 |
| 100-199 | 113 | -1.7 | 237 | 1.3 | 604 | 2.4 | 6,202 | 2.4 | 17,096 | 3.4 |
| 200-299 | 77 | 0.0 | 101 | -1.0 | 265 | -3.6 | 1,942 | 2.2 | 5,646 | 1.7 |
| 300-499 | 251 | 1.6 | 308 | 3.0 | 717 | 4.4 | 4,025 | 2.7 | 11,678 | 2.7 |
| 500-800 | 3 | 0.0 | 3 | 0.0 | 4 | -55.6 | 45 | 60.7 | 92 | 9.5 |
| FALL 2001 TOTAL | 473 | 6.5 | 677 | 4.3 | 1,655 | 4.1 | 12,659 | 3.6 | 35,771 | 3.6 |
| 100-199 | 120 | 6.2 | 243 | 2.5 | 622 | 3.0 | 6,177 | -0.4 | 16,934 | -0.9 |
| 200-299 | 88 | 14.3 | 114 | 12.9 | 294 | 10.9 | 2,143 | 10.4 | 6,255 | 10.8 |
| 300-499 | 256 | 2.0 | 311 | 1.0 | 718 | 0.1 | 4,240 | 5.3 | 12,365 | 5.9 |
| 500-800 | 9 | 200.0 | 9 | 200.0 | 21 | 425.0 | 99 | 120.0 | 217 | 135.9 |
| FALL 2002 TOTAL | 474 | 0.2 | 722 | 6.6 | 1,681 | 1.6 | 13,442 | 6.2 | 38,010 | 6.3 |
| 0-99 | 4 | | 5 | | 15 | | 85 | | 255 | |
| 100-199 | 118 | -1.7 | 250 | 2.9 | 641 | 3.1 | 6,224 | 0.8 | 17,168 | 1.4 |
| 200-299 | 85 | -3.4 | 119 | 4.4 | 321 | 9.2 | 2,486 | 16.0 | 7,246 | 15.8 |
| 300-499 | 262 | 2.3 | 343 | 10.3 | 691 | -3.8 | 4,587 | 8.2 | 13,195 | 6.7 |
| 500-800 | 5 | -44.4 | 5 | -44.4 | 13 | -38.1 | 60 | -39.4 | 146 | -32.7 |
| FALL 2003 TOTAL | 485 | 2.3 | 765 | 6.0 | 1,802 | 7.2 | 14,523 | 8.0 | 41,169 | 8.3 |
| 0-99 | 12 | 200.0 | 14 | 180.0 | 42 | 180.0 | 246 | 189.4 | 738 | 189.4 |
| 100-199 | 115 | -2.5 | 257 | 2.8 | 654 | 2.0 | 6,682 | 7.4 | 18,398 | 7.2 |
| 200-299 | 85 | 0.0 | 133 | 11.8 | 351 | 9.3 | 2,687 | 8.1 | 7,768 | 7.2 |
| 300-499 | 265 | 1.1 | 350 | 2.0 | 744 | 7.7 | 4,846 | 5.6 | 14,128 | 7.1 |
| 500-800 | 8 | 60.0 | 11 | 120.0 | 11 | -15.4 | 62 | 3.3 | 137 | -6.2 |
| FALL 2004 TOTAL | 505 | 4.1 | 775 | 1.3 | 1,864 | 3.4 | 14,628 | 0.7 | 41,408 | 0.6 |
| 0-99 | 12 | 0.0 | 15 | 7.1 | 45 | 7.1 | 280 | 13.8 | 840 | 13.8 |
| 100-199 | 114 | -0.9 | 259 | 0.8 | 656 | 0.3 | 6,677 | -0.1 | 18,213 | -1.0 |
| 200-299 | 87 | 2.4 | 135 | 1.5 | 353 | 0.6 | 2,635 | -1.9 | 7,617 | -1.9 |
| 300-499 | 279 | 5.3 | 353 | 0.9 | 784 | 5.4 | 4,908 | 1.3 | 14,404 | 2.0 |
| 500-800 | 13 | 62.5 | 13 | 18.2 | 26 | 136.4 | 128 | 106.5 | 334 | 143.8 |

1/ Includes classes numbered -99 (individual instruction) and 700 (thesis research).

SOURCE: Computer Report 3011: "Course Registration Summary Report."

TABLE 2
 COURSE REGISTRATION AND AVERAGE CLASS SIZE SUMMARY
 UNIVERSITY OF HAWAII AT HILO
 FALL 2004

| COURSE OFFERING AND LEVEL | COURSES | CLASSES 1/ | | SEM HRS | STUD REGIS | STUDENT SEM HRS | COURSE FTE |
|--|---------|------------|----------|------------|---------------|--------------------|---------------|
| | | No. | Avg Size | | | | |
| TOTAL..... | 505 | 671 | 22 | 1,864 | 14,628 | 41,408 | 2,763 |
| Lower Division..... | 213 | 396 | 24 | 1,054 | 9,592 | 26,670 | 1,776 |
| Upper Division..... | 279 | 264 | 18 | 784 | 4,908 | 14,404 | 961 |
| Graduate Level..... | 13 | 11 | 11 | 26 | 128 | 334 | 26 |
| COLL OF AGRIC, FOR & NAT RES MGMT..... | 36 | 35 | 11 | 105 | 399 | 1,171 | 78 |
| Lower Division..... | 15 | 15 | 14 | 43 | 212 | 579 | 38 |
| Upper Division..... | 21 | 20 | 9 | 62 | 187 | 592 | 40 |
| Agriculture..... | 7 | 5 | 15 | 13 | 85 | 198 | 13 |
| Lower Division..... | 5 | 4 | 15 | 10 | 64 | 135 | 9 |
| Upper Division..... | 2 | 1 | 15 | 3 | 21 | 63 | 4 |
| Agricultural Business..... | 2 | 2 | 8 | 6 | 15 | 45 | 3 |
| Lower Division..... | 2 | 2 | 8 | 6 | 15 | 45 | 3 |
| Agricultural Economics..... | 3 | 3 | 7 | 9 | 22 | 66 | 4 |
| Lower Division..... | 1 | 1 | 11 | 3 | 11 | 33 | 2 |
| Upper Division..... | 2 | 2 | 6 | 6 | 11 | 33 | 2 |
| Agricultural Engineering..... | 3 | 3 | 12 | 10 | 35 | 118 | 8 |
| Lower Division..... | 1 | 1 | 16 | 3 | 16 | 48 | 3 |
| Upper Division..... | 2 | 2 | 10 | 7 | 19 | 70 | 5 |
| Agronomy..... | 1 | 1 | 8 | 3 | 8 | 24 | 2 |
| Upper Division..... | 1 | 1 | 8 | 3 | 8 | 24 | 2 |
| Animal Science..... | 6 | 6 | 12 | 18 | 70 | 210 | 14 |
| Lower Division..... | 2 | 2 | 18 | 6 | 35 | 105 | 7 |
| Upper Division..... | 4 | 4 | 9 | 12 | 35 | 105 | 7 |
| Aquaculture..... | 1 | 1 | 8 | 3 | 8 | 24 | 2 |
| Upper Division..... | 1 | 1 | 8 | 3 | 8 | 24 | 2 |
| Entomology..... | 2 | 2 | 10 | 6 | 20 | 60 | 4 |
| Lower Division..... | 1 | 1 | 10 | 3 | 10 | 30 | 2 |
| Upper Division..... | 1 | 1 | 10 | 3 | 10 | 30 | 2 |
| Horticulture..... | 7 | 8 | 14 | 25 | 111 | 351 | 23 |
| Lower Division..... | 3 | 4 | 15 | 12 | 61 | 183 | 12 |
| Upper Division..... | 4 | 4 | 13 | 13 | 50 | 168 | 11 |
| Plant Pathology..... | 1 | 1 | 5 | 3 | 5 | 15 | 1 |
| Upper Division..... | 1 | 1 | 5 | 3 | 5 | 15 | 1 |
| Plant Physiology..... | 1 | 1 | 5 | 3 | 5 | 15 | 1 |
| Upper Division..... | 1 | 1 | 5 | 3 | 5 | 15 | 1 |
| Soil Science..... | 2 | 2 | 8 | 6 | 15 | 45 | 3 |
| Upper Division..... | 2 | 2 | 8 | 6 | 15 | 45 | 3 |
| COLLEGE OF ARTS & SCIENCES..... | 410 | 554 | 22 | 1,506 | 12,528 | 35,077 | 2,340 |
| Lower Division..... | 181 | 340 | 25 | 882 | 8,340 | 22,930 | 1,527 |
| Upper Division..... | 220 | 205 | 19 | 604 | 4,082 | 11,879 | 793 |
| Graduate Level..... | 9 | 9 | 12 | 20 | 106 | 268 | 20 |
| Humanities..... | 136 | 161 | 19 | 467 | 3,129 | 9,461 | 629 |
| Lower Division..... | 70 | 110 | 19 | 316 | 2,144 | 6,515 | 433 |
| Upper Division..... | 63 | 48 | 19 | 142 | 958 | 2,865 | 191 |
| Graduate Level..... | 3 | 3 | 9 | 9 | 27 | 81 | 5 |

TABLE 2 (cont.)

| COURSE OFFERING AND LEVEL | COURSES | CLASSES 1/ No. Avg Size | | SEM HRS | STUD REGIS | STUDENT SEM HRS | COURSE FTE |
|------------------------------|---------|----------------------------|----------|------------|---------------|--------------------|---------------|
| | | No. | Avg Size | | | | |
| Art..... | 14 | 14 | 20 | 42 | 290 | 870 | 58 |
| Lower Division..... | 9 | 10 | 21 | 30 | 214 | 642 | 43 |
| Upper Division..... | 5 | 4 | 16 | 12 | 76 | 228 | 15 |
| China - US Relations..... | 3 | 3 | 9 | 9 | 27 | 81 | 5 |
| Graduate Level..... | 3 | 3 | 9 | 9 | 27 | 81 | 5 |
| Comun..... | 19 | 23 | 26 | 69 | 620 | 1,860 | 124 |
| Lower Division..... | 8 | 14 | 25 | 42 | 357 | 1,071 | 71 |
| Upper Division..... | 11 | 9 | 27 | 27 | 263 | 789 | 53 |
| Dance..... | 6 | 5 | 19 | 13 | 98 | 236 | 16 |
| Lower Division..... | 2 | 2 | 32 | 4 | 64 | 134 | 9 |
| Upper Division..... | 4 | 3 | 11 | 9 | 34 | 102 | 7 |
| Drama..... | 7 | 5 | 16 | 15 | 80 | 235 | 16 |
| Lower Division..... | 2 | 2 | 20 | 6 | 39 | 117 | 8 |
| Upper Division..... | 5 | 3 | 13 | 9 | 41 | 118 | 8 |
| English..... | 24 | 37 | 18 | 111 | 666 | 1,994 | 132 |
| Lower Division..... | 9 | 24 | 18 | 72 | 423 | 1,267 | 84 |
| Upper Division..... | 15 | 13 | 18 | 39 | 243 | 727 | 48 |
| English as Second Lang..... | 13 | 16 | 19 | 48 | 297 | 891 | 59 |
| Lower Division..... | 13 | 16 | 19 | 48 | 297 | 891 | 59 |
| Foreign Languages..... | 12 | 15 | 16 | 57 | 238 | 905 | 60 |
| Lower Division..... | 8 | 12 | 16 | 48 | 191 | 764 | 51 |
| Upper Division..... | 4 | 3 | 15 | 9 | 47 | 141 | 9 |
| Chinese..... | 1 | 1 | 19 | 4 | 19 | 76 | 5 |
| Lower Division..... | 1 | 1 | 19 | 4 | 19 | 76 | 5 |
| French..... | 2 | 2 | 10 | 8 | 19 | 76 | 5 |
| Lower Division..... | 2 | 2 | 10 | 8 | 19 | 76 | 5 |
| Japanese..... | 6 | 8 | 17 | 29 | 136 | 497 | 33 |
| Lower Division..... | 2 | 5 | 18 | 20 | 89 | 356 | 24 |
| Upper Division..... | 4 | 3 | 15 | 9 | 47 | 141 | 9 |
| Spanish..... | 3 | 4 | 16 | 16 | 64 | 256 | 17 |
| Lower Division..... | 3 | 4 | 16 | 16 | 64 | 256 | 17 |
| Honors..... | 1 | 1 | 16 | 3 | 16 | 48 | 3 |
| Lower Division..... | 1 | 1 | 16 | 3 | 16 | 48 | 3 |
| Japanese Studies..... | 2 | | | | 9 | 27 | 2 |
| Upper Division..... | 2 | | | | 9 | 27 | 2 |
| Linguistics..... | 4 | 4 | 23 | 12 | 94 | 282 | 18 |
| Lower Division..... | 1 | 2 | 29 | 6 | 57 | 171 | 11 |
| Upper Division..... | 3 | 2 | 18 | 6 | 37 | 111 | 7 |
| Music..... | 16 | 22 | 13 | 40 | 285 | 805 | 54 |
| Lower Division..... | 11 | 18 | 13 | 30 | 236 | 660 | 44 |
| Upper Division..... | 5 | 4 | 12 | 10 | 49 | 145 | 10 |
| Philosophy..... | 9 | 11 | 25 | 33 | 272 | 816 | 55 |
| Lower Division..... | 4 | 7 | 26 | 21 | 184 | 552 | 37 |
| Upper Division..... | 5 | 4 | 22 | 12 | 88 | 264 | 18 |
| Religious Studies..... | 6 | 5 | 27 | 15 | 137 | 411 | 27 |
| Lower Division..... | 2 | 2 | 33 | 6 | 66 | 198 | 13 |
| Upper Division..... | 4 | 3 | 23 | 9 | 71 | 213 | 14 |

TABLE 2 (cont.)

| COURSE OFFERING AND LEVEL | COURSES | CLASSES 1/ No. Avg Size | | SEM HRS | STUD REGIS | STUDENT SEM HRS | COURSE FTE |
|---|---------|----------------------------|----------|------------|---------------|--------------------|---------------|
| | | No. | Avg Size | | | | |
| Natural Sciences..... | 143 | 227 | 22 | 542 | 4,971 | 12,845 | 858 |
| Lower Division..... | 72 | 159 | 25 | 372 | 3,963 | 10,106 | 673 |
| Upper Division..... | 68 | 65 | 14 | 164 | 962 | 2,615 | 175 |
| Graduate Level..... | 3 | 3 | 15 | 6 | 46 | 124 | 10 |
| Astronomy..... | 13 | 12 | 22 | 22 | 261 | 657 | 43 |
| Lower Division..... | 6 | 7 | 30 | 15 | 210 | 562 | 37 |
| Upper Division..... | 7 | 5 | 10 | 7 | 51 | 95 | 6 |
| Biology..... | 28 | 41 | 26 | 77 | 1,095 | 2,467 | 164 |
| Lower Division..... | 16 | 30 | 30 | 54 | 904 | 1,986 | 132 |
| Upper Division..... | 12 | 11 | 15 | 23 | 191 | 481 | 32 |
| Chemistry..... | 16 | 30 | 22 | 45 | 671 | 1,232 | 82 |
| Lower Division..... | 10 | 24 | 25 | 32 | 610 | 1,106 | 74 |
| Upper Division..... | 6 | 6 | 10 | 13 | 61 | 126 | 8 |
| Computer Science..... | 15 | 26 | 18 | 78 | 469 | 1,404 | 94 |
| Lower Division..... | 10 | 22 | 18 | 66 | 390 | 1,168 | 78 |
| Upper Division..... | 5 | 4 | 19 | 12 | 79 | 236 | 16 |
| Geology..... | 9 | 13 | 19 | 33 | 242 | 660 | 44 |
| Lower Division..... | 6 | 10 | 21 | 24 | 210 | 564 | 38 |
| Upper Division..... | 3 | 3 | 11 | 9 | 32 | 96 | 6 |
| Marine Science..... | 19 | 27 | 21 | 64 | 565 | 1,438 | 96 |
| Lower Division..... | 7 | 16 | 26 | 36 | 409 | 1,006 | 67 |
| Upper Division..... | 12 | 11 | 14 | 28 | 156 | 432 | 29 |
| Mathematics..... | 16 | 35 | 25 | 118 | 874 | 2,913 | 194 |
| Lower Division..... | 10 | 31 | 25 | 105 | 785 | 2,632 | 175 |
| Upper Division..... | 6 | 4 | 21 | 13 | 89 | 281 | 19 |
| Natural Science..... | 2 | 1 | 18 | 3 | 22 | 58 | 4 |
| Lower Division..... | 1 | | | | 4 | 4 | |
| Upper Division..... | 1 | 1 | 18 | 3 | 18 | 54 | 4 |
| Nursing..... | 14 | 19 | 15 | 53 | 285 | 815 | 55 |
| Lower Division..... | 1 | 1 | 28 | 3 | 28 | 84 | 6 |
| Upper Division..... | 13 | 18 | 14 | 50 | 257 | 731 | 49 |
| Physics..... | 8 | 20 | 22 | 43 | 441 | 1,077 | 72 |
| Lower Division..... | 5 | 18 | 23 | 37 | 413 | 994 | 66 |
| Upper Division..... | 3 | 2 | 14 | 6 | 28 | 83 | 6 |
| Tropical Conservation Biol & Environ Sci..... | 3 | 3 | 15 | 6 | 46 | 124 | 10 |
| Graduate Level..... | 3 | 3 | 15 | 6 | 46 | 124 | 10 |
| Social Sciences..... | 128 | 160 | 27 | 479 | 4,350 | 12,519 | 836 |
| Lower Division..... | 38 | 65 | 33 | 176 | 2,157 | 6,081 | 406 |
| Upper Division..... | 87 | 92 | 23 | 298 | 2,160 | 6,375 | 425 |
| Graduate Level..... | 3 | 3 | 11 | 5 | 33 | 63 | 5 |
| Anthropology..... | 15 | 18 | 33 | 52 | 591 | 1,756 | 117 |
| Lower Division..... | 5 | 10 | 39 | 28 | 392 | 1,164 | 78 |
| Upper Division..... | 10 | 8 | 24 | 24 | 199 | 592 | 39 |
| Education..... | 40 | 45 | 23 | 107 | 1,019 | 2,435 | 163 |
| Lower Division..... | 15 | 14 | 26 | 26 | 365 | 680 | 45 |
| Upper Division..... | 22 | 28 | 22 | 76 | 621 | 1,692 | 113 |
| Graduate Level..... | 3 | 3 | 11 | 5 | 33 | 63 | 5 |
| Education..... | 19 | 26 | 19 | 66 | 491 | 1,266 | 85 |
| Upper Division..... | 16 | 23 | 20 | 61 | 458 | 1,203 | 80 |
| Graduate Level..... | 3 | 3 | 11 | 5 | 33 | 63 | 5 |

TABLE 2 (cont.)

| COURSE OFFERING AND LEVEL | COURSES | CLASSES 1/ | | SEM HRS | STUD REGIS | STUDENT SEM HRS | COURSE FTE |
|---|---------|------------|----------|------------|---------------|--------------------|---------------|
| | | No. | Avg Size | | | | |
| Health & Phys Ed..... | 21 | 19 | 28 | 41 | 528 | 1,169 | 78 |
| Lower Division..... | 15 | 14 | 26 | 26 | 365 | 680 | 45 |
| Upper Division..... | 6 | 5 | 32 | 15 | 163 | 489 | 33 |
| Geography..... | 13 | 16 | 30 | 48 | 490 | 1,470 | 98 |
| Lower Division..... | 5 | 9 | 41 | 27 | 370 | 1,110 | 74 |
| Upper Division..... | 8 | 7 | 17 | 21 | 120 | 360 | 24 |
| History..... | 11 | 13 | 23 | 39 | 301 | 903 | 60 |
| Lower Division..... | 1 | 4 | 32 | 12 | 127 | 381 | 25 |
| Upper Division..... | 10 | 9 | 19 | 27 | 174 | 522 | 35 |
| Political Science..... | 13 | 16 | 23 | 72 | 371 | 1,149 | 77 |
| Lower Division..... | 3 | 6 | 33 | 18 | 198 | 594 | 40 |
| Upper Division..... | 10 | 10 | 17 | 54 | 173 | 555 | 37 |
| Psychology..... | 21 | 31 | 32 | 101 | 1,025 | 3,205 | 213 |
| Lower Division..... | 4 | 12 | 35 | 41 | 418 | 1,355 | 90 |
| Upper Division..... | 17 | 19 | 30 | 60 | 607 | 1,850 | 123 |
| Sociology..... | 14 | 19 | 26 | 54 | 490 | 1,412 | 95 |
| Lower Division..... | 4 | 8 | 28 | 18 | 224 | 608 | 41 |
| Upper Division..... | 10 | 11 | 24 | 36 | 266 | 804 | 54 |
| Women's Studies..... | 1 | 2 | 32 | 6 | 63 | 189 | 13 |
| Lower Division..... | 1 | 2 | 32 | 6 | 63 | 189 | 13 |
| General Education | 3 | 6 | 13 | 18 | 78 | 252 | 17 |
| Lower Division..... | 1 | 6 | 13 | 18 | 76 | 228 | 15 |
| Upper Division..... | 2 | | | | 2 | 24 | 2 |
| Interdisciplinary Studies | 2 | | | | 2 | 24 | 2 |
| Upper Division..... | 2 | | | | 2 | 24 | 2 |
| University | 1 | 6 | 13 | 18 | 76 | 228 | 15 |
| Lower Division..... | 1 | 6 | 13 | 18 | 76 | 228 | 15 |
| COLLEGE OF BUSINESS & ECONOMICS 2/..... | 36 | 48 | 23 | 144 | 1,111 | 3,333 | 221 |
| Lower Division..... | 8 | 20 | 30 | 60 | 600 | 1,800 | 120 |
| Upper Division..... | 28 | 28 | 18 | 84 | 511 | 1,533 | 101 |
| Accounting..... | 6 | 8 | 20 | 24 | 159 | 477 | 31 |
| Lower Division..... | 2 | 4 | 27 | 12 | 107 | 321 | 21 |
| Upper Division..... | 4 | 4 | 13 | 12 | 52 | 156 | 10 |
| Business..... | 2 | 6 | 31 | 18 | 188 | 564 | 38 |
| Lower Division..... | 1 | 5 | 37 | 15 | 184 | 552 | 37 |
| Upper Division..... | 1 | 1 | 4 | 3 | 4 | 12 | 1 |
| Economics..... | 9 | 12 | 27 | 36 | 328 | 984 | 66 |
| Lower Division..... | 3 | 7 | 31 | 21 | 214 | 642 | 43 |
| Upper Division..... | 6 | 5 | 23 | 15 | 114 | 342 | 23 |
| Finance..... | 4 | 4 | 19 | 12 | 77 | 231 | 15 |
| Upper Division..... | 4 | 4 | 19 | 12 | 77 | 231 | 15 |
| Management..... | 7 | 8 | 23 | 24 | 183 | 549 | 36 |
| Lower Division..... | 1 | 2 | 29 | 6 | 57 | 171 | 11 |
| Upper Division..... | 6 | 6 | 21 | 18 | 126 | 378 | 25 |
| Marketing..... | 3 | 4 | 15 | 12 | 60 | 180 | 12 |
| Upper Division..... | 3 | 4 | 15 | 12 | 60 | 180 | 12 |

TABLE 2 (cont.)

| COURSE OFFERING AND LEVEL | COURSES | CLASSES 1/ | | SEM HRS | STUD REGIS | STUDENT SEM HRS | COURSE FTE |
|------------------------------|---------|------------|----------|------------|---------------|--------------------|---------------|
| | | No. | Avg Size | | | | |
| Quant Bus Analysis..... | 4 | 5 | 21 | 15 | 104 | 312 | 21 |
| Lower Division..... | 1 | 2 | 19 | 6 | 38 | 114 | 8 |
| Upper Division..... | 3 | 3 | 22 | 9 | 66 | 198 | 13 |
| Tourism | 1 | 1 | 12 | 3 | 12 | 36 | 2 |
| Upper Division..... | 1 | 1 | 12 | 3 | 12 | 36 | 2 |
| KE'ELIKOLANI | 23 | 34 | 17 | 109 | 590 | 1,827 | 124 |
| Lower Division | 9 | 21 | 21 | 69 | 440 | 1,361 | 91 |
| Upper Division | 10 | 11 | 12 | 34 | 128 | 400 | 27 |
| Graduate Level | 4 | 2 | 8 | 6 | 22 | 66 | 6 |
| Hawaiian | 10 | 17 | 16 | 61 | 279 | 930 | 64 |
| Lower Division..... | 3 | 11 | 18 | 40 | 201 | 654 | 44 |
| Upper Division..... | 3 | 4 | 14 | 15 | 56 | 210 | 14 |
| Graduate Level | 4 | 2 | 8 | 6 | 22 | 66 | 6 |
| Hawaiian Studies | 13 | 17 | 18 | 48 | 311 | 897 | 60 |
| Lower Division..... | 6 | 10 | 24 | 29 | 239 | 707 | 47 |
| Upper Division..... | 7 | 7 | 10 | 19 | 72 | 190 | 13 |

1/ Excludes classes numbered -99 (individual instruction) and 700 (thesis research).

2/ The College of Business and Economics was established effective January 2004. Formerly called School of Business and a functional division within the College Arts and Sciences.

SOURCES: Computer Report 3011: "Course Registration Summary Report" and
Computer Report 3011C: "Number of Classes and Average Class Size."

TABLE 3
STUDENT SEMESTER HOURS (SSH) AND COURSE FTE
UNIVERSITY OF HAWAII AT HILO
FALL 2000 TO FALL 2004

| COLLEGE AND LEVEL | FALL 2000 | | | FALL 2001 | | | FALL 2002 | | | FALL 2003 | | | FALL 2004 | | |
|--|------------|--------|---------------|------------|-------|---------------|------------|-------|---------------|------------|-------|---------------|------------|---------|---------------|
| | SSH No. | %Chg | COURSE FTE | SSH No. | %Chg | COURSE FTE | SSH No. | %Chg | COURSE FTE | SSH No. | %Chg | COURSE FTE | SSH No. | %Chg | COURSE FTE |
| TOTAL..... | 34,512 | 2.9 | 2,302 | 35,771 | 3.6 | 2,389 | 38,010 | 6.3 | 2,542 | 41,169 | 8.3 | 2,745 | 41,408 | 0.6 | 2,763 |
| Lower Division..... | 22,742 | 2.9 | 1,518 | 23,189 | 2.0 | 1,547 | 24,669 | 6.4 | 1,646 | 26,904 | 9.1 | 1,795 | 26,670 | -0.9 | 1,776 |
| Upper Division..... | 11,678 | 2.7 | 776 | 12,365 | 5.9 | 822 | 13,195 | 6.7 | 883 | 14,128 | 7.1 | 939 | 14,404 | 2.0 | 961 |
| Graduate Level..... | 92 | 9.5 | 8 | 217 | 135.9 | 20 | 146 | -32.7 | 13 | 137 | -6.2 | 11 | 334 | 143.8 | 26 |
| COLL OF AGRIC, FOR & NAT RES MGT..... | 1,237 | -2.7 | 82 | 1,208 | -2.3 | 79 | 1,444 | 19.5 | 96 | 1,395 | -3.4 | 94 | 1,171 | -16.1 | 78 |
| Lower Division..... | 614 | -15.3 | 41 | 696 | 13.4 | 46 | 786 | 12.9 | 52 | 717 | -8.8 | 49 | 579 | -19.2 | 38 |
| Upper Division..... | 623 | 14.1 | 41 | 512 | -17.8 | 33 | 658 | 28.5 | 44 | 678 | 3.0 | 45 | 592 | -12.7 | 40 |
| COLLEGE OF ARTS & SCIENCES | 29,025 | 3.2 | 1,937 | 29,930 | 3.1 | 1,999 | 31,654 | 5.8 | 2,119 | 33,996 | 7.4 | 2,267 | 35,077 | 3.2 | 2,340 |
| Lower Division..... | 19,578 | 3.0 | 1,307 | 19,853 | 1.4 | 1,324 | 21,041 | 6.0 | 1,405 | 22,658 | 7.7 | 1,510 | 22,930 | 1.2 | 1,527 |
| Upper Division..... | 9,355 | 3.1 | 622 | 9,909 | 5.9 | 660 | 10,497 | 5.9 | 704 | 11,205 | 6.7 | 746 | 11,879 | 6.0 | 793 |
| Graduate Level..... | 92 | 119.0 | 8 | 168 | 82.6 | 15 | 116 | -31.0 | 10 | 133 | 14.7 | 11 | 268 | 101.5 | 20 |
| Humanities | 7,688 | 4.6 | 512 | 7,847 | 2.1 | 525 | 8,283 | 5.6 | 554 | 8,873 | 7.1 | 591 | 9,461 | 6.6 | 629 |
| Lower Division..... | 5,196 | -0.3 | 346 | 5,229 | 0.6 | 351 | 5,962 | 14.0 | 398 | 6,090 | 2.1 | 406 | 6,515 | 7.0 | 433 |
| Upper Division..... | 2,492 | 16.5 | 166 | 2,618 | 5.1 | 174 | 2,321 | -11.3 | 156 | 2,783 | 19.9 | 185 | 2,865 | 2.9 | 191 |
| Graduate Level..... | | | | | | | | | | | | | 81 | | 5 |
| Natural Sciences..... | 10,347 | 1.6 | 692 | 10,601 | 2.5 | 707 | 11,240 | 6.0 | 751 | 12,485 | 11.1 | 833 | 12,845 | 2.9 | 858 |
| Lower Division..... | 8,550 | 0.9 | 572 | 8,528 | -0.3 | 567 | 8,807 | 3.3 | 588 | 10,017 | 13.7 | 668 | 10,106 | 0.9 | 673 |
| Upper Division..... | 1,797 | 5.3 | 120 | 2,073 | 15.4 | 140 | 2,433 | 17.4 | 163 | 2,468 | 1.4 | 165 | 2,615 | 6.0 | 175 |
| Graduate Level..... | | | | | | | | | | | | | 124 | | 10 |
| Social Sciences..... | 10,780 | 3.9 | 719 | 11,221 | 4.1 | 750 | 11,720 | 4.4 | 786 | 12,299 | 4.9 | 821 | 12,519 | 1.8 | 836 |
| Lower Division..... | 5,685 | 11.0 | 379 | 5,871 | 3.3 | 391 | 5,915 | 0.7 | 395 | 6,263 | 5.9 | 417 | 6,081 | -2.9 | 406 |
| Upper Division..... | 5,003 | -4.0 | 332 | 5,182 | 3.6 | 344 | 5,689 | 9.8 | 381 | 5,903 | 3.8 | 393 | 6,375 | 8.0 | 425 |
| Graduate Level..... | 92 | 119.0 | 8 | 168 | 82.6 | 15 | 116 | -31.0 | 10 | 133 | 14.7 | 11 | 63 | -52.6 | 5 |
| General Education..... | 210 | -5.4 | 14 | 261 | 24.3 | 17 | 411 | 57.5 | 28 | 339 | -17.5 | 22 | 252 | -25.7 | 17 |
| Lower Division..... | 147 | -27.9 | 10 | 225 | 53.1 | 15 | 357 | 58.7 | 24 | 288 | -19.3 | 19 | 228 | -20.8 | 15 |
| Upper Division..... | 63 | 250.0 | 4 | 36 | -42.9 | 2 | 54 | 50.0 | 4 | 51 | -5.6 | 3 | 24 | -52.9 | 2 |
| COLLEGE OF BUSINESS & ECONOMICS 1/ ... | 2,954 | 9.0 | 197 | 3,114 | 5.4 | 207 | 3,354 | 7.7 | 222 | 3,621 | 8.0 | 240 | 3,333 | -8.0 | 221 |
| Lower Division..... | 1,628 | 20.1 | 109 | 1,536 | -5.7 | 103 | 1,644 | 7.0 | 109 | 1,812 | 10.2 | 121 | 1,800 | -0.7 | 120 |
| Upper Division..... | 1,326 | -2.0 | 88 | 1,578 | 19.0 | 104 | 1,710 | 8.4 | 113 | 1,809 | 5.8 | 119 | 1,533 | -15.3 | 101 |
| KE'ELIKOLANI..... | 1,296 | -10.6 | 86 | 1,519 | 17.2 | 104 | 1,558 | 2.6 | 105 | 2,157 | 38.4 | 144 | 1,827 | -15.3 | 124 |
| Lower Division..... | 922 | -8.4 | 61 | 1,104 | 19.7 | 74 | 1,198 | 8.5 | 80 | 1,717 | 43.3 | 115 | 1,361 | -20.7 | 91 |
| Upper Division..... | 374 | -6.7 | 25 | 366 | -2.1 | 25 | 330 | -9.8 | 22 | 436 | 32.1 | 29 | 400 | -8.3 | 27 |
| Graduate Level..... | 0 | -100.0 | 0 | 49 | | 5 | 30 | -38.8 | 3 | 4 | -86.7 | 0 | 66 | 1,550.0 | 6 |

1/ The College of Business and Economics was established effective January 2004. Formerly called School of Business and a functional division within the College of Arts and Sciences.

SOURCE: Computer Report 3011: "Course Registration Summary Report."

TABLE 4
NUMBER OF CLASSES AND AVERAGE CLASS SIZE 1/
UNIVERSITY OF HAWAII AT HILO
FALL 2000 TO FALL 2004

| COLLEGE AND LEVEL | FALL 2000 | | | FALL 2001 | | | FALL 2002 | | | FALL 2003 | | | FALL 2004 | | |
|--|----------------|--------|-------------|----------------|-------|-------------|----------------|-------|-------------|----------------|--------|-------------|----------------|-------|-------------|
| | CLASSES No. | %Chg | AVG SIZE | CLASSES No. | %Chg | AVG SIZE | CLASSES No. | %Chg | AVG SIZE | CLASSES No. | %Chg | AVG SIZE | CLASSES No. | %Chg | AVG SIZE |
| TOTAL..... | 575 | 1.8 | 21 | 598 | 4.0 | 21 | 611 | 2.2 | 22 | 657 | 7.5 | 22 | 671 | 2.1 | 22 |
| Lower Division..... | 328 | 0.6 | 25 | 346 | 5.5 | 24 | 361 | 4.3 | 24 | 390 | 8.0 | 25 | 396 | 1.5 | 24 |
| Upper Division..... | 245 | 3.8 | 16 | 244 | -0.4 | 17 | 245 | 0.4 | 18 | 261 | 6.5 | 18 | 264 | 1.1 | 18 |
| Graduate Level..... | 2 | -33.3 | 22 | 8 | 300.0 | 12 | 5 | -37.5 | 12 | 6 | 20.0 | 9 | 11 | 83.3 | 11 |
| COLL OF AGRIC, FOR & NAT RES MGT | 33 | 0.0 | 14 | 30 | -9.1 | 14 | 31 | 3.3 | 16 | 35 | 12.9 | 13 | 35 | 0.0 | 11 |
| Lower Division..... | 11 | -15.4 | 24 | 12 | 9.1 | 23 | 12 | 0.0 | 25 | 14 | 16.7 | 19 | 15 | 7.1 | 14 |
| Upper Division..... | 22 | 10.0 | 9 | 18 | -18.2 | 9 | 19 | 5.6 | 11 | 21 | 10.5 | 10 | 20 | -4.8 | 9 |
| COLLEGE OF ARTS & SCIENCES | 469 | 2.2 | 22 | 491 | 4.7 | 22 | 508 | 3.5 | 22 | 535 | 5.3 | 22 | 554 | 3.6 | 22 |
| Lower Division..... | 284 | 1.1 | 25 | 298 | 4.9 | 24 | 314 | 5.4 | 24 | 330 | 5.1 | 25 | 340 | 3.0 | 25 |
| Upper Division..... | 183 | 3.4 | 17 | 188 | 2.7 | 18 | 191 | 1.6 | 18 | 199 | 4.2 | 19 | 205 | 3.0 | 19 |
| Graduate Level..... | 2 | 100.0 | 22 | 5 | 150.0 | 16 | 3 | -40.0 | 17 | 6 | 100.0 | 9 | 9 | 50.0 | 12 |
| Humanities..... | 136 | 0.7 | 19 | 151 | 11.0 | 17 | 155 | 2.6 | 18 | 166 | 7.1 | 18 | 161 | -3.0 | 19 |
| Lower Division..... | 88 | 0.0 | 20 | 104 | 18.2 | 17 | 109 | 4.8 | 18 | 115 | 5.5 | 18 | 110 | -4.3 | 19 |
| Upper Division..... | 48 | 2.1 | 17 | 47 | -2.1 | 18 | 46 | -2.1 | 16 | 51 | 10.9 | 18 | 48 | -5.9 | 19 |
| Graduate Level..... | | | | | | | | | | | | | 3 | | 9 |
| Natural Sciences..... | 183 | 2.2 | 21 | 184 | 0.5 | 22 | 196 | 6.5 | 21 | 207 | 5.6 | 23 | 227 | 9.7 | 22 |
| Lower Division..... | 129 | -0.8 | 25 | 124 | -3.9 | 26 | 135 | 8.9 | 24 | 143 | 5.9 | 26 | 159 | 11.2 | 25 |
| Upper Division..... | 54 | 10.2 | 12 | 60 | 11.1 | 13 | 61 | 1.7 | 14 | 64 | 4.9 | 14 | 65 | 1.6 | 14 |
| Graduate Level..... | | | | | | | | | | | | | 3 | | 15 |
| Social Sciences..... | 147 | 4.3 | 25 | 150 | 2.0 | 26 | 148 | -1.3 | 27 | 155 | 4.7 | 27 | 160 | 3.2 | 27 |
| Lower Division..... | 64 | 8.5 | 31 | 64 | 0.0 | 33 | 61 | -4.7 | 34 | 65 | 6.6 | 34 | 65 | 0.0 | 33 |
| Upper Division..... | 81 | 0.0 | 21 | 81 | 0.0 | 21 | 84 | 3.7 | 22 | 84 | 0.0 | 23 | 92 | 9.5 | 23 |
| Graduate Level..... | 2 | 100.0 | 22 | 5 | 150.0 | 16 | 3 | -40.0 | 17 | 6 | 100.0 | 9 | 3 | -50.0 | 11 |
| General Education..... | 3 | -25.0 | 16 | 6 | 100.0 | 14 | 9 | 50.0 | 13 | 7 | -22.2 | 14 | 6 | -14.3 | 13 |
| Lower Division..... | 3 | -25.0 | 16 | 6 | 100.0 | 14 | 9 | 50.0 | 13 | 7 | -22.2 | 14 | 6 | -14.3 | 13 |
| COLLEGE OF BUSINESS & ECONOMICS 2/ ... | 46 | 2.2 | 22 | 45 | -2.2 | 23 | 45 | 0.0 | 25 | 50 | 11.1 | 24 | 48 | -4.0 | 23 |
| Lower Division..... | 19 | 11.8 | 30 | 19 | 0.0 | 27 | 18 | -5.3 | 30 | 21 | 16.7 | 29 | 20 | -4.8 | 30 |
| Upper Division..... | 27 | -3.6 | 16 | 26 | -3.7 | 20 | 27 | 3.8 | 21 | 29 | 7.4 | 21 | 28 | -3.4 | 18 |
| KE'ELIKOLANI..... | 27 | -3.6 | 15 | 32 | 18.5 | 15 | 27 | -15.6 | 19 | 37 | 37.0 | 18 | 34 | -8.1 | 17 |
| Lower Division..... | 14 | -6.7 | 21 | 17 | 21.4 | 21 | 17 | 0.0 | 23 | 25 | 47.1 | 22 | 21 | -16.0 | 21 |
| Upper Division..... | 13 | 18.2 | 9 | 12 | -7.7 | 8 | 8 | -33.3 | 13 | 12 | 50.0 | 10 | 11 | -8.3 | 12 |
| Graduate Level..... | | -100.0 | | 3 | | 5 | 2 | -33.3 | 5 | | -100.0 | | 2 | | 8 |

1/ Excludes classes -99 (individual instruction) and 700 (thesis research).

2/ The College of Business and Economics was established effective January 2004. Formerly called School of Business and a functional division within the College of Arts and Sciences.

SOURCE: Computer Report 3011C: "Number of Classes and Average Class Size."