

COURSE REGISTRATION REPORT

UNIVERSITY OF HAWAI'I AT HILO

SPRING 2000

Institutional Research Office
University of Hawai'i
April 2000

File Reference: Management and Planning Support Folder, Courses

Reports available online at: <http://www.hawaii.edu/iro/maps.htm>

University of Hawai'i at Hilo, Spring 1996 - 2000 *

Figure 1: Student Semester Hours (SSH)

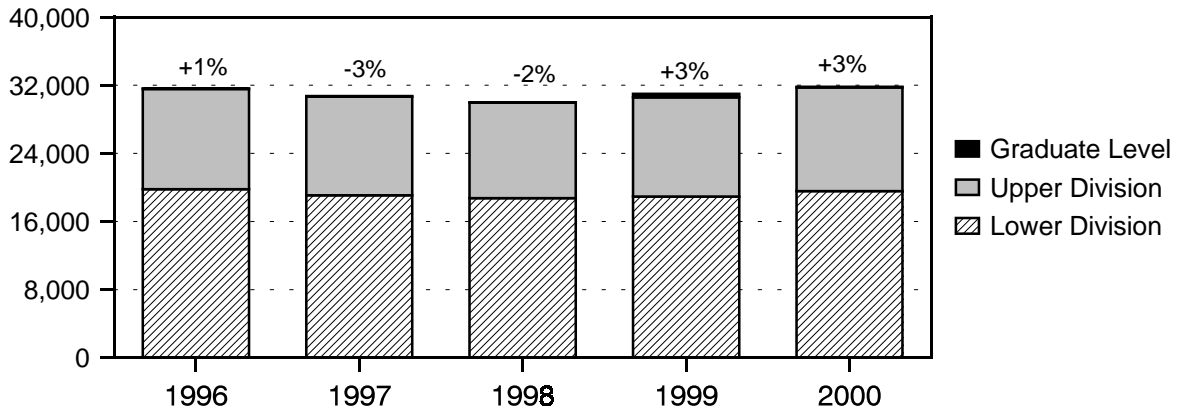


Figure 2: Course FTE

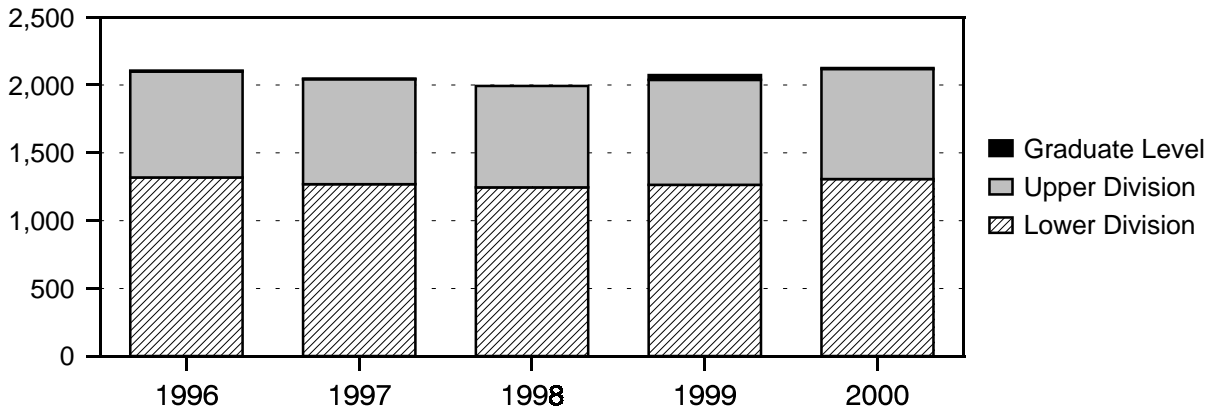
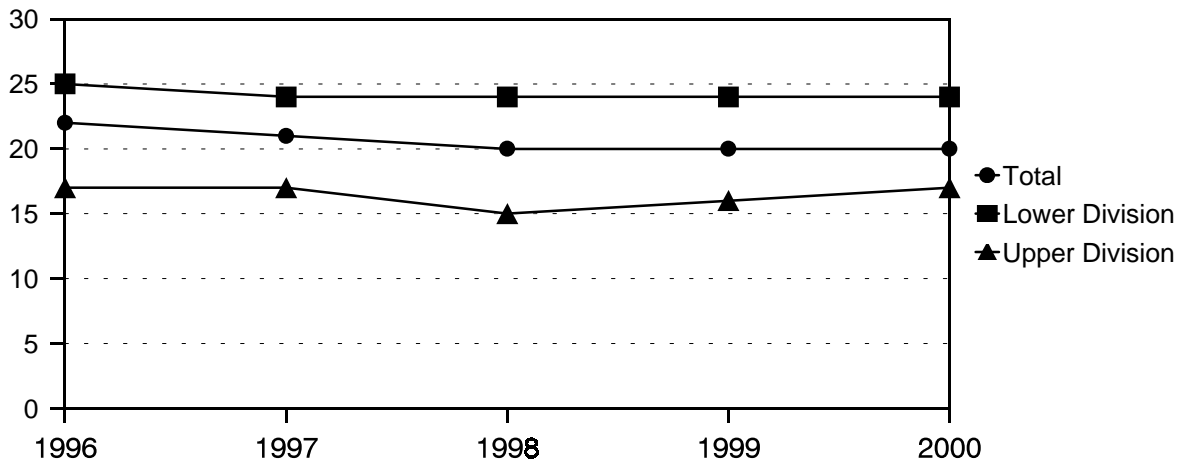


Figure 3: Average Class Size



* Note: In Spring 2000, data includes continuing education classes.

TABLE 1
 COURSE REGISTRATION AND AVERAGE CLASS SIZE SUMMARY
 UNIVERSITY OF HAWAII AT HILO
 SPRING 2000

COURSE OFFERING AND LEVEL	COURSES	CLASSES 1/		SEM HOURS	STUDENT REGIS	STUDENT SEM HRS	COURSE FTE
		No.	Avg Size				
TOTAL.....	439	537	20	1,478	11,179	31,819	2,125
Lower Division.....	177	294	24	786	7,015	19,563	1,306
Upper Division.....	257	238	17	681	4,133	12,181	812
Graduate Level.....	5	5	6	11	31	75	7
COLLEGE OF AGRICULTURE.....	35	31	17	93	567	1,333	89
Lower Division.....	9	7	37	22	279	500	34
Upper Division.....	26	24	11	71	288	833	55
Agriculture.....	8	5	44	14	258	386	26
Lower Division.....	4	2	90	7	197	254	17
Upper Division.....	4	3	14	7	61	132	9
Agricultural Business.....	3	2	10	6	21	64	4
Lower Division.....	1	1	15	3	15	45	3
Upper Division.....	2	1	5	3	6	19	1
Agricultural Economics.....	2	2	6	6	11	33	2
Lower Division.....	1	1	5	3	5	15	1
Upper Division.....	1	1	6	3	6	18	1
Animal Science.....	7	7	14	21	100	300	20
Lower Division.....	1	1	18	3	18	54	4
Upper Division.....	6	6	14	18	82	246	16
Aquaculture.....	3	3	11	9	33	99	7
Lower Division.....	1	1	19	3	19	57	4
Upper Division.....	2	2	7	6	14	42	3
Entomology.....	2	2	8	6	16	48	3
Upper Division.....	2	2	8	6	16	48	3
Forestry.....	2	2	10	6	20	60	4
Upper Division.....	2	2	10	6	20	60	4
Horticulture.....	5	5	15	16	76	247	16
Lower Division.....	1	1	25	3	25	75	5
Upper Division.....	4	4	13	13	51	172	11
Plant Pathology.....	1	1	13	3	13	39	3
Upper Division.....	1	1	13	3	13	39	3
Soil Science.....	2	2	10	6	19	57	4
Upper Division.....	2	2	10	6	19	57	4

TABLE 1 (cont.)

COURSE OFFERING AND LEVEL	COURSES	CLASSES 1/		SEM HOURS	STUDENT REGIS	STUDENT SEM HRS	COURSE FTE
		No.	Avg Size				
COLLEGE OF ARTS & SCIENCES.....	380	478	21	1,289	10,202	29,154	1,946
Lower Division.....	158	272	24	710	6,443	18,107	1,208
Upper Division.....	221	205	18	576	3,747	11,011	735
Graduate Level.....	1	1	12	3	12	36	3
Business & Economics.....	37	44	22	132	988	2,962	199
Lower Division.....	8	17	29	51	491	1,473	98
Upper Division.....	29	27	18	81	497	1,489	101
Accounting.....	4	6	24	18	144	432	29
Lower Division.....	2	4	32	12	126	378	25
Upper Division.....	2	2	9	6	18	54	4
Business.....	2	3	20	9	60	180	12
Lower Division.....	1	2	26	6	52	156	10
Upper Division.....	1	1	8	3	8	24	2
Economics.....	8	11	27	33	294	882	59
Lower Division.....	3	7	32	21	223	669	45
Upper Division.....	5	4	18	12	71	213	14
Finance.....	4	3	24	9	74	222	15
Upper Division.....	4	3	24	9	74	222	15
Management.....	8	9	22	27	199	597	40
Lower Division.....	1	2	27	6	54	162	11
Upper Division.....	7	7	21	21	145	435	29
Marketing.....	4	4	17	12	70	208	14
Upper Division.....	4	4	17	12	70	208	14
Quant Bus Analysis.....	5	6	21	18	124	372	25
Lower Division.....	1	2	18	6	36	108	7
Upper Division.....	4	4	22	12	88	264	18
Tourism	2	2	12	6	23	69	5
Upper Division.....	2	2	12	6	23	69	5
Humanities.....	98	121	18	337	2,184	6,493	433
Lower Division.....	47	81	18	227	1,475	4,457	298
Upper Division.....	51	40	17	110	709	2,036	135
Art.....	13	14	22	42	310	928	62
Lower Division.....	9	11	24	33	268	804	54
Upper Division.....	4	3	13	9	42	124	8
Communication 2/.....	9	14	23	42	344	1,030	69
Lower Division.....	3	10	24	30	235	705	47
Upper Division.....	6	4	23	12	109	325	22
Dance.....	3	2	30	5	61	143	9
Lower Division.....	1	1	38	2	38	76	5
Upper Division.....	2	1	22	3	23	67	4

TABLE 1 (cont.)

COURSE OFFERING AND LEVEL	COURSES	CLASSES 1/		SEM HOURS	STUDENT REGIS	STUDENT SEM HRS	COURSE FTE
		No.	Avg Size				
Drama.....	6	4	20	10	83	238	16
Lower Division.....	1	1	25	3	25	75	5
Upper Division.....	5	3	19	7	58	163	11
English.....	18	34	19	102	656	1,968	131
Lower Division.....	6	18	19	54	342	1,026	68
Upper Division.....	12	16	20	48	314	942	63
English as Second Language.....	1	2	12	6	23	69	5
Lower Division.....	1	2	12	6	23	69	5
Foreign Languages.....	12	13	14	51	185	727	49
Lower Division.....	9	12	15	48	177	707	48
Upper Division.....	3	1	5	3	8	20	1
Chinese.....	1	1	14	4	14	56	4
Lower Division.....	1	1	14	4	14	56	4
French.....	2	2	13	8	26	104	7
Lower Division.....	2	2	13	8	26	104	7
Japanese.....	6	7	12	27	84	325	22
Lower Division.....	4	6	13	24	77	308	21
Upper Division.....	2	1	5	3	7	17	1
Spanish.....	3	3	20	12	61	242	16
Lower Division.....	2	3	20	12	60	239	16
Upper Division.....	1	0	0	0	1	3	0
Honors.....	3	3	4	7	13	39	2
Lower Division.....	1	1	11	3	11	33	2
Upper Division.....	2	2	1	4	2	6	0
Linguistics.....	4	2	20	6	42	126	9
Lower Division.....	1	1	29	3	29	87	6
Upper Division.....	3	1	11	3	13	39	3
Music.....	18	23	9	36	215	469	31
Lower Division.....	11	18	9	27	157	365	24
Upper Division.....	7	5	11	9	58	104	7
Philosophy.....	9	9	23	27	216	648	43
Lower Division.....	3	5	27	15	135	405	27
Upper Division.....	6	4	19	12	81	243	16
Religious Studies.....	2	1	35	3	36	108	7
Lower Division.....	1	1	35	3	35	105	7
Upper Division.....	1	0	0	0	1	3	0

TABLE 1 (cont.)

COURSE OFFERING AND LEVEL	COURSES	CLASSES 1/ No. Avg Size		SEM HOURS	STUDENT REGIS	STUDENT SEM HRS	COURSE FTE
Natural Sciences.....	127	177	20	434	3,532	9,390	625
Lower Division.....	66	115	23	275	2,704	7,206	480
Upper Division.....	61	62	13	159	828	2,184	145
Astronomy.....	7	10	18	22	181	471	31
Lower Division.....	4	8	21	18	164	422	28
Upper Division.....	3	2	8	4	17	49	3
Biology.....	28	36	23	66	829	1,798	120
Lower Division.....	16	25	26	47	646	1,412	94
Upper Division.....	12	11	16	19	183	386	26
Chemistry.....	14	21	20	36	431	1,111	74
Lower Division.....	9	17	24	29	405	1,059	71
Upper Division.....	5	4	6	7	26	52	3
Computer Science.....	12	23	18	69	416	1,248	83
Lower Division.....	8	17	20	51	335	1,005	67
Upper Division.....	4	6	14	18	81	243	16
Geology.....	10	14	21	37	295	782	52
Lower Division.....	8	12	22	31	266	695	46
Upper Division.....	2	2	15	6	29	87	6
Marine Science	15	21	21	53	441	1,166	78
Lower Division.....	6	11	21	25	236	583	39
Upper Division.....	9	10	21	28	205	583	39
Mathematics.....	17	20	26	67	518	1,737	116
Lower Division.....	10	15	31	52	468	1,588	106
Upper Division.....	7	5	9	15	50	149	10
Natural Science.....	4	3	9	8	29	74	5
Lower Division.....	1	1	9	3	9	27	2
Upper Division.....	3	2	9	5	20	47	3
Nursing.....	15	20	12	57	237	649	43
Lower Division.....	1	1	26	3	26	78	5
Upper Division.....	14	19	11	54	211	571	38
Physics.....	5	9	17	19	155	354	23
Lower Division.....	3	8	19	16	149	337	22
Upper Division.....	2	1	5	3	6	17	1
Social Sciences.....	116	133	25	377	3,466	10,213	683
Lower Division.....	35	56	31	148	1,741	4,875	326
Upper Division.....	80	76	21	226	1,713	5,302	354
Graduate Level.....	1	1	12	3	12	36	3
Anthropology.....	15	16	29	48	484	1,455	97
Lower Division.....	3	6	42	18	252	756	50
Upper Division.....	12	10	21	30	232	699	47

TABLE 1 (cont.)

COURSE OFFERING AND LEVEL	COURSES	CLASSES 1/		SEM HOURS	STUDENT REGIS	STUDENT SEM HRS	COURSE FTE
		No.	Avg Size				
Education.....	27	31	20	74	627	1,719	116
Lower Division.....	13	13	18	19	231	341	23
Upper Division.....	13	17	22	52	384	1,342	90
Graduate Level.....	1	1	12	3	12	36	3
Education.....	9	15	20	46	303	1,099	74
Upper Division.....	8	14	21	43	291	1,063	71
Graduate Level.....	1	1	12	3	12	36	3
Health & Phys Ed.....	18	16	20	28	324	620	42
Lower Division.....	13	13	18	19	231	341	23
Upper Division.....	5	3	30	9	93	279	19
Geography.....	13	14	25	42	355	1,065	71
Lower Division.....	4	7	36	21	253	759	51
Upper Division.....	9	7	14	21	102	306	20
History.....	12	12	29	36	366	1,096	73
Lower Division.....	3	5	45	15	226	676	45
Upper Division.....	9	7	18	21	140	420	28
Political Science.....	16	16	29	47	480	1,453	97
Lower Division.....	3	5	42	15	209	627	42
Upper Division.....	13	11	23	32	271	826	55
Psychology.....	16	23	28	73	680	2,109	141
Lower Division.....	3	12	27	42	324	1,088	73
Upper Division.....	13	11	30	31	356	1,021	68
Sociology.....	14	20	21	54	429	1,183	79
Lower Division.....	4	7	29	15	203	499	33
Upper Division.....	10	13	17	39	226	684	46
Women's Studies	3	1	42	3	45	133	9
Lower Division.....	2	1	42	3	43	129	9
Upper Division.....	1	0	0	0	2	4	0
General Education.....	2	3	11	9	32	96	6
Lower Division.....	2	3	11	9	32	96	6
Interdisciplinary Studies.....	2	3	11	9	32	96	6
Lower Division.....	2	3	11	9	32	96	6
KE'ELIKOLANI 4/.....	24	28	15	96	410	1,332	90
Lower Division.....	10	15	19	54	293	956	64
Upper Division.....	10	9	11	34	98	337	22
Graduate Level.....	4	4	5	8	19	39	4

TABLE 1 (cont.)

COURSE OFFERING AND LEVEL	COURSES	CLASSES 1/ No. Avg Size		SEM HOURS	STUDENT REGIS	STUDENT SEM HRS	COURSE FTE
		No.	Avg Size				
Hawaiian.....	11	15	11	54	167	609	42
Lower Division.....	4	8	14	34	111	428	29
Upper Division.....	4	4	10	15	40	151	10
Graduate Level.....	3	3	5	5	16	30	3
Hawaiian Studies.....	13	13	19	42	243	723	48
Lower Division.....	6	7	26	20	182	528	35
Upper Division.....	6	5	11	19	58	186	12
Graduate Level.....	1	1	3	3	3	9	1

- 1/ Excludes classes numbered 199, 299, 399, 499 (individual instruction).
- 2/ Formerly called Speech-Communication.
- 3/ In Spring 1999, Teacher Education and Curriculum Studies was added.
- 4/ The College of Hawaiian Language was renamed Ka Haka 'Ula O Ke'elikolani in February 1999.

NOTE: In Spring 2000, data includes continuing education classes.

SOURCES: Computer Report 3011: "Course Registration Summary Report" and
 Computer Report 3011C: "Number of Classes and Average Class Size."

TABLE 2
STUDENT SEMESTER HOURS (SSH) AND COURSE FTE
UNIVERSITY OF HAWAII AT HILO
SPRING 1996 TO SPRING 2000

COLLEGE AND LEVEL	SPRING 1996			SPRING 1997			SPRING 1998			SPRING 1999			SPRING 2000 3/		
	SSH No.	%C	COURSE FTE	SSH No.	%C	COURSE FTE	SSH No.	%C	COURSE FTE	SSH No.	%C	COURSE FTE	SSH No.	%C	COURSE FTE
TOTAL.....	31,621	1	2,106	30,711	-3	2,047	29,984	-2	1,993	30,992	3	2,073	31,819	NA	2,125
Lower Division.....	19,793	4	1,319	19,073	-4	1,269	18,721	-2	1,245	18,939	1	1,263	19,563		1,306
Upper Division.....	11,753	-5	781	11,581	-1	773	11,260	-3	748	11,649	3	776	12,181		812
Graduate Level 1/.....	75	100	6	57	-24	5	3	-95		404	13367	34	75		7
COLL OF AGRICULTURE.....	1,034	-10	68	1,090	5	74	1,184	9	77	1,284	8	85	1,333		89
Lower Division.....	435	-15	29	534	23	35	546	2	35	523	-4	34	500		34
Upper Division.....	599	-6	39	556	-7	39	638	15	42	761	19	51	833		55
COLL OF ARTS & SCIENCES 2a/..	29,163	1	1,944	28,271	-3	1,885	27,461	-3	1,831	28,312	3	1,894	29,154		1,946
Lower Division.....	18,247	4	1,216	17,389	-5	1,159	17,131	-1	1,142	17,402	2	1,161	18,107		1,208
Upper Division.....	10,841	-5	723	10,825	-0	722	10,327	-5	688	10,554	2	703	11,011		735
Graduate Level 1/.....	75		5	57	-24	4	3	-95		356	11767	30	36		3
Business & Economics.....	3,227	-12	215	2,916	-10	192	2,745	-6	183	2,598	-5	174	2,962		199
Lower Division.....	1,614	-12	108	1,230	-24	81	1,218	-1	81	1,296	6	87	1,473		98
Upper Division.....	1,613	-13	107	1,686	5	111	1,527	-9	102	1,302	-15	87	1,489		101
Humanities 2a/.....	7,114	4	474	6,379	-10	425	6,638	4	443	6,649	0	442	6,493		433
Lower Division.....	4,549	13	303	3,753	-17	250	4,619	23	308	4,302	-7	287	4,457		298
Upper Division.....	2,565	-8	171	2,626	2	175	2,019	-23	135	2,347	16	155	2,036		135
Natural Sciences.....	9,422	6	628	9,056	-4	603	8,661	-4	578	8,737	1	583	9,390		625
Lower Division.....	7,335	5	489	7,300	0	486	6,738	-8	450	6,644	-1	443	7,206		480
Upper Division.....	2,087	10	139	1,756	-16	117	1,923	10	128	2,093	9	140	2,184		145
Social Sciences.....	9,295	-2	620	9,860	6	659	9,357	-5	622	10,036	7	676	10,213		683
Lower Division.....	4,701	2	313	5,058	8	338	4,496	-11	299	4,872	8	325	4,875		326
Upper Division.....	4,519	-7	301	4,745	5	316	4,858	2	323	4,808	-1	321	5,302		354
Graduate Level 1/.....	75	100	6	57	-24	5	3	-95		356	11767	30	36		3
General Education.....	105	94	7	60	-43	4	60	0	4	292	387	19	96		6
Lower Division.....	48	100	3	48	0	3	60	25	4	288	380	19	96		6
Upper Division.....	57	6	4	12	-79	1				4	100	0	0		0
KE'ELIKOLANI 2a, 2b/.....	1424	12	95	1350	-5	90	1339	-1	89	1396	4	94	1332		90
Lower Division.....	1111	11	74	1150	4	77	1044	-9	70	1014	-3	68	956		64
Upper Division.....	313	15	21	200	-36	13	295	48	20	334	13	22	337		22
Graduate Level.....										48	100	4	39		4

1/ In Spring 1999, Teacher Education and Curriculum Studies was added which significantly increased Student Semester Hours (SSH) at the graduate level.

2a/ In Fall 1998, the College of Hawaiian Language was formed, consisting of Hawaiian language and Hawaiian Studies courses originally in the College of Arts & Sciences, Humanities Division. The figures have been adjusted to reflect this change.

2b/ The College of Hawaiian Language was renamed Ka Haka 'Ula O Ke'elikolani in February 1999.

3/ In Spring 2000, data includes continuing education classes, and therefore, percentage changes are not comparable with prior year.

SOURCE: Computer Report 3011: "Course Registration Summary Report;" University of Hawai'i at Hilo.

TABLE 3
NUMBER OF CLASSES AND AVERAGE CLASS SIZE 1/
UNIVERSITY OF HAWAII AT HILO
SPRING 1996 TO SPRING 2000

COLLEGE AND LEVEL	SPRING 1996		SPRING 1997		SPRING 1998		SPRING 1999		SPRING 2000 3/	
	No. of Classes	Avg Size	No. of Classes	Avg Size	No. of Classes	Avg Size	No. of Classes	Avg Size	No. of Classes	Avg Size
TOTAL.....	508	22	520	21	537	20	542	20	537	20
Lower Division.....	280	25	285	24	286	24	292	24	294	24
Upper Division.....	227	17	234	17	251	15	241	16	238	17
Graduate Level.....	1	25	1	19			9	23	5	6
COLL OF AGRICULTURE.....	33	11	33	12	34	13	31	15	31	17
Lower Division.....	13	12	12	19	11	21	9	24	7	37
Upper Division.....	20	10	21	8	23	9	22	11	24	11
COLL OF ARTS & SCIENCES 2a/.....	453	23	465	21	477	20	484	21	478	21
Lower Division.....	254	26	256	24	260	24	267	24	272	24
Upper Division.....	198	18	208	17	217	16	210	17	205	18
Graduate Level.....	1	25	1	19			7	28	1	12
Business & Economics.....	50	21	49	20	46	20	44	20	44	22
Lower Division.....	21	26	20	21	17	24	18	24	17	29
Upper Division.....	29	18	29	19	29	17	26	17	27	18
Humanities 2a/.....	123	19	131	16	131	17	129	17	121	18
Lower Division.....	74	20	73	17	81	19	77	19	81	18
Upper Division.....	49	18	58	15	50	14	52	15	40	17
Natural Sciences.....	154	23	153	22	162	21	172	20	177	20
Lower Division.....	101	28	105	26	106	25	109	24	115	23
Upper Division.....	53	13	48	14	56	13	63	12	62	13
Social Sciences.....	124	26	131	26	137	24	133	26	133	25
Lower Division.....	57	31	57	33	55	30	57	32	56	31
Upper Division.....	66	21	73	21	82	19	69	22	76	21
Graduate Level.....	1	25	1	19			7	28	1	12
General Education.....	2	15	1	16	1	20	6	15	3	11
Lower Division.....	1	16	1	16	1	20	6	15	3	11
Upper Division.....	1	14								
KE'ELIKOLANI 2a, 2b/.....	22	18	22	18	26	15	27	16	28	15
Lower Division.....	13	23	17	19	15	19	16	19	15	19
Upper Division.....	9	10	5	12	11	9	9	11	9	11
Graduate Level.....							2	8	4	5

1/ Excludes classes numbered 199, 299, 399, 499 (individual instruction).

2a/ In Fall 1998, the College of Hawaiian Language was formed, consisting of Hawaiian language and Hawaiian Studies courses originally College of Arts & Sciences, Humanities Division. The figures have been adjusted to reflect this change.

2b/ The College of Hawaiian Language was renamed Ka Haka 'Ula O Ke'elikolani in February 1999.

3/ In Spring 2000, data includes continuing education classes.

SOURCE: Computer Report 3011C: "Number of Classes and Average Class Size", University of Hawai'i at Hilo.

APPENDIX A
 COURSE REGISTRATION AND AVERAGE CLASS SIZE SUMMARY
 UNIVERSITY OF HAWAI'I CENTER, WEST HAWAI'I
 SPRING 2000

COURSE OFFERING AND LEVEL	COURSES	CLASSES*		SEM HRS	STUDENT REGIS	STUDENT SEM HRS	COURSE FTE
		No.	Avg Size				
TOTAL.....	7	6	10	18	59	180	12
Upper Division.....	7	6	10	18	59	180	12
UH - HILO	7	6	10	18	59	180	12
Upper Division.....	7	6	10	18	59	180	12
College of Arts & Sciences	7	6	10	18	59	180	12
Upper Division.....	7	6	10	18	59	180	12
Social Sciences.....	7	6	10	18	59	180	12
Upper Division.....	7	6	10	18	59	180	12
Sociology.....	7	6	10	18	59	180	12
Upper Division.....	7	6	10	18	59	180	12

* Excludes 93 (Cooperative Education) and 99 (Individual Instruction) courses.

SOURCES: Computer Report 3011: "Course Registration Summary Report", UH Hilo.
 Computer Report 3011C: "Number of Classes and Average Class Size", UH Hilo.

Note: Computer reports for Hawaii CC portion were not generated due to computer problems and therefore data is not available.