

COURSE REGISTRATION REPORT
UNIVERSITY OF HAWAI'I AT HILO
SPRING 2005

Institutional Research Office
University of Hawai'i
September 2008

File Reference: Management and Planning Support Folder, Courses

Reports available online at: <http://www.hawaii.edu/iro/maps.htm>

COURSE REGISTRATION REPORT
UNIVERSITY OF HAWAI'I AT HILO

University of Hawai'i at Hilo - Spring Semesters

Figure 1 Student Semester Hours (SSH)

Figure 2 Course FTE

Figure 3 Average Class Size

Table 1 Course Registration Summary, By Course Offering

Table 2 Course Registration Summary, By Course Level

Table 3 Student Semester Hours (SSH) and Course FTE

Table 4 Number of Classes and Average Class Size

University of Hawai'i at Hilo, Spring Semesters

Figure 1: Student Semester Hours (SSH)

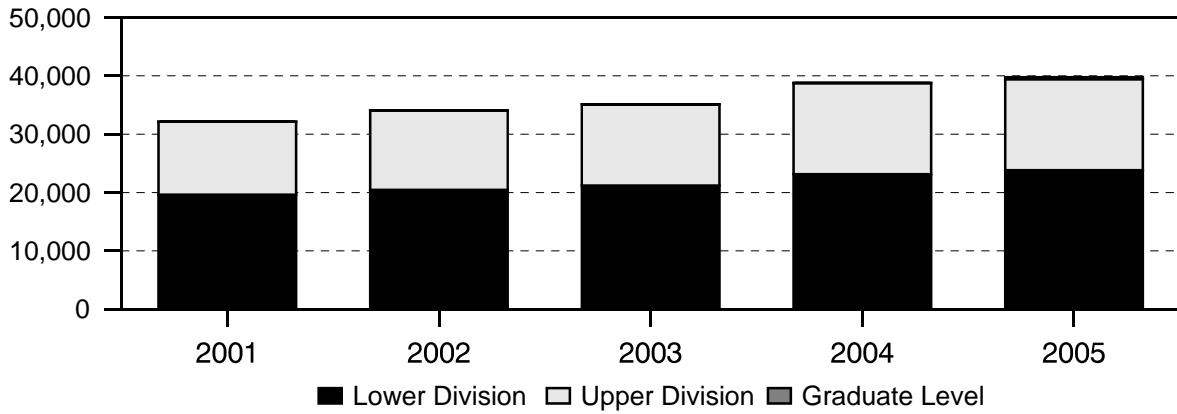


Figure 2: Course FTE

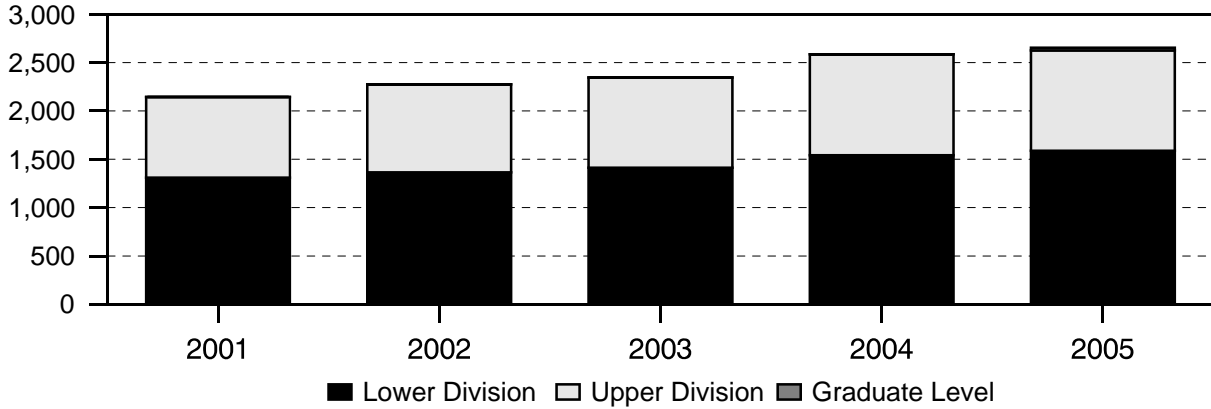
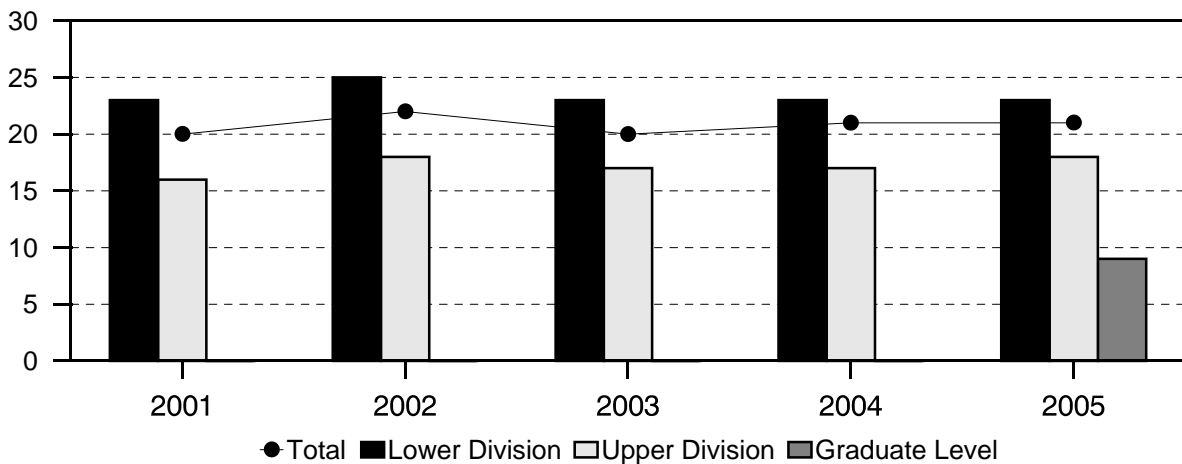


Figure 3: Average Class Size



NOTE: Prior to Spring 2005, graduate level data are not shown due to the small number of graduate courses.

Table 1
Course Registration Summary, By Course Offering
 University of Hawai'i at Hilo
 Spring 2005

COURSE OFFERING	COURSES	CLASSES		SEMESTER HOURS	STUDENT REGIS	STUDENT SEM HRS	COURSE FTE
		No.	Avg Size				
TOTAL	540	672	21	1,887	14,016	39,760	2,655
Lower Division	216	378	23	1,035	8,571	23,827	1,587
Upper Division	306	281	18	819	5,311	15,589	1,038
Graduate Level	18	13	9	33	134	344	30
Coll of Agr, For & Nat Res Mgt	34	32	14	91	452	1,228	80
Lower Division	11	10	20	28	202	515	33
Upper Division	23	22	11	63	250	713	47
Agriculture	8	6	21	15	132	282	18
Lower Division	4	3	26	7	82	155	10
Upper Division	4	3	15	8	50	127	8
Agricultural Business	2	2	9	6	17	51	3
Lower Division	1	1	11	3	11	33	2
Upper Division	1	1	6	3	6	18	1
Agricultural Economics	1	1	14	3	14	42	3
Lower Division	1	1	14	3	14	42	3
Agricultural Engineering	2	2	8	6	16	48	3
Lower Division	1	1	7	3	7	21	1
Upper Division	1	1	9	3	9	27	2
Animal Science	6	6	17	18	100	300	20
Lower Division	2	2	25	6	49	147	10
Upper Division	4	4	13	12	51	153	10
Aquaculture	4	4	11	10	43	115	7
Lower Division	1	1	22	3	22	66	4
Upper Division	3	3	7	7	21	49	3
Entomology	3	3	9	9	28	84	6
Upper Division	3	3	9	9	28	84	6
Horticulture	6	6	12	18	73	219	14
Lower Division	1	1	17	3	17	51	3
Upper Division	5	5	11	15	56	168	11
Plant Pathology	1	1	15	3	15	45	3
Upper Division	1	1	15	3	15	45	3
Soil Science	1	1	14	3	14	42	3
Upper Division	1	1	14	3	14	42	3
College of Arts & Sciences	451	577	21	1,557	12,169	34,061	2,278
Lower Division	188	334	23	856	7,621	20,804	1,388
Upper Division	247	231	18	669	4,423	12,925	861
Graduate Level	16	12	9	32	125	332	29
Humanities	155	180	18	512	3,375	10,025	670
Lower Division	77	118	20	342	2,314	6,957	464
Upper Division	72	57	17	155	1,019	2,944	195
Graduate Level	6	5	8	15	42	124	11
Art	13	12	23	36	288	864	58
Lower Division	9	10	24	30	238	714	48
Upper Division	4	2	21	6	50	150	10
China-US Relations	3	3	9	9	26	78	7
Graduate Level	3	3	9	9	26	78	7
Communication	16	21	27	63	580	1,740	116

Lower Division	7	14	25	42	355	1,065	71
Upper Division	9	7	29	21	225	675	45
Dance	7	6	23	13	141	330	22
Lower Division	4	4	27	9	109	264	18
COURSE OFFERING	COURSES	CLASSES		SEMESTER HOURS	STUDENT REGIS	STUDENT SEM HRS	COURSE FTE
		No.	Avg Size				
Upper Division	3	2	14	4	32	66	4
Drama & Theatre	8	9	9	22	84	243	16
Lower Division	2	2	14	5	27	80	5
Upper Division	6	7	8	17	57	163	11
English	25	38	18	114	693	2,077	138
Lower Division	8	23	20	69	450	1,350	90
Upper Division	17	15	16	45	243	727	48
English as a Second Language	13	15	14	45	213	639	43
Lower Division	13	15	14	45	213	639	43
Foreign Languages	14	15	9	58	149	556	36
Lower Division	10	13	9	52	124	489	32
Upper Division	4	2	10	6	25	67	4
Chinese	2	3	4	12	13	52	3
Lower Division	2	3	4	12	13	52	3
Japanese	6	7	9	26	67	240	16
Lower Division	3	5	9	20	45	180	12
Upper Division	3	2	10	6	22	60	4
French	2	2	14	8	27	108	7
Lower Division	2	2	14	8	27	108	7
Spanish	4	3	12	12	42	156	10
Lower Division	3	3	12	12	39	149	10
Upper Division	1				3	7	
Hawaiian Studies	15	18	20	49	364	1,045	71
Lower Division	6	11	26	32	281	837	56
Upper Division	6	5	13	11	67	162	11
Graduate Level	3	2	7	6	16	46	4
Honors	1	1	12	3	12	36	2
Lower Division	1	1	12	3	12	36	2
Japanese Studies	1				3	5	
Upper Division	1				3	5	
Linguistics	7	5	23	15	128	379	25
Lower Division	2	2	33	6	66	196	13
Upper Division	5	3	17	9	62	183	12
Music	15	19	12	31	235	656	44
Lower Division	9	14	13	22	188	534	36
Upper Division	6	5	9	9	47	122	8
Philosophy	13	15	25	45	374	1,122	75
Lower Division	4	7	27	21	190	570	38
Upper Division	9	8	23	24	184	552	37
Religious Studies	4	3	28	9	85	255	17
Lower Division	2	2	31	6	61	183	12
Upper Division	2	1	22	3	24	72	5
Natural Sciences	156	233	20	540	4,626	11,788	789
Lower Division	73	152	22	344	3,403	8,609	574
Upper Division	77	77	15	184	1,175	3,039	203
Graduate Level	6	4	10	12	48	140	12
Biological Sciences	32	46	24	83	1,138	2,510	168
Lower Division	20	36	25	62	919	2,004	134
Upper Division	12	10	20	21	219	506	34
Biology	32	46	24	83	1,138	2,510	168

COURSE OFFERING	COURSES	CLASSES		SEMESTER HOURS	STUDENT REGIS	STUDENT SEM HRS	COURSE FTE
		No.	Avg Size				
Lower Division	20	36	25	62	919	2,004	134
Upper Division	12	10	20	21	219	506	34
Chemistry & Biochem	16	33	20	49	667	1,273	85
Lower Division	9	27	23	37	608	1,142	76
Upper Division	7	6	9	12	59	131	9
Chemistry	16	33	20	49	667	1,273	85
Lower Division	9	27	23	37	608	1,142	76
Upper Division	7	6	9	12	59	131	9
Computer Science	16	25	17	71	423	1,224	82
Lower Division	9	18	17	54	304	910	61
Upper Division	7	7	17	17	119	314	21
Geology	10	11	21	29	231	635	42
Lower Division	7	9	23	23	204	556	37
Upper Division	3	2	13	6	27	79	5
Marine Science	16	25	17	58	432	1,109	74
Lower Division	5	14	16	30	222	527	35
Upper Division	11	11	19	28	210	582	39
Mathematics	21	35	22	112	791	2,581	172
Lower Division	12	28	24	93	677	2,253	150
Upper Division	9	7	15	19	114	328	22
Nursing	14	22	13	55	290	748	50
Upper Division	14	22	13	55	290	748	50
Physics & Astronomy	25	32	19	71	606	1,568	104
Lower Division	11	20	23	45	469	1,217	81
Upper Division	14	12	11	26	137	351	23
Astronomy	12	10	21	22	211	599	40
Lower Division	5	5	31	13	153	433	29
Upper Division	7	5	11	9	58	166	11
Physics	13	22	18	49	395	969	64
Lower Division	6	15	21	32	316	784	52
Upper Division	7	7	11	17	79	185	12
Trop Conserv Biol & EnvironSci	6	4	10	12	48	140	12
Graduate Level	6	4	10	12	48	140	12
Social Sciences	140	164	25	505	4,168	12,248	819
Lower Division	38	64	30	170	1,904	5,238	350
Upper Division	98	97	22	330	2,229	6,942	463
Graduate Level	4	3	11	5	35	68	6
Anthropology	17	20	27	63	539	1,610	108
Lower Division	5	9	38	27	344	1,028	69
Upper Division	12	11	17	36	195	582	39
Education	35	38	20	89	803	2,115	143
Lower Division	12	13	22	17	284	402	27
Upper Division	19	22	21	67	484	1,645	110
Graduate Level	4	3	11	5	35	68	6
Education	13	17	18	48	311	1,089	74
Upper Division	9	14	20	43	276	1,021	68
Graduate Level	4	3	11	5	35	68	6
Health & Physical Education	22	21	22	41	492	1,026	69
Lower Division	12	13	22	17	284	402	27
Upper Division	10	8	24	24	208	624	42
COURSE OFFERING	COURSES	CLASSES		SEMESTER HOURS	STUDENT REGIS	STUDENT SEM HRS	COURSE FTE
		No.	Avg Size				
Geography	15	18	27	54	494	1,482	99

Lower Division	5	9	37	27	329	987	66
Upper Division	10	9	18	27	165	495	33
History	12	13	23	39	298	894	60
Lower Division	2	4	25	12	100	300	20
Upper Division	10	9	22	27	198	594	40
Occupational Safety & Health	1	1	13	3	13	39	3
Upper Division	1	1	13	3	13	39	3
Political Science	18	20	22	90	445	1,386	92
Lower Division	4	6	31	18	186	558	37
Upper Division	14	14	18	72	259	828	55
Psychology	26	34	28	110	990	3,094	206
Lower Division	4	12	27	42	326	1,094	73
Upper Division	22	22	29	68	664	2,000	133
Sociology	14	18	29	51	516	1,418	94
Lower Division	5	9	30	21	266	662	44
Upper Division	9	9	28	30	250	756	50
Women's Studies	2	2	35	6	70	210	14
Lower Division	1	2	35	6	69	207	14
Upper Division	1				1	3	
Coll Of Business & Economics	42	44	27	132	1,189	3,567	237
Lower Division	9	19	31	57	589	1,767	117
Upper Division	33	25	24	75	600	1,800	120
Accounting	5	7	22	21	151	453	30
Lower Division	2	4	26	12	105	315	21
Upper Division	3	3	15	9	46	138	9
Business	1	4	39	12	157	471	31
Lower Division	1	4	39	12	157	471	31
Economics	11	14	25	42	355	1,065	71
Lower Division	4	8	30	24	236	708	47
Upper Division	7	6	20	18	119	357	24
Finance	5	3	26	9	81	243	16
Upper Division	5	3	26	9	81	243	16
Management	8	7	28	21	200	600	40
Lower Division	1	2	28	6	55	165	11
Upper Division	7	5	28	15	145	435	29
Marketing	5	4	23	12	92	276	18
Upper Division	5	4	23	12	92	276	18
Quantitative Business Analysis	5	4	35	12	140	420	28
Lower Division	1	1	36	3	36	108	7
Upper Division	4	3	34	9	104	312	21
Tourism	2	1	12	3	13	39	3
Upper Division	2	1	12	3	13	39	3
General Education	4	7	4	62	31	317	21
Lower Division	4	7	4	62	31	317	21
Natl Student Exch & Study Abroad	4	7	4	62	31	317	21
Lower Division	4	7	4	62	31	317	21
National Student Exchange	2	5	5	49	26	268	18
Lower Division	2	5	5	49	26	268	18
Study Abroad	2	2	3	13	5	49	3
COURSE OFFERING	COURSES	CLASSES		SEMESTER HOURS	STUDENT REGIS	STUDENT SEM HRS	COURSE FTE
		No.	Avg Size				
Lower Division	2	2	3	13	5	49	3
Keelikolani, Coll of Hawaiian Lang	9	12	14	45	175	587	39
Lower Division	4	8	16	32	128	424	28
Upper Division	3	3	12	12	38	151	10
Graduate Level	2	1	6	1	9	12	1

Hawaiian	9	12	14	45	175	587	39
Lower Division	4	8	16	32	128	424	28
Upper Division	3	3	12	12	38	151	10
Graduate Level	2	1	6	1	9	12	1

1/ Number of classes and average class size exclude courses numbered -99 (Individual Instruction) and 700 (Thesis Research).

2/ The College of Business and Economics was established effective January 2004. Formerly called School of Business and a functional division within the College Arts and Sciences.

3/ Hawaiian Studies was misplaced under College of Arts and Sciences instead of Ka Haka `Ula O Ke`elikolani, College of Hawaiian Language.

Aggregate data for Ka Haka `Ula O Ke`elikolani, College of Hawaiian Language should include Hawaiian Studies. Counts by colleges will differ from previously published reports.

4/ General Education was incorrectly excluded from College of Arts and Sciences. Aggregate data for College of Arts and Sciences should include General Education. Counts for College of Arts and Sciences will differ from previously published reports.

SERIES: Course Registration Report

SOURCE: Banner Operational Data Store (ODS), IRO_SOCAD, IRO_SOCEX

University of Hawai'i, Institutional Research Office

Table 2
Course Registration Summary, By Course Level
 University of Hawai'i at Hilo
 Spring 2005

Course Level	COURSES	CLASSES	SEMESTER HOURS	STUDENT REGIS	STUDENT SEM HRS
Spring 2005	540	817	1,887	14,016	39,760
000-099	16	20	101	208	848
100-199	107	241	590	5,768	15,617
200-299	93	135	344	2,595	7,362
300-399	186	246	501	3,617	10,725
400-499	120	150	318	1,694	4,864
500-599	1	1	1	2	2
600-800	17	24	32	132	342

1/ Number of classes includes courses numbered -99 (individual instruction) and 700 (thesis research).

SERIES: Course Registration Report

SOURCE: Banner Operational Data Store (ODS), IRO_SOCAD, IRO_SOCEX

University of Hawai'i, Institutional Research Office

© 2005-2008 University of Hawai'i

Table 3
Student Semester Hours (SSH) and Course FTE
 University of Hawai'i at Hilo
 Spring 2005

College and Level	Spring 2005	
	SSH	COURSE
	No.	FTE
TOTAL	39,760	2,655
Lower Division	23,827	1,587
Upper Division	15,589	1,038
Graduate Level	344	30
Coll of Agr, For & Nat Res Mgt	1,228	80
Lower Division	515	33
Upper Division	713	47
College of Arts & Sciences	34,061	2,278
Lower Division	20,804	1,388
Upper Division	12,925	861
Graduate Level	332	29
Humanities	10,025	670
Lower Division	6,957	464
Upper Division	2,944	195
Graduate Level	124	11
Natural Sciences	11,788	789
Lower Division	8,609	574
Upper Division	3,039	203
Graduate Level	140	12
Social Sciences	12,248	819
Lower Division	5,238	350
Upper Division	6,942	463
Graduate Level	68	6
Coll Of Business & Economics	3,567	237
Lower Division	1,767	117
Upper Division	1,800	120
General Education	317	21
Lower Division	317	21
Natl Student Exch & Study Abroad	317	21
Lower Division	317	21
Keelikolani, Coll of Hawaiian Lang	587	39
Lower Division	424	28
Upper Division	151	10
Graduate Level	12	1

1/ Percent change between -.49 and 0 is noted as (<1). Percent change between -.9 and -.5 is rounded to -1.

2/ The College of Business and Economics was established effective January 2004. Formerly called School of Business and a functional division within the College of Arts and Sciences.

3/ Prior to Spring 2007, Hawaiian Studies was misplaced under College of Arts and Sciences instead of Ka Haka `Ula O Ke`elikolani, College of Hawaiian Language. Aggregate data for Ka Haka `Ula O Ke`elikolani, College of Hawaiian Language should include Hawaiian Studies. Counts by colleges will differ from previously published reports.

4/ Prior to Spring 2007, General Education was incorrectly excluded from College of Arts and Sciences. Aggregate data for College of Arts and Sciences should include General Education. Counts for College of Arts and Sciences will differ from previously published reports.

SERIES: Course Registration Report

SOURCE: Banner Operational Data Store (ODS), IRO_SOCAD

University of Hawai'i, Institutional Research Office

Table 4
Number of Classes and Average Class Size
 University of Hawai'i at Hilo
 Spring 2005

College and Level	Spring 2005		Avg Size
	No.	%Chg	
TOTAL	672		21
Lower Division	378		23
Upper Division	281		18
Graduate Level	13		9
Coll of Agr, For & Nat Res Mgt	32		14
Lower Division	10		20
Upper Division	22		11
College of Arts & Sciences	577		21
Lower Division	334		23
Upper Division	231		18
Graduate Level	12		9
Humanities	180		18
Lower Division	118		20
Upper Division	57		17
Graduate Level	5		8
Natural Sciences	233		20
Lower Division	152		22
Upper Division	77		15
Graduate Level	4		10
Social Sciences	164		25
Lower Division	64		30
Upper Division	97		22
Graduate Level	3		11
Coll Of Business & Economics	44		27
Lower Division	19		31
Upper Division	25		24
General Education	7		4
Lower Division	7		4
Natl Student Exch & Study Abroad	7		4
Lower Division	7		4
Keelikolani, Coll of Hawaiian Lang	12		14
Lower Division	8		16
Upper Division	3		12
Graduate Level	1		6

1/ Excludes courses numbered -99 (individual instruction) and 700 (thesis research).

2/ Percent change between -.49 and 0 is noted as (<1). Percent change between -.9 and -.5 is rounded to -1.

3/ The College of Business and Economics was established effective January 2004. Formerly called School of Business and a functional division within the College Arts and Sciences.

4/ Prior to Spring 2007, Hawaiian Studies was misplaced under College of Arts and Sciences instead of Ka Haka `Ula O Ke`elikolani, College of Hawaiian Language. Aggregate data for Ka Haka `Ula O Ke`elikolani, College of Hawaiian Language should include Hawaiian Studies. Counts by colleges will differ from previously published reports.

5/ Prior to Spring 2007, General Education was incorrectly excluded from College of Arts and Sciences. Aggregate data for College of Arts and Sciences should include General Education. Counts for College of Arts and Sciences will differ from previously published reports.

SERIES: Course Registration Report

SOURCE: Banner Operational Data Store (ODS), IRO_SOCAD

University of Hawai'i, Institutional Research Office