

**COURSE REGISTRATION REPORT**  
**UNIVERSITY OF HAWAI'I AT HILO**  
**SPRING 2009**

Institutional Research Office  
University of Hawai'i  
May 2009

File Reference: Management and Planning Support Folder, Courses

Reports available online at: <http://www.hawaii.edu/iro>

COURSE REGISTRATION REPORT  
UNIVERSITY OF HAWAI'I AT HILO

University of Hawai'i at Hilo - Spring Semesters

Figure 1 Student Semester Hours (SSH)

Figure 2 Course FTE

Figure 3 Average Class Size

Table 1 Course Registration Summary, By Course Offering

Table 2 Course Registration Summary, By Course Level

Table 3 Student Semester Hours (SSH) and Course FTE

Table 4 Number of Classes and Average Class Size

# University of Hawai'i at Hilo, Spring Semesters

Figure 1: Student Semester Hours (SSH)

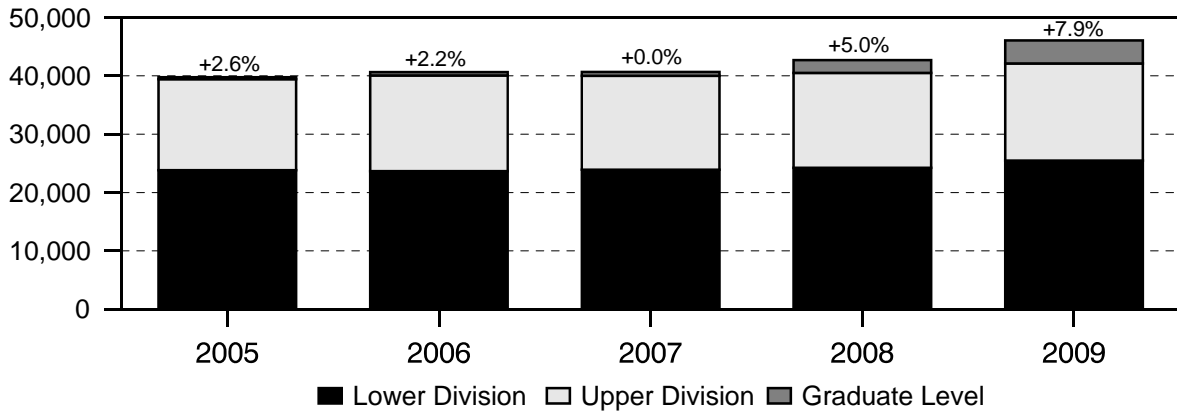


Figure 2: Course FTE

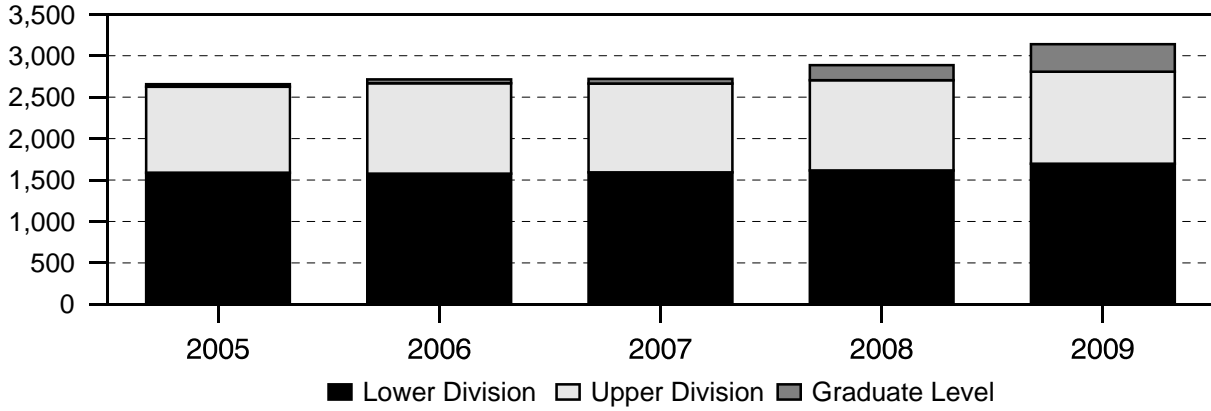
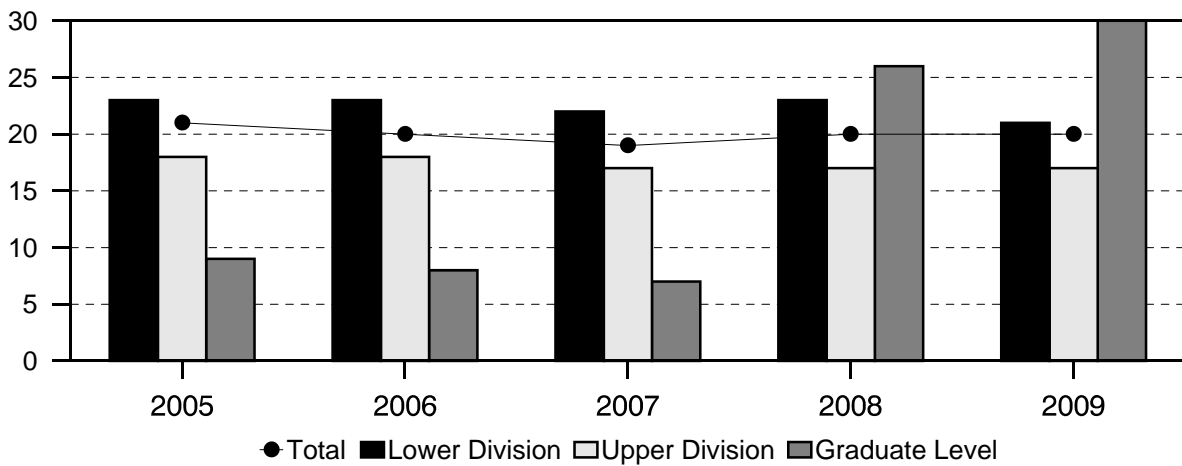


Figure 3: Average Class Size



NOTE: Prior to Spring 2005, graduate level data are not shown due to the small number of graduate courses.

**TABLE 1**  
**Course Registration Summary, By Course Offering**  
 University of Hawai'i at Hilo  
 Spring 2009

CAMPUS AND LEVEL	COURSES	CLASSES		SEMESTER HOURS	STUDENT REGIS	STUDENT SEM HRS	COURSE FTE
		No.	Avg Size				
<b>TOTAL</b>	594	791	20	2,210	16,276	46,075	3,139
Lower Division	230	423	21	1,146	9,103	25,467	1,698
Upper Division	311	320	17	928	5,661	16,634	1,108
Graduate Level	53	48	30	136	1,512	3,974	333
<b>Coll of Agr, For &amp; Nat Res Mgt</b>	40	38	12	110	462	1,346	90
Lower Division	17	17	15	51	252	760	51
Upper Division	23	21	10	59	210	586	39
<b>Agriculture</b>	6	5	15	12	79	200	14
Lower Division	4	4	15	11	60	173	12
Upper Division	2	1	15	1	19	27	2
<b>Agricultural Business</b>	4	3	9	9	29	87	6
Lower Division	1	1	14	3	14	42	3
Upper Division	3	2	7	6	15	45	3
<b>Agricultural Economics</b>	1	1	17	3	17	51	3
Lower Division	1	1	17	3	17	51	3
<b>Agricultural Engineering</b>	2	2	11	6	21	63	4
Lower Division	1	1	16	3	16	48	3
Upper Division	1	1	5	3	5	15	1
<b>Agronomy</b>	1	1	11	3	11	33	2
Upper Division	1	1	11	3	11	33	2
<b>Animal Science</b>	9	9	11	27	99	297	20
Lower Division	3	3	16	9	48	144	10
Upper Division	6	6	9	18	51	153	10
<b>Aquaculture</b>	4	4	14	10	54	148	10
Lower Division	1	1	25	3	25	75	5
Upper Division	3	3	10	7	29	73	5
<b>Entomology</b>	3	3	10	9	31	93	6
Lower Division	1	1	10	3	10	30	2
Upper Division	2	2	11	6	21	63	4
<b>Forestry</b>	1	1	12	3	12	36	2
Lower Division	1	1	12	3	12	36	2
<b>Horticulture</b>	8	8	12	25	94	293	20
Lower Division	4	4	13	13	50	161	11
Upper Division	4	4	11	12	44	132	9
<b>Soil Science</b>	1	1	15	3	15	45	3
Upper Division	1	1	15	3	15	45	3
<b>College of Arts &amp; Sciences</b>	469	642	19	1,767	12,618	35,535	2,382
Lower Division	194	358	21	943	7,689	21,115	1,408
Upper Division	248	260	17	751	4,656	13,641	908
Graduate Level	27	24	10	73	273	779	66
<b>Humanities</b>	128	176	17	485	2,960	8,800	589
Lower Division	70	125	16	340	1,989	5,896	393
Upper Division	53	47	19	135	948	2,837	190
Graduate Level	5	4	5	10	23	67	6
<b>Art</b>	11	15	18	45	275	825	55
Lower Division	7	12	20	36	235	705	47
Upper Division	4	3	12	9	40	120	8
<b>China-US Relations</b>	5	4	5	10	23	67	6
Graduate Level	5	4	5	10	23	67	6
<b>Communication</b>	20	27	28	81	749	2,247	150
Lower Division	6	15	27	45	401	1,203	80
Upper Division	14	12	29	36	348	1,044	70
<b>Dance</b>	6	5	18	15	90	270	18
Lower Division	4	4	19	12	77	231	15
Upper Division	2	1	12	3	13	39	3
<b>Drama &amp; Theatre</b>	9	11	9	25	109	267	18
Lower Division	3	4	14	7	54	108	7

CAMPUS AND LEVEL	COURSES	CLASSES		SEMESTER HOURS	STUDENT REGIS	STUDENT SEM HRS	COURSE FTE	
		No.	Avg Size					
	Upper Division	6	7	6	18	55	159	11
	<b>English</b>	20	37	18	109	705	2,047	137
	Lower Division	11	29	19	85	551	1,585	106
	Upper Division	9	8	17	24	154	462	31
	<b>English as a Second Language</b>	14	17	7	51	123	369	25
	Lower Division	14	17	7	51	123	369	25
	<b>Foreign Languages</b>	15	16	14	60	238	862	57
	Lower Division	10	12	12	48	156	616	41
	Upper Division	5	4	20	12	82	246	16
	<b>Chinese</b>	2	2	10	8	19	76	5
	Lower Division	2	2	10	8	19	76	5
	<b>Japanese</b>	5	8	15	29	121	433	29
	Lower Division	2	5	14	20	70	280	19
	Upper Division	3	3	17	9	51	153	10
	<b>French</b>	2	2	7	8	14	56	4
	Lower Division	2	2	7	8	14	56	4
	<b>Latin</b>	1				7	21	1
	Lower Division	1				7	21	1
	<b>Spanish</b>	5	4	19	15	77	276	18
	Lower Division	3	3	15	12	46	183	12
	Upper Division	2	1	30	3	31	93	6
	<b>Music</b>	16	28	10	41	279	739	49
	Lower Division	11	24	8	32	197	494	33
	Upper Division	5	4	20	9	82	245	16
	<b>Philosophy</b>	12	16	23	48	369	1,107	74
	Lower Division	4	8	24	24	195	585	39
	Upper Division	8	8	22	24	174	522	35
	<b>Natural Sciences</b>	175	261	19	615	4,968	12,600	845
	Lower Division	83	156	22	352	3,498	8,769	586
	Upper Division	86	100	14	250	1,387	3,621	241
	Graduate Level	6	5	10	13	83	210	18
	<b>Biological Sciences</b>	32	44	27	80	1,183	2,676	179
	Lower Division	18	31	29	52	902	2,005	134
	Upper Division	14	13	21	28	281	671	45
	<b>Biology</b>	32	44	27	80	1,183	2,676	179
	Lower Division	18	31	29	52	902	2,005	134
	Upper Division	14	13	21	28	281	671	45
	<b>Chemistry &amp; Biochem</b>	20	38	20	57	760	1,518	101
	Lower Division	11	29	24	39	707	1,421	95
	Upper Division	9	9	6	18	53	97	6
	<b>Chemistry</b>	20	38	20	57	760	1,518	101
	Lower Division	11	29	24	39	707	1,421	95
	Upper Division	9	9	6	18	53	97	6
	<b>Computer Science</b>	17	25	16	71	408	1,174	78
	Lower Division	10	17	18	51	304	912	61
	Upper Division	7	8	13	20	104	262	17
	<b>Engineering</b>	2	2	4	6	8	24	2
	Lower Division	1	1	4	3	4	12	1
	Upper Division	1	1	4	3	4	12	1
	<b>Civil Engineering</b>	2	2	4	6	8	24	2
	Lower Division	1	1	4	3	4	12	1
	Upper Division	1	1	4	3	4	12	1
	<b>Geology</b>	12	13	19	33	249	669	45
	Lower Division	7	8	24	20	188	492	33
	Upper Division	5	5	12	13	61	177	12
	<b>Marine Science</b>	27	36	18	87	639	1,594	106
	Lower Division	11	22	19	50	421	1,023	68
	Upper Division	16	14	15	37	218	571	38
	<b>Mathematics</b>	21	37	19	116	715	2,307	154
	Lower Division	11	29	22	96	631	2,053	137
	Upper Division	10	8	10	20	84	254	17
	<b>Nursing</b>	16	35	15	94	533	1,450	97
	Upper Division	16	35	15	94	533	1,450	97
	<b>Physics &amp; Astronomy</b>	22	26	15	58	390	978	65

CAMPUS AND LEVEL	COURSES	CLASSES		SEMESTER HOURS	STUDENT REGIS	STUDENT SEM HRS	COURSE FTE
		No.	Avg Size				
Lower Division	14	19	18	41	341	851	57
Upper Division	8	7	7	17	49	127	8
<b>Astronomy</b>	10	11	14	27	159	437	29
Lower Division	5	6	20	16	121	343	23
Upper Division	5	5	8	11	38	94	6
<b>Physics</b>	12	15	15	31	231	541	36
Lower Division	9	13	17	25	220	508	34
Upper Division	3	2	5	6	11	33	2
<b>Trop Conserv Biol &amp; EnvironSci</b>	6	5	10	13	83	210	18
Graduate Level	6	5	10	13	83	210	18
<b>Social Sciences</b>	159	196	23	606	4,570	13,550	909
Lower Division	34	68	31	190	2,082	5,865	390
Upper Division	109	113	20	366	2,321	7,183	477
Graduate Level	16	15	11	50	167	502	42
<b>Anthropology</b>	19	23	25	70	576	1,741	116
Lower Division	4	10	35	30	354	1,062	71
Upper Division	15	13	17	40	222	679	45
<b>Education</b>	40	46	20	115	931	2,472	168
Lower Division	10	10	26	14	261	394	26
Upper Division	22	28	20	85	572	1,864	124
Graduate Level	8	8	12	16	98	214	18
<b>Education</b>	21	28	16	77	454	1,432	99
Upper Division	13	20	18	61	356	1,218	81
Graduate Level	8	8	12	16	98	214	18
<b>Kinesiology &amp; Exercise Science</b>	19	18	26	38	477	1,040	69
Lower Division	10	10	26	14	261	394	26
Upper Division	9	8	27	24	216	646	43
<b>Environmental Science</b>	1	1	45	3	45	135	9
Lower Division	1	1	45	3	45	135	9
<b>Geography</b>	17	21	24	63	508	1,524	101
Lower Division	3	8	35	24	281	843	56
Upper Division	14	13	17	39	227	681	45
<b>History</b>	16	23	22	69	517	1,551	103
Lower Division	3	12	28	36	335	1,005	67
Upper Division	13	11	16	33	182	546	36
<b>Political Science</b>	16	18	20	78	362	1,135	75
Lower Division	4	5	29	15	146	438	29
Upper Division	12	13	16	63	216	697	46
<b>Psychology</b>	32	42	24	146	1,033	3,296	224
Lower Division	3	12	31	42	367	1,207	80
Upper Division	21	23	25	70	597	1,801	120
Graduate Level	8	7	9	34	69	288	24
<b>Sociology</b>	15	18	28	50	510	1,432	96
Lower Division	5	8	30	20	236	610	41
Upper Division	10	10	27	30	274	822	55
<b>Women's Studies</b>	3	4	22	12	88	264	17
Lower Division	1	2	29	6	57	171	11
Upper Division	2	2	16	6	31	93	6
<b>General Education</b>	7	9	13	61	120	585	39
Lower Division	7	9	13	61	120	585	39
<b>Interdisciplinary Studies</b>	4	4	20	12	79	192	13
Lower Division	4	4	20	12	79	192	13
<b>Natl Student Exch &amp; Study Abroad</b>	3	5	8	49	41	393	26
Lower Division	3	5	8	49	41	393	26
<b>National Student Exchange</b>	1	3	7	36	20	240	16
Lower Division	1	3	7	36	20	240	16
<b>Study Abroad</b>	2	2	11	13	21	153	10
Lower Division	2	2	11	13	21	153	10
<b>Coll Of Business &amp; Economics</b>	37	47	24	141	1,152	3,456	230
Lower Division	8	19	29	57	560	1,680	111
Upper Division	29	28	21	84	592	1,776	119
<b>Accounting</b>	5	7	24	21	170	510	34
Lower Division	2	4	32	12	127	381	25

CAMPUS AND LEVEL	COURSES	CLASSES		SEMESTER HOURS	STUDENT REGIS	STUDENT SEM HRS	COURSE FTE
		No.	Avg Size				
Upper Division	3	3	14	9	43	129	9
<b>Business</b>	3	8	25	24	201	603	40
Lower Division	2	7	27	21	192	576	38
Upper Division	1	1	9	3	9	27	2
<b>Economics</b>	9	13	25	39	323	969	65
Lower Division	3	7	31	21	214	642	43
Upper Division	6	6	18	18	109	327	22
<b>Finance</b>	3	3	26	9	78	234	16
Upper Division	3	3	26	9	78	234	16
<b>Management</b>	7	6	21	18	126	378	25
Upper Division	7	6	21	18	126	378	25
<b>Marketing</b>	4	4	22	12	86	258	17
Upper Division	4	4	22	12	86	258	17
<b>Quantitative Business Analysis</b>	5	5	29	15	143	429	28
Lower Division	1	1	27	3	27	81	5
Upper Division	4	4	29	12	116	348	23
<b>Tourism</b>	1	1	25	3	25	75	5
Upper Division	1	1	25	3	25	75	5
<b>College of Pharmacy</b>	17	18	66	41	1,194	3,038	254
Graduate Level	17	18	66	41	1,194	3,038	254
<b>Pharmaceutical Science</b>	9	9	69	19	619	1,507	126
Graduate Level	9	9	69	19	619	1,507	126
<b>Pharmacy Practice</b>	8	9	64	22	575	1,531	128
Graduate Level	8	9	64	22	575	1,531	128
<b>Keelikolani, Coll of Hawaiian Lang</b>	31	46	18	151	850	2,700	183
Lower Division	11	29	21	95	602	1,912	128
Upper Division	11	11	18	34	203	631	42
Graduate Level	9	6	5	22	45	157	13
<b>Education-Keelikolani</b>	4	3	7	15	25	111	9
Graduate Level	4	3	7	15	25	111	9
<b>Hawaiian</b>	10	17	14	61	248	906	61
Lower Division	4	11	15	42	170	640	43
Upper Division	3	4	16	15	62	230	15
Graduate Level	3	2	4	4	16	36	3
<b>Hawaiian Studies</b>	12	20	20	57	391	1,127	76
Lower Division	6	15	23	44	341	999	67
Upper Division	5	4	12	10	47	119	8
Graduate Level	1	1	3	3	3	9	1
<b>Indigenous Studies-Keelikolani</b>	1				1	1	
Graduate Level	1				1	1	
<b>Linguistics</b>	4	6	31	18	185	555	37
Lower Division	1	3	30	9	91	273	18
Upper Division	3	3	31	9	94	282	19

- 1/ Number of classes and average class size exclude courses numbered -99 (Individual Instruction) and 700 (Thesis Research).
- 2/ The College of Business and Economics was established effective January 2004. Formerly called School of Business and a functional division within the College Arts and Sciences.
- 3/ The creation of a College of Pharmacy at UH-Hilo, in concept, was approved by the Board of Regents in October 2004.
- 4/ Effective Fall 2008, the BA in Linguistics program was moved organizationally from the College of Arts and Sciences to Ka Haka `Ula O Ke`elikolani, College of Hawaiian Language.
- 5/ Students registered in Administration of Justice courses meet at Hawai`i Community College.

SERIES: Course Registration Report

SOURCE: Banner Operational Data Store (ODS), IRO\_SOCAD, IRO\_SOCEX

University of Hawai`i, Institutional Research Office

**TABLE 2**  
**Course Registration Summary, By Course Level**  
 University of Hawai'i at Hilo  
 Spring 2009

Course Level	COURSES	CLASSES	SEMESTER HOURS	STUDENT REGIS	STUDENT SEM HRS
<b>Spring 2005</b>	540	817	1,887	14,016	39,760
000-099	16	20	101	208	848
100-199	107	241	590	5,768	15,617
200-299	93	135	344	2,595	7,362
300-399	186	246	501	3,617	10,725
400-499	120	150	318	1,694	4,864
500-599	1	1	1	2	2
600-800	17	24	32	132	342
<b>Spring 2006</b>	546	823	1,970	14,232	40,638
000-099	16	20	103	221	940
100-199	111	241	600	5,760	15,465
200-299	88	125	332	2,524	7,262
300-399	174	222	530	3,668	10,946
400-499	130	166	347	1,846	5,451
500-599	2	2	2	4	4
600-800	25	47	56	209	570
<b>Spring 2007</b>	555	846	2,020	14,156	40,656
000-099	15	19	91	220	935
100-199	115	253	641	5,791	15,790
200-299	84	133	344	2,509	7,198
300-399	175	227	528	3,597	10,712
400-499	135	164	351	1,809	5,353
500-599	2	2	2	2	2
600-800	29	48	63	228	666
<b>Spring 2008</b>	555	837	2,048	15,060	42,694
000-099	14	19	98	185	779
100-199	110	245	613	6,059	16,198
200-299	84	130	354	2,500	7,251
300-399	172	214	534	3,601	10,709
400-499	141	168	369	1,913	5,563
500-599	9	9	20	536	1,422
600-800	25	52	60	266	772
<b>Spring 2009</b>	594	905	2,210	16,276	46,075
000-099	15	20	94	135	675
100-199	117	266	666	6,226	17,047
200-299	98	147	386	2,742	7,745
300-399	178	221	547	3,618	10,721
400-499	133	169	381	2,043	5,913
500-599	20	21	44	1,199	3,043
600-800	33	61	92	313	931

1/ Number of classes includes courses numbered -99 (individual instruction) and 700 (thesis research).

SERIES: Course Registration Report

SOURCE: Banner Operational Data Store (ODS), IRO\_SOCAD, IRO\_SOCEX

University of Hawai'i, Institutional Research Office



**TABLE 3**  
**Student Semester Hours (SSH) and Course FTE**  
 University of Hawai'i at Hilo  
 Spring 2005 to Spring 2009

College and Level	Spring 2005			Spring 2006			Spring 2007			Spring 2008			Spring 2009		
	SSH		COURSE	SSH		COURSE	SSH		COURSE	SSH		COURSE	SSH		COURSE
	No.	%C	FTE	No.	%C	FTE	No.	%C	FTE	No.	%C	FTE	No.	%C	FTE
<b>TOTAL</b>	39,760		2,655	40,638	2	2,715	40,656	<1	2,721	42,694	5	2,886	46,075	8	3,139
Lower Division	23,827		1,587	23,667	-1	1,576	23,923	1	1,592	24,228	1	1,615	25,467	5	1,698
Upper Division	15,589		1,038	16,397	5	1,092	16,065	-2	1,072	16,272	1	1,088	16,634	2	1,108
Graduate Level	344		30	574	67	47	668	16	57	2,194	228	183	3,974	81	333
<b>Coll of Agr, For &amp; Nat Res Mgt</b>	1,228		80	1,260	3	85	1,203	-5	79	1,170	-3	79	1,346	15	90
Lower Division	515		33	617	20	42	447	-28	29	571	28	37	760	33	51
Upper Division	713		47	643	-10	43	756	18	50	599	-21	42	586	-2	39
<b>College of Arts &amp; Sciences</b>	34,061		2,278	34,364	1	2,298	34,259	(<1)	2,292	34,808	2	2,333	35,535	2	2,382
Lower Division	20,804		1,388	20,439	-2	1,362	20,557	1	1,369	20,525	(<1)	1,369	21,115	3	1,408
Upper Division	12,925		861	13,388	4	892	13,129	-2	875	13,568	3	905	13,641	1	908
Graduate Level	332		29	537	62	44	573	7	48	715	25	59	779	9	66
<b>Humanities</b>	10,025		670	9,761	-3	652	9,043	-7	603	9,034	(<1)	602	8,800	-3	589
Lower Division	6,957		464	6,620	-5	440	5,927	-10	395	5,849	-1	390	5,896	1	393
Upper Division	2,944		195	2,992	2	200	3,033	1	201	3,121	3	207	2,837	-9	190
Graduate Level	124		11	149	20	12	83	-44	7	64	-23	5	67	5	6
<b>Natural Sciences</b>	11,788		789	11,976	2	801	12,036	1	805	11,956	-1	804	12,600	5	845
Lower Division	8,609		574	8,561	-1	571	8,749	2	582	8,543	-2	570	8,769	3	586
Upper Division	3,039		203	3,278	8	219	3,090	-6	207	3,165	2	213	3,621	14	241
Graduate Level	140		12	137	-2	11	197	44	16	248	26	21	210	-15	18
<b>Social Sciences</b>	12,248		819	12,627	3	845	12,744	1	855	13,292	4	892	13,550	2	909
Lower Division	5,238		350	5,258	<1	351	5,446	4	363	5,607	3	374	5,865	5	390
Upper Division	6,942		463	7,118	3	473	7,005	-2	467	7,282	4	485	7,183	-1	477
Graduate Level	68		6	251	269	21	293	17	25	403	38	33	502	25	42
<b>General Education</b>							436		29	526	21	35	585	11	39
Lower Division							435		29	526	21	35	585	11	39
Upper Division							1		< .5						
<b>Coll Of Business &amp; Economics</b>	3,567		237	3,730	5	246	3,480	-7	233	3,300	-5	220	3,456	5	230
Lower Division	1,767		117	1,689	-4	111	1,569	-7	104	1,641	5	110	1,680	2	111
Upper Division	1,800		120	2,041	13	135	1,911	-6	129	1,659	-13	110	1,776	7	119
<b>College of Pharmacy</b>										1,416		118	3,038	115	254
Graduate Level										1,416		118	3,038	115	254
<b>General Education</b>	317		21	496	56	33									
Lower Division	317		21	496	56	33									
<b>Natl Student Exch &amp; Study Abroad</b>	317		21	373	18	24									
Lower Division	317		21	373	18	24									
<b>Keelikolani, Coll of Hawaiian Lang</b>	587		39	788	34	53	1,714	118	117	2,000	17	136	2,700	35	183
Lower Division	424		28	426	<1	28	1,350	217	90	1,491	10	99	1,912	28	128
Upper Division	151		10	325	115	22	269	-17	18	446	66	31	631	41	42
Graduate Level	12		1	37	208	3	95	157	9	63	-34	6	157	149	13

1/ Percent change between -.49 and 0 is noted as (<1). Percent change between -.9 and -.5 is rounded to -1.

2/ The College of Business and Economics was established effective January 2004. Formerly called School of Business and a functional division within the College of Arts and Sciences.

3/ Prior to Spring 2007, Hawaiian Studies was misplaced under College of Arts and Sciences instead of Ka Haka `Ula O Ke`elikolani, College of Hawaiian Language. Aggregate data for Ka Haka `Ula O Ke`elikolani, College of Hawaiian Language should include Hawaiian Studies. Counts by colleges will differ from previously published reports.

- 4/ Prior to Spring 2007, General Education was incorrectly excluded from College of Arts and Sciences. Aggregate data for College of Arts and Sciences should include General Education. Counts for College of Arts and Sciences will differ from previously published reports.
- 5/ The creation of a College of Pharmacy at UH-Hilo, in concept, was approved by the Board of Regents in October 2004.

SERIES: Course Registration Report

SOURCE: Banner Operational Data Store (ODS), IRO\_SOCAD

University of Hawai'i, Institutional Research Office

**TABLE 4**  
**Number of Classes and Average Class Size**  
 University of Hawai'i at Hilo  
 Spring 2005 to Spring 2009

College and Level	Spring 2005			Spring 2006			Spring 2007			Spring 2008			Spring 2009		
	Classes		Avg	Classes		Avg	Classes		Avg	Classes		Avg	Classes		Avg
	No.	%C	Size	No.	%C	Size	No.	%C	Size	No.	%C	Size	No.	%C	Size
<b>TOTAL</b>	672		21	693	3	20	725	5	19	730	1	20	791	8	20
Lower Division	378		23	371	-2	23	395	6	22	388	-2	23	423	9	21
Upper Division	281		18	300	7	18	303	1	17	313	3	17	320	2	17
Graduate Level	13		9	22	69	8	27	23	7	29	7	26	48	66	30
<b>Coll of Agr, For &amp; Nat Res Mgt</b>	32		14	33	3	12	31	-6	12	32	3	12	38	19	12
Lower Division	10		20	13	30	15	10	-23	15	12	20	16	17	42	15
Upper Division	22		11	20	-9	10	21	5	11	20	-5	10	21	5	10
<b>College of Arts &amp; Sciences</b>	577		21	586	2	21	608	4	20	603	-1	20	642	6	19
Lower Division	334		23	320	-4	24	343	7	22	329	-4	23	358	9	21
Upper Division	231		18	245	6	18	242	-1	18	254	5	18	260	2	17
Graduate Level	12		9	21	75	8	23	10	7	20	-13	10	24	20	10
<b>Humanities</b>	180		18	175	-3	18	173	-1	17	160	-8	18	176	10	17
Lower Division	118		20	111	-6	20	116	5	17	103	-11	19	125	21	16
Upper Division	57		17	57	0	17	51	-11	19	53	4	19	47	-11	19
Graduate Level	5		8	7	40	6	6	-14	4	4	-33	5	4	0	5
<b>Natural Sciences</b>	233		20	235	1	20	248	6	19	244	-2	19	261	7	19
Lower Division	152		22	143	-6	24	156	9	22	149	-4	23	156	5	22
Upper Division	77		15	88	14	14	86	-2	13	89	3	13	100	12	14
Graduate Level	4		10	4	0	8	6	50	9	6	0	11	5	-17	10
<b>Social Sciences</b>	164		25	176	7	24	179	2	24	189	6	24	196	4	23
Lower Division	64		30	66	3	29	63	-5	31	67	6	30	68	1	31
Upper Division	97		22	100	3	22	105	5	21	112	7	21	113	1	20
Graduate Level	3		11	10	233	10	11	10	9	10	-9	12	15	50	11
<b>General Education</b>							8		8	10	25	12	9	-10	13
Lower Division							8		8	10	25	12	9	-10	13
<b>Coll Of Business &amp; Economics</b>	44		27	48	9	26	51	6	23	47	-8	23	47	0	24
Lower Division	19		31	20	5	28	20	0	26	20	0	27	19	-5	29
Upper Division	25		24	28	12	24	31	11	20	27	-13	20	28	4	21
<b>College of Pharmacy</b>										7		76	18	157	66
Graduate Level										7		76	18	157	66
<b>General Education</b>	7		4	9	29	8									
Lower Division	7		4	9	29	8									
<b>Natl Student Exch &amp; Study Abroad</b>	7		4	6	-14	5									
Lower Division	7		4	6	-14	5									
<b>Keelikolani, Coll of Hawaiian Lang</b>	12		14	17	42	12	35	106	15	41	17	15	46	12	18
Lower Division	8		16	9	12	14	22	144	19	27	23	18	29	7	21
Upper Division	3		12	7	133	11	9	29	9	12	33	10	11	-8	18
Graduate Level	1		6	1	0	6	4	300	5	2	-50	6	6	200	5

1/ Excludes courses numbered -99 (individual instruction) and 700 (thesis research).

2/ Percent change between -.49 and 0 is noted as (<1). Percent change between -.9 and -.5 is rounded to -1.

3/ The College of Business and Economics was established effective January 2004. Formerly called School of Business and a functional division within the College Arts and Sciences.

4/ Prior to Spring 2007, Hawaiian Studies was misplaced under College of Arts and Sciences instead of Ka Haka `Ula O Ke`elikolani, College of Hawaiian Language. Aggregate data for Ka Haka `Ula O Ke`elikolani, College of Hawaiian Language should include Hawaiian Studies. Counts by colleges will differ from previously published reports.

- 5/ Prior to Spring 2007, General Education was incorrectly excluded from College of Arts and Sciences. Aggregate data for College of Arts and Sciences should include General Education. Counts for College of Arts and Sciences will differ from previously published reports.
- 6/ The creation of a College of Pharmacy at UH-Hilo, in concept, was approved by the Board of Regents in October 2004.

SERIES: Course Registration Report

SOURCE: Banner Operational Data Store (ODS), IRO\_SOCAD

University of Hawai'i, Institutional Research Office