

COURSE REGISTRATION REPORT
UNIVERSITY OF HAWAI'I, MANOA
FALL 2003

Institutional Research Office
University of Hawai'i
March 2004

File Reference: Management and Planning Support Folder, Courses

Reports available online at: <http://www.hawaii.edu/iro/maps.htm>

COURSE REGISTRATION SUMMARY
UNIVERSITY OF HAWAII, MANOA
FALL 2003

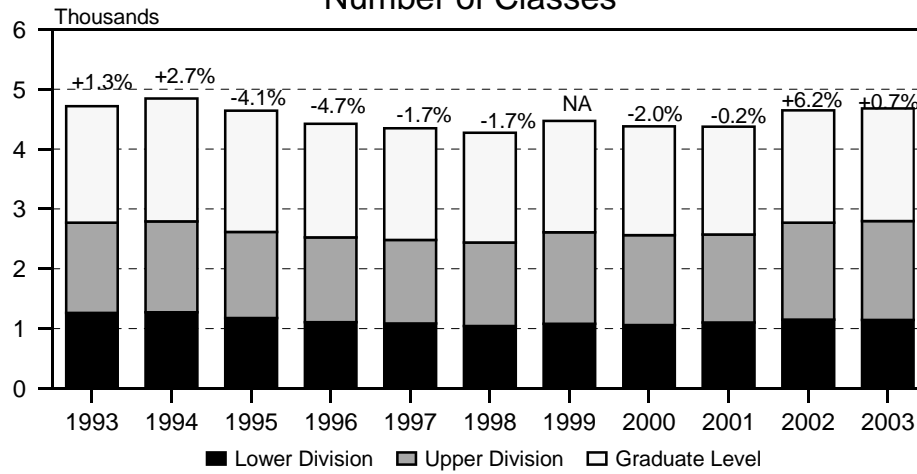
In Fall 2003, there were 2,371 courses taught at the University of Hawai'i at Mānoa (UHM), resulting in 79,131 registrations in 4,680 classes for a total of 226,357 student semester hours (SSH) and course FTE of 15,758 (Table 2).

Course registration measures for Fall 2003 were highest since Fall 1996 (Figures 1 thru Figures 4). Total SSH at the Mānoa campus increased by 6.0% from Fall 2002. School of Hawaiian, Asian and Pacific Studies had the highest percentage increase at 68.0%, followed by School of Architecture at 15.7%, and College of Tropical Agriculture and Human Resources at 11.8% (Table 3).

The average class size (ACS) at UHM, computed for all classes except individual instruction (-99), thesis research (700) and dissertation research (800) was 22 (Table 4). For the past five years, Business Administration and Natural Sciences had ACS of 29 and above. Colleges with smaller average class sizes were Medicine, Education, Engineering, Other Arts & Sciences, Nursing and Dental Hygiene and Military Studies (Table 4 and Figure 7).

University of Hawai'i at Manoa - Fall Semesters

Figure 1
Number of Classes



Includes classes numbered -99 (Individual Instr), 700 (Thesis Rsrch), and 800 (Dissertation Rsrch)

Figure 2
Student Registrations

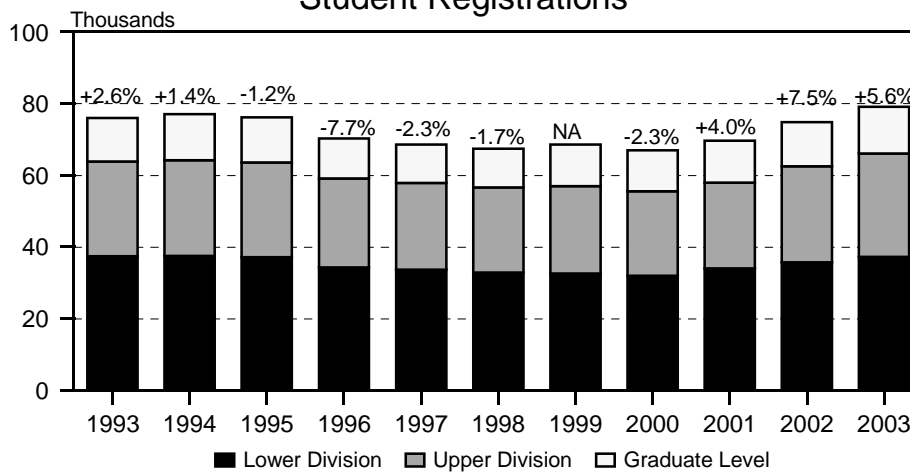
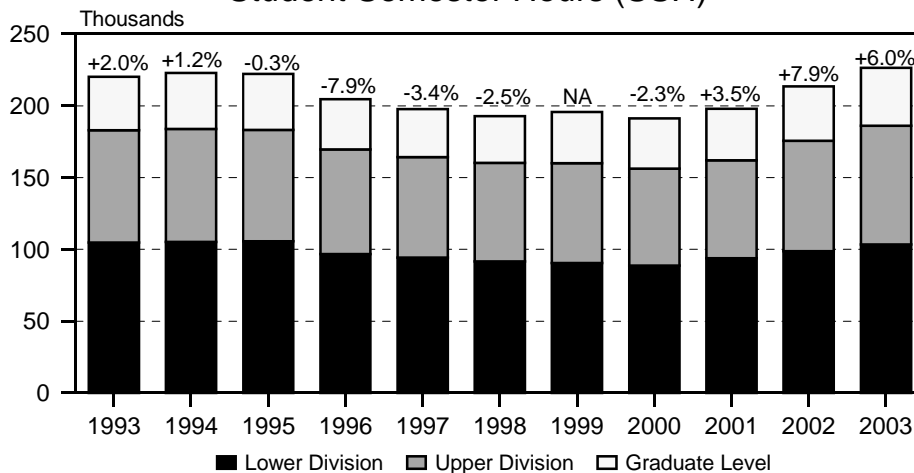


Figure 3
Student Semester Hours (SSH)



Note: Beginning Fall 1999, includes Outreach College fall term classes.

University of Hawai'i at Manoa - Fall Semesters

Figure 4
Course FTE

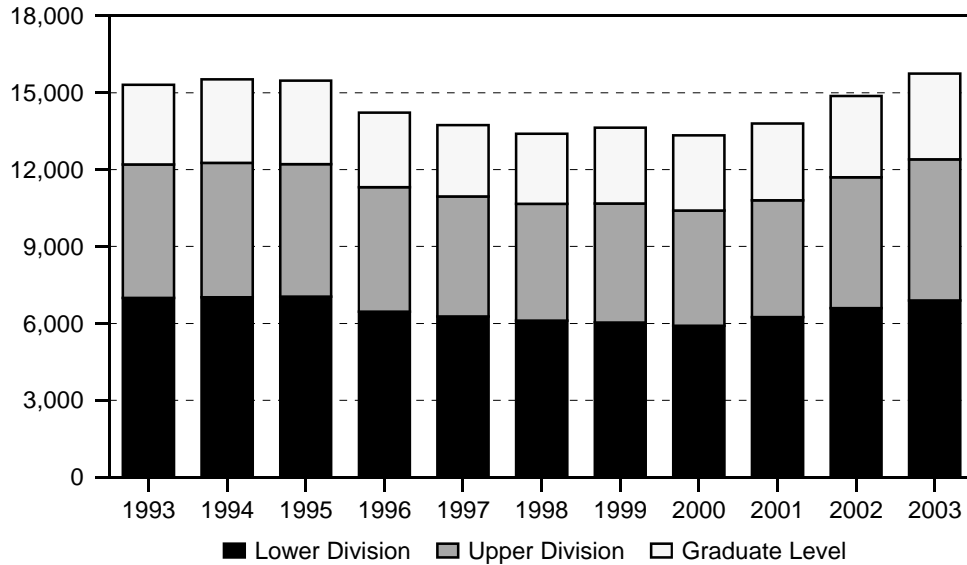
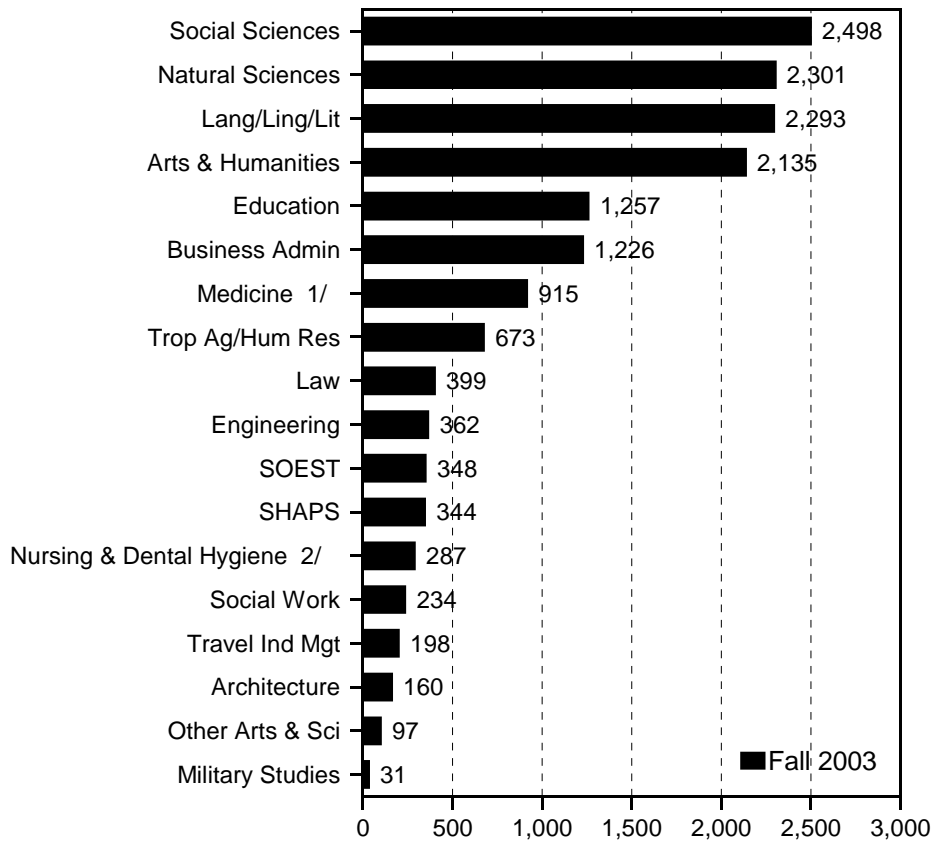


Figure 5
Course FTE, by College



Note: Beginning Fall 1999, includes Outreach College fall term classes.
 1/ School of Public Health was consolidated into School of Medicine effective Fall 2000.
 2/ Formerly called School of Nursing; name change effective July 2000.

University of Hawai'i at Manoa - Fall Semesters

Figure 6
Average Class Size

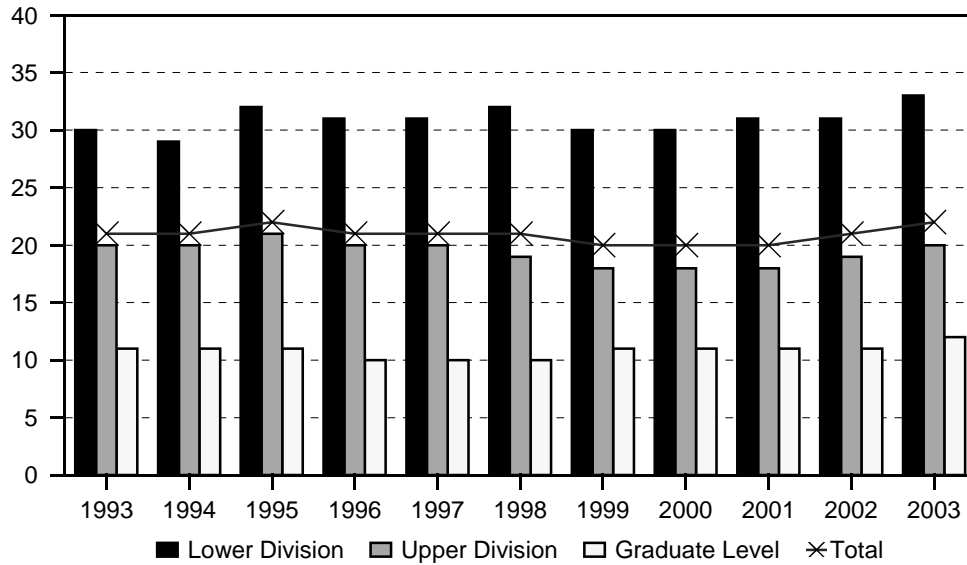
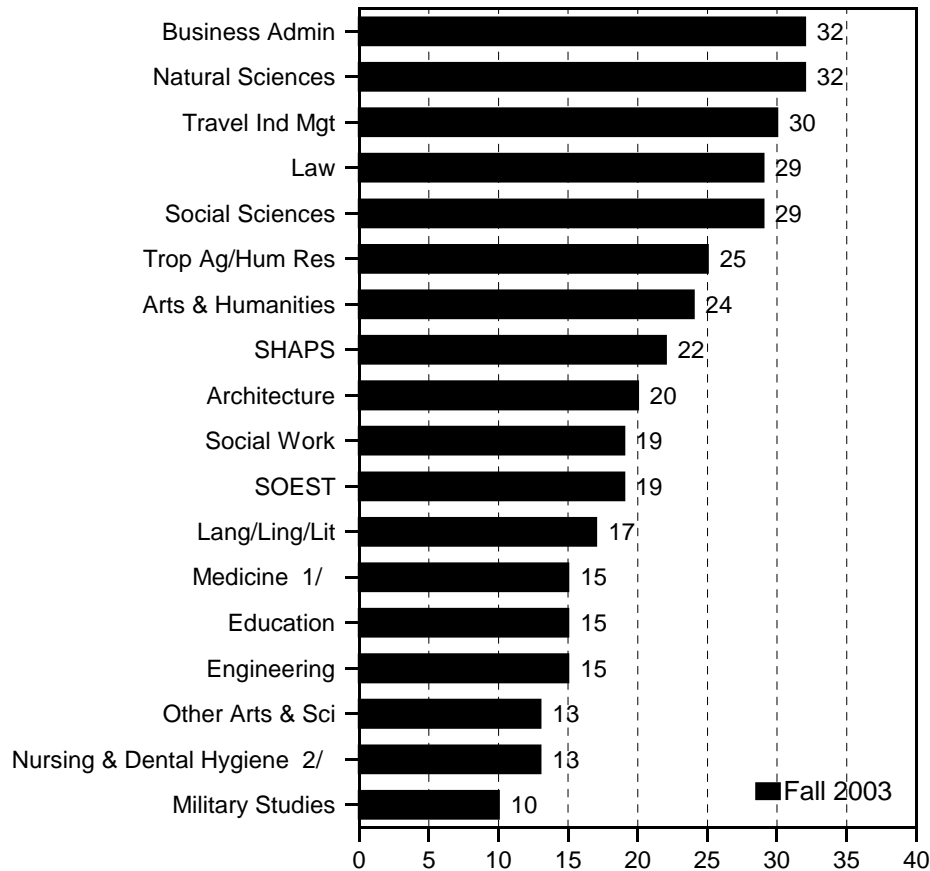


Figure 7
Average Class Size, by College



Note: Beginning Fall 1999, includes Outreach College fall term classes.
 1/ School of Public Health was consolidated into School of Medicine effective Fall 2000.
 2/ Formerly called School of Nursing; name change effective July 2000.

TABLE 1
 COURSE REGISTRATION SUMMARY, BY COURSE LEVEL
 UNIVERSITY OF HAWAII AT MANOA
 FALL 1999 TO FALL 2003

COURSE LEVEL	COURSES		CLASSES 1/		SEM HOURS		STUDENT REGIS		SSH	
	No.	%C	No.	%C	No.	%C	No.	%C	No.	%C
FALL 1999 TOTAL 2/	2,370	NA	4,474	NA	8,917	NA	68,624	NA	195,650	NA
0-99	6		16		48		242		726	
100-199	189		594		1,472		20,937		56,050	
200-299	218		472		1,304		11,467		33,655	
300-499	1,024		1,532		3,707		24,339		69,712	
500-599	120		172		341		2,578		10,078	
600-800	813		1,688		2,045		9,061		25,429	
FALL 2000 TOTAL	2,329	-1.7	4,383	-2.0	8,818	-1.1	67,045	-2.3	191,238	-2.3
0-99	6	0.0	17	6.3	51	6.3	286	18.2	858	18.2
100-199	189	0.0	580	-2.4	1,427	-3.1	20,773	-0.8	55,535	-0.9
200-299	217	-0.5	463	-1.9	1,256	-3.7	10,990	-4.2	32,242	-4.2
300-499	1,009	-1.5	1,502	-2.0	3,654	-1.4	23,549	-3.2	67,516	-3.2
500-599	129	7.5	179	4.1	414	21.4	2,673	3.7	10,233	1.5
600-800	779	-4.2	1,642	-2.7	2,016	-1.4	8,774	-3.2	24,854	-2.3
FALL 2001 TOTAL	2,315	-0.6	4,376	-0.2	8,703	-1.3	69,705	4.0	197,971	3.5
0-99	6	0.0	25	47.1	75	47.1	386	35.0	1,158	35.0
100-199	196	3.7	605	4.3	1,469	2.9	22,205	6.9	59,060	6.3
200-299	223	2.8	474	2.4	1,266	0.8	11,518	4.8	33,544	4.0
300-499	993	-1.6	1,469	-2.2	3,483	-4.7	23,926	1.6	68,368	1.3
500-599	130	0.8	185	3.4	467	12.8	2,693	0.7	10,429	1.9
600-800	767	-1.5	1,618	-1.5	1,943	-3.6	8,977	2.3	25,412	2.2
FALL 2002 TOTAL	2,371	2.4	4,648	6.2	9,270	6.5	74,906	7.5	213,592	7.9
0-99	9	50.0	30	20.0	81	8.0	395	2.3	1,255	8.4
100-199	209	6.6	627	3.6	1,523	3.7	23,554	6.1	63,298	7.2
200-299	219	-1.8	496	4.6	1,323	4.5	11,795	2.4	34,281	2.2
300-499	1,031	3.8	1,619	10.2	3,848	10.5	26,805	12.0	76,721	12.2
500-599	135	3.8	199	7.6	509	9.0	2,942	9.2	11,143	6.8
600-800	768	0.1	1,677	3.6	1,986	2.2	9,415	4.9	26,894	5.8
FALL 2003 TOTAL	2,371	0.0	4,680	0.7	9,164	-1.1	79,131	5.6	226,357	6.0
0-99	9	0.0	30	0.0	81	0.0	420	6.3	1,472	17.3
100-199	202	-3.3	646	3.0	1,539	1.1	24,667	4.7	66,416	4.9
200-299	219	0.0	468	-5.6	1,231	-7.0	12,224	3.6	35,436	3.4
300-499	1,032	0.1	1,658	2.4	3,934	2.2	28,762	7.3	82,847	8.0
500-599	119	-11.9	181	-9.0	382	-25.0	3,088	5.0	11,833	6.2
600-800	790	2.9	1,697	1.2	1,997	0.6	9,970	5.9	28,353	5.4

1/ Includes classes numbered -99 (Individual Instruction), 700 (Thesis Research), and 800 (Dissertation Research).

2/ Beginning Fall 1999, includes Outreach College fall term classes as of census date. Percentage change for Fall 1999 is therefore not comparable with prior year.

SOURCE: Computer Report 3011: "Course Registration Summary Report."

TABLE 2
 COURSE REGISTRATION SUMMARY
 UNIVERSITY OF HAWAII AT MANOA
 FALL 2003

COURSE OFFERING	COURSES	CLASSES 1/		SEM HOURS	STUD REGIS	STUDENT SEM HRS	COURSE FTE
		No.	Avg Size				
TOTAL.....	2,371	3,502	22	9,164	79,131	226,357	15,758
Lower Division.....	430	1,138	33	2,851	37,311	103,324	6,887
Upper Division.....	1,032	1,417	20	3,934	28,762	82,847	5,514
Graduate Level.....	909	947	12	2,379	13,058	40,186	3,357
COLLEGE OF ARTS & SCIENCES.....	1,332	1,970	24	5,187	48,345	137,028	9,324
Lower Division.....	317	898	32	2,336	28,843	82,127	5,474
Upper Division.....	606	707	21	1,916	15,320	43,364	2,886
Graduate Level.....	409	365	9	935	4,182	11,537	964
Arts and Humanities.....	372	470	24	1,078	11,597	31,566	2,135
Lower Division.....	96	189	35	447	6,526	18,566	1,239
Upper Division.....	181	202	21	468	4,392	11,220	747
Graduate Level.....	95	79	6	163	679	1,780	149
American Studies.....	22	24	20	71	523	1,524	107
Lower Division.....	3	10	27	30	271	813	54
Upper Division.....	6	5	27	15	139	417	28
Graduate Level.....	13	9	9	26	113	294	25
Art.....	89	107	20	268	2,236	6,612	444
Lower Division.....	28	48	27	140	1,302	3,840	256
Upper Division.....	42	42	20	119	885	2,580	172
Graduate Level.....	19	17	2	9	49	192	16
Dance.....	28	29	15	65	437	1,127	76
Lower Division.....	7	9	22	25	198	548	37
Upper Division.....	15	16	14	31	216	517	34
Graduate Level.....	6	4	5	9	23	62	5
History.....	53	57	43	172	2,514	7,427	502
Lower Division.....	9	16	97	48	1,554	4,662	311
Upper Division.....	29	30	26	90	789	2,367	158
Graduate Level.....	15	11	9	34	171	398	33
Music.....	78	120	16	142	1,947	3,231	219
Lower Division.....	24	53	14	55	728	1,346	90
Upper Division.....	42	58	20	65	1,140	1,698	113
Graduate Level.....	12	9	6	22	79	187	16
Philosophy.....	20	25	26	75	675	1,985	136
Lower Division.....	4	9	43	27	390	1,170	78
Upper Division.....	9	10	19	30	190	570	38
Graduate Level.....	7	6	11	18	95	245	20
Religion.....	19	20	63	63	1,267	3,795	254
Lower Division.....	6	9	118	27	1,063	3,189	213
Upper Division.....	8	8	23	27	181	543	36
Graduate Level.....	5	3	6	9	23	63	5
Speech.....	25	38	32	114	1,238	3,715	249
Lower Division.....	5	16	38	48	601	1,803	120
Upper Division.....	14	17	34	54	598	1,807	120
Graduate Level.....	6	5	7	12	39	105	9

TABLE 2 (cont.)

COURSE OFFERING	COURSES	CLASSES 1/ No. Avg Size	SEM HOURS	STUD REGIS	STUDENT SEM HRS	COURSE FTE
Theatre.....	38	50 15	108	760	2,150	148
Lower Division.....	10	19 22	47	419	1,195	80
Upper Division.....	16	16 15	37	254	721	48
Graduate Level.....	12	15 5	24	87	234	20
Languages, Ling and Lit.....	375	632 17	2,019	10,802	33,881	2,293
Lower Division.....	107	346 19	1,144	6,542	21,189	1,411
Upper Division.....	175	212 16	650	3,465	10,503	698
Graduate Level.....	93	74 8	225	795	2,189	184
East Asian Lang & Lit.....	91	149 13	517	2,039	6,899	467
Lower Division.....	22	74 15	269	1,097	3,977	264
Upper Division.....	40	49 15	161	776	2,472	165
Graduate Level.....	29	26 5	87	166	450	38
Chinese Lang & Lit.....	21	28 12	96	343	1,187	80
Lower Division.....	5	12 13	45	159	605	40
Upper Division.....	10	11 14	36	158	505	34
Graduate Level.....	6	5 5	15	26	77	6
East Asian Lang & Lit.....	14	15 14	54	231	663	46
Lower Division.....	3	6 20	18	121	363	24
Upper Division.....	3	4 17	12	69	207	14
Graduate Level.....	8	5 4	24	41	93	8
Japanese Lang & Lit.....	42	90 14	315	1,263	4,399	297
Lower Division.....	11	51 15	187	740	2,718	181
Upper Division.....	19	27 16	92	447	1,470	98
Graduate Level.....	12	12 6	36	76	211	18
Korean Lang & Lit.....	14	16 11	52	202	650	44
Lower Division.....	3	5 15	19	77	291	19
Upper Division.....	8	7 11	21	102	290	19
Graduate Level.....	3	4 6	12	23	69	6
English.....	82	145 20	429	2,899	8,527	578
Lower Division.....	17	71 21	211	1,465	4,265	284
Upper Division.....	49	61 20	183	1,242	3,700	247
Graduate Level.....	16	13 12	35	192	562	47
Lang & Lit of Europe & Amer 2/.....	64	132 18	396	2,470	7,397	496
Lower Division.....	23	86 20	258	1,732	5,194	345
Upper Division.....	30	40 16	120	668	1,998	133
Graduate Level.....	11	6 9	18	70	205	18
French.....	16	28 16	84	438	1,314	89
Lower Division.....	4	16 17	48	272	816	54
Upper Division.....	8	9 16	27	144	432	29
Graduate Level.....	4	3 7	9	22	66	6
German.....	7	11 16	33	175	525	35
Lower Division.....	4	9 16	27	147	441	29
Upper Division.....	2	2 13	6	26	78	5
Graduate Level.....	1	0 0	0	2	6	1
Greek.....	3	3 10	9	29	87	5
Lower Division.....	2	2 14	6	27	81	5
Upper Division.....	1	1 2	3	2	6	0

TABLE 2 (cont.)

COURSE OFFERING	COURSES	CLASSES 1/		SEM HOURS	STUD REGIS	STUDENT SEM HRS	COURSE FTE
		No.	Avg Size				
Italian.....	2	3	21	9	62	186	12
Lower Division.....	2	3	21	9	62	186	12
Lang & Lit of Europe & Amer 2/.....	14	12	29	36	399	1,184	80
Lower Division.....	3	2	89	6	187	559	37
Upper Division.....	8	9	18	27	191	567	38
Graduate Level.....	3	1	11	3	21	58	5
Latin.....	3	8	21	24	167	501	33
Lower Division.....	2	7	23	21	160	480	32
Upper Division.....	1	1	7	3	7	21	1
Russian.....	2	2	10	6	19	57	4
Lower Division.....	2	2	10	6	19	57	4
Spanish.....	17	65	18	195	1,181	3,543	238
Lower Division.....	4	45	19	135	858	2,574	172
Upper Division.....	10	18	17	54	298	894	60
Graduate Level.....	3	2	12	6	25	75	6
Hawn & Indo-Pacific Lang & Lit	75	108	14	385	1,519	5,560	370
Lower Division.....	36	69	16	268	1,106	4,327	289
Upper Division.....	38	39	10	117	410	1,225	80
Graduate Level.....	1	0	0	0	3	8	1
Arabic 3/.....	3	3	13	12	40	160	11
Lower Division.....	3	3	13	12	40	160	11
Cambodian.....	2	2	9	8	17	68	5
Lower Division.....	2	2	9	8	17	68	5
Chamorro	1	1	10	4	10	40	3
Lower Division.....	1	1	10	4	10	40	3
Filipino.....	9	12	14	43	162	601	40
Lower Division.....	4	7	16	28	115	460	31
Upper Division.....	5	5	9	15	47	141	9
Hawaiian.....	16	43	16	157	692	2,578	171
Lower Division.....	4	28	18	112	508	2,032	135
Upper Division.....	12	15	12	45	184	546	36
Hindi.....	2	2	7	8	14	56	4
Lower Division.....	2	2	7	8	14	56	4
Ilokano.....	5	6	15	22	90	338	22
Lower Division.....	3	4	17	16	68	272	18
Upper Division.....	2	2	11	6	22	66	4
Indo-Pacific Lang.....	9	6	13	18	97	285	19
Lower Division.....	2	2	15	6	34	96	6
Upper Division.....	6	4	13	12	60	181	12
Graduate Level.....	1	0	0	0	3	8	1
Indonesian.....	5	5	7	16	35	113	7
Lower Division.....	2	2	12	7	23	77	5
Upper Division.....	3	3	4	9	12	36	2

TABLE 2 (cont.)

COURSE OFFERING	COURSES	CLASSES 1/ No. Avg Size	SEM HOURS	STUD REGIS	STUDENT SEM HRS	COURSE FTE
Maori 4/.....	2	2 8	8	15	60	4
Lower Division.....	2	2 8	8	15	60	4
Samoan.....	8	13 18	46	238	875	58
Lower Division.....	3	8 22	31	172	677	45
Upper Division.....	5	5 13	15	66	198	13
Sanskrit.....	2	2 9	6	18	54	4
Lower Division.....	2	2 9	6	18	54	4
Tahitian.....	3	3 5	9	14	42	3
Lower Division.....	2	2 7	6	13	39	3
Upper Division.....	1	1 1	3	1	3	0
Thai.....	4	4 6	14	25	95	6
Lower Division.....	2	2 10	8	20	80	5
Upper Division.....	2	2 3	6	5	15	1
Vietnamese.....	4	4 13	14	52	195	13
Lower Division.....	2	2 20	8	39	156	10
Upper Division.....	2	2 7	6	13	39	3
Interpretation & Translation.....	3	2 18	6	37	112	7
Upper Division.....	3	2 18	6	37	112	7
Linguistics.....	26	37 27	111	1,028	3,017	207
Lower Division.....	2	15 47	45	709	2,127	142
Upper Division.....	9	11 16	33	176	528	35
Graduate Level.....	15	11 9	33	143	362	30
Second Language Studies 5/.....	34	59 13	175	810	2,369	168
Lower Division.....	7	31 14	93	433	1,299	87
Upper Division.....	6	10 16	30	156	468	31
Graduate Level.....	21	18 11	52	221	602	50
Eng Lang Institute.....	7	31 14	93	433	1,299	87
Lower Division.....	7	31 14	93	433	1,299	87
Second Lang Acquisition	2	0 0	0	12	27	2
Graduate Level	2	0 0	0	12	27	2
Second Language Studies 5/.....	25	28 12	82	365	1,043	79
Upper Division.....	6	10 16	30	156	468	31
Graduate Level.....	19	18 11	52	209	575	48
Natural Sciences.....	232	398 32	839	12,932	33,759	2,301
Lower Division.....	65	223 44	419	9,777	25,245	1,683
Upper Division.....	81	95 21	247	2,082	5,528	369
Graduate Level.....	86	80 10	173	1,073	2,986	249
Biology Program.....	13	58 40	74	2,326	4,948	330
Lower Division.....	7	49 40	57	1,958	4,154	277
Upper Division.....	6	9 40	17	368	794	53
Botany/Botanical Sci.....	20	22 24	42	587	1,527	107
Lower Division.....	3	8 32	12	255	635	42
Upper Division.....	10	9 23	24	217	595	40
Graduate Level.....	7	5 12	6	115	297	25

TABLE 2 (cont.)

COURSE OFFERING	COURSES	CLASSES 1/		SEM HOURS	STUD REGIS	STUDENT SEM HRS	COURSE FTE
		No.	Avg Size				
Botany.....	18	22	24	42	573	1,513	106
Lower Division.....	3	8	32	12	255	635	42
Upper Division.....	10	9	23	24	217	595	40
Graduate Level.....	5	5	12	6	101	283	24
Botanical Science.....	2	0	0	0	14	14	1
Graduate Level.....	2	0	0	0	14	14	1
Chemistry.....	27	65	39	109	2,553	5,946	400
Lower Division.....	13	53	45	80	2,384	5,501	367
Upper Division.....	5	5	18	12	96	243	16
Graduate Level.....	9	7	8	17	73	202	17
Information & Comp Sci.....	49	75	26	218	2,019	6,612	465
Lower Division.....	6	15	63	50	940	3,507	234
Upper Division.....	17	27	20	77	582	1,674	112
Graduate Level.....	26	33	14	91	497	1,431	119
Information & Comp Sci.....	33	52	31	155	1,694	5,639	384
Lower Division.....	6	15	63	50	940	3,507	234
Upper Division.....	17	27	20	77	582	1,674	112
Graduate Level.....	10	10	14	28	172	458	38
Library & Information Sci.....	16	23	14	63	325	973	81
Graduate Level.....	16	23	14	63	325	973	81
Mathematics.....	35	60	36	177	2,198	6,644	444
Lower Division.....	15	40	49	117	1,942	5,883	392
Upper Division.....	14	16	14	48	225	673	45
Graduate Level.....	6	4	6	12	31	88	7
Microbiology.....	16	20	31	42	645	1,697	115
Lower Division.....	2	6	46	13	276	711	47
Upper Division.....	9	10	32	25	319	860	57
Graduate Level.....	5	4	7	4	50	126	11
Physics & Astronomy.....	41	66	29	129	1,933	4,713	319
Lower Division.....	17	47	38	83	1,775	4,261	284
Upper Division.....	8	7	7	20	49	141	9
Graduate Level.....	16	12	5	26	109	311	26
Astronomy.....	10	14	38	32	563	1,556	106
Lower Division.....	3	9	56	23	501	1,397	93
Graduate Level.....	7	5	6	9	62	159	13
Physics.....	31	52	26	97	1,370	3,157	213
Lower Division.....	14	38	34	60	1,274	2,864	191
Upper Division.....	8	7	7	20	49	141	9
Graduate Level.....	9	7	5	17	47	152	13
Zoology.....	31	32	18	48	671	1,672	121
Lower Division.....	2	5	49	7	247	593	40
Upper Division.....	12	12	17	24	226	548	37
Graduate Level.....	17	15	9	17	198	531	44

TABLE 2 (cont.)

COURSE OFFERING	COURSES	CLASSES 1/		SEM HOURS	STUD REGIS	STUDENT SEM HRS	COURSE FTE
		No.	Avg Size				
Social Sciences.....	332	414	29	1,172	12,297	36,407	2,498
Lower Division.....	42	101	54	284	5,485	16,243	1,082
Upper Division.....	161	185	28	521	5,266	15,753	1,048
Graduate Level.....	129	128	9	367	1,546	4,411	368
Anthropology.....	34	39	31	109	1,271	3,710	253
Lower Division.....	7	15	49	38	736	2,164	144
Upper Division.....	18	19	20	57	393	1,176	78
Graduate Level.....	9	5	17	14	142	370	31
School of Communication 6/.....	41	43	22	122	998	2,955	201
Lower Division.....	3	7	45	21	318	954	63
Upper Division.....	25	25	22	70	559	1,661	110
Graduate Level.....	13	11	8	31	121	340	28
Communication.....	29	28	21	79	624	1,837	127
Lower Division.....	1	1	107	3	107	321	21
Upper Division.....	15	16	24	45	396	1,176	78
Graduate Level.....	13	11	8	31	121	340	28
Journalism.....	12	15	25	43	374	1,118	74
Lower Division.....	2	6	35	18	211	633	42
Upper Division.....	10	9	18	25	163	485	32
Economics.....	30	41	43	118	1,812	5,448	371
Lower Division.....	3	14	81	42	1,137	3,411	227
Upper Division.....	14	16	32	45	521	1,563	104
Graduate Level.....	13	11	12	31	154	474	40
Ethnic Studies.....	14	22	29	51	640	1,918	128
Lower Division.....	2	7	44	21	311	933	62
Upper Division.....	12	15	21	30	329	985	66
Geography.....	26	29	31	74	968	2,655	181
Lower Division.....	4	12	43	24	516	1,380	92
Upper Division.....	13	12	29	36	358	1,074	72
Graduate Level.....	9	5	9	14	94	201	17
Intl Cultural Studies 7/.....	3	3	10	7	29	69	6
Graduate Level.....	3	3	10	7	29	69	6
Peace & Conflict Educ.....	6	8	17	24	137	411	28
Lower Division.....	1	2	22	6	43	129	9
Upper Division.....	4	5	16	15	82	246	16
Graduate Level.....	1	1	12	3	12	36	3
Political Science.....	45	62	19	180	1,261	3,732	263
Lower Division.....	6	15	15	45	223	669	45
Upper Division.....	20	31	23	89	728	2,207	147
Graduate Level.....	19	16	15	46	310	856	71
Population Studies.....	2	1	14	3	16	46	3
Upper Division.....	1	1	14	3	14	42	3
Graduate Level.....	1	0	0	0	2	4	0
Psychology.....	46	70	31	202	2,279	6,789	465
Lower Division.....	6	8	149	24	1,188	3,564	238
Upper Division.....	16	22	34	60	822	2,465	164
Graduate Level.....	24	40	5	118	269	760	63

TABLE 2 (cont.)

COURSE OFFERING	COURSES	CLASSES 1/ No. Avg Size		SEM HOURS	STUD REGIS	STUDENT SEM HRS	COURSE FTE
Public Administration.....	7	10	9	26	97	346	29
Graduate Level.....	7	10	9	26	97	346	29
Social Science.....	3	3	32	7	97	265	17
Lower Division.....	1	1	62	3	62	186	12
Upper Division.....	2	2	18	4	35	79	5
Sociology.....	43	50	38	151	1,940	5,788	393
Lower Division.....	5	14	50	42	699	2,097	140
Upper Division.....	25	26	42	79	1,102	3,288	219
Graduate Level.....	13	10	10	30	139	403	34
Urban & Regional Plan.....	15	15	12	46	188	588	48
Upper Division.....	1	1	17	3	17	51	3
Graduate Level.....	14	14	12	43	171	537	45
Women's Studies.....	17	18	31	52	564	1,687	112
Lower Division.....	4	6	42	18	252	756	50
Upper Division.....	10	10	30	30	306	916	61
Graduate Level.....	3	2	3	4	6	15	1
Other Arts & Sciences.....	21	56	13	79	717	1,415	97
Lower Division.....	7	39	13	42	513	884	59
Upper Division.....	8	13	9	30	115	360	24
Graduate Level.....	6	4	20	7	89	171	14
College of Arts & Sciences (CAS).....	3	30	12	38	364	566	38
Lower Division.....	3	30	12	38	364	566	38
Communication & Info Sci.....	5	3	23	7	79	149	12
Graduate Level.....	5	3	23	7	79	149	12
Honors & Sel Studies.....	4	12	11	21	127	361	24
Lower Division.....	1	5	10	0	48	124	8
Upper Division.....	3	7	11	21	79	237	16
Interdisc Studies.....	9	11	13	13	147	339	23
Lower Division.....	3	4	25	4	101	194	13
Upper Division.....	5	6	6	9	36	123	8
Graduate Level.....	1	1	10	0	10	22	2
SCH HAWN, ASIAN & PAC STUDIES.....	52	72	22	208	1,660	5,091	344
Lower Division.....	7	31	34	88	1,076	3,356	223
Upper Division.....	26	27	16	80	455	1,362	90
Graduate Level.....	19	14	7	40	129	373	31
Asian Studies.....	26	24	13	69	343	985	69
Lower Division.....	1	1	52	3	52	156	10
Upper Division.....	12	13	16	37	213	617	41
Graduate Level.....	13	10	6	29	78	212	18
Hawn, Asian & Pacific Studies.....	1	0	0	0	18	200	13
Lower Division.....	1	0	0	0	18	200	13
Hawaiian Studies.....	16	41	29	119	1,200	3,603	240
Lower Division.....	5	30	34	85	1,006	3,000	200
Upper Division.....	11	11	17	34	194	603	40

TABLE 2 (cont.)

COURSE OFFERING	COURSES	CLASSES 1/ No. Avg Size	SEM HOURS	STUD REGIS	STUDENT SEM HRS	COURSE FTE
Pacific Island Studies.....	9	7 11	20	99	303	22
Upper Division.....	3	3 15	9	48	142	9
Graduate Level.....	6	4 8	11	51	161	13
SCH OF OCEAN & EARTH SCI TECH.....	81	88 19	239	1,794	4,901	348
Lower Division.....	11	30 36	54	1,081	2,645	177
Upper Division.....	25	23 14	91	341	955	63
Graduate Level.....	45	35 6	94	372	1,301	108
Geology-Geophysics.....	32	38 16	105	656	1,807	127
Lower Division.....	4	13 28	25	370	914	61
Upper Division.....	14	12 13	45	173	469	31
Graduate Level.....	14	13 5	35	113	424	35
Meteorology.....	13	13 18	31	275	757	55
Lower Division.....	3	6 30	12	177	435	29
Upper Division.....	3	3 8	9	24	72	5
Graduate Level.....	7	4 8	10	74	250	21
Ocean and Res Engineering 8/.....	13	10 7	28	88	275	21
Lower Division.....	1	1 13	3	13	39	3
Upper Division.....	1	1 17	3	17	51	3
Graduate Level.....	11	8 5	22	58	185	15
Oceanography.....	23	27 27	75	775	2,062	145
Lower Division.....	3	10 52	14	521	1,257	84
Upper Division.....	7	7 17	34	127	363	24
Graduate Level.....	13	10 8	27	127	442	37
SCHOOL OF ARCHITECTURE.....	25	35 20	120	707	2,318	160
Lower Division.....	5	10 28	36	276	910	61
Upper Division.....	12	18 19	37	352	1,080	72
Graduate Level.....	8	7 9	47	79	328	27
COLLEGE OF BUSINESS ADMIN.....	93	184 32	527	5,854	17,402	1,226
Lower Division.....	6	22 47	66	1,042	3,144	210
Upper Division.....	55	115 30	330	3,435	10,425	695
Graduate Level.....	32	47 29	131	1,377	3,833	321
Accounting.....	22	41 32	132	1,328	4,166	284
Lower Division.....	2	10 58	30	584	1,752	117
Upper Division.....	14	24 26	81	629	2,069	138
Graduate Level.....	6	7 16	21	115	345	29
Business (General).....	25	84 33	218	2,815	8,105	582
Lower Division.....	3	7 31	21	219	675	45
Upper Division.....	8	51 32	129	1,656	4,908	327
Graduate Level.....	14	26 35	68	940	2,522	210
Financial Econ & Institution.....	14	22 34	66	740	2,220	155
Lower Division.....	1	5 48	15	239	717	48
Upper Division.....	9	12 31	36	372	1,116	74
Graduate Level.....	4	5 26	15	129	387	33
Business Law.....	1	5 48	15	239	717	48
Lower Division.....	1	5 48	15	239	717	48

TABLE 2 (cont.)

COURSE OFFERING	COURSES	CLASSES 1/ No. Avg Size	SEM HOURS	STUD REGIS	STUDENT SEM HRS	COURSE FTE
Finance.....	10	14 29	42	404	1,212	86
Upper Division.....	7	10 31	30	305	915	61
Graduate Level.....	3	4 25	12	99	297	25
Insurance.....	1	1 40	3	40	120	8
Upper Division.....	1	1 40	3	40	120	8
Real Estate.....	2	2 29	6	57	171	13
Upper Division.....	1	1 27	3	27	81	5
Graduate Level.....	1	1 30	3	30	90	8
Information Technology Mgmt 9/.....	7	9 19	27	176	526	35
Upper Division.....	7	9 19	27	176	526	35
Management & Industrial Rel.....	16	16 26	48	415	1,245	92
Upper Division.....	9	8 30	24	244	732	49
Graduate Level.....	7	8 21	24	171	513	43
Human Resources Mgmt.....	4	4 34	12	134	402	28
Upper Division.....	3	3 35	9	105	315	21
Graduate Level.....	1	1 29	3	29	87	7
Industrial Relations.....	2	2 15	6	30	90	7
Upper Division.....	1	1 23	3	23	69	5
Graduate Level.....	1	1 7	3	7	21	2
Management.....	10	10 25	30	251	753	57
Upper Division.....	5	4 29	12	116	348	23
Graduate Level.....	5	6 23	18	135	405	34
Marketing.....	9	12 32	36	380	1,140	78
Upper Division.....	8	11 32	33	358	1,074	72
Graduate Level.....	1	1 22	3	22	66	6
SCH OF TRAVEL INDUSTRY MGT.....	34	35 30	88	1,060	2,918	198
Lower Division.....	7	7 50	19	350	911	61
Upper Division.....	21	24 27	57	655	1,844	123
Graduate Level.....	6	4 13	12	55	163	14
Travel Industry Management.....	34	35 30	88	1,060	2,918	198
Lower Division.....	7	7 50	19	350	911	61
Upper Division.....	21	24 27	57	655	1,844	123
Graduate Level.....	6	4 13	12	55	163	14
COLLEGE OF EDUCATION.....	231	421 15	1,243	6,668	17,599	1,257
Lower Division.....	27	55 31	71	1,720	2,346	156
Upper Division.....	82	219 15	762	3,232	10,228	682
Graduate Level.....	122	147 10	410	1,716	5,025	419
Counseling & Guidance.....	20	22 7	80	168	572	48
Graduate Level.....	20	22 7	80	168	572	48
Curriculum Studies 10/.....	19	23 14	58	387	1,005	83
Upper Division.....	1	1 15	3	15	45	3
Graduate Level.....	18	22 14	55	372	960	80
Education, Interdisciplinary.....	3	7 1	0	32	63	5
Graduate Level.....	3	7 1	0	32	63	5

TABLE 2 (cont.)

COURSE OFFERING	COURSES	CLASSES 1/ No. Avg Size		SEM HOURS	STUD REGIS	STUDENT SEM HRS	COURSE FTE
Educational Administration.....	18	24	13	57	350	1,006	80
Upper Division.....	2	4	18	12	70	210	14
Graduate Level.....	16	20	12	45	280	796	66
Educational Technology.....	11	17	14	51	257	764	55
Upper Division.....	4	11	16	33	175	525	35
Graduate Level.....	7	6	12	18	82	239	20
Educ Foundations.....	13	17	17	42	305	861	63
Upper Division.....	3	8	22	18	174	520	35
Graduate Level.....	10	9	13	24	131	341	28
Educ Psychology.....	19	26	17	70	462	1,349	100
Upper Division.....	5	12	21	36	259	777	52
Graduate Level.....	14	14	13	34	203	572	48
Institute for Teacher Education 10/.....	44	138	13	538	1,819	6,260	427
Upper Division.....	34	126	13	492	1,687	5,684	379
Graduate Level.....	10	12	11	46	132	576	48
Kinesiology & Leisure Science.....	56	85	26	155	2,234	3,765	255
Lower Division.....	27	55	31	71	1,720	2,346	156
Upper Division.....	21	24	17	67	412	1,147	76
Graduate Level.....	8	6	15	17	102	272	23
Special Education.....	28	62	10	192	654	1,954	141
Upper Division.....	12	33	13	101	440	1,320	88
Graduate Level.....	16	29	7	91	214	634	53
COLLEGE OF ENGINEERING.....	100	119	15	253	1,892	5,245	362
Lower Division.....	13	20	22	36	430	1,235	82
Upper Division.....	54	74	16	146	1,177	3,211	213
Graduate Level.....	33	25	8	71	285	799	67
Civil & Environmental Engineering 11/.....	36	37	15	101	604	1,669	117
Lower Division.....	5	6	25	13	148	355	24
Upper Division.....	17	18	18	52	327	966	64
Graduate Level.....	14	13	7	36	129	348	29
Electrical Engineering.....	35	56	15	87	872	2,511	173
Lower Division.....	5	10	20	16	199	736	49
Upper Division.....	18	38	15	46	555	1,431	95
Graduate Level.....	12	8	9	25	118	344	29
Interdisciplinary Engineering.....	3	4	16	6	62	84	5
Lower Division.....	2	3	15	5	44	66	4
Upper Division.....	1	1	18	1	18	18	1
Mechanical Engineering.....	26	22	16	59	354	981	67
Lower Division.....	1	1	39	2	39	78	5
Upper Division.....	18	17	16	47	277	796	53
Graduate Level.....	7	4	8	10	38	107	9
COLLEGE OF TROP AG & HUM RES 12/.....	131	127	25	346	3,383	9,823	673
Lower Division.....	17	28	52	82	1,458	4,342	290
Upper Division.....	72	77	20	209	1,556	4,556	304
Graduate Level.....	42	22	11	55	369	925	79

TABLE 2 (cont.)

COURSE OFFERING	COURSES	CLASSES 1/		SEM HOURS	STUD REGIS	STUDENT SEM HRS	COURSE FTE
		No.	Avg Size				
Family & Consumer Sciences.....	40	50	32	140	1,617	4,757	317
Lower Division.....	7	11	54	33	595	1,773	118
Upper Division.....	32	39	26	107	1,018	2,978	198
Graduate Level.....	1	0	0	0	4	6	1
Apparel, Prod, Design & Mdsing 13/.....	19	20	19	55	394	1,158	77
Lower Division.....	6	8	23	24	184	540	36
Upper Division.....	13	12	17	31	210	618	41
Family Resources.....	21	30	40	85	1,223	3,599	240
Lower Division.....	1	3	137	9	411	1,233	82
Upper Division.....	19	27	29	76	808	2,360	157
Graduate Level.....	1	0	0	0	4	6	1
Human Nutr/Food/Animal Sciences.....	26	29	29	79	905	2,622	178
Lower Division.....	4	10	58	30	575	1,725	115
Upper Division.....	13	15	15	39	243	707	47
Graduate Level.....	9	4	14	10	87	190	16
Animal Science.....	12	9	16	27	164	509	36
Lower Division.....	2	3	24	9	73	219	15
Upper Division.....	6	5	10	13	59	196	13
Graduate Level.....	4	1	19	5	32	94	8
Food Sci & Human Nutrition.....	14	20	36	52	741	2,113	142
Lower Division.....	2	7	72	21	502	1,506	100
Upper Division.....	7	10	17	26	184	511	34
Graduate Level.....	5	3	12	5	55	96	8
Molec Biosci & Biosys Engin.....	17	12	14	32	213	638	48
Lower Division.....	1	1	39	3	39	117	8
Upper Division.....	6	6	10	18	61	208	14
Graduate Level.....	10	5	13	11	113	313	26
Biosystems Engineering.....	8	6	6	16	49	145	11
Upper Division.....	3	3	7	9	20	60	4
Graduate Level.....	5	3	6	7	29	85	7
Molecular Biosc & Bioeng 14/.....	9	6	22	16	164	493	37
Lower Division.....	1	1	39	3	39	117	8
Upper Division.....	3	3	14	9	41	148	10
Graduate Level.....	5	2	25	4	84	228	19
Natural Res & Environ Mgt.....	17	12	25	29	312	883	62
Lower Division.....	2	3	56	9	169	507	34
Upper Division.....	7	5	17	10	93	249	17
Graduate Level.....	8	4	10	10	50	127	11
Agric & Resource Econ.....	2	1	7	3	8	22	2
Graduate Level.....	2	1	7	3	8	22	2
Natural Res & Environ Mgmt 14/.....	15	11	26	26	304	861	60
Lower Division.....	2	3	56	9	169	507	34
Upper Division.....	7	5	17	10	93	249	17
Graduate Level.....	6	3	11	7	42	105	9

TABLE 2 (cont.)

COURSE OFFERING	COURSES	CLASSES 1/ No.	Avg Size	SEM HOURS	STUD REGIS	STUDENT SEM HRS	COURSE FTE
Plant & Environ Protection Sciences.....	15	10	13	33	147	440	32
Lower Division.....	1	1	45	3	45	135	9
Upper Division.....	6	5	10	17	50	166	11
Graduate Level.....	8	4	9	13	52	139	12
Plant & Environ Protection Sci 14/.....	15	10	13	33	147	440	32
Lower Division.....	1	1	45	3	45	135	9
Upper Division.....	6	5	10	17	50	166	11
Graduate Level.....	8	4	9	13	52	139	12
Tropical Plant & Soil Sciences.....	16	14	12	33	189	483	36
Lower Division.....	2	2	18	4	35	85	6
Upper Division.....	8	7	12	18	91	248	17
Graduate Level.....	6	5	9	11	63	150	13
Tropical Plant & Soil Sciences 15/.....	16	14	12	33	189	483	36
Lower Division.....	2	2	18	4	35	85	6
Upper Division.....	8	7	12	18	91	248	17
Graduate Level.....	6	5	9	11	63	150	13
SCHOOL OF MEDICINE 16/.....	135	187	15	426	3,011	11,703	915
Lower Division.....	7	11	67	21	738	1,761	117
Upper Division.....	24	24	23	63	587	1,808	119
Graduate Level.....	104	152	11	342	1,686	8,134	679
Allied Medical Sci.....	36	51	9	144	478	1,342	97
Lower Division.....	2	2	21	4	41	82	5
Upper Division.....	14	17	15	42	249	734	48
Graduate Level.....	20	32	6	98	188	526	44
Medical Technology.....	11	10	9	45	88	234	16
Lower Division.....	2	2	21	4	41	82	5
Upper Division.....	7	6	7	14	42	97	6
Graduate Level.....	2	2	3	27	5	55	5
Speech Path & Audiology.....	25	41	10	99	390	1,108	81
Upper Division.....	7	11	19	28	207	637	42
Graduate Level.....	18	30	6	71	183	471	39
Anatomy & Repro Biol.....	3	2	6	4	13	37	3
Graduate Level.....	3	2	6	4	13	37	3
Anatomy.....	2	1	11	3	12	36	3
Graduate Level.....	2	1	11	3	12	36	3
Reproductive Biology.....	1	1	1	1	1	1	0
Graduate Level.....	1	1	1	1	1	1	0
Biochemistry & Biophysics.....	3	1	50	4	54	221	15
Upper Division.....	1	1	50	4	50	200	13
Graduate Level.....	2	0	0	0	4	21	2
Biochemistry.....	3	1	50	4	54	221	15
Upper Division.....	1	1	50	4	50	200	13
Graduate Level.....	2	0	0	0	4	21	2

TABLE 2 (cont.)

COURSE OFFERING	COURSES	CLASSES 1/ No. Avg Size	SEM HOURS	STUD REGIS	STUDENT SEM HRS	COURSE FTE
Biomedical Sciences.....	16	14 39	50	559	2,513	207
Upper Division.....	4	3 10	11	46	148	10
Graduate Level.....	12	11 46	39	513	2,365	197
Cell & Molecular Biology 17/.....	11	8 6	16	95	263	22
Upper Division.....	1	0 0	0	19	38	3
Graduate Level.....	10	8 6	16	76	225	19
Fam Prac & Comm Health.....	3	6 8	20	48	414	35
Graduate Level.....	3	6 8	20	48	414	35
Medicine.....	5	23 9	27	214	1,628	136
Graduate Level.....	5	23 9	27	214	1,628	136
Obstetrics, Gyn & Women's Health.....	6	9 6	33	57	377	31
Graduate Level.....	6	9 6	33	57	377	31
Pathology.....	2	2 11	0	24	82	7
Upper Division.....	1	0 0	0	2	3	0
Graduate Level.....	1	2 11	0	22	79	7
Pediatrics.....	3	10 6	15	60	450	38
Graduate Level.....	3	10 6	15	60	450	38
Pharmacology.....	1	1 131	3	131	393	26
Lower Division.....	1	1 131	3	131	393	26
Physiology.....	10	13 62	28	814	2,115	143
Lower Division.....	4	8 71	14	566	1,286	86
Upper Division.....	2	3 73	6	220	682	45
Graduate Level.....	4	2 8	8	28	147	12
Psychiatry.....	4	8 6	15	48	344	28
Upper Division.....	1	0 0	0	1	3	0
Graduate Level.....	3	8 6	15	47	341	28
Public Health Sci & Epidemiology 16/.....	21	20 10	37	215	517	43
Graduate Level.....	21	20 10	37	215	517	43
Surgery.....	4	14 11	21	154	907	76
Graduate Level.....	4	14 11	21	154	907	76
Trop Med & Med Micro.....	7	5 8	9	47	100	8
Graduate Level.....	7	5 8	9	47	100	8
SCH OF NURS AND DENT HYG 18/.....	67	132 13	258	1,789	4,169	287
Lower Division.....	6	13 9	18	120	200	13
Upper Division.....	44	95 15	195	1,459	3,385	225
Graduate Level.....	17	24 8	45	210	584	49
Dental Hygiene.....	22	54 8	65	432	626	41
Lower Division.....	6	13 9	18	120	200	13
Upper Division.....	16	41 8	47	312	426	28
Nursing.....	45	78 17	193	1,357	3,543	246
Upper Division.....	28	54 21	148	1,147	2,959	197
Graduate Level.....	17	24 8	45	210	584	49

TABLE 2 (cont.)

COURSE OFFERING	COURSES	CLASSES 1/ No. Avg Size		SEM HOURS	STUD REGIS	STUDENT SEM HRS	COURSE FTE
		No.	Avg Size				
SCHOOL OF SOCIAL WORK.....	32	51	19	121	961	2,903	234
Lower Division.....	1	1	36	3	36	108	7
Upper Division.....	6	6	21	19	126	399	27
Graduate Level.....	25	44	18	99	799	2,396	200
SCHOOL OF LAW.....	47	61	29	98	1,799	4,788	399
Graduate Level.....	47	61	29	98	1,799	4,788	399
MILITARY STUDIES.....	11	20	10	50	208	469	31
Lower Division.....	6	12	12	21	141	239	16
Upper Division.....	5	8	8	29	67	230	15
Aerospace Studies.....	5	9	14	17	122	232	15
Lower Division.....	3	6	14	8	86	124	8
Upper Division.....	2	3	12	9	36	108	7
Military Science.....	6	11	8	33	86	237	16
Lower Division.....	3	6	9	13	55	115	8
Upper Division.....	3	5	6	20	31	122	8

- 1/ Excludes classes numbered -99 (Individual Instruction), 700 (Thesis Research), and 800 (Dissertation Research).
- 2/ Formerly called European Languages and Literature; name changed to Languages and Literatures of Europe and the Americas effective Fall 2000.
- 3/ Arabic and Hawaiian, Asian and Pacific Studies were added in Fall 2002.
- 4/ Maori added in Fall 2003.
- 5/ Formerly called English as a Second Language; name changed to Second Language Studies effective July 2000.
- 6/ Departments of Communication and Journalism were merged under the School of Communications as of June 2000.
- 7/ International Cultural Studies added in Fall 2000.
- 8/ Formerly called Ocean Engineering; name changed to Ocean and Resources Engineering effective Spring 2000.
- 9/ Formerly called Decision Sciences; name changed to Information Technology Management effective Fall 2000.
- 10/ In Fall 2002, the Department of Teacher Education and Curriculum Studies (TECS) was reorganized into two new units The Institute for Teacher Education (ITE) and Curriculum Studies (EDCS). New course alphas, EDCS and ITE, were added in Fall 2003.
- 11/ Formerly called Civil Engineering; name changed to Civil and Environmental Engineering effective Fall 2002.
- 12/ College of Trop Ag & Hum Resources was reorganized in 1999-2000.
- 13/ Formerly called Textiles and Clothing; name changed to Apparel, Product, Design & Merchandising effective Fall 2001.
- 14/ Molecular Biosciences & Bioengineering, Natural Resources, Environmental Management and Plant & Environmental Protection Sciences added in Spring 2002.
- 15/ Tropical Plant and Soil Sciences added in Fall 2001.
- 16/ School of Public Health was consolidated into School of Medicine effective Fall 2000.
- 17/ Formerly called Genetics and Molecular Biology; name changed to Cell and Molecular Biology effective Spring 2001.
- 18/ Formerly called School of Nursing; name changed School of Nursing and Dental Hygiene effective July 2000.

SOURCE: Computer Report 3011: "Course Registration Summary Report" and
Computer Report 3011C: "Number of Classes and Average Class Size."

TABLE 3
STUDENT SEMESTER HOURS (SSH) AND COURSE FTE
UNIVERSITY OF HAWAII AT MANOA
FALL 1999 TO FALL 2003

COLLEGE AND LEVEL	FALL 1999 1/			FALL 2000			FALL 2001			FALL 2002			FALL 2003		
	SSH No.	%C	COURSE FTE	SSH No.	%C	COURSE FTE	SSH No.	%C	COURSE FTE	SSH No.	%C	COURSE FTE	SSH No.	%C	COURSE FTE
TOTAL.....	195,650	NA	13,643	191,238	-2.3	13,337	197,971	3.5	13,801	213,592	7.9	14,876	226,357	6.0	15,758
Lower Division.....	90,431		6,027	88,635	-2.0	5,908	93,762	5.8	6,251	98,834	5.4	6,590	103,324	4.5	6,887
Upper Division.....	69,712		4,650	67,516	-3.2	4,498	68,368	1.3	4,556	76,721	12.2	5,118	82,847	8.0	5,514
Graduate Level.....	35,507		2,966	35,087	-1.2	2,931	35,841	2.1	2,994	38,037	6.1	3,168	40,186	5.6	3,357
COLLEGE OF ARTS & SCIENCES	119,918		8,161	116,945	-2.5	7,954	121,197	3.6	8,243	130,477	7.7	8,871	137,028	5.0	9,324
Lower Division.....	74,020		4,932	73,356	-0.9	4,889	76,243	3.9	5,083	80,329	5.4	5,355	82,127	2.2	5,474
Upper Division.....	36,202		2,414	34,190	-5.6	2,277	35,326	3.3	2,354	39,748	12.5	2,651	43,364	9.1	2,886
Graduate Level.....	9,696		815	9,399	-3.1	788	9,628	2.4	806	10,400	8.0	865	11,537	10.9	964
Arts and Humanities.....	29,958		2,025	30,152	0.6	2,037	30,680	1.8	2,076	32,449	5.8	2,191	31,566	-2.7	2,135
Lower Division.....	18,814		1,253	19,500	3.6	1,300	19,988	2.5	1,334	20,003	0.1	1,334	18,566	-7.2	1,239
Upper Division.....	9,476		632	9,091	-4.1	606	9,042	-0.5	603	10,801	19.5	721	11,220	3.9	747
Graduate Level.....	1,668		140	1,561	-6.4	131	1,650	5.7	139	1,645	-0.3	136	1,780	8.2	149
Lang, Ling and Lit.....	29,796		2,025	28,929	-2.9	1,965	29,289	1.2	1,984	31,017	5.9	2,101	33,881	9.2	2,293
Lower Division.....	19,669		1,310	18,709	-4.9	1,247	19,217	2.7	1,281	20,136	4.8	1,342	21,189	5.2	1,411
Upper Division.....	8,024		536	8,110	1.1	540	8,192	1.0	545	8,890	8.5	594	10,503	18.1	698
Graduate Level.....	2,103		179	2,110	0.3	178	1,880	-10.9	158	1,991	5.9	165	2,189	9.9	184
Natural Sciences	28,831		1,961	27,683	-4.0	1,882	29,007	4.8	1,968	32,074	10.6	2,183	33,759	5.3	2,301
Lower Division.....	21,393		1,426	20,829	-2.6	1,388	21,925	5.3	1,460	24,008	9.5	1,601	25,245	5.2	1,683
Upper Division.....	5,061		336	4,662	-7.9	311	4,858	4.2	323	5,450	12.2	363	5,528	1.4	369
Graduate Level.....	2,377		199	2,192	-7.8	183	2,224	1.5	185	2,616	17.6	219	2,986	14.1	249
Social Sciences.....	30,343		2,083	29,332	-3.3	2,011	31,300	6.7	2,151	33,529	7.1	2,300	36,407	8.6	2,498
Lower Division.....	13,542		903	13,767	1.7	917	14,587	6.0	973	15,256	4.6	1,016	16,243	6.5	1,082
Upper Division.....	13,338		890	12,106	-9.2	805	12,944	6.9	863	14,227	9.9	947	15,753	10.7	1,048
Graduate Level.....	3,463		290	3,459	-0.1	289	3,769	9.0	315	4,046	7.3	337	4,411	9.0	368
Other Arts & Sciences.....	990		67	849	-14.2	59	921	8.5	64	1,408	52.9	96	1,415	0.5	97
Lower Division.....	602		40	551	-8.5	37	526	-4.5	35	926	76.0	62	884	-4.5	59
Upper Division.....	303		20	221	-27.1	15	290	31.2	20	380	31.0	26	360	-5.3	24
Graduate Level.....	85		7	77	-9.4	7	105	36.4	9	102	-2.9	8	171	67.6	14
SCH OF HAWN, ASIAN & PAC STUD.....	2,200		154	2,001	-9.0	140	2,326	16.2	159	3,030	30.3	207	5,091	68.0	344
Lower Division.....	1,049		70	960	-8.5	64	1,200	25.0	80	1,642	36.8	110	3,356	104.4	223
Upper Division.....	768		52	643	-16.3	43	847	31.7	56	1,105	30.5	74	1,362	23.3	90
Graduate Level.....	383		32	398	3.9	33	279	-29.9	23	283	1.4	23	373	31.8	31
SCH OF OCEAN & EARTH SCI TECH....	4,277		303	4,524	5.8	322	5,029	11.2	354	4,735	-5.8	336	4,901	3.5	348
Lower Division.....	2,442		162	2,669	9.3	177	2,980	11.7	198	2,654	-10.9	176	2,645	-0.3	177
Upper Division.....	696		46	664	-4.6	45	929	39.9	62	901	-3.0	61	955	6.0	63
Graduate Level.....	1,139		95	1,191	4.6	100	1,120	-6.0	94	1,180	5.4	99	1,301	10.3	108

TABLE 3 (cont.)

COLLEGE AND LEVEL	FALL 1999 1/			FALL 2000			FALL 2001			FALL 2002			FALL 2003		
	SSH No.	COURSE %C	FTE	SSH No.	COURSE %C	FTE	SSH No.	COURSE %C	FTE	SSH No.	COURSE %C	FTE	SSH No.	COURSE %C	FTE
SCHOOL OF ARCHITECTURE.....	2,602	178		2,269	-12.8	155	2,043	-10.0	142	2,003	-2.0	140	2,318	15.7	160
Lower Division.....	851	57		853	0.2	57	977	14.5	65	940	-3.8	63	910	-3.2	61
Upper Division.....	1,489	99		1,224	-17.8	82	713	-41.7	48	716	0.4	48	1,080	50.8	72
Graduate Level.....	262	22		192	-26.7	16	353	83.9	29	347	-1.7	29	328	-5.5	27
COLLEGE OF BUSINESS ADMIN.....	14,720	1,031		14,492	-1.5	1,017	14,872	2.6	1,048	16,723	12.4	1,176	17,402	4.1	1,226
Lower Division.....	2,322	155		2,397	3.2	159	2,338	-2.5	155	3,015	29.0	201	3,144	4.3	210
Upper Division.....	9,501	634		8,982	-5.5	598	9,119	1.5	608	10,081	10.5	672	10,425	3.4	695
Graduate Level.....	2,897	242		3,113	7.5	260	3,415	9.7	285	3,627	6.2	303	3,833	5.7	321
SCHOOL OF TRAVEL IND MGT.....	2,136	145		2,233	4.5	151	2,621	17.4	178	2,987	14.0	202	2,918	-2.3	198
Lower Division.....	480	32		521	8.5	35	744	42.8	50	807	8.5	54	911	12.9	61
Upper Division.....	1,515	101		1,591	5.0	106	1,750	10.0	117	2,009	14.8	134	1,844	-8.2	123
Graduate Level.....	141	12		121	-14.2	10	127	5.0	11	171	34.6	14	163	-4.7	14
COLLEGE OF EDUCATION.....	13,833	1,001		13,795	-0.3	1,001	14,673	6.4	1,061	16,691	13.8	1,201	17,599	5.4	1,257
Lower Division.....	1,474	99		1,278	-13.3	86	1,716	34.3	115	2,243	30.7	150	2,346	4.6	156
Upper Division.....	7,676	512		7,832	2.0	523	7,965	1.7	530	9,160	15.0	610	10,228	11.7	682
Graduate Level.....	4,683	390		4,685	0.0	392	4,992	6.6	416	5,288	5.9	441	5,025	-5.0	419
COLLEGE OF ENGINEERING.....	4,758	332		4,628	-2.7	322	4,653	0.5	322	5,187	11.5	360	5,245	1.1	362
Lower Division.....	1,222	81		1,095	-10.4	74	1,181	7.9	79	1,261	6.8	84	1,235	-2.1	82
Upper Division.....	2,585	172		2,727	5.5	181	2,784	2.1	186	3,087	10.9	206	3,211	4.0	213
Graduate Level.....	951	79		806	-15.2	67	688	-14.6	57	839	21.9	70	799	-4.8	67
COLL OF TROP AG & HUM RES 2/.....	10,106	682		8,868	-12.3	602	9,316	5.1	633	8,788	-5.7	599	9,823	11.8	673
Lower Division.....	4,933	329		3,846	-22.0	256	4,639	20.6	309	4,002	-13.7	267	4,342	8.5	290
Upper Division.....	4,697	314		4,421	-5.9	296	4,016	-9.2	268	3,991	-0.6	267	4,556	14.2	304
Graduate Level.....	476	39		601	26.3	50	661	10.0	56	795	20.3	65	925	16.4	79
HEALTH SCI & SOC WELFARE.....				243		20									
Graduate Level.....				243		20									
SCHOOL OF MEDICINE 3/.....	11,213	885		11,034	-1.6	865	11,119	0.8	879	11,521	3.6	907	11,703	1.6	915
Lower Division.....	1,247	83		1,221	-2.1	81	1,271	4.1	85	1,449	14.0	97	1,761	21.5	117
Upper Division.....	1,672	111		1,963	17.4	130	1,606	-18.2	106	1,849	15.1	124	1,808	-2.2	119
Graduate Level.....	8,294	691		7,850	-5.4	654	8,242	5.0	688	8,223	-0.2	686	8,134	-1.1	679
SCH OF NURS & DENTAL HYG 4/.....	3,090	216		3,442	11.4	238	3,419	-0.7	236	3,998	16.9	274	4,169	4.3	287
Lower Division.....	210	14		220	4.8	15	200	-9.1	13	200	0.0	13	200	0.0	13
Upper Division.....	2,330	156		2,710	16.3	180	2,755	1.7	184	3,282	19.1	218	3,385	3.1	225
Graduate Level.....	550	46		512	-6.9	43	464	-9.4	39	516	11.2	43	584	13.2	49
SCHOOL OF SOCIAL WORK.....	2,895	234		2,744	-5.2	221	2,633	-4.0	213	2,836	7.7	229	2,903	2.4	234
Lower Division.....	84	6		90	7.1	6	84	-6.7	6	87	3.6	6	108	24.1	7
Upper Division.....	387	26		350	-9.6	23	355	1.4	24	346	-2.5	23	399	15.3	27
Graduate Level.....	2,424	202		2,304	-5.0	192	2,194	-4.8	183	2,403	9.5	200	2,396	-0.3	200

TABLE 3 (cont.)

COLLEGE AND LEVEL	FALL 1999 1/			FALL 2000			FALL 2001			FALL 2002			FALL 2003		
	SSH No.	%C	COURSE FTE	SSH No.	%C	COURSE FTE	SSH No.	%C	COURSE FTE	SSH No.	%C	COURSE FTE	SSH No.	%C	COURSE FTE
SCHOOL OF LAW.....	3,611		301	3,672	1.7	306	3,678	0.2	307	3,965	7.8	330	4,788	20.8	399
Graduate Level.....	3,611		301	3,672	1.7	306	3,678	0.2	307	3,965	7.8	330	4,788	20.8	399
MILITARY STUDIES.....	291		20	348	19.6	23	392	12.6	26	651	66.1	44	469	-28.0	31
Lower Division.....	97		7	129	33.0	9	189	46.5	13	205	8.5	14	239	16.6	16
Upper Division.....	194		13	219	12.9	14	203	-7.3	13	446	119.7	30	230	-48.4	15

1/ Beginning in Fall 1999, includes Outreach College fall term classes as of census date. Percentage change for Fall 1999 is therefore not comparable with prior year.

2/ College of Tropical Agriculture and Human Resources was reorganized in 1999-2000.

3/ School of Public Health was consolidated into School of Medicine effective Fall 2000. Figures have been adjusted and differ from those reported previously.

4/ Formerly called School of Nursing; name changed to School of Nursing and Dental Hygiene effective July 2000.

SOURCE: Computer Report 3011: "Course Registration Summary Report."

TABLE 4
NUMBER OF CLASSES AND AVERAGE CLASS SIZE 1/
UNIVERSITY OF HAWAII AT MANOA
FALL 1999 TO FALL 2003

COLLEGE AND LEVEL	FALL 1999 2/			FALL 2000			FALL 2001			FALL 2002			FALL 2003		
	Classes		Avg Size	Classes		Avg Size	Classes		Avg Size	Classes		Avg Size	Classes		Avg Size
	No.	%C		No.	%C		No.	%C		No.	%C		No.	%C	
TOTAL.....	3,354	NA	20	3,299	-1.6	20	3,320	0.6	20	3,504	5.5	21	3,502	-0.1	22
Lower Division.....	1,079		30	1,059	-1.9	30	1,101	4.0	31	1,147	4.2	31	1,138	-0.8	33
Upper Division.....	1,336		18	1,312	-1.8	18	1,285	-2.1	18	1,400	8.9	19	1,417	1.2	20
Graduate Level.....	939		11	928	-1.2	11	934	0.6	11	957	2.5	11	947	-1.0	12
COLLEGE OF ARTS & SCIENCES	1,952		21	1,880	-3.7	21	1,943	3.4	22	1,990	2.4	23	1,970	-1.0	24
Lower Division.....	891		29	881	-1.1	30	899	2.0	30	921	2.4	31	898	-2.5	32
Upper Division.....	684		18	647	-5.4	18	669	3.4	18	706	5.5	19	707	0.1	21
Graduate Level	377		7	352	-6.6	7	375	6.5	7	363	-3.2	8	365	0.6	9
Arts and Humanities.....	505		21	486	-3.8	22	501	3.1	22	498	-0.6	23	470	-5.6	24
Lower Division.....	207		32	208	0.5	33	209	0.5	33	204	-2.4	34	189	-7.4	35
Upper Division.....	212		17	200	-5.7	18	196	-2.0	18	219	11.7	19	202	-7.8	21
Graduate Level.....	86		5	78	-9.3	5	96	23.1	5	75	-21.9	6	79	5.3	6
Lang, Ling and Lit.....	611		15	579	-5.2	15	602	4.0	15	622	3.3	15	632	1.6	17
Lower Division.....	337		17	315	-6.5	17	332	5.4	17	352	6.0	18	346	-1.7	19
Upper Division.....	190		14	185	-2.6	14	196	5.9	14	193	-1.5	15	212	9.8	16
Graduate Level.....	84		7	79	-6.0	8	74	-6.3	7	77	4.1	8	74	-3.9	8
Natural Sciences	378		30	377	-0.3	29	386	2.4	30	392	1.6	31	398	1.5	32
Lower Division.....	221		40	229	3.6	38	236	3.1	39	221	-6.4	43	223	0.9	44
Upper Division.....	82		22	80	-2.4	21	81	1.3	21	95	17.3	20	95	0.0	21
Graduate Level	75		8	68	-9.3	8	69	1.5	9	76	10.1	10	80	5.3	10
Social Sciences.....	412		24	397	-3.6	24	414	4.3	24	422	1.9	26	414	-1.9	29
Lower Division.....	94		49	99	5.3	47	94	-5.1	52	103	9.6	50	101	-1.9	54
Upper Division.....	189		23	174	-7.9	23	186	6.9	22	187	0.5	25	185	-1.1	28
Graduate Level.....	129		7	124	-3.9	8	134	8.1	8	132	-1.5	8	128	-3.0	9
Other Arts & Sciences.....	46		12	41	-10.9	13	40	-2.4	14	56	40.0	13	56	0.0	13
Lower Division.....	32		13	30	-6.3	14	28	-6.7	14	41	46.4	14	39	-4.9	13
Upper Division.....	11		10	8	-27.3	9	10	25.0	10	12	20.0	10	13	8.3	9
Graduate Level.....	3		15	3	0.0	15	2	-33.3	28	3	50.0	20	4	33.3	20
SCH HAWN, ASIAN & PAC STUDIES..	38		19	37	-2.6	18	40	8.1	19	46	15.0	22	72	56.5	22
Lower Division.....	12		30	10	-16.7	33	11	10.0	38	17	54.5	33	31	82.4	34
Upper Division.....	13		19	13	0.0	17	17	30.8	17	19	11.8	19	27	42.1	16
Graduate Level.....	13		9	14	7.7	8	12	-14.3	7	10	-16.7	9	14	40.0	7
SCH OCEAN & EARTH SCI TECH.....	82		17	80	-2.4	18	89	11.2	19	86	-3.4	18	88	2.3	19
Lower Division.....	24		38	25	4.2	40	29	16.0	40	29	0.0	37	30	3.4	36
Upper Division.....	21		11	19	-9.5	11	26	36.8	12	21	-19.2	14	23	9.5	14
Graduate Level.....	37		6	36	-2.7	6	34	-5.6	5	36	5.9	5	35	-2.8	6

TABLE 4 (cont.)

COLLEGE AND LEVEL	FALL 1999 2/			FALL 2000			FALL 2001			FALL 2002			FALL 2003		
	Classes No.	Avg %C	Avg Size	Classes No.	Avg %C	Avg Size	Classes No.	Avg %C	Avg Size	Classes No.	Avg %C	Avg Size	Classes No.	Avg %C	Avg Size
SCHOOL OF ARCHITECTURE.....	45	18		47	4.4	15	37	-21.3	17	35	-5.4	16	35	0.0	20
Lower Division.....	10	28		11	10.0	25	10	-9.1	30	9	-10.0	31	10	11.1	28
Upper Division.....	23	21		21	-8.7	18	15	-28.6	16	17	13.3	12	18	5.9	19
Graduate Level.....	12	5		15	25.0	3	12	-20.0	7	9	-25.0	9	7	-22.2	9
COLLEGE OF BUSINESS ADMIN.....	160	31		154	-3.8	32	158	2.6	32	175	10.8	32	184	5.1	32
Lower Division.....	15	52		15	0.0	54	16	6.7	49	20	25.0	49	22	10.0	47
Upper Division.....	108	29		104	-3.7	29	100	-3.8	30	113	13.0	30	115	1.8	30
Graduate Level.....	37	29		35	-5.4	30	42	20.0	28	42	0.0	30	47	11.9	29
SCHOOL OF TRAVEL IND MGT.....	34	24		30	-11.8	27	31	3.3	30	37	19.4	29	35	-5.4	30
Lower Division.....	6	35		5	-16.7	46	5	0.0	58	6	20.0	52	7	16.7	50
Upper Division.....	24	23		22	-8.3	26	22	0.0	28	25	13.6	28	24	-4.0	27
Graduate Level.....	4	12		3	-25.0	9	4	33.3	10	6	50.0	9	4	-33.3	13
COLLEGE OF EDUCATION.....	375	13		410	9.3	12	362	-11.7	15	428	18.2	14	421	-1.6	15
Lower Division.....	35	27		35	0.0	25	40	14.3	28	52	30.0	29	55	5.8	31
Upper Division.....	210	12		218	3.8	12	188	-13.8	14	212	12.8	14	219	3.3	15
Graduate Level.....	130	11		157	20.8	9	134	-14.6	11	164	22.4	10	147	-10.4	10
COLLEGE OF ENGINEERING.....	131	12		116	-11.5	14	121	4.3	13	132	9.1	13	119	-9.8	15
Lower Division.....	21	19		16	-23.8	23	24	50.0	17	26	8.3	17	20	-23.1	22
Upper Division.....	78	12		74	-5.1	13	70	-5.4	14	76	8.6	15	74	-2.6	16
Graduate Level.....	32	8		26	-18.8	8	27	3.8	7	30	11.1	7	25	-16.7	8
COLL OF TROP AG & HUM RES 3/....	112	30		113	0.9	26	114	0.9	27	118	3.5	24	127	7.6	25
Lower Division.....	28	59		26	-7.1	50	30	15.4	52	31	3.3	44	28	-9.7	52
Upper Division.....	65	24		67	3.1	22	63	-6.0	21	66	4.8	20	77	16.7	20
Graduate Level.....	19	6		20	5.3	8	21	5.0	8	21	0.0	9	22	4.8	11
HEALTH SCI & SOC WELFARE.....				2		41									
Graduate Level.....				2		41		-100.0							
SCHOOL OF MEDICINE 4/.....	207	14		189	-8.7	15	192	1.6	15	189	-1.6	15	187	-1.1	15
Lower Division.....	12	45		11	-8.3	48	11	0.0	49	11	0.0	55	11	0.0	67
Upper Division.....	24	22		23	-4.2	26	24	4.3	21	22	-8.3	25	24	9.1	23
Graduate Level.....	171	10		155	-9.4	10	157	1.3	11	156	-0.6	11	152	-2.6	11
SCH OF NURS & DENTAL HYG 5/....	103	13		120	16.5	12	110	-8.3	13	144	30.9	12	132	-8.3	13
Lower Division.....	13	10		13	0.0	10	13	0.0	9	13	0.0	9	13	0.0	9
Upper Division.....	74	13		91	23.0	13	79	-13.2	15	110	39.2	13	95	-13.6	15
Graduate Level.....	16	11		16	0.0	9	18	12.5	8	21	16.7	8	24	14.3	8
SCHOOL OF SOCIAL WORK.....	47	20		48	2.1	19	49	2.1	17	49	0.0	19	51	4.1	19
Lower Division.....	1	28		1	0.0	30	1	0.0	28	1	0.0	29	1	0.0	36
Upper Division.....	6	20		6	0.0	19	6	0.0	19	6	0.0	18	6	0.0	21
Graduate Level.....	40	20		41	2.5	18	42	2.4	17	42	0.0	18	44	4.8	18

TABLE 4 (cont.)

COLLEGE AND LEVEL	FALL 1999 2/			FALL 2000			FALL 2001			FALL 2002			FALL 2003		
	Classes No.	%C	Avg Size	Classes No.	%C	Avg Size	Classes No.	%C	Avg Size	Classes No.	%C	Avg Size	Classes No.	%C	Avg Size
SCHOOL OF LAW.....	51		26	56	9.8	25	56	0.0	24	57	1.8	26	61	7.0	29
Graduate Level.....	51		26	56	9.8	25	56	0.0	24	57	1.8	26	61	7.0	29
MILITARY STUDIES.....	17		7	17	0.0	8	18	5.9	9	18	0.0	10	20	11.1	10
Lower Division.....	11		5	10	-9.1	8	12	20.0	9	11	-8.3	11	12	9.1	12
Upper Division.....	6		9	7	16.7	9	6	-14.3	9	7	16.7	9	8	14.3	8

1/ Excludes classes numbered -99 (Individual Instruction), 700 (Thesis Research) and 800 (Dissertation Research).

2/ Beginning Fall 1999, includes Outreach College fall term classes as of census date. Percentage change for Fall 1999 is therefore not comparable with prior year.

3/ College of Tropical Agriculture and Human Resources was reorganized in 1999-2000.

4/ School of Public Health was consolidated into School of Medicine effective Fall 2000. Figures have been adjusted and differ from those reported previously.

5/ Formerly called School of Nursing; name changed to School of Nursing and Dental Hygiene effective July 2000.

SOURCE: Computer Report 3011C: "Number of Classes and Average Class Size."