

COURSE REGISTRATION REPORT
UNIVERSITY OF HAWAI'I AT MANOA
FALL 1996

Institutional Research Office
University of Hawai'i
October 1996

University of Hawai'i at Manoa - Fall Semesters

Figure 1
Number of Classes

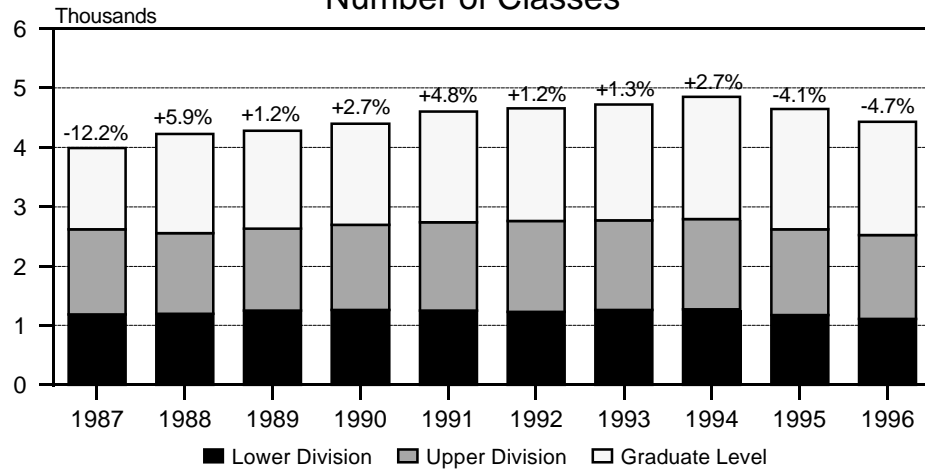


Figure 2
Student Registrations

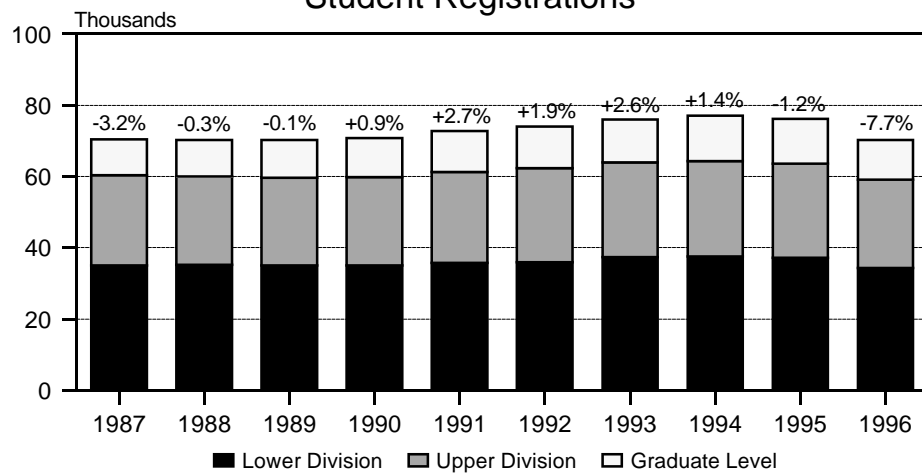
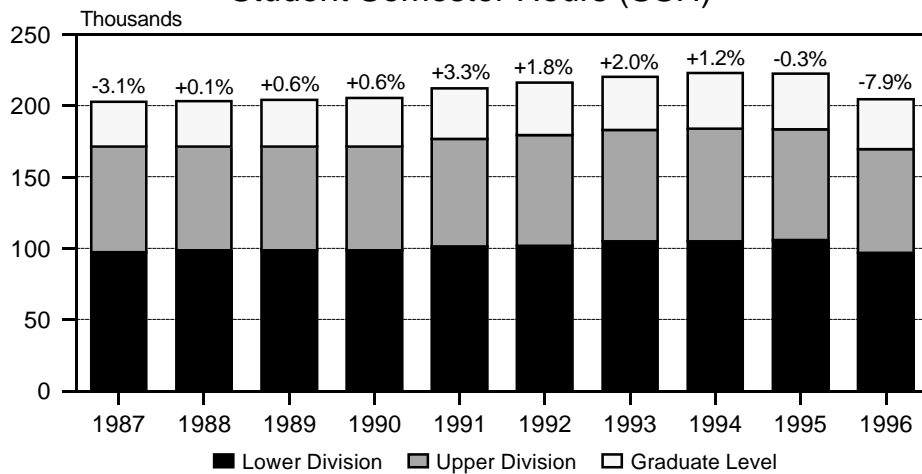


Figure 3
Student Semester Hours (SSH)



University of Hawai'i at Manoa - Fall Semesters

Figure 4
Course FTE

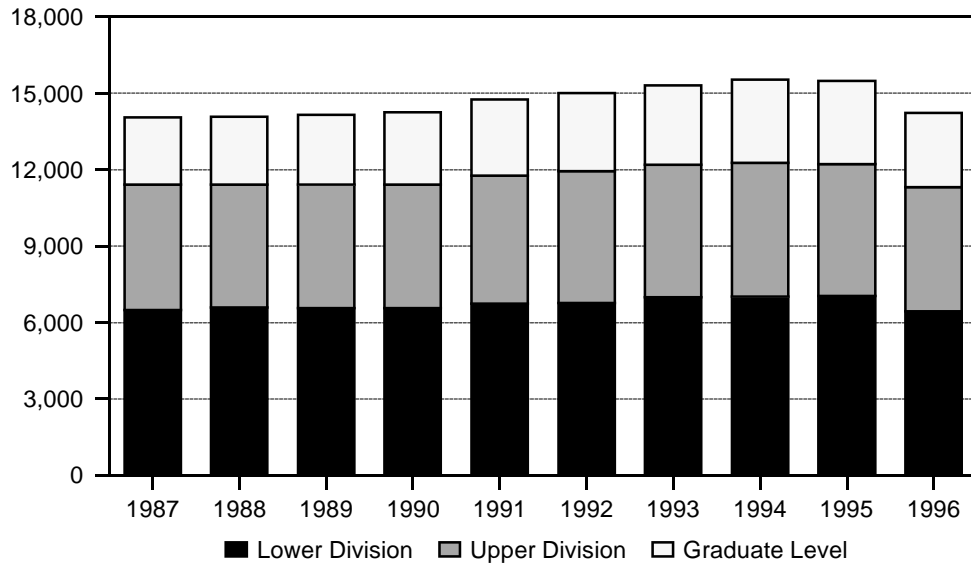


Figure 5
Course FTE, by College

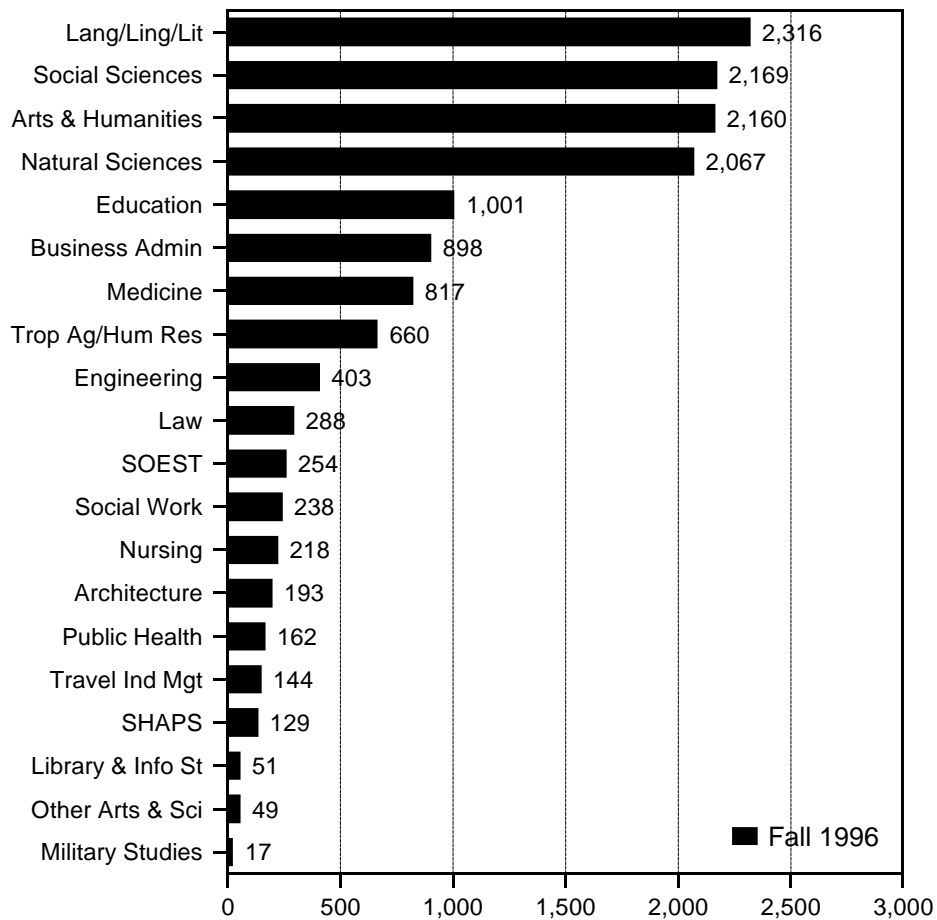


Figure 6
Average Class Size

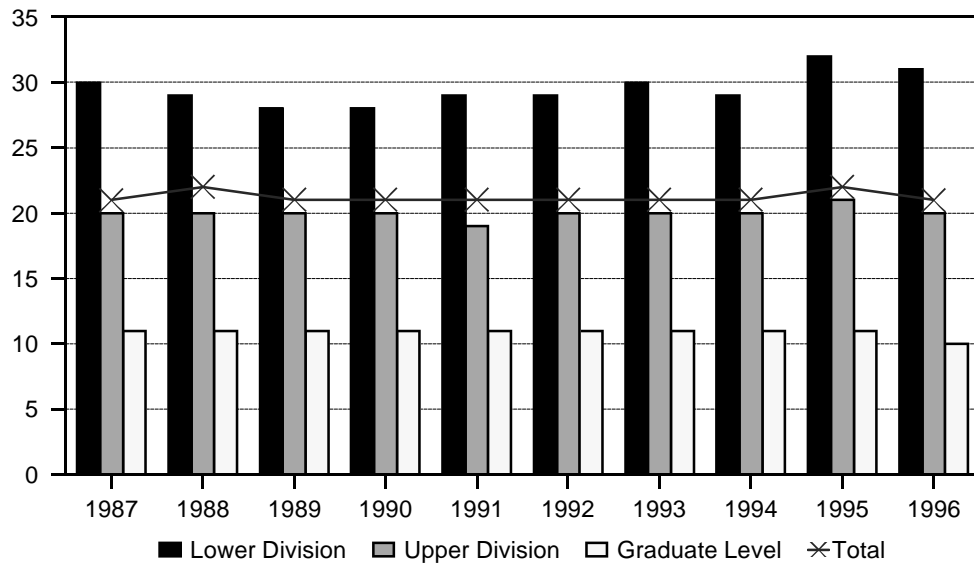


Figure 7
Average Class Size, by College

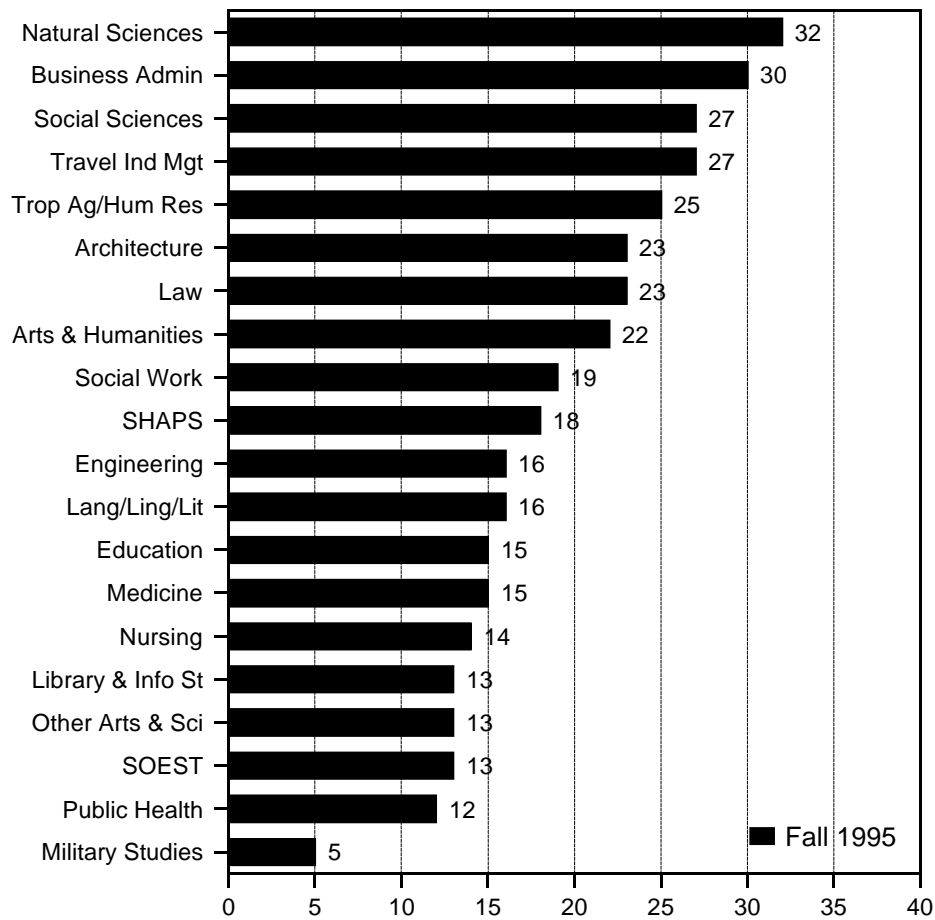


TABLE 1
 COURSE REGISTRATION SUMMARY, BY COURSE LEVEL
 UNIVERSITY OF HAWAII AT MANOA
 FALL 1992 TO FALL 1996

COURSE LEVEL	COURSES		CLASSES		SEM HOURS		STUDENT REGIS		SSH	
	No.	%C	No.	%C	No.	%C	No.	%C	No.	%C
FALL 1992 TOTAL	2,400	-0.9	4,659	1.2	9,547	0.6	74,104	1.9	216,000	1.8
0-99	6	0.0	20	-9.1	60	-9.1	382	-1.3	1,146	-1.3
100-199	210	1.4	696	1.3	1,827	2.0	23,381	2.8	64,729	3.1
200-299	227	-8.8	517	-5.0	1,461	-6.5	12,147	-3.5	35,733	-4.4
300-499	1,023	1.1	1,523	2.7	3,798	2.8	26,378	3.1	77,879	3.4
500-599	102	8.5	113	9.7	315	12.9	2,428	7.2	9,793	3.1
600-800	832	-2.6	1,790	1.5	2,086	-0.4	9,388	2.4	26,720	2.5
FALL 1993 TOTAL	2,409	0.4	4,719	1.3	9,584	0.4	76,048	2.6	220,309	2.0
0-99	6	0.0	22	10.0	66	10.0	416	8.9	1,248	8.9
100-199	216	2.9	733	5.3	1,869	2.3	24,809	6.1	67,422	4.2
200-299	225	-0.9	509	-1.5	1,460	-0.1	12,227	0.7	36,113	1.1
300-499	1,027	0.4	1,507	-1.1	3,767	-0.8	26,474	0.4	78,234	0.5
500-599	104	2.0	123	8.8	335	6.3	2,487	2.4	9,856	0.6
600-800	831	-0.1	1,825	2.0	2,087	0.0	9,635	2.6	27,436	2.7
FALL 1994 TOTAL	2,427	0.7	4,845	2.7	9,787	2.1	77,094	1.4	223,005	1.2
0-99	6	0.0	20	-9.1	60	-9.1	299	-28.1	897	-28.1
100-199	218	0.9	752	2.6	1,924	2.9	25,033	0.9	67,672	0.4
200-299	200	-11.1	505	-0.8	1,426	-2.3	12,273	0.4	36,545	1.2
300-499	1,022	-0.5	1,517	0.7	3,845	2.1	26,659	0.7	78,766	0.7
500-599	108	3.8	163	32.5	339	1.2	2,605	4.7	9,956	1.0
600-800	873	5.1	1,888	3.5	2,193	5.1	10,225	6.1	29,169	6.3
FALL 1995 TOTAL	2,367	-2.5	4,645	-4.1	9,288	-5.1	76,164	-1.2	222,268	-0.3
0-99	6	0.0	14	-30.0	42	-30.0	218	-27.1	654	-27.1
100-199	190	-12.8	657	-12.6	1,730	-10.1	24,158	-3.5	67,155	-0.8
200-299	209	4.5	508	0.6	1,436	0.7	12,775	4.1	37,758	3.3
300-499	975	-4.6	1,437	-5.3	3,567	-7.2	26,478	-0.7	77,637	-1.4
500-599	120	11.1	163	0.0	344	1.5	2,544	-2.3	10,039	0.8
600-800	867	-0.7	1,866	-1.2	2,169	-1.1	9,991	-2.3	29,025	-0.5
FALL 1996 TOTAL	2,290	-3.3	4,427	-4.7	8,846	-4.8	70,307	-7.7	204,654	-7.9
0-99	6	0.0	15	7.1	45	7.1	245	12.4	735	12.4
100-199	193	1.6	596	-9.3	1,530	-11.6	21,948	-9.1	60,008	-10.6
200-299	200	-4.3	498	-2.0	1,413	-1.6	12,175	-4.7	35,996	-4.7
300-499	972	-0.3	1,415	-1.5	3,569	0.1	24,813	-6.3	72,997	-6.0
500-599	115	-4.2	173	6.1	338	-1.7	2,548	0.2	10,263	2.2
600-800	804	-7.3	1,730	-7.3	1,951	-10.1	8,578	-14.1	24,655	-15.1

SOURCE: Computer Report 3011: "Course Registration Summary Report."
 Computer Report 3011C: "Number of Classes and Average Class Size."

TABLE 2
 COURSE REGISTRATION SUMMARY
 UNIVERSITY OF HAWAI'I AT MANOA
 FALL 1996

COURSE OFFERING	COURSES	CLASSES *		SEM HOURS	STUD REGIS	STUDENT SEM HRS	COURSE FTE
		No.	Avg Size				
TOTAL.....	2,290	3,241	21	8,846	70,307	204,654	14,234
Lower Division.....	399	1,104	31	2,988	34,368	96,739	6,452
Upper Division.....	972	1,227	20	3,569	24,813	72,997	4,864
Graduate Level.....	919	910	10	2,289	11,126	34,918	2,918
COLLEGE OF ARTS & SCIENCES.....	1,279	1,951	23	5,218	45,738	129,022	8,761
Lower Division.....	301	934	31	2,570	28,828	82,027	5,470
Upper Division.....	576	659	20	1,768	13,354	37,616	2,506
Graduate Level.....	402	358	7	880	3,556	9,379	785
Arts and Humanities.....	397	519	22	1,220	11,735	31,948	2,160
Lower Division.....	102	214	33	521	7,104	20,140	1,342
Upper Division.....	188	210	18	498	3,901	9,892	659
Graduate Level.....	107	95	5	201	730	1,916	159
American Studies.....	25	35	23	103	863	2,540	175
Lower Division.....	4	16	26	48	421	1,263	84
Upper Division.....	9	9	32	27	292	876	58
Graduate Level.....	12	10	10	28	150	401	33
Art.....	84	113	17	283	1,984	5,917	399
Lower Division.....	29	61	23	175	1,376	4,074	272
Upper Division.....	35	34	15	99	537	1,604	107
Graduate Level.....	20	18	3	9	71	239	20
Dance.....	28	28	14	67	396	1,074	73
Lower Division.....	7	9	20	27	183	549	37
Upper Division.....	17	16	13	36	201	503	34
Graduate Level.....	4	3	4	4	12	22	2
History.....	63	69	40	207	2,826	8,397	566
Lower Division.....	10	19	104	57	1,982	5,946	396
Upper Division.....	34	34	20	102	673	2,017	134
Graduate Level.....	19	16	7	48	171	434	36
Music.....	79	125	15	143	2,013	3,262	221
Lower Division.....	23	51	14	48	777	1,263	84
Upper Division.....	40	60	19	59	1,156	1,798	120
Graduate Level.....	16	14	5	36	80	201	17
Philosophy.....	28	34	18	105	648	1,911	130
Lower Division.....	5	13	32	39	420	1,260	84
Upper Division.....	14	14	11	45	155	468	31
Graduate Level.....	9	7	6	21	73	183	15
Religion.....	22	24	40	75	983	2,931	198
Lower Division.....	8	13	64	39	829	2,487	166
Upper Division.....	6	5	21	18	104	312	21
Graduate Level.....	8	6	6	18	50	132	11
Speech.....	29	40	32	123	1,303	3,902	261
Lower Division.....	7	14	51	42	712	2,136	142
Upper Division.....	16	22	25	69	555	1,669	111
Graduate Level.....	6	4	5	12	36	97	8

TABLE 2 (cont.)

COURSE OFFERING	COURSES	CLASSES *		SEM HOURS	STUD REGIS	STUDENT SEM HRS	COURSE FTE
		No.	Avg Size				
Theatre.....	39	51	13	114	719	2,014	137
Lower Division.....	9	18	22	46	404	1,162	77
Upper Division.....	17	16	14	43	228	645	43
Graduate Level.....	13	17	3	25	87	207	17
Languages, Ling and Lit.....	324	640	16	2,123	10,371	34,164	2,316
Lower Division.....	97	393	18	1,375	7,045	24,308	1,623
Upper Division.....	136	173	15	527	2,572	7,802	520
Graduate Level.....	91	74	8	221	754	2,054	173
East Asian Lang & Lit.....	78	151	13	550	2,071	7,381	499
Lower Division.....	17	90	15	351	1,363	5,217	348
Upper Division.....	33	39	14	125	543	1,722	114
Graduate Level.....	28	22	6	74	165	442	37
Chinese Lang & Lit.....	19	26	11	95	281	1,061	72
Lower Division.....	4	10	14	44	143	616	41
Upper Division.....	7	9	11	30	102	337	22
Graduate Level.....	8	7	5	21	36	108	9
East Asian Lang & Lit.....	14	15	14	53	229	662	46
Lower Division.....	2	5	22	15	110	330	22
Upper Division.....	5	5	15	15	75	225	15
Graduate Level.....	7	5	5	23	44	107	9
Japanese Lang & Lit.....	33	99	14	365	1,433	5,226	352
Lower Division.....	7	71	15	276	1,057	4,059	271
Upper Division.....	16	20	15	65	309	989	66
Graduate Level.....	10	8	6	24	67	178	15
Korean Lang & Lit.....	12	11	11	37	128	432	29
Lower Division.....	4	4	13	16	53	212	14
Upper Division.....	5	5	11	15	57	171	11
Graduate Level.....	3	2	7	6	18	49	4
English.....	69	175	17	523	3,097	9,238	623
Lower Division.....	17	103	19	309	1,948	5,844	390
Upper Division.....	36	59	17	177	991	2,971	198
Graduate Level.....	16	13	9	37	158	423	35
English as a Second Lang.....	28	39	14	115	575	1,677	121
Lower Division.....	7	18	15	54	275	825	55
Upper Division.....	6	5	19	15	97	291	19
Graduate Level.....	15	16	12	46	203	561	47
Eng as a Second Lang.....	22	24	13	70	330	942	72
Lower Division.....	1	3	10	9	30	90	6
Upper Division.....	6	5	19	15	97	291	19
Graduate Level.....	15	16	12	46	203	561	47
Eng Lang Institute.....	6	15	16	45	245	735	49
Lower Division.....	6	15	16	45	245	735	49
European Lang & Lit.....	71	136	15	445	2,072	6,949	469
Lower Division.....	28	92	17	318	1,530	5,329	355
Upper Division.....	28	33	13	99	455	1,363	91
Graduate Level.....	15	11	7	28	87	257	23
Dutch.....	1	1	2	0	2	2	0
Lower Division.....	1	1	2	0	2	2	0

TABLE 2 (cont.)

COURSE OFFERING	COURSES	CLASSES *		SEM HOURS	STUD REGIS	STUDENT SEM HRS	COURSE FTE
		No.	Avg Size				
European Language.....	14	12	15	31	206	614	43
Lower Division.....	3	2	17	6	34	102	7
Upper Division.....	7	7	18	21	149	445	30
Graduate Level.....	4	3	6	4	23	67	6
French.....	16	32	15	112	490	1,702	115
Lower Division.....	5	21	17	79	347	1,275	85
Upper Division.....	7	8	14	24	110	330	22
Graduate Level.....	4	3	10	9	33	97	8
German.....	9	10	12	33	123	417	28
Lower Division.....	5	7	14	24	101	351	23
Upper Division.....	2	2	7	6	14	42	3
Graduate Level.....	2	1	7	3	8	24	2
Greek.....	4	3	11	9	33	99	7
Lower Division.....	2	2	15	6	30	90	6
Graduate Level.....	2	1	2	3	3	9	1
Italian.....	2	2	19	7	37	132	9
Lower Division.....	2	2	19	7	37	132	9
Latin.....	3	9	16	27	148	444	30
Lower Division.....	2	8	18	24	146	438	29
Graduate Level.....	1	1	2	3	2	6	1
Portuguese.....	1	1	6	3	6	18	1
Lower Division.....	1	1	6	3	6	18	1
Russian.....	4	5	5	18	26	97	6
Lower Division.....	2	3	6	12	19	76	5
Upper Division.....	2	2	4	6	7	21	1
Spanish.....	17	61	16	205	1,001	3,424	230
Lower Division.....	5	45	18	157	808	2,845	190
Upper Division.....	10	14	13	42	175	525	35
Graduate Level.....	2	2	9	6	18	54	5
Hawn & Indo-Pacific Lang & Lit 1/.....	53	106	16	391	1,685	6,360	427
Lower Division.....	27	76	18	301	1,349	5,353	359
Upper Division.....	26	30	11	90	336	1,007	68
Burmese.....	1	1	2	4	2	8	1
Lower Division.....	1	1	2	4	2	8	1
Cambodian.....	2	2	3	8	6	24	2
Lower Division.....	2	2	3	8	6	24	2
Hawaiian.....	13	56	18	210	1,029	3,887	260
Lower Division.....	4	42	19	168	801	3,204	214
Upper Division.....	9	14	16	42	228	683	46
Hindi.....	1	1	3	4	3	12	1
Lower Division.....	1	1	3	4	3	12	1
Ilokano.....	4	8	22	30	174	683	46
Lower Division.....	2	6	27	24	161	644	43
Upper Division.....	2	2	7	6	13	39	3

TABLE 2 (cont.)

COURSE OFFERING	COURSES	CLASSES *		SEM HOURS	STUD REGIS	STUDENT SEM HRS	COURSE FTE
		No.	Avg Size				
Indo-Pacific Lang.....	7	5	16	16	91	296	20
Lower Division.....	3	2	26	7	57	194	13
Upper Division.....	4	3	10	9	34	102	7
Indonesian.....	4	4	8	14	30	109	7
Lower Division.....	2	2	10	8	19	76	5
Upper Division.....	2	2	6	6	11	33	2
Samoan.....	4	8	17	30	137	528	35
Lower Division.....	2	6	20	24	117	468	31
Upper Division.....	2	2	10	6	20	60	4
Sanskrit.....	2	2	5	6	9	27	2
Lower Division.....	2	2	5	6	9	27	2
Tagalog.....	5	9	15	33	138	538	36
Lower Division.....	2	6	21	24	124	496	33
Upper Division.....	3	3	5	9	14	42	3
Tahitian.....	3	3	4	11	13	50	3
Lower Division.....	2	2	6	8	11	44	3
Upper Division.....	1	1	2	3	2	6	0
Thai.....	3	3	8	11	23	83	6
Lower Division.....	2	2	7	8	14	56	4
Upper Division.....	1	1	9	3	9	27	2
Vietnamese.....	4	4	8	14	30	115	8
Lower Division.....	2	2	13	8	25	100	7
Upper Division.....	2	2	3	6	5	15	1
Interpretation & Translation.....	2	1	11	3	12	34	2
Upper Division.....	2	1	11	3	12	34	2
Linguistics.....	21	32	26	96	856	2,517	174
Lower Division.....	1	14	41	42	580	1,740	116
Upper Division.....	5	6	23	18	138	414	28
Graduate Level.....	15	12	9	36	138	363	30
Second Lang Acquisition	2	0	0	0	3	8	1
Graduate Level	2	0	0	0	3	8	1
Natural Sciences.....	213	388	32	750	12,593	30,585	2,067
Lower Division.....	62	238	42	423	10,021	23,831	1,588
Upper Division.....	83	88	21	223	1,952	5,110	341
Graduate Level.....	68	62	6	104	620	1,644	138
Biology Program.....	14	49	42	65	2,090	4,487	299
Lower Division.....	7	40	44	48	1,742	3,724	248
Upper Division.....	7	9	36	17	348	763	51
Botany/Botanical Sci.....	16	16	19	32	334	993	69
Lower Division.....	2	3	50	9	151	453	30
Upper Division.....	7	6	21	17	131	392	26
Graduate Level.....	7	7	3	6	52	148	13
Botany.....	14	16	19	32	326	984	68
Lower Division.....	2	3	50	9	151	453	30
Upper Division.....	7	6	21	17	131	392	26
Graduate Level.....	5	7	3	6	44	139	12

TABLE 2 (cont.)

COURSE OFFERING	COURSES	CLASSES *		SEM HOURS	STUD REGIS	STUDENT SEM HRS	COURSE FTE
		No.	Avg Size				
Botanical Science.....	2	0	0	0	8	9	1
Graduate Level.....	2	0	0	0	8	9	1
Chemistry.....	29	64	37	99	2,445	5,477	370
Lower Division.....	14	52	43	70	2,233	4,900	327
Upper Division.....	6	6	19	15	127	316	21
Graduate Level.....	9	6	8	14	85	261	22
Information & Comp Sci.....	29	59	39	120	2,323	5,286	355
Lower Division.....	8	40	47	64	1,870	3,986	266
Upper Division.....	15	13	28	40	399	1,131	75
Graduate Level.....	6	6	8	16	54	169	14
Mathematics.....	32	68	30	200	2,041	6,058	405
Lower Division.....	10	45	39	133	1,737	5,162	344
Upper Division.....	13	16	17	48	265	795	53
Graduate Level.....	9	7	4	19	39	101	8
Microbiology.....	20	25	21	44	564	1,466	101
Lower Division.....	2	6	37	13	223	599	40
Upper Division.....	10	10	27	23	267	688	46
Graduate Level.....	8	9	5	8	74	179	15
Physics & Astronomy.....	40	67	29	125	1,974	4,877	330
Lower Division.....	17	46	39	78	1,792	4,378	291
Upper Division.....	7	7	9	20	66	189	13
Graduate Level.....	16	14	5	27	116	310	26
Astronomy.....	9	10	51	24	548	1,596	108
Lower Division.....	3	6	82	18	492	1,476	98
Graduate Level.....	6	4	6	6	56	120	10
Physics.....	31	57	25	101	1,426	3,281	222
Lower Division.....	14	40	33	60	1,300	2,902	193
Upper Division.....	7	7	9	20	66	189	13
Graduate Level.....	10	10	4	21	60	190	16
Zoology.....	33	40	18	65	822	1,941	138
Lower Division.....	2	6	46	8	273	629	42
Upper Division.....	18	21	16	43	349	836	56
Graduate Level.....	13	13	9	14	200	476	40
Social Sciences.....	322	384	27	1,077	10,758	31,603	2,169
Lower Division.....	38	86	54	242	4,605	13,589	907
Upper Division.....	154	174	26	485	4,750	14,334	954
Graduate Level.....	130	124	8	350	1,403	3,680	308
Anthropology.....	26	29	23	81	730	2,087	143
Lower Division.....	5	12	37	32	439	1,293	86
Upper Division.....	11	10	17	30	177	531	35
Graduate Level.....	10	7	8	19	114	263	22
Communication.....	28	27	30	72	843	2,506	173
Lower Division.....	1	1	104	3	104	312	21
Upper Division.....	18	18	34	51	618	1,848	123
Graduate Level.....	9	8	13	18	121	346	29

TABLE 2 (cont.)

COURSE OFFERING	COURSES	CLASSES *		SEM HOURS	STUD REGIS	STUDENT SEM HRS	COURSE FTE
		No.	Avg Size				
Economics.....	29	32	41	94	1,337	3,957	269
Lower Division.....	3	6	141	18	845	2,535	169
Upper Division.....	13	15	25	45	370	1,110	74
Graduate Level.....	13	11	8	31	122	312	26
Ethnic Studies.....	16	25	29	54	731	2,217	148
Lower Division.....	2	6	55	18	329	987	66
Upper Division.....	14	19	20	36	402	1,230	82
Geography.....	34	39	28	100	1,143	3,139	215
Lower Division.....	4	13	39	27	510	1,328	89
Upper Division.....	19	18	28	51	498	1,492	99
Graduate Level.....	11	8	10	22	135	319	27
Journalism.....	13	21	20	63	426	1,278	85
Lower Division.....	3	9	28	27	252	756	50
Upper Division.....	10	12	14	36	174	522	35
Political Science.....	51	64	16	194	1,120	3,285	231
Lower Division.....	7	18	17	54	298	894	60
Upper Division.....	21	25	21	79	540	1,670	111
Graduate Level.....	23	21	9	61	282	721	60
Population Studies.....	3	2	9	4	18	44	3
Upper Division.....	1	1	12	3	12	36	2
Graduate Level.....	2	1	5	1	6	8	1
Psychology.....	48	70	29	194	2,209	6,602	452
Lower Division.....	8	10	129	30	1,294	3,882	259
Upper Division.....	14	24	23	60	653	2,001	133
Graduate Level.....	26	36	5	104	262	719	60
Public Administration.....	6	8	9	26	74	245	20
Graduate Level.....	6	8	9	26	74	245	20
Social Science.....	2	5	5	15	27	81	6
Lower Division.....	1	4	6	12	24	72	5
Graduate Level.....	1	1	3	3	3	9	1
Sociology.....	42	40	39	116	1,598	4,704	320
Lower Division.....	3	5	89	15	443	1,329	89
Upper Division.....	25	24	42	70	1,017	3,029	202
Graduate Level.....	14	11	8	31	138	346	29
Urban & Regional Plan.....	15	13	12	37	158	425	35
Upper Division.....	1	1	13	3	13	39	3
Graduate Level.....	14	12	11	34	145	386	32
Women's Studies.....	9	9	38	27	344	1,033	69
Lower Division.....	1	2	34	6	67	201	13
Upper Division.....	7	7	39	21	276	826	55
Graduate Level.....	1	0	0	0	1	6	1
Other Arts & Sciences.....	23	20	13	48	281	722	49
Lower Division.....	2	3	18	9	53	159	10
Upper Division.....	15	14	13	35	179	478	32
Graduate Level.....	6	3	13	4	49	85	7
College of Arts & Sciences (CAS).....	8	8	11	24	88	264	17
Lower Division.....	1	2	26	6	52	156	10
Upper Division.....	7	6	6	18	36	108	7

TABLE 2 (cont.)

COURSE OFFERING	COURSES	CLASSES *		SEM HOURS	STUD REGIS	STUDENT SEM HRS	COURSE FTE
		No.	Avg Size				
Communication & Info Sci.....	5	2	18	4	47	81	7
Graduate Level.....	5	2	18	4	47	81	7
Honors & Sel Studies.....	4	4	24	10	95	248	17
Upper Division.....	4	4	24	10	95	248	17
Interdisc Studies.....	6	6	9	10	51	129	8
Lower Division.....	1	1	1	3	1	3	0
Upper Division.....	4	4	12	7	48	122	8
Graduate Level.....	1	1	2	0	2	4	0
SCH HAWN, ASIAN & PAC STUDIES....	32	33	18	92	624	1,835	129
Lower Division.....	4	7	30	21	211	633	43
Upper Division.....	16	15	20	40	309	917	62
Graduate Level.....	12	11	7	31	104	285	24
Asian Studies Prog.....	16	16	15	45	248	752	54
Lower Division.....	1	1	23	3	23	69	5
Upper Division.....	8	7	23	18	161	493	33
Graduate Level.....	7	8	6	24	64	190	16
Hawaiian Studies.....	9	12	25	34	303	889	60
Lower Division.....	3	6	31	18	188	564	38
Upper Division.....	6	6	19	16	115	325	22
Pacific Island Stud.....	7	5	13	13	73	194	15
Upper Division.....	2	2	16	6	33	99	7
Graduate Level.....	5	3	10	7	40	95	8
SCH OF OCEAN & EARTH SCI TECH...	79	79	13	197	1,219	3,554	254
Lower Division.....	10	25	29	55	723	1,893	126
Upper Division.....	20	18	11	62	209	644	42
Graduate Level.....	49	36	4	80	287	1,017	86
Geology-Geophysics.....	31	37	11	98	473	1,380	98
Lower Division.....	7	18	17	40	309	769	51
Upper Division.....	11	9	8	38	76	245	16
Graduate Level.....	13	10	3	20	88	366	31
Meteorology.....	12	12	17	28	237	614	45
Lower Division.....	2	5	32	9	158	356	24
Upper Division.....	3	3	9	9	28	84	6
Graduate Level.....	7	4	6	10	51	174	15
Ocean/Earth Sci & Tech	4	3	6	5	19	52	4
Upper Division.....	1	1	2	0	2	6	0
Graduate Level.....	3	2	8	5	17	46	4
Ocean Engineering.....	11	8	3	17	41	103	8
Upper Division.....	1	1	6	3	6	18	1
Graduate Level.....	10	7	2	14	35	85	7
Oceanography.....	21	19	21	49	449	1,405	99
Lower Division.....	1	2	128	6	256	768	51
Upper Division.....	4	4	24	12	97	291	19
Graduate Level.....	16	13	3	31	96	346	29
SCHOOL OF ARCHITECTURE.....	28	40	23	120	953	2,849	193
Lower Division.....	7	14	29	45	404	1,258	84
Upper Division.....	12	18	25	51	489	1,419	95
Graduate Level.....	9	8	7	24	60	172	14

TABLE 2 (cont.)

COURSE OFFERING	COURSES	CLASSES *		SEM HOURS	STUD REGIS	STUDENT SEM HRS	COURSE FTE
		No.	Avg Size				
COLLEGE OF BUSINESS ADMIN.....	74	137	30	428	4,159	12,970	898
Lower Division.....	4	14	52	40	723	2,151	144
Upper Division.....	51	99	30	297	2,966	8,894	592
Graduate Level.....	19	24	19	91	470	1,925	162
Accounting.....	15	31	34	93	1,052	3,156	211
Lower Division.....	2	9	54	27	485	1,455	97
Upper Division.....	10	19	29	57	551	1,653	110
Graduate Level.....	3	3	5	9	16	48	4
Business (General).....	19	58	31	193	1,822	5,981	421
Upper Division.....	11	46	34	138	1,546	4,638	309
Graduate Level.....	8	12	23	55	276	1,343	112
Decision Sciences.....	7	6	26	18	155	465	31
Upper Division.....	6	5	28	15	142	426	28
Graduate Level.....	1	1	13	3	13	39	3
Financial Econ & Institution.....	13	18	32	54	574	1,722	121
Lower Division.....	1	4	57	12	229	687	46
Upper Division.....	8	10	25	30	254	762	51
Graduate Level.....	4	4	23	12	91	273	24
Business Economics.....	1	1	13	3	13	39	3
Upper Division.....	1	1	13	3	13	39	3
Business Law.....	2	5	52	15	259	777	54
Lower Division.....	1	4	57	12	229	687	46
Graduate Level.....	1	1	30	3	30	90	8
Finance.....	9	11	26	33	287	861	60
Upper Division.....	7	9	27	27	241	723	48
Graduate Level.....	2	2	23	6	46	138	12
Real Estate.....	1	1	15	3	15	45	4
Graduate Level.....	1	1	15	3	15	45	4
Management & Ind Rel.....	11	12	23	34	278	816	58
Lower Division.....	1	1	9	1	9	9	1
Upper Division.....	8	8	26	24	205	615	41
Graduate Level.....	2	3	21	9	64	192	16
Human Resources Mgmt.....	4	4	21	10	84	234	16
Lower Division.....	1	1	9	1	9	9	1
Upper Division.....	3	3	25	9	75	225	15
Industrial Relations.....	1	1	37	3	37	111	7
Upper Division.....	1	1	37	3	37	111	7
Management.....	6	7	22	21	157	471	35
Upper Division.....	4	4	23	12	93	279	19
Graduate Level.....	2	3	21	9	64	192	16
Marketing.....	9	12	23	36	278	830	56
Upper Division.....	8	11	24	33	268	800	53
Graduate Level.....	1	1	10	3	10	30	3

TABLE 2 (cont.)

COURSE OFFERING	COURSES	CLASSES *		SEM HOURS	STUD REGIS	STUDENT SEM HRS	COURSE FTE
		No.	Avg Size				
SCH OF TRAVEL INDUSTRY MGT.....	30	31	27	79	840	2,144	144
Lower Division.....	4	4	65	8	258	542	36
Upper Division.....	21	23	24	61	558	1,536	102
Graduate Level.....	5	4	6	10	24	66	6
Travel Industry Management.....	26	27	28	67	758	1,898	128
Lower Division.....	4	4	65	8	258	542	36
Upper Division.....	17	19	25	49	476	1,290	86
Graduate Level.....	5	4	6	10	24	66	6
Transportation.....	4	4	21	12	82	246	16
Upper Division.....	4	4	21	12	82	246	16
COLLEGE OF EDUCATION.....	199	290	15	973	4,613	13,995	1,001
Lower Division.....	25	27	27	42	735	1,253	84
Upper Division.....	78	164	15	629	2,493	8,624	574
Graduate Level.....	96	99	12	302	1,385	4,118	343
Counseling & Guidance.....	15	15	9	58	134	476	40
Graduate Level.....	15	15	9	58	134	476	40
Curriculum & Instruction.....	40	67	18	192	1,300	3,725	263
Upper Division.....	24	52	18	153	954	2,841	189
Graduate Level.....	16	15	18	39	346	884	74
Curriculum & Instruction.....	36	65	18	190	1,267	3,684	259
Upper Division.....	24	52	18	153	954	2,841	189
Graduate Level.....	12	13	19	37	313	843	70
Elementary Education.....	2	1	16	1	17	19	2
Graduate Level.....	2	1	16	1	17	19	2
Secondary Education.....	2	1	12	1	16	22	2
Graduate Level.....	2	1	12	1	16	22	2
Education, Interdisciplinary.....	14	21	8	71	237	937	72
Upper Division.....	7	7	15	22	103	334	22
Graduate Level.....	7	14	8	49	134	603	50
Educational Administration.....	16	19	12	49	294	786	63
Upper Division.....	1	3	17	9	50	150	10
Graduate Level.....	15	16	12	40	244	636	53
Educational Technology.....	10	11	12	31	140	414	31
Upper Division.....	2	4	17	12	66	198	13
Graduate Level.....	8	7	10	19	74	216	18
Educ Foundations.....	10	12	18	36	240	696	50
Upper Division.....	3	7	21	21	147	441	29
Graduate Level.....	7	5	13	15	93	255	21
Educ Psychology.....	19	23	16	62	402	1,161	86
Lower Division.....	1	1	19	2	19	38	3
Upper Division.....	5	10	22	30	218	655	44
Graduate Level.....	13	12	12	30	165	468	39
Field Services.....	8	47	9	282	446	2,634	176
Upper Division.....	8	47	9	282	446	2,634	176

TABLE 2 (cont.)

COURSE OFFERING	COURSES	CLASSES *		SEM HOURS	STUD REGIS	STUDENT SEM HRS	COURSE FTE
		No.	Avg Size				
Health, Phys Ed & Rec.....	48	54	20	122	1,100	2,205	148
Lower Division.....	24	26	28	40	716	1,215	81
Upper Division.....	20	25	14	73	358	918	61
Graduate Level.....	4	3	7	9	26	72	6
Special Education.....	19	21	14	70	320	961	72
Upper Division.....	8	9	17	27	151	453	30
Graduate Level.....	11	12	12	43	169	508	42
COLLEGE OF ENGINEERING.....	115	126	16	318	2,068	5,808	403
Lower Division.....	12	18	22	49	399	1,136	76
Upper Division.....	70	80	17	194	1,357	3,833	256
Graduate Level.....	33	28	7	75	312	839	71
Civil Engineering.....	40	44	20	117	920	2,522	175
Lower Division.....	5	8	19	15	150	298	20
Upper Division.....	22	22	28	64	620	1,845	123
Graduate Level.....	13	14	8	38	150	379	32
Electrical Engineering.....	45	54	12	124	721	2,111	146
Lower Division.....	6	9	25	31	226	769	51
Upper Division.....	27	36	11	69	387	1,034	69
Graduate Level.....	12	9	6	24	108	308	26
Interdisciplinary Engineering.....	2	2	24	4	47	89	6
Upper Division.....	2	2	24	4	47	89	6
Mechanical Engineering.....	28	26	14	73	380	1,086	76
Lower Division.....	1	1	23	3	23	69	5
Upper Division.....	19	20	15	57	303	865	58
Graduate Level.....	8	5	8	13	54	152	13
COLLEGE OF TROP AG & HUM RES....	124	127	25	340	3,390	9,725	660
Lower Division.....	14	29	50	83	1,436	4,256	284
Upper Division.....	64	74	22	209	1,662	4,790	320
Graduate Level.....	46	24	7	48	292	679	56
Agric & Resource Econ.....	8	7	41	19	308	891	61
Lower Division.....	1	2	91	6	182	546	36
Upper Division.....	2	3	31	9	93	279	19
Graduate Level.....	5	2	5	4	33	66	6
Agronomy & Soil Science.....	11	9	10	22	113	304	23
Upper Division.....	2	2	15	7	29	107	7
Graduate Level.....	9	7	9	15	84	197	16
Agronomy & Soil Sci.....	7	5	9	7	70	141	12
Graduate Level.....	7	5	9	7	70	141	12
Agronomy.....	1	1	7	4	7	28	2
Graduate Level.....	1	1	7	4	7	28	2
Soil Science.....	3	3	12	11	36	135	9
Upper Division.....	2	2	15	7	29	107	7
Graduate Level.....	1	1	7	4	7	28	2
Animal Science.....	10	7	13	18	95	258	18
Lower Division.....	1	1	21	3	21	63	4
Upper Division.....	5	4	13	11	53	146	10
Graduate Level.....	4	2	9	4	21	49	4

TABLE 2 (cont.)

COURSE OFFERING	COURSES	CLASSES *		SEM HOURS	STUD REGIS	STUDENT SEM HRS	COURSE FTE
		No.	Avg Size				
Biosystems Engineering 2/.....	8	6	9	12	64	151	11
Upper Division.....	3	3	11	7	34	80	5
Graduate Level.....	5	3	6	5	30	71	6
Entomology.....	6	3	7	8	34	111	8
Lower Division.....	1	1	12	4	12	48	3
Graduate Level.....	5	2	5	4	22	63	5
Environmental Biochemistry.....	4	2	55	5	116	314	21
Upper Division.....	3	2	55	5	111	297	20
Graduate Level.....	1	0	0	0	5	17	1
Food Sci & Hum Nutrition.....	16	20	35	51	725	2,051	138
Lower Division.....	4	11	48	28	530	1,526	102
Upper Division.....	8	7	23	21	165	469	31
Graduate Level.....	4	2	9	2	30	56	5
Horticulture.....	9	5	13	13	80	212	15
Lower Division.....	1	1	29	3	29	87	6
Upper Division.....	4	3	11	7	36	87	6
Graduate Level.....	4	1	3	3	15	38	3
Plant Molecular Physiology.....	4	3	9	7	36	94	8
Graduate Level.....	4	3	9	7	36	94	8
Plant Pathology.....	5	3	7	8	30	87	6
Upper Division.....	1	1	15	4	15	60	4
Graduate Level.....	4	2	4	4	15	27	2
Human Resources	43	62	29	177	1,789	5,252	351
Lower Division.....	6	13	51	39	662	1,986	133
Upper Division.....	36	49	23	138	1,126	3,265	218
Graduate Level.....	1	0	0	0	1	1	0
Family Resources.....	24	44	34	128	1,498	4,403	294
Lower Division.....	1	8	70	24	558	1,674	112
Upper Division.....	22	36	26	104	939	2,728	182
Graduate Level.....	1	0	0	0	1	1	0
Textiles & Clothing.....	19	18	16	49	291	849	57
Lower Division.....	5	5	21	15	104	312	21
Upper Division.....	14	13	14	34	187	537	36
SCHOOL OF MEDICINE.....	124	166	15	323	2,553	10,375	817
Lower Division.....	8	11	45	23	493	1,187	78
Upper Division.....	23	20	26	50	537	1,619	108
Graduate Level.....	93	135	11	250	1,523	7,569	631
Allied Medical Sci.....	24	31	11	78	334	858	62
Lower Division.....	2	2	20	4	40	80	5
Upper Division.....	12	13	15	32	192	500	34
Graduate Level.....	10	16	6	42	102	278	23
Medical Technology.....	8	8	18	18	141	315	21
Lower Division.....	2	2	20	4	40	80	5
Upper Division.....	6	6	17	14	101	235	16
Speech Path & Audiology.....	16	23	8	60	193	543	41
Upper Division.....	6	7	13	18	91	265	18
Graduate Level.....	10	16	6	42	102	278	23

TABLE 2 (cont.)

COURSE OFFERING	COURSES	CLASSES *		SEM HOURS	STUD REGIS	STUDENT SEM HRS	COURSE FTE
		No.	Avg Size				
Anatomy & Repro Biol.....	11	6	17	8	127	153	11
Upper Division.....	3	2	35	2	77	88	5
Graduate Level.....	8	4	8	6	50	65	6
Anatomy.....	8	5	20	7	122	137	10
Upper Division.....	2	2	35	2	75	82	5
Graduate Level.....	6	3	10	5	47	55	5
Reproductive Biology.....	3	1	2	1	5	16	1
Upper Division.....	1	0	0	0	2	6	0
Graduate Level.....	2	1	2	1	3	10	1
Biochemistry & Biophysics.....	15	10	13	17	146	459	31
Lower Division.....	1	1	37	3	37	111	7
Upper Division.....	3	2	37	5	76	287	19
Graduate Level.....	11	7	3	9	33	61	5
Biochemistry.....	12	9	14	14	138	434	29
Lower Division.....	1	1	37	3	37	111	7
Upper Division.....	3	2	37	5	76	287	19
Graduate Level.....	8	6	3	6	25	36	3
Biophysics.....	3	1	6	3	8	25	2
Graduate Level.....	3	1	6	3	8	25	2
Biomedical Sciences.....	16	14	44	44	629	2,343	195
Upper Division.....	1	0	0	0	4	15	1
Graduate Level.....	15	14	44	44	625	2,328	194
Fam Prac & Comm Health.....	3	6	11	15	65	511	43
Graduate Level.....	3	6	11	15	65	511	43
Genetics & Molecular Biology.....	11	12	4	12	73	196	16
Upper Division.....	2	1	20	3	23	69	5
Graduate Level.....	9	11	3	9	50	127	11
Medicine.....	5	21	8	39	166	1,717	143
Graduate Level.....	5	21	8	39	166	1,717	143
Obstetrics & Gynecology.....	3	9	6	15	54	416	35
Graduate Level.....	3	9	6	15	54	416	35
Pathology.....	1	2	8	0	15	62	5
Graduate Level.....	1	2	8	0	15	62	5
Pediatrics.....	4	11	6	15	64	493	41
Graduate Level.....	4	11	6	15	64	493	41
Pharmacology.....	7	5	15	7	79	203	14
Lower Division.....	1	1	57	3	57	171	11
Graduate Level.....	6	4	5	4	22	32	3
Physiology.....	12	14	39	31	563	1,609	109
Lower Division.....	4	7	51	13	359	825	55
Upper Division.....	2	2	83	8	165	660	44
Graduate Level.....	6	5	5	10	39	124	10
Psychiatry.....	3	7	7	15	49	387	32
Graduate Level.....	3	7	7	15	49	387	32

TABLE 2 (cont.)

COURSE OFFERING	COURSES	CLASSES *		SEM HOURS	STUD REGIS	STUDENT SEM HRS	COURSE FTE
		No.	Avg Size				
Surgery.....	4	15	10	21	152	855	71
Graduate Level.....	4	15	10	21	152	855	71
Trop Med & Med Micro.....	5	3	10	6	37	113	9
Graduate Level.....	5	3	10	6	37	113	9
SCHOOL OF NURSING.....	46	59	14	234	870	3,122	218
Lower Division.....	3	6	9	22	54	180	12
Upper Division.....	29	39	16	153	644	2,368	158
Graduate Level.....	14	14	10	59	172	574	48
Dental Hygiene.....	9	13	12	40	156	468	31
Lower Division.....	3	6	9	22	54	180	12
Upper Division.....	6	7	15	18	102	288	19
Nursing.....	37	46	15	194	714	2,654	187
Upper Division.....	23	32	17	135	542	2,080	139
Graduate Level.....	14	14	10	59	172	574	48
SCHOOL OF PUBLIC HEALTH.....	58	61	12	161	783	1,940	162
Graduate Level.....	58	61	12	161	783	1,940	162
SCHOOL OF SOCIAL WORK.....	31	51	19	125	977	3,004	238
Lower Division.....	1	1	30	3	30	90	6
Upper Division.....	7	8	24	25	195	618	41
Graduate Level.....	23	42	18	97	752	2,296	191
SCHOOL OF LAW.....	44	51	23	139	1,197	3,453	288
Graduate Level.....	44	51	23	139	1,197	3,453	288
GRAD SCH OF LIB & INFO STUDIES....	16	15	13	42	209	606	51
Graduate Level.....	16	15	13	42	209	606	51
MILITARY STUDIES.....	11	24	5	57	114	252	17
Lower Division.....	6	14	5	27	74	133	9
Upper Division.....	5	10	4	30	40	119	8
Aerospace Studies.....	4	8	6	18	46	90	6
Lower Division.....	2	4	8	6	32	48	3
Upper Division.....	2	4	4	12	14	42	3
Military Science.....	7	16	4	39	68	162	11
Lower Division.....	4	10	4	21	42	85	6
Upper Division.....	3	6	4	18	26	77	5

* Excludes 99 (Individual Instruction), 700 (Thesis Research), and 800 (Dissertation Research) courses.

1/ Formerly called Indo-Pacific Languages.

2/ Formerly called Agricultural Engineering.

SOURCE: Computer Report 3011: "Course Registration Summary Report;" and
Computer Report 3011C: "Number of Classes and Average Class Size."

TABLE 3
STUDENT SEMESTER HOURS (SSH) AND COURSE FTE
UNIVERSITY OF HAWAII AT MANOA
FALL 1992 TO FALL 1996

COLLEGE AND LEVEL	FALL 1992			FALL 1993			FALL 1994			FALL 1995			FALL 1996		
	SSH No.	%C	COURSE FTE	SSH No.	%C	COURSE FTE	SSH No.	%C	COURSE FTE	SSH No.	%C	COURSE FTE	SSH No.	%C	COURSE FTE
TOTAL.....	216,000	2	15,002	220,309	2	15,317	223,005	1	15,531	222,268	0	15,481	204,654	-8	14,234
Lower Division.....	101,608	0	6,774	104,783	3	6,987	105,114	0	7,012	105,567	0	7,039	96,739	-8	6,452
Upper Division.....	77,879	3	5,184	78,234	0	5,214	78,766	1	5,248	77,637	-1	5,175	72,997	-6	4,864
Graduate Level.....	36,513	3	3,044	37,292	2	3,116	39,125	5	3,271	39,064	0	3,267	34,918	-11	2,918
COLLEGE OF ARTS & SCIENCES.....	135,904	2	9,222	138,629	2	9,425	139,232	0	9,466	140,106	1	9,518	129,022	-8	8,761
Lower Division.....	86,547	2	5,770	88,434	2	5,898	88,576	0	5,910	90,044	2	6,003	82,027	-9	5,470
Upper Division.....	39,393	2	2,623	39,734	1	2,649	40,020	1	2,667	39,613	-1	2,640	37,616	-5	2,506
Graduate Level.....	9,964	1	829	10,461	5	878	10,636	2	889	10,449	-2	875	9,379	-10	785
Arts and Humanities.....	36,883	1	2,493	36,803	0	2,490	37,128	1	2,516	37,008	0	2,509	31,948	-14	2,160
Lower Division.....	24,189	0	1,611	23,381	-3	1,557	23,489	0	1,567	23,899	2	1,595	20,140	-16	1,342
Upper Division.....	10,585	3	706	11,218	6	747	11,214	0	747	10,756	-4	718	9,892	-8	659
Graduate Level.....	2,109	3	176	2,204	5	186	2,425	10	202	2,353	-3	196	1,916	-19	159
Lang, Ling and Lit.....	32,333	0	2,185	32,247	0	2,185	34,198	6	2,318	34,407	1	2,327	34,164	-1	2,316
Lower Division.....	21,992	-1	1,468	22,895	4	1,527	24,059	5	1,607	23,904	-1	1,591	24,308	2	1,623
Upper Division.....	8,450	6	560	7,392	-13	493	8,164	10	545	8,395	3	558	7,802	-7	520
Graduate Level.....	1,891	-8	157	1,960	4	165	1,975	1	166	2,108	7	178	2,054	-3	173
Natural Sciences.....	29,164	1	1,969	30,450	4	2,062	30,493	0	2,062	32,449	6	2,195	30,585	-6	2,067
Lower Division.....	23,048	3	1,535	24,067	4	1,605	24,288	1	1,619	25,759	6	1,718	23,831	-7	1,588
Upper Division.....	4,465	-6	297	4,600	3	308	4,425	-4	294	4,968	12	331	5,110	3	341
Graduate Level.....	1,651	-2	137	1,783	8	149	1,780	0	149	1,722	-3	146	1,644	-5	138
Social Sciences.....	36,850	4	2,529	37,845	3	2,599	36,665	-3	2,519	35,576	-3	2,441	31,603	-11	2,169
Lower Division.....	17,021	6	1,136	17,257	1	1,153	16,401	-5	1,094	16,242	-1	1,083	13,589	-16	907
Upper Division.....	15,594	1	1,040	16,211	4	1,080	15,902	-2	1,060	15,149	-5	1,010	14,334	-5	954
Graduate Level.....	4,235	6	353	4,377	3	366	4,362	0	365	4,185	-4	348	3,680	-12	308
Other Arts & Sciences.....	674	-12	46	1,284	91	89	748	-42	51	666	-11	46	722	8	49
Lower Division.....	297	-32	20	834	181	56	339	-59	23	240	-29	16	159	-34	10
Upper Division.....	299	24	20	313	5	21	315	1	21	345	10	23	478	39	32
Graduate Level.....	78	-12	6	137	76	12	94	-31	7	81	-14	7	85	5	7
SCH OF HAWN, ASIAN & PAC STUD.....	1,373	2	99	1,509	10	107	2,085	38	144	2,412	16	168	1,835	-24	129
Lower Division.....	333	-31	22	510	53	34	873	71	58	981	12	65	633	-35	43
Upper Division.....	548	15	36	703	28	48	884	26	59	1,030	17	69	917	-11	62
Graduate Level.....	492	28	41	296	-40	25	328	11	27	401	22	34	285	-29	24

TABLE 3 (cont.)

COLLEGE AND LEVEL	FALL 1992			FALL 1993			FALL 1994			FALL 1995			FALL 1996		
	SSH No.	%C	COURSE FTE	SSH No.	%C	COURSE FTE	SSH No.	%C	COURSE FTE	SSH No.	%C	COURSE FTE	SSH No.	%C	COURSE FTE
SCH OF OCEAN & EARTH SCI TECH.....	3,932	-2	280	4,247	8	302	4,306	1	310	4,597	7	328	3,554	-23	254
Lower Division.....	2,013	-7	134	2,451	22	163	2,400	-2	160	2,681	12	179	1,893	-29	126
Upper Division.....	750	26	49	620	-17	42	626	1	42	719	15	48	644	-10	42
Graduate Level.....	1,169	-5	97	1,176	1	97	1,280	9	108	1,197	-6	101	1,017	-15	86
SCHOOL OF ARCHITECTURE.....	2,111	-15	142	2,363	12	159	2,444	3	165	2,721	11	185	2,849	5	193
Lower Division.....	1,135	-11	76	1,357	20	90	1,468	8	98	1,414	-4	94	1,258	-11	84
Upper Division.....	916	-16	61	871	-5	58	874	0	58	1,118	28	75	1,419	27	95
Graduate Level.....	60	-49	5	135	125	11	102	-24	9	189	85	16	172	-9	14
COLLEGE OF BUSINESS ADMIN.....	16,544	-6	1,138	15,890	-4	1,093	14,933	-6	1,034	14,278	-4	992	12,970	-9	898
Lower Division.....	2,492	-19	167	2,548	2	169	2,160	-15	144	2,151	0	143	2,151	0	144
Upper Division.....	11,904	-5	792	11,434	-4	763	10,570	-8	704	9,801	-7	654	8,894	-9	592
Graduate Level.....	2,148	3	179	1,908	-11	161	2,203	15	186	2,326	6	195	1,925	-17	162
SCHOOL OF TRAVEL IND MGT.....	1,995	30	135	2,537	27	171	2,592	2	175	2,618	1	175	2,144	-18	144
Lower Division.....	702	1	47	715	2	48	630	-12	42	665	6	44	542	-18	36
Upper Division.....	1,217	48	82	1,714	41	114	1,812	6	120	1,876	4	125	1,536	-18	102
Graduate Level.....	76	217	6	108	42	9	150	39	13	77	-49	6	66	-14	6
COLLEGE OF EDUCATION.....	15,058	12	1,073	15,375	2	1,094	16,165	5	1,159	14,985	-7	1,078	13,995	-7	1,001
Lower Division.....	1,518	2	101	1,863	23	124	1,958	5	131	1,228	-37	82	1,253	2	84
Upper Division.....	9,385	19	625	9,295	-1	620	9,383	1	625	9,022	-4	601	8,624	-4	574
Graduate Level.....	4,155	2	347	4,217	1	350	4,824	14	403	4,735	-2	395	4,118	-13	343
COLLEGE OF ENGINEERING.....	7,057	1	485	7,400	5	510	7,474	1	518	6,889	-8	480	5,808	-16	403
Lower Division.....	1,877	8	125	1,644	-12	110	1,388	-16	93	1,248	-10	83	1,136	-9	76
Upper Division.....	4,286	-1	285	4,757	11	317	4,918	3	327	4,426	-10	295	3,833	-13	256
Graduate Level.....	894	-5	75	999	12	83	1,168	17	98	1,215	4	102	839	-31	71
COLLEGE OF TROP AG & HUM RES.....	8,294	6	568	8,569	3	587	9,490	11	649	9,220	-3	630	9,725	5	660
Lower Division.....	3,693	6	246	4,052	10	270	4,508	11	300	3,887	-14	260	4,256	9	284
Upper Division.....	3,749	7	250	3,556	-5	236	4,120	16	276	4,606	12	308	4,790	4	320
Graduate Level.....	852	-4	72	961	13	81	862	-10	73	727	-16	62	679	-7	56
HEALTH SCI & SOC WELFARE.....	10		1												
Graduate Level.....	10		1												
SCHOOL OF MEDICINE.....	9,906	6	780	10,017	1	788	10,052	0	791	10,174	1	801	10,375	2	817
Lower Division.....	879	-1	58	800	-9	54	753	-6	50	794	5	54	1,187	49	78
Upper Division.....	1,843	15	123	1,972	7	129	1,964	0	130	2,099	7	139	1,619	-23	108
Graduate Level.....	7,184	5	599	7,245	1	605	7,335	1	611	7,281	-1	608	7,569	4	631

TABLE 3 (cont.)

COLLEGE AND LEVEL	FALL 1992			FALL 1993			FALL 1994			FALL 1995			FALL 1996		
	SSH No.	%C	COURSE FTE	SSH No.	%C	COURSE FTE	SSH No.	%C	COURSE FTE	SSH No.	%C	COURSE FTE	SSH No.	%C	COURSE FTE
SCHOOL OF NURSING.....	4,166	-6	290	3,892	-7	273	3,857	-1	269	3,581	-7	250	3,122	-13	218
Lower Division.....	200	-67	13	220	10	15	230	5	15	220	-4	15	180	-18	12
Upper Division.....	3,226	5	215	2,932	-9	196	2,921	0	195	2,649	-9	176	2,368	-11	158
Graduate Level.....	740	-5	62	740	0	62	706	-5	59	712	1	59	574	-19	48
SCHOOL OF PUBLIC HEALTH.....	2,243	5	186	2,689	20	223	3,063	14	254	2,908	-5	242	1,940	-33	162
Upper Division.....	72	-11	5	51	-29	3	90	76	6	15	-83	1			
Graduate Level.....	2,171	5	181	2,638	22	220	2,973	13	248	2,893	-3	241	1,940	-33	162
SCHOOL OF SOCIAL WORK.....	2,635	8	210	2,435	-8	193	2,742	13	220	3,049	11	244	3,004	-1	238
Lower Division.....	105	21	7	81	-23	5	72	-11	5	102	42	7	90	-12	6
Upper Division.....	442	-15	29	454	3	30	464	2	31	517	11	34	618	20	41
Graduate Level.....	2,088	13	174	1,900	-9	158	2,206	16	184	2,430	10	203	2,296	-6	191
SCHOOL OF LAW.....	3,295	0	275	3,421	4	285	3,523	3	294	3,609	2	301	3,453	-4	288
Graduate Level.....	3,295	0	275	3,421	4	285	3,523	3	294	3,609	2	301	3,453	-4	288
GRAD SCH OF LIBRARY STUD.....	1,215	6	101	1,087	-11	91	829	-24	69	823	-1	69	606	-26	51
Graduate Level.....	1,215	6	101	1,087	-11	91	829	-24	69	823	-1	69	606	-26	51
MILITARY STUDIES.....	262	0	17	249	-5	16	218	-12	14	298	37	20	252	-15	17
Lower Division.....	114	-14	8	108	-5	7	98	-9	6	152	55	10	133	-13	9
Upper Division.....	148	14	9	141	-5	9	120	-15	8	146	22	10	119	-18	8

SOURCE: Computer Report 3011: "Course Registration Summary Report."

TABLE 4
NUMBER OF CLASSES AND AVERAGE CLASS SIZE *
UNIVERSITY OF HAWAI'I AT MANOA
FALL 1992 TO FALL 1996

COLLEGE AND LEVEL	FALL 1992			FALL 1993			FALL 1994			FALL 1995			FALL 1996		
	Classes No.	%C	Avg Size	Classes No.	%C	Avg Size	Classes No.	%C	Avg Size	Classes No.	%C	Avg Size	Classes No.	%C	Avg Size
TOTAL.....	3,430	0.1	21	3,454	0.7	21	3,579	3.6	21	3,383	-5.5	22	3,241	-4.2	21
Lower Division.....	1,229	-1.8	29	1,261	2.6	30	1,275	1.1	29	1,175	-7.8	32	1,104	-6.0	31
Upper Division.....	1,322	1.8	20	1,309	-1.0	20	1,327	1.4	20	1,234	-7.0	21	1,227	-0.6	20
Graduate Level.....	879	0.5	11	884	0.6	11	977	10.5	11	974	-0.3	11	910	-6.6	10
COLLEGE OF ARTS & SCIENCES	2,057	-2.1	22	2,097	1.9	23	2,110	0.6	23	2,011	-4.7	24	1,951	-3.0	23
Lower Division.....	1,039	-2.0	29	1,070	3.0	29	1,083	1.2	29	1,006	-7.1	31	934	-7.2	31
Upper Division.....	690	-0.7	19	686	-0.6	20	672	-2.0	20	641	-4.6	21	659	2.8	20
Graduate Level.....	328	-5.5	8	341	4.0	8	355	4.1	8	364	2.5	8	358	-1.6	7
Arts and Humanities.....	593	0.2	22	603	1.7	21	552	-8.5	24	537	-2.7	24	519	-3.4	22
Lower Division.....	294	1.4	28	281	-4.4	29	243	-13.5	34	241	-0.8	34	214	-11.2	33
Upper Division.....	210	-2.3	19	224	6.7	19	209	-6.7	20	192	-8.1	22	210	9.4	18
Graduate Level.....	89	2.3	6	98	10.1	6	100	2.0	7	104	4.0	6	95	-8.7	5
Lang, Ling and Lit.....	650	-3.7	15	642	-1.2	15	660	2.8	16	646	-2.1	16	640	-0.9	16
Lower Division.....	384	-4.7	17	393	2.3	17	407	3.6	17	404	-0.7	17	393	-2.7	18
Upper Division.....	199	0.5	14	182	-8.5	13	185	1.6	14	175	-5.4	16	173	-1.1	15
Graduate Level.....	67	-9.5	8	67	0.0	9	68	1.5	8	67	-1.5	9	74	10.4	8
Natural Sciences.....	378	-3.1	29	411	8.7	29	410	-0.2	29	385	-6.1	33	388	0.8	32
Lower Division.....	238	-0.4	39	263	10.5	38	271	3.0	37	236	-12.9	45	238	0.8	42
Upper Division.....	87	-3.3	17	91	4.6	17	83	-8.8	18	90	8.4	20	88	-2.2	21
Graduate Level.....	53	-13.1	8	57	7.5	7	56	-1.8	7	59	5.4	7	62	5.1	6
Social Sciences.....	422	-1.6	28	421	-0.2	29	471	11.9	25	432	-8.3	27	384	-11.1	27
Lower Division.....	117	-1.7	50	122	4.3	48	156	27.9	36	123	-21.2	45	86	-30.1	54
Upper Division.....	189	1.1	27	183	-3.2	29	187	2.2	28	178	-4.8	28	174	-2.2	26
Graduate Level.....	116	-5.7	10	116	0.0	10	128	10.3	9	131	2.3	8	124	-5.3	8
Other Arts & Sciences.....	14	-12.5	18	20	42.9	22	17	-15.0	16	11	-35.3	22	20	81.8	13
Lower Division.....	6	-33.3	17	11	83.3	25	6	-45.5	19	2	-66.7	40	3	50.0	18
Upper Division.....	5	0.0	23	6	20.0	19	8	33.3	14	6	-25.0	21	14	133.3	13
Graduate Level.....	3	50.0	13	3	0.0	18	3	0.0	14	3	0.0	12	3	0.0	13
SCH HAWN, ASIAN & PAC STUDIES..	31	3.3	14	37	19.4	13	36	-2.7	19	35	-2.8	23	33	-5.7	18
Lower Division.....	3	-40.0	37	4	33.3	43	6	50.0	49	8	33.3	41	7	-12.5	30
Upper Division.....	11	-8.3	15	19	72.7	12	17	-10.5	18	15	-11.8	24	15	0.0	20
Graduate Level.....	17	30.8	9	14	-17.6	5	13	-7.1	7	12	-7.7	10	11	-8.3	7

TABLE 4 (cont.)

COLLEGE AND LEVEL	FALL 1992			FALL 1993			FALL 1994			FALL 1995			FALL 1996		
	Classes No.	%C	Avg Size	Classes No.	%C	Avg Size	Classes No.	%C	Avg Size	Classes No.	%C	Avg Size	Classes No.	%C	Avg Size
SCHOOL OF MEDICINE.....	113	3.7	20	125	10.6	18	164	31.2	15	158	-3.7	15	166	5.1	15
Lower Division.....	8	0.0	38	8	0.0	35	7	-12.5	37	6	-14.3	46	11	83.3	45
Upper Division.....	31	6.9	20	27	-12.9	25	28	3.7	24	25	-10.7	28	20	-20.0	26
Graduate Level.....	74	2.8	17	90	21.6	15	129	43.3	11	127	-1.6	11	135	6.3	11
SCHOOL OF NURSING.....	78	-8.2	17	71	-9.0	16	71	0.0	15	70	-1.4	14	59	-15.7	14
Lower Division.....	3	-57.1	20	3	0.0	22	3	0.0	23	6	100.0	11	6	0.0	9
Upper Division.....	61	0.0	18	55	-9.8	17	51	-7.3	17	45	-11.8	16	39	-13.3	16
Graduate Level.....	14	-17.6	11	13	-7.1	12	17	30.8	9	19	11.8	8	14	-26.3	10
SCHOOL OF PUBLIC HEALTH.....	75	15.4	11	66	-12.0	15	81	22.7	14	73	-9.9	15	61	-16.4	12
Upper Division.....	3	50.0	8	1	-66.7	17	2	100.0	15	1	-50.0	5			
Graduate Level.....	72	14.3	11	65	-9.7	15	79	21.5	14	72	-8.9	15	61	-15.3	12
SCHOOL OF SOCIAL WORK.....	51	15.9	17	45	-11.8	17	49	8.9	18	54	10.2	18	51	-5.6	19
Lower Division.....	1	0.0	35	1	0.0	27	1	0.0	24	1	0.0	34	1	0.0	30
Upper Division.....	7	16.7	20	8	14.3	18	7	-12.5	21	9	28.6	18	8	-11.1	24
Graduate Level.....	43	16.2	16	36	-16.3	17	41	13.9	17	44	7.3	18	42	-4.5	18
SCHOOL OF LAW.....	47	6.8	25	47	0.0	26	52	10.6	25	53	1.9	24	51	-3.8	23
Graduate Level.....	47	6.8	25	47	0.0	26	52	10.6	25	53	1.9	24	51	-3.8	23
GRAD SCH OF LIBRARY STUDIES.....	20	-13.0	20	20	0.0	18	18	-10.0	15	18	0.0	15	15	-16.7	13
Graduate Level.....	20	-13.0	20	20	0.0	18	18	-10.0	15	18	0.0	15	15	-16.7	13
MILITARY STUDIES.....	22	4.8	5	23	4.5	5	21	-8.7	5	22	4.8	6	24	9.1	5
Lower Division.....	15	7.1	5	15	0.0	4	14	-6.7	4	15	7.1	6	14	-6.7	5
Upper Division.....	7	0.0	7	8	14.3	6	7	-12.5	6	7	0.0	6	10	42.9	4

* Excludes 99 (Individual Instruction), 700 (Thesis Research) and 800 (Dissertation Research) courses.

SOURCE: Computer Report 3011C: "Number of Classes and Average Class Size."