

COURSE REGISTRATION REPORT
UNIVERSITY OF HAWAI'I AT MANOA
SPRING 2000

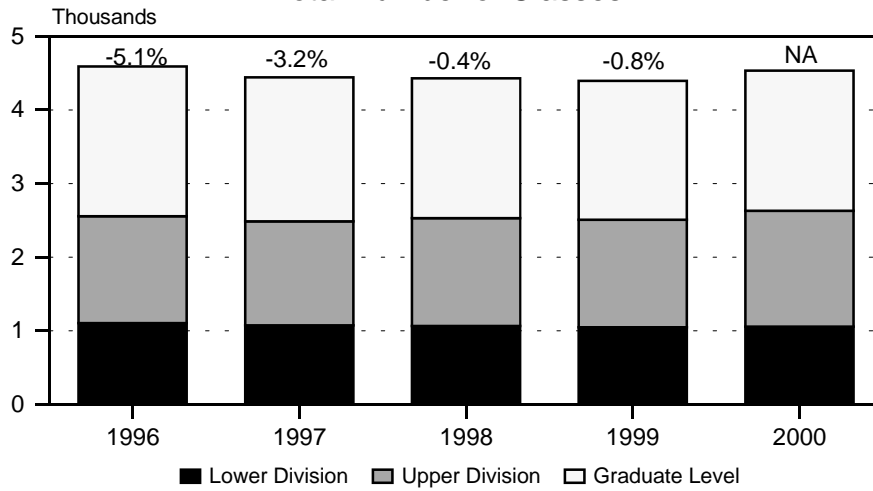
Institutional Research Office
University of Hawai'i
April 2000

File Reference: Management and Planning Support Folder, Courses

Reports available online at: <http://www.hawaii.edu/iro/maps.htm>

University of Hawai'i at Manoa - Spring Semesters *

Figure 1
Total Number of Classes



Includes classes numbered -99 (Individual Instr), 700 (Thesis Rsrch), and 800 (Dissertation Rsrch)

Figure 2
Student Registrations

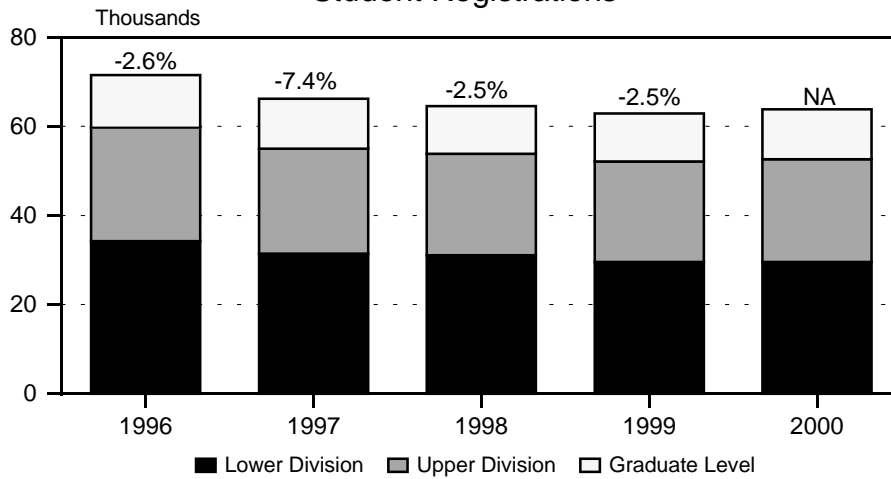
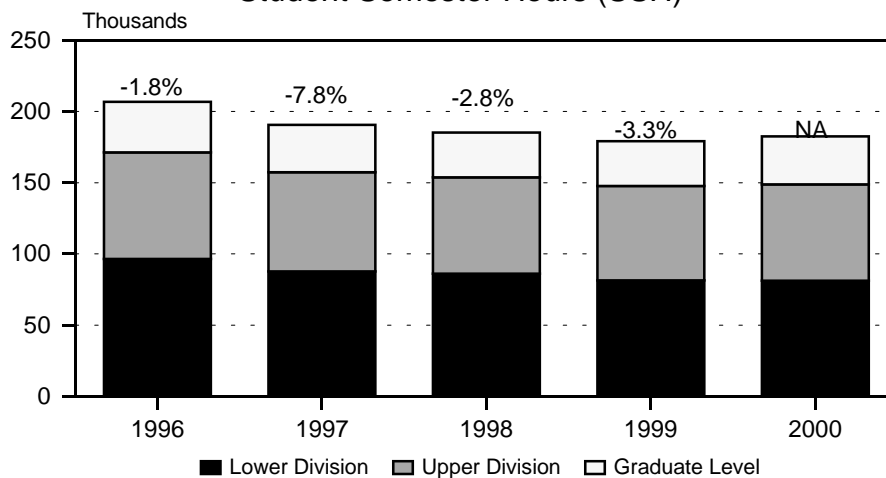


Figure 3
Student Semester Hours (SSH)



* Note: Spring 2000 data includes Outreach College spring term classes as of census (2/11/00).

Figure 4
Course FTE

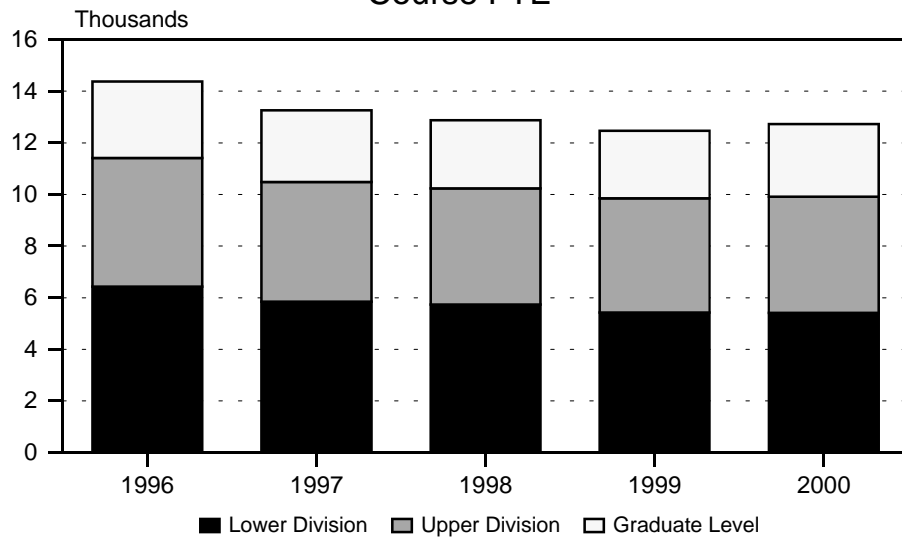
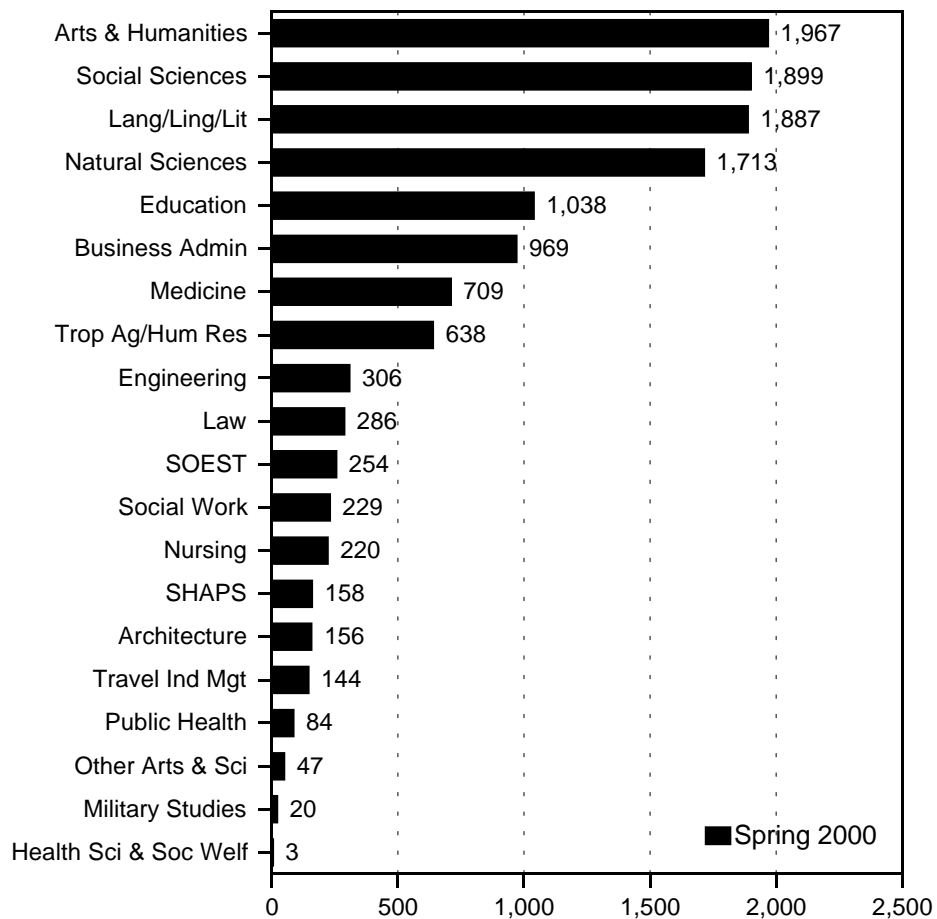


Figure 5
Course FTE, by College



* Note: Spring 2000 data includes Outreach College spring term classes as of census (2/11/00).

Figure 6
Average Class Size

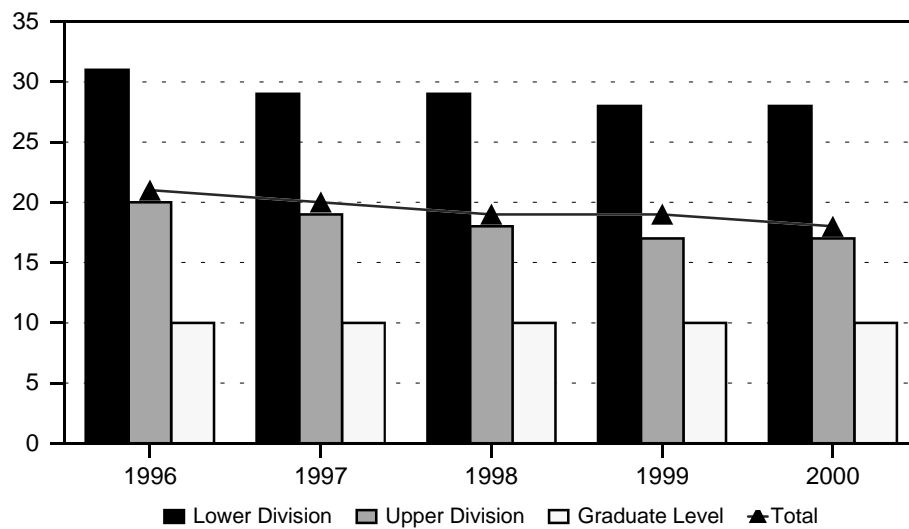
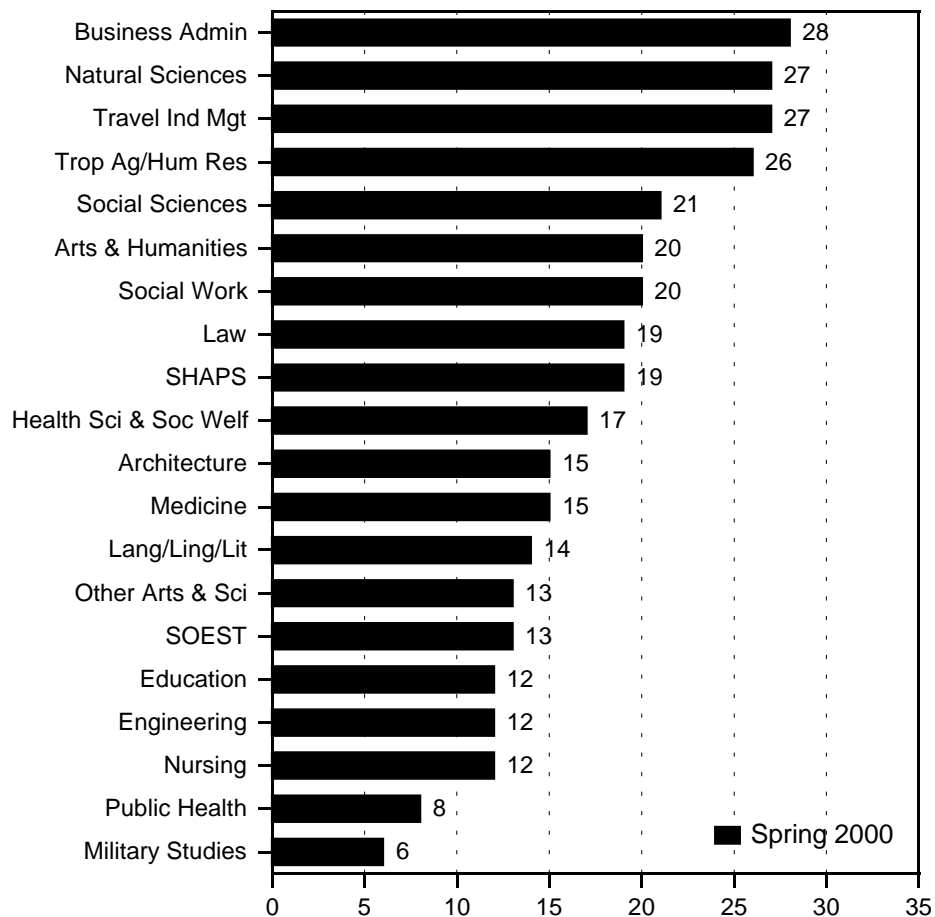


Figure 7
Average Class Size, by College



* Note: Spring 2000 data includes Outreach College spring term classes as of census (2/11/00).

TABLE 1
 COURSE REGISTRATION AND AVERAGE CLASS SIZE
 UNIVERSITY OF HAWAI'I AT MANOA
 SPRING 2000

COURSE OFFERING	COURSES	CLASSES 1/		SEMESTER HOURS	STUDENT REGIS	STUDENT SEM HRS	COURSE FTE
		No.	Avg Size				
TOTAL	2,380	3,363	18	9,153	63,808	182,497	12,727
Lower Division	408	1,053	28	2,721	29,551	81,202	5,410
Upper Division	1,041	1,357	17	3,975	23,039	67,492	4,499
Graduate Level	931	953	10	2,457	11,218	33,803	2,818
COLLEGE OF ARTS & SCIENCES.....	1,321	1,932	20	5,100	39,464	110,457	7,513
Lower Division	303	867	28	2,326	23,975	67,102	4,471
Upper Division	612	690	17	1,873	12,131	34,370	2,293
Graduate Level	406	375	7	901	3,358	8,985	749
Arts and Humanities	400	524	20	1,186	10,812	29,123	1,967
Lower Division	104	213	29	514	6,327	17,725	1,181
Upper Division	200	223	17	520	3,865	9,786	653
Graduate Level	96	88	5	152	620	1,612	133
American Studies	25	34	17	100	615	1,789	124
Lower Division	3	15	21	45	321	963	64
Upper Division	9	9	21	27	191	579	39
Graduate Level	13	10	6	28	103	247	21
Art	95	120	15	305	1,854	5,513	371
Lower Division	31	58	21	170	1,202	3,558	237
Upper Division	44	44	13	123	584	1,737	116
Graduate Level	20	18	2	12	68	218	18
Dance	33	36	10	65	350	877	59
Lower Division	7	9	16	27	147	441	29
Upper Division	19	20	9	33	180	373	25
Graduate Level	7	7	3	5	23	63	5
History	49	56	46	168	2,597	7,730	519
Lower Division	8	18	100	54	1,804	5,412	361
Upper Division	32	32	22	96	700	2,100	140
Graduate Level	9	6	8	18	93	218	18
Music	79	120	15	130	1,887	2,935	197
Lower Division	27	55	12	52	758	1,158	77
Upper Division	42	58	18	65	1,081	1,679	112
Graduate Level	10	7	3	13	48	98	8
Philosophy	28	30	21	93	640	1,885	129
Lower Division	6	10	36	30	356	1,068	71
Upper Division	13	13	15	42	198	597	40
Graduate Level	9	7	9	21	86	220	18
Religion	23	24	36	73	877	2,619	176
Lower Division	8	12	62	36	747	2,241	149
Upper Division	6	5	17	18	89	267	18
Graduate Level	9	7	4	19	41	111	9
Speech	26	43	28	132	1,205	3,625	245
Lower Division	6	19	31	57	583	1,749	117
Upper Division	14	20	28	63	559	1,682	112
Graduate Level	6	4	13	12	63	194	16

TABLE 1 (cont.)

COURSE OFFERING	COURSES	CLASSES 1/		SEMESTER HOURS	STUDENT REGIS	STUDENT SEM HRS	COURSE FTE
		No.	Avg Size				
Theatre	42	61	12	120	787	2,150	147
Lower Division	8	17	24	43	409	1,135	76
Upper Division	21	22	12	53	283	772	51
Graduate Level	13	22	3	24	95	243	20
Languages, Ling and Lit	340	597	14	1,954	8,581	27,870	1,887
Lower Division	92	331	17	1,155	5,526	18,852	1,255
Upper Division	157	186	13	573	2,378	7,190	479
Graduate Level	91	80	7	226	677	1,828	153
East Asian Lang & Lit	89	139	11	504	1,623	5,696	382
Lower Division	18	69	14	267	966	3,678	244
Upper Division	49	54	10	176	549	1,748	116
Graduate Level	22	16	5	61	108	270	22
Chinese Lang & Lit	26	28	9	104	282	1,008	68
Lower Division	5	10	11	43	112	470	31
Upper Division	16	14	10	49	149	479	32
Graduate Level	5	4	4	12	21	59	5
East Asian Lang & Lit	13	13	15	52	213	599	40
Lower Division	3	6	20	18	122	366	24
Upper Division	4	4	14	12	56	168	11
Graduate Level	6	3	4	22	35	65	5
Japanese Lang & Lit	40	89	11	316	1,021	3,703	249
Lower Division	6	48	14	186	667	2,582	172
Upper Division	24	32	9	103	303	978	65
Graduate Level	10	9	5	27	51	143	12
Korean Lang & Lit	10	9	12	32	107	386	25
Lower Division	4	5	13	20	65	260	17
Upper Division	5	4	10	12	41	123	8
Graduate Level	1	0	0	0	1	3	0
English	68	153	16	439	2,505	7,477	505
Lower Division	15	82	18	246	1,511	4,533	302
Upper Division	36	52	16	156	850	2,536	169
Graduate Level	17	19	6	37	144	408	34
English as a Second Lang	33	47	12	138	588	1,721	126
Lower Division	7	17	14	51	234	702	47
Upper Division	7	7	17	21	119	357	24
Graduate Level	19	23	9	66	235	662	55
Eng as a Second Lang	27	34	11	99	410	1,187	90
Lower Division	1	4	14	12	56	168	11
Upper Division	7	7	17	21	119	357	24
Graduate Level	19	23	9	66	235	662	55
Eng Lang Institute	6	13	14	39	178	534	36
Lower Division	6	13	14	39	178	534	36
European Lang & Lit	66	121	14	390	1,701	5,600	379
Lower Division	23	76	16	260	1,230	4,197	280
Upper Division	29	35	11	105	404	1,208	81
Graduate Level	14	10	6	25	67	195	18

TABLE 1 (cont.)

COURSE OFFERING	COURSES	CLASSES 1/		SEMESTER HOURS	STUDENT REGIS	STUDENT SEM HRS	COURSE FTE
		No.	Avg Size				
European Language	14	13	15	34	203	600	42
Lower Division	3	2	24	6	48	145	10
Upper Division	7	8	16	24	134	398	27
Graduate Level	4	3	5	4	21	57	5
French	12	24	14	80	332	1,120	75
Lower Division	4	16	16	56	256	892	59
Upper Division	5	6	10	18	62	186	12
Graduate Level	3	2	7	6	14	42	4
German	9	11	9	37	108	382	26
Lower Division	4	7	13	25	92	334	22
Upper Division	3	3	3	9	9	27	2
Graduate Level	2	1	3	3	7	21	2
Greek	4	5	8	15	38	114	8
Lower Division	2	3	11	9	34	102	7
Upper Division	1	1	1	3	1	3	0
Graduate Level	1	1	3	3	3	9	1
Italian	2	2	14	7	27	99	7
Lower Division	2	2	14	7	27	99	7
Latin	4	9	13	27	118	354	24
Lower Division	2	7	16	21	115	345	23
Upper Division	1	1	1	3	1	3	0
Graduate Level	1	1	2	3	2	6	1
Russian	5	5	4	17	18	68	5
Lower Division	2	2	7	8	14	56	4
Upper Division	3	3	1	9	4	12	1
Spanish	16	52	16	173	857	2,863	192
Lower Division	4	37	17	128	644	2,224	148
Upper Division	9	13	15	39	193	579	39
Graduate Level	3	2	10	6	20	60	5
Hawn & Indo-Pacific Lang & Li 2/	58	106	13	394	1,420	5,248	348
Lower Division	28	75	14	295	1,087	4,248	282
Upper Division	29	31	10	96	332	997	66
Graduate Level	1	0	0	3	1	3	0
Burmese	1	1	2	4	2	8	1
Lower Division	1	1	2	4	2	8	1
Cambodian	2	2	3	8	5	20	1
Lower Division	2	2	3	8	5	20	1
Filipino 3/.....	4	10	14	38	139	538	36
Lower Division	2	8	15	32	121	484	32
Upper Division	2	2	9	6	18	54	4
Hawaiian	15	52	15	196	796	2,977	198
Lower Division	4	37	16	148	589	2,356	157
Upper Division	11	15	13	48	207	621	41
Hindi	1	1	2	4	2	8	1
Lower Division	1	1	2	4	2	8	1

TABLE 1 (cont.)

COURSE OFFERING	COURSES	CLASSES 1/		SEMESTER HOURS	STUDENT REGIS	STUDENT SEM HRS	COURSE FTE
		No.	Avg Size				
Ilokano	5	9	15	33	134	504	33
Lower Division	2	6	17	24	102	408	27
Upper Division	3	3	11	9	32	96	6
Indo-Pacific Lang	8	4	21	15	96	281	19
Lower Division	4	3	21	9	72	208	14
Upper Division	3	1	21	3	23	70	5
Graduate Level	1	0	0	3	1	3	0
Indonesian	4	4	4	14	14	51	3
Lower Division	2	2	5	8	9	36	2
Upper Division	2	2	3	6	5	15	1
Samoan	5	10	14	37	143	542	36
Lower Division	2	7	16	28	113	452	30
Upper Division	3	3	10	9	30	90	6
Sanskrit	3	3	7	9	21	63	4
Lower Division	2	2	10	6	20	60	4
Upper Division	1	1	1	3	1	3	0
Tahitian	3	3	3	11	10	39	2
Lower Division	2	2	5	8	9	36	2
Upper Division	1	1	1	3	1	3	0
Thai	3	3	8	11	25	95	6
Lower Division	2	2	10	8	20	80	5
Upper Division	1	1	5	3	5	15	1
Vietnamese	4	4	8	14	33	122	8
Lower Division	2	2	12	8	23	92	6
Upper Division	2	2	5	6	10	30	2
Interp & Translation	3	2	12	4	28	56	4
Upper Division	3	2	12	4	28	56	4
Linguistics	21	29	23	85	708	2,060	142
Lower Division	1	12	42	36	498	1,494	100
Upper Division	4	5	19	15	96	288	19
Graduate Level	16	12	6	34	114	278	23
Second Language Acquisition	2	0	0	0	8	12	1
Graduate Level	2	0	0	0	8	12	1
Natural Sciences	224	375	27	750	10,406	25,122	1,713
Lower Division	65	222	36	390	8,001	18,588	1,239
Upper Division	78	85	17	233	1,576	4,304	287
Graduate Level	81	68	9	127	829	2,230	187
Biology Program	11	40	39	52	1,560	3,304	220
Lower Division	6	37	40	43	1,475	3,093	206
Upper Division	5	3	22	9	85	211	14
Botany/Botanical Sci	17	19	16	33	348	827	58
Lower Division	5	10	20	15	203	425	28
Upper Division	4	3	19	10	62	200	13
Graduate Level	8	6	7	8	83	202	17

TABLE 1 (cont.)

COURSE OFFERING	COURSES	CLASSES 1/		SEMESTER HOURS	STUDENT REGIS	STUDENT SEM HRS	COURSE FTE
		No.	Avg Size				
Botany	15	19	16	33	332	803	56
Lower Division	5	10	20	15	203	425	28
Upper Division	4	3	19	10	62	200	13
Graduate Level	6	6	7	8	67	178	15
Botanical Science	2	0	0	0	16	24	2
Graduate Level	2	0	0	0	16	24	2
Chemistry	29	61	29	90	1,819	4,181	282
Lower Division	14	49	68	72	1,706	3,889	259
Upper Division	4	4	13	10	48	117	8
Graduate Level	11	8	6	8	65	175	15
Information & Comp Sci	45	80	33	188	2,685	6,556	454
Lower Division	9	39	45	69	1,766	3,880	259
Upper Division	14	19	28	55	569	1,651	110
Graduate Level	22	22	15	64	350	1,025	85
Information & Comp Sci	29	62	39	137	2,462	5,893	401
Lower Division	7	35	49	57	1,731	3,775	252
Upper Division	14	19	28	55	569	1,651	110
Graduate Level	8	8	18	25	162	467	39
Library & Information St 4/	16	18	12	51	223	663	56
Lower Division	2	4	9	12	35	105	9
Graduate Level	14	14	13	39	188	558	47
Mathematics	36	61	24	172	1,459	4,138	277
Lower Division	12	39	32	106	1,234	3,476	232
Upper Division	17	17	11	51	197	589	39
Graduate Level	7	5	4	15	28	73	6
Microbiology	19	22	18	41	427	1,085	76
Lower Division	2	5	34	11	171	437	29
Upper Division	9	9	20	22	184	474	32
Graduate Level	8	8	6	8	72	174	15
Physics & Astronomy	39	58	25	111	1,494	3,636	248
Lower Division	15	40	34	70	1,358	3,248	217
Upper Division	10	8	5	23	44	126	9
Graduate Level	14	10	5	18	92	262	22
Astronomy	9	9	36	24	350	1,018	70
Lower Division	3	6	49	18	295	885	59
Upper Division	1	0	0	0	3	9	1
Graduate Level	5	3	9	6	52	124	10
Physics	30	49	23	87	1,144	2,618	178
Lower Division	12	34	31	52	1,063	2,363	158
Upper Division	9	8	5	23	41	117	8
Graduate Level	9	7	3	12	40	138	12
Zoology	28	34	15	63	614	1,395	98
Lower Division	2	3	29	4	88	140	9
Upper Division	15	22	17	53	387	936	62
Graduate Level	11	9	7	6	139	319	27

TABLE 1 (cont.)

COURSE OFFERING	COURSES	CLASSES 1/		SEMESTER HOURS	STUDENT REGIS	STUDENT SEM HRS	COURSE FTE
		No.	Avg Size				
Social Sciences	343	412	21	1,165	9,339	27,650	1,899
Lower Division	38	87	45	243	3,914	11,538	769
Upper Division	172	190	21	533	4,239	12,872	860
Graduate Level	133	135	6	389	1,186	3,240	270
Anthropology	33	38	15	106	650	1,845	129
Lower Division	5	12	24	30	293	837	56
Upper Division	16	15	15	45	238	714	48
Graduate Level	12	11	6	31	119	294	25
Communication	27	25	25	69	654	1,974	137
Lower Division	1	1	100	3	100	300	20
Upper Division	15	15	29	42	451	1,346	90
Graduate Level	11	9	9	24	103	328	27
Economics	29	32	37	96	1,208	3,584	244
Lower Division	3	7	111	21	780	2,340	156
Upper Division	17	18	18	54	318	954	64
Graduate Level	9	7	12	21	110	290	24
Ethnic Studies	15	26	17	60	440	1,321	88
Lower Division	1	5	35	15	174	522	35
Upper Division	14	21	12	45	266	799	53
Geography	31	36	22	93	851	2,349	160
Lower Division	4	13	30	27	395	1,023	68
Upper Division	19	18	20	51	375	1,126	75
Graduate Level	8	5	7	15	81	200	17
Journalism	14	16	25	48	394	1,182	79
Lower Division	3	6	31	18	186	558	37
Upper Division	11	10	21	30	208	624	42
Peace & Conflict Educ 3/.....	7	8	10	24	79	237	16
Lower Division	1	1	11	3	11	33	2
Upper Division	6	7	10	21	68	204	14
Political Science	46	58	14	171	886	2,611	184
Lower Division	4	14	14	42	198	594	40
Upper Division	21	25	18	74	470	1,478	99
Graduate Level	21	19	7	55	218	539	45
Population Studies	3	3	2	9	5	15	1
Graduate Level	3	3	2	9	5	15	1
Psychology	58	85	24	239	2,167	6,489	443
Lower Division	9	11	105	33	1,157	3,471	231
Upper Division	17	27	25	72	763	2,347	156
Graduate Level	32	47	4	134	247	671	56
Public Administration	7	9	7	29	64	252	36
Graduate Level	7	9	7	29	64	252	21
Social Science	4	4	20	7	80	221	15
Lower Division	1	1	64	3	64	192	13
Upper Division	1	1	4	0	4	5	
Graduate Level	2	2	6	4	12	24	2

TABLE 1 (cont.)

COURSE OFFERING	COURSES	CLASSES 1/		SEMESTER HOURS	STUDENT REGIS	STUDENT SEM HRS	COURSE FTE
		No.	Avg Size				
Sociology	47	53	27	159	1,507	4,536	308
Lower Division	5	14	37	42	512	1,536	102
Upper Division	27	27	32	81	879	2,678	179
Graduate Level	15	12	7	36	116	322	27
Urban & Regional Plan	15	12	10	34	129	359	29
Upper Division	2	1	17	3	18	54	4
Graduate Level	13	11	10	31	111	305	25
Women's Studies	7	7	32	21	225	675	45
Lower Division	1	2	22	6	44	132	9
Upper Division	6	5	36	15	181	543	36
Other Arts & Sciences	14	24	13	45	326	692	47
Lower Division	4	14	15	24	207	399	27
Upper Division	5	6	12	14	73	218	14
Graduate Level	5	4	11	7	46	75	6
Coll of Arts & Sci (CAS)	2	7	14	15	99	233	16
Lower Division	2	7	14	15	99	233	16
Communication & Info Sci	3	2	18	4	38	52	4
Graduate Level	3	2	18	4	38	52	4
Honors & Sel Studies	4	5	14	14	72	215	14
Upper Division	4	5	14	14	72	215	14
Interdisc Studies	5	10	12	12	117	192	11
Lower Division	2	7	15	9	108	166	11
Upper Division	1	1	1	0	1	3	0
Graduate Level	2	2	4	3	8	23	2
SCH OF HAWN, ASIAN, PAC ST	37	40	19	112	789	2,293	158
Lower Division	7	14	27	40	380	1,120	74
Upper Division	17	16	19	46	302	867	58
Graduate Level	13	10	7	26	107	306	26
Asian Studies Prog	17	16	13	46	239	702	50
Lower Division	1	1	47	3	47	141	9
Upper Division	7	7	17	21	121	363	24
Graduate Level	9	8	6	22	71	198	17
Hawaiian Studies	14	20	24	56	481	1,384	92
Lower Division	6	13	26	37	333	979	65
Upper Division	8	7	21	19	148	405	27
Pacific Island Stud	6	4	14	10	69	207	16
Upper Division	2	2	17	6	33	99	7
Graduate Level	4	2	11	4	36	108	9
SCH OCEAN EARTH SCI TECH	76	81	13	198	1,207	3,530	254
Lower Division	12	25	30	56	759	2,004	133
Upper Division	18	18	7	56	133	425	28
Graduate Level	46	38	5	86	315	1,101	93

TABLE 1 (cont.)

COURSE OFFERING	COURSES	CLASSES 1/		SEMESTER HOURS	STUDENT REGIS	STUDENT SEM HRS	COURSE FTE
		No.	Avg Size				
Geology-Geophysics	28	36	15	87	590	1,645	115
Lower Division	7	16	26	35	418	1,047	70
Upper Division	10	8	9	29	76	247	16
Graduate Level	11	12	5	23	96	351	29
Meteorology	12	12	14	28	197	541	40
Lower Division	3	6	19	12	113	273	18
Upper Division	2	2	10	6	19	57	4
Graduate Level	7	4	10	10	65	211	18
Ocean/Earth Sci & Tech	6	8	4	17	38	118	9
Upper Division	3	6	3	12	19	64	4
Graduate Level	3	2	8	5	19	54	5
Ocean Engineering	13	10	4	23	57	168	14
Lower Division	1	1	6	3	6	18	1
Graduate Level	12	9	4	20	51	150	13
Oceanography	17	15	19	43	325	1,058	76
Lower Division	1	2	111	6	222	666	44
Upper Division	3	2	9	9	19	57	4
Graduate Level	13	11	4	28	84	335	28
SCHOOL OF ARCHITECTURE	33	43	15	147	659	2,268	156
Lower Division	9	9	27	26	241	730	49
Upper Division	14	20	16	66	333	1,234	82
Graduate Level	10	14	6	55	85	304	25
COLLEGE OF BUSINESS ADMIN	94	165	28	486	4,630	13,807	969
Lower Division	4	15	48	43	725	2,159	144
Upper Division	58	106	27	318	2,898	8,694	578
Graduate Level	32	44	22	125	1,007	2,954	247
Accounting	14	27	33	81	894	2,682	181
Lower Division	2	10	49	30	490	1,470	98
Upper Division	8	13	27	39	357	1,071	71
Graduate Level	4	4	12	12	47	141	12
Business (General)	31	70	29	203	2,074	6,155	444
Upper Division	15	46	30	138	1,376	4,128	275
Graduate Level	16	24	28	65	698	2,027	169
Decision Sciences	9	15	28	45	424	1,272	87
Upper Division	7	12	32	36	381	1,143	76
Graduate Level	2	3	14	9	43	129	11
Finance	16	21	26	63	543	1,629	110
Lower Division	1	4	57	12	227	681	45
Upper Division	11	13	20	39	262	786	52
Graduate Level	4	4	14	12	54	162	13
Business Law	1	4	57	12	227	681	45
Lower Division	1	4	57	12	227	681	45
Finance	12	15	19	45	291	873	60
Upper Division	9	12	21	36	250	750	50
Graduate Level	3	3	14	9	41	123	10

TABLE 1 (cont.)

COURSE OFFERING	COURSES	CLASSES 1/		SEMESTER HOURS	STUDENT REGIS	STUDENT SEM HRS	COURSE FTE
		No.	Avg Size				
Real Estate	3	2	12	6	25	75	5
Upper Division	2	1	10	3	12	36	2
Graduate Level	1	1	13	3	13	39	3
Management & Ind Rel	15	18	19	52	340	1,004	74
Lower Division	1	1	8	1	8	8	1
Upper Division	10	11	17	33	193	579	38
Graduate Level	4	6	23	18	139	417	35
Human Resources Mgmt	4	5	14	13	72	200	15
Lower Division	1	1	8	1	8	8	1
Upper Division	2	3	15	9	46	138	9
Graduate Level	1	1	18	3	18	54	5
Industrial Relations	2	3	19	9	56	168	11
Upper Division	2	3	19	9	56	168	11
Management	9	10	21	30	212	636	48
Upper Division	6	5	18	15	91	273	18
Graduate Level	3	5	24	15	121	363	30
Marketing	9	14	25	42	355	1,065	73
Upper Division	7	11	30	33	329	987	66
Graduate Level	2	3	9	9	26	78	7
SCH OF TRAVEL INDUSTRY MGT	30	29	27	76	781	2,128	144
Lower Division	4	4	39	8	155	329	22
Upper Division	21	20	29	55	590	1,693	113
Graduate Level	5	5	7	13	36	106	9
Travel Industry Management	27	26	28	67	718	1,939	131
Lower Division	4	4	39	8	155	329	22
Upper Division	18	17	31	46	527	1,504	100
Graduate Level	5	5	7	13	36	106	9
Transportation	3	3	21	9	63	189	13
Upper Division	3	3	21	9	63	189	13
COLLEGE OF EDUCATION	225	395	12	1,385	4,992	14,412	1,038
Lower Division	24	34	30	50	1,009	1,514	100
Upper Division	83	216	11	898	2,338	8,171	545
Graduate Level	118	145	10	437	1,645	4,727	393
Counseling & Guidance	18	22	8	82	178	605	50
Graduate Level	18	22	8	82	178	605	50
Curriculum & Instruction	57	129	11	491	1,458	4,800	344
Upper Division	29	91	10	375	908	3,387	226
Graduate Level	28	38	13	116	550	1,413	118
Elementary Education	2	1	15	1	16	16	1
Graduate Level	2	1	15	1	16	16	1
Secondary Education	1	1	7	1	7	7	1
Graduate Level	1	1	7	1	7	7	1

TABLE 1 (cont.)

COURSE OFFERING	COURSES	CLASSES 1/		SEMESTER HOURS	STUDENT REGIS	STUDENT SEM HRS	COURSE FTE
		No.	Avg Size				
Teacher Ed & Curric Studies	54	127	11	489	1,435	4,777	342
Upper Division	29	91	10	375	908	3,387	226
Graduate Level	25	36	13	114	527	1,390	116
Education, Interdisc	15	64	6	348	386	2,008	142
Upper Division	7	49	5	303	260	1,476	98
Graduate Level	8	15	7	45	126	532	44
Educational Administration	18	19	14	46	302	863	69
Upper Division	2	3	17	9	50	150	10
Graduate Level	16	16	13	37	252	713	59
Educational Technology	11	11	16	33	181	537	41
Upper Division	4	5	18	15	89	267	18
Graduate Level	7	6	14	18	92	270	23
Educ Foundations	10	10	16	26	178	461	33
Upper Division	2	4	23	12	92	276	18
Graduate Level	8	6	11	14	86	185	15
Educ Psychology	18	25	11	68	289	820	59
Lower Division	1	1	11	2	11	22	1
Upper Division	5	10	17	30	180	538	36
Graduate Level	12	14	6	36	98	260	22
Kinesiology & Leisure Science 5/	55	64	22	138	1,425	2,603	177
Lower Division	23	33	30	48	998	1,492	99
Upper Division	22	22	15	64	351	893	60
Graduate Level	10	9	8	26	76	218	18
Special Education	23	51	11	153	595	1,715	123
Upper Division	12	32	13	90	408	1,184	79
Graduate Level	11	19	8	63	187	531	44
COLLEGE OF ENGINEERING	104	125	12	264	1,619	4,427	306
Lower Division	14	23	18	46	420	1,213	81
Upper Division	61	78	12	158	925	2,493	166
Graduate Level	29	24	7	60	274	721	59
Civil Engineering	36	39	14	106	573	1,545	108
Lower Division	5	8	23	19	181	433	29
Upper Division	19	19	15	55	283	833	56
Graduate Level	12	12	7	32	109	279	23
Electrical Engineering	42	64	11	101	790	2,241	155
Lower Division	7	13	15	23	200	702	47
Upper Division	24	42	11	57	454	1,162	77
Graduate Level	11	9	7	21	136	377	31
Interdisciplinary Engineering	1	1	17	1	17	17	1
Upper Division	1	1	17	1	17	17	1
Mechanical Engineering	25	21	11	56	239	624	42
Lower Division	2	2	20	4	39	78	5
Upper Division	17	16	11	45	171	481	32
Graduate Level	6	3	6	7	29	65	5

TABLE 1 (cont.)

COURSE OFFERING	COURSES	CLASSES 1/		SEMESTER HOURS	STUDENT REGIS	STUDENT SEM HRS	COURSE FTE
		No.	Avg Size				
COLL OF TROP AG & HUM RES	128	117	26	312	3,197	9,409	638
Lower Division	14	22	61	67	1,344	4,026	268
Upper Division	71	74	21	207	1,611	4,837	323
Graduate Level	43	21	7	38	242	546	47
Agric & Resource Econ	6	4	75	12	306	916	63
Lower Division	1	2	110	6	219	657	44
Upper Division	1	1	63	3	63	189	13
Graduate Level	4	1	17	3	24	70	6
Agronomy & Soil Science	9	6	8	17	55	165	12
Upper Division	3	3	10	11	31	118	8
Graduate Level	6	3	5	6	24	47	4
Agronomy & Soil Sci	6	3	8	6	31	75	6
Upper Division	1	1	14	4	14	56	4
Graduate Level	5	2	5	2	17	19	2
Soil Science	3	3	8	11	24	90	6
Upper Division	2	2	9	7	17	62	4
Graduate Level	1	1	7	4	7	28	2
Animal Science	15	12	15	34	200	575	39
Lower Division	1	1	17	3	17	51	3
Upper Division	10	9	16	27	149	456	30
Graduate Level	4	2	10	4	34	68	6
Biosystems Engineering 6/	8	6	8	16	57	154	11
Upper Division	4	4	9	12	35	105	7
Graduate Level	4	2	7	4	22	49	4
Entomology	11	8	8	18	74	165	12
Lower Division	1	1	15	3	15	45	3
Upper Division	4	4	6	10	25	63	4
Graduate Level	6	3	8	5	34	57	5
Environmental Biochemistry	2	1	10	3	13	42	3
Upper Division	1	1	10	3	10	30	2
Graduate Level	1	0	0	0	3	12	1
Food Sci & Hum Nutrition	15	16	39	43	640	1,915	129
Lower Division	1	5	86	15	432	1,296	86
Upper Division	8	7	25	20	175	541	36
Graduate Level	6	4	5	8	33	78	7
Horticulture	11	7	9	20	79	238	17
Upper Division	6	5	11	16	58	181	12
Graduate Level	5	2	4	4	21	57	5
Plant Molecular Physiol	4	2	19	4	48	127	10
Upper Division	2	1	26	3	28	83	6
Graduate Level	2	1	12	1	20	44	4
Plant Pathology	6	4	6	6	37	94	7
Lower Division	1	1	10	3	10	30	2
Graduate Level	5	3	4	3	27	64	5

TABLE 1 (cont.)

COURSE OFFERING	COURSES	CLASSES 1/		SEMESTER HOURS	STUDENT REGIS	STUDENT SEM HRS	COURSE FTE
		No.	Avg Size				
Human Resources	41	51	33	139	1,688	5,018	335
Lower Division	9	12	54	37	651	1,947	130
Upper Division	32	39	26	102	1,037	3,071	205
Family Resources	21	32	40	89	1,299	3,831	256
Lower Division	1	4	112	12	449	1,347	90
Upper Division	20	28	30	77	850	2,484	166
Textiles & Clothing	20	19	20	50	389	1,187	79
Lower Division	8	8	25	25	202	600	40
Upper Division	12	11	17	25	187	587	39
HEALTH SCI & SOCIAL WELFARE	1	1	17	3	17	51	3
Upper Division	1	1	17	3	17	51	3
SCHOOL OF MEDICINE	127	150	15	370	2,376	8,957	709
Lower Division	4	9	33	13	298	608	41
Upper Division	30	26	19	74	508	1,617	108
Graduate Level	93	115	13	283	1,570	6,732	560
Allied Medical Sci	31	38	10	119	390	1,237	93
Lower Division	2	2	10	4	20	40	3
Upper Division	14	15	14	40	211	604	41
Graduate Level	15	21	8	75	159	593	49
Medical Technology	9	9	8	48	73	376	29
Lower Division	2	2	10	4	20	40	3
Upper Division	6	6	8	18	45	128	9
Graduate Level	1	1	8	26	8	208	17
Speech Path & Audiology	22	29	11	71	317	861	64
Upper Division	8	9	18	22	166	476	32
Graduate Level	14	20	8	49	151	385	32
Anatomy & Repro Biol	7	3	21	3	79	98	7
Upper Division	2	0	0	0	4	10	0
Graduate Level	5	3	21	3	75	88	7
Anatomy	4	2	31	2	75	92	7
Upper Division	1	0	0	0	3	7	0
Graduate Level	3	2	31	2	72	85	7
Reproductive Biology	3	1	2	1	4	6	0
Upper Division	1	0	0	0	1	3	0
Graduate Level	2	1	2	1	3	3	0
Biochemistry & Biophysics	6	4	13	10	56	216	14
Upper Division	2	1	49	4	51	200	13
Graduate Level	4	3	1	6	5	16	1
Biochemistry	5	3	17	8	55	214	14
Upper Division	2	1	49	4	51	200	13
Graduate Level	3	2	1	4	4	14	1
Biophysics	1	1	1	2	1	2	0
Graduate Level	1	1	1	2	1	2	0

TABLE 1 (cont.)

COURSE OFFERING	COURSES	CLASSES 1/		SEMESTER HOURS	STUDENT REGIS	STUDENT SEM HRS	COURSE FTE
		No.	Avg Size				
Biomedical Sciences	23	21	35	74	758	3,125	259
Upper Division	3	3	9	11	27	99	7
Graduate Level	20	18	40	63	731	3,026	252
Fam Prac & Comm Health	4	6	6	20	35	310	26
Graduate Level	4	6	6	20	35	310	26
Genetics & Molecular Biology	12	8	13	17	123	400	28
Upper Division	4	3	28	10	88	316	21
Graduate Level	8	5	3	7	35	84	7
Medicine	4	18	6	21	108	779	65
Graduate Level	4	18	6	21	108	779	65
Obstetrics, Gyn & Women's Health.....	3	4	8	15	31	254	21
Graduate Level	3	4	8	15	31	254	21
Pathology	5	6	18	1	114	153	13
Upper Division	1	0	0	0	4	9	1
Graduate Level	4	6	18	1	110	144	12
Pediatrics	3	5	8	15	42	333	28
Graduate Level	3	5	8	15	42	333	28
Pharmacology	3	1	4	1	6	11	1
Graduate Level	3	1	4	1	6	11	1
Physiology	12	15	29	29	444	1,082	74
Lower Division	2	7	40	9	278	568	38
Upper Division	4	4	31	9	123	379	25
Graduate Level	6	4	7	11	43	135	11
Psychiatry	3	3	10	15	31	261	22
Graduate Level	3	3	10	15	31	261	22
Surgery	4	12	10	21	122	640	53
Graduate Level	4	12	10	21	122	640	53
Trop Med & Med Micro	7	6	5	9	37	58	5
Graduate Level	7	6	5	9	37	58	5
SCHOOL OF NURSING	67	115	12	245	1,413	3,163	220
Lower Division	7	19	8	21	147	189	13
Upper Division	44	76	14	168	1,068	2,436	162
Graduate Level	16	20	8	56	198	538	45
Dental Hygiene	23	51	9	62	481	705	47
Lower Division	7	19	8	21	147	189	13
Upper Division	16	32	10	41	334	516	34
Nursing	44	64	14	183	932	2,458	173
Upper Division	28	44	16	127	734	1,920	128
Graduate Level	16	20	8	56	198	538	45
SCHOOL OF PUBLIC HEALTH	44	42	8	112	400	1,022	84
Upper Division	1	2	10	6	19	57	4
Graduate Level	43	40	8	106	381	965	80

TABLE 1 (cont.)

COURSE OFFERING	COURSES	CLASSES 1/		SEMESTER HOURS	STUDENT REGIS	STUDENT SEM HRS	COURSE FTE
		No.	Avg Size				
SCHOOL OF SOCIAL WORK	33	46	20	124	936	2,832	229
Lower Division	1	1	27	3	27	81	5
Upper Division	6	6	19	19	116	369	25
Graduate Level	26	39	20	102	793	2,382	199
SCHOOL OF LAW	51	63	19	169	1,207	3,436	286
Graduate Level	51	63	19	169	1,207	3,436	286
MILITARY STUDIES	9	19	6	50	121	305	20
Lower Division	5	11	6	22	71	127	9
Upper Division	4	8	6	28	50	178	11
Aerospace Studies	4	8	7	18	59	119	8
Lower Division	2	4	9	6	37	53	4
Upper Division	2	4	6	12	22	66	4
Military Science	5	11	6	32	62	186	12
Lower Division	3	7	5	16	34	74	5
Upper Division	2	4	7	16	28	112	7

1/ Excludes classes numbered -99 (Individual Instruction), 700 (Thesis Research), and 800 (Dissertation Research).

2/ Formerly called Indo-Pacific Languages.

3/ Added in Fall 1999.

4/ In Fall 1998, the Graduate School of Library Studies was moved organizationally to the College of Arts & Sciences, Natural Sciences.

5/ Formerly called Health, Physical Education & Recreation.

6/ Formerly called Agricultural Engineering.

NOTE: Spring 2000 data includes Outreach College spring term classes as of census (2/11/00).

SOURCE: Computer Report 3011: "Course Registration Summary Report;" and
Computer Report 3011C: "Number of Classes and Average Class Size."

TABLE 2
STUDENT SEMESTER HOURS (SSH) AND COURSE FTE
UNIVERSITY OF HAWAII AT MANOA
SPRING 1996 TO SPRING 2000

COLLEGE AND LEVEL	SPRING 1996			SPRING 1997			SPRING 1998			SPRING 1999			SPRING 2000 1/		
	SSH No.	%C	COURSE FTE	SSH No.	%C	COURSE FTE	SSH No.	%C	COURSE FTE	SSH No.	%C	COURSE FTE	SSH No.	%C	COURSE FTE
TOTAL	206,715	-2	14,372	190,522	-8	13,260	185,281	-3	12,875	179,219	-3	12,469	182,497	NA	12,727
Lower Division	96,531	-1	6,434	87,788	-9	5,850	86,056	-2	5,732	81,435	-5	5,428	81,202		5,410
Upper Division	74,785	-2	4,982	69,453	-7	4,632	67,727	-2	4,509	66,321	-2	4,423	67,492		4,499
Graduate Level	35,399	-5	2,956	33,281	-6	2,778	31,498	-5	2,634	31,463	0	2,618	33,803		2,818
COLL OF ARTS & SCIENCES 2/	130,861	-1	8,902	119,286	-9	8,121	115,816	-3	7,880	109,789	-5	7,474	110,457		7,513
Lower Division	80,921	-2	5,392	73,041	-10	4,868	71,083	-3	4,735	66,942	-6	4,464	67,102		4,471
Upper Division	39,010	1	2,598	36,267	-7	2,416	35,177	-3	2,345	33,851	-4	2,257	34,370		2,293
Graduate Level 2/	10,930	-4	912	9,978	-9	837	9,556	-4	800	8,996	-6	753	8,985		749
Arts and Humanities	33,590	-3	2,277	29,684	-12	2,012	28,611	-4	1,939	26,913	-6	1,824	29,123		1,967
Lower Division	20,490	-3	1,366	17,530	-14	1,167	17,029	-3	1,135	16,172	-5	1,079	17,725		1,181
Upper Division	10,833	-1	722	10,203	-6	680	9,778	-4	652	9,058	-7	604	9,786		653
Graduate Level	2,267	-8	189	1,951	-14	165	1,804	-8	152	1,683	-7	141	1,612		133
Lang, Ling and Lit	33,775	0	2,282	32,889	-3	2,230	31,539	-4	2,139	29,106	-8	1,974	27,870		1,887
Lower Division	23,831	2	1,587	23,137	-3	1,543	21,810	-6	1,451	19,946	-9	1,329	18,852		1,255
Upper Division	7,936	-3	528	7,644	-4	509	7,601	-1	509	7,212	-5	482	7,190		479
Graduate Level	2,008	-7	167	2,108	5	178	2,128	1	179	1,948	-8	163	1,828		153
Natural Sciences 2/	28,486	-1	1,939	26,329	-8	1,793	26,284	0	1,789	24,910	-5	1,697	25,122		1,713
Lower Division	21,431	-1	1,428	19,780	-8	1,318	19,872	0	1,325	18,513	-7	1,234	18,588		1,239
Upper Division	4,569	1	304	4,230	-7	282	4,226	0	281	4,290	2	286	4,304		287
Graduate Level 2/	2,486	-2	207	2,319	-7	193	2,186	-6	183	2,107	-4	177	2,230		187
Social Sciences	34,201	-1	2,348	29,737	-13	2,041	28,536	-4	1,956	28,043	-2	1,924	27,650		1,899
Lower Division	14,913	-5	994	12,434	-17	829	12,047	-3	803	11,964	-1	799	11,538		769
Upper Division	15,248	2	1,016	13,816	-9	920	13,172	-5	877	12,914	-2	860	12,872		860
Graduate Level	4,040	-4	338	3,487	-14	292	3,317	-5	276	3,165	-5	265	3,240		270
Other Arts & Sciences	809	-2	56	647	-20	45	846	31	57	817	-3	55	692		47
Lower Division	256	-44	17	160	-38	11	325	103	21	347	7	23	399		27
Upper Division	424	47	28	374	-12	25	400	7	26	377	-6	25	218		14
Graduate Level	129	54	11	113	-12	9	121	7	10	93	-23	7	75		6

TABLE 2 (cont.)

COLLEGE AND LEVEL	SPRING 1996			SPRING 1997			SPRING 1998			SPRING 1999			SPRING 2000 1/		
	SSH		COURSE	SSH		COURSE	SSH		COURSE	SSH		COURSE	SSH		COURSE
	No.	%C	FTE	No.	%C	FTE	No.	%C	FTE	No.	%C	FTE	No.	%C	FTE
HAWN, ASIAN & PAC STUD	2,422	17	167	2,029	-16	140	2,243	11	155	2,441	9	170	2,293		158
Lower Division	1,041	17	69	810	-22	54	957	18	63	1,179	23	79	1,120		74
Upper Division	1,005	0	67	962	-4	64	966	0	65	865	-10	57	867		58
Graduate Level	376	104	31	257	-32	22	320	25	27	397	24	34	306		26
SCH OCEAN EARTH SCI TECH..	3,857	6	279	3,312	-14	242	3,380	2	244	3,575	6	255	3,530		254
Lower Division	2,358	14	158	1,944	-18	130	1,983	2	132	2,096	6	138	2,004		133
Upper Division	260	11	17	216	-17	15	304	41	20	372	22	25	425		28
Graduate Level	1,239	-7	104	1,152	-7	97	1,093	-5	92	1,107	1	92	1,101		93
SCHOOL OF ARCHITECTURE	2,662	11	180	2,937	10	199	2,668	-9	180	2,384	-11	163	2,268		156
Lower Division	1,498	7	100	1,306	-13	87	1,261	-3	84	754	-40	50	730		49
Upper Division	1,047	23	70	1,423	36	95	1,314	-8	88	1,337	2	89	1,234		82
Graduate Level	117	-24	10	208	78	17	93	-55	8	293	215	24	304		25
COLL OF BUSINESS ADMIN	14,256	-2	985	13,505	-5	929	13,123	-3	905	13,309	1	920	13,807		969
Lower Division	2,230	0	149	2,305	3	153	2,271	-1	151	2,306	2	154	2,159		144
Upper Division	9,985	-2	665	9,375	-6	625	9,022	-4	600	9,048	0	604	8,694		578
Graduate Level	2,041	-3	171	1,825	-11	151	1,830	0	154	1,955	7	162	2,954		247
SCH OF TRAVEL IND MGT	2,112	-19	142	1,952	-8	130	2,080	7	140	2,314	11	157	2,128		144
Lower Division	513	27	34	359	-30	24	371	3	25	442	19	29	329		22
Upper Division	1,517	-28	101	1,528	1	101	1,602	5	106	1,718	7	115	1,693		113
Graduate Level	82	-15	7	65	-21	5	107	65	9	154	44	13	106		9
COLLEGE OF EDUCATION	13,797	-13	994	11,763	-15	849	11,704	-1	838	11,992	2	846	14,412		1,038
Lower Division	1,341	-37	89	1,296	-3	86	1,173	-9	78	1,544	32	103	1,514		100
Upper Division	8,045	-9	536	6,555	-19	438	7,055	8	470	7,038	0	469	8,171		545
Graduate Level	4,411	-9	369	3,912	-11	325	3,476	-11	290	3,410	-2	274	4,727		393
COLLEGE OF ENGINEERING	6,389	-8	444	5,480	-14	381	4,891	-11	338	4,879	0	342	4,427		306
Lower Division	1,194	-1	80	1,088	-9	73	1,294	19	86	1,076	-17	72	1,213		81
Upper Division	4,107	-12	273	3,470	-16	231	2,899	-16	193	2,841	-2	189	2,493		166
Graduate Level	1,088	6	91	922	-15	77	698	-24	59	962	38	81	721		59
COLL OF TROP AG & HUM RES	10,120	12	689	10,353	2	704	10,144	-2	682	9,588	-5	650	9,409		638
Lower Division	4,446	10	297	4,499	1	300	4,494	0	299	4,013	-11	268	4,026		268
Upper Division	4,927	17	330	5,137	4	344	5,121	0	340	4,977	-3	332	4,837		323
Graduate Level	747	-8	62	717	-4	60	529	-26	43	598	13	50	546		47

TABLE 2 (cont.)

COLLEGE AND LEVEL	SPRING 1996			SPRING 1997			SPRING 1998			SPRING 1999			SPRING 2000 1/		
	SSH		COURSE	SSH		COURSE	SSH		COURSE	SSH		COURSE	SSH		COURSE
	No.	%C	FTE	No.	%C	FTE	No.	%C	FTE	No.	%C	FTE	No.	%C	FTE
HEALTH SCI & SOC WELFARE	90	91	6	54	-40	4	81	50	5	75	-7	5	51		3
Upper Division	63		4	54	-14	4	81	50	5	75	-7	5	51		3
Graduate Level	27	-43	2												
SCHOOL OF MEDICINE	8,709	5	687	8,923	2	705	8,753	-2	695	8,590	-2	680	8,957		709
Lower Division	573	523	38	718	25	48	731	2	49	715	-2	47	608		41
Upper Division	1,768	1	117	1,610	-9	107	1,425	-11	94	1,543	8	103	1,617		108
Graduate Level	6,368	-2	532	6,595	4	550	6,597	0	552	6,332	-4	530	6,732		560
SCHOOL OF NURSING	2,915	-22	201	2,789	-4	194	2,801	0	196	2,719	-3	189	3,163		220
Lower Division	198	5	13	153	-23	10	219	43	15	198	-10	13	189		13
Upper Division	2,306	-23	154	2,163	-6	145	2,071	-4	138	2,043	-1	136	2,436		162
Graduate Level	411	-24	34	473	15	39	511	8	43	478	-6	40	538		45
SCHOOL OF PUBLIC HEALTH...	2,232	-16	186	1,630	-27	136	1,463	-10	121	1,400	-4	117	1,022		84
Upper Division	42		3	24	-43	2	36	50	2	24	-33	2	57		4
Graduate Level	2,190	-18	183	1,606	-27	134	1,427	-11	119	1,376	-4	115	965		80
SCHOOL OF SOCIAL WORK	2,717	6	216	2,911	7	231	2,574	-12	204	2,381	-7	190	2,832		229
Lower Division	99	-8	7	111	12	7	90	-19	6	51	-43	3	81		5
Upper Division	579	32	39	570	-2	38	524	-8	35	433	-17	29	369		25
Graduate Level	2,039	2	170	2,230	9	186	1,960	-12	163	1,897	-3	158	2,382		199
SCHOOL OF LAW	3,333	-2	278	3,341	0	278	3,301	-1	275	3,508	6	292	3,436		286
Graduate Level	3,333	-2	278	3,341	0	278	3,301	-1	275	3,508	6	292	3,436		286
MILITARY STUDIES	243	8	16	257	6	17	259	1	17	275	6	19	305		20
Lower Division	119	11	8	158	33	10	129	-18	9	119	-8	8	127		9
Upper Division	124	5	8	99	-20	7	130	31	8	156	20	11	178		11

1/ Beginning in Spring 2000, includes Outreach College spring term classes as of census (2/11/00). Percentage change for Spring 2000 is therefore not comparable with prior year.

2/ In Fall 1998, the Graduate School of Library Studies was moved organizationally to the College of Arts & Sciences, Natural Sciences (Library and Information Studies). These figures have been adjusted to reflect this and so differ from those reported previously.

SOURCE: Computer Report 3011: "Course Registration Summary Report."

TABLE 3
NUMBER OF CLASSES AND AVERAGE CLASS SIZE 1/
UNIVERSITY OF HAWAI'I AT MANOA
SPRING 1996 TO SPRING 2000

COLLEGE AND LEVEL	SPRING 1996			SPRING 1997			SPRING 1998			SPRING 1999			SPRING 2000 2/		
	CLASSES No.	%C	AVG SIZE	CLASSES No.	%C	AVG SIZE	CLASSES No.	%C	AVG SIZE	CLASSES No.	%C	AVG SIZE	CLASSES No.	%C	AVG SIZE
TOTAL	3,292	-6.5	21	3,220	-2.2	20	3,215	-0.2	19	3,200	-0.5	19	3,363	NA	18
Lower Division	1,103	-11.3	31	1,071	-2.9	29	1,063	-0.7	29	1,045	-1.7	28	1,053		28
Upper Division	1,250	-3.5	20	1,205	-3.6	19	1,241	3.0	18	1,259	1.5	17	1,357		17
Graduate Level	939	-4.5	10	944	0.5	10	911	-3.5	10	896	-1.6	10	953		10
COLL OF ARTS & SCIENCES 3/	1,973	-6.9	23	1,963	-0.5	21	1,941	-1.1	20	1,861	-4.1	20	1,932		20
Lower Division	940	-10.7	30	900	-4.3	29	887	-1.4	28	852	-3.9	28	867		28
Upper Division	656	-2.8	20	692	5.5	18	679	-1.9	18	654	-3.7	18	690		17
Graduate Level 3/	377	-3.6	7	370	-1.9	7	375	1.4	7	355	-5.3	7	375		7
Arts and Humanities	526	-8.0	23	528	0.4	20	509	-3.6	20	457	-10.2	21	524		20
Lower Division	216	-10.7	33	201	-6.9	30	195	-3.0	31	180	-7.7	31	213		29
Upper Division	209	-4.1	20	229	9.6	17	223	-2.6	17	200	-10.3	18	223		17
Graduate Level	101	-9.8	6	98	-3.0	5	91	-7.1	5	77	-15.4	6	88		5
Lang, Ling and Lit	648	-5.0	16	622	-4.0	16	629	1.1	15	611	-2.9	14	597		14
Lower Division	403	-4.3	17	376	-6.7	18	375	-0.3	17	350	-6.7	17	331		17
Upper Division	179	-4.8	15	181	1.1	14	180	-0.6	14	180	0.0	13	186		13
Graduate Level	66	-9.6	9	65	-1.5	9	74	13.8	8	81	9.5	7	80		7
Natural Sciences 3/	386	-5.2	29	393	1.8	27	391	-0.5	28	382	-2.3	26	375		27
Lower Division	229	-6.9	40	229	0.0	38	228	-0.4	38	221	-3.1	36	222		36
Upper Division	82	-3.5	20	84	2.4	18	86	2.4	17	89	3.5	17	85		17
Graduate Level 3/	75	-1.3	8	80	6.7	7	77	-4.7	7	72	-6.5	7	68		9
Social Sciences	387	-13.0	28	395	2.1	24	387	-2.0	23	384	-0.8	23	412		21
Lower Division	82	-41.4	62	87	6.1	49	82	-5.7	50	91	11.0	45	87		45
Upper Division	174	-2.2	28	184	5.7	24	176	-4.3	23	172	-2.3	24	190		21
Graduate Level	131	3.1	8	124	-5.3	7	129	4.0	7	121	-6.2	7	135		6
Other Arts & Sciences	26	100.0	12	24	-7.7	10	25	4.2	14	27	8.0	14	24		13
Lower Division	10	150.0	11	7	-30.0	8	7	0.0	21	10	42.9	21	14		15
Upper Division	12	100.0	13	14	16.7	10	14	0.0	10	13	-7.1	10	6		12
Graduate Level	4	33.3	12	3	-25.0	14	4	33.3	14	4	0.0	12	4		11

TABLE 3 (cont.)

COLLEGE AND LEVEL	SPRING 1996			SPRING 1997			SPRING 1998			SPRING 1999			SPRING 2000 2/		
	CLASSES No.	%C	AVG SIZE	CLASSES No.	%C	AVG SIZE	CLASSES No.	%C	AVG SIZE	CLASSES No.	%C	AVG SIZE	CLASSES No.	%C	AVG SIZE
HAWN, ASIAN & PAC STUD	41	17.1	19	42	2.4	15	37	-11.9	19	39	5.4	20	40		19
Lower Division	9	12.5	39	8	-11.1	34	9	12.5	35	14	55.6	29	14		27
Upper Division	20	25.0	17	20	0.0	16	17	-15.0	18	14	-17.6	20	16		19
Graduate Level	12	9.1	7	14	16.7	4	11	-21.4	7	11	0.0	7	10		7
SCH OCEAN EARTH SCI TECH	80	5.3	15	76	-5.0	14	73	-3.9	14	82	12.3	14	81		13
Lower Division	26	0.0	34	27	3.8	28	25	-7.4	31	28	12.0	28	25		30
Upper Division	13	0.0	6	9	-30.8	7	11	22.2	9	14	27.3	8	18		7
Graduate Level	41	10.8	6	40	-2.4	6	37	-7.5	5	40	8.1	5	38		5
SCHOOL OF ARCHITECTURE	33	-13.2	25	32	-3.0	28	41	28.1	19	31	-24.4	22	43		15
Lower Division	12	-25.0	40	12	0.0	35	15	25.0	27	8	-46.7	31	9		27
Upper Division	15	0.0	21	14	-6.7	30	20	42.9	19	14	-30.0	25	20		16
Graduate Level	6	-14.3	6	6	0.0	9	6	0.0	3	9	50.0	9	14		6
COLL OF BUSINESS ADMIN	149	-13.9	30	149	0.0	29	149	0.0	29	155	4.0	29	165		28
Lower Division	15	-11.8	50	16	6.7	48	15	-6.3	51	15	0.0	52	15		48
Upper Division	111	-12.6	30	109	-1.8	29	105	-3.7	29	109	3.8	28	106		27
Graduate Level	23	-20.7	20	24	4.3	18	29	20.8	19	31	6.9	22	44		22
SCH OF TRAVEL IND MGT	33	-5.7	25	29	-12.1	26	30	3.4	27	35	16.7	25	29		27
Lower Division	4	0.0	60	3	-25.0	63	3	0.0	64	6	100.0	35	4		39
Upper Division	25	-10.7	22	22	-12.0	25	22	0.0	26	24	9.1	25	20		29
Graduate Level	4	33.3	7	4	0.0	6	5	25.0	7	5	0.0	10	5		7
COLLEGE OF EDUCATION	310	-8.6	14	248	-20.0	15	287	15.7	13	320	11.5	12	395		12
Lower Division	29	-44.2	29	32	10.3	26	31	-3.1	26	37	19.4	28	34		30
Upper Division	161	-4.7	15	105	-34.8	18	149	41.9	13	183	22.8	10	216		11
Graduate Level	120	1.7	10	111	-7.5	10	107	-3.6	9	100	-6.5	9	145		10
COLLEGE OF ENGINEERING	145	1.4	15	131	-9.7	14	128	-2.3	13	135	5.5	12	125		12
Lower Division	18	12.5	22	16	-11.1	24	22	37.5	19	23	4.5	16	23		18
Upper Division	91	-8.1	16	85	-6.6	15	80	-5.9	13	76	-5.0	13	78		12
Graduate Level	36	28.6	7	30	-16.7	7	26	-13.3	6	36	38.5	7	24		7
COLL OF TROP AG & HUM RES.....	129	-3.0	26	139	7.8	25	131	-5.8	25	118	-9.9	26	117		26
Lower Division	26	-16.1	58	29	11.5	52	27	-6.9	56	22	-18.5	61	22		61
Upper Division	75	5.6	22	79	5.3	22	79	0.0	21	71	-10.1	23	74		21
Graduate Level	28	-9.7	6	31	10.7	6	25	-19.4	5	25	0.0	6	21		7

TABLE 3 (cont.)

COLLEGE AND LEVEL	SPRING 1996			SPRING 1997			SPRING 1998			SPRING 1999			SPRING 2000 2/		
	CLASSES No.	%C	AVG SIZE	CLASSES No.	%C	AVG SIZE	CLASSES No.	%C	AVG SIZE	CLASSES No.	%C	AVG SIZE	CLASSES No.	%C	AVG SIZE
HEALTH SCI & SOC WELFARE..	2	100.0	15	1	-50.0	18	1	0.0	27	1	0.0	25	1		17
Upper Division	1		21	1	0.0	18	1	0.0	27	1	0.0	25	1		17
Graduate Level	1	0.0	9												
SCHOOL OF MEDICINE	151	-11.7	16	171	13.2	15	161	-5.8	16	161	0.0	16	150		15
Lower Division	3	50.0	69	8	166.7	44	8	0.0	44	8	0.0	44	9		33
Upper Division	22	-8.3	26	23	4.5	21	25	8.7	18	23	-8.0	21	26		19
Graduate Level	126	-13.1	13	140	11.1	13	128	-8.6	14	130	1.6	13	115		13
SCHOOL OF NURSING	60	-3.2	13	56	-6.7	13	64	14.3	12	97	51.6	12	115		12
Lower Division	6	100.0	11	6	0.0	9	7	16.7	10	19	171.4	8	19		8
Upper Division	42	-6.7	14	32	-23.8	17	39	21.9	14	63	61.5	13	76		14
Graduate Level	12	-14.3	8	18	50.0	7	18	0.0	8	15	-16.7	9	20		8
SCHOOL OF PUBLIC HEALTH	58	-17.1	14	53	-8.6	11	49	-7.5	11	49	0.0	10	42		8
Upper Division	1		14	1		8	1		12	1	0.0	8	2		10
Graduate Level	57	-18.6	14	52	-8.8	11	48	-7.7	11	48	0.0	10	40		8
SCHOOL OF SOCIAL WORK	49	14.0	18	51	4.1	18	47	-7.8	17	40	-14.9	19	46		20
Lower Division	1	0.0	33	1	0.0	37	1	0.0	30	1	0.0	17	1		27
Upper Division	9	50.0	21	8	-11.1	22	8	0.0	20	6	-25.0	23	6		19
Graduate Level	39	8.3	17	42	7.7	17	38	-9.5	16	33	-13.2	18	39		20
SCHOOL OF LAW	57	-8.1	21	62	8.8	19	58	-6.5	20	58	0.0	21	63		19
Graduate Level	57	-8.1	21	62	8.8	19	58	-6.5	20	58	0.0	21	63		19
MILITARY STUDIES	22	0.0	5	18	-18.2	6	18	0.0	6	18	0.0	6	19		6
Lower Division	14	0.0	5	13	-7.1	6	13	0.0	6	12	-7.7	5	11		6
Upper Division	8	0.0	5	5	-37.5	6	5	0.0	8	6	20.0	7	8		6

1/ Excludes classes numbered -99 (Individual Instruction), 700 (Thesis Research) and 800 (Dissertation Research).

2/ Beginning in Spring 2000, includes Outreach College spring term classes as of census (2/11/00). Percentage change for Spring 2000 is therefore not comparable with prior year.

3/ In Fall 1998, the Graduate School of Library Studies was moved organizationally to the College of Arts & Sciences, Natural Sciences (Library and Information Studies).

These figures have been adjusted to reflect this and so differ from those reported previously.

SOURCE: Computer Report 3011C: "Number of Classes and Average Class Size."