

COURSE REGISTRATION REPORT
UNIVERSITY OF HAWAI'I AT MANOA
SPRING 2005

Institutional Research Office
University of Hawai'i
September 2008

File Reference: Management and Planning Support Folder, Courses

Reports available online at: <http://www.hawaii.edu/iro/maps.htm>

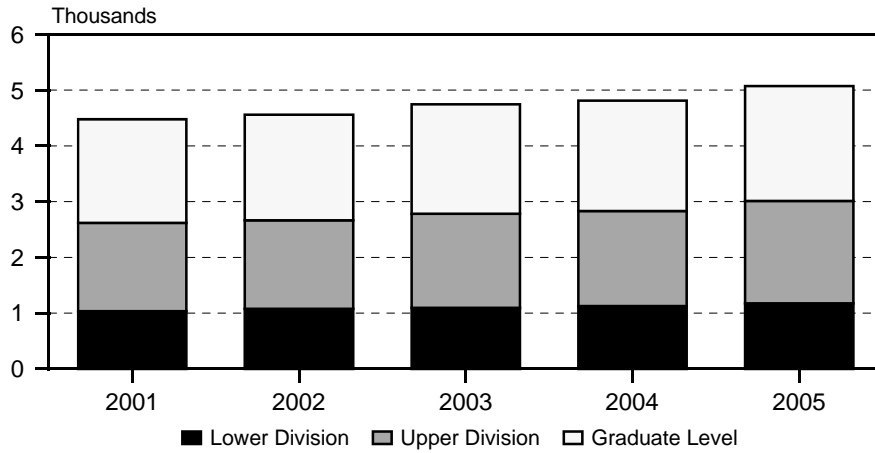
COURSE REGISTRATION REPORT
UNIVERSITY OF HAWAII AT MANOA

University of Hawai'i at Manoa - Spring Semesters

Figure 1	Total Number of Classes
Figure 2	Student Registrations
Figure 3	Student Semester Hours (SSH)
Figure 4	Course FTE
Figure 5	Course FTE, by College
Figure 6	Average Class Size
Figure 7	Average Class Size, by College
Table 1	Course Registration Summary, By Course Offering
Table 2	Course Registration Summary, By Course Level
Table 3	Student Semester Hours (SSH) and Course FTE
Table 4	Number of Classes and Average Class Size

University of Hawai'i at Manoa - Spring Semesters

Figure 1
Total Number of Classes



Includes classes numbered -99 (Individual Instr), 700 (Thesis Rsrch), and 800 (Dissertation Rsrch)

Figure 2
Student Registrations

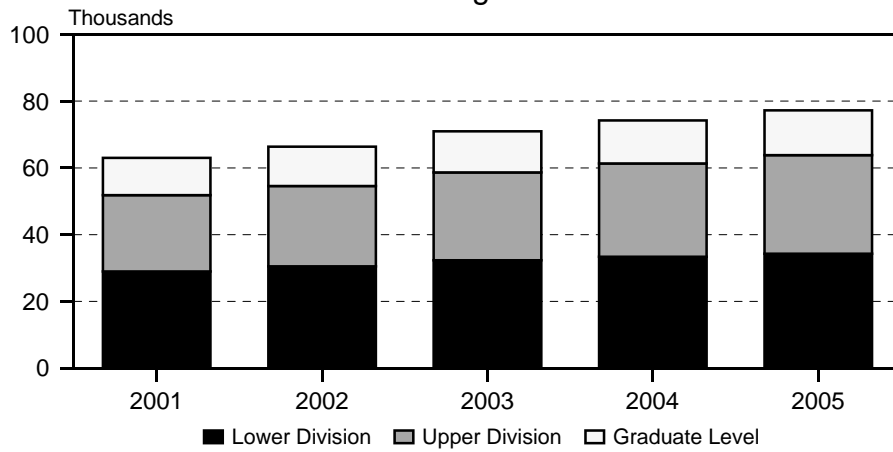
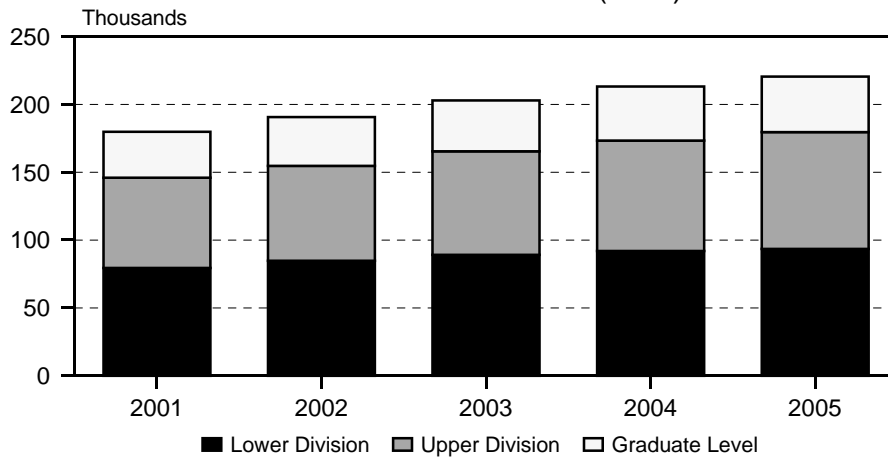


Figure 3
Student Semester Hours (SSH)



University of Hawai'i at Manoa - Spring Semesters

Figure 4
Course FTE

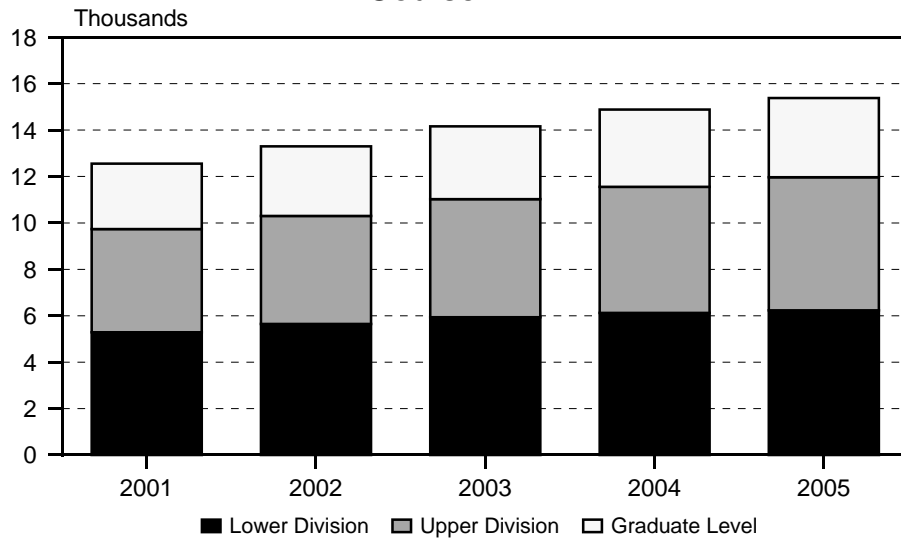


Figure 5
Course FTE, by College

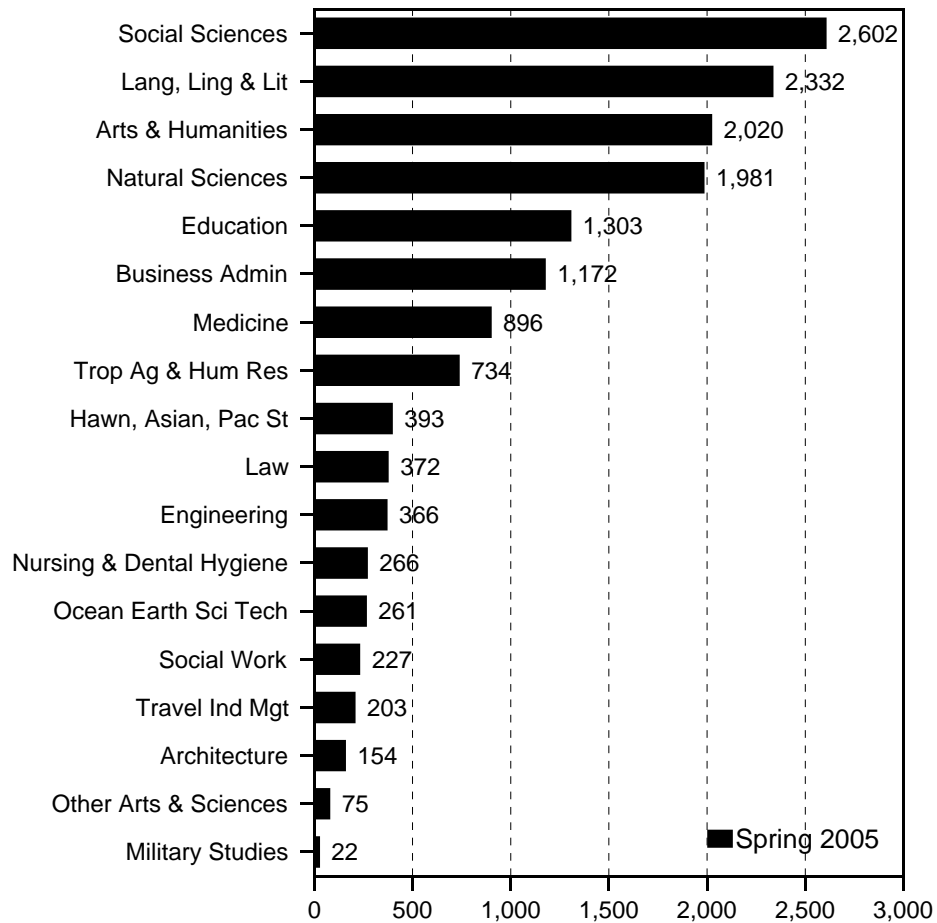


Figure 6
Average Class Size

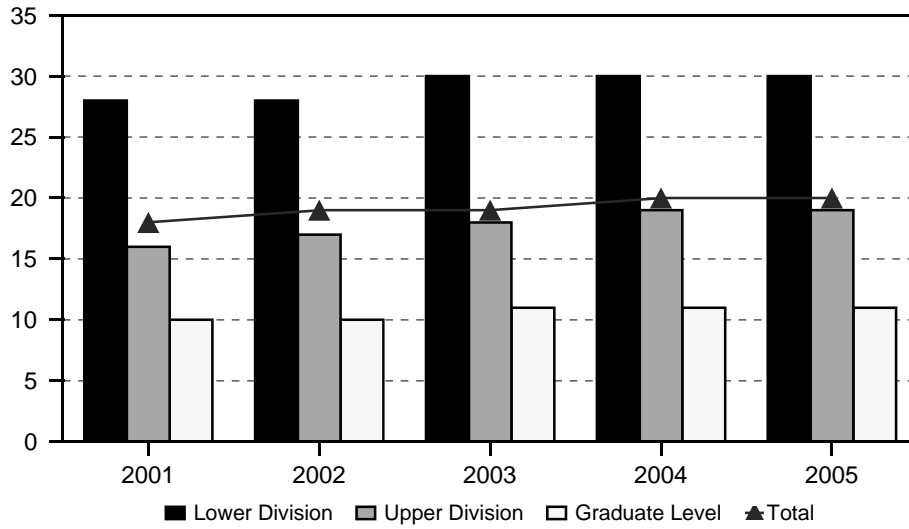


Figure 7
Average Class Size, by College

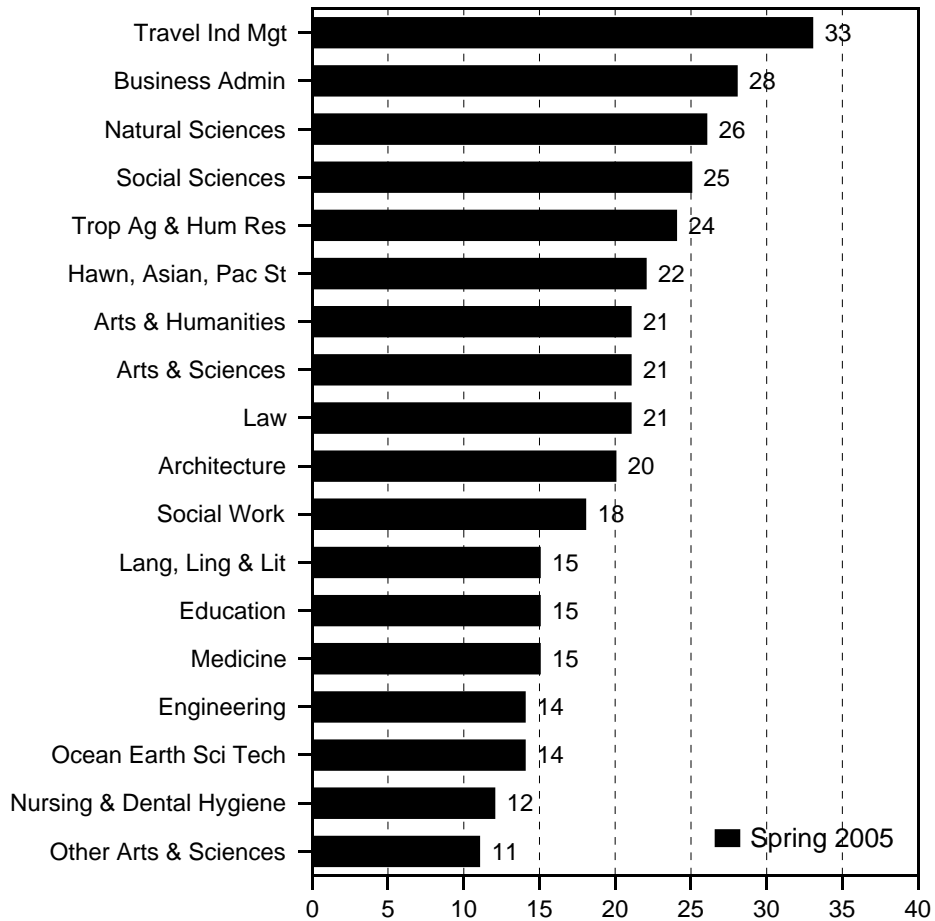


Table 1
Course Registration Summary, By Course Offering
 University of Hawai'i at Manoa
 Spring 2005

COURSE OFFERING	COURSES	CLASSES		SEMESTER HOURS	STUDENT REGIS	STUDENT SEM HRS	COURSE FTE
		No.	Avg Size				
TOTAL	2,640	3,760	20	10,014	77,194	220,471	15,379
Lower Division	468	1,158	30	2,929	34,294	93,508	6,234
Upper Division	1,159	1,554	19	4,479	29,562	86,024	5,735
Graduate Level	1,013	1,048	11	2,606	13,338	40,939	3,410
College of Arts & Sciences	1,509	2,159	21	5,758	46,451	132,138	9,010
Lower Division	355	911	29	2,422	26,120	74,318	4,955
Upper Division	720	837	19	2,334	15,990	45,670	3,043
Graduate Level	434	411	8	1,002	4,341	12,150	1,012
Arts & Humanities	433	505	21	1,190	11,038	29,798	2,020
Lower Division	118	195	30	474	5,835	16,458	1,097
Upper Division	208	219	20	530	4,453	11,328	756
Graduate Level	107	91	6	186	750	2,012	167
American Studies	31	34	18	102	642	1,892	131
Lower Division	6	12	24	36	286	858	57
Upper Division	11	11	23	33	259	773	52
Graduate Level	14	11	6	33	97	261	22
Art	90	104	20	277	2,160	6,390	430
Lower Division	29	53	24	155	1,294	3,820	255
Upper Division	40	41	19	113	802	2,346	156
Graduate Level	21	10	4	9	64	224	19
Dance	32	33	12	65	406	1,019	69
Lower Division	5	6	25	18	147	441	29
Upper Division	20	19	11	33	216	454	30
Graduate Level	7	8	5	14	43	124	10
History	52	56	35	162	2,012	5,927	402
Lower Division	8	12	83	36	1,001	3,003	200
Upper Division	29	30	28	90	836	2,504	167
Graduate Level	15	14	9	36	175	420	35
Music	120	137	14	224	1,928	3,140	214
Lower Division	48	63	12	92	776	1,441	96
Upper Division	56	61	17	102	1,049	1,434	96
Graduate Level	16	13	6	30	103	265	22
Philosophy	26	30	23	88	723	2,142	145
Lower Division	5	13	30	39	392	1,176	78
Upper Division	12	11	24	33	261	783	52
Graduate Level	9	6	7	16	70	183	15
Religion	18	22	56	66	1,256	3,764	253
Lower Division	5	10	105	30	1,048	3,144	210
Upper Division	7	8	20	24	166	496	33
Graduate Level	6	4	8	12	42	124	10
Speech	22	29	38	87	1,127	3,388	229
Lower Division	3	8	58	24	463	1,389	93
Upper Division	13	17	36	51	618	1,854	124
Graduate Level	6	4	9	12	46	145	12
Theatre	42	60	12	119	784	2,136	147
Lower Division	9	18	24	44	428	1,186	79
Upper Division	20	21	11	51	246	684	46

Graduate Level	13	21	4	24	110	266	22
Lang, Ling & Lit	426	718	15	2,258	11,012	34,419	2,332
Lower Division	118	373	17	1,234	6,483	20,888	1,393
Upper Division	215	264	14	810	3,693	11,224	748
COURSE OFFERING	COURSES	CLASSES		SEMESTER HOURS	STUDENT REGIS	STUDENT SEM HRS	COURSE FTE
		No.	Avg Size				
Graduate Level	93	81	8	214	836	2,307	191
East Asian Lang/Lit	111	178	11	606	2,121	7,168	483
Lower Division	25	78	14	287	1,056	3,853	256
Upper Division	57	78	11	255	919	2,937	196
Graduate Level	29	22	5	64	146	378	31
Chinese Language & Literature	27	35	10	120	356	1,227	83
Lower Division	5	12	12	46	138	528	35
Upper Division	16	18	10	59	190	616	41
Graduate Level	6	5	5	15	28	83	7
East Asian Languages & Lit	14	13	14	37	213	594	41
Lower Division	4	6	16	18	96	288	19
Upper Division	4	5	16	15	79	237	16
Graduate Level	6	2	4	4	38	69	6
Japanese Language & Literature	51	110	12	384	1,317	4,597	308
Lower Division	11	53	14	197	737	2,717	181
Upper Division	29	47	11	157	527	1,731	115
Graduate Level	11	10	4	30	53	149	12
Korean	19	20	10	65	235	750	51
Lower Division	5	7	12	26	85	320	21
Upper Division	8	8	13	24	123	353	24
Graduate Level	6	5	5	15	27	77	6
English	81	157	18	446	2,870	8,392	568
Lower Division	17	76	20	226	1,510	4,348	290
Upper Division	45	60	19	180	1,169	3,499	233
Graduate Level	19	21	6	40	191	545	45
Hawn & Indo-Pac Lang & Lit	82	117	13	412	1,482	5,374	359
Lower Division	38	71	15	274	1,081	4,176	278
Upper Division	44	46	9	138	401	1,198	81
Arabic	3	3	13	11	40	156	11
Lower Division	2	2	18	8	36	144	10
Upper Division	1	1	4	3	4	12	1
Cambodian	5	6	3	21	15	57	4
Lower Division	2	3	4	12	12	48	3
Upper Division	3	3	1	9	3	9	1
Chamorro	1	1	13	4	13	52	3
Lower Division	1	1	13	4	13	52	3
Filipino	8	12	14	44	164	626	42
Lower Division	4	8	17	32	134	536	36
Upper Division	4	4	8	12	30	90	6
Hawaiian	17	42	15	152	628	2,325	155
Lower Division	5	27	17	107	458	1,820	121
Upper Division	12	15	11	45	170	505	34
Ilokano	9	11	12	39	127	457	31
Lower Division	5	7	12	27	84	328	22
Upper Division	4	4	11	12	43	129	9
Indo-Pacific Languages	8	5	15	16	86	259	17
Lower Division	4	3	14	10	50	151	10
Upper Division	4	2	16	6	36	108	7
Indonesian	4	5	6	16	29	93	6
Lower Division	2	2	9	7	17	57	4

COURSE OFFERING	COURSES	CLASSES		SEMESTER HOURS	STUDENT REGIS	STUDENT SEM HRS	COURSE FTE
		No.	Avg Size				
Upper Division	2	3	4	9	12	36	2
Maori	4	4	16	14	63	204	13
Lower Division	3	3	19	11	57	186	12
Upper Division	1	1	6	3	6	18	1
Samoan	8	13	18	46	230	844	56
Lower Division	2	7	22	28	154	616	41
Upper Division	6	6	13	18	76	228	15
Sanskrit	2	2	6	6	12	36	2
Lower Division	2	2	6	6	12	36	2
Tahitian	5	5	3	15	17	51	4
Lower Division	2	2	7	6	14	42	3
Upper Division	3	3	1	9	3	9	1
Thai	4	4	7	14	26	96	7
Lower Division	2	2	9	8	18	72	5
Upper Division	2	2	4	6	8	24	2
Vietnamese	4	4	8	14	32	118	8
Lower Division	2	2	11	8	22	88	6
Upper Division	2	2	5	6	10	30	2
Lang & Lit Eur & Amer	78	163	17	493	2,746	8,226	552
Lower Division	29	106	18	321	1,926	5,781	387
Upper Division	39	50	15	153	754	2,255	149
Graduate Level	10	7	9	19	66	190	16
French	19	41	16	129	636	1,920	129
Lower Division	5	25	17	78	433	1,302	87
Upper Division	11	13	13	42	174	531	35
Graduate Level	3	3	10	9	29	87	7
German	9	15	15	45	231	693	46
Lower Division	4	11	15	33	170	510	34
Upper Division	5	4	15	12	61	183	12
Greek	3	3	11	9	33	99	7
Lower Division	2	2	15	6	29	87	6
Upper Division	1	1	4	3	4	12	1
Hebrew	2	2	7	6	14	42	3
Lower Division	2	2	7	6	14	42	3
Italian	3	6	13	18	78	234	16
Lower Division	3	6	13	18	78	234	16
Lang & Lit Europe & Americas	17	13	31	37	444	1,308	88
Lower Division	4	3	78	9	243	729	49
Upper Division	8	8	20	24	187	545	36
Graduate Level	5	2	4	4	14	34	3
Latin	3	7	17	21	121	363	24
Lower Division	2	6	19	18	114	342	23
Upper Division	1	1	7	3	7	21	1
Russian	2	2	9	6	18	54	4
Lower Division	2	2	9	6	18	54	4
Spanish	20	74	16	222	1,171	3,513	235
Lower Division	5	49	17	147	827	2,481	165
Upper Division	13	23	14	69	321	963	64
Graduate Level	2	2	12	6	23	69	6
Language, Linguistics, & Lit	4	4	4	6	16	34	2
COURSE OFFERING	COURSES	CLASSES		SEMESTER HOURS	STUDENT REGIS	STUDENT SEM HRS	COURSE FTE
		No.	Avg Size				
Upper Division	4	4	4	6	16	34	2

Linguistics	29	37	25	111	978	2,859	199
Lower Division	2	12	47	36	569	1,707	114
Upper Division	11	11	20	33	224	670	45
Graduate Level	16	14	9	42	185	482	40
Second Lang Studies	36	58	12	172	730	2,158	155
Lower Division	7	30	11	90	341	1,023	68
Upper Division	10	11	13	33	141	423	28
Graduate Level	19	17	13	49	248	712	59
English Language Institute	7	30	11	90	341	1,023	68
Lower Division	7	30	11	90	341	1,023	68
Second Language Acquisition	2				17	36	3
Graduate Level	2				17	36	3
Second Language Studies	27	28	13	82	372	1,099	84
Upper Division	10	11	13	33	141	423	28
Graduate Level	17	17	13	49	231	676	56
Translation & Interpretation	5	4	17	12	69	208	14
Upper Division	5	4	17	12	69	208	14
Natural Sciences	252	422	26	863	11,292	28,945	1,981
Lower Division	70	233	35	422	8,223	20,531	1,369
Upper Division	96	112	16	292	1,964	5,296	352
Graduate Level	86	77	10	149	1,105	3,118	260
Biology	18	63	31	87	2,022	4,351	290
Lower Division	8	53	34	63	1,795	3,745	250
Upper Division	10	10	19	24	227	606	40
Botany/Botanical Sciences	20	25	21	42	604	1,630	115
Lower Division	4	9	24	13	218	492	33
Upper Division	9	8	32	24	265	804	54
Graduate Level	7	8	7	5	121	334	28
Botany	20	25	21	42	604	1,630	115
Lower Division	4	9	24	13	218	492	33
Upper Division	9	8	32	24	265	804	54
Graduate Level	7	8	7	5	121	334	28
Chemistry	31	70	31	110	2,210	5,144	347
Lower Division	14	55	37	81	2,061	4,748	317
Upper Division	5	6	10	14	64	152	10
Graduate Level	12	9	6	15	85	244	20
Info & Comp Science	48	66	23	200	1,578	5,210	369
Lower Division	7	16	44	52	708	2,660	177
Upper Division	17	26	15	78	409	1,189	79
Graduate Level	24	24	18	70	461	1,361	113
Information & Computer Science	32	50	24	152	1,238	4,190	284
Lower Division	7	16	44	52	708	2,660	177
Upper Division	17	26	15	78	409	1,189	79
Graduate Level	8	8	12	22	121	341	28
Library & Information Science	16	16	21	48	340	1,020	85
Graduate Level	16	16	21	48	340	1,020	85
Mathematics	39	62	28	173	1,744	5,148	345
Lower Division	14	36	39	97	1,411	4,170	278
Upper Division	20	23	13	67	300	875	58
COURSE OFFERING	COURSES	CLASSES		SEMESTER HOURS	STUDENT REGIS	STUDENT SEM HRS	COURSE FTE
		No.	Avg Size				
Graduate Level	5	3	5	9	33	103	9
Microbiology	19	29	19	59	604	1,518	105
Lower Division	2	7	33	16	233	600	40
Upper Division	10	16	18	36	297	700	47
Graduate Level	7	6	8	7	74	218	18

Physics & Astronomy	44	72	26	135	1,908	4,523	307
Lower Division	19	54	32	96	1,713	3,982	265
Upper Division	8	6	9	17	62	183	12
Graduate Level	17	12	6	22	133	358	30
Astronomy	13	15	32	30	524	1,364	94
Lower Division	4	10	44	24	435	1,157	77
Upper Division	1				1	3	
Graduate Level	8	5	10	6	88	204	17
Physics	31	57	24	105	1,384	3,159	213
Lower Division	15	44	29	72	1,278	2,825	188
Upper Division	7	6	9	17	61	180	12
Graduate Level	9	7	4	16	45	154	13
Zoology	33	35	15	57	622	1,421	103
Lower Division	2	3	28	4	84	134	9
Upper Division	17	17	18	32	340	787	52
Graduate Level	14	15	8	21	198	500	42
Social Sciences	369	478	25	1,376	12,681	37,876	2,602
Lower Division	41	97	56	279	5,446	16,170	1,078
Upper Division	186	222	25	648	5,666	17,127	1,141
Graduate Level	142	159	7	449	1,569	4,579	383
Anthropology	36	42	30	122	1,354	3,992	274
Lower Division	5	14	53	42	739	2,217	148
Upper Division	16	17	25	51	438	1,303	87
Graduate Level	15	11	10	29	177	472	39
School Of Communication	41	45	17	133	803	2,469	170
Lower Division	1	1	84	3	84	252	17
Upper Division	27	28	21	85	600	1,872	124
Graduate Level	13	16	7	45	119	345	29
Communication	30	32	18	90	602	1,787	125
Lower Division	1	1	84	3	84	252	17
Upper Division	16	15	26	42	399	1,190	79
Graduate Level	13	16	7	45	119	345	29
Journalism	11	13	15	43	201	682	45
Upper Division	11	13	15	43	201	682	45
Economics	32	43	41	126	1,815	5,463	371
Lower Division	3	11	96	33	1,051	3,153	210
Upper Division	19	24	27	69	640	1,918	128
Graduate Level	10	8	12	24	124	392	33
Ethnic Studies	17	24	28	60	684	2,047	137
Lower Division	2	7	40	21	278	834	56
Upper Division	15	17	23	39	406	1,213	81
Geography	32	38	29	102	1,152	3,244	222
Lower Division	4	13	49	27	632	1,728	115
Upper Division	17	18	22	54	394	1,178	79
Graduate Level	11	7	9	21	126	338	28
COURSE OFFERING	COURSES	CLASSES		SEMESTER HOURS	STUDENT REGIS	STUDENT SEM HRS	COURSE FTE
		No.	Avg Size				
Internat Cultural Studies	2	2	3	4	6	8	1
Graduate Level	2	2	3	4	6	8	1
Peace and Conflict Education	10	11	12	33	131	393	27
Lower Division	1	2	21	6	42	126	8
Upper Division	6	6	12	18	71	213	14
Graduate Level	3	3	6	9	18	54	5
Political Science	51	74	16	226	1,320	4,016	278
Lower Division	7	16	19	48	304	912	61
Upper Division	30	43	18	135	793	2,479	165

Graduate Level	14	15	9	43	223	625	52
Population Studies	2	1	6	1	7	9	1
Graduate Level	2	1	6	1	7	9	1
Psychology	54	84	31	244	2,698	8,058	552
Lower Division	10	14	104	42	1,459	4,377	292
Upper Division	17	24	37	66	942	2,820	188
Graduate Level	27	46	5	136	297	861	72
Public Administration	8	14	6	46	91	363	30
Graduate Level	8	14	6	46	91	363	30
Social Science	2	4	22	10	87	251	16
Lower Division	1	3	27	9	82	246	16
Upper Division	1	1	5	1	5	5	
Sociology	48	60	29	176	1,788	5,321	364
Lower Division	4	12	48	36	575	1,725	115
Upper Division	26	33	31	97	1,015	3,042	203
Graduate Level	18	15	9	43	198	554	46
Urban & Regional Planning	19	20	9	46	188	574	47
Upper Division	2	1	19	3	20	60	4
Graduate Level	17	19	8	43	168	514	43
Women's Studies	15	16	35	47	557	1,668	112
Lower Division	3	4	50	12	200	600	40
Upper Division	10	10	34	30	342	1,024	68
Graduate Level	2	2	8	5	15	44	4
Other Arts & Sciences	29	36	11	71	428	1,100	75
Lower Division	8	13	10	13	133	271	18
Upper Division	15	20	10	54	214	695	46
Graduate Level	6	3	23	4	81	134	11
Colleges of Arts & Sciences	2	2	12	2	30	80	5
Lower Division	2	2	12	2	30	80	5
Communication & Info Sciences	5	2	33	4	78	125	10
Graduate Level	5	2	33	4	78	125	10
Honors	6	17	8	32	130	276	18
Lower Division	3	8	8	5	64	78	5
Upper Division	3	9	7	27	66	198	13
Interdisciplinary Studies	16	15	12	33	190	619	42
Lower Division	3	3	13	6	39	113	8
Upper Division	12	11	12	27	148	497	33
Graduate Level	1	1	3		3	9	1
School of Hawn, Asian, Pac St	57	83	22	239	1,898	5,778	393
Lower Division	7	40	30	117	1,228	3,819	255
Upper Division	30	28	18	81	519	1,511	101
COURSE OFFERING	COURSES	CLASSES		SEMESTER HOURS	STUDENT REGIS	STUDENT SEM HRS	COURSE FTE
		No.	Avg Size				
Graduate Level	20	15	7	41	151	448	37
Asian Studies	27	25	15	69	385	1,091	77
Lower Division	1	1	51	3	51	153	10
Upper Division	13	13	18	35	229	636	42
Graduate Level	13	11	8	31	105	302	25
Hawaiian Asian & Pac Studies	1				15	178	12
Lower Division	1				15	178	12
Hawaiian Studies	18	51	27	151	1,409	4,234	283
Lower Division	5	39	30	114	1,162	3,488	233
Upper Division	13	12	19	37	247	746	50
Pacific Islands Studies	11	7	9	19	89	275	21
Upper Division	4	3	14	9	43	129	9
Graduate Level	7	4	6	10	46	146	12

School of Ocean Earth Sci Tech	73	77	14	184	1,228	3,606	261
Lower Division	10	25	28	47	700	1,773	118
Upper Division	20	16	10	47	178	539	35
Graduate Level	43	36	6	90	350	1,294	108
Geology & Geophysics	27	28	13	75	410	1,267	92
Lower Division	6	10	21	22	211	580	39
Upper Division	10	8	9	26	77	253	17
Graduate Level	11	10	7	27	122	434	36
Meteorology	15	14	13	34	211	599	42
Lower Division	2	5	21	9	107	271	18
Upper Division	5	4	12	12	52	156	10
Graduate Level	8	5	6	13	52	172	14
Ocean & Earth Science & Tech	1	1	4	1	4	4	
Upper Division	1	1	4	1	4	4	
Ocean & Resources Engineering	12	10	3	26	54	211	18
Graduate Level	12	10	3	26	54	211	18
Oceanography	18	24	20	48	549	1,525	109
Lower Division	2	10	38	16	382	922	61
Upper Division	4	3	13	8	45	126	8
Graduate Level	12	11	6	24	122	477	40
School of Architecture	26	32	20	101	650	2,197	154
Lower Division	7	11	25	30	271	741	49
Upper Division	10	13	22	23	293	1,002	67
Graduate Level	9	8	10	48	86	454	38
Architecture	26	32	20	101	650	2,197	154
Lower Division	7	11	25	30	271	741	49
Upper Division	10	13	22	23	293	1,002	67
Graduate Level	9	8	10	48	86	454	38
College of Business Admin	109	194	28	551	5,548	16,605	1,172
Lower Division	6	19	46	55	879	2,648	177
Upper Division	63	121	28	348	3,379	10,208	681
Graduate Level	40	54	23	148	1,290	3,749	314
Accounting	22	35	32	111	1,124	3,460	238
Lower Division	2	9	59	27	533	1,599	107
Upper Division	12	19	24	63	450	1,438	96
Graduate Level	8	7	20	21	141	423	35
Business	36	91	27	241	2,525	7,481	538
COURSE OFFERING	COURSES	CLASSES		SEMESTER HOURS	STUDENT REGIS	STUDENT SEM HRS	COURSE FTE
		No.	Avg Size				
Lower Division	2	5	20	15	103	336	22
Upper Division	16	57	28	153	1,590	4,771	318
Graduate Level	18	29	28	73	832	2,374	198
Finance Econ & Institution	16	22	32	66	703	2,109	144
Lower Division	1	4	59	12	235	705	47
Upper Division	11	14	28	42	396	1,188	79
Graduate Level	4	4	18	12	72	216	18
Business Law	2	5	49	15	243	729	49
Lower Division	1	4	59	12	235	705	47
Graduate Level	1	1	8	3	8	24	2
Finance	12	15	26	45	390	1,170	81
Upper Division	9	12	27	36	326	978	65
Graduate Level	3	3	21	9	64	192	16
Insurance	1	1	40	3	40	120	8
Upper Division	1	1	40	3	40	120	8
Real Estate	1	1	30	3	30	90	6
Upper Division	1	1	30	3	30	90	6

Information Technology Mgt	10	11	18	30	214	627	44
Upper Division	7	8	22	21	183	533	36
Graduate Level	3	3	10	9	31	94	8
Management & Industrial Rel	16	20	28	58	558	1,656	122
Lower Division	1	1	8	1	8	8	1
Upper Division	10	10	34	30	346	1,036	69
Graduate Level	5	9	23	27	204	612	52
Human Resources Mgt	7	6	28	16	166	480	35
Lower Division	1	1	8	1	8	8	1
Upper Division	4	3	35	9	107	319	21
Graduate Level	2	2	26	6	51	153	13
Industrial Relations	2	2	16	6	31	93	7
Upper Division	1	1	16	3	16	48	3
Graduate Level	1	1	15	3	15	45	4
Management	7	12	30	36	361	1,083	80
Upper Division	5	6	37	18	223	669	45
Graduate Level	2	6	23	18	138	414	35
Marketing	9	15	28	45	424	1,272	86
Upper Division	7	13	32	39	414	1,242	83
Graduate Level	2	2	5	6	10	30	3
School of Travel Ind Mgt	32	33	33	93	1,080	3,002	203
Lower Division	3	4	67	10	266	657	44
Upper Division	25	25	31	71	765	2,198	147
Graduate Level	4	4	12	12	49	147	12
Travel Industry Management	32	33	33	93	1,080	3,002	203
Lower Division	3	4	67	10	266	657	44
Upper Division	25	25	31	71	765	2,198	147
Graduate Level	4	4	12	12	49	147	12
College of Education	238	447	15	1,389	7,201	18,291	1,303
Lower Division	30	66	32	74	2,123	2,471	165
Upper Division	85	229	14	862	3,343	10,772	718
Graduate Level	123	152	10	453	1,735	5,048	420
Counseling & Guidance	20	23	6	85	150	523	44
COURSE OFFERING	COURSES	CLASSES		SEMESTER HOURS	STUDENT REGIS	STUDENT SEM HRS	COURSE FTE
		No.	Avg Size				
Graduate Level	20	23	6	85	150	523	44
Curriculum Studies	26	31	14	84	504	1,343	110
Upper Division	3	4	13	12	53	159	11
Graduate Level	23	27	14	72	451	1,184	99
Education, Interdisciplinary	4	4	7	3	51	123	10
Graduate Level	4	4	7	3	51	123	10
Educational Administration	17	21	17	55	408	1,165	93
Upper Division	3	4	18	12	78	230	15
Graduate Level	14	17	16	43	330	935	78
Educational Technology	13	19	12	57	242	724	52
Upper Division	5	10	16	30	156	468	31
Graduate Level	8	9	9	27	86	256	21
Educational Foundations	14	20	19	58	403	1,180	84
Upper Division	5	12	23	36	278	832	55
Graduate Level	9	8	13	22	125	348	29
Educational Psychology	17	24	16	64	416	1,220	86
Upper Division	7	15	21	45	313	939	63
Graduate Level	10	9	9	19	103	281	23
Institute for Teacher Educatn	44	143	11	649	1,580	5,811	398
Upper Division	33	126	11	573	1,422	5,159	344
Graduate Level	11	17	9	76	158	652	54

Kinesiology & Leisure Science	59	98	28	167	2,761	4,225	284
Lower Division	30	66	32	74	2,123	2,471	165
Upper Division	19	25	23	76	570	1,606	107
Graduate Level	10	7	7	17	68	148	12
Special Education	24	64	10	167	686	1,977	142
Upper Division	10	33	14	78	473	1,379	92
Graduate Level	14	31	6	89	213	598	50
College of Engineering	105	132	14	268	1,956	5,296	366
Lower Division	14	23	24	43	560	1,550	103
Upper Division	54	76	14	150	1,097	2,906	194
Graduate Level	37	33	6	75	299	840	69
Civil & Environmental Engr	36	42	16	112	702	1,846	128
Lower Division	5	8	28	15	221	514	34
Upper Division	16	18	20	53	357	1,029	69
Graduate Level	15	16	6	44	124	303	25
Electrical Engineering	43	64	12	104	832	2,347	162
Lower Division	6	9	25	16	226	789	53
Upper Division	23	44	11	61	491	1,205	80
Graduate Level	14	11	6	27	115	353	29
Engineering, Interdisciplinary	3	5	17	9	85	181	12
Lower Division	2	4	19	8	75	171	11
Upper Division	1	1	10	1	10	10	1
Mechanical Engineering	23	21	15	43	337	922	64
Lower Division	1	2	19	4	38	76	5
Upper Division	14	13	18	35	239	662	44
Graduate Level	8	6	6	4	60	184	15
College of Trop Ag & Hum Res	141	148	24	383	3,743	10,782	734
Lower Division	18	30	48	79	1,430	4,180	278
Upper Division	76	93	20	259	1,902	5,616	374
COURSE OFFERING	COURSES	CLASSES		SEMESTER HOURS	STUDENT REGIS	STUDENT SEM HRS	COURSE FTE
		No.	Avg Size				
Graduate Level	47	25	10	45	411	986	82
Family & Consumer Sci	51	73	26	204	1,914	5,693	379
Lower Division	9	13	49	41	638	1,967	131
Upper Division	41	60	21	163	1,275	3,723	248
Graduate Level	1				1	3	
Apparel Prod Desgn & Merchandg	28	32	18	96	580	1,777	118
Lower Division	8	10	29	32	293	932	62
Upper Division	19	22	12	64	286	842	56
Graduate Level	1				1	3	
Family Resources	23	41	32	108	1,334	3,916	261
Lower Division	1	3	115	9	345	1,035	69
Upper Division	22	38	26	99	989	2,881	192
Hum Nutr/Food/Animal Sci	27	28	31	71	928	2,562	173
Lower Division	4	11	49	27	536	1,506	100
Upper Division	13	12	24	37	305	900	60
Graduate Level	10	5	11	7	87	156	13
Animal Science	14	10	17	26	192	510	36
Lower Division	1	1	20	3	20	60	4
Upper Division	7	6	18	19	118	353	24
Graduate Level	6	3	13	4	54	97	8
Food Science & Human Nutrition	13	18	39	45	736	2,052	137
Lower Division	3	10	52	24	516	1,446	96
Upper Division	6	6	30	18	187	547	36
Graduate Level	4	2	8	3	33	59	5
Molec Biosci/Biosys Engr	15	9	12	23	168	536	40

Lower Division	1	1	16		16	16	1
Upper Division	6	5	14	16	75	234	15
Graduate Level	8	3	8	7	77	286	24
Bioengineering	6	4	8	9	39	93	7
Lower Division	1	1	16		16	16	1
Upper Division	2	2	6	6	11	33	2
Graduate Level	3	1	4	3	12	44	4
Molecular Biosci & Bioengr	9	5	16	14	129	443	33
Upper Division	4	3	20	10	64	201	13
Graduate Level	5	2	10	4	65	242	20
Nat Res & Environ Mgmt	18	15	24	36	384	1,129	78
Lower Division	1	2	99	6	197	591	39
Upper Division	5	6	19	16	114	356	24
Graduate Level	12	7	8	14	73	182	15
Agricultural and Resource Econ	2				5	10	1
Graduate Level	2				5	10	1
Natural Res & Environmtl Mgt	16	15	24	36	379	1,119	77
Lower Division	1	2	99	6	197	591	39
Upper Division	5	6	19	16	114	356	24
Graduate Level	10	7	8	14	68	172	14
Plant & Environ Protectn Sci	15	11	15	21	198	501	38
Lower Division	1	1	29	3	29	87	6
Upper Division	5	4	13	10	58	188	13
Graduate Level	9	6	14	8	111	226	19
Plant & Environmtl Protect Sci	15	11	15	21	198	501	38
COURSE OFFERING	COURSES	CLASSES		SEMESTER HOURS	STUDENT REGIS	STUDENT SEM HRS	COURSE FTE
		No.	Avg Size				
Lower Division	1	1	29	3	29	87	6
Upper Division	5	4	13	10	58	188	13
Graduate Level	9	6	14	8	111	226	19
Trop Ag & Human Res, Interdisc	1				1		
Lower Division	1				1		
Trop Plant & Soil Sci	14	12	10	28	150	361	26
Lower Division	1	2	7	2	13	13	1
Upper Division	6	6	11	17	75	215	14
Graduate Level	7	4	9	9	62	133	11
Tropical Plant & Soil Sciences	14	12	10	28	150	361	26
Lower Division	1	2	7	2	13	13	1
Upper Division	6	6	11	17	75	215	14
Graduate Level	7	4	9	9	62	133	11
School of Medicine	181	193	15	410	3,061	11,320	896
Lower Division	4	9	50	13	449	928	61
Upper Division	22	23	25	63	594	1,854	124
Graduate Level	155	161	12	334	2,018	8,538	711
Allied Medical Sci	32	46	9	110	430	1,146	84
Lower Division	2	2	17	4	33	66	4
Upper Division	13	15	13	39	203	577	38
Graduate Level	17	29	7	67	194	503	42
Medical Technology	10	9	9	23	81	208	13
Lower Division	2	2	17	4	33	66	4
Upper Division	7	6	7	18	46	140	9
Graduate Level	1	1	2	1	2	2	
Speech Pathology & Audiology	22	37	9	87	349	938	71
Upper Division	6	9	17	21	157	437	29
Graduate Level	16	28	7	66	192	501	42
Anatomy, Biochem, Physl, Repr Bio	13	15	49	31	749	1,984	135

Lower Division	2	7	59	9	416	862	57
Upper Division	3	4	72	10	288	978	66
Graduate Level	8	4	8	12	45	144	12
Anatomy	2	1	11	3	13	40	3
Graduate Level	2	1	11	3	13	40	3
Biochemistry	2	1	126	4	127	510	35
Upper Division	1	1	126	4	126	504	34
Graduate Level	1				1	6	1
Physiology	9	13	46	24	609	1,434	97
Lower Division	2	7	59	9	416	862	57
Upper Division	2	3	54	6	162	474	32
Graduate Level	5	3	7	9	31	98	8
Biomedical Science	27	23	36	68	853	3,601	298
Upper Division	4	3	9	11	31	110	7
Graduate Level	23	20	40	57	822	3,491	291
Cell and Molecular Biology	13	15	7	28	144	409	31
Upper Division	2	1	50	3	72	189	13
Graduate Level	11	14	4	25	72	220	18
Family Practice & Comm Health	5	5	9	20	46	412	34
Graduate Level	5	5	9	20	46	412	34
Geriatric Medicine	1	1	1		1	6	1
COURSE OFFERING	COURSES	CLASSES		SEMESTER HOURS	STUDENT REGIS	STUDENT SEM HRS	COURSE FTE
		No.	Avg Size				
Graduate Level	1	1	1		1	6	1
Medicine	18	18	6	21	108	855	71
Graduate Level	18	18	6	21	108	855	71
Native Hawaiian Health	1	1	2		2	10	1
Graduate Level	1	1	2		2	10	1
Obstetrics & Gynecology	5	5	11	15	53	396	33
Graduate Level	5	5	11	15	53	396	33
Pathology	8	7	19	1	137	215	18
Graduate Level	8	7	19	1	137	215	18
Pediatrics	9	9	6	15	55	424	35
Graduate Level	9	9	6	15	55	424	35
Psychiatry	5	5	10	15	50	384	32
Graduate Level	5	5	10	15	50	384	32
Public Health	21	21	9	53	206	543	45
Graduate Level	21	21	9	53	206	543	45
Surgery	15	15	10	21	149	817	68
Graduate Level	15	15	10	21	149	817	68
Trop Med, Med Micr & Pharmacology	8	7	9	12	78	118	10
Graduate Level	8	7	9	12	78	118	10
Tropical Med & Medcl Micro	7	6	5	11	43	83	7
Graduate Level	7	6	5	11	43	83	7
Pharmacology	1	1	35	1	35	35	3
Graduate Level	1	1	35	1	35	35	3
School of Nursing & Dental Hygiene	71	134	12	274	1,664	3,853	266
Lower Division	7	19	8	21	147	189	13
Upper Division	42	86	15	190	1,321	3,158	211
Graduate Level	22	29	6	63	196	506	42
Dental Hygiene	21	51	8	59	405	561	38
Lower Division	7	19	8	21	147	189	13
Upper Division	14	32	8	38	258	372	25
Nursing	50	83	15	215	1,259	3,292	228
Upper Division	28	54	20	152	1,063	2,786	186
Graduate Level	22	29	6	63	196	506	42

School of Social Work	33	51	18	125	927	2,813	227
Lower Division	1	1	38	3	38	114	8
Upper Division	7	7	17	23	122	384	26
Graduate Level	25	43	18	99	767	2,315	193
Social Work	33	51	18	125	927	2,813	227
Lower Division	1	1	38	3	38	114	8
Upper Division	7	7	17	23	122	384	26
Graduate Level	25	43	18	99	767	2,315	193
School of Law	54	77	21	196	1,645	4,464	372
Graduate Level	54	77	21	196	1,645	4,464	372
Law	54	77	21	196	1,645	4,464	372
Graduate Level	54	77	21	196	1,645	4,464	372
Military Studies	11			43	142	326	22
Lower Division	6			15	83	120	8
Upper Division	5			28	59	206	14
Aerospace Studies	4			15	67	123	9
Lower Division	2			6	49	69	5
COURSE OFFERING	COURSES	CLASSES		SEMESTER HOURS	STUDENT REGIS	STUDENT SEM HRS	COURSE FTE
		No.	Avg Size				
Upper Division	2			9	18	54	4
Military Science	7			28	75	203	13
Lower Division	4			9	34	51	3
Upper Division	3			19	41	152	10

1/ Number of classes excludes classes numbered -99 (Individual Instruction), 700 (Thesis Research), and 800 (Dissertation Research). Also excludes Aerospace Studies and Military Science classes.

2/ Languages and Literatures of Europe and the Americas formerly called European Languages and Literature; name change effective Fall 2000.

3/ Second Language Studies formerly called English as a Second Language; name change effective July 2000.

4/ Departments of Communication and Journalism were merged under the School of Communications as of June 2000.

5/ Ocean and Resources Engineering formerly called Ocean Engineering; name change effective Spring 2000.

6/ Information Technology Management formerly called Decision Sciences; name change effective Fall 2000.

7/ In Fall 2002, the Department of Teacher Education and Curriculum Studies (TECS) was reorganized into two new units: The Institute for Teacher Education (ITE) and Curriculum Studies (EDCS). New course alphas, EDCS and ITE, were added in Fall 2003.

8/ Civil and Environmental Engineering formerly called Civil Engineering; name change effective Fall 2002.

9/ College of Trop Ag & Hum Resources was reorganized in 1999-2000.

10/ Apparel, Product, Design & Merchandising formerly called Textiles and Clothing; name change effective Fall 2001.

11/ School of Public Health was consolidated into School of Medicine effective Fall 2000.

12/ The departments of Anatomy and Reproductive Biology, Biochemistry and Biophysics, and Physiology were merged into the Department of Anatomy, Biochemistry, Physiology and Reproductive Biology effective November 2003.

13/ Cell and Molecular Biology formerly called Genetics and Molecular Biology; name change effective Spring 2001.

14/ The departments of Tropical Medicine, Medical Microbiology and Pharmacology were merged into the Department of Tropical Medicine, Medical Microbiology and Pharmacology effective November 2003.

15/ School of Nursing and Dental Hygiene formerly called School of Nursing; name change effective July 2000.

SERIES: Course Registration Report

SOURCE: Banner Operational Data Store (ODS), IRO_SOCAD, IRO_SOCEX

University of Hawai'i, Institutional Research Office

Table 2
Course Registration Summary, By Course Level
 University of Hawai'i at Manoa
 Spring 2005

Course Level	COURSES	CLASSES	SEMESTER HOURS	STUDENT REGIS	STUDENT SEM HRS
Spring 2005	2,640	5,074	10,014	77,194	220,471
000-099	10	31	81	318	1,149
100-199	210	662	1,588	22,117	58,497
200-299	248	482	1,260	11,859	33,862
300-399	588	966	2,497	18,344	53,666
400-499	571	871	1,982	11,218	32,358
500-599	182	206	447	3,267	12,017
600-800	831	1,856	2,159	10,071	28,922

1/ Number of classes includes courses numbered -99 (Individual Instruction), 700 (Thesis Research), and 800 (Dissertation Research).

SERIES: Course Registration Report

SOURCE: Banner Operational Data Store (ODS), IRO_SOCAD, IRO_SOCEX

University of Hawai'i, Institutional Research Office

© 2005-2008 University of Hawai'i

Table 3
Student Semester Hours (SSH) and Course FTE
 University of Hawai'i at Manoa
 Spring 2005

College and Level	Spring 2005		COURSE FTE
	SSH No.	%Chg	
TOTAL	220,471		15,379
Lower Division	93,508		6,234
Upper Division	86,024		5,735
Graduate Level	40,939		3,410
College of Arts & Sciences	132,138		9,010
Lower Division	74,318		4,955
Upper Division	45,670		3,043
Graduate Level	12,150		1,012
Arts & Humanities	29,798		2,020
Lower Division	16,458		1,097
Upper Division	11,328		756
Graduate Level	2,012		167
Lang, Ling & Lit	34,419		2,332
Lower Division	20,888		1,393
Upper Division	11,224		748
Graduate Level	2,307		191
Natural Sciences	28,945		1,981
Lower Division	20,531		1,369
Upper Division	5,296		352
Graduate Level	3,118		260
Social Sciences	37,876		2,602
Lower Division	16,170		1,078
Upper Division	17,127		1,141
Graduate Level	4,579		383
Other Arts & Sciences	1,100		75
Lower Division	271		18
Upper Division	695		46
Graduate Level	134		11
School of Hawn, Asian, Pac St	5,778		393
Lower Division	3,819		255
Upper Division	1,511		101
Graduate Level	448		37
School of Ocean Earth Sci Tech	3,606		261
Lower Division	1,773		118
Upper Division	539		35
Graduate Level	1,294		108
School of Architecture	2,197		154
Lower Division	741		49
Upper Division	1,002		67
Graduate Level	454		38
College of Business Admin	16,605		1,172
Lower Division	2,648		177
Upper Division	10,208		681
Graduate Level	3,749		314
School of Travel Ind Mgt	3,002		203
Lower Division	657		44
Upper Division	2,198		147
Graduate Level	147		12

College of Education	18,291		1,303
Lower Division	2,471		165
Upper Division	10,772		718
Graduate Level	5,048		420
College of Engineering	5,296		366
Lower Division	1,550		103
Upper Division	2,906		194
Graduate Level	840		69
College of Trop Ag & Hum Res	10,782		734
Lower Division	4,180		278
Upper Division	5,616		374
Graduate Level	986		82
School of Medicine	11,320		896
Lower Division	928		61
Upper Division	1,854		124
Graduate Level	8,538		711
School of Nursing & Dental Hygiene	3,853		266
Lower Division	189		13
Upper Division	3,158		211
Graduate Level	506		42
School of Social Work	2,813		227
Lower Division	114		8
Upper Division	384		26
Graduate Level	2,315		193
School of Law	4,464		372
Graduate Level	4,464		372
Military Studies	326		22
Lower Division	120		8
Upper Division	206		14

1/ Percent change between -.49 and 0 is noted as (<1). Percent change between -.9 and -.5 is rounded to -1.

2/ School of Public Health was consolidated into School of Medicine effective Fall 2000.

3/ School of Nursing and Dental Hygiene formerly called School of Nursing; name change effective July 2000.

SERIES: Course Registration Report

SOURCE: Banner Operational Data Store (ODS), IRO_SOCAD

University of Hawai'i, Institutional Research Office

© 2005-2008 University of Hawai'i

Table 4
Number of Classes and Average Class Size
 University of Hawai'i at Manoa
 Spring 2005

College and Level	Spring 2005		Avg Size
	Classes		
	No.	%Chg	
TOTAL	3,760		20
Lower Division	1,158		30
Upper Division	1,554		19
Graduate Level	1,048		11
College of Arts & Sciences	2,159		21
Lower Division	911		29
Upper Division	837		19
Graduate Level	411		8
Arts & Humanities	505		21
Lower Division	195		30
Upper Division	219		20
Graduate Level	91		6
Lang, Ling & Lit	718		15
Lower Division	373		17
Upper Division	264		14
Graduate Level	81		8
Natural Sciences	422		26
Lower Division	233		35
Upper Division	112		16
Graduate Level	77		10
Social Sciences	478		25
Lower Division	97		56
Upper Division	222		25
Graduate Level	159		7
Other Arts & Sciences	36		11
Lower Division	13		10
Upper Division	20		10
Graduate Level	3		23
School of Hawn, Asian, Pac St	83		22
Lower Division	40		30
Upper Division	28		18
Graduate Level	15		7
School of Ocean Earth Sci Tech	77		14
Lower Division	25		28
Upper Division	16		10
Graduate Level	36		6
School of Architecture	32		20
Lower Division	11		25
Upper Division	13		22
Graduate Level	8		10
College of Business Admin	194		28
Lower Division	19		46
Upper Division	121		28
Graduate Level	54		23
School of Travel Ind Mgt	33		33
Lower Division	4		67
Upper Division	25		31
Graduate Level	4		12

College of Education	447		15
Lower Division	66		32
Upper Division	229		14
Graduate Level	152		10
College of Engineering	132		14
Lower Division	23		24
Upper Division	76		14
Graduate Level	33		6
College of Trop Ag & Hum Res	148		24
Lower Division	30		48
Upper Division	93		20
Graduate Level	25		10
School of Medicine	193		15
Lower Division	9		50
Upper Division	23		25
Graduate Level	161		12
School of Nursing & Dental Hygiene	134		12
Lower Division	19		8
Upper Division	86		15
Graduate Level	29		6
School of Social Work	51		18
Lower Division	1		38
Upper Division	7		17
Graduate Level	43		18
School of Law	77		21
Graduate Level	77		21

1/ Excludes courses numbered -99 (Individual Instruction), 700 (Thesis Research) and 800 (Dissertation Research). Also excludes Aerospace Studies and Military Science courses.

2/ Percent change between -.49 and 0 is noted as (<1). Percent change between -.9 and -.5 is rounded to -1.

3/ School of Public Health was consolidated into School of Medicine effective Fall 2000.

4/ School of Nursing and Dental Hygiene formerly called School of Nursing; name change effective July 2000.

SERIES: Course Registration Report

SOURCE: Banner Operational Data Store (ODS), IRO_SOCAD

University of Hawai'i, Institutional Research Office

© 2005-2008 University of Hawai'i