

**COURSE REGISTRATION REPORT**

**UNIVERSITY OF HAWAI'I, MANOA**

**SPRING 1999**

Institutional Research Office  
University of Hawai'i  
March 1999

File Reference: Management and Planning Support Folder, Courses

Reports now available online at: <http://www.hawaii.edu/iro/maps.htm>

# University of Hawai'i at Manoa - Spring Semesters

Figure 1  
Total Number of Classes

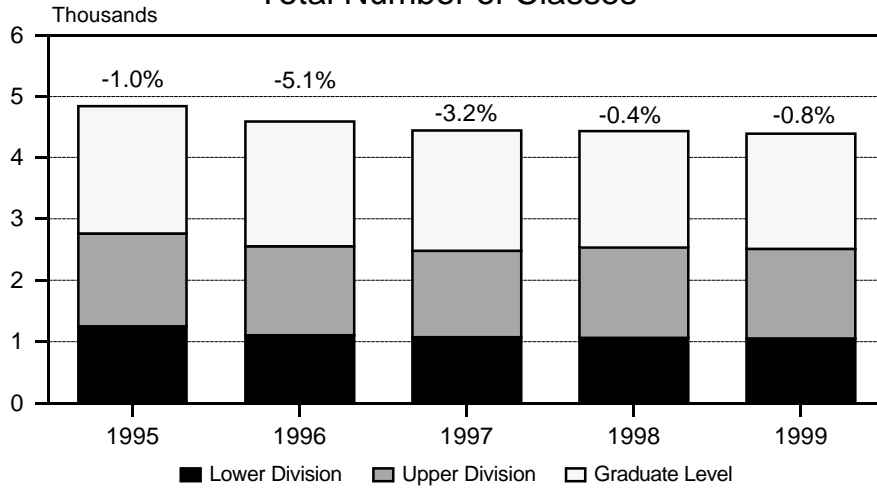


Figure 2  
Student Registrations

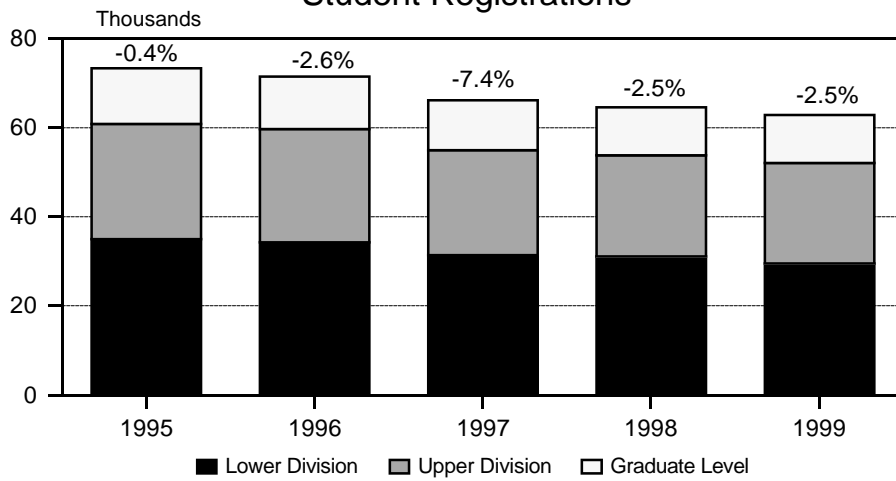


Figure 3  
Student Semester Hours (SSH)

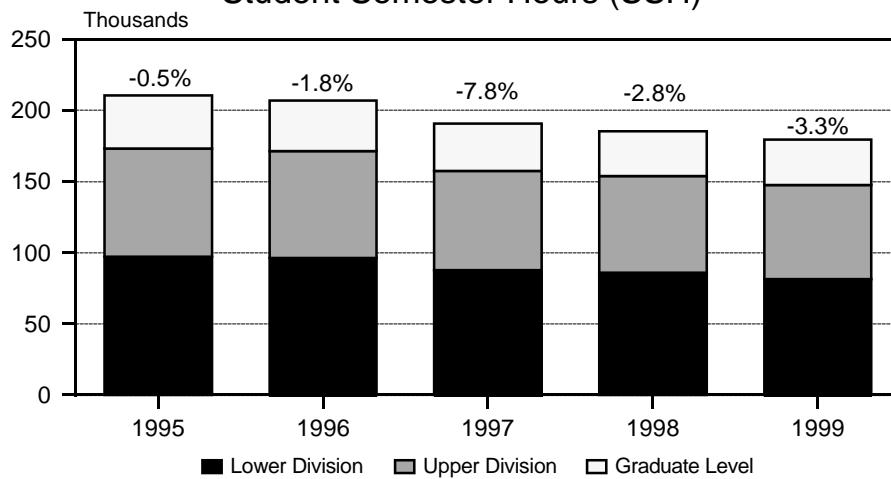


Figure 4  
Course FTE

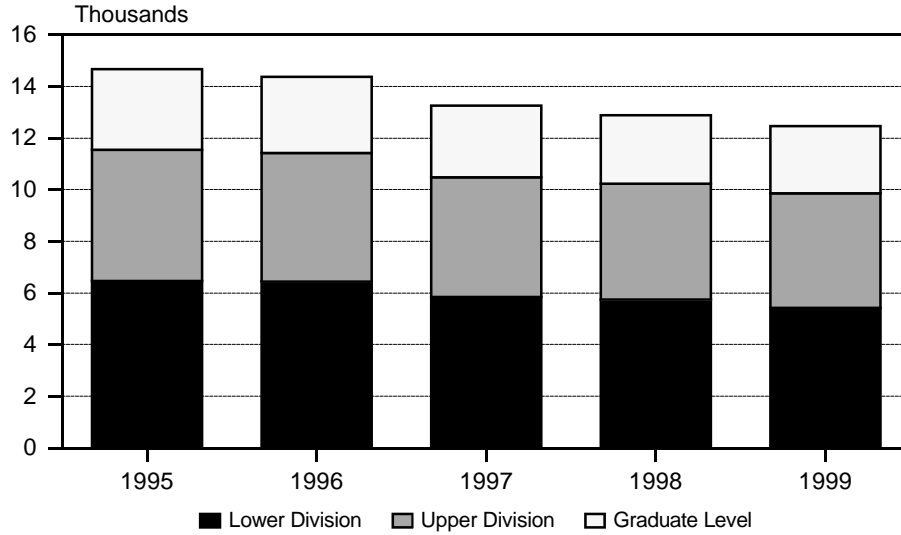


Figure 5  
Course FTE, by College

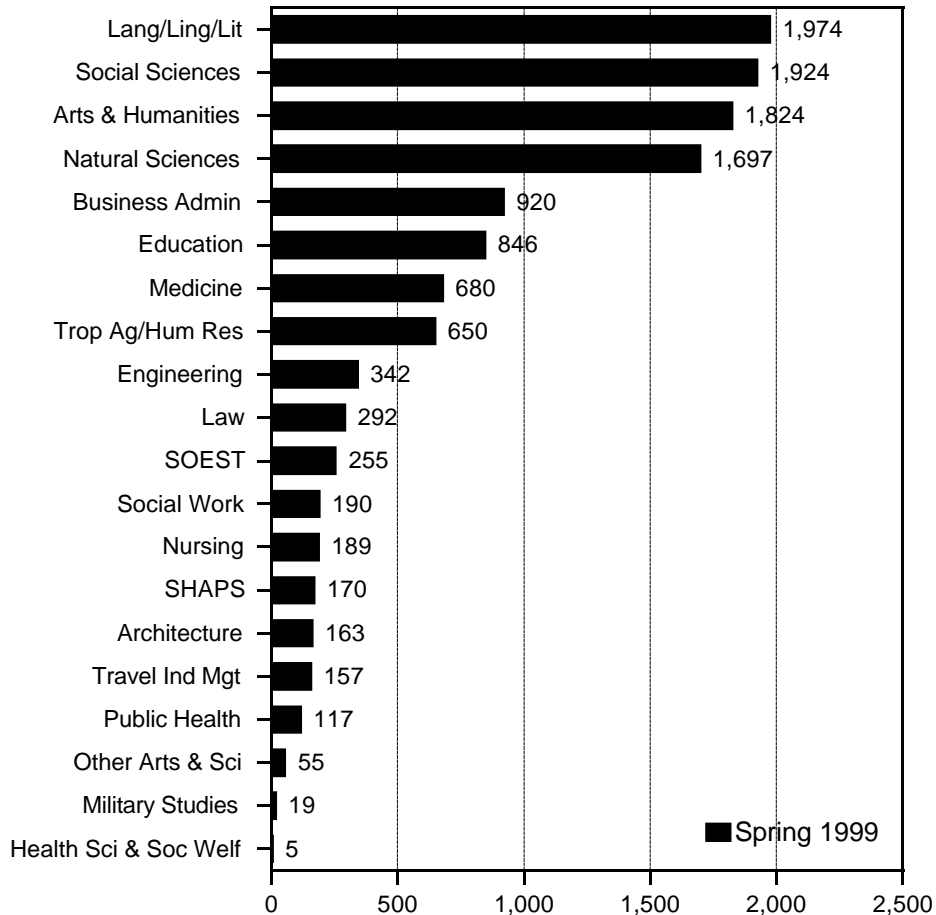


Figure 6  
Average Class Size

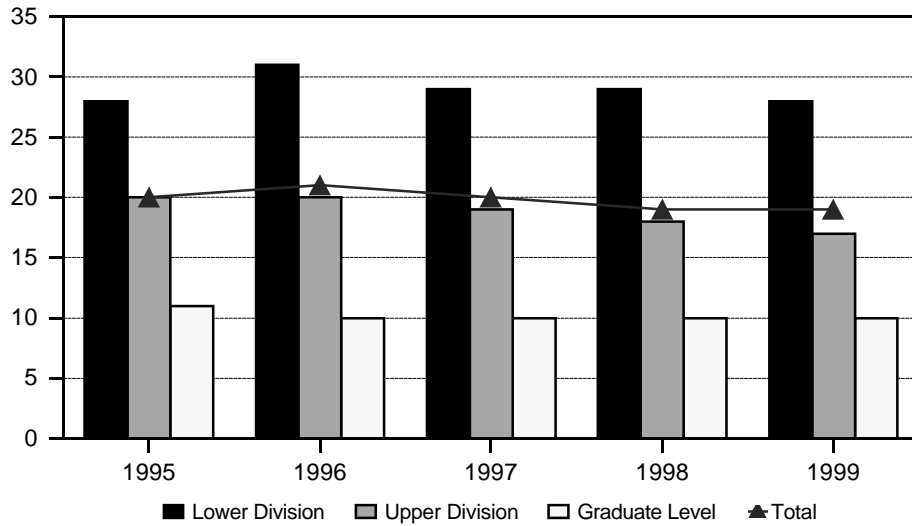


Figure 7  
Average Class Size, by College

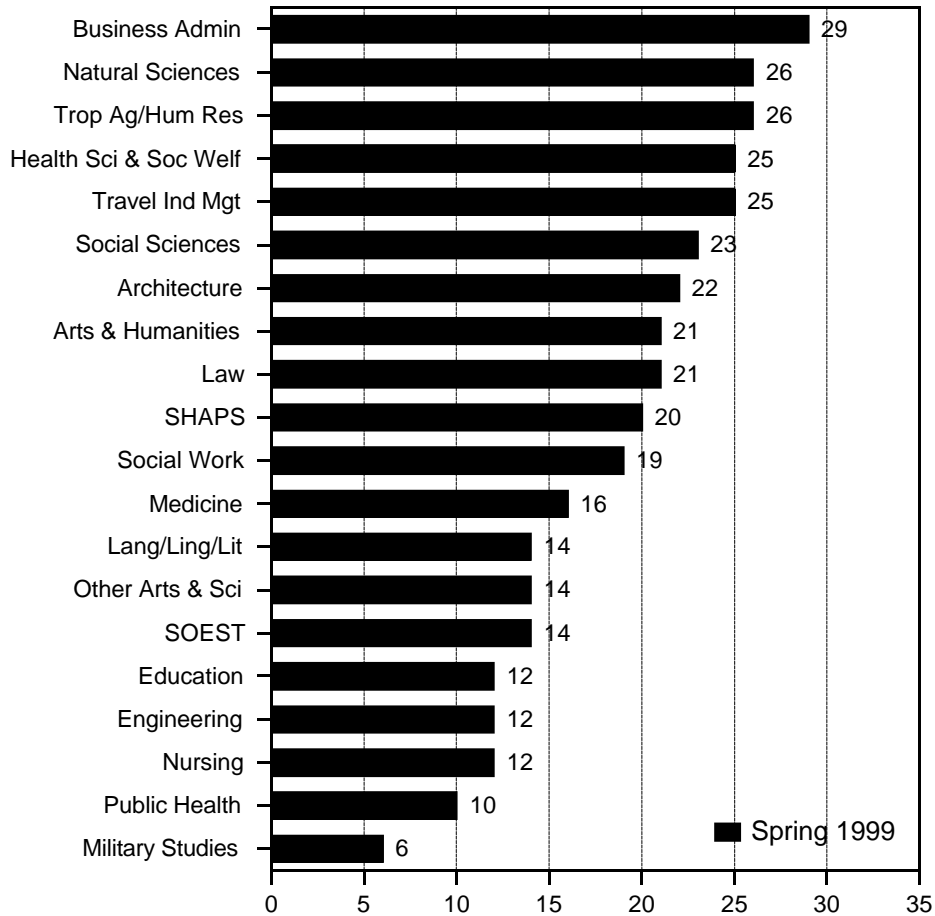


TABLE 1  
 COURSE REGISTRATION AND AVERAGE CLASS SIZE  
 UNIVERSITY OF HAWAI'I AT MANOA  
 SPRING 1999

COURSE OFFERING	COURSES	CLASSES 1/		SEMESTER HOURS	STUDENT REGIS	STUDENT SEM HRS	COURSE FTE
		No.	Avg Size				
TOTAL .....	2,321	3,200	19	8,672	62,874	179,219	12,469
Lower Division .....	406	1,045	28	2,701	29,590	81,435	5,428
Upper Division .....	984	1,259	17	3,714	22,534	66,321	4,423
Graduate Level .....	931	896	10	2,257	10,750	31,463	2,618
COLLEGE OF ARTS & SCIENCES...	1,284	1,861	20	4,924	39,168	109,789	7,474
Lower Division .....	297	852	28	2,296	23,835	66,942	4,464
Upper Division .....	584	654	18	1,756	11,977	33,851	2,257
Graduate Level .....	403	355	7	872	3,356	8,996	753
Arts and Humanities .....	371	457	21	1,046	9,959	26,913	1,824
Lower Division .....	97	180	31	426	5,738	16,172	1,079
Upper Division .....	183	200	18	468	3,556	9,058	604
Graduate Level .....	91	77	6	152	665	1,683	141
American Studies .....	24	29	19	85	607	1,756	122
Lower Division .....	4	13	26	39	334	1,002	67
Upper Division .....	9	8	20	24	161	483	32
Graduate Level .....	11	8	8	22	112	271	23
Art .....	82	101	16	256	1,699	5,054	341
Lower Division .....	31	53	21	151	1,109	3,273	218
Upper Division .....	35	34	15	99	520	1,542	103
Graduate Level .....	16	14	3	6	70	239	20
Dance .....	29	27	11	54	299	728	50
Lower Division .....	5	6	21	18	128	384	26
Upper Division .....	18	17	9	31	153	310	21
Graduate Level .....	6	4	3	5	18	34	3
History .....	55	58	44	174	2,627	7,803	525
Lower Division .....	9	16	111	48	1,769	5,307	354
Upper Division .....	32	31	24	93	741	2,222	148
Graduate Level .....	14	11	6	33	117	274	23
Music .....	80	115	14	128	1,743	2,738	185
Lower Division .....	26	48	13	46	687	1,060	71
Upper Division .....	41	57	17	62	985	1,530	102
Graduate Level .....	13	10	5	20	71	148	12
Philosophy .....	25	29	21	87	633	1,844	127
Lower Division .....	5	11	35	33	383	1,149	77
Upper Division .....	11	11	14	33	159	477	32
Graduate Level .....	9	7	8	21	91	218	18
Religion .....	19	20	41	63	837	2,496	168
Lower Division .....	5	8	88	24	703	2,109	141
Upper Division .....	7	6	16	21	97	291	19
Graduate Level .....	7	6	5	18	37	96	8
Speech .....	23	34	23	105	773	2,419	163
Lower Division .....	3	9	24	27	212	727	48
Upper Division .....	14	21	24	66	516	1,561	104
Graduate Level .....	6	4	11	12	45	131	11

TABLE 1 (cont.)

COURSE OFFERING	COURSES	CLASSES 1/		SEMESTER HOURS	STUDENT REGIS	STUDENT SEM HRS	COURSE FTE
		No.	Avg Size				
Theatre .....	34	44	16	94	741	2,075	143
Lower Division .....	9	16	26	40	413	1,161	77
Upper Division .....	16	15	14	39	224	642	43
Graduate Level .....	9	13	6	15	104	272	23
Languages, Ling and Lit .....	332	611	14	1,987	8,939	29,106	1,974
Lower Division .....	88	350	17	1,221	5,822	19,946	1,329
Upper Division .....	152	180	13	541	2,395	7,212	482
Graduate Level .....	92	81	7	225	722	1,948	163
East Asian Lang & Lit .....	82	134	12	481	1,705	6,003	405
Lower Division .....	17	72	15	279	1,065	4,070	270
Upper Division .....	41	44	11	137	506	1,605	107
Graduate Level .....	24	18	5	65	134	328	28
Chinese Lang & Lit .....	23	29	9	101	282	1,028	69
Lower Division .....	4	10	12	44	119	516	34
Upper Division .....	12	13	11	39	142	453	30
Graduate Level .....	7	6	3	18	21	59	5
East Asian Lang & Lit .....	13	13	14	50	211	585	40
Lower Division .....	3	6	21	18	127	381	25
Upper Division .....	5	5	9	15	46	138	9
Graduate Level .....	5	2	6	17	38	66	6
Japanese Lang & Lit .....	35	82	13	296	1,085	3,942	266
Lower Division .....	6	52	14	201	750	2,897	193
Upper Division .....	19	21	12	68	269	867	58
Graduate Level .....	10	9	6	27	66	178	15
Korean Lang & Lit .....	11	10	12	34	127	448	30
Lower Division .....	4	4	17	16	69	276	18
Upper Division .....	5	5	10	15	49	147	10
Graduate Level .....	2	1	5	3	9	25	2
English .....	75	175	16	502	2,754	8,251	556
Lower Division .....	15	94	18	282	1,701	5,118	341
Upper Division .....	41	59	15	177	911	2,732	182
Graduate Level .....	19	22	5	43	142	401	33
English as a Second Lang .....	29	41	13	121	561	1,649	120
Lower Division .....	7	16	14	48	224	672	45
Upper Division .....	7	7	17	21	117	351	23
Graduate Level .....	15	18	11	52	220	626	52
Eng as a Second Lang .....	23	28	13	82	377	1,097	83
Lower Division .....	1	3	13	9	40	120	8
Upper Division .....	7	7	17	21	117	351	23
Graduate Level .....	15	18	11	52	220	626	52
Eng Lang Institute .....	6	13	14	39	184	552	37
Lower Division .....	6	13	14	39	184	552	37
European Lang & Lit .....	61	115	15	378	1,694	5,616	379
Lower Division .....	22	79	16	272	1,233	4,240	283
Upper Division .....	26	29	13	87	392	1,174	78
Graduate Level .....	13	7	8	19	69	202	18

TABLE 1 (cont.)

COURSE OFFERING	COURSES	CLASSES 1/		SEMESTER HOURS	STUDENT REGIS	STUDENT SEM HRS	COURSE FTE
		No.	Avg Size				
European Language .....	10	8	18	22	157	466	32
Lower Division .....	1	1	22	3	22	66	4
Upper Division .....	5	5	21	15	111	331	22
Graduate Level .....	4	2	11	4	24	69	6
French .....	15	28	14	93	384	1,288	88
Lower Division .....	4	17	16	60	267	939	63
Upper Division .....	8	9	10	27	94	282	19
Graduate Level .....	3	2	10	6	23	67	6
German .....	8	10	10	34	100	346	24
Lower Division .....	5	8	11	28	89	313	21
Upper Division .....	1	1	5	3	5	15	1
Graduate Level .....	2	1	5	3	6	18	2
Greek .....	3	2	10	6	21	63	4
Lower Division .....	2	2	10	6	20	60	4
Graduate Level .....	1	0	0	0	1	3	0
Italian .....	2	2	12	7	23	81	5
Lower Division .....	2	2	12	7	23	81	5
Latin .....	3	8	14	24	111	333	23
Lower Division .....	2	7	16	21	109	327	22
Graduate Level .....	1	1	2	3	2	6	1
Russian .....	5	5	7	17	33	120	8
Lower Division .....	2	2	11	8	21	84	6
Upper Division .....	3	3	4	9	12	36	2
Spanish .....	15	52	17	175	865	2,919	195
Lower Division .....	4	40	17	139	682	2,370	158
Upper Division .....	9	11	15	33	170	510	34
Graduate Level .....	2	1	8	3	13	39	3
Hawn & Indo-Pacific Lang & Li 2/ ..	58	113	13	410	1,500	5,532	371
Lower Division .....	26	77	14	304	1,120	4,409	294
Upper Division .....	31	36	10	106	377	1,108	76
Graduate Level .....	1	0	0	0	3	15	1
Burmese .....	1	1	1	4	1	4	0
Lower Division .....	1	1	1	4	1	4	0
Cambodian .....	2	2	3	8	6	24	2
Lower Division .....	2	2	3	8	6	24	2
Hawaiian .....	16	57	15	208	860	3,186	212
Lower Division .....	4	39	16	156	630	2,520	168
Upper Division .....	12	18	12	52	230	666	44
Hindi .....	1	1	5	4	5	20	1
Lower Division .....	1	1	5	4	5	20	1
Ilokano .....	5	11	14	41	149	560	37
Lower Division .....	2	8	14	32	113	452	30
Upper Division .....	3	3	12	9	36	108	7

TABLE 1 (cont.)

COURSE OFFERING	COURSES	CLASSES 1/		SEMESTER HOURS	STUDENT REGIS	STUDENT SEM HRS	COURSE FTE
		No.	Avg Size				
Indo-Pacific Lang .....	6	3	23	9	82	251	17
Lower Division .....	3	2	26	6	55	163	11
Upper Division .....	2	1	19	3	24	73	5
Graduate Level .....	1	0	0	0	3	15	1
Indonesian .....	3	3	7	10	20	71	5
Lower Division .....	1	1	11	4	11	44	3
Upper Division .....	2	2	5	6	9	27	2
Samoan .....	5	9	15	33	135	512	35
Lower Division .....	2	6	18	24	107	428	29
Upper Division .....	3	3	9	9	28	84	6
Sanskrit .....	4	4	4	12	17	51	4
Lower Division .....	2	2	7	6	14	42	3
Upper Division .....	2	2	2	6	3	9	1
Tagalog .....	5	12	13	45	152	580	39
Lower Division .....	2	9	14	36	124	496	33
Upper Division .....	3	3	9	9	28	84	6
Tahitian .....	3	3	6	11	17	65	5
Lower Division .....	2	2	7	8	14	56	4
Upper Division .....	1	1	3	3	3	9	1
Thai .....	3	3	5	11	15	57	4
Lower Division .....	2	2	6	8	12	48	3
Upper Division .....	1	1	3	3	3	9	1
Vietnamese .....	4	4	10	14	41	151	10
Lower Division .....	2	2	14	8	28	112	7
Upper Division .....	2	2	7	6	13	39	3
Interp & Translation .....	3	2	15	4	35	71	5
Upper Division .....	3	2	15	4	35	71	5
Linguistics .....	22	31	20	91	681	1,968	137
Lower Division .....	1	12	40	36	479	1,437	96
Upper Division .....	3	3	19	9	57	171	11
Graduate Level .....	18	16	6	46	145	360	30
Second Language Acquisition .....	2	0	0	0	9	16	1
Graduate Level .....	2	0	0	0	9	16	1
Natural Sciences .....	230	382	26	748	10,395	24,910	1,697
Lower Division .....	64	221	36	373	8,014	18,513	1,234
Upper Division .....	82	89	17	235	1,631	4,290	286
Graduate Level .....	84	72	7	140	750	2,107	177
Biology Program .....	13	44	39	60	1,724	3,713	248
Lower Division .....	6	39	40	45	1,562	3,278	219
Upper Division .....	7	5	29	15	162	435	29
Botany/Botanical Sci .....	24	33	14	74	516	1,298	91
Lower Division .....	5	9	21	14	186	384	26
Upper Division .....	10	17	14	48	255	714	48
Graduate Level .....	9	7	6	12	75	200	17



TABLE 1 (cont.)

COURSE OFFERING	COURSES	CLASSES 1/		SEMESTER HOURS	STUDENT REGIS	STUDENT SEM HRS	COURSE FTE
		No.	Avg Size				
Botany .....	22	33	14	74	504	1,276	89
Lower Division .....	5	9	21	14	186	384	26
Upper Division .....	10	17	14	48	255	714	48
Graduate Level .....	7	7	6	12	63	178	15
Botanical Science .....	2	0	0	0	12	22	2
Graduate Level .....	2	0	0	0	12	22	2
Chemistry .....	28	63	29	91	1,875	4,156	281
Lower Division .....	14	52	68	70	1,746	3,803	254
Upper Division .....	4	4	13	10	64	160	11
Graduate Level .....	10	7	6	11	65	193	16
Information & Comp Sci .....	42	66	33	144	2,247	5,340	369
Lower Division .....	7	31	50	51	1,537	3,321	221
Upper Division .....	12	12	33	34	427	1,192	79
Graduate Level .....	23	23	11	59	283	827	69
Information & Comp Sci .....	27	52	39	108	2,080	4,846	328
Lower Division .....	7	31	50	51	1,537	3,321	221
Upper Division .....	12	12	33	34	427	1,192	79
Graduate Level .....	8	9	11	23	116	333	28
Library & Information St 3/ .....	15	14	11	36	167	494	41
Lower Division .....							
Upper Division .....							
Graduate Level .....	15	14	11	36	167	494	41
Mathematics .....	32	59	24	164	1,405	4,078	273
Lower Division .....	11	38	31	101	1,173	3,394	226
Upper Division .....	15	17	12	51	202	606	40
Graduate Level .....	6	4	4	12	30	78	7
Microbiology .....	18	22	19	42	450	1,147	79
Lower Division .....	2	6	35	13	211	545	36
Upper Division .....	9	9	19	22	170	440	29
Graduate Level .....	7	7	6	7	69	162	14
Physics & Astronomy .....	43	65	25	127	1,653	4,058	274
Lower Division .....	17	43	35	75	1,515	3,655	243
Upper Division .....	10	9	6	26	51	148	10
Graduate Level .....	16	13	4	26	87	255	21
Astronomy .....	9	10	36	24	377	1,107	75
Lower Division .....	3	6	55	18	332	996	66
Graduate Level .....	6	4	6	6	45	111	9
Physics .....	34	55	23	103	1,276	2,951	199
Lower Division .....	14	37	32	57	1,183	2,659	177
Upper Division .....	10	9	6	26	51	148	10
Graduate Level .....	10	9	3	20	42	144	12
Zoology .....	30	30	14	46	525	1,120	82
Lower Division .....	2	3	28	4	84	133	9
Upper Division .....	15	16	18	29	300	595	40
Graduate Level .....	13	11	5	13	141	392	33

TABLE 1 (cont.)

COURSE OFFERING	COURSES	CLASSES 1/		SEMESTER HOURS	STUDENT REGIS	STUDENT SEM HRS	COURSE FTE
		No.	Avg Size				
Social Sciences .....	327	384	23	1,083	9,492	28,043	1,924
Lower Division .....	41	91	45	257	4,056	11,964	799
Upper Division .....	156	172	24	478	4,268	12,914	860
Graduate Level .....	130	121	7	348	1,168	3,165	265
Anthropology .....	31	31	15	85	532	1,475	103
Lower Division .....	5	9	26	23	234	670	45
Upper Division .....	14	13	14	37	183	529	35
Graduate Level .....	12	9	7	25	115	276	23
Communication .....	28	28	26	78	776	2,306	160
Lower Division .....	1	1	138	3	138	414	28
Upper Division .....	16	18	27	51	517	1,542	103
Graduate Level .....	11	9	11	24	121	350	29
Economics .....	28	31	41	91	1,279	3,797	258
Lower Division .....	3	7	119	21	831	2,493	166
Upper Division .....	13	14	24	42	332	996	66
Graduate Level .....	12	10	9	28	116	308	26
Ethnic Studies .....	18	25	23	54	597	1,800	120
Lower Division .....	3	5	43	15	215	645	43
Upper Division .....	15	20	18	39	382	1,155	77
Geography .....	30	35	25	90	931	2,580	176
Lower Division .....	5	14	28	30	386	986	66
Upper Division .....	17	16	28	45	457	1,372	91
Graduate Level .....	8	5	7	15	88	222	19
Journalism .....	14	17	23	51	394	1,180	79
Lower Division .....	3	6	27	18	163	489	33
Upper Division .....	11	11	21	33	231	691	46
Political Science .....	49	63	13	189	947	2,796	195
Lower Division .....	5	17	12	51	199	597	40
Upper Division .....	23	27	19	83	543	1,695	113
Graduate Level .....	21	19	6	55	205	504	42
Population Studies .....	3	2	3	6	7	19	1
Upper Division .....	1	1	2	3	2	6	0
Graduate Level .....	2	1	4	3	5	13	1
Psychology .....	51	72	28	200	2,186	6,528	445
Lower Division .....	8	11	118	33	1,299	3,897	260
Upper Division .....	14	23	25	60	669	2,045	136
Graduate Level .....	29	38	4	107	218	586	49
Public Administration .....	9	9	8	27	76	278	36
Graduate Level .....	9	9	8	27	76	278	23
Social Science .....	1	4	16	12	64	192	13
Lower Division .....	1	4	16	12	64	192	13
Sociology .....	41	46	28	136	1,364	4,100	278
Lower Division .....	5	14	34	42	470	1,410	94
Upper Division .....	24	23	34	67	801	2,429	162
Graduate Level .....	12	9	6	27	93	261	22

TABLE 1 (cont.)

COURSE OFFERING	COURSES	CLASSES 1/		SEMESTER HOURS	STUDENT REGIS	STUDENT SEM HRS	COURSE FTE
		No.	Avg Size				
Urban & Regional Plan .....	15	12	10	37	134	376	32
Upper Division .....	1	0	0	0	3	9	1
Graduate Level .....	14	12	10	37	131	367	31
Women's Studies .....	9	9	23	27	205	616	41
Lower Division .....	2	3	19	9	57	171	11
Upper Division .....	7	6	25	18	148	445	30
Other Arts & Sciences .....	24	27	14	60	383	817	55
Lower Division .....	7	10	21	19	205	347	23
Upper Division .....	11	13	10	34	127	377	25
Graduate Level .....	6	4	12	7	51	93	7
Coll of Arts & Sci (CAS) .....	8	10	13	28	126	308	20
Lower Division .....	4	5	20	13	99	227	15
Upper Division .....	4	5	5	15	27	81	5
Communication & Info Sci .....	4	2	18	4	40	65	5
Graduate Level .....	4	2	18	4	40	65	5
Honors & Sel Studies .....	6	7	14	19	95	281	19
Lower Division .....	1	1	6	3	6	18	1
Upper Division .....	6	7	14	19	95	281	19
Interdisc Studies .....	5	7	17	6	116	145	8
Lower Division .....	2	4	25	3	100	102	7
Upper Division .....	1	1	5		5	15	1
Graduate Level .....	2	2	6	3	11	28	2
SCH OF HAWN, ASIAN, PAC ST .....	39	39	20	113	827	2,441	170
Lower Division .....	9	14	29	40	409	1,179	79
Upper Division .....	15	14	20	42	289	865	57
Graduate Level .....	15	11	7	31	129	397	34
Asian Studies Prog .....	20	18	15	54	288	868	62
Lower Division .....	2	2	38	6	75	225	15
Upper Division .....	8	8	17	24	132	396	26
Graduate Level .....	10	8	7	24	81	247	21
Hawaiian Studies .....	13	17	28	49	482	1,396	93
Lower Division .....	7	12	28	34	334	954	64
Upper Division .....	6	5	28	15	148	442	29
Pacific Island Stud .....	6	4	9	10	57	177	15
Upper Division .....	1	1	9	3	9	27	2
Graduate Level .....	5	3	9	7	48	150	13
SCH OCEAN EARTH SCI TECH .....	77	82	14	212	1,252	3,575	255
Lower Division .....	12	28	28	63	797	2,096	138
Upper Division .....	16	14	8	46	110	372	25
Graduate Level .....	49	40	5	103	345	1,107	92
Geology-Geophysics .....	31	40	14	108	607	1,701	120
Lower Division .....	6	18	23	41	413	1,042	69
Upper Division .....	12	10	7	37	74	237	16
Graduate Level .....	13	12	6	30	120	422	35

TABLE 1 (cont.)

COURSE OFFERING	COURSES	CLASSES 1/		SEMESTER HOURS	STUDENT REGIS	STUDENT SEM HRS	COURSE FTE
		No.	Avg Size				
Meteorology .....	13	13	18	31	259	686	48
Lower Division .....	3	6	28	12	166	410	27
Upper Division .....	3	3	10	9	31	93	6
Graduate Level .....	7	4	8	10	62	183	15
Ocean/Earth Sci & Tech .....	5	4	9	6	39	130	10
Lower Division .....	1	1	5	1	5	5	
Upper Division .....	1	1	5	0	5	42	3
Graduate Level .....	3	2	13	5	29	83	7
Ocean Engineering .....	13	11	2	29	44	126	10
Lower Division .....	1	1	6	3	6	18	1
Graduate Level .....	12	10	2	26	38	108	9
Oceanography .....	15	14	19	38	303	932	67
Lower Division .....	1	2	104	6	207	621	41
Graduate Level .....	14	12	5	32	96	311	26
SCHOOL OF ARCHITECTURE .....	25	31	22	110	708	2,384	163
Lower Division .....	7	8	31	21	244	754	50
Upper Division .....	9	14	25	60	372	1,337	89
Graduate Level .....	9	9	9	29	92	293	24
COLLEGE OF BUSINESS ADMIN .....	85	155	29	461	4,488	13,309	920
Lower Division .....	4	15	52	43	774	2,306	154
Upper Division .....	54	109	28	330	3,018	9,048	604
Graduate Level .....	27	31	22	88	696	1,955	162
Accounting .....	15	30	33	90	1,001	3,003	203
Lower Division .....	2	10	55	30	545	1,635	109
Upper Division .....	8	15	27	45	399	1,197	80
Graduate Level .....	5	5	11	15	57	171	14
Business (General) .....	28	69	29	202	2,035	5,972	420
Upper Division .....	14	51	30	153	1,553	4,659	311
Graduate Level .....	14	18	26	49	482	1,313	109
Decision Sciences .....	9	12	30	36	358	1,070	72
Upper Division .....	7	10	34	30	341	1,019	68
Graduate Level .....	2	2	9	6	17	51	4
Finance .....	10	18	28	54	495	1,485	101
Lower Division .....	1	4	55	12	221	663	44
Upper Division .....	7	12	18	36	217	651	43
Graduate Level .....	2	2	29	6	57	171	14
Business Law .....	1	4	55	12	221	663	44
Lower Division .....	1	4	55	12	221	663	44
Finance .....	8	13	20	39	264	792	55
Upper Division .....	6	11	19	33	207	621	41
Graduate Level .....	2	2	29	6	57	171	14
Real Estate .....	1	1	10	3	10	30	2
Upper Division .....	1	1	10	3	10	30	2

TABLE 1 (cont.)

COURSE OFFERING	COURSES	CLASSES 1/		SEMESTER HOURS	STUDENT REGIS	STUDENT SEM HRS	COURSE FTE
		No.	Avg Size				
Management & Ind Rel .....	13	13	20	40	257	755	54
Lower Division .....	1	1	8	1	8	8	1
Upper Division .....	10	10	20	33	199	597	40
Graduate Level .....	2	2	25	6	50	150	13
Human Resources Mgmt .....	6	6	19	19	113	323	24
Lower Division .....	1	1	8	1	8	8	1
Upper Division .....	4	4	20	15	79	237	16
Graduate Level .....	1	1	26	3	26	78	7
Industrial Relations .....	2	2	17	6	34	102	7
Upper Division .....	2	2	17	6	34	102	7
Management .....	5	5	22	15	110	330	23
Upper Division .....	4	4	22	12	86	258	17
Graduate Level .....	1	1	24	3	24	72	6
Marketing .....	10	13	26	39	342	1,024	70
Upper Division .....	8	11	28	33	309	925	62
Graduate Level .....	2	2	17	6	33	99	8
SCH OF TRAVEL INDUSTRY MGT ..	33	35	25	92	869	2,314	157
Lower Division .....	4	6	35	14	212	442	29
Upper Division .....	23	24	25	65	605	1,718	115
Graduate Level .....	6	5	10	13	52	154	13
Travel Industry Management .....	30	32	25	83	796	2,095	142
Lower Division .....	4	6	35	14	212	442	29
Upper Division .....	20	21	25	56	532	1,499	100
Graduate Level .....	6	5	10	13	52	154	13
Transportation .....	3	3	24	9	73	219	15
Upper Division .....	3	3	24	9	73	219	15
COLLEGE OF EDUCATION .....	199	320	12	1,153	4,136	11,992	846
Lower Division .....	28	37	28	52	1,036	1,544	103
Upper Division .....	73	183	10	795	1,931	7,038	469
Graduate Level .....	98	100	9	306	1,169	3,410	274
Counseling & Guidance .....	18	21	8	79	173	570	48
Graduate Level .....	18	21	8	79	173	570	48
Curriculum & Instruction .....	40	98	10	412	1,050	3,833	256
Upper Division .....	24	85	10	377	822	3,250	217
Graduate Level .....	16	13	12	35	228	583	39
Elementary Education .....	2	1	12	1	13	17	1
Graduate Level .....	2	1	12	1	13	17	1
Secondary Education .....	2	1	7	1	8	8	1
Graduate Level .....	2	1	7	1	8	8	1
Teacher Ed & Curric Studies .....	36	96	10	410	1,029	3,808	254
Upper Division .....	24	85	10	377	822	3,250	217

TABLE 1 (cont.)

COURSE OFFERING	COURSES	CLASSES 1/		SEMESTER HOURS	STUDENT REGIS	STUDENT SEM HRS	COURSE FTE
		No.	Avg Size				
Education, Interdisc .....	13	52	6	285	323	1,626	116
Upper Division .....	6	41	5	243	212	1,158	77
Graduate Level .....	7	11	8	42	111	468	39
Educational Administration .....	14	16	13	40	254	692	55
Upper Division .....	1	2	21	6	42	126	8
Graduate Level .....	13	14	12	34	212	566	47
Educational Technology .....	11	10	15	30	160	471	36
Upper Division .....	4	4	15	12	60	178	12
Graduate Level .....	7	6	16	18	100	293	24
Educ Foundations .....	9	8	15	22	138	386	29
Upper Division .....	2	3	25	9	74	222	15
Graduate Level .....	7	5	9	13	64	164	14
Educ Psychology .....	20	23	10	59	274	774	57
Lower Division .....	1	1	15	2	15	30	2
Upper Division .....	5	8	14	24	130	391	26
Graduate Level .....	14	14	7	33	129	353	29
Kinesiology & Leisure Science 4/ ....	54	64	21	138	1,377	2,513	168
Lower Division .....	27	36	28	50	1,021	1,514	101
Upper Division .....	24	26	13	82	340	958	64
Graduate Level .....	3	2	5	6	16	41	3
Special Education .....	20	28	13	88	387	1,127	81
Upper Division .....	7	14	18	42	251	755	50
Graduate Level .....	13	14	7	46	136	372	31
COLLEGE OF ENGINEERING .....	121	135	12	312	1,734	4,879	342
Lower Division .....	14	23	16	44	363	1,076	72
Upper Division .....	66	76	13	169	1,033	2,841	189
Graduate Level .....	41	36	7	99	338	962	81
Civil Engineering .....	42	42	14	115	602	1,696	119
Lower Division .....	5	5	21	10	106	223	15
Upper Division .....	21	21	17	61	368	1,127	75
Graduate Level .....	16	16	6	44	128	346	29
Electrical Engineering .....	49	67	12	128	835	2,387	167
Lower Division .....	7	16	15	30	237	815	54
Upper Division .....	25	36	12	56	429	1,082	72
Graduate Level .....	17	15	8	42	169	490	41
Interdisciplinary Engineering .....	2	2	14	2	28	28	2
Lower Division .....	1	1	11	1	11	11	1
Upper Division .....	1	1	17	1	17	17	1
Mechanical Engineering .....	28	24	11	67	269	768	54
Lower Division .....	1	1	9	3	9	27	2
Upper Division .....	19	18	12	51	219	615	41
Graduate Level .....	8	5	5	13	41	126	11
COLL OF TROP AG & HUM RES .....	127	118	26	319	3,238	9,588	650
Lower Division .....	14	22	61	67	1,339	4,013	268
Upper Division .....	65	71	23	195	1,643	4,977	332
Graduate Level .....	48	25	6	57	256	598	50

TABLE 1 (cont.)

COURSE OFFERING	COURSES	CLASSES 1/		SEMESTER HOURS	STUDENT REGIS	STUDENT SEM HRS	COURSE FTE
		No.	Avg Size				
Agric & Resource Econ .....	12	10	28	29	291	856	59
Lower Division .....	2	3	61	9	183	549	37
Upper Division .....	2	2	35	7	70	220	15
Graduate Level .....	8	5	5	13	38	87	7
Agronomy & Soil Science .....	9	7	5	13	47	127	10
Lower Division .....	1	1	5	3	5	15	1
Upper Division .....	1	2	4		8	24	2
Graduate Level .....	7	4	6	10	34	88	7
Agronomy & Soil Sci .....	7	5	5	7	39	103	8
Upper Division .....	1	2	4		8	24	2
Graduate Level .....	5	2	7	4	26	64	5
Agronomy .....	1	1	7	3	7	21	2
Graduate Level .....	1	1	7	3	7	21	2
Soil Science .....	1	1	1	3	1	3	
Graduate Level .....	1	1	1	3	1	3	
Animal Science .....	10	8	19	21	161	463	32
Lower Division .....	1	1	30	3	30	90	6
Upper Division .....	6	5	21	15	106	319	21
Graduate Level .....	3	2	8	3	25	54	5
Biosystems Engineering 5/ .....	8	6	6	16	49	126	9
Upper Division .....	3	3	8	9	25	75	5
Graduate Level .....	5	3	4	7	24	51	4
Entomology .....	8	5	6	9	37	90	6
Lower Division .....	1	1	11	3	11	33	2
Upper Division .....	1	1	2		2	4	
Graduate Level .....	6	3	5	6	24	53	4
Environmental Biochemistry .....	2	1	49	4	52	215	15
Upper Division .....	1	1	49	4	49	196	13
Graduate Level .....	1	0	0	0	3	19	2
Food Sci & Hum Nutrition .....	15	16	44	43	715	2,137	143
Lower Division .....	1	5	86	15	432	1,296	86
Upper Division .....	10	9	29	23	260	793	53
Graduate Level .....	4	2	5	5	23	48	4
Horticulture .....	12	8	8	20	86	235	17
Upper Division .....	7	6	9	17	54	176	12
Graduate Level .....	5	2	7	3	32	59	5
Plant Molecular Physiol .....	5	3	14	7	54	154	12
Upper Division .....	2	1	23	3	25	75	5
Graduate Level .....	3	2	10	4	29	79	7
Plant Pathology .....	4	2	6	4	20	53	4
Upper Division .....	1				2	5	
Graduate Level .....	3	2	6	4	18	48	4

TABLE 1 (cont.)

COURSE OFFERING	COURSES	CLASSES 1/		SEMESTER HOURS	STUDENT REGIS	STUDENT SEM HRS	COURSE FTE
		No.	Avg Size				
Human Resources .....	42	52	33	153	1,726	5,132	343
Lower Division .....	8	11	62	34	678	2,030	136
Upper Division .....	31	41	25	117	1,042	3,090	206
Graduate Level .....	3	0	0	2	6	12	1
Family Resources .....	26	38	37	109	1,420	4,209	281
Lower Division .....	1	4	124	12	494	1,482	99
Upper Division .....	23	34	27	95	921	2,716	181
Graduate Level .....	2	0	0	2	5	11	1
Textiles & Clothing .....	16	14	21	44	306	923	62
Lower Division .....	7	7	26	22	184	548	37
Upper Division .....	8	7	16	22	121	374	25
Graduate Level .....	1	0	0	0	1	1	0
HEALTH SCI & SOCIAL WELFARE ..	1	1	25	3	25	75	5
Upper Division .....	1	1	25	3	25	75	5
SCHOOL OF MEDICINE .....	133	161	16	343	2,589	8,590	680
Lower Division .....	4	8	44	12	348	715	47
Upper Division .....	26	23	21	68	486	1,543	103
Graduate Level .....	103	130	13	263	1,755	6,332	530
Allied Medical Sci .....	35	38	8	106	322	919	66
Lower Division .....	2	2	9	4	17	34	2
Upper Division .....	17	16	12	49	194	580	39
Graduate Level .....	16	20	5	53	111	305	25
Medical Technology .....	9	8	9	25	74	210	14
Lower Division .....	2	2	9	4	17	34	2
Upper Division .....	7	6	9	21	57	176	12
Speech Path & Audiology .....	26	30	8	81	248	709	52
Upper Division .....	10	10	14	28	137	404	27
Graduate Level .....	16	20	5	53	111	305	25
Anatomy & Repro Biol .....	8	3	13	2	47	64	5
Upper Division .....	2	0	0	0	3	8	0
Graduate Level .....	6	3	13	2	44	56	5
Anatomy .....	5	2	19	1	42	48	4
Upper Division .....	1	0	0	0	2	5	0
Graduate Level .....	4	2	19	1	40	43	4
Reproductive Biology .....	3	1	2	1	5	16	1
Upper Division .....	1	0	0	0	1	3	0
Graduate Level .....	2	1	2	1	4	13	1
Biochemistry & Biophysics .....	8	6	19	15	114	404	28
Upper Division .....	2	2	51	7	102	379	25
Graduate Level .....	6	4	3	8	12	25	3
Biochemistry .....	5	3	35	8	107	386	26
Upper Division .....	2	2	51	7	102	379	25
Graduate Level .....	3	1	3	1	5	7	1
Biophysics .....	3	3	2	7	7	18	2
Graduate Level .....	3	3	2	7	7	18	2



TABLE 1 (cont.)

COURSE OFFERING	COURSES	CLASSES 1/		SEMESTER HOURS	STUDENT REGIS	STUDENT SEM HRS	COURSE FTE
		No.	Avg Size				
Biomedical Sciences .....	28	27	36	64	1,002	2,952	246
Graduate Level .....	28	27	36	64	1,002	2,952	246
Fam Prac & Comm Health .....	3	6	6	20	33	298	25
Graduate Level .....	3	6	6	20	33	298	25
Genetics & Molecular Biology .....	13	13	5	17	96	277	21
Upper Division .....	3	2	22	6	48	143	10
Graduate Level .....	10	11	3	11	48	134	11
Medicine .....	5	16	7	22	108	767	64
Graduate Level .....	5	16	7	22	108	767	64
Obstetrics, Gyn & Women's Health...	3	5	6	15	31	255	21
Graduate Level .....	3	5	6	15	31	255	21
Pathology .....	4	4	25	1	99	115	10
Graduate Level .....	4	4	25	1	99	115	10
Pediatrics .....	3	8	6	15	45	346	29
Graduate Level .....	3	8	6	15	45	346	29
Pharmacology .....	3	2	7	2	16	27	2
Graduate Level .....	3	2	7	2	16	27	2
Physiology .....	9	12	40	23	500	1,228	84
Lower Division .....	2	6	55	8	331	681	45
Upper Division .....	2	3	46	6	139	433	29
Graduate Level .....	5	3	4	9	30	114	10
Psychiatry .....	3	5	7	15	37	287	24
Graduate Level .....	3	5	7	15	37	287	24
Surgery .....	4	13	9	21	120	609	51
Graduate Level .....	4	13	9	21	120	609	51
Trop Med & Med Micro .....	4	3	4	5	19	42	4
Graduate Level .....	4	3	4	5	19	42	4
<b>SCHOOL OF NURSING .....</b>	<b>60</b>	<b>97</b>	<b>12</b>	<b>208</b>	<b>1,174</b>	<b>2,719</b>	<b>189</b>
Lower Division .....	7	19	8	21	154	198	13
Upper Division .....	39	63	13	143	855	2,043	136
Graduate Level .....	14	15	9	44	165	478	40
Dental Hygiene .....	20	42	9	53	372	549	36
Lower Division .....	7	19	8	21	154	198	13
Upper Division .....	13	23	9	32	218	351	23
Nursing .....	40	55	14	155	802	2,170	153
Upper Division .....	26	40	16	111	637	1,692	113
Graduate Level .....	14	15	9	44	165	478	40
<b>SCHOOL OF PUBLIC HEALTH .....</b>	<b>50</b>	<b>49</b>	<b>10</b>	<b>133</b>	<b>546</b>	<b>1,400</b>	<b>117</b>
Upper Division .....	1	1	8	3	8	24	2
Graduate Level .....	49	48	10	130	538	1,376	115

TABLE 1 (cont.)

COURSE OFFERING	COURSES	CLASSES 1/		SEMESTER HOURS	STUDENT REGIS	STUDENT SEM HRS	COURSE FTE
		No.	Avg Size				
SCHOOL OF SOCIAL WORK .....	30	40	19	94	779	2,381	190
Lower Division .....	1	1	17	3	17	51	3
Upper Division .....	7	6	23	19	137	433	29
Graduate Level .....	22	33	18	72	625	1,897	158
SCHOOL OF LAW .....	47	58	21	150	1,234	3,508	292
Graduate Level .....	47	58	21	150	1,234	3,508	292
MILITARY STUDIES .....	10	18	6	45	107	275	19
Lower Division .....	5	12	5	25	62	119	8
Upper Division .....	5	6	7	20	45	156	11
Aerospace Studies .....	4	8	6	18	50	110	8
Lower Division .....	2	4	7	6	27	41	3
Upper Division .....	2	4	6	12	23	69	5
Military Science .....	6	10	6	27	57	165	11
Lower Division .....	3	8	4	19	35	78	5
Upper Division .....	3	2	11	8	22	87	6

1/ Excludes classes numbered -99 (Individual Instruction), 700 (Thesis Research), and 800 (Dissertation Research).

2/ Formerly called Indo-Pacific Languages.

3/ In Fall 1998, the Graduate School of Library Studies was moved organizationally to the College of Arts & Sciences, Natural Sciences.

4/ Formerly called Health, Physical Education & Recreation.

5/ Formerly called Agricultural Engineering.

SOURCE: Computer Report 3011: "Course Registration Summary Report;" and  
Computer Report 3011C: "Number of Classes and Average Class Size."

TABLE 2  
STUDENT SEMESTER HOURS (SSH) AND COURSE FTE  
UNIVERSITY OF HAWAI'I AT MANOA  
SPRING 1995 TO SPRING 1999

COLLEGE AND LEVEL	SPRING 1995			SPRING 1996			SPRING 1997			SPRING 1998			SPRING 1999		
	SSH		COURSE FTE	SSH		COURSE FTE	SSH		COURSE FTE	SSH		COURSE FTE	SSH		COURSE FTE
	No.	%C		No.	%C		No.	%C		No.	%C		No.	%C	
TOTAL .....	210,405	-1	14,653	206,715	-2	14,372	190,522	-8	13,260	185,281	-3	12,875	179,219	-3	12,469
Lower Division .....	97,058	0	6,471	96,531	-1	6,434	87,788	-9	5,850	86,056	-2	5,732	81,435	-5	5,428
Upper Division .....	76,240	-2	5,084	74,785	-2	4,982	69,453	-7	4,632	67,727	-2	4,509	66,321	-2	4,423
Graduate Level .....	37,107	0	3,098	35,399	-5	2,956	33,281	-6	2,778	31,498	-5	2,634	31,463	0	2,618
COLL OF ARTS & SCIENCES 1/ .....	132,404	0	9,023	130,861	-1	8,902	119,286	-9	8,121	115,816	-3	7,880	109,789	-5	7,474
Lower Division .....	82,178	1	5,477	80,921	-2	5,392	73,041	-10	4,868	71,083	-3	4,735	66,942	-6	4,464
Upper Division .....	38,798	-3	2,589	39,010	1	2,598	36,267	-7	2,416	35,177	-3	2,345	33,851	-4	2,257
Graduate Level 1/ .....	11,428	-1	957	10,930	-4	912	9,978	-9	837	9,556	-4	800	8,996	-6	753
Arts and Humanities .....	34,453	-2	2,341	33,590	-3	2,277	29,684	-12	2,012	28,611	-4	1,939	26,913	-6	1,824
Lower Division .....	21,052	-3	1,404	20,490	-3	1,366	17,530	-14	1,167	17,029	-3	1,135	16,172	-5	1,079
Upper Division .....	10,941	-3	731	10,833	-1	722	10,203	-6	680	9,778	-4	652	9,058	-7	604
Graduate Level .....	2,460	11	206	2,267	-8	189	1,951	-14	165	1,804	-8	152	1,683	-7	141
Lang, Ling and Lit .....	33,749	3	2,287	33,775	0	2,282	32,889	-3	2,230	31,539	-4	2,139	29,106	-8	1,974
Lower Division .....	23,408	2	1,557	23,831	2	1,587	23,137	-3	1,543	21,810	-6	1,451	19,946	-9	1,329
Upper Division .....	8,175	5	547	7,936	-3	528	7,644	-4	509	7,601	-1	509	7,212	-5	482
Graduate Level .....	2,166	9	183	2,008	-7	167	2,108	5	178	2,128	1	179	1,948	-8	163
Natural Sciences 1/ .....	28,653	5	1,953	28,486	-1	1,939	26,329	-8	1,793	26,284	0	1,789	24,910	-5	1,697
Lower Division .....	21,621	7	1,441	21,431	-1	1,428	19,780	-8	1,318	19,872	0	1,325	18,513	-7	1,234
Upper Division .....	4,508	1	301	4,569	1	304	4,230	-7	282	4,226	0	281	4,290	2	286
Graduate Level 1/ .....	2,524	-6	211	2,486	-2	207	2,319	-7	193	2,186	-6	183	2,107	-4	177
Social Sciences .....	34,720	-5	2,385	34,201	-1	2,348	29,737	-13	2,041	28,536	-4	1,956	28,043	-2	1,924
Lower Division .....	15,641	-2	1,044	14,913	-5	994	12,434	-17	829	12,047	-3	803	11,964	-1	799
Upper Division .....	14,885	-7	991	15,248	2	1,016	13,816	-9	920	13,172	-5	877	12,914	-2	860
Graduate Level .....	4,194	-7	350	4,040	-4	338	3,487	-14	292	3,317	-5	276	3,165	-5	265
Other Arts & Sciences .....	829	-7	57	809	-2	56	647	-20	45	846	31	57	817	-3	55
Lower Division .....	456	-7	31	256	-44	17	160	-38	11	325	103	21	347	7	23
Upper Division .....	289	17	19	424	47	28	374	-12	25	400	7	26	377	-6	25
Graduate Level .....	84	-46	7	129	54	11	113	-12	9	121	7	10	93	-23	7

TABLE 2 (cont.)

COLLEGE AND LEVEL	SPRING 1995			SPRING 1996			SPRING 1997			SPRING 1998			SPRING 1999		
	SSH		COURSE FTE	SSH		COURSE FTE	SSH		COURSE FTE	SSH		COURSE FTE	SSH		COURSE FTE
	No.	%C		No.	%C		No.	%C		No.	%C		No.	%C	
HAWN, ASIAN & PAC STUD .....	2,073	0	141	2,422	17	167	2,029	-16	140	2,243	11	155	2,441	9	170
Lower Division .....	888	-13	59	1,041	17	69	810	-22	54	957	18	63	1,179	23	79
Upper Division .....	1,001	34	67	1,005	0	67	962	-4	64	966	0	65	865	-10	57
Graduate Level .....	184	-40	15	376	104	31	257	-32	22	320	25	27	397	24	34
SCH OCEAN EARTH SCI TECH..	3,643	-6	266	3,857	6	279	3,312	-14	242	3,380	2	244	3,575	6	255
Lower Division .....	2,069	-4	139	2,358	14	158	1,944	-18	130	1,983	2	132	2,096	6	138
Upper Division .....	235	-45	16	260	11	17	216	-17	15	304	41	20	372	22	25
Graduate Level .....	1,339	2	111	1,239	-7	104	1,152	-7	97	1,093	-5	92	1,107	1	92
SCHOOL OF ARCHITECTURE .....	2,408	13	164	2,662	11	180	2,937	10	199	2,668	-9	180	2,384	-11	163
Lower Division .....	1,406	3	94	1,498	7	100	1,306	-13	87	1,261	-3	84	754	-40	50
Upper Division .....	849	22	57	1,047	23	70	1,423	36	95	1,314	-8	88	1,337	2	89
Graduate Level .....	153	135	13	117	-24	10	208	78	17	93	-55	8	293	215	24
COLL OF BUSINESS ADMIN .....	14,540	-6	1,007	14,256	-2	985	13,505	-5	929	13,123	-3	905	13,309	1	920
Lower Division .....	2,235	-11	150	2,230	0	149	2,305	3	153	2,271	-1	151	2,306	2	154
Upper Division .....	10,199	-8	680	9,985	-2	665	9,375	-6	625	9,022	-4	600	9,048	0	604
Graduate Level .....	2,106	5	177	2,041	-3	171	1,825	-11	151	1,830	0	154	1,955	7	162
SCH OF TRAVEL IND MGT .....	2,595	1	174	2,112	-19	142	1,952	-8	130	2,080	7	140	2,314	11	157
Lower Division .....	404	-28	27	513	27	34	359	-30	24	371	3	25	442	19	29
Upper Division .....	2,094	8	139	1,517	-28	101	1,528	1	101	1,602	5	106	1,718	7	115
Graduate Level .....	97	20	8	82	-15	7	65	-21	5	107	65	9	154	44	13
COLLEGE OF EDUCATION .....	15,858	2	1,137	13,797	-13	994	11,763	-15	849	11,704	-1	838	11,992	2	846
Lower Division .....	2,144	-1	143	1,341	-37	89	1,296	-3	86	1,173	-9	78	1,544	32	103
Upper Division .....	8,867	0	590	8,045	-9	536	6,555	-19	438	7,055	8	470	7,038	0	469
Graduate Level .....	4,847	8	404	4,411	-9	369	3,912	-11	325	3,476	-11	290	3,410	-2	274
COLLEGE OF ENGINEERING .....	6,917	-3	478	6,389	-8	444	5,480	-14	381	4,891	-11	338	4,879	0	342
Lower Division .....	1,204	-18	80	1,194	-1	80	1,088	-9	73	1,294	19	86	1,076	-17	72
Upper Division .....	4,685	1	312	4,107	-12	273	3,470	-16	231	2,899	-16	193	2,841	-2	189
Graduate Level .....	1,028	0	86	1,088	6	91	922	-15	77	698	-24	59	962	38	81
COLL OF TROP AG & HUM RES .....	9,074	2	619	10,120	12	689	10,353	2	704	10,144	-2	682	9,588	-5	650
Lower Division .....	4,034	4	269	4,446	10	297	4,499	1	300	4,494	0	299	4,013	-11	268
Upper Division .....	4,228	3	282	4,927	17	330	5,137	4	344	5,121	0	340	4,977	-3	332
Graduate Level .....	812	-6	68	747	-8	62	717	-4	60	529	-26	43	598	13	50

TABLE 2 (cont.)

COLLEGE AND LEVEL	SPRING 1995			SPRING 1996			SPRING 1997			SPRING 1998			SPRING 1999		
	SSH		COURSE FTE	SSH		COURSE FTE	SSH		COURSE FTE	SSH		COURSE FTE	SSH		COURSE FTE
	No.	%C		No.	%C		No.	%C		No.	%C		No.	%C	
HEALTH SCI & SOC WELFARE .....	47	9	4	90	91	6	54	-40	4	81	50	5	75	-7	5
Upper Division .....				63		4	54	-14	4	81	50	5	75	-7	5
Graduate Level .....	47	9	4	27	-43	2									
SCHOOL OF MEDICINE .....	8,302	-7	661	8,709	5	687	8,923	2	705	8,753	-2	695	8,590	-2	680
Lower Division .....	92	-2	6	573	523	38	718	25	48	731	2	49	715	-2	47
Upper Division .....	1,742	2	116	1,768	1	117	1,610	-9	107	1,425	-11	94	1,543	8	103
Graduate Level .....	6,468	-10	539	6,368	-2	532	6,595	4	550	6,597	0	552	6,332	-4	530
SCHOOL OF NURSING .....	3,717	2	257	2,915	-22	201	2,789	-4	194	2,801	0	196	2,719	-3	189
Lower Division .....	189	-5	13	198	5	13	153	-23	10	219	43	15	198	-10	13
Upper Division .....	2,984	1	199	2,306	-23	154	2,163	-6	145	2,071	-4	138	2,043	-1	136
Graduate Level .....	544	12	45	411	-24	34	473	15	39	511	8	43	478	-6	40
SCHOOL OF PUBLIC HEALTH....	2,659	8	222	2,232	-16	186	1,630	-27	136	1,463	-10	121	1,400	-4	117
Upper Division .....				42		3	24	-43	2	36	50	2	24	-33	2
Graduate Level .....	2,659	8	222	2,190	-18	183	1,606	-27	134	1,427	-11	119	1,376	-4	115
SCHOOL OF SOCIAL WORK .....	2,556	6	203	2,717	6	216	2,911	7	231	2,574	-12	204	2,381	-7	190
Lower Division .....	108	20	7	99	-8	7	111	12	7	90	-19	6	51	-43	3
Upper Division .....	440	-1	29	579	32	39	570	-2	38	524	-8	35	433	-17	29
Graduate Level .....	2,008	7	167	2,039	2	170	2,230	9	186	1,960	-12	163	1,897	-3	158
SCHOOL OF LAW .....	3,387	-2	282	3,333	-2	278	3,341	0	278	3,301	-1	275	3,508	6	292
Graduate Level .....	3,387	-2	282	3,333	-2	278	3,341	0	278	3,301	-1	275	3,508	6	292
MILITARY STUDIES .....	225	-9	15	243	8	16	257	6	17	259	1	17	275	6	19
Lower Division .....	107	1	7	119	11	8	158	33	10	129	-18	9	119	-8	8
Upper Division .....	118	-17	8	124	5	8	99	-20	7	130	31	8	156	20	11

1/ In Fall 1998, the Graduate School of Library Studies was moved organizationally to the College of Arts & Sciences, Natural Sciences (Library and Information Studies). These figures have been adjusted to reflect this and so differ from those reported previously.

SOURCE: Computer Report 3011: "Course Registration Summary Report."

TABLE 3  
NUMBER OF CLASSES AND AVERAGE CLASS SIZE 1/  
UNIVERSITY OF HAWAI'I AT MANOA

COLLEGE AND LEVEL	SPRING 1995			SPRING 1996			SPRING 1997			SPRING 1998			SPRING 1999		
	CLASSES No.	%C	AVG SIZE	CLASSES No.	%C	AVG SIZE	CLASSES No.	%C	AVG SIZE	CLASSES No.	%C	AVG SIZE	CLASSES No.	%C	AVG SIZE
TOTAL .....	3,522	0.1	20	3,292	-6.5	21	3,220	-2.2	20	3,215	-0.2	19	3,200	-0.5	19
Lower Division .....	1,243	0.8	28	1,103	-11.3	31	1,071	-2.9	29	1,063	-0.7	29	1,045	-1.7	28
Upper Division .....	1,296	-2.3	20	1,250	-3.5	20	1,205	-3.6	19	1,241	3.0	18	1,259	1.5	17
Graduate Level .....	983	2.6	11	939	-4.5	10	944	0.5	10	911	-3.5	10	896	-1.6	10
COLL OF ARTS & SCIENCES 2/ ...	2,119	-0.7	21	1,973	-6.9	23	1,963	-0.5	21	1,941	-1.1	20	1,861	-4.1	20
Lower Division .....	1,053	1.2	27	940	-10.7	30	900	-4.3	29	887	-1.4	28	852	-3.9	28
Upper Division .....	675	-3.0	20	656	-2.8	20	692	5.5	18	679	-1.9	18	654	-3.7	18
Graduate Level 2/ .....	391	-1.5	8	377	-3.6	7	370	-1.9	7	375	1.4	7	355	-5.3	7
Arts and Humanities .....	572	-2.2	21	526	-8.0	23	528	0.4	20	509	-3.6	20	457	-10.2	21
Lower Division .....	242	-5.8	30	216	-10.7	33	201	-6.9	30	195	-3.0	31	180	-7.7	31
Upper Division .....	218	-2.7	19	209	-4.1	20	229	9.6	17	223	-2.6	17	200	-10.3	18
Graduate Level .....	112	7.7	6	101	-9.8	6	98	-3.0	5	91	-7.1	5	77	-15.4	6
Lang, Ling and Lit .....	682	2.7	15	648	-5.0	16	622	-4.0	16	629	1.1	15	611	-2.9	14
Lower Division .....	421	5.0	16	403	-4.3	17	376	-6.7	18	375	-0.3	17	350	-6.7	17
Upper Division .....	188	-1.1	14	179	-4.8	15	181	1.1	14	180	-0.6	14	180	0.0	13
Graduate Level .....	73	0.0	9	66	-9.6	9	65	-1.5	9	74	13.8	8	81	9.5	7
Natural Sciences 2/ .....	407	-5.6	28	386	-5.2	29	393	1.8	27	391	-0.5	28	382	-2.3	26
Lower Division .....	246	-5.4	37	229	-6.9	40	229	0.0	38	228	-0.4	38	221	-3.1	36
Upper Division .....	85	-5.6	18	82	-3.5	20	84	2.4	18	86	2.4	17	89	3.5	17
Graduate Level 2/ .....	76	-6.2	8	75	-1.3	8	80	6.7	7	77	-4.7	7	72	-6.5	7
Social Sciences .....	445	1.1	25	387	-13.0	28	395	2.1	24	387	-2.0	23	384	-0.8	23
Lower Division .....	140	17.6	38	82	-41.4	62	87	6.1	49	82	-5.7	50	91	11.0	45
Upper Division .....	178	-4.3	27	174	-2.2	28	184	5.7	24	176	-4.3	23	172	-2.3	24
Graduate Level .....	127	-5.9	8	131	3.1	8	124	-5.3	7	129	4.0	7	121	-6.2	7
Other Arts & Sciences .....	13	-7.1	23	26	100.0	12	24	-7.7	10	25	4.2	14	27	8.0	14
Lower Division .....	4	0.0	38	10	150.0	11	7	-30.0	8	7	0.0	21	10	42.9	21
Upper Division .....	6	0.0	18	12	100.0	13	14	16.7	10	14	0.0	10	13	-7.1	10
Graduate Level .....	3	-25.0	12	4	33.3	12	3	-25.0	14	4	33.3	14	4	0.0	12

TABLE 3 (cont.)

COLLEGE AND LEVEL	SPRING 1995			SPRING 1996			SPRING 1997			SPRING 1998			SPRING 1999		
	CLASSES		AVG	CLASSES		AVG	CLASSES		AVG	CLASSES		AVG	CLASSES		AVG
	No.	%C	SIZE	No.	%C	SIZE	No.	%C	SIZE	No.	%C	SIZE	No.	%C	SIZE
HAWN, ASIAN & PAC STUD .....	35	-2.8	19	41	17.1	19	42	2.4	15	37	-11.9	19	39	5.4	20
Lower Division .....	8	0.0	37	9	12.5	39	8	-11.1	34	9	12.5	35	14	55.6	29
Upper Division .....	16	6.7	20	20	25.0	17	20	0.0	16	17	-15.0	18	14	-17.6	20
Graduate Level .....	11	-15.4	5	12	9.1	7	14	16.7	4	11	-21.4	7	11	0.0	7
SCH OCEAN EARTH SCI TECH ...	76	-2.6	14	80	5.3	15	76	-5.0	14	73	-3.9	14	82	12.3	14
Lower Division .....	26	4.0	30	26	0.0	34	27	3.8	28	25	-7.4	31	28	12.0	28
Upper Division .....	13	-7.1	6	13	0.0	6	9	-30.8	7	11	22.2	9	14	27.3	8
Graduate Level .....	37	-5.1	6	41	10.8	6	40	-2.4	6	37	-7.5	5	40	8.1	5
SCHOOL OF ARCHITECTURE .....	38	5.6	20	33	-13.2	25	32	-3.0	28	41	28.1	19	31	-24.4	22
Lower Division .....	16	0.0	28	12	-25.0	40	12	0.0	35	15	25.0	27	8	-46.7	31
Upper Division .....	15	7.1	18	15	0.0	21	14	-6.7	30	20	42.9	19	14	-30.0	25
Graduate Level .....	7	16.7	7	6	-14.3	6	6	0.0	9	6	0.0	3	9	50.0	9
COLL OF BUSINESS ADMIN .....	173	-5.5	27	149	-13.9	30	149	0.0	29	149	0.0	29	155	4.0	29
Lower Division .....	17	21.4	44	15	-11.8	50	16	6.7	48	15	-6.3	51	15	0.0	52
Upper Division .....	127	-8.0	27	111	-12.6	30	109	-1.8	29	105	-3.7	29	109	3.8	28
Graduate Level .....	29	-6.5	20	23	-20.7	20	24	4.3	18	29	20.8	19	31	6.9	22
SCH OF TRAVEL IND MGT .....	35	20.7	28	33	-5.7	25	29	-12.1	26	30	3.4	27	35	16.7	25
Lower Division .....	4	0.0	57	4	0.0	60	3	-25.0	63	3	0.0	64	6	100.0	35
Upper Division .....	28	21.7	26	25	-10.7	22	22	-12.0	25	22	0.0	26	24	9.1	25
Graduate Level .....	3	50.0	10	4	33.3	7	4	0.0	6	5	25.0	7	5	0.0	10
COLLEGE OF EDUCATION .....	339	-3.4	17	310	-8.6	14	248	-20.0	15	287	15.7	13	320	11.5	12
Lower Division .....	52	-11.9	31	29	-44.2	29	32	10.3	26	31	-3.1	26	37	19.4	28
Upper Division .....	169	2.4	17	161	-4.7	15	105	-34.8	18	149	41.9	13	183	22.8	10
Graduate Level .....	118	-7.1	11	120	1.7	10	111	-7.5	10	107	-3.6	9	100	-6.5	9
COLLEGE OF ENGINEERING .....	143	-0.7	16	145	1.4	15	131	-9.7	14	128	-2.3	13	135	5.5	12
Lower Division .....	16	0.0	24	18	12.5	22	16	-11.1	24	22	37.5	19	23	4.5	16
Upper Division .....	99	5.3	16	91	-8.1	16	85	-6.6	15	80	-5.9	13	76	-5.0	13
Graduate Level .....	28	-17.6	8	36	28.6	7	30	-16.7	7	26	-13.3	6	36	38.5	7
COLL OF TROP AG & HUM RES...	133	-2.9	22	129	-3.0	26	139	7.8	25	131	-5.8	25	118	-9.9	26
Lower Division .....	31	6.9	44	26	-16.1	58	29	11.5	52	27	-6.9	56	22	-18.5	61
Upper Division .....	71	-2.7	19	75	5.6	22	79	5.3	22	79	0.0	21	71	-10.1	23
Graduate Level .....	31	-11.4	6	28	-9.7	6	31	10.7	6	25	-19.4	5	25	0.0	6

TABLE 3 (cont.)

COLLEGE AND LEVEL	SPRING 1995			SPRING 1996			SPRING 1997			SPRING 1998			SPRING 1999		
	CLASSES No.	%C	AVG SIZE	CLASSES No.	%C	AVG SIZE	CLASSES No.	%C	AVG SIZE	CLASSES No.	%C	AVG SIZE	CLASSES No.	%C	AVG SIZE
HEALTH SCI & SOC WELFARE..	1	0.0	16	2	100.0	15	1	-50.0	18	1	0.0	27	1	0.0	25
Upper Division .....				1		21	1	0.0	18	1	0.0	27	1	0.0	25
Graduate Level .....	1	0.0	16	1	0.0	9									
SCHOOL OF MEDICINE .....	171	36.8	14	151	-11.7	16	171	13.2	15	161	-5.8	16	161	0.0	16
Lower Division .....	2	0.0	23	3	50.0	69	8	166.7	44	8	0.0	44	8	0.0	44
Upper Division .....	24	-17.2	24	22	-8.3	26	23	4.5	21	25	8.7	18	23	-8.0	21
Graduate Level .....	145	54.3	12	126	-13.1	13	140	11.1	13	128	-8.6	14	130	1.6	13
SCHOOL OF NURSING .....	62	-12.7	17	60	-3.2	13	56	-6.7	13	64	14.3	12	97	51.6	12
Lower Division .....	3	0.0	21	6	100.0	11	6	0.0	9	7	16.7	10	19	171.4	8
Upper Division .....	45	-15.1	19	42	-6.7	14	32	-23.8	17	39	21.9	14	63	61.5	13
Graduate Level .....	14	-6.7	10	12	-14.3	8	18	50.0	7	18	0.0	8	15	-16.7	9
SCHOOL OF PUBLIC HEALTH .....	70	4.5	14	58	-17.1	14	53	-8.6	11	49	-7.5	11	49	0.0	10
Upper Division .....				1		14	1		8	1		12	1	0.0	8
Graduate Level .....	70	4.5	14	57	-18.6	14	52	-8.8	11	48	-7.7	11	48	0.0	10
SCHOOL OF SOCIAL WORK .....	43	4.9	19	49	14.0	18	51	4.1	18	47	-7.8	17	40	-14.9	19
Lower Division .....	1	0.0	36	1	0.0	33	1	0.0	37	1	0.0	30	1	0.0	17
Upper Division .....	6	0.0	22	9	50.0	21	8	-11.1	22	8	0.0	20	6	-25.0	23
Graduate Level .....	36	5.9	18	39	8.3	17	42	7.7	17	38	-9.5	16	33	-13.2	18
SCHOOL OF LAW .....	62	-1.6	19	57	-8.1	21	62	8.8	19	58	-6.5	20	58	0.0	21
Graduate Level .....	62	-1.6	19	57	-8.1	21	62	8.8	19	58	-6.5	20	58	0.0	21
MILITARY STUDIES .....	22	0.0	5	22	0.0	5	18	-18.2	6	18	0.0	6	18	0.0	6
Lower Division .....	14	-6.7	5	14	0.0	5	13	-7.1	6	13	0.0	6	12	-7.7	5
Upper Division .....	8	14.3	4	8	0.0	5	5	-37.5	6	5	0.0	8	6	20.0	7

1/ Excludes classes numbered -99 (Individual Instruction), 700 (Thesis Research) and 800 (Dissertation Research).

2/ In Fall 1998, the Graduate School of Library Studies was moved organizationally to the College of Arts & Sciences, Natural Sciences (Library and Information Studies).

These figures have been adjusted to reflect this and so differ from those reported previously.

SOURCE: Computer Report 3011C: "Number of Classes and Average Class Size."