

COURSE REGISTRATION REPORT

UNIVERSITY OF HAWAI'I

FALL 2003

Institutional Research Office

University of Hawai'i

April 2004

File Reference: Management and Planning Support Folder, Courses

Reports available online at: <http://www.hawaii.edu/iro/maps.htm>

COURSE REGISTRATION SUMMARY
UNIVERSITY OF HAWAI'I
FALL 2003

Course registration measures are generally at the highest they've been since Fall 1994 (Figures 1 thru 5). Course FTE is at 34,312, number of registrations is at 174,101 and SSH taught is at 504,766, all at a 9 year high. SSH increased 3% over the previous fall semester, mainly due to gains at UH Manoa which saw an overall 6% increase, and UH Hilo with an 8% increase (Table 2). SSH taught at the UH community colleges increased by less than one percent, the largest increases at Hawai'i CC (5%) and Windward CC (4%). By level, the SSH increases were driven by the upper division and graduate levels, which saw 7% and 6% increases respectively. Lower division SSH decreased 2%.

Total number of classes at 7,814 is a slight decrease from the previous fall (Table 3). UH Hilo had the largest percent increase in classes at 8%. Number of classes at UH Manoa and West O'ahu was comparable to last fall semester. At the University of Hawai'i Community Colleges, number of classes decreased 4% overall. Maui Community College had a decrease of 17%; most of the decreases were classes under Career and Technical Instruction (See Course Registration Report, University of Hawai'i Community Colleges, Fall 2003, Table 1A, Appendix F-2).

Average class size for Fall 2003 is back to 22 after a decline from Fall 1996 (Figure 5). From the previous fall, average class size increased at all levels (lower division, upper division, graduate level) and all campuses except UH Hilo, Honolulu CC and Kapi'olani CC where average class size remained the same (Table 3).

University of Hawai'i System - Fall Semesters

Figure 1
Number of Classes

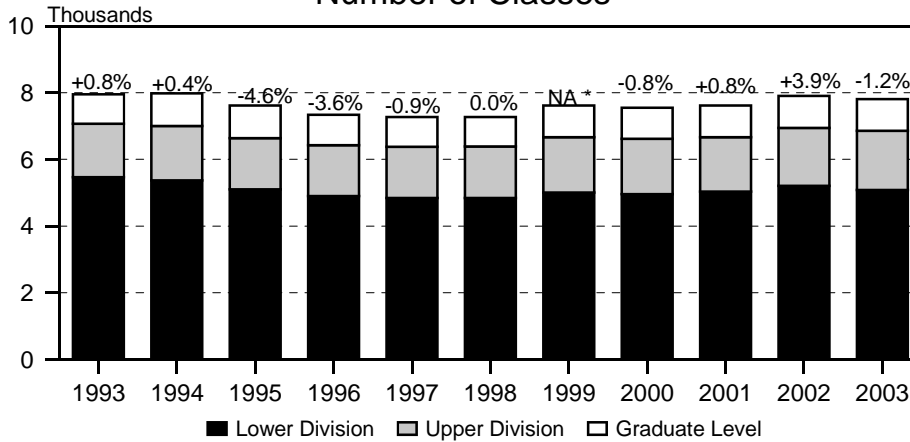


Figure 2
Student Registrations

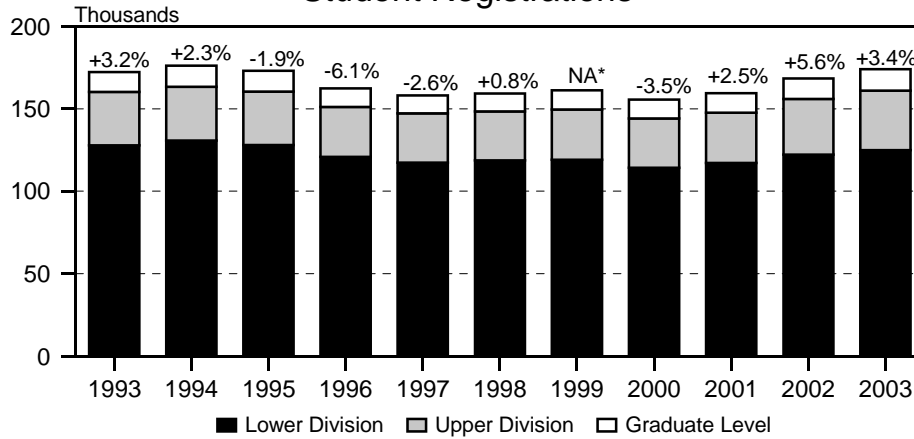
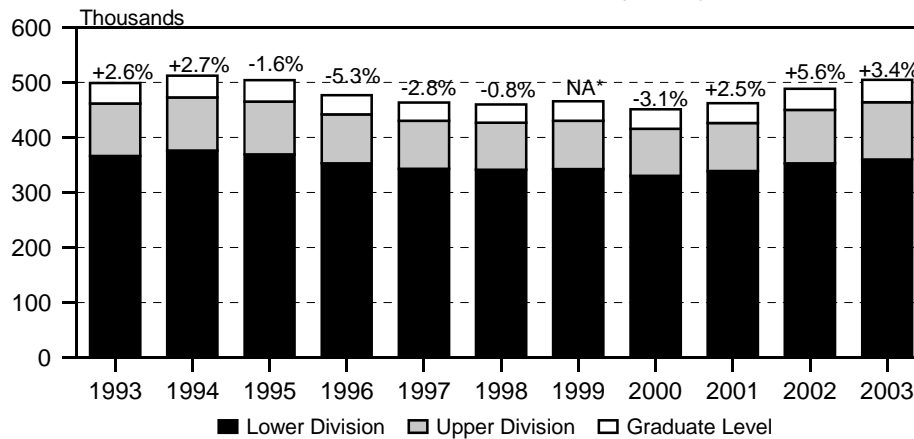


Figure 3
Student Semester Hours (SSH)



* Beginning Fall 1999, includes continuing education classes at Manoa and Hilo campuses and off-credit classes at the Honolulu Community College. Percentage changes for Fall 1999 are therefore not comparable with prior year.

University of Hawai'i System - Fall Semesters

Figure 4
Course FTE

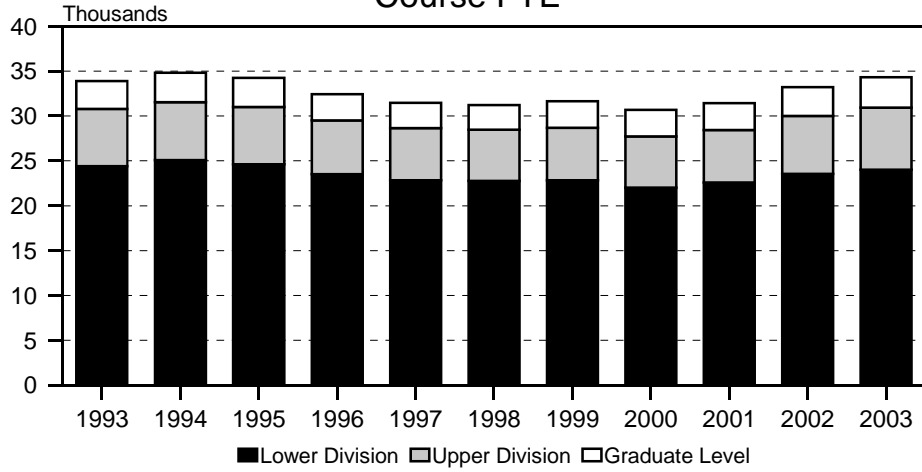


Figure 5
Average Class Size

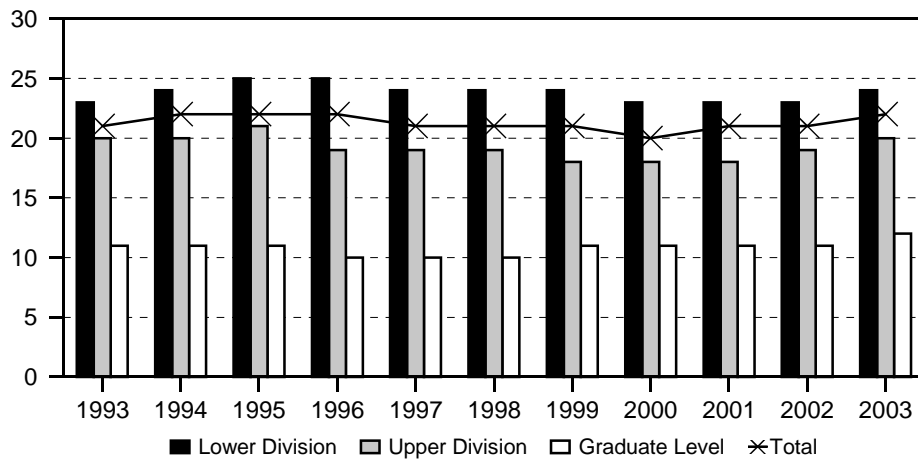


Figure 6
Average Class Size, by Unit

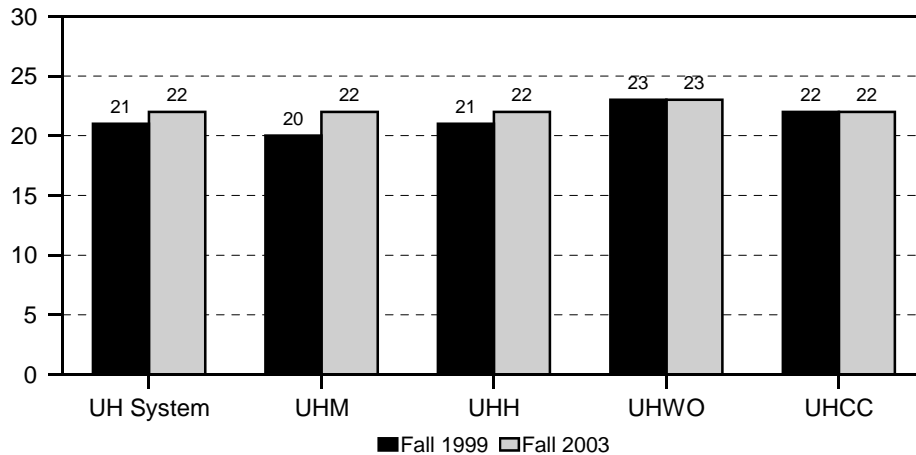


TABLE 1
 COURSE REGISTRATION SUMMARY BY CAMPUS
 UNIVERSITY OF HAWAII
 FALL 2003

CAMPUS AND LEVEL	COURSES	CLASSES 1/		SEMESTER HOURS	STUDENT REGIS	STUDENT SEM HRS	COURSE FTE
		No.	Avg Size				
TOTAL	4,892	7,814	22	21,898	174,101	504,766	34,312
Lower Division	2,588	5,083	24	14,528	124,988	360,318	24,013
Upper Division	1,387	1,778	20	4,980	35,993	104,125	6,931
Graduate Level	917	953	12	2,390	13,120	40,323	3,368
UH AT MANOA	2,371	3,502	22	9,164	79,131	226,357	15,758
Lower Division	430	1,138	33	2,851	37,311	103,324	6,887
Upper Division	1,032	1,417	20	3,934	28,762	82,847	5,514
Graduate Level	909	947	12	2,379	13,058	40,186	3,357
UH AT HILO	485	657	22	1,802	14,523	41,169	2,745
Lower Division	212	390	25	1,047	9,615	26,904	1,795
Upper Division	265	261	18	744	4,846	14,128	939
Graduate Level	8	6	9	11	62	137	11
UH - WEST O'AHU.....	90	100	23	302	2,385	7,150	478
COMMUNITY COLLEGES	1,946	3,555	22	10,630	78,062	230,090	15,331
Hawaii'	279	425	18	1,256	7,711	22,461	1,497
Honolulu	361	572	22	1,862	12,726	36,724	2,446
Kapi'olani	409	984	22	2,897	21,783	64,616	4,308
Kaua'i	167	211	16	597	3,477	9,924	658
Leeward	321	767	24	2,260	18,222	54,783	3,649
Maui	264	369	23	1,098	8,521	24,883	1,660
Windward	145	227	25	660	5,622	16,699	1,113

1/ Excludes classes numbered *93 (Cooperative Education), *99 (Individual Instruction), 486 (Senior Project, WO), 490 (Practicum, WO), 700 (Thesis Research), and 800 (Dissertation Research).

SOURCE: Computer Report 3011: "Course Registration Summary Report;" and
 Computer Report 3011C: "Number of Classes and Average Class Size."

TABLE 2
STUDENT SEMESTER HOURS (SSH) AND COURSE FTE
UNIVERSITY OF HAWAII
FALL 1999 TO FALL 2003

COLLEGE AND LEVEL	FALL 1999 1/			FALL 2000			FALL 2001			FALL 2002			FALL 2003		
	SSH No.	%C	COURSE FTE	SSH No.	%C	COURSE FTE	SSH No.	%C	COURSE FTE	SSH No.	%C	COURSE FTE	SSH No.	%C	COURSE FTE
TOTAL	465,818	NA	31,659	451,235	-3	30,667	462,524	3	31,432	488,368	6	33,195	504,766	3	34,312
Lower Division	342,516		22,834	330,172	-4	22,008	339,086	3	22,596	353,186	4	23,541	360,318	2	24,013
Upper Division	87,711		5,851	85,884	-2	5,720	87,380	2	5,822	96,999	11	6,473	104,125	7	6,931
Graduate Level	35,591		2,974	35,179	-1	2,939	36,058	2	3,014	38,183	6	3,181	40,323	6	3,368
UH AT MANOA	195,650	NA	13,643	191,238	-2	13,337	197,971	4	13,801	213,592	8	14,876	226,357	6	15,758
Lower Division	90,431		6,027	88,635	-2	5,908	93,762	6	6,251	98,834	5	6,590	103,324	5	6,887
Upper Division	69,712		4,650	67,516	-3	4,498	68,368	1	4,556	76,721	12	5,118	82,847	8	5,514
Graduate Level	35,507		2,966	35,087	-1	2,931	35,841	2	2,994	38,037	6	3,168	40,186	6	3,357
UH AT HILO	33,555	NA	2,238	34,512	3	2,302	35,771	4	2,389	38,010	6	2,542	41,169	8	2,745
Lower Division	22,095		1,471	22,742	3	1,518	23,189	2	1,547	24,669	6	1,646	26,904	9	1,795
Upper Division	11,376		759	11,678	3	776	12,365	6	822	13,195	7	883	14,128	7	939
Graduate Level	84		8	92	10	8	217	136	20	146	-33	13	137	-6	11
UH - WEST O'AHU	6,623	4	442	6,690	1	446	6,647	-1	444	7,083	7	472	7,150	1	478
COMMUNITY COLLEGES.....	229,990	NA	15,336	218,795	-5	14,582	222,135	2	14,798	229,683	3	15,305	230,090	< 1	15,331
Hawai'i	23,447	-2	1,565	21,475	-8	1,429	20,678	-4	1,378	21,444	4	1,428	22,461	5	1,497
Honolulu	42,742	NA	2,849	40,831	-4	2,722	40,641	0	2,704	39,945	-2	2,656	36,724	-8	2,446
Kapi'olani	64,968	2	4,333	61,783	-5	4,117	63,795	3	4,253	63,381	-1	4,225	64,616	2	4,308
Kaua'i	9,831	-6	654	9,161	-7	611	9,386	2	624	10,093	8	672	9,924	-2	658
Leeward	51,898	-4	3,460	50,086	-3	3,340	51,726	3	3,447	54,310	5	3,619	54,783	1	3,649
Maui	23,604	-1	1,576	22,417	-5	1,493	21,798	-3	1,452	24,462	12	1,633	24,883	2	1,660
Windward	13,500	1	899	13,042	-3	870	14,111	8	940	16,048	14	1,072	16,699	4	1,113

1/ Beginning Fall 1999, data for the Manoa and Hilo campuses includes continuing education classes. Data for Honolulu Community College includes off-campus credit classes. Percentage changes for Fall 1999 are therefore not comparable with prior year.

SOURCE: Computer Report 3011: "Course Registration Summary Report."

TABLE 3
NUMBER OF CLASSES AND AVERAGE CLASS SIZE 1/
UNIVERSITY OF HAWAI'I
FALL 1999 TO FALL 2003

COLLEGE AND LEVEL	FALL 1999 2/			FALL 2000			FALL 2001			FALL 2002			FALL 2003		
	CLASSES No.	% Chg	Avg Size	CLASSES No.	% Chg	Avg Size	CLASSES No.	% Chg	Avg Size	CLASSES No.	% Chg	Avg Size	CLASSES No.	% Chg	Avg Size
TOTAL	7,613	NA	21	7,550	-1	20	7,613	1	21	7,911	4	21	7,814	-1	22
Lower Division	5,005		24	4,959	-1	23	5,040	2	23	5,203	3	23	5,083	-2	24
Upper Division	1,666		18	1,661	0	18	1,631	-2	18	1,746	7	19	1,778	2	20
Graduate Level	942		11	930	-1	11	942	1	11	962	2	11	953	-1	12
UH AT MANOA	3,354	NA	20	3,299	-2	20	3,320	1	20	3,504	6	21	3,502	0	22
Lower Division	1,079		30	1,059	-2	30	1,101	4	31	1,147	4	31	1,138	-1	33
Upper Division	1,336		18	1,312	-2	18	1,285	-2	18	1,400	9	19	1,417	1	20
Graduate Level	939		11	928	-1	11	934	1	11	957	2	11	947	-1	12
UH AT HILO	565	NA	21	575	2	21	598	4	21	611	2	22	657	8	22
Lower Division	326		24	328	1	25	346	5	24	361	4	24	390	8	25
Upper Division	236		16	245	4	16	244	0	17	245	0	18	261	7	18
Graduate Level	3		9	2	-33	22	8	300	12	5	-38	12	6	20	9
UH - WEST O'AHU	94	4.4	23	104	11	21	102	-2	20	101	-1	22	100	-1	23
COMMUNITY COLLEGES....	3,600	NA	22	3,572	-1	21	3,593	1	21	3,695	3	21	3,555	-4	22
Hawai'i	407	0.5	19	425	4	17	410	-4	17	422	3	17	425	1	18
Honolulu	632	NA	24	624	-1	22	634	2	21	599	-6	22	572	-5	22
Kapi'olani	907	3.7	24	896	-1	23	908	1	23	963	6	22	984	2	22
Kaua'i	210	-0.5	16	207	-1	15	198	-4	16	219	11	15	211	-4	16
Leeward	815	-0.6	21	796	-2	21	801	1	21	813	1	22	767	-6	24
Maui	419	-1.9	20	413	-1	19	427	3	18	442	4	19	369	-17	23
Windward	210	2.9	22	211	0	21	215	2	22	237	10	23	227	-4	25

1/ Number of classes and average class size exclude courses with catalog numbers *93 (Cooperative Education), *99 (Individual Instruction), 486 (Senior Project, WO), 490 (Practicum, WO), 700 (Thesis Research), and 800 (Dissertation Research).

2/ Beginning Fall 1999, data for the Manoa and Hilo campuses includes continuing education classes. Data for Honolulu Community College includes off-campus credit classes. Percentage changes for Fall 1999 are therefore not comparable with prior year.

SOURCE: Computer Report 3011C: "Number of Classes and Average Class Size."