

COURSE REGISTRATION REPORT

UNIVERSITY OF HAWAII I

FALL 1997

Institutional Research Office

University of Hawai'i

January 1998

File Reference: Management and Planning Support Folder, Courses

Reports now available online at : <http://www2.hawaii.edu/iro/>

University of Hawai'i System - Fall Semesters

Figure 1
Number of Classes

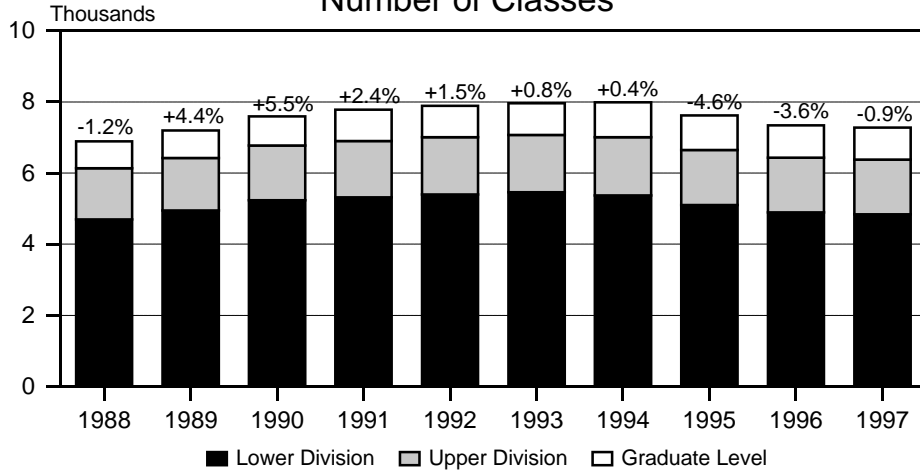


Figure 2
Student Registrations

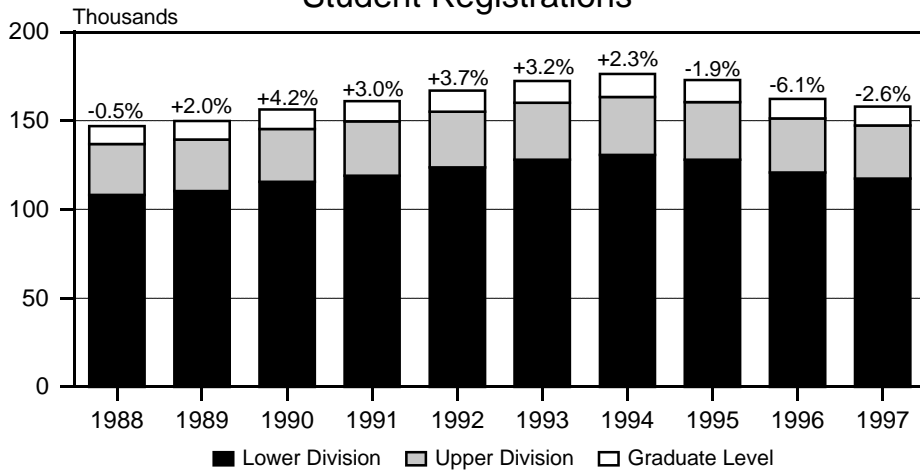


Figure 3
Student Semester Hours (SSH)

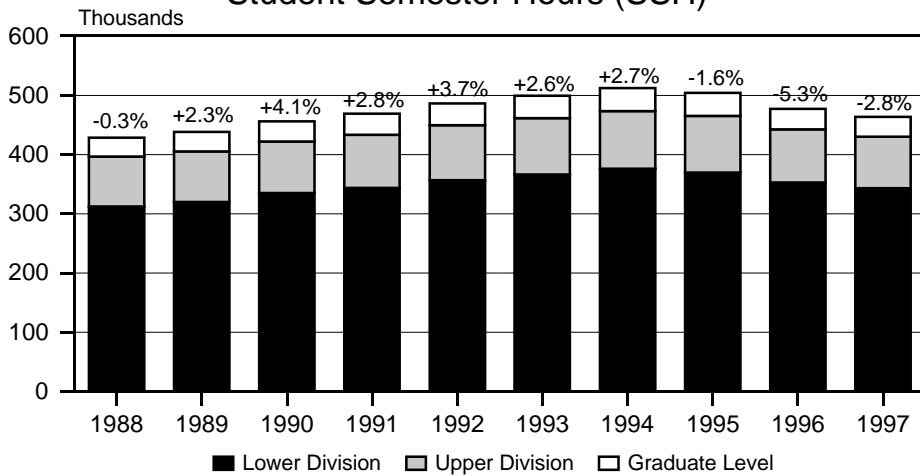


Figure 4
Course FTE

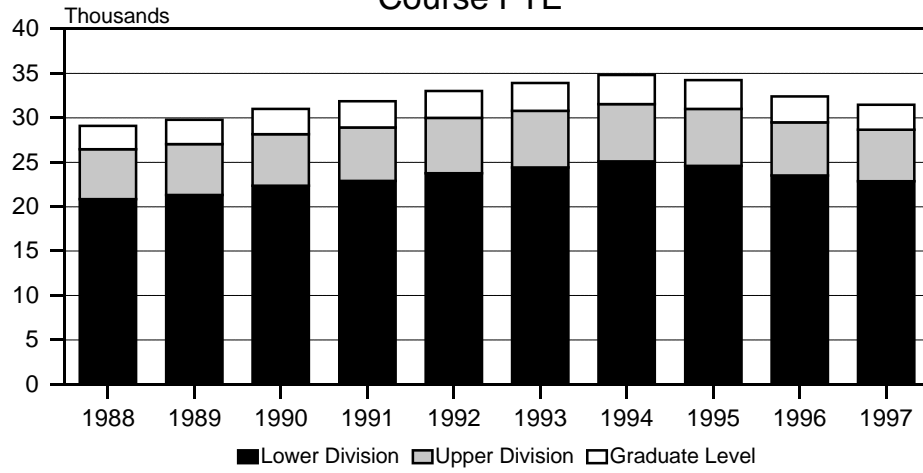


Figure 5
Average Class Size

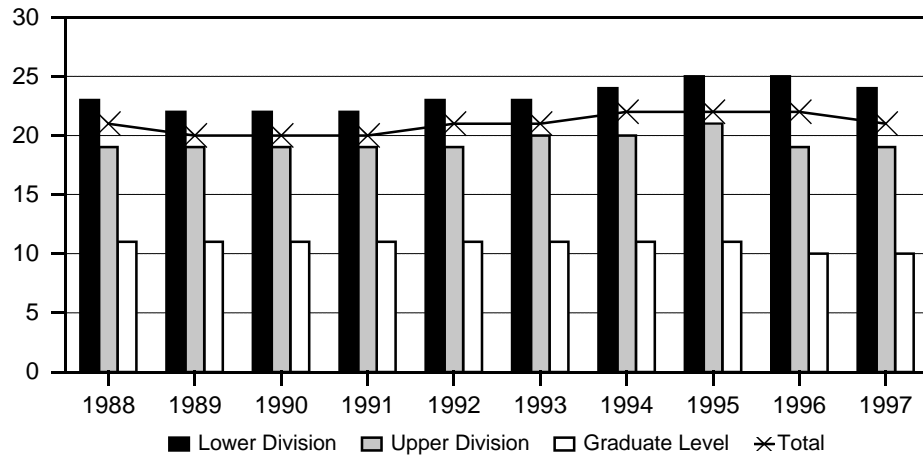


Figure 6
Average Class Size, by Unit

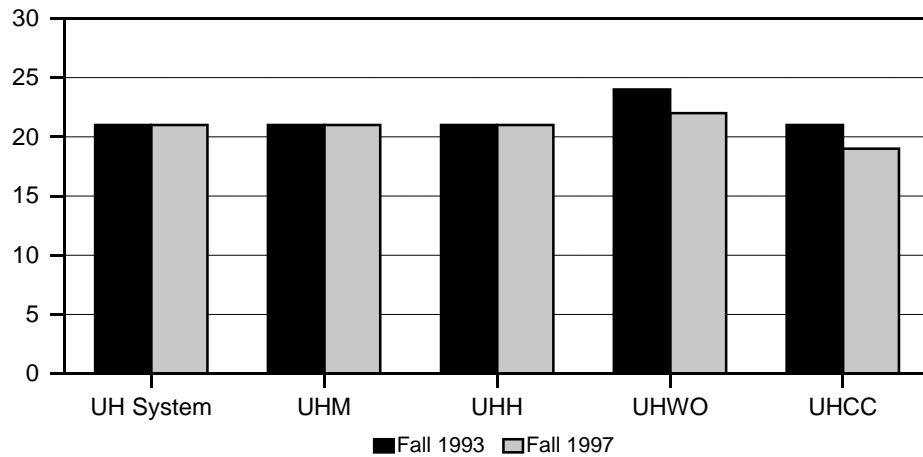


TABLE 1
 COURSE REGISTRATION SUMMARY BY CAMPUS
 UNIVERSITY OF HAWAII
 FALL 1997

CAMPUS AND LEVEL	COURSES	CLASSES *		SEMESTER HOURS	STUDENT REGIS	STUDENT SEM HRS	COURSE FTE
		No.	Avg Size				
TOTAL	4,670	7,276	21	20,712	158,061	463,648	31,450
Lower Division	2,446	4,843	24	14,156	117,295	343,026	22,850
Upper Division	1,313	1,536	19	4,334	29,969	87,229	5,815
Graduate Level	911	897	10	2,222	10,797	33,393	2,785
UH AT MANOA	2,302	3,192	21	8,493	68,672	197,732	13,734
Lower Division	407	1,081	31	2,878	33,698	94,147	6,270
Upper Division	985	1,214	20	3,393	24,180	70,199	4,680
Graduate Level	910	897	10	2,222	10,794	33,386	2,784
UH AT HILO	436	542	21	1,475	11,542	32,349	2,155
Lower Division	189	310	25	804	7,719	21,199	1,412
Upper Division	246	232	16	671	3,820	11,143	742
Graduate Level	1	0	0	0	3	7	1
UH - WEST O'AHU.....	82	90	22	270	1,969	5,887	393
COMMUNITY COLLEGES	1,850	3,452	22	10,474	75,878	227,680	15,168
Hawai'i	224	399	19	1,253	7,822	23,799	1,584
Honolulu	341	511	22	1,640	11,328	36,387	2,426
Kapi'olani	382	877	24	2,730	20,942	63,929	4,260
Kaua'i	167	219	18	692	4,026	12,099	803
Leeward	308	825	22	2,430	18,360	54,332	3,621
Maui	297	409	21	1,127	8,789	23,788	1,584
Windward	131	212	22	602	4,611	13,346	890

* Excludes 093 (Cooperative Education), 099 (Individual Instruction), 486 (Senior Project, WO), 490 (Practicum, WO), 700 (Thesis Research), and 800 (Dissertation Research).

TABLE 2
STUDENT SEMESTER HOURS (SSH) AND COURSE FTE
UNIVERSITY OF HAWAI'I
FALL 1993 TO FALL 1997

COLLEGE AND LEVEL	FALL 1993			FALL 1994			FALL 1995			FALL 1996			FALL 1997		
	SSH No.	%C	COURSE FTE	SSH No.	%C	COURSE FTE	SSH No.	%C	COURSE FTE	SSH No.	%C	COURSE FTE	SSH No.	%C	COURSE FTE
TOTAL	498,932	3	33,894	512,224	3	34,813	504,041	-2	34,252	477,226	-5	32,403	463,648	-3	31,450
Lower Division	366,187	3	24,419	376,205	3	25,086	369,361	-2	24,611	352,853	-4	23,522	343,026	-3	22,850
Upper Division	95,453	3	6,359	96,894	2	6,456	95,616	-1	6,374	89,455	-6	5,963	87,229	-2	5,815
Graduate Level	37,292	2	3,116	39,125	5	3,271	39,064	0	3,267	34,918	-11	2,918	33,393	-4	2,785
UH AT MANOA	220,309	2	15,317	223,005	1	15,531	222,268	0	15,481	204,654	-8	14,234	197,732	-3	13,734
Lower Division	104,783	3	6,987	105,114	0	7,012	105,567	0	7,039	96,739	-8	6,452	94,147	-3	6,270
Upper Division	78,234	0	5,214	78,766	1	5,248	77,637	-1	5,175	72,997	-6	4,864	70,199	-4	4,680
Graduate Level	37,292	2	3,116	39,125	5	3,271	39,064	0	3,267	34,918	-11	2,918	33,386	-4	2,784
UH AT HILO	34,761	11	2,315	34,809	0	2,320	34,054	-2	2,268	33,373	-2	2,223	32,349	-3	2,155
Lower Division	23,420	7	1,560	23,205	-1	1,548	22,492	-3	1,497	22,722	1	1,512	21,199	-7	1,412
Upper Division	11,341	21	755	11,604	2	772	11,562	0	771	10,651	-8	711	11,143	5	742
Graduate Level													7		1
UH - WEST O'AHU	5,878	1	390	6,524	11	436	6,417	-2	428	5,807	-10	388	5,887	1	393
COMMUNITY COLLEGES...	237,984	2	15,872	247,886	4	16,526	241,302	-3	16,075	233,392	-3	15,558	227,680	-2	15,168
Hawai'i	26,037	13	1,738	30,074	16	2,007	30,020	0	2,001	25,760	-14	1,718	23,799	-8	1,584
Honolulu	42,060	-1	2,806	42,146	0	2,811	39,384	-7	2,621	36,948	-6	2,466	36,387	-2	2,426
Kapi'olani	63,271	1	4,222	64,802	2	4,321	63,289	-2	4,214	65,021	3	4,332	63,929	-2	4,260
Kaua'i	11,972	-5	799	13,209	10	884	12,816	-3	853	12,469	-3	830	12,099	-3	803
Leeward	59,191	5	3,948	59,956	1	3,995	58,244	-3	3,883	55,472	-5	3,698	54,332	-2	3,621
Maui	21,042	0	1,400	23,217	10	1,544	23,154	0	1,543	24,132	4	1,607	23,788	-1	1,584
Windward	14,411	-5	959	14,482	0	964	14,395	-1	960	13,590	-6	907	13,346	-2	890

TABLE 3
NUMBER OF CLASSES AND AVERAGE CLASS SIZE *
UNIVERSITY OF HAWAI'I
FALL 1993 TO FALL 1997

COLLEGE AND LEVEL	FALL 1993			FALL 1994			FALL 1995			FALL 1996			FALL 1997		
	CLASSES No.	% Chg	Avg Size	CLASSES No.	% Chg	Avg Size	CLASSES No.	% Chg	Avg Size	CLASSES No.	% Chg	Avg Size	CLASSES No.	% Chg	Avg Size
TOTAL	7,958	0.8	21	7,986	0.4	22	7,617	-4.6	22	7,339	-3.6	22	7,276	-0.9	21
Lower Division	5,463	1.2	23	5,374	-1.6	24	5,104	-5.0	25	4,896	-4.1	25	4,843	-1.1	24
Upper Division	1,611	-0.1	20	1,635	1.5	20	1,539	-5.9	21	1,533	-0.4	19	1,536	0.2	19
Graduate Level	884	0.6	11	977	10.5	11	974	-0.3	11	910	-6.6	10	897	-1.4	10
UH AT MANOA	3,454	0.7	21	3,579	3.6	21	3,383	-5.5	22	3,241	-4.2	21	3,192	-1.5	21
Lower Division	1,261	2.6	30	1,275	1.1	29	1,175	-7.8	32	1,104	-6.0	31	1,081	-2.1	31
Upper Division	1,309	-1.0	20	1,327	1.4	20	1,234	-7.0	21	1,227	-0.6	20	1,214	-1.1	20
Graduate Level	884	0.6	11	977	10.5	11	974	-0.3	11	910	-6.6	10	897	-1.4	10
UH AT HILO	579	7.0	21	536	-7.4	22	509	-5.0	23	523	2.8	22	542	3.6	21
Lower Division	359	9.1	23	319	-11.1	26	295	-7.5	27	307	4.1	27	310	1.0	25
Upper Division	220	3.8	17	217	-1.4	17	214	-1.4	17	216	0.9	16	232	7.4	16
UH - WEST O'AHU	82	3.8	24	91	11.0	24	91	0.0	23	90	-1.1	21	90	0.0	22
COMMUNITY COLLEGES.	3,843	0.1	21	3,780	-1.6	22	3,634	-3.9	23	3,485	-4.1	22	3,452	-0.9	22
Hawai'i	440	7.1	21	467	6.1	22	478	2.4	22	425	-11.1	19	399	-6.1	19
Honolulu	568	-1.9	22	560	-1.4	23	547	-2.3	22	536	-2.0	21	511	-4.7	22
Kapi'olani	1,053	4.3	21	962	-8.6	23	912	-5.2	23	875	-4.1	24	877	0.2	24
Kaua'i	281	-3.1	17	274	-2.5	18	266	-2.9	18	229	-13.9	19	219	-4.4	18
Leeward	868	-1.6	23	888	2.3	23	839	-5.5	24	810	-3.5	23	825	1.9	22
Maui	400	-5.0	20	408	2.0	22	370	-9.3	24	400	8.1	22	409	2.3	21
Windward	233	-6.0	21	221	-5.2	23	222	0.5	23	210	-5.4	22	212	1.0	22

* Number of classes and average class size exclude courses with catalog numbers 093 (Cooperative Education), 099 (Individual Instruction), 486 (Senior Project, WO), 490 (Practicum, WO), 700 (Thesis Research), and 800 (Dissertation Research).