

COURSE REGISTRATION REPORT

UNIVERSITY OF HAWAI'I

FALL 1999

Institutional Research Office

University of Hawai'i

March 2000

File Reference: Management and Planning Support Folder, Courses

Reports available online at: <http://www.hawaii.edu/iro/maps.htm>

University of Hawai'i System - Fall Semesters

Figure 1
Number of Classes

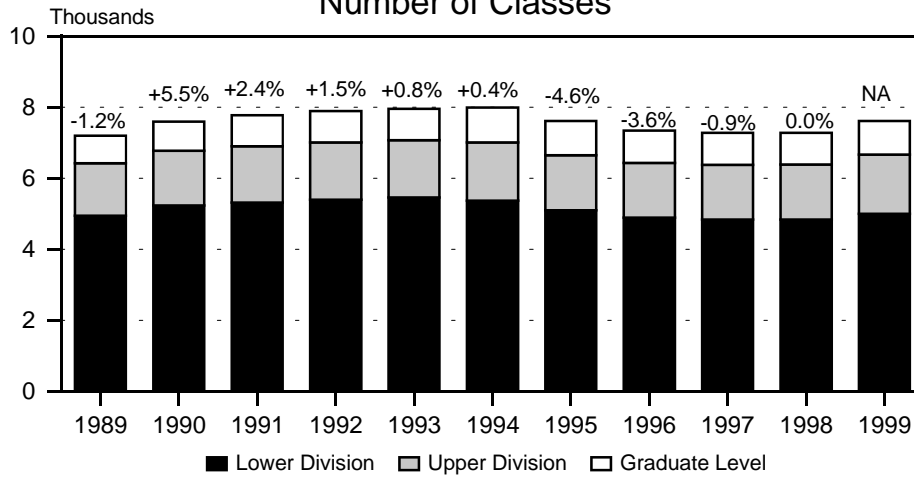


Figure 2
Student Registrations

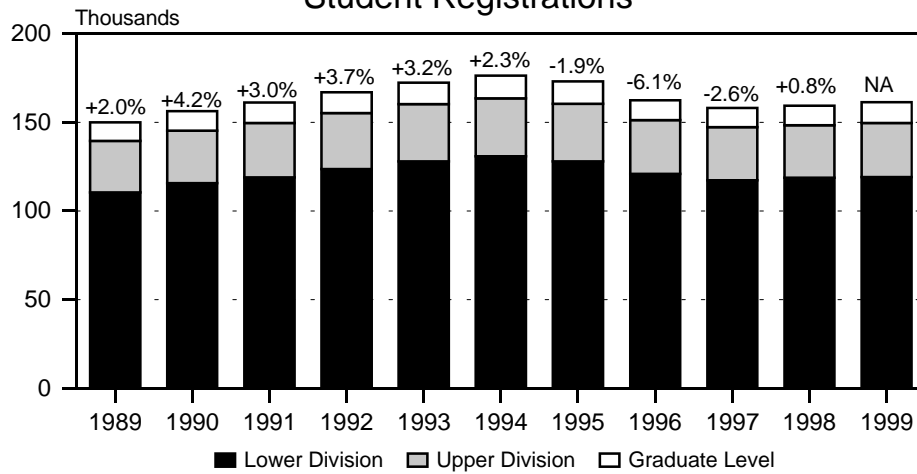


Figure 3
Student Semester Hours (SSH)

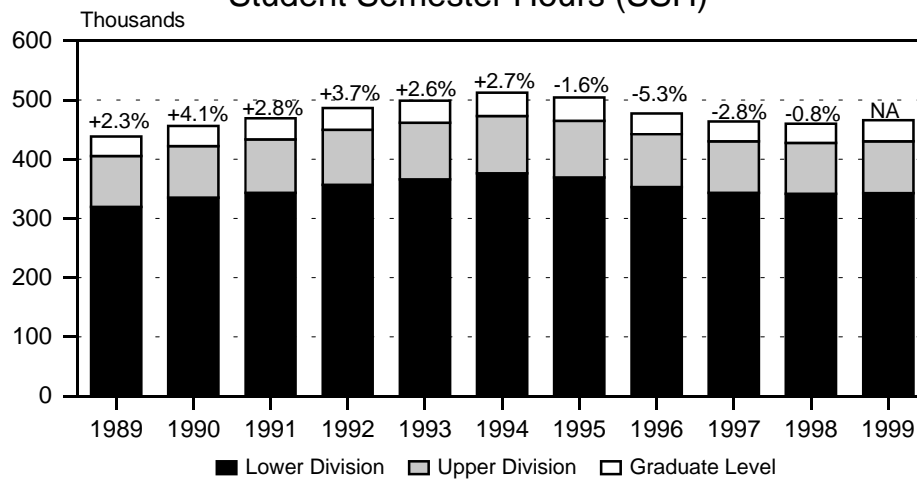


Figure 4
Course FTE

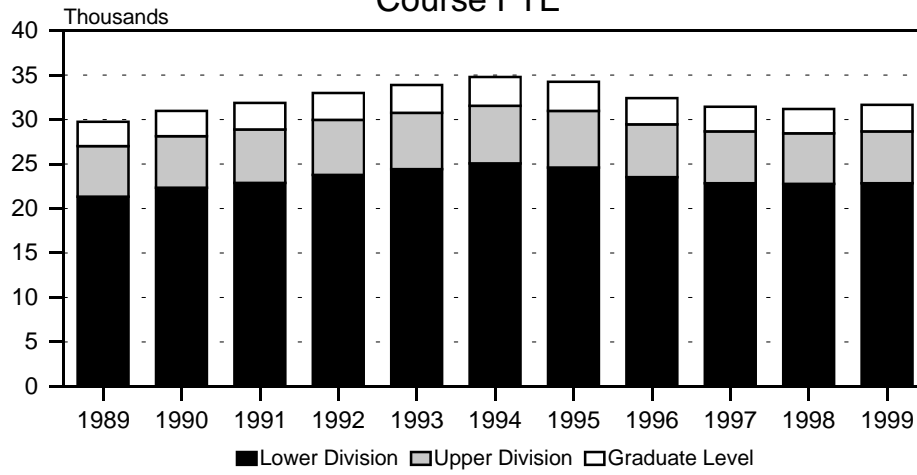


Figure 5
Average Class Size

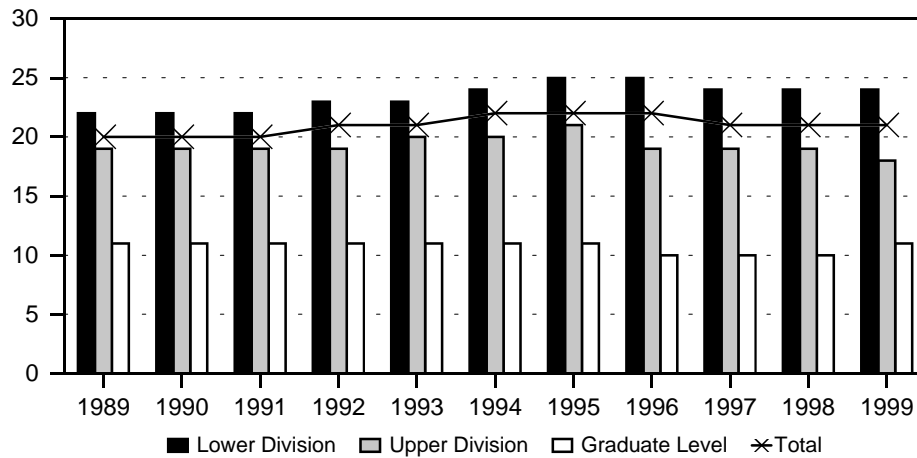


Figure 6
Average Class Size, by Unit

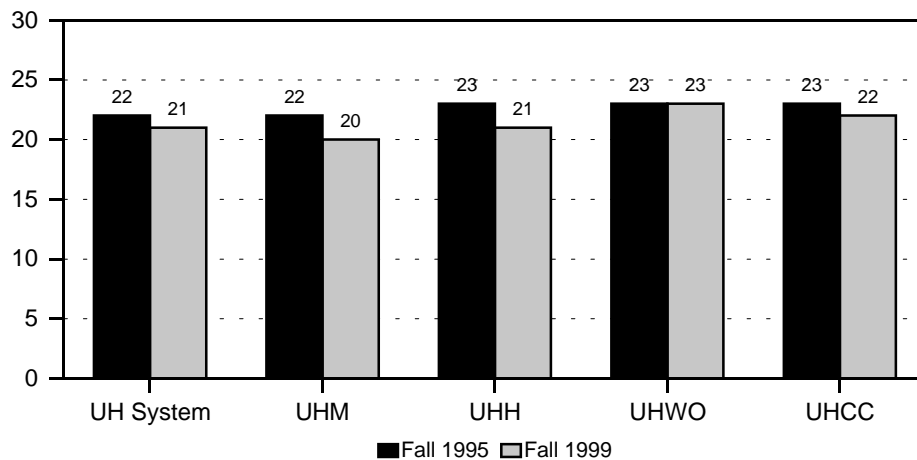


TABLE 1
 COURSE REGISTRATION SUMMARY BY CAMPUS
 UNIVERSITY OF HAWAII
 FALL 1999

CAMPUS AND LEVEL	COURSES	CLASSES *		SEMESTER HOURS	STUDENT REGIS	STUDENT SEM HRS	COURSE FTE
		No.	Avg Size				
TOTAL	4,810	7,613	21	21,667	161,241	465,818	31,659
Lower Division	2,517	5,005	24	14,592	119,101	342,516	22,834
Upper Division	1,357	1,666	18	4,680	30,473	87,711	5,851
Graduate Level	936	942	11	2,395	11,667	35,591	2,974
UH AT MANOA	2,370	3,354	20	8,917	68,624	195,650	13,643
Lower Division	413	1,079	30	2,824	32,646	90,431	6,027
Upper Division	1,024	1,336	18	3,707	24,339	69,712	4,650
Graduate Level	933	939	11	2,386	11,639	35,507	2,966
UH AT HILO	442	565	21	1,561	11,906	33,555	2,238
Lower Division	192	326	24	865	7,959	22,095	1,471
Upper Division	247	236	16	687	3,919	11,376	759
Graduate Level	3	3	9	9	28	84	8
UH - WEST O'AHU.....	86	94	23	286	2,215	6,623	442
COMMUNITY COLLEGES ...	1,912	3,600	22	10,903	78,496	229,990	15,336
Hawai'i	242	407	19	1,256	7,834	23,447	1,565
Honolulu	395	632	24	2,013	15,246	42,742	2,849
Kapi'olani	372	907	24	2,750	21,664	64,968	4,333
Kaua'i	167	210	16	648	3,320	9,831	654
Leeward	305	815	21	2,429	17,285	51,898	3,460
Maui	299	419	20	1,216	8,464	23,604	1,576
Windward	132	210	22	591	4,683	13,500	899

* Excludes classes numbered *93 (Cooperative Education), *99 (Individual Instruction), 486 (Senior Project, WO), 490 (Practicum, WO), 700 (Thesis Research), and 800 (Dissertation Research).

TABLE 2
STUDENT SEMESTER HOURS (SSH) AND COURSE FTE
UNIVERSITY OF HAWAII
FALL 1995 TO FALL 1999

COLLEGE AND LEVEL	FALL 1995			FALL 1996			FALL 1997			FALL 1998			FALL 1999 1/		
	SSH No.	%C	COURSE FTE	SSH No.	%C	COURSE FTE	SSH No.	%C	COURSE FTE	SSH No.	%C	COURSE FTE	SSH No.	%C	COURSE FTE
TOTAL	504,041	-2	34,252	477,226	-5	32,403	463,648	-3	31,450	459,996	-1	31,202	465,818	NA	31,659
Lower Division	369,361	-2	24,611	352,853	-4	23,522	343,026	-3	22,850	341,609	0	22,763	342,516		22,834
Upper Division	95,616	-1	6,374	89,455	-6	5,963	87,229	-2	5,815	85,616	-2	5,704	87,711		5,851
Graduate Level	39,064	0	3,267	34,918	-11	2,918	33,393	-4	2,785	32,771	-2	2,735	35,591		2,974
UH AT MANOA	222,268	0	15,481	204,654	-8	14,234	197,732	-3	13,734	192,858	-2	13,400	195,650	NA	13,643
Lower Division	105,567	0	7,039	96,739	-8	6,452	94,147	-3	6,270	91,704	-3	6,109	90,431		6,027
Upper Division	77,637	-1	5,175	72,997	-6	4,864	70,199	-4	4,680	68,443	-3	4,561	69,712		4,650
Graduate Level	39,064	0	3,267	34,918	-11	2,918	33,386	-4	2,784	32,711	-2	2,730	35,507		2,966
UH AT HILO	34,054	-2	2,268	33,373	-2	2,223	32,349	-3	2,155	32,915	2	2,192	33,555	NA	2,238
Lower Division	22,492	-3	1,497	22,722	1	1,512	21,199	-7	1,412	22,077	4	1,470	22,095		1,471
Upper Division	11,562	0	771	10,651	-8	711	11,143	5	742	10,778	-3	717	11,376		759
Graduate Level							7		1	60	757	5	84		8
UH - WEST O'AHU	6,417	-2	428	5,807	-10	388	5,887	1	393	6,395	9	426	6,623	4	442
COMMUNITY COLLEGES.....	241,302	-3	16,075	233,392	-3	15,558	227,680	-2	15,168	227,828	0	15,184	229,990	NA	15,336
Hawaii'i	30,020	0	2,001	25,760	-14	1,718	23,799	-8	1,584	23,893	0	1,596	23,447	-2	1,565
Honolulu	39,384	-7	2,621	36,948	-6	2,466	36,387	-2	2,426	38,361	5	2,554	42,742	NA	2,849
Kapi'olani	63,289	-2	4,214	65,021	3	4,332	63,929	-2	4,260	63,606	-1	4,239	64,968	2	4,333
Kaua'i	12,816	-3	853	12,469	-3	830	12,099	-3	803	10,505	-13	699	9,831	-6	654
Leeward	58,244	-3	3,883	55,472	-5	3,698	54,332	-2	3,621	54,163	0	3,613	51,898	-4	3,460
Maui	23,154	0	1,543	24,132	4	1,607	23,788	-1	1,584	23,909	1	1,592	23,604	-1	1,576
Windward	14,395	-1	960	13,590	-6	907	13,346	-2	890	13,391	0	891	13,500	1	899

1/ Beginning Fall 1999, data for the Manoa and Hilo campuses includes continuing education classes. Data for Honolulu Community College includes off-campus credit classes. Percentage changes for Fall 1999 are therefore not comparable with prior year.

TABLE 3
NUMBER OF CLASSES AND AVERAGE CLASS SIZE *
UNIVERSITY OF HAWAI'I
FALL 1995 TO FALL 1999

COLLEGE AND LEVEL	FALL 1995			FALL 1996			FALL 1997			FALL 1998			FALL 1999 1/		
	CLASSES No.	% Chg	Avg Size	CLASSES No.	% Chg	Avg Size	CLASSES No.	% Chg	Avg Size	CLASSES No.	% Chg	Avg Size	CLASSES No.	% Chg	Avg Size
TOTAL	7,617	-4.6	22	7,339	-3.6	22	7,276	-0.9	21	7,274	0.0	21	7,613	NA	21
Lower Division	5,104	-5.0	25	4,896	-4.1	25	4,843	-1.1	24	4,838	-0.1	24	5,005		24
Upper Division	1,539	-5.9	21	1,533	-0.4	19	1,536	0.2	19	1,550	0.9	19	1,666		18
Graduate Level	974	-0.3	11	910	-6.6	10	897	-1.4	10	886	-1.2	10	942		11
UH AT MANOA	3,383	-5.5	22	3,241	-4.2	21	3,192	-1.5	21	3,139	-1.7	21	3,354	NA	20
Lower Division	1,175	-7.8	32	1,104	-6.0	31	1,081	-2.1	31	1,040	-3.8	32	1,079		30
Upper Division	1,234	-7.0	21	1,227	-0.6	20	1,214	-1.1	20	1,215	0.1	19	1,336		18
Graduate Level	974	-0.3	11	910	-6.6	10	897	-1.4	10	884	-1.4	10	939		11
UH AT HILO	509	-5.0	23	523	2.8	22	542	3.6	21	585	7.9	20	565	NA	21
Lower Division	295	-7.5	27	307	4.1	27	310	1.0	25	338	9.0	24	326		24
Upper Division	214	-1.4	17	216	0.9	16	232	7.4	16	245	5.6	15	236		16
UH - WEST O'AHU	91	0.0	23	90	-1.1	21	90	0.0	22	90	0.0	23	94	4.4	23
COMMUNITY COLLEGES....	3,634	-3.9	23	3,485	-4.1	22	3,452	-0.9	22	3,460	0.2	22	3,600	NA	22
Hawai'i	478	2.4	22	425	-11.1	19	399	-6.1	19	405	1.5	19	407	0.5	19
Honolulu	547	-2.3	22	536	-2.0	21	511	-4.7	22	518	1.4	27	632	NA	24
Kapi'olani	912	-5.2	23	875	-4.1	24	877	0.2	24	875	-0.2	24	907	3.7	24
Kaua'i	266	-2.9	18	229	-13.9	19	219	-4.4	18	211	-3.7	16	210	-0.5	16
Leeward	839	-5.5	24	810	-3.5	23	825	1.9	22	820	-0.6	22	815	-0.6	21
Maui	370	-9.3	24	400	8.1	22	409	2.3	21	427	4.4	20	419	-1.9	20
Windward	222	0.5	23	210	-5.4	22	212	1.0	22	204	-3.8	23	210	2.9	22

* Number of classes and average class size exclude courses with catalog numbers *93 (Cooperative Education), *99 (Individual Instruction), 486 (Senior Project, WO), 490 (Practicum, WO), 700 (Thesis Research), and 800 (Dissertation Research).

1/ Beginning Fall 1999, data for the Manoa and Hilo campuses includes continuing education classes. Data for Honolulu Community College includes off-campus credit classes. Percentage changes for Fall 1999 are therefore not comparable with prior year.