

**COURSE REGISTRATION REPORT**  
**UNIVERSITY OF HAWAI'I**  
**SPRING 2002**

Institutional Research Office  
University of Hawai'i  
August 2002

File Reference: Management and Planning Support Folder, Courses

Reports available online at: <http://www.hawaii.edu/iro/maps.htm>

# University of Hawai'i System, Spring Semesters 1998 - 2002

Figure 1: Total Student Semester Hours (SSH)

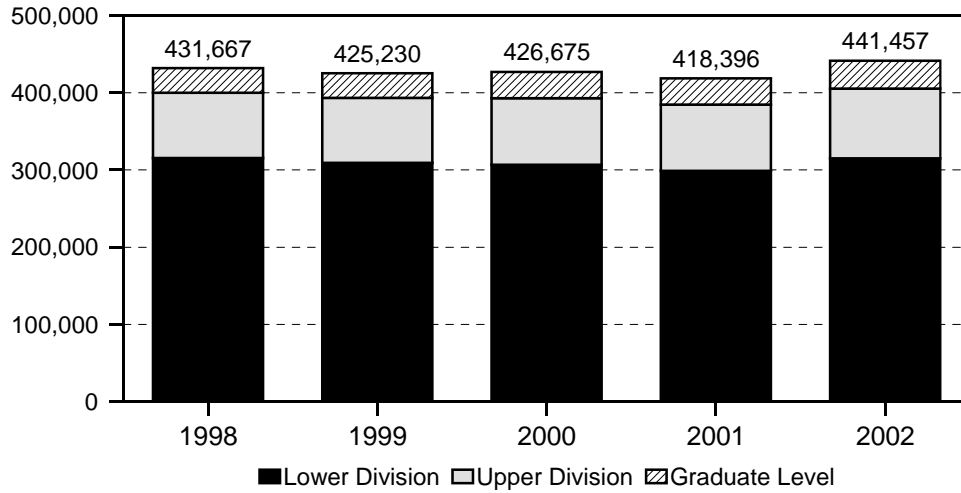


Figure 2: Average Class Size

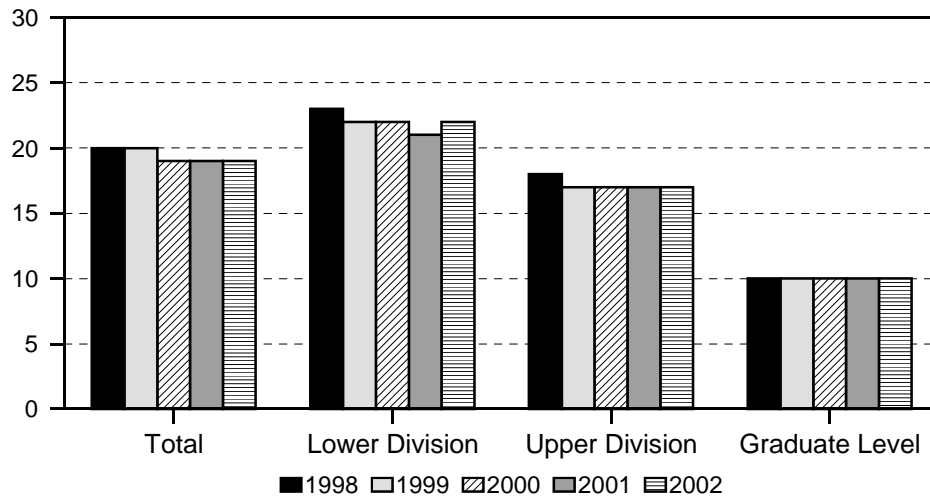


Figure 3: Average Class Size, by Unit

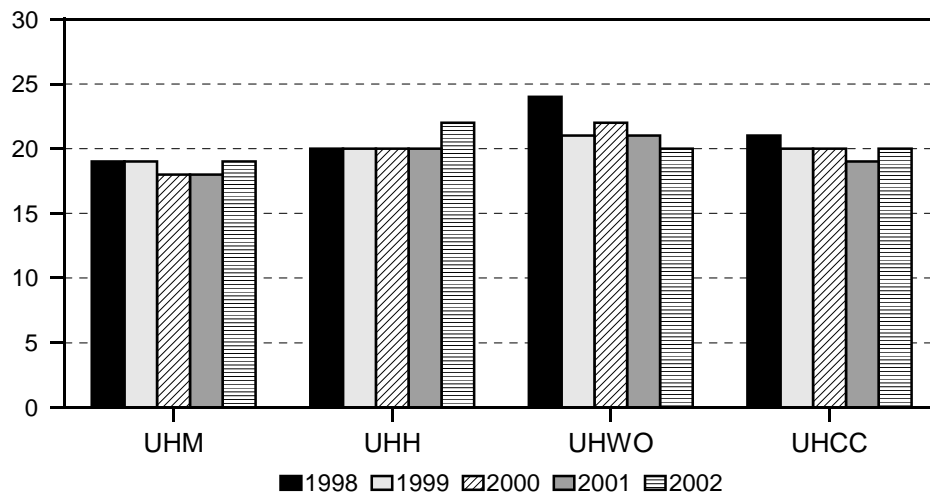


TABLE 1  
 COURSE REGISTRATION SUMMARY, BY CAMPUS  
 UNIVERSITY OF HAWAI'I  
 SPRING 2002

| CAMPUS AND COURSE LEVEL  | COURSES | CLASSES 1/<br>No. Avg Size | SEM HOURS | STUDENT REGIS | STUDENT SEM HRS | COURSE FTE |
|--------------------------|---------|----------------------------|-----------|---------------|-----------------|------------|
| TOTAL .....              | 4,854   | 7,593 19                   | 21,633    | 151,268       | 441,457         | 30,032     |
| Lower Division .....     | 2,541   | 4,870 22                   | 14,160    | 108,409       | 314,974         | 20,996     |
| Upper Division .....     | 1,386   | 1,726 17                   | 4,948     | 30,943        | 90,395          | 6,021      |
| Graduate Level .....     | 927     | 997 10                     | 2,525     | 11,916        | 36,088          | 3,015      |
| UH AT MANOA 2/ .....     | 2,377   | 3,435 19                   | 9,199     | 66,389        | 190,634         | 13,300     |
| Lower Division .....     | 424     | 1,076 28                   | 2,779     | 30,536        | 84,809          | 5,647      |
| Upper Division .....     | 1,035   | 1,370 17                   | 3,910     | 24,048        | 69,933          | 4,655      |
| Graduate Level .....     | 918     | 989 10                     | 2,510     | 11,805        | 35,892          | 2,998      |
| UH AT HILO 2/.....       | 467     | 554 22                     | 1,526     | 12,141        | 34,289          | 2,292      |
| Lower Division .....     | 198     | 299 25                     | 805       | 7,411         | 20,450          | 1,365      |
| Upper Division .....     | 260     | 247 18                     | 706       | 4,619         | 13,643          | 910        |
| Graduate Level .....     | 9       | 8 14                       | 15        | 111           | 196             | 17         |
| UH - WEST O'AHU .....    | 91      | 109 20                     | 332       | 2,276         | 6,819           | 456        |
| UH COMMUNITY COLLEGES... | 1,919   | 3,495 20                   | 10,576    | 70,462        | 209,715         | 13,984     |
| Hawai'i .....            | 256     | 375 17                     | 1,134     | 6,574         | 19,322          | 1,288      |
| Honolulu .....           | 340     | 574 22                     | 1,877     | 12,527        | 37,566          | 2,504      |
| Kapi'olani .....         | 408     | 924 22                     | 2,858     | 20,341        | 61,543          | 4,101      |
| Kaua'i .....             | 168     | 205 15                     | 612       | 3,102         | 8,879           | 594        |
| Leeward .....            | 319     | 739 21                     | 2,207     | 15,700        | 47,202          | 3,144      |
| Maui .....               | 291     | 472 16                     | 1,301     | 7,579         | 21,628          | 1,445      |
| Windward .....           | 137     | 206 22                     | 587       | 4,639         | 13,575          | 908        |

1/ Excludes 093 (Cooperative Education), 099 (Individual Instruction), 486 (Senior Project, WO), 490 (Practicum, WO), 700 (Thesis Research), and 800 (Dissertation Research) courses.

2/ Beginning Spring 2000, data for the Manoa and Hilo campuses includes continuing education classes.

TABLE 2  
STUDENT SEMESTER HOURS (SSH) AND COURSE FTE  
UNIVERSITY OF HAWAII  
SPRING 1998 TO SPRING 2002

| COLLEGE AND LEVEL        | SPRING 1998 |     |            | SPRING 1999 1/ |       |            | SPRING 2000 2/ |    |            | SPRING 2001 |    |            | SPRING 2002 |     |            |
|--------------------------|-------------|-----|------------|----------------|-------|------------|----------------|----|------------|-------------|----|------------|-------------|-----|------------|
|                          | No.         | %C  | COURSE FTE | No.            | %C    | COURSE FTE | No.            | %C | COURSE FTE | No.         | %C | COURSE FTE | No.         | %C  | COURSE FTE |
| TOTAL .....              | 431,667     | -1  | 29,292     | 425,230        | -1    | 28,874     | 426,675        | NA | 29,002     | 418,396     | -2 | 28,465     | 441,457     | 6   | 30,032     |
| Lower Division .....     | 315,315     | 0   | 21,010     | 309,104        | -2    | 20,603     | 306,894        |    | 20,449     | 298,764     | -3 | 19,918     | 314,974     | 5   | 20,996     |
| Upper Division .....     | 84,851      | -2  | 5,648      | 84,259         | -1    | 5,619      | 85,903         |    | 5,728      | 85,757      | -0 | 5,719      | 90,395      | 5   | 6,021      |
| Graduate Level .....     | 31,501      | -6  | 2,634      | 31,867         | 1     | 2,652      | 33,878         |    | 2,825      | 33,875      | 0  | 2,828      | 36,088      | 7   | 3,015      |
| UH AT MANOA .....        | 185,281     | -3  | 12,875     | 179,219        | -3    | 12,469     | 182,497        | NA | 12,727     | 179,829     | -2 | 12,557     | 190,634     | 6   | 13,300     |
| Lower Division .....     | 86,056      | -2  | 5,732      | 81,435         | -5    | 5,428      | 81,202         |    | 5,410      | 79,418      | -2 | 5,293      | 84,809      | 7   | 5,647      |
| Upper Division .....     | 67,727      | -2  | 4,509      | 66,321         | -2    | 4,423      | 67,492         |    | 4,499      | 66,621      | -1 | 4,443      | 69,933      | 5   | 4,655      |
| Graduate Level .....     | 31,498      | -5  | 2,634      | 31,463         | 0     | 2,618      | 33,803         |    | 2,818      | 33,790      | 0  | 2,821      | 35,892      | 6   | 2,998      |
| UH AT HILO .....         | 29,984      | -2  | 1,993      | 30,992         | 3     | 2,073      | 31,819         | NA | 2,125      | 32,239      | 1  | 2,152      | 34,289      | 6   | 2,292      |
| Lower Division .....     | 18,721      | -2  | 1,245      | 18,939         | 1     | 1,263      | 19,563         |    | 1,306      | 19,638      | 0  | 1,310      | 20,450      | 4   | 1,365      |
| Upper Division .....     | 11,260      | -3  | 748        | 11,649         | 3     | 776        | 12,181         |    | 812        | 12,516      | 3  | 835        | 13,643      | 9   | 910        |
| Graduate Level 3/ .....  | 3           | -95 |            | 404            | 13367 | 34         | 75             |    | 7          | 85          | 13 | 7          | 196         | 131 | 17         |
| UH - WEST O'AHU .....    | 5,864       | 13  | 391        | 6,289          | 7     | 420        | 6,230          | -1 | 417        | 6,620       | 6  | 441        | 6,819       | 3   | 456        |
| UH COMMUNITY COLLEGES... | 210,538     | 0   | 14,033     | 208,730        | -1    | 13,912     | 206,129        | -1 | 13,733     | 199,708     | -3 | 13,315     | 209,715     | 5   | 13,984     |
| Hawaii'i .....           | 21,780      | -5  | 1,454      | 21,665         | -1    | 1,442      | 20,184         | -7 | 1,343      | 19,162      | -5 | 1,277      | 19,322      | 1   | 1,288      |
| Honolulu .....           | 35,156      | 8   | 2,344      | 35,024         | NA    | 2,335      | 37,848         | 8  | 2,520      | 36,674      | -3 | 2,444      | 37,566      | 2   | 2,504      |
| Kapi'olani .....         | 58,897      | 1   | 3,923      | 59,677         | 1     | 3,984      | 59,602         | 0  | 3,974      | 57,245      | -4 | 3,815      | 61,543      | 8   | 4,101      |
| Kaua'i .....             | 10,720      | -5  | 717        | 9,594          | -11   | 638        | 8,730          | -9 | 585        | 8,131       | -7 | 544        | 8,879       | 9   | 594        |
| Leeward .....            | 49,726      | -1  | 3,315      | 49,089         | -1    | 3,270      | 46,322         | -6 | 3,087      | 45,942      | -1 | 3,064      | 47,202      | 3   | 3,144      |
| Maui .....               | 22,076      | 0   | 1,470      | 21,412         | -3    | 1,427      | 21,318         | 0  | 1,418      | 20,424      | -4 | 1,359      | 21,628      | 6   | 1,445      |
| Windward .....           | 12,183      | -1  | 810        | 12,269         | 1     | 816        | 12,125         | -1 | 806        | 12,130      | 0  | 812        | 13,575      | 12  | 908        |

1/ Beginning Spring 1999, data for Honolulu Community College includes off-campus credit classes. Percentage changes for Spring 1999 are not comparable with prior year.

2/ Beginning Spring 2000, data for Manoa and Hilo campuses includes continuing education classes. Percentage changes for Spring 2000 are not comparable with prior year.

3/ In Spring 1999, Teacher Education and Curriculum Studies was added which significantly increased Student Semester Hours (SSH) at the graduate level.

TABLE 3  
NUMBER OF CLASSES AND AVERAGE CLASS SIZE 1/  
UNIVERSITY OF HAWAI'I  
SPRING 1998 TO SPRING 2002

| COLLEGE AND LEVEL        | SPRING 1998 |          | SPRING 1999 |          | SPRING 2000 |          | SPRING 2001 |          | SPRING 2002 |          |
|--------------------------|-------------|----------|-------------|----------|-------------|----------|-------------|----------|-------------|----------|
|                          | No.         | Avg Size | No.         | Avg Size | No.         | Avg Size | No.         | Avg Size | No.         | Avg Size |
| TOTAL .....              | 7,263       | 20       | 7,259       | 20       | 7,400       | 19       | 7,423       | 19       | 7,593       | 19       |
| Lower Division .....     | 4,778       | 23       | 4,757       | 22       | 4,756       | 22       | 4,747       | 21       | 4,870       | 22       |
| Upper Division .....     | 1,574       | 18       | 1,597       | 17       | 1,686       | 17       | 1,720       | 17       | 1,726       | 17       |
| Graduate Level .....     | 911         | 10       | 905         | 10       | 958         | 10       | 956         | 10       | 997         | 10       |
| UH AT MANOA 2/ .....     | 3,215       | 19       | 3,200       | 19       | 3,363       | 18       | 3,343       | 18       | 3,435       | 19       |
| Lower Division .....     | 1,063       | 29       | 1,045       | 28       | 1,053       | 28       | 1,032       | 28       | 1,076       | 28       |
| Upper Division .....     | 1,241       | 18       | 1,259       | 17       | 1,357       | 17       | 1,359       | 16       | 1,370       | 17       |
| Graduate Level .....     | 911         | 10       | 896         | 10       | 953         | 10       | 952         | 10       | 989         | 10       |
| UH AT HILO 2/ .....      | 537         | 20       | 542         | 20       | 537         | 20       | 567         | 20       | 554         | 22       |
| Lower Division .....     | 286         | 24       | 292         | 24       | 294         | 24       | 302         | 23       | 299         | 25       |
| Upper Division .....     | 251         | 15       | 241         | 16       | 238         | 17       | 261         | 16       | 247         | 18       |
| Graduate Level .....     |             |          | 9           | 23       | 5           | 6        | 4           | 11       | 8           | 14       |
| UH - WEST O'AHU .....    | 82          | 24       | 97          | 21       | 91          | 22       | 100         | 21       | 109         | 20       |
| UH COMMUNITY COLLEGES... | 3,429       | 21       | 3,420       | 20       | 3,409       | 20       | 3,413       | 19       | 3,495       | 20       |
| Hawai'i .....            | 382         | 18       | 391         | 18       | 386         | 17       | 398         | 16       | 375         | 17       |
| Honolulu .....           | 527         | 22       | 531         | 22       | 579         | 22       | 566         | 20       | 574         | 22       |
| Kapi'olani .....         | 900         | 22       | 907         | 22       | 897         | 22       | 892         | 21       | 924         | 22       |
| Kaua'i .....             | 219         | 16       | 206         | 15       | 201         | 15       | 198         | 14       | 205         | 15       |
| Leeward .....            | 798         | 21       | 783         | 21       | 761         | 20       | 760         | 20       | 739         | 21       |
| Maui .....               | 402         | 20       | 400         | 19       | 386         | 19       | 397         | 17       | 472         | 16       |
| Windward .....           | 201         | 21       | 202         | 21       | 199         | 21       | 202         | 20       | 206         | 22       |

1/ Excludes 093 (Cooperative Education), 099 (Individual Instruction), 486 (Senior Project, WO), 490 (Practicum, WO), 700 (Thesis Research), and 800 (Dissertation Research) courses.

2/ Beginning Spring 2000, data for the Manoa and Hilo campuses includes continuing education classes.