

COURSE REGISTRATION REPORT
UNIVERSITY OF HAWAI'I
SPRING 2003

Institutional Research Office
University of Hawai'i
July 2004

File Reference: Management and Planning Support Folder, Courses

Reports available online at: <http://www.hawaii.edu/iro/maps.htm>

University of Hawai'i System, Spring Semesters 1999 - 2003

Figure 1: Total Student Semester Hours (SSH)

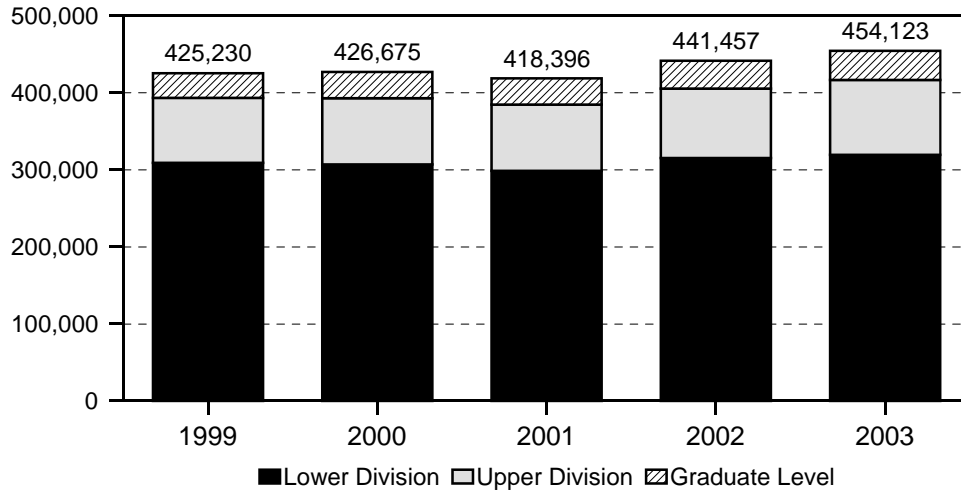


Figure 2: Average Class Size

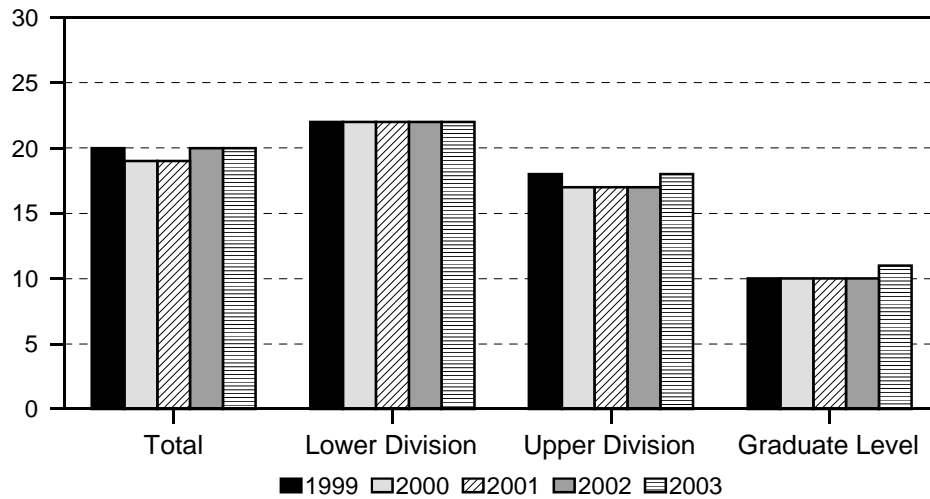


Figure 3: Average Class Size, by Unit

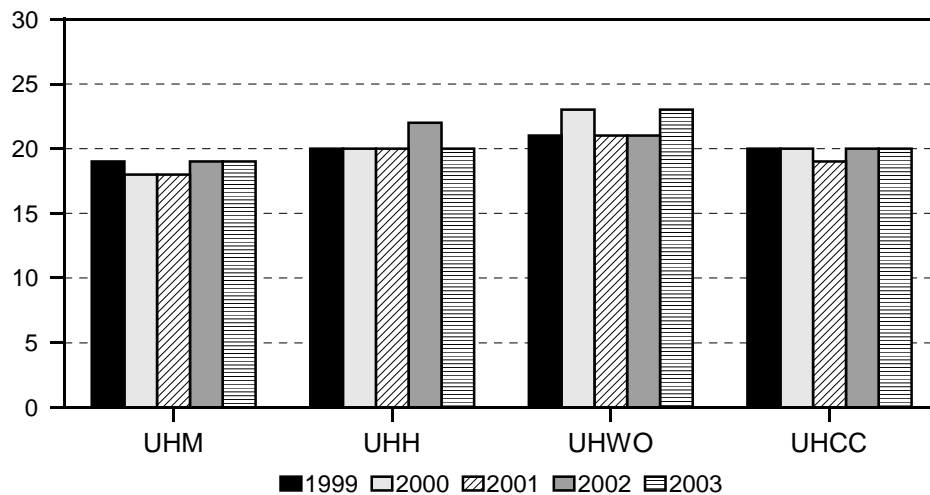


TABLE 1
 COURSE REGISTRATION SUMMARY, BY CAMPUS
 UNIVERSITY OF HAWAII
 SPRING 2003

CAMPUS AND COURSE LEVEL	COURSES	CLASSES 1/ No. Avg Size	SEM HOURS	STUDENT REGIS	STUDENT SEM HRS	COURSE FTE
TOTAL	5,043	7,744 20	22,034	156,000	454,123	30,901
Lower Division	2,646	4,953 22	14,403	110,202	319,168	21,270
Upper Division	1,442	1,801 18	5,136	33,436	97,270	6,485
Graduate Level	955	990 11	2,495	12,362	37,685	3,146
UH AT MANOA	2,438	3,500 19	9,345	70,932	202,979	14,159
Lower Division	427	1,080 30	2,774	32,306	89,119	5,940
Upper Division	1,065	1,438 18	4,091	26,324	76,298	5,083
Graduate Level	946	982 11	2,480	12,302	37,562	3,136
UH AT HILO	505	605 20	1,649	12,421	35,260	2,355
Lower Division	211	330 23	891	7,600	21,187	1,413
Upper Division	285	267 17	743	4,761	13,950	932
Graduate Level	9	8 7	15	60	123	10
UH - WEST O'AHU	92	96 23	302	2,351	7,022	470
UH COMMUNITY COLLEGES...	2,008	3,543 20	10,738	70,296	208,862	13,917
Hawai'i	279	399 17	1,168	6,733	19,664	1,312
Honolulu	355	564 21	1,867	12,207	36,354	2,421
Kapi'olani	425	949 20	2,921	19,307	58,491	3,898
Kaua'i	177	211 14	616	3,031	8,642	575
Leeward	329	787 20	2,369	16,174	48,606	3,237
Maui	299	428 18	1,194	7,950	22,681	1,514
Windward	144	205 24	603	4,894	14,424	960

1/ Excludes 093 (Cooperative Education), 099 (Individual Instruction), 486 (Senior Project, WO), 490 (Practicum, WO), 700 (Thesis Research), and 800 (Dissertation Research) courses. Beginning Spring 2003, also excludes Aerospace Studies and Military Science classes.

TABLE 2
STUDENT SEMESTER HOURS (SSH) AND COURSE FTE
UNIVERSITY OF HAWAII
SPRING 1999 TO SPRING 2003

COLLEGE AND LEVEL	SPRING 1999 1/			SPRING 2000 2/			SPRING 2001			SPRING 2002			SPRING 2003		
	SSH No.	%C	COURSE FTE	SSH No.	%C	COURSE FTE	SSH No.	%C	COURSE FTE	SSH No.	%C	COURSE FTE	SSH No.	%C	COURSE FTE
TOTAL	425,230	-1.5	28,874	426,675	NA	29,002	418,396	-1.9	28,465	441,457	5.5	30,032	454,123	2.9	30,901
Lower Division	309,104	-2.0	20,603	306,894		20,449	298,764	-2.6	19,918	314,974	5.4	20,996	319,168	1.3	21,270
Upper Division	84,259	-0.7	5,619	85,903		5,728	85,757	-0.2	5,719	90,395	5.4	6,021	97,270	7.6	6,485
Graduate Level	31,867	1.2	2,652	33,878		2,825	33,875	< 0.1	2,828	36,088	6.5	3,015	37,685	4.4	3,146
UH AT MANOA	179,219	-3.3	12,469	182,497	NA	12,727	179,829	-1.5	12,557	190,634	6.0	13,300	202,979	6.5	14,159
Lower Division	81,435	-5.4	5,428	81,202		5,410	79,418	-2.2	5,293	84,809	6.8	5,647	89,119	5.1	5,940
Upper Division	66,321	-2.1	4,423	67,492		4,499	66,621	-1.3	4,443	69,933	5.0	4,655	76,298	9.1	5,083
Graduate Level	31,463	-0.1	2,618	33,803		2,818	33,790	< 0.1	2,821	35,892	6.2	2,998	37,562	4.7	3,136
UH AT HILO	30,992	3.4	2,073	31,819	NA	2,125	32,239	1.3	2,152	34,289	6.4	2,292	35,260	2.8	2,355
Lower Division	18,939	1.2	1,263	19,563		1,306	19,638	0.4	1,310	20,450	4.1	1,365	21,187	3.6	1,413
Upper Division	11,649	3.5	776	12,181		812	12,516	2.8	835	13,643	9.0	910	13,950	2.3	932
Graduate Level 3/	404	13,366.7	34	75		7	85	13.3	7	196	130.6	17	123	-37.2	10
UH - WEST O'AHU	6,289	7.2	420	6,230	-0.9	417	6,620	6.3	441	6,819	3.0	456	7,022	3.0	470
UH COMMUNITY COLLEGES...	208,730	-0.9	13,912	206,129	-1.2	13,733	199,708	-3.1	13,315	209,715	5.0	13,984	208,862	-0.4	13,917
Hawai'i	21,665	-0.5	1,442	20,184	-6.8	1,343	19,162	-5.1	1,277	19,322	0.8	1,288	19,664	1.8	1,312
Honolulu	35,024	NA	2,335	37,848	8.1	2,520	36,674	-3.1	2,444	37,566	2.4	2,504	36,354	-3.2	2,421
Kapi'olani	59,677	1.3	3,984	59,602	-0.1	3,974	57,245	-4.0	3,815	61,543	7.5	4,101	58,491	-5.0	3,898
Kaua'i	9,594	-10.5	638	8,730	-9.0	585	8,131	-6.9	544	8,879	9.2	594	8,642	-2.7	575
Leeward	49,089	-1.3	3,270	46,322	-5.6	3,087	45,942	-0.8	3,064	47,202	2.7	3,144	48,606	3.0	3,237
Maui	21,412	-3.0	1,427	21,318	-0.4	1,418	20,424	-4.2	1,359	21,628	5.9	1,445	22,681	4.9	1,514
Windward	12,269	0.7	816	12,125	-1.2	806	12,130	< 0.1	812	13,575	11.9	908	14,424	6.3	960

1/ Beginning Spring 1999, data for Honolulu Community College includes off-campus credit classes. Percentage changes for Spring 1999 are not comparable with prior year.

2/ Beginning Spring 2000, data for Manoa and Hilo campuses includes continuing education classes. Percentage changes for Spring 2000 are not comparable with prior year.

3/ In Spring 1999, Teacher Education and Curriculum Studies was added which significantly increased Student Semester Hours (SSH) at the graduate level.

TABLE 3
NUMBER OF CLASSES AND AVERAGE CLASS SIZE 1/
UNIVERSITY OF HAWAI'I
SPRING 1999 TO SPRING 2003

COLLEGE AND LEVEL	SPRING 1999		SPRING 2000		SPRING 2001		SPRING 2002		SPRING 2003	
	No.	Avg Size	No.	Avg Size	No.	Avg Size	No.	Avg Size	No.	Avg Size
TOTAL	7,222	20	7,358	19	7,382	19	7,554	20	7,744	20
Lower Division	4,728	22	4,727	22	4,718	22	4,844	22	4,953	22
Upper Division	1,589	18	1,673	17	1,708	17	1,713	17	1,801	18
Graduate Level	905	10	958	10	956	10	997	10	990	11
UH AT MANOA 2/	3,182	19	3,344	18	3,325	18	3,417	19	3,500	19
Lower Division	1,033	28	1,042	28	1,022	28	1,065	29	1,080	30
Upper Division	1,253	18	1,349	17	1,351	16	1,363	17	1,438	18
Graduate Level	896	10	953	10	952	10	989	10	982	11
UH AT HILO 2/	542	20	537	20	567	20	554	22	605	20
Lower Division	292	24	294	24	302	23	299	25	330	23
Upper Division	241	16	238	17	261	16	247	18	267	17
Graduate Level	9	23	5	6	4	11	8	14	8	7
UH - WEST O'AHU	95	21	86	23	96	21	103	21	96	23
UH COMMUNITY COLLEGES....	3,403	20	3,391	20	3,394	19	3,480	20	3,543	20
Hawai'i	391	18	386	17	398	16	375	17	399	17
Honolulu 3/	521	22	571	22	557	21	566	21	564	21
Kapi'olani	907	22	897	22	892	21	924	22	949	20
Kaua'i	206	15	201	15	198	14	205	15	211	14
Leeward	779	21	754	20	752	20	732	21	787	20
Maui	400	19	386	19	397	17	472	16	428	18
Windward	199	21	196	21	200	20	206	22	205	24

1/ Excludes 093 (Cooperative Education), 099 (Individual Instruction), 486 (Senior Project, WO), 490 (Practicum, WO), 700 (Thesis Research), and 800 (Dissertation Research) courses. Beginning Spring 2003, excludes Aerospace Studies and Military Science classes. Data have been adjusted for prior years.

2/ Beginning Spring 2000, data for the Manoa and Hilo campuses includes continuing education classes.

3/ Beginning Spring 1999, data for Honolulu Community College includes off-campus credit classes.