

COURSE REGISTRATION REPORT

UNIVERSITY OF HAWAI'I

SPRING 2006

Institutional Research Office

University of Hawai'i

September 2008

File Reference: Management and Planning Support Folder, Courses

Reports available online at: <http://www.hawaii.edu/iro/maps.htm>

COURSE REGISTRATION REPORT
UNIVERSITY OF HAWAII

University of Hawai'i - Spring Semesters

Figure 1 Total Student Semester Hours (SSH)

Figure 2 Average Class Size

Figure 3 Average Class Size, by Unit

Table 1 Course Registration Summary, By Campus

Table 2 Student Semester Hours (SSH) and Course FTE

Table 3 Number of Classes and Average Class Size

University of Hawai'i System, Spring Semesters

Figure 1: Total Student Semester Hours (SSH)

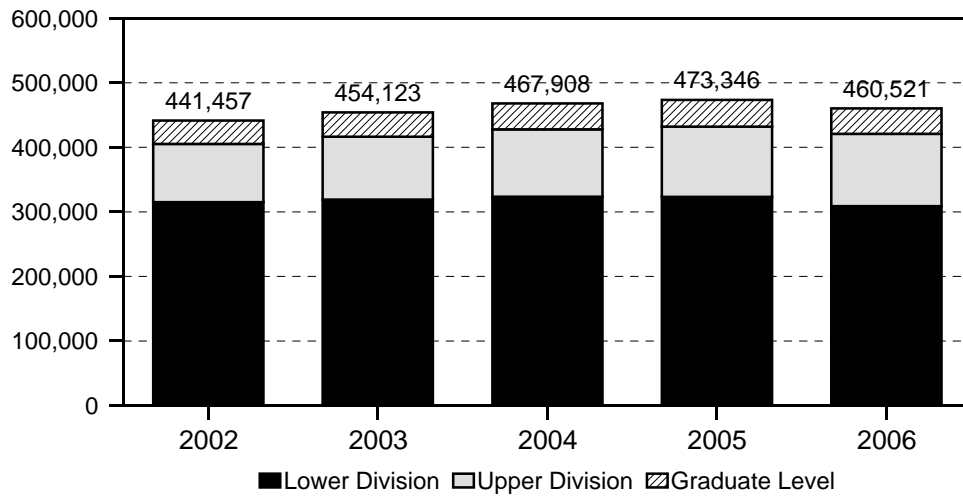


Figure 2: Average Class Size

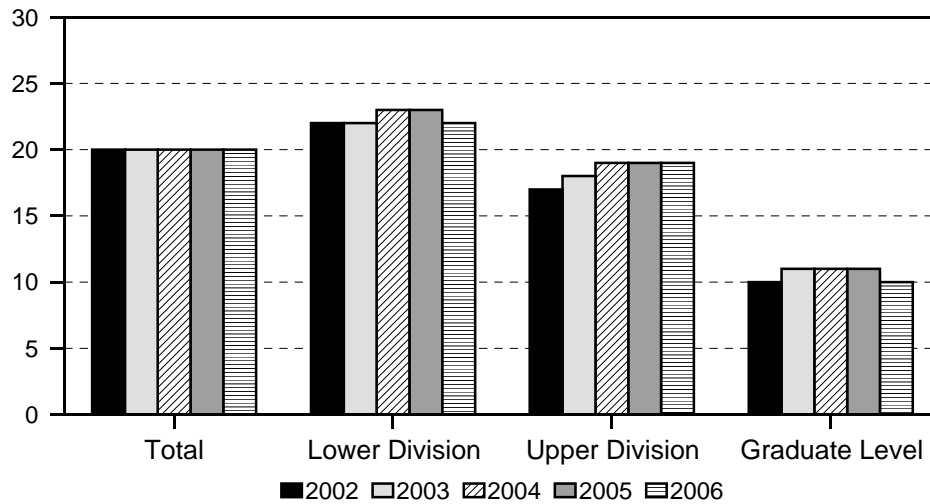


Figure 3: Average Class Size, by Unit

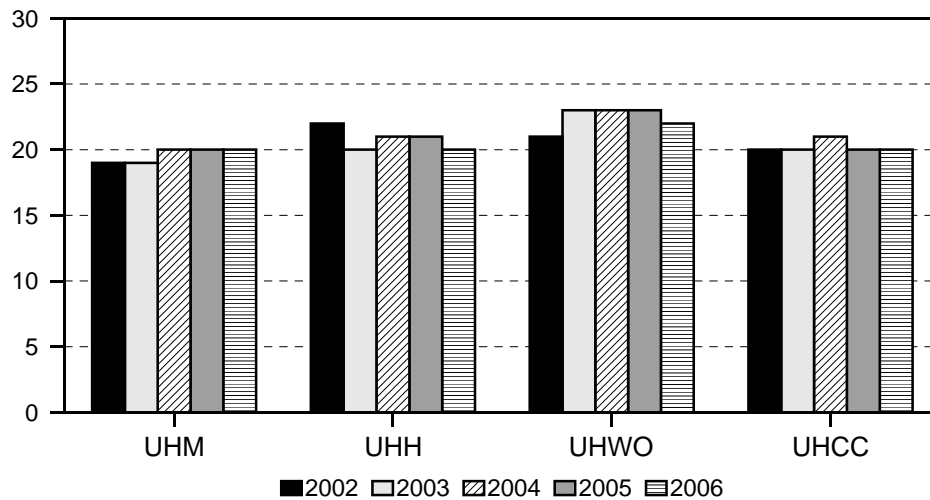


Table 1
Course Registration Summary, By Campus
 University of Hawai'i
 Spring 2006

CAMPUS AND LEVEL	COURSES	CLASSES		SEMESTER HOURS	STUDENT REGIS	STUDENT SEM HRS	COURSE FTE
		No.	Avg Size				
UH TOTAL	5,229	7,784	20	22,042.5	157,902	460,521	31,373
Lower Division	2,599	4,777	22	13,763.5	106,988	308,745	20,587
Upper Division	1,573	1,928	19	5,590	38,065	112,124	7,473
Graduate Level	1,057	1,079	10	2,689	12,849	39,652	3,313
UH MANOA	2,663	3,709	20	9,872	75,635	217,280	15,147
Lower Division	466	1,132	29	2,863	32,782	89,511	5,970
Upper Division	1,167	1,520	19	4,378	30,217	88,691	5,911
Graduate Level	1,030	1,057	10	2,631	12,636	39,078	3,266
UH HILO	546	693	20	1,970	14,232	40,638	2,715
Lower Division	215	371	23	1,035	8,505	23,667	1,576
Upper Division	304	300	18	877	5,514	16,397	1,092
Graduate Level	27	22	8	58	213	574	47
UH WEST O'AHU	92	98	22	303	2,251	6,773	452
Upper Division	92	98	22	303	2,251	6,773	452
UH COMMUNITY COLLEGES	1,928	3,284	20	9,897.5	65,784	195,830	13,059
Lower Division	1,918	3,274	20	9,865.5	65,701	195,567	13,041
Upper Division	10	10	8	32	83	263	18
Hawai'i	273	381	17	1,147	6,610	19,237	1,287
Lower Division	273	381	17	1,147	6,610	19,237	1,287
Honolulu	341	529	19	1,637.5	10,642	31,685	2,115
Lower Division	340	529	19	1,637.5	10,640	31,677	2,114
Upper Division	1				2	8	1
Kapi'olani	429	913	20	2,789	18,758	57,244	3,815
Lower Division	427	910	20	2,778	18,734	57,160	3,809
Upper Division	2	3	8	11	24	84	6
Kaua'i	168	190	15	543	2,872	7,865	524
Lower Division	168	190	15	543	2,872	7,865	524
Leeward	295	697	21	2,114	14,857	44,765	2,987
Lower Division	295	697	21	2,114	14,857	44,765	2,987
Maui	280	366	20	1,073	7,409	21,555	1,433
Lower Division	273	359	20	1,052	7,352	21,384	1,422
Upper Division	7	7	8	21	57	171	11
Windward	142	208	22	594	4,636	13,479	898
Lower Division	142	208	22	594	4,636	13,479	898

1/ Number of classes and average class size exclude courses numbered -93 (Cooperative Education), -99 (Individual Instruction or Directed Studies), 700 (Thesis Research), and 800 (Dissertation Research), Aerospace Studies and Military Science classes. For UH West O'ahu, senior projects and practicums are also excluded.

SERIES: Course Registration Report
 SOURCE: Banner Operational Data Store (ODS), IRO_SOCAD, IRO_SOCEX

University of Hawai'i, Institutional Research Office

Table 2
Student Semester Hours (SSH) and Course FTE
 University of Hawai'i
 Spring 2005 to Spring 2006

College and Level	Spring 2005			Spring 2006		
	SSH		COURSE	SSH		COURSE
	No.	%Chg	FTE	No.	%Chg	FTE
UH TOTAL	473,346		32,242	460,521	-3	31,373
Lower Division	323,320		21,553	308,745	-5	20,587
Upper Division	108,743		7,249	112,124	3	7,473
Graduate Level	41,283		3,440	39,652	-4	3,313
UH MANOA	220,471		15,379	217,280	-1	15,147
Lower Division	93,508		6,234	89,511	-4	5,970
Upper Division	86,024		5,735	88,691	3	5,911
Graduate Level	40,939		3,410	39,078	-5	3,266
UH HILO	39,760		2,655	40,638	2	2,715
Lower Division	23,827		1,587	23,667	-1	1,576
Upper Division	15,589		1,038	16,397	5	1,092
Graduate Level	344		30	574	67	47
UH WEST O'AHU	7,005		468	6,773	-3	452
Upper Division	7,005		468	6,773	-3	452
UH COMMUNITY COLLEGES	206,110		13,740	195,830	-5	13,059
Lower Division	205,985		13,732	195,567	-5	13,041
Upper Division	125		8	263	110	18
Hawai'i	21,089		1,405	19,237	-9	1,287
Lower Division	21,089		1,405	19,237	-9	1,287
Honolulu	34,046		2,271	31,685	-7	2,115
Lower Division	34,014		2,269	31,677	-7	2,114
Upper Division	32		2	8	-75	1
Kapi'olani	58,840		3,916	57,244	-3	3,815
Lower Division	58,840		3,916	57,160	-3	3,809
Upper Division				84		6
Kaua'i	8,352		557	7,865	-6	524
Lower Division	8,352		557	7,865	-6	524
Leeward	46,344		3,091	44,765	-3	2,987
Lower Division	46,344		3,091	44,765	-3	2,987
Maui	23,387		1,560	21,555	-8	1,433
Lower Division	23,294		1,554	21,384	-8	1,422
Upper Division	93		6	171	84	11
Windward	14,052		940	13,479	-4	898
Lower Division	14,052		940	13,479	-4	898

1/ Percent change between -.49 and 0 is noted as (<1). Percent change between -.9 and -.5 is rounded to -1.

SERIES: Course Registration Report
 SOURCE: Banner Operational Data Store (ODS), IRO_SOCAD

University of Hawai'i, Institutional Research Office

Table 3
Number of Classes and Average Class Size
University of Hawai'i
Spring 2005 to Spring 2006

College and Level	Spring 2005			Spring 2006		
	CLASSES		AVG	CLASSES		AVG
	No.	%Chg	SIZE	No.	%Chg	SIZE
UH TOTAL	7,897		20	7,784	-1	20
Lower Division	4,901		23	4,777	-3	22
Upper Division	1,935		19	1,928	(<1)	19
Graduate Level	1,061		11	1,079	2	10
UH MANOA	3,760		20	3,709	-1	20
Lower Division	1,158		30	1,132	-2	29
Upper Division	1,554		19	1,520	-2	19
Graduate Level	1,048		11	1,057	1	10
UH HILO	672		21	693	3	20
Lower Division	378		23	371	-2	23
Upper Division	281		18	300	7	18
Graduate Level	13		9	22	69	8
UH WEST O'AHU	95		23	98	3	22
Upper Division	95		23	98	3	22
UH COMMUNITY COLLEGES	3,370		20	3,284	-3	20
Lower Division	3,365		20	3,274	-3	20
Upper Division	5		8	10	100	8
Hawai'i	414		18	381	-8	17
Lower Division	414		18	381	-8	17
Honolulu	553		20	529	-4	19
Lower Division	552		20	529	-4	19
Upper Division	1		8			
Kapi'olani	949		20	913	-4	20
Lower Division	949		20	910	-4	20
Upper Division				3		8
Kaua'i	193		15	190	-2	15
Lower Division	193		15	190	-2	15
Leeward	689		22	697	1	21
Lower Division	689		22	697	1	21
Maui	373		22	366	-2	20
Lower Division	369		22	359	-3	20
Upper Division	4		8	7	75	8
Windward	199		24	208	5	22
Lower Division	199		24	208	5	22

1/ Excludes courses numbered -93 (Cooperative Education), -99 (Individual Instruction or Directed Studies), 700 (Thesis Research), and 800 (Dissertation Research), Aerospace Studies and Military Science classes. For UH West O'ahu, senior projects and practicums are also excluded.
2/ Percent change between -.49 and 0 is noted as (<1). Percent change between -.9 and -.5 is rounded to -1.

SERIES: Course Registration Report
SOURCE: Banner Operational Data Store (ODS), IRO_SOCAD

University of Hawai'i, Institutional Research Office