

COURSE REGISTRATION REPORT

UNIVERSITY OF HAWAI'I

SPRING 2007

Institutional Research Office

University of Hawai'i

September 2008

File Reference: Management and Planning Support Folder, Courses

Reports available online at: <http://www.hawaii.edu/iro/maps.htm>

COURSE REGISTRATION REPORT
UNIVERSITY OF HAWAII

University of Hawai'i - Spring Semesters

Figure 1 Total Student Semester Hours (SSH)

Figure 2 Average Class Size

Figure 3 Average Class Size, by Unit

Table 1 Course Registration Summary, By Campus

Table 2 Student Semester Hours (SSH) and Course FTE

Table 3 Number of Classes and Average Class Size

University of Hawai'i System, Spring Semesters

Figure 1: Total Student Semester Hours (SSH)

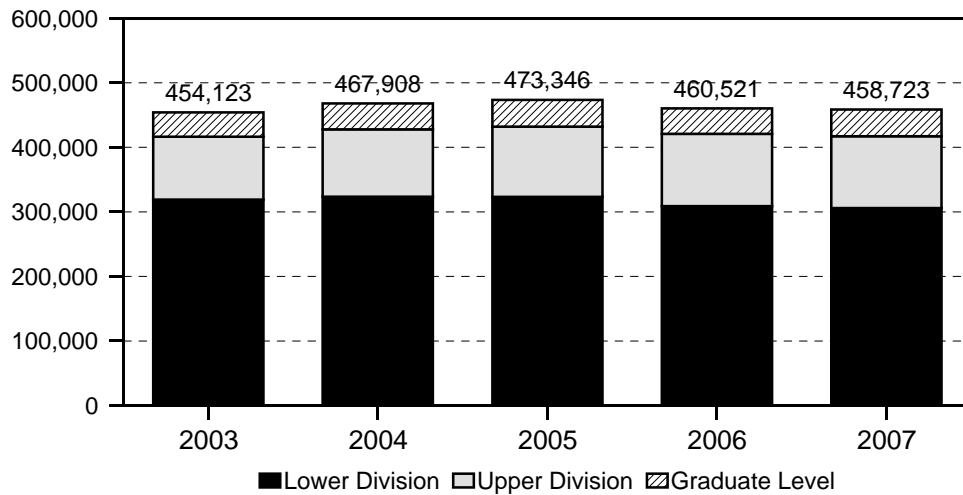


Figure 2: Average Class Size

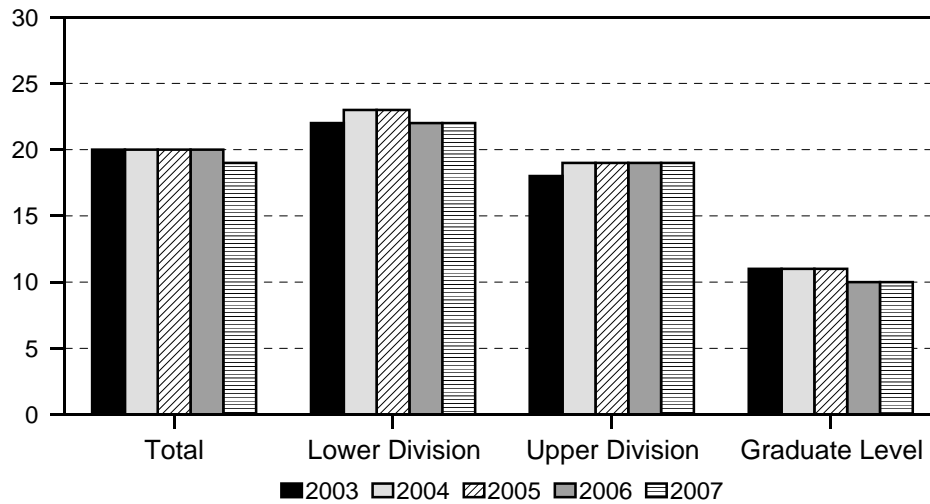


Figure 3: Average Class Size, by Unit

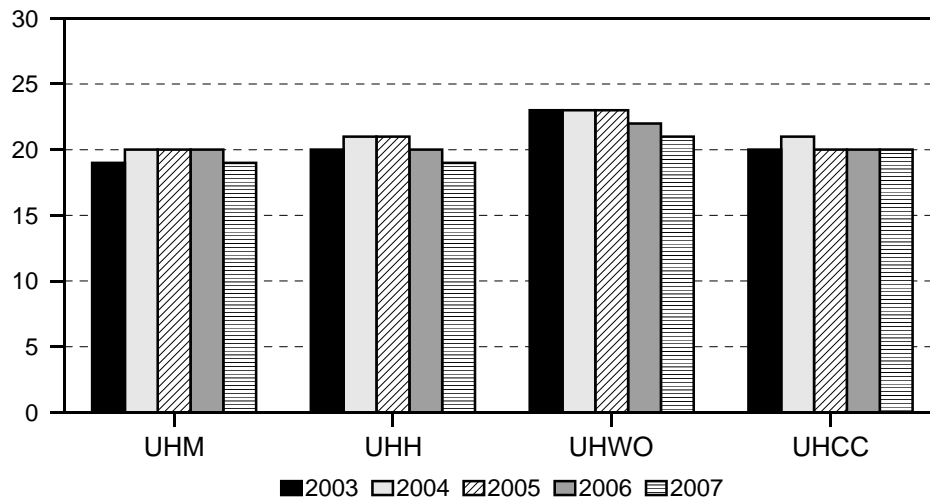


Table 1
Course Registration Summary, By Campus
 University of Hawai'i
 Spring 2007

CAMPUS AND LEVEL	COURSES	CLASSES		SEMESTER HOURS	STUDENT REGIS	STUDENT SEM HRS	COURSE FTE
		No.	Avg Size				
UH TOTAL	5,258	7,887	19	22,298.5	157,201	458,723	31,267
Lower Division	2,596	4,804	22	13,784.5	106,042	306,028	20,397
Upper Division	1,583	1,960	19	5,671	37,911	111,269	7,419
Graduate Level	1,079	1,123	10	2,843	13,248	41,426	3,451
UH MANOA	2,661	3,734	19	9,998	74,818	214,867	15,000
Lower Division	449	1,098	29	2,790	31,701	86,116	5,741
Upper Division	1,164	1,540	19	4,430	30,099	87,993	5,865
Graduate Level	1,048	1,096	10	2,778	13,018	40,758	3,394
UH HILO	555	725	19	2,020	14,156	40,656	2,721
Lower Division	214	395	22	1,076	8,520	23,923	1,592
Upper Division	310	303	17	879	5,406	16,065	1,072
Graduate Level	31	27	7	65	230	668	57
UH WEST O'AHU	92	99	21	302	2,231	6,645	445
Upper Division	92	99	21	302	2,231	6,645	445
UH COMMUNITY COLLEGES	1,950	3,329	20	9,978.5	65,996	196,555	13,101
Lower Division	1,933	3,311	20	9,918.5	65,821	195,989	13,064
Upper Division	17	18	10	60	175	566	37
Hawai'i	274	382	17	1,165	6,550	19,393	1,291
Lower Division	274	382	17	1,165	6,550	19,393	1,291
Honolulu	343	530	19	1,623	10,633	31,881	2,125
Lower Division	337	524	19	1,604	10,569	31,677	2,112
Upper Division	6	6	11	19	64	204	13
Kapi'olani	441	932	20	2,792.5	19,177	57,980	3,870
Lower Division	439	929	21	2,781.5	19,143	57,861	3,862
Upper Division	2	3	11	11	34	119	8
Kaua'i	169	196	14	551	2,853	7,873	525
Lower Division	169	196	14	551	2,853	7,873	525
Leeward	310	703	21	2,142	15,107	45,524	3,032
Lower Division	310	703	21	2,142	15,107	45,524	3,032
Maui	273	382	18	1,126	7,193	20,907	1,394
Lower Division	264	373	19	1,096	7,116	20,664	1,378
Upper Division	9	9	9	30	77	243	16
Windward	140	204	22	579	4,483	12,997	864
Lower Division	140	204	22	579	4,483	12,997	864

1/ Number of classes and average class size exclude courses numbered -93 (Cooperative Education), -99 (Individual Instruction or Directed Studies), 700 (Thesis Research), and 800 (Dissertation Research), Aerospace Studies and Military Science classes. For UH West O'ahu, senior projects and practicums are also excluded.

SERIES: Course Registration Report
 SOURCE: Banner Operational Data Store (ODS), IRO_SOCAD, IRO_SOCEX

University of Hawai'i, Institutional Research Office

Table 2
Student Semester Hours (SSH) and Course FTE
University of Hawai'i
Spring 2005 to Spring 2007

College and Level	Spring 2005			Spring 2006			Spring 2007		
	SSH		COURSE	SSH		COURSE	SSH		COURSE
	No.	%Chg	FTE	No.	%Chg	FTE	No.	%Chg	FTE
UH TOTAL	473,346		32,242	460,521	-3	31,373	458,723	(<1)	31,267
Lower Division	323,320		21,553	308,745	-5	20,587	306,028	-1	20,397
Upper Division	108,743		7,249	112,124	3	7,473	111,269	-1	7,419
Graduate Level	41,283		3,440	39,652	-4	3,313	41,426	4	3,451
UH MANOA	220,471		15,379	217,280	-1	15,147	214,867	-1	15,000
Lower Division	93,508		6,234	89,511	-4	5,970	86,116	-4	5,741
Upper Division	86,024		5,735	88,691	3	5,911	87,993	-1	5,865
Graduate Level	40,939		3,410	39,078	-5	3,266	40,758	4	3,394
UH HILO	39,760		2,655	40,638	2	2,715	40,656	<1	2,721
Lower Division	23,827		1,587	23,667	-1	1,576	23,923	1	1,592
Upper Division	15,589		1,038	16,397	5	1,092	16,065	-2	1,072
Graduate Level	344		30	574	67	47	668	16	57
UH WEST O'AHU	7,005		468	6,773	-3	452	6,645	-2	445
Upper Division	7,005		468	6,773	-3	452	6,645	-2	445
UH COMMUNITY COLLEGES	206,110		13,740	195,830	-5	13,059	196,555	<1	13,101
Lower Division	205,985		13,732	195,567	-5	13,041	195,989	<1	13,064
Upper Division	125		8	263	110	18	566	115	37
Hawai'i	21,089		1,405	19,237	-9	1,287	19,393	1	1,291
Lower Division	21,089		1,405	19,237	-9	1,287	19,393	1	1,291
Honolulu	34,046		2,271	31,685	-7	2,115	31,881	1	2,125
Lower Division	34,014		2,269	31,677	-7	2,114	31,677	0	2,112
Upper Division	32		2	8	-75	1	204	2450	13
Kapi'olani	58,840		3,916	57,244	-3	3,815	57,980	1	3,870
Lower Division	58,840		3,916	57,160	-3	3,809	57,861	1	3,862
Upper Division				84		6	119	42	8
Kaua'i	8,352		557	7,865	-6	524	7,873	<1	525
Lower Division	8,352		557	7,865	-6	524	7,873	<1	525
Leeward	46,344		3,091	44,765	-3	2,987	45,524	2	3,032
Lower Division	46,344		3,091	44,765	-3	2,987	45,524	2	3,032
Maui	23,387		1,560	21,555	-8	1,433	20,907	-3	1,394
Lower Division	23,294		1,554	21,384	-8	1,422	20,664	-3	1,378
Upper Division	93		6	171	84	11	243	42	16
Windward	14,052		940	13,479	-4	898	12,997	-4	864
Lower Division	14,052		940	13,479	-4	898	12,997	-4	864

1/ Percent change between -.49 and 0 is noted as (<1). Percent change between -.9 and -.5 is rounded to -1.

SERIES: Course Registration Report
SOURCE: Banner Operational Data Store (ODS), IRO_SOCAD

University of Hawai'i, Institutional Research Office

Table 3
Number of Classes and Average Class Size
University of Hawai'i
Spring 2005 to Spring 2007

College and Level	Spring 2005			Spring 2006			Spring 2007		
	CLASSES		AVG	CLASSES		AVG	CLASSES		AVG
	No.	%Chg	SIZE	No.	%Chg	SIZE	No.	%Chg	SIZE
UH TOTAL	7,897		20	7,784	-1	20	7,887	1	19
Lower Division	4,901		23	4,777	-3	22	4,804	1	22
Upper Division	1,935		19	1,928	(<1)	19	1,960	2	19
Graduate Level	1,061		11	1,079	2	10	1,123	4	10
UH MANOA	3,760		20	3,709	-1	20	3,734	1	19
Lower Division	1,158		30	1,132	-2	29	1,098	-3	29
Upper Division	1,554		19	1,520	-2	19	1,540	1	19
Graduate Level	1,048		11	1,057	1	10	1,096	4	10
UH HILO	672		21	693	3	20	725	5	19
Lower Division	378		23	371	-2	23	395	6	22
Upper Division	281		18	300	7	18	303	1	17
Graduate Level	13		9	22	69	8	27	23	7
UH WEST O'AHU	95		23	98	3	22	99	1	21
Upper Division	95		23	98	3	22	99	1	21
UH COMMUNITY COLLEGES	3,370		20	3,284	-3	20	3,329	1	20
Lower Division	3,365		20	3,274	-3	20	3,311	1	20
Upper Division	5		8	10	100	8	18	80	10
Hawai'i	414		18	381	-8	17	382	<1	17
Lower Division	414		18	381	-8	17	382	<1	17
Honolulu	553		20	529	-4	19	530	<1	19
Lower Division	552		20	529	-4	19	524	-1	19
Upper Division	1		8				6		11
Kapi'olani	949		20	913	-4	20	932	2	20
Lower Division	949		20	910	-4	20	929	2	21
Upper Division				3		8	3	0	11
Kaua'i	193		15	190	-2	15	196	3	14
Lower Division	193		15	190	-2	15	196	3	14
Leeward	689		22	697	1	21	703	1	21
Lower Division	689		22	697	1	21	703	1	21
Maui	373		22	366	-2	20	382	4	18
Lower Division	369		22	359	-3	20	373	4	19
Upper Division	4		8	7	75	8	9	29	9
Windward	199		24	208	5	22	204	-2	22
Lower Division	199		24	208	5	22	204	-2	22

1/ Excludes courses numbered -93 (Cooperative Education), -99 (Individual Instruction or Directed Studies), 700 (Thesis Research), and 800 (Dissertation Research), Aerospace Studies and Military Science classes. For UH West O'ahu, senior projects and practicums are also excluded.
2/ Percent change between -.49 and 0 is noted as (<1). Percent change between -.9 and -.5 is rounded to -1.

SERIES: Course Registration Report
SOURCE: Banner Operational Data Store (ODS), IRO_SOCAD

University of Hawai'i, Institutional Research Office