

COURSE REGISTRATION REPORT
UNIVERSITY OF HAWAI'I
SPRING 2009

Institutional Research Office
University of Hawai'i
May 2009

File Reference: Management and Planning Support Folder, Courses

Reports available online at: <http://www.hawaii.edu/iro/>

COURSE REGISTRATION REPORT
UNIVERSITY OF HAWAI'I

University of Hawai'i - Spring Semesters

Figure 1 Total Student Semester Hours (SSH)

Figure 2 Average Class Size

Figure 3 Average Class Size, by Unit

Table 1 Course Registration Summary, By Campus

Table 2 Student Semester Hours (SSH) and Course FTE

Table 3 Number of Classes and Average Class Size

University of Hawai'i System, Spring Semesters

Figure 1: Total Student Semester Hours (SSH)

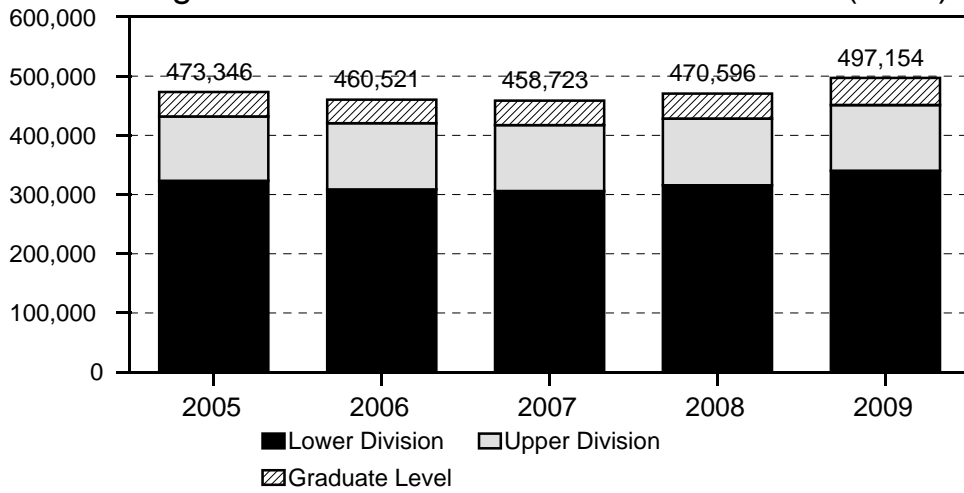


Figure 2: Average Class Size

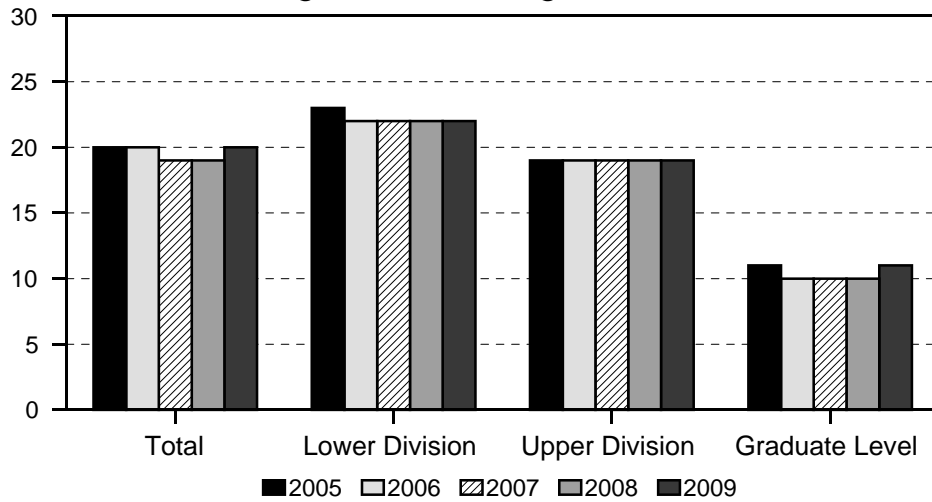


Figure 3: Average Class Size, by Unit

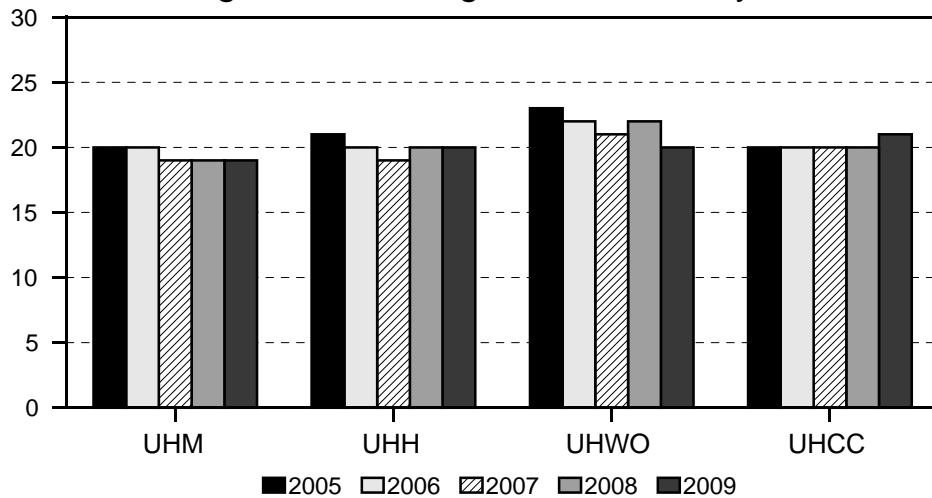


TABLE 1
Course Registration Summary, By Campus
 University of Hawai'i
 Spring 2009

CAMPUS AND COURSE LEVEL	COURSES	CLASSES		SEMESTER HOURS	STUDENT REGIS	STUDENT SEM HRS	COURSE FTE
		No.	Avg Size				
UH TOTAL	5,387	8,380	20	23,703.5	170,821	497,154	33,912
Lower Division	2,704	5,205	22	15,002.5	117,880	340,240.5	22,676
Upper Division	1,593	1,959	19	5,662	37,854	111,024	7,399
Graduate Level	1,090	1,216	11	3,039	15,087	45,889.5	3,837
UH MANOA	2,625	3,718	19	9,941	73,812	212,952.5	14,901
Lower Division	432	1,045	29	2,710	30,905	85,220	5,677
Upper Division	1,156	1,505	19	4,328	29,332	85,817	5,720
Graduate Level	1,037	1,168	10	2,903	13,575	41,915.5	3,504
UH HILO	594	791	20	2,210	16,276	46,075	3,139
Lower Division	230	423	21	1,146	9,103	25,467	1,698
Upper Division	311	320	17	928	5,661	16,634	1,108
Graduate Level	53	48	30	136	1,512	3,974	333
UH WEST O'AHU	136	149	20	440	3,212	9,433	628
Lower Division	28	33	17	97	556	1,547	102
Upper Division	108	116	21	343	2,656	7,886	526
UH COMMUNITY COLLEGES	2,032	3,722	21	11,112.5	77,521	228,693.5	15,244
Lower Division	2,014	3,704	21	11,049.5	77,316	228,006.5	15,199
Upper Division	18	18	11	63	205	687	45
Hawai'i	304	461	19	1,379	8,736	25,444	1,698
Lower Division	304	461	19	1,379	8,736	25,444	1,698
Honolulu	339	541	19	1,675.5	10,940	32,464.5	2,164
Lower Division	333	536	20	1,657.5	10,879	32,246.5	2,150
Upper Division	6	5	11	18	61	218	14
Kapi'olani	423	1,005	21	2,993	21,540	64,390	4,288
Lower Division	420	1,001	21	2,978	21,498	64,236	4,278
Upper Division	3	4	11	15	42	154	10
Kaua'i	186	221	15	631	3,434	9,519	635
Lower Division	186	221	15	631	3,434	9,519	635
Leeward	322	836	21	2,526	17,893	53,571	3,572
Lower Division	322	836	21	2,526	17,893	53,571	3,572
Maui	306	443	22	1,307	9,767	28,311	1,886
Lower Division	297	434	22	1,277	9,665	27,996	1,865
Upper Division	9	9	11	30	102	315	21
Windward	152	215	24	601	5,211	14,994	1,001
Lower Division	152	215	24	601	5,211	14,994	1,001

1/ Number of classes and average class size exclude courses numbered -93 (Cooperative Education), -99 (Individual Instruction or Directed Studies), 700 (Thesis Research), and 800 (Dissertation Research), Aerospace Studies and Military Science classes. For UH West O'ahu, senior projects and practicums are also excluded.

2/ General Education and Lower Division Curriculum of the UH West Oahu approved by Board of Regents in November 2006.

SERIES: Course Registration Report

SOURCE: Banner Operational Data Store (ODS), IRO_SOCAD, IRO_SOCEX

University of Hawai'i, Institutional Research Office

TABLE 2
Student Semester Hours (SSH) and Course FTE
 University of Hawai'i
 Spring 2005 to Spring 2009

College and Level	Spring 2005			Spring 2006			Spring 2007			Spring 2008			Spring 2009		
	SSH		COURSE	SSH		COURSE	SSH		COURSE	SSH		COURSE	SSH		COURSE
	No.	%C	FTE	No.	%C	FTE	No.	%C	FTE	No.	%C	FTE	No.	%C	FTE
UH TOTAL	473,346		32,242	460,521	-3	31,373	458,723	(<1)	31,267	470,596	3	32,093	497,154	6	33,912
Lower Division	323,320		21,553	308,745	-5	20,587	306,028	-1	20,397	315,844.5	3	21,062	340,240.5	8	22,676
Upper Division	108,743		7,249	112,124	3	7,473	111,269	-1	7,419	112,543	1	7,507	111,024	-1	7,399
Graduate Level	41,283		3,440	39,652	-4	3,313	41,426	4	3,451	42,208.5	2	3,524	45,889.5	9	3,837
UH MANOA	220,471		15,379	217,280	-1	15,147	214,867	-1	15,000	211,670.5	-1	14,784	212,952.5	1	14,901
Lower Division	93,508		6,234	89,511	-4	5,970	86,116	-4	5,741	83,422	-3	5,562	85,220	2	5,677
Upper Division	86,024		5,735	88,691	3	5,911	87,993	-1	5,865	88,234	<1	5,881	85,817	-3	5,720
Graduate Level	40,939		3,410	39,078	-5	3,266	40,758	4	3,394	40,014.5	-2	3,341	41,915.5	5	3,504
UH HILO	39,760		2,655	40,638	2	2,715	40,656	<1	2,721	42,694	5	2,886	46,075	8	3,139
Lower Division	23,827		1,587	23,667	-1	1,576	23,923	1	1,592	24,228	1	1,615	25,467	5	1,698
Upper Division	15,589		1,038	16,397	5	1,092	16,065	-2	1,072	16,272	1	1,088	16,634	2	1,108
Graduate Level	344		30	574	67	47	668	16	57	2,194	228	183	3,974	81	333
UH WEST O'AHU	7,005		468	6,773	-3	452	6,645	-2	445	7,979	20	534	9,433	18	628
Lower Division										408		28	1,547	279	102
Upper Division	7,005		468	6,773	-3	452	6,645	-2	445	7,571	14	506	7,886	4	526
UH COMMUNITY COLLEGES	206,110		13,740	195,830	-5	13,059	196,555	<1	13,101	208,252.5	6	13,889	228,693.5	10	15,244
Lower Division	205,985		13,732	195,567	-5	13,041	195,989	<1	13,064	207,786.5	6	13,857	228,006.5	10	15,199
Upper Division	125		8	263	110	18	566	115	37	466	-18	32	687	47	45
HAWAI'I	21,089		1,405	19,237	-9	1,287	19,393	1	1,291	22,455	16	1,496	25,444	13	1,698
Lower Division	21,089		1,405	19,237	-9	1,287	19,393	1	1,291	22,455	16	1,496	25,444	13	1,698
HONOLULU	34,046		2,271	31,685	-7	2,115	31,881	1	2,125	30,876.5	-3	2,061	32,464.5	5	2,164
Lower Division	34,014		2,269	31,677	-7	2,114	31,677	0	2,112	30,733.5	-3	2,051	32,246.5	5	2,150
Upper Division	32		2	8	-75	1	204	2450	13	143	-30	10	218	52	14
KAPI'OLANI	58,840		3,916	57,244	-3	3,815	57,980	1	3,870	61,963	7	4,136	64,390	4	4,288
Lower Division	58,840		3,916	57,160	-3	3,809	57,861	1	3,862	61,865	7	4,129	64,236	4	4,278
Upper Division				84		6	119	42	8	98	-18	7	154	57	10
KAUA'I	8,352		557	7,865	-6	524	7,873	<1	525	7,926	1	529	9,519	20	635
Lower Division	8,352		557	7,865	-6	524	7,873	<1	525	7,926	1	529	9,519	20	635
LEEWARD	46,344		3,091	44,765	-3	2,987	45,524	2	3,032	48,759	7	3,250	53,571	10	3,572
Lower Division	46,344		3,091	44,765	-3	2,987	45,524	2	3,032	48,759	7	3,250	53,571	10	3,572
MAUI	23,387		1,560	21,555	-8	1,433	20,907	-3	1,394	22,758	9	1,518	28,311	24	1,886
Lower Division	23,294		1,554	21,384	-8	1,422	20,664	-3	1,378	22,533	9	1,503	27,996	24	1,865
Upper Division	93		6	171	84	11	243	42	16	225	-7	15	315	40	21
WINDWARD	14,052		940	13,479	-4	898	12,997	-4	864	13,515	4	899	14,994	11	1,001
Lower Division	14,052		940	13,479	-4	898	12,997	-4	864	13,515	4	899	14,994	11	1,001

1/ Percent change between -.49 and 0 is noted as (<1). Percent change between -.9 and -.5 is rounded to -1.

2/ General Education and Lower Division Curriculum of the UH West Oahu approved by Board of Regents in November 2006.

SERIES: Course Registration Report

SOURCE: Banner Operational Data Store (ODS), IRO_SOCAD

University of Hawai'i, Institutional Research Office

TABLE 3
Number of Classes and Average Class Size
 University of Hawai'i
 Spring 2005 to Spring 2009

College and Level	Spring 2005			Spring 2006			Spring 2007			Spring 2008			Spring 2009		
	CLASSES		AVG SIZE	CLASSES		AVG SIZE	CLASSES		AVG SIZE	CLASSES		AVG SIZE	CLASSES		AVG SIZE
	No.	%C		No.	%C		No.	%C		No.	%C		No.	%C	
UH TOTAL	7,897		20	7,784	-1	20	7,887	1	19	8,068	2	19	8,380	4	20
Lower Division	4,901		23	4,777	-3	22	4,804	1	22	4,956	3	22	5,205	5	22
Upper Division	1,935		19	1,928	(<1)	19	1,960	2	19	1,954	(<1)	19	1,959	<1	19
Graduate Level	1,061		11	1,079	2	10	1,123	4	10	1,158	3	10	1,216	5	11
UH MANOA	3,760		20	3,709	-1	20	3,734	1	19	3,718	(<1)	19	3,718	0	19
Lower Division	1,158		30	1,132	-2	29	1,098	-3	29	1,067	-3	28	1,045	-2	29
Upper Division	1,554		19	1,520	-2	19	1,540	1	19	1,522	-1	19	1,505	-1	19
Graduate Level	1,048		11	1,057	1	10	1,096	4	10	1,129	3	10	1,168	3	10
UH HILO	672		21	693	3	20	725	5	19	730	1	20	791	8	20
Lower Division	378		23	371	-2	23	395	6	22	388	-2	23	423	9	21
Upper Division	281		18	300	7	18	303	1	17	313	3	17	320	2	17
Graduate Level	13		9	22	69	8	27	23	7	29	7	26	48	66	30
UH WEST O'AHU	95		23	98	3	22	99	1	21	119	20	22	149	25	20
Lower Division										15		11	33	120	17
Upper Division	95		23	98	3	22	99	1	21	104	5	23	116	12	21
UH COMMUNITY COLLEGES	3,370		20	3,284	-3	20	3,329	1	20	3,501	5	20	3,722	6	21
Lower Division	3,365		20	3,274	-3	20	3,311	1	20	3,486	5	20	3,704	6	21
Upper Division	5		8	10	100	8	18	80	10	15	-17	10	18	20	11
HAWAII	414		18	381	-8	17	382	<1	17	410	7	18	461	12	19
Lower Division	414		18	381	-8	17	382	<1	17	410	7	18	461	12	19
HONOLULU	553		20	529	-4	19	530	<1	19	531	<1	19	541	2	19
Lower Division	552		20	529	-4	19	524	-1	19	526	<1	19	536	2	20
Upper Division	1		8				6		11	5	-17	9	5	0	11
KAPI'OLANI	949		20	913	-4	20	932	2	20	964	3	21	1,005	4	21
Lower Division	949		20	910	-4	20	929	2	21	961	3	21	1,001	4	21
Upper Division				3		8	3	0	11	3	0	9	4	33	11
KAUA'I	193		15	190	-2	15	196	3	14	186	-5	15	221	19	15
Lower Division	193		15	190	-2	15	196	3	14	186	-5	15	221	19	15
LEEWARD	689		22	697	1	21	703	1	21	793	13	21	836	5	21
Lower Division	689		22	697	1	21	703	1	21	793	13	21	836	5	21
MAUI	373		22	366	-2	20	382	4	18	401	5	20	443	10	22
Lower Division	369		22	359	-3	20	373	4	19	394	6	20	434	10	22
Upper Division	4		8	7	75	8	9	29	9	7	-22	10	9	29	11
WINDWARD	199		24	208	5	22	204	-2	22	216	6	22	215	(<1)	24
Lower Division	199		24	208	5	22	204	-2	22	216	6	22	215	(<1)	24

1/ Excludes courses numbered -93 (Cooperative Education), -99 (Individual Instruction or Directed Studies), 700 (Thesis Research), and 800 (Dissertation Research), Aerospace Studies and Military Science classes. For UH West O'ahu, senior projects and practicums are also excluded.

2/ Percent change between -.49 and 0 is noted as (<1). Percent change between -.9 and -.5 is rounded to -1.

3/ General Education and Lower Division Curriculum of the UH West Oahu approved by Board of Regents in November 2006.

SERIES: Course Registration Report

SOURCE: Banner Operational Data Store (ODS), IRO_SOCAD

University of Hawai'i, Institutional Research Office