

COURSE REGISTRATION REPORT
UNIVERSITY OF HAWAI'I
SPRING 1998

Institutional Research Office
University of Hawai'i
August 1998

File Reference: Management and Planning Support Folder, Courses

Reports now available online at: www2.hawaii.edu/iro/

University of Hawai'i System, Spring Semesters 1994-1998

Figure 1: Total Student Semester Hours (SSH)

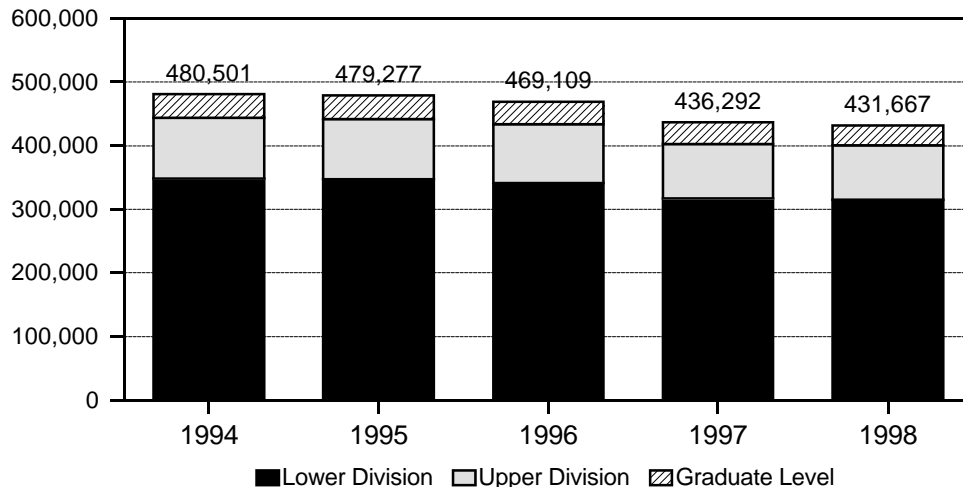


Figure 2: Average Class Size

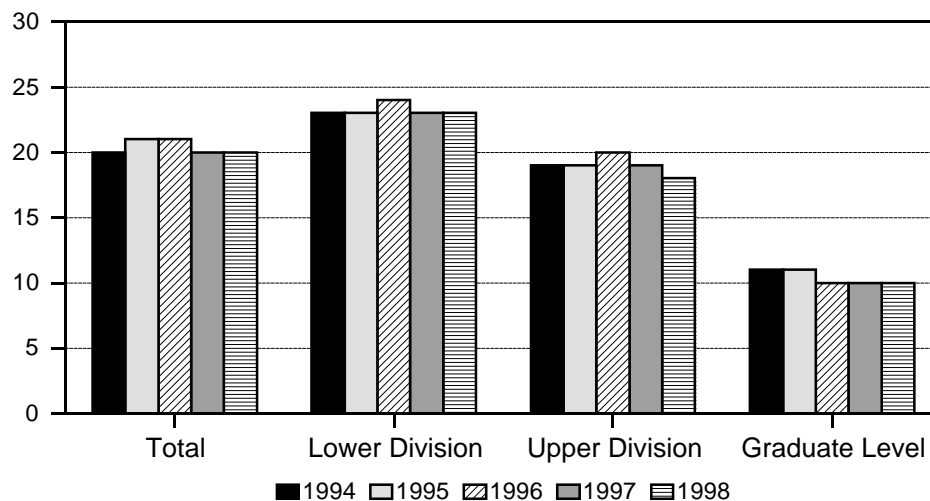


Figure 3: Average Class Size, by Unit

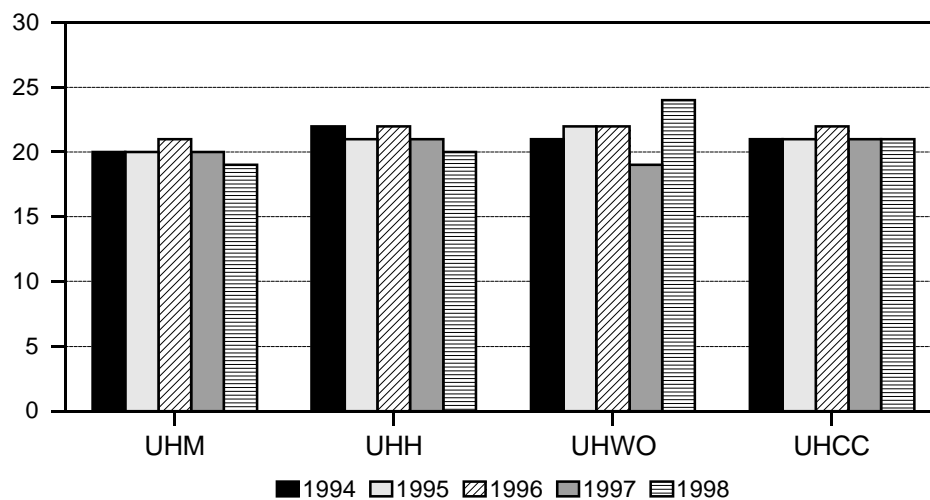


TABLE 1
 COURSE REGISTRATION SUMMARY, BY CAMPUS
 UNIVERSITY OF HAWAI'I
 SPRING 1998

CAMPUS AND COURSE LEVEL	COURSES	CLASSES *		SEM HOURS	STUDENT REGIS	STUDENT SEM HRS	COURSE FTE
		No.	Avg Size				
TOTAL	4,817	7,263	20	20,766	148,647	431,667	29,292
Lower Division	2,553	4,778	23	13,901	109,296	315,315	21,010
Upper Division	1,331	1,574	18	4,588	28,655	84,851	5,648
Graduate Level	933	911	10	2,277	10,696	31,501	2,634
UH AT MANOA	2,330	3,215	19	8,726	64,511	185,281	12,875
Lower Division	405	1,063	29	2,814	31,037	86,056	5,732
Upper Division	993	1,241	18	3,635	22,779	67,727	4,509
Graduate Level	932	911	10	2,277	10,695	31,498	2,634
UH AT HILO	452	537	20	1,452	10,720	29,984	1,993
Lower Division	185	286	24	749	6,795	18,721	1,245
Upper Division	266	251	15	703	3,924	11,260	748
Graduate Level	1				1	3	
UH - WEST O'AHU	72	82	24	250	1,952	5,864	391
UH COMMUNITY COLLEGES...	1,963	3,429	21	10,338	71,464	210,538	14,033
Hawai'i	232	382	18	1,203	7,153	21,780	1,454
Honolulu	372	527	22	1,696	11,924	35,156	2,344
Kapi'olani	414	900	22	2,720	19,662	58,897	3,923
Kaua'i	167	219	16	682	3,579	10,720	717
Leeward	323	798	21	2,365	16,689	49,726	3,315
Maui	311	402	20	1,091	8,247	22,076	1,470
Windward	144	201	21	581	4,210	12,183	810

* Excludes 093 (Cooperative Education), 099 (Individual Instruction), 486 (Senior Project, WO), 490 (Practicum, WO), 700 (Thesis Research), and 800 (Dissertation Research) courses.

TABLE 2
STUDENT SEMESTER HOURS (SSH) AND COURSE FTE
UNIVERSITY OF HAWAI'I
SPRING 1994 TO SPRING 1998

COLLEGE AND LEVEL	SPRING 1994			SPRING 1995			SPRING 1996			SPRING 1997			SPRING 1998		
	SSH No.	%C	COURSE FTE	SSH No.	%C	COURSE FTE	SSH No.	%C	COURSE FTE	SSH No.	%C	COURSE FTE	SSH No.	%C	COURSE FTE
TOTAL	480,501	4	32,674	479,277	0	32,567	469,109	-2	31,858	436,292	-7	29,651	431,667	-1	29,292
Lower Division	347,881	5	23,208	347,198	0	23,133	340,809	-2	22,715	316,712	-7	21,114	315,315	0	21,010
Upper Division	95,395	0	6,354	94,972	0	6,336	92,826	-2	6,181	86,242	-7	5,754	84,851	-2	5,648
Graduate Level	37,225	5	3,112	37,107	0	3,098	35,474	-4	2,962	33,338	-6	2,783	31,501	-6	2,634
UH AT MANOA	211,557	3	14,732	210,405	-1	14,653	206,715	-2	14,372	190,522	-8	13,260	185,281	-3	12,875
Lower Division	96,774	6	6,456	97,058	0	6,471	96,531	-1	6,434	87,788	-9	5,850	86,056	-2	5,732
Upper Division	77,558	-1	5,164	76,240	-2	5,084	74,785	-2	4,982	69,453	-7	4,632	67,727	-2	4,509
Graduate Level	37,225	5	3,112	37,107	0	3,098	35,399	-5	2,956	33,281	-6	2,778	31,498	-5	2,634
UH AT HILO	33,495	11	2,236	31,335	-6	2,091	31,621	1	2,106	30,711	-3	2,047	29,984	-2	1,993
Lower Division	21,625	10	1,444	18,979	-12	1,264	19,793	4	1,319	19,073	-4	1,269	18,721	-2	1,245
Upper Division	11,870	14	792	12,356	4	827	11,753	-5	781	11,581	-1	773	11,260	-3	748
Graduate Level							75		6	57	-24	5	3	-95	
UH - WEST O'AHU	5,967	-1	398	6,376	7	425	6,288	-1	418	5,208	-17	349	5,864	13	391
UH COMMUNITY COLLEGES...	229,482	4	15,308	231,161	1	15,398	224,485	-3	14,962	209,851	-7	13,995	210,538	0	14,033
Hawai'i	24,157	12	1,612	27,935	16	1,862	27,830	0	1,853	22,870	-18	1,528	21,780	-5	1,454
Honolulu	40,320	3	2,688	39,659	-2	2,644	36,980	-7	2,463	32,659	-12	2,181	35,156	8	2,344
Kapi'olani	61,504	2	4,099	59,211	-4	3,945	59,532	1	3,970	58,467	-2	3,900	58,897	1	3,923
Kaua'i	11,668	4	781	12,005	3	798	11,692	-3	777	11,323	-3	754	10,720	-5	717
Leeward	56,831	4	3,795	57,431	1	3,824	53,313	-7	3,556	50,226	-6	3,345	49,726	-1	3,315
Maui	20,971	7	1,397	21,108	1	1,406	22,190	5	1,481	22,033	-1	1,467	22,076	0	1,470
Windward	14,031	2	936	13,812	-2	919	12,948	-6	862	12,273	-5	820	12,183	-1	810

TABLE 3
NUMBER OF CLASSES AND AVERAGE CLASS SIZE *
UNIVERSITY OF HAWAI'I
SPRING 1994 TO SPRING 1998

COLLEGE AND LEVEL	SPRING 1994		SPRING 1995		SPRING 1996		SPRING 1997		SPRING 1998	
	No.	Avg Size	No.	Avg Size	No.	Avg Size	No.	Avg Size	No.	Avg Size
TOTAL	7,934	20	7,880	21	7,374	21	7,159	20	7,263	20
Lower Division	5,342	23	5,266	23	4,865	24	4,685	23	4,778	23
Upper Division	1,634	19	1,631	19	1,569	20	1,529	19	1,574	18
Graduate Level	958	11	983	11	940	10	945	10	911	10
UH AT MANOA	3,518	20	3,522	20	3,292	21	3,220	20	3,215	19
Lower Division	1,233	28	1,243	28	1,103	31	1,071	29	1,063	29
Upper Division	1,327	19	1,296	20	1,250	20	1,205	19	1,241	18
Graduate Level	958	11	983	11	939	10	944	10	911	10
UH AT HILO	537	22	516	21	508	22	520	21	537	20
Lower Division	324	24	277	25	280	25	285	24	286	24
Upper Division	213	18	239	17	227	17	234	17	251	15
Graduate Level					1	25	1	19		
UH - WEST O'AHU	94	21	96	22	92	22	90	19	82	24
UH COMMUNITY COLLEGES.	3,785	21	3,746	21	3,482	22	3,329	21	3,429	21
Hawai'i	402	20	446	21	456	21	377	20	382	18
Honolulu	581	21	593	20	525	21	517	19	527	22
Kapi'olani	1,017	21	949	21	909	22	859	22	900	22
Kaua'i	271	17	260	17	232	18	228	18	219	16
Leeward	870	22	885	22	788	23	773	22	798	21
Maui	417	19	388	20	369	22	375	21	402	20
Windward	227	21	225	21	203	22	200	21	201	21

* Excludes 093 (Cooperative Education), 099 (Individual Instruction), 486 (Senior Project, WO), 490 (Practicum, WO), 700 (Thesis Research), and 800 (Dissertation Research) courses.