

COURSE REGISTRATION REPORT
UNIVERSITY OF HAWAI'I – WEST O'AHU
FALL 2000

Institutional Research Office
University of Hawaii
December 2000

File Reference: Management and Planning Support Folder, Courses

Reports available online at: <http://www.hawaii.edu/iro/>

Figure 1
Student Semester Hours (SSH)

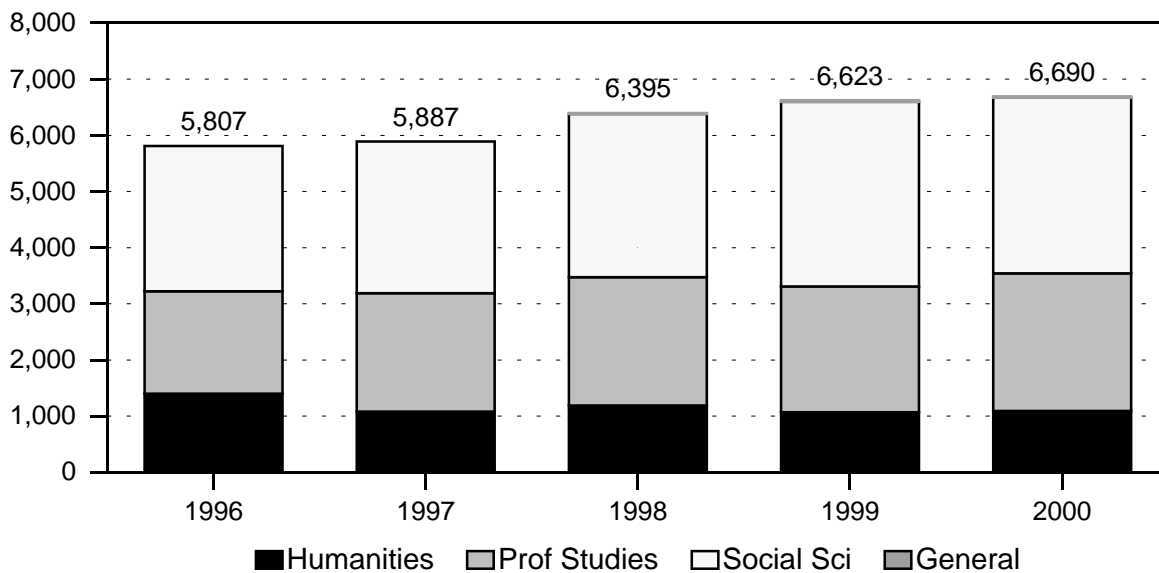


Figure 2
Total SSH, By Division

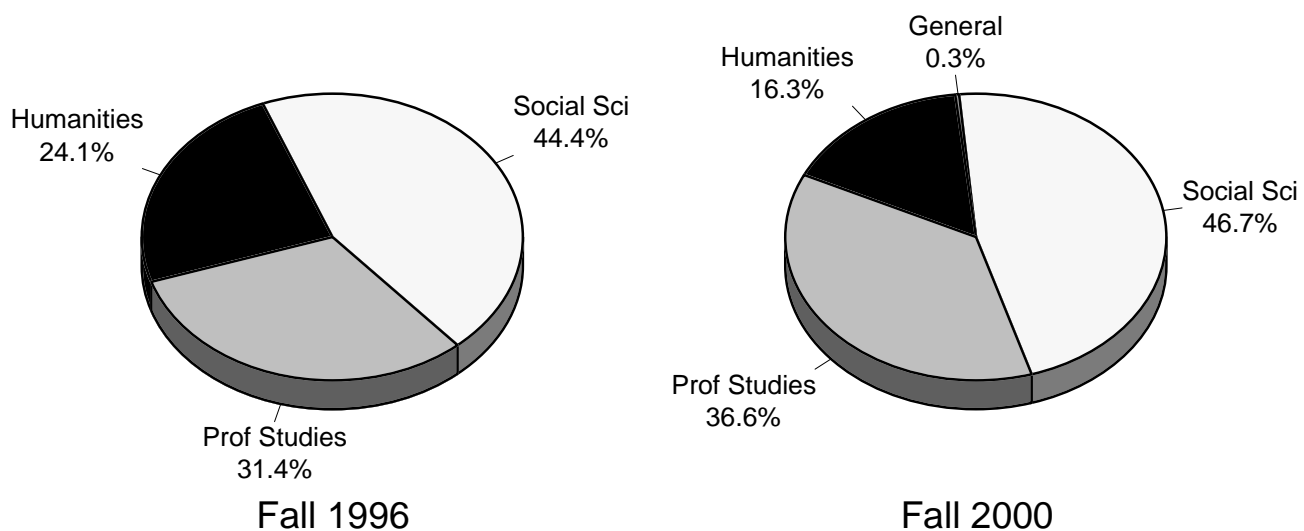


Figure 3
Course FTE

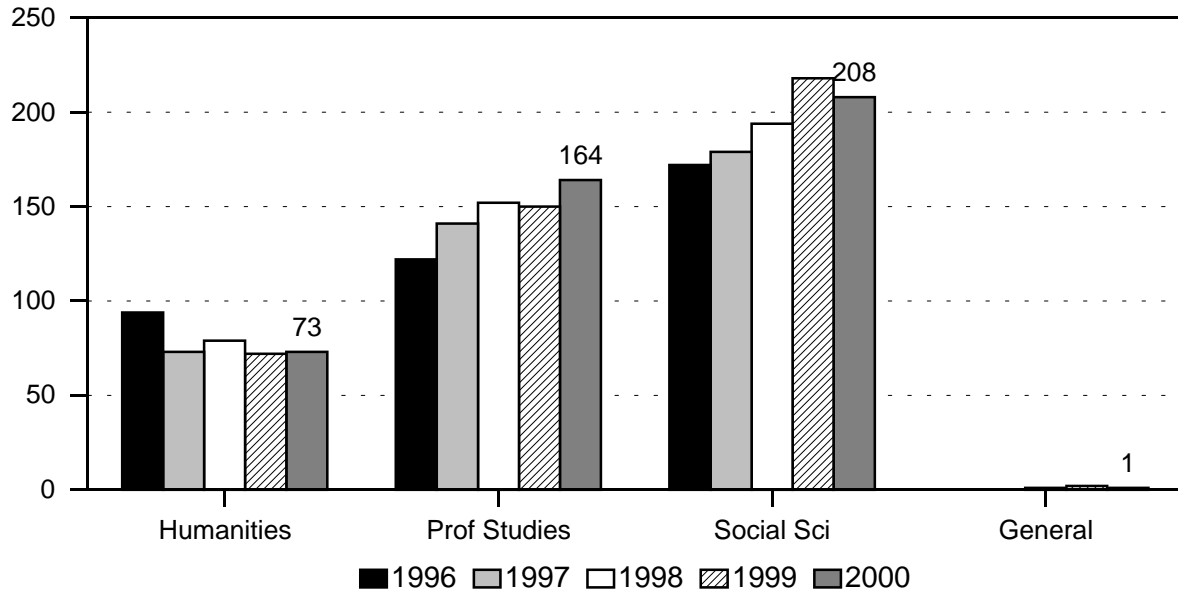


Figure 4
Average Class Size

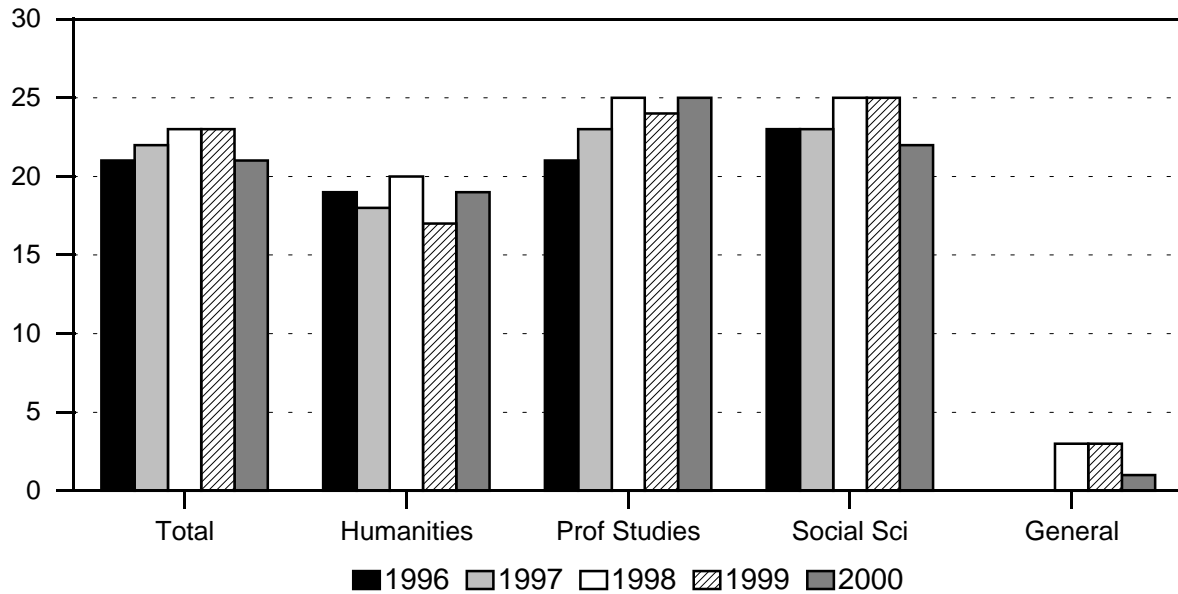


TABLE 1
 COURSE REGISTRATION SUMMARY, BY DIVISION AND COURSE OFFERING
 STUDENT SEMESTER HOURS AND COURSE FTE
 UNIVERSITY OF HAWAII - WEST O'AHU
 FALL 2000

DIVISION AND COURSE OFFERING	COURSES		CLASSES			SEMESTER HOURS		STUDENT REGISTRATIONS		STUDENT SEMESTER HRS		COURSE FTE
	No.	Pct.	No.	Pct.	Avg Size	No.	Pct.	No.	Pct.	No.	Pct.	No.
TOTAL	91	100.1	104	100.0	21	316	100.0	2,240	100.0	6,690	99.9	446
HUMANITIES	16	17.6	19	18.3	19	57	18.0	364	16.3	1,092	16.3	73
Hawn-Pac Studies 1/.....												
History	5	5.5	5	4.8	17	15	4.7	87	3.9	261	3.9	17
Humanities	3	3.3	6	5.8	25	18	5.7	154	6.9	462	6.9	31
Literature	5	5.5	5	4.8	17	15	4.7	85	3.8	255	3.8	17
Philosophy	3	3.3	3	2.9	12	9	2.8	38	1.7	114	1.7	8
PROFESS STUDIES	30	33.0	33	31.7	25	99	31.3	823	36.7	2,451	36.6	164
Business Admin	16	17.6	19	18.3	23	57	18.0	440	19.6	1,314	19.6	88
Public Admin	14	15.4	14	13.5	27	42	13.3	383	17.1	1,137	17.0	76
SOCIAL SCIENCES	41	45.1	46	44.2	22	138	43.7	1,047	46.7	3,125	46.7	208
Anthropology	6	6.6	6	5.8	22	18	5.7	131	5.8	393	5.9	26
Economics	3	3.3	3	2.9	23	9	2.8	72	3.2	208	3.1	14
Political Science	3	3.3	3	2.9	18	9	2.8	56	2.5	164	2.5	11
Psychology	16	17.6	17	16.3	23	51	16.1	401	17.9	1,199	17.9	80
Social Science	4	4.4	7	6.7	28	21	6.6	201	9.0	603	9.0	40
Sociology	9	9.9	10	9.6	19	30	9.5	186	8.3	558	8.3	37
GENERAL	4	4.4	6	5.8	1	22	7.0	6	0.3	22	0.3	1
Aerospace Studies	2	2.2	2	1.9	1	6	1.9	2	0.1	6	0.1	
Military Science 2/.....	2	2.2	4	3.8	1	16	5.1	4	0.2	16	0.2	1

1/ Added in Spring 1999.

2/ Added in Fall 1999.

Note: Adjustments are based on recommendations made by the campus.

TABLE 2
STUDENT SEMESTER HOURS AND COURSE FTE
UNIVERSITY OF HAWAII - WEST O'AHU
FALL 1996 TO FALL 2000

COURSE OFFERING	FALL 1996			FALL 1997			FALL 1998			FALL 1999			FALL 2000		
	SSH	%Chg	FTE	SSH	%Chg	FTE	SSH	%Chg	FTE	SSH	%Chg	FTE	SSH	%Chg	FTE
TOTAL	5,807	-9.5	388	5,887	1.4	393	6,395	8.6	426	6,623	3.6	442	6,690	1.0	446
HUMANITIES	1,400	13.3	94	1,080	-22.9	73	1,191	10.3	79	1,067	-10.4	72	1,092	2.1	73
English	305	8.2	20	234	-23.3	16									
Hawn-Pac Studies.....										144		10	0	-100.0	0
History	324	14.9	22	324	0.0	22	288	-11.1	19	266	-7.6	18	261	-1.9	17
Humanities	612	26.7	41	432	-29.4	29	468	8.3	31	408	-12.8	27	462	13.2	31
Literature							198		13	147	-25.8	10	255	73.5	17
Philosophy	159	-3.6	11	90	-43.4	6	237	163.3	16	102	-57.0	7	114	11.8	8
PROFESS STUDIES 1/...	1,826	0.6	122	2,109	15.5	141	2,285	8.3	152	2,240	-2.0	150	2,451	9.4	164
Business Admin	945	-18.2	63	1,072	13.4	71	1,161	8.3	77	1,284	10.6	86	1,314	2.3	88
Profess Studies	301	123.0	20	189	-37.2	13	336	77.8	22	0	-100.0	0	0		0
Public Admin	580	10.5	39	848	46.2	57	788	-7.1	53	956	21.3	64	1,137	18.9	76
SOCIAL SCIENCES	2,581	-23.3	172	2,698	4.5	179	2,901	7.5	194	3,290	13.4	218	3,125	-5.0	208
Anthropology	297	5.3	20	271	-8.8	18	276	1.8	18	442	60.1	29	393	-11.1	26
Economics	225	-16.7	15	267	18.7	18	240	-10.1	16	261	8.8	17	208	-20.3	14
Political Science	93	-68.0	6	82	-11.8	5	153	86.6	10	283	85.0	19	164	-42.0	11
Psychology	895	-20.7	60	965	7.8	64	1,134	17.5	76	1,259	11.0	84	1,199	-4.8	80
Social Science	495	-22.9	33	627	26.7	42	519	-17.2	35	546	5.2	36	603	10.4	40
Sociology	576	-23.5	38	486	-15.6	32	579	19.1	39	499	-13.8	33	558	11.8	37
GENERAL 1/.....							18		1	26	44.4	2	22	-15.4	1
Aerospace Studies 1/...							18		1	18	0.0	1	6	-66.7	0
Military Science.....										8		1	16	100.0	1

1/ Aerospace Studies was reported under Professional Studies in Fall 1998. Therefore, totals and percentage changes differ from Fall 1998 report.

TABLE 3
NUMBER OF CLASSES AND AVERAGE CLASS SIZE
UNIVERSITY OF HAWAII - WEST O'AHU
FALL 1996 TO FALL 2000

COURSE OFFERING	FALL 1996			FALL 1997			FALL 1998			FALL 1999			FALL 2000		
	No. of Classes	%Chg	Avg Size	No. of Classes	%Chg	Avg Size	No. of Classes	%Chg	Avg Size	No. of Classes	%Chg	Avg Size	No. of Classes	%Chg	Avg Size
TOTAL	90	-1.1	21	90	0.0	22	90	0.0	23	94	4.4	23	104	10.6	21
HUMANITIES	24	14.3	19	20	-16.7	18	19	-5.0	20	20	5.3	17	19	-5.0	19
English	6		17	6		13									
Hawn-Pac Studies.....										2		24			
History	6		18	5		21	4		23	6		14	5		17
Humanities	9		23	7		20	7		21	6		21	6		25
Literature							5		13	3		16	5		17
Philosophy	3		18	2		15	3		26	3		11	3		12
PROFESS STUDIES 1/...	28	7.7	21	31	10.7	23	30	-3.2	25	29	-3.3	24	33	13.8	25
Business Admin	13		24	16		22	16		24	16		26	19		23
Profess Studies	5		20	3		21	5		21						
Public Admin	10		19	12		23	9		29	13		22	14		27
SOCIAL SCIENCES	38	-13.6	23	39	2.6	23	39	0.0	25	42	7.7	25	46	9.5	22
Anthropology	5		20	5		18	5		18	6		24	6		22
Economics	5		15	4		22	3		25	4		21	3		23
Political Science	3		10	2		14	3		17	4		20	3		18
Psychology	11		27	14		23	14		27	16		26	17		23
Social Science	6		28	8		25	6		28	6		29	7		28
Sociology	8		24	6		27	8		24	6		28	10		19
GENERAL 1/.....							2		3	3	50.0	3	6	100.0	1
Aerospace Studies 1/....							2		3	2		3	2		1
Military Science.....										1		2	4		1

1/ Aerospace Studies was reported under Professional Studies in Fall 1998. Therefore, totals and percentage changes differ from Fall 1998 report.