

COURSE REGISTRATION REPORT
UNIVERSITY OF HAWAI'I – WEST O'AHU
FALL 2004

Institutional Research Office
University of Hawai'i
March 2005

File Reference: Management and Planning Support Folder, Courses

Reports available online at: <http://www.hawaii.edu/iro/maps.htm>

University of Hawai'i - West O'ahu, Fall 2000 to Fall 2004

Figure 1
Student Semester Hours (SSH)

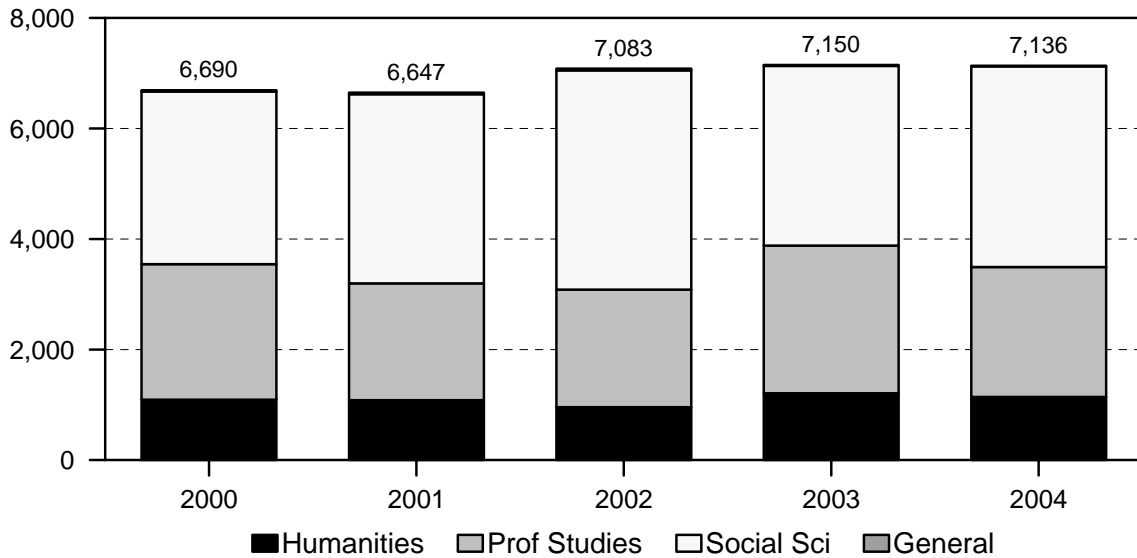
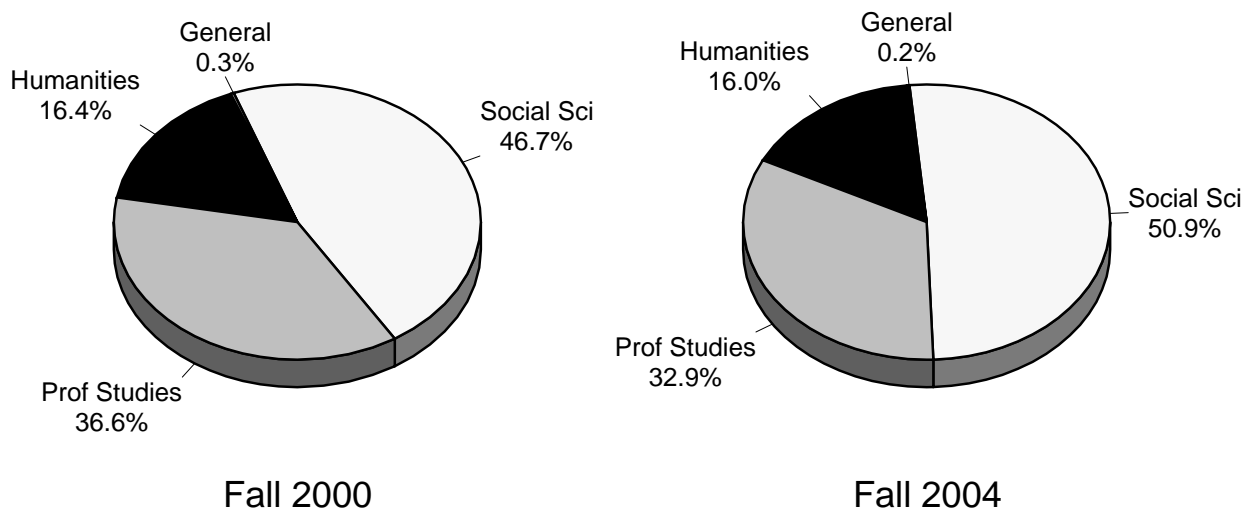


Figure 2
Total SSH, By Division



University of Hawai'i - West O'ahu, Fall 2000 to Fall 2004

Figure 3
Course FTE

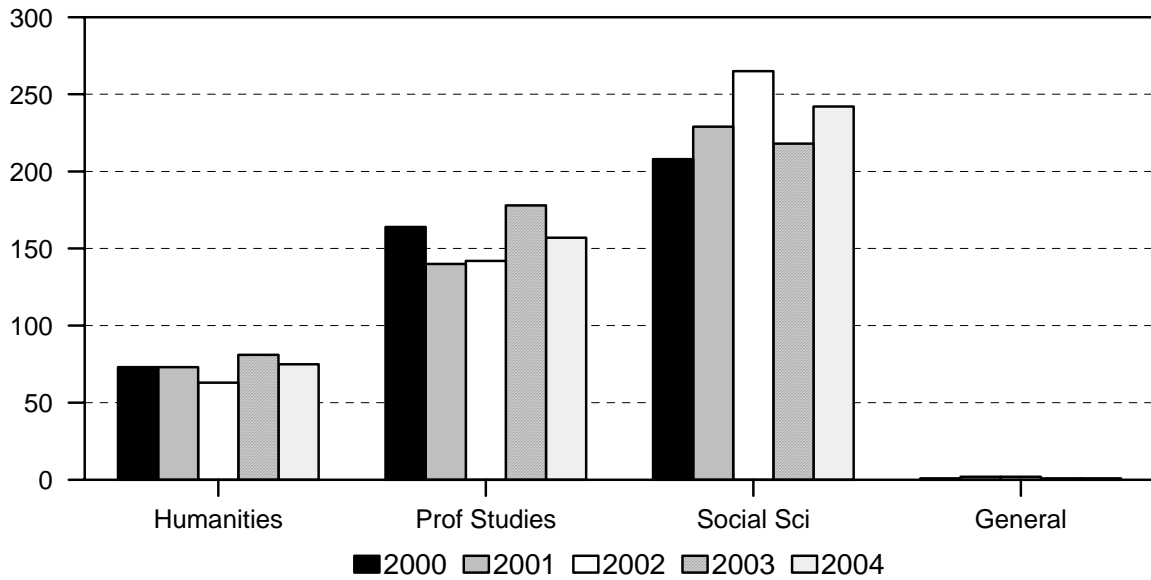


Figure 4
Average Class Size

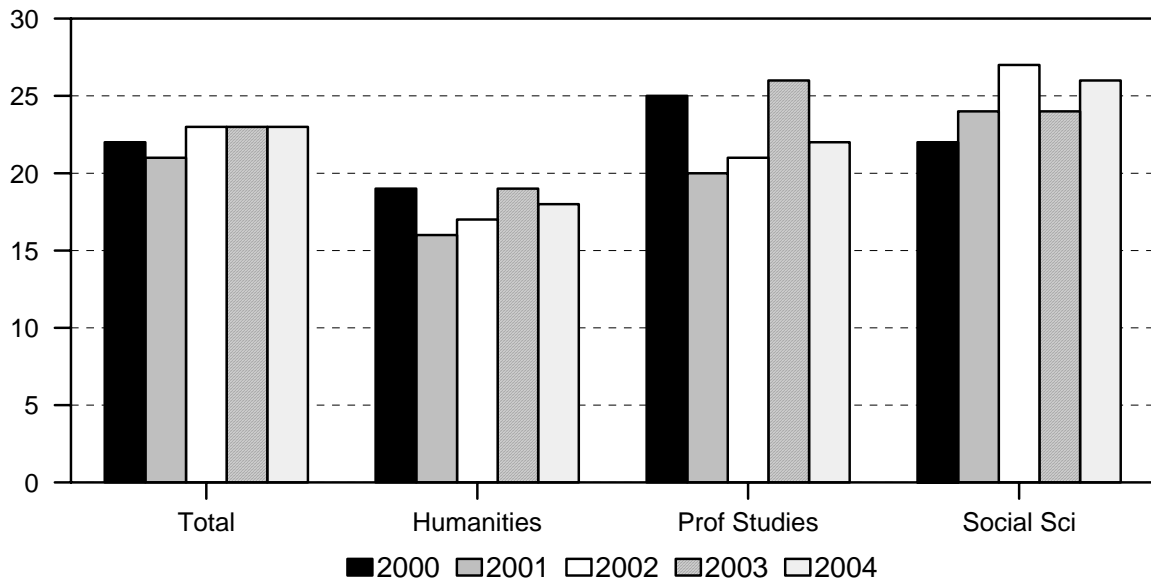


TABLE 1
 COURSE REGISTRATION SUMMARY, BY DIVISION AND COURSE OFFERING
 UNIVERSITY OF HAWAI'I - WEST O'AHU
 FALL 2004

DIVISION AND COURSE OFFERING	COURSES		CLASSES 1/			SEMESTER HOURS		STUDENT REGISTRATIONS		STUDENT SEMESTER HRS		COURSE FTE No.
	No.	Pct.	No.	Pct.	Avg Size	No.	Pct.	No.	Pct.	No.	Pct.	
TOTAL	88	100.0	98	100.0	23	303	100.0	2,389	100.0	7,136	100.0	475
HUMANITIES	17	19.3	20	20.4	18	60	19.8	381	15.9	1,142	16.0	75
Hawn-Pac Studies	4	4.5	4	4.1	19	12	4.0	81	3.4	244	3.4	16
History	4	4.5	4	4.1	16	12	4.0	65	2.7	193	2.7	13
Humanities	2	2.3	5	5.1	21	21	6.9	122	5.1	366	5.1	24
Literature	4	4.5	4	4.1	13	12	4.0	52	2.2	156	2.2	10
Philosophy	3	3.4	3	3.1	20	3	1.0	61	2.6	183	2.6	12
PROFESS STUDIES	31	35.2	33	33.7	22	99	32.7	785	32.9	2,350	32.9	157
Business Admin	13	14.8	15	15.3	22	45	14.9	359	15.0	1,075	15.1	72
Public Admin	18	20.5	18	18.4	22	54	17.8	426	17.8	1,275	17.9	85
SOCIAL SCIENCES	37	42.0	45	45.9	26	133	43.9	1,219	51.0	3,629	50.9	242
Anthropology	5	5.7	5	5.1	25	15	5.0	134	5.6	401	5.6	27
Economics	4	4.5	5	5.1	24	15	5.0	118	4.9	354	5.0	24
Political Science	4	4.5	4	4.1	12	12	4.0	49	2.1	147	2.1	10
Psychology	15	17.0	18	18.4	27	52	17.2	486	20.3	1,431	20.1	95
Social Science	3	3.4	7	7.1	31	21	6.9	267	11.2	801	11.2	53
Sociology	6	6.8	6	6.1	28	18	5.9	165	6.9	495	6.9	33
GENERAL	3	3.4				11	3.6	4	0.2	15	0.2	1
Aerospace Studies	1	1.1				3	1.0	1	0.0	3	0.0	
Military Science	2	2.3				8	2.6	3	0.1	12	0.2	1

1/ Excludes directed reading and research, practicum, and senior project classes. Also excludes Aerospace Studies and Military Science classes.

Note: Adjustments are based on recommendations made by the campus.

TABLE 2
STUDENT SEMESTER HOURS AND COURSE FTE
UNIVERSITY OF HAWAI'I - WEST O'AHU
FALL 2000 TO FALL 2004

COURSE OFFERING	FALL 2000			FALL 2001			FALL 2002			FALL 2003			FALL 2004		
	SSH	%Chg	FTE	SSH	%Chg	FTE	SSH	%Chg	FTE	SSH	%Chg	FTE	SSH	%Chg	FTE
TOTAL	6,690	1.0	446	6,647	-0.6	444	7,083	6.6	472	7,150	0.9	478	7,136	-0.2	475
HUMANITIES	1,092	2.3	73	1,083	-0.8	73	958	-11.5	63	1,210	26.3	81	1,142	-5.6	75
Hawn-Pac Studies		-100.0		21		1	210	900.0	14	160	-23.8	11	244	52.5	16
History	261	-1.9	17	177	-32.2	12	170	-4.0	11	280	64.7	19	193	-31.1	13
Humanities	462	13.2	31	504	9.1	34	336	-33.3	22	408	21.4	27	366	-10.3	24
Literature	255	73.5	17	206	-19.2	14	155	-24.8	10	86	-44.5	6	156	81.4	10
Philosophy	114	11.8	8	175	53.5	12	87	-50.3	6	276	217.2	18	183	-33.7	12
PROFESS STUDIES	2,451	9.4	164	2,113	-13.8	140	2,128	0.7	142	2,671	25.5	178	2,350	-12.0	157
Business Admin	1,314	2.3	88	1,117	-15.0	74	1,015	-9.1	68	1,374	35.4	92	1,075	-21.8	72
Public Admin	1,137	18.9	76	996	-12.4	66	1,113	11.7	74	1,297	16.5	86	1,275	-1.7	85
SOCIAL SCIENCES	3,125	-5.0	208	3,426	9.6	229	3,966	15.8	265	3,251	-18.0	218	3,629	11.6	242
Anthropology	393	-11.1	26	495	26.0	33	394	-20.4	26	273	-30.7	18	401	46.9	27
Economics	208	-20.3	14	235	13.0	16	359	52.8	24	222	-38.2	15	354	59.5	24
Political Science	164	-42.0	11	205	25.0	14	450	119.5	30	204	-54.7	14	147	-27.9	10
Psychology	1,199	-4.8	80	1,347	12.3	90	1,374	2.0	92	1,241	-9.7	83	1,431	15.3	95
Social Science	603	10.4	40	492	-18.4	33	750	52.4	50	549	-26.8	37	801	45.9	53
Sociology	558	11.8	37	652	16.8	43	639	-2.0	43	762	19.2	51	495	-35.0	33
GENERAL	22	-15.4	1	25	13.6	2	31	24.0	2	18	-41.9	1	15	-16.7	1
Aerospace Studies	6	-66.7	0	9	50.0	1	15	66.7	1	6	-60.0	0	3	-50.0	0
Military Science	16	100.0	1	16	0.0	1	16	0.0	1	12	-25.0	1	12	0.0	1

TABLE 3
NUMBER OF CLASSES AND AVERAGE CLASS SIZE 1/
UNIVERSITY OF HAWAI'I - WEST O'AHU
FALL 2000 TO FALL 2004

COURSE OFFERING	FALL 2000			FALL 2001			FALL 2002			FALL 2003			FALL 2004		
	No. of Classes	%Chg	Avg Size	No. of Classes	%Chg	Avg Size	No. of Classes	%Chg	Avg Size	No. of Classes	%Chg	Avg Size	No. of Classes	%Chg	Avg Size
TOTAL	98	7.7	22	97	-1.0	21	95	-2.1	23	96	1.1	23	98	2.1	23
HUMANITIES	19	-5.0	19	20	5.3	16	17	-15.0	17	20	17.6	19	20	0.0	18
Hawn-Pac Studies				1		7	3		23	3		17	4		19
History	5		17	4		14	3		18	5		18	4		16
Humanities	6		25	7		20	4		22	5		23	5		21
Literature	5		17	4		17	4		13	2		12	4		13
Philosophy	3		12	4		14	3		10	5		18	3		20
PROFESS STUDIES	33	13.8	25	32	-3.0	20	32	0.0	21	33	3.1	26	33	0.0	22
Business Admin	19		23	13		26	14		23	16		28	15		22
Public Admin	14		27	19		17	18		20	17		24	18		22
SOCIAL SCIENCES	46	9.5	22	45	-2.2	24	46	2.2	27	43	-6.5	24	45	4.7	26
Anthropology	6		22	6		28	6		22	5		18	5		25
Economics	3		23	3		24	5		24	3		24	5		24
Political Science	3		18	3		20	6		25	4		17	4		12
Psychology	17		23	19		24	15		30	15		27	18		27
Social Science	7		28	5		26	6		34	6		24	7		31
Sociology	10		19	9		24	8		27	10		25	6		28

1/ Excludes directed reading and research, practicum, and senior project classes.
Beginning Spring 2003, also excludes Aerospace Studies and Military Science classes. Data have been adjusted for previous years.

Note: Adjustments are based on recommendations made by the campus.