

COURSE REGISTRATION REPORT
UNIVERSITY OF HAWAI'I – WEST O'AHU
FALL 2005

Institutional Research Office
University of Hawai'i
March 2006

File Reference: Management and Planning Support Folder, Courses

Reports available online at: <http://www.hawaii.edu/iro/maps.htm>

University of Hawai'i - West O'ahu, Fall 2001 to Fall 2005

Figure 1
Student Semester Hours (SSH)

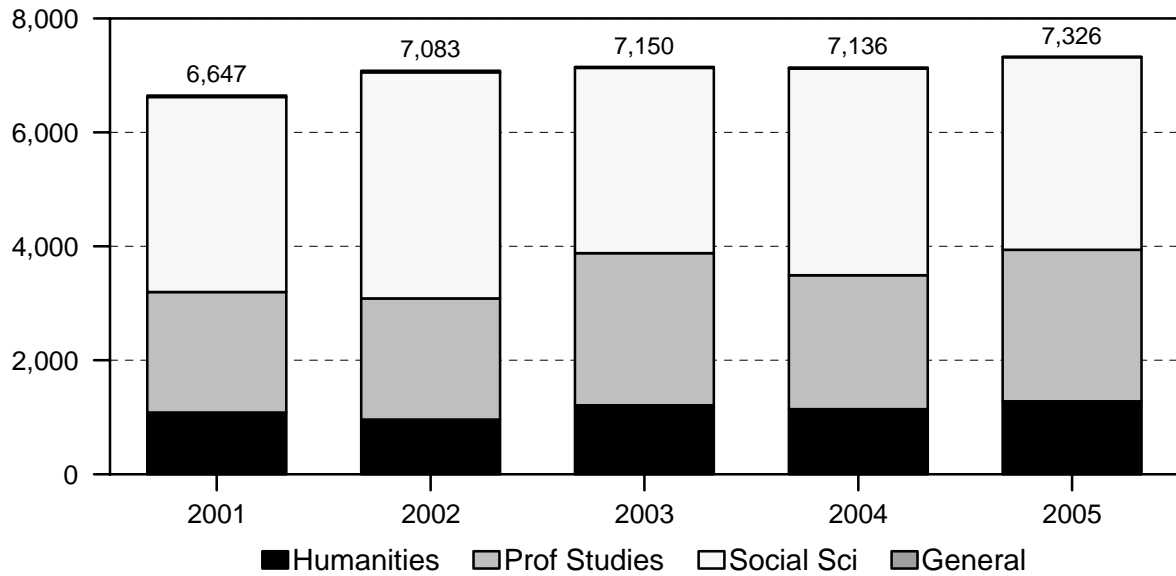
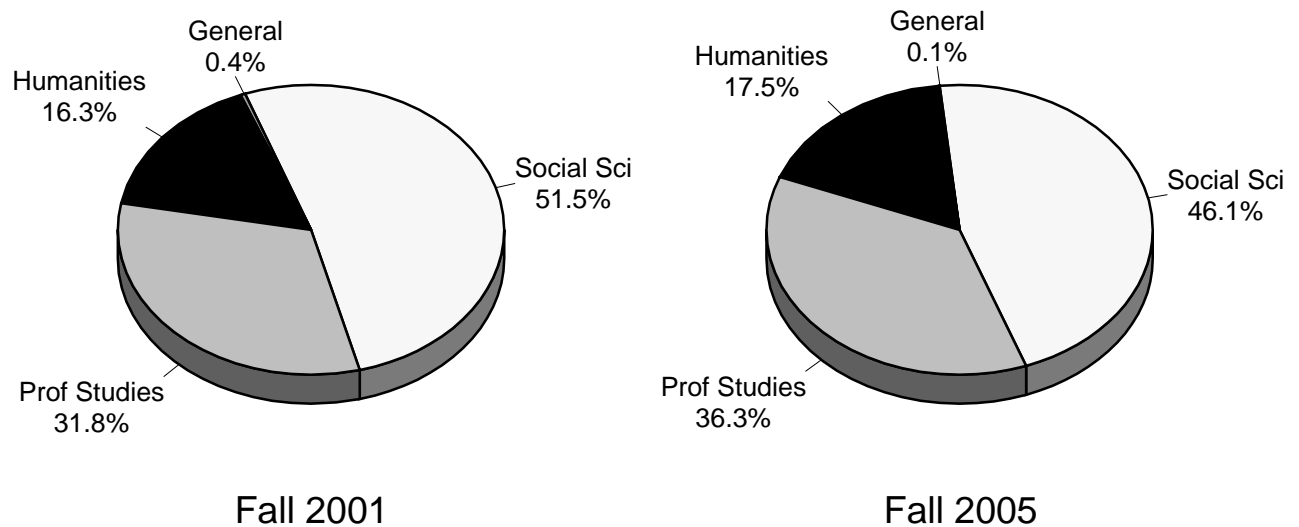


Figure 2
Total SSH, By Division



University of Hawai'i - West O'ahu, Fall 2001 to Fall 2005

Figure 3
Course FTE

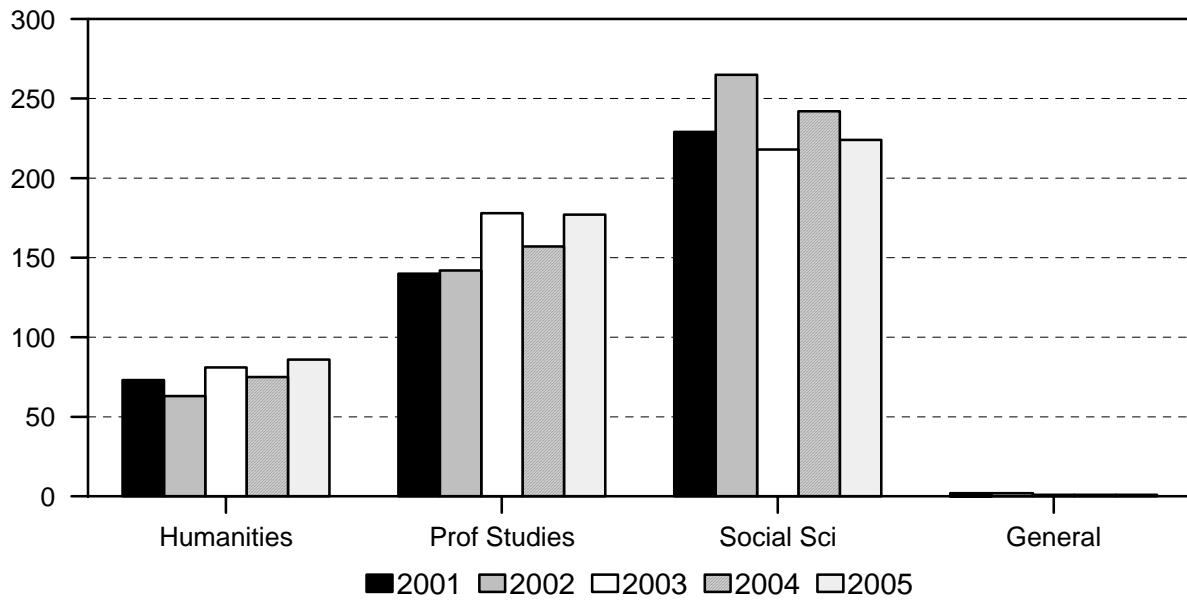


Figure 4
Average Class Size

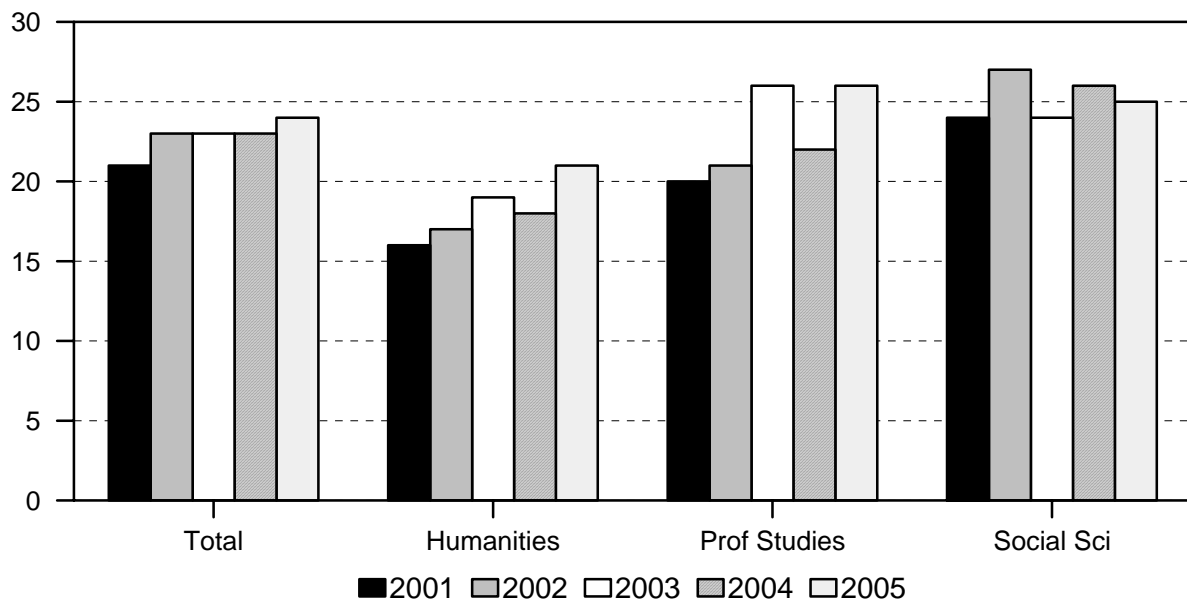


TABLE 1
 COURSE REGISTRATION SUMMARY, BY DIVISION AND COURSE OFFERING
 UNIVERSITY OF HAWAII - WEST O'AHU
 FALL 2005

DIVISION AND COURSE OFFERING	COURSES		CLASSES 1/			SEMESTER HOURS		STUDENT REGISTRATIONS		STUDENT SEMESTER HRS		COURSE FTE
	No.	Pct.	No.	Pct.	Avg Size	No.	Pct.	No.	Pct.	No.	Pct.	No.
TOTAL	88	100.0	95	100.0	24	291	100.0	2,456	100.0	7,326	100.0	488
HUMANITIES	16	18.2	19	20.0	21	57	19.6	427	17.4	1,281	17.5	86
Hawn-Pac Studies	3	3.4	3	3.2	25	9	3.1	74	3.0	222	3.0	15
History	4	4.5	4	4.2	22	12	4.1	90	3.7	270	3.7	18
Humanities	3	3.4	5	5.3	21	15	5.2	134	5.5	402	5.5	27
Literature	3	3.4	4	4.2	19	12	4.1	78	3.2	234	3.2	16
Philosophy	3	3.4	3	3.2	17	9	3.1	51	2.1	153	2.1	10
PROFESS STUDIES	32	36.4	32	33.7	26	96	33.0	886	36.1	2,658	36.3	177
Business Admin	16	18.2	16	16.8	28	48	16.5	480	19.5	1,440	19.7	96
Public Admin	16	18.2	16	16.8	24	48	16.5	406	16.5	1,218	16.6	81
SOCIAL SCIENCES	38	43.2	44	46.3	25	130	44.7	1,141	46.5	3,379	46.1	224
Anthropology	3	3.4	3	3.2	25	9	3.1	76	3.1	228	3.1	15
Economics	4	4.5	4	4.2	25	12	4.1	99	4.0	297	4.1	20
Political Science	5	5.7	5	5.3	20	15	5.2	101	4.1	303	4.1	20
Psychology	13	14.8	15	15.8	26	43	14.8	396	16.1	1,144	15.6	76
Social Science	6	6.8	10	10.5	23	30	10.3	277	11.3	831	11.3	55
Sociology	7	8.0	7	7.4	27	21	7.2	192	7.8	576	7.9	38
GENERAL	2	2.3	0	0.0		8	2.7	2	0.1	8	0.1	1
Military Science	2	2.3	0	0.0		8	2.7	2	0.1	8	0.1	1

1/ Excludes directed reading and research, practicum, and senior project classes. Also excludes Aerospace Studies and Military Science classes.

TABLE 2
STUDENT SEMESTER HOURS AND COURSE FTE
UNIVERSITY OF HAWAI'I - WEST O'AHU
FALL 2001 TO FALL 2005

COURSE OFFERING	FALL 2001			FALL 2002			FALL 2003			FALL 2004			FALL 2005		
	SSH	%Chg	FTE	SSH	%Chg	FTE	SSH	%Chg	FTE	SSH	%Chg	FTE	SSH	%Chg	FTE
TOTAL	6,647	-0.6	444	7,083	6.6	472	7,150	0.9	478	7,136	-0.2	475	7,326	2.7	488
HUMANITIES	1,083	-0.8	73	958	-11.5	63	1,210	26.3	81	1,142	-5.6	75	1,281	12.2	86
Hawn-Pac Studies	21		1	210	900.0	14	160	-23.8	11	244	52.5	16	222	-9.0	15
History	177	-32.2	12	170	-4.0	11	280	64.7	19	193	-31.1	13	270	39.9	18
Humanities	504	9.1	34	336	-33.3	22	408	21.4	27	366	-10.3	24	402	9.8	27
Literature	206	-19.2	14	155	-24.8	10	86	-44.5	6	156	81.4	10	234	50.0	16
Philosophy	175	53.5	12	87	-50.3	6	276	217.2	18	183	-33.7	12	153	-16.4	10
PROFESS STUDIES	2,113	-13.8	140	2,128	0.7	142	2,671	25.5	178	2,350	-12.0	157	2,658	13.1	177
Business Admin	1,117	-15.0	74	1,015	-9.1	68	1,374	35.4	92	1,075	-21.8	72	1,440	34.0	96
Public Admin	996	-12.4	66	1,113	11.7	74	1,297	16.5	86	1,275	-1.7	85	1,218	-4.5	81
SOCIAL SCIENCES	3,426	9.6	229	3,966	15.8	265	3,251	-18.0	218	3,629	11.6	242	3,379	-6.9	224
Anthropology	495	26.0	33	394	-20.4	26	273	-30.7	18	401	46.9	27	228	-43.1	15
Economics	235	13.0	16	359	52.8	24	222	-38.2	15	354	59.5	24	297	-16.1	20
Political Science	205	25.0	14	450	119.5	30	204	-54.7	14	147	-27.9	10	303	106.1	20
Psychology	1,347	12.3	90	1,374	2.0	92	1,241	-9.7	83	1,431	15.3	95	1,144	-20.1	76
Social Science	492	-18.4	33	750	52.4	50	549	-26.8	37	801	45.9	53	831	3.7	55
Sociology	652	16.8	43	639	-2.0	43	762	19.2	51	495	-35.0	33	576	16.4	38
GENERAL	25	13.6	2	31	24.0	2	18	-41.9	1	15	-16.7	1	8	-46.7	1
Aerospace Studies	9	50.0	1	15	66.7	1	6	-60.0	< 1	3	-50.0	< 1	0	-100.0	0
Military Science	16	0.0	1	16	0.0	1	12	-25.0	1	12	0.0	1	8	-33.3	1

TABLE 3
NUMBER OF CLASSES AND AVERAGE CLASS SIZE 1/
UNIVERSITY OF HAWAI'I - WEST O'AHU
FALL 2001 TO FALL 2005

COURSE OFFERING	FALL 2001			FALL 2002			FALL 2003			FALL 2004			FALL 2005		
	No. of Classes	%Chg	Avg Size	No. of Classes	%Chg	Avg Size	No. of Classes	%Chg	Avg Size	No. of Classes	%Chg	Avg Size	No. of Classes	%Chg	Avg Size
TOTAL	97	-1.0	21	95	-2.1	23	96	1.1	23	98	2.1	23	95	-3.1	24
HUMANITIES	20	5.3	16	17	-15.0	17	20	17.6	19	20	0.0	18	19	-5.0	21
Hawn-Pac Studies	1		7	3		23	3		17	4		19	3		25
History	4		14	3		18	5		18	4		16	4		22
Humanities	7		20	4		22	5		23	5		21	5		21
Literature	4		17	4		13	2		12	4		13	4		19
Philosophy	4		14	3		10	5		18	3		20	3		17
PROFESS STUDIES	32	-3.0	20	32	0.0	21	33	3.1	26	33	0.0	22	32	-3.0	26
Business Admin	13		26	14		23	16		28	15		22	16		28
Public Admin	19		17	18		20	17		24	18		22	16		24
SOCIAL SCIENCES	45	-2.2	24	46	2.2	27	43	-6.5	24	45	4.7	26	44	-2.2	25
Anthropology	6		28	6		22	5		18	5		25	3		25
Economics	3		24	5		24	3		24	5		24	4		25
Political Science	3		20	6		25	4		17	4		12	5		20
Psychology	19		24	15		30	15		27	18		27	15		26
Social Science	5		26	6		34	6		24	7		31	10		23
Sociology	9		24	8		27	10		25	6		28	7		27

1/ Excludes directed reading and research, practicum, and senior project classes.
Beginning Spring 2003, also excludes Aerospace Studies and Military Science classes. Data have been adjusted
for previous years.