

**COURSE REGISTRATION REPORT**  
**UNIVERSITY OF HAWAII | WEST O AHU**  
**FALL 1997**

Institutional Research Office  
University of Hawai'i  
October 1997

File Reference: Management and Planning Support Folder, Courses

Reports now available online at : <http://www2.hawaii.edu/iro/>

# University of Hawai'i - West O'ahu, Fall 1993 to Fall 1997

---

Figure 1  
Student Semester Hours (SSH)

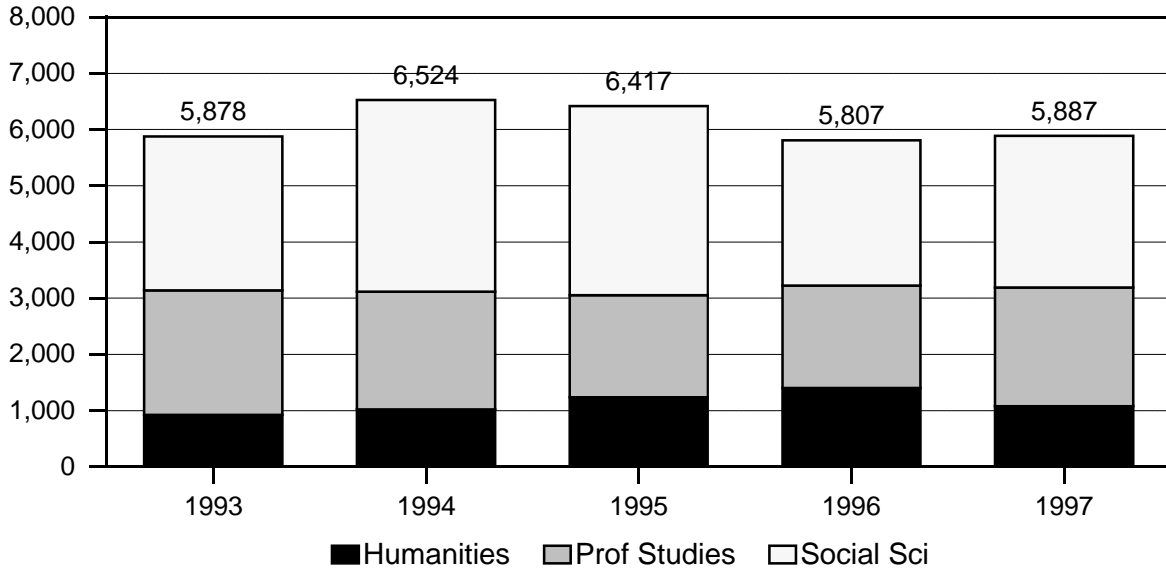


Figure 2  
Total SSH, By Division

---

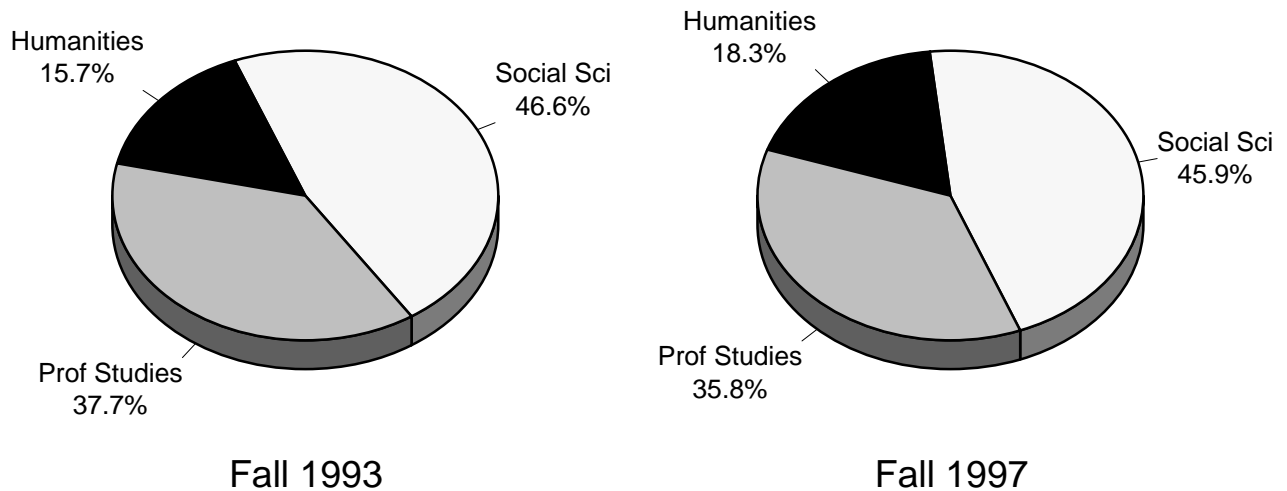


Figure 3  
Course FTE

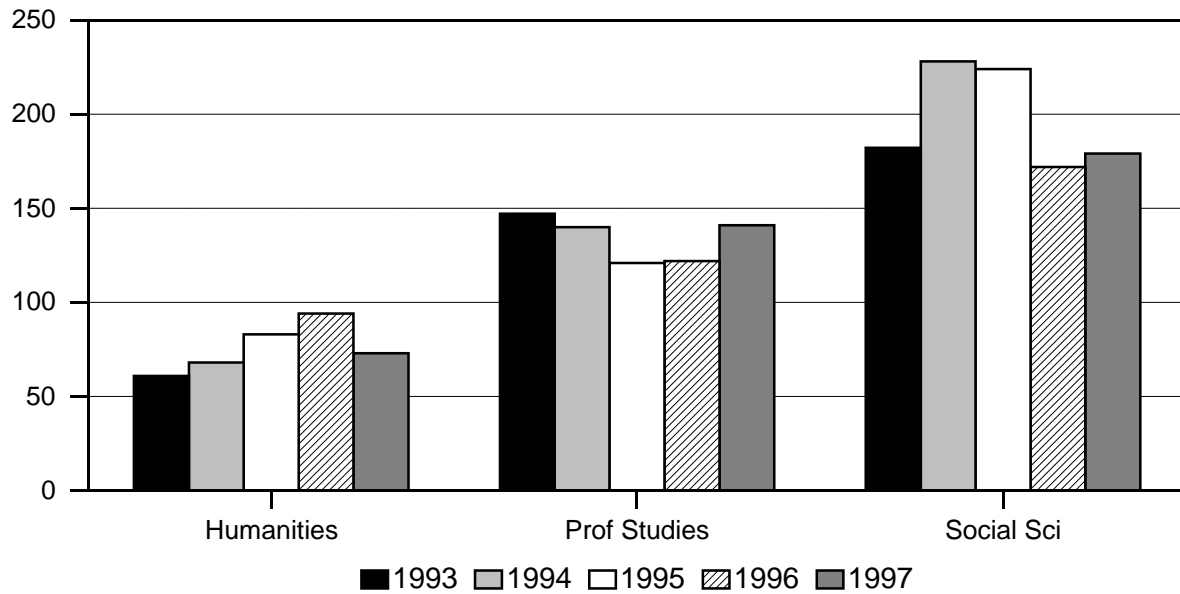


Figure 4  
Average Class Size

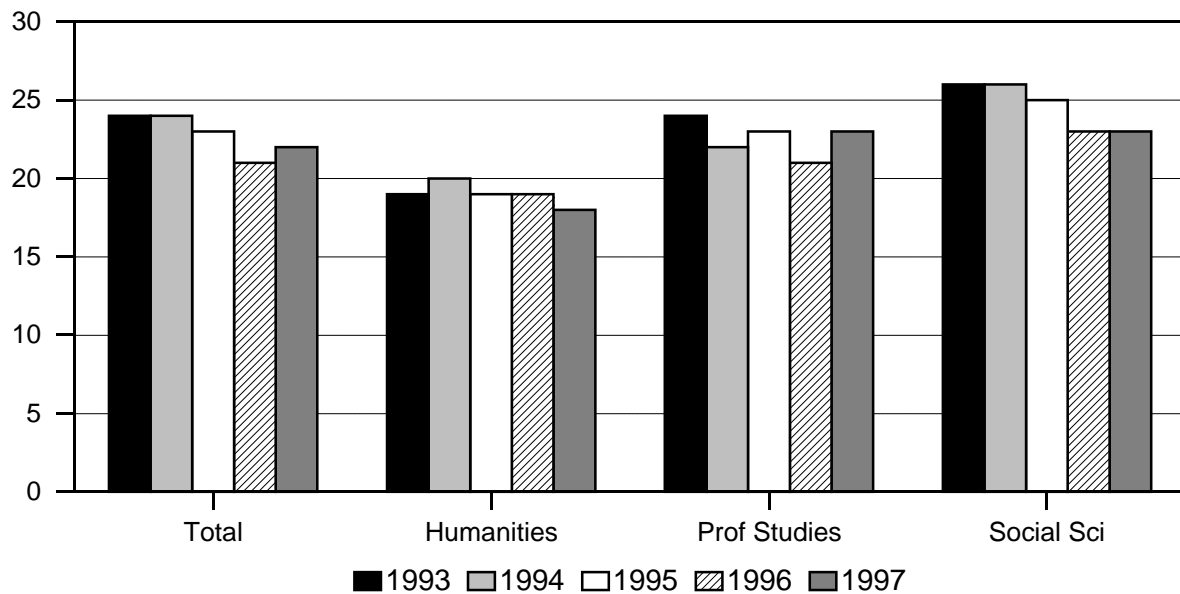


TABLE 1  
 COURSE REGISTRATION SUMMARY, BY DIVISION AND COURSE OFFERING  
 UNIVERSITY OF HAWAI'I - WEST O'AHU  
 FALL 1997

DIVISION AND COURSE OFFERING	COURSES		CLASSES		SEMESTER HOURS		STUDENT REGISTRATIONS		STUDENT SEMESTER HRS	
	No.	Pct.	No.	Pct.	No.	Pct.	No.	Pct.	No.	Pct.
TOTAL .....	82	100.0	90	100.0	270	100.0	1,969	100.0	5,887	100.0
HUMANITIES .....	17	20.7	20	22.2	60	22.2	360	18.3	1,080	18.3
English .....	6	7.3	6	6.7	18	6.7	78	4.0	234	4.0
History .....	5	6.1	5	5.6	15	5.6	108	5.5	324	5.5
Humanities .....	4	4.9	7	7.8	21	7.8	144	7.3	432	7.3
Philosophy .....	2	2.4	2	2.2	6	2.2	30	1.5	90	1.5
PROFESS STUDIES .....	29	35.4	31	34.4	93	34.4	705	35.8	2,109	35.8
Business Admin .....	14	17.1	16	17.8	48	17.8	358	18.2	1,072	18.2
Profess Studies .....	3	3.7	3	3.3	9	3.3	63	3.2	189	3.2
Public Admin .....	12	14.6	12	13.3	36	13.3	284	14.4	848	14.4
SOCIAL SCIENCES .....	36	43.9	39	43.3	117	43.3	904	45.9	2,698	45.8
Anthropology .....	5	6.1	5	5.6	15	5.6	91	4.6	271	4.6
Economics .....	3	3.7	4	4.4	12	4.4	89	4.5	267	4.5
Political Science .....	2	2.4	2	2.2	6	2.2	28	1.4	82	1.4
Psychology .....	14	17.1	14	15.6	42	15.6	325	16.5	965	16.4
Social Science .....	6	7.3	8	8.9	24	8.9	209	10.6	627	10.7
Sociology .....	6	7.3	6	6.7	18	6.7	162	8.2	486	8.3

TABLE 2  
 STUDENT SEMESTER HOURS AND COURSE FTE  
 UNIVERSITY OF HAWAI'I - WEST O'AHU  
 FALL 1993 TO FALL 1997

COURSE OFFERING	FALL 1993			FALL 1994			FALL 1995			FALL 1996			FALL 1997		
	SSH	%Chg	FTE	SSH	%Chg	FTE	SSH	%Chg	FTE	SSH	%Chg	FTE	SSH	%Chg	FTE
TOTAL .....	5,878	1.4	390	6,524	11.0	436	6,417	-1.6	428	5,807	-9.5	388	5,887	1.4	393
HUMANITIES .....	922	-11.6	61	1,019	10.5	68	1,236	21.3	83	1,400	13.3	94	1,080	-22.9	73
American Studies .....							24		2						
English .....	180	-22.4	12	187	3.9	12	282	50.8	19	305	8.2	20	234	-23.3	16
History .....	321	17.6	21	319	-0.6	21	282	-11.6	19	324	14.9	22	324	0.0	22
Humanities .....	226	-26.4	15	354	56.6	24	483	36.4	32	612	26.7	41	432	-29.4	29
Philosophy .....	195	-15.6	13	159	-18.5	11	165	3.8	11	159	-3.6	11	90	-43.4	6
PROFESS STUDIES ....	2,217	6.2	147	2,098	-5.4	140	1,815	-13.5	121	1,826	0.6	122	2,109	15.5	141
Business Admin .....	861	0.2	57	1,092	26.8	73	1,155	5.8	77	945	-18.2	63	1,072	13.4	71
Profess Studies .....	456	-11.6	30	312	-31.6	21	135	-56.7	9	301	123.0	20	189	-37.2	13
Public Admin .....	900	26.4	60	694	-22.9	46	525	-24.4	35	580	10.5	39	848	46.2	57
SOCIAL SCIENCES .....	2,739	2.7	182	3,407	24.4	228	3,366	-1.2	224	2,581	-23.3	172	2,698	4.5	179
Anthropology .....	318	-18.5	21	552	73.6	37	282	-48.9	19	297	5.3	20	271	-8.8	18
Economics .....	222	-41.3	15	348	56.8	23	270	-22.4	18	225	-16.7	15	267	18.7	18
Political Science .....	243	24.6	16	279	14.8	19	291	4.3	19	93	-68.0	6	82	-11.8	5
Psychology .....	931	34.7	62	1,179	26.6	79	1,128	-4.3	75	895	-20.7	60	965	7.8	64
Social Science .....	315	-35.2	21	588	86.7	39	642	9.2	43	495	-22.9	33	627	26.7	42
Sociology .....	710	34.5	47	461	-35.1	31	753	63.3	50	576	-23.5	38	486	-15.6	32

TABLE 3  
NUMBER OF CLASSES AND AVERAGE CLASS SIZE  
UNIVERSITY OF HAWAI'I - WEST O'AHU  
FALL 1997

DIVISION AND COURSE OFFERING	NUMBER OF CLASSES	AVERAGE CLASS SIZE
TOTAL .....	90	22
HUMANITIES .....	20	18
English .....	6	13
History .....	5	21
Humanities .....	7	20
Philosophy .....	2	15
PROFESS STUDIES .....	31	23
Business Admin .....	16	22
Profess Studies .....	3	21
Public Admin .....	12	23
SOCIAL SCIENCES .....	39	23
Anthropology .....	5	18
Economics .....	4	22
Political Science .....	2	14
Psychology .....	14	23
Social Science .....	8	25
Sociology .....	6	27

Note: Adjustments are based on recommendations made by the campus.

TABLE 4  
NUMBER OF CLASSES AND AVERAGE CLASS SIZE  
UNIVERSITY OF HAWAI'I - WEST O'AHU  
FALL 1993 TO FALL 1997

COURSE OFFERING	FALL 1993		FALL 1994		FALL 1995		FALL 1996		FALL 1997	
	No. of Classes	Avg Size	No. of Classes	Avg Size	No. of Classes	Avg Size	No. of Classes	Avg Size	No. of Classes	Avg Size
TOTAL .....	82	24	91	24	91	23	90	21	90	22
HUMANITIES .....	16	19	17	20	21	19	24	19	20	18
American Studies .....					1	8				
English .....	4	14	4	14	5	18	6	17	6	13
History .....	5	21	6	18	5	18	6	18	5	21
Humanities .....	4	19	4	29	7	22	9	23	7	20
Philosophy .....	3	22	3	18	3	18	3	18	2	15
PROFESS STUDIES ..	31	24	31	22	26	23	28	21	31	23
Business Admin .....	12	24	17	21	16	24	13	24	16	22
Profess Studies .....	7	22	5	21	2	23	5	20	3	21
Public Admin .....	12	25	9	25	8	22	10	19	12	23
SOCIAL SCIENCES ....	35	26	43	26	44	25	38	23	39	23
Anthropology .....	4	26	7	26	7	13	5	20	5	18
Economics .....	4	19	6	19	5	18	5	15	4	22
Political Science .....	3	27	4	23	5	19	3	10	2	14
Psychology .....	11	28	13	30	11	34	11	27	14	23
Social Science .....	5	21	8	24	8	26	6	28	8	25
Sociology .....	8	30	5	31	8	31	8	24	6	27

Note: Adjustments are based on recommendations made by the campus.