

COURSE REGISTRATION REPORT
UNIVERSITY OF HAWAI'I – WEST O'AHU
SPRING 2008

Institutional Research Office
University of Hawai'i
July 2008

File Reference: Management and Planning Support Folder, Courses

Reports available online at: <http://www.hawaii.edu/iro/maps.htm>

University of Hawai'i - West O'ahu - Spring Semesters

Figure 1
Student Semester Hours (SSH)

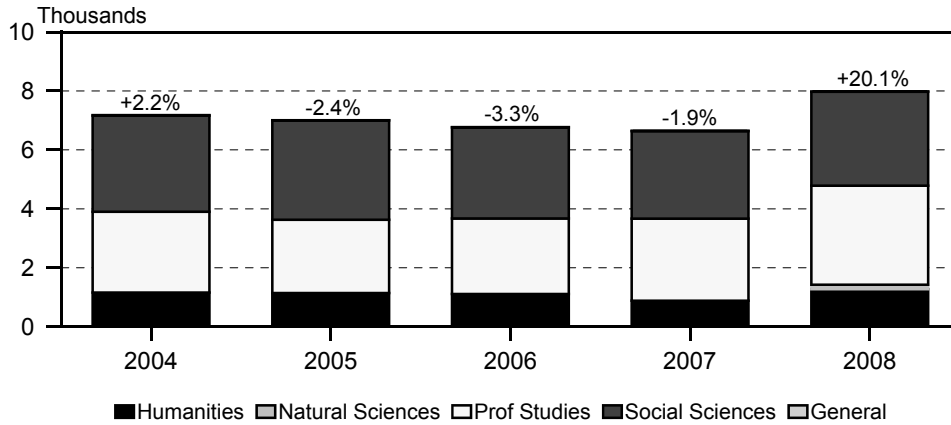


Figure 2
Course FTE

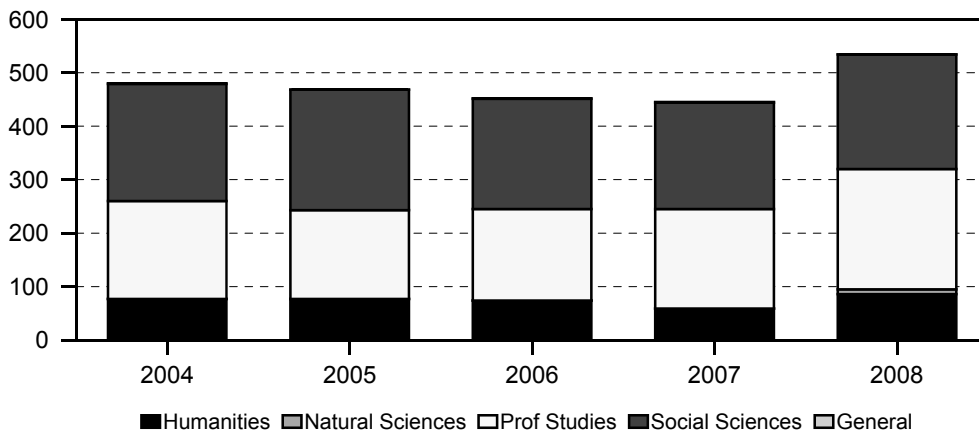
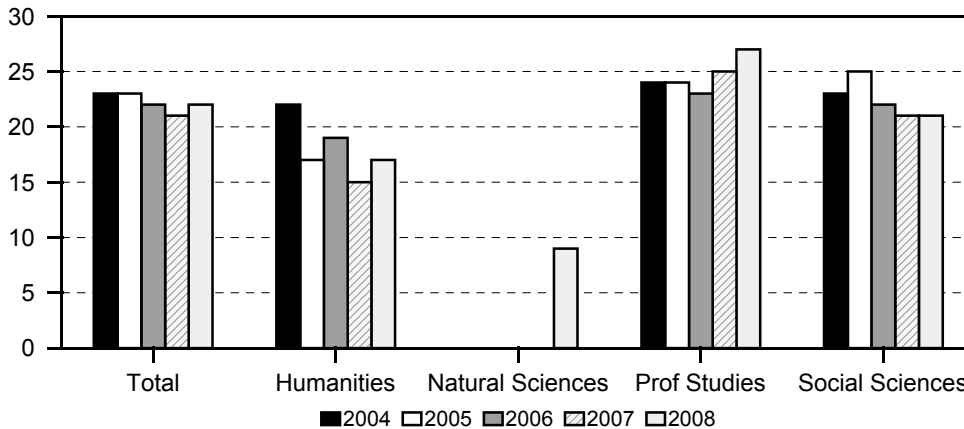


Figure 3
Average Class Size *



* Excludes Aerospace Studies and Military Science courses.

Table 1
Course Registration Summary, By Course Offering
 University of Hawai'i - West O'ahu
 Spring 2008

COURSE OFFERING	COURSES	CLASSES		SEMESTER HOURS	STUDENT REGIS	STUDENT SEM HRS	COURSE FTE
		No.	Avg Size				
TOTAL	112	119	22	345	2,716	7,979	534
Lower Division	14	15	11	40	164	408	28
Upper Division	98	104	23	305	2,552	7,571	506
Humanities	21	24	17	73	424	1,274	86
Lower Division	5	6	10	19	57	173	12
Upper Division	16	18	19	54	367	1,101	74
English	7	8	12	24	100	300	20
Lower Division	2	3	9	9	27	81	5
Upper Division	5	5	14	15	73	219	15
Hawaii-Pacific Studies	3	3	12	9	42	126	8
Hawaiian	1	1	2	4	2	8	1
History	6	6	24	18	144	432	29
Lower Division	1	1	20	3	20	60	4
Upper Division	5	5	25	15	124	372	25
Humanities	2	4	24	12	103	309	21
Philosophy	2	2	16	6	33	99	7
Lower Division	1	1	8	3	8	24	2
Upper Division	1	1	23	3	25	75	5
Natural Sciences	6	6	9	16	52	146	9
Lower Division	4	4	8	10	30	80	5
Upper Division	2	2	11	6	22	66	4
Biology	2	2	9	6	17	51	3
Lower Division	1	1	11	3	11	33	2
Upper Division	1	1	6	3	6	18	1
Chemistry	2	2	5	4	10	20	1
Mathematics	2	2	13	6	25	75	5
Lower Division	1	1	9	3	9	27	2
Upper Division	1	1	16	3	16	48	3
Professional Studies	36	39	27	117	1,125	3,367	225
Business Administration	14	17	29	51	519	1,553	104
Public Administration	22	22	26	66	606	1,814	121
Social Sciences	47	50	21	135	1,113	3,188	214
Lower Division	5	5	15	11	77	155	11
Upper Division	42	45	22	124	1,036	3,033	203
Anthropology	5	5	25	15	125	375	25
Lower Division	1	1	11	3	11	33	2
Upper Division	4	4	29	12	114	342	23
Early Childhood Education	3	3	12	9	37	111	7
Economics	3	3	17	9	52	156	11
Lower Division	1	1	18	3	18	54	4
Upper Division	2	2	17	6	34	102	7
Elementary Education	9	9	15	17	137	276	19
Lower Division	2	2	19	2	38	38	3
Upper Division	7	7	14	15	99	238	16
Political Science	5	5	17	15	83	249	17
Lower Division	1	1	10	3	10	30	2
Upper Division	4	4	18	12	73	219	15
Psychology	13	13	28	34	358	1,060	71
Social Sciences	4	7	26	21	223	669	45
Sociology	5	5	19	15	98	292	19
General	2			4	2	4	

COURSE OFFERING	COURSES	CLASSES		SEMESTER HOURS	STUDENT REGIS	STUDENT SEM HRS	COURSE FTE
		No.	Avg Size				
Aerospace Studies	2			4	2	4	

1/ Number of classes and average class size exclude directed reading and research, practicum, and senior project classes. Also excludes Aerospace Studies and Military Science classes.

2/ General Education and Lower Division Curriculum approved by Board of Regents in November 2006.

SERIES: Course Registration Report

SOURCE: Banner Operational Data Store (ODS), IRO_SOCAD, IRO_SOCEX

University of Hawai'i, Institutional Research Office

Table 2
Student Semester Hours (SSH) and Course FTE
 University of Hawai'i - West O'ahu
 Spring 2005 to Spring 2008

	Spring 2005			Spring 2006			Spring 2007			Spring 2008		
	SSH		COURSE	SSH		COURSE	SSH		COURSE	SSH		COURSE
	No.	%Chg	FTE	No.	%Chg	FTE	No.	%Chg	FTE	No.	%Chg	FTE
TOTAL	7,005		468	6,773	-3	452	6,645	-2	445	7,979	20	534
Lower Division										408		28
Upper Division	7,005		468	6,773	-3	452	6,645	-2	445	7,571	14	506
Humanities	1,144		77	1,110	-3	74	881	-21	59	1,274	45	86
Lower Division										173		12
Upper Division	1,144		77	1,110	-3	74	881	-21	59	1,101	25	74
Natural Sciences										146		9
Lower Division										80		5
Upper Division										66		4
Professional Studies	2,484		166	2,562	3	171	2,783	9	186	3,367	21	225
Upper Division	2,484		166	2,562	3	171	2,783	9	186	3,367	21	225
Social Sciences	3,370		225	3,089	-8	206	2,973	-4	199	3,188	7	214
Lower Division										155		11
Upper Division	3,370		225	3,089	-8	206	2,973	-4	199	3,033	2	203
General	7		< .5	12	71	1	8	-33	1	4	-50	< .5
Upper Division	7		< .5	12	71	1	8	-33	1	4	-50	< .5

1/ Percent change between -.49 and 0 is noted as (<1). Percent change between -.9 and -.5 is rounded to -1.

2/ General Education and Lower Division Curriculum approved by Board of Regents in November 2006.

SERIES: Course Registration Report

SOURCE: Banner Operational Data Store (ODS), IRO_SOCAD

University of Hawai'i, Institutional Research Office

© 2005-2008 University of Hawai'i

Table 3
Number of Classes and Average Class Size
 University of Hawai'i - West O'ahu
 Spring 2005 to Spring 2008

	Spring 2005			Spring 2006			Spring 2007			Spring 2008		
	Classes		Avg	Classes		Avg	Classes		Avg	Classes		Avg
	No.	%Chg	Size	No.	%Chg	Size	No.	%Chg	Size	No.	%Chg	Size
TOTAL	95		23	98	3	22	99	1	21	119	20	22
Lower Division										15		11
Upper Division	95		23	98	3	22	99	1	21	104	5	23
Humanities	21		17	19	-10	19	18	-5	15	24	33	17
Lower Division										6		10
Upper Division	21		17	19	-10	19	18	-5	15	18	0	19
Natural Sciences										6		9
Lower Division										4		8
Upper Division										2		11
Professional Studies	32		24	34	6	23	35	3	25	39	11	27
Upper Division	32		24	34	6	23	35	3	25	39	11	27
Social Sciences	42		25	45	7	22	46	2	21	50	9	21
Lower Division										5		15
Upper Division	42		25	45	7	22	46	2	21	45	-2	22

1/ Excludes directed reading and research, practicum, and senior project classes. Also excludes Aerospace Studies and Military Science classes.

2/ Percent change between - .49 and 0 is noted as (<1). Percent change between - .9 and - .5 is rounded to -1.

3/ General Education and Lower Division Curriculum approved by Board of Regents in November 2006.

SERIES: Course Registration Report

SOURCE: Banner Operational Data Store (ODS), IRO_SOCAD

University of Hawai'i, Institutional Research Office

© 2005-2008 University of Hawai'i