

COURSE REGISTRATION REPORT

UNIVERSITY OF HAWAI'I - WEST O'AHU

SPRING 1999

Institutional Research Office
University of Hawai'i
March 1999

File Reference: Management and Planning Support Folder, Courses

Reports now available online at: <http://www.hawaii.edu/iro/maps.htm>

University of Hawai'i - West O'ahu - Spring Semesters

Figure 1
Student Semester Hours (SSH)

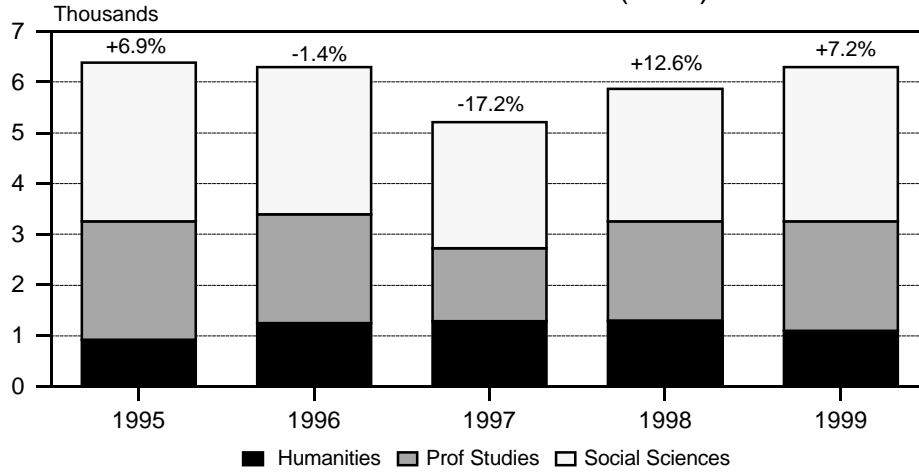


Figure 2
Course FTE

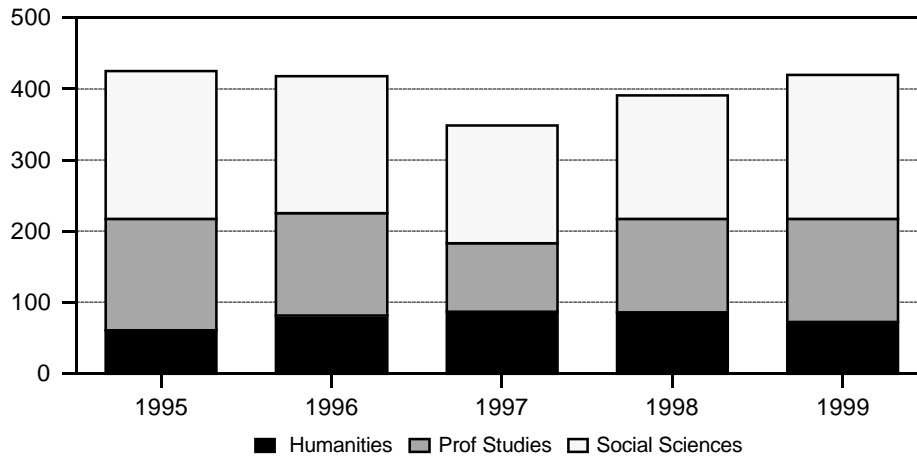


Figure 3
Average Class Size

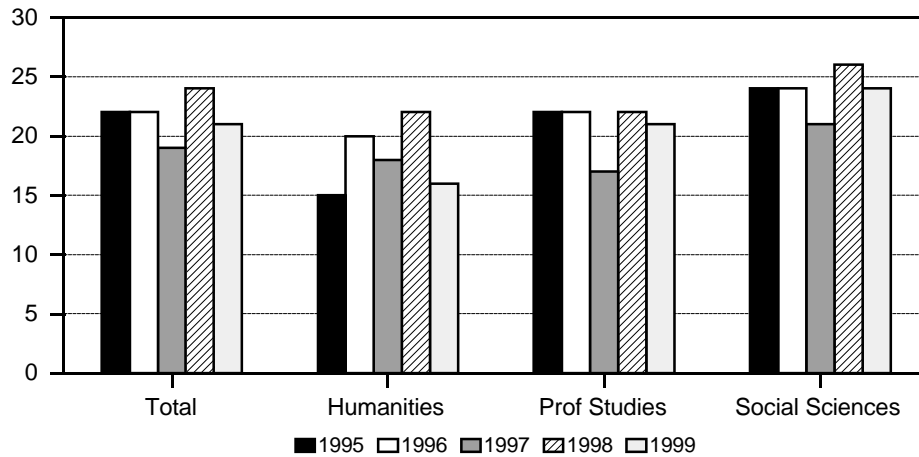


TABLE 1
 COURSE REGISTRATION SUMMARY
 UNIVERSITY OF HAWAI'I - WEST O'AHU
 SPRING 1999

DIVISION AND COURSE OFFERING	COURSES		CLASSES		SEMESTER HOURS		STUDENT REGISTRATIONS		STUDENT SEMESTER HRS	
	No.	Pct.	No.	Pct.	No.	Pct.	No.	Pct.	No.	Pct.
TOTAL	84	100.0	97	100.0	292	100.0	2,095	100.0	6,289	100.0
HUMANITIES	19	22.6	22	22.7	67	22.9	364	17.4	1,097	17.4
Hawaii Pacific Studies 1/.....	2	2.4	2	2.1	6	2.1	15	0.7	45	0.7
History	6	7.1	6	6.2	18	6.2	96	4.6	282	4.5
Humanities	4	4.8	7	7.2	22	7.5	136	6.5	419	6.7
Literature	3	3.6	3	3.1	9	3.1	45	2.1	135	2.1
Philosophy	4	4.8	4	4.1	12	4.1	72	3.4	216	3.4
PROFESS STUDIES	27	32.1	33	34.0	99	33.9	718	34.3	2,157	34.3
Aerospace Science	2	2.4	2	2.1	6	2.1	5	0.2	15	0.2
Business Admin	13	15.5	18	18.6	54	18.5	411	19.6	1,233	19.6
Public Admin	12	14.3	13	13.4	39	13.4	302	14.4	909	14.5
SOCIAL SCIENCES	38	45.2	42	43.3	126	43.2	1,013	48.4	3,035	48.3
Anthropology	6	7.1	6	6.2	18	6.2	140	6.7	420	6.7
Economics	3	3.6	4	4.1	12	4.1	80	3.8	240	3.8
Political Science	3	3.6	3	3.1	9	3.1	50	2.4	150	2.4
Psychology	13	15.5	13	13.4	39	13.4	340	16.2	1,018	16.2
Social Science	6	7.1	9	9.3	27	9.2	223	10.6	669	10.6
Sociology	7	8.3	7	7.2	21	7.2	180	8.6	538	8.6

1/ Added in Spring 1999.

Source: Computer Report 3011: "Course Registration Summary Report".
 Note: Adjustments are based on recommendations made by the campus.

TABLE 2
STUDENT SEMESTER HOURS AND COURSE FTE
UNIVERSITY OF HAWAI'I - WEST O'AHU
SPRING 1995 TO SPRING 1999

COURSE OFFERING	SPRING 1995		SPRING 1996		SPRING 1997		SPRING 1998		SPRING 1999	
	SSH	FTE	SSH	FTE	SSH	FTE	SSH	FTE	SSH	FTE
TOTAL	6,376	425	6,288	418	5,208	349	5,864	391	6,289	420
HUMANITIES	920	61	1,245	82	1,282	87	1,302	86	1,097	73
American Studies			3		24	2				
English	246	16	317	21	267	18				
Hawaii Pacific Studies 1/.....									45	3
History	317	21	337	22	339	23	228	15	282	19
Humanities	249	17	438	29	460	31	407	27	419	28
Literature							442	29	135	9
Philosophy	108	7	150	10	192	13	225	15	216	14
PROFESS STUDIES	2,333	156	2,152	143	1,444	96	1,960	131	2,157	144
Aerospace Science							3		15	1
Business Admin	1,014	68	1,014	68	685	46	973	65	1,233	82
Profess Studies	328	22	186	12	216	14	252	17		
Public Admin	991	66	952	63	543	36	732	49	909	61
SOCIAL SCIENCES	3,123	208	2,891	193	2,482	166	2,602	174	3,035	203
Anthropology	388	26	342	23	252	17	375	25	420	28
Economics	303	20	298	20	289	19	183	12	240	16
Political Science	160	11	267	18	84	6	75	5	150	10
Psychology	1,120	75	996	66	817	54	974	65	1,018	68
Social Science	516	34	529	35	534	36	534	36	669	45
Sociology	636	42	459	31	506	34	461	31	538	36

1/ Added in Spring 1999.

TABLE 3
NUMBER OF CLASSES AND AVERAGE CLASS SIZE 1/
UNIVERSITY OF HAWAI'I - WEST O'AHU
SPRING 1995 TO SPRING 1999

COURSE OFFERING	SPRING 1995		SPRING 1996		SPRING 1997		SPRING 1998		SPRING 1999	
	No. of Classes	Avg Size	No. of Classes	Avg Size	No. of Classes	Avg Size	No. of Classes	Avg Size	No. of Classes	Avg Size
TOTAL	96	22	92	22	90	19	82	24	97	21
HUMANITIES	19	15	20	20	23	18	19	22	22	16
American Studies					1	8				
English	6	12	6	18	5	16				
Hawaii Pacific Studies 2/.....									2	8
History	6	17	5	22	6	18	4	19	6	15
Humanities	4	20	6	24	7	21	6	22	7	19
Literature							5	29	3	14
Philosophy	3	12	3	16	4	16	4	19	4	18
PROFESS STUDIES	34	22	32	22	28	17	30	22	33	21
Aerospace Science							1	1	2	3
Business Admin	16	21	16	21	13	17	13	25	18	23
Profess Studies	5	20	3	16	5	14	5	17		
Public Admin	13	25	13	24	10	18	11	22	13	22
SOCIAL SCIENCES	43	24	40	24	39	21	33	26	42	24
Anthropology	7	18	5	22	5	16	5	25	6	23
Economics	5	20	6	16	5	19	2	28	4	20
Political Science	3	17	4	22	3	9	2	13	3	16
Psychology	12	31	11	30	10	27	11	29	13	26
Social Science	6	29	7	25	9	20	6	30	9	24
Sociology	10	21	7	21	7	24	7	22	7	25

1/ Excludes 99 (Individual Instruction), 700 (Thesis Research) and 800 (Dissertation Research) courses.

2/ Added in Spring 1999.

Source: Computer Report 3011C: "Number of Classes and Average Class Size".

Note: Adjustments are based on recommendations made by the campus.