

**DEGREES AND CERTIFICATES EARNED**  
**UNIVERSITY OF HAWAI'I**  
**FISCAL YEAR 2005-06**

Institutional Research Office

University of Hawai'i

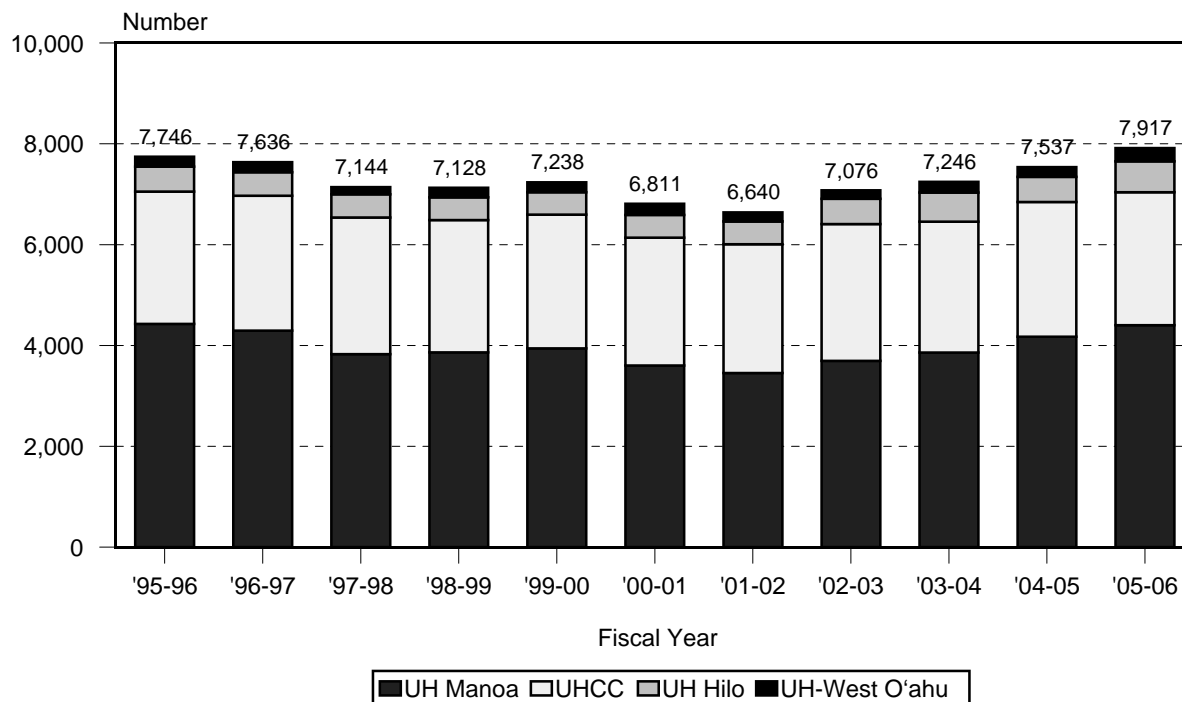
December 2006

File Reference: Management and Planning Support Folder, Students

Reports available online at: <http://www.hawaii.edu/iro/maps.htm>

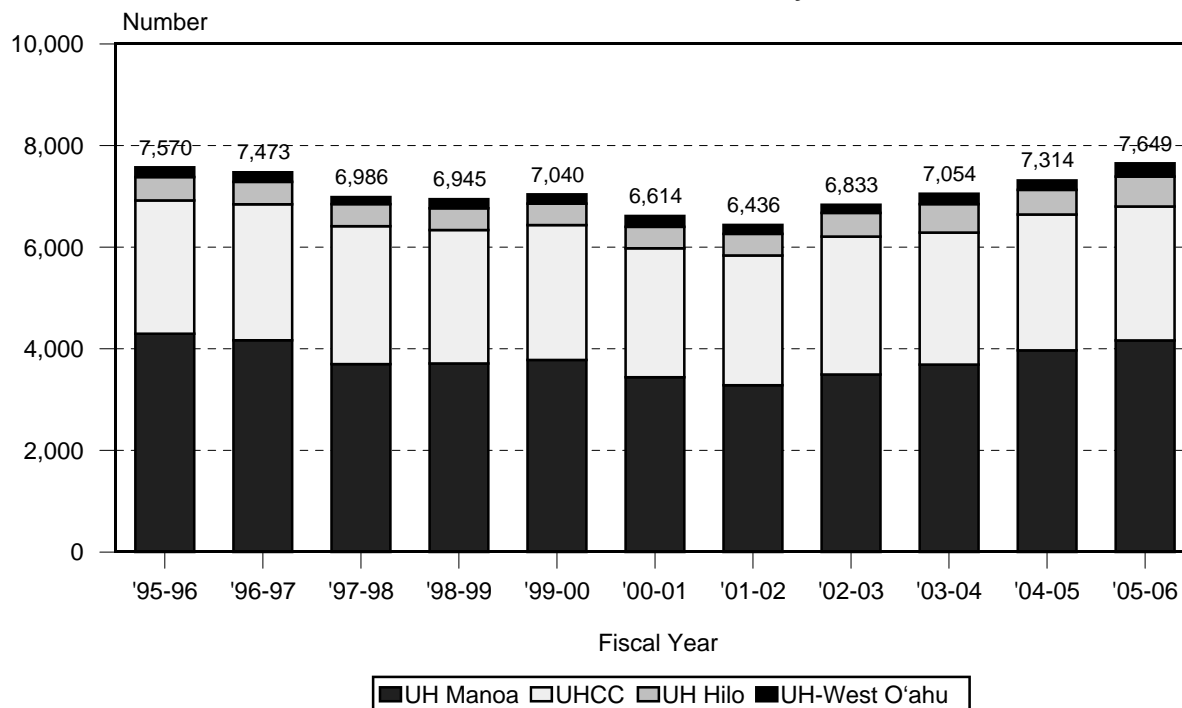
# University of Hawai'i System

## Figure 1 Degrees and Certificates Earned By UH Unit



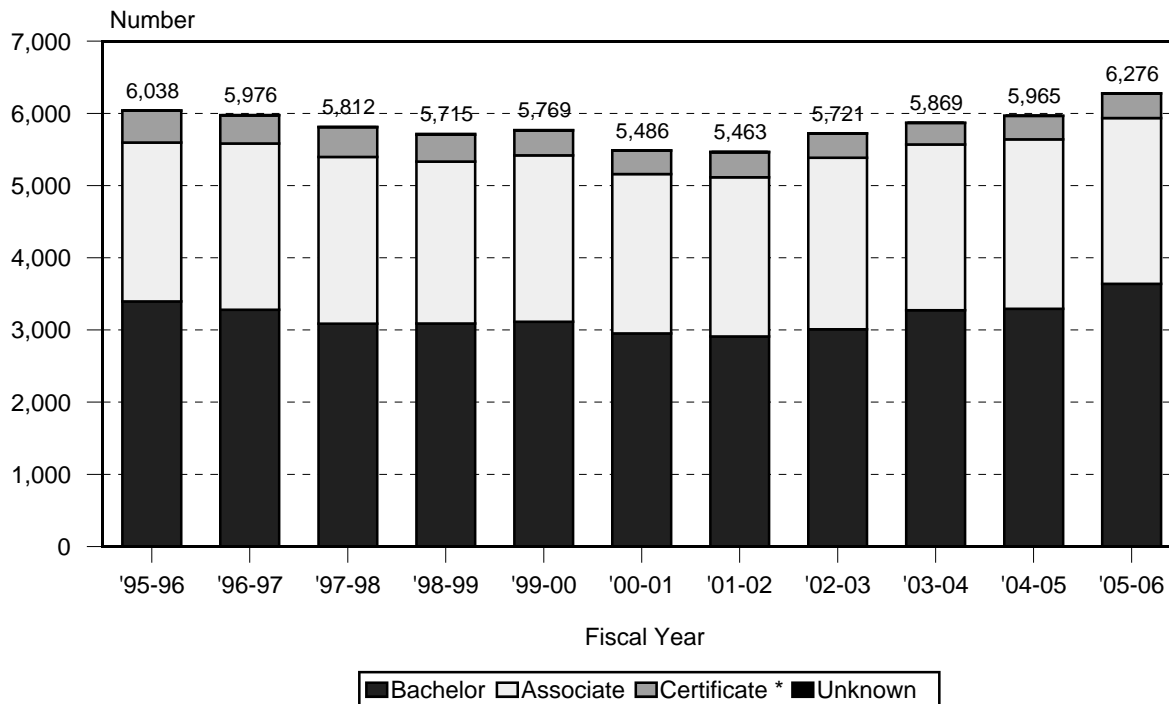
Students receiving more than one degree / certificate at a campus may be multiple counted.

## Figure 2 Headcount of Graduates By UH Unit



Students receiving more than one degree / certificate at a campus are counted only once. However, students receiving degrees / certificates at more than one campus may be multiple counted.

Figure 3  
Undergraduate Degrees Earned by Type of Degree



Includes the Certificate of Achievement and Advanced Professional Certificate at the UH Community Colleges and the Certificate in Dental Hygiene at UH Manoa (through FY1998 only).

Figure 4  
Graduate Degrees Earned By Type of Degree

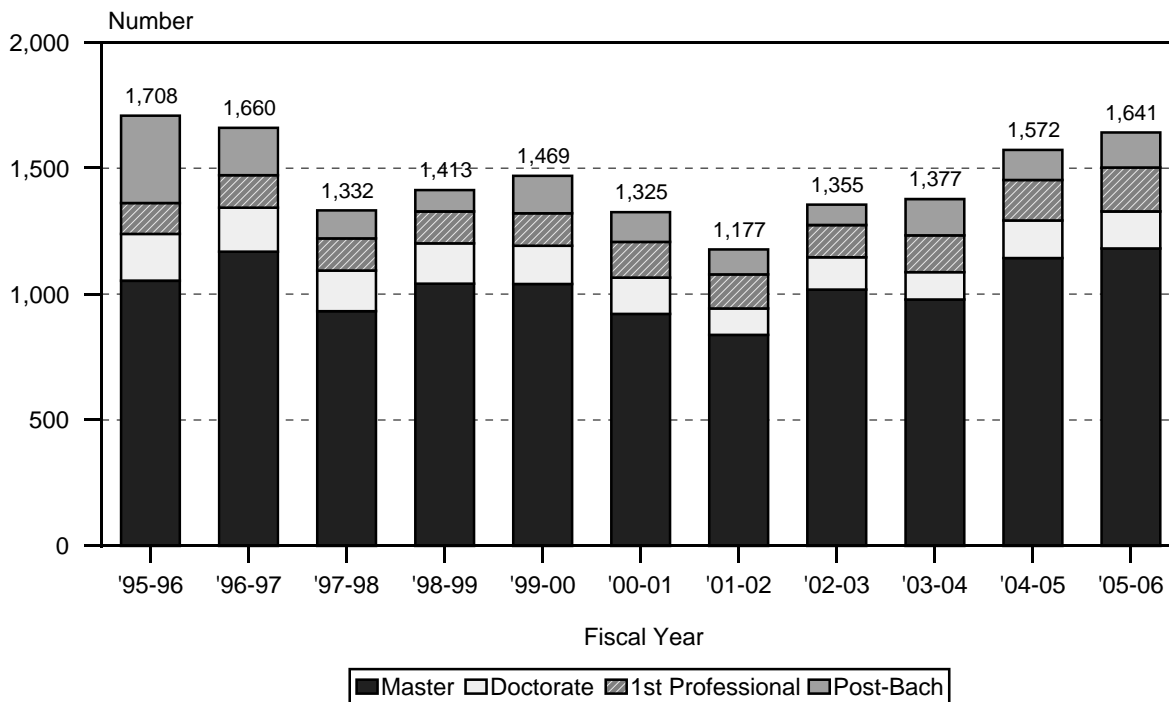


Figure 5  
Degrees Earned By Gender

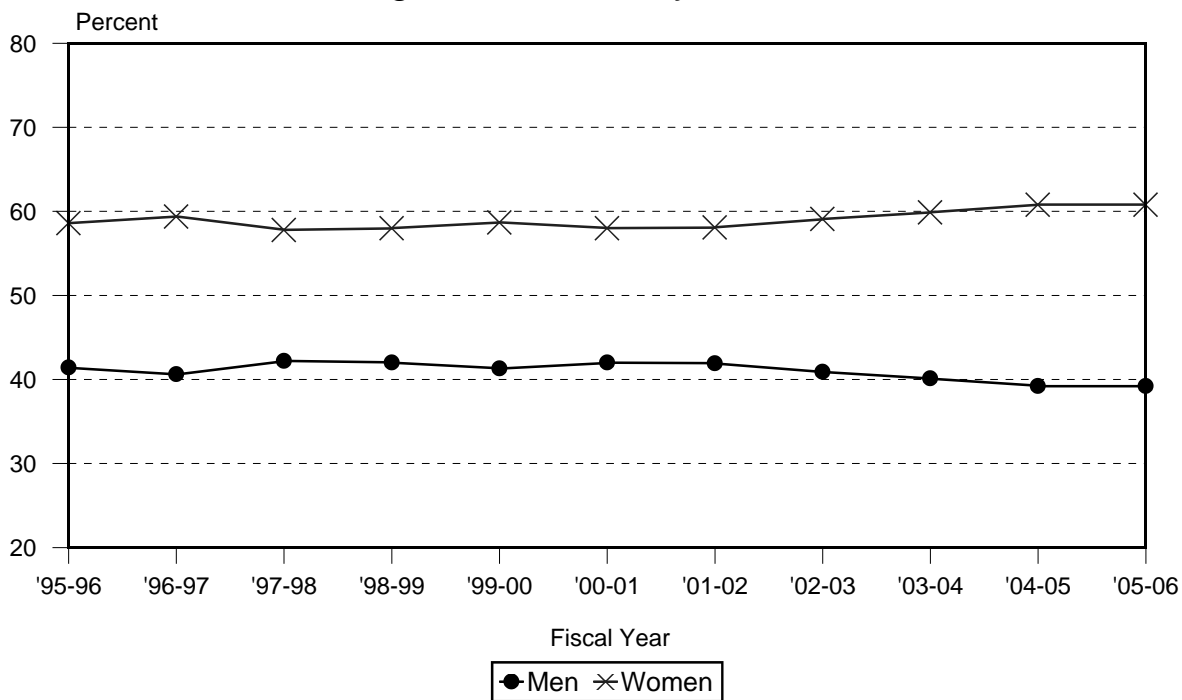


Figure 6  
Degrees Earned By Ethnicity

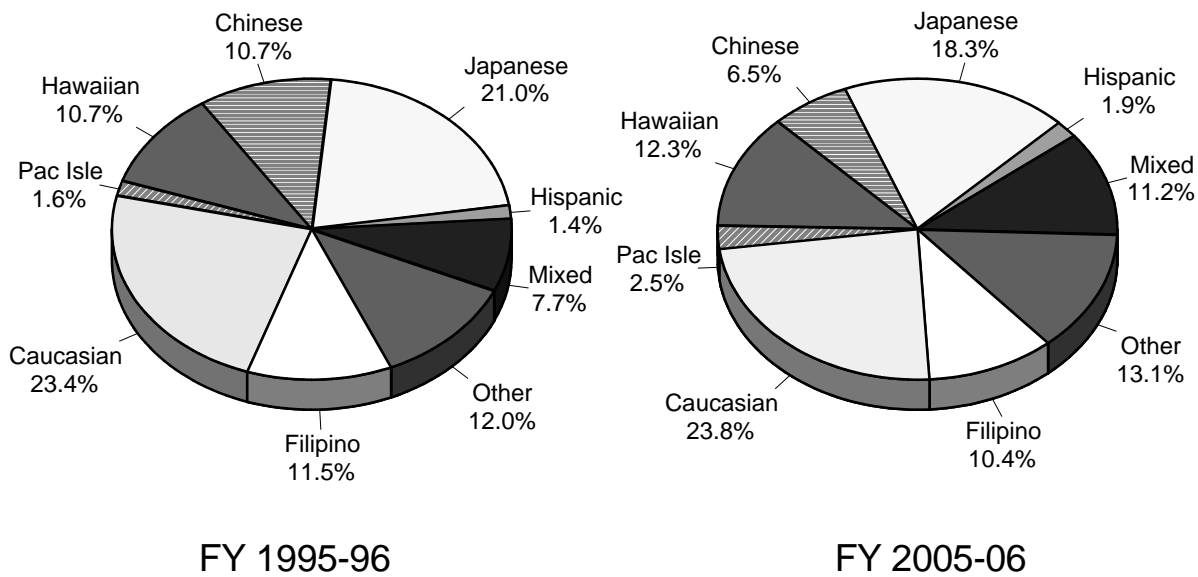


TABLE 1  
DEGREES, DIPLOMAS AND CERTIFICATES EARNED  
UNIVERSITY OF HAWAII  
FISCAL YEARS (July 1 to June 30) 1995-96 TO 2005-06

	1995-96	1996-97	1997-98	1998-99	1999-00	2000-01	2001-02	2002-03	2003-04	2004-05	2005-06
TOTAL DEGREES .....	7,746	7,636	7,144	7,128	7,238	6,811	6,640	7,076	7,246	7,537	7,917
Percent Change .....	2.9	-1.4	-6.4	-0.2	1.5	-5.9	-2.5	6.6	2.4	4.0	5.0
Certificates (CA,Dent Hyg) 1/ .....	442	393	412	371	348	325	349	336	300	324	340
Associate Degrees (AA,AAS,AS,ATS) .....	2,201	2,304	2,310	2,244	2,302	2,209	2,204	2,375	2,296	2,346	2,295
Advanced Prof Certificate (APC) 2/ .....										1	2
Bachelor's Degrees (BA,BS,etc) .....	3,395	3,279	3,086	3,089	3,115	2,951	2,910	3,010	3,273	3,294	3,639
Post Bach (PD, PB, Cert in Ed) 3/ .....	347	188	111	85	148	118	99	81	144	119	139
Master's Degrees (MA,MS,etc) .....	1,053	1,168	932	1,041	1,040	921	838	1,018	978	1,143	1,181
Doctor's Degrees (PhD,EdD,DrPH) .....	186	175	161	160	152	144	105	128	109	149	147
First Professional (JD,MD, ArchD) .....	122	129	128	127	129	142	135	128	146	161	174
No Data .....			4	11	4	1					
UH AT MANOA .....	4,428	4,295	3,830	3,863	3,942	3,603	3,454	3,696	3,859	4,175	4,401
Percent Change .....	3.5	-3.0	-10.8	0.9	2.0	-8.6	-4.1	7.0	4.4	8.2	5.4
Cert in Dental Hygiene 1/ .....	20	21	16								
Bachelor's Degrees .....	2,782	2,659	2,528	2,481	2,508	2,311	2,326	2,393	2,543	2,647	2,837
BA .....	1,218	1,195	1,156	1,134	1,170	983	1,020	1,061	1,116	1,258	1,308
BA (Arts & Sciences) .....	1,162	1,139	1,085	1,070	1,099	936	977	1,030	1,077	1,217	1,262
BA (Hawn Asn Pac Stud) .....	56	56	70	64	68	45	43	30	39	39	43
BA (Ocn Erth Sci Tech) .....			1		3	2		1		2	3
BArch 4/ .....	33	47	44	34	49	20	43	22	13	10	
BBA .....	590	515	477	493	501	514	481	490	475	496	566
BEd .....	273	216	185	208	191	179	169	195	253	178	244
BFA .....	42	35	47	48	55	33	33	45	55	42	52
BMus .....	2	4	4	3	2	7	3	5	3	2	2

TABLE 1 (cont.)

	1995-96	1996-97	1997-98	1998-99	1999-00	2000-01	2001-02	2002-03	2003-04	2004-05	2005-06
BS .....	604	615	587	536	522	557	556	562	609	645	662
BS (Agriculture) .....	110	145	128	154	131	176	143	133	127	143	161
BS (Arts & Sciences) .....	98	73	98	83	104	88	99	123	115	139	112
BS (Education) .....	13	19	25	19	16	18	16	20	19	16	21
BS (Engineering) .....	147	152	116	104	99	84	91	79	106	89	118
BS (Medicine) .....	24	32	25	19	20	21	32	29	26	19	23
BS (Nursing & Dental Hyg) .....	92	83	83	66	58	82	82	90	100	105	112
BS (Ocn Erth Sci Tech) .....	10	15	13	9	14	11	12	15	26	30	14
BS (Travel Ind Mgt) .....	110	96	99	82	80	77	81	73	90	104	101
BSW .....	20	32	28	25	18	18	21	13	19	16	3
Post-Baccalaureate (PD, PB, PDE) 3/ ....	265	143	65	54	112	85	51	45	96	78	80
Master's Degrees .....	1,053	1,168	932	1,041	1,040	921	837	1,002	965	1,140	1,163
LLM 5/ .....									4	6	5
MA .....	225	221	229	231	211	188	185	224	183	217	255
MA (Arts & Sciences) .....	204	194	208	209	178	165	158	201	159	181	222
MA (Hawn Asn Pac Stud) .....	21	27	21	22	33	23	27	23	24	36	33
MAcc .....	19	10	12	10	12	20	16	32	52	51	44
MArch 4/ .....	4	3	5	5	6	6	6	3			
MBA .....	136	185	82	145	112	144	123	177	161	149	158
MEd .....	130	167	134	187	206	166	157	185	147	197	221
MEdT .....	20	29	8	23	18	21	19	25	16	16	36
MFA .....	21	17	19	19	17	19	16	14	14	22	15
MHRM 6/ .....										27	24
MLIS / MLISC 7/ .....	50	51	39	43	31	34	34	38	51	49	49
MMus .....	5	3	4	3		3	1	2	1	1	5
MPA .....	10	23	23	18	18	14	18	11	27	26	19
MPH .....	129	92	79	76	108	19	3	12	8	16	16
MPS 8/ .....	7	6	4	4							
MS .....	204	211	202	176	197	190	167	186	206	240	231
MS (Agriculture) .....	33	31	26	15	16	23	20	19	19	25	30
MS (Arts & Sciences) .....	34	42	41	48	47	48	41	28	57	47	57
MS (Education) 9/.....						3	18	14	19	22	8
MS (Engineering) .....	53	49	57	34	43	42	21	26	22	50	36
MS (Medicine) 10/ .....	30	23	35	35	45	20	38	49	44	30	38
MS (Nursing & Dental Hyg) .....	38	41	21	23	23	23	6	18	15	36	21
MS (Ocn Erth Sci Tech) .....	16	25	22	21	15	22	18	22	23	23	26
MS (Travel Ind Mgt) 8/ .....					8	9	5	10	7	7	15
MSW .....	82	136	79	89	96	86	81	82	84	107	73
MURP .....	11	14	13	12	8	11	11	11	11	16	12

TABLE 1 (cont.)

	1995-96	1996-97	1997-98	1998-99	1999-00	2000-01	2001-02	2002-03	2003-04	2004-05	2005-06
Doctor's Degrees .....	186	175	161	160	152	144	105	128	109	149	147
DrPH .....	8	7	3	6	8	3	1	1			
EdD 11/ .....	10	7	4	5							
PhD .....	168	161	154	149	144	141	104	127	109	149	147
First Professional Degrees .....	122	129	128	127	129	142	135	128	146	161	174
ArchD (Architecture) 12/ .....					1	10	5	3	4	7	9
JD (Law) .....	73	75	71	70	75	79	77	72	76	98	101
MD (Medicine) .....	49	54	57	57	53	53	53	53	66	56	64
No Data .....					1						
UH AT HILO .....	496	466	457	450	447	452	454	502	579	497	614
Percent Change .....	12.7	-6.0	-1.9	-1.5	-0.7	1.1	0.4	10.6	15.3	-14.2	23.5
Bachelor's Degrees .....	414	421	411	419	411	419	405	450	518	453	537
BA .....	298	306	320	321	313	335	305	340	394	338	397
BA (Arts & Sciences) .....	279	283	304	302	299	314	283	317	371	316	375
BA (Business & Economics) 13/ .....	13	8	5	11	9	6	13	8	10	11	9
BA (Ka Haka 'Ula O Ke'elikolani) .....	6	15	11	8	5	15	9	15	13	11	13
BBA .....	58	66	44	54	48	41	38	54	49	42	53
BS .....	58	49	47	44	50	43	62	56	75	73	87
BS (Agriculture) .....	25	23	20	18	22	23	27	18	25	26	25
BS (Arts & Sciences) .....	33	26	27	26	28	20	35	38	50	47	62
Certificates in Education .....	82	45	46	31	36	33	48	36	48	41	59
Arts & Science .....	82	45	46	31	36	33	48	36	37	40	46
Ka Haka 'Ula O Ke'elikolani 14/ .....									11	1	13
Master's Degree .....							1	16	13	3	18
MA (Ka Haka 'Ula O Ke'elikolani) 15/ ..							1	1	2		4
MEd 16/ .....								15	11	3	14
UH-WEST O'AHU (BA) .....	199	199	147	189	196	221	179	167	212	194	265
Percent Change .....	7.0	0.0	-26.1	28.6	3.7	12.8	-19.0	-6.7	26.9	-8.5	36.6

TABLE 1 (cont.)

	1995-96	1996-97	1997-98	1998-99	1999-00	2000-01	2001-02	2002-03	2003-04	2004-05	2005-06
COMMUNITY COLLEGES .....	2,623	2,676	2,710	2,626	2,653	2,535	2,553	2,711	2,596	2,671	2,637
Percent Change .....	0.0	2.0	1.3	-3.1	1.0	-4.4	0.7	6.2	-4.2	2.9	-1.3
Certificates of Achievement .....	422	372	396	371	348	325	349	336	300	324	340
Associate Degrees .....	2,201	2,304	2,310	2,244	2,302	2,209	2,204	2,375	2,296	2,346	2,295
AA .....	984	1,083	1,085	1,129	1,092	975	1,055	1,104	1,137	1,155	1,127
AA (Liberal Arts) .....	983	1,083	1,085	1,129	1,092	975	1,055	1,104	1,137	1,155	1,127
AA (Industrial Educ) 17/ .....	1										
AAS, AS, ATS .....	1,217	1,221	1,225	1,115	1,210	1,234	1,149	1,271	1,159	1,191	1,168
Advanced Prof Certificate 2/ .....										1	2
No Data .....			4	11	3	1					
HAWAI'I COMMUNITY COLLEGE .....	400	417	394	402	313	321	293	308	317	315	339
Percent Change .....	12.4	4.3	-5.5	2.0	-22.1	2.6	-8.7	5.1	2.9	-0.6	7.6
Certificates of Achievement .....	69	62	79	86	52	59	50	71	47	60	67
Associate Degrees .....	331	355	315	315	261	261	243	237	270	255	272
AA (Liberal Arts) .....	69	129	116	108	83	102	95	64	100	110	106
AAS, AS .....	262	226	199	207	178	159	148	173	170	145	166
No Data .....				1		1					
HONOLULU COMMUNITY COLLEGE .....	546	489	519	444	550	600	469	687	570	561	515
Percent Change .....	7.7	-10.4	6.1	-14.5	23.9	9.1	-21.8	46.5	-17.0	-1.6	-8.2
Certificates of Achievement .....	92	69	82	71	95	71	73	51	46	31	46
Associate Degrees .....	454	420	434	363	452	529	396	636	524	529	467
AA .....	123	123	113	114	105	116	84	107	121	112	93
AA (Liberal Arts) .....	122	123	113	114	105	116	84	107	121	112	93
AA (Industrial Educ) 17/ .....	1										
AAS, AS .....	331	297	321	249	347	413	312	529	403	417	374
Advanced Prof Certificate 2/ .....										1	2
No Data .....			3	10	3						





TABLE 1 (cont.)

	1995-96	1996-97	1997-98	1998-99	1999-00	2000-01	2001-02	2002-03	2003-04	2004-05	2005-06
WINDWARD COMMUNITY COLLEGE .....	138	111	120	118	115	131	138	133	129	111	135
Percent Change .....	-2.8	-19.6	8.1	-1.7	-2.5	13.9	5.3	-3.6	-3.0	-14.0	21.6
Certificates of Achievement .....	6	3	6	3			1			1	1
Associate Degrees .....	132	108	114	115	115	131	137	133	129	110	134
AA (Liberal Arts) .....	129	103	107	110	112	131	137	133	129	109	134
AAS, AS .....	3	5	7	5	3					1	

- 1/ Undergraduate certificate in Dental Hygiene stopped-out in May 1996; terminated in Spring 1998.
- 2/ Third year Advanced Professional Certificate, approved by the UH Board of Regents in July 2003, effective Spring 2004.
- 3/ Manoa's Professional Diploma program stopped-out, AY 1994-95 to 1996-97. Program redesigned and renamed Professional Diploma in Education. Post Baccalaureate credential created in Fall 1996. Data shown here may include both PBs and PDs for the years after Fall 1996. Includes Certificates in Education and Post-Bach in Indigenous Education at UH Hilo.
- 4/ BArch and MArch degrees replaced by the Architecture Doctorate (ArchD) program in July 1999. The ArchD is a first professional degree; students may exit with a BA in Interdisciplinary studies.
- 5/ Master in Law (LLM) for Foreign Professionals added in Fall 2003.
- 6/ Masters in Human Resources Management approved by the Board of Regents, effective Spring 2001.
- 7/ Degree name changed from "Library and Info Studies" (MLIS) to "Library and Info Science" (MLISC), effective Spring 1998.
- 8/ Travel Industry Management masters changed from MPS degree to MS degree, effective Spring 1999.
- 9/ MS in Kinesiology and Leisure Science (College of Education) added, Fall 1999.
- 10/ The School of Public Health merged with the School of Medicine, effective Fall 2000. Data for prior years have been adjusted.
- 11/ EdD degree changed to PhD, effective February 1999.
- 12/ Architecture doctorate (ArchD) added July 1999.
- 13/ UH Hilo College of Business and Economics established in January 2004. Data for Business, Economics, and College of Arts & Sciences have been adjusted to reflect removal of Business and Economics from Arts & Sciences into its own college.
- 14/ Post-baccalaureate certificate in Kahuawaiola Indigenous Teacher Education established in January 2003.
- 15/ MA in Hawaiian Language and Literature added in Fall 1997.
- 16/ MEd in Education added in Fall 2000.
- 17/ Industrial Education was changed from an AA to an AAS in Fall 1996.

SOURCES: UH Manoa Admissions & Records Office and Manoa Graduate Division; UH Hilo Registrar's Office; UH West O'ahu Student Services; UH Community Colleges Registrars Offices; Computer Reports 3013H and 2527. FY 2002-03 data from Student Information Management System (SIMS). FY 2003-04 data from Student Information Management System (SIMS) and Banner Operational Data Store (ODS). FY 2004-05 data from Banner Operational Data Store (ODS) Iro\_Degree.

TABLE 2  
DEGREES, DIPLOMAS AND CERTIFICATES EARNED  
BY PERCENTAGE OF TOTAL DEGREES  
UNIVERSITY OF HAWAI'I  
FISCAL YEARS (July 1 to June 30) 1995-96 TO 2005-06

	1995-96	1996-97	1997-98	1998-99	1999-00	2000-01	2001-02	2002-03	2003-04	2004-05	2005-06
TOTAL DEGREES .....	7,746	7,636	7,144	7,128	7,238	6,811	6,640	7,076	7,246	7,537	7,917
Percent Change .....	2.9	-1.4	-6.4	-0.2	1.5	-5.9	-2.5	6.6	2.4	4.0	5.0
Percent of Total .....	100.0	100.0	100.0	100.0	100.0	100.0	100.0	100.0	100.0	100.0	100.0
Certificates (CA,Dental Hygiene) 1/ .....	5.7	5.1	5.8	5.2	4.8	4.8	5.3	4.7	4.1	4.3	4.3
Associate Degrees (AA,AAS,AS,ATS) .....	28.4	30.2	32.3	31.5	31.8	32.4	33.2	33.6	31.7	31.1	29.0
Advanced Prof Certificate (APC) 2/ .....										<0.1	<0.1
Bachelor's Degrees (BA,BS,etc) .....	43.8	42.9	43.2	43.3	43.0	43.3	43.8	42.5	45.2	43.7	46.0
Post Bach (PD, PB, Cert in Ed) 3/ .....	4.5	2.5	1.6	1.2	2.0	1.7	1.5	1.1	2.0	1.6	1.8
Master's Degrees (MA,MS,etc) .....	13.6	15.3	13.0	14.6	14.4	13.5	12.6	14.4	13.5	15.2	14.9
Doctor's Degrees (PhD,EdD,DrPH) .....	2.4	2.3	2.3	2.2	2.1	2.1	1.6	1.8	1.5	2.0	1.9
First Professional (JD,MD, ArchD) .....	1.6	1.7	1.8	1.8	1.8	2.1	2.0	1.8	2.0	2.1	2.2
No Data .....			0.1	0.2	0.1	<0.1					
UH AT MANOA .....	4,428	4,295	3,830	3,863	3,942	3,603	3,454	3,696	3,859	4,175	4,401
Percent of Total .....	100.0	100.0	100.0	100.0	100.0	100.0	100.0	100.0	100.0	100.0	100.0
Percent Change .....	3.5	-3.0	-10.8	0.9	2.0	-8.6	-4.1	7.0	4.4	8.2	5.4
Cert in Dental Hygiene 1/ .....	0.5	0.5	0.4								
Bachelor's Degrees .....	62.8	61.9	66.0	64.2	63.6	64.1	67.3	64.7	65.9	63.4	64.5
BA .....	27.5	27.8	30.2	29.4	29.7	27.3	29.5	28.7	28.9	30.1	29.7
BA (Arts & Sciences) .....	26.2	26.5	28.3	27.7	27.9	26.0	28.3	27.9	27.9	29.2	28.7
BA (Hawn Asn Pac Stud).....	1.3	1.3	1.8	1.7	1.7	1.2	1.2	0.8	1.0	0.9	1.0
BA (Ocn Erth Sci Tech).....			<0.1		0.1	0.1		<0.1		<0.1	<0.1
BArch 4/ .....	0.7	1.1	1.1	0.9	1.2	0.6	1.2	0.6	0.3	0.2	
BBA .....	13.3	12.0	12.5	12.8	12.7	14.3	13.9	13.3	12.3	11.9	12.9
BEd .....	6.2	5.0	4.8	5.4	4.8	5.0	4.9	5.3	6.6	4.3	5.5
BFA .....	0.9	0.8	1.2	1.2	1.4	0.9	1.0	1.2	1.4	1.0	1.2
BMus .....	<0.1	0.1	0.1	0.1	0.1	0.2	0.1	0.1	0.1	<0.1	<0.1

TABLE 2 (cont.)

	1995-96	1996-97	1997-98	1998-99	1999-00	2000-01	2001-02	2002-03	2003-04	2004-05	2005-06
BS .....	13.6	14.3	15.3	13.9	13.2	15.5	16.1	15.2	15.8	15.4	15.0
BS (Agriculture) .....	2.5	3.4	3.3	4.0	3.3	4.9	4.1	3.6	3.3	3.4	3.7
BS (Arts & Sciences) .....	2.2	1.7	2.6	2.1	2.6	2.4	2.9	3.3	3.0	3.3	2.5
BS (Education) .....	0.3	0.4	0.7	0.5	0.4	0.5	0.5	0.5	0.5	0.4	0.5
BS (Engineering) .....	3.3	3.5	3.0	2.7	2.5	2.3	2.6	2.1	2.7	2.1	2.7
BS (Medicine) .....	0.5	0.7	0.7	0.5	0.5	0.6	0.9	0.8	0.7	0.5	0.5
BS (Nursing & Dental Hyg) .....	2.1	1.9	2.2	1.7	1.5	2.3	2.4	2.4	2.6	2.5	2.5
BS (Ocn Erth Sci Tech).....	0.2	0.3	0.3	0.2	0.4	0.3	0.3	0.4	0.7	0.7	0.3
BS (Travel Ind Mgt).....	2.5	2.2	2.6	2.1	2.0	2.1	2.3	2.0	2.3	2.5	2.3
BSW .....	0.5	0.7	0.7	0.6	0.5	0.5	0.6	0.4	0.5	0.4	0.1
Post-Baccalaureate (PD, PB, PDE) 3/ ....	6.0	3.3	1.7	1.4	2.8	2.4	1.5	1.2	2.5	1.9	1.8
Master's Degrees .....	23.8	27.2	24.3	26.9	26.4	25.6	24.2	27.1	25.0	27.3	26.4
LLM 5/ .....									0.1	0.1	0.1
MA .....	5.1	5.1	6.0	6.0	5.4	5.2	5.4	6.1	4.7	5.2	5.8
MA (Arts & Sciences) .....	4.6	4.5	5.4	5.4	4.5	4.6	4.6	5.4	4.1	4.3	5.0
MA (Hawn Asn Pac Stud).....	0.5	0.6	0.5	0.6	0.8	0.6	0.8	0.6	0.6	0.9	0.8
MAcc .....	0.4	0.2	0.3	0.3	0.3	0.6	0.5	0.9	1.3	1.2	1.0
MArch 4/ .....	0.1	0.1	0.1	0.1	0.2	0.2	0.2	0.1			
MBA .....	3.1	4.3	2.1	3.8	2.8	4.0	3.6	4.8	4.2	3.6	3.6
MEd .....	2.9	3.9	3.5	4.8	5.2	4.6	4.5	5.0	3.8	4.7	5.0
MEdT .....	0.5	0.7	0.2	0.6	0.5	0.6	0.6	0.7	0.4	0.4	0.8
MFA .....	0.5	0.4	0.5	0.5	0.4	0.5	0.5	0.4	0.4	0.5	0.3
MHRM 6/ .....										0.6	0.5
MLIS / MLISC 7/ .....	1.1	1.2	1.0	1.1	0.8	0.9	1.0	1.0	1.3	1.2	1.1
MMus .....	0.1	0.1	0.1	0.1		0.1	<0.1	0.1	<0.1	<0.1	0.1
MPA .....	0.2	0.5	0.6	0.5	0.5	0.4	0.5	0.3	0.7	0.6	0.4
MPH .....	2.9	2.1	2.1	2.0	2.7	0.5	0.1	0.3	0.2	0.4	0.4
MPS 8/ .....	0.2	0.1	0.1	0.1							
MS .....	4.6	4.9	5.3	4.6	5.0	5.3	4.8	5.0	5.3	5.7	5.2
MS (Agriculture) .....	0.7	0.7	0.7	0.4	0.4	0.6	0.6	0.5	0.5	0.6	0.7
MS (Arts & Sciences) .....	0.8	1.0	1.1	1.2	1.2	1.3	1.2	0.8	1.5	1.1	1.3
MS (Education) 9/.....						0.1	0.5	0.4	0.5	0.5	0.2
MS (Engineering) .....	1.2	1.1	1.5	0.9	1.1	1.2	0.6	0.7	0.6	1.2	0.8
MS (Medicine) .....	0.7	0.5	0.9	0.9	1.1	0.6	1.1	1.3	1.1	0.7	0.9
MS (Nursing & Dental Hyg) .....	0.9	1.0	0.5	0.6	0.6	0.6	0.2	0.5	0.4	0.9	0.5
MS (Ocn Erth Sci Tech).....	0.4	0.6	0.6	0.5	0.4	0.6	0.5	0.6	0.6	0.6	0.6
MS (Travel Ind Mgt) 8/ .....						0.2	0.2	0.1	0.3	0.2	0.3
MSW .....	1.9	3.2	2.1	2.3	2.4	2.4	2.3	2.2	2.2	2.6	1.7
MURP .....	0.2	0.3	0.3	0.3	0.2	0.3	0.3	0.3	0.3	0.4	0.3

TABLE 2 (cont.)

	1995-96	1996-97	1997-98	1998-99	1999-00	2000-01	2001-02	2002-03	2003-04	2004-05	2005-06
Doctor's Degrees .....	4.2	4.1	4.2	4.1	3.9	4.0	3.0	3.5	2.8	3.6	3.3
DrPH .....	0.2	0.2	0.1	0.2	0.2	0.1	<0.1	<0.1			
EdD 10/ .....	0.2	0.2	0.1	0.1							
PhD .....	3.8	3.7	4.0	3.9	3.7	3.9	3.0	3.4	2.8	3.6	3.3
First Professional Degrees .....	2.8	3.0	3.3	3.3	3.3	3.9	3.9	3.5	3.8	3.9	4.0
ArchD (Architecture) 11/ .....					<0.1	0.3	0.1	0.1	0.1	0.2	0.2
JD (Law) .....	1.6	1.7	1.9	1.8	1.9	2.2	2.2	1.9	2.0	2.3	2.3
MD (Medicine) .....	1.1	1.3	1.5	1.5	1.3	1.5	1.5	1.4	1.7	1.3	1.5
No Data.....					<0.1						
UH AT HILO .....	496	466	457	450	447	452	454	502	579	497	614
Percent of Total .....	100.0	100.0	100.0	100.0	100.0	100.0	100.0	100.0	100.0	100.0	100.0
Percent Change .....	12.7	-6.0	-1.9	-1.5	-0.7	1.1	0.4	10.6	15.3	-14.2	23.5
Bachelor's Degrees .....	83.5	90.3	89.9	93.1	91.9	92.7	89.2	89.6	89.5	91.1	87.5
BA .....	60.1	65.7	70.0	71.3	70.0	74.1	67.2	67.7	68.0	68.0	64.7
BA (Arts & Sciences) .....	56.3	60.7	66.5	67.1	66.9	69.5	62.3	63.1	64.1	63.6	61.1
BA (Business & Economics) .....	2.6	1.7	1.1	2.4	2.0	1.3	2.9	1.6	1.7	2.2	1.5
BA (Ka Haka 'Ula O Ke'elikelani).....	1.2	3.2	2.4	1.8	1.1	3.3	2.0	3.0	2.2	2.2	2.1
BBA .....	11.7	14.2	9.6	12.0	10.7	9.1	8.4	10.8	8.5	8.5	8.6
BS .....	11.7	10.5	10.3	9.8	11.2	9.5	13.7	11.2	13.0	14.7	14.2
BS (Agriculture) .....	5.0	4.9	4.4	4.0	4.9	5.1	5.9	3.6	4.3	5.2	4.1
BS (Arts & Sciences) .....	6.7	5.6	5.9	5.8	6.3	4.4	7.7	7.6	8.6	9.5	10.1
Certificates in Education .....	16.5	9.7	10.1	6.9	8.1	7.3	10.6	7.2	8.3	8.2	9.6
Arts & Science .....	16.5	9.7	10.1	6.9	8.1	7.3	10.6	7.2	6.4	8.0	7.5
Ka Haka 'Ula O Ke'elikelani 12/ .....									1.9	0.2	2.1
Master's Degrees .....							0.2	3.2	2.2	0.6	2.9
MA (Ka Haka 'Ula O Ke'elikelani) 13/ ..							0.2	0.2	0.3	0.6	0.7
MEd 14/ .....								3.0	1.9	0.6	2.3
UH-WEST O'AHU (BA) .....	199	199	147	189	196	221	179	167	212	194	265
Percent of Total .....	100.0	100.0	100.0	100.0	100.0	100.0	100.0	100.0	100.0	100.0	100.0
Percent Change .....	7.0	0.0	-26.1	28.6	3.7	12.8	-19.0	-6.7	26.9	-8.5	36.6

TABLE 2 (cont.)

	1995-96	1996-97	1997-98	1998-99	1999-00	2000-01	2001-02	2002-03	2003-04	2004-05	2005-06
COMMUNITY COLLEGES .....	2,623	2,676	2,710	2,626	2,653	2,535	2,553	2,711	2,596	2,671	2,637
Percent of Total .....	100.0	100.0	100.0	100.0	100.0	100.0	100.0	100.0	100.0	100.0	100.0
Percent Change .....	0.0	2.0	1.3	-3.1	1.0	-4.4	0.7	6.2	-4.2	2.9	-1.3
Certificates of Achievement .....	16.1	13.9	14.6	14.1	13.1	12.8	13.7	12.4	11.6	12.1	12.9
Associate Degrees .....	83.9	86.1	85.2	85.5	86.8	87.1	86.3	87.6	88.4	87.8	87.0
AA .....	37.5	40.5	40.0	43.0	41.2	38.5	41.3	40.7	43.8	43.2	42.7
AA (Liberal Arts) .....	37.5	40.5	40.0	43.0	41.2	38.5	41.3	40.7	43.8	43.2	42.7
AA (Industrial Educ) 15/ .....	<0.1										
AAS, AS, ATS .....	46.4	45.6	45.2	42.5	45.6	48.7	45.0	46.9	44.6	44.6	44.3
Advanced Prof Certificate 2/ .....										<0.1	<0.1
No Data .....			0.1	0.4	0.1	<0.1					
HAWAII COMMUNITY COLLEGE .....	400	417	394	402	313	321	293	308	317	315	339
Percent of Total .....	100.0	100.0	100.0	100.0	100.0	100.0	100.0	100.0	100.0	100.0	100.0
Percent Change .....	12.4	4.3	-5.5	2.0	-22.1	2.6	-8.7	5.1	2.9	-0.6	7.6
Certificates of Achievement.....	17.3	14.9	20.1	21.4	16.6	18.4	17.1	23.1	14.8	19.0	19.8
Associate Degrees .....	82.8	85.1	79.9	78.4	83.4	81.3	82.9	76.9	85.2	81.0	80.2
AA (Liberal Arts) .....	17.3	30.9	29.4	26.9	26.5	31.8	32.4	20.8	31.5	34.9	31.3
AAS, AS .....	65.5	54.2	50.5	51.5	56.9	49.5	50.5	56.2	53.6	46.0	49.0
No Data .....				0.2		0.3					
HONOLULU COMMUNITY COLLEGE .....	546	489	519	444	550	600	469	687	570	561	515
Percent of Total .....	100.0	100.0	100.0	100.0	100.0	100.0	100.0	100.0	100.0	100.0	100.0
Percent Change .....	7.7	-10.4	6.1	-14.5	23.9	9.1	-21.8	46.5	-17.0	-1.6	-8.2
Certificates of Achievement.....	16.8	14.1	15.8	16.0	17.3	11.8	15.6	7.4	8.1	5.5	8.9
Associate Degrees .....	83.2	85.9	83.6	81.8	82.2	88.2	84.4	92.6	91.9	94.3	90.7
AA .....	22.5	25.2	21.8	25.7	19.1	19.3	17.9	15.6	21.2	20.0	18.1
AA (Liberal Arts) .....	22.3	25.2	21.8	25.7	19.1	19.3	17.9	15.6	21.2	20.0	18.1
AA (Industrial Educ) 15/ .....	0.2										
AAS, AS .....	60.6	60.7	61.8	56.1	63.1	68.8	66.5	77.0	70.7	74.3	72.6

TABLE 2 (cont.)

	1995-96	1996-97	1997-98	1998-99	1999-00	2000-01	2001-02	2002-03	2003-04	2004-05	2005-06
Advanced Prof Certificate 2/ .....										0.2	0.4
No Data .....			0.6	2.3	0.5						
KAPI'OLANI COMMUNITY COLLEGE .....	580	624	676	663	719	660	702	608	649	731	641
Percent of Total .....	100.0	100.0	100.0	100.0	100.0	100.0	100.0	100.0	100.0	100.0	100.0
Percent Change .....	-9.5	7.6	8.3	-1.9	8.4	-8.2	6.4	-13.4	6.7	12.6	-12.3
Certificates of Achievement.....	12.4	9.6	10.5	9.8	8.2	9.1	8.0	11.0	8.9	10.1	9.7
Associate Degrees .....	87.6	90.4	89.5	90.2	91.8	90.9	92.0	89.0	91.1	89.9	90.3
AA (Liberal Arts) .....	33.4	34.3	36.1	37.9	34.5	30.8	34.3	38.3	36.4	36.9	35.1
AAS, AS, ATS .....	54.1	56.1	53.4	52.3	57.3	60.2	57.7	50.7	54.7	52.9	55.2
KAUA'I COMMUNITY COLLEGE .....	180	187	219	167	131	123	130	123	89	165	114
Percent of Total .....	100.0	100.0	100.0	100.0	100.0	100.0	100.0	100.0	100.0	100.0	100.0
Percent Change .....	23.3	3.9	17.1	-23.7	-21.6	-6.1	5.7	-5.4	-27.6	85.4	-30.9
Certificates of Achievement.....	20.0	20.9	16.4	17.4	24.4	19.5	25.4	17.9	22.5	24.8	20.2
Associate Degrees .....	80.0	79.1	83.6	82.6	75.6	80.5	74.6	82.1	77.5	75.2	79.8
AA (Liberal Arts) .....	30.6	26.2	27.4	26.3	39.7	33.3	26.9	41.5	27.0	33.3	27.2
AAS, AS .....	49.4	52.9	56.2	56.3	35.9	47.2	47.7	40.7	50.6	41.8	52.6
LEEWARD COMMUNITY COLLEGE .....	550	632	576	575	606	465	525	559	534	482	533
Percent of Total .....	100.0	100.0	100.0	100.0	100.0	100.0	100.0	100.0	100.0	100.0	100.0
Percent Change .....	-10.3	14.9	-8.9	-0.2	5.4	-23.3	12.9	6.5	-4.5	-9.7	10.6
Certificates of Achievement.....	10.0	9.5	6.9	5.6	6.4	6.0	7.2	5.5	3.2	3.5	4.1
Associate Degrees .....	90.0	90.5	93.1	94.4	93.6	94.0	92.8	94.5	96.8	96.5	95.9
AA (Liberal Arts) .....	63.6	64.7	69.4	73.2	72.8	72.0	75.2	78.2	80.9	81.1	80.5
AAS, AS .....	26.4	25.8	23.6	21.2	20.8	21.9	17.5	16.3	15.9	15.4	15.4
MAUI COMMUNITY COLLEGE .....	229	216	206	257	219	235	296	293	308	306	360
Percent of Total .....	100.0	100.0	100.0	100.0	100.0	100.0	100.0	100.0	100.0	100.0	100.0
Percent Change .....	4.6	-5.7	-4.6	24.8	-14.8	7.3	26.0	-1.0	5.1	-0.6	17.6

TABLE 2 (cont.)

	1995-96	1996-97	1997-98	1998-99	1999-00	2000-01	2001-02	2002-03	2003-04	2004-05	2005-06
Certificates of Achievement.....	40.2	36.6	39.8	33.1	32.4	35.3	33.1	32.1	36.4	32.7	33.1
Associate Degrees .....	59.8	63.4	59.7	66.9	67.6	64.7	66.9	67.9	63.6	67.3	66.9
AA (Liberal Arts) .....	27.9	25.9	21.8	31.5	23.3	20.0	23.0	27.0	30.8	35.3	30.3
AAS, AS, ATS .....	31.9	37.5	37.9	35.4	44.3	44.7	43.9	41.0	32.8	32.0	36.7
No Data .....			0.5								
WINDWARD COMMUNITY COLLEGE .....	138	111	120	118	115	131	138	133	129	111	135
Percent of Total .....	100.0	100.0	100.0	100.0	100.0	100.0	100.0	100.0	100.0	100.0	100.0
Percent Change .....	-2.8	-19.6	8.1	-1.7	-2.5	13.9	5.3	-3.6	-3.0	-14.0	21.6
Certificates of Achievement.....	4.3	2.7	5.0	2.5			0.7			0.9	0.7
Associate Degrees .....	95.7	97.3	95.0	97.5	100.0	100.0	99.3	100.0	100.0	99.1	99.3
AA (Liberal Arts) .....	93.5	92.8	89.2	93.2	97.4	100.0	99.3	100.0	100.0	98.2	99.3
AAS, AS .....	2.2	4.5	5.8	4.2	2.6					0.9	

Note: Percentages may not tie due to rounding.

- 1/ Undergraduate certificate in Dental Hygiene stopped-out in May 1996; terminated in Spring 1998.
- 2/ Third year Advanced Professional Certificate, approved by the UH Board of Regents in July 2003, effective Spring 2004.
- 3/ Manoa's Professional Diploma program stopped-out, AY 1994-95 to 1996-97. Program redesigned and renamed Professional Diploma in Education. Post Baccalaureate credential created in Fall 1996. Data shown here may include both PBs and PDs for the years after Fall 1996. Includes Certificates in Education and Post-Bach in Indigenous Education at UH Hilo.
- 4/ BArch and MArch degrees replaced by the Architecture Doctorate (ArchD) program in July 1999. The ArchD is a first professional degree; students may exit with a BA in Interdisciplinary studies.
- 5/ Master in Law (LLM) for Foreign Professionals added in Fall 2003.
- 6/ Masters in Human Resources Management approved by the Board of Regents, effective Spring 2001.
- 7/ Degree name changed from "Library and Info Studies" (MLIS) to "Library and Info Science" (MLISC), effective Spring 1998.
- 8/ Travel Industry Management masters changed from MPS degree to MS degree, effective Spring 1999.
- 9/ MS in Kinesiology and Leisure Science (College of Education) added, Fall 1999.
- 10/ EdD degree changed to PhD, effective February 1999.
- 11/ Architecture doctorate (ArchD) added July 1999.
- 12/ Post-baccalaureate certificate in Kahuawaiola Indigenous Teacher Education established in January 2003.
- 13/ MA in Hawaiian Language and Literature added in Fall 1997.
- 14/ MEd in Education added in Fall 2000.
- 15/ Industrial Education was changed from an AA to an AAS in Fall 1996.

SOURCES: UH Manoa Admissions & Records Office and Manoa Graduate Division; UH Hilo Registrar's Office; UH West O'ahu Student Services; UH Community Colleges Registrars Offices; Computer Reports 3013H and 2527. FY 2002-03 data from Student Information Management System (SIMS). FY 2003-04 data from Student Information Management System (SIMS) and Banner Operational Data Store (ODS). FY 2004-05 data from Banner Operational Data Store (ODS) Iro\_Degree.



TABLE 3  
DEGREES AND CERTIFICATES EARNED, BY CAMPUS, DEGREE TYPE, GENDER AND ETHNICITY  
UNIVERSITY OF HAWAII  
JULY 1, 2005 TO JUNE 30, 2006

CAMPUS / PROGRAM	GRAND TOTAL	ASIAN AND PACIFIC ISLANDER 1/																	OTHER ETHNIC GROUPS									
		TOTAL ASIAN/PACIFIC	ASIAN										HAWAIIAN & PACIFIC ISLANDER							MIX A/P	AFR AM	AMER IN / AK	CAU	HISP	MIX BKGD	NO RESP		
			SUB TOTAL	CHN	FIL	IND SUB	JPN	KOR	LAO	THAI	VIET	OTH ASN	SUB TOTAL	GUAM CHAM	HWN/ PT HA	MICR	SAM	TON	OTH PAC								MIX PAC	
TOTAL .....	7,917	4,696	3,208	516	823	22	1,446	254	5	7	32	103	1,169	12	970	11	58	3	94	21	319	90	31	1,883	153	888	176	
Men .....	3,101	1,842	1,317	229	363	11	554	98	1	1	15	45	392	5	322	4	19		36	6	133	40	17	756	59	329	58	
Women .....	4,785	2,850	1,888	286	460	11	890	156	4	6	17	58	776	7	648	7	39	3	57	15	186	50	14	1,126	94	558	93	
No Data .....	31	4	3	1			2						1						1					1	1	25		
Certificate of Achievement (CA) .....	340	230	141	7	84		40	6	1		2	1	82		77	1			3	1	7		3	58	8	40	1	
Men .....	149	106	68	3	39		22	2	1		1		34		32	1			1		4		3	21	3	15	1	
Women .....	190	123	72	4	45		17	4			1	1	48		45				2	1	3		37	5	25			
No Data .....	1	1	1				1																					
Associate in Arts (AA) .....	1,127	698	402	55	173	1	148	18	1	1	1	4	237	2	213	2	5	1	8	6	59	21	5	224	30	135	14	
Men .....	350	223	140	18	67		47	5			1	2	57	1	51		1		2	2	26	7	2	58	12	45	3	
Women .....	777	475	262	37	106	1	101	13	1	1		2	180	1	162	2	4	1	6	4	33	14	3	166	18	90	11	
No Data .....																												
Assoc in Sci / App Sci / Tec St (AS,AAS,ATS) ...	1,168	813	549	50	219	4	227	30	1		3	15	216	1	207	3			5		48	10	9	167	11	150	8	
Men .....	584	421	285	28	119	2	117	12			2	5	106	1	102	2			1		30	3	8	74	5	70	3	
Women .....	583	391	263	22	100	2	109	18	1		1	10	110		105	1			4		18	7	1	93	6	80	5	
No Data .....	1	1	1				1																					
Advanced Professional Certificate (APC) .....	2	1	1	1																				1				
Men .....	2	1	1	1																				1				
Bachelor's Degrees (BA,BS,etc.) .....	3,639	2,129	1,491	250	295	2	745	140	2	1	10	46	480	8	349	5	46	2	56	14	158	35	11	853	83	424	104	
Men .....	1,401	809	601	117	124		285	51			2	22	153	3	105	1	16		24	4	55	19	2	355	27	157	32	
Women .....	2,213	1,318	889	132	171	2	460	89	2	1	8	24	326	5	244	4	30	2	31	10	103	16	9	497	56	267	50	
No Data .....	25	2	1	1									1						1					1			22	
Post Baccalaureate / Cert in Ed (PB,PDE,etc.) ..	139	58	35	4	8		21	1					17		15		1		1		6			60	2	19		
Men .....	49	23	17	2	2		12						2		2						4			21	2	3		
Women .....	90	35	18	2	6		9	1					15		13		1		1		2			39		16		
Master's Degrees (MA,MS,etc) .....	1,181	611	464	107	35	14	218	47		5	14	24	114	1	91		6		16		33	21	3	408	17	92	29	
Men .....	418	191	154	43	7	9	55	21		1	7	11	29		22		2		5		8	9	2	170	9	29	8	
Women .....	761	420	310	64	28	5	163	26		4	7	13	85	1	69		4		11		25	12	1	238	8	63	19	
No Data .....	2																										2	
Doctor's Degrees (PhD,EdD,DrPH) .....	147	58	50	19			13	7					7		4				3		1			73	2	7	7	
Men .....	74	25	20	10			2	4					4		2				2		1			43	1	2	3	
Women .....	72	33	30	9			11	3					3		2				1					30	1	4	4	
No Data .....	1																										1	
First Professional Degrees (JD,MD,ArchD) .....	174	98	75	23	9	1	34	5			1	2	16		14				2		7	3		39		21	13	
Men .....	74	43	31	7	5		14	3			1	1	7		6				1		5	2		13		8	8	
Women .....	99	55	44	16	4	1	20	2			1	1	9		8				1		2	1		26		13	4	
No Data .....	1																										1	
UH AT MANOA .....	4,401	2,571	1,935	390	283	16	942	191	2	6	26	79	453	9	324	2	49	2	54	13	183	43	8	1,103	72	452	152	
Men .....	1,702	961	749	173	114	9	330	75		1	11	36	149	3	105		15		22	4	63	22	3	472	31	162	51	
Women .....	2,670	1,608	1,185	216	169	7	612	116	2	5	15	43	303	6	219	2	34	2	31	9	120	21	5	630	41	289	76	
No Data .....	29	2	1	1									1						1					1	1	25		
Bachelor's Degrees .....	2,837	1,784	1,325	238	234	1	666	131	2	1	10	42	321	8	221	2	42	2	33	13	138	19	5	552	52	322	103	
Men .....	1,109	687	530	111	100		250	47			2	20	111	3	77		13		14	4	46	11	1	236	20	122	32	
Women .....	1,703	1,095	794	126	134	1	416	84	2	1	8	22	209	5	144	2	29	2	18	9	92	8	4	315	32	200	49	
No Data .....	25	2	1	1									1						1					1			22	



TABLE 3 (cont.)

CAMPUS / PROGRAM	GRAND TOTAL	ASIAN AND PACIFIC ISLANDER 1/														OTHER ETHNIC GROUPS																	
		TOTAL ASIAN/PACIFIC	SUB TOTAL	ASIAN							OTH ASN	SUB TOTAL	HAWAIIAN & PACIFIC ISLANDER						MIX A/P	AFR AM	AMER IN / AK	CAU	HISP	MIX BKGD	NO RESP								
				CHN	FIL	IND SUB	JPN	KOR	LAO	THAI			VIET	GUAM	HWN/ PT HA	MICR	SAM	TON								OTH PAC	MIX PAC						
HAWAII COMMUNITY COLLEGE .....	339	207	81	4	41		31	4							1	120		119						1	6			4	71	7	44	6	
Men .....	162	103	49	2	25		22									50		50							4			4	29	4	20	2	
Women .....	175	102	30	2	16		7	4							1	70		69						1	2			42	3	24	4		
No Data .....	2	2	2				2																										
Certificate of Achievement .....	67	44	20		11		9									23		23							1			2	8	2	10	1	
Men .....	54	37	18		10		8									18		18							1			2	6	2	6	1	
Women .....	12	6	1		1											5		5										2		4			
No Data .....	1	1	1				1																										
Associate in Arts .....	106	53	11	2	4		4	1								39		38					1		3			39	3	9	2		
Men .....	22	8	1		1											6		6							1			11	1	2			
Women .....	84	45	10	2	3		4	1								33		32				1			2			28	2	7	2		
Assoc in Applied Sci / Science .....	166	110	50	2	26		18	3								58		58							2			2	24	2	25	3	
Men .....	86	58	30	2	14		14									26		26							2			2	12	1	12	1	
Women .....	79	51	19		12		3	3								32		32											12	1	13	2	
No Data .....	1	1	1				1																										
HONOLULU COMMUNITY COLLEGE .....	515	366	231	25	85	3	95	11			3	9				112	1	104	2	2			2	1	23	14	5	51	8	70	1		
Men .....	333	238	158	14	56	1	74	6			3	4				65	1	61	1				2		15	5	5	34	5	45	1		
Women .....	182	128	73	11	29	2	21	5				5				47		43	1	2				8	9		17	3	25				
Certificate of Achievement .....	46	37	23	3	12		7					1				11		10					1		3			3		6			
Men .....	32	25	16	1	9		6									7		6							2			3		4			
Women .....	14	12	7	2	3		1					1				4		4							1					2			
Associate in Arts .....	93	55	31	6	16		5	3						1		22		17	1	2			1	1	2	8	1	15	4	9	1		
Men .....	31	16	10	2	2		4	1						1		5		4					1	1	1	3	1	5	2	3	1		
Women .....	62	39	21	4	14		1	2								17		13	1	2					1	5	10	2	6				
Associate in Applied Science / Science .....	374	273	176	15	57	3	83	8				2	8			79	1	77	1						18	6	4	32	4	55			
Men .....	268	196	131	10	45	1	64	5				2	4			53	1	51	1						12	2	4	25	3	38			
Women .....	106	77	45	5	12	2	19	3					4			26		26							6	4	7	1	17				
Advanced Professional Certificate .....	2	1	1	1																								1					
Men .....	2	1	1	1																								1					
KAPI'OLANI COMMUNITY COLLEGE .....	641	470	361	66	88	1	169	25	1		3	8				72	1	64	1				4	2	37	3	2	87	3	72	4		
Men .....	214	161	121	28	34	1	50	6			1	1				22	1	19					1	1	18		1	28	1	23			
Women .....	427	309	240	38	54		119	19	1			7				50		45	1				3	1	19	3	1	59	2	49	4		
Certificate of Achievement .....	62	46	28	3	16		5	2								17		16							1			6	1	9			
Men .....	12	9	8	1	3		3									1		1										2		1			
Women .....	50	37	20	2	13		2	2								16		15							1			4	1	8			
Associate in Arts .....	225	163	120	33	15		62	8				2				26		23						2	17	1	2	26	2	30	1		
Men .....	81	59	37	12	3		20	2								12		10						1	10		1	7	1	13			
Women .....	144	104	83	21	12		42	6				2				14		13						1	7	1	1	19	1	17	1		
Assoc in App Sci / Sci / Tech Studies .....	354	261	213	30	57	1	102	15	1			6				29		25	1				3		19	2		55		33	3		
Men .....	121	93	76	15	28	1	27	4								9		8					1		8			19		9			
Women .....	233	168	137	15	29		75	11	1			5				20		17	1				2		11	2		36		24	3		
KAUA'I COMMUNITY COLLEGE .....	114	66	35		26		9									25		24					1		6			28		20			
Men .....	37	22	10		9		1									10		10							2			8		7			
Women .....	77	44	25		17		8									15		14					1		4			20		13			
Certificate of Achievement .....	23	11	6		3		3									5		5										9		3			
Men .....	7	4	1		1											3		3										2		1			
Women .....	16	7	5		2		3									2		2										7		2			

