

DEGREES AND CERTIFICATES EARNED

UNIVERSITY OF HAWAI'I - WEST O'AHU

FISCAL YEAR 1999-00

Institutional Research Office

University of Hawaii

September 2000

File Reference: Management and Planning Support Folder, Students

Reports available online at: <http://www.hawaii.edu/iro/maps.htm>

Figure 1
Degrees Earned, By Division

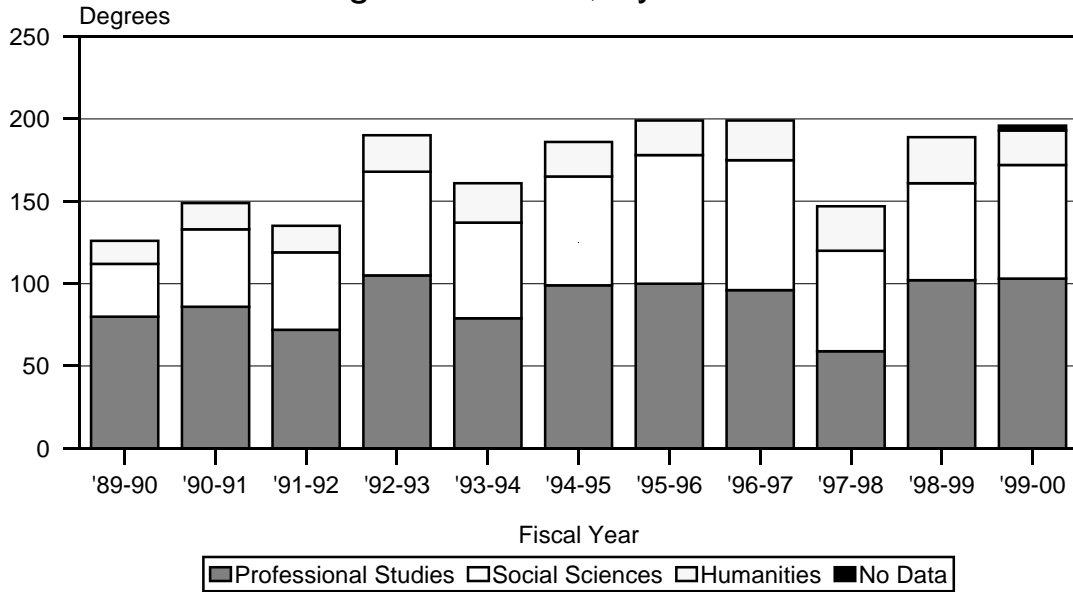
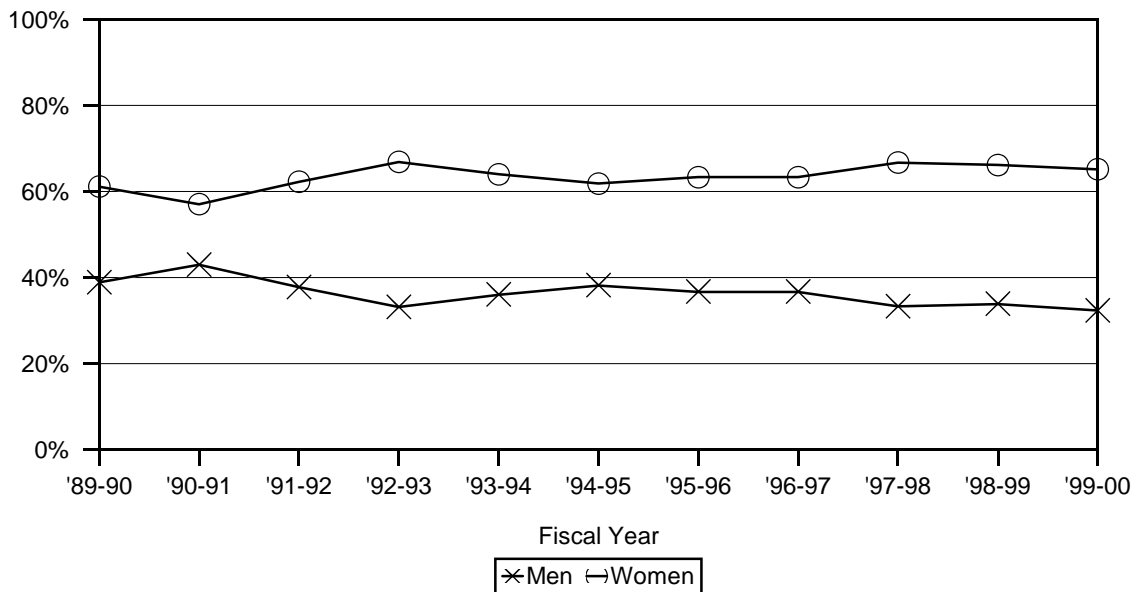


Figure 2
Degrees Earned, By Gender



University of Hawai'i - West O'ahu

Figure 3
Degrees Earned, Division By Gender, FY 1999-00

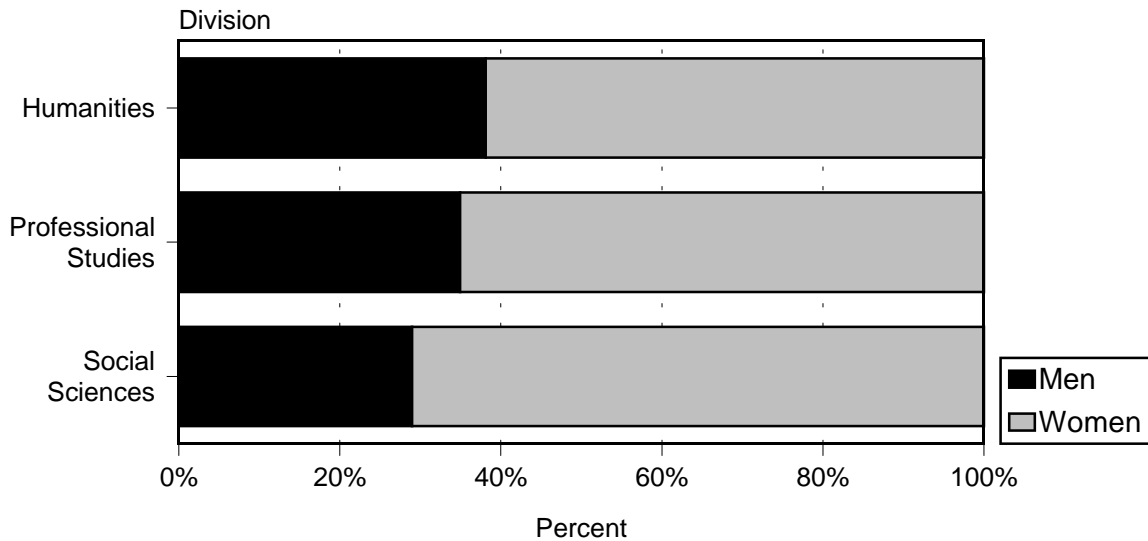
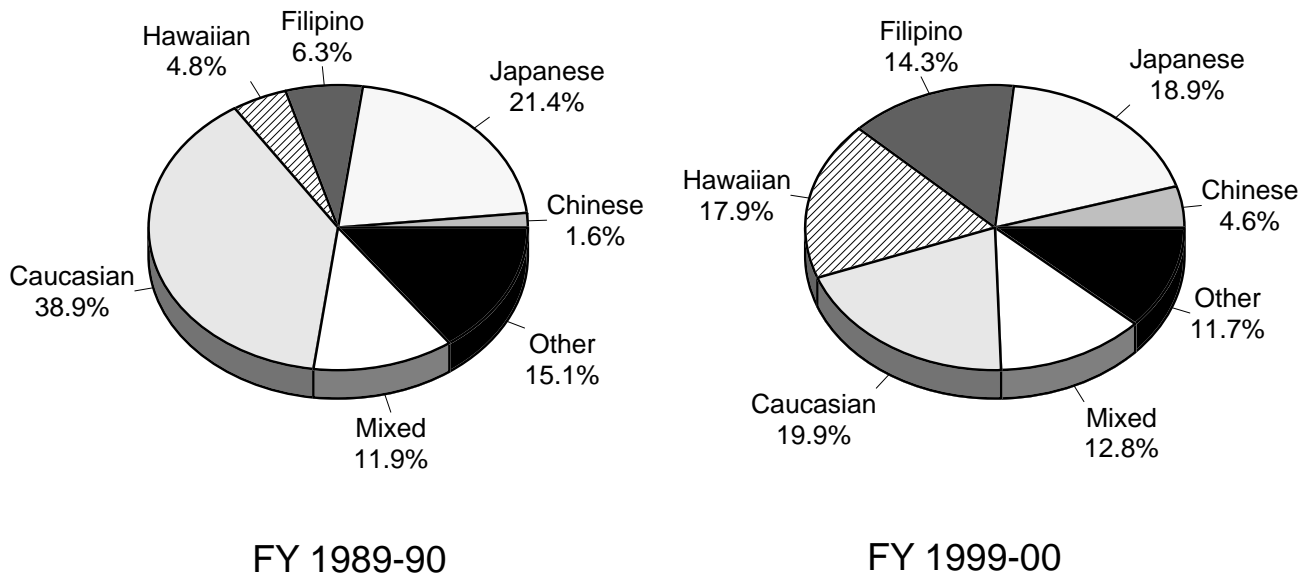


Figure 4
Degrees Earned, By Ethnicity



Note: Ethnicity data is unavailable prior to FY 1989-90.

TABLE 1
DEGREES EARNED, BY DIVISION AND PROGRAM
UNIVERSITY OF HAWAI'I - WEST O'AHU
FISCAL YEARS (July 1 to June 30) 1989-90 TO 1999-00

DIVISION AND PROGRAM	1989-90	1990-91	1991-92	1992-93	1993-94	1994-95	1995-96	1996-97	1997-98	1998-99	1999-00
TOTAL	126	149	135	190	161	186	199	199	147	189	196
Men	49	64	51	63	58	71	73	73	49	64	64
Women	77	85	84	127	103	115	126	126	98	125	129
No Data.....											3
Percent Change	8.6	18.3	-9.4	40.7	-15.3	15.5	7.0	0.0	-26.1	28.6	3.7
BY DIVISION AND PROGRAM:											
HUMANITIES DIVISION	14	16	16	22	24	21	21	24	27	28	21
Men	4	4	2	10	7	10	6	10	7	11	8
Women	10	12	14	12	17	11	15	14	20	17	13
Humanities (BA) 1/							5	5	5	6	1
Men								3		2	1
Women							5	2	5	4	
Hum-Hawn-Pac Studies (BA) 2/										2	1
Men										2	1
Women											
Hum-History (BA)	5	7	5	14	12	12	6	9	9	13	9
Men	2	1		8	4	7	2	6	4	7	3
Women	3	6	5	6	8	5	4	3	5	6	6
Hum-Literature (BA)	8	7	9	8	10	7	9	10	12	7	7
Men	1	2		2	3	2	3	1	3	2	1
Women	7	5	9	6	7	5	6	9	9	5	6
Hum-Philosophy (BA)	1	2	2		2	2	1		1		3
Men	1	1	2			1	1				3
Women		1			2	1			1		
PROFESSIONAL STUDIES DIVISION 3/.....	80	86	72	105	79	99	100	96	59	102	103
Men	36	43	30	40	33	46	41	42	26	33	36
Women	44	43	42	65	46	53	59	54	33	69	67

TABLE 1 (cont.)

DIVISION AND PROGRAM	1989-90	1990-91	1991-92	1992-93	1993-94	1994-95	1995-96	1996-97	1997-98	1998-99	1999-00
Business Administration 4/.....	50	52	43	71	45	50	60	51	38	67	60
Men.....	23	26	18	26	22	23	24	25	17	20	24
Women.....	27	26	25	45	23	27	36	26	21	47	36
Accounting (BA).....										13	25
Men.....										4	5
Women.....										9	20
Business Admin (BA).....										21	24
Men.....										10	11
Women.....										11	13
Bus Admin (BA-Prof St) 4/.....	50	52	43	71	45	50	60	51	38	33	11
Men.....	23	26	18	26	22	23	24	25	17	6	8
Women.....	27	26	25	45	23	27	36	26	21	27	3
Public Administration 4/.....	30	34	29	34	34	49	40	45	21	35	43
Men.....	13	17	12	14	11	23	17	17	9	13	12
Women.....	17	17	17	20	23	26	23	28	12	22	31
Justice Admin (BA).....										6	12
Men.....										3	5
Women.....										3	7
Public Admin (BA).....										3	5
Men.....										1	1
Women.....										2	4
Public Admin (BA-Prof St) 4/.....	30	34	29	34	34	49	40	45	21	26	26
Men.....	13	17	12	14	11	23	17	17	9	9	6
Women.....	17	17	17	20	23	26	23	28	12	17	20
SOCIAL SCIENCES DIVISION	32	47	47	63	58	66	78	79	61	59	69
Men	9	17	19	13	18	15	26	21	16	20	20
Women	23	30	28	50	40	51	52	58	45	39	49
Soc Sci-Anthropology (BA)			1	1	4	4	2	6	4	4	5
Men					2	1		1	1	1	3
Women			1	1	2	3	2	5	3	3	2
Soc Sci-Economics (BA)	1	3	2	2	2	1	4	6	2	1	2
Men	1	2	2	1	2		2	4	2	1	2
Women		1		1		1	2	2			
Soc Sci-Political Science (BA)	2	4	2	3	4	4	7	5	3	6	4
Men	2	2	1	1	4	1	5	4		4	2
Women		2	1	2		3	2	1	3	2	2

TABLE 1 (cont.)

DIVISION AND PROGRAM	1989-90	1990-91	1991-92	1992-93	1993-94	1994-95	1995-96	1996-97	1997-98	1998-99	1999-00
Soc Sci-Psychology (BA)	14	23	28	43	42	44	47	46	44	35	43
Men	3	7	9	7	9	11	12	5	12	9	10
Women	11	16	19	36	33	33	35	41	32	26	33
Soc Sci-Sociology (BA)	15	17	14	14	6	13	18	16	8	13	15
Men	3	6	7	4	1	2	7	7	1	5	3
Women	12	11	7	10	5	11	11	9	7	8	12
NO DATA.....											3

Note: In FY 1999-00, graduates numbered 185; 11 students earned two degrees.

1/ The 'Humanities' category was added in FY 1995-96 and encompasses degrees focusing on American, Asian, European, and Pacific Studies themes. These themes were reported in previous years under Hum-History.

2/ Hawaiian Pacific Studies is a new specialization under the BA in Humanities degree, effective Fall 1998.

3/ Business Administration and Public Administration Divisions reported under previous MAPS reports are degree programs and should have been listed under the Professional Studies Division.

4/ Students completing their B.A. in Professional Studies under the old curriculum will be allowed to complete their degrees. In order to reflect the current organization and curriculum of the Professional Studies Division (effective Fall 1998), the Public Administration and Business Administration specializations previously listed under Professional Studies, have been incorporated into the new Public Administration and Business Administration fields of study.

Sources: Computer Report 1454B; University of Hawai'i - West O'ahu Student Services.

TABLE 2
DEGREES EARNED, BY PROGRAM, GENDER, AND ETHNICITY
UNIVERSITY OF HAWAI'I - WEST O'AHU
JULY 1, 1999 TO JUNE 30, 2000

DIVISION, PROGRAM, AND GENDER	GRAND TOTAL	SUB-T ASIAN/ PACIFIC	ASIAN / PACIFIC ISLANDER								SUB-T CAU- CASIAN	CAUCASIAN		SUB-T OTHER	OTHER			
			JPN	CHN	KOR	HWN/ PT HA		PAC ISLE	OTH ASN	MIX A/P		CAU	PORT		HISP	AFR AM	IND / AK	MIX BKGD
						FIL	PT											
TOTAL	196	125	37	9	3	28	35	2	2	9	39	38	1	32	3	4	25	
Men	64	45	11	6	1	11	10		1	5	12	11	1	7	1		6	
Women	129	79	26	3	2	16	25	2	1	4	26	26		24	2	4	18	
No Data.....	3	1				1					1	1		1			1	
HUMANITIES DIVISION	21	14	3			4	5			2	2	2		5			5	
Men	8	6	1			2	1			2	1	1		1			1	
Women	13	8	2			2	4				1	1		4			4	
Humanities (BA)	1	1				1												
Men	1	1				1												
Hum-Hawn-Pac Studies (BA) 1/.....	1	1					1											
Women	1	1					1											
Hum-History (BA)	9	5	2			1	2				1	1		3			3	
Men	3	1				1					1	1		1			1	
Women	6	4	2				2							2			2	
Hum-Literature (BA)	7	4	1			2	1				1	1		2			2	
Men	1	1	1															
Women	6	3				2	1				1	1		2			2	
Hum-Philosophy (BA)	3	3					1			2								
Men	3	3					1			2								
PROFESSIONAL STUDIES DIV 2/.....	103	71	24	8	3	14	15	1	2	4	21	21		11	2	2	7	
Men	36	25	6	6	1	5	4		1	2	8	8		3	1		2	
Women	67	46	18	2	2	9	11	1	1	2	13	13		8	1	2	5	
Business Administration 3/.....	60	39	16	4	3	10	4		1	1	17	17		4			4	
Men	24	17	6	3	1	4	2		1		6	6		1			1	
Women	36	22	10	1	2	6	2			1	11	11		3			3	

Table 2 (cont.)

DIVISION, PROGRAM, AND GENDER	GRAND TOTAL	SUB-T ASIAN/ PACIFIC	ASIAN / PACIFIC ISLANDER								SUB-T CAU- CASIAN	CAUCASIAN		SUB-T OTHER	OTHER			
			JPN	CHN	KOR	HWN/ PT HA		PAC ISLE	OTH ASN	MIX A/P		CAU	PORT		HISP	AFR AM	IND / AK	MIX BKGD
						FIL	PT											
Accounting (BA).....	25	15	6	1	2	5				1	7	7	3			3		
Men.....	5	4	1	1		1				1	1	1						
Women.....	20	11	5		2	4					6	6	3			3		
Business Admin (BA).....	24	19	7	2	1	4	4			1	4	4	1			1		
Men.....	11	9	3	1	1	2	2				1	1	1			1		
Women.....	13	10	4	1		2	2			1	3	3						
Bus Admin (BA-Prof St) 3/.....	11	5	3	1		1					6	6						
Men.....	8	4	2	1		1					4	4						
Women.....	3	1	1								2	2						
Public Administration 3/.....	43	32	8	4		4	11	1	1	3	4	4	7	2	2	3		
Men	12	8		3		1	2			2	2	2	2	1		1		
Women	31	24	8	1		3	9	1	1	1	2	2	5	1	2	2		
Justice Admin (BA).....	12	6	1	1		2	1			1	1	1	5	2	1	2		
Men.....	5	3		1		1				1	1	1	1	1				
Women.....	7	3	1			1	1						4	1	1	2		
Public Admin (BA).....	5	3					1			2	1	1	1		1			
Men.....	1	1								1								
Women.....	4	2					1			1	1	1	1		1			
Public Admin (BA-Prof St) 3/.....	26	23	7	3		2	9	1	1		2	2	1			1		
Men.....	6	4		2			2				1	1	1			1		
Women.....	20	19	7	1		2	7	1	1		1	1						
SOCIAL SCIENCES DIV	69	39	10	1		9	15	1		3	15	14	1	15	1	2	12	
Men	20	14	4			4	5			1	3	2	1	3			3	
Women	49	25	6	1		5	10	1		2	12	12		12	1	2	9	
Soc Sci-Anthropology (BA)	5	2	1				1				3	3						
Men	3	2	1				1				1	1						
Women	2										2	2						
Soc Sci-Economics (BA)	2	2				2												
Men	2	2				2												
Soc Sci-Political Sci (BA)	4	4	1			2				1								

Table 2 (cont.)

DIVISION, PROGRAM, AND GENDER	GRAND TOTAL	SUB-T ASIAN/ PACIFIC	ASIAN / PACIFIC ISLANDER								SUB-T CAU- CASIAN	CAUCASIAN		SUB-T OTHER	OTHER			
			JPN	CHN	KOR	HWN/		PAC	OTH	MIX		CAU	PORT		HISP	AFR AM	IND / AK	MIX BKGD
						FIL	PT HA											
Men	2	2					1				1							
Women	2	2	1				1											
Soc Sci-Psychology (BA)	43	22	6	1		4	9	1		10	9	1	11	1	1		9	
Men	10	6	3				3			2	1	1	2				2	
Women	33	16	3	1		4	6	1		8	8		9	1	1		7	
Soc Sci-Sociology (BA)	15	9	2			1	5			2	2		4		1		3	
Men	3	2				1	1						1				1	
Women	12	7	2				4			2	2		3		1		2	
NO DATA.....	3	1				1				1	1		1				1	

1/ Hawaiian Pacific Studies is a new specialization under the BA in Humanities degree, effective Fall 1998.

2/ Business Administration and Public Administration Divisions reported under previous MAPS reports are degree programs and should have been listed under the Professional Studies Division.

3/ Students completing their B.A. in Professional Studies under the old curriculum will be allowed to complete their degrees. In order to reflect the current organization and curriculum of the Professional Studies Division (effective Fall 1998), the Public Administration and Business Administration specializations previously listed under Professional Studies, have been incorporated into the new Public Administration and Business Administration fields of study.

Sources: Computer Report 1454B; University of Hawai'i - West O'ahu Student Services.

APPENDIX 1
 CERTIFICATES AWARDED
 UNIVERSITY OF HAWAI'I - WEST O'AHU
 FISCAL YEAR 1999-00

PROGRAM	TOTAL	MEN	WOMEN
TOTAL.....	2		2
Substance Abuse & Addition Studies (SC) 1/.....	2		2

1/ The Studies Certificate (SC) in Substance Abuse & Addiction Studies was approved by the UH Board of Regents, effective 09/10/99.