

DEGREES AND CERTIFICATES EARNED

UNIVERSITY OF HAWAI'I - WEST O'AHU

FISCAL YEAR 1995-96

Institutional Research Office

University of Hawai'i

September 1996

Figure 1  
Degrees Earned, By Division

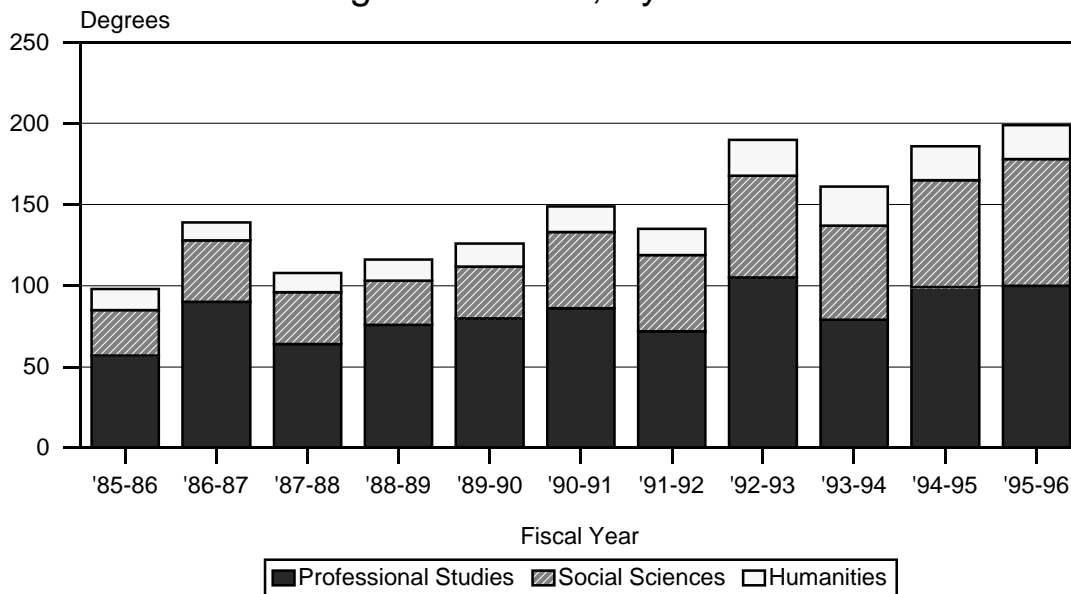


Figure 2  
Degrees Earned, By Gender

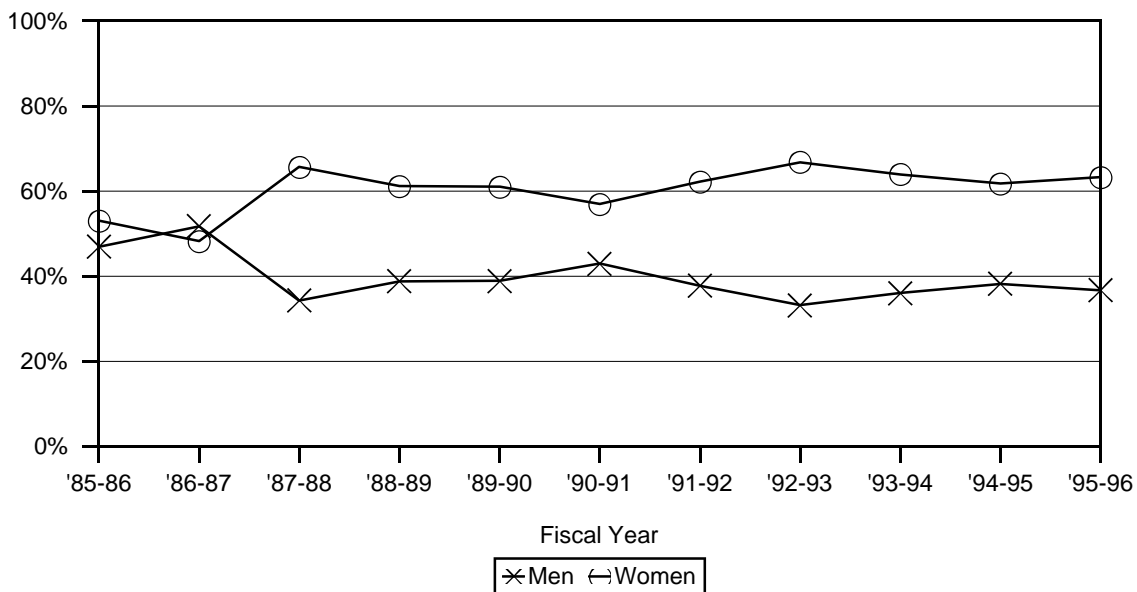


Figure 3  
Degrees Earned, By Division and Gender, FY 1995-96

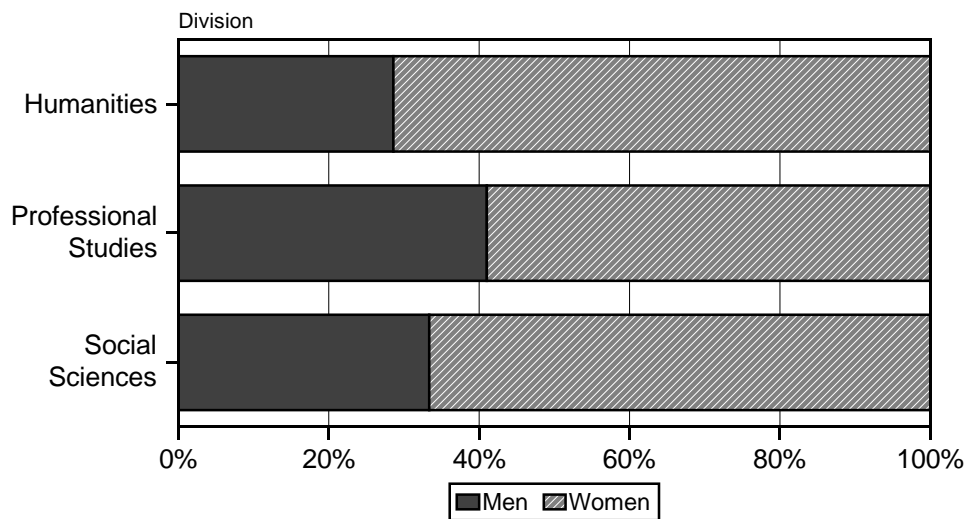
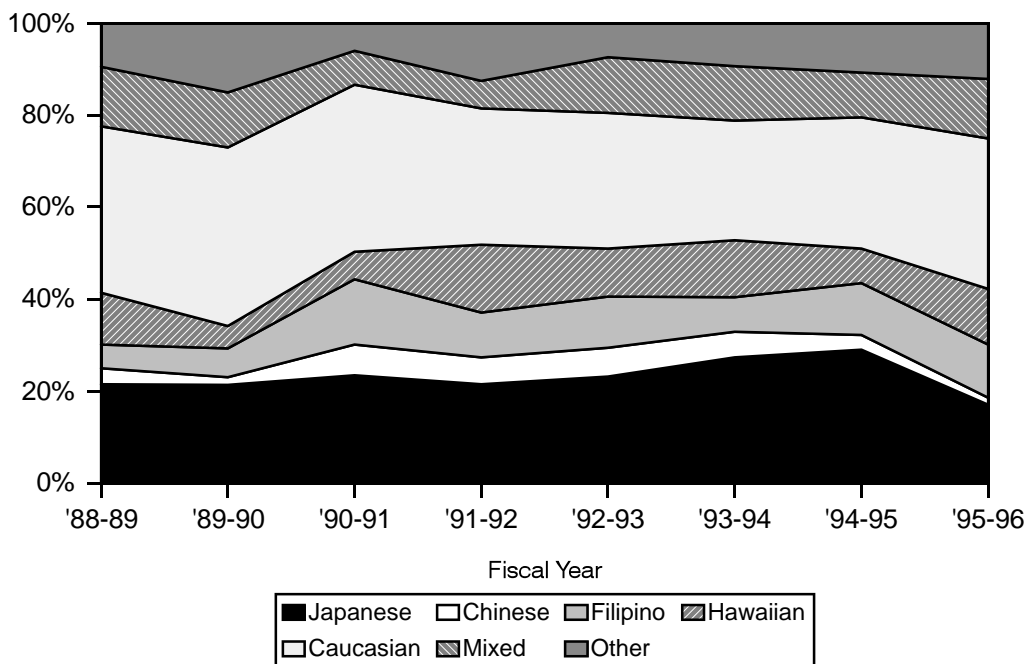


Figure 4  
Degrees Earned, By Ethnicity



Note: Ethnicity data is unavailable prior to FY 1988-89.

TABLE 1  
DEGREES EARNED, BY DIVISION AND PROGRAM  
UNIVERSITY OF HAWAII - WEST O'AHU  
FISCAL YEARS (July 1 to June 30) 1985-86 TO 1995-96

DIVISION AND PROGRAM	1985-86	1986-87	1987-88	1988-89	1989-90	1990-91	1991-92	1992-93	1993-94	1994-95	1995-96
TOTAL .....	98	139	108	116	126	149	135	190	161	186	199
Men .....	46	72	37	45	49	64	51	63	58	71	73
Women .....	52	67	71	71	77	85	84	127	103	115	126
Percent Change .....	27.3	41.8	-22.3	7.4	8.6	18.3	-9.4	40.7	-15.3	15.5	7.0
HUMANITIES DIVISION .....	13	11	12	13	14	16	16	22	24	21	21
Men .....	5	6	3	3	4	4	2	10	7	10	6
Women .....	8	5	9	10	10	12	14	12	17	11	15
Humanities (BA) 1/ .....											5
Women .....											5
Hum-English (BA) .....	4	7	6	1	8	7	9	8	10	7	9
Men .....	1	2	1	1	1	2		2	3	2	3
Women .....	3	5	5		7	5	9	6	7	5	6
Hum-History (BA) .....	8	4	6	12	5	7	5	14	12	12	6
Men .....	4	4	2	2	2	1		8	4	7	2
Women .....	4		4	10	3	6	5	6	8	5	4
Hum-Philosophy (BA) .....	1				1	2	2		2	2	1
Men .....					1	1	2			1	1
Women .....	1					1			2	1	
PROFESSIONAL STUDIES DIVISION ..	57	90	64	76	80	86	72	105	79	99	100
Men .....	32	51	28	35	36	43	30	40	33	46	41
Women .....	25	39	36	41	44	43	42	65	46	53	59
Business Administration (BA).....	38	57	41	48	50	52	43	71	45	50	60
Men .....	21	34	16	21	23	26	18	26	22	23	24
Women .....	17	23	25	27	27	26	25	45	23	27	36
Public Administration (BA) .....	19	33	23	28	30	34	29	34	34	49	40
Men .....	11	17	12	14	13	17	12	14	11	23	17
Women .....	8	16	11	14	17	17	17	20	23	26	23

TABLE 1 (cont.)

DIVISION AND PROGRAM	1985-86	1986-87	1987-88	1988-89	1989-90	1990-91	1991-92	1992-93	1993-94	1994-95	1995-96
SOCIAL SCIENCES DIVISION .....	28	38	32	27	32	47	47	63	58	66	78
Men .....	9	15	6	7	9	17	19	13	18	15	26
Women .....	19	23	26	20	23	30	28	50	40	51	52
Soc Sci-Anthropology (BA) .....							1	1	4	4	2
Men .....									2	1	
Women .....							1	1	2	3	2
Soc Sci-Economics (BA) .....	7	4	4	3	1	3	2	2	2	1	4
Men .....	4	4	2	2	1	2	2	1	2		2
Women .....	3		2	1		1		1		1	2
Soc Sci-Political Science (BA) .....	2	3	2	2	2	4	2	3	4	4	7
Men .....	2	1			2	2	1	1	4	1	5
Women .....		2	2	2		2	1	2		3	2
Soc Sci-Psychology (BA) .....	9	24	17	13	14	23	28	43	42	44	47
Men .....	1	7	4	2	3	7	9	7	9	11	12
Women .....	8	17	13	11	11	16	19	36	33	33	35
Soc Sci-Sociology (BA) .....	10	7	9	9	15	17	14	14	6	13	18
Men .....	2	3		3	3	6	7	4	1	2	7
Women .....	8	4	9	6	12	11	7	10	5	11	11

Note: In FY 1995-96, graduates numbered 191; 8 students earned two degrees.

1/ The 'Humanities' category has been added and encompasses degrees focusing on American, Asian, European, and Pacific Studies themes. These themes were reported in previous years under Hum-History.

Sources: Computer Report 1454B; University of Hawai'i - West O'ahu Student Services.

TABLE 2  
DEGREES EARNED, BY PROGRAM, GENDER, AND ETHNICITY  
UNIVERSITY OF HAWAI'I - WEST O'AHU  
JULY 1, 1995 TO JUNE 30, 1996

DIVISION, PROGRAM, AND GENDER	GRAND TOTAL	SUB-T ASIAN/ PACIFIC	ASIAN / PACIFIC ISLANDER								SUB-T CAU- CASIAN	CAUCASIAN		SUB-T OTHER	OTHER				
			JPN	CHN	KOR	HWN/ PT HA		PAC ISLE	OTH ASN	MIX A/P		CAU	PORT		AFR HISP	IND AM	MIX /AK BKGD	NO RESP	
						FIL	PT HA												
TOTAL .....	199	99	34	3	3	23	24	4	2	6	65	57	8	35	4	5	26		
Men .....	73	43	16	2	2	11	5	2	2	3	18	17	1	12	1	1	10		
Women .....	126	56	18	1	1	12	19	2		3	47	40	7	23	3	4	16		
HUMANITIES DIVISION .....	21	8	3			3		2			8	8		5	1	1	3		
Men .....	6	2				2					2	2		2			2		
Women .....	15	6	3			1		2			6	6		3	1	1	1		
Humanities (BA) 1/ .....	5	4	2					2			1	1							
Women .....	5	4	2					2			1	1							
Hum-English (BA) .....	9	2	1			1					2	2		5	1	1	3		
Men .....	3	1				1								2			2		
Women .....	6	1	1								2	2		3	1	1	1		
Hum-History (BA) .....	6	2				2					4	4							
Men .....	2	1				1					1	1							
Women .....	4	1				1					3	3							
Hum-Philosophy (BA) .....	1										1	1							
Men .....	1										1	1							
PROFESS STUDIES DIV .....	100	55	17	3	3	11	15	1	2	3	28	25	3	17	2	2	13		
Men .....	41	22	8	2	2	4	2	1	2	1	11	11		8	1		7		
Women .....	59	33	9	1	1	7	13			2	17	14	3	9	1	2	6		
Business Admin (BA) .....	60	31	13	2	3	5	6		1	1	20	17	3	9	2		7		
Men .....	24	14	7	1	2	1	2		1		7	7		3	1		2		
Women .....	36	17	6	1	1	4	4			1	13	10	3	6	1		5		
Public Admin (BA) .....	40	24	4	1		6	9	1	1	2	8	8		8		2	6		
Men .....	17	8	1	1		3	3	1	1	1	4	4		5			5		
Women .....	23	16	3			3	9			1	4	4		3		2	1		

TABLE 2 (cont.)

DIVISION, PROGRAM, AND GENDER	GRAND TOTAL	SUB-T ASIAN/ PACIFIC	ASIAN / PACIFIC ISLANDER								SUB-T CAU- CASIAN	CAUCASIAN		SUB-T OTHER	OTHER				
			JPN	CHN	KOR	HWN/ PT HA		PAC ISLE	OTH ASN	MIX A/P		CAU	PORT		HISP	AFR AM	IND / AK	MIX BKGD	NO RESP
						FIL	PT												
SOCIAL SCIENCES DIV .....	78	36	14				9	9	1		3	29	24	5	13	1	2		10
Men .....	26	19	8				5	3	1		2	5	4	1	2		1		1
Women .....	52	17	6				4	6			1	24	20	4	11	1	1		9
Soc Sci-Anthropology (BA) .....	2	1	1									1	1						
Women .....	2	1	1									1	1						
Soc Sci-Economics (BA) .....	4	2								1	1	1	1		1		1		
Men .....	2	1									1	1	1		1		1		
Women .....	2	1								1	1	1	1		1				
Soc Sci-Political Sci (BA) .....	7	4	2				1	1				2	1	1	1				1
Men .....	5	3	2				1					2	1	1					
Women .....	2	1						1							1				1
Soc Sci-Psychology (BA) .....	47	16	3				7	4			2	20	16	4	11	1	1		9
Men .....	12	9	3				4	1			1	2	2		1				1
Women .....	35	7					3	3			1	18	14	4	10	1	1		8
Soc Sci-Sociology (BA) .....	18	13	8				1	3	1			5	5						
Men .....	7	6	3					2	1			1	1						
Women .....	11	7	5				1	1				4	4						

1/ The 'Humanities' category has been added and encompasses degrees focusing on American, Asian, European, and Pacific Studies themes. These themes were reported in previous years under Hum-History.

Sources: Computer Report 1454B; University of Hawai'i - West O'ahu Student Services.