

ENROLLMENT PROJECTIONS
UNIVERSITY OF HAWAI‘I, COMMUNITY COLLEGES
FALL 2003 TO FALL 2009

Institutional Research Office

University of Hawai‘i

August 2003

File Reference: Management and Planning Support Folder, Projections

Reports available online at: <http://www.hawaii.edu/iro/maps.htm>

**ENROLLMENT PROJECTIONS
UNIVERSITY OF HAWAII COMMUNITY COLLEGES
FALL 2003 TO FALL 2009**

INTRODUCTION

This report presents information on projected headcount enrollment for the University of Hawai'i Community Colleges: Hawai'i, Honolulu, Kapi'olani, Kaua'i, Leeward, Maui, and Windward. The projections are statistical extrapolations of current trends in enrollment by program. They do not set enrollment targets and, in general, do not take into account planned or potential changes in campus policies or procedures. They should be considered as an extension into the future of current enrollment trends, and may be used as a foundation for further work in planning and budgeting.

The enrollment projections are based upon unduplicated headcounts of students enrolled in credit courses. Included are classified students enrolled in liberal arts or vocational programs as well as unclassified students. In addition, special students (concurrent students and early admits) are included for all years, both the historical and projected.

Historical data are included in the tables to facilitate comparison and analysis. They were extracted from student enrollment, academic crossover and course registration data files. Information on Hawai'i public high school seniors by school district was provided by the Department of Education for the State of Hawai'i.

METHODOLOGY

The projections are organized by registration status: first-time, transfer and continuing / returning. Within each registration status category, enrollment is broken out by program area: liberal arts, career and technical education and unclassified. For first-time and transfer students, breakout by program area is made using average distribution ratios. For continuing / returning students, breakout is made using average continuation rates.

The Fall 2003 projection report offers three projection series - high, middle and low - for each campus and for the UH Community College system. The values in the separate series were produced by varying the input values used in the model from among the range of available values. Otherwise, the model uses the same general methodology for all three series.

First-time student enrollment is divided into three sub-categories, as follows:

- (a) Hawai'i public high school graduates entering the UH Community Colleges in the fall semester immediately following graduation from high school are called direct entrants. Direct entrants are forecast for each campus by school district using historical average participation rates. These rates are applied to the annual high school senior enrollment forecast from the Hawai'i Department of Education to yield the number of direct entrants for each high school district.

- (b) Hawai'i private high school graduates entering the UH Community Colleges in the fall semester immediately following their graduation from high school, together with students entering within one year of graduation from either Hawai'i public or private high schools, are called recent entrants. Recent entrants are forecast for each campus using historical average ratios of recent to direct entrants.
- (c) All other first-time entrants, such as out-of-state graduates, those who completed high school via the General Education Development (GED) examination and non-high school graduates, are called other first-time students. Other first-time students are projected for each campus using historical average ratios of other first-time students to direct entrants.

Transfer student enrollment is forecast using one of two methods: for those campuses where transfer enrollment shows a distinct trend, a trend line is used; for those campuses where transfer enrollment does not show a trend, a historical average number is used.

Continuing / returning students are forecast for each campus using continuation rates. In this report, a continuation rate is the ratio of continuing / returning enrollment for a given program area to the previous fall semester's total enrollment for that same program area. Historical average continuation rates are applied to the total enrollment by program area, either historical or projected, to forecast the next year's continuing / returning enrollment.

In addition to the high, middle and low enrollment projection series for each campus, detailed tables are included which project headcount enrollment, student semester hours (SSH) offered, and full-time equivalent (FTE) course enrollment by program. These tables utilize Fall 2002 data plus the projected enrollments for Fall 2003 to Fall 2009 as input, then project the counts by program area using the Fall 2002 proportions across programs. Full-Time Equivalent (FTE) course enrollment has been calculated by dividing the forecast student semester hours offered by a constant (15). Headcount enrollment by attendance status for each campus is also provided. The distribution by attendance status is made using the Fall 2002 proportions.

Figure 1 illustrates the historical headcount enrollment at the UH Community Colleges from Fall 1992 to Fall 2002 and the projected enrollment from Fall 2003 to Fall 2009. Figure 2 provides an enrollment index to facilitate comparison with other University of Hawai'i units and campuses (Fall 2002 = 100). Figure 3 presents the high, middle and low projection series, while Figure 4 shows the historical enrollment for the UH Community College system from its founding through Fall 2002, with projected enrollment through 2009. A similar series of charts is provided for each campus.

In Fall 2002, the UH Community Colleges migrated to a new student registration system. Some of the apparent changes in the data, such as movement between the first-time and transfer registration status categories, may be due to this migration. In addition, in Fall 2002 there was a much higher than normal percentage of invalid records on various measures, such as previous college attended and program of study. These shifts, where noted, have been downplayed in these projections. Efforts to improve the quality of the data are ongoing.

ANALYSIS AND HIGHLIGHTS

- Total headcount enrollment for the University of Hawai'i Community College system increased 3.2% in Fall 2002, to reach 25,593 (Table 2 & Figure 1). Enrollment increased at five of the seven community college campuses in Fall 2002. Headcount enrollment is forecast (middle series) to increase 1.6% in Fall 2003 to 26,012, and to increase at an average annual rate of 1.4% through Fall 2009.
- The high projection series allows for a 4.4% increase in enrollment for Fall 2003, to 26,727, with continued growth through Fall 2009 at an average annual rate of 2.5%. The low series allows for a 2.5% decline in enrollment in Fall 2003, to 24,947, with enrollment more or less stable thereafter. The two alternate series provide for robust enrollment growth on the high side and no growth on the low side.
- Enrollment grew rapidly from 1965 through 1976, as new campuses were added to the UHCC system and as the "baby boom" generation entered college (Figure 4). Between 1976 and 1988 enrollment remained more or less flat, except for a surge in 1981-82. Beginning in Fall 1989, enrollment grew again, reaching a historical peak of 27,905 students in Fall 1994. Enrollment subsequently declined through Fall 2000, before increasing each of the last two fall semesters. The long-term trend since Fall 1975 has been mildly upward. The enrollment forecast roughly follows this long term-trend.
- Enrollment of Hawai'i public high school seniors for academic year 2002-03 is down 4.3% from a year ago, according to information from the Hawai'i Department of Education (Appendix A). If the going rates remain unchanged, the UH Community College campuses can expect lower numbers of direct entrants in Fall 2003. Enrollment of public high school seniors is forecast to grow again beginning academic year 2003-04, to reach 10,543 by 2008-09.
- In contrast to first-time students, transfers show distinct upward trends at a number of UH Community College campuses. Campuses with upward trends in transfer enrollment include Hawai'i CC, Kapi'olani CC, Maui CC and Windward CC. For these campuses, transfers have been forecast using trend lines. For the remaining campuses, transfers have been forecast using constants.

PROJECTIONS BY CAMPUS

Hawai'i Community College: Headcount enrollment at Hawai'i Community College increased 5.2% in Fall 2002, to 2,182 students (Table A2 & Figure A1). Overall, enrollment is now at about the same level as in Fall 1997. Although the outlook for direct entrants is not encouraging, transfer enrollment has posted a solid upward trend since Fall 1997. This growth in transfers is forecast to continue (middle series). If transfer enrollment does not grow, the outlook changes to modest decline in enrollment (low series). The most robust scenario (high series) combines continued transfer growth with higher than expected numbers of first-time students, along with improved student retention.

Honolulu Community College: Headcount enrollment at Honolulu Community College declined 3.8% in Fall 2002 to 4,478 students (Table B2 & Figure B1). The long-term enrollment profile shows some peaks and valleys, but overall enrollment has grown only slightly since Fall 1976 (Figure B4). First-time student enrollment dropped in Fall 2002, while transfer enrollment grew. However, at least some of this apparent movement in enrollment between registration status categories may be due to the migration to the new student registration system. Overall, transfer enrollment shows no distinct trend and has been forecast using a constant. The forecast (middle series) calls for slight enrollment growth through Fall 2006, with larger increases beginning in Fall 2007.

Kapi'olani Community College: Headcount enrollment at Kapi'olani Community College declined slightly (0.6%) in Fall 2002 to 7,041 students (Table C2 & Figure C1). There has been a modest but persistent decline in enrollment since Fall 1994 (Figure C4). However, an upward trend in transfers since Fall 1991 helps provide some growth to the overall enrollment forecast. Enrollment has been projected (middle series) to decline slightly in Fall 2003 and to grow thereafter at an average annual rate of just under 1.0%.

Kaua'i Community College: Headcount enrollment at Kaua'i Community College increased 3.3% in Fall 2002 to 1,224 students (Table D2 & Figure D1). This increase follows a 12.6% jump in enrollment in Fall 2001, and may certify the end of the long-term downward trend in enrollment since Hurricane Iniki in 1992 (Figure D4). First-time student enrollment grew 32% in Fall 2002, while transfer enrollment dropped 50%. However, as with Honolulu CC, at least some of this apparent movement may be due to the migration to the new student registration system. Public high school seniors for the Kaua'i district are forecast to grow 32% by academic year 2008-09. This growth gives the first-time student and overall enrollment forecasts some upward momentum. Transfers have been forecast using a constant. The middle series projection provides for a 2.4% increase in enrollment for Fall 2003, and continued annual growth of 2.4% through Fall 2009.

Leeward Community College: Headcount enrollment at Leeward Community College increased 6.4% in Fall 2002 to 5,918 students, the second consecutive semester of strong growth (Table E2 & Figure E1). However, when viewed historically, enrollment at Leeward CC has changed little since the early 1970s (Figure E4). The forecast (middle series) calls for a 2.4% increase in Fall 2003 and growth thereafter at an average annual rate of 1.5%.

Maui Community College: Headcount enrollment at Maui Community College increased 10.7% in Fall 2002 to 2,989 students (Table F2 & Figure F1). Although first-time enrollment has declined in recent years, transfer enrollment shows a pronounced upward trend since Fall 1994. Enrollment is forecast (middle series) to increase 4.1% in Fall 2003, and to continue to grow at an average annual rate of 2.4% through 2009. Maui CC shows the strongest long-term upward trend of any of the UH Community Colleges (Figure F4).

Windward Community College: Headcount enrollment at Windward Community College increased 13.3% in Fall 2002 to 1,761 students, the second consecutive fall semester of strong growth (Table G2 & Figure G1). Both first-time and transfer enrollment show pronounced upward trends since Fall 1997. These trends help to give the enrollment forecast upward momentum. Enrollment has been forecast (middle series) to increase 4.4% in Fall 2003, with annual growth averaging 2.5% through Fall 2009.

University of Hawai'i Community Colleges
Credit Students

Figure 1
Historical and Projected Headcount Enrollment

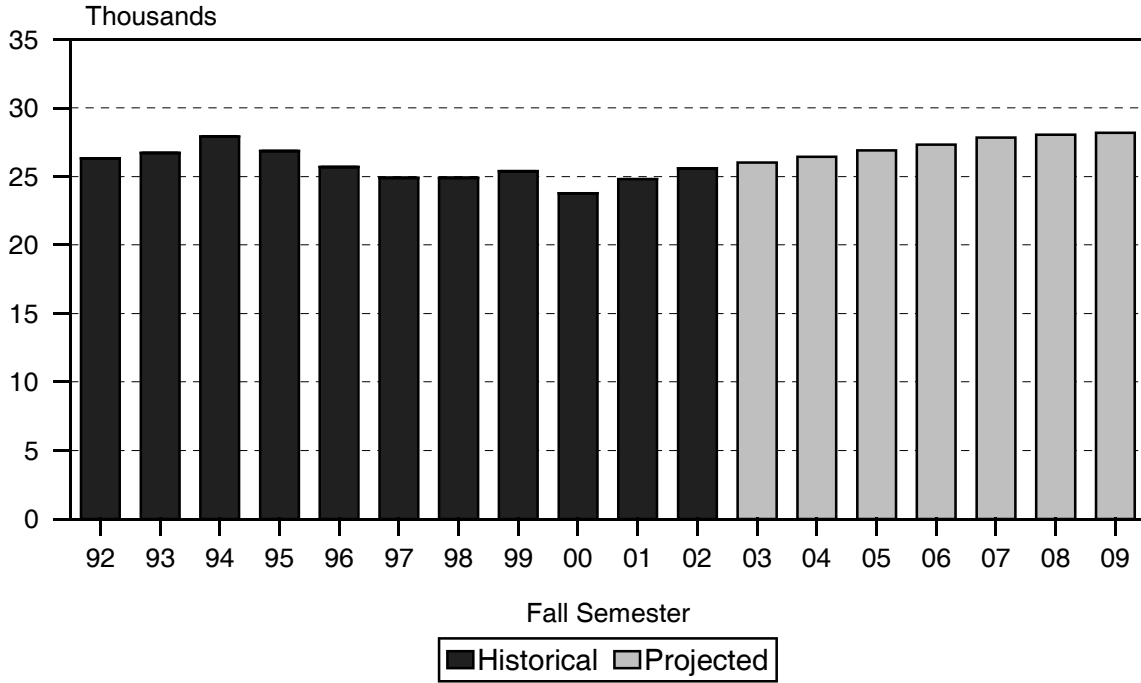
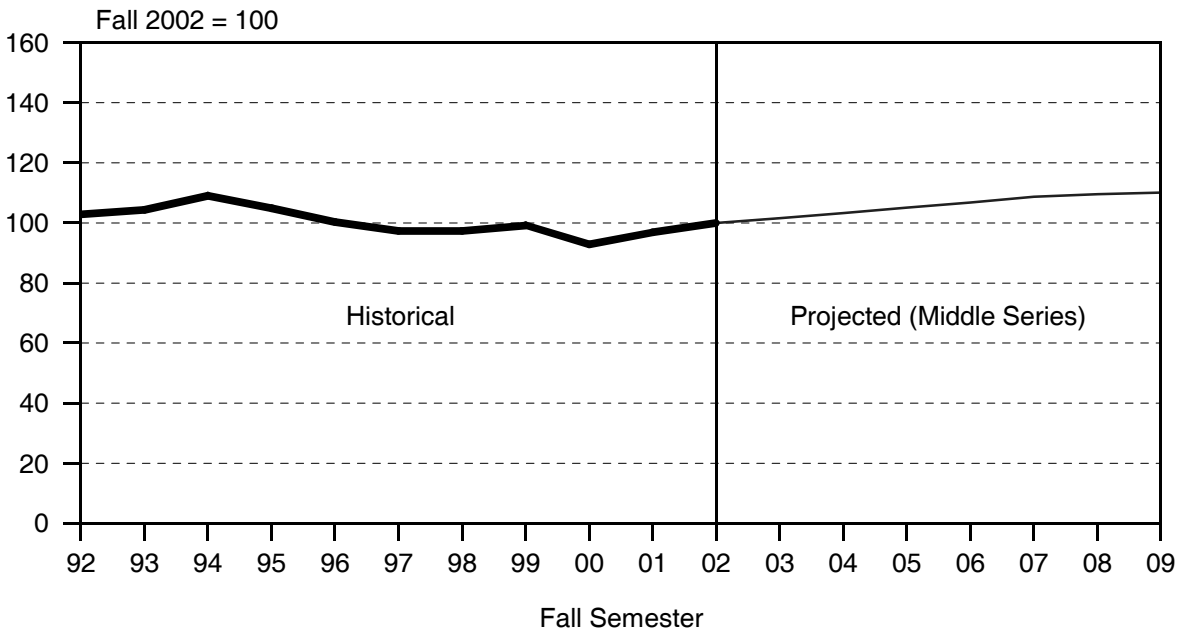


Figure 2
Enrollment Index



University of Hawai'i Community Colleges
Credit Students

Figure 3
High, Middle and Low Projection Series

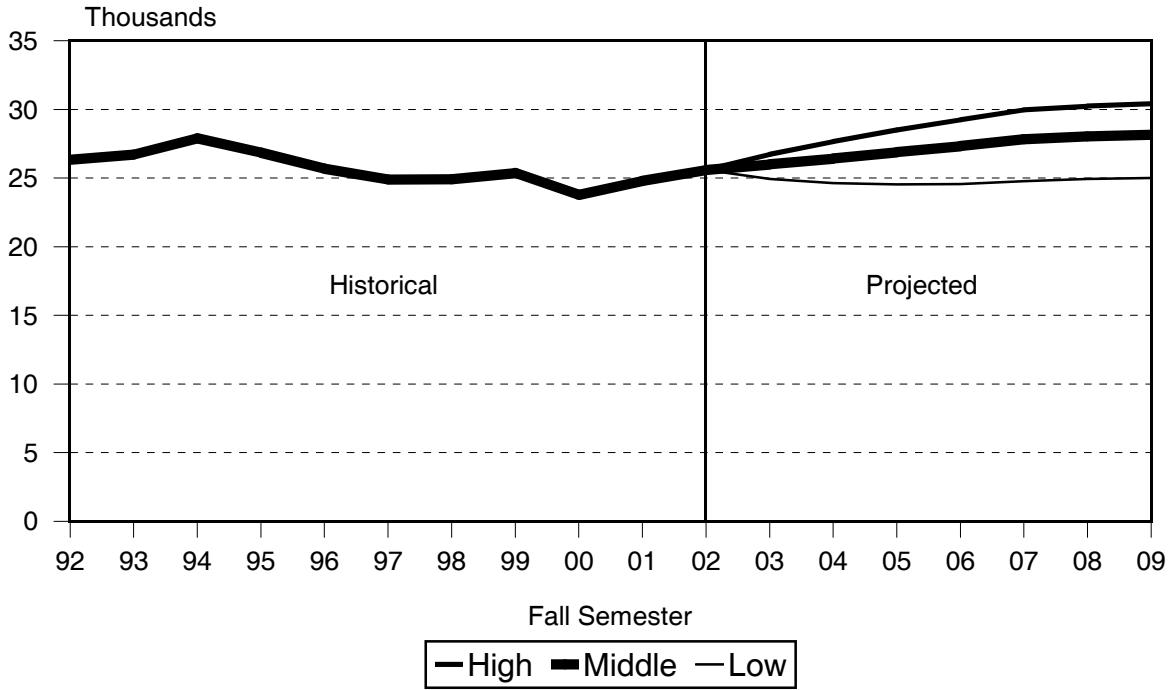


Figure 4
Historical and Projected Headcount Enrollment

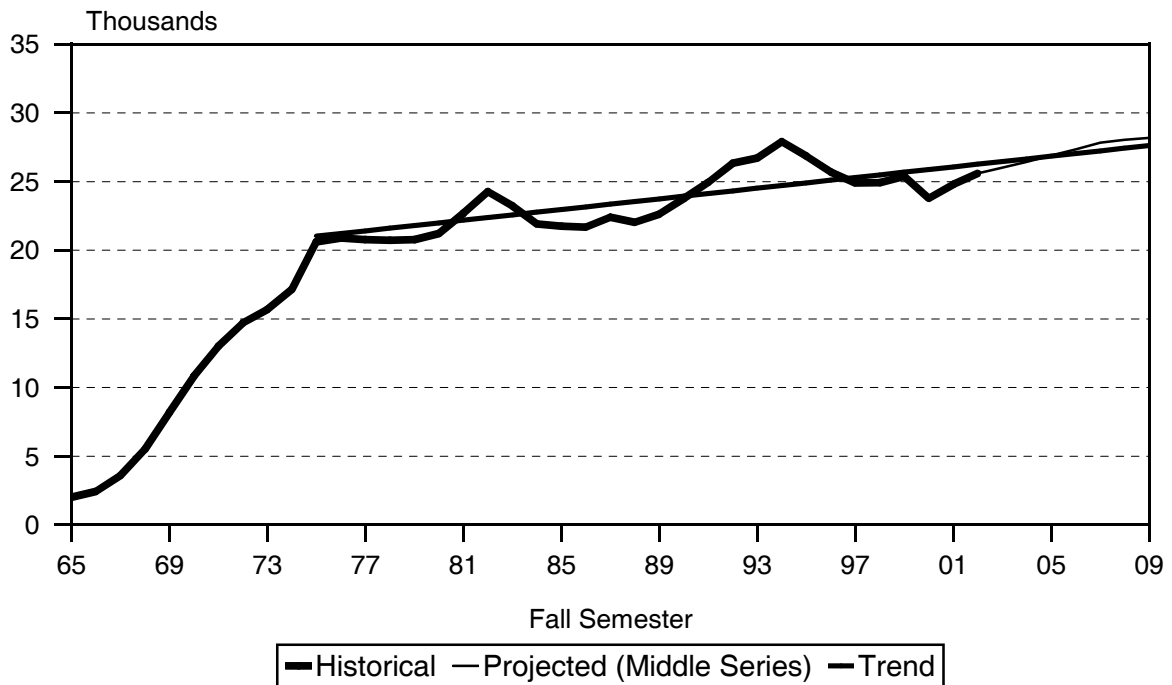


TABLE 1
HEADCOUNT ENROLLMENT OF CREDIT STUDENTS
LOW, MIDDLE AND HIGH PROJECTION SERIES
UNIVERSITY OF HAWAI'I COMMUNITY COLLEGES
FALL 2002 TO FALL 2009

PROJECTION SERIES	ACTUAL	PROJECTED						
	2002	2003	2004	2005	2006	2007	2008	2009
HIGH SERIES TOTAL	25,593	26,727	27,666	28,510	29,260	29,978	30,260	30,426
First Time	5,602	5,826	5,881	5,968	6,030	6,199	6,319	6,362
Transfer	3,758	3,956	4,080	4,203	4,328	4,375	4,390	4,406
Continuing / Returning	16,233	16,945	17,705	18,339	18,902	19,404	19,551	19,658
MIDDLE SERIES TOTAL 1/	25,593	26,012	26,443	26,891	27,337	27,827	28,052	28,182
First Time	5,602	5,409	5,475	5,551	5,616	5,779	5,890	5,935
Transfer	3,758	3,756	3,836	3,917	3,997	4,032	4,047	4,063
Continuing / Returning	16,233	16,847	17,132	17,423	17,724	18,016	18,115	18,184
LOW SERIES TOTAL	25,593	24,947	24,634	24,547	24,578	24,778	24,930	25,005
First Time	5,602	5,106	5,168	5,245	5,297	5,459	5,565	5,605
Transfer	3,758	3,468	3,505	3,544	3,581	3,600	3,600	3,600
Continuing / Returning	16,233	16,373	15,961	15,758	15,700	15,719	15,765	15,800

1/ The remaining tables in the report use the Middle Projection Series.

TABLE 2
HEADCOUNT ENROLLMENT OF CREDIT STUDENTS, BY REGISTRATION STATUS
MIDDLE PROJECTION SERIES
UNIVERSITY OF HAWAI'I, COMMUNITY COLLEGES
FALL 1996 TO FALL 2009

REGISTRATION STATUS AND PROGRAM AREA	HISTORICAL							PROJECTED						
	1996	1997	1998	1999	2000	2001	2002	2003	2004	2005	2006	2007	2008	2009
UH Community College Total	25,679	24,899	24,909	25,390	23,777	24,809	25,593	26,012	26,443	26,891	27,337	27,827	28,052	28,182
Liberal Arts 1/	14,745	13,916	13,713	14,073	13,324	13,675	14,446	14,690	14,948	15,206	15,472	15,754	15,893	15,968
Career & Technical Ed 1/	8,812	8,736	8,945	9,122	8,440	8,446	7,877	7,775	7,741	7,758	7,802	7,887	7,943	7,982
Unclassified	2,122	2,247	2,251	2,195	2,013	2,688	3,270	3,547	3,754	3,927	4,063	4,186	4,216	4,232
First-Time By HS Background	5,840	5,885	6,178	6,176	5,253	5,661	5,602	5,409	5,475	5,551	5,616	5,779	5,890	5,935
Direct From Hawai'i Public HS.....	2,496	2,491	2,665	2,767	2,478	2,338	2,405	2,266	2,322	2,382	2,432	2,558	2,648	2,684
Recent Hawai'i HS Graduates	720	733	716	744	645	708	682	644	654	670	685	722	743	752
Other First-Time Students	2,624	2,661	2,797	2,665	2,130	2,615	2,515	2,499	2,499	2,499	2,499	2,499	2,499	2,499
First-Time, By Program	5,840	5,885	6,178	6,176	5,253	5,661	5,602	5,409	5,475	5,551	5,616	5,779	5,890	5,935
Liberal Arts	3,332	3,263	3,353	3,416	2,901	3,128	3,288	3,073	3,122	3,161	3,210	3,304	3,374	3,400
Career & Technical Ed	1,874	1,904	2,101	2,059	1,779	1,771	1,518	1,588	1,601	1,622	1,634	1,679	1,708	1,723
Unclassified	634	718	724	701	573	762	796	748	752	768	772	796	808	812
Transfer	3,038	2,806	2,955	3,019	3,034	3,484	3,758	3,756	3,836	3,917	3,997	4,032	4,047	4,063
Liberal Arts	1,726	1,583	1,642	1,761	1,740	1,912	2,039	2,047	2,087	2,130	2,172	2,185	2,192	2,199
Career & Technical Ed	830	742	832	800	813	806	921	892	911	930	950	963	970	977
Unclassified	482	481	481	458	481	766	798	817	838	857	875	884	885	887
Continuing/Returning	16,801	16,208	15,776	16,195	15,490	15,664	16,233	16,847	17,132	17,423	17,724	18,016	18,115	18,184
Liberal Arts	9,687	9,070	8,718	8,896	8,683	8,635	9,119	9,570	9,739	9,915	10,090	10,265	10,327	10,369
Career & Technical Ed	6,108	6,090	6,012	6,263	5,848	5,869	5,438	5,295	5,229	5,206	5,218	5,245	5,265	5,282
Unclassified	1,006	1,048	1,046	1,036	959	1,160	1,676	1,982	2,164	2,302	2,416	2,506	2,523	2,533

1/ Industrial Ed at Honolulu CC moved from Liberal Studies to Public Services in Fall 2000. Totals for prior years have not been adjusted.

TABLE 3
ENROLLMENT INDEX: HEADCOUNT ENROLLMENT OF CREDIT STUDENTS
MIDDLE PROJECTION SERIES
UNIVERSITY OF HAWAI'I, COMMUNITY COLLEGES
FALL 1996 TO FALL 2009
(FALL 2002 = 100)

CAMPUS	HISTORICAL							PROJECTED						
	1996	1997	1998	1999	2000	2001	2002	2003	2004	2005	2006	2007	2008	2009
UH COMMUNITY COLLEGES	100	97	97	99	93	97	100	102	103	105	107	109	110	110
HAWAI'I CC	113	102	106	104	96	95	100	101	103	105	106	108	109	110
HONOLULU CC	91	89	92	106	100	104	100	101	102	102	103	104	105	106
KAPI'OLANI CC	105	102	103	103	96	101	100	100	100	101	102	103	104	105
KAUA'I CC	112	105	93	93	86	97	100	102	106	110	114	116	117	118
LEEWARD CC	102	100	97	94	89	94	100	102	105	106	108	110	111	111
MAUI CC	95	93	95	96	90	90	100	104	107	111	114	118	118	118
WINDWARD CC	86	86	85	86	82	88	100	104	109	112	116	118	119	119

TABLE 4
HEADCOUNT ENROLLMENT OF CREDIT STUDENTS, BY CAMPUS AND REGISTRATION STATUS
MIDDLE PROJECTION SERIES
UNIVERSITY OF HAWAI'I, COMMUNITY COLLEGES
FALL 1996 TO FALL 2009

CAMPUS AND REGISTRATION STATUS	HISTORICAL							PROJECTED						
	1996	1997	1998	1999	2000	2001	2002	2003	2004	2005	2006	2007	2008	2009
UHCC TOTAL	25,679	24,899	24,909	25,390	23,777	24,809	25,593	26,012	26,443	26,891	27,337	27,827	28,052	28,182
First Time	5,840	5,885	6,178	6,176	5,253	5,661	5,602	5,409	5,475	5,551	5,616	5,779	5,890	5,935
Transfer	3,038	2,806	2,955	3,019	3,034	3,484	3,758	3,756	3,836	3,917	3,997	4,032	4,047	4,063
Continuing / Returning	16,801	16,208	15,776	16,195	15,490	15,664	16,233	16,847	17,132	17,423	17,724	18,016	18,115	18,184
HAWAI'I CC	2,463	2,221	2,308	2,279	2,090	2,075	2,182	2,209	2,244	2,281	2,316	2,351	2,376	2,402
First Time	596	646	764	712	628	593	574	570	570	568	564	560	570	580
Transfer	175	125	154	167	182	169	222	224	240	255	271	287	302	318
Continuing / Returning	1,692	1,450	1,390	1,400	1,280	1,313	1,386	1,415	1,434	1,458	1,481	1,504	1,504	1,504
HONOLULU CC	4,090	3,970	4,124	4,769	4,487	4,653	4,478	4,518	4,550	4,584	4,621	4,673	4,718	4,759
First Time	894	953	1,014	1,080	887	958	813	856	858	869	882	910	919	929
Transfer	515	515	575	535	497	515	733	624	624	624	624	624	624	624
Continuing / Returning	2,681	2,502	2,535	3,154	3,103	3,180	2,932	3,038	3,068	3,091	3,115	3,139	3,175	3,206
KAPI'OLANI CC	7,373	7,189	7,236	7,254	6,760	7,081	7,041	7,019	7,029	7,084	7,169	7,268	7,331	7,396
First Time	1,307	1,303	1,408	1,351	1,171	1,298	1,199	1,151	1,153	1,177	1,200	1,247	1,247	1,274
Transfer	1,281	1,148	1,193	1,242	1,153	1,382	1,350	1,362	1,392	1,422	1,452	1,452	1,452	1,452
Continuing / Returning	4,785	4,738	4,635	4,661	4,436	4,401	4,492	4,506	4,484	4,485	4,517	4,569	4,632	4,670
KAUA'I CC	1,367	1,283	1,136	1,142	1,052	1,185	1,224	1,253	1,292	1,344	1,391	1,422	1,427	1,442
First Time	287	269	233	256	245	266	352	291	302	321	327	323	328	343
Transfer	129	110	99	119	108	174	87	123	123	123	123	123	123	123
Continuing / Returning	951	904	804	767	699	745	785	839	867	900	941	976	976	976
LEEWARD CC	6,014	5,936	5,765	5,570	5,259	5,562	5,918	6,062	6,203	6,298	6,396	6,509	6,587	6,580
First Time	1,332	1,338	1,288	1,290	1,084	1,270	1,370	1,292	1,340	1,342	1,378	1,427	1,505	1,498
Transfer	679	658	668	661	747	860	851	872	872	872	872	872	872	872
Continuing / Returning	4,003	3,940	3,809	3,619	3,428	3,432	3,697	3,898	3,991	4,084	4,146	4,210	4,210	4,210
MAUI CC	2,854	2,787	2,849	2,862	2,678	2,699	2,989	3,112	3,213	3,325	3,402	3,520	3,525	3,514
First Time	1,103	1,061	1,133	1,123	923	880	891	879	875	897	878	925	930	919
Transfer	81	54	64	112	147	157	202	221	239	258	276	295	295	295
Continuing / Returning	1,670	1,672	1,652	1,627	1,608	1,662	1,896	2,012	2,099	2,170	2,248	2,300	2,300	2,300
WINDWARD CC	1,518	1,513	1,491	1,514	1,451	1,554	1,761	1,839	1,912	1,975	2,042	2,084	2,088	2,089
First Time	321	315	338	364	315	396	403	370	377	377	387	387	391	392
Transfer	178	196	202	183	200	227	313	330	346	363	379	379	379	379
Continuing / Returning	1,019	1,002	951	967	936	931	1,045	1,139	1,189	1,235	1,276	1,318	1,318	1,318

TABLE 5
HEADCOUNT ENROLLMENT OF CREDIT STUDENTS, BY CAMPUS AND PROGRAM AREA
MIDDLE PROJECTION SERIES
UNIVERSITY OF HAWAI'I, COMMUNITY COLLEGES
FALL 1996 TO FALL 2009

CAMPUS AND PROGRAM AREA	HISTORICAL							PROJECTED						
	1996	1997	1998	1999	2000	2001	2002	2003	2004	2005	2006	2007	2008	2009
UHCC TOTAL	25,679	24,899	24,909	25,390	23,777	24,809	25,593	26,012	26,443	26,891	27,337	27,827	28,052	28,182
Liberal Arts 1/	14,745	13,916	13,713	14,073	13,324	13,675	14,446	14,690	14,948	15,206	15,472	15,754	15,893	15,968
Career & Technical Ed 1/	8,812	8,736	8,945	9,122	8,440	8,446	7,877	7,775	7,741	7,758	7,802	7,887	7,943	7,982
Unclassified	2,122	2,247	2,251	2,195	2,013	2,688	3,270	3,547	3,754	3,927	4,063	4,186	4,216	4,232
HAWAI'I CC	2,463	2,221	2,308	2,279	2,090	2,075	2,182	2,209	2,244	2,281	2,316	2,351	2,376	2,402
Liberal Arts	932	830	931	890	865	848	865	869	879	891	905	919	930	941
Career & Technical Ed	1,445	1,293	1,226	1,271	1,126	1,137	1,210	1,235	1,259	1,282	1,303	1,323	1,335	1,347
Unclassified	86	98	151	118	99	90	107	105	106	108	108	109	111	114
HONOLULU CC	4,090	3,970	4,124	4,769	4,487	4,653	4,478	4,518	4,550	4,584	4,621	4,673	4,718	4,759
Liberal Arts 1/	1,620	1,341	1,306	1,715	1,589	1,657	1,535	1,612	1,665	1,705	1,737	1,768	1,793	1,813
Career & Technical Ed 1/	2,300	2,283	2,439	2,751	2,624	2,681	2,586	2,562	2,547	2,542	2,546	2,564	2,582	2,601
Unclassified	170	346	379	303	274	315	357	344	338	337	338	341	343	345
KAPI'OLANI CC	7,373	7,189	7,236	7,254	6,760	7,081	7,041	7,019	7,029	7,084	7,169	7,268	7,331	7,396
Liberal Arts	4,875	4,527	4,419	4,535	4,276	4,343	4,325	4,277	4,263	4,287	4,334	4,396	4,436	4,478
Career & Technical Ed	1,970	2,171	2,340	2,296	2,135	2,068	1,878	1,802	1,760	1,743	1,745	1,755	1,762	1,772
Unclassified	528	491	477	423	349	670	838	940	1,006	1,054	1,090	1,117	1,133	1,146
KAUA'I CC	1,367	1,283	1,136	1,142	1,052	1,185	1,224	1,253	1,292	1,344	1,391	1,422	1,427	1,442
Liberal Arts	598	563	511	506	513	545	592	584	586	597	608	612	614	623
Career & Technical Ed	580	560	480	398	356	362	284	270	263	263	264	264	266	269
Unclassified	189	160	145	238	183	278	348	399	443	484	519	546	547	550
LEEWARD CC	6,014	5,936	5,765	5,570	5,259	5,562	5,918	6,062	6,203	6,298	6,396	6,509	6,587	6,580
Liberal Arts	4,235	4,191	4,112	3,991	3,779	3,958	4,312	4,422	4,532	4,608	4,685	4,774	4,831	4,826
Career & Technical Ed	1,310	1,279	1,264	1,167	1,078	1,112	1,062	1,065	1,076	1,083	1,094	1,110	1,125	1,124
Unclassified	469	466	389	412	402	492	544	575	595	607	617	625	631	630
MAUI CC	2,854	2,787	2,849	2,862	2,678	2,699	2,989	3,112	3,213	3,325	3,402	3,520	3,525	3,514
Liberal Arts	1,247	1,212	1,188	1,129	1,058	988	1,291	1,347	1,391	1,438	1,471	1,519	1,520	1,517
Career & Technical Ed	1,096	1,052	1,121	1,166	1,073	1,064	838	824	819	828	832	853	855	851
Unclassified	511	523	540	567	547	647	860	941	1,003	1,059	1,099	1,148	1,150	1,146
WINDWARD CC	1,518	1,513	1,491	1,514	1,451	1,554	1,761	1,839	1,912	1,975	2,042	2,084	2,088	2,089
Liberal Arts	1,238	1,252	1,246	1,307	1,244	1,336	1,526	1,579	1,632	1,680	1,732	1,766	1,769	1,770
Career & Technical Ed	111	98	75	73	48	22	19	17	17	17	18	18	18	18
Unclassified	169	163	170	134	159	196	216	243	263	278	292	300	301	301

1/ Industrial Ed at Honolulu CC moved from Liberal Studies to Public Services in Fall 2000. Totals for prior years have not been adjusted and may not tie to figures reported elsewhere.

TABLE 6
HEADCOUNT ENROLLMENT OF CREDIT STUDENTS, BY ATTENDANCE STATUS
MIDDLE PROJECTION SERIES
UNIVERSITY OF HAWAI'I, COMMUNITY COLLEGES
FALL 2002 TO FALL 2009

ATTENDANCE STATUS	ACTUAL	PROJECTED						
	2002	2003	2004	2005	2006	2007	2008	2009
UHCC TOTAL	25,593	26,012	26,443	26,891	27,337	27,827	28,052	28,182
Full-time	10,779	10,957	11,141	11,329	11,516	11,720	11,817	11,870
Part-time	14,814	15,055	15,302	15,562	15,821	16,107	16,235	16,312
HAWAI'I CC	2,182	2,209	2,244	2,281	2,316	2,351	2,376	2,402
Full-time	1,093	1,107	1,124	1,143	1,160	1,178	1,190	1,203
Part-time	1,089	1,102	1,120	1,138	1,156	1,173	1,186	1,199
HONOLULU CC	4,478	4,518	4,550	4,584	4,621	4,673	4,718	4,759
Full-time	1,714	1,729	1,742	1,755	1,769	1,789	1,806	1,822
Part-time	2,764	2,789	2,808	2,829	2,852	2,884	2,912	2,937
KAPI'OLANI CC	7,041	7,019	7,029	7,084	7,169	7,268	7,331	7,396
Full-time	2,878	2,869	2,873	2,896	2,930	2,971	2,997	3,023
Part-time	4,163	4,150	4,156	4,188	4,239	4,297	4,334	4,373
KAUA'I CC	1,224	1,253	1,292	1,344	1,391	1,422	1,427	1,442
Full-time	445	456	470	489	506	517	519	524
Part-time	779	797	822	855	885	905	908	918
LEEWARD CC	5,918	6,062	6,203	6,298	6,396	6,509	6,587	6,580
Full-time	2,769	2,836	2,902	2,947	2,993	3,046	3,082	3,079
Part-time	3,149	3,226	3,301	3,351	3,403	3,463	3,505	3,501
MAUI CC	2,989	3,112	3,213	3,325	3,402	3,520	3,525	3,514
Full-time	1,042	1,085	1,120	1,159	1,186	1,227	1,229	1,225
Part-time	1,947	2,027	2,093	2,166	2,216	2,293	2,296	2,289
WINDWARD CC	1,761	1,839	1,912	1,975	2,042	2,084	2,088	2,089
Full-time	838	875	910	940	972	992	994	994
Part-time	923	964	1,002	1,035	1,070	1,092	1,094	1,095

Note: Part-Time includes records with invalid data on attendance status.

APPENDIX A
HAWAI'I PUBLIC HIGH SCHOOL SENIORS, BY SCHOOL DISTRICT
1995-96 TO 2008-2009

SCHOOL DISTRICT	HISTORICAL 1/								PROJECTED 2/					
	1995-96	1996-97	1997-98	1998-99	1999-00	2000-01	2001-02	2002-03	2003-04	2004-05	2005-06	2006-07	2007-08	2008-09
TOTAL	9,671	9,033	9,459	9,523	9,698	9,232	9,457	9,052	9,234	9,447	9,596	10,053	10,415	10,543
Oahu Districts	6,285	5,899	6,130	6,117	6,247	5,860	6,064	5,751	5,922	6,006	6,237	6,564	6,829	6,902
Honolulu District	1,858	1,774	1,779	1,793	1,917	1,743	1,843	1,696	1,685	1,773	1,849	1,992	1,955	2,057
Central District	1,933	1,742	1,819	1,744	1,715	1,596	1,714	1,664	1,647	1,652	1,622	1,744	1,784	1,746
Leeward District	1,464	1,372	1,516	1,580	1,552	1,502	1,519	1,455	1,631	1,634	1,777	1,846	2,088	2,090
Windward District	1,030	1,011	1,016	1,000	1,063	1,019	988	936	959	947	989	982	1,002	1,009
Neighbor Island Districts	3,386	3,134	3,329	3,406	3,451	3,372	3,393	3,301	3,312	3,441	3,359	3,489	3,586	3,641
Hawai'i District	1,531	1,487	1,564	1,570	1,653	1,589	1,598	1,586	1,575	1,559	1,533	1,512	1,572	1,621
Maui District	1,127	1,004	1,105	1,168	1,185	1,186	1,184	1,172	1,155	1,234	1,157	1,327	1,346	1,305
Kaua'i District	728	643	660	668	613	597	611	543	582	648	669	650	668	715

1/ Department of Education for the State of Hawai'i.

2/ Department of Education, "Statewide Enrollment Projections, 2003-04 to 2008-09," April 2003.

Hawai'i Community College
Credit Students

Figure A1
Historical and Projected Headcount Enrollment

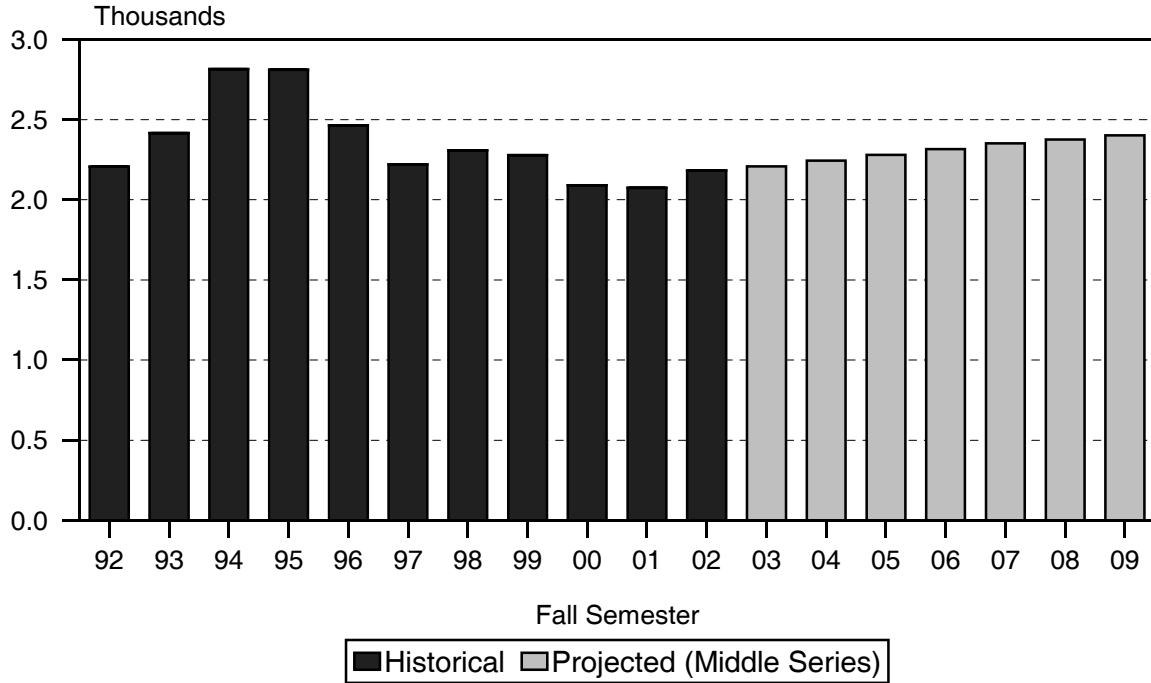
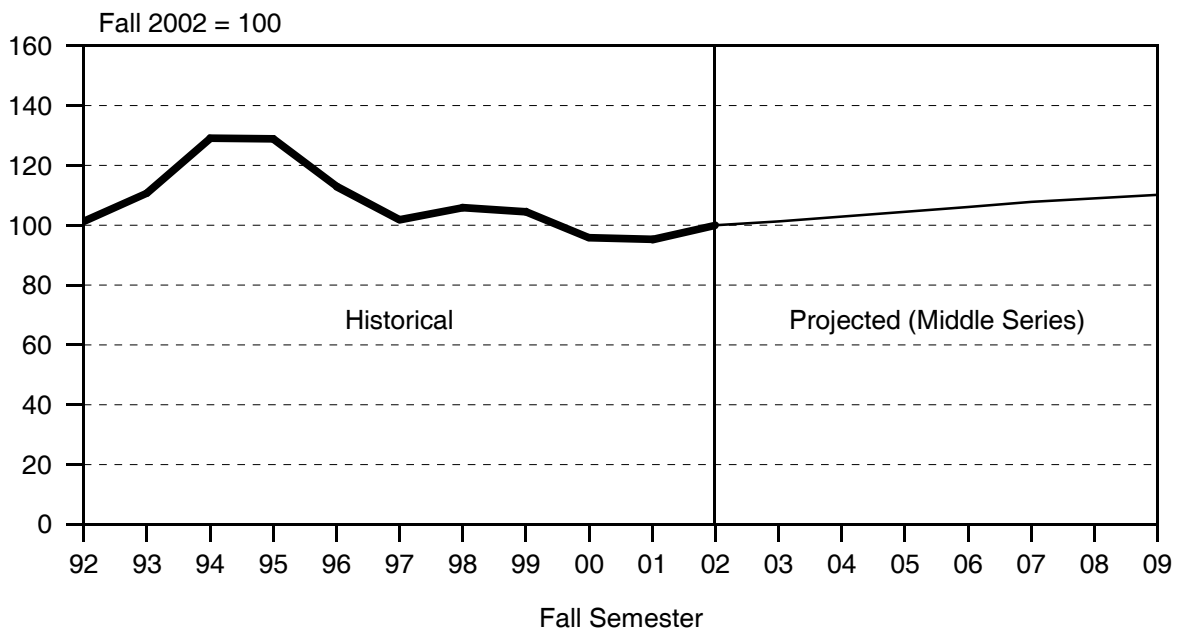


Figure A2
Enrollment Index



Hawai'i Community College
Credit Students

Figure A3
High, Middle and Low Projection Series

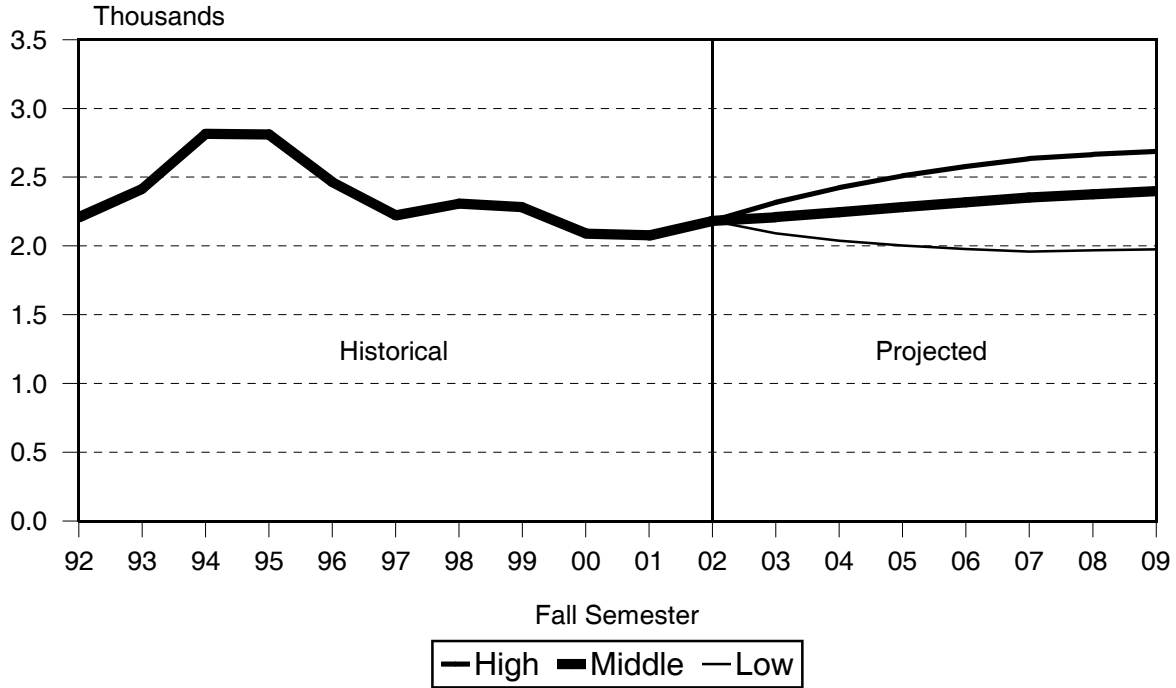


Figure A4
Historical and Projected Headcount Enrollment

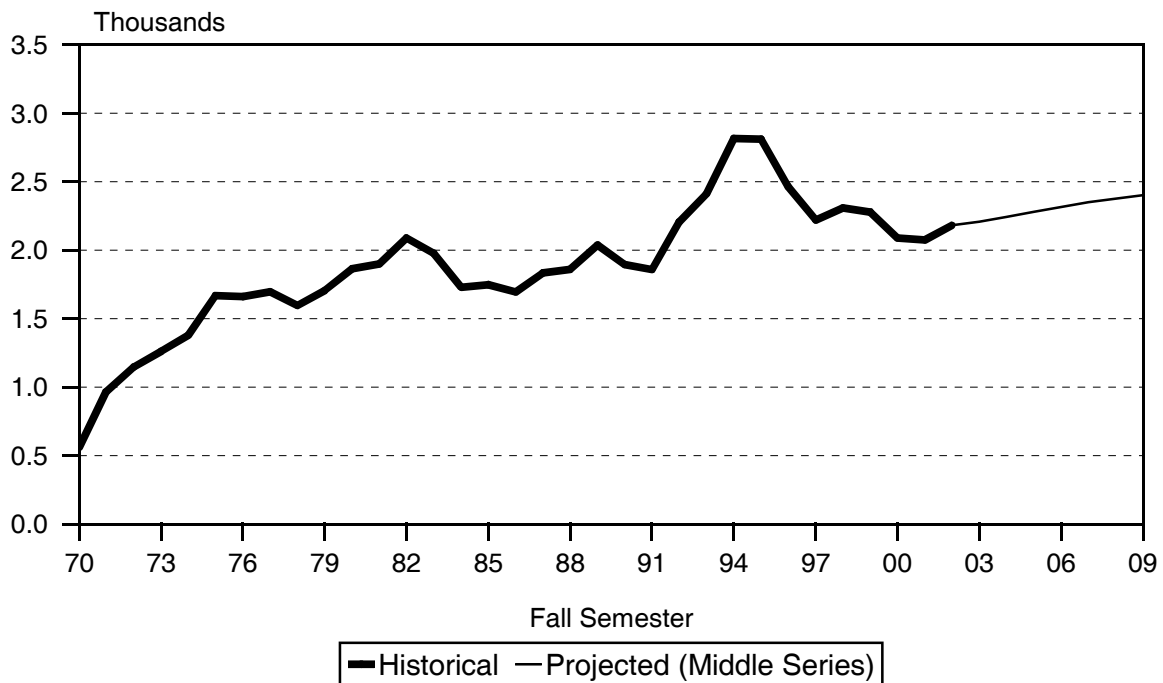


TABLE A1
HEADCOUNT ENROLLMENT OF CREDIT STUDENTS
LOW, MIDDLE AND HIGH PROJECTION SERIES
HAWAI'I COMMUNITY COLLEGE
FALL 2002 TO FALL 2009

PROJECTION SERIES	ACTUAL	PROJECTED						
	2002	2003	2004	2005	2006	2007	2008	2009
HIGH SERIES TOTAL	2,182	2,318	2,424	2,510	2,578	2,637	2,665	2,687
First Time	574	623	622	621	616	613	626	632
Transfer	222	237	253	268	284	300	315	331
Continuing / Returning	1,386	1,458	1,549	1,621	1,678	1,724	1,724	1,724
MIDDLE SERIES TOTAL 1/	2,182	2,209	2,244	2,281	2,316	2,351	2,376	2,402
First Time	574	570	570	568	564	560	570	580
Transfer	222	224	240	255	271	287	302	318
Continuing / Returning	1,386	1,415	1,434	1,458	1,481	1,504	1,504	1,504
LOW SERIES TOTAL	2,182	2,092	2,039	2,004	1,978	1,958	1,968	1,976
First Time	574	543	543	541	536	533	543	551
Transfer	222	196	196	196	196	196	196	196
Continuing / Returning	1,386	1,353	1,300	1,267	1,246	1,229	1,229	1,229

1/ The remaining tables in the report use the Middle Projection Series.

TABLE A2
HEADCOUNT ENROLLMENT OF CREDIT STUDENTS, BY REGISTRATION STATUS
MIDDLE PROJECTION SERIES
HAWAII COMMUNITY COLLEGE
FALL 1996 TO FALL 2009

REGISTRATION STATUS	HISTORICAL							PROJECTED						
	1996	1997	1998	1999	2000	2001	2002	2003	2004	2005	2006	2007	2008	2009
TOTAL	2,463	2,221	2,308	2,279	2,090	2,075	2,182	2,209	2,244	2,281	2,316	2,351	2,376	2,402
Liberal Arts	932	830	931	890	865	848	865	869	879	891	905	919	930	941
Career & Technical Ed	1,445	1,293	1,226	1,271	1,126	1,137	1,210	1,235	1,259	1,282	1,303	1,323	1,335	1,347
Unclassified	86	98	151	118	99	90	107	105	106	108	108	109	111	114
First-Time By HS Background	596	646	764	712	628	593	574	570	570	568	564	560	570	580
Direct From Hawai'i Public HS...	253	259	285	253	247	194	229	226	226	224	221	218	226	234
Recent Hawai'i HS Graduates ..	57	52	67	65	43	55	63	62	62	62	61	60	62	64
Other First-Time Students	286	335	412	394	338	344	282	282	282	282	282	282	282	282
First-Time, By Program	596	646	764	712	628	593	574	570	570	568	564	560	570	580
Liberal Arts	200	251	316	277	262	240	244	236	236	235	234	232	236	240
Career & Technical Ed	335	323	330	362	304	300	295	291	291	290	288	286	291	296
Unclassified	61	72	118	73	62	53	35	43	43	43	42	42	43	44
Transfer	175	125	154	167	182	169	222	224	240	255	271	287	302	318
Liberal Arts	86	66	75	74	86	80	99	103	110	117	125	132	139	146
Career & Technical Ed	82	51	68	72	82	78	103	104	111	118	125	133	140	147
Unclassified	7	8	11	21	14	11	20	17	19	20	21	22	23	25
Continuing / Returning	1,692	1,450	1,390	1,400	1,280	1,313	1,386	1,415	1,434	1,458	1,481	1,504	1,504	1,504
Liberal Arts	646	513	540	539	517	528	522	530	533	539	546	555	555	555
Career & Technical Ed	1,028	919	828	837	740	759	812	840	857	874	890	904	904	904
Unclassified	18	18	22	24	23	26	52	45	44	45	45	45	45	45

TABLE A3
HEADCOUNT ENROLLMENT, BY PROGRAM
MIDDLE PROJECTION SERIES
HAWAI'I COMMUNITY COLLEGE
FALL 2002 TO FALL 2009

PROGRAM	ACTUAL	PROJECTED						
	2002	2003	2004	2005	2006	2007	2008	2009
Total Students	2,182	2,209	2,244	2,281	2,316	2,351	2,376	2,402
General & Pre Prof Ed ..	865	869	879	891	905	919	930	941
Liberal Arts	865	869	879	891	905	919	930	941
Career & Technical Ed ..	1,210	1,235	1,259	1,282	1,303	1,323	1,335	1,347
Business	290	296	302	307	313	316	320	323
Food Services	70	71	73	74	75	77	77	78
Health Services	296	302	308	314	319	324	327	330
Public Services	224	229	233	237	241	245	247	249
Technology	330	337	343	350	355	361	364	367
Unclassified	107	105	106	108	108	109	111	114
Regular Unclassified ..	64	60	61	62	63	64	64	67
Special Students	43	45	45	46	45	45	47	47
Concurrent	24	25	25	26	25	25	26	26
Early Admit	19	20	20	20	20	20	21	21

TABLE A4
STUDENT SEMESTER HOURS OFFERED, BY PROGRAM
MIDDLE PROJECTION SERIES
HAWAI'I COMMUNITY COLLEGE
FALL 2002 TO FALL 2009

PROGRAM	ACTUAL	PROJECTED						
	2002	2003	2004	2005	2006	2007	2008	2009
Total	21,444	21,727	22,080	22,445	22,799	23,151	23,384	23,631
General Education	13,470	13,610	13,809	14,024	14,246	14,465	14,619	14,781
Humanities	7,668	7,745	7,854	7,975	8,101	8,225	8,314	8,408
Natural Sciences	3,575	3,619	3,676	3,735	3,792	3,851	3,892	3,933
Social Sciences	2,110	2,128	2,159	2,192	2,228	2,262	2,285	2,311
Other General Education .	117	118	120	122	125	127	128	129
Career & Technical Ed	7,974	8,117	8,271	8,421	8,553	8,686	8,765	8,850
Business	2,396	2,437	2,485	2,527	2,572	2,600	2,632	2,659
Food Services	696	705	724	735	745	764	764	775
Health Services	868	885	902	919	934	948	957	965
Public Services	1,281	1,301	1,321	1,343	1,364	1,387	1,399	1,413
Technology	2,733	2,789	2,839	2,897	2,938	2,987	3,013	3,038

TABLE A5
FULL-TIME EQUIVALENT COURSE ENROLLMENT SERVED, BY PROGRAM
MIDDLE PROJECTION SERIES
HAWAI'I COMMUNITY COLLEGE
FALL 2002 TO FALL 2009

PROGRAM	ACTUAL	PROJECTED						
	2002	2003	2004	2005	2006	2007	2008	2009
Total	1,428	1,448	1,472	1,496	1,520	1,542	1,558	1,576
General Education	896	907	921	935	950	964	974	986
Humanities	510	516	524	532	540	548	554	561
Natural Sciences	238	241	245	249	253	257	259	262
Social Sciences	140	142	144	146	149	151	152	154
Other General Education .	8	8	8	8	8	8	9	9
Career & Technical Ed	532	541	551	561	570	578	584	590
Business	160	162	166	168	171	173	175	177
Food Services	46	47	48	49	50	51	51	52
Health Services	58	59	60	61	62	63	64	64
Public Services	86	87	88	90	91	92	93	94
Technology	182	186	189	193	196	199	201	203

Honolulu Community College
Credit Students

Figure B1
Historical and Projected Headcount Enrollment

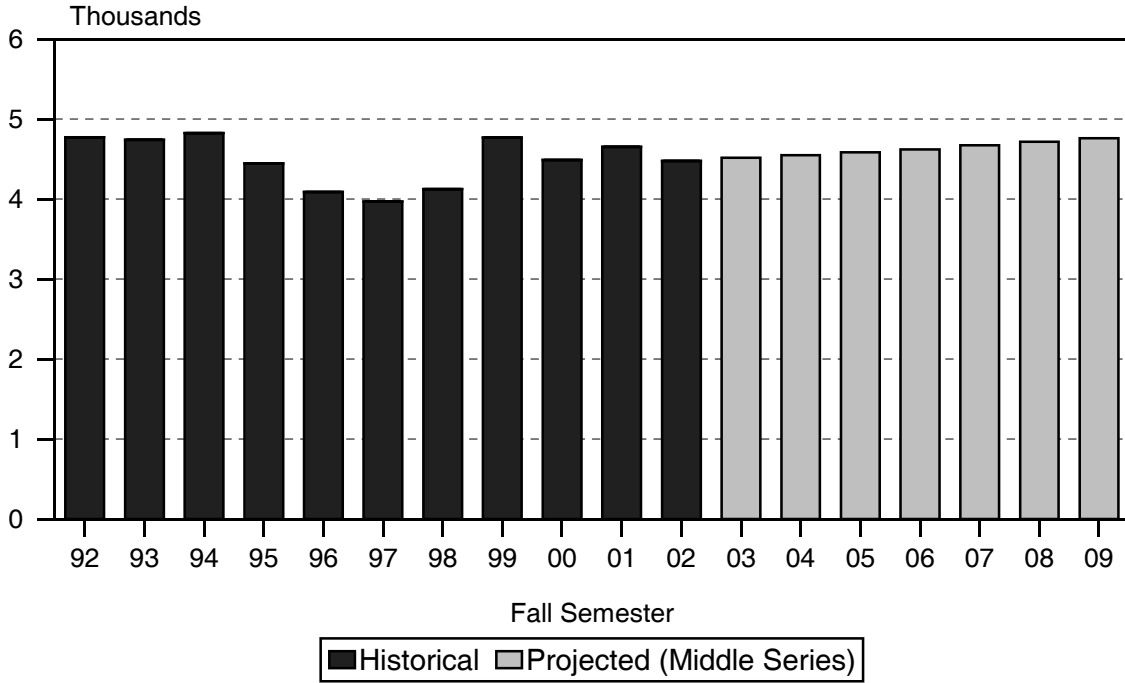
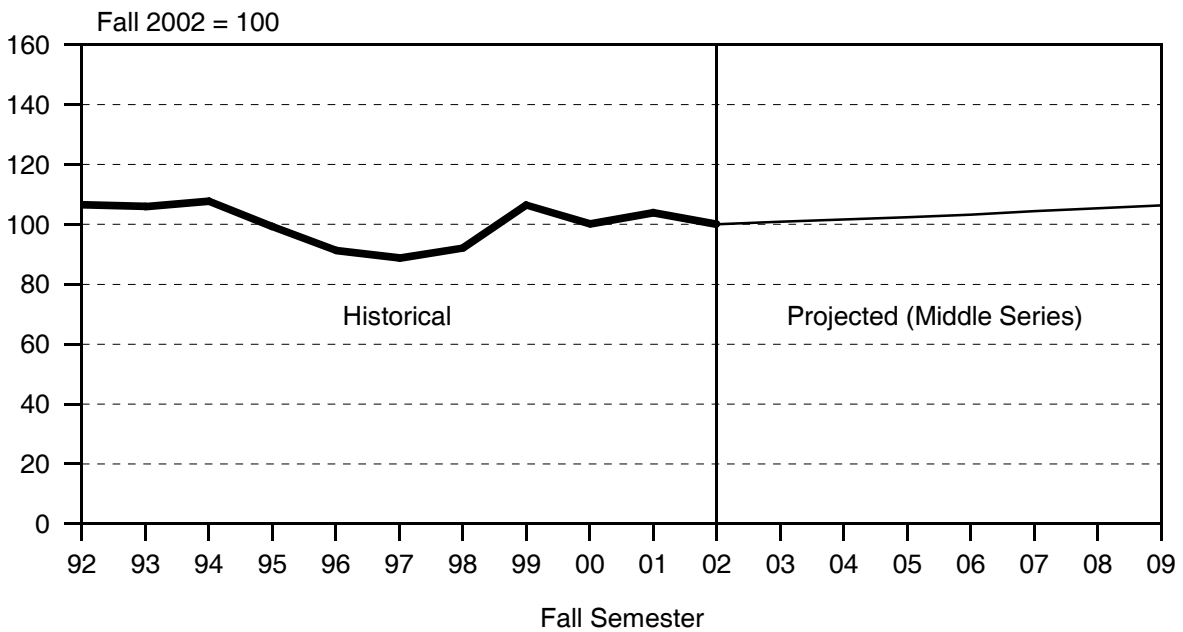


Figure B2
Enrollment Index



Honolulu Community College
Credit Students

Figure B3
High, Middle and Low Projection Series

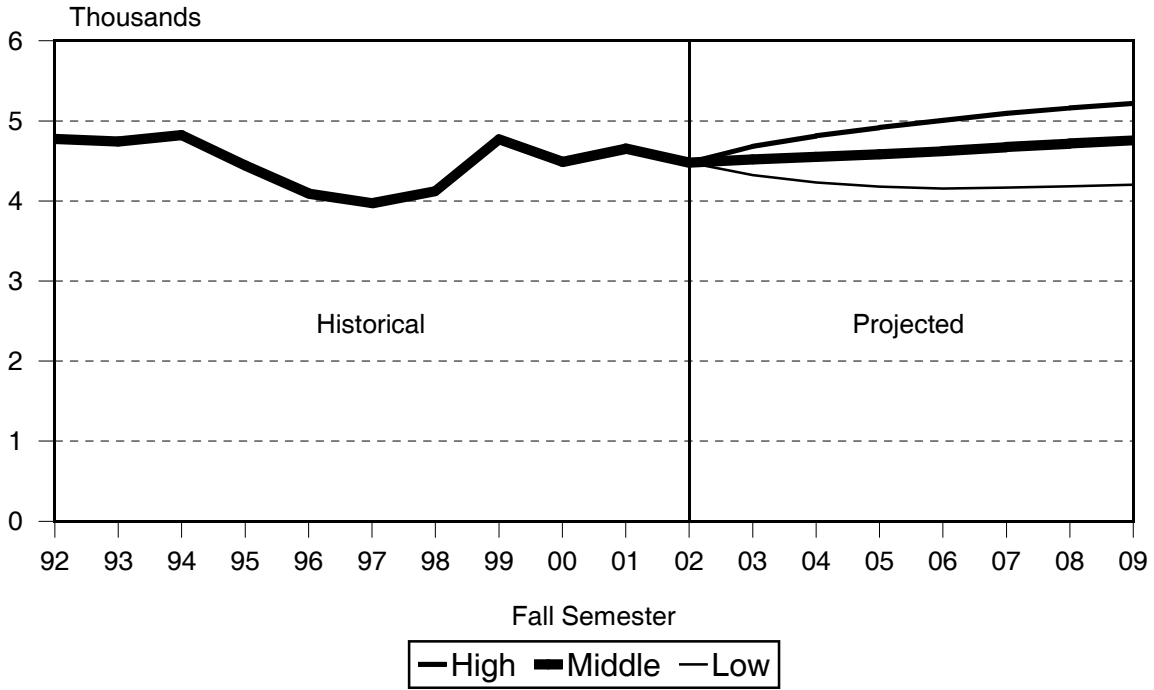


Figure B4
Historical and Projected Headcount Enrollment

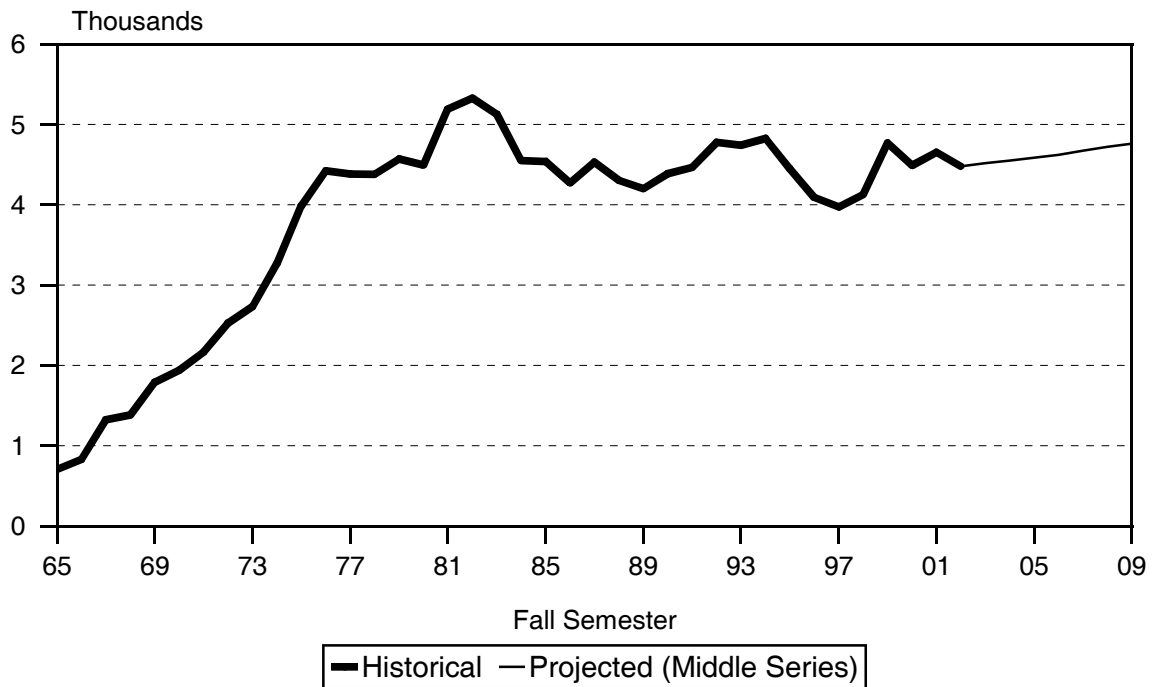


TABLE B1
HEADCOUNT ENROLLMENT OF CREDIT STUDENTS
LOW, MIDDLE AND HIGH PROJECTION SERIES
HONOLULU COMMUNITY COLLEGE
FALL 2002 TO FALL 2009

PROJECTION SERIES	ACTUAL	PROJECTED						
	2002	2003	2004	2005	2006	2007	2008	2009
HIGH SERIES TOTAL	4,478	4,681	4,814	4,920	5,007	5,094	5,164	5,219
First Time	813	910	907	921	935	963	973	981
Transfer	733	733	733	733	733	733	733	733
Continuing / Returning	2,932	3,038	3,174	3,266	3,339	3,398	3,458	3,505
Numerical Change (hidden)	-175	40	32	34	37	52	45	41
Percentage Change (hidden)	-3.8%	0.9%	0.7%	0.7%	0.8%	1.1%	1.0%	0.9%
MIDDLE SERIES TOTAL 1/	4,478	4,518	4,550	4,584	4,621	4,673	4,718	4,759
First Time	813	856	858	869	882	910	919	929
Transfer	733	624	624	624	624	624	624	624
Continuing / Returning	2,932	3,038	3,068	3,091	3,115	3,139	3,175	3,206
LOW SERIES TOTAL	4,478	4,324	4,231	4,180	4,156	4,168	4,185	4,203
First Time	813	788	795	807	818	846	856	864
Transfer	733	582	582	582	582	582	582	582
Continuing / Returning	2,932	2,954	2,854	2,791	2,756	2,740	2,747	2,757

1/ The remaining tables in the report use the Middle Projection Series.

TABLE B2
HEADCOUNT ENROLLMENT OF CREDIT STUDENTS, BY REGISTRATION STATUS
MIDDLE PROJECTION SERIES
HONOLULU COMMUNITY COLLEGE
FALL 1996 TO FALL 2009

REGISTRATION STATUS	HISTORICAL							PROJECTED						
	1996	1997	1998	1999	2000	2001	2002	2003	2004	2005	2006	2007	2008	2009
TOTAL 1/	4,090	3,970	4,124	4,769	4,487	4,653	4,478	4,518	4,550	4,584	4,621	4,673	4,718	4,759
Liberal Arts 2/	1,620	1,341	1,306	1,715	1,589	1,657	1,535	1,612	1,665	1,705	1,737	1,768	1,793	1,813
Career & Technical Ed 2/	2,300	2,283	2,439	2,751	2,624	2,681	2,586	2,562	2,547	2,542	2,546	2,564	2,582	2,601
Unclassified	170	346	379	303	274	315	357	344	338	337	338	341	343	345
First-Time By HS Background	894	953	1,014	1,080	887	958	813	856	858	869	882	910	919	929
Direct From Hawai'i Public HS...	375	360	428	415	377	305	349	326	330	339	349	371	378	386
Recent Hawai'i HS Graduates ..	87	94	89	111	108	107	93	90	88	90	93	99	101	103
Other First-Time Students	432	499	497	554	402	546	371	440	440	440	440	440	440	440
First-Time, By Program	894	953	1,014	1,080	887	958	813	856	858	869	882	910	919	929
Liberal Arts	306	267	273	342	278	291	307	292	292	296	300	310	313	316
Career & Technical Ed	538	552	623	638	530	554	435	476	478	484	491	507	512	518
Unclassified	50	134	118	100	79	113	71	88	88	89	91	93	94	95
Transfer	515	515	575	535	497	515	733	624	624	624	624	624	624	624
Liberal Arts	241	187	205	225	185	210	337	271	271	271	271	271	271	271
Career & Technical Ed	226	222	255	240	237	213	276	247	247	247	247	247	247	247
Unclassified	48	106	115	70	75	92	120	106	106	106	106	106	106	106
Continuing/Returning	2,681	2,502	2,535	3,154	3,103	3,180	2,932	3,038	3,068	3,091	3,115	3,139	3,175	3,206
Liberal Arts	1,073	887	828	1,148	1,126	1,156	891	1,049	1,102	1,138	1,166	1,187	1,209	1,226
Career & Technical Ed	1,536	1,509	1,561	1,873	1,857	1,914	1,875	1,839	1,822	1,811	1,808	1,810	1,823	1,836
Unclassified	72	106	146	133	120	110	166	150	144	142	141	142	143	144

1/ SOCAD (military continuing education) students added to general enrollment counts, beginning Fall 1999.

2/ Industrial Ed moved from Liberal Arts to Career & Tech Ed in Fall 2000. Numbers for prior years not revised.

TABLE B3
HEADCOUNT ENROLLMENT, BY PROGRAM
MIDDLE PROJECTION SERIES
HONOLULU COMMUNITY COLLEGE
FALL 2002 TO FALL 2009

PROGRAM	ACTUAL	PROJECTED						
	2002	2003	2004	2005	2006	2007	2008	2009
Total Students	4,478	4,518	4,550	4,584	4,621	4,673	4,718	4,759
General & Pre-Prof Ed ..	1,535	1,612	1,665	1,705	1,737	1,768	1,793	1,813
Liberal Arts	1,535	1,612	1,665	1,705	1,737	1,768	1,793	1,813
Career & Technical Ed ..	2,586	2,562	2,547	2,542	2,546	2,564	2,582	2,601
Public Services	779	772	767	766	767	772	778	784
Technology	1,807	1,790	1,780	1,776	1,779	1,792	1,804	1,817
Unclassified	357	344	338	337	338	341	343	345
Regular Unclassified ..	342	329	323	321	322	325	327	329
Special Students	15	15	15	16	16	16	16	16
Concurrent	4	4	4	4	4	4	4	4
Early Admit	11	11	11	12	12	12	12	12

TABLE B4
STUDENT SEMESTER HOURS OFFERED, BY PROGRAM
MIDDLE PROJECTION SERIES
HONOLULU COMMUNITY COLLEGE
FALL 2002 TO FALL 2009

PROGRAM	ACTUAL	PROJECTED						
	2002	2003	2004	2005	2006	2007	2008	2009
Total	39,945	40,275	40,533	40,805	41,119	41,565	41,958	42,318
General Education	22,892	23,645	23,956	24,227	24,489	24,802	25,067	25,301
Humanities	10,711	11,260	11,418	11,554	11,686	11,838	11,967	12,079
Natural Sciences	8,531	8,658	8,755	8,841	8,927	9,037	9,129	9,212
Social Sciences	3,533	3,611	3,667	3,716	3,760	3,810	3,853	3,891
Other General Education	117	116	116	116	116	117	118	119
Career & Technical Ed	17,053	16,630	16,577	16,578	16,630	16,763	16,891	17,017
Business	1,750	1,770	1,784	1,800	1,816	1,836	1,854	1,870
Health Services	276	283	285	290	293	299	302	304
Public Services	4,175	4,153	4,139	4,141	4,154	4,185	4,221	4,253
Technology	9,946	9,526	9,476	9,456	9,475	9,544	9,609	9,679
Other Vocational	906	898	893	891	892	899	905	911

TABLE B5
FULL-TIME EQUIVALENT COURSE ENROLLMENT SERVED, BY PROGRAM
MIDDLE PROJECTION SERIES
HONOLULU COMMUNITY COLLEGE
FALL 2002 TO FALL 2009

PROGRAM	ACTUAL	PROJECTED						
	2002	2003	2004	2005	2006	2007	2008	2009
Total	2,656	2,686	2,703	2,719	2,742	2,770	2,798	2,821
General Education	1,522	1,577	1,597	1,615	1,633	1,653	1,672	1,686
Humanities	712	751	761	770	779	789	798	805
Natural Sciences	568	577	584	589	595	602	609	614
Social Sciences	234	241	244	248	251	254	257	259
Other General Education	8	8	8	8	8	8	8	8
Career & Technical Ed	1,134	1,109	1,106	1,104	1,109	1,117	1,126	1,135
Business	116	118	119	120	121	122	124	125
Health Services	18	19	19	19	20	20	20	20
Public Services	278	277	276	276	277	279	281	284
Technology	662	635	632	630	632	636	641	645
Other Vocational	60	60	60	59	59	60	60	61

Kapi'olani Community College
Credit Students

Figure C1
Historical and Projected Headcount Enrollment

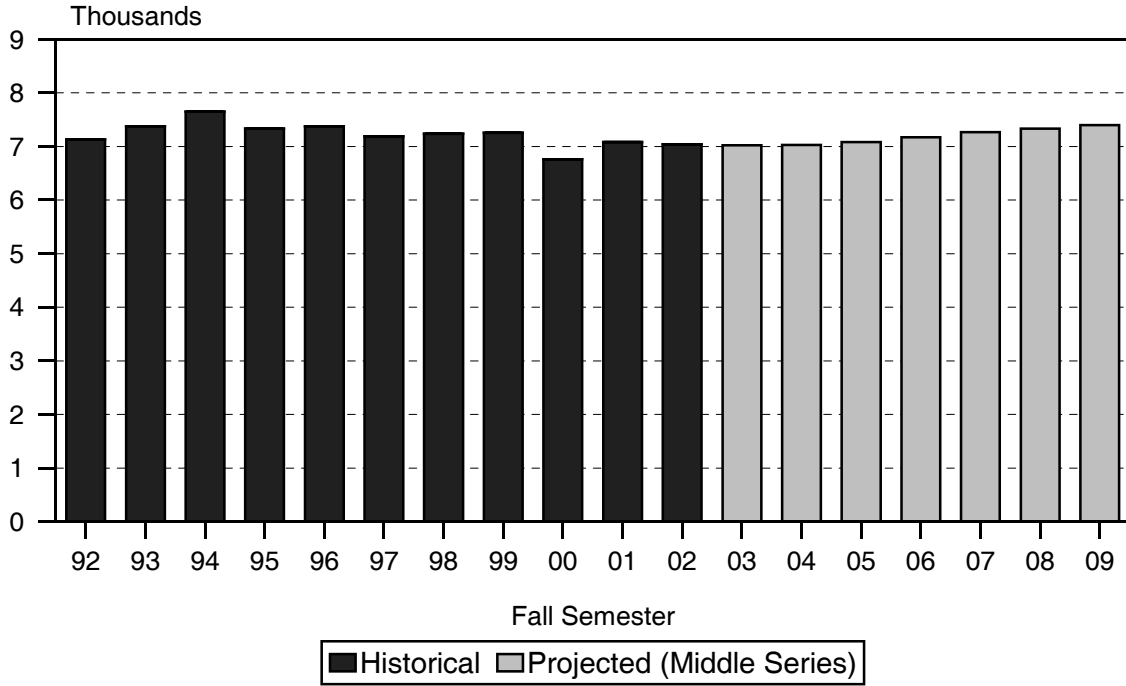
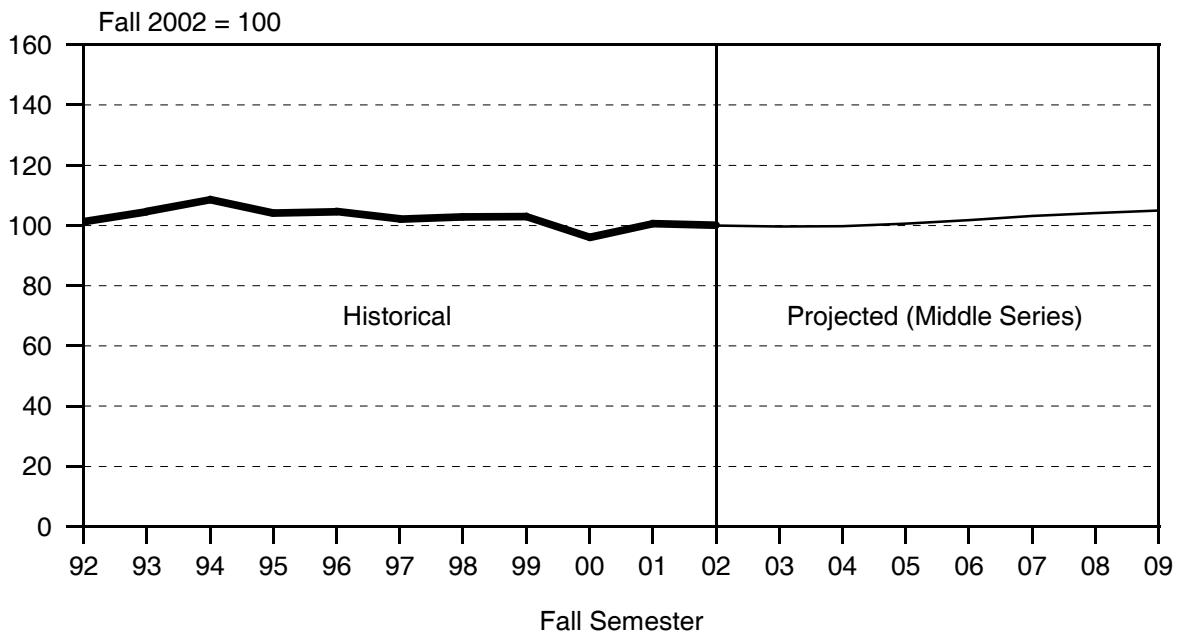


Figure C2
Enrollment Index



Kapi'olani Community College
Credit Students

Figure C3
High, Middle and Low Projection Series

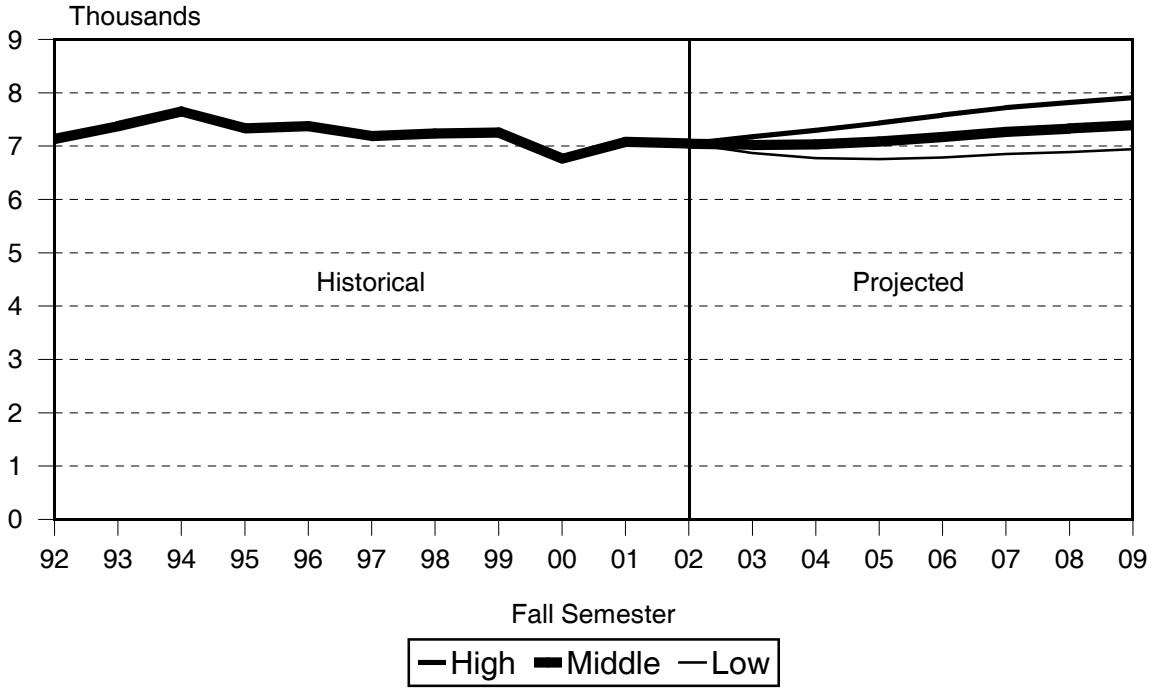


Figure C4
Historical and Projected Headcount Enrollment

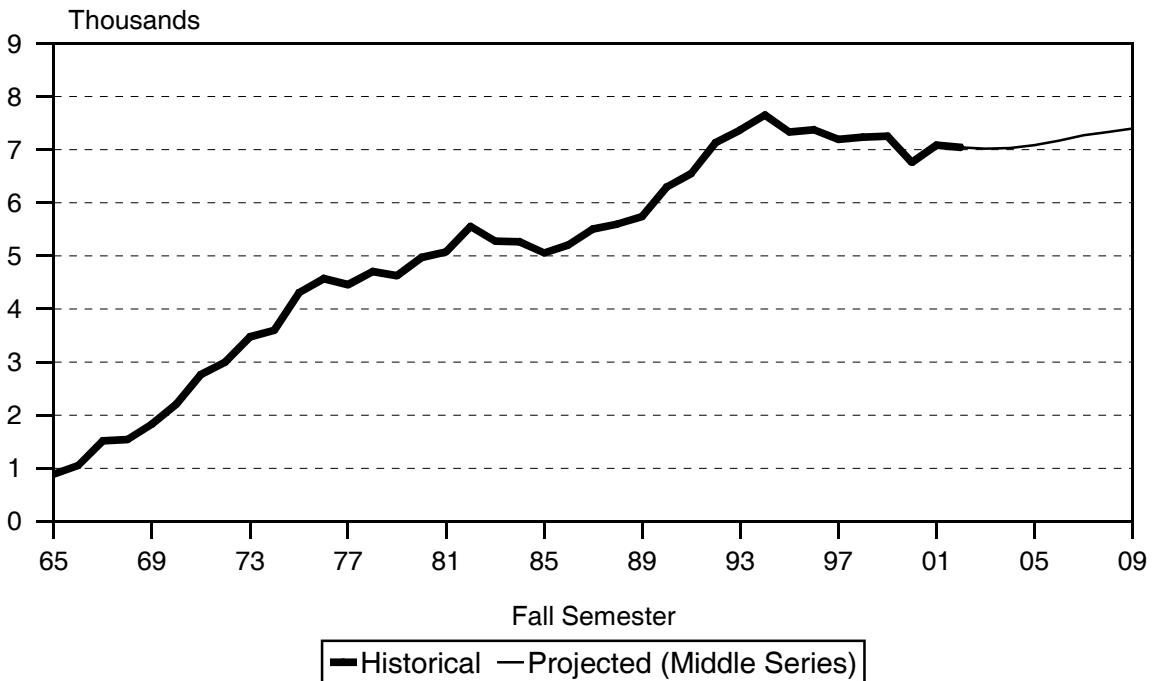


TABLE C1
HEADCOUNT ENROLLMENT OF CREDIT STUDENTS
LOW, MIDDLE AND HIGH PROJECTION SERIES
KAPI'OLANI COMMUNITY COLLEGE
FALL 2002 TO FALL 2009

PROJECTION SERIES	ACTUAL	PROJECTED						
	2002	2003	2004	2005	2006	2007	2008	2009
HIGH SERIES TOTAL	7,041	7,178	7,297	7,432	7,581	7,721	7,815	7,905
First Time	1,199	1,274	1,279	1,306	1,335	1,381	1,388	1,418
Transfer	1,350	1,398	1,434	1,471	1,508	1,508	1,508	1,508
Continuing / Returning	4,492	4,506	4,584	4,655	4,738	4,832	4,919	4,979
MIDDLE SERIES TOTAL 1/	7,041	7,019	7,029	7,084	7,169	7,268	7,331	7,396
First Time	1,199	1,151	1,153	1,177	1,200	1,247	1,247	1,274
Transfer	1,350	1,362	1,392	1,422	1,452	1,452	1,452	1,452
Continuing / Returning	4,492	4,506	4,484	4,485	4,517	4,569	4,632	4,670
LOW SERIES TOTAL	7,041	6,869	6,775	6,758	6,787	6,851	6,890	6,942
First Time	1,199	1,092	1,093	1,118	1,141	1,187	1,187	1,214
Transfer	1,350	1,331	1,350	1,370	1,389	1,389	1,389	1,389
Continuing / Returning	4,492	4,446	4,332	4,270	4,257	4,275	4,314	4,339

1/ The remaining tables in the report use the Middle Projection Series.

TABLE C2
HEADCOUNT ENROLLMENT OF CREDIT STUDENTS, BY REGISTRATION STATUS
MIDDLE PROJECTION SERIES
KAPI'OLANI COMMUNITY COLLEGE
FALL 1996 TO FALL 2009

REGISTRATION STATUS	HISTORICAL							PROJECTED						
	1996	1997	1998	1999	2000	2001	2002	2003	2004	2005	2006	2007	2008	2009
TOTAL	7,373	7,189	7,236	7,254	6,760	7,081	7,041	7,019	7,029	7,084	7,169	7,268	7,331	7,396
Liberal Arts	4,875	4,527	4,419	4,535	4,276	4,343	4,325	4,277	4,263	4,287	4,334	4,396	4,436	4,478
Career & Technical Ed	1,970	2,171	2,340	2,296	2,135	2,068	1,878	1,802	1,760	1,743	1,745	1,755	1,762	1,772
Unclassified	528	491	477	423	349	670	838	940	1,006	1,054	1,090	1,117	1,133	1,146
First-Time By HS Background	1,307	1,303	1,408	1,351	1,171	1,298	1,199	1,151	1,153	1,177	1,200	1,247	1,247	1,274
Direct From Hawai'i Public HS ..	605	611	662	738	581	571	514	479	480	498	515	549	549	569
Recent Hawai'i HS Graduates ..	222	261	242	238	202	216	186	173	174	180	186	199	199	206
Other First-Time Students	480	431	504	375	388	511	499	499	499	499	499	499	499	499
First-Time, By Program	1,307	1,303	1,408	1,351	1,171	1,298	1,199	1,151	1,153	1,177	1,200	1,247	1,247	1,274
Liberal Arts	968	913	968	948	812	852	792	758	759	776	790	822	822	839
Career & Technical Ed	271	321	381	322	302	292	208	229	230	234	239	248	248	254
Unclassified	68	69	59	81	57	154	199	164	164	167	171	177	177	181
Transfer	1,281	1,148	1,193	1,242	1,153	1,382	1,350	1,362	1,392	1,422	1,452	1,452	1,452	1,452
Liberal Arts	754	679	716	800	746	796	691	741	757	773	790	790	790	790
Career & Technical Ed	318	310	327	311	292	293	364	328	335	342	350	350	350	350
Unclassified	209	159	150	131	115	293	295	293	300	307	312	312	312	312
Continuing/Returning	4,785	4,738	4,635	4,661	4,436	4,401	4,492	4,506	4,484	4,485	4,517	4,569	4,632	4,670
Liberal Arts	3,153	2,935	2,735	2,787	2,718	2,695	2,842	2,778	2,747	2,738	2,754	2,784	2,824	2,849
Career & Technical Ed	1,381	1,540	1,632	1,663	1,541	1,483	1,306	1,245	1,195	1,167	1,156	1,157	1,164	1,168
Unclassified	251	263	268	211	177	223	344	483	542	580	607	628	644	653

TABLE C3
HEADCOUNT ENROLLMENT, BY PROGRAM
MIDDLE PROJECTION SERIES
KAPI'OLANI COMMUNITY COLLEGE
FALL 2002 TO FALL 2009

PROGRAM	ACTUAL	PROJECTED						
	2002	2003	2004	2005	2006	2007	2008	2009
Total Students	7,041	7,019	7,029	7,084	7,169	7,268	7,331	7,396
General & Pre-Prof Ed ..	4,325	4,277	4,263	4,287	4,334	4,396	4,436	4,478
Liberal Arts	4,325	4,277	4,263	4,287	4,334	4,396	4,436	4,478
Career & Technical Ed ..	1,878	1,802	1,760	1,743	1,745	1,755	1,762	1,772
Business	853	819	800	792	792	797	801	805
Food Services	439	421	411	407	408	410	412	414
Health Services	413	396	387	383	384	386	387	390
Public Services	173	166	162	161	161	162	162	163
Unclassified	838	940	1,006	1,054	1,090	1,117	1,133	1,146
Regular Unclassified ..	803	911	977	1,025	1,060	1,086	1,102	1,114
Special Students	35	29	29	29	30	31	31	32
Early Admit	35	29	29	29	30	31	31	32

TABLE C4
 STUDENT SEMESTER HOURS OFFERED, BY PROGRAM
 MIDDLE PROJECTION SERIES
 KAPI'OLANI COMMUNITY COLLEGE
 FALL 2002 TO FALL 2009

PROGRAM	ACTUAL	PROJECTED						
	2002	2003	2004	2005	2006	2007	2008	2009
Total	63,381	62,909	62,816	63,188	63,876	64,723	65,267	65,833
General Education	46,869	46,834	46,964	47,389	47,988	48,698	49,151	49,602
Humanities	25,965	25,925	25,985	26,212	26,540	26,929	27,178	27,426
Natural Sciences	14,542	14,553	14,604	14,745	14,935	15,158	15,300	15,442
Social Sciences	6,086	6,082	6,101	6,157	6,235	6,329	6,387	6,446
Other General Educ	276	274	274	275	278	282	286	288
Career & Technical Ed	16,512	16,075	15,852	15,799	15,888	16,025	16,116	16,231
Business	5,703	5,600	5,551	5,554	5,594	5,657	5,699	5,741
Food Serv & Hosp Ed	4,515	4,354	4,266	4,234	4,247	4,274	4,297	4,321
Health Services	5,418	5,278	5,211	5,192	5,227	5,269	5,295	5,338
Public Services	876	843	824	819	820	825	825	831

TABLE C5
 FULL-TIME EQUIVALENT COURSE ENROLLMENT SERVED, BY PROGRAM
 MIDDLE PROJECTION SERIES
 KAPI'OLANI COMMUNITY COLLEGE
 FALL 2002 TO FALL 2009

PROGRAM	ACTUAL	PROJECTED						
	2002	2003	2004	2005	2006	2007	2008	2009
Total	4,225	4,192	4,187	4,211	4,259	4,315	4,351	4,388
General Education	3,124	3,121	3,131	3,158	3,200	3,247	3,277	3,306
Humanities	1,730	1,728	1,732	1,747	1,769	1,795	1,812	1,828
Natural Sciences	970	970	974	983	996	1,011	1,020	1,029
Social Sciences	405	405	407	410	416	422	426	430
Other General Educ	19	18	18	18	19	19	19	19
Career & Technical Ed	1,101	1,071	1,056	1,053	1,059	1,068	1,074	1,082
Business	380	373	370	370	373	377	380	383
Food Serv & Hosp Ed	301	290	284	282	283	285	286	288
Health Services	362	352	347	346	348	351	353	356
Public Services	58	56	55	55	55	55	55	55

Kaua'i Community College
Credit Students

Figure D1
Historical and Projected Headcount Enrollment

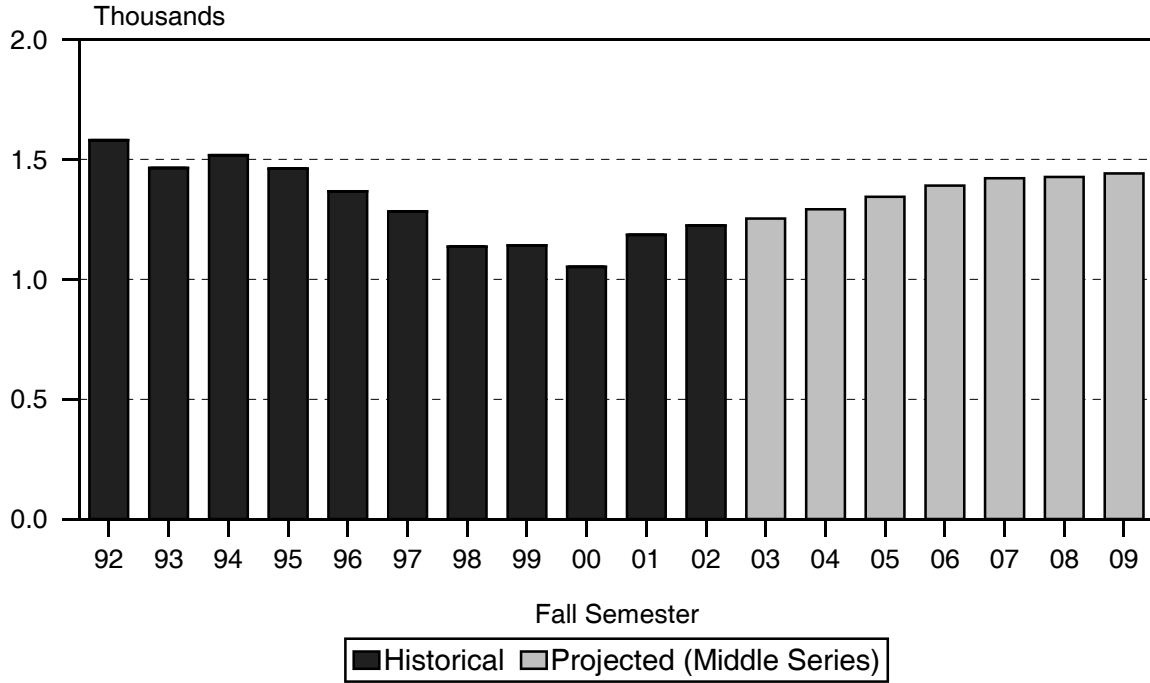
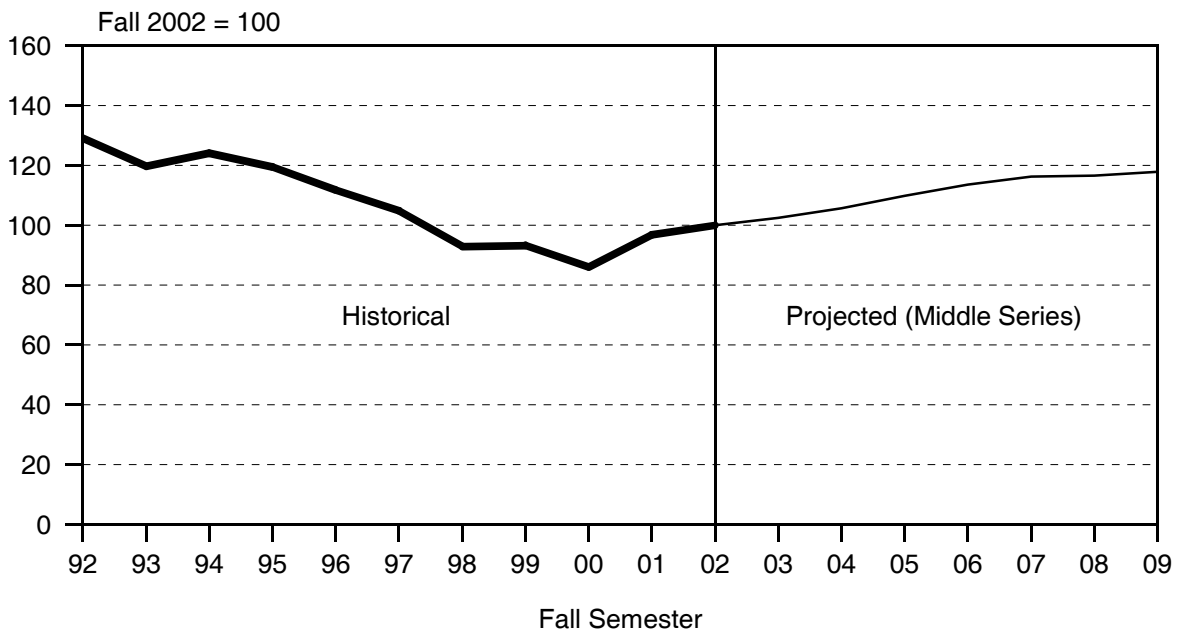


Figure D2
Enrollment Index



Kaua'i Community College
Credit Students

Figure D3
High, Middle and Low Projection Series

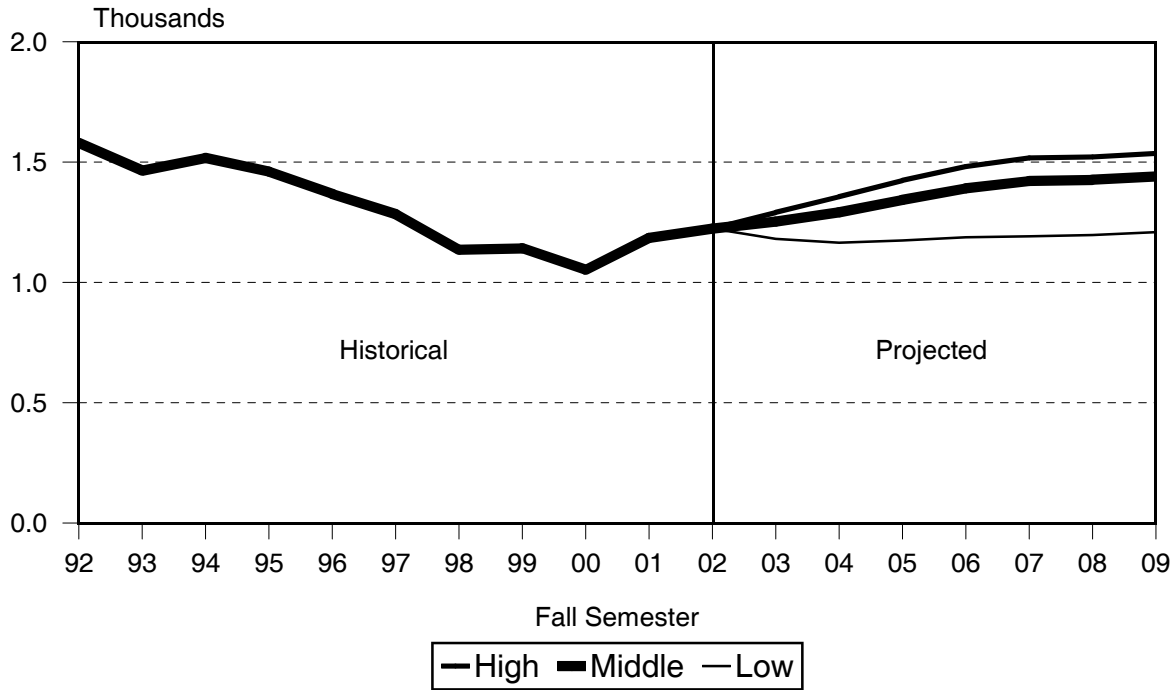


Figure D4
Historical and Projected Headcount Enrollment

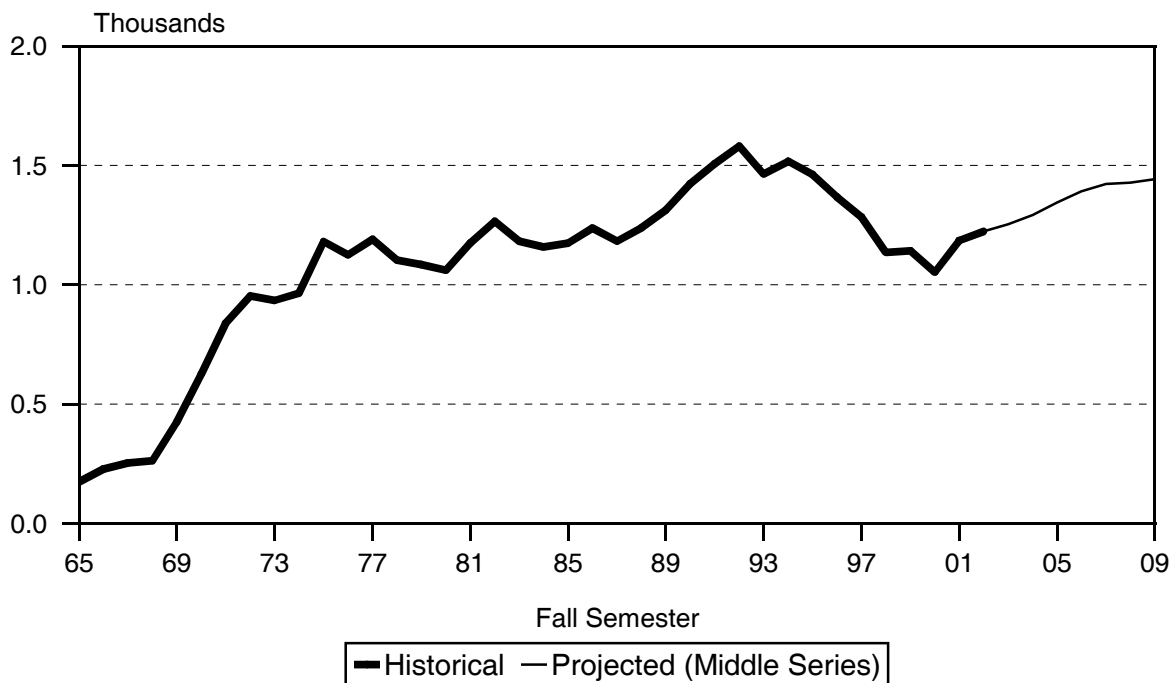


TABLE D1
HEADCOUNT ENROLLMENT OF CREDIT STUDENTS
LOW, MIDDLE AND HIGH PROJECTION SERIES
KAUA'I COMMUNITY COLLEGE
FALL 2002 TO FALL 2009

PROJECTION SERIES	ACTUAL	PROJECTED						
	2002	2003	2004	2005	2006	2007	2008	2009
HIGH SERIES TOTAL	1,224	1,291	1,356	1,425	1,482	1,517	1,522	1,537
First Time	352	332	343	363	370	364	369	384
Transfer	87	131	131	131	131	131	131	131
Continuing / Returning	785	828	882	931	981	1,022	1,022	1,022
MIDDLE SERIES TOTAL 1/	1,224	1,253	1,292	1,344	1,391	1,422	1,427	1,442
First Time	352	291	302	321	327	323	328	343
Transfer	87	123	123	123	123	123	123	123
Continuing / Returning	785	839	867	900	941	976	976	976
LOW SERIES TOTAL	1,224	1,181	1,165	1,175	1,188	1,192	1,197	1,209
First Time	352	246	257	275	281	275	280	292
Transfer	87	117	117	117	117	117	117	117
Continuing / Returning	785	818	791	783	790	800	800	800

1/ The remaining tables in the report use the Middle Projection Series.

TABLE D2
HEADCOUNT ENROLLMENT OF CREDIT STUDENTS, BY REGISTRATION STATUS
MIDDLE PROJECTION SERIES
KAUA'I COMMUNITY COLLEGE
FALL 1996 TO FALL 2009

REGISTRATION STATUS	HISTORICAL							PROJECTED						
	1996	1997	1998	1999	2000	2001	2002	2003	2004	2005	2006	2007	2008	2009
TOTAL	1,367	1,283	1,136	1,142	1,052	1,185	1,224	1,253	1,292	1,344	1,391	1,422	1,427	1,442
Liberal Arts	598	563	511	506	513	545	592	584	586	597	608	612	614	623
Career & Technical Ed	580	560	480	398	356	362	284	270	263	263	264	264	266	269
Unclassified	189	160	145	238	183	278	348	399	443	484	519	546	547	550
First-Time By HS Background	287	269	233	256	245	266	352	291	302	321	327	323	328	343
Direct From Hawai'i Public HS ..	178	169	135	158	145	137	166	135	145	161	166	163	167	180
Recent Hawai'i HS Graduates ..	23	23	21	18	21	24	22	21	22	25	26	25	26	28
Other First-Time Students	86	77	77	80	79	105	164	135	135	135	135	135	135	135
First-Time, By Program	287	269	233	256	245	266	352	291	302	321	327	323	328	343
Liberal Arts	153	145	116	141	144	160	169	157	164	173	177	175	177	186
Career & Technical Ed	109	107	102	78	74	67	82	71	73	78	79	78	80	83
Unclassified	25	17	15	37	27	39	101	63	65	70	71	70	71	74
Transfer	129	110	99	119	108	174	87	123	123	123	123	123	123	123
Liberal Arts	56	54	47	58	63	80	40	57	57	57	57	57	57	57
Career & Technical Ed	24	18	24	13	16	27	6	14	14	14	14	14	14	14
Unclassified	49	38	28	48	29	67	41	52	52	52	52	52	52	52
Continuing/Returning	951	904	804	767	699	745	785	839	867	900	941	976	976	976
Liberal Arts	389	364	348	307	306	305	383	370	365	367	374	380	380	380
Career & Technical Ed	447	435	354	307	266	268	196	185	176	171	171	172	172	172
Unclassified	115	105	102	153	127	172	206	284	326	362	396	424	424	424

TABLE D3
HEADCOUNT ENROLLMENT, BY PROGRAM
MIDDLE PROJECTION SERIES
KAUA'I COMMUNITY COLLEGE
FALL 2002 TO FALL 2009

PROGRAM	ACTUAL	PROJECTED						
	2002	2003	2004	2005	2006	2007	2008	2009
Total Students	1,224	1,253	1,292	1,344	1,391	1,422	1,427	1,442
General & Pre-Prof Ed ..	592	584	586	597	608	612	614	623
Liberal Arts	592	584	586	597	608	612	614	623
Career & Technical Ed ..	284	270	263	263	264	264	266	269
Business	132	126	122	122	123	123	123	125
Health Services	33	31	31	31	31	31	31	31
Public Services	37	35	34	34	34	34	35	35
Technology	82	78	76	76	76	76	77	78
Unclassified	348	399	443	484	519	546	547	550
Regular Unclassified ..	322	379	421	459	493	520	521	523
Special Students	26	20	22	25	26	26	26	27
Early Admit	26	20	22	25	26	26	26	27

TABLE D4
 STUDENT SEMESTER HOURS OFFERED, BY PROGRAM
 MIDDLE PROJECTION SERIES
 KAUA'I COMMUNITY COLLEGE
 FALL 2002 TO FALL 2009

PROGRAM	ACTUAL	PROJECTED						
	2002	2003	2004	2005	2006	2007	2008	2009
Total	10,093	10,197	10,397	10,727	11,035	11,228	11,272	11,397
General Education	6,637	6,663	6,773	6,974	7,160	7,265	7,294	7,384
Humanities	3,711	3,738	3,811	3,935	4,048	4,113	4,129	4,179
Natural Sciences	1,963	1,951	1,967	2,013	2,057	2,079	2,088	2,116
Social Sciences	720	715	722	739	755	764	767	777
Other General Educ	243	259	273	287	300	309	310	312
Career & Technical Ed	3,456	3,534	3,624	3,753	3,875	3,963	3,978	4,013
Business	1,597	1,628	1,662	1,718	1,775	1,813	1,815	1,835
Food Services	467	541	594	644	689	725	727	730
Health Services	466	454	458	465	471	475	476	478
Public Services	133	131	131	133	135	137	139	139
Technology	793	780	779	793	805	813	821	831

TABLE D5
 FULL-TIME EQUIVALENT COURSE ENROLLMENT SERVED, BY PROGRAM
 MIDDLE PROJECTION SERIES
 KAUA'I COMMUNITY COLLEGE
 FALL 2002 TO FALL 2009

PROGRAM	ACTUAL	PROJECTED						
	2002	2003	2004	2005	2006	2007	2008	2009
Total	672	680	694	715	735	749	751	760
General Education	442	444	451	464	477	485	486	493
Humanities	247	249	254	262	270	274	275	279
Natural Sciences	132	130	131	134	137	139	139	141
Social Sciences	47	48	48	49	50	51	51	52
Other General Educ	16	17	18	19	20	21	21	21
Career & Technical Ed	230	236	243	251	258	264	265	267
Business	106	109	111	115	118	121	121	122
Food Services	31	36	40	43	46	48	48	49
Health Services	31	30	31	31	31	32	32	32
Public Services	9	9	9	9	9	9	9	9
Technology	53	52	52	53	54	54	55	55

Leeward Community College
Credit Students

Figure E1
Historical and Projected Headcount Enrollment

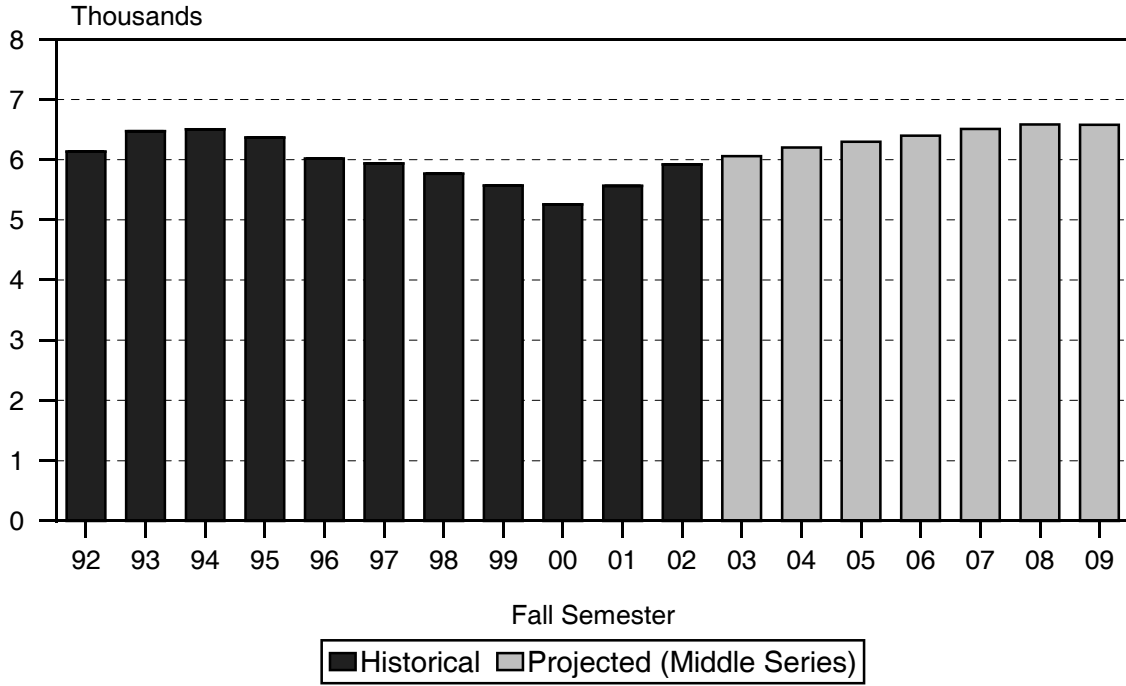
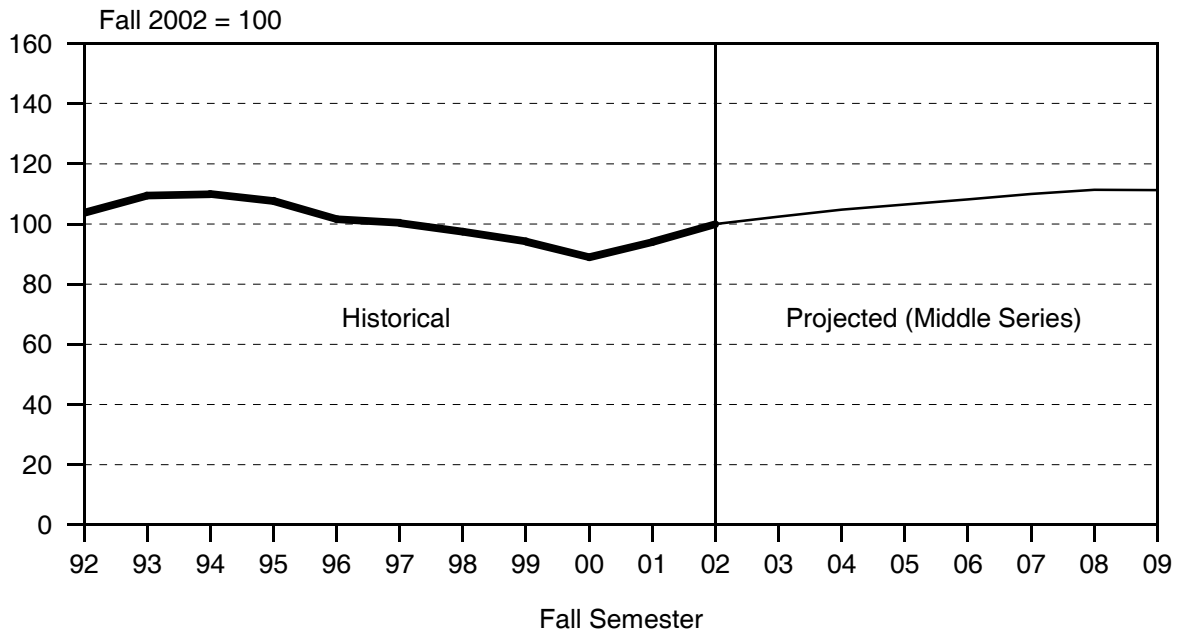


Figure E2
Enrollment Index



Leeward Community College
Credit Students

Figure E3
High, Middle and Low Projection Series

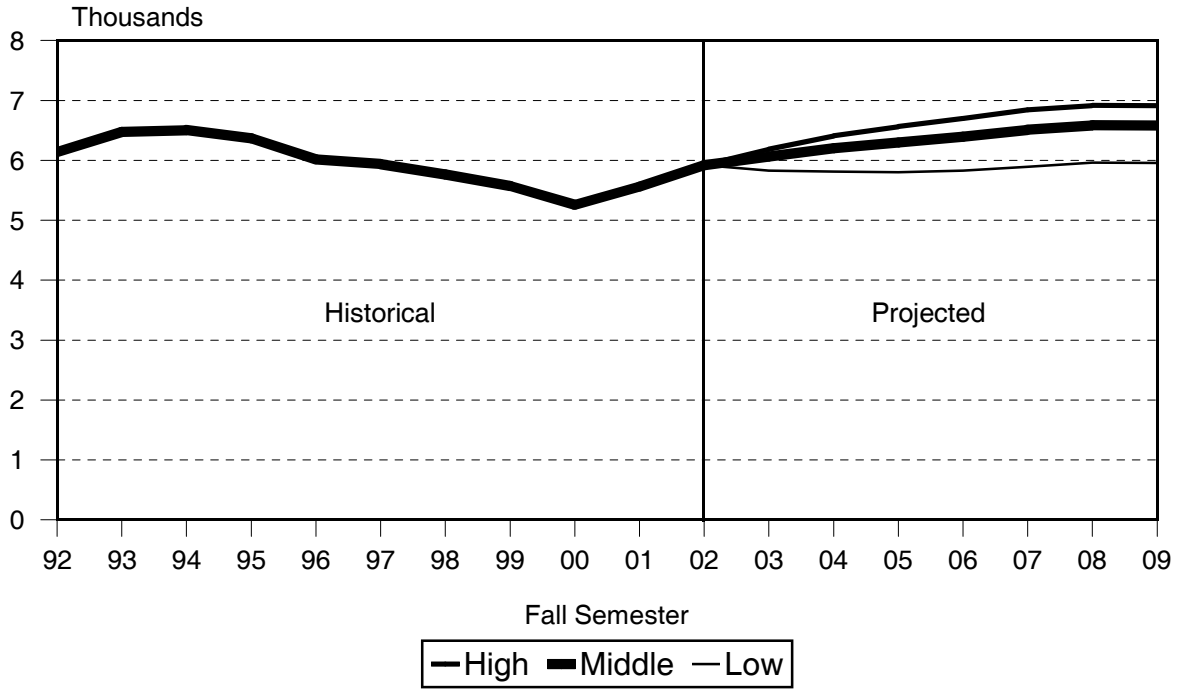
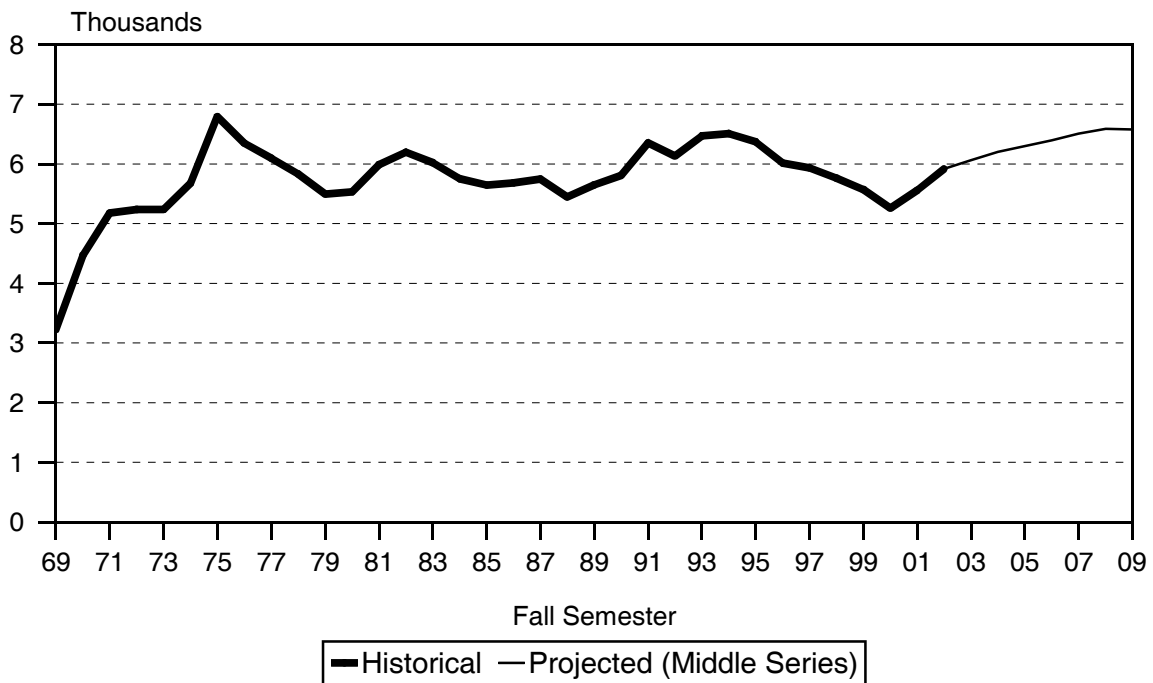


Figure E4
Historical and Projected Headcount Enrollment



**TABLE E1
 HEADCOUNT ENROLLMENT OF CREDIT STUDENTS
 LOW, MIDDLE AND HIGH PROJECTION SERIES
 LEEWARD COMMUNITY COLLEGE
 FALL 2002 TO FALL 2009**

PROJECTION SERIES	ACTUAL	PROJECTED						
	2002	2003	2004	2005	2006	2007	2008	2009
HIGH SERIES TOTAL	5,918	6,184	6,408	6,563	6,698	6,843	6,917	6,911
First Time	1,370	1,351	1,395	1,399	1,429	1,482	1,556	1,550
Transfer	851	894	894	894	894	894	894	894
Continuing / Returning	3,697	3,939	4,119	4,270	4,375	4,467	4,467	4,467
MIDDLE SERIES TOTAL 1/	5,918	6,062	6,203	6,298	6,396	6,509	6,587	6,580
First Time	1,370	1,292	1,340	1,342	1,378	1,427	1,505	1,498
Transfer	851	872	872	872	872	872	872	872
Continuing / Returning	3,697	3,898	3,991	4,084	4,146	4,210	4,210	4,210
LOW SERIES TOTAL	5,918	5,827	5,811	5,802	5,829	5,893	5,964	5,958
First Time	1,370	1,227	1,269	1,271	1,303	1,351	1,422	1,416
Transfer	851	819	819	819	819	819	819	819
Continuing / Returning	3,697	3,781	3,723	3,712	3,707	3,723	3,723	3,723

1/ The remaining tables in the report use the Middle Projection Series.

TABLE E2
HEADCOUNT ENROLLMENT OF CREDIT STUDENTS, BY REGISTRATION STATUS
MIDDLE PROJECTION SERIES
LEEWARD COMMUNITY COLLEGE
FALL 1996 TO FALL 2009

REGISTRATION STATUS	HISTORICAL							PROJECTED						
	1996	1997	1998	1999	2000	2001	2002	2003	2004	2005	2006	2007	2008	2009
TOTAL	6,014	5,936	5,765	5,570	5,259	5,562	5,918	6,062	6,203	6,298	6,396	6,509	6,587	6,580
Liberal Arts	4,235	4,191	4,112	3,991	3,779	3,958	4,312	4,422	4,532	4,608	4,685	4,774	4,831	4,826
Career & Technical Ed	1,310	1,279	1,264	1,167	1,078	1,112	1,062	1,065	1,076	1,083	1,094	1,110	1,125	1,124
Unclassified	469	466	389	412	402	492	544	575	595	607	617	625	631	630
First-Time By HS Background	1,332	1,338	1,288	1,290	1,084	1,270	1,370	1,292	1,340	1,342	1,378	1,427	1,505	1,498
Direct From Hawai'i Public HS ..	685	662	687	698	604	698	709	682	721	723	752	792	856	850
Recent Hawai'i HS Graduates ..	181	160	161	160	136	163	160	154	163	163	170	179	193	192
Other First-Time Students	466	516	440	432	344	409	501	456	456	456	456	456	456	456
First-Time, By Program	1,332	1,338	1,288	1,290	1,084	1,270	1,370	1,292	1,340	1,342	1,378	1,427	1,505	1,498
Liberal Arts	972	965	943	943	787	928	1,025	955	991	993	1,019	1,056	1,113	1,108
Career & Technical Ed	252	275	264	248	223	256	247	247	256	256	263	272	287	286
Unclassified	108	98	81	99	74	86	98	90	93	93	96	99	105	104
Transfer	679	658	668	661	747	860	851	872	872	872	872	872	872	872
Liberal Arts	427	415	425	427	463	544	556	561	561	561	561	561	561	561
Career & Technical Ed	152	121	135	118	152	146	122	137	137	137	137	137	137	137
Unclassified	100	122	108	116	132	170	173	174	174	174	174	174	174	174
Continuing/Returning	4,003	3,940	3,809	3,619	3,428	3,432	3,697	3,898	3,991	4,084	4,146	4,210	4,210	4,210
Liberal Arts	2,836	2,811	2,744	2,621	2,529	2,486	2,731	2,906	2,980	3,054	3,105	3,157	3,157	3,157
Career & Technical Ed	906	883	865	801	703	710	693	681	683	690	694	701	701	701
Unclassified	261	246	200	197	196	236	273	311	328	340	347	352	352	352

TABLE E3
HEADCOUNT ENROLLMENT, BY PROGRAM
MIDDLE PROJECTION SERIES
LEEWARD COMMUNITY COLLEGE
FALL 2002 TO FALL 2009

PROGRAM	ACTUAL	PROJECTED						
	2002	2003	2004	2005	2006	2007	2008	2009
Total Students	5,918	6,062	6,203	6,298	6,396	6,509	6,587	6,580
General & Pre-Prof Ed ..	4,312	4,422	4,532	4,608	4,685	4,774	4,831	4,826
Liberal Arts	4,312	4,422	4,532	4,608	4,685	4,774	4,831	4,826
Career & Technical Ed ..	1,062	1,065	1,076	1,083	1,094	1,110	1,125	1,124
Business	656	658	664	669	676	685	696	695
Food Services	124	124	126	126	128	130	131	131
Public Services	39	39	40	40	40	41	41	41
Technology	243	244	246	248	250	254	257	257
Unclassified	544	575	595	607	617	625	631	630
Regular Unclassified ..	520	552	571	583	592	600	605	604
Special Students	24	23	24	24	25	25	26	26
Early Admit	24	23	24	24	25	25	26	26

TABLE E4
STUDENT SEMESTER HOURS OFFERED, BY PROGRAM
MIDDLE PROJECTION SERIES
LEEWARD COMMUNITY COLLEGE
FALL 2002 TO FALL 2009

PROGRAM	ACTUAL	PROJECTED						
	2002	2003	2004	2005	2006	2007	2008	2009
Total	54,310	55,588	56,855	57,720	58,617	59,663	60,376	60,315
General Education	45,079	46,203	47,299	48,046	48,810	49,691	50,283	50,230
Humanities	24,218	24,813	25,399	25,798	26,207	26,679	26,997	26,969
Natural Sciences	12,307	12,617	12,919	13,125	13,335	13,576	13,737	13,722
Social Sciences	8,309	8,522	8,725	8,864	9,005	9,168	9,277	9,268
Other General Educ	245	251	256	259	263	268	272	271
Career & Technical Ed	9,231	9,385	9,556	9,674	9,807	9,972	10,093	10,085
Business	5,506	5,616	5,726	5,805	5,890	5,985	6,065	6,058
Food Services	728	730	742	743	755	768	774	774
Health Services	510	524	535	544	554	564	569	569
Public Services	816	833	853	865	877	894	904	904
Technology	1,671	1,682	1,700	1,717	1,731	1,761	1,781	1,780

TABLE E5
FULL-TIME EQUIVALENT COURSE ENROLLMENT SERVED, BY PROGRAM
MIDDLE PROJECTION SERIES
LEEWARD COMMUNITY COLLEGE
FALL 2002 TO FALL 2009

PROGRAM	ACTUAL	PROJECTED						
	2002	2003	2004	2005	2006	2007	2008	2009
Total	3,619	3,706	3,790	3,848	3,907	3,978	4,025	4,022
General Education	3,005	3,080	3,153	3,203	3,254	3,313	3,352	3,349
Humanities	1,614	1,654	1,693	1,720	1,747	1,779	1,800	1,798
Natural Sciences	821	841	861	875	889	905	916	915
Social Sciences	553	568	582	591	600	611	618	618
Other General Educ	17	17	17	17	18	18	18	18
Career & Technical Ed	614	626	637	645	653	665	673	673
Business	367	374	382	387	393	399	404	404
Food Services	49	49	49	50	50	51	52	52
Health Services	34	35	36	36	37	38	38	38
Public Services	54	56	57	58	58	60	60	60
Technology	110	112	113	114	115	117	119	119

Maui Community College
Credit Students

Figure F1
Historical and Projected Headcount Enrollment

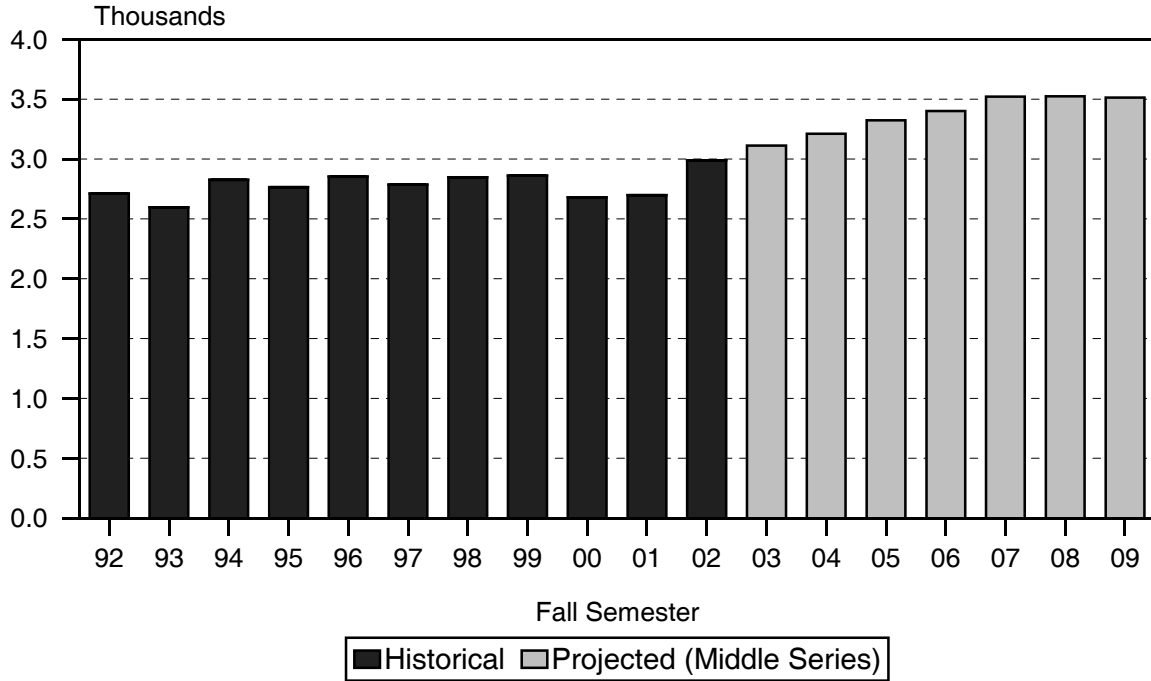
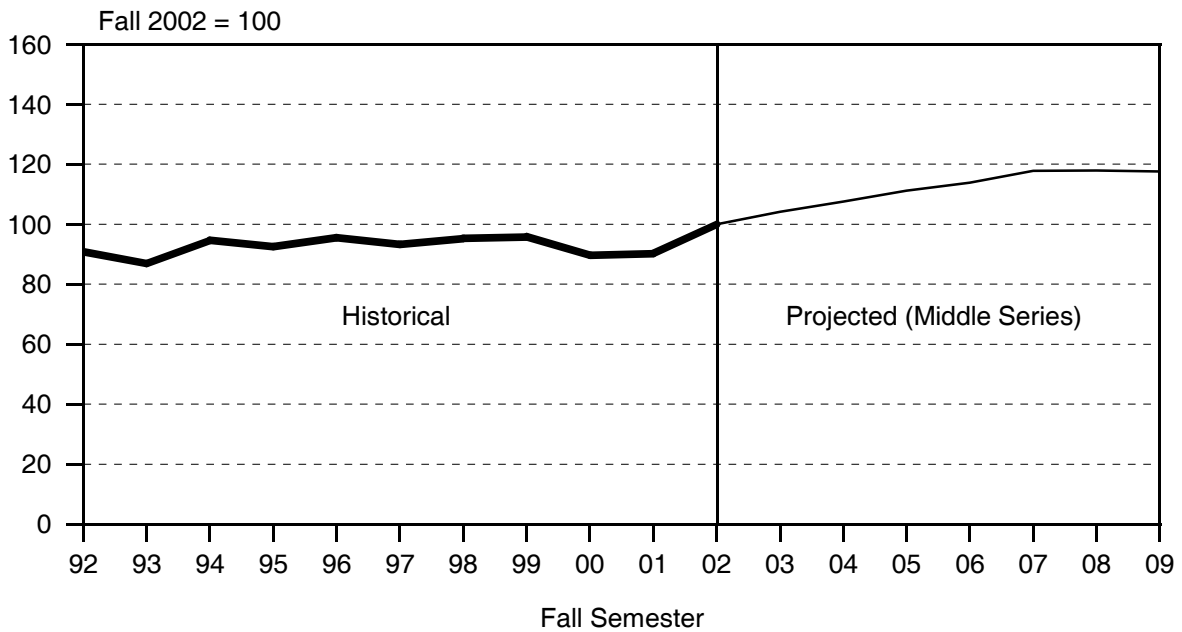


Figure F2
Enrollment Index



Maui Community College
Credit Students

Figure F3
High, Middle and Low Projection Series

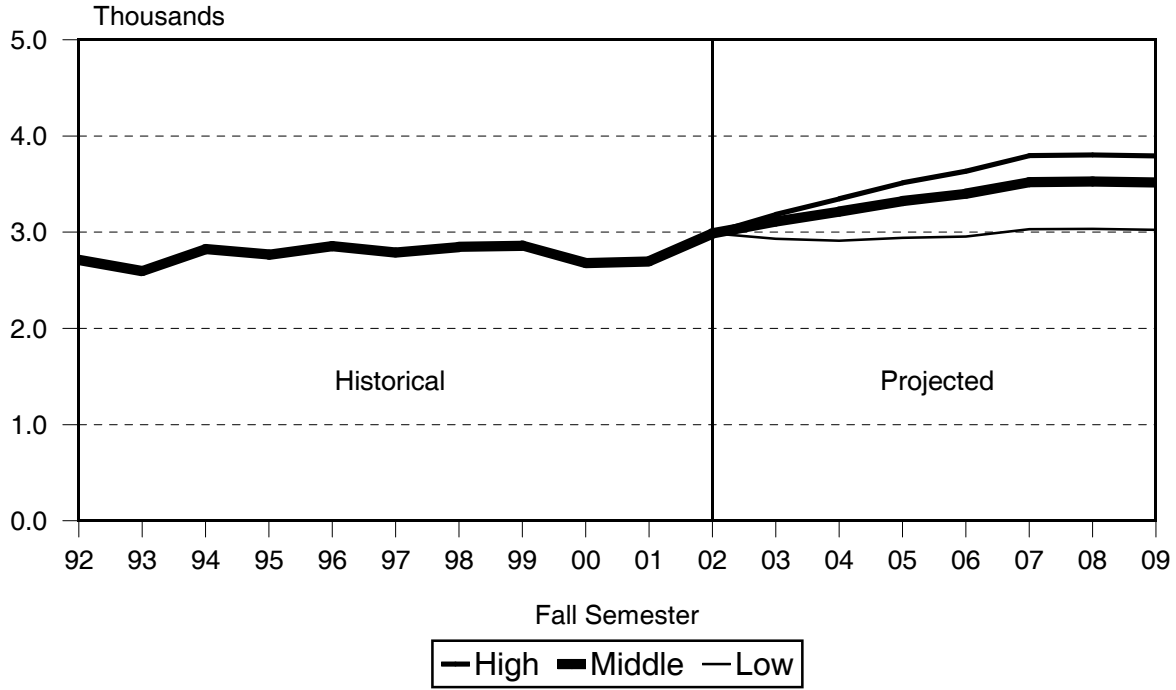


Figure F4
Historical and Projected Headcount Enrollment

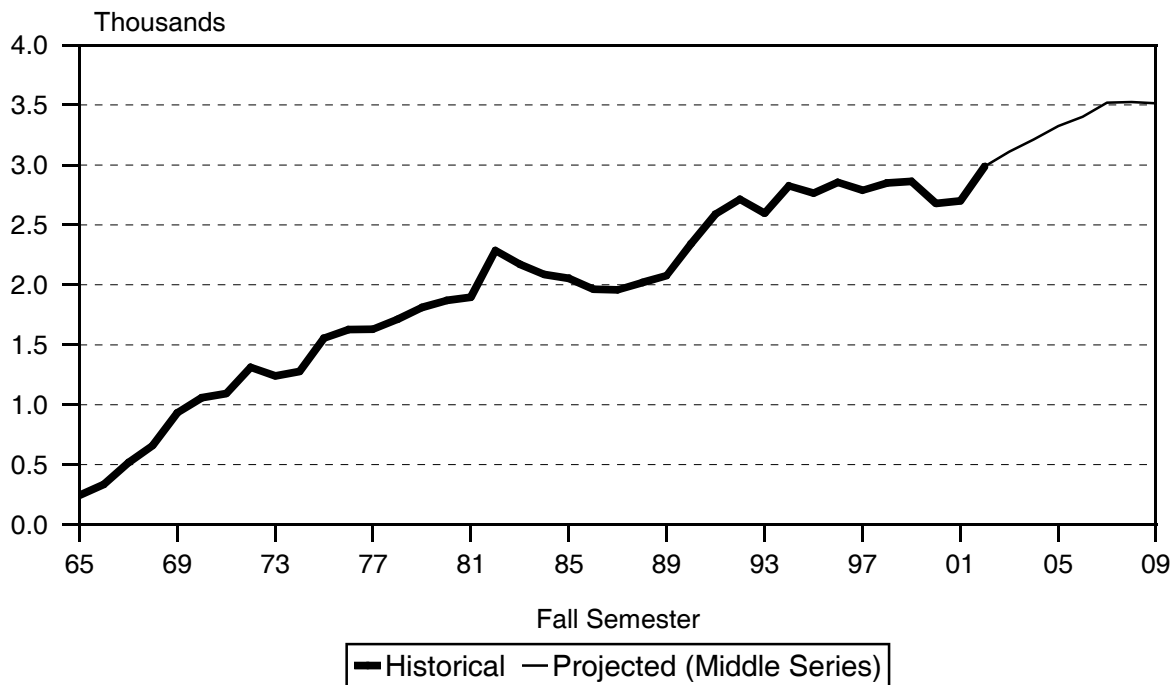


TABLE F1
HEADCOUNT ENROLLMENT OF CREDIT STUDENTS
LOW, MIDDLE AND HIGH PROJECTION SERIES
MAUI COMMUNITY COLLEGE
FALL 2002 TO FALL 2009

PROJECTION SERIES	ACTUAL	PROJECTED						
	2002	2003	2004	2005	2006	2007	2008	2009
HIGH SERIES TOTAL	2,989	3,185	3,346	3,512	3,632	3,797	3,804	3,792
First Time	891	945	940	964	941	992	999	987
Transfer	202	228	258	288	318	349	349	349
Continuing / Returning	1,896	2,012	2,148	2,260	2,373	2,456	2,456	2,456
Numerical Change (hidden)	290	123	101	112	77	118	5	-11
Percentage Change (hidden)	10.8%	4.1%	3.2%	3.5%	2.3%	3.5%	0.1%	-0.3%
MIDDLE SERIES TOTAL 1/	2,989	3,112	3,213	3,325	3,402	3,520	3,525	3,514
First Time	891	879	875	897	878	925	930	919
Transfer	202	221	239	258	276	295	295	295
Continuing / Returning	1,896	2,012	2,099	2,170	2,248	2,300	2,300	2,300
LOW SERIES TOTAL	2,989	2,933	2,912	2,941	2,954	3,031	3,036	3,024
First Time	891	859	855	877	855	904	909	897
Transfer	202	192	210	229	247	266	266	266
Continuing / Returning	1,896	1,882	1,847	1,835	1,852	1,861	1,861	1,861

1/ The remaining tables in the report use the Middle Projection Series.

TABLE F2
HEADCOUNT ENROLLMENT OF CREDIT STUDENTS, BY REGISTRATION STATUS
MIDDLE PROJECTION SERIES
MAUI COMMUNITY COLLEGE
FALL 1996 TO FALL 2009

REGISTRATION STATUS	HISTORICAL							PROJECTED						
	1996	1997	1998	1999	2000	2001	2002	2003	2004	2005	2006	2007	2008	2009
TOTAL	2,854	2,787	2,849	2,862	2,678	2,699	2,989	3,112	3,213	3,325	3,402	3,520	3,525	3,514
Liberal Arts	1,247	1,212	1,188	1,129	1,058	988	1,291	1,347	1,391	1,438	1,471	1,519	1,520	1,517
Career & Technical Ed	1,096	1,052	1,121	1,166	1,073	1,064	838	824	819	828	832	853	855	851
Unclassified	511	523	540	567	547	647	860	941	1,003	1,059	1,099	1,148	1,150	1,146
First-Time By HS Background	1,103	1,061	1,133	1,123	923	880	891	879	875	897	878	925	930	919
Direct From Hawai'i Public HS ..	278	309	325	329	382	262	267	260	257	274	259	295	299	291
Recent Hawai'i HS Graduates ..	95	83	85	86	84	76	83	78	77	82	78	89	90	87
Other First-Time Students	730	669	723	708	457	542	541	541	541	541	541	541	541	541
First-Time, By Program	1,103	1,061	1,133	1,123	923	880	891	879	875	897	878	925	930	919
Liberal Arts	473	468	452	442	339	301	390	343	341	349	342	361	362	359
Career & Technical Ed	349	304	381	394	337	299	245	270	269	276	270	284	286	282
Unclassified	281	289	300	287	247	280	256	266	265	272	266	280	282	278
Transfer	81	54	64	112	147	157	202	221	239	258	276	295	295	295
Liberal Arts	36	28	26	35	45	47	77	75	81	88	94	100	100	100
Career & Technical Ed	19	11	17	33	27	46	45	57	62	67	71	76	76	76
Unclassified	26	15	21	44	75	64	80	89	96	103	111	119	119	119
Continuing/Returning	1,670	1,672	1,652	1,627	1,608	1,662	1,896	2,012	2,099	2,170	2,248	2,300	2,300	2,300
Liberal Arts	738	716	710	652	674	640	824	929	969	1,001	1,035	1,058	1,058	1,058
Career & Technical Ed	728	737	723	739	709	719	548	497	488	485	491	493	493	493
Unclassified	204	219	219	236	225	303	524	586	642	684	722	749	749	749

TABLE F3
HEADCOUNT ENROLLMENT, BY PROGRAM
MIDDLE PROJECTION SERIES
MAUI COMMUNITY COLLEGE
FALL 2002 TO FALL 2009

PROGRAM	ACTUAL	PROJECTED							
	2002	2003	2004	2005	2006	2007	2008	2009	
Total Students	2,989	3,112	3,213	3,325	3,402	3,520	3,525	3,514	
General & Pre-Prof Ed ..	1,291	1,347	1,391	1,438	1,471	1,519	1,520	1,517	
Liberal Arts	1,291	1,347	1,391	1,438	1,471	1,519	1,520	1,517	
Career & Technical Ed ..	838	824	819	828	832	853	855	851	
Business	247	243	240	244	244	252	252	251	
Food Services	63	62	62	62	63	64	64	64	
Health Services	153	150	150	151	152	156	156	155	
Public Services	181	178	177	179	180	184	185	184	
Technology	194	191	190	192	193	197	198	197	
Unclassified	860	941	1003	1059	1099	1148	1150	1146	
Regular Unclassified ..	822	899	959	1013	1052	1100	1101	1098	
Special Students	38	42	44	46	47	48	49	48	
Early Admit	38	42	44	46	47	48	49	48	

TABLE F4
STUDENT SEMESTER HOURS OFFERED, BY PROGRAM
MIDDLE PROJECTION SERIES
MAUI COMMUNITY COLLEGE
FALL 2002 TO FALL 2009

PROGRAM	ACTUAL	PROJECTED						
	2002	2003	2004	2005	2006	2007	2008	2009
Total	24,462	25,339	26,080	26,929	27,512	28,439	28,474	28,388
General Education	14,863	15,552	16,051	16,599	16,976	17,556	17,575	17,526
Humanities	7,846	8,255	8,520	8,817	9,016	9,325	9,336	9,310
Natural Sciences	4,219	4,391	4,532	4,684	4,791	4,955	4,960	4,946
Social Sciences	2,597	2,699	2,785	2,877	2,944	3,044	3,047	3,038
Other General Ed	201	207	214	221	225	232	232	232
Career & Technical Ed	9,599	9,787	10,029	10,330	10,536	10,883	10,899	10,862
Business	4,307	4,373	4,491	4,644	4,738	4,909	4,915	4,898
Food Services	932	953	976	998	1,023	1,050	1,051	1,049
Health Services	1,784	1,817	1,855	1,902	1,935	1,996	1,998	1,989
Public Services	910	932	953	980	999	1,030	1,032	1,029
Technology	1,664	1,710	1,752	1,804	1,839	1,896	1,901	1,895
Other Vocational	2	2	2	2	2	2	2	2

TABLE F5
FULL-TIME EQUIVALENT COURSE ENROLLMENT SERVED, BY PROGRAM
MIDDLE PROJECTION SERIES
MAUI COMMUNITY COLLEGE
FALL 2002 TO FALL 2009

PROGRAM	ACTUAL	PROJECTED						
	2002	2003	2004	2005	2006	2007	2008	2009
Total	1,633	1,690	1,739	1,796	1,834	1,895	1,898	1,894
General Education	993	1,037	1,070	1,107	1,131	1,170	1,171	1,169
Humanities	523	550	568	588	601	622	622	621
Natural Sciences	282	293	302	312	319	330	331	330
Social Sciences	174	180	186	192	196	203	203	203
Other General Ed	14	14	14	15	15	15	15	15
Career & Technical Ed	640	653	669	689	703	725	727	725
Business	287	292	299	310	316	327	328	327
Food Services	62	64	65	67	68	70	70	70
Health Services	119	121	124	127	129	133	133	133
Public Services	61	62	64	65	67	69	69	69
Technology	111	114	117	120	123	126	127	126

Windward Community College
Credit Students

Figure G1
Historical and Projected Headcount Enrollment

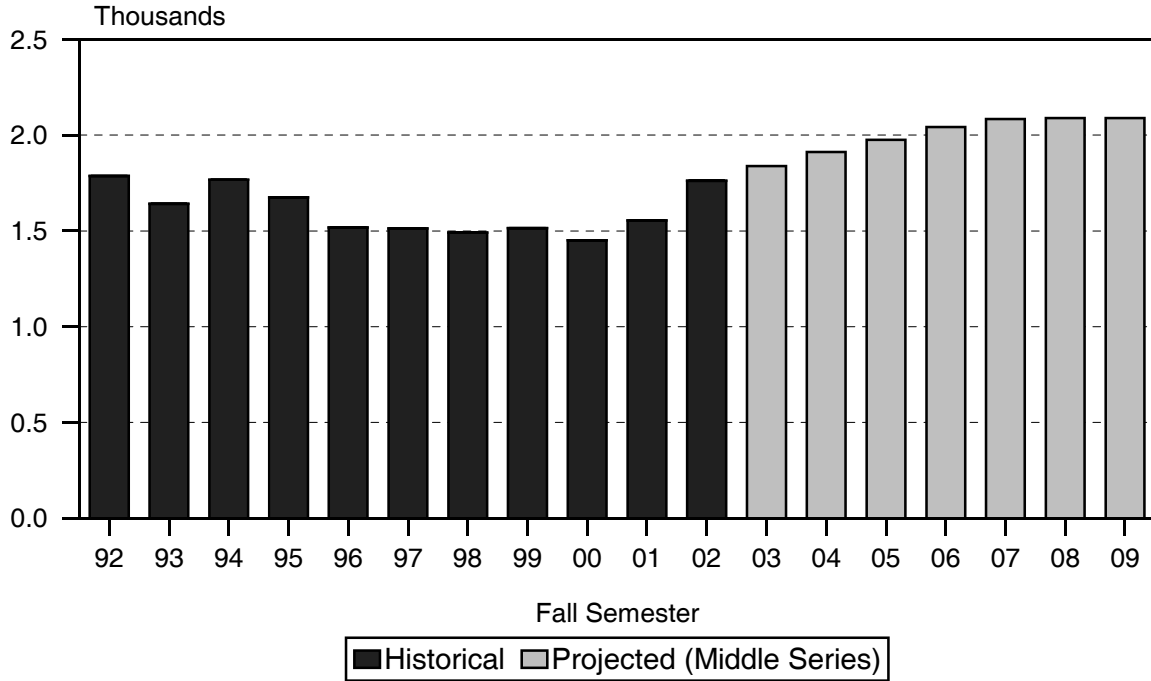
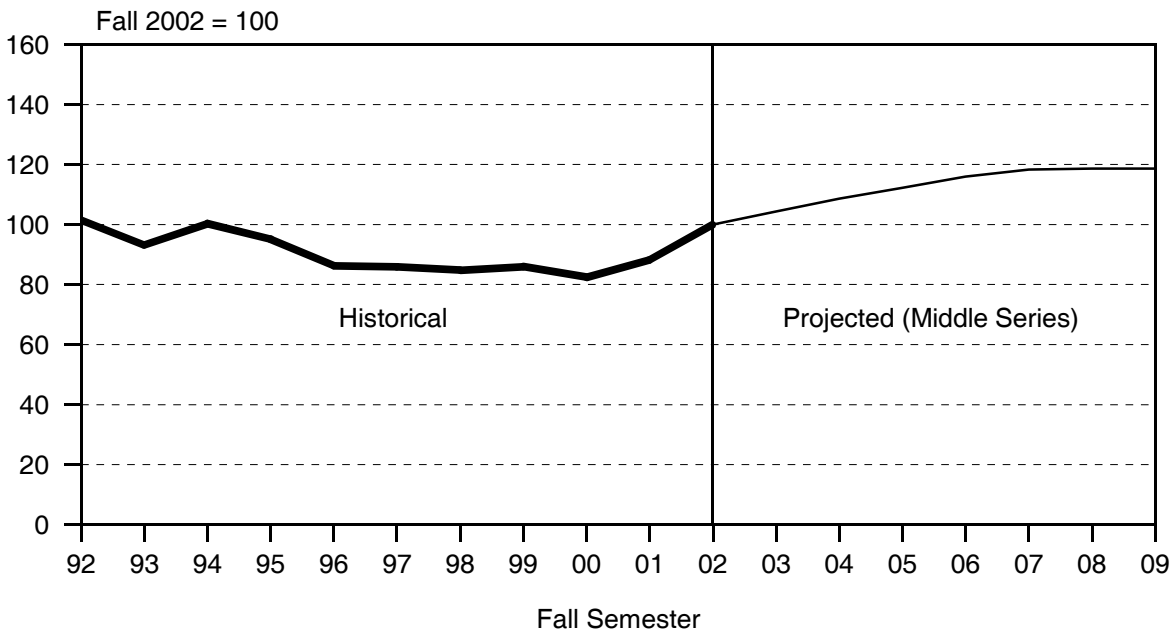


Figure G2
Enrollment Index



Windward Community College
Credit Students

Figure G3
High, Middle and Low Projection Series

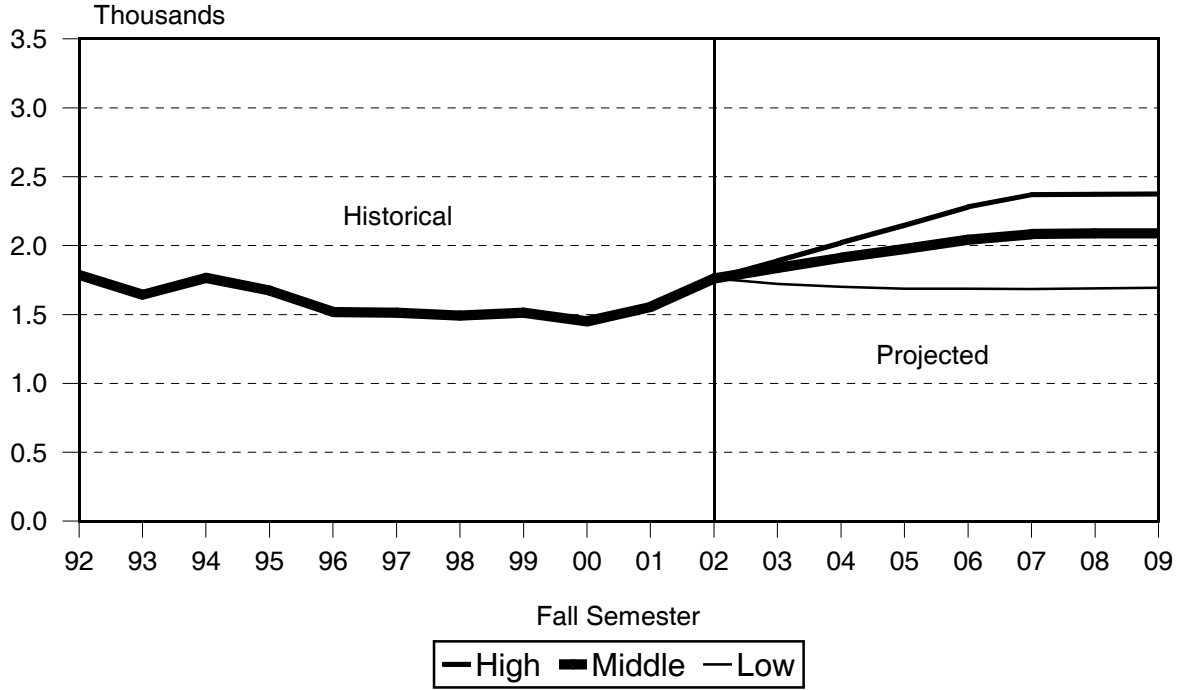


Figure G4
Historical and Projected Headcount Enrollment

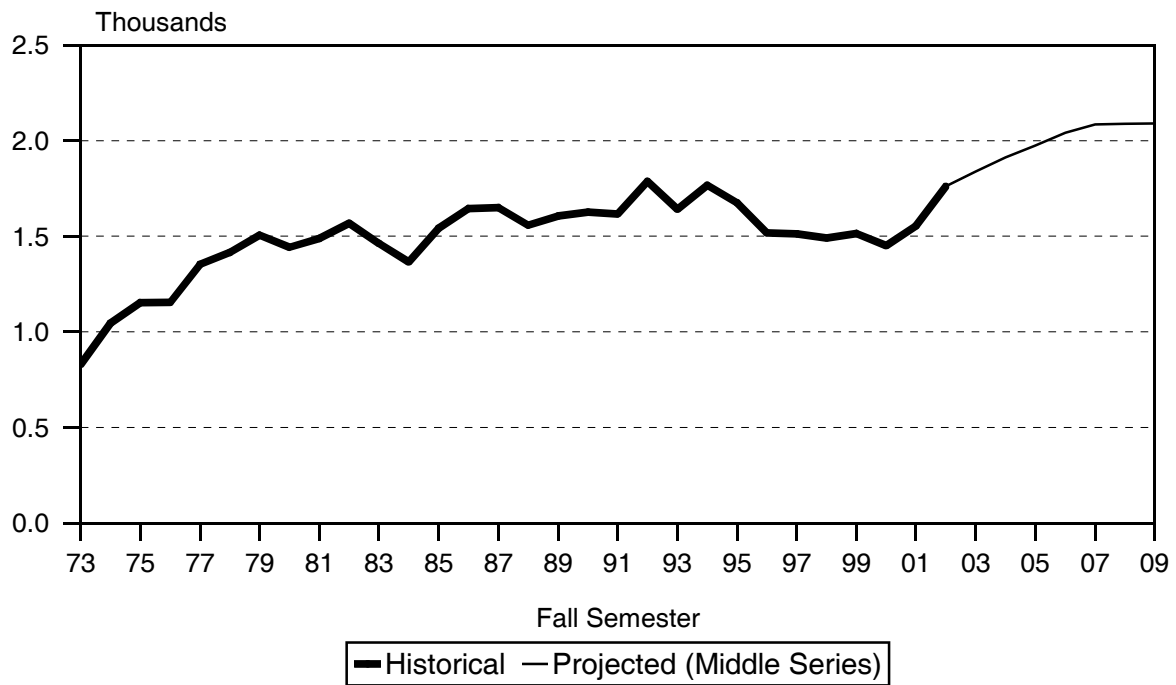


TABLE G1
HEADCOUNT ENROLLMENT OF CREDIT STUDENTS
LOW, MIDDLE AND HIGH PROJECTION SERIES
WINDWARD COMMUNITY COLLEGE
FALL 2002 TO FALL 2009

PROJECTION SERIES	ACTUAL	PROJECTED						
	2002	2003	2004	2005	2006	2007	2008	2009
HIGH SERIES TOTAL	1,761	1,890	2,021	2,148	2,282	2,369	2,373	2,375
First Time	403	391	395	394	404	404	408	410
Transfer	313	335	377	418	460	460	460	460
Continuing / Returning	1,045	1,164	1,249	1,336	1,418	1,505	1,505	1,505
MIDDLE SERIES TOTAL 1/	1,761	1,839	1,912	1,975	2,042	2,084	2,088	2,089
First Time	403	370	377	377	387	387	391	392
Transfer	313	330	346	363	379	379	379	379
Continuing / Returning	1,045	1,139	1,189	1,235	1,276	1,318	1,318	1,318
LOW SERIES TOTAL	1,761	1,721	1,701	1,687	1,686	1,685	1,690	1,693
First Time	403	351	356	356	363	363	368	371
Transfer	313	231	231	231	231	231	231	231
Continuing / Returning	1,045	1,139	1,114	1,100	1,092	1,091	1,091	1,091

1/ The remaining tables in the report use the Middle Projection Series.

TABLE G2
HEADCOUNT ENROLLMENT OF CREDIT STUDENTS, BY REGISTRATION STATUS
MIDDLE PROJECTION SERIES
WINDWARD COMMUNITY COLLEGE
FALL 1996 TO FALL 2009

REGISTRATION STATUS	HISTORICAL							PROJECTED						
	1996	1997	1998	1999	2000	2001	2002	2003	2004	2005	2006	2007	2008	2009
TOTAL	1,518	1,513	1,491	1,514	1,451	1,554	1,761	1,839	1,912	1,975	2,042	2,084	2,088	2,089
Liberal Arts	1,238	1,252	1,246	1,307	1,244	1,336	1,526	1,579	1,632	1,680	1,732	1,766	1,769	1,770
Career & Technical Ed	111	98	75	73	48	22	19	17	17	17	18	18	18	18
Unclassified	169	163	170	134	159	196	216	243	263	278	292	300	301	301
First-Time By HS Background	321	315	338	364	315	396	403	370	377	377	387	387	391	392
Direct From Hawai'i Public HS ..	122	121	143	176	142	171	171	158	163	163	170	170	173	174
Recent Hawai'i HS Graduates ..	55	60	51	66	51	67	75	66	68	68	71	71	72	72
Other First-Time Students	144	134	144	122	122	158	157	146	146	146	146	146	146	146
First-Time, By Program	321	315	338	364	315	396	403	370	377	377	387	387	391	392
Liberal Arts	260	254	285	323	279	356	361	332	339	339	348	348	351	352
Career & Technical Ed	20	22	20	17	9	3	6	4	4	4	4	4	4	4
Unclassified	41	39	33	24	27	37	36	34	34	34	35	35	36	36
Transfer	178	196	202	183	200	227	313	330	346	363	379	379	379	379
Liberal Arts	126	154	148	142	152	155	239	239	250	263	274	274	274	274
Career & Technical Ed	9	9	6	13	7	3	5	5	5	5	6	6	6	6
Unclassified	43	33	48	28	41	69	69	86	91	95	99	99	99	99
Continuing/Returning	1,019	1,002	951	967	936	931	1,045	1,139	1,189	1,235	1,276	1,318	1,318	1,318
Liberal Arts	852	844	813	842	813	825	926	1,008	1,043	1,078	1,110	1,144	1,144	1,144
Career & Technical Ed	82	67	49	43	32	16	8	8	8	8	8	8	8	8
Unclassified	85	91	89	82	91	90	111	123	138	149	158	166	166	166

TABLE G4
 STUDENT SEMESTER HOURS OFFERED, BY PROGRAM
 MIDDLE PROJECTION SERIES
 WINDWARD COMMUNITY COLLEGE
 FALL 2002 TO FALL 2009

PROGRAM	ACTUAL	PROJECTED						
	2002	2003	2004	2005	2006	2007	2008	2009
Total	16,048	16,724	17,368	17,926	18,519	18,896	18,932	18,941
General Education	15,177	15,827	16,436	16,966	17,526	17,883	17,917	17,926
Humanities	7,613	7,937	8,241	8,505	8,785	8,964	8,982	8,986
Natural Sciences	4,000	4,170	4,329	4,469	4,616	4,710	4,718	4,720
Social Sciences	3,347	3,493	3,629	3,746	3,871	3,950	3,958	3,960
Other General Educ ...	217	227	237	246	254	259	259	260
Career & Technical Ed ..	871	897	932	960	993	1,013	1,015	1,015
Business	644	674	702	726	750	766	768	768
Public Services	96	101	105	108	111	114	114	114
Technology	131	122	125	126	132	133	133	133

TABLE G5
 FULL-TIME EQUIVALENT COURSE ENROLLMENT SERVED, BY PROGRAM
 MIDDLE PROJECTION SERIES
 WINDWARD COMMUNITY COLLEGE
 FALL 2002 TO FALL 2009

PROGRAM	ACTUAL	PROJECTED						
	2002	2003	2004	2005	2006	2007	2008	2009
Total	1,072	1,115	1,158	1,194	1,235	1,260	1,263	1,263
General Education	1,014	1,055	1,096	1,131	1,169	1,192	1,195	1,195
Humanities	507	529	549	567	586	598	599	599
Natural Sciences	267	278	289	298	308	314	315	315
Social Sciences	224	233	242	250	258	263	264	264
Other General Educ ...	16	15	16	16	17	17	17	17
Vocational Education.....	58	60	62	63	66	68	68	68
Business	43	45	47	48	50	51	51	51
Public Services	6	7	7	7	7	8	8	8
Technology	9	8	8	8	9	9	9	9