

**ENROLLMENT PROJECTIONS**  
**UNIVERSITY OF HAWAI‘I, COMMUNITY COLLEGES**  
**FALL 2006 TO FALL 2012**

Institutional Research Office

University of Hawai‘i

September 2006

File Reference: Management and Planning Support Folder, Projections

Reports available online at: <http://www.hawaii.edu/iro/maps.htm>

**ENROLLMENT PROJECTIONS  
UNIVERSITY OF HAWAII COMMUNITY COLLEGES  
FALL 2006 TO FALL 2012**

---

**INTRODUCTION**

This report presents information on projected headcount enrollment for the University of Hawai'i Community Colleges: Hawai'i, Honolulu, Kapi'olani, Kaua'i, Leeward, Maui, and Windward. **The projections are statistical extrapolations of current trends in enrollment by registration status and program area. They do not set enrollment targets and, in general, do not take into account planned or potential changes in campus policies or procedures. They should be considered as an extension into the future of current enrollment trends, and may be used as a foundation for further work in planning and budgeting.**

The enrollment projections are based upon unduplicated headcounts of students enrolled in credit courses. Included are classified students enrolled in liberal arts or vocational programs as well as unclassified students. In addition, special students (concurrent students and early admits) are included for all years, both historical and projected.

Historical data are included in the tables to facilitate comparison and analysis. They were extracted from student enrollment, academic crossover and course registration data files. Forecasts for Hawai'i public high school seniors by school district were provided by the Department of Education for the State of Hawai'i. Forecasts for Hawai'i public and private high school graduates were obtained from the Western Interstate Commission for Higher Education (WICHE).

**METHODOLOGY**

The projections are broken out by registration status: first-time, transfer, returning and continuing. Within each registration status category, enrollment is broken out further by program area: liberal arts, career and technical education and unclassified. For the Fall 2006 projections, a new line item has been added showing headcounts for students whose primary campus (home campus) is not the campus at which they are registered. Data for this item have been provided back to Fall 2003. For first-time, transfer and returning students, breakout by program area is made using average distribution ratios. For continuing students, breakout is made using continuation rates.

The Fall 2006 projection report offers three projection series - high, middle and low - for each campus and for the UH Community Colleges as a whole. The forecasted numbers in the separate series were produced by varying the input values used. Otherwise, the same general methodology is employed for all three series.

**First-time** student enrollment is divided into five sub-categories, depending upon the high school of origin. Each category is forecast separately:

- (a) Hawai'i public high school graduates entering the UH Community Colleges in the fall semester immediately following graduation from high school are called direct public entrants. The enrollment projections make use of the public high school senior forecast provided by the Hawai'i Department of Education (see Appendix A). Historical participation rates of high school seniors are calculated for each campus by school district. An average of these rates is then applied to the annual high school senior forecast by district to yield the projected number of direct entrants.
- (b) Hawai'i private high school graduates entering the UH Community Colleges in the fall semester immediately following their graduation from high school are called direct private entrants. The enrollment projections make use of the private high school graduate forecast for Hawai'i published by the Western Interstate Commission for Higher Education (WICHE), released in December 2003 (see Appendix B). Historical ratios of direct private entrants to total Hawai'i private high school graduates are calculated, by campus. An average ratio is then applied to the WICHE annual private high school graduate forecast to yield the projected number of direct private entrants.
- (c) First-time students from the U.S. mainland, as well as those from foreign countries and U.S. related areas, are forecast using trends or constants. The U.S. related areas include students from U.S. Territories (American Samoa, Guam and the Virgin Islands), students from U.S. Commonwealth states (Puerto Rico and the Northern Marianas) and Compact of Free Association member states (Federated States of Micronesia, Palau and the Republic of the Marshall Islands).
- (d) All other first-time entrants, such as those who completed high school via the General Education Development (GED) examination, those Hawai'i high school graduates who have been out of high school for more than one year and those students who did not graduate from high school, are called other first-time students. Other first-time students are projected for each campus using constants.

**Transfer** and **Returning** student enrollment are forecast using one of two methods: for those campuses where the enrollment shows a distinct trend, a trend line is used; for those campuses where the enrollment does not show a trend, a constant is used. (Note that for the Fall 2005, breakout of transfer enrollment by previous college attended was not available. This information is excluded from the Fall 2006 enrollment projection report, but may be reintroduced again when the data become available.)

**Continuing** students are forecast for each campus using continuation rates. In this report, a continuation rate is the ratio of continuing enrollment for a given program area to the previous fall semester's total enrollment for that same program area. Historical average continuation rates are applied to the total enrollment by program area to forecast the next year's continuing enrollment.

In addition to the high, middle and low projection series for each campus, detailed tables are included which project headcount enrollment, student semester hours (SSH) offered, and full-time equivalent (FTE) course enrollment by program. These tables utilize the Fall

2005 data plus the forecasted enrollments for Fall 2006 to Fall 2012 as input, then project the counts by program area using the Fall 2005 proportions across program areas. Full-Time Equivalent (FTE) course enrollment has been calculated by dividing the forecasted student semester hours offered by a constant (15). Headcount enrollment by attendance status for each campus is also provided. The distribution by attendance status is made using the Fall 2005 proportions.

Figure 1 illustrates the historical headcount enrollment at the UH Community Colleges from Fall 1995 to Fall 2005 and the projected enrollment from Fall 2006 to Fall 2012. Figure 2 provides an enrollment index to facilitate comparison with other University of Hawai'i units and campuses (Fall 2005 = 100). Figure 3 presents the high, middle and low projection series, while Figure 4 shows the historical enrollment for the UH Community Colleges from inception through Fall 2005, with projected enrollment through 2012. A similar series of charts is provided for each UH Community College campus.

In Fall 2002, the UH Community Colleges migrated to a new student registration system. Subsequently, there was a large increase in the percentage of invalid records on various measures, as well as other changes in the data that complicate the projection methodology. An attempt has been made to improve and correct these data where possible. The counts shown in this report for certain measures may not tie to similar counts reported elsewhere.

## ANALYSIS AND HIGHLIGHTS

- Total headcount enrollment for the University of Hawai'i Community Colleges decreased 2.6% in Fall 2005, to measure 25,233 students (Table 2 & Figure 1). **Headcount enrollment is forecast (middle series) to decrease only slightly in Fall 2006, to 25,168 students, and to increase very slowly through 2012, at an annual average rate of about 0.5%.**
- The high projection series allows for a 3.2% increase in enrollment for Fall 2006, to 26,038 students, with continued growth through Fall 2012 at an average annual rate of 1.1% (Table 1 & Figure 3). The low series allows for a 4.2% decline in enrollment in Fall 2006, to 24,175, with continued mild decline at an annual rate of 0.7%. The two alternate series provide for moderate enrollment growth on the high side and moderate decline on the low side.
- Enrollment grew rapidly from the founding of the UH Community Colleges in 1965 through Fall 1976, as new campuses were added and as the "baby boom" generation entered college (Figure 4). Except for a brief spike in 1981-82, enrollment remained more or less stable between Fall 1976 and Fall 1988. Beginning in Fall 1989, enrollment began to grow rapidly, reaching the historical peak of 27,905 students in Fall 1994. Enrollment then declined for a number of years, falling to 23,777 students by Fall 2000. Since then, enrollment has entered another cycle of moderate growth. The long-term trend since Fall 1975 has been mildly upward. Due to recent decline, the enrollment forecast for the UH Community Colleges as a whole lies somewhat below this long term-trend line.

- Hawai'i public high school seniors are forecast by the Hawai'i Department of Education to increase mildly through academic year 2006-2007, then to decline somewhat (Appendix A). The going rate of public high school students into the UH Community Colleges has been fairly stable in recent years at between 22.5% and 23%. Therefore, direct public entrants may be expected to increase only modestly through Fall 2007 (Table 2). Similarly, the WICHE forecast for Hawai'i private high school graduates shows the number increasing through Academic Year 2007-08, then declining (Appendix B). The number of direct private entrants into the UH Community Colleges may be expected to remain near current levels through the forecast period. Enrollment of first-time students from the U.S. mainland and foreign countries may be expected to increase moderately, helping to offset decline in local students. Overall, little growth in first-time freshmen may be anticipated.
- In contrast to first-time enrollment, transfer and returning enrollment show greater growth potential. However, a change in business practice at the UH Community Colleges has impacted the definition of a transfer student, thereby altering the way transfers are counted. This change increases the uncertainty of the transfer forecast and ultimately may require a modification of the methodology employed.
- Increases in tuition rates across the UH system will go into effect in Fall 2006. The impact these increases will have on enrollment is difficult to estimate. However, one possible result is that students may choose to avoid relatively higher tuition costs at the UH four-year campuses by enrolling at the UH Community Colleges. If realized, this pattern would result in higher than otherwise anticipated enrollments at the UH Community Colleges, especially in general education programs.

## **PROJECTIONS BY CAMPUS**

**Hawai'i Community College:** After three years of strong growth, headcount enrollment at Hawai'i Community College declined 2.6% in Fall 2005, to 2,377 students (Table A2 & Figure A1). Overall, enrollment has shown a moderate upward trend since the mid-1970s (Figure A4). However, since Fall 1995, enrollment has remained between 2,000 and 2,500 students. Although first-time student enrollment has been stagnant since Fall 1999, transfer and returning student enrollment have posted solid gains. Continued growth in these areas gives the enrollment forecast some upward momentum (middle series). However, only modest gains may be anticipated. The high series allows for more robust growth, while the low series provides for moderate decline (Table A1 & Figure A3).

**Honolulu Community College:** Headcount enrollment at Honolulu Community College declined 3.5% in Fall 2005 to 4,183 students (Table B2 & Figure B1). Enrollment has declined four out of the last seven years and is down 12.3% since Fall 1999. The long-term enrollment profile shows some peaks and valleys, but overall total enrollment has changed little since Fall 1976 (Figure B4). Mobilization of military forces based on O'ahu may contribute to continued softness in enrollment demand in the immediate future. The middle series forecast calls for stable enrollment, with the high series allowing for some recovery and growth and the low series continuing the recent downward trend (Table B1 & Figure B3).

**Kapi'olani Community College:** Headcount enrollment at Kapi'olani Community College increased mildly in Fall 2005 to measure 7,289 students (Table C2 & Figure C1). First-time and transfer enrollment have declined since Fall 1999, while returning and continuing enrollment have increased. These shifts in enrollment between registration status categories reflect, at least in part, changes in data element definition and processing subsequent to the migration to the Banner registration system. Furthermore, these shifts increase uncertainty in the enrollment forecast, since the projection methodology is based upon registration status. However, although enrollment has fluctuated in recent years, the overall enrollment level has not changed very much since the early 1990s (Figure C4). Consequently, the enrollment forecast (middle series) calls for only moderate growth through Fall 2012. The high series provides for more robust growth, while the low series allows for moderate decline (Table C1 & Figure C3).

**Kaua'i Community College:** Headcount enrollment at Kaua'i Community College declined 5.2% in Fall 2005 to measure 1,059 students (Table D2 & Figure D1). Enrollment has declined for three consecutive fall semesters, and is down 33% since Hurricane Iniki struck the island in 1992. Overall, the enrollment level in Fall 2005 was about the same as in Fall 1975 (Figure D4). Due to the recent downward momentum, enrollment has been forecast (middle series) to decline mildly through the projection period. The high series allows for modest recovery (though not to pre-Iniki levels), while the low series provides for continued decline.

**Leeward Community College:** Headcount enrollment at Leeward Community College declined 5.8% in Fall 2005 to measure 5,709 students, the second consecutive decline in fall semester enrollment (Table E2 & Figure E1). As with a number of other UH community colleges, enrollment has been up and down over the last several decades but overall has changed little since the mid-1970s (Figure E4). Due to the recent decline in enrollment, the forecast (middle series) calls for a 1.3% decrease in Fall 2006, with enrollment leveling out at about 5,600. The high series calls for a 3.7% increase in Fall 2006 with subsequent modest growth, while the low series provides for continued moderate decline.

**Maui Community College:** Headcount enrollment at Maui Community College declined 3.1% in Fall 2005 to measure 2,903 students (Table F2 & Figure F1). Despite this decline, Maui CC continues to show a long-term growth trend in enrollment (Figure F4). Population increases and economic growth on the island of Maui may continue to generate strong demand. Overall enrollment has been forecast (middle series) to follow the long-term trend, declining slightly in Fall 2006, to 2,884 students, and then increasing at an annual rate of 1.6% through Fall 2012. The alternate series allow for more robust growth on the high side and moderate decline in Fall 2006 followed by slight growth on the low side.

**Windward Community College:** Headcount enrollment at Windward Community College declined 3.5% in Fall 2005 to measure 1,713 students (Table G2 & Figure G1). Prior to the recent growth, which began in Fall 2001, enrollment had been stable for more than 20 years at around 1,500 students (Figure G4). Due to the recent decline, enrollment has been forecast (middle series) to decline through Fall 2007, then increase slowly. The high series provides for a 5.1% increase in enrollment in Fall 2006 with growth approaching 2,000 students by 2012, while the low series provides for continued moderate decline.

University of Hawai'i Community Colleges  
Credit Students

Figure 1  
Historical and Projected Headcount Enrollment

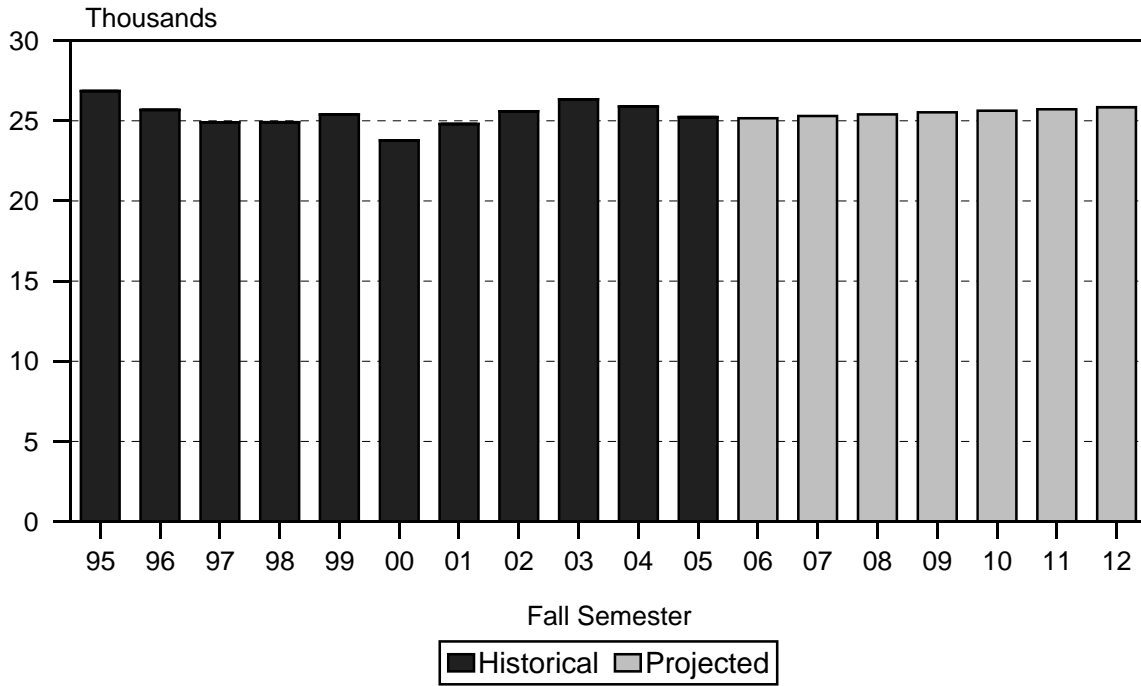
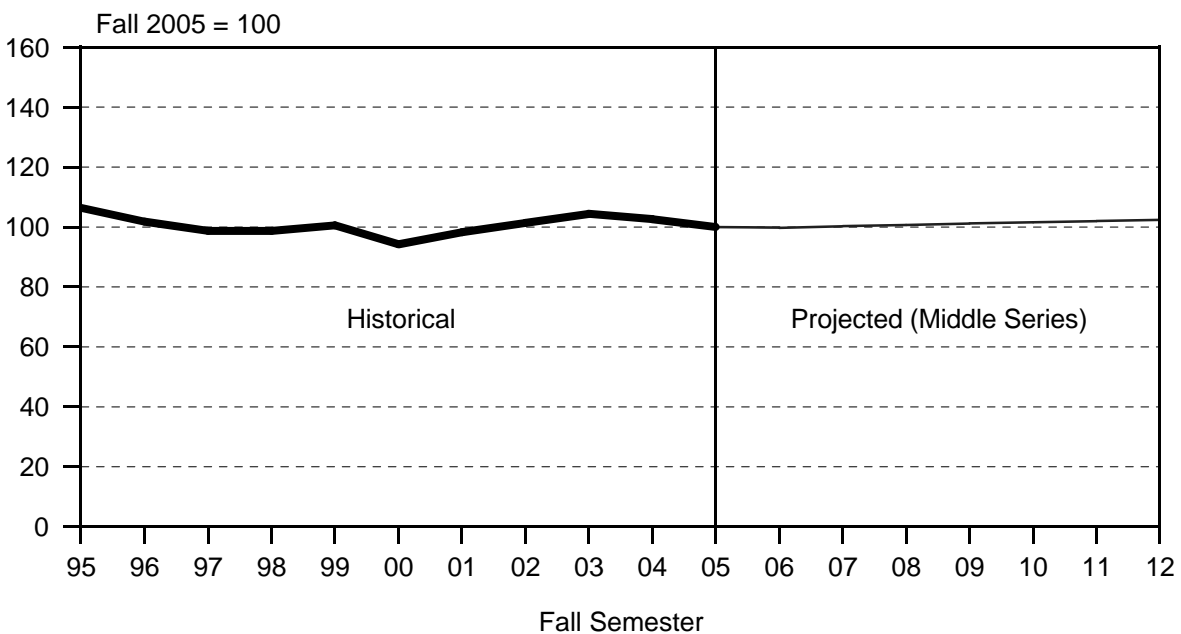


Figure 2  
Enrollment Index



University of Hawai'i Community Colleges  
Credit Students

Figure 3  
High, Middle and Low Projection Series

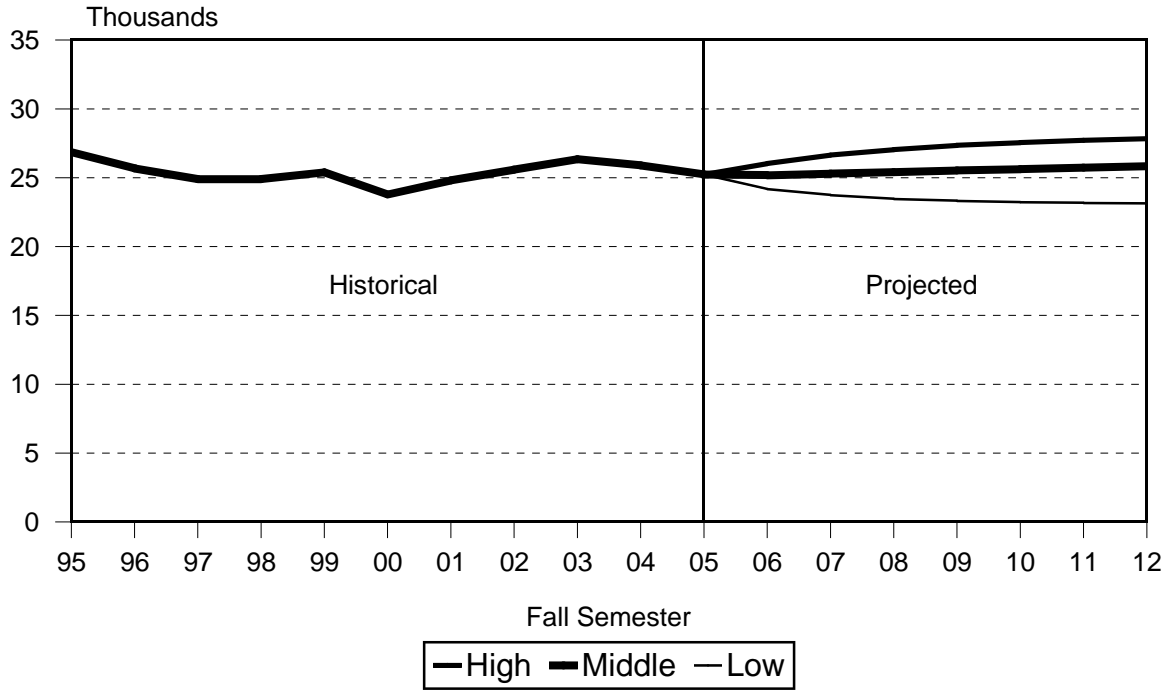


Figure 4  
Historical and Projected Headcount Enrollment

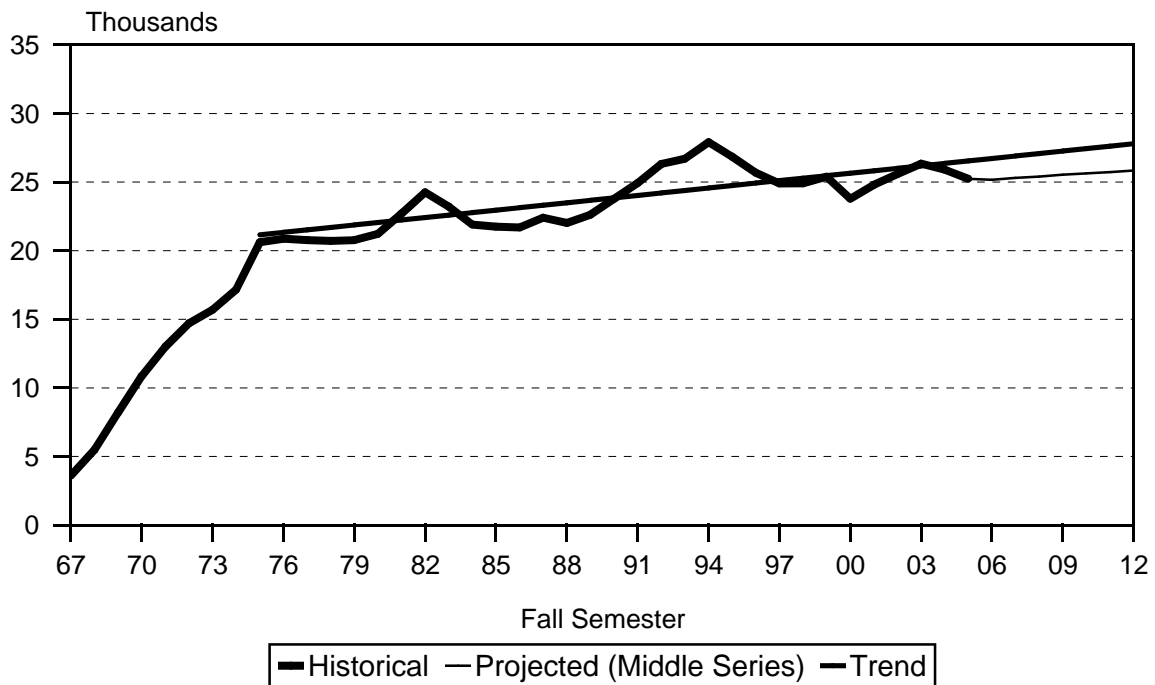




TABLE 1  
HEADCOUNT ENROLLMENT OF CREDIT STUDENTS  
LOW, MIDDLE AND HIGH PROJECTION SERIES  
UNIVERSITY OF HAWAI'I COMMUNITY COLLEGES  
FALL 2005 TO FALL 2012

PROJECTION SERIES	ACTUAL	PROJECTED						
	2005	2006	2007	2008	2009	2010	2011	2012
<b>HIGH SERIES TOTAL .....</b>	<b>25,233</b>	<b>26,038</b>	<b>26,653</b>	<b>27,045</b>	<b>27,361</b>	<b>27,561</b>	<b>27,713</b>	<b>27,863</b>
Program .....								
Liberal Arts .....	12,114	12,592	12,906	13,085	13,220	13,308	13,382	13,454
Career & Technical Ed .....	7,238	7,519	7,721	7,848	7,951	8,017	8,065	8,112
Unclassified .....	2,487	2,425	2,450	2,471	2,498	2,518	2,530	2,544
Home-Based at Other UH ..	3,394	3,502	3,576	3,641	3,692	3,718	3,736	3,753
Registration Status .....								
First Time .....	5,449	5,674	5,694	5,620	5,602	5,585	5,577	5,589
Transfer .....	4,079	3,662	3,727	3,792	3,858	3,882	3,908	3,933
Returning .....	2,344	2,416	2,456	2,497	2,538	2,580	2,621	2,662
Continuing .....	13,361	14,286	14,776	15,136	15,363	15,514	15,607	15,679
<b>MIDDLE SERIES TOTAL 1/ .</b>	<b>25,233</b>	<b>25,168</b>	<b>25,306</b>	<b>25,402</b>	<b>25,537</b>	<b>25,631</b>	<b>25,730</b>	<b>25,843</b>
Program .....								
Liberal Arts .....	12,114	12,321	12,486	12,566	12,643	12,698	12,752	12,810
Career & Technical Ed .....	7,238	7,339	7,429	7,485	7,538	7,574	7,603	7,635
Unclassified .....	2,487	2,276	2,240	2,226	2,237	2,244	2,252	2,267
Home-Based at Other UH ..	3,394	3,232	3,151	3,125	3,119	3,115	3,123	3,131
Registration Status .....								
First Time .....	5,449	5,531	5,558	5,476	5,463	5,441	5,435	5,447
Transfer .....	4,079	3,463	3,507	3,550	3,593	3,606	3,619	3,631
Returning .....	2,344	2,267	2,307	2,348	2,389	2,431	2,472	2,513
Continuing .....	13,361	13,907	13,934	14,028	14,092	14,153	14,204	14,252
<b>LOW SERIES TOTAL .....</b>	<b>25,233</b>	<b>24,175</b>	<b>23,729</b>	<b>23,452</b>	<b>23,316</b>	<b>23,219</b>	<b>23,165</b>	<b>23,139</b>
Program .....								
Liberal Arts .....	12,114	11,792	11,649	11,535	11,476	11,428	11,403	11,389
Career & Technical Ed .....	7,238	7,121	7,071	7,030	7,009	6,997	6,989	6,986
Unclassified .....	2,487	2,175	2,095	2,055	2,044	2,033	2,027	2,026
Home-Based at Other UH ..	3,394	3,087	2,914	2,832	2,787	2,761	2,746	2,738
Registration Status .....								
First Time .....	5,449	5,171	5,186	5,103	5,087	5,062	5,052	5,059
Transfer .....	4,079	3,163	3,189	3,215	3,242	3,242	3,242	3,242
Returning .....	2,344	2,192	2,192	2,192	2,192	2,192	2,192	2,192
Continuing .....	13,361	13,649	13,162	12,942	12,795	12,723	12,679	12,646

1/ The remaining tables in the report use the Middle Projection Series.

TABLE 2  
HEADCOUNT ENROLLMENT OF CREDIT STUDENTS, BY REGISTRATION STATUS  
MIDDLE PROJECTION SERIES  
UNIVERSITY OF HAWAI'I, COMMUNITY COLLEGES  
FALL 1999 TO FALL 2012

REGISTRATION STATUS AND PROGRAM AREA	HISTORICAL							PROJECTED						
	1999	2000	2001	2002	2003	2004	2005	2006	2007	2008	2009	2010	2011	2012
UH Community College Total .....	25,390	23,777	24,809	25,593	26,344	25,898	25,233	25,168	25,306	25,402	25,537	25,631	25,730	25,843
Liberal Arts 1/ .....	14,073	13,324	13,675	14,446	13,705	12,603	12,114	12,321	12,486	12,566	12,643	12,698	12,752	12,810
Career & Technical Ed 1/ .....	9,122	8,440	8,446	7,877	7,374	7,478	7,238	7,339	7,429	7,485	7,538	7,574	7,603	7,635
Unclassified .....	2,195	2,013	2,688	3,270	2,405	2,482	2,487	2,276	2,240	2,226	2,237	2,244	2,252	2,267
Home-Based at Other UH 2/ .....					2,860	3,335	3,394	3,232	3,151	3,125	3,119	3,115	3,123	3,131
First-Time By HS Background 3/ ...	6,176	5,253	5,661	5,602	5,276	5,110	5,449	5,531	5,558	5,476	5,463	5,441	5,435	5,447
Direct from HI Public HS .....	2,767	2,478	2,338	2,448	2,386	2,414	2,509	2,586	2,612	2,484	2,473	2,456	2,455	2,462
Direct from HI Private HS .....	372	360	286	309	289	272	313	296	292	335	329	319	310	310
U.S. Mainland .....	563	481	630	508	398	362	489	498	501	503	505	508	510	513
Foreign & U.S. Related Areas .....	330	340	370	317	320	237	292	308	310	311	313	315	317	319
Other First-Time Freshmen 4/ .....	2,144	1,594	2,037	2,020	1,883	1,825	1,846	1,843	1,843	1,843	1,843	1,843	1,843	1,843
First-Time, By Program .....	6,176	5,253	5,661	5,602	5,276	5,110	5,449	5,531	5,558	5,476	5,463	5,441	5,435	5,447
Liberal Arts .....	3,416	2,901	3,128	3,288	3,166	2,795	2,880	2,995	3,006	2,957	2,945	2,933	2,928	2,931
Career & Technical Ed .....	2,059	1,779	1,771	1,518	1,409	1,509	1,447	1,565	1,574	1,554	1,552	1,549	1,548	1,554
Unclassified .....	701	573	762	796	633	781	867	767	772	763	763	759	759	762
Home-Based at Other UH .....					68	25	255	204	206	202	203	200	200	200
Transfer .....	3,019	3,034	3,484	3,758	2,758	2,281	4,079	3,463	3,507	3,550	3,593	3,606	3,619	3,631
Liberal Arts .....	1,761	1,740	1,912	2,039	1,540	1,180	1,420	1,531	1,553	1,572	1,592	1,601	1,608	1,616
Career & Technical Ed .....	800	813	806	921	688	684	958	872	880	888	896	898	900	901
Unclassified .....	458	481	766	798	386	363	413	273	279	284	290	290	290	291
Home-Based at Other UH .....					144	54	1,288	787	795	806	815	817	821	823
Returning .....	1,959	1,940	2,276	2,303	2,152	2,024	2,344	2,267	2,307	2,348	2,389	2,431	2,472	2,513
Liberal Arts .....	1,119	1,075	1,247	1,279	1,212	1,062	1,195	1,176	1,196	1,216	1,237	1,257	1,278	1,297
Career & Technical Ed .....	617	637	686	581	598	579	714	677	688	700	712	724	736	749
Unclassified .....	223	228	343	443	299	365	391	374	382	389	396	406	413	421
Home-Based at Other UH .....					43	18	44	40	41	43	44	44	45	46

TABLE 2 (cont.)

REGISTRATION STATUS AND PROGRAM AREA	HISTORICAL							PROJECTED						
	1999	2000	2001	2002	2003	2004	2005	2006	2007	2008	2009	2010	2011	2012
Continuing .....	14,236	13,550	13,388	13,930	16,158	16,483	13,361	13,907	13,934	14,028	14,092	14,153	14,204	14,252
Liberal Arts .....	7,777	7,608	7,388	7,840	7,787	7,566	6,619	6,619	6,731	6,821	6,869	6,907	6,938	6,966
Career & Technical Ed .....	5,646	5,211	5,183	4,857	4,679	4,706	4,119	4,225	4,287	4,343	4,378	4,403	4,419	4,431
Unclassified .....	813	731	817	1,233	1,087	973	816	862	807	790	788	789	790	793
Home-Based at Other UH .....					2,605	3,238	1,807	2,201	2,109	2,074	2,057	2,054	2,057	2,062

1/ Industrial Ed at Honolulu CC moved from Liberal Studies to Public Services in Fall 2000. Totals for prior years have not been adjusted.

2/ Students whose home-campus, as defined in Banner / ODS, is not the campus at which registered for classes. Data first available in Fall 2003.

3/ Breakouts for Fall 2002 to Fall 2004 have been adjusted with information taken from Datamart; therefore, counts may not tie to those reported elsewhere.

4/ Includes GED, students from Hawai'i who are not recent high school graduates and records with invalid high school code.

TABLE 3  
 ENROLLMENT INDEX: HEADCOUNT ENROLLMENT OF CREDIT STUDENTS  
 MIDDLE PROJECTION SERIES  
 UNIVERSITY OF HAWAI'I, COMMUNITY COLLEGES  
 FALL 1999 TO FALL 2012  
 (FALL 2005 = 100)

CAMPUS	HISTORICAL							PROJECTED						
	1999	2000	2001	2002	2003	2004	2005	2006	2007	2008	2009	2010	2011	2012
UH COMMUNITY COLLEGES ...	101	94	98	101	104	103	100	100	100	101	101	102	102	102
HAWAI'I CC .....	96	88	87	92	99	103	100	100	100	101	103	104	104	105
HONOLULU CC .....	114	107	111	107	101	104	100	101	102	102	102	101	101	101
KAPI'OLANI CC .....	100	93	97	97	103	98	100	100	101	101	102	103	103	104
KAUA'I CC .....	108	99	112	116	114	105	100	99	98	98	98	97	97	97
LEEWARD CC .....	98	92	97	104	109	106	100	99	99	98	98	98	98	98
MAUI CC .....	99	92	93	103	103	103	100	99	102	104	107	108	109	110
WINDWARD CC .....	88	85	91	103	109	104	100	99	99	99	99	99	100	101

TABLE 4  
HEADCOUNT ENROLLMENT OF CREDIT STUDENTS, BY CAMPUS AND REGISTRATION STATUS  
MIDDLE PROJECTION SERIES  
UNIVERSITY OF HAWAI'I, COMMUNITY COLLEGES  
FALL 1999 TO FALL 2012

CAMPUS AND REGISTRATION STATUS	HISTORICAL							PROJECTED						
	1999	2000	2001	2002	2003	2004	2005	2006	2007	2008	2009	2010	2011	2012
UHCC TOTAL .....	25,390	23,777	24,809	25,593	26,344	25,898	25,233	25,168	25,306	25,402	25,537	25,631	25,730	25,843
First Time .....	6,176	5,253	5,661	5,602	5,276	5,110	5,449	5,531	5,558	5,476	5,463	5,441	5,435	5,447
Transfer .....	3,019	3,034	3,484	3,758	2,758	2,281	4,079	3,463	3,507	3,550	3,593	3,606	3,619	3,631
Returning .....	1,959	1,940	2,276	2,303	2,152	2,024	2,344	2,267	2,307	2,348	2,389	2,431	2,472	2,513
Continuing .....	14,236	13,550	13,388	13,930	16,158	16,483	13,361	13,907	13,934	14,028	14,092	14,153	14,204	14,252
HAWAI'I CC .....	2,279	2,090	2,075	2,182	2,346	2,440	2,377	2,378	2,387	2,412	2,443	2,461	2,480	2,502
First Time .....	712	628	593	574	674	703	592	609	606	614	619	625	631	641
Transfer .....	167	182	169	222	179	180	291	224	227	230	233	236	240	243
Returning .....	179	167	204	207	231	216	239	243	251	260	269	278	287	296
Continuing .....	1,221	1,113	1,109	1,179	1,262	1,341	1,255	1,302	1,303	1,308	1,322	1,322	1,322	1,322
HONOLULU CC .....	4,769	4,487	4,653	4,478	4,238	4,336	4,183	4,235	4,269	4,261	4,254	4,244	4,233	4,228
First Time .....	1,080	887	958	813	709	766	957	981	991	966	964	957	952	952
Transfer .....	535	497	515	733	507	577	1,129	738	738	738	738	738	738	738
Returning .....	347	379	369	352	281	264	313	286	286	286	286	286	286	286
Continuing .....	2,807	2,724	2,811	2,580	2,741	2,729	1,784	2,230	2,254	2,271	2,266	2,263	2,257	2,252
KAPI'OLANI CC .....	7,254	6,760	7,081	7,041	7,491	7,174	7,289	7,293	7,343	7,381	7,433	7,485	7,539	7,601
First Time .....	1,351	1,171	1,298	1,199	1,150	988	1,181	1,185	1,199	1,175	1,169	1,157	1,147	1,143
Transfer .....	1,242	1,153	1,382	1,350	961	551	938	938	938	938	938	938	938	938
Returning .....	512	459	534	488	497	612	740	680	712	744	776	809	841	873
Continuing .....	4,149	3,977	3,867	4,004	4,883	5,023	4,430	4,490	4,494	4,524	4,550	4,581	4,613	4,647
KAUA'I CC .....	1,142	1,052	1,185	1,224	1,210	1,117	1,059	1,047	1,037	1,037	1,034	1,031	1,030	1,029
First Time .....	256	245	266	352	338	283	337	338	327	329	326	323	323	322
Transfer .....	119	108	174	87	35	72	79	79	79	79	79	79	79	79
Returning .....	165	135	175	172	166	104	124	124	124	124	124	124	124	124
Continuing .....	602	564	570	613	671	658	519	506	507	505	505	505	504	504

TABLE 4 (cont.)

CAMPUS AND REGISTRATION STATUS	HISTORICAL							PROJECTED						
	1999	2000	2001	2002	2003	2004	2005	2006	2007	2008	2009	2010	2011	2012
LEEWARD CC .....	5,570	5,259	5,562	5,918	6,201	6,060	5,709	5,635	5,628	5,594	5,576	5,567	5,573	5,580
First Time .....	1,290	1,084	1,270	1,370	1,382	1,333	1,298	1,352	1,371	1,334	1,331	1,330	1,336	1,343
Transfer .....	661	747	860	851	628	504	862	862	862	862	862	862	862	862
Returning .....	366	386	443	458	415	375	387	381	381	381	381	381	381	381
Continuing .....	3,253	3,042	2,989	3,239	3,776	3,848	3,162	3,040	3,014	3,017	3,002	2,994	2,994	2,994
MAUI CC .....	2,862	2,678	2,699	2,989	2,985	2,996	2,903	2,884	2,953	3,028	3,102	3,141	3,164	3,180
First Time .....	1,123	923	880	891	632	686	695	683	693	692	692	693	693	695
Transfer .....	112	147	157	202	235	216	472	351	382	413	444	444	444	444
Returning .....	212	232	367	432	385	298	410	410	410	410	410	410	410	410
Continuing .....	1,415	1,376	1,295	1,464	1,733	1,796	1,326	1,440	1,468	1,513	1,556	1,594	1,617	1,631
WINDWARD CC .....	1,514	1,451	1,554	1,761	1,873	1,775	1,713	1,696	1,689	1,689	1,695	1,702	1,711	1,723
First Time .....	364	315	396	403	391	351	389	383	371	366	362	356	353	351
Transfer .....	183	200	227	313	213	181	308	271	281	290	299	309	318	327
Returning .....	178	182	184	194	177	155	131	143	143	143	143	143	143	143
Continuing .....	789	754	747	851	1,092	1,088	885	899	894	890	891	894	897	902

Note: Continuing includes records with invalid data on registration status.

TABLE 5  
HEADCOUNT ENROLLMENT OF CREDIT STUDENTS, BY CAMPUS AND PROGRAM AREA  
MIDDLE PROJECTION SERIES  
UNIVERSITY OF HAWAI'I, COMMUNITY COLLEGES  
FALL 1999 TO FALL 2012

CAMPUS AND PROGRAM AREA	HISTORICAL							PROJECTED						
	1999	2000	2001	2002	2003	2004	2005	2006	2007	2008	2009	2010	2011	2012
UHCC TOTAL .....	25,390	23,777	24,809	25,593	26,344	25,898	25,233	25,168	25,306	25,402	25,537	25,631	25,730	25,843
Liberal Arts 1/ .....	14,073	13,324	13,675	14,446	13,705	12,603	12,114	12,321	12,486	12,566	12,643	12,698	12,752	12,810
Career & Technical Ed 1/ ....	9,122	8,440	8,446	7,877	7,374	7,478	7,238	7,339	7,429	7,485	7,538	7,574	7,603	7,635
Unclassified .....	2,195	2,013	2,688	3,270	2,405	2,482	2,487	2,276	2,240	2,226	2,237	2,244	2,252	2,267
Home-Based at Other UH 2/					2,860	3,335	3,394	3,232	3,151	3,125	3,119	3,115	3,123	3,131
HAWAI'I CC .....	2,279	2,090	2,075	2,182	2,346	2,440	2,377	2,378	2,387	2,412	2,443	2,461	2,480	2,502
Liberal Arts .....	890	865	848	865	867	871	780	774	774	781	790	797	803	809
Career & Technical Ed .....	1,271	1,126	1,137	1,210	1,261	1,298	1,261	1,255	1,257	1,268	1,283	1,293	1,304	1,316
Unclassified .....	118	99	90	107	114	111	128	122	123	124	126	126	127	130
Home-Based at Other UH ....					104	160	208	227	233	239	244	245	246	247
HONOLULU CC .....	4,769	4,487	4,653	4,478	4,238	4,336	4,183	4,235	4,269	4,261	4,254	4,244	4,233	4,228
Liberal Arts 1/ .....	1,715	1,589	1,657	1,535	1,157	1,114	1,075	1,101	1,115	1,113	1,111	1,108	1,105	1,104
Career & Technical Ed 1/ ....	2,751	2,624	2,681	2,586	2,286	2,276	2,232	2,262	2,284	2,281	2,278	2,273	2,267	2,264
Unclassified .....	303	274	315	357	185	177	166	125	125	124	124	124	124	124
Home-Based at Other UH ....					610	769	710	747	745	743	741	739	737	736
KAPI'OLANI CC .....	7,254	6,760	7,081	7,041	7,491	7,174	7,289	7,293	7,343	7,381	7,433	7,485	7,539	7,601
Liberal Arts .....	4,535	4,276	4,343	4,325	4,156	3,549	3,516	3,556	3,606	3,640	3,676	3,708	3,740	3,775
Career & Technical Ed .....	2,296	2,135	2,068	1,878	1,720	1,692	1,545	1,530	1,529	1,531	1,538	1,547	1,557	1,569
Unclassified .....	423	349	670	838	610	797	944	918	925	927	934	943	950	959
Home-Based at Other UH ....					1,005	1,136	1,284	1,289	1,283	1,283	1,285	1,287	1,292	1,298
KAUA'I CC .....	1,142	1,052	1,185	1,224	1,210	1,117	1,059	1,047	1,037	1,037	1,034	1,031	1,030	1,029
Liberal Arts .....	506	513	545	592	565	517	486	477	467	463	459	456	455	454
Career & Technical Ed .....	398	356	362	284	285	318	345	361	368	374	376	377	377	377
Unclassified .....	238	183	278	348	323	245	196	181	175	174	173	172	172	172
Home-Based at Other UH ....					37	37	32	28	27	26	26	26	26	26
LEEWARD CC .....	5,570	5,259	5,562	5,918	6,201	6,060	5,709	5,635	5,628	5,594	5,576	5,567	5,573	5,580
Liberal Arts .....	3,991	3,779	3,958	4,312	4,203	3,936	3,736	3,812	3,866	3,869	3,869	3,868	3,872	3,877
Career & Technical Ed .....	1,167	1,078	1,112	1,062	945	932	862	885	901	905	906	906	907	908
Unclassified .....	412	402	492	544	352	388	401	353	333	319	314	312	312	313
Home-Based at Other UH ....					701	804	710	585	528	501	487	481	482	482

TABLE 5 (cont.)

CAMPUS AND PROGRAM AREA	HISTORICAL							PROJECTED						
	1999	2000	2001	2002	2003	2004	2005	2006	2007	2008	2009	2010	2011	2012
MAUI CC .....	2,862	2,678	2,699	2,989	2,985	2,996	2,903	2,884	2,953	3,028	3,102	3,141	3,164	3,180
Liberal Arts .....	1,129	1,058	988	1,291	1,258	1,195	1,183	1,221	1,258	1,288	1,317	1,333	1,342	1,347
Career & Technical Ed .....	1,166	1,073	1,064	838	857	949	974	1,028	1,072	1,108	1,139	1,159	1,172	1,182
Unclassified .....	567	547	647	860	675	665	568	500	490	492	500	502	502	503
Home-Based at Other UH .....					195	187	178	135	133	140	146	147	148	148
WINDWARD CC .....	1,514	1,451	1,554	1,761	1,873	1,775	1,713	1,696	1,689	1,689	1,695	1,702	1,711	1,723
Liberal Arts .....	1,307	1,244	1,336	1,526	1,499	1,421	1,338	1,380	1,400	1,412	1,421	1,428	1,435	1,444
Career & Technical Ed .....	73	48	22	19	20	13	19	18	18	18	18	19	19	19
Unclassified .....	134	159	196	216	146	99	84	77	69	66	66	65	65	66
Home-Based at Other UH .....					208	242	272	221	202	193	190	190	192	194

1/ Industrial Ed at Honolulu CC moved from Liberal Studies to Public Services in Fall 2000. Totals for prior years have not been adjusted and may not tie to figures reported elsewhere.  
 2/ Students whose home-campus, as defined in Banner / ODS, is not the campus at which registered for classes. Data first available in Fall 2003.



TABLE 6  
HEADCOUNT ENROLLMENT OF CREDIT STUDENTS, BY ATTENDANCE STATUS  
MIDDLE PROJECTION SERIES  
UNIVERSITY OF HAWAII, COMMUNITY COLLEGES  
FALL 2005 TO FALL 2012

ATTENDANCE STATUS	ACTUAL	PROJECTED						
	2005	2006	2007	2008	2009	2010	2011	2012
UHCC TOTAL .....	25,233	25,168	25,306	25,402	25,537	25,631	25,730	25,843
Full-time .....	9,935	9,904	9,960	9,997	10,050	10,086	10,127	10,171
Part-time .....	15,298	15,264	15,346	15,405	15,487	15,545	15,603	15,672
HAWAII CC .....	2,377	2,378	2,387	2,412	2,443	2,461	2,480	2,502
Full-time .....	1,085	1,085	1,090	1,101	1,115	1,123	1,132	1,142
Part-time .....	1,292	1,293	1,297	1,311	1,328	1,338	1,348	1,360
HONOLULU CC .....	4,183	4,235	4,269	4,261	4,254	4,244	4,233	4,228
Full-time .....	1,536	1,555	1,568	1,565	1,562	1,558	1,554	1,553
Part-time .....	2,647	2,680	2,701	2,696	2,692	2,686	2,679	2,675
KAPI'OLANI CC .....	7,289	7,293	7,343	7,381	7,433	7,485	7,539	7,601
Full-time .....	2,640	2,641	2,660	2,673	2,692	2,711	2,731	2,753
Part-time .....	4,649	4,652	4,683	4,708	4,741	4,774	4,808	4,848
KAUA'I CC .....	1,059	1,047	1,037	1,037	1,034	1,031	1,030	1,029
Full-time .....	406	401	398	398	396	395	395	394
Part-time .....	653	646	639	639	638	636	635	635
LEEWARD CC .....	5,709	5,635	5,628	5,594	5,576	5,567	5,573	5,580
Full-time .....	2,376	2,345	2,342	2,328	2,321	2,317	2,319	2,322
Part-time .....	3,333	3,290	3,286	3,266	3,255	3,250	3,254	3,258
MAUI CC .....	2,903	2,884	2,953	3,028	3,102	3,141	3,164	3,180
Full-time .....	1,163	1,155	1,183	1,213	1,243	1,258	1,268	1,274
Part-time .....	1,740	1,729	1,770	1,815	1,859	1,883	1,896	1,906
WINDWARD CC .....	1,713	1,696	1,689	1,689	1,695	1,702	1,711	1,723
Full-time .....	729	722	719	719	721	724	728	733
Part-time .....	984	974	970	970	974	978	983	990

Note: Part-Time includes records with invalid data on attendance status.

Hawai'i Community College  
Credit Students

Figure A1  
Historical and Projected Headcount Enrollment

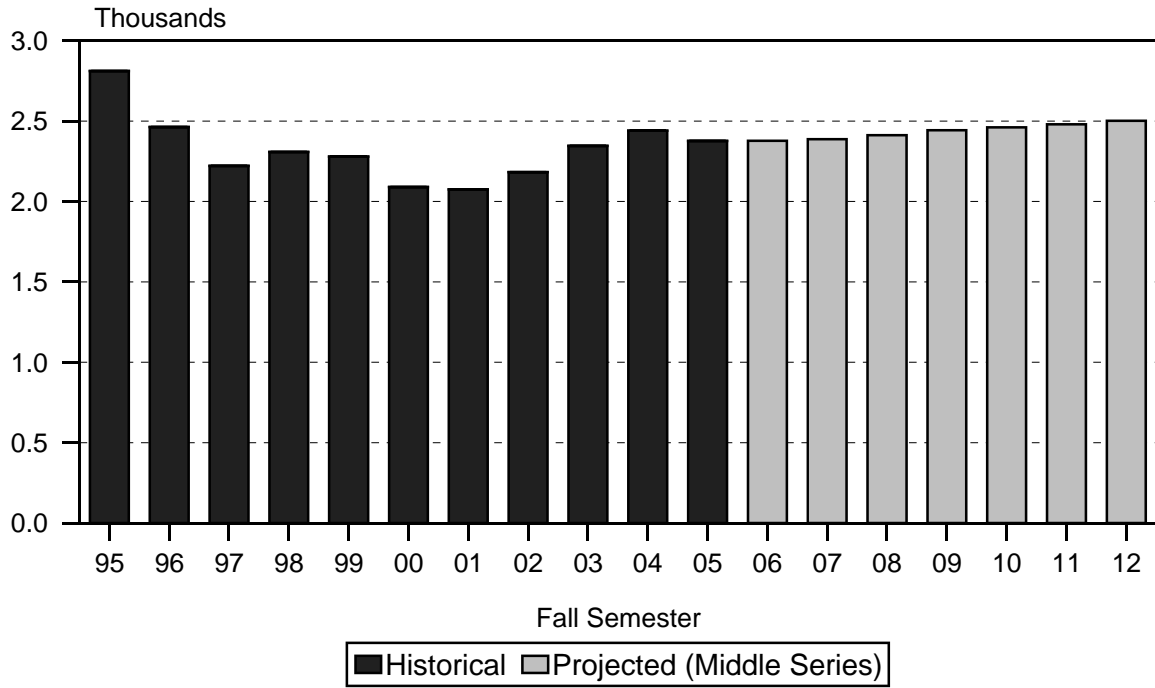
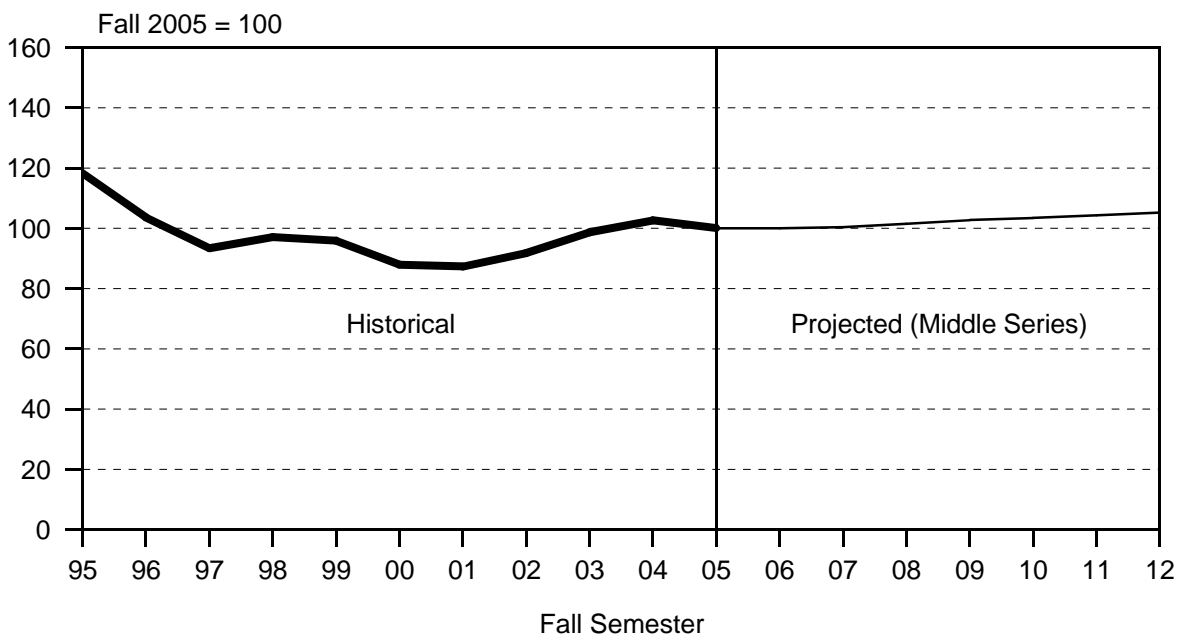


Figure A2  
Enrollment Index



Hawai'i Community College  
Credit Students

Figure A3  
High, Middle and Low Projection Series

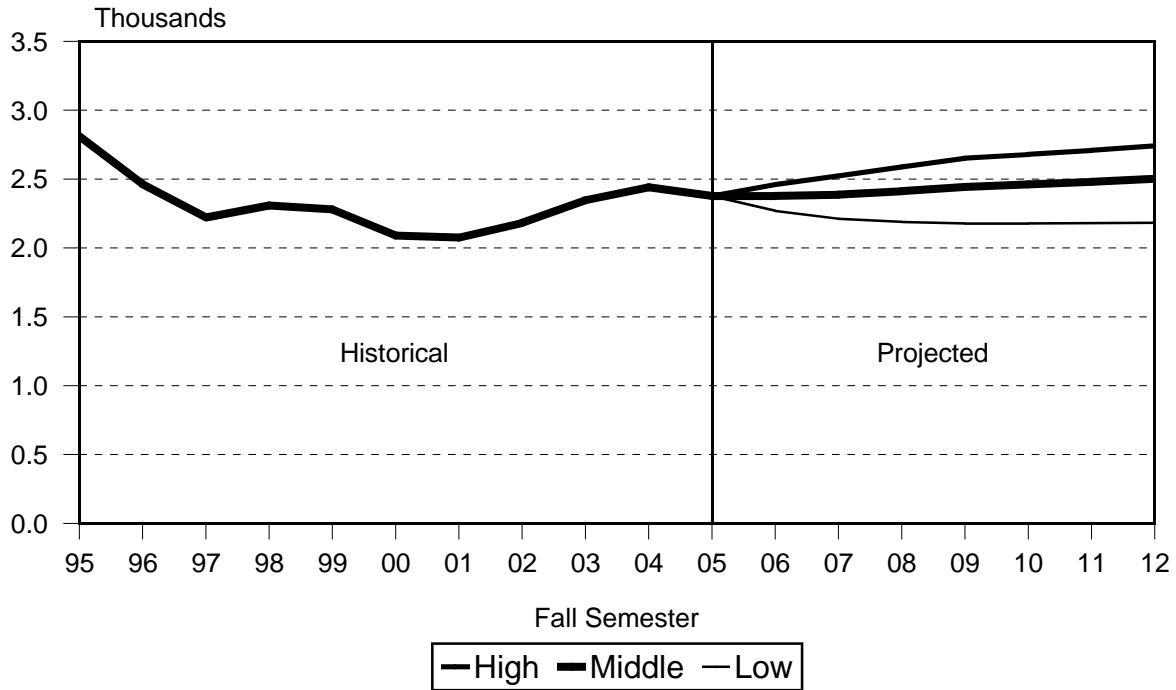


Figure A4  
Historical and Projected Headcount Enrollment

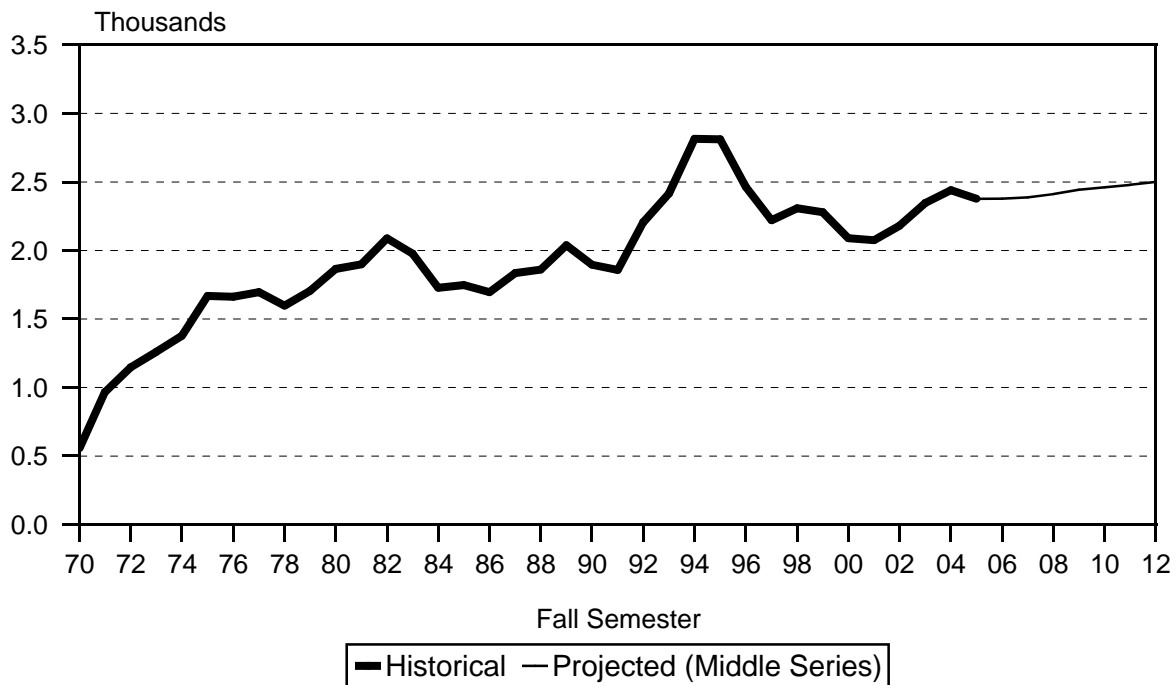


TABLE A1  
HEADCOUNT ENROLLMENT OF CREDIT STUDENTS  
LOW, MIDDLE AND HIGH PROJECTION SERIES  
HAWAI'I COMMUNITY COLLEGE  
FALL 2005 TO FALL 2012

PROJECTION SERIES	ACTUAL	PROJECTED						
	2005	2006	2007	2008	2009	2010	2011	2012
<b>HIGH SERIES TOTAL .....</b>	<b>2,377</b>	<b>2,460</b>	<b>2,523</b>	<b>2,588</b>	<b>2,652</b>	<b>2,680</b>	<b>2,709</b>	<b>2,741</b>
Program:								
Liberal Arts .....	780	811	834	857	878	888	899	909
Career & Technical Ed .....	1,261	1,287	1,310	1,337	1,366	1,380	1,394	1,410
Unclassified .....	128	127	130	133	136	138	138	140
Home-Based at Other UH 1/....	208	235	249	261	272	274	278	282
Registration Status:								
First Time .....	592	654	651	659	664	670	676	686
Transfer .....	291	253	266	279	293	306	320	333
Returning .....	239	243	251	260	269	278	287	296
Continuing .....	1,255	1,310	1,355	1,390	1,426	1,426	1,426	1,426
<b>MIDDLE SERIES TOTAL 2/ .....</b>	<b>2,377</b>	<b>2,378</b>	<b>2,387</b>	<b>2,412</b>	<b>2,443</b>	<b>2,461</b>	<b>2,480</b>	<b>2,502</b>
By Program:								
Liberal Arts .....	780	774	774	781	790	797	803	809
Career & Technical Ed .....	1,261	1,255	1,257	1,268	1,283	1,293	1,304	1,316
Unclassified .....	128	122	123	124	126	126	127	130
Home-Based at Other UH 1/....	208	227	233	239	244	245	246	247
Registration Status:								
First Time .....	592	609	606	614	619	625	631	641
Transfer .....	291	224	227	230	233	236	240	243
Returning .....	239	243	251	260	269	278	287	296
Continuing .....	1,255	1,302	1,303	1,308	1,322	1,322	1,322	1,322
<b>LOW SERIES TOTAL .....</b>	<b>2,377</b>	<b>2,269</b>	<b>2,211</b>	<b>2,188</b>	<b>2,177</b>	<b>2,178</b>	<b>2,180</b>	<b>2,183</b>
Program:								
Liberal Arts .....	780	761	748	743	740	740	741	742
Career & Technical Ed .....	1,261	1,233	1,213	1,205	1,200	1,201	1,202	1,203
Unclassified .....	128	104	99	98	98	98	98	99
Home-Based at Other UH 1/....	208	171	151	142	139	139	139	139
Registration Status:								
First Time .....	592	566	558	563	564	565	567	570
Transfer .....	291	218	218	218	218	218	218	218
Returning .....	239	223	223	223	223	223	223	223
Continuing .....	1,255	1,262	1,212	1,184	1,172	1,172	1,172	1,172

1/ Students whose home-campus, as defined in Banner / ODS, is not Hawai'i Community College.

2/ The remaining tables in the report use the Middle Projection Series.

TABLE A2  
HEADCOUNT ENROLLMENT OF CREDIT STUDENTS, BY REGISTRATION STATUS  
MIDDLE PROJECTION SERIES  
HAWAI'I COMMUNITY COLLEGE  
FALL 1999 TO FALL 2012

REGISTRATION STATUS	HISTORICAL							PROJECTED						
	1999	2000	2001	2002	2003	2004	2005	2006	2007	2008	2009	2010	2011	2012
TOTAL .....	2,279	2,090	2,075	2,182	2,346	2,440	2,377	2,378	2,387	2,412	2,443	2,461	2,480	2,502
Liberal Arts .....	890	865	848	865	867	871	780	774	774	781	790	797	803	809
Career & Technical Ed .....	1,271	1,126	1,137	1,210	1,261	1,298	1,261	1,255	1,257	1,268	1,283	1,293	1,304	1,316
Unclassified .....	118	99	90	107	114	111	128	122	123	124	126	126	127	130
Home-Based at Other UH 1/.....					104	160	208	227	233	239	244	245	246	247
First-Time By HS Background 2/ ..	712	628	593	574	674	703	592	609	606	614	619	625	631	641
Direct from HI Public HS .....	253	247	194	231	254	275	279	273	265	268	269	271	273	278
Direct from HI Private HS .....	16	14	10	8	9	11	14	13	13	15	15	14	14	14
U.S. Mainland .....	42	58	63	40	49	59	51	60	63	65	67	70	72	75
Foreign & U.S. Related Areas ...	25	30	32	26	41	46	25	40	42	43	45	47	49	51
Other First-Time Freshmen 3/ ..	376	279	294	269	321	312	223	223	223	223	223	223	223	223
First-Time, By Program .....	712	628	593	574	674	703	592	609	606	614	619	625	631	641
Liberal Arts .....	277	262	240	244	243	255	203	215	214	217	218	221	223	226
Career & Technical Ed .....	362	304	300	295	375	372	292	311	310	314	316	320	323	328
Unclassified .....	73	62	53	35	48	72	86	74	73	74	75	74	75	77
Home-Based at Other UH 1/.....					8	4	11	9	9	9	10	10	10	10
Transfer .....	167	182	169	222	179	180	291	224	227	230	233	236	240	243
Liberal Arts .....	74	86	80	99	65	91	67	82	84	85	86	87	88	89
Career & Technical Ed .....	72	82	78	103	90	73	110	88	89	90	91	92	94	95
Unclassified .....	21	14	11	20	20	13	12	6	6	6	6	6	6	6
Home-Based at Other UH 1/.....					4	3	102	48	48	49	50	51	52	53
Returning .....	179	167	204	207	231	216	239	243	251	260	269	278	287	296
Liberal Arts .....	76	66	82	88	83	67	80	78	81	84	87	90	93	95
Career & Technical Ed .....	101	94	115	113	127	142	141	152	157	162	168	173	179	185
Unclassified .....	2	7	7	6	17	6	12	9	9	9	9	10	10	11
Home-Based at Other UH 1/.....					4	1	6	4	4	5	5	5	5	5

TABLE A2 (cont.)

REGISTRATION STATUS	HISTORICAL							PROJECTED						
	1999	2000	2001	2002	2003	2004	2005	2006	2007	2008	2009	2010	2011	2012
Continuing .....	1,221	1,113	1,109	1,179	1,262	1,341	1,255	1,302	1,303	1,308	1,322	1,322	1,322	1,322
Liberal Arts .....	463	451	446	434	476	458	430	399	395	395	399	399	399	399
Career & Technical Ed .....	736	646	644	699	669	711	718	704	701	702	708	708	708	708
Unclassified .....	22	16	19	46	29	20	18	33	35	35	36	36	36	36
Home-Based at Other UH 1/.....					88	152	89	166	172	176	179	179	179	179

1/ Students whose home-campus, as defined in Banner / ODS, is not Hawai'i Community College.

2/ Breakouts for Fall 2002 to Fall 2004 have been adjusted with information taken from Datamart; therefore, counts may not tie to those reported elsewhere.

3/ Includes GED, students from Hawai'i who are not recent high school graduates and records with invalid high school code.

TABLE A3  
HEADCOUNT ENROLLMENT, BY PROGRAM  
MIDDLE PROJECTION SERIES  
HAWAI'I COMMUNITY COLLEGE  
FALL 2005 TO FALL 2012

PROGRAM	ACTUAL	PROJECTED						
	2005	2006	2007	2008	2009	2010	2011	2012
Total Students .....	2,377	2,378	2,387	2,412	2,443	2,461	2,480	2,502
General & Pre Prof Ed .....	780	774	774	781	790	797	803	809
Liberal Arts .....	780	774	774	781	790	797	803	809
Career & Technical Ed .....	1,261	1,255	1,257	1,268	1,283	1,293	1,304	1,316
Business .....	229	228	228	231	233	235	237	239
Food Services .....	77	77	77	77	78	79	80	80
Health Services .....	334	332	333	336	340	342	345	349
Public Services .....	190	189	189	191	193	195	196	198
Technology .....	431	429	430	433	439	442	446	450
Unclassified .....	336	349	356	363	370	371	373	377
Regular Unclassified 1/ .....	48	56	44	46	46	46	46	48
Home-Based Other UH 2/ .....	208	227	233	239	244	245	246	247
Special Students .....	80	66	79	78	80	80	81	82
Early Admit .....	80	66	79	78	80	80	81	82

1/ Includes records with invalid data on education level.

2/ Students whose home-campus, as defined in Banner / ODS, is not Hawai'i Community College.

TABLE A4  
 STUDENT SEMESTER HOURS OFFERED, BY PROGRAM  
 MIDDLE PROJECTION SERIES  
 HAWAI'I COMMUNITY COLLEGE  
 FALL 2005 TO FALL 2012

PROGRAM	ACTUAL	PROJECTED						
	2005	2006	2007	2008	2009	2010	2011	2012
Total .....	22,207	22,141	22,183	22,392	22,667	22,842	23,024	23,226
General Education .....	14,603	14,553	14,592	14,735	14,919	15,030	15,146	15,280
Humanities .....	8,409	8,388	8,402	8,487	8,593	8,659	8,724	8,802
Natural Sciences .....	3,687	3,668	3,673	3,705	3,750	3,779	3,808	3,842
Social Sciences .....	2,353	2,350	2,364	2,390	2,420	2,436	2,457	2,477
Other General Education .	154	147	153	153	156	156	157	159
Career & Technical Ed .....	7,604	7,588	7,591	7,657	7,748	7,812	7,878	7,946
Business .....	1,917	1,913	1,911	1,933	1,952	1,969	1,985	2,003
Food Services .....	652	652	652	652	660	669	677	677
Health Services .....	798	796	798	805	814	819	827	836
Public Services .....	1,293	1,295	1,291	1,306	1,321	1,334	1,341	1,354
Technology .....	2,944	2,932	2,939	2,961	3,001	3,021	3,048	3,076

TABLE A5  
 FULL-TIME EQUIVALENT COURSE ENROLLMENT SERVED, BY PROGRAM  
 MIDDLE PROJECTION SERIES  
 HAWAI'I COMMUNITY COLLEGE  
 FALL 2005 TO FALL 2012

PROGRAM	ACTUAL	PROJECTED						
	2005	2006	2007	2008	2009	2010	2011	2012
Total .....	1,476	1,476	1,478	1,492	1,510	1,522	1,534	1,549
General Education .....	970	971	973	982	994	1,001	1,010	1,019
Humanities .....	559	559	560	566	573	577	582	587
Natural Sciences .....	244	245	245	247	250	252	254	256
Social Sciences .....	157	157	158	159	161	162	164	165
Other General Education .	10	10	10	10	10	10	10	11
Career & Technical Ed .....	506	505	505	510	516	521	524	530
Business .....	128	128	127	129	130	131	132	134
Food Services .....	43	43	43	43	44	45	45	45
Health Services .....	53	53	53	54	54	55	55	56
Public Services .....	86	86	86	87	88	89	89	90
Technology .....	196	195	196	197	200	201	203	205



Honolulu Community College  
Credit Students

Figure B1  
Historical and Projected Headcount Enrollment

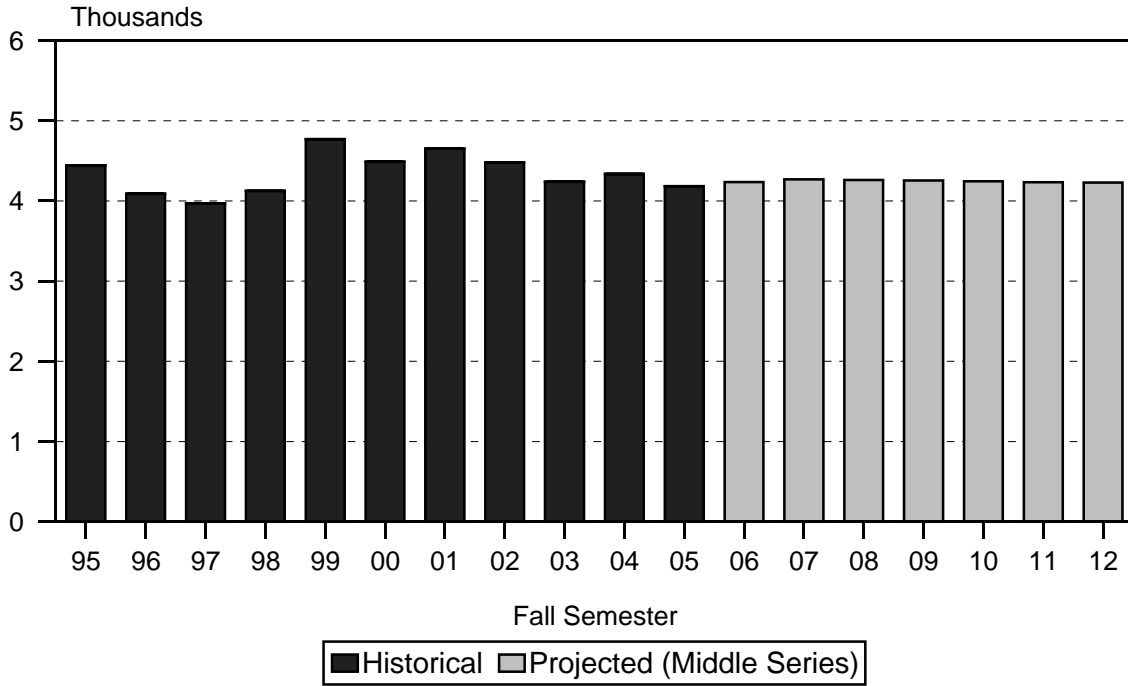
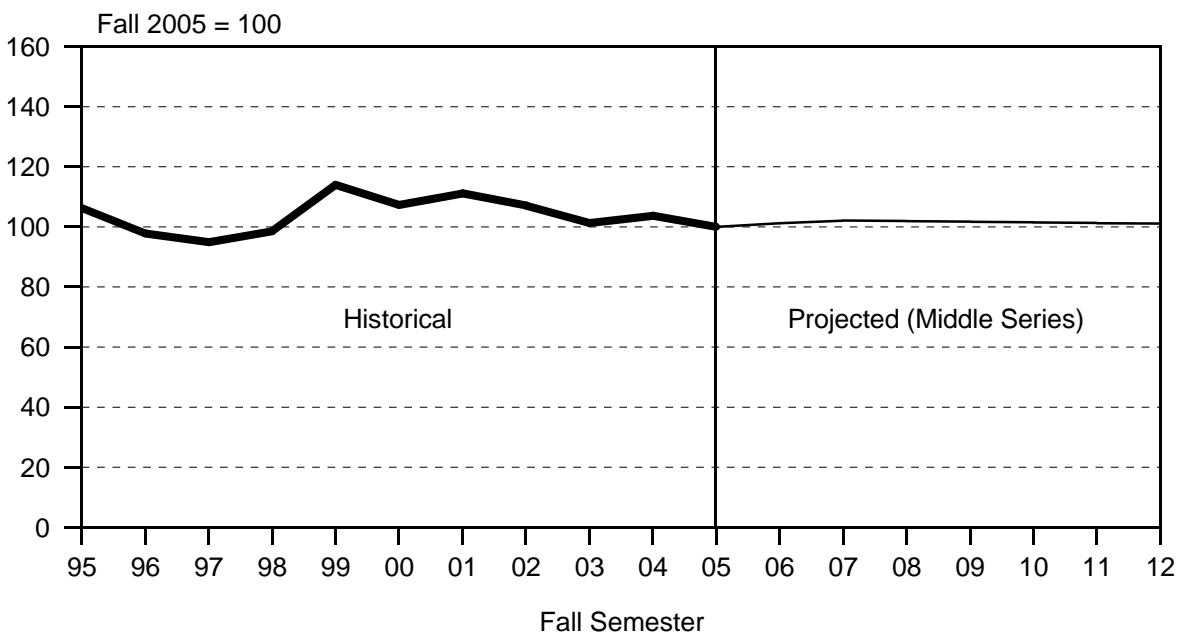


Figure B2  
Enrollment Index



Honolulu Community College  
Credit Students

Figure B3  
High, Middle and Low Projection Series

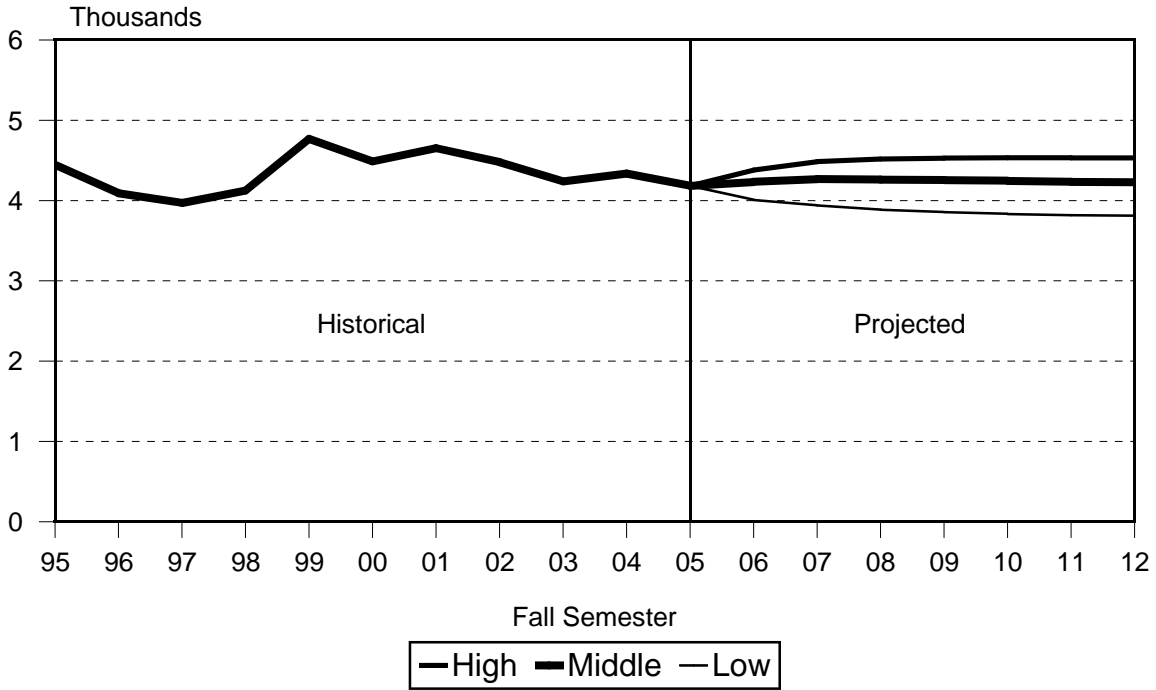
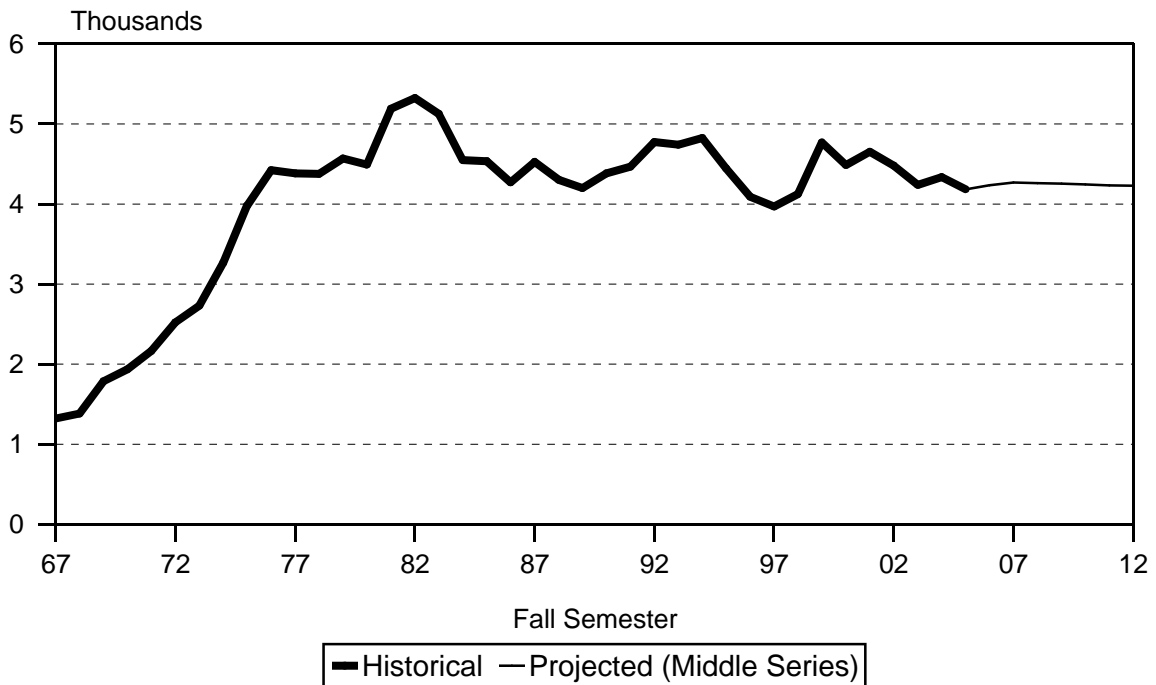


Figure B4  
Historical and Projected Headcount Enrollment



**TABLE B1  
HEADCOUNT ENROLLMENT OF CREDIT STUDENTS  
LOW, MIDDLE AND HIGH PROJECTION SERIES  
HONOLULU COMMUNITY COLLEGE  
FALL 2005 TO FALL 2012**

PROJECTION SERIES	ACTUAL	PROJECTED						
	2005	2006	2007	2008	2009	2010	2011	2012
<b>HIGH SERIES TOTAL .....</b>	<b>4,183</b>	<b>4,379</b>	<b>4,486</b>	<b>4,518</b>	<b>4,529</b>	<b>4,533</b>	<b>4,531</b>	<b>4,531</b>
Program:								
Liberal Arts .....	1,075	1,148	1,181	1,188	1,189	1,189	1,187	1,187
Career & Technical Ed .....	2,232	2,337	2,397	2,415	2,422	2,424	2,422	2,422
Unclassified .....	166	129	131	131	130	130	130	129
Home-Based at Other UH 1/..	710	765	777	784	788	790	792	793
Registration Status:								
First Time .....	957	983	990	968	963	960	955	956
Transfer .....	1,129	853	853	853	853	853	853	853
Returning .....	313	313	313	313	313	313	313	313
Continuing .....	1,784	2,230	2,330	2,384	2,400	2,407	2,410	2,409
<b>MIDDLE SERIES TOTAL 2/ .....</b>	<b>4,183</b>	<b>4,235</b>	<b>4,269</b>	<b>4,261</b>	<b>4,254</b>	<b>4,244</b>	<b>4,233</b>	<b>4,228</b>
Program:								
Liberal Arts .....	1,075	1,101	1,115	1,113	1,111	1,108	1,105	1,104
Career & Technical Ed .....	2,232	2,262	2,284	2,281	2,278	2,273	2,267	2,264
Unclassified .....	166	125	125	124	124	124	124	124
Home-Based at Other UH 1/..	710	747	745	743	741	739	737	736
Registration Status:								
First Time .....	957	981	991	966	964	957	952	952
Transfer .....	1,129	738	738	738	738	738	738	738
Returning .....	313	286	286	286	286	286	286	286
Continuing .....	1,784	2,230	2,254	2,271	2,266	2,263	2,257	2,252
<b>LOW SERIES TOTAL .....</b>	<b>4,183</b>	<b>4,008</b>	<b>3,940</b>	<b>3,885</b>	<b>3,855</b>	<b>3,832</b>	<b>3,817</b>	<b>3,808</b>
Program:								
Liberal Arts .....	1,075	975	944	925	919	914	912	911
Career & Technical Ed .....	2,232	2,177	2,154	2,129	2,113	2,102	2,094	2,090
Unclassified .....	166	117	117	115	115	114	114	113
Home-Based at Other UH 1/..	710	739	725	716	708	702	697	694
Registration Status:								
First Time .....	957	833	841	818	816	810	807	806
Transfer .....	1,129	738	738	738	738	738	738	738
Returning .....	313	286	286	286	286	286	286	286
Continuing .....	1,784	2,151	2,075	2,043	2,015	1,998	1,986	1,978

1/ Students whose home-campus, as defined in Banner / ODS, is not Honolulu Community College.

2/ The remaining tables in the report use the Middle Projection Series.

TABLE B2  
HEADCOUNT ENROLLMENT OF CREDIT STUDENTS, BY REGISTRATION STATUS  
MIDDLE PROJECTION SERIES  
HONOLULU COMMUNITY COLLEGE  
FALL 1999 TO FALL 2012

REGISTRATION STATUS	HISTORICAL							PROJECTED						
	1999	2000	2001	2002	2003	2004	2005	2006	2007	2008	2009	2010	2011	2012
TOTAL 1/ .....	4,769	4,487	4,653	4,478	4,238	4,336	4,183	4,235	4,269	4,261	4,254	4,244	4,233	4,228
Liberal Arts 2/ .....	1,715	1,589	1,657	1,535	1,157	1,114	1,075	1,101	1,115	1,113	1,111	1,108	1,105	1,104
Career & Technical Ed 2/ .....	2,751	2,624	2,681	2,586	2,286	2,276	2,232	2,262	2,284	2,281	2,278	2,273	2,267	2,264
Unclassified .....	303	274	315	357	185	177	166	125	125	124	124	124	124	124
Home-Based at Other UH 3/.....					610	769	710	747	745	743	741	739	737	736
First-Time By HS Background 4/ .	1,080	887	958	813	709	766	957	981	991	966	964	957	952	952
Direct from HI Public HS .....	415	377	305	357	337	396	408	425	435	405	404	398	394	394
Direct from HI Private HS .....	44	41	33	38	21	43	25	32	32	37	36	35	34	34
U.S. Mainland .....	125	71	110	81	36	45	90	90	90	90	90	90	90	90
Foreign & U.S. Related Areas ...	79	67	85	36	43	28	41	41	41	41	41	41	41	41
Other First-Time Freshmen 5/ ..	417	331	425	301	272	254	393	393	393	393	393	393	393	393
First-Time, By Program .....	1,080	887	958	813	709	766	957	981	991	966	964	957	952	952
Liberal Arts .....	342	278	291	307	240	233	285	308	311	303	302	300	298	298
Career & Technical Ed .....	638	530	554	435	402	472	509	561	567	552	551	547	544	544
Unclassified .....	100	79	113	71	59	57	77	53	53	52	52	52	52	52
Home-Based at Other UH 3/.....					8	4	86	59	60	59	59	58	58	58
Transfer .....	535	497	515	733	507	577	1,129	738	738	738	738	738	738	738
Liberal Arts .....	225	185	210	337	168	214	298	238	238	238	238	238	238	238
Career & Technical Ed .....	240	237	213	276	283	305	509	378	378	378	378	378	378	378
Unclassified .....	70	75	92	120	38	36	51	19	19	19	19	19	19	19
Home-Based at Other UH 3/.....					18	22	271	103	103	103	103	103	103	103
Returning .....	347	379	369	352	281	264	313	286	286	286	286	286	286	286
Liberal Arts .....	144	159	166	142	108	97	106	104	104	104	104	104	104	104
Career & Technical Ed .....	176	187	177	170	142	139	181	153	153	153	153	153	153	153
Unclassified .....	27	33	26	40	21	21	18	20	20	20	20	20	20	20
Home-Based at Other UH 3/.....					10	7	8	9	9	9	9	9	9	9

TABLE B2 (cont.)

REGISTRATION STATUS	HISTORICAL							PROJECTED						
	1999	2000	2001	2002	2003	2004	2005	2006	2007	2008	2009	2010	2011	2012
Continuing .....	2,807	2,724	2,811	2,580	2,741	2,729	1,784	2,230	2,254	2,271	2,266	2,263	2,257	2,252
Liberal Arts .....	1,004	967	990	749	641	570	386	451	462	468	467	466	465	464
Career & Technical Ed .....	1,697	1,670	1,737	1,705	1,459	1,360	1,033	1,170	1,186	1,198	1,196	1,195	1,192	1,189
Unclassified .....	106	87	84	126	67	63	20	33	33	33	33	33	33	33
Home-Based at Other UH 3/.....					574	736	345	576	573	572	570	569	567	566

1/ SOCAD (military continuing education) students added to general enrollment counts, beginning Fall 1999.

2/ Industrial Ed moved from Liberal Arts to Career & Tech Ed in Fall 2000. Numbers for prior years not revised.

3/ Students whose home-campus, as defined in Banner / ODS, is not Honolulu Community College.

4/ Breakouts for Fall 2002 to Fall 2004 have been adjusted with information taken from Datamart; therefore, counts may not tie to those reported elsewhere.

5/ Includes GED, students from Hawai'i who are not recent high school graduates and records with invalid high school code.

TABLE B3  
HEADCOUNT ENROLLMENT, BY PROGRAM  
MIDDLE PROJECTION SERIES  
HONOLULU COMMUNITY COLLEGE  
FALL 2005 TO FALL 2012

PROGRAM	ACTUAL	PROJECTED						
	2005	2006	2007	2008	2009	2010	2011	2012
Total Students .....	4,183	4,235	4,269	4,261	4,254	4,244	4,233	4,228
General & Pre-Prof Ed .....	1,075	1,101	1,115	1,113	1,111	1,108	1,105	1,104
Liberal Arts .....	1,075	1,101	1,115	1,113	1,111	1,108	1,105	1,104
Career & Technical Ed .....	2,232	2,262	2,284	2,281	2,278	2,273	2,267	2,264
Public Services .....	613	621	627	626	626	624	623	622
Technology .....	1,619	1,641	1,657	1,655	1,652	1,649	1,644	1,642
Unclassified .....	876	872	870	867	865	863	861	860
Regular Unclassified 1/ .....	107	85	85	85	85	85	85	85
Home-Based Other UH 2/ .....	710	747	745	743	741	739	737	736
Special Students .....	59	40	40	39	39	39	39	39
Early Admit .....	59	40	40	39	39	39	39	39

1/ Includes records with invalid data on education level.

2/ Students whose home-campus, as defined in Banner / ODS, is not Honolulu Community College.

TABLE B4  
 STUDENT SEMESTER HOURS OFFERED, BY PROGRAM  
 MIDDLE PROJECTION SERIES  
 HONOLULU COMMUNITY COLLEGE  
 FALL 2005 TO FALL 2012

PROGRAM	ACTUAL	PROJECTED						
	2005	2006	2007	2008	2009	2010	2011	2012
Total .....	35,989	36,294	36,626	36,564	36,508	36,419	36,327	36,281
General Education .....	21,012	21,107	21,297	21,255	21,220	21,167	21,114	21,089
Humanities .....	10,061	9,993	10,087	10,067	10,051	10,026	10,001	9,989
Natural Sciences .....	7,378	7,497	7,560	7,547	7,534	7,515	7,496	7,487
Social Sciences .....	3,447	3,490	3,522	3,513	3,508	3,499	3,491	3,487
Other General Education	126	127	128	128	127	127	126	126
Career & Technical Ed .....	14,977	15,187	15,329	15,309	15,288	15,252	15,213	15,192
Business .....	1,353	1,370	1,383	1,381	1,380	1,376	1,373	1,371
Health Services .....	363	371	373	373	373	370	370	369
Public Services .....	3,542	3,593	3,626	3,620	3,619	3,607	3,602	3,596
Technology .....	9,039	9,164	9,251	9,240	9,222	9,206	9,177	9,166
Other Vocational .....	680	689	696	695	694	693	691	690

TABLE B5  
 FULL-TIME EQUIVALENT COURSE ENROLLMENT SERVED, BY PROGRAM  
 MIDDLE PROJECTION SERIES  
 HONOLULU COMMUNITY COLLEGE  
 FALL 2005 TO FALL 2012

PROGRAM	ACTUAL	PROJECTED						
	2005	2006	2007	2008	2009	2010	2011	2012
Total .....	2,401	2,420	2,442	2,437	2,433	2,427	2,423	2,418
General Education .....	1,402	1,407	1,420	1,417	1,414	1,410	1,408	1,405
Humanities .....	670	666	672	671	670	668	667	666
Natural Sciences .....	493	500	504	503	502	501	500	499
Social Sciences .....	231	233	235	234	234	233	233	232
Other General Education	8	8	9	9	8	8	8	8
Career & Technical Ed .....	999	1,013	1,022	1,020	1,019	1,017	1,015	1,013
Business .....	90	91	92	92	92	92	92	91
Health Services .....	24	25	25	25	25	25	25	25
Public Services .....	235	240	242	241	241	240	240	240
Technology .....	605	611	617	616	615	614	612	611
Other Vocational .....	45	46	46	46	46	46	46	46

Kapi'olani Community College  
Credit Students

Figure C1  
Historical and Projected Headcount Enrollment

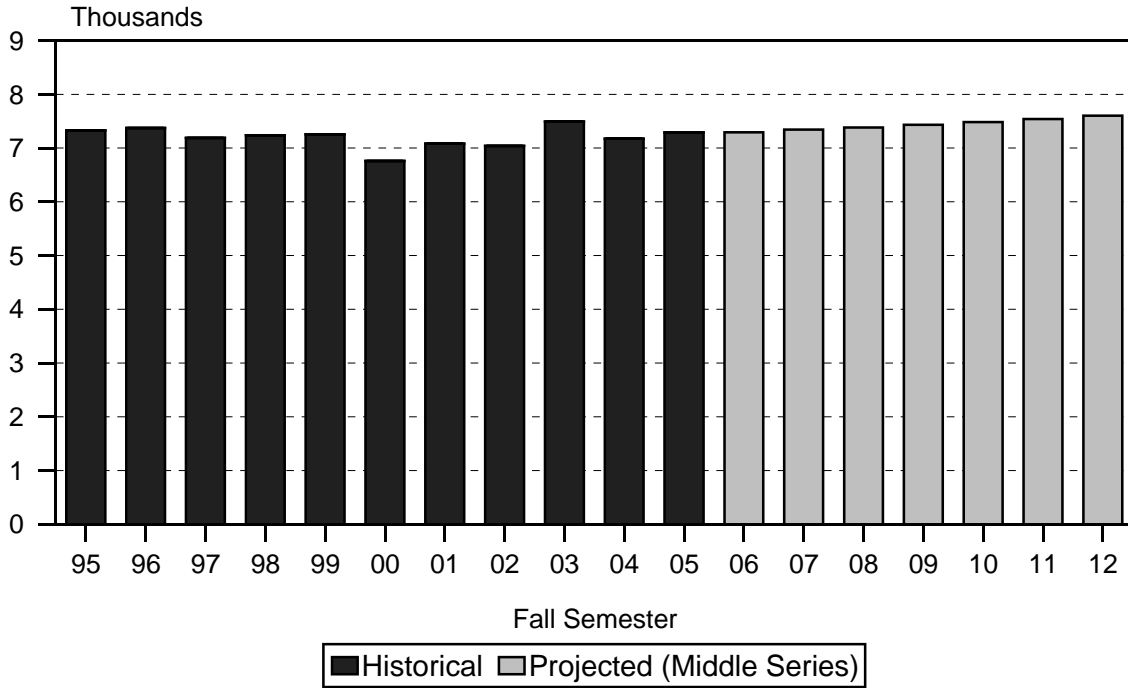
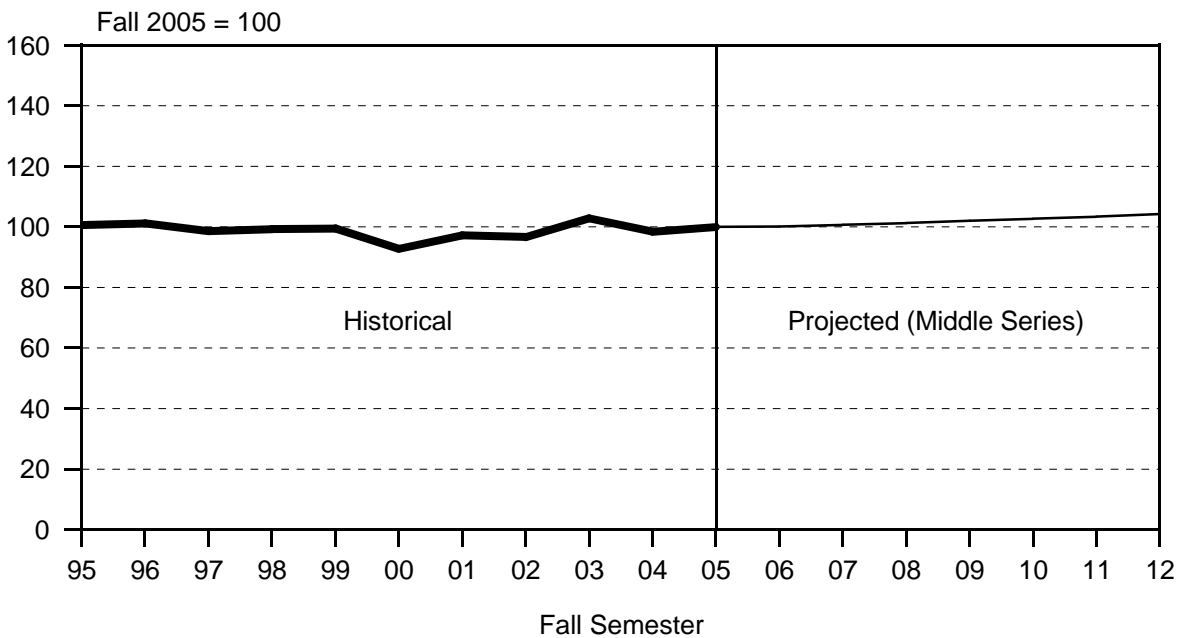


Figure C2  
Enrollment Index





Kapi'olani Community College  
Credit Students

Figure C3  
High, Middle and Low Projection Series

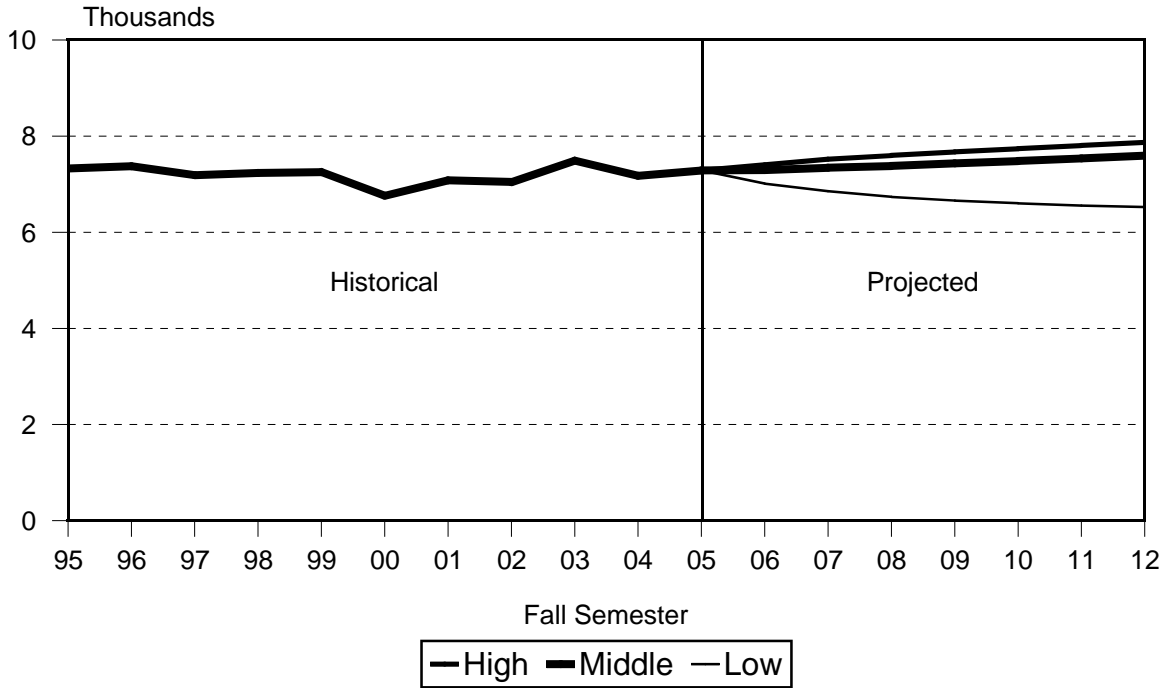
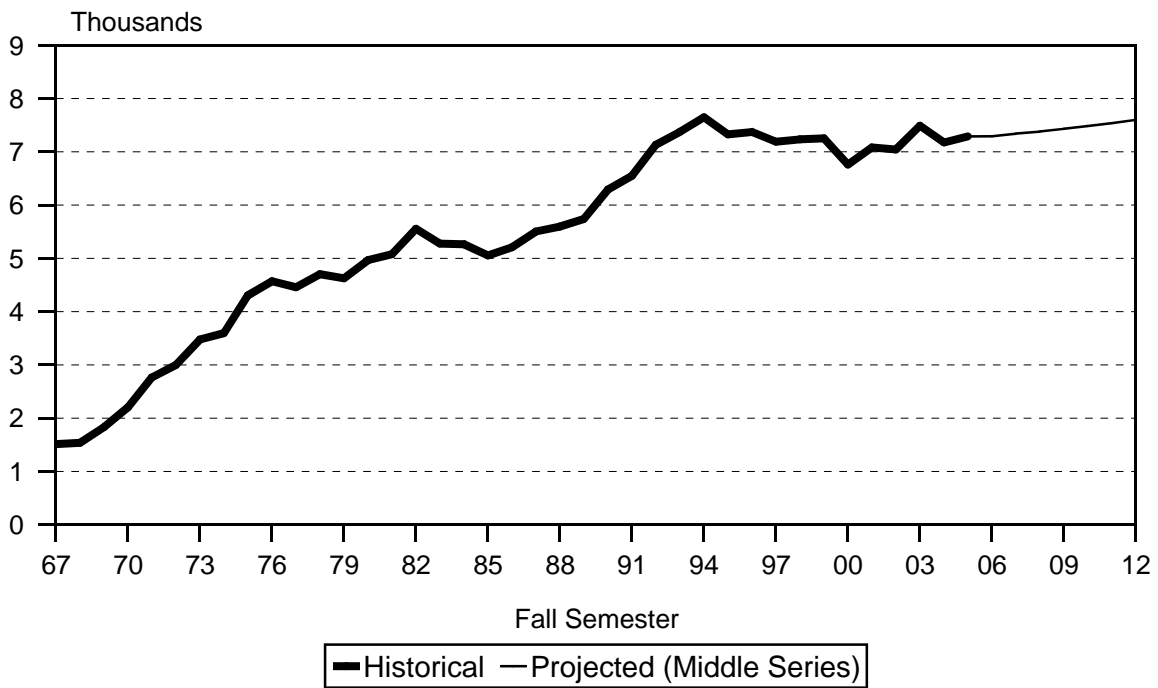


Figure C4  
Historical and Projected Headcount Enrollment



**TABLE C1**  
**HEADCOUNT ENROLLMENT OF CREDIT STUDENTS**  
**LOW, MIDDLE AND HIGH PROJECTION SERIES**  
**KAPI'OLANI COMMUNITY COLLEGE**  
**FALL 2005 TO FALL 2012**

PROJECTION SERIES	ACTUAL	PROJECTED						
	2005	2006	2007	2008	2009	2010	2011	2012
<b>HIGH SERIES TOTAL .....</b>	<b>7,289</b>	<b>7,404</b>	<b>7,520</b>	<b>7,600</b>	<b>7,673</b>	<b>7,740</b>	<b>7,807</b>	<b>7,874</b>
Program:								
Liberal Arts .....	3,516	3,613	3,698	3,755	3,802	3,843	3,881	3,918
Career & Technical Ed .....	1,545	1,553	1,567	1,578	1,589	1,601	1,614	1,628
Unclassified .....	944	942	954	959	969	978	987	996
Home-Based at Other UH 1/..	1,284	1,296	1,301	1,308	1,313	1,318	1,325	1,332
Registration Status:								
First Time .....	1,181	1,191	1,202	1,179	1,171	1,160	1,152	1,147
Transfer .....	938	950	950	950	950	950	950	950
Returning .....	740	773	805	837	869	902	934	966
Continuing .....	4,430	4,490	4,563	4,634	4,683	4,728	4,771	4,811
<b>MIDDLE SERIES TOTAL 2/ .....</b>	<b>7,289</b>	<b>7,293</b>	<b>7,343</b>	<b>7,381</b>	<b>7,433</b>	<b>7,485</b>	<b>7,539</b>	<b>7,601</b>
Program:								
Liberal Arts .....	3,516	3,556	3,606	3,640	3,676	3,708	3,740	3,775
Career & Technical Ed .....	1,545	1,530	1,529	1,531	1,538	1,547	1,557	1,569
Unclassified .....	944	918	925	927	934	943	950	959
Home-Based at Other UH 1/..	1,284	1,289	1,283	1,283	1,285	1,287	1,292	1,298
Registration Status:								
First Time .....	1,181	1,185	1,199	1,175	1,169	1,157	1,147	1,143
Transfer .....	938	938	938	938	938	938	938	938
Returning .....	740	680	712	744	776	809	841	873
Continuing .....	4,430	4,490	4,494	4,524	4,550	4,581	4,613	4,647
<b>LOW SERIES TOTAL .....</b>	<b>7,289</b>	<b>7,013</b>	<b>6,856</b>	<b>6,737</b>	<b>6,659</b>	<b>6,601</b>	<b>6,555</b>	<b>6,525</b>
Program:								
Liberal Arts .....	3,516	3,390	3,320	3,264	3,227	3,199	3,176	3,161
Career & Technical Ed .....	1,545	1,490	1,457	1,432	1,416	1,403	1,393	1,386
Unclassified .....	944	889	872	857	848	842	836	833
Home-Based at Other UH 1/..	1,284	1,244	1,207	1,184	1,168	1,157	1,150	1,145
Registration Status:								
First Time .....	1,181	1,108	1,118	1,094	1,087	1,077	1,066	1,064
Transfer .....	938	817	817	817	817	817	817	817
Returning .....	740	676	676	676	676	676	676	676
Continuing .....	4,430	4,412	4,245	4,150	4,079	4,031	3,996	3,968

1/ Students whose home-campus, as defined in Banner / ODS, is not Kapi'olani Community College.

2/ The remaining tables in the report use the Middle Projection Series.

TABLE C2  
HEADCOUNT ENROLLMENT OF CREDIT STUDENTS, BY REGISTRATION STATUS  
MIDDLE PROJECTION SERIES  
KAPI'OLANI COMMUNITY COLLEGE  
FALL 1999 TO FALL 2012

REGISTRATION STATUS	HISTORICAL							PROJECTED						
	1999	2000	2001	2002	2003	2004	2005	2006	2007	2008	2009	2010	2011	2012
TOTAL .....	7,254	6,760	7,081	7,041	7,491	7,174	7,289	7,293	7,343	7,381	7,433	7,485	7,539	7,601
Liberal Arts .....	4,535	4,276	4,343	4,325	4,156	3,549	3,516	3,556	3,606	3,640	3,676	3,708	3,740	3,775
Career & Technical Ed .....	2,296	2,135	2,068	1,878	1,720	1,692	1,545	1,530	1,529	1,531	1,538	1,547	1,557	1,569
Unclassified .....	423	349	670	838	610	797	944	918	925	927	934	943	950	959
Home-Based Other UH 1/ .....					1,005	1,136	1,284	1,289	1,283	1,283	1,285	1,287	1,292	1,298
First-Time By HS Background 2/ ..	1,351	1,171	1,298	1,199	1,150	988	1,181	1,185	1,199	1,175	1,169	1,157	1,147	1,143
Direct from HI Public HS .....	738	581	571	517	504	464	517	520	535	495	491	482	476	472
Direct from HI Private HS .....	176	144	115	118	139	110	112	113	112	128	126	123	119	119
U.S. Mainland .....	69	81	123	102	77	58	122	122	122	122	122	122	122	122
Foreign & U.S. Related Areas ...	91	112	129	152	154	97	142	142	142	142	142	142	142	142
Other First-Time Freshmen 3/ ..	277	253	360	310	276	259	288	288	288	288	288	288	288	288
First-Time, By Program .....	1,351	1,171	1,298	1,199	1,150	988	1,181	1,185	1,199	1,175	1,169	1,157	1,147	1,143
Liberal Arts .....	948	812	852	792	816	596	670	694	702	688	684	677	671	669
Career & Technical Ed .....	322	302	292	208	176	191	190	210	212	208	207	205	203	202
Unclassified .....	81	57	154	199	140	196	244	214	217	212	211	209	208	207
Home-Based Other UH 1/ .....					18	5	77	67	68	67	67	66	65	65
Transfer .....	1,242	1,153	1,382	1,350	961	551	938	938	938	938	938	938	938	938
Liberal Arts .....	800	746	796	691	555	216	253	310	310	310	310	310	310	310
Career & Technical Ed .....	311	292	293	364	174	165	120	200	200	200	200	200	200	200
Unclassified .....	131	115	293	295	160	156	148	112	112	112	112	112	112	112
Home-Based Other UH 1/ .....					72	14	417	316	316	316	316	316	316	316
Returning .....	512	459	534	488	497	612	740	680	712	744	776	809	841	873
Liberal Arts .....	372	325	337	325	320	341	388	368	385	402	420	437	455	472
Career & Technical Ed .....	121	116	134	92	124	116	158	137	143	150	156	163	169	176
Unclassified .....	19	18	63	71	47	149	177	160	168	175	182	191	198	205
Home-Based Other UH 1/ .....					6	6	17	15	16	17	18	18	19	20

TABLE C2 (cont.)

REGISTRATION STATUS	HISTORICAL							PROJECTED						
	1999	2000	2001	2002	2003	2004	2005	2006	2007	2008	2009	2010	2011	2012
Continuing .....	4,149	3,977	3,867	4,004	4,883	5,023	4,430	4,490	4,494	4,524	4,550	4,581	4,613	4,647
Liberal Arts .....	2,415	2,393	2,358	2,517	2,465	2,396	2,205	2,184	2,209	2,240	2,262	2,284	2,304	2,324
Career & Technical Ed .....	1,542	1,425	1,349	1,214	1,246	1,220	1,077	983	974	973	975	979	985	991
Unclassified .....	192	159	160	273	263	296	375	432	428	428	429	431	432	435
Home-Based Other UH 1/ .....					909	1,111	773	891	883	883	884	887	892	897

1/ Students whose home-campus, as defined in Banner / ODS, is not Kapi'olani Community College.

2/ Breakouts for Fall 2002 to Fall 2004 have been adjusted with information taken from Datamart; therefore, counts may not tie to those reported elsewhere.

3/ Includes GED, students from Hawai'i who are not recent high school graduates and records with invalid high school code.

TABLE C3  
HEADCOUNT ENROLLMENT, BY PROGRAM  
MIDDLE PROJECTION SERIES  
KAPI'OLANI COMMUNITY COLLEGE  
FALL 2005 TO FALL 2012

PROGRAM	ACTUAL	PROJECTED						
	2005	2006	2007	2008	2009	2010	2011	2012
Total Students .....	7,289	7,293	7,343	7,381	7,433	7,485	7,539	7,601
General & Pre-Prof Ed .....	3,516	3,556	3,606	3,640	3,676	3,708	3,740	3,775
Liberal Arts .....	3,516	3,556	3,606	3,640	3,676	3,708	3,740	3,775
Career & Technical Ed .....	1,545	1,530	1,529	1,531	1,538	1,547	1,557	1,569
Business .....	564	558	558	559	561	565	568	573
Food Services .....	327	324	324	324	326	327	330	332
Health Services .....	452	448	447	448	450	453	456	459
Public Services .....	142	141	141	141	141	142	143	144
Technology .....	56	55	55	55	56	56	56	57
Vocational Other .....	4	4	4	4	4	4	4	4
Unclassified .....	2,228	2,207	2,208	2,210	2,219	2,230	2,242	2,257
Regular Unclassified 1/.....	895	875	881	884	892	900	908	917
Home-Based Other UH 2/ ..	1,284	1,289	1,283	1,283	1,285	1,287	1,292	1,298
Special Students .....	49	43	44	43	42	43	42	42
Early Admit .....	49	43	44	43	42	43	42	42

1/ Includes records with invalid data on education level.

2/ Students whose home-campus, as defined in Banner / ODS, is not Kapi'olani Community College.

TABLE C4  
 STUDENT SEMESTER HOURS OFFERED, BY PROGRAM  
 MIDDLE PROJECTION SERIES  
 KAPI'OLANI COMMUNITY COLLEGE  
 FALL 2005 TO FALL 2012

PROGRAM	ACTUAL	PROJECTED						
	2005	2006	2007	2008	2009	2010	2011	2012
Total .....	62,073	62,143	62,608	62,991	63,474	63,935	64,421	64,970
General Education .....	46,893	47,045	47,472	47,805	48,201	48,568	48,943	49,375
Humanities .....	25,808	25,895	26,128	26,318	26,540	26,743	26,949	27,192
Natural Sciences .....	14,476	14,516	14,646	14,739	14,857	14,968	15,083	15,213
Social Sciences .....	6,438	6,462	6,524	6,573	6,628	6,680	6,732	6,790
Other General Educ .....	171	172	174	175	176	177	179	180
Career & Technical Ed .....	15,180	15,098	15,136	15,186	15,273	15,367	15,478	15,595
Business .....	4,762	4,748	4,776	4,800	4,833	4,866	4,899	4,940
Food Serv & Hosp Ed .....	4,121	4,091	4,098	4,106	4,130	4,149	4,183	4,214
Health Services .....	5,417	5,384	5,386	5,403	5,431	5,467	5,504	5,543
Public Services .....	880	875	876	877	879	885	892	898

TABLE C5  
 FULL-TIME EQUIVALENT COURSE ENROLLMENT SERVED, BY PROGRAM  
 MIDDLE PROJECTION SERIES  
 KAPI'OLANI COMMUNITY COLLEGE  
 FALL 2005 TO FALL 2012

PROGRAM	ACTUAL	PROJECTED						
	2005	2006	2007	2008	2009	2010	2011	2012
Total .....	4,142	4,143	4,173	4,200	4,231	4,262	4,296	4,332
General Education .....	3,129	3,136	3,165	3,188	3,213	3,238	3,264	3,292
Humanities .....	1,722	1,726	1,742	1,755	1,769	1,783	1,797	1,813
Natural Sciences .....	966	968	976	983	990	998	1,006	1,014
Social Sciences .....	430	431	435	438	442	445	449	453
Other General Educ .....	11	11	12	12	12	12	12	12
Career & Technical Ed .....	1,013	1,007	1,008	1,012	1,018	1,024	1,032	1,040
Business .....	318	317	318	320	322	324	327	329
Food Serv & Hosp Ed .....	275	273	273	274	275	277	279	281
Health Services .....	361	359	359	360	362	364	367	370
Public Services .....	59	58	58	58	59	59	59	60

Kaua'i Community College  
Credit Students

Figure D1  
Historical and Projected Headcount Enrollment

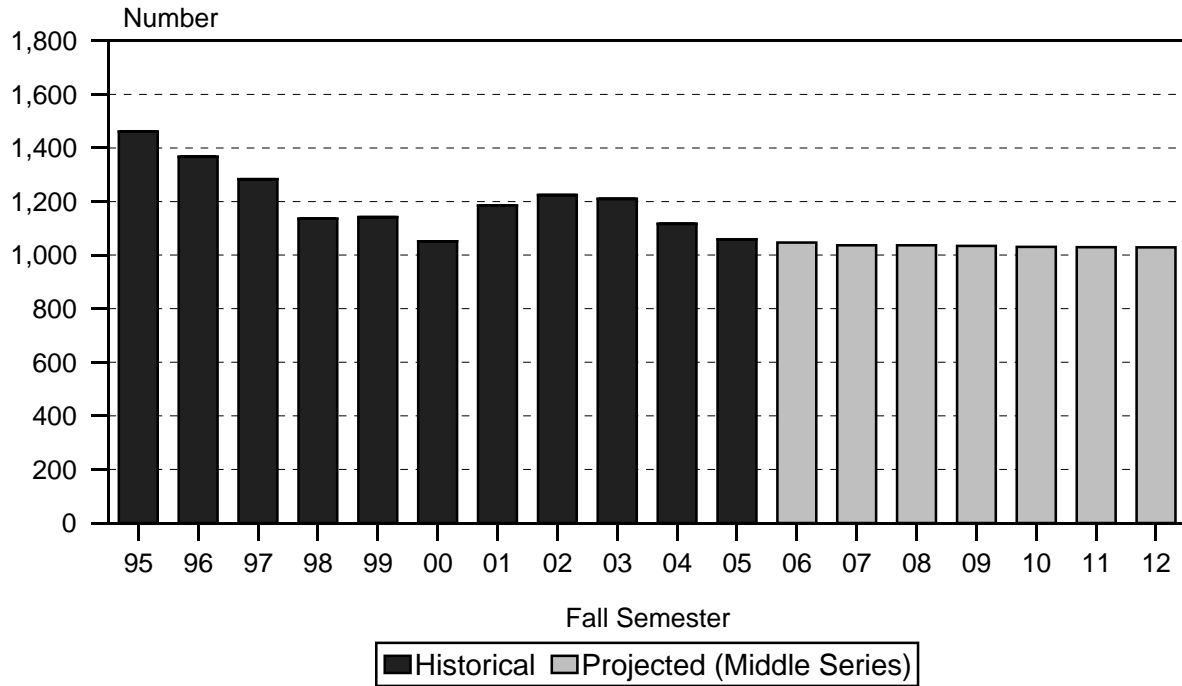
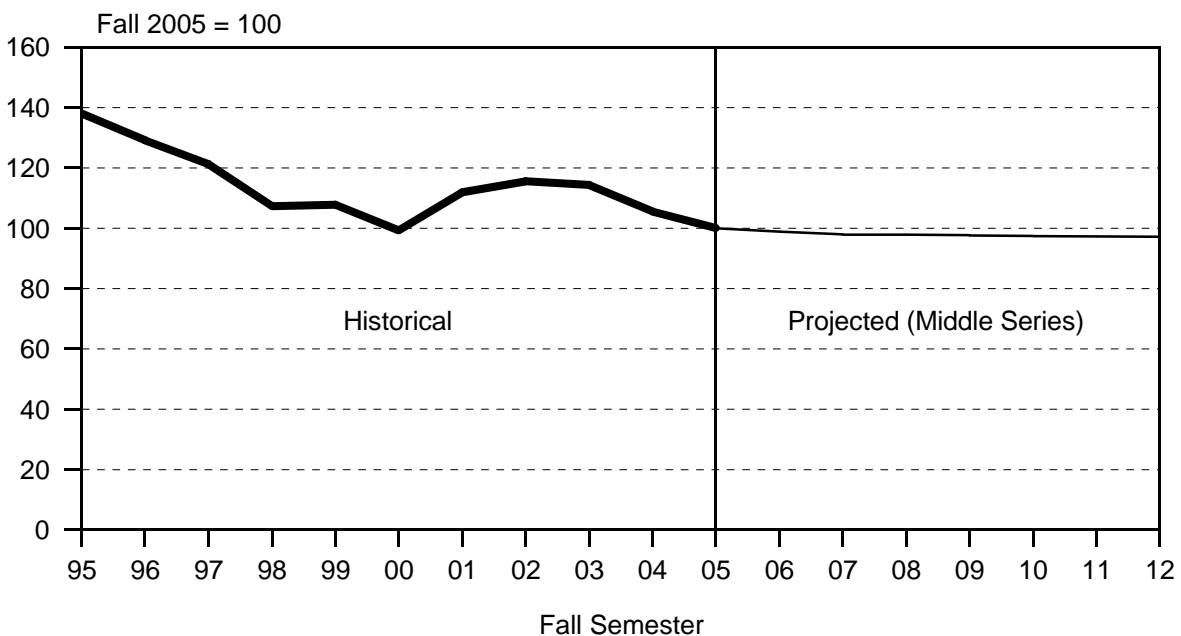


Figure D2  
Enrollment Index



Kaua'i Community College  
Credit Students

Figure D3  
High, Middle and Low Projection Series

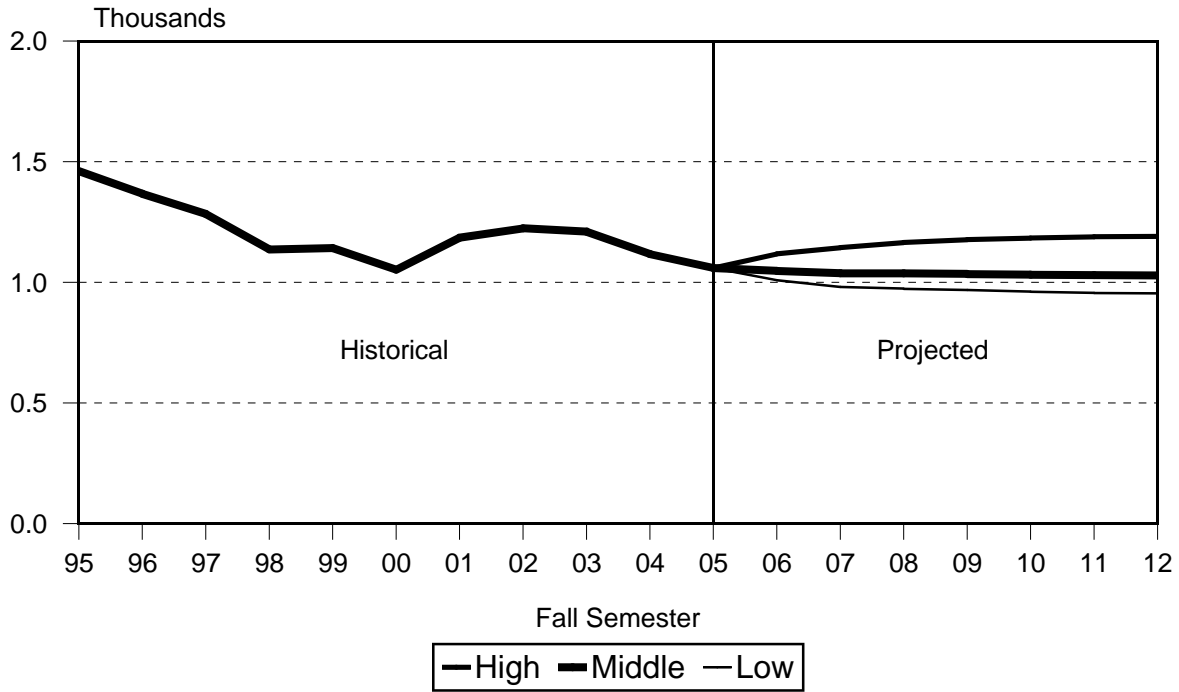


Figure D4  
Historical and Projected Headcount Enrollment

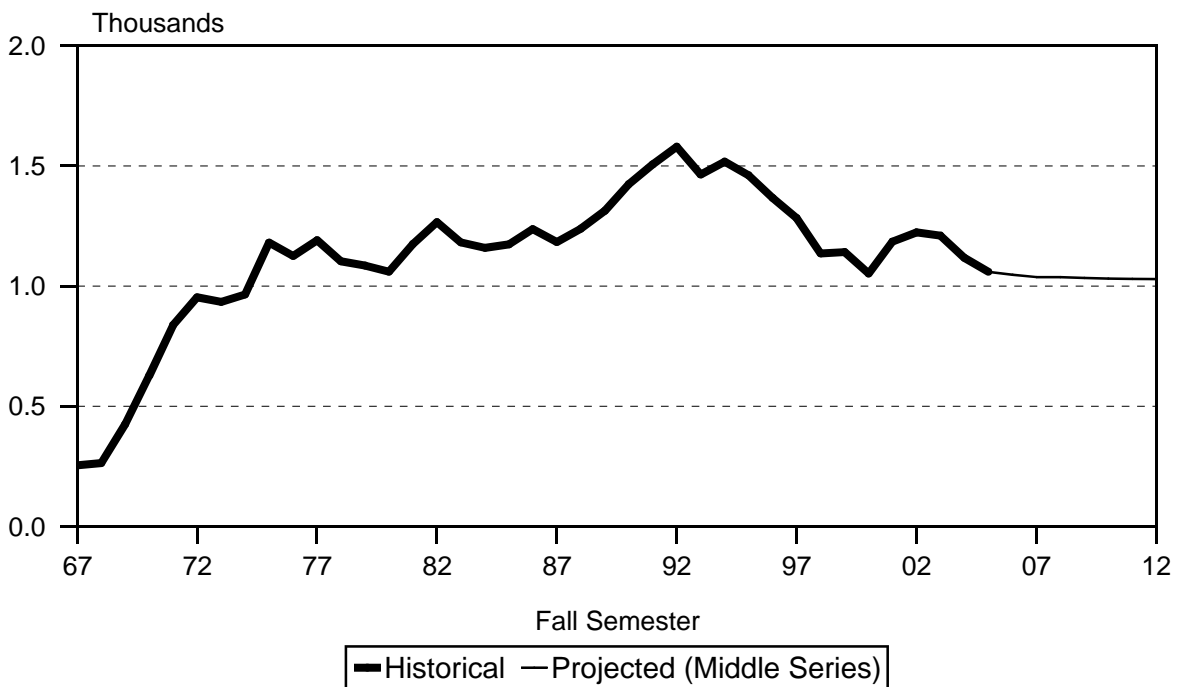




TABLE D1  
HEADCOUNT ENROLLMENT OF CREDIT STUDENTS  
LOW, MIDDLE AND HIGH PROJECTION SERIES  
KAUA'I COMMUNITY COLLEGE  
FALL 2005 TO FALL 2012

PROJECTION SERIES	ACTUAL	PROJECTED						
	2005	2006	2007	2008	2009	2010	2011	2012
<b>HIGH SERIES TOTAL</b> .....	1,059	1,118	1,144	1,165	1,177	1,184	1,189	1,191
By Program:								
Liberal Arts .....	486	498	498	499	499	497	496	494
Career & Technical Ed .....	345	390	419	439	452	461	467	471
Unclassified .....	196	199	196	196	195	195	195	195
Home-Based at Other UH 1/..	32	31	31	31	31	31	31	31
Registration Status:								
First Time .....	337	350	339	341	338	335	335	334
Transfer .....	79	79	79	79	79	79	79	79
Returning .....	124	131	131	131	131	131	131	131
Continuing .....	519	558	595	614	629	639	644	647
<b>MIDDLE SERIES TOTAL 2/ .....</b>	<b>1,059</b>	<b>1,047</b>	<b>1,037</b>	<b>1,037</b>	<b>1,034</b>	<b>1,031</b>	<b>1,030</b>	<b>1,029</b>
By Program:								
Liberal Arts .....	486	477	467	463	459	456	455	454
Career & Technical Ed .....	345	361	368	374	376	377	377	377
Unclassified .....	196	181	175	174	173	172	172	172
Home-Based at Other UH 1/..	32	28	27	26	26	26	26	26
Registration Status:								
First Time .....	337	338	327	329	326	323	323	322
Transfer .....	79	79	79	79	79	79	79	79
Returning .....	124	124	124	124	124	124	124	124
Continuing .....	519	506	507	505	505	505	504	504
<b>LOW SERIES TOTAL</b> .....	1,059	1,009	981	973	968	961	956	954
By Program:								
Liberal Arts .....	486	458	439	432	428	423	421	419
Career & Technical Ed .....	345	351	352	353	353	352	351	350
Unclassified .....	196	172	164	162	161	160	159	160
Home-Based at Other UH 1/..	32	28	26	26	26	26	25	25
Registration Status:								
First Time .....	337	313	302	305	303	298	297	296
Transfer .....	79	76	76	76	76	76	76	76
Returning .....	124	114	114	114	114	114	114	114
Continuing .....	519	506	489	478	475	473	469	468

1/ Students whose home-campus, as defined in Banner / ODS, is not Kaua'i Community College.

2/ The remaining tables in the report use the Middle Projection Series.



TABLE D2 (cont.)

REGISTRATION STATUS	HISTORICAL							PROJECTED						
	1999	2000	2001	2002	2003	2004	2005	2006	2007	2008	2009	2010	2011	2012
Continuing .....	602	564	570	613	671	658	519	506	507	505	505	505	504	504
Liberal Arts .....	249	264	245	308	288	288	237	223	219	214	212	210	209	209
Career & Technical Ed .....	261	211	220	165	187	219	201	218	228	233	236	238	238	238
Unclassified .....	92	89	105	140	166	115	65	52	48	47	46	46	46	46
Home-Based at Other UH 1/.....					30	36	16	13	12	11	11	11	11	11

1/ Students whose home-campus, as defined in Banner / ODS, is not Kaua'i Community College.

2/ Breakouts for Fall 2002 to Fall 2004 have been adjusted with information taken from Datamart; therefore, counts may not tie to those reported elsewhere.

3/ Includes GED, students from Hawai'i who are not recent high school graduates and records with invalid high school code.

TABLE D3  
HEADCOUNT ENROLLMENT, BY PROGRAM  
MIDDLE PROJECTION SERIES  
KAUA'I COMMUNITY COLLEGE  
FALL 2005 TO FALL 2012

PROGRAM	ACTUAL	PROJECTED						
	2005	2006	2007	2008	2009	2010	2011	2012
Total Students .....	1,059	1,047	1,037	1,037	1,034	1,031	1,030	1,029
General & Pre-Prof Ed .....	486	477	467	463	459	456	455	454
Liberal Arts .....	486	477	467	463	459	456	455	454
Career & Technical Ed .....	345	361	368	374	376	377	377	377
Business .....	170	177	181	184	186	185	185	185
Health Services .....	56	59	60	61	61	61	61	61
Public Services .....	38	40	41	41	41	42	42	42
Technology .....	81	85	86	88	88	89	89	89
Unclassified .....	228	209	202	200	199	198	198	198
Regular Unclassified 1/ .....	154	139	134	133	132	132	132	132
Home-Based at Other UH 2/	32	28	27	26	26	26	26	26
Special Students .....	42	42	41	41	41	40	40	40
Early Admit .....	42	42	41	41	41	40	40	40

1/ Includes records with invalid data on education level.

2/ Students whose home-campus, as defined in Banner / ODS, is not Kaua'i Community College.

TABLE D4  
 STUDENT SEMESTER HOURS OFFERED, BY PROGRAM  
 MIDDLE PROJECTION SERIES  
 KAUA'I COMMUNITY COLLEGE  
 FALL 2005 TO FALL 2012

PROGRAM	ACTUAL	PROJECTED						
	2005	2006	2007	2008	2009	2010	2011	2012
Total .....	8,874	8,855	8,799	8,815	8,791	8,762	8,754	8,744
General Education .....	5,526	5,435	5,355	5,333	5,301	5,277	5,271	5,263
Humanities .....	3,139	3,085	3,038	3,026	3,010	2,997	2,993	2,989
Natural Sciences .....	1,631	1,606	1,583	1,574	1,563	1,556	1,554	1,551
Social Sciences .....	558	549	540	538	534	532	532	531
Other General Educ .....	198	195	194	195	194	192	192	192
Career & Technical Ed .....	3,348	3,420	3,444	3,482	3,490	3,485	3,483	3,481
Business .....	1,434	1,453	1,461	1,476	1,482	1,475	1,474	1,473
Food Services .....	485	505	516	525	530	527	527	527
Health Services .....	688	705	706	712	710	708	708	707
Public Services .....	159	165	167	167	167	169	169	169
Technology .....	582	592	594	602	601	606	605	605

TABLE D5  
 FULL-TIME EQUIVALENT COURSE ENROLLMENT SERVED, BY PROGRAM  
 MIDDLE PROJECTION SERIES  
 KAUA'I COMMUNITY COLLEGE  
 FALL 2005 TO FALL 2012

PROGRAM	ACTUAL	PROJECTED						
	2005	2006	2007	2008	2009	2010	2011	2012
Total .....	592	591	587	587	586	583	583	581
General Education .....	368	363	358	356	354	352	352	350
Humanities .....	210	206	203	202	201	200	200	199
Natural Sciences .....	107	107	106	105	104	104	104	103
Social Sciences .....	38	37	36	36	36	35	35	35
Other General Educ .....	13	13	13	13	13	13	13	13
Career & Technical Ed .....	224	228	229	231	232	231	231	231
Business .....	95	97	97	98	99	98	98	98
Food Services .....	32	34	34	35	35	35	35	35
Health Services .....	46	47	47	47	47	47	47	47
Public Services .....	11	11	11	11	11	11	11	11
Technology .....	40	39	40	40	40	40	40	40

Leeward Community College  
Credit Students

Figure E1  
Historical and Projected Headcount Enrollment

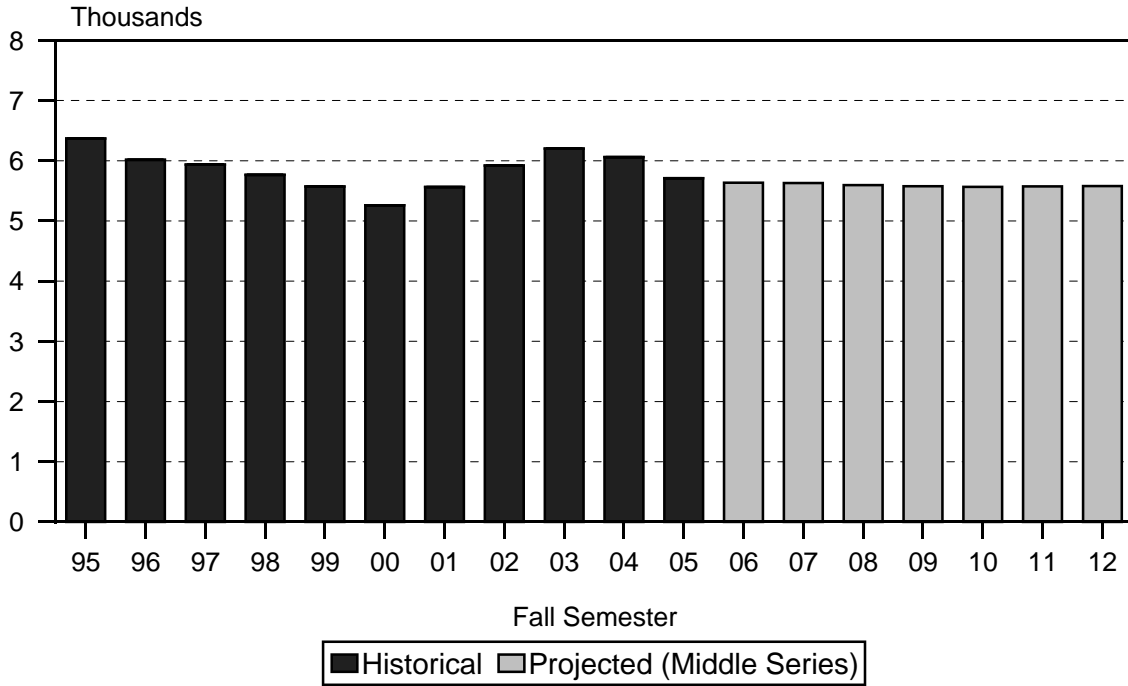
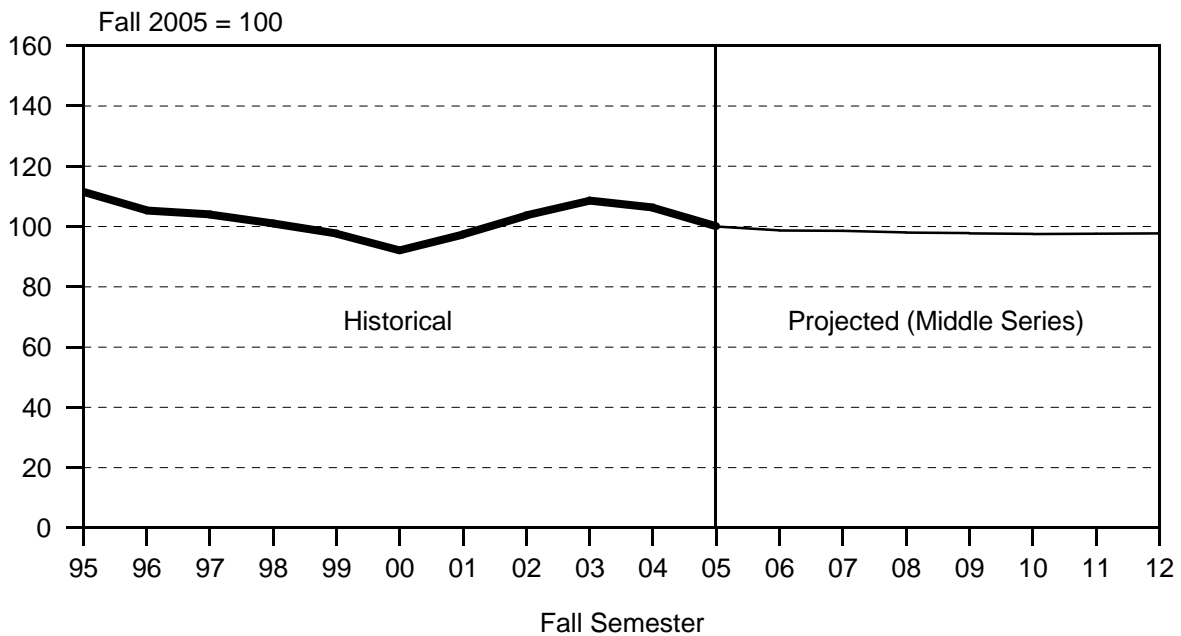


Figure E2  
Enrollment Index



Leeward Community College  
Credit Students

Figure E3  
High, Middle and Low Projection Series

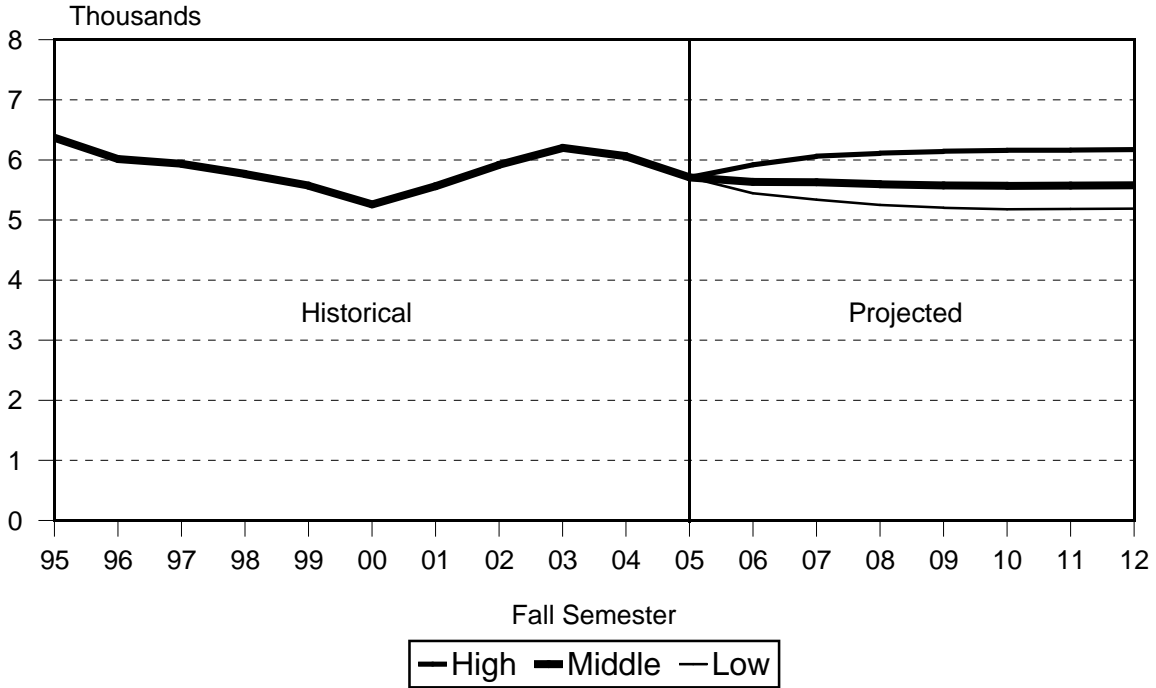
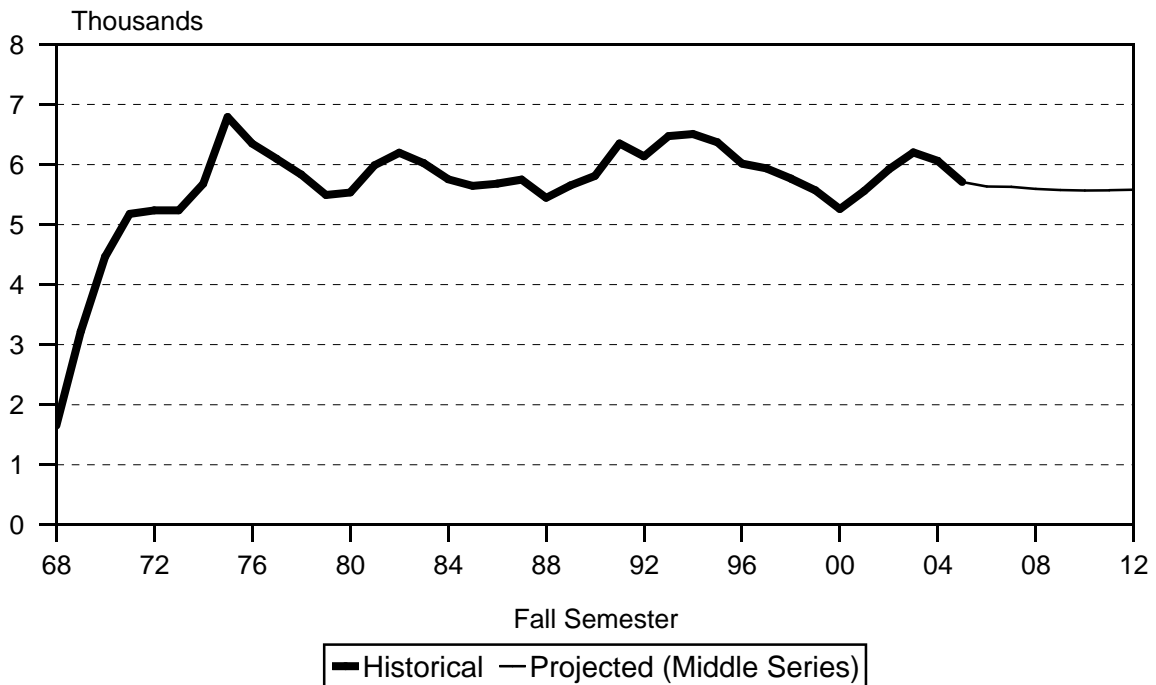


Figure E4  
Historical and Projected Headcount Enrollment



**TABLE E1  
HEADCOUNT ENROLLMENT OF CREDIT STUDENTS  
LOW, MIDDLE AND HIGH PROJECTION SERIES  
LEEWARD COMMUNITY COLLEGE  
FALL 2005 TO FALL 2012**

PROJECTION SERIES	ACTUAL	PROJECTED						
	2005	2006	2007	2008	2009	2010	2011	2012
<b>HIGH SERIES TOTAL .....</b>	<b>5,709</b>	<b>5,919</b>	<b>6,063</b>	<b>6,113</b>	<b>6,144</b>	<b>6,162</b>	<b>6,165</b>	<b>6,174</b>
Program:								
Liberal Arts .....	3,736	3,839	3,908	3,919	3,924	3,925	3,927	3,934
Career & Technical Ed .....	862	891	911	916	919	921	921	923
Unclassified .....	401	424	441	448	455	458	459	459
Home-Based at Other UH 1/..	710	765	803	830	846	858	858	858
Registration Status:								
First Time .....	1,298	1,379	1,398	1,361	1,360	1,357	1,360	1,369
Transfer .....	862	862	862	862	862	862	862	862
Returning .....	387	392	392	392	392	392	392	392
Continuing .....	3,162	3,286	3,411	3,498	3,530	3,551	3,551	3,551
<b>MIDDLE SERIES TOTAL 2/ .....</b>	<b>5,709</b>	<b>5,635</b>	<b>5,628</b>	<b>5,594</b>	<b>5,576</b>	<b>5,567</b>	<b>5,573</b>	<b>5,580</b>
Program:								
Liberal Arts .....	3,736	3,812	3,866	3,869	3,869	3,868	3,872	3,877
Career & Technical Ed .....	862	885	901	905	906	906	907	908
Unclassified .....	401	353	333	319	314	312	312	313
Home-Based at Other UH 1/..	710	585	528	501	487	481	482	482
Registration Status:								
First Time .....	1,298	1,352	1,371	1,334	1,331	1,330	1,336	1,343
Transfer .....	862	862	862	862	862	862	862	862
Returning .....	387	381	381	381	381	381	381	381
Continuing .....	3,162	3,040	3,014	3,017	3,002	2,994	2,994	2,994
<b>LOW SERIES TOTAL .....</b>	<b>5,709</b>	<b>5,445</b>	<b>5,338</b>	<b>5,250</b>	<b>5,202</b>	<b>5,179</b>	<b>5,185</b>	<b>5,192</b>
Program:								
Liberal Arts .....	3,736	3,686	3,674	3,640	3,619	3,608	3,612	3,617
Career & Technical Ed .....	862	852	851	844	839	837	838	839
Unclassified .....	401	346	320	305	299	296	297	297
Home-Based at Other UH 1/..	710	561	493	461	445	438	438	439
Registration Status:								
First Time .....	1,298	1,344	1,363	1,326	1,322	1,322	1,328	1,335
Transfer .....	862	741	741	741	741	741	741	741
Returning .....	387	381	381	381	381	381	381	381
Continuing .....	3,162	2,979	2,853	2,802	2,758	2,735	2,735	2,735

1/ Students whose home-campus, as defined in Banner / ODS, is not Leeward Community College.

2/ The remaining tables in the report use the Middle Projection Series.



TABLE E2  
HEADCOUNT ENROLLMENT OF CREDIT STUDENTS, BY REGISTRATION STATUS  
MIDDLE PROJECTION SERIES  
LEEWARD COMMUNITY COLLEGE  
FALL 1999 TO FALL 2012

REGISTRATION STATUS	HISTORICAL							PROJECTED						
	1999	2000	2001	2002	2003	2004	2005	2006	2007	2008	2009	2010	2011	2012
TOTAL .....	5,570	5,259	5,562	5,918	6,201	6,060	5,709	5,635	5,628	5,594	5,576	5,567	5,573	5,580
Liberal Arts .....	3,991	3,779	3,958	4,312	4,203	3,936	3,736	3,812	3,866	3,869	3,869	3,868	3,872	3,877
Career & Technical Ed .....	1,167	1,078	1,112	1,062	945	932	862	885	901	905	906	906	907	908
Unclassified .....	412	402	492	544	352	388	401	353	333	319	314	312	312	313
Home-Based at Other UH 1/.....					701	804	710	585	528	501	487	481	482	482
First-Time By HS Background 2/ .	1,290	1,084	1,270	1,370	1,382	1,333	1,298	1,352	1,371	1,334	1,331	1,330	1,336	1,343
Direct from HI Public HS .....	698	604	698	727	746	743	737	794	814	767	765	767	775	782
Direct from HI Private HS .....	78	75	69	76	65	60	75	72	71	81	80	77	75	75
U.S. Mainland .....	82	80	91	72	83	89	86	86	86	86	86	86	86	86
Foreign & U.S. Related Areas ...	31	20	41	34	31	36	33	33	33	33	33	33	33	33
Other First-Time Freshmen 3/ ..	401	305	371	461	457	405	367	367	367	367	367	367	367	367
First-Time, By Program .....	1,290	1,084	1,270	1,370	1,382	1,333	1,298	1,352	1,371	1,334	1,331	1,330	1,336	1,343
Liberal Arts .....	943	787	928	1,025	1,013	961	930	972	985	959	957	956	960	965
Career & Technical Ed .....	248	223	256	247	235	230	198	220	223	217	216	216	217	218
Unclassified .....	99	74	86	98	114	139	132	124	127	123	123	123	123	124
Home-Based at Other UH 1/.....					20	3	38	36	36	35	35	35	36	36
Transfer .....	661	747	860	851	628	504	862	862	862	862	862	862	862	862
Liberal Arts .....	427	463	544	556	469	371	432	533	533	533	533	533	533	533
Career & Technical Ed .....	118	152	146	122	81	76	87	108	108	108	108	108	108	108
Unclassified .....	116	132	170	173	50	50	76	49	49	49	49	49	49	49
Home-Based at Other UH 1/.....					28	7	267	172	172	172	172	172	172	172
Returning .....	366	386	443	458	415	375	387	381	381	381	381	381	381	381
Liberal Arts .....	257	281	320	341	338	276	288	282	282	282	282	282	282	282
Career & Technical Ed .....	67	75	77	57	49	59	51	55	55	55	55	55	55	55
Unclassified .....	42	30	46	60	23	39	40	37	37	37	37	37	37	37
Home-Based at Other UH 1/.....					5	1	8	7	7	7	7	7	7	7

TABLE E2 (cont.)

REGISTRATION STATUS	HISTORICAL							PROJECTED						
	1999	2000	2001	2002	2003	2004	2005	2006	2007	2008	2009	2010	2011	2012
Continuing .....	3,253	3,042	2,989	3,239	3,776	3,848	3,162	3,040	3,014	3,017	3,002	2,994	2,994	2,994
Liberal Arts .....	2,364	2,248	2,166	2,390	2,383	2,328	2,086	2,025	2,066	2,095	2,097	2,097	2,097	2,097
Career & Technical Ed .....	734	628	633	636	580	567	526	502	515	525	527	527	527	527
Unclassified .....	155	166	190	213	165	160	153	143	120	110	105	103	103	103
Home-Based at Other UH 1/.....					648	793	397	370	313	287	273	267	267	267

1/ Students whose home-campus, as defined in Banner / ODS, is not Leeward Community College.

2/ Breakouts for Fall 2002 to Fall 2004 have been adjusted with information taken from Datamart; therefore, counts may not tie to those reported elsewhere.

3/ Includes GED, students from Hawai'i who are not recent high school graduates and records with invalid high school code.

TABLE E3  
HEADCOUNT ENROLLMENT, BY PROGRAM  
MIDDLE PROJECTION SERIES  
LEEWARD COMMUNITY COLLEGE  
FALL 2005 TO FALL 2012

PROGRAM	ACTUAL	PROJECTED						
	2005	2006	2007	2008	2009	2010	2011	2012
Total Students .....	5,709	5,635	5,628	5,594	5,576	5,567	5,573	5,580
General & Pre-Prof Ed .....	3,736	3,812	3,866	3,869	3,869	3,868	3,872	3,877
Liberal Arts .....	3,736	3,812	3,866	3,869	3,869	3,868	3,872	3,877
Career & Technical Ed .....	862	885	901	905	906	906	907	908
Business .....	459	471	481	482	483	483	484	484
Food Services .....	97	100	101	102	102	102	102	102
Health Services .....	4	4	4	4	4	4	4	4
Public Services .....	27	28	28	28	28	28	28	28
Technology .....	275	282	287	289	289	289	289	290
Unclassified .....	1,111	938	861	820	801	793	794	795
Regular Unclassified 1/ .....	341	297	275	263	258	256	256	257
Home-Based Other UH 2/ .....	710	585	528	501	487	481	482	482
Special Students .....	60	56	58	56	56	56	56	56
Early Admit .....	60	56	58	56	56	56	56	56

1/ Includes records with invalid data on education level.

2/ Students whose home-campus, as defined in Banner / ODS, is not Leeward Community College.

**TABLE E4**  
**STUDENT SEMESTER HOURS OFFERED, BY PROGRAM**  
**MIDDLE PROJECTION SERIES**  
**LEEWARD COMMUNITY COLLEGE**  
**FALL 2005 TO FALL 2012**

PROGRAM	ACTUAL	PROJECTED						
	2005	2006	2007	2008	2009	2010	2011	2012
Total .....	49,965	49,886	50,076	49,907	49,799	49,744	49,799	49,865
General Education .....	41,324	41,231	41,376	41,219	41,127	41,080	41,124	41,179
Humanities .....	22,269	22,229	22,308	22,226	22,178	22,152	22,175	22,205
Natural Sciences .....	10,813	10,775	10,811	10,766	10,741	10,728	10,741	10,755
Social Sciences .....	7,944	7,926	7,953	7,922	7,904	7,896	7,904	7,914
Other General Educ .....	298	301	304	305	304	304	304	305
Career & Technical Ed .....	8,641	8,655	8,700	8,688	8,672	8,664	8,675	8,686
Business .....	5,333	5,311	5,331	5,309	5,298	5,293	5,301	5,306
Food Services .....	535	548	553	558	558	558	558	558
Health Services .....	321	317	317	316	315	314	314	315
Public Services .....	804	805	805	804	802	801	802	803
Technology .....	1,648	1,674	1,694	1,701	1,699	1,698	1,700	1,704

**TABLE E5**  
**FULL-TIME EQUIVALENT COURSE ENROLLMENT SERVED, BY PROGRAM**  
**MIDDLE PROJECTION SERIES**  
**LEEWARD COMMUNITY COLLEGE**  
**FALL 2005 TO FALL 2012**

PROGRAM	ACTUAL	PROJECTED						
	2005	2006	2007	2008	2009	2010	2011	2012
Total .....	3,326	3,326	3,338	3,327	3,319	3,315	3,318	3,325
General Education .....	2,751	2,748	2,758	2,748	2,742	2,738	2,741	2,745
Humanities .....	1,481	1,482	1,487	1,482	1,479	1,477	1,478	1,480
Natural Sciences .....	720	718	721	718	716	715	716	717
Social Sciences .....	530	528	530	528	527	526	527	528
Other General Educ .....	20	20	20	20	20	20	20	20
Career & Technical Ed .....	575	578	580	579	577	577	577	580
Business .....	355	354	355	354	353	353	353	354
Food Services .....	36	37	37	37	37	37	37	37
Health Services .....	21	21	21	21	21	21	21	21
Public Services .....	53	54	54	54	53	53	53	54
Technology .....	110	112	113	113	113	113	113	114

Maui Community College  
Credit Students

Figure F1  
Historical and Projected Headcount Enrollment

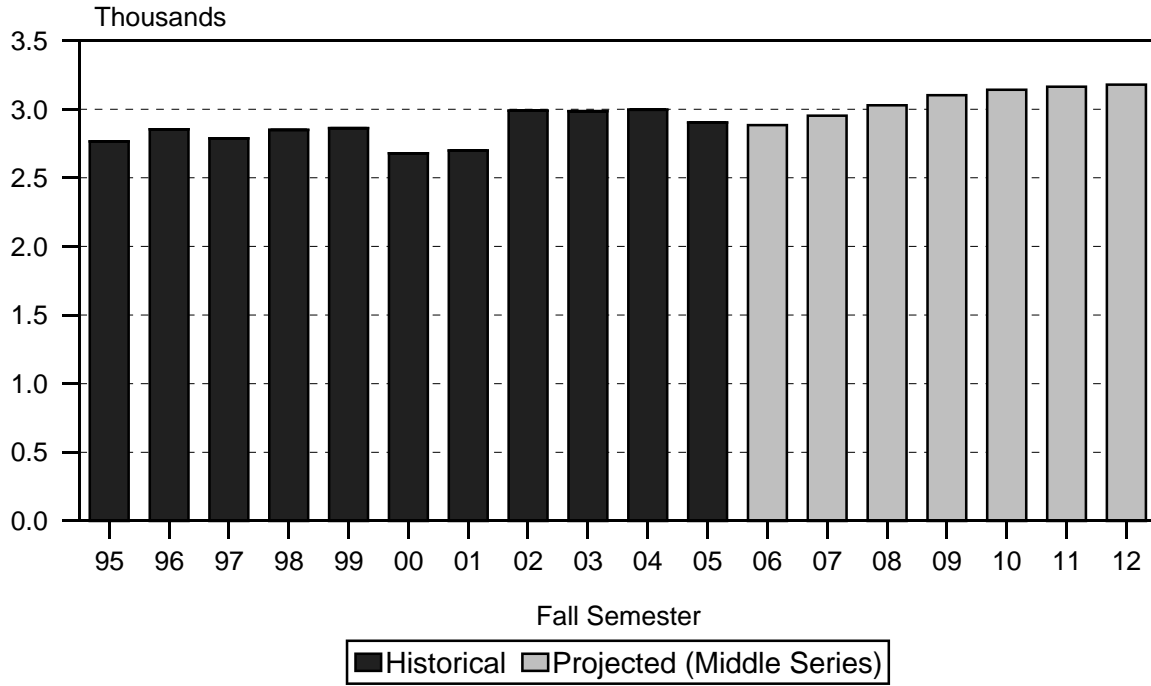
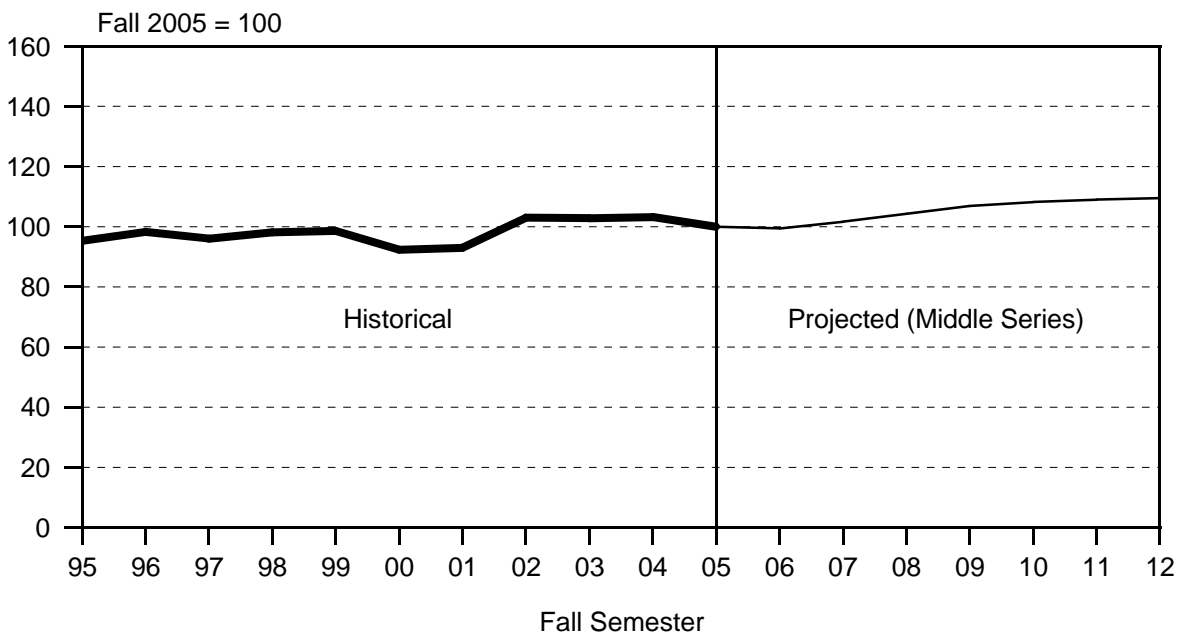


Figure F2  
Enrollment Index



Maui Community College  
Credit Students

Figure F3  
High, Middle and Low Projection Series

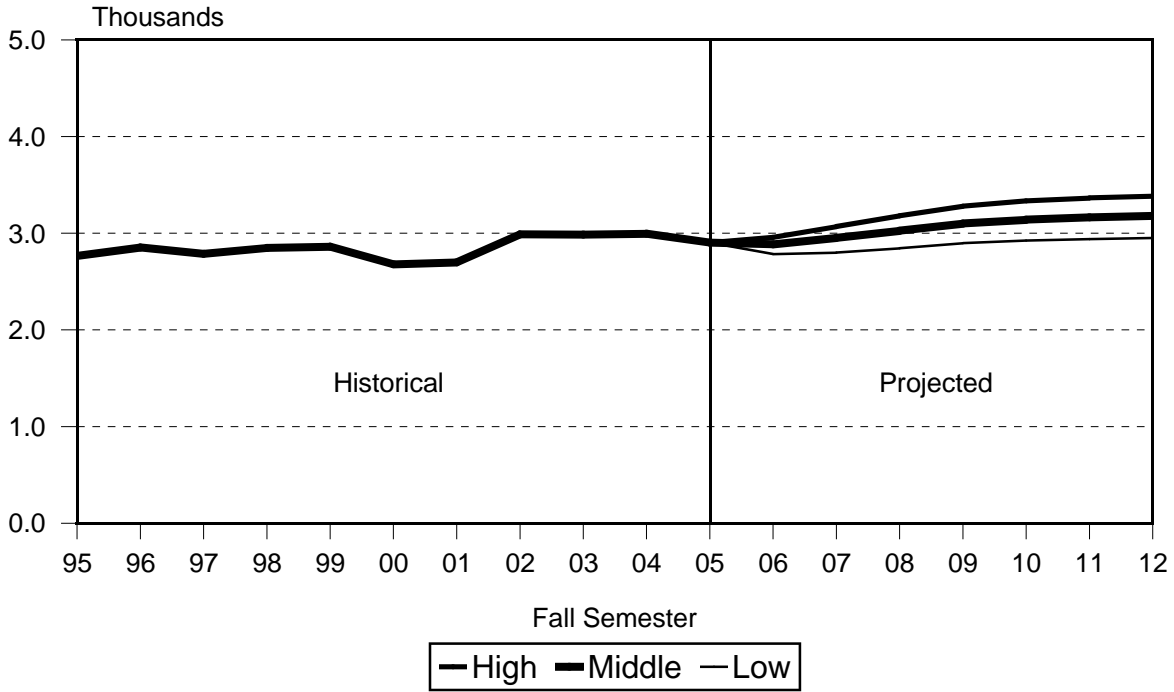
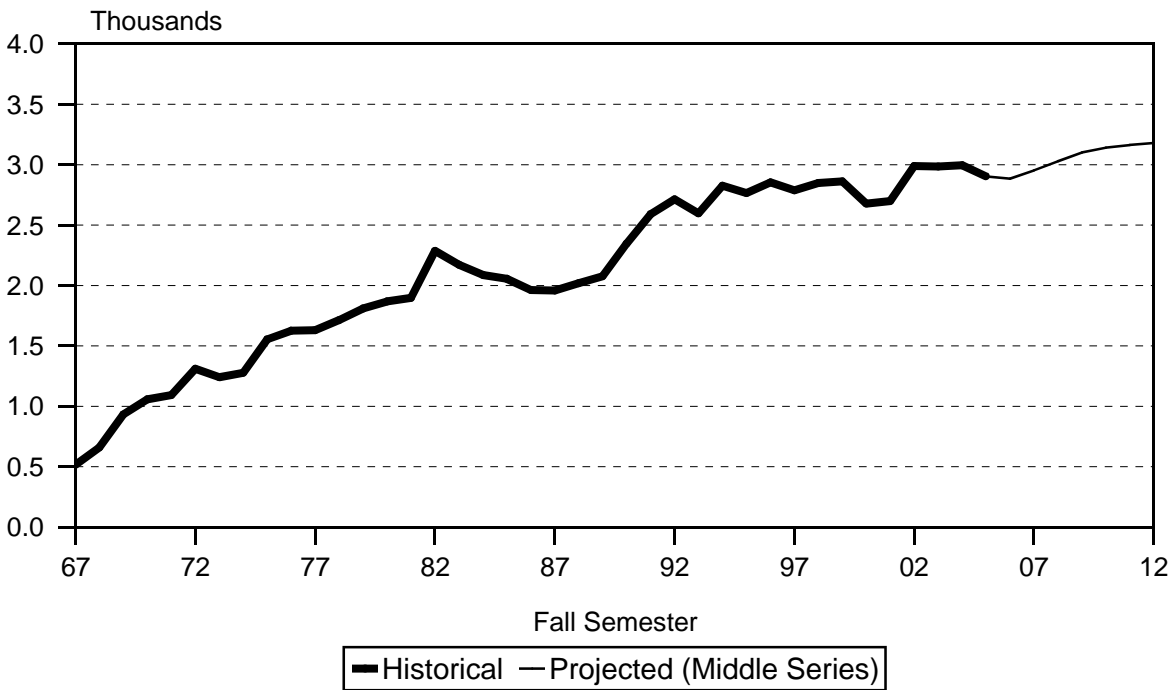


Figure F4  
Historical and Projected Headcount Enrollment



**TABLE F1  
HEADCOUNT ENROLLMENT OF CREDIT STUDENTS  
LOW, MIDDLE AND HIGH PROJECTION SERIES  
MAUI COMMUNITY COLLEGE  
FALL 2005 TO FALL 2012**

PROJECTION SERIES	ACTUAL	PROJECTED						
	2005	2006	2007	2008	2009	2010	2011	2012
<b>HIGH SERIES TOTAL .....</b>	<b>2,903</b>	<b>2,957</b>	<b>3,071</b>	<b>3,181</b>	<b>3,281</b>	<b>3,335</b>	<b>3,366</b>	<b>3,386</b>
Program:								
Liberal Arts .....	1,183	1,259	1,321	1,371	1,413	1,436	1,449	1,456
Career & Technical Ed .....	974	1,042	1,098	1,144	1,183	1,209	1,226	1,237
Unclassified .....	568	514	508	513	522	526	527	529
Home-Based at Other UH 1/...	178	142	144	153	163	164	164	164
Registration Status:								
First Time .....	695	706	717	716	715	717	717	718
Transfer .....	472	387	427	468	508	508	508	508
Returning .....	410	410	410	410	410	410	410	410
Continuing .....	1,326	1,454	1,517	1,587	1,648	1,700	1,731	1,750
<b>MIDDLE SERIES TOTAL 2/ .....</b>	<b>2,903</b>	<b>2,884</b>	<b>2,953</b>	<b>3,028</b>	<b>3,102</b>	<b>3,141</b>	<b>3,164</b>	<b>3,180</b>
Program:								
Liberal Arts .....	1,183	1,221	1,258	1,288	1,317	1,333	1,342	1,347
Career & Technical Ed .....	974	1,028	1,072	1,108	1,139	1,159	1,172	1,182
Unclassified .....	568	500	490	492	500	502	502	503
Home-Based at Other UH 1/...	178	135	133	140	146	147	148	148
Registration Status:								
First Time .....	695	683	693	692	692	693	693	695
Transfer .....	472	351	382	413	444	444	444	444
Returning .....	410	410	410	410	410	410	410	410
Continuing .....	1,326	1,440	1,468	1,513	1,556	1,594	1,617	1,631
<b>LOW SERIES TOTAL .....</b>	<b>2,903</b>	<b>2,784</b>	<b>2,801</b>	<b>2,845</b>	<b>2,898</b>	<b>2,925</b>	<b>2,940</b>	<b>2,952</b>
Program:								
Liberal Arts .....	1,183	1,180	1,192	1,209	1,229	1,239	1,244	1,248
Career & Technical Ed .....	974	1,000	1,026	1,049	1,070	1,084	1,093	1,100
Unclassified .....	568	475	459	458	465	467	468	469
Home-Based at Other UH 1/...	178	129	124	129	134	135	135	135
Registration Status:								
First Time .....	695	635	645	644	645	645	646	648
Transfer .....	472	328	354	380	407	407	407	407
Returning .....	410	381	381	381	381	381	381	381
Continuing .....	1,326	1,440	1,421	1,440	1,465	1,492	1,506	1,516

1/ Students whose home-campus, as defined in Banner / ODS, is not Maui Community College.

2/ The remaining tables in the report use the Middle Projection Series.





TABLE F2 (cont.)

REGISTRATION STATUS	HISTORICAL							PROJECTED						
	1999	2000	2001	2002	2003	2004	2005	2006	2007	2008	2009	2010	2011	2012
Continuing .....	1,415	1,376	1,295	1,464	1,733	1,796	1,326	1,440	1,468	1,513	1,556	1,594	1,617	1,631
Liberal Arts .....	587	605	503	673	727	730	565	623	643	662	678	693	702	707
Career & Technical Ed .....	642	604	585	431	528	620	558	639	674	703	727	747	760	769
Unclassified .....	186	167	207	360	314	270	146	128	109	106	109	111	111	111
Home-Based at Other UH 1/.....					164	176	57	50	42	42	42	43	44	44

1/ Students whose home-campus, as defined in Banner / ODS, is not Maui Community College.

2/ Breakouts for Fall 2002 to Fall 2004 have been adjusted with information taken from Datamart; therefore, counts may not tie to those reported elsewhere.

3/ Includes GED, students from Hawai'i who are not recent high school graduates and records with invalid high school code.

TABLE F3  
HEADCOUNT ENROLLMENT, BY PROGRAM  
MIDDLE PROJECTION SERIES  
MAUI COMMUNITY COLLEGE  
FALL 2005 TO FALL 2012

PROGRAM	ACTUAL	PROJECTED						
	2005	2006	2007	2008	2009	2010	2011	2012
Total Students .....	2,903	2,884	2,953	3,028	3,102	3,141	3,164	3,180
General & Pre-Prof Ed .....	1,183	1,221	1,258	1,288	1,317	1,333	1,342	1,347
Liberal Arts .....	1,183	1,221	1,258	1,288	1,317	1,333	1,342	1,347
Career & Technical Ed .....	974	1,028	1,072	1,108	1,139	1,159	1,172	1,182
Business .....	297	314	328	338	347	354	357	361
Food Services .....	132	139	145	150	154	157	159	160
Health Services .....	133	140	146	151	156	158	160	161
Public Services .....	200	211	220	228	234	238	241	243
Technology .....	212	224	233	241	248	252	255	257
Unclassified .....	746	635	623	632	646	649	650	651
Regular Unclassified 1/ .....	493	433	422	425	432	434	435	436
Home-Based Other UH 2/ .....	178	135	133	140	146	147	148	148
Special Students .....	75	67	68	67	68	68	67	67
Early Admit .....	75	67	68	67	68	68	67	67

1/ Includes records with invalid data on education level.

2/ Students whose home-campus, as defined in Banner / ODS, is not Maui Community College.



Windward Community College  
Credit Students

Figure G1  
Historical and Projected Headcount Enrollment

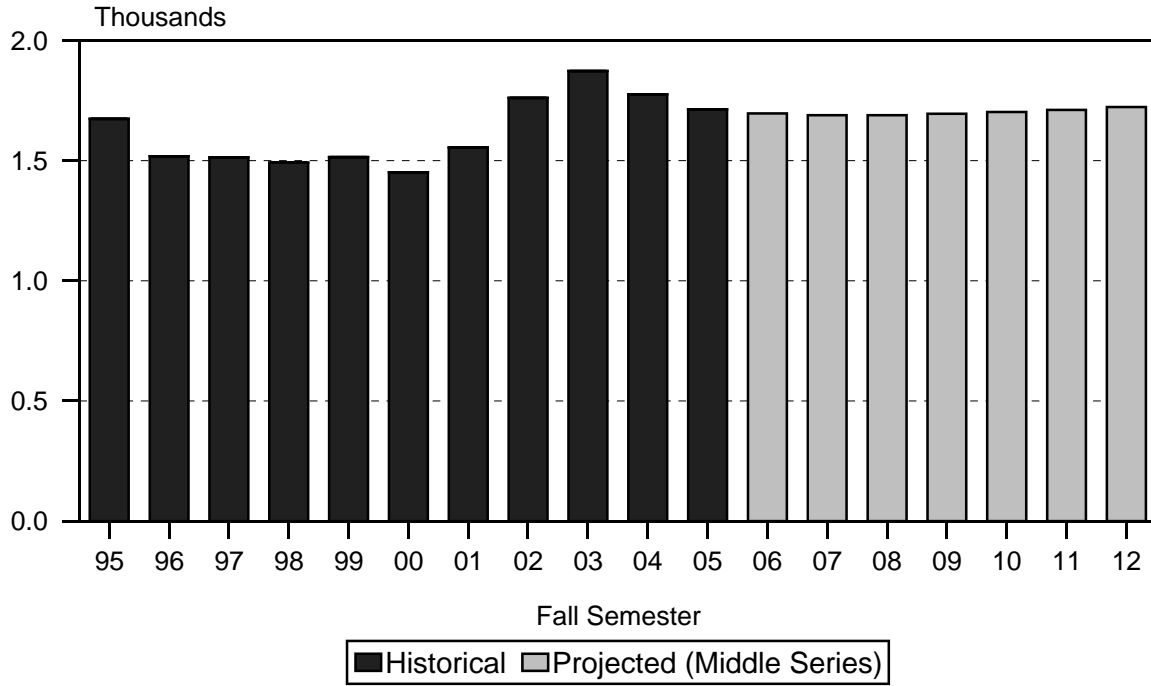
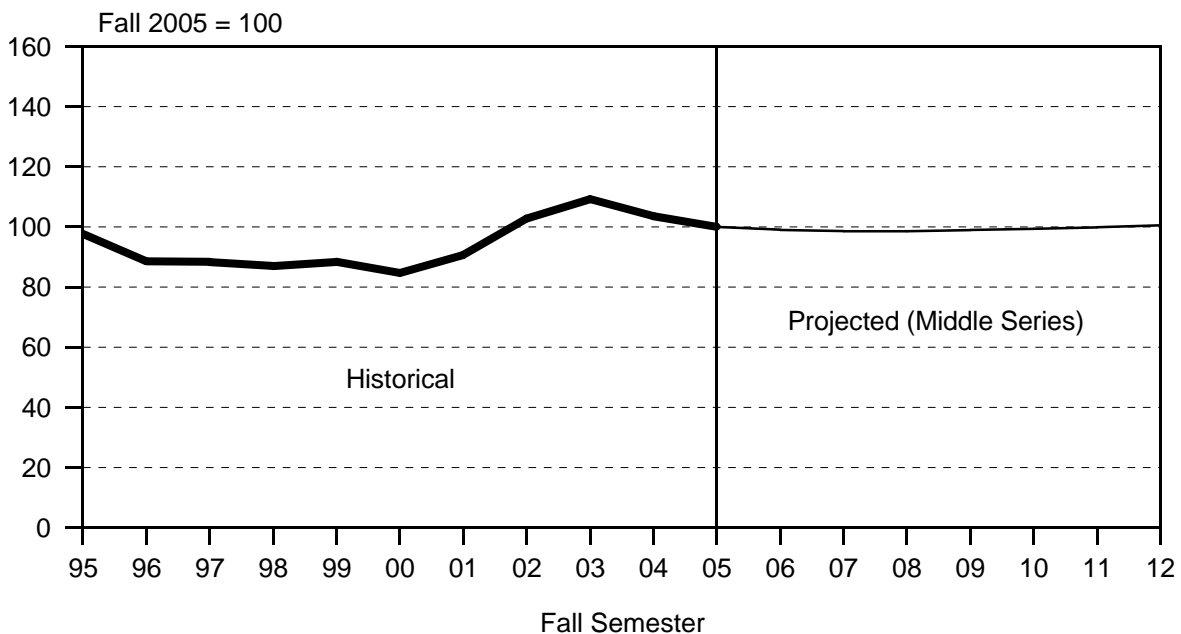


Figure G2  
Enrollment Index



Windward Community College  
Credit Students

Figure G3  
High, Middle and Low Projection Series

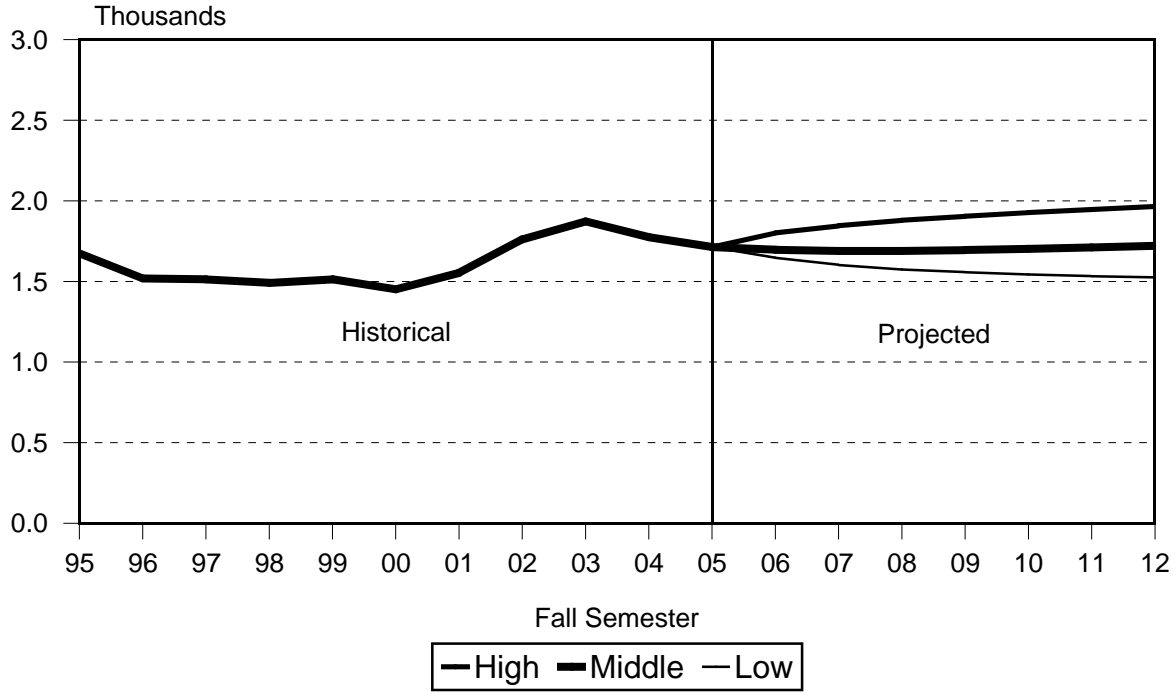


Figure G4  
Historical and Projected Headcount Enrollment

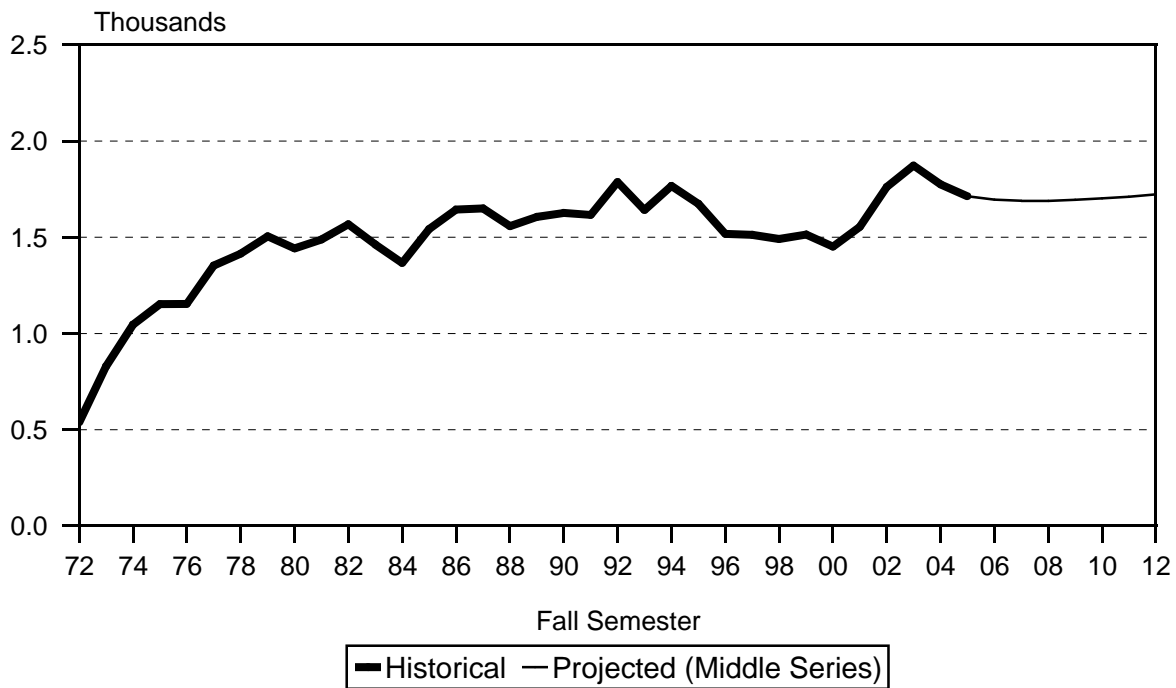


TABLE G1  
HEADCOUNT ENROLLMENT OF CREDIT STUDENTS  
LOW, MIDDLE AND HIGH PROJECTION SERIES  
WINDWARD COMMUNITY COLLEGE  
FALL 2005 TO FALL 2012

PROJECTION SERIES	ACTUAL	PROJECTED						
	2005	2006	2007	2008	2009	2010	2011	2012
<b>HIGH SERIES TOTAL .....</b>	<b>1,713</b>	<b>1,801</b>	<b>1,846</b>	<b>1,880</b>	<b>1,905</b>	<b>1,927</b>	<b>1,946</b>	<b>1,966</b>
Program:								
Liberal Arts .....	1,338	1,424	1,466	1,496	1,515	1,530	1,543	1,556
Career & Technical Ed .....	19	19	19	19	20	21	21	21
Unclassified .....	84	90	90	91	91	93	94	96
Home-Based at Other UH 1/.	272	268	271	274	279	283	288	293
Registration Status:								
First Time .....	389	411	397	396	391	386	382	379
Transfer .....	308	278	290	301	313	324	336	348
Returning .....	131	154	154	154	154	154	154	154
Continuing .....	885	958	1,005	1,029	1,047	1,063	1,074	1,085
<b>MIDDLE SERIES TOTAL 2/ .....</b>	<b>1,713</b>	<b>1,696</b>	<b>1,689</b>	<b>1,689</b>	<b>1,695</b>	<b>1,702</b>	<b>1,711</b>	<b>1,723</b>
Program:								
Liberal Arts .....	1,338	1,380	1,400	1,412	1,421	1,428	1,435	1,444
Career & Technical Ed .....	19	18	18	18	18	19	19	19
Unclassified .....	84	77	69	66	66	65	65	66
Home-Based at Other UH 1/.	272	221	202	193	190	190	192	194
Registration Status:								
First Time .....	389	383	371	366	362	356	353	351
Transfer .....	308	271	281	290	299	309	318	327
Returning .....	131	143	143	143	143	143	143	143
Continuing .....	885	899	894	890	891	894	897	902
<b>LOW SERIES TOTAL .....</b>	<b>1,713</b>	<b>1,647</b>	<b>1,602</b>	<b>1,574</b>	<b>1,557</b>	<b>1,543</b>	<b>1,532</b>	<b>1,525</b>
Program:								
Liberal Arts .....	1,338	1,342	1,332	1,322	1,314	1,305	1,297	1,291
Career & Technical Ed .....	19	18	18	18	18	18	18	18
Unclassified .....	84	72	64	60	58	56	55	55
Home-Based at Other UH 1/.	272	215	188	174	167	164	162	161
Registration Status:								
First Time .....	389	372	359	353	350	345	341	340
Transfer .....	308	245	245	245	245	245	245	245
Returning .....	131	131	131	131	131	131	131	131
Continuing .....	885	899	867	845	831	822	815	809

1/ Students whose home-campus, as defined in Banner / ODS, is not Windward Community College.

2/ The remaining tables in the report use the Middle Projection Series.



TABLE G2 (cont.)

REGISTRATION STATUS	HISTORICAL							PROJECTED						
	1999	2000	2001	2002	2003	2004	2005	2006	2007	2008	2009	2010	2011	2012
Continuing .....	789	754	747	851	1,092	1,088	885	899	894	890	891	894	897	902
Liberal Arts .....	695	680	680	769	807	796	710	714	737	747	754	758	762	766
Career & Technical Ed .....	34	27	15	7	10	9	6	9	9	9	9	9	9	9
Unclassified .....	60	47	52	75	83	49	39	41	34	31	30	29	29	29
Home-Based at Other UH 1/.....					192	234	130	135	114	103	98	98	97	98

1/ Students whose home-campus, as defined in Banner / ODS, is not Windward Community College.

2/ Breakouts for Fall 2002 to Fall 2004 have been adjusted with information taken from Datamart; therefore, counts may not tie to those reported elsewhere.

3/ Includes GED, students from Hawai'i who are not recent high school graduates and records with invalid high school code.



TABLE G3  
HEADCOUNT ENROLLMENT, BY PROGRAM  
MIDDLE PROJECTION SERIES  
WINDWARD COMMUNITY COLLEGE  
FALL 2005 TO FALL 2012

PROGRAM	ACTUAL	PROJECTED						
	2005	2006	2007	2008	2009	2010	2011	2012
Total Students .....	1,713	1,696	1,689	1,689	1,695	1,702	1,711	1,723
General & Pre-Prof Ed .....	1,338	1,380	1,400	1,412	1,421	1,428	1,435	1,444
Liberal Arts .....	1,338	1,380	1,400	1,412	1,421	1,428	1,435	1,444
Career & Technical Ed .....	19	18	18	18	18	19	19	19
Technology .....	19	18	18	18	18	19	19	19
Unclassified .....	356	298	271	259	256	255	257	260
Regular Unclassified 1/ .....	73	69	62	58	58	58	57	59
Home-Based Other UH 2/ ..	272	221	202	193	190	190	192	194
Special Students .....	11	8	7	8	8	7	8	7
Early Admit .....	11	8	7	8	8	7	8	7

1/ Includes records with invalid data on education level.

2/ Students whose home-campus, as defined in Banner / ODS, is not Windward Community College.



APPENDIX A  
HAWAI'I PUBLIC HIGH SCHOOL SENIORS, BY SCHOOL DISTRICT  
ACADEMIC YEARS 1998-99 TO 2011-12

SCHOOL DISTRICT	HISTORICAL 1/								PROJECTED 2/					
	1998-99	1999-00	2000-01	2001-02	2002-03	2003-04	2004-05	2005-06	2006-07	2007-08	2008-09	2009-10	2010-11	2011-12
TOTAL .....	10,582	10,858	10,430	10,692	10,452	10,677	10,794	11,080	11,182	10,684	10,659	10,621	10,625	10,660
O'ahu Districts .....	6,751	6,970	6,573	6,719	6,514	6,668	6,725	7,183	7,278	6,788	6,741	6,679	6,663	6,671
Honolulu District .....	1,957	2,126	1,913	1,982	1,825	1,767	1,850	1,911	1,992	1,807	1,783	1,739	1,706	1,676
Central District .....	1,858	1,842	1,744	1,875	1,854	1,842	1,860	1,926	1,945	1,865	1,860	1,854	1,851	1,849
Leeward District .....	1,833	1,827	1,782	1,765	1,775	2,012	1,995	2,229	2,309	2,146	2,150	2,160	2,194	2,247
Windward District .....	1,103	1,175	1,134	1,097	1,060	1,047	1,020	1,117	1,032	970	948	926	912	899
Neighbor Island Districts .....	3,817	3,880	3,844	3,820	3,780	3,808	3,885	3,687	3,635	3,647	3,655	3,661	3,682	3,710
Hawai'i District .....	1,744	1,847	1,788	1,724	1,767	1,758	1,768	1,726	1,658	1,687	1,695	1,706	1,722	1,745
Maui District .....	1,299	1,333	1,339	1,375	1,356	1,338	1,408	1,248	1,313	1,289	1,297	1,306	1,312	1,321
Kauai District .....	774	700	717	721	657	712	709	713	664	671	663	649	648	644
Other Schools .....	14	8	13	153	158	201	184	210	269	249	263	281	280	279
Special Schools .....	14	8	13	21	16	12	3	12	17	9	9	11	10	9
Charter Schools 3/ .....				132	142	189	181	198	252	240	254	270	270	270

1/ Department of Education for the State of Hawai'i.

2/ Department of Education, "Statewide Enrollment Projections, 2006-07 to 2011-12," September 2005.

3/ Includes all districts.

Note: Counts have been adjusted by UH IRO to include Special Education seniors for all years shown.

APPENDIX B  
HAWAI'I HIGH SCHOOL GRADUATES  
WICHE HISTORICAL AND PROJECTED - 2003 SERIES

Year	Total	% Chge	Public	% Chge	Private	% Chge
1987-88	13,400		10,751		2,649	
1988-89	13,059	-2.5	10,551	-1.9	2,508	-5.3
1989-90	11,908	-8.8	9,526	-9.7	2,382	-5.0
1990-91	11,896	-0.1	9,519	-0.1	2,377	-0.2
1991-92	11,970	0.6	9,610	1.0	2,360	-0.7
1992-93	11,585	-3.2	9,284	-3.4	2,301	-2.5
1993-94	12,337	6.5	9,900	6.6	2,437	5.9
1994-95	12,359	0.2	9,972	0.7	2,387	-2.1
1995-96	11,854	-4.1	9,405	-5.7	2,449	2.6
1996-97	11,436	-3.5	8,975	-4.6	2,461	0.5
1997-98	12,107	5.9	9,670	7.7	2,437	-1.0
1998-99	12,302	1.6	9,713	0.4	2,589	6.2
1999-00	12,950	5.3	10,437	7.5	2,513	-2.9
2000-01	12,628	-2.5	10,102	-3.2	2,526	0.5
2001-02	12,991	2.9	10,452	3.5	2,539	0.5
2002-03	12,577	-3.2	10,047	-3.9	2,530	-0.4
2003-04	12,697	1.0	10,128	0.8	2,569	1.5
2004-05	12,924	1.8	10,126	0.0	2,798	8.9
2005-06	13,003	0.6	10,327	2.0	2,676	-4.4
2006-07	13,050	0.4	10,416	0.9	2,634	-1.6
2007-08	13,804	5.8	10,775	3.4	3,029	15.0
2008-09	13,517	-2.1	10,547	-2.1	2,970	-1.9
2009-10	13,094	-3.1	10,204	-3.3	2,890	-2.7
2010-11	12,834	-2.0	10,035	-1.7	2,799	-3.1
2011-12	12,685	-1.2	9,882	-1.5	2,803	0.1
2012-13	12,333	-2.8	9,462	-4.3	2,871	2.4
2013-14	12,178	-1.3	9,437	-0.3	2,741	-4.5
2014-15	11,461	-5.9	8,894	-5.8	2,567	-6.3
2015-16	11,571	1.0	8,978	0.9	2,593	1.0
2016-17	11,216	-3.1	8,692	-3.2	2,524	-2.7
2017-18	11,578	3.2	8,962	3.1	2,616	3.6

Note: Horizontal line delimits WICHE historical from projected numbers.

Note: WICHE "Historical" data may differ from UH IRO compiled data shown in the MAPS reports on the High School Background of First-Time Students.

Source: Western Interstate Commission for Higher Education, December 2003.