

ENROLLMENT PROJECTIONS
UNIVERSITY OF HAWAI'I AT MANOA
FALL 2002 TO FALL 2008

Institutional Research Office

University of Hawai'i

February 2002

File Reference: Management and Planning Support Folder, Projections

Reports available online at: <http://www.hawaii.edu/iro/maps.htm>

ENROLLMENT PROJECTIONS UNIVERSITY OF HAWAII AT MANOA FALL 2002 TO FALL 2008

INTRODUCTION

This report presents information on historical and projected headcount enrollment at the University of Hawai'i at Mānoa. The projections are statistical extrapolations of current trends in enrollment. They are not target enrollment projections, and in general do not take into consideration planned or potential changes in University policies or procedures. They should be considered as an extension into the future of current enrollment trends, and may be used as a foundation for further work in planning and budgeting.

The enrollment projections are based upon unduplicated headcounts of students enrolled in credit courses. Included are students enrolled in regular day courses, as well as students enrolled in continuing education credit courses offered by Outreach College. Special students (auditors, concurrent students, and early admits) are also included for all years, both historical and projected.

Historical data are included in the figures and tables to facilitate comparison and analysis. They were extracted from the Student Enrollment Reports, the Academic Crossover Studies and the Course Registration Reports. Information on Hawai'i public high school seniors by school district, as well as Hawai'i public and private high school graduates, are provided in appendices.

METHODOLOGY

The Fall 2002 projection report offers three projection series - high, middle and low. The values in the separate series were produced by varying the input values used in the model from among the range of available values. Otherwise, the model uses the same general methodology for all three series.

The projections are broken down by classified undergraduate, classified graduate and unclassified student enrollments. Classified undergraduate enrollment is further subdivided by education level and registration status: first-time, continuing / returning and transfer. Classified graduate enrollment is sub-divided by education level. Unclassified enrollment is sub-divided by undergraduate and graduate.

First-time freshmen are divided into categories based upon sector and location of high school; each category is forecast separately. The four categories used in this report are: direct entrants from Hawai'i public high schools, direct entrants from Hawai'i private high schools, students from the U.S. mainland and possessions, and other. Direct entrants are students who enter UH Mānoa in the fall semester immediately following graduation from high school. This group represents the traditional cohort of first-time freshmen.

The enrollment projections of **direct public entrants** are based upon the forecast of public

high school seniors provided by the Hawai'i Department of Education (see Appendix A). Historical ratios of direct public entrants to public high school senior enrollment are calculated by school district. Enrollment for each year is projected by applying averages of these ratios (by district) to the annual DOE senior enrollment forecast (ending in June). For outlying years, where DOE data are not available, senior enrollment is extrapolated from lower level enrollments using continuation rates. The DOE forecast upon which these projections are based was released in January 2000; at the time this report was completed, the updated 5-year forecast was not yet available.

The projection of **direct private entrants** relies upon the private high school graduate forecast for Hawai'i published by the Western Interstate Commission for Higher Education (WICHE), released in February 1998 (see Appendix B). Historical ratios of direct private entrants to total Hawai'i private high school graduates are first calculated. An average ratio is then applied to the WICHE annual forecast to yield the projected number of first-time freshmen from private high schools.

First-time freshmen from the **U.S. mainland and possessions** are forecast for 2002 to 2008 using an annual growth rate based upon the increases realized from Fall 1999 to Fall 2001. Starting with the Fall 2001 number as the base year, first-time freshmen from the U.S. mainland and possessions are forecast to grow by 15%, 10% or 0% for the three series (high to low, respectively) through 2006 and then hold constant. This assumed rate of growth is conservative, in that the actual growth rate has averaged 51% over the last three years. **Other first-time freshmen**, including those from foreign countries and those who graduated from high school prior to the 2000-01 academic year, are both small in absolute terms and stable in number. They are therefore set to constants.

Classified undergraduate continuing / returning enrollment is forecast using continuation rates. In general, a continuation rate is the ratio of continuing / returning enrollment at a given education level to the previous fall semester's total enrollment at the next lower level. For example, the sophomore continuation rate is the ratio of continuing / returning sophomores to the previous year's total freshmen enrollment count. In this report, freshmen are projected using the previous year's first-time freshmen, sophomores using the previous year's freshmen, juniors using the previous year's sophomores, and seniors using the sum of the previous year's juniors and seniors. Average continuation rates are applied to the actual or projected total enrollment by education level to forecast the following year's continuing / returning enrollment at the next higher level.

Many different projection methods have been used to forecast **Classified undergraduate transfer** enrollment over the years. No reliable correlation with another more predictable variable has yet been found. For this report, two different projection methods have been used: the high and middle series have been forecast using annual growth rates of 3.0% and 1.5%, respectively, through 2006, then held constant through 2008; the low series has been set to a constant for all projected years. The breakdown by educational level is made for all three projection series using current year (Fall 2001) distribution ratios.

Classified graduate enrollment is sub-divided by education level, including: master,

doctorate, first-professional, professional diploma / post baccalaureate and graduate special. Each education level is forecast separately, based upon examination of trends and, in some cases, input from administrators. First-professional (including MD and JD candidates), professional diploma / post baccalaureate and graduate special enrollments are set to constants. ArchD candidates in the School of Architecture are forecast using small growth constants. Master and doctorate enrollment are forecast using annual growth rates of 2.5%, 0.5% and 0% for the high, middle and low series, respectively.

Unclassified students are broken out by undergraduate / graduate. The inclusion of Outreach College data to the general enrollment count beginning in Fall 1999 resulted in large increases in the number of unclassified students. Whether this apparent growth will continue or is merely an adjustment to a higher overall level is as yet unclear. For simplicity, unclassified students are set to constants for all projected years.

In addition to the high, middle and low series enrollment projections given in Table 1, detailed tables are included which project headcount enrollment, student semester hours (SSH) offered, and full-time equivalent course enrollments. **The data in all subsequent tables are based upon the middle projection series presented in Table 1.**

Table 2 presents seven years of historical data and detailed forecasts by education level and registration status. Table 3 presents headcount enrollment by college, broken out by lower division, upper division and graduate level. Student semester hours offered are shown in Table 4 and full-time equivalent (FTE) course enrollments are given in Table 5. Tables 3, 4 and 5 utilize Fall 2001 historical data plus the projected enrollments for 2002 to 2008 as input, then provide enrollment forecasts by college using the Fall 2001 proportions across subunits. Headcount enrollment by attendance status is provided in Table 6. Two-year average proportions have been used to divide the projected headcounts between full-time and part-time students. Appendix A shows historical and DOE projected enrollments of Hawai'i public high school seniors by geographic district. Historical data is current through the 2001-02 academic year; the forecast was last revised in January of 2000. Appendix B gives WICHE forecasts of Hawai'i public and private high school graduates through 2012. This table was released by WICHE in February of 1998.

ANALYSIS AND HIGHLIGHTS

- The Hawai'i Department of Education has forecast decline in public high school seniors through academic year 2002-03, followed by moderate increase through 2005-06 (see Appendix A & Figure 5). Extrapolations for outlying years conducted by UH IRO yield higher numbers of seniors for 2006-07 and 2007-08. WICHE has forecast increases in the number of Hawai'i high school graduates beginning in Fall 2004 through Fall 2008 (see Appendix B & Figure 6). Although both forecasts are dated, the overall pattern is likely to hold in subsequent revisions: decline in high school graduates in the near term and moderate to large increases in high school graduates from the middle to the end of the present decade.
- The increase in the number of first-time freshmen at UH Mānoa measured in Fall 1999, 2000 and 2001 was due largely to increases in freshmen from the U.S.

mainland (see Table 2 & Figure 7). First-time freshmen from the U.S mainland and possessions increased from 91 in Fall 1998 to 306 in Fall 2001 (+236%). This increase was the result, at least in part, to active recruiting efforts. Although the events of September 11th, 2001 may deflate further increases of this magnitude, continued growth in freshmen from the U.S. mainland is expected. The projections use conservative growth rates of 15%, 10% and 0% for the high, middle and low series, respectively.

- Continuing / Returning undergraduate enrollment has declined since Fall 1994 (see Table 2 and Figure 8). However, the rate of decrease has slowed from -7.2% in Fall 1997 to near zero in Fall 2001. Continuing / returning freshmen enrollment grew 14.2% in Fall 2001. As the events of September 11th may dampen recruiting efforts on the U.S. mainland and abroad, the opposite affect may be realized here at home. Students who might otherwise have transferred out of UH Manoa may elect to stay. Also, the downturn in the economy may boost overall enrollments, as some students delay entry into the job market. Moderate growth in continuing / returning students may be anticipated.
- After declining from the mid to late 1990s, enrollments in Master and Doctorate programs seem to have stabilized (see Table 2 & Figure 9). Doctorate enrollment grew 1.0% in Fall 2001, while Masters enrollment declined only slightly. If classified graduate enrollment is negatively correlated to the economy, as is generally believed, the University may realize modest increases in graduate enrollment over the next several years.
- First-Professional enrollment is generally stable. The MD and JD programs have cohorts that are restricted in size. On the other hand, the ArchD program is still new, and although all architecture majors are admitted to the program, only those who pass portfolio review are considered to be first-professional. The total enrollment in ArchD grew by 3 students in Fall 2000 and by 6 in Fall 2001. Until more data is available, a conservative forecast seems justified. Continued growth at a constant rate of 5 students per year is forecast (middle series).
- The Professional Diploma in Education and Post Baccalaureate programs in Secondary and Special education have undergone changes in recent years and do not yet show distinct trends. The College of Education expects the PB program eventually to enroll from 80 to 100 students per year. However, after reaching 151 students in Fall 1999, enrollment in the two programs declined to 63 in Fall 2001. Since the numbers are small in absolute terms, they are set to constants.
- Graduate Special enrollment is generally stable within a small range. The total is also small in absolute terms. Therefore, enrollment is set to a constant for each projection series.

SUMMARY AND CONCLUSION

Enrollment at the University of Hawai'i at Mānoa grew 1.6% in Fall 2001, to 17,532. Enrollment (middle series) is projected to increase 1.7% in Fall 2002 to 17,828, and to continue to grow at an average annual rate of 1.4% through Fall 2008. The current economic environment, as well as security concerns in the aftermath of the events of September 11th, 2001, place more upward than downward pressure on enrollment. Therefore, enrollment for Fall 2002 could grow by as much as 4.0% (high series) or fall by as little as 0.6% (low series).

Overall, the enrollment projection for UH Mānoa is for continued modest growth, with potential for significantly higher increase or slight decline.

The effects of the events of September 11th add a new measure of uncertainty to the enrollment forecast. For example, much of the increase in first-time enrollment since Fall 1998 has been due to incoming freshmen from the U.S. mainland. How this growth trend will be affected by security concerns is not clear. On the other hand, much of the malaise in classified undergraduate continuing / returning enrollment has been due to attrition of upper division students, who ostensibly have been transferring to U.S. mainland institutions closer to the hot job markets. Given current economic and security concerns, more of these students may elect to complete their studies at UH Mānoa. Similarly, although the DOE is forecasting declining enrollment of high school seniors for the State through academic year 2003-04, UH Mānoa may realize higher going rates of local high school graduates, who elect to attend college closer to home. If so, these students may boost first-time enrollment counts (or at least maintain them at current levels).

Enrollment in graduate programs is generally considered to be inversely correlated to the economy. The declines in PhD and Masters level programs at UH Mānoa which have persisted since Fall 1994 seem to be ending. PhD enrollment grew 1% in Fall 2001, while Masters level enrollment was flat. With a cooling economy, these programs may begin to register modest rates of growth.

University of Hawai'i at Mānoa
Enrollment Projections

Figure 1
Historical and Projected Headcount Enrollment

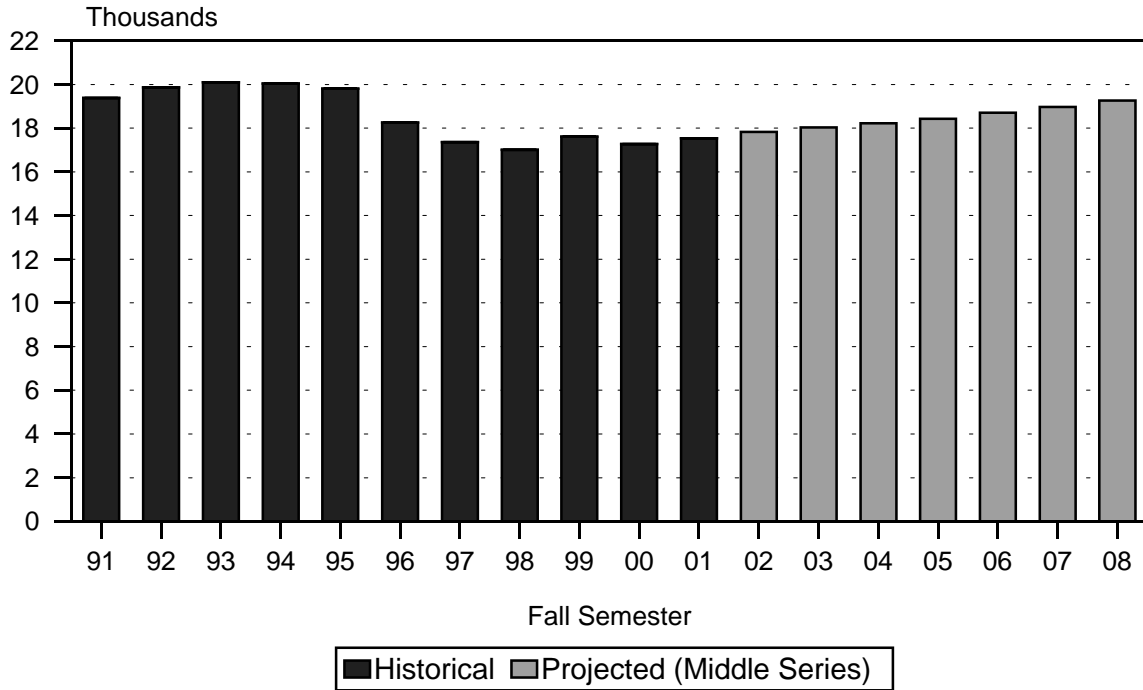
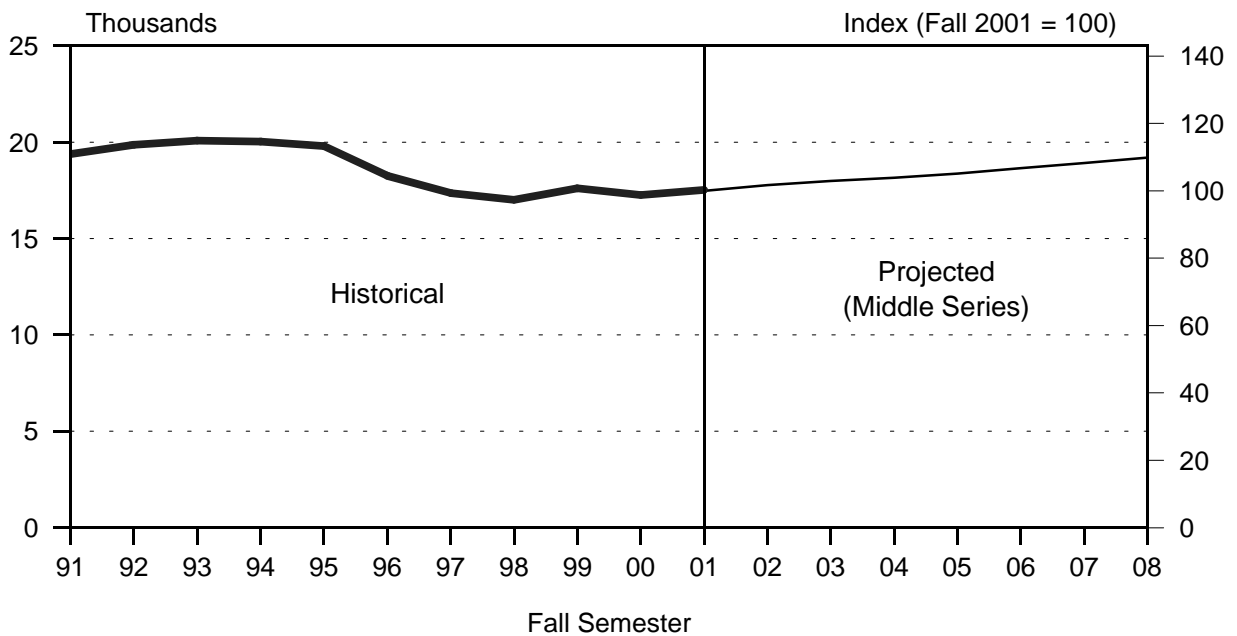


Figure 2
UH Mānoa Headcount Enrollment - 10 Year



University of Hawai'i at Mānoa
Enrollment Projections

Figure 3
High, Middle and Low Projection Series

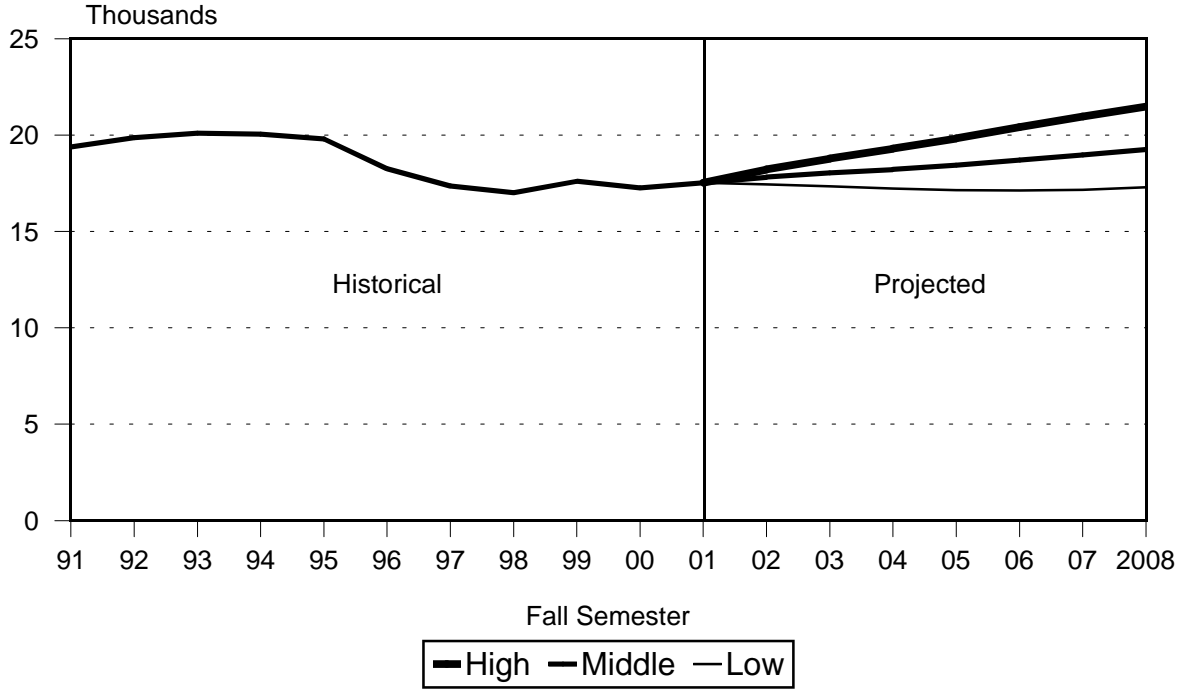
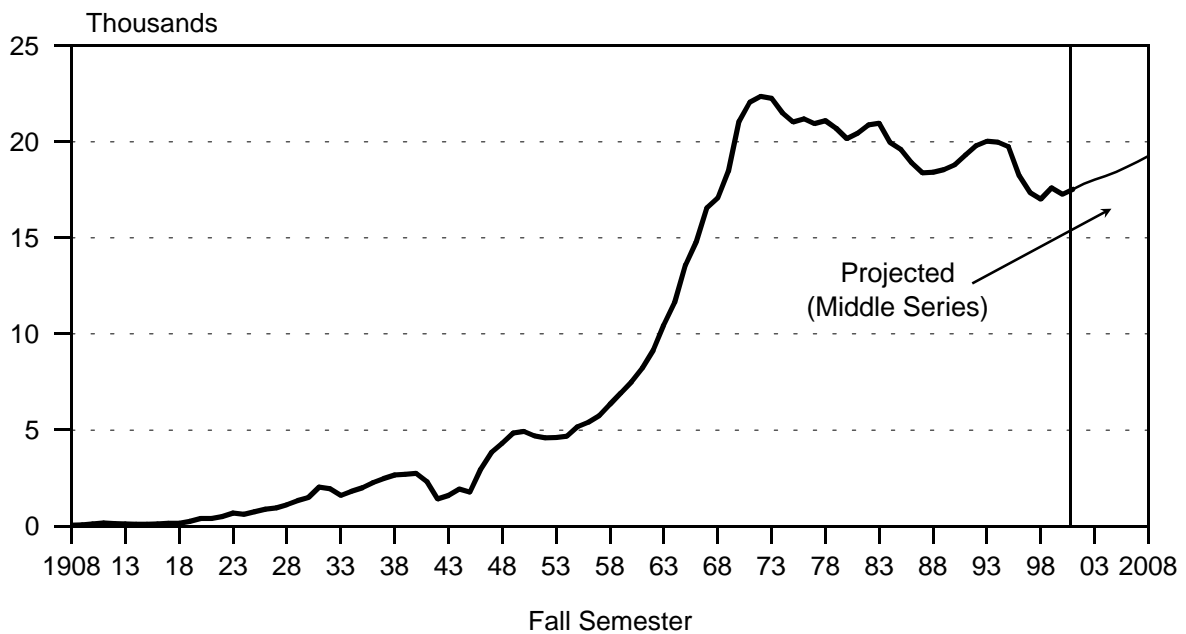
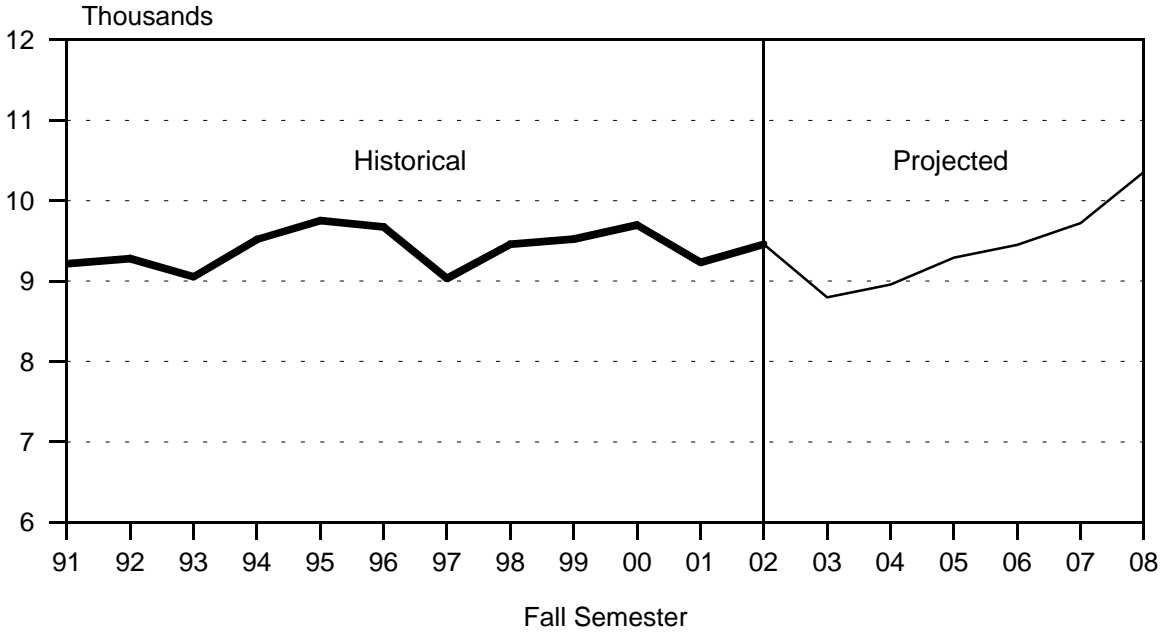


Figure 4
UH Mānoa Headcount Enrollment - Historical



University of Hawai'i at Mānoa
Enrollment Projections

Figure 5
Hawai'i Public High School Seniors



Source: Department of Education, State of Hawai'i; January 2000.
Figures for 2007 & 2008 have been extrapolated by UH IRO.

Figure 6
Hawai'i Private High School Graduates



Sources: Historical data from UH IRO; Projected data from WICHE.

University of Hawai'i at Mānoa
Enrollment Projections

Figure 7
First-Time Freshmen by Geographic Origin

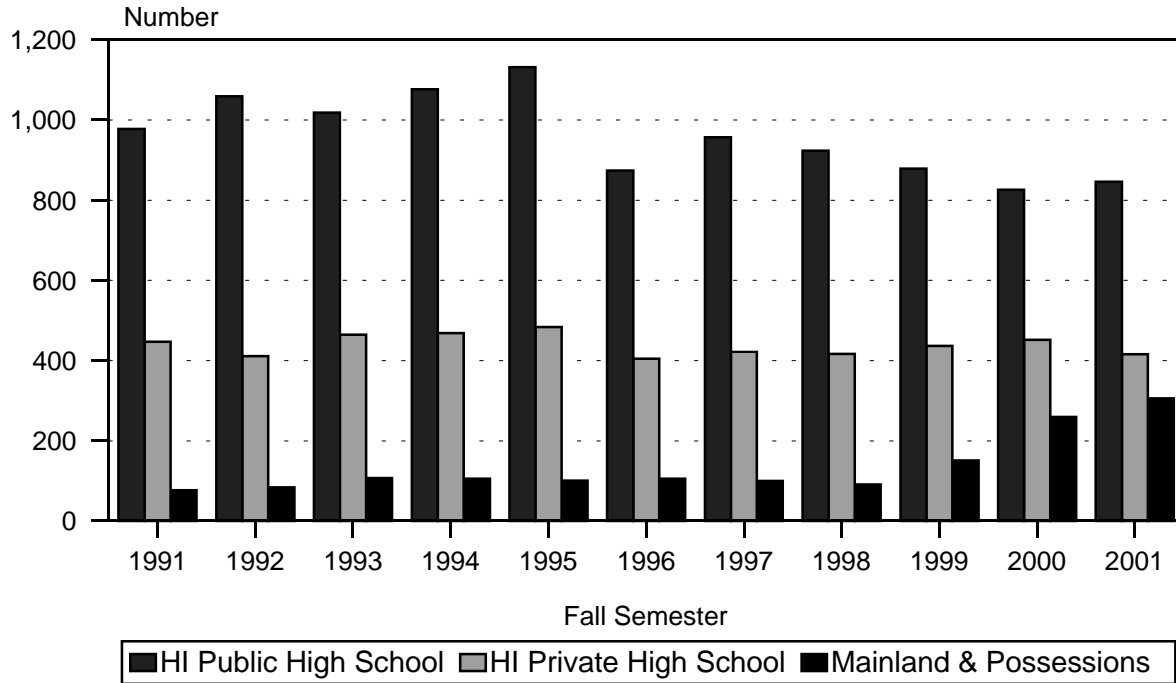
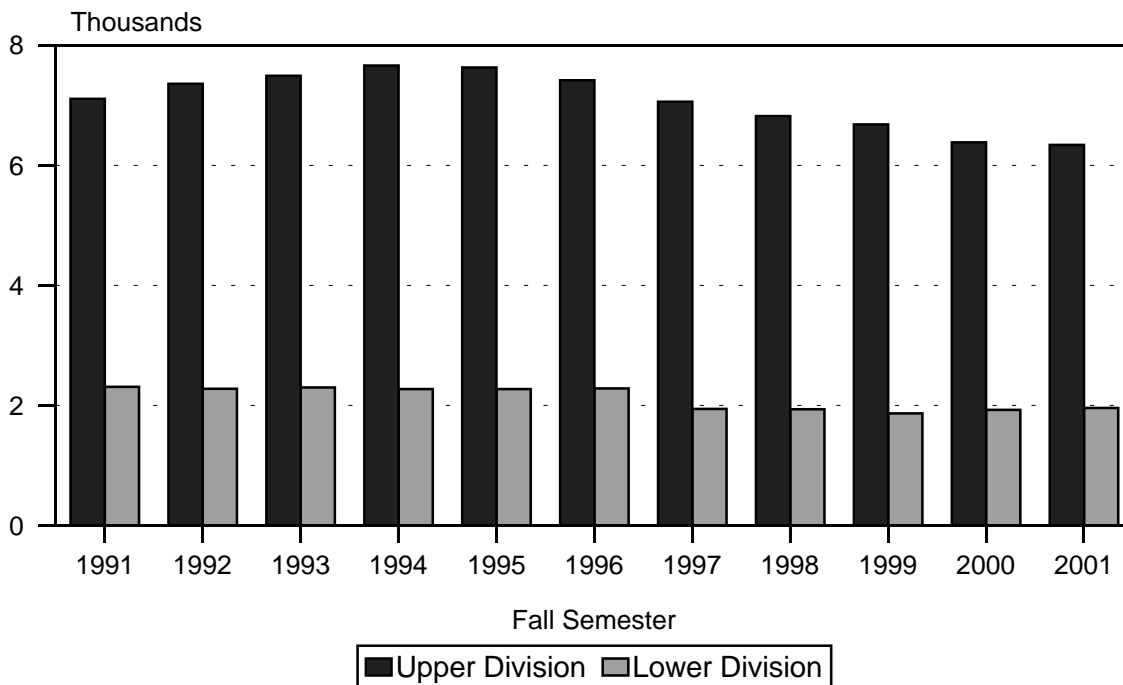


Figure 8
Continuing / Returning Classified Undergraduates



University of Hawai'i at Mānoa
Enrollment Projections

Figure 9
Classified Graduate Students

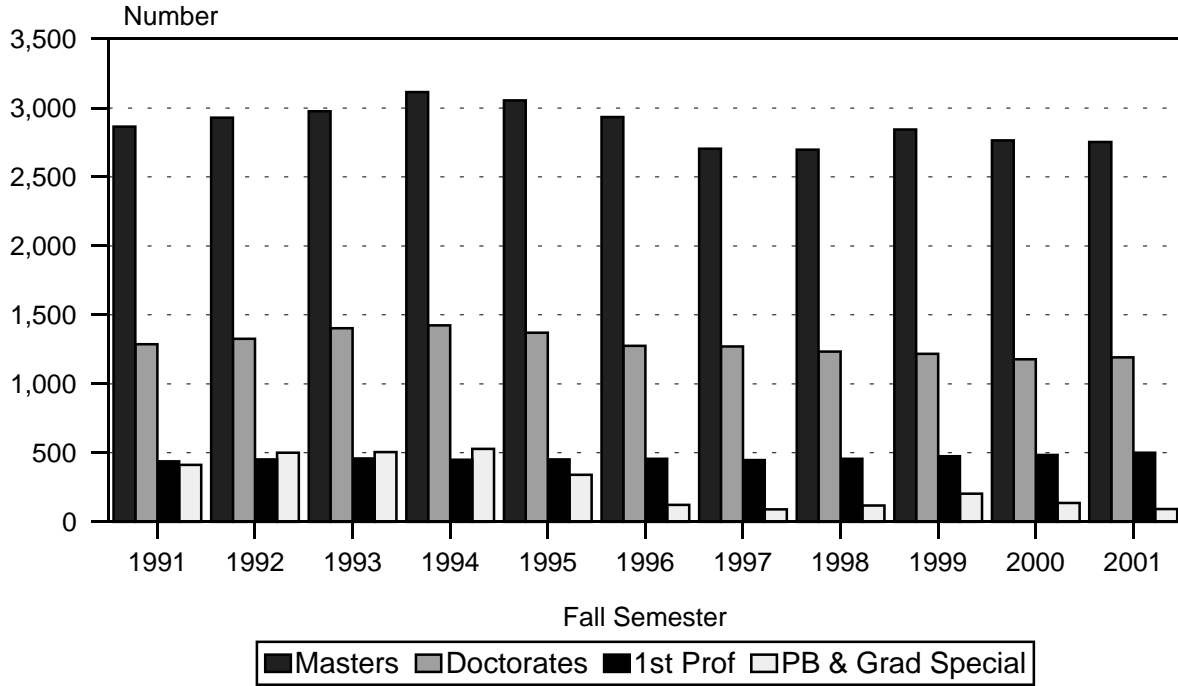
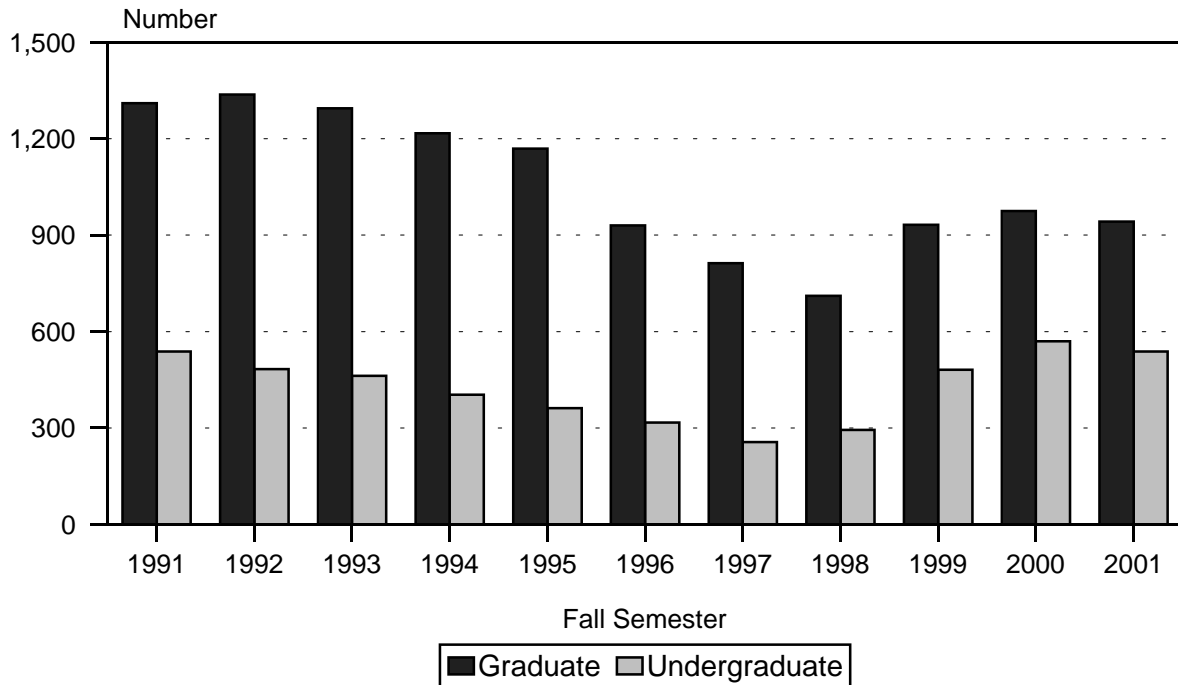


Figure 10
Unclassified Students



Outreach College was added to the to the general enrollment count in Fall 1999.

TABLE 1
HEADCOUNT ENROLLMENT OF CREDIT STUDENTS
LOW, MIDDLE AND HIGH PROJECTION SERIES
UNIVERSITY OF HAWAI'I AT MANOA
FALL 2001 TO FALL 2008

PROJECTION SERIES	ACTUAL	PROJECTED						
	2001	2002	2003	2004	2005	2006	2007	2008
HIGH SERIES TOTAL	17,532	18,225	18,781	19,298	19,828	20,419	20,968	21,490
Classified	16,021	16,696	17,252	17,769	18,299	18,890	19,439	19,961
Undergraduates	11,485	11,998	12,446	12,854	13,272	13,748	14,179	14,580
First-Time Freshmen	1,650	1,743	1,706	1,761	1,862	1,962	2,003	2,076
Continuing / Returning	8,298	8,672	9,110	9,414	9,681	10,005	10,395	10,723
Transfer	1,537	1,583	1,630	1,679	1,729	1,781	1,781	1,781
Graduates	4,536	4,698	4,806	4,915	5,027	5,142	5,260	5,381
Unclassified	1,511	1,529	1,529	1,529	1,529	1,529	1,529	1,529
Undergraduates	569	570	570	570	570	570	570	570
Graduates	942	959	959	959	959	959	959	959
MIDDLE SERIES TOTAL 1/	17,532	17,828	18,038	18,223	18,433	18,701	18,975	19,267
Classified	16,021	16,317	16,527	16,712	16,922	17,190	17,464	17,756
Undergraduates	11,485	11,737	11,922	12,082	12,267	12,510	12,759	13,026
First-Time Freshmen	1,650	1,687	1,634	1,668	1,738	1,802	1,844	1,916
Continuing / Returning	8,298	8,490	8,705	8,807	8,898	9,053	9,260	9,455
Transfer	1,537	1,560	1,583	1,607	1,631	1,655	1,655	1,655
Graduates	4,536	4,580	4,605	4,630	4,655	4,680	4,705	4,730
Unclassified	1,511	1,511	1,511	1,511	1,511	1,511	1,511	1,511
Undergraduates	569	569	569	569	569	569	569	569
Graduates	942	942	942	942	942	942	942	942
LOW SERIES TOTAL	17,532	17,435	17,349	17,229	17,146	17,119	17,166	17,288
Classified	16,021	16,005	15,919	15,799	15,716	15,689	15,736	15,858
Undergraduates	11,485	11,478	11,392	11,272	11,189	11,162	11,209	11,331
First-Time Freshmen	1,650	1,608	1,526	1,521	1,549	1,566	1,608	1,676
Continuing / Returning	8,298	8,483	8,479	8,364	8,253	8,209	8,214	8,268
Transfer	1,537	1,387	1,387	1,387	1,387	1,387	1,387	1,387
Graduates	4,536	4,527	4,527	4,527	4,527	4,527	4,527	4,527
Unclassified	1,511	1,430	1,430	1,430	1,430	1,430	1,430	1,430
Undergraduates	569	540	540	540	540	540	540	540
Graduates	942	890	890	890	890	890	890	890

1/ The remaining tables in the report use the Middle Projection Series.

of values for each series - must do so because of the interconnectedness of the model.

TABLE 2
HEADCOUNT ENROLLMENT OF CREDIT STUDENTS, BY REGISTRATION STATUS
MIDDLE PROJECTION SERIES
UNIVERSITY OF HAWAI'I AT MANOA
FALL 1995 TO FALL 2008

	ACTUAL							PROJECTED						
	1995	1996	1997	1998	1999	2000	2001	2002	2003	2004	2005	2006	2007	2008
TOTAL HEADCOUNT 1/	19,801	18,252	17,365	17,013	17,612	17,263	17,532	17,828	18,038	18,223	18,433	18,701	18,975	19,267
CLASSIFIED	18,270	17,005	16,296	16,008	16,199	15,718	16,021	16,317	16,527	16,712	16,922	17,190	17,464	17,756
UNDERGRADUATES	13,050	12,216	11,782	11,500	11,458	11,151	11,485	11,737	11,922	12,082	12,267	12,510	12,759	13,026
FRESHMEN	2,295	1,913	1,920	1,923	1,925	2,014	2,142	2,176	2,133	2,159	2,240	2,320	2,374	2,454
SOPHOMORES	2,376	2,227	2,074	2,037	2,019	2,030	2,155	2,267	2,302	2,275	2,304	2,378	2,443	2,486
JUNIORS	3,227	3,116	2,996	2,822	2,761	2,669	2,834	2,967	3,096	3,143	3,124	3,166	3,245	3,314
SENIORS	5,152	4,960	4,792	4,718	4,753	4,438	4,354	4,327	4,391	4,505	4,599	4,646	4,697	4,772
FIRST-TIME FRESHMEN	1,778	1,436	1,527	1,483	1,529	1,607	1,650	1,687	1,634	1,668	1,738	1,802	1,844	1,916
DIRECT FROM HI PUBLIC HS	1,132	874	957	924	879	826	846	875	799	816	845	860	885	935
DIRECT FROM HI PRIVATE HS	484	405	422	417	437	452	416	399	388	368	368	372	389	411
FROM U.S. MAINLAND & POSSESSIO	101	105	100	91	151	260	306	337	371	408	449	494	494	494
OTHER FIRST-TIME FRESHMEN 2/ ..	61	52	48	51	62	69	82	76	76	76	76	76	76	76
CONTINUING / RETURNING	9,901	9,699	9,002	8,755	8,548	8,307	8,298	8,490	8,705	8,807	8,898	9,053	9,260	9,455
FRESHMEN	369	396	274	321	272	288	329	324	332	321	328	342	354	362
SOPHOMORES	1,904	1,885	1,668	1,614	1,595	1,636	1,629	1,733	1,760	1,725	1,746	1,812	1,877	1,920
JUNIORS	2,638	2,615	2,417	2,275	2,182	2,141	2,174	2,297	2,416	2,453	2,424	2,455	2,534	2,603
SENIORS	4,990	4,803	4,643	4,545	4,499	4,242	4,166	4,136	4,197	4,308	4,400	4,444	4,495	4,570
TRANSFER	1,371	1,081	1,253	1,262	1,381	1,237	1,537	1,560	1,583	1,607	1,631	1,655	1,655	1,655
FRESHMEN	148	81	119	119	124	119	163	165	167	170	174	176	176	176
SOPHOMORES	472	342	406	423	424	394	526	534	542	550	558	566	566	566
JUNIORS	589	501	579	547	579	528	660	670	680	690	700	711	711	711
SENIORS	162	157	149	173	254	196	188	191	194	197	199	202	202	202
GRADUATES 3/	5,220	4,789	4,514	4,508	4,741	4,567	4,536	4,580	4,605	4,630	4,655	4,680	4,705	4,730
MASTERS	3,054	2,934	2,704	2,697	2,844	2,765	2,752	2,766	2,780	2,794	2,808	2,822	2,836	2,850
DOCTORATE	1,372	1,275	1,271	1,234	1,217	1,179	1,191	1,197	1,203	1,209	1,215	1,221	1,227	1,233
FIRST-PROFESSIONAL	453	456	448	458	476	485	500	501	506	511	516	521	526	531
PROFESSIONAL DIPLOMA / POST-BACH	272	80	48	61	151	90	63	77	77	77	77	77	77	77
GRADUATE SPECIAL	69	44	43	58	53	48	30	39	39	39	39	39	39	39
UNCLASSIFIED	1,531	1,247	1,069	1,005	1,413	1,545	1,511	1,511	1,511	1,511	1,511	1,511	1,511	1,511
UNDERGRADUATES 4/	362	317	256	294	481	570	569	569	569	569	569	569	569	569
GRADUATES	1,169	930	813	711	932	975	942	942	942	942	942	942	942	942

1/ Total includes Outreach College enrollment, beginning Fall 1999.

2/ Includes students from Foreign Countries and students from Hawai'i who are not recent high school graduates.

3/ Breakout by degree objective for 1st Prof, PD / PB and Graduate Special added Fall 2000.

4/ Includes No Data on education level.

TABLE 3
HEADCOUNT ENROLLMENT OF CREDIT STUDENTS, BY COLLEGE
MIDDLE PROJECTION SERIES
UNIVERSITY OF HAWAI'I AT MANOA
FALL 2001 TO FALL 2008

COLLEGE	ACTUAL	PROJECTED						
	2001	2002	2003	2004	2005	2006	2007	2008
Campus Total	17,532	17,828	18,038	18,223	18,433	18,701	18,975	19,267
Undergraduate Level	12,054	12,306	12,491	12,651	12,836	13,079	13,328	13,595
Lower Division 1/	4,866	5,012	5,004	5,003	5,113	5,267	5,386	5,509
Upper Division	7,188	7,294	7,487	7,648	7,723	7,812	7,942	8,086
Graduate Level 2/	5,478	5,522	5,547	5,572	5,597	5,622	5,647	5,672
Classified	16,021	16,317	16,527	16,712	16,922	17,190	17,464	17,756
Undergraduates	11,485	11,737	11,922	12,082	12,267	12,510	12,759	13,026
Lower Division	4,297	4,443	4,435	4,434	4,544	4,698	4,817	4,940
Upper Division	7,188	7,294	7,487	7,648	7,723	7,812	7,942	8,086
Graduates	4,536	4,580	4,605	4,630	4,655	4,680	4,705	4,730
Unclassified	1,511	1,511	1,511	1,511	1,511	1,511	1,511	1,511
Undergraduate (Lower Division)	569	569	569	569	569	569	569	569
Graduate Level	942	942	942	942	942	942	942	942
COLLEGE OF ARTS & SCIENCES	9,907	10,127	10,257	10,364	10,506	10,703	10,898	11,105
Lower Division	3,743	3,872	3,864	3,863	3,960	4,094	4,197	4,304
Upper Division	4,389	4,467	4,597	4,695	4,731	4,785	4,868	4,960
Graduate Level	1,775	1,788	1,796	1,806	1,815	1,824	1,833	1,841
Arts & Humanities	1,206	1,225	1,244	1,259	1,275	1,291	1,312	1,329
Lower Division	209	218	218	216	223	229	236	240
Upper Division	665	673	690	705	713	721	733	745
Graduate Level	332	334	336	338	339	341	343	344
Languages, Ling & Lit	882	894	904	915	925	936	949	961
Lower Division	120	125	125	124	127	131	135	138
Upper Division	398	402	411	421	426	431	438	445
Graduate Level	364	367	368	370	372	374	376	378
Natural Sciences	1,862	1,895	1,924	1,949	1,973	2,006	2,034	2,076
Lower Division	554	574	573	573	587	608	621	638
Upper Division	918	928	956	979	987	997	1,010	1,033
Graduate Level	390	393	395	397	399	401	403	405
Social Sciences	2,141	2,176	2,210	2,238	2,262	2,291	2,325	2,359
Lower Division	334	347	347	347	354	366	376	384
Upper Division	1,156	1,173	1,204	1,229	1,242	1,256	1,277	1,300
Graduate Level	651	656	659	662	666	669	672	675
General Arts & Sciences	3,643	3,764	3,800	3,824	3,889	3,996	4,092	4,192
Lower Division	2,526	2,608	2,601	2,603	2,669	2,760	2,829	2,904
Upper Division	1,117	1,156	1,199	1,221	1,220	1,236	1,263	1,288
Other Arts & Sciences	173	173	175	179	182	183	186	188
Upper Division	135	135	137	140	143	144	147	149
Graduate Level	38	38	38	39	39	39	39	39
SCH OF HAWN, ASIAN & PAC ST	215	219	222	224	225	228	233	235
Lower Division	25	26	26	26	26	27	29	29
Upper Division	103	105	108	109	110	112	114	116
Graduate Level	87	88	88	89	89	89	90	90

TABLE 3 (cont.)

COLLEGE	ACTUAL 2001	PROJECTED						
		2002	2003	2004	2005	2006	2007	2008
SCH OF OCEAN & EARTH SCI TECH.....	290	295	298	300	303	307	310	315
Lower Division	52	54	54	54	55	57	58	60
Upper Division	78	80	82	83	84	86	87	89
Graduate Level	160	161	162	163	164	164	165	166
SCHOOL OF ARCHITECTURE	212	219	228	234	243	251	260	268
Lower Division	54	55	56	55	57	58	60	62
Upper Division	120	121	124	126	128	130	132	133
Graduate Level	12	12	12	12	12	12	12	12
1st Professional (ArchD)	26	31	36	41	46	51	56	61
COLLEGE OF BUSINESS ADMIN	1,205	1,216	1,237	1,255	1,268	1,280	1,294	1,314
Lower Division	3	3	3	3	3	3	3	3
Upper Division	781	788	807	824	835	844	857	873
Graduate Level	421	425	427	428	430	433	434	438
SCH OF TRAVEL INDUSTRY MGT	354	361	368	374	378	386	392	400
Lower Division	88	91	91	91	93	97	99	101
Upper Division	243	247	254	260	261	265	269	275
Graduate Level	23	23	23	23	24	24	24	24
COLLEGE OF EDUCATION	1,215	1,234	1,246	1,261	1,271	1,280	1,290	1,300
Lower Division	4	4	4	4	4	4	4	4
Upper Division	421	421	429	440	447	452	458	465
Graduate Level	727	732	736	740	743	747	751	754
Post Baccalaureate	63	77	77	77	77	77	77	77
COLLEGE OF ENGINEERING	716	729	737	746	757	770	782	797
Lower Division	223	230	229	230	236	243	249	256
Upper Division	355	360	368	376	380	385	391	398
Graduate Level	138	139	140	140	141	142	142	143
COLLEGE OF TROP AG & HUM RES	579	587	595	604	611	620	629	639
Lower Division	91	94	94	94	96	100	102	105
Upper Division	341	345	352	360	365	369	375	381
Graduate Level	147	148	149	150	150	151	152	153
SCHOOL OF MEDICINE	493	491	492	495	497	498	500	502
Lower Division	1	1	1	1	1	1	1	1
Upper Division	51	52	52	54	55	55	56	57
Graduate Level	197	198	199	200	201	202	203	204
1st Professional (MD)	244	240	240	240	240	240	240	240
SCHOOL OF NURSING	363	366	371	377	383	386	393	397
Lower Division	13	13	13	13	13	14	15	15
Upper Division	267	269	274	280	285	287	292	296
Graduate Level	83	84	84	84	85	85	86	86
SCHOOL OF SOCIAL WORK	242	243	246	248	250	251	253	254
Upper Division	39	39	40	41	42	42	43	43
Graduate Level	203	204	206	207	208	209	210	211
SCHOOL OF LAW	242	242	242	242	242	242	242	242
1st Professional	230	230	230	230	230	230	230	230
1st Professional (Pre-Law, Uncls)	12	12	12	12	12	12	12	12

1/ Includes Unclassified Undergraduates and No Data on education level.

2/ Includes Unclassified Graduates.

TABLE 4
 STUDENT SEMESTER HOURS OFFERED, BY COLLEGE
 MIDDLE PROJECTION SERIES
 UNIVERSITY OF HAWAI'I AT MANOA
 FALL 2001 TO FALL 2008

COLLEGE	ACTUAL 2001	PROJECTED						
		2002	2003	2004	2005	2006	2007	2008
TOTAL	197,971	201,455	203,962	206,157	208,798	212,190	215,615	219,270
Lower Division	93,762	96,208	97,117	97,874	99,574	101,953	104,087	106,364
Upper Division	68,368	69,250	70,690	71,979	72,775	73,638	74,780	76,005
Graduate Level	35,841	35,997	36,155	36,304	36,449	36,599	36,748	36,901
COLLEGE OF ARTS & SCIENCES 1/	121,589	124,217	125,716	126,996	128,831	131,328	133,741	136,316
Lower Division	76,432	78,465	79,160	79,753	81,155	83,127	84,875	86,747
Upper Division	35,529	36,057	36,814	37,444	37,830	38,304	38,915	39,573
Graduate Level	9,628	9,695	9,742	9,799	9,846	9,897	9,951	9,996
Arts & Humanities	30,680	31,362	31,722	32,025	32,515	33,164	33,805	34,448
Lower Division	19,988	20,522	20,690	20,833	21,212	21,728	22,199	22,676
Upper Division	9,042	9,180	9,361	9,509	9,615	9,738	9,898	10,056
Graduate Level	1,650	1,660	1,671	1,683	1,688	1,698	1,708	1,716
Languages, Ling & Lit	29,289	29,909	30,279	30,599	31,033	31,621	32,206	32,804
Lower Division	19,217	19,702	19,911	20,081	20,412	20,875	21,305	21,754
Upper Division	8,192	8,312	8,469	8,609	8,702	8,817	8,962	9,102
Graduate Level	1,880	1,895	1,899	1,909	1,919	1,929	1,939	1,948
Natural Sciences	29,007	29,665	29,994	30,277	30,728	31,372	31,938	32,617
Lower Division	21,925	22,512	22,710	22,884	23,284	23,861	24,348	24,913
Upper Division	4,858	4,915	5,033	5,130	5,172	5,228	5,295	5,399
Graduate Level	2,224	2,238	2,251	2,263	2,272	2,283	2,295	2,305
Social Sciences 1/	31,692	32,341	32,775	33,139	33,581	34,175	34,779	35,411
Lower Division	14,776	15,186	15,307	15,413	15,691	16,088	16,435	16,799
Upper Division	13,147	13,358	13,652	13,890	14,031	14,208	14,443	14,693
Graduate Level	3,769	3,797	3,816	3,836	3,859	3,879	3,901	3,919
Other Arts & Sciences	921	940	946	956	974	996	1,013	1,036
Lower Division	526	543	542	542	556	575	588	605
Upper Division	290	292	299	306	310	313	317	323
Graduate Level	105	105	105	108	108	108	108	108
SCH OF HAWN, ASIAN & PAC ST	2,326	2,371	2,403	2,427	2,458	2,495	2,543	2,582
Lower Division	1,200	1,229	1,242	1,252	1,273	1,298	1,326	1,350
Upper Division	847	860	879	890	900	911	929	944
Graduate Level	279	282	282	285	285	286	288	288
SCH OF OCEAN & EARTH SCI TECH	5,029	5,127	5,174	5,209	5,277	5,368	5,458	5,549
Lower Division	2,980	3,058	3,081	3,097	3,150	3,226	3,296	3,365
Upper Division	929	942	960	972	981	996	1,009	1,024
Graduate Level	1,120	1,127	1,133	1,140	1,146	1,146	1,153	1,160
SCHOOL OF ARCHITECTURE	2,043	2,100	2,175	2,226	2,305	2,376	2,447	2,515
Lower Division	977	993	1,014	1,017	1,049	1,070	1,096	1,122
Upper Division	713	729	755	776	797	819	839	855
Graduate Level	353	378	406	433	459	487	512	538

TABLE 4 (cont.)

COLLEGE	ACTUAL 2001	PROJECTED						
		2002	2003	2004	2005	2006	2007	2008
COLLEGE OF BUSINESS ADMIN	14,872	15,045	15,307	15,523	15,689	15,861	16,062	16,321
Lower Division	2,338	2,398	2,437	2,466	2,498	2,551	2,603	2,660
Upper Division	9,119	9,204	9,412	9,591	9,708	9,807	9,949	10,122
Graduate Level	3,415	3,443	3,458	3,466	3,483	3,503	3,510	3,539
SCH OF TRAVEL INDUSTRY MGT	2,621	2,666	2,725	2,774	2,800	2,846	2,888	2,945
Lower Division	744	759	772	783	794	809	824	841
Upper Division	1,750	1,780	1,826	1,864	1,875	1,905	1,932	1,972
Graduate Level	127	127	127	127	131	132	132	132
COLLEGE OF EDUCATION	14,673	14,861	15,048	15,251	15,382	15,523	15,689	15,858
Lower Division	1,716	1,748	1,773	1,796	1,818	1,850	1,880	1,912
Upper Division	7,965	8,026	8,168	8,325	8,419	8,507	8,621	8,739
Graduate Level	4,992	5,087	5,107	5,130	5,145	5,166	5,188	5,207
COLLEGE OF ENGINEERING	4,653	4,719	4,795	4,875	4,929	4,995	5,064	5,150
Lower Division	1,181	1,205	1,217	1,237	1,256	1,279	1,303	1,332
Upper Division	2,784	2,822	2,880	2,940	2,970	3,008	3,052	3,105
Graduate Level	688	692	698	698	703	708	709	713
COLLEGE OF TROP AG & HUM RES	9,316	9,503	9,641	9,759	9,890	10,072	10,251	10,444
Lower Division	4,639	4,764	4,810	4,845	4,930	5,055	5,162	5,278
Upper Division	4,016	4,074	4,161	4,240	4,286	4,338	4,406	4,479
Graduate Level	661	665	670	674	674	679	683	687
SCHOOL OF MEDICINE	11,119	11,077	11,125	11,178	11,220	11,268	11,329	11,394
Lower Division	1,271	1,303	1,320	1,332	1,351	1,382	1,410	1,442
Upper Division	1,606	1,625	1,646	1,677	1,690	1,699	1,722	1,747
Graduate Level	8,242	8,149	8,159	8,169	8,179	8,187	8,197	8,205
SCHOOL OF NURSING	3,419	3,446	3,500	3,565	3,623	3,651	3,715	3,756
Lower Division	200	201	205	209	212	216	220	222
Upper Division	2,755	2,776	2,826	2,887	2,937	2,961	3,015	3,054
Graduate Level	464	469	469	469	474	474	480	480
SCHOOL OF SOCIAL WORK	2,633	2,645	2,675	2,696	2,716	2,729	2,750	2,761
Lower Division	84	85	86	87	88	90	92	93
Upper Division	355	355	363	373	382	383	391	391
Graduate Level	2,194	2,205	2,226	2,236	2,246	2,256	2,267	2,277
SCHOOL OF LAW	3,678	3,678	3,678	3,678	3,678	3,678	3,678	3,679
Graduate Level	3,678	3,678	3,678	3,678	3,678	3,678	3,678	3,679

1/ Military Studies is included with Social Sciences, College of Arts & Sciences.

TABLE 5
 FULL-TIME EQUIVALENT COURSE ENROLLMENT SERVED, BY COLLEGE
 MIDDLE PROJECTION SERIES
 UNIVERSITY OF HAWAI'I AT MANOA
 FALL 2001 TO FALL 2008

COLLEGE	ACTUAL 2001	PROJECTED						
		2002	2003	2004	2005	2006	2007	2008
TOTAL	13,800	14,034	14,201	14,350	14,530	14,760	14,987	15,234
Lower Division	6,252	6,414	6,473	6,525	6,639	6,797	6,939	7,090
Upper Division	4,554	4,618	4,713	4,798	4,851	4,910	4,985	5,068
Graduate Level	2,994	3,002	3,015	3,027	3,040	3,053	3,063	3,076
COLLEGE OF ARTS & SCIENCES 1/	8,268	8,442	8,543	8,631	8,753	8,922	9,081	9,255
Lower Division	5,097	5,230	5,276	5,318	5,410	5,543	5,658	5,783
Upper Division	2,365	2,404	2,455	2,496	2,522	2,554	2,594	2,639
Graduate Level	806	808	812	817	821	825	829	833
Arts & Humanities	2,076	2,118	2,142	2,163	2,196	2,240	2,282	2,325
Lower Division	1,334	1,368	1,379	1,389	1,414	1,449	1,480	1,512
Upper Division	603	612	624	634	641	649	660	670
Graduate Level	139	138	139	140	141	142	142	143
Languages, Ling & Lit	1,984	2,025	2,050	2,072	2,101	2,141	2,179	2,219
Lower Division	1,281	1,313	1,327	1,339	1,361	1,392	1,420	1,450
Upper Division	545	554	565	574	580	588	597	607
Graduate Level	158	158	158	159	160	161	162	162
Natural Sciences	1,968	2,016	2,038	2,057	2,086	2,130	2,167	2,213
Lower Division	1,460	1,501	1,514	1,526	1,552	1,591	1,623	1,661
Upper Division	323	328	336	342	345	349	353	360
Graduate Level	185	187	188	189	189	190	191	192
Social Sciences 1/	2,176	2,219	2,248	2,274	2,303	2,343	2,384	2,427
Lower Division	987	1,012	1,020	1,028	1,046	1,073	1,096	1,120
Upper Division	874	891	910	926	935	947	963	980
Graduate Level	315	316	318	320	322	323	325	327
Other Arts & Sciences	64	64	65	65	67	68	69	71
Lower Division	35	36	36	36	37	38	39	40
Upper Division	20	19	20	20	21	21	21	22
Graduate Level	9	9	9	9	9	9	9	9
SCH OF HAWN, ASIAN & PAC ST	159	163	166	166	169	172	174	177
Lower Division	80	82	83	83	85	87	88	90
Upper Division	56	57	59	59	60	61	62	63
Graduate Level	23	24	24	24	24	24	24	24
SCH OF OCEAN & EARTH SCI TECH	354	361	363	366	371	377	383	389
Lower Division	198	204	205	206	210	215	220	224
Upper Division	62	63	64	65	65	66	67	68
Graduate Level	94	94	94	95	96	96	96	97
SCHOOL OF ARCHITECTURE	142	147	152	156	161	167	172	177
Lower Division	65	66	68	68	70	71	73	75
Upper Division	48	49	50	52	53	55	56	57
Graduate Level	29	32	34	36	38	41	43	45

TABLE 5 (cont.)

COLLEGE	ACTUAL 2001	PROJECTED						
		2002	2003	2004	2005	2006	2007	2008
COLLEGE OF BUSINESS ADMIN	1,048	1,061	1,077	1,092	1,104	1,116	1,130	1,147
Lower Division	155	160	162	164	167	170	174	177
Upper Division	608	614	627	639	647	654	663	675
Graduate Level	285	287	288	289	290	292	293	295
SCH OF TRAVEL INDUSTRY MGT	178	181	184	187	189	192	195	198
Lower Division	50	51	51	52	53	54	55	56
Upper Division	117	119	122	124	125	127	129	131
Graduate Level	11	11	11	11	11	11	11	11
COLLEGE OF EDUCATION	1,061	1,076	1,089	1,103	1,111	1,121	1,132	1,144
Lower Division	115	117	118	120	121	123	125	127
Upper Division	530	535	545	555	561	567	575	583
Graduate Level	416	424	426	428	429	431	432	434
COLLEGE OF ENGINEERING	322	326	331	336	341	345	349	355
Lower Division	79	80	81	82	84	85	87	89
Upper Division	186	188	192	196	198	201	203	207
Graduate Level	57	58	58	58	59	59	59	59
COLLEGE OF TROP AG & HUM RES	633	645	654	662	671	683	695	708
Lower Division	309	318	321	323	329	337	344	352
Upper Division	268	272	277	283	286	289	294	299
Graduate Level	56	55	56	56	56	57	57	57
SCHOOL OF MEDICINE	879	874	878	882	885	887	892	896
Lower Division	85	87	88	89	90	92	94	96
Upper Division	106	108	110	112	113	113	115	116
Graduate Level	688	679	680	681	682	682	683	684
SCHOOL OF NURSING	236	237	241	245	250	251	256	259
Lower Division	13	13	14	14	14	14	15	15
Upper Division	184	185	188	192	196	197	201	204
Graduate Level	39	39	39	39	40	40	40	40
SCHOOL OF SOCIAL WORK	213	214	216	217	218	220	221	222
Lower Division	6	6	6	6	6	6	6	6
Upper Division	24	24	24	25	25	26	26	26
Graduate Level	183	184	186	186	187	188	189	190
SCHOOL OF LAW	307	307	307	307	307	307	307	307
Graduate Level	307	307	307	307	307	307	307	307

1/ Military Studies is included with Social Sciences, College of Arts & Sciences.

TABLE 6
HEADCOUNT ENROLLMENT OF CREDIT STUDENTS, BY ATTENDANCE STATUS
MIDDLE PROJECTION SERIES
UNIVERSITY OF HAWAI'I AT MANOA
FALL 2001 TO FALL 2008

ATTENDANCE STATUS	ACTUAL	PROJECTED						
	2001	2002	2003	2004	2005	2006	2007	2008
TOTAL	17,532	17,828	18,038	18,223	18,433	18,701	18,975	19,267
Full-time.....	12,624	12,714	12,863	12,995	13,145	13,337	13,532	13,740
Lower Division	4,371	4,382	4,434	4,479	4,531	4,597	4,664	4,736
Upper Division	5,588	5,679	5,745	5,804	5,871	5,957	6,044	6,137
Graduate Level	2,665	2,653	2,684	2,712	2,743	2,783	2,824	2,867
Part-time	4,908	5,114	5,175	5,228	5,288	5,364	5,443	5,527
Lower Division 1/	495	474	481	486	491	498	505	513
Upper Division	1,600	1,646	1,665	1,682	1,702	1,726	1,752	1,779
Graduate Level	2,813	2,994	3,029	3,060	3,095	3,140	3,186	3,235

1/ Includes No Data on education level.

Lower Division = Freshmen, Sophomores & Unclassified Undergraduate students.

Upper Division = Juniors & Seniors

**APPENDIX A
HAWAI'I PUBLIC HIGH SCHOOL SENIORS, BY SCHOOL DISTRICT
1994-95 TO 2007-08**

SCHOOL DISTRICT	ACTUAL 1/								PROJECTED 2/					
	1994-95	1995-96	1996-97	1997-98	1998-99	1999-00	2000-01	2001-02	2002-03	2003-04	2004-05	2005-06	2006-07	2007-08
TOTAL	9,753	9,671	9,033	9,459	9,523	9,698	9,232	9,457	8,799	8,958	9,290	9,450	9,720	10,357
O'ahu Districts	6,442	6,285	5,899	6,130	6,117	6,247	5,860	6,064	5,472	5,560	5,824	5,932	6,115	6,469
Honolulu District	1,927	1,858	1,774	1,779	1,793	1,917	1,743	1,843	1,626	1,692	1,700	1,764	1,801	1,891
Central District	1,945	1,933	1,742	1,819	1,744	1,715	1,596	1,714	1,528	1,522	1,600	1,590	1,640	1,587
Leeward District	1,505	1,464	1,372	1,516	1,580	1,552	1,502	1,519	1,402	1,431	1,604	1,604	1,721	1,953
Windward District	1,065	1,030	1,011	1,016	1,000	1,063	1,019	988	916	915	920	974	953	1,038
Neighbor Island District:	3,311	3,386	3,134	3,329	3,406	3,451	3,372	3,393	3,327	3,398	3,466	3,518	3,605	3,888
Hawai'i District	1,568	1,531	1,487	1,564	1,570	1,653	1,589	1,598	1,576	1,546	1,538	1,563	1,603	1,762
Maui District	1,089	1,127	1,004	1,105	1,168	1,185	1,186	1,184	1,177	1,197	1,267	1,235	1,301	1,388
Kaua'i District	654	728	643	660	668	613	597	611	574	655	661	720	701	738

1/ Department of Education for the State of Hawai'i.

2/ Department of Education, "Statewide Enrollment Projections, 2000-01 to 2005-06", January 2000.

Note: Data for 2006-07 & 2007-08 have been extrapolated from DOE forecast for sophomores and juniors.

APPENDIX B
HAWAI'I HIGH SCHOOL GRADUATES
WICHE ACTUAL AND PROJECTED - 1998 SERIES

Year	Total	% Chge	Public	% Chge	Private	% Chge
1986	12,468		9,958		2,510	
1987	13,102	5.1	10,491	5.4	2,611	4.0
1988	13,400	2.3	10,751	2.5	2,649	1.5
1989	13,059	-2.5	10,551	-1.9	2,508	-5.3
1990	11,908	-8.8	9,526	-9.7	2,382	-5.0
1991	11,896	-0.1	9,519	-0.1	2,377	-0.2
1992	11,970	0.6	9,610	1.0	2,360	-0.7
1993	11,585	-3.2	9,284	-3.4	2,301	-2.5
1994	12,337	6.5	9,900	6.6	2,437	5.9
1995	12,359	0.2	9,972	0.7	2,387	-2.1
1996	12,441	0.7	9,992	0.2	2,449	2.6
1997	12,125	-2.5	9,562	-4.3	2,563	4.7
1998	13,312	9.8	10,758	12.5	2,554	-0.4
1999	14,063	5.6	11,399	6.0	2,664	4.3
2000	13,922	-1.0	11,230	-1.5	2,692	1.1
2001	14,043	0.9	11,386	1.4	2,657	-1.3
2002	13,931	-0.8	11,424	0.3	2,507	-5.6
2003	13,651	-2.0	11,214	-1.8	2,437	-2.8
2004	13,835	1.3	11,524	2.8	2,311	-5.2
2005	13,958	0.9	11,647	1.1	2,311	0.0
2006	14,343	2.8	12,004	3.1	2,339	1.2
2007	14,799	3.2	12,355	2.9	2,444	4.5
2008	15,564	5.2	12,979	5.1	2,585	5.8
2009	15,134	-2.8	12,620	-2.8	2,514	-2.7
2010	15,091	-0.3	12,584	-0.3	2,507	-0.3
2011	14,883	-1.4	12,411	-1.4	2,472	-1.4
2012	14,826	-0.4	12,363	-0.4	2,463	-0.4

Note: Horizontal line delimits WICHE actual from projected numbers.

Note: WICHE "Actual" data may differ from UH IRO compiled data shown in the MAPS reports on the High School Background of First-Time Students.

Source: Western Interstate Commission for Higher Education, February 1998.