

ENROLLMENT PROJECTIONS
UNIVERSITY OF HAWAI'I AT MĀNOA
FALL 2003 TO FALL 2009

Institutional Research Office

University of Hawai'i

July 2003

File Reference: Management and Planning Support Folder, Projections

Reports available online at: <http://www.hawaii.edu/iro/maps.htm>

ENROLLMENT PROJECTIONS UNIVERSITY OF HAWAI'I AT MĀNOA FALL 2003 TO FALL 2009

INTRODUCTION

This report presents information on historical and projected headcount enrollment at the University of Hawai'i at Mānoa. The projections are statistical extrapolations of current trends in enrollment. They do not set enrollment targets and, in general, do not take into consideration planned or potential changes in University policies or procedures. They should be considered as an extension into the future of current enrollment trends, and may be used as a foundation for further work in planning and budgeting.

The enrollment projections are based upon unduplicated headcounts of students enrolled in credit courses. Included are students enrolled in regular day courses, as well as students enrolled in continuing education credit courses offered by Outreach College. Special students (auditors, concurrent students, and early admits) are also included for all years, both historical and projected.

Historical data are included in the figures and tables to facilitate comparison and analysis. They were extracted from student enrollment, academic crossover and course registration data files. Information on Hawai'i public high school seniors by school district was provided by the Department of Education for the State of Hawai'i. Information on Hawai'i public and private high school graduates were obtained from the Western Interstate Commission for Higher Education (WICHE).

METHODOLOGY

The projections are broken down into three broad groups of students: classified undergraduate, classified graduate and unclassified. Classified undergraduate enrollment is further sub-divided by registration status: first-time, continuing / returning and transfer. Within each registration status category, counts are shown by education level. Classified graduate enrollment is sub-divided by degree objective. Unclassified enrollment is sub-divided by undergraduate and graduate. The Fall 2003 projection report offers three projection series - high, middle and low. The values in the separate series were produced by varying the input values used in the model from among the range of available values. Otherwise, the model uses the same general methodology for all three series.

First-time freshmen are divided into categories based upon sector and geographic location of the high school attended. Each category is forecast separately: direct entrants from Hawai'i public high schools, direct entrants from Hawai'i private high schools, freshmen from the U.S. mainland, freshmen from foreign countries (including current and former U.S. trust territories) and other first-time freshmen. Direct entrants are students from Hawai'i high schools who entered UH Mānoa in the fall semester immediately following graduation from high school. This group represents the traditional cohort of first-time freshmen.

The enrollment projections of **direct public entrants** are based upon the forecast of public high school seniors provided by the Hawai'i Department of Education (see Appendix A). Historical ratios of direct public entrants to public high school senior enrollment are calculated by school district. Enrollment for each year is projected by applying averages of these ratios (by district) to the annual DOE senior enrollment forecast (ending in June of each year). The DOE forecast used in these projections was released in April, 2003.

The projection of **direct private entrants** relies upon the private high school graduate forecast for Hawai'i published by the Western Interstate Commission for Higher Education (WICHE), released in February 1998 (see Appendix B). Historical ratios of direct private entrants to total Hawai'i private high school graduates are first calculated. An average ratio is then applied to the WICHE annual private high school graduate forecast to yield the projected number of first-time freshmen from Hawai'i private high schools.

First-time freshmen from the **U.S. mainland** are forecast using annual growth rates. The growth rates are estimates, based upon the historical rates of growth realized since Fall 1996. Starting with the Fall 2002 number as the base level, first-time freshmen from the U.S. mainland are forecast to grow by 15%, 7.5% or 0% for the three series (high to low, respectively) through 2006. For the last three projected years, the growth rates are reduced to 5.0% and 2.5% per year for the high and middle series, respectively. These assumed rates of growth are conservative, in that the annual growth rate has averaged 48% over the last four years. First-Time freshmen from **foreign countries** are forecast similarly, except that the growth rates used are 10% and 5% for the high series, 5% and 2.5% for the middle series, and zero growth for the low series. First-time freshmen from foreign countries have grown at an average annual rate of 25% over the last four years.

Other first-time freshmen includes those who completed high school via the General Education Development (GED) examination and those who graduated from Hawai'i high schools prior to the 2001-02 academic year. The numbers are both small in absolute terms and relatively stable in number. They are therefore set to constants.

Classified undergraduate transfer enrollment is divided into four areas based upon the geographic location of the previous college attended. Each category is forecast separately: other campuses in the University of Hawai'i system, Hawai'i private colleges, U.S. mainland institutions, and foreign countries (including current and former U.S. territorial possessions). Transfers from other UH institutions, Hawai'i private colleges and foreign countries show no distinct trends and are set to constants for all three projection series.

Transfers from the U.S. mainland have grown substantially in recent years: from 304 in Fall 1996 to 699 in Fall 2002, an increase of 130%. They are forecast using least-squares trend lines calculated from historical data. The high series is forecast using the trend as measured from Fall 1996 to Fall 2002; the middle and low series are forecast using the trend as measured from Fall 1994 to Fall 2002. For all three series, the transfer enrollment level is held constant for Fall 2007 to Fall 2009. The breakdown by educational level for all three series is based upon the two-year average distribution across education levels.

Classified undergraduate continuing / returning enrollment is forecast using continuation rates. In general, a continuation rate is the ratio of continuing / returning enrollment at a given education level to the previous fall semester's total enrollment at the next lower level. For example, the sophomore continuation rate is the ratio of continuing / returning sophomores to the previous year's total freshmen enrollment count. In this report, freshmen are projected using the previous year's total first-time freshmen, sophomores using the previous year's total freshmen, juniors using the previous year's total sophomores, and seniors using the sum of the previous year's total juniors and seniors. Average continuation rates are applied to the actual or projected total enrollment by education level to forecast the following year's continuing / returning enrollment at the next higher level.

Classified graduate enrollment is sub-divided by education level, with each category forecast separately: master, doctorate, first-professional, post baccalaureate and graduate special. First-professional (including MD and JD candidates), post baccalaureate and graduate special enrollments are set to constants. Master and doctorate enrollment, as well as ArchD first-professional enrollment in the School of Architecture, are forecast using annual growth rates. The growth rates are estimates, based upon information from campus administrators. Starting with the Fall 2002 numbers as the base level, enrollments of master and doctoral students are forecast to grow at 3%, 2% and 1% per year for the three series high to low, respectively. ArchD first-professional students are forecast to grow by 10%, 5% and 2.5% for the three series high to low, respectively.

Unclassified students are broken out by undergraduate / graduate. The inclusion of Outreach College data to the general enrollment count beginning in Fall 1999 resulted in large increases in unclassified students. Although the number has grown somewhat since then, no reliable method for forecasting unclassified enrollment has been identified. For simplicity, the unclassified enrollments have been set to constants for all three series.

In addition to the high, middle and low series enrollment projections given in Table 1, detailed tables are included which project headcount enrollment, student semester hours (SSH) offered, and full-time equivalent course enrollments. **The data in all subsequent tables are based upon the middle projection series presented in Table 1.**

Table 2 presents seven years of historical data with detailed forecasts by education level and registration status. Table 3 presents headcount enrollment by college, broken out by lower division, upper division and graduate level. Student semester hours offered are shown in Table 4 and full-time equivalent (FTE) course enrollments are given in Table 5. Tables 3, 4 and 5 utilize Fall 2002 historical data plus the projected enrollments for 2003 to 2009 as input, then provide enrollment forecasts by college using the Fall 2002 proportions to distribute enrollments across subunits. Headcount enrollment by attendance status is provided in Table 6. Two-year average proportions have been used to divide the projected headcounts between full-time and part-time. Appendix A shows historical and DOE projected enrollments of Hawai'i public high school seniors by geographic district through academic year 2008-09. Appendix B gives WICHE forecasts of Hawai'i public and private high school graduates through June 2012.

ANALYSIS AND HIGHLIGHTS

- Enrollment of both public and private high school seniors declined in academic year 2002-03 (see Appendices A & B). Consequently, even if the going rates of high school graduates into UH Mānoa remain unchanged, enrollment of first-time freshmen from Hawai'i public and private high schools should go lower in Fall 2003. This result is reflected in the projections (see Table 2). However, the Hawai'i Department of Education forecast for public high school seniors moves steadily higher beginning in academic year 2003-04, and the WICHE forecast for private high school graduates moves higher beginning in academic year 2005-06. Steady to slightly higher levels of first-time freshmen enrollment from Hawai'i high schools may be expected beginning in Fall 2004.
- First-time freshmen from the U.S. mainland have grown rapidly in recent years, from 87 in Fall 1998 to 398 in Fall 2002 (Table 2 & Figure 7). This increase may be attributed to active recruiting efforts. Continued growth in freshmen from the U.S. mainland is expected. However, at some point the increases will be moderated by resource constraints, especially lack of student housing. Also, as the number of non-resident students increases the total enrolled at the campus will approach the 30% limit currently imposed by University policy. First-time freshmen from the U.S. mainland are forecast to increase to about 573 students by Fall 2009.
- First-time freshmen from foreign countries (including U.S. possessions) have also grown rapidly in recent years, though to more modest levels. Further increases are anticipated, but may be moderated by visa restrictions and other security regulations adopted by the Federal government in the wake of the 9/11 tragedy.
- Classified undergraduate transfers from the U.S. mainland have also grown rapidly in recent years, from 304 in Fall 1996 to 699 in Fall 2002 (Table 2 & Figure 8). Additional, though more moderate, increases are anticipated. Transfers from other sources, including other UH campuses and Hawai'i private colleges, are expected to remain at or near current levels through the projection period.
- After declining from the mid to late 1990s, enrollments in Master and Doctorate programs grew by 6.2% in Fall 2002 (Table 2 & Figure 9). The demographics of the baby-boom echo should help to boost enrollment in graduate programs by 1% to 3% per year through the remainder of the decade.
- First-Professional enrollment is generally stable. The MD and JD programs have cohorts that are restricted in size. However, the ArchD program in the School of Architecture should increase in size as students pass portfolio review and are admitted to the first-professional program. The total enrollment of ArchD first-professionals grew by 6 students in both Fall 2001 and Fall 2002. Enrollment is forecast to increase by 5% (middle series) per year through Fall 2009. The high series allows for 10% growth through Fall 2009.

SUMMARY AND CONCLUSION

Headcount enrollment at the University of Hawai'i at Mānoa grew 6.7% in Fall 2002, to 18,706. Enrollment (middle series) is projected to increase 1.8% in Fall 2002 to 19,046, and to continue to grow at an average annual rate of 1.7% through Fall 2009. Despite the large enrollment increase in Fall 2002, a fairly conservative rate of growth seems warranted for a number of reasons, including the uncertain economy, security concerns in the aftermath of the events of 9/11 and resource constraints, especially student housing. The high series allows for more rapid growth, at an average annual rate of 2.9%, while the low series provides for very slight growth (Table 1).

Overall, the enrollment projection for UH Mānoa is for continued modest growth, with potential for somewhat higher increase.

First-time freshmen and classified undergraduate transfers from the U.S. mainland have provided the engine of growth in campus enrollment since Fall 1997. Additional increases are anticipated, though at declining rates. At some point, perhaps soon, resource constraints and policy issues will begin to limit further increases. For these reasons, the rates of growth used in the projections are conservative.

Although first-time freshmen from Hawai'i public and private high schools have shown no significant growth in recent years, that situation could change as the number of local high school graduates increase (as predicted by both the DOE and WICHE). Also, if the going rates of Hawai'i high school graduates continue to recover from the lows of the late 1990s, the numbers could move significantly higher.

The effects of the events of September 11th, 2001 do not seem to have adversely affected enrollment. The group of students most likely to be affected in the future are foreign students, for whom security clearance must be obtained as part of the visa procurement process.

The declines in PhD and Masters level programs at UH Mānoa which had persisted since Fall 1994 seem to have ended. After slight increases in Fall 2001, Master and PhD enrollment grew 6.2% in Fall 2002. Due to the baby-boomer echo, demographics alone may help to boost classified graduate enrollment 1% to 3% per year though the remainder of the decade.

University of Hawai'i at Mānoa
Enrollment Projections

Figure 1
Historical and Projected Headcount Enrollment

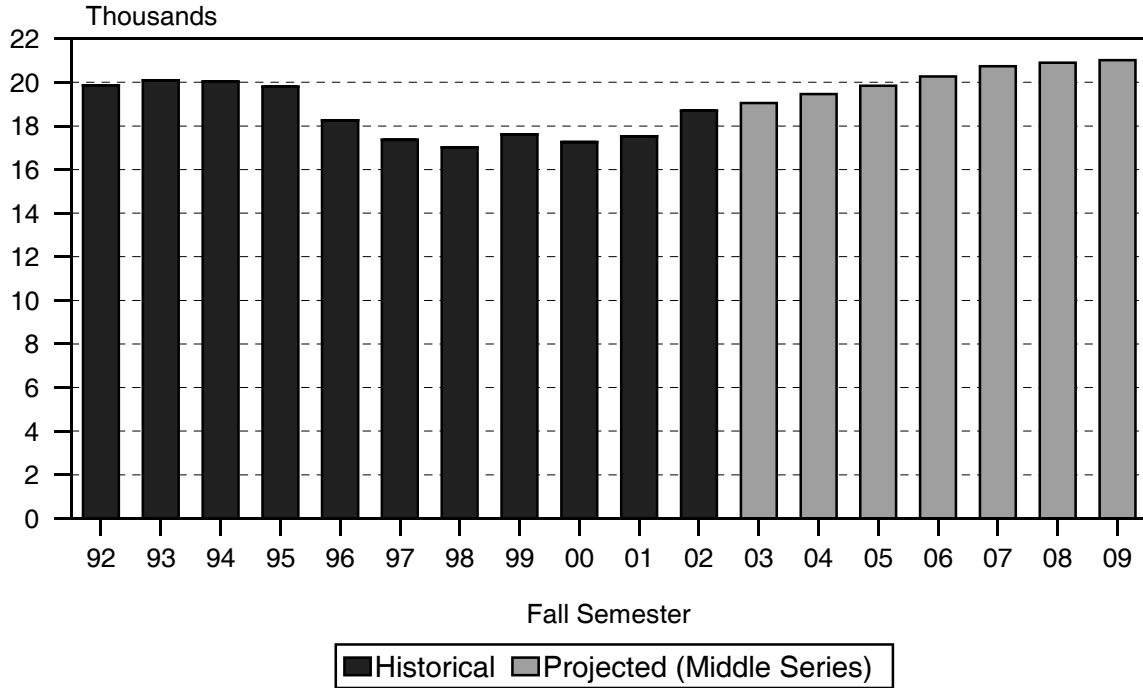
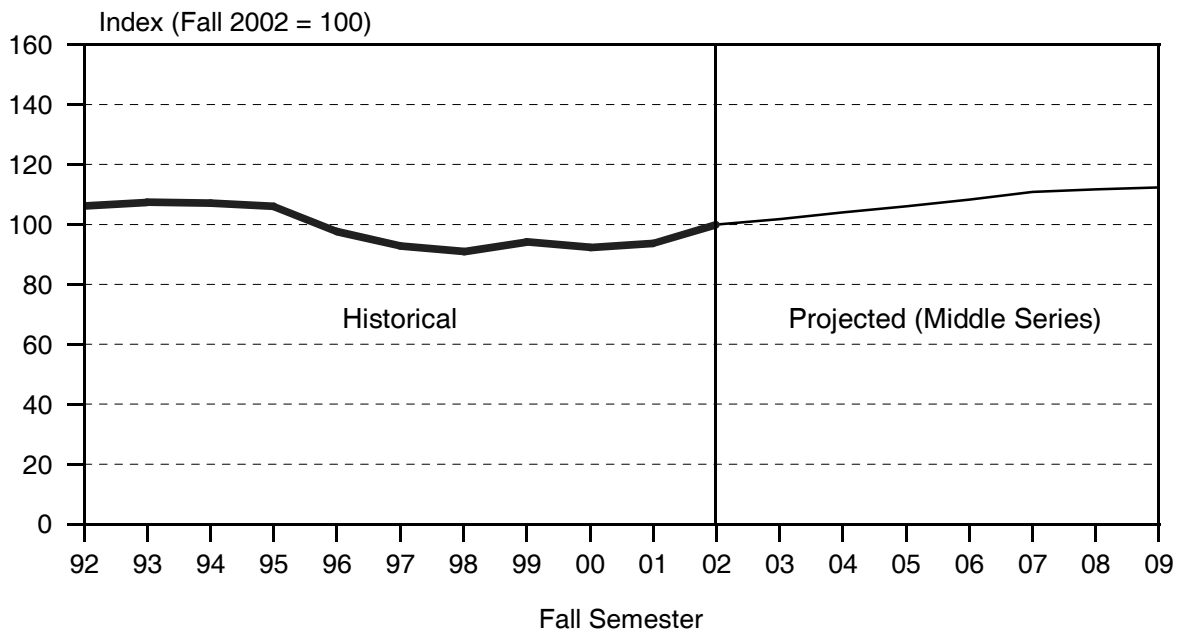


Figure 2
UH Mānoa Headcount Enrollment - 10 Year



University of Hawai'i at Mānoa
Enrollment Projections

Figure 3
High, Middle and Low Projection Series

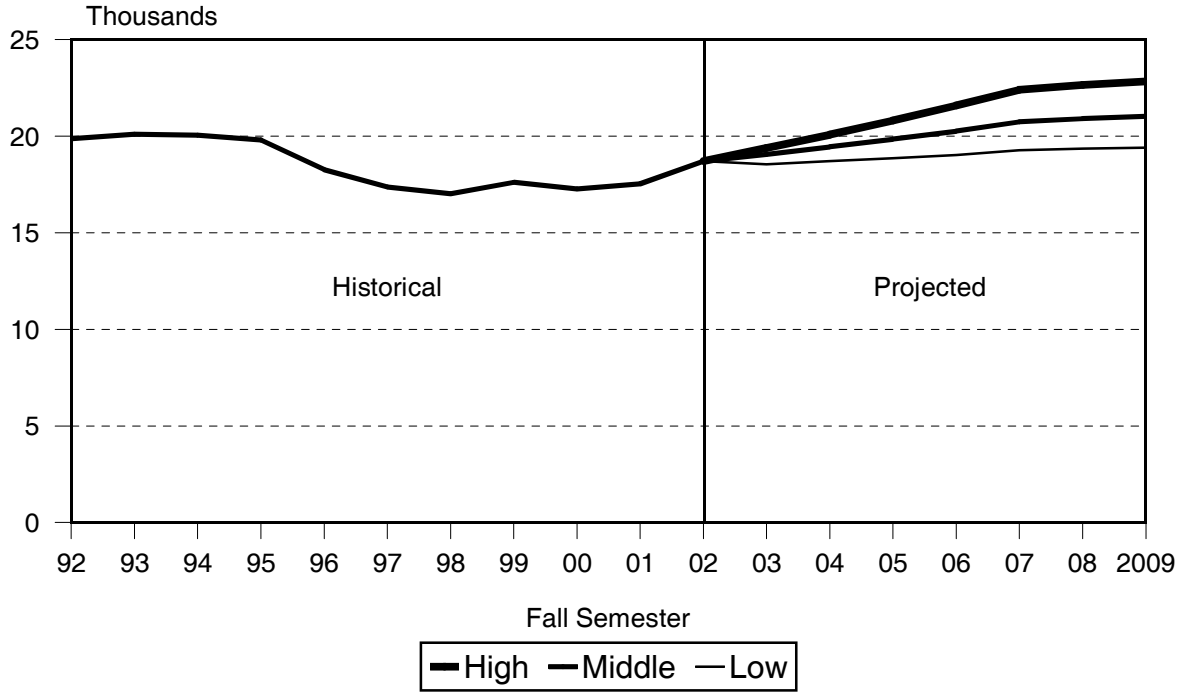
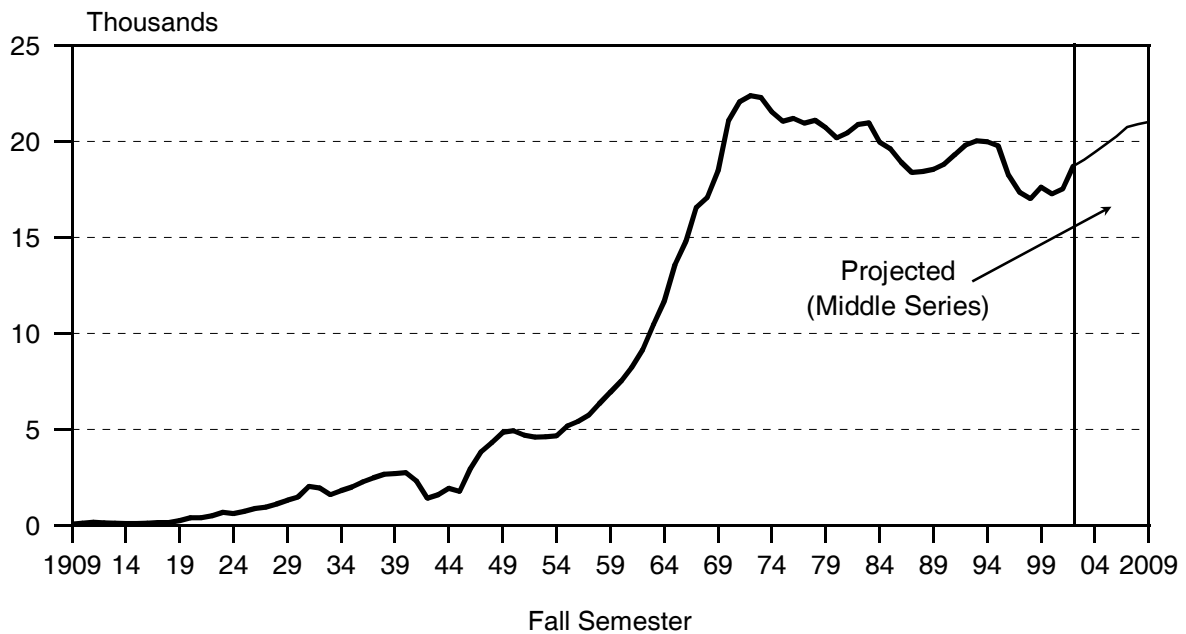
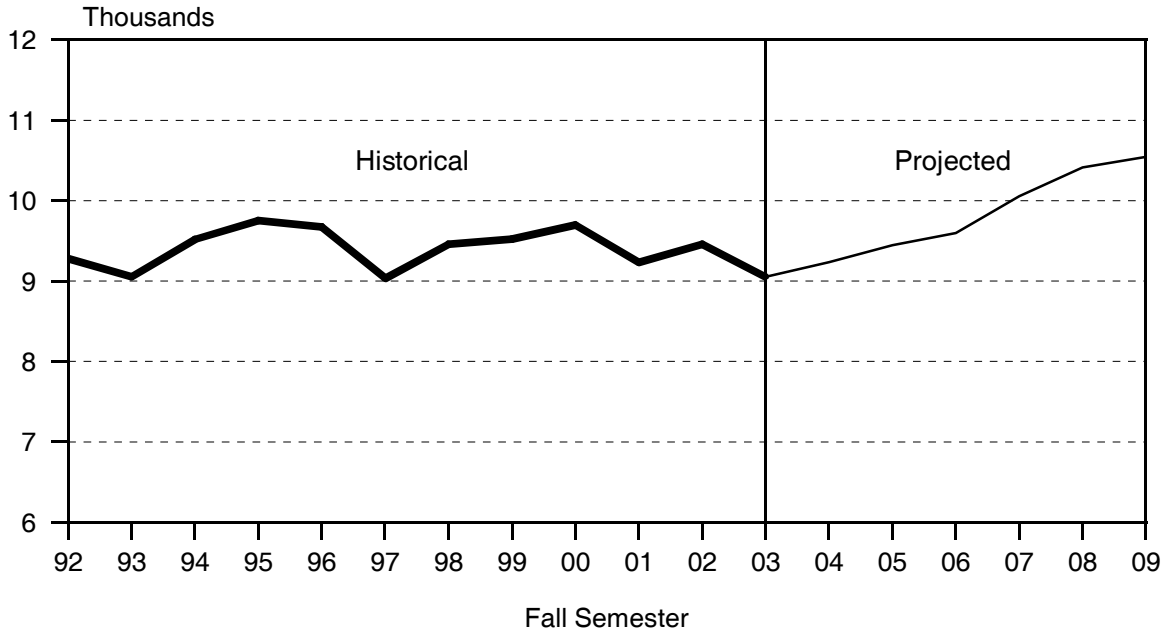


Figure 4
UH Mānoa Headcount Enrollment - Historical



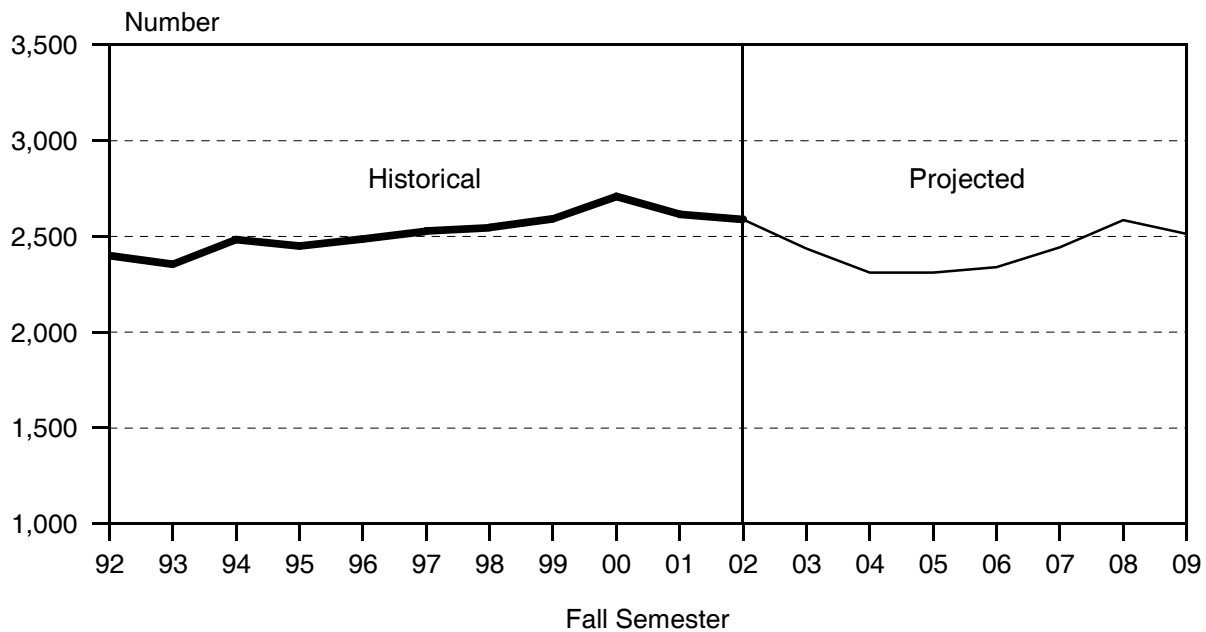
University of Hawai'i at Mānoa
Enrollment Projections

Figure 5
Hawai'i Public High School Seniors



Source: Department of Education, State of Hawai'i; April 2003.

Figure 6
Hawai'i Private High School Graduates



Sources: Historical data from UH IRO; Projected data from WICHE.

University of Hawai'i at Mānoa
Enrollment Projections

Figure 7
First-Time Freshmen by Geographic Origin

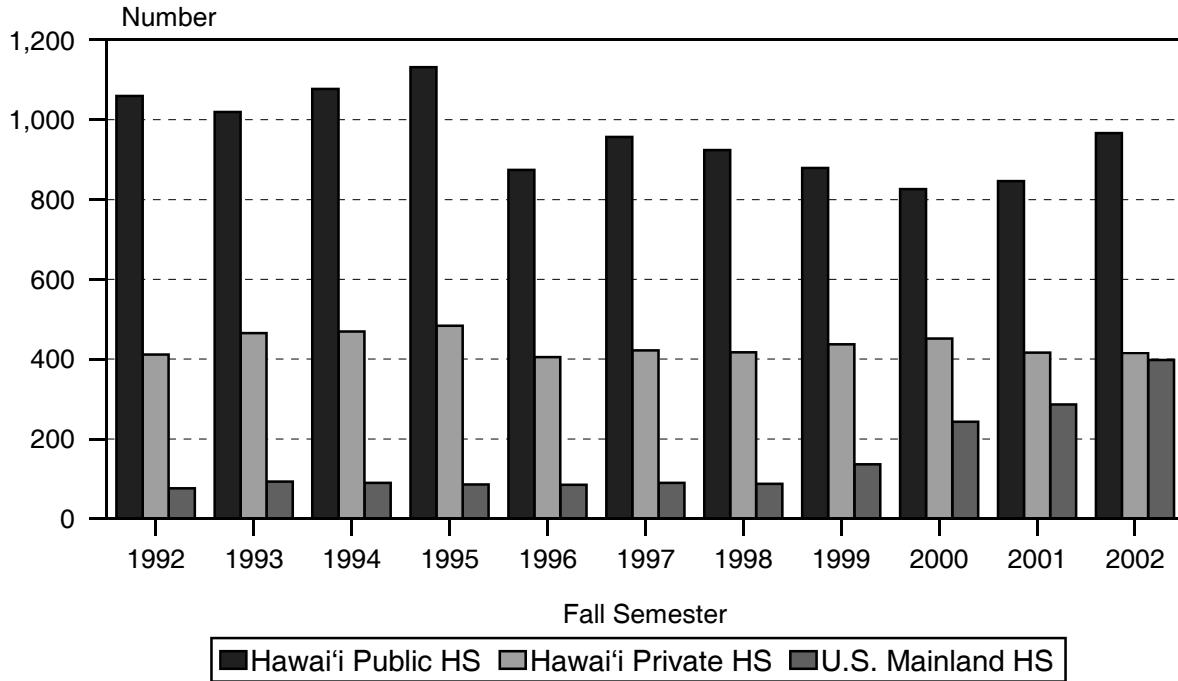
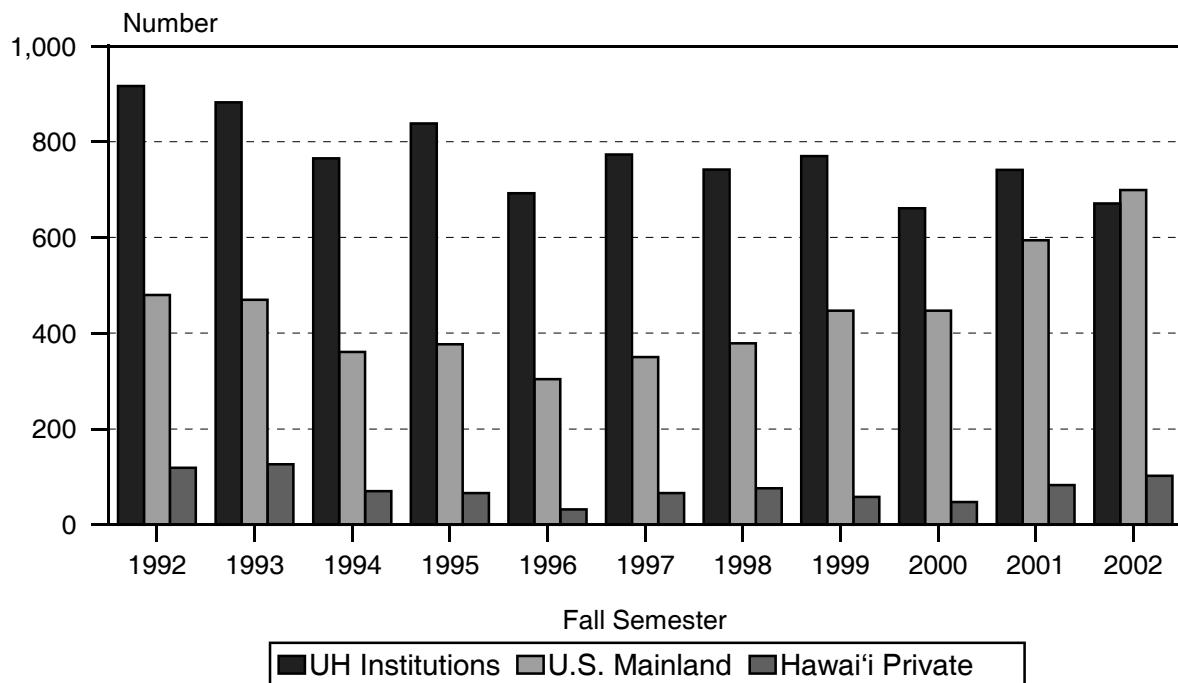


Figure 8
Undergraduate Transfers by Geographic Origin



University of Hawai'i at Mānoa
Enrollment Projections

Figure 9
Classified Graduate Students

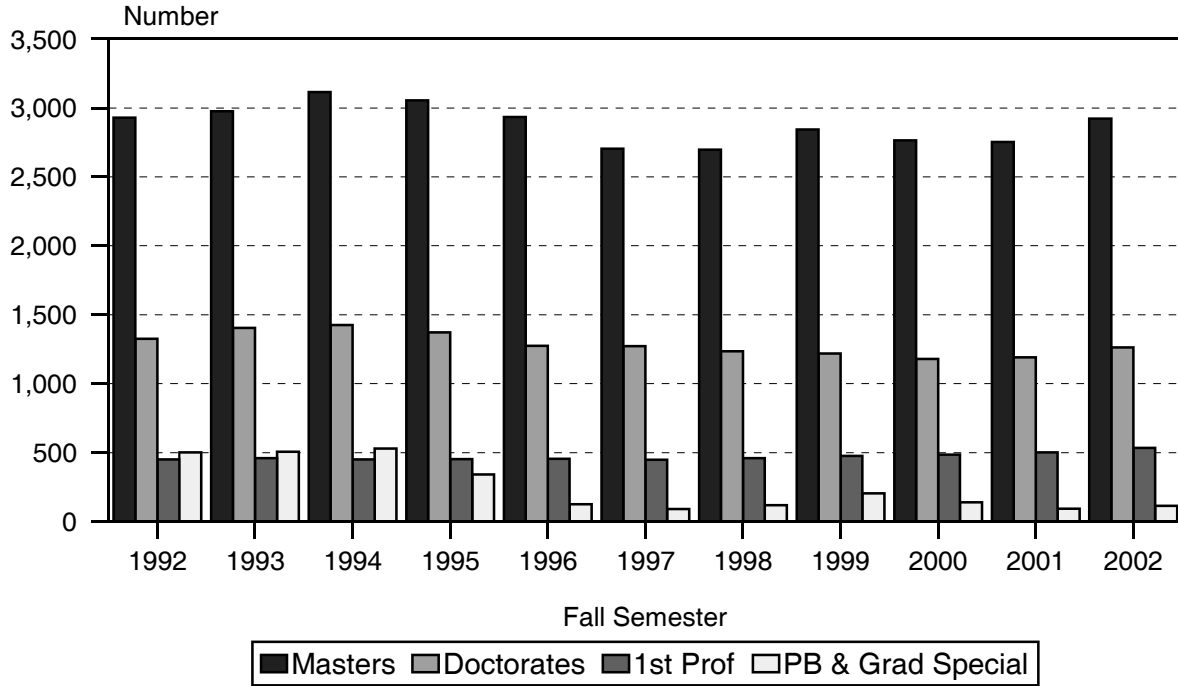
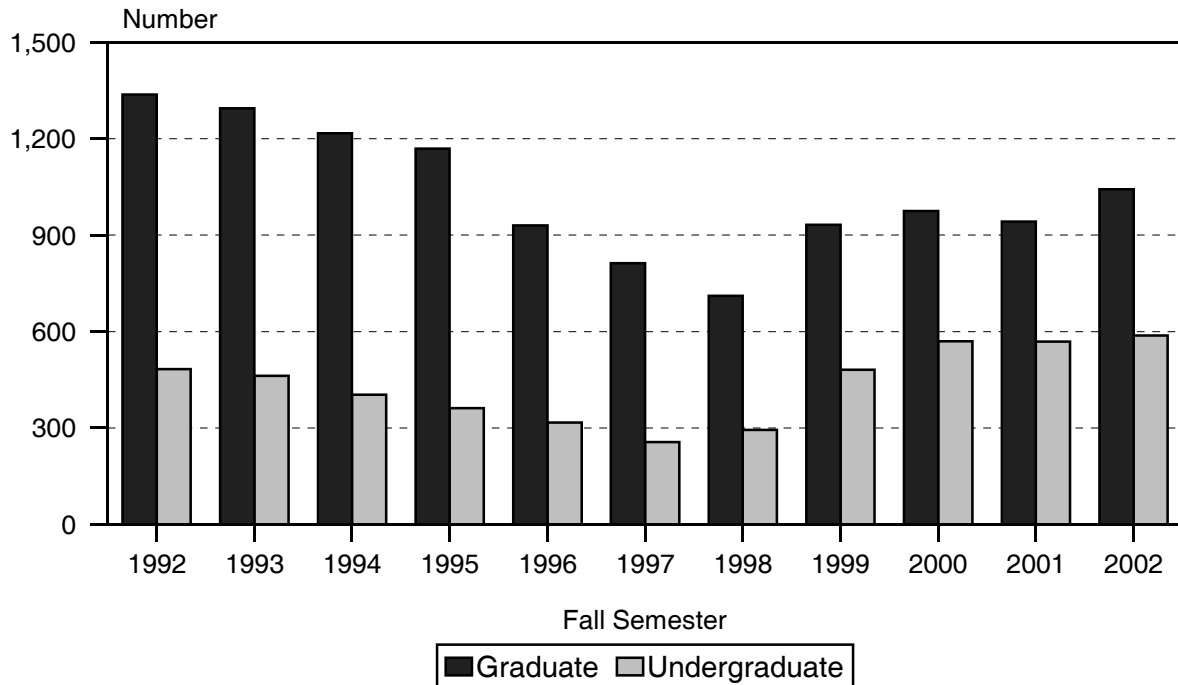


Figure 10
Unclassified Students



Outreach College was added to the to the general enrollment count in Fall 1999.

TABLE 1
HEADCOUNT ENROLLMENT OF CREDIT STUDENTS
LOW, MIDDLE AND HIGH PROJECTION SERIES
UNIVERSITY OF HAWAI'I AT MANOA
FALL 2002 TO FALL 2009

PROJECTION SERIES	ACTUAL	PROJECTED						
	2002	2003	2004	2005	2006	2007	2008	2009
HIGH SERIES TOTAL	18,706	19,382	20,086	20,815	21,584	22,402	22,645	22,847
Classified	17,076	17,752	18,456	19,185	19,954	20,772	21,015	21,217
Undergraduates	12,242	12,764	13,335	13,927	14,555	15,226	15,318	15,364
First-Time Freshmen	1,877	1,899	1,971	2,082	2,204	2,319	2,411	2,457
Transfer	1,544	1,632	1,694	1,756	1,818	1,880	1,880	1,880
Continuing / Returning ..	8,821	9,233	9,670	10,089	10,533	11,027	11,027	11,027
Graduates	4,834	4,988	5,121	5,258	5,399	5,546	5,697	5,853
Unclassified	1,630	1,630	1,630	1,630	1,630	1,630	1,630	1,630
Undergraduates	588	588	588	588	588	588	588	588
Graduates	1,042	1,042	1,042	1,042	1,042	1,042	1,042	1,042
MIDDLE SERIES TOTAL 1/	18,706	19,046	19,453	19,850	20,266	20,741	20,902	21,017
Classified	17,076	17,475	17,882	18,279	18,695	19,170	19,331	19,446
Undergraduates	12,242	12,556	12,875	13,183	13,508	13,891	13,957	13,976
First-Time Freshmen	1,877	1,822	1,849	1,910	1,972	2,060	2,126	2,145
Transfer	1,544	1,535	1,574	1,614	1,654	1,694	1,694	1,694
Continuing / Returning ..	8,821	9,199	9,452	9,659	9,882	10,137	10,137	10,137
Graduates	4,834	4,919	5,007	5,096	5,187	5,279	5,374	5,470
Unclassified	1,630	1,571	1,571	1,571	1,571	1,571	1,571	1,571
Undergraduates	588	579	579	579	579	579	579	579
Graduates	1,042	992	992	992	992	992	992	992
LOW SERIES TOTAL	18,706	18,532	18,706	18,848	19,014	19,265	19,358	19,405
Classified	17,076	17,112	17,286	17,428	17,594	17,845	17,938	17,985
Undergraduates	12,242	12,384	12,516	12,615	12,738	12,945	12,994	12,997
First-Time Freshmen	1,877	1,736	1,727	1,749	1,771	1,838	1,887	1,890
Transfer	1,544	1,491	1,530	1,570	1,610	1,650	1,650	1,650
Continuing / Returning ..	8,821	9,157	9,259	9,296	9,357	9,457	9,457	9,457
Graduates	4,834	4,728	4,770	4,813	4,856	4,900	4,944	4,988
Unclassified	1,630	1,420	1,420	1,420	1,420	1,420	1,420	1,420
Undergraduates	588	500	500	500	500	500	500	500
Graduates	1,042	920	920	920	920	920	920	920

1/ The remaining tables in the report use the Middle Projection Series.

TABLE 2
HEADCOUNT ENROLLMENT OF CREDIT STUDENTS, BY REGISTRATION STATUS
MIDDLE PROJECTION SERIES
UNIVERSITY OF HAWAI'I AT MANOA
FALL 1996 TO FALL 2009

	HISTORICAL							PROJECTED						
	1996	1997	1998	1999	2000	2001	2002	2003	2004	2005	2006	2007	2008	2009
Total Headcount 1/	18,252	17,365	17,013	17,612	17,263	17,532	18,706	19,046	19,453	19,850	20,266	20,741	20,902	21,017
Classified	17,005	16,296	16,008	16,199	15,718	16,021	17,076	17,475	17,882	18,279	18,695	19,170	19,331	19,446
Classified Undergraduates	12,216	11,782	11,500	11,458	11,151	11,485	12,242	12,556	12,875	13,183	13,508	13,891	13,957	13,976
Freshmen	1,913	1,920	1,923	1,925	2,014	2,142	2,323	2,331	2,352	2,422	2,499	2,603	2,669	2,688
Sophomores	2,227	2,074	2,037	2,019	2,030	2,155	2,257	2,413	2,432	2,463	2,534	2,610	2,610	2,610
Juniors	3,116	2,996	2,822	2,761	2,669	2,834	3,071	3,105	3,291	3,329	3,380	3,473	3,473	3,473
Seniors	4,960	4,792	4,718	4,753	4,438	4,354	4,591	4,707	4,800	4,969	5,095	5,205	5,205	5,205
First-Time Freshmen	1,436	1,527	1,483	1,529	1,607	1,650	1,877	1,822	1,849	1,910	1,972	2,060	2,126	2,145
Direct from HI Public High Schools	874	957	924	879	826	846	966	876	889	912	930	985	1,011	1,026
Direct from HI Private High Schools ...	405	422	417	437	452	416	415	412	391	391	395	413	437	425
U.S. Mainland	85	90	87	136	243	286	398	428	460	495	532	545	559	573
Foreign & Possessions	41	39	29	50	52	54	64	67	70	73	76	78	80	82
Other First-Time Freshmen 2/	31	19	26	27	34	48	34	39	39	39	39	39	39	39
Transfer	1,081	1,253	1,262	1,381	1,237	1,537	1,544	1,535	1,574	1,614	1,654	1,694	1,694	1,694
Freshmen	81	119	119	124	119	163	145	153	157	161	165	169	169	169
Sophomores	342	406	423	424	394	526	507	515	528	541	555	568	568	568
Juniors	501	579	547	579	528	660	675	665	682	700	717	734	734	734
Seniors	157	149	173	254	196	188	217	202	207	212	217	223	223	223
Transfer	1,081	1,253	1,262	1,381	1,237	1,537	1,544	1,535	1,574	1,614	1,654	1,694	1,694	1,694
Other UH Institutions	692	773	742	770	661	741	671	706	706	706	706	706	706	706
HI Private Institutions	32	66	76	58	47	83	102	93	93	93	93	93	93	93
U.S. Mainland	304	350	379	447	447	594	699	639	678	718	758	798	798	798
Foreign & Possessions	22	43	40	80	49	61	15	39	39	39	39	39	39	39
Other Transfers 3/	31	21	25	26	33	58	57	58	58	58	58	58	58	58
Continuing & Returning	9,699	9,002	8,755	8,548	8,307	8,298	8,821	9,199	9,452	9,659	9,882	10,137	10,137	10,137
Freshmen	396	274	321	272	288	329	301	356	346	351	362	374	374	374
Sophomores	1,885	1,668	1,614	1,595	1,636	1,629	1,750	1,898	1,904	1,922	1,979	2,042	2,042	2,042
Juniors	2,615	2,417	2,275	2,182	2,141	2,174	2,396	2,440	2,609	2,629	2,663	2,739	2,739	2,739
Seniors	4,803	4,643	4,545	4,499	4,242	4,166	4,374	4,505	4,593	4,757	4,878	4,982	4,982	4,982

TABLE 2 (cont.)

	HISTORICAL							PROJECTED						
	1996	1997	1998	1999	2000	2001	2002	2003	2004	2005	2006	2007	2008	2009
Classified Graduates	4,789	4,514	4,508	4,741	4,567	4,536	4,834	4,919	5,007	5,096	5,187	5,279	5,374	5,470
Masters	2,934	2,704	2,697	2,844	2,765	2,752	2,922	2,980	3,040	3,101	3,163	3,226	3,291	3,357
Doctorate	1,275	1,271	1,234	1,217	1,179	1,191	1,264	1,289	1,315	1,341	1,368	1,395	1,423	1,451
First-Professional	456	448	458	476	485	500	535	537	539	541	543	545	547	549
Post-Baccalaureate	80	48	61	151	90	63	86	86	86	86	86	86	86	86
Graduate Special	44	43	58	53	48	30	27	27	27	27	27	27	27	27
Unclassified	1,247	1,069	1,005	1,413	1,545	1,511	1,630	1,571	1,571	1,571	1,571	1,571	1,571	1,571
Undergraduates 4/	317	256	294	481	570	569	588	579	579	579	579	579	579	579
Graduates	930	813	711	932	975	942	1,042	992	992	992	992	992	992	992

1/ Total includes Outreach College enrollment, beginning Fall 1999.

2/ Includes GED, students from Hawai'i who are not recent high school graduates and records with invalid data on high school.

3/ Includes records wth invalid data on previous college.

4/ Includes records wth invalid data on education level.

TABLE 3
HEADCOUNT ENROLLMENT OF CREDIT STUDENTS, BY COLLEGE
MIDDLE PROJECTION SERIES
UNIVERSITY OF HAWAI'I AT MANOA
FALL 2002 TO FALL 2009

COLLEGE	ACTUAL	PROJECTED						
	2002	2003	2004	2005	2006	2007	2008	2009
Campus Total	18,706	19,046	19,453	19,850	20,266	20,741	20,902	21,017
Undergraduate Level	12,830	13,135	13,454	13,762	14,087	14,470	14,536	14,555
Lower Division 1/	5,168	5,323	5,363	5,464	5,612	5,792	5,858	5,877
Upper Division	7,662	7,812	8,091	8,298	8,475	8,678	8,678	8,678
Graduate Level 2/	5,876	5,911	5,999	6,088	6,179	6,271	6,366	6,462
Classified	17,076	17,475	17,882	18,279	18,695	19,170	19,331	19,446
Undergraduates	12,242	12,556	12,875	13,183	13,508	13,891	13,957	13,976
Lower Division	4,580	4,744	4,784	4,885	5,033	5,213	5,279	5,298
Upper Division	7,662	7,812	8,091	8,298	8,475	8,678	8,678	8,678
Graduates	4,834	4,919	5,007	5,096	5,187	5,279	5,374	5,470
Unclassified	1,630	1,571	1,571	1,571	1,571	1,571	1,571	1,571
Undergraduate (Lower Division)	588	579	579	579	579	579	579	579
Graduate Level	1,042	992	992	992	992	992	992	992
COLLEGE OF ARTS & SCIENCES	10,549	10,817	11,077	11,322	11,593	11,913	12,011	12,072
Lower Division	3,936	4,077	4,114	4,200	4,328	4,479	4,535	4,553
Upper Division	4,713	4,802	4,987	5,106	5,209	5,338	5,338	5,338
Graduate Level	1,900	1,938	1,976	2,016	2,056	2,096	2,138	2,181
Arts & Humanities	1,355	1,388	1,424	1,460	1,493	1,525	1,535	1,544
Lower Division	236	246	249	256	263	268	270	271
Upper Division	768	784	810	832	850	870	870	870
Graduate Level	351	358	365	372	380	387	395	403
Languages, Ling & Lit	912	933	956	977	998	1,024	1,033	1,043
Lower Division	117	122	123	125	129	134	135	136
Upper Division	412	420	435	446	455	467	467	467
Graduate Level	383	391	398	406	414	423	431	440
Natural Sciences	2,033	2,084	2,136	2,184	2,234	2,293	2,313	2,325
Lower Division	592	613	620	631	651	673	683	685
Upper Division	1,003	1,024	1,060	1,088	1,109	1,137	1,137	1,137
Graduate Level	438	447	456	465	474	483	493	503
Social Sciences	2,234	2,285	2,344	2,399	2,452	2,513	2,532	2,549
Lower Division	354	368	371	378	389	404	408	410
Upper Division	1,195	1,219	1,261	1,294	1,322	1,353	1,353	1,353
Graduate Level	685	698	712	727	741	756	771	786
General Arts & Sciences	3,841	3,949	4,035	4,114	4,224	4,362	4,401	4,413
Lower Division	2,637	2,728	2,751	2,810	2,896	3,000	3,039	3,051
Upper Division	1,204	1,221	1,284	1,304	1,328	1,362	1,362	1,362
Other Arts & Sciences	174	178	182	188	192	196	197	198
Upper Division	131	134	137	142	145	149	149	149
Graduate Level	43	44	45	46	47	47	48	49
SCH OF HAWN, ASIAN & PAC ST	222	226	232	237	243	249	252	254
Lower Division	28	29	29	30	30	32	33	33
Upper Division	90	91	95	97	100	102	102	102
Graduate Level	104	106	108	110	113	115	117	119

TABLE 3 (cont.)

COLLEGE	ACTUAL	PROJECTED						
	2002	2003	2004	2005	2006	2007	2008	2009
SCH OF OCEAN & EARTH SCI TECH..	305	312	319	326	333	340	345	349
Lower Division	43	45	45	46	47	49	50	50
Upper Division	94	96	99	102	104	106	106	106
Graduate Level	168	171	175	178	182	185	189	193
SCHOOL OF ARCHITECTURE	209	216	221	228	235	242	246	248
Lower Division	69	72	72	73	76	79	80	80
Upper Division	104	106	109	113	115	117	117	117
Graduate Level	4	4	4	4	4	4	5	5
1st Professional (ArchD)	32	34	36	38	40	42	44	46
COLLEGE OF BUSINESS ADMIN	1,309	1,335	1,372	1,408	1,438	1,471	1,478	1,488
Lower Division	3	3	3	3	3	3	3	3
Upper Division	874	892	920	946	968	990	990	990
Graduate Level	432	440	449	459	467	478	485	495
SCH OF TRAVEL INDUSTRY MGT	349	357	367	376	386	396	398	398
Lower Division	76	79	79	81	84	87	88	88
Upper Division	253	258	267	274	280	287	287	287
Graduate Level	20	20	21	21	22	22	23	23
COLLEGE OF EDUCATION	1,295	1,321	1,347	1,378	1,405	1,433	1,450	1,467
Lower Division	4	4	4	4	4	4	4	4
Upper Division	448	459	470	485	496	508	508	508
Graduate Level	757	772	787	803	819	835	852	869
Post Baccalaureate	86	86	86	86	86	86	86	86
COLLEGE OF ENGINEERING	781	800	818	837	857	881	889	893
Lower Division	269	278	280	286	295	306	310	311
Upper Division	362	369	382	392	400	410	410	410
Graduate Level	150	153	156	159	162	165	169	172
COLLEGE OF TROP AG & HUM RES ..	594	607	622	638	653	669	675	678
Lower Division	122	126	127	130	134	139	141	141
Upper Division	314	320	331	340	348	356	356	356
Graduate Level	158	161	164	168	171	174	178	181
SCHOOL OF MEDICINE	499	504	510	514	521	526	530	534
Lower Division	2	2	2	2	2	2	2	2
Upper Division	58	59	61	62	65	65	65	65
Graduate Level	189	193	197	200	204	209	213	217
1st Professional (MD)	250	250	250	250	250	250	250	250
SCHOOL OF NURSING	428	438	449	461	471	483	485	487
Lower Division	24	25	25	26	26	28	28	28
Upper Division	316	323	332	342	350	358	358	358
Graduate Level	88	90	92	93	95	97	99	101
SCHOOL OF SOCIAL WORK	283	289	295	301	307	314	319	325
Lower Division	4	4	4	4	4	5	5	5
Upper Division	36	37	38	39	40	41	41	41
Graduate Level	243	248	253	258	263	268	273	279
SCHOOL OF LAW	265	265	265	265	265	265	265	265
1st Professional	253	253	253	253	253	253	253	253
1st Professional (Pre-Law, Uncls)	12	12	12	12	12	12	12	12

1/ Includes Unclassified Undergraduates and records with invalid data on education level.

2/ Includes Unclassified Graduates.

TABLE 4
STUDENT SEMESTER HOURS OFFERED, BY COLLEGE
MIDDLE PROJECTION SERIES
UNIVERSITY OF HAWAII AT MANOA
FALL 2002 TO FALL 2009

COLLEGE	ACTUAL	PROJECTED						
	2002	2003	2004	2005	2006	2007	2008	2009
TOTAL	213,592	217,938	222,670	227,360	232,321	238,010	239,553	240,472
Lower Division	98,834	101,463	103,420	105,633	108,352	111,579	112,429	112,695
Upper Division	76,721	78,082	80,338	82,309	84,024	85,952	86,118	86,238
Graduate Level	38,037	38,393	38,912	39,418	39,945	40,479	41,006	41,539
COLLEGE OF ARTS & SCIENCES 1/ ...	131,128	134,218	137,195	140,182	143,522	147,413	148,451	148,959
Lower Division	80,534	82,734	84,283	86,081	88,311	90,963	91,683	91,910
Upper Division	40,194	40,929	42,159	43,145	44,049	45,085	45,192	45,264
Graduate Level	10,400	10,555	10,753	10,956	11,162	11,365	11,576	11,785
Arts & Humanities	32,449	33,237	33,963	34,723	35,569	36,524	36,765	36,877
Lower Division	20,003	20,558	20,938	21,395	21,951	22,604	22,779	22,835
Upper Division	10,801	11,010	11,325	11,597	11,851	12,124	12,156	12,179
Graduate Level	1,645	1,669	1,700	1,731	1,767	1,796	1,830	1,863
Languages, Ling & Lit	31,017	31,729	32,468	33,172	33,955	34,877	35,112	35,233
Lower Division	20,136	20,658	21,089	21,543	22,086	22,730	22,896	22,957
Upper Division	8,890	9,047	9,319	9,531	9,732	9,967	9,995	10,014
Graduate Level	1,991	2,024	2,060	2,098	2,137	2,180	2,221	2,262
Natural Sciences	32,074	32,868	33,548	34,269	35,099	36,091	36,384	36,513
Lower Division	24,008	24,669	25,127	25,660	26,329	27,132	27,355	27,417
Upper Division	5,450	5,542	5,713	5,849	5,960	6,099	6,113	6,127
Graduate Level	2,616	2,657	2,708	2,760	2,810	2,860	2,916	2,969
Social Sciences 1/	34,180	34,935	35,742	36,513	37,352	38,330	38,585	38,724
Lower Division	15,461	15,891	16,162	16,496	16,928	17,444	17,588	17,632
Upper Division	14,673	14,943	15,402	15,759	16,087	16,468	16,501	16,517
Graduate Level	4,046	4,101	4,178	4,258	4,337	4,418	4,496	4,575
Other Arts & Sciences	1,408	1,449	1,474	1,505	1,547	1,591	1,605	1,612
Lower Division	926	958	967	987	1,017	1,053	1,065	1,069
Upper Division	380	387	400	409	419	427	427	427
Graduate Level	102	104	107	109	111	111	113	116
SCH OF HAWN, ASIAN & PAC ST	3,030	3,083	3,154	3,223	3,298	3,384	3,406	3,419
Lower Division	1,642	1,681	1,717	1,755	1,801	1,854	1,867	1,871
Upper Division	1,105	1,114	1,144	1,169	1,190	1,219	1,222	1,226
Graduate Level	283	288	293	299	307	311	317	322
SCH OF OCEAN & EARTH SCI TECH ..	4,735	4,834	4,929	5,031	5,145	5,268	5,322	5,357
Lower Division	2,654	2,718	2,764	2,821	2,888	2,969	2,992	2,998
Upper Division	901	916	937	962	982	1,001	1,005	1,008
Graduate Level	1,180	1,200	1,228	1,248	1,275	1,298	1,325	1,351
SCHOOL OF ARCHITECTURE	2,003	2,043	2,077	2,130	2,177	2,224	2,234	2,236
Lower Division	940	967	978	999	1,029	1,059	1,067	1,068
Upper Division	716	726	743	766	778	790	790	790
Graduate Level	347	350	356	365	370	375	377	378

TABLE 4 (cont.)

COLLEGE	ACTUAL	PROJECTED						
	2002	2003	2004	2005	2006	2007	2008	2009
COLLEGE OF BUSINESS ADMIN	16,723	17,011	17,455	17,874	18,252	18,662	18,743	18,836
Lower Division	3,015	3,082	3,164	3,232	3,313	3,403	3,420	3,424
Upper Division	10,081	10,258	10,551	10,829	11,062	11,300	11,310	11,323
Graduate Level	3,627	3,671	3,740	3,813	3,877	3,959	4,013	4,089
SCH OF TRAVEL INDUSTRY MGT	2,987	3,043	3,141	3,216	3,291	3,369	3,378	3,380
Lower Division	807	824	847	866	888	912	914	915
Upper Division	2,009	2,048	2,116	2,171	2,217	2,270	2,271	2,271
Graduate Level	171	171	178	179	186	187	193	194
COLLEGE OF EDUCATION	16,691	16,919	17,269	17,643	17,964	18,333	18,461	18,574
Lower Division	2,243	2,288	2,340	2,391	2,442	2,511	2,526	2,532
Upper Division	9,160	9,311	9,527	9,769	9,956	10,171	10,197	10,216
Graduate Level	5,288	5,320	5,402	5,483	5,566	5,651	5,738	5,826
COLLEGE OF ENGINEERING	5,187	5,288	5,441	5,571	5,692	5,831	5,865	5,886
Lower Division	1,261	1,291	1,321	1,353	1,387	1,427	1,435	1,438
Upper Division	3,087	3,143	3,248	3,331	3,398	3,481	3,485	3,487
Graduate Level	839	854	872	887	907	923	945	961
COLLEGE OF TROP AG & HUM RES ...	8,788	8,975	9,199	9,414	9,634	9,881	9,941	9,967
Lower Division	4,002	4,106	4,189	4,281	4,392	4,523	4,557	4,565
Upper Division	3,991	4,061	4,187	4,292	4,384	4,486	4,493	4,497
Graduate Level	795	808	823	841	858	872	891	905
SCHOOL OF MEDICINE	11,521	11,585	11,706	11,796	11,910	12,034	12,082	12,120
Lower Division	1,449	1,480	1,516	1,547	1,584	1,634	1,644	1,649
Upper Division	1,849	1,865	1,917	1,951	1,996	2,030	2,034	2,037
Graduate Level	8,223	8,240	8,273	8,298	8,330	8,370	8,404	8,434
SCHOOL OF NURSING	3,998	4,085	4,191	4,309	4,405	4,512	4,522	4,533
Lower Division	200	204	210	216	222	227	227	227
Upper Division	3,282	3,356	3,446	3,552	3,632	3,723	3,723	3,723
Graduate Level	516	525	535	541	551	562	572	583
SCHOOL OF SOCIAL WORK	2,836	2,889	2,948	3,005	3,064	3,131	3,179	3,236
Lower Division	87	88	91	91	95	97	97	98
Upper Division	346	355	363	372	380	396	396	396
Graduate Level	2,403	2,446	2,494	2,542	2,589	2,638	2,686	2,742
SCHOOL OF LAW	3,965	3,965	3,965	3,966	3,967	3,968	3,969	3,969
Graduate Level	3,965	3,965	3,965	3,966	3,967	3,968	3,969	3,969

1/ Military Studies is included with Social Sciences, College of Arts & Sciences.

TABLE 5
 FULL-TIME EQUIVALENT COURSE ENROLLMENT SERVED, BY COLLEGE
 MIDDLE PROJECTION SERIES
 UNIVERSITY OF HAWAI'I AT MANOA
 FALL 2002 TO FALL 2009

COLLEGE	ACTUAL	PROJECTED						
	2002	2003	2004	2005	2006	2007	2008	2009
TOTAL	14,876	15,170	15,492	15,814	16,154	16,542	16,651	16,724
Lower Division	6,590	6,765	6,892	7,041	7,224	7,439	7,495	7,512
Upper Division	5,118	5,206	5,356	5,487	5,600	5,728	5,740	5,748
Graduate Level	3,168	3,199	3,244	3,286	3,330	3,375	3,416	3,464
COLLEGE OF ARTS & SCIENCES 1/ ...	8,915	9,124	9,326	9,528	9,752	10,016	10,090	10,125
Lower Division	5,369	5,516	5,618	5,739	5,887	6,064	6,113	6,126
Upper Division	2,681	2,728	2,811	2,876	2,936	3,005	3,012	3,017
Graduate Level	865	880	897	913	929	947	965	982
Arts & Humanities	2,191	2,244	2,293	2,343	2,400	2,465	2,482	2,489
Lower Division	1,334	1,371	1,396	1,426	1,463	1,507	1,519	1,522
Upper Division	721	734	755	773	790	808	810	812
Graduate Level	136	139	142	144	147	150	153	155
Languages, Ling & Lit	2,101	2,149	2,199	2,246	2,299	2,361	2,377	2,387
Lower Division	1,342	1,377	1,406	1,436	1,472	1,515	1,526	1,530
Upper Division	594	603	621	635	649	664	666	668
Graduate Level	165	169	172	175	178	182	185	189
Natural Sciences	2,183	2,235	2,282	2,331	2,386	2,454	2,475	2,483
Lower Division	1,601	1,645	1,675	1,711	1,755	1,809	1,824	1,828
Upper Division	363	369	381	390	397	407	408	408
Graduate Level	219	221	226	230	234	238	243	247
Social Sciences 1/	2,344	2,397	2,452	2,506	2,562	2,629	2,648	2,657
Lower Division	1,030	1,059	1,077	1,100	1,129	1,163	1,173	1,175
Upper Division	977	996	1,027	1,051	1,072	1,098	1,100	1,101
Graduate Level	337	342	348	355	361	368	375	381
Other Arts & Sciences	96	99	100	102	105	107	108	109
Lower Division	62	64	64	66	68	70	71	71
Upper Division	26	26	27	27	28	28	28	28
Graduate Level	8	9	9	9	9	9	9	10
SCH OF HAWN, ASIAN & PAC ST	207	210	214	220	225	231	231	234
Lower Division	110	112	114	117	120	124	124	125
Upper Division	74	74	76	78	79	81	81	82
Graduate Level	23	24	24	25	26	26	26	27
SCH OF OCEAN & EARTH SCI TECH ..	336	342	348	356	364	373	376	380
Lower Division	176	181	184	188	193	198	199	200
Upper Division	61	61	62	64	65	67	67	67
Graduate Level	99	100	102	104	106	108	110	113
SCHOOL OF ARCHITECTURE	140	141	145	148	152	155	155	156
Lower Division	63	64	65	67	69	71	71	71
Upper Division	48	48	50	51	52	53	53	53
Graduate Level	29	29	30	30	31	31	31	32

TABLE 5 (cont.)

COLLEGE	ACTUAL	PROJECTED						
	2002	2003	2004	2005	2006	2007	2008	2009
COLLEGE OF BUSINESS ADMIN	1,176	1,195	1,226	1,255	1,281	1,310	1,316	1,324
Lower Division	201	205	211	215	221	227	228	228
Upper Division	672	684	703	722	737	753	754	755
Graduate Level	303	306	312	318	323	330	334	341
SCH OF TRAVEL INDUSTRY MGT	202	206	212	218	223	228	228	228
Lower Division	54	55	56	58	59	61	61	61
Upper Division	134	137	141	145	148	151	151	151
Graduate Level	14	14	15	15	16	16	16	16
COLLEGE OF EDUCATION	1,201	1,217	1,241	1,267	1,291	1,316	1,326	1,336
Lower Division	150	153	156	159	163	167	168	169
Upper Division	610	621	635	651	664	678	680	681
Graduate Level	441	443	450	457	464	471	478	486
COLLEGE OF ENGINEERING	360	367	378	386	395	404	407	408
Lower Division	84	86	88	90	92	95	96	96
Upper Division	206	210	217	222	227	232	232	232
Graduate Level	70	71	73	74	76	77	79	80
COLLEGE OF TROP AG & HUM RES ...	599	612	627	641	657	674	678	679
Lower Division	267	274	279	285	293	302	304	304
Upper Division	267	271	279	286	292	299	300	300
Graduate Level	65	67	69	70	72	73	74	75
SCHOOL OF MEDICINE	907	910	918	925	933	942	946	949
Lower Division	97	99	101	103	106	109	110	110
Upper Division	124	124	128	130	133	135	136	136
Graduate Level	686	687	689	692	694	698	700	703
SCHOOL OF NURSING	274	282	289	296	303	310	311	312
Lower Division	13	14	14	14	15	15	15	15
Upper Division	218	224	230	237	242	248	248	248
Graduate Level	43	44	45	45	46	47	48	49
SCHOOL OF SOCIAL WORK	229	234	238	243	247	252	256	262
Lower Division	6	6	6	6	6	6	6	7
Upper Division	23	24	24	25	25	26	26	26
Graduate Level	200	204	208	212	216	220	224	229
SCHOOL OF LAW	330	330	330	331	331	331	331	331
Graduate Level	330	330	330	331	331	331	331	331

1/ Military Studies is included with Social Sciences, College of Arts & Sciences.

TABLE 6
HEADCOUNT ENROLLMENT OF CREDIT STUDENTS, BY ATTENDANCE STATUS
MIDDLE PROJECTION SERIES
UNIVERSITY OF HAWAI'I AT MANOA
FALL 2002 TO FALL 2009

ATTENDANCE STATUS	ACTUAL	PROJECTED						
	2002	2003	2004	2005	2006	2007	2008	2009
TOTAL	18,706	19,046	19,453	19,850	20,266	20,741	20,902	21,017
Full-time.....	13,720	13,842	14,137	14,426	14,728	15,073	15,191	15,274
Lower Division	4,695	4,764	4,866	4,966	5,070	5,188	5,229	5,257
Upper Division	6,206	6,195	6,327	6,456	6,591	6,746	6,798	6,836
Graduate Level	2,819	2,883	2,944	3,004	3,067	3,139	3,164	3,181
Part-time	4,986	5,204	5,316	5,424	5,538	5,668	5,711	5,743
Lower Division 1/	473	510	521	532	543	555	559	563
Upper Division	1,456	1,610	1,645	1,678	1,713	1,754	1,767	1,777
Graduate Level	3,057	3,084	3,150	3,214	3,282	3,359	3,385	3,403

1/ Includes records with invalid data on education level.

Lower Division = Freshmen, Sophomores & Unclassified Undergraduate students.

Upper Division = Juniors & Seniors

APPENDIX A
HAWAI'I PUBLIC HIGH SCHOOL SENIORS, BY SCHOOL DISTRICT
ACADEMIC YEARS 1995-96 TO 2008-09

SCHOOL DISTRICT	HISTORICAL 1/								PROJECTED 2/					
	1995-96	1996-97	1997-98	1998-99	1999-00	2000-01	2001-02	2002-03	2003-04	2004-05	2005-06	2006-07	2007-08	2008-09
TOTAL	9,671	9,033	9,459	9,523	9,698	9,232	9,457	9,052	9,234	9,447	9,596	10,053	10,415	10,543
O'ahu Districts	6,285	5,899	6,130	6,117	6,247	5,860	6,064	5,751	5,922	6,006	6,237	6,564	6,829	6,902
Honolulu District	1,858	1,774	1,779	1,793	1,917	1,743	1,843	1,696	1,685	1,773	1,849	1,992	1,955	2,057
Central District	1,933	1,742	1,819	1,744	1,715	1,596	1,714	1,664	1,647	1,652	1,622	1,744	1,784	1,746
Leeward District	1,464	1,372	1,516	1,580	1,552	1,502	1,519	1,455	1,631	1,634	1,777	1,846	2,088	2,090
Windward District	1,030	1,011	1,016	1,000	1,063	1,019	988	936	959	947	989	982	1,002	1,009
Neighbor Island Districts	3,386	3,134	3,329	3,406	3,451	3,372	3,393	3,301	3,312	3,441	3,359	3,489	3,586	3,641
Hawai'i District	1,531	1,487	1,564	1,570	1,653	1,589	1,598	1,586	1,575	1,559	1,533	1,512	1,572	1,621
Maui District	1,127	1,004	1,105	1,168	1,185	1,186	1,184	1,172	1,155	1,234	1,157	1,327	1,346	1,305
Kaua+i District	728	643	660	668	613	597	611	543	582	648	669	650	668	715

1/ Department of Education for the State of Hawai'i.

2/ Department of Education, "Statewide Enrollment Projections, 2003-04 to 2008-09," April 2003.

**APPENDIX B
HAWAI'I HIGH SCHOOL GRADUATES
WICHE HISTORICAL AND PROJECTED - 1998 SERIES**

Year	Total	% Chge	Public	% Chge	Private	% Chge
1986	12,468		9,958		2,510	
1987	13,102	5.1	10,491	5.4	2,611	4.0
1988	13,400	2.3	10,751	2.5	2,649	1.5
1989	13,059	-2.5	10,551	-1.9	2,508	-5.3
1990	11,908	-8.8	9,526	-9.7	2,382	-5.0
1991	11,896	-0.1	9,519	-0.1	2,377	-0.2
1992	11,970	0.6	9,610	1.0	2,360	-0.7
1993	11,585	-3.2	9,284	-3.4	2,301	-2.5
1994	12,337	6.5	9,900	6.6	2,437	5.9
1995	12,359	0.2	9,972	0.7	2,387	-2.1
1996	12,441	0.7	9,992	0.2	2,449	2.6
1997	12,125	-2.5	9,562	-4.3	2,563	4.7
1998	13,312	9.8	10,758	12.5	2,554	-0.4
1999	14,063	5.6	11,399	6.0	2,664	4.3
2000	13,922	-1.0	11,230	-1.5	2,692	1.1
2001	14,043	0.9	11,386	1.4	2,657	-1.3
2002	13,931	-0.8	11,424	0.3	2,507	-5.6
2003	13,651	-2.0	11,214	-1.8	2,437	-2.8
2004	13,835	1.3	11,524	2.8	2,311	-5.2
2005	13,958	0.9	11,647	1.1	2,311	0.0
2006	14,343	2.8	12,004	3.1	2,339	1.2
2007	14,799	3.2	12,355	2.9	2,444	4.5
2008	15,564	5.2	12,979	5.1	2,585	5.8
2009	15,134	-2.8	12,620	-2.8	2,514	-2.7
2010	15,091	-0.3	12,584	-0.3	2,507	-0.3
2011	14,883	-1.4	12,411	-1.4	2,472	-1.4
2012	14,826	-0.4	12,363	-0.4	2,463	-0.4

Note: Horizontal line delimits WICHE historical from projected numbers.

Note: WICHE "Historical" data may differ from UH IRO compiled data shown in the MAPS reports on the High School Background of First-Time Students.

Source: Western Interstate Commission for Higher Education, February 1998.