

ENROLLMENT PROJECTIONS
UNIVERSITY OF HAWAI‘I AT MĀNOA
FALL 2008 TO FALL 2014

Institutional Research Office
University of Hawai‘i
June 2008

File Reference: Management and Planning Support Folder, Projections

Reports available online at: <http://www.hawaii.edu/iro/maps.htm>

University of Hawai'i at Mānoa
Enrollment Projections

Figure 1
Historical and Projected Headcount Enrollment

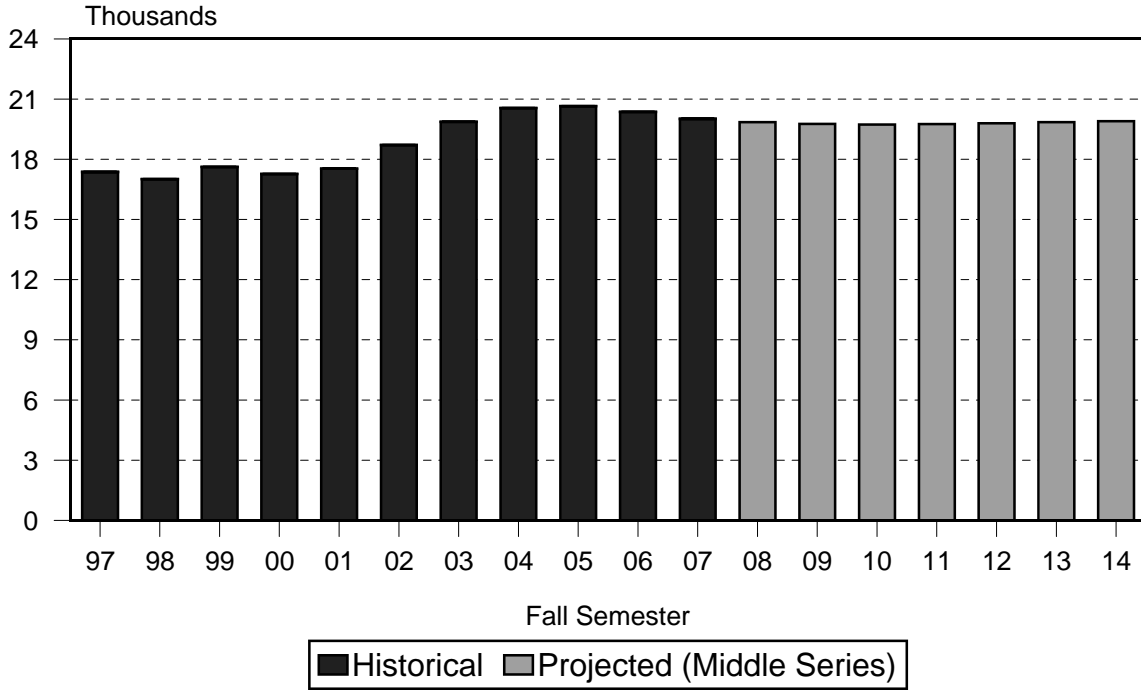
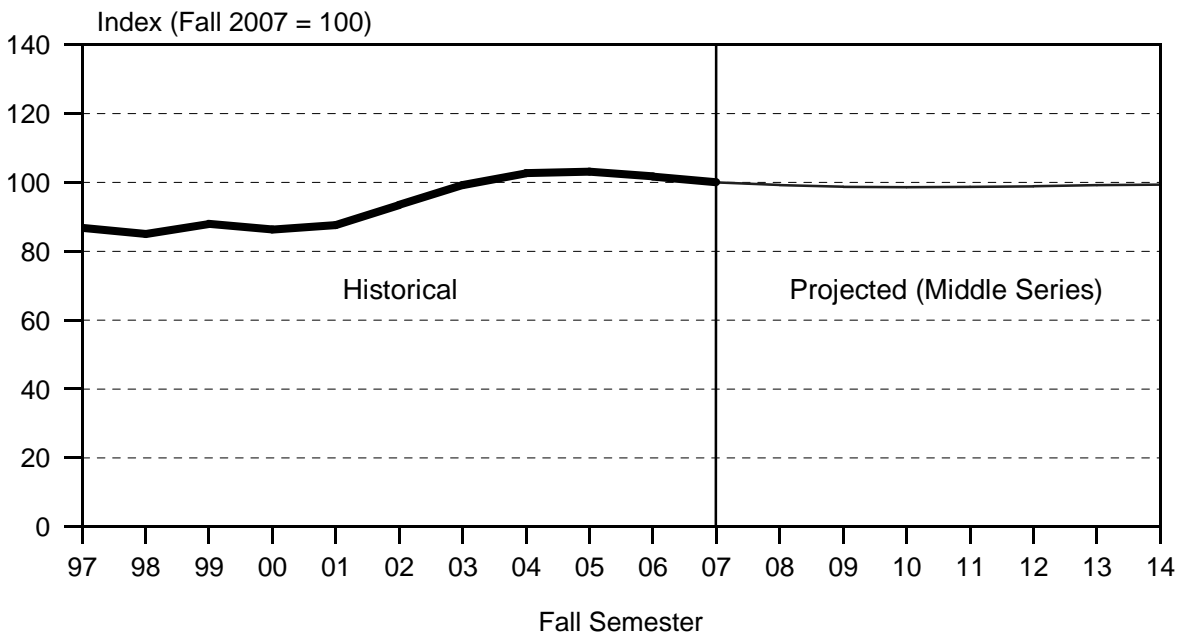


Figure 2
UH Mānoa Headcount Enrollment - 10 Year



University of Hawai'i at Mānoa
Enrollment Projections

Figure 3
High, Middle and Low Projection Series

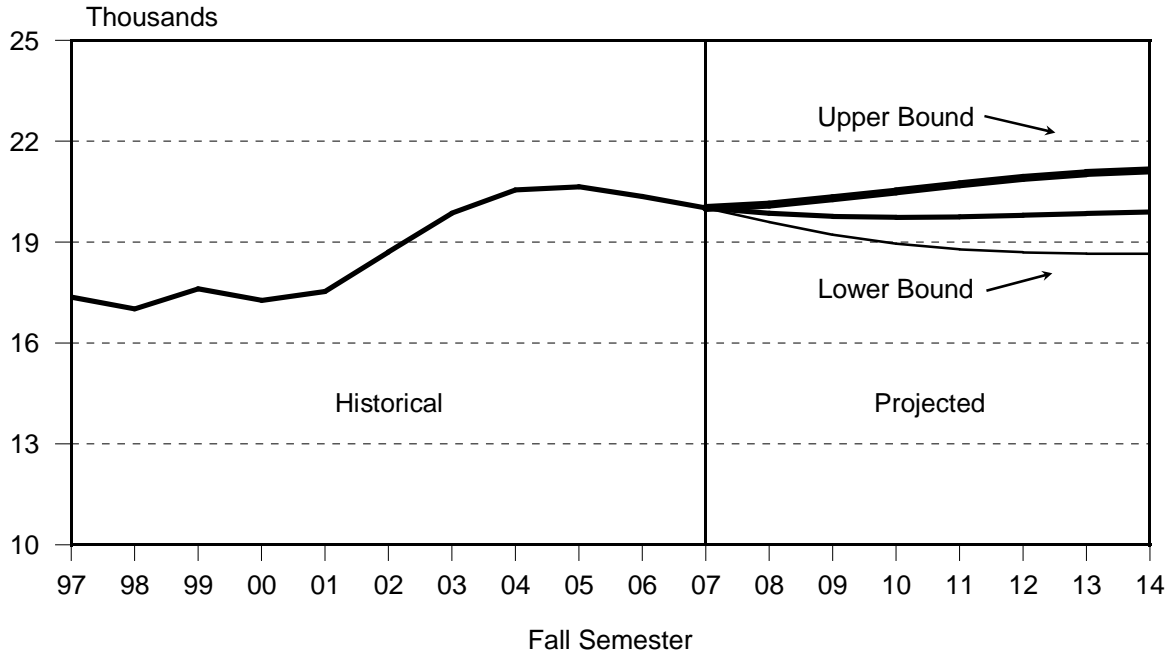
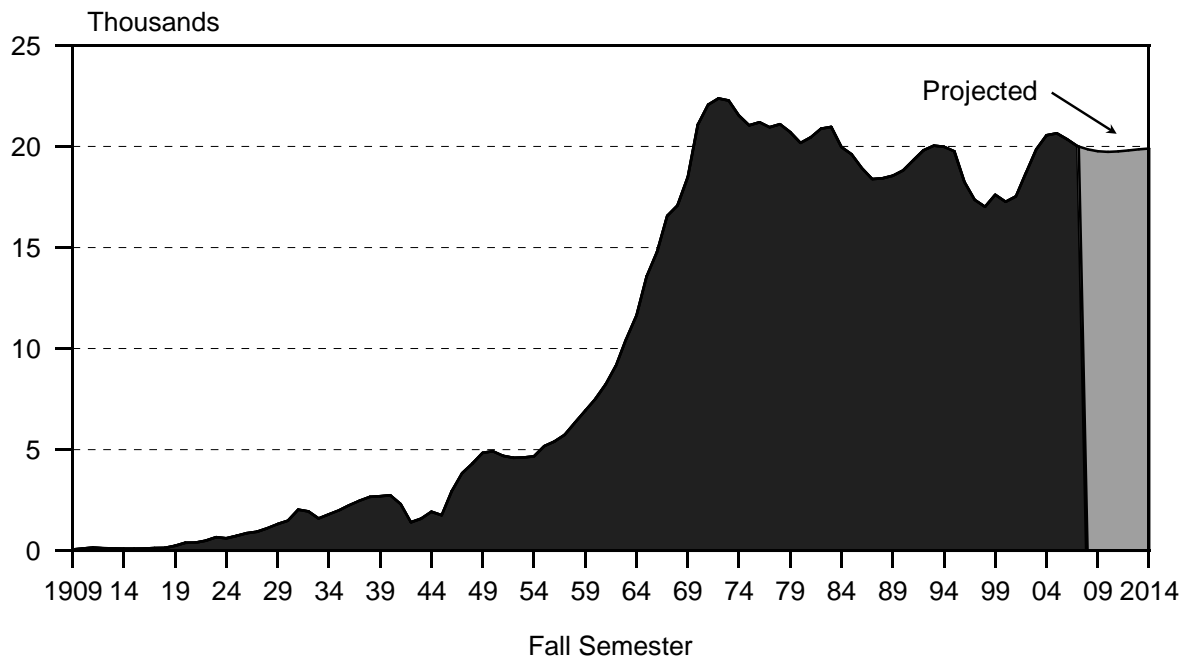


Figure 4
UH Mānoa Headcount Enrollment - Historical



University of Hawai'i at Mānoa
Enrollment Projections

Figure 5
First-Time Freshmen

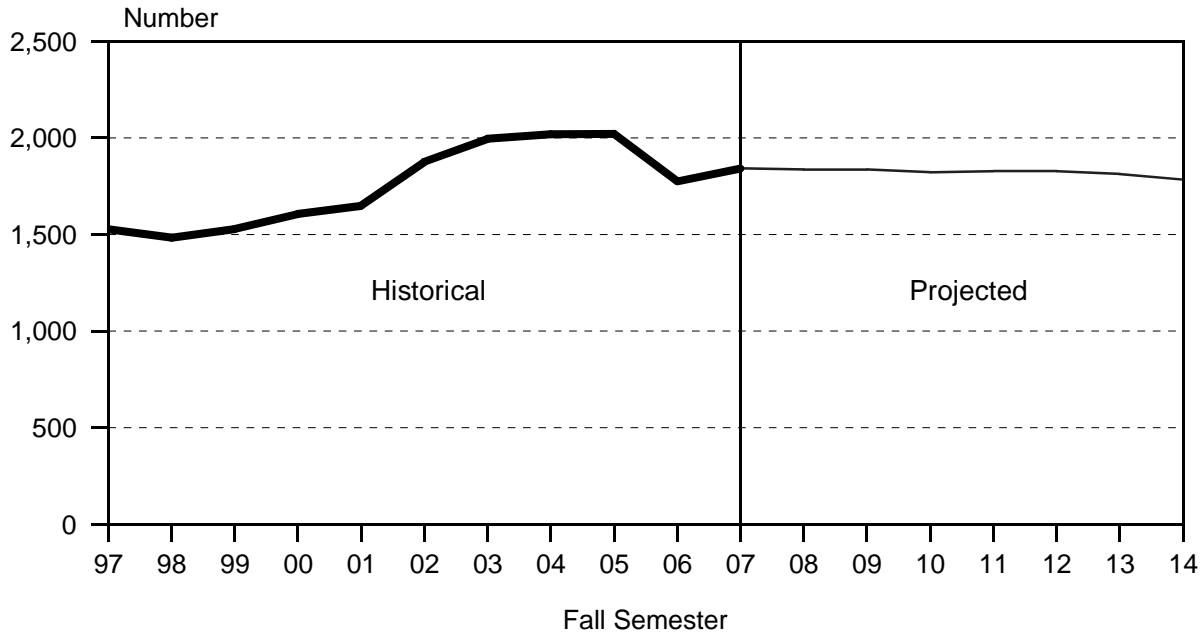
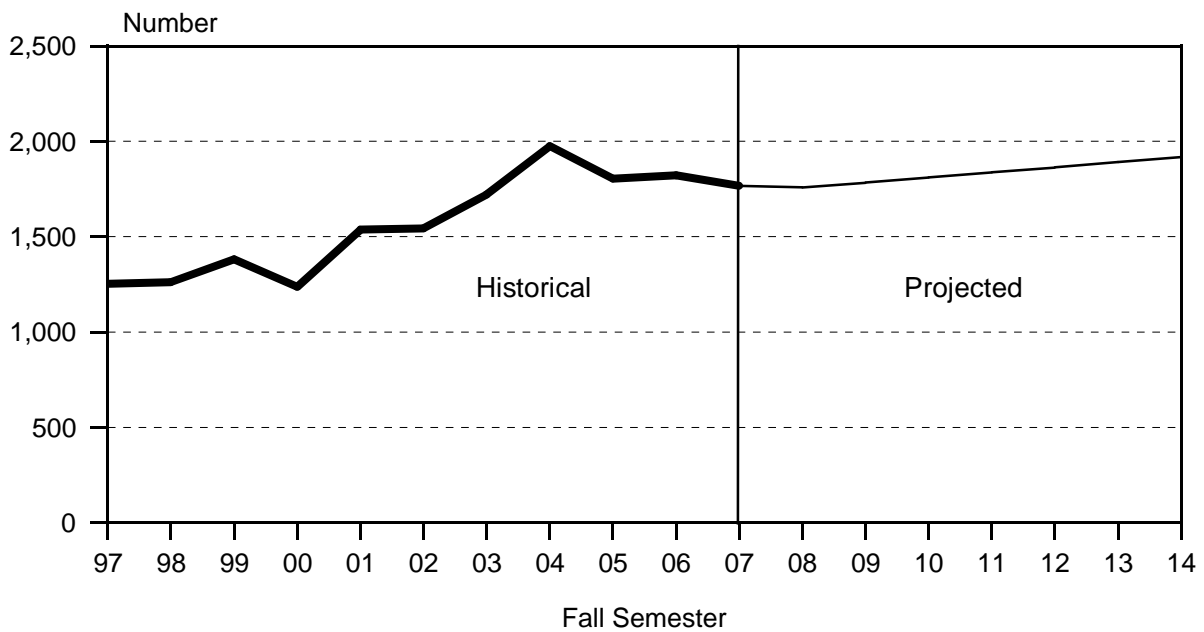


Figure 6
Classified Undergraduate Transfers



University of Hawai'i at Mānoa
Enrollment Projections

Figure 7
Classified Undergraduate Returning

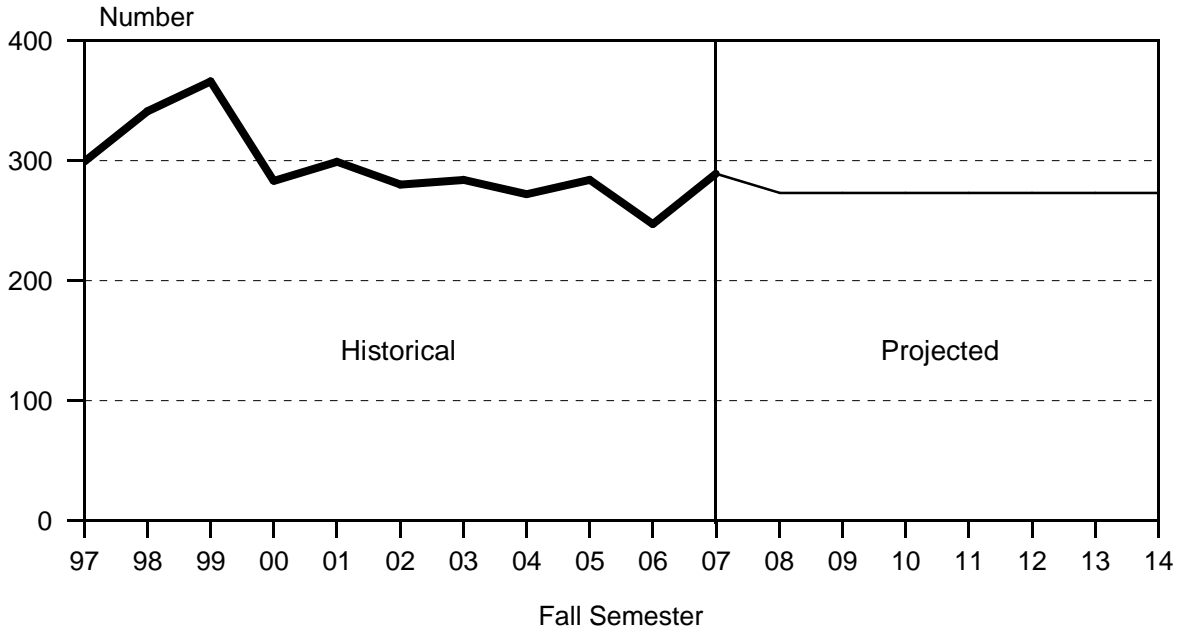
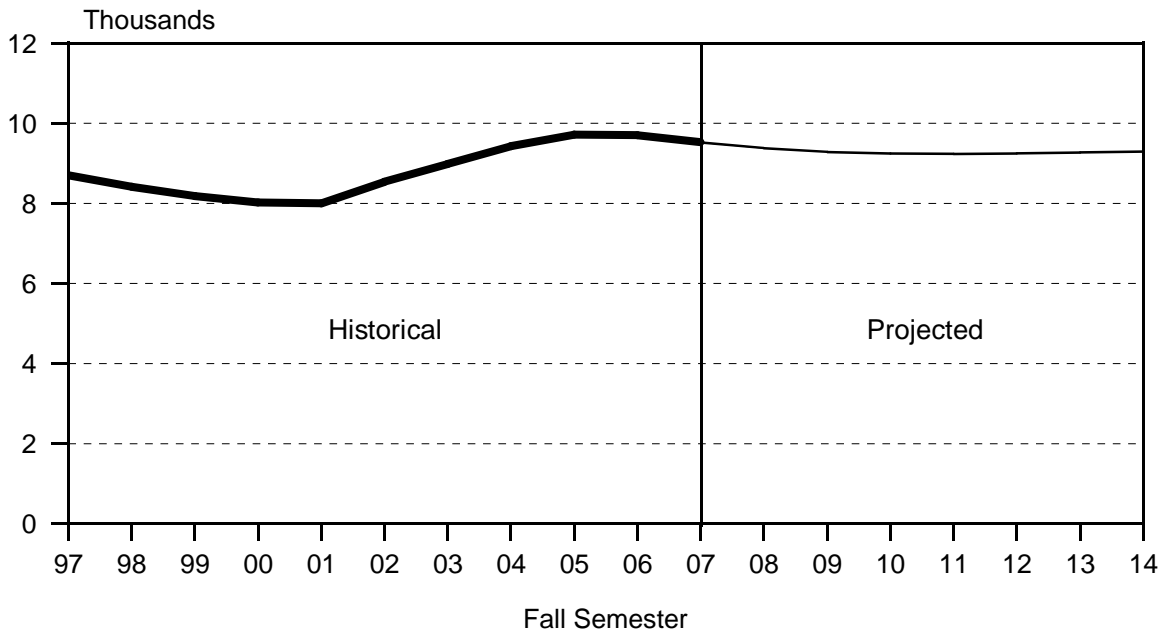


Figure 8
Classified Undergraduate Continuing



University of Hawai'i at Mānoa Enrollment Projections

Figure 9 Classified Graduate Enrollment

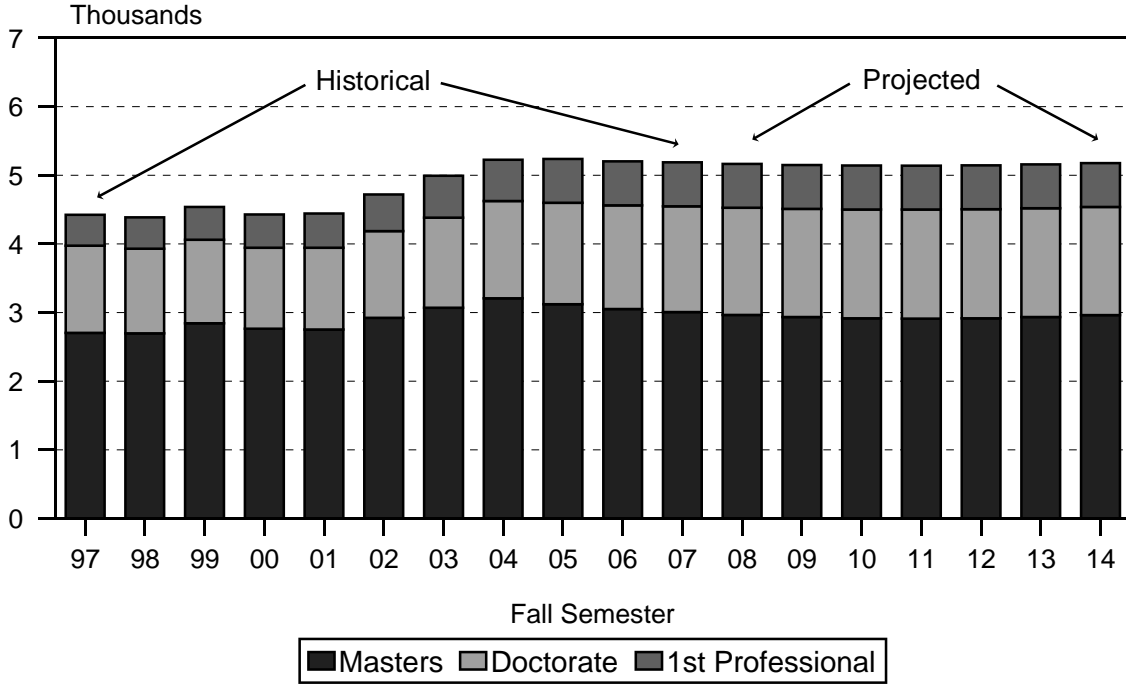


Figure 10 Unclassified Enrollment

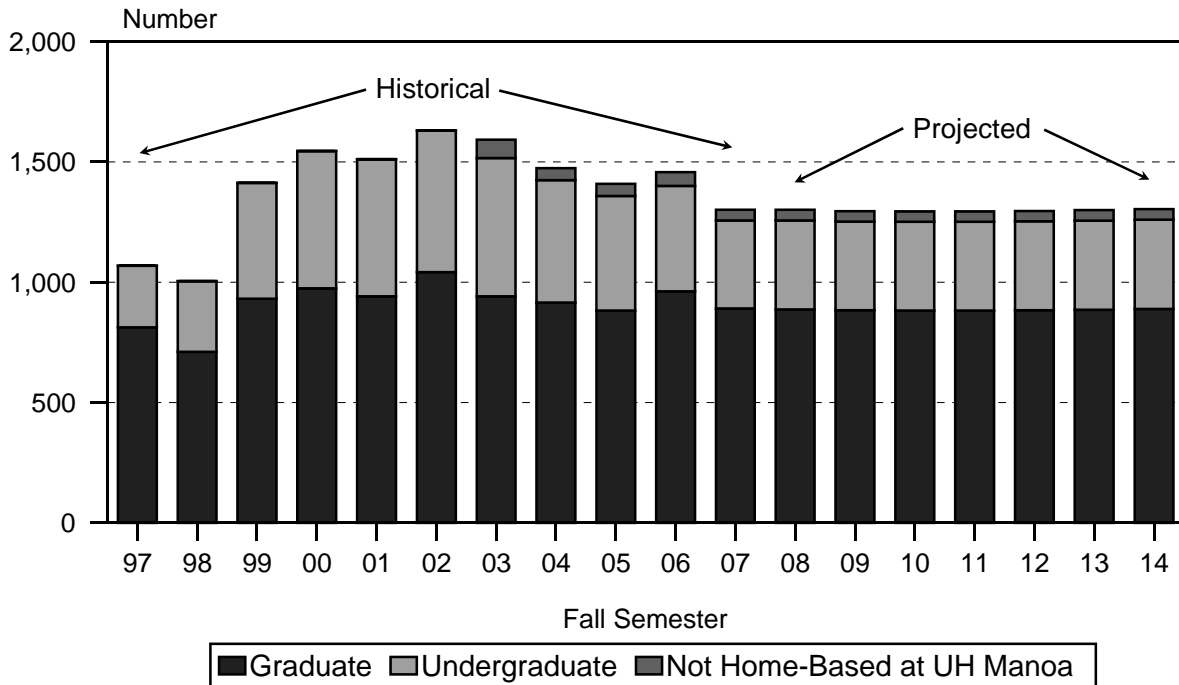


TABLE 1
HEADCOUNT ENROLLMENT OF CREDIT STUDENTS, BY REGISTRATION STATUS
MIDDLE PROJECTION SERIES
UNIVERSITY OF HAWAI'I AT M NOA
FALL 2001 TO FALL 2014

| | HISTORICAL | | | | | | | PROJECTED | | | | | | |
|--|------------|--------|--------|--------|--------|--------|--------|-----------|--------|--------|--------|--------|--------|--------|
| | 2001 | 2002 | 2003 | 2004 | 2005 | 2006 | 2007 | 2008 | 2009 | 2010 | 2011 | 2012 | 2013 | 2014 |
| Total Headcount | 17,532 | 18,706 | 19,863 | 20,549 | 20,644 | 20,357 | 20,051 | 19,855 | 19,762 | 19,731 | 19,751 | 19,798 | 19,854 | 19,895 |
| Classified | 16,021 | 17,076 | 18,271 | 19,075 | 19,235 | 18,900 | 18,750 | 18,554 | 18,467 | 18,437 | 18,457 | 18,502 | 18,554 | 18,591 |
| Classified Undergraduates 1/ | 11,485 | 12,242 | 13,102 | 13,693 | 13,826 | 13,542 | 13,417 | 13,244 | 13,173 | 13,152 | 13,173 | 13,212 | 13,251 | 13,269 |
| Freshmen | 2,142 | 2,323 | 2,782 | 2,558 | 2,554 | 2,341 | 2,363 | 2,366 | 2,368 | 2,355 | 2,361 | 2,364 | 2,350 | 2,320 |
| Sophomores | 2,155 | 2,257 | 2,949 | 2,626 | 2,578 | 2,606 | 2,475 | 2,466 | 2,476 | 2,486 | 2,485 | 2,497 | 2,509 | 2,506 |
| Juniors | 2,834 | 3,071 | 3,908 | 3,475 | 3,689 | 3,508 | 3,539 | 3,388 | 3,391 | 3,414 | 3,436 | 3,447 | 3,471 | 3,496 |
| Seniors | 4,354 | 4,591 | 3,463 | 5,034 | 5,005 | 5,087 | 5,040 | 5,024 | 4,938 | 4,897 | 4,891 | 4,904 | 4,921 | 4,947 |
| Entering Classified Undergraduates | 3,486 | 3,701 | 4,002 | 4,266 | 4,109 | 3,844 | 3,898 | 3,867 | 3,894 | 3,906 | 3,940 | 3,965 | 3,977 | 3,974 |
| First-Time Freshmen | 1,650 | 1,877 | 1,996 | 2,019 | 2,021 | 1,775 | 1,843 | 1,836 | 1,837 | 1,822 | 1,829 | 1,828 | 1,813 | 1,783 |
| Direct from HI Public High Schools .. | 846 | 976 | 899 | 893 | 958 | 773 | 830 | 807 | 814 | 776 | 780 | 787 | 766 | 731 |
| Direct from HI Private High Schools . | 416 | 405 | 434 | 385 | 400 | 379 | 412 | 416 | 410 | 433 | 436 | 428 | 434 | 439 |
| U.S. Mainland | 286 | 398 | 547 | 620 | 529 | 498 | 502 | 500 | 500 | 500 | 500 | 500 | 500 | 500 |
| Foreign & U.S. Related Areas 2/ | 54 | 64 | 77 | 71 | 90 | 83 | 67 | 75 | 75 | 75 | 75 | 75 | 75 | 75 |
| Other First-Time Freshmen 3/ | 48 | 34 | 39 | 50 | 44 | 42 | 32 | 38 | 38 | 38 | 38 | 38 | 38 | 38 |
| Transfer | 1,537 | 1,544 | 1,722 | 1,975 | 1,804 | 1,822 | 1,766 | 1,758 | 1,784 | 1,811 | 1,838 | 1,864 | 1,891 | 1,918 |
| Freshmen | 163 | 145 | 186 | 174 | 141 | 150 | 143 | 144 | 146 | 148 | 150 | 152 | 154 | 157 |
| Sophomores | 526 | 507 | 563 | 648 | 572 | 570 | 566 | 557 | 565 | 573 | 582 | 590 | 599 | 607 |
| Juniors | 660 | 675 | 770 | 850 | 809 | 845 | 783 | 797 | 809 | 822 | 834 | 846 | 858 | 870 |
| Seniors | 188 | 217 | 203 | 303 | 282 | 257 | 274 | 260 | 264 | 268 | 272 | 276 | 280 | 284 |
| Returning | 299 | 280 | 284 | 272 | 284 | 247 | 289 | 273 | 273 | 273 | 273 | 273 | 273 | 273 |
| Freshmen | 17 | 32 | 27 | 27 | 22 | 19 | 22 | 21 | 21 | 21 | 21 | 21 | 21 | 21 |
| Sophomores | 54 | 55 | 65 | 73 | 75 | 68 | 71 | 71 | 71 | 71 | 71 | 71 | 71 | 71 |
| Juniors | 67 | 62 | 64 | 60 | 67 | 55 | 65 | 61 | 61 | 61 | 61 | 61 | 61 | 61 |
| Seniors | 161 | 131 | 128 | 112 | 120 | 105 | 131 | 120 | 120 | 120 | 120 | 120 | 120 | 120 |
| Continuing | 7,999 | 8,541 | 9,100 | 9,427 | 9,717 | 9,698 | 9,519 | 9,377 | 9,279 | 9,246 | 9,233 | 9,247 | 9,274 | 9,295 |
| Freshmen | 312 | 269 | 573 | 338 | 370 | 397 | 355 | 365 | 364 | 364 | 361 | 363 | 362 | 359 |
| Sophomores | 1,575 | 1,695 | 2,321 | 1,905 | 1,931 | 1,968 | 1,838 | 1,838 | 1,840 | 1,842 | 1,832 | 1,836 | 1,839 | 1,828 |
| Juniors | 2,107 | 2,334 | 3,074 | 2,565 | 2,813 | 2,608 | 2,691 | 2,530 | 2,521 | 2,531 | 2,541 | 2,540 | 2,552 | 2,565 |
| Seniors | 4,005 | 4,243 | 3,132 | 4,619 | 4,603 | 4,725 | 4,635 | 4,644 | 4,554 | 4,509 | 4,499 | 4,508 | 4,521 | 4,543 |

TABLE 1 (cont.)

| | HISTORICAL | | | | | | | PROJECTED | | | | | | |
|-------------------------------------|------------|-------|-------|-------|-------|-------|-------|-----------|-------|-------|-------|-------|-------|-------|
| | 2001 | 2002 | 2003 | 2004 | 2005 | 2006 | 2007 | 2008 | 2009 | 2010 | 2011 | 2012 | 2013 | 2014 |
| Classified Graduates | 4,536 | 4,834 | 5,169 | 5,382 | 5,409 | 5,358 | 5,333 | 5,310 | 5,294 | 5,285 | 5,284 | 5,290 | 5,303 | 5,322 |
| Masters | 2,752 | 2,922 | 3,070 | 3,207 | 3,120 | 3,051 | 3,007 | 2,965 | 2,935 | 2,917 | 2,911 | 2,917 | 2,935 | 2,964 |
| Doctorate | 1,191 | 1,264 | 1,312 | 1,419 | 1,480 | 1,511 | 1,542 | 1,561 | 1,575 | 1,584 | 1,589 | 1,589 | 1,584 | 1,574 |
| First-Professional | 500 | 535 | 613 | 599 | 640 | 641 | 640 | 640 | 640 | 640 | 640 | 640 | 640 | 640 |
| Post-Baccalaureate | 63 | 86 | 131 | 119 | 135 | 109 | 101 | 101 | 101 | 101 | 101 | 101 | 101 | 101 |
| Graduate Special | 30 | 27 | 43 | 38 | 34 | 46 | 43 | 43 | 43 | 43 | 43 | 43 | 43 | 43 |
| Unclassified | 1,511 | 1,630 | 1,592 | 1,474 | 1,409 | 1,457 | 1,301 | 1,301 | 1,295 | 1,294 | 1,294 | 1,296 | 1,300 | 1,304 |
| Undergraduates 4/ | 569 | 588 | 574 | 508 | 475 | 452 | 366 | 370 | 368 | 368 | 368 | 369 | 370 | 371 |
| Graduates | 942 | 1,042 | 942 | 916 | 883 | 962 | 891 | 887 | 884 | 883 | 883 | 884 | 886 | 889 |
| Home-Based at Other UH Campus 5/ .. | | | 76 | 50 | 51 | 43 | 44 | 44 | 43 | 43 | 43 | 43 | 44 | 44 |

1/ Breakout by ed level has been adjusted for Fall 2004; counts may differ from information shown in other reports.

2/ Includes U.S. Possessions, Commonwealths and republics within the Compact of Free Association.

3/ Includes GED, students from Hawai'i who are not recent high school graduates and records with invalid data on high school.

4/ Includes records with invalid data on education level.

5/ Students whose Primary campus, as identified in Banner / ODS, is a UH campus other than UH M noa.

TABLE 2
HEADCOUNT ENROLLMENT OF CREDIT STUDENTS, BY COLLEGE
MIDDLE PROJECTION SERIES
UNIVERSITY OF HAWAI'I AT M NOA
FALL 2007 TO FALL 2014

| COLLEGE | ACTUAL | PROJECTED | | | | | | |
|---|--------|-----------|--------|--------|--------|--------|--------|--------|
| | 2007 | 2008 | 2009 | 2010 | 2011 | 2012 | 2013 | 2014 |
| Campus Total | 20,051 | 19,855 | 19,762 | 19,731 | 19,751 | 19,798 | 19,854 | 19,895 |
| Undergraduate Level | 13,827 | 13,658 | 13,584 | 13,563 | 13,584 | 13,624 | 13,665 | 13,684 |
| Lower Division 1/ | 5,248 | 5,246 | 5,255 | 5,252 | 5,257 | 5,273 | 5,273 | 5,241 |
| Upper Division | 8,579 | 8,412 | 8,329 | 8,311 | 8,327 | 8,351 | 8,392 | 8,443 |
| Graduate Level 2/ | 6,224 | 6,197 | 6,178 | 6,168 | 6,167 | 6,174 | 6,189 | 6,211 |
| Classified | 18,750 | 18,554 | 18,467 | 18,437 | 18,457 | 18,502 | 18,554 | 18,591 |
| Undergraduates | 13,417 | 13,244 | 13,173 | 13,152 | 13,173 | 13,212 | 13,251 | 13,269 |
| Lower Division | 4,838 | 4,832 | 4,844 | 4,841 | 4,846 | 4,861 | 4,859 | 4,826 |
| Upper Division | 8,579 | 8,412 | 8,329 | 8,311 | 8,327 | 8,351 | 8,392 | 8,443 |
| Graduates | 5,333 | 5,310 | 5,294 | 5,285 | 5,284 | 5,290 | 5,303 | 5,322 |
| Unclassified | 1,301 | 1,301 | 1,295 | 1,294 | 1,294 | 1,296 | 1,300 | 1,304 |
| Undergraduate (Lower Division) | 366 | 370 | 368 | 368 | 368 | 369 | 370 | 371 |
| Graduate Level | 891 | 887 | 884 | 883 | 883 | 884 | 886 | 889 |
| Home-Based at Other UH 3/ | 44 | 44 | 43 | 43 | 43 | 43 | 44 | 44 |
| COLLEGE OF ARTS & SCIENCES | 11,233 | 11,102 | 11,063 | 11,050 | 11,068 | 11,099 | 11,129 | 11,137 |
| Lower Division | 4,081 | 4,076 | 4,087 | 4,083 | 4,088 | 4,102 | 4,099 | 4,072 |
| Upper Division | 5,188 | 5,071 | 5,028 | 5,023 | 5,036 | 5,050 | 5,078 | 5,106 |
| Graduate Level | 1,964 | 1,955 | 1,948 | 1,944 | 1,944 | 1,947 | 1,952 | 1,959 |
| Arts & Humanities | 1,426 | 1,408 | 1,401 | 1,399 | 1,399 | 1,403 | 1,409 | 1,413 |
| Lower Division | 258 | 257 | 258 | 260 | 259 | 260 | 261 | 259 |
| Upper Division | 805 | 790 | 783 | 780 | 781 | 783 | 787 | 792 |
| Graduate Level | 363 | 361 | 360 | 359 | 359 | 360 | 361 | 362 |
| Languages, Ling & Lit | 1,053 | 1,041 | 1,037 | 1,035 | 1,035 | 1,038 | 1,040 | 1,044 |
| Lower Division | 184 | 184 | 184 | 184 | 184 | 185 | 184 | 183 |
| Upper Division | 464 | 454 | 451 | 450 | 450 | 452 | 454 | 457 |
| Graduate Level | 405 | 403 | 402 | 401 | 401 | 401 | 402 | 404 |
| Natural Sciences | 2,009 | 1,987 | 1,977 | 1,972 | 1,977 | 1,982 | 1,989 | 1,989 |
| Lower Division | 600 | 600 | 602 | 598 | 600 | 603 | 602 | 599 |
| Upper Division | 938 | 918 | 908 | 908 | 911 | 912 | 919 | 920 |
| Graduate Level | 471 | 469 | 467 | 466 | 466 | 467 | 468 | 470 |
| Social Sciences | 2,103 | 2,079 | 2,064 | 2,060 | 2,062 | 2,067 | 2,075 | 2,083 |
| Lower Division | 234 | 233 | 234 | 235 | 235 | 236 | 236 | 235 |
| Upper Division | 1,189 | 1,169 | 1,156 | 1,152 | 1,154 | 1,157 | 1,163 | 1,170 |
| Graduate Level | 680 | 677 | 674 | 673 | 673 | 674 | 676 | 678 |
| General Arts & Sciences | 4,455 | 4,400 | 4,400 | 4,401 | 4,412 | 4,425 | 4,432 | 4,423 |
| Lower Division | 2,799 | 2,796 | 2,803 | 2,800 | 2,804 | 2,812 | 2,810 | 2,790 |
| Upper Division | 1,656 | 1,604 | 1,597 | 1,601 | 1,608 | 1,613 | 1,622 | 1,633 |
| Other Arts & Sciences | 187 | 187 | 184 | 183 | 183 | 184 | 184 | 185 |
| Lower Division | 6 | 6 | 6 | 6 | 6 | 6 | 6 | 6 |
| Upper Division | 136 | 136 | 133 | 132 | 132 | 133 | 133 | 134 |
| Graduate Level | 45 | 45 | 45 | 45 | 45 | 45 | 45 | 45 |
| SCH OF HAWAIIAN KNOWLEDGE | 205 | 203 | 202 | 201 | 201 | 202 | 202 | 203 |
| Lower Division | 42 | 42 | 42 | 42 | 42 | 42 | 42 | 42 |
| Upper Division | 124 | 122 | 121 | 120 | 120 | 121 | 121 | 122 |
| Graduate Level | 39 | 39 | 39 | 39 | 39 | 39 | 39 | 39 |
| SCH OF PACIFIC & ASIAN ST | 196 | 195 | 193 | 193 | 193 | 193 | 193 | 195 |
| Lower Division | 24 | 24 | 24 | 24 | 24 | 24 | 24 | 24 |
| Upper Division | 79 | 78 | 77 | 77 | 77 | 77 | 77 | 78 |
| Graduate Level | 93 | 93 | 92 | 92 | 92 | 92 | 92 | 93 |

TABLE 2 (cont.)

| COLLEGE | ACTUAL | PROJECTED | | | | | | |
|-------------------------------------|--------|-----------|-------|-------|-------|-------|-------|-------|
| | 2007 | 2008 | 2009 | 2010 | 2011 | 2012 | 2013 | 2014 |
| SCH OF OCEAN & EARTH SCI TECH.. | 330 | 328 | 326 | 326 | 326 | 326 | 327 | 329 |
| Lower Division | 49 | 49 | 49 | 49 | 49 | 49 | 49 | 49 |
| Upper Division | 77 | 76 | 75 | 75 | 75 | 75 | 75 | 76 |
| Graduate Level | 204 | 203 | 202 | 202 | 202 | 202 | 203 | 204 |
| SCHOOL OF ARCHITECTURE | 282 | 280 | 279 | 278 | 279 | 279 | 280 | 279 |
| Lower Division | 54 | 54 | 54 | 54 | 54 | 54 | 54 | 53 |
| Upper Division | 104 | 102 | 101 | 100 | 101 | 101 | 102 | 102 |
| 1st Professional (ArchD) | 124 | 124 | 124 | 124 | 124 | 124 | 124 | 124 |
| COLLEGE OF BUSINESS ADMIN | 1,178 | 1,167 | 1,156 | 1,150 | 1,150 | 1,154 | 1,158 | 1,164 |
| Lower Division | 6 | 6 | 6 | 6 | 6 | 6 | 6 | 6 |
| Upper Division | 789 | 779 | 769 | 765 | 765 | 768 | 771 | 776 |
| Graduate Level | 383 | 382 | 381 | 379 | 379 | 380 | 381 | 382 |
| Masters Degrees | 355 | 354 | 353 | 351 | 351 | 352 | 353 | 354 |
| PhD Program | 28 | 28 | 28 | 28 | 28 | 28 | 28 | 28 |
| SCH OF TRAVEL INDUSTRY MGT | 434 | 428 | 425 | 424 | 424 | 425 | 428 | 429 |
| Lower Division | 88 | 88 | 88 | 88 | 88 | 88 | 89 | 88 |
| Upper Division | 331 | 325 | 322 | 321 | 321 | 322 | 324 | 326 |
| Graduate Level | 15 | 15 | 15 | 15 | 15 | 15 | 15 | 15 |
| COLLEGE OF EDUCATION | 1,526 | 1,514 | 1,505 | 1,501 | 1,499 | 1,503 | 1,506 | 1,515 |
| Lower Division | 7 | 7 | 7 | 7 | 7 | 7 | 7 | 7 |
| Upper Division | 463 | 458 | 452 | 450 | 449 | 451 | 452 | 455 |
| Graduate Level | 955 | 948 | 945 | 943 | 942 | 944 | 946 | 952 |
| Post Baccalaureate | 101 | 101 | 101 | 101 | 101 | 101 | 101 | 101 |
| COLLEGE OF ENGINEERING | 953 | 942 | 938 | 936 | 938 | 939 | 942 | 944 |
| Lower Division | 281 | 280 | 281 | 282 | 282 | 282 | 282 | 280 |
| Upper Division | 496 | 487 | 482 | 480 | 482 | 483 | 485 | 488 |
| Graduate Level | 176 | 175 | 175 | 174 | 174 | 174 | 175 | 176 |
| COLLEGE OF TROP AG & HUM RES .. | 839 | 830 | 824 | 823 | 823 | 826 | 829 | 830 |
| Lower Division | 159 | 159 | 159 | 159 | 159 | 160 | 160 | 158 |
| Upper Division | 463 | 455 | 450 | 449 | 449 | 451 | 453 | 456 |
| Graduate Level | 217 | 216 | 215 | 215 | 215 | 215 | 216 | 216 |
| SCHOOL OF MEDICINE | 485 | 483 | 481 | 482 | 482 | 482 | 483 | 484 |
| Lower Division | 3 | 3 | 3 | 3 | 3 | 3 | 3 | 3 |
| Upper Division | 58 | 57 | 56 | 57 | 57 | 57 | 57 | 57 |
| Graduate Level | 181 | 180 | 179 | 179 | 179 | 179 | 180 | 181 |
| 1st Professional (MD) | 243 | 243 | 243 | 243 | 243 | 243 | 243 | 243 |
| SCHOOL OF NURSING | 537 | 532 | 527 | 525 | 526 | 526 | 527 | 531 |
| Lower Division | 42 | 42 | 42 | 42 | 42 | 42 | 42 | 42 |
| Upper Division | 359 | 355 | 350 | 348 | 349 | 349 | 350 | 353 |
| Graduate Level | 136 | 135 | 135 | 135 | 135 | 135 | 135 | 136 |
| SCHOOL OF SOCIAL WORK | 266 | 264 | 262 | 262 | 262 | 262 | 264 | 265 |
| Lower Division | 2 | 2 | 2 | 2 | 2 | 2 | 2 | 2 |
| Upper Division | 48 | 47 | 46 | 46 | 46 | 46 | 47 | 48 |
| Graduate Level | 216 | 215 | 214 | 214 | 214 | 214 | 215 | 215 |
| SCHOOL OF LAW | 287 | 287 | 287 | 287 | 287 | 287 | 287 | 287 |
| 1st Professional | 273 | 273 | 273 | 273 | 273 | 273 | 273 | 273 |
| Master in Law | 13 | 13 | 13 | 13 | 13 | 13 | 13 | 13 |
| Pre-Law, Non-Degree (Unclass) | 1 | 1 | 1 | 1 | 1 | 1 | 1 | 1 |

1/ Includes Unclassified Undergraduates and records with invalid data on education level.

2/ Includes Unclassified Graduates.

3/ Students whose Primary campus, as identified in Banner / ODS, is a UH campus other than UH Manoa.

TABLE 3
STUDENT SEMESTER HOURS OFFERED, BY COLLEGE
MIDDLE PROJECTION SERIES
UNIVERSITY OF HAWAI'I AT M NOA
FALL 2007 TO FALL 2014

| COLLEGE | ACTUAL | PROJECTED | | | | | | |
|----------------------------------|---------|-----------|---------|---------|---------|---------|---------|---------|
| | 2007 | 2008 | 2009 | 2010 | 2011 | 2012 | 2013 | 2014 |
| TOTAL | 228,057 | 225,780 | 224,709 | 224,365 | 224,627 | 225,185 | 225,781 | 226,142 |
| Lower Division | 98,166 | 97,334 | 97,151 | 97,062 | 97,213 | 97,486 | 97,654 | 97,474 |
| Upper Division | 87,742 | 86,434 | 85,655 | 85,457 | 85,572 | 85,817 | 86,158 | 86,586 |
| Graduate Level | 42,149 | 42,012 | 41,903 | 41,846 | 41,842 | 41,882 | 41,969 | 42,082 |
| COLLEGE OF ARTS & SCIENCES 1/ .. | 132,086 | 130,678 | 130,155 | 130,001 | 130,186 | 130,553 | 130,897 | 130,966 |
| Lower Division | 76,258 | 75,618 | 75,486 | 75,427 | 75,542 | 75,762 | 75,891 | 75,733 |
| Upper Division | 44,433 | 43,712 | 43,366 | 43,293 | 43,362 | 43,492 | 43,676 | 43,864 |
| Graduate Level | 11,395 | 11,348 | 11,303 | 11,281 | 11,282 | 11,299 | 11,330 | 11,369 |
| Arts & Humanities | 30,131 | 29,805 | 29,688 | 29,650 | 29,685 | 29,775 | 29,855 | 29,873 |
| Lower Division | 16,245 | 16,119 | 16,096 | 16,090 | 16,107 | 16,158 | 16,182 | 16,140 |
| Upper Division | 12,099 | 11,907 | 11,819 | 11,792 | 11,810 | 11,844 | 11,895 | 11,950 |
| Graduate Level | 1,787 | 1,779 | 1,773 | 1,768 | 1,768 | 1,773 | 1,778 | 1,783 |
| Languages, Ling & Lit | 31,666 | 31,319 | 31,191 | 31,151 | 31,188 | 31,279 | 31,361 | 31,401 |
| Lower Division | 18,406 | 18,236 | 18,187 | 18,169 | 18,195 | 18,249 | 18,288 | 18,272 |
| Upper Division | 10,827 | 10,661 | 10,589 | 10,572 | 10,583 | 10,620 | 10,657 | 10,701 |
| Graduate Level | 2,433 | 2,422 | 2,415 | 2,410 | 2,410 | 2,410 | 2,416 | 2,428 |
| Natural Sciences | 32,399 | 32,081 | 31,982 | 31,952 | 32,009 | 32,092 | 32,167 | 32,135 |
| Lower Division | 24,214 | 24,007 | 23,970 | 23,946 | 23,989 | 24,056 | 24,095 | 24,039 |
| Upper Division | 5,578 | 5,478 | 5,428 | 5,426 | 5,439 | 5,451 | 5,481 | 5,495 |
| Graduate Level | 2,607 | 2,596 | 2,584 | 2,580 | 2,581 | 2,585 | 2,591 | 2,601 |
| Social Sciences 1/ | 36,309 | 35,905 | 35,732 | 35,689 | 35,742 | 35,841 | 35,947 | 35,990 |
| Lower Division | 16,535 | 16,403 | 16,380 | 16,371 | 16,399 | 16,445 | 16,472 | 16,430 |
| Upper Division | 15,393 | 15,138 | 15,008 | 14,981 | 15,006 | 15,052 | 15,117 | 15,190 |
| Graduate Level | 4,381 | 4,364 | 4,344 | 4,337 | 4,337 | 4,344 | 4,358 | 4,370 |
| Other Arts & Sciences | 1,581 | 1,568 | 1,562 | 1,559 | 1,562 | 1,566 | 1,567 | 1,567 |
| Lower Division | 858 | 853 | 853 | 851 | 852 | 854 | 854 | 852 |
| Upper Division | 536 | 528 | 522 | 522 | 524 | 525 | 526 | 528 |
| Graduate Level | 187 | 187 | 187 | 186 | 186 | 187 | 187 | 187 |
| SCH OF HAWN KNOWLEDGE | 7,452 | 7,397 | 7,380 | 7,364 | 7,376 | 7,394 | 7,397 | 7,390 |
| Lower Division | 5,538 | 5,505 | 5,505 | 5,491 | 5,498 | 5,511 | 5,511 | 5,498 |
| Upper Division | 1,500 | 1,478 | 1,461 | 1,461 | 1,466 | 1,469 | 1,472 | 1,478 |
| Graduate Level | 414 | 414 | 414 | 412 | 412 | 414 | 414 | 414 |
| SCH OF PACIFIC & ASIAN ST | 1,551 | 1,537 | 1,526 | 1,525 | 1,526 | 1,529 | 1,531 | 1,540 |
| Lower Division | 447 | 444 | 440 | 440 | 440 | 441 | 441 | 445 |
| Upper Division | 772 | 761 | 757 | 756 | 757 | 759 | 761 | 763 |
| Graduate Level | 332 | 332 | 329 | 329 | 329 | 329 | 329 | 332 |
| SCH OF OCEAN & EARTH SCI TECH . | 4,322 | 4,292 | 4,278 | 4,275 | 4,279 | 4,285 | 4,295 | 4,303 |
| Lower Division | 1,943 | 1,933 | 1,931 | 1,928 | 1,931 | 1,937 | 1,940 | 1,935 |
| Upper Division | 939 | 926 | 920 | 920 | 921 | 921 | 922 | 928 |
| Graduate Level | 1,440 | 1,433 | 1,427 | 1,427 | 1,427 | 1,427 | 1,433 | 1,440 |
| SCHOOL OF ARCHITECTURE | 2,683 | 2,665 | 2,656 | 2,648 | 2,656 | 2,657 | 2,665 | 2,660 |
| Lower Division | 833 | 828 | 826 | 824 | 826 | 827 | 828 | 823 |
| Upper Division | 843 | 831 | 825 | 819 | 825 | 825 | 831 | 831 |
| Graduate Level | 1,007 | 1,006 | 1,005 | 1,005 | 1,005 | 1,005 | 1,006 | 1,006 |

TABLE 3 (cont.)

| COLLEGE | ACTUAL | PROJECTED | | | | | | |
|----------------------------------|--------|-----------|--------|--------|--------|--------|--------|--------|
| | 2007 | 2008 | 2009 | 2010 | 2011 | 2012 | 2013 | 2014 |
| COLLEGE OF BUSINESS ADMIN | 15,842 | 15,671 | 15,533 | 15,472 | 15,480 | 15,535 | 15,587 | 15,659 |
| Lower Division | 2,784 | 2,747 | 2,734 | 2,732 | 2,738 | 2,747 | 2,756 | 2,758 |
| Upper Division | 9,818 | 9,693 | 9,576 | 9,533 | 9,535 | 9,572 | 9,607 | 9,669 |
| Graduate Level | 3,240 | 3,231 | 3,223 | 3,207 | 3,207 | 3,216 | 3,224 | 3,232 |
| SCH OF TRAVEL INDUSTRY MGT | 3,632 | 3,580 | 3,553 | 3,546 | 3,546 | 3,555 | 3,577 | 3,590 |
| Lower Division | 771 | 764 | 761 | 762 | 762 | 763 | 768 | 766 |
| Upper Division | 2,760 | 2,715 | 2,691 | 2,683 | 2,683 | 2,691 | 2,708 | 2,723 |
| Graduate Level | 101 | 101 | 101 | 101 | 101 | 101 | 101 | 101 |
| COLLEGE OF EDUCATION | 18,416 | 18,251 | 18,134 | 18,091 | 18,085 | 18,135 | 18,182 | 18,267 |
| Lower Division | 2,175 | 2,151 | 2,143 | 2,140 | 2,143 | 2,147 | 2,154 | 2,157 |
| Upper Division | 9,902 | 9,800 | 9,709 | 9,682 | 9,678 | 9,712 | 9,739 | 9,788 |
| Graduate Level | 6,339 | 6,300 | 6,282 | 6,269 | 6,264 | 6,276 | 6,289 | 6,322 |
| COLLEGE OF ENGINEERING | 6,504 | 6,410 | 6,366 | 6,344 | 6,363 | 6,372 | 6,396 | 6,428 |
| Lower Division | 1,135 | 1,121 | 1,118 | 1,118 | 1,120 | 1,121 | 1,123 | 1,123 |
| Upper Division | 4,465 | 4,390 | 4,350 | 4,332 | 4,349 | 4,357 | 4,375 | 4,401 |
| Graduate Level | 904 | 899 | 898 | 894 | 894 | 894 | 898 | 904 |
| COLLEGE OF TROP AG & HUM RES ... | 11,952 | 11,800 | 11,728 | 11,715 | 11,730 | 11,764 | 11,801 | 11,826 |
| Lower Division | 4,241 | 4,203 | 4,192 | 4,188 | 4,197 | 4,210 | 4,218 | 4,212 |
| Upper Division | 6,543 | 6,434 | 6,377 | 6,368 | 6,374 | 6,395 | 6,420 | 6,451 |
| Graduate Level | 1,168 | 1,163 | 1,159 | 1,159 | 1,159 | 1,159 | 1,163 | 1,163 |
| SCHOOL OF MEDICINE | 11,805 | 11,753 | 11,724 | 11,728 | 11,734 | 11,740 | 11,758 | 11,772 |
| Lower Division | 1,675 | 1,658 | 1,656 | 1,654 | 1,657 | 1,661 | 1,664 | 1,663 |
| Upper Division | 1,481 | 1,455 | 1,440 | 1,446 | 1,449 | 1,451 | 1,456 | 1,461 |
| Graduate Level | 8,649 | 8,640 | 8,628 | 8,628 | 8,628 | 8,628 | 8,638 | 8,648 |
| SCHOOL OF NURSING | 4,911 | 4,865 | 4,814 | 4,794 | 4,803 | 4,803 | 4,814 | 4,850 |
| Lower Division | 210 | 208 | 205 | 204 | 204 | 204 | 205 | 206 |
| Upper Division | 3,839 | 3,801 | 3,753 | 3,734 | 3,743 | 3,743 | 3,753 | 3,782 |
| Graduate Level | 862 | 856 | 856 | 856 | 856 | 856 | 856 | 862 |
| SCHOOL OF SOCIAL WORK | 2,748 | 2,728 | 2,709 | 2,709 | 2,710 | 2,710 | 2,728 | 2,738 |
| Lower Division | 156 | 154 | 154 | 154 | 155 | 155 | 155 | 155 |
| Upper Division | 447 | 438 | 430 | 430 | 430 | 430 | 438 | 447 |
| Graduate Level | 2,145 | 2,136 | 2,125 | 2,125 | 2,125 | 2,125 | 2,135 | 2,136 |
| SCHOOL OF LAW | 4,153 | 4,153 | 4,153 | 4,153 | 4,153 | 4,153 | 4,153 | 4,153 |
| Graduate Level | 4,153 | 4,153 | 4,153 | 4,153 | 4,153 | 4,153 | 4,153 | 4,153 |

1/ Military Studies is included with Social Sciences, College of Arts & Sciences.

TABLE 4 (cont.)

| COLLEGE | ACTUAL | PROJECTED | | | | | | |
|----------------------------------|--------|-----------|-------|-------|-------|-------|-------|-------|
| | 2007 | 2008 | 2009 | 2010 | 2011 | 2012 | 2013 | 2014 |
| COLLEGE OF BUSINESS ADMIN | 1,108 | 1,098 | 1,089 | 1,085 | 1,086 | 1,089 | 1,093 | 1,098 |
| Lower Division | 185 | 183 | 182 | 182 | 183 | 183 | 184 | 184 |
| Upper Division | 653 | 646 | 638 | 636 | 636 | 638 | 640 | 645 |
| Graduate Level | 270 | 269 | 269 | 267 | 267 | 268 | 269 | 269 |
| SCH OF TRAVEL INDUSTRY MGT | 243 | 240 | 238 | 238 | 238 | 238 | 240 | 241 |
| Lower Division | 51 | 51 | 51 | 51 | 51 | 51 | 51 | 51 |
| Upper Division | 184 | 181 | 179 | 179 | 179 | 179 | 181 | 182 |
| Graduate Level | 8 | 8 | 8 | 8 | 8 | 8 | 8 | 8 |
| COLLEGE OF EDUCATION | 1,334 | 1,321 | 1,314 | 1,310 | 1,310 | 1,313 | 1,317 | 1,324 |
| Lower Division | 145 | 143 | 143 | 143 | 143 | 143 | 144 | 144 |
| Upper Division | 660 | 653 | 647 | 645 | 645 | 647 | 649 | 653 |
| Graduate Level | 529 | 525 | 524 | 522 | 522 | 523 | 524 | 527 |
| COLLEGE OF ENGINEERING | 450 | 443 | 440 | 439 | 440 | 440 | 442 | 443 |
| Lower Division | 76 | 75 | 75 | 75 | 75 | 75 | 75 | 75 |
| Upper Division | 299 | 293 | 290 | 289 | 290 | 290 | 292 | 293 |
| Graduate Level | 75 | 75 | 75 | 75 | 75 | 75 | 75 | 75 |
| COLLEGE OF TROP AG & HUM RES ... | 816 | 806 | 801 | 801 | 802 | 804 | 806 | 808 |
| Lower Division | 282 | 280 | 279 | 279 | 280 | 281 | 281 | 281 |
| Upper Division | 435 | 429 | 425 | 425 | 425 | 426 | 428 | 430 |
| Graduate Level | 99 | 97 | 97 | 97 | 97 | 97 | 97 | 97 |
| SCHOOL OF MEDICINE | 930 | 928 | 925 | 925 | 926 | 927 | 928 | 929 |
| Lower Division | 112 | 111 | 110 | 110 | 110 | 111 | 111 | 111 |
| Upper Division | 98 | 97 | 96 | 96 | 97 | 97 | 97 | 97 |
| Graduate Level | 720 | 720 | 719 | 719 | 719 | 719 | 720 | 721 |
| SCHOOL OF NURSING | 342 | 338 | 335 | 334 | 335 | 335 | 335 | 338 |
| Lower Division | 14 | 14 | 14 | 14 | 14 | 14 | 14 | 14 |
| Upper Division | 256 | 253 | 250 | 249 | 250 | 250 | 250 | 252 |
| Graduate Level | 72 | 71 | 71 | 71 | 71 | 71 | 71 | 72 |
| SCHOOL OF SOCIAL WORK | 219 | 217 | 216 | 216 | 216 | 216 | 217 | 218 |
| Lower Division | 10 | 10 | 10 | 10 | 10 | 10 | 10 | 10 |
| Upper Division | 30 | 29 | 29 | 29 | 29 | 29 | 29 | 30 |
| Graduate Level | 179 | 178 | 177 | 177 | 177 | 177 | 178 | 178 |
| SCHOOL OF LAW | 346 | 346 | 346 | 346 | 346 | 346 | 346 | 346 |
| Graduate Level | 346 | 346 | 346 | 346 | 346 | 346 | 346 | 346 |

1/ Military Studies is included with Social Sciences, College of Arts & Sciences.

TABLE 5
HEADCOUNT ENROLLMENT OF CREDIT STUDENTS, BY ATTENDANCE STATUS
MIDDLE PROJECTION SERIES
UNIVERSITY OF HAWAI'I AT M NOA
FALL 2007 TO FALL 2014

| ATTENDANCE STATUS | ACTUAL | PROJECTED | | | | | | |
|-------------------------|--------|-----------|--------|--------|--------|--------|--------|--------|
| | 2007 | 2008 | 2009 | 2010 | 2011 | 2012 | 2013 | 2014 |
| TOTAL | 20,051 | 19,855 | 19,762 | 19,731 | 19,751 | 19,798 | 19,854 | 19,895 |
| Full-time..... | 14,318 | 14,205 | 14,138 | 14,116 | 14,129 | 14,163 | 14,203 | 14,233 |
| Lower Division | 4,595 | 4,607 | 4,585 | 4,578 | 4,582 | 4,593 | 4,606 | 4,616 |
| Upper Division | 6,688 | 6,575 | 6,544 | 6,534 | 6,540 | 6,556 | 6,574 | 6,588 |
| Graduate Level | 3,035 | 3,023 | 3,009 | 3,004 | 3,007 | 3,014 | 3,023 | 3,029 |
| Part-time | 5,733 | 5,650 | 5,624 | 5,615 | 5,622 | 5,635 | 5,651 | 5,662 |
| Lower Division 1/ | 653 | 645 | 642 | 641 | 643 | 644 | 646 | 647 |
| Upper Division | 1,891 | 1,864 | 1,856 | 1,853 | 1,855 | 1,859 | 1,864 | 1,868 |
| Graduate Level | 3,189 | 3,141 | 3,126 | 3,121 | 3,124 | 3,132 | 3,141 | 3,147 |

1/ Includes records with invalid data on education level.

Lower Division = Freshmen, Sophomores & Unclassified Undergraduate students.

Upper Division = Juniors & Seniors

APPENDIX A
HAWAI'I PUBLIC HIGH SCHOOL SENIORS, BY SCHOOL DISTRICT
ACADEMIC YEARS 2000-01 TO 2013-14

| SCHOOL DISTRICT | HISTORICAL 1/ | | | | | | | | PROJECTED 2/ | | | | | |
|---------------------------------|---------------|---------|---------|---------|---------|---------|---------|---------|--------------|---------|---------|---------|---------|---------|
| | 2000-01 | 2001-02 | 2002-03 | 2003-04 | 2004-05 | 2005-06 | 2006-07 | 2007-08 | 2008-09 | 2009-10 | 2010-11 | 2011-12 | 2012-13 | 2013-14 |
| TOTAL | 9,232 | 9,457 | 9,052 | 9,197 | 9,362 | 9,472 | 9,289 | 9,819 | 9,870 | 9,625 | 9,714 | 9,710 | 9,548 | 9,186 |
| O'ahu Districts | 5,860 | 6,012 | 5,695 | 5,815 | 5,883 | 6,189 | 6,033 | 6,370 | 6,210 | 6,155 | 6,112 | 6,229 | 5,960 | 5,706 |
| Honolulu District | 1,743 | 1,791 | 1,642 | 1,600 | 1,661 | 1,689 | 1,656 | 1,664 | 1,707 | 1,571 | 1,564 | 1,616 | 1,540 | 1,484 |
| Central District | 1,596 | 1,714 | 1,664 | 1,611 | 1,643 | 1,715 | 1,746 | 1,699 | 1,660 | 1,717 | 1,780 | 1,791 | 1,745 | 1,622 |
| Leeward District | 1,502 | 1,519 | 1,455 | 1,683 | 1,716 | 1,852 | 1,833 | 2,157 | 2,053 | 2,141 | 2,021 | 1,984 | 2,006 | 1,913 |
| Windward District | 1,019 | 988 | 934 | 921 | 863 | 933 | 798 | 850 | 790 | 726 | 747 | 838 | 669 | 687 |
| Neighbor Island Districts | 3,372 | 3,323 | 3,227 | 3,207 | 3,314 | 3,107 | 3,073 | 3,225 | 3,393 | 3,165 | 3,282 | 3,056 | 3,008 | 3,179 |
| Hawai'i District | 1,589 | 1,538 | 1,529 | 1,514 | 1,527 | 1,442 | 1,416 | 1,474 | 1,502 | 1,492 | 1,468 | 1,357 | 1,320 | 1,470 |
| Maui District | 1,186 | 1,174 | 1,159 | 1,111 | 1,173 | 1,048 | 1,112 | 1,159 | 1,223 | 1,123 | 1,204 | 1,113 | 1,128 | 1,114 |
| Kaua'i District | 597 | 611 | 539 | 582 | 614 | 617 | 545 | 592 | 668 | 550 | 610 | 586 | 560 | 595 |
| Other Schools | | 122 | 130 | 175 | 165 | 176 | 183 | 224 | 267 | 305 | 320 | 425 | 580 | 301 |
| Charter Schools 3/ | | 122 | 130 | 175 | 165 | 176 | 183 | 224 | 267 | 305 | 320 | 425 | 580 | 301 |

1/ Department of Education for the State of Hawai'i. Regular Education seniors only.

2/ Department of Education, "Statewide Enrollment Projections, 2008-09 to 2013-14," May 2008.

3/ Includes all districts.

