

ENROLLMENT PROJECTIONS
UNIVERSITY OF HAWAI'I - WEST O'AHU
FALL 2006 TO FALL 2012

Institutional Research Office
University of Hawai'i
July 2006

File Reference: Management and Planning Support Folder, Projections

Reports available online at: <http://www.hawaii.edu/iro/maps.htm>

ENROLLMENT PROJECTIONS UNIVERSITY OF HAWAI'I-WEST O'AHU FALL 2006 TO FALL 2012

INTRODUCTION

This report presents information on actual and projected headcount enrollment for the University of Hawai'i-West O'ahu. **The projections are statistical extrapolations of current trends in enrollment. They do not set enrollment targets and, in general, do not take into consideration planned or potential changes in University policies or procedures. They should be considered as an extension into the future of current enrollment trends, and may be used as a foundation for further work in planning and budgeting. Please note that potential lower division enrollment is not included.**

The enrollment projections are unduplicated headcounts of students enrolled in credit programs. Counts include both those students enrolled in degree programs as well as unclassified students. Counts also include both on-campus as well as distance education enrollments. Historical data are included in the charts and tables to facilitate comparison and analysis. They were extracted from student enrollment, academic crossover and course registration data files.

METHODOLOGY

The projections are organized by registration status: transfer, returning and continuing students (UH-West O'ahu does not enroll first-time students). Within these registration status categories, the enrollment projections are subdivided by education level: junior and senior. Beginning with the Fall 2006 report, unclassified enrollment has been separated from classified enrollment and forecast independently. The projection report offers three projection series - high, middle and low. The separate series were produced by varying the input values used in the model from among the range of available values. Otherwise, the same general methodology is employed for all three series.

As the only source of new students for the campus, **transfer** enrollment drives growth in the projection model. Classified transfer enrollment has been forecast using trends: the Middle series uses the trend measured from Fall 1993 to 2005; the Low series from 1981 to 2005; the High series from Fall 1985 to 2005. Distribution by education level has been made using two-year historical average ratios. The use of trend data gives classified transfers a mild upward bias (Figure 5).

Returning students are previously enrolled students who have been absent for at least one semester (excluding summers) without having attended another institution in the interim. They are generally considered to be entering students. Total returning enrollment has been forecast using trends for the Middle and High series, while the Low series has been set to a constant (Figure 6). The total number of returning students, however, is small in absolute terms.

Continuing senior enrollment has been forecast using continuation rates. In general, a continuation rate is the ratio of continuing enrollment at a given education level to the

previous fall semester's total enrollment at the next lower level. In this report, continuing seniors have been forecast using the ratio of continuing seniors to the sum of the previous fall semester's total classified enrollment. Continuing junior enrollment has been forecast for the Middle and High series using trends, as measured from Fall 1988 to 2005 and Fall 1995 to 2005, respectively. The Low series has been set to a constant.

Unclassified enrollment has been set to constants for all three projection series. Students who are home-based at other UH institutions are included here for the first time (Table 2). These are students whose primary campus, as identified in the Banner registration system, is a UH institution other than UH-West O'ahu. In Fall 2005, the number of these students was small and declining. However, there is as yet insufficient data to establish a trend.

In addition to the High, Middle and Low enrollment projection series given in Table 1, additional tables provide detail. **The data in all subsequent tables are based upon the middle projection series presented in Table 1.** Table 2 presents seven years of historical data and detailed forecasts by registration status and education level. Table 3 presents headcount enrollment by program. Student semester hours (SSH) offered are shown in Table 4 and full-time equivalent (FTE) course enrollments are given in Table 5. Tables 3, 4 and 5 utilize Fall 2005 data plus the projected enrollments for Fall 2006 to Fall 2012 as inputs, then forecast the counts by program using the Fall 2005 distribution ratios. Headcount enrollment by attendance status is provided in Table 6. Distribution between full-time and part-time is based upon the two-year average proportions.

ANALYSIS AND DISCUSSION

- Headcount enrollment at the University of Hawai'i-West O'ahu measured 858 in Fall 2005 a 2.9% increase over Fall 2004 (Table 2 and Figure 1). This enrollment was the second consecutive fall semester of 3% growth and marked a new all-time high in headcount enrollment for the campus. Enrollment (Middle series) is forecast to increase by 1.7% in Fall 2006 to reach 873 students, and to grow through Fall 2012 at an average annual rate of 1.1%. Resource limitations are expected to restrain growth in on-campus enrollments, with greater growth potential in the distance education programs.
- The two alternate projection series allow for somewhat more robust growth on the high side and mild decline on the low side (Table 1 and Figure 3). The high series forecasts a 4.1% increase in Fall 2006 and growth through Fall 2012 at an average annual rate of 1.9%. The low series shows enrollment declining 2.9% in Fall 2006, with further slight decline through Fall 2008 and slow growth thereafter.
- Since the founding of the campus in 1977, enrollment at UH-West O'ahu has had a strong upward growth trend (Figure 4). Unlike prior years, however, the enrollment forecast now lies well below this long-term trend line. In general, resource constraints will impede further growth in campus enrollment. Furthermore, as a small campus, enrollment may be highly sensitive to campus policies and practices on admissions, as well as a variety of other factors. As there seems to be no lack of demand for services in the Leeward and Ewa areas, concern in the near future may focus on the securing of additional resources.

University of Hawai'i - West O'ahu
Enrollment Projections of Credit Students

Figure 1
Historical & Projected Headcount Enrollment

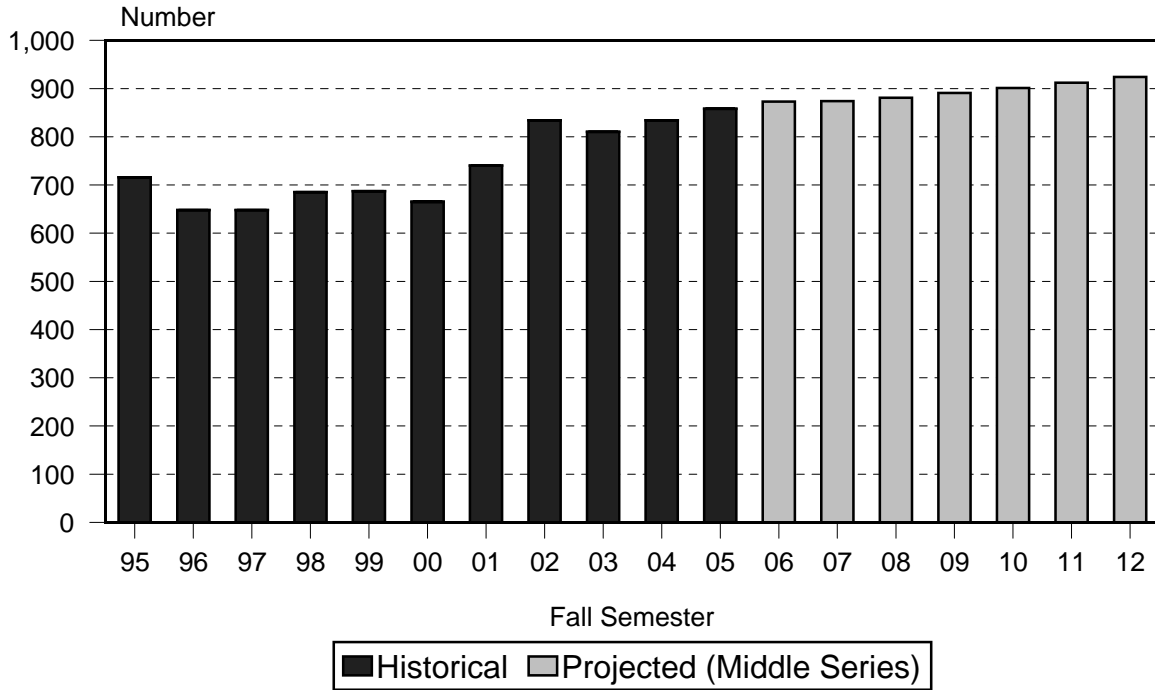
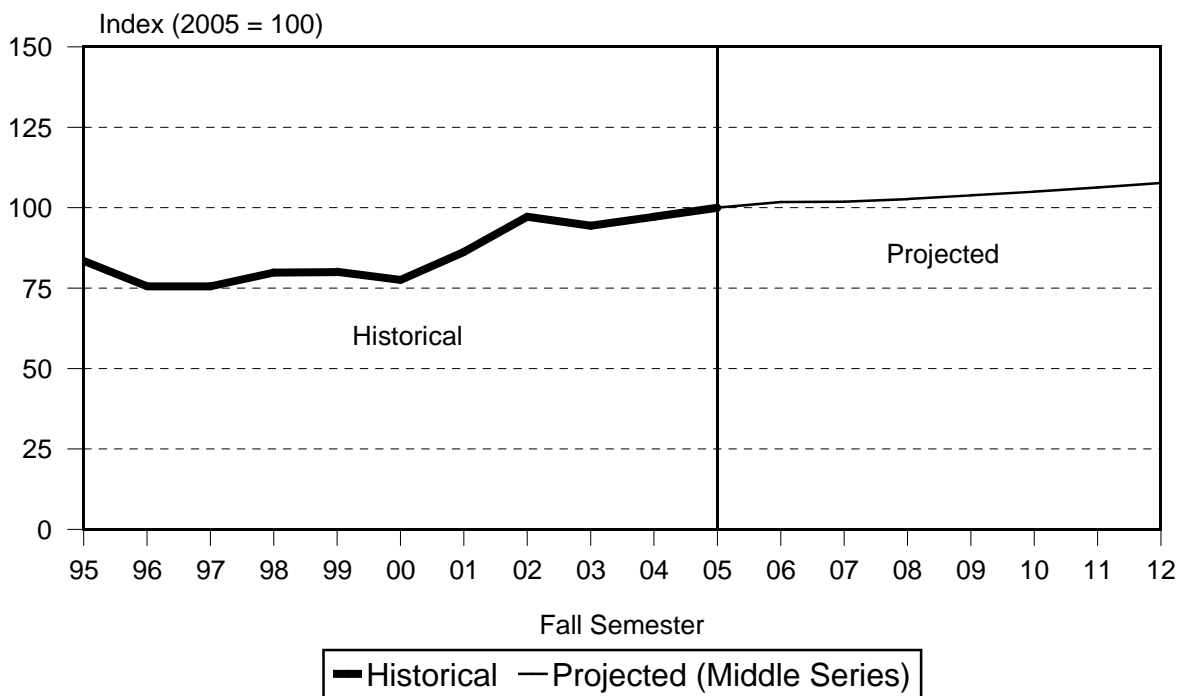


Figure 2
Enrollment Index



University of Hawai'i - West O'ahu
 Enrollment Projections of Credit Students

Figure 3
 High, Middle and Low Projection Series

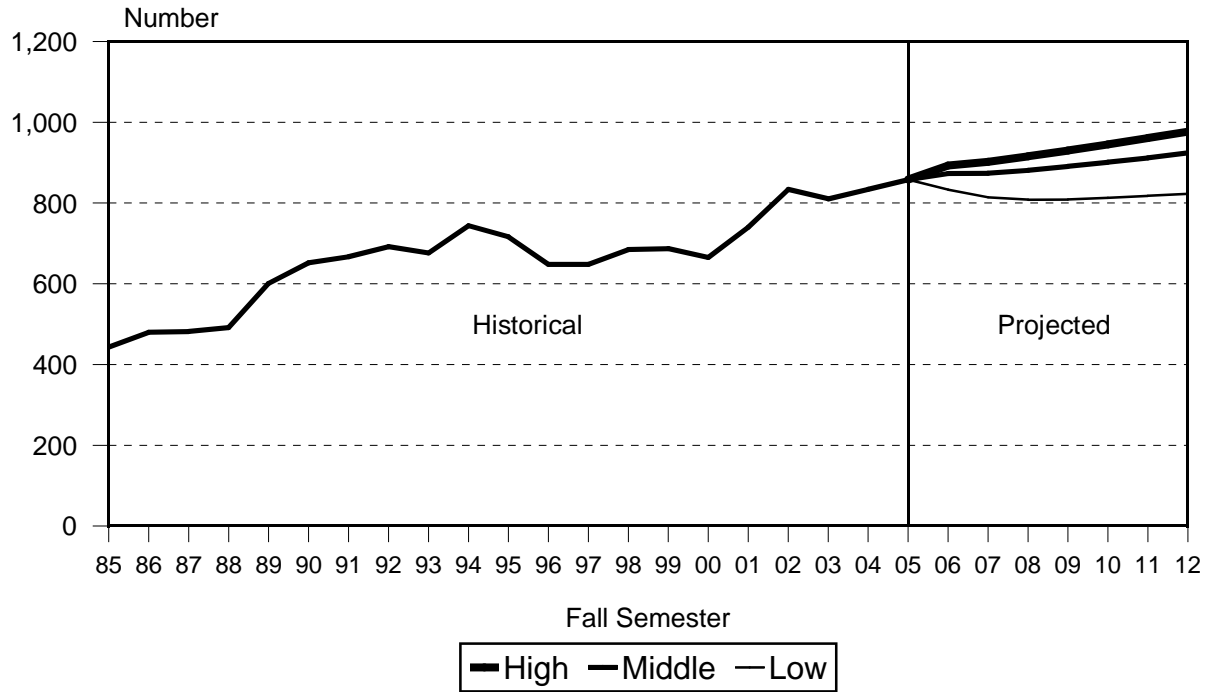
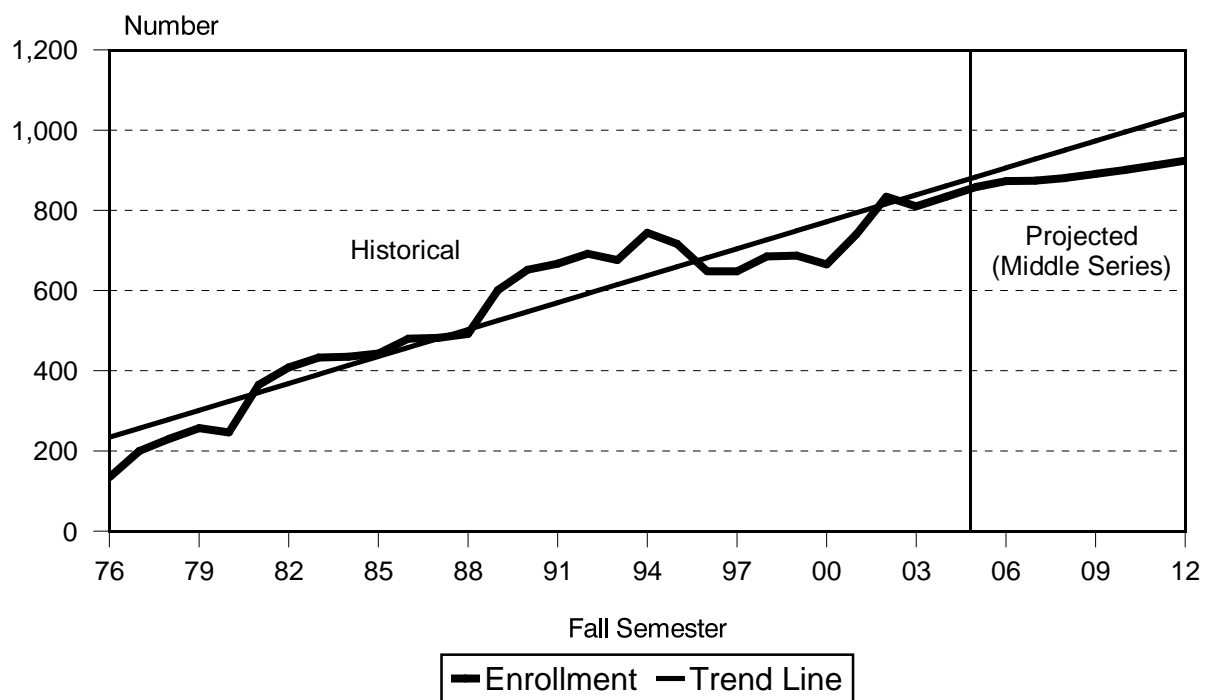


Figure 4
 Historical Enrollment with Trend Line



University of Hawai'i - West O'ahu
Enrollment Projections of Credit Students

Figure 5
Classified Transfer Enrollment

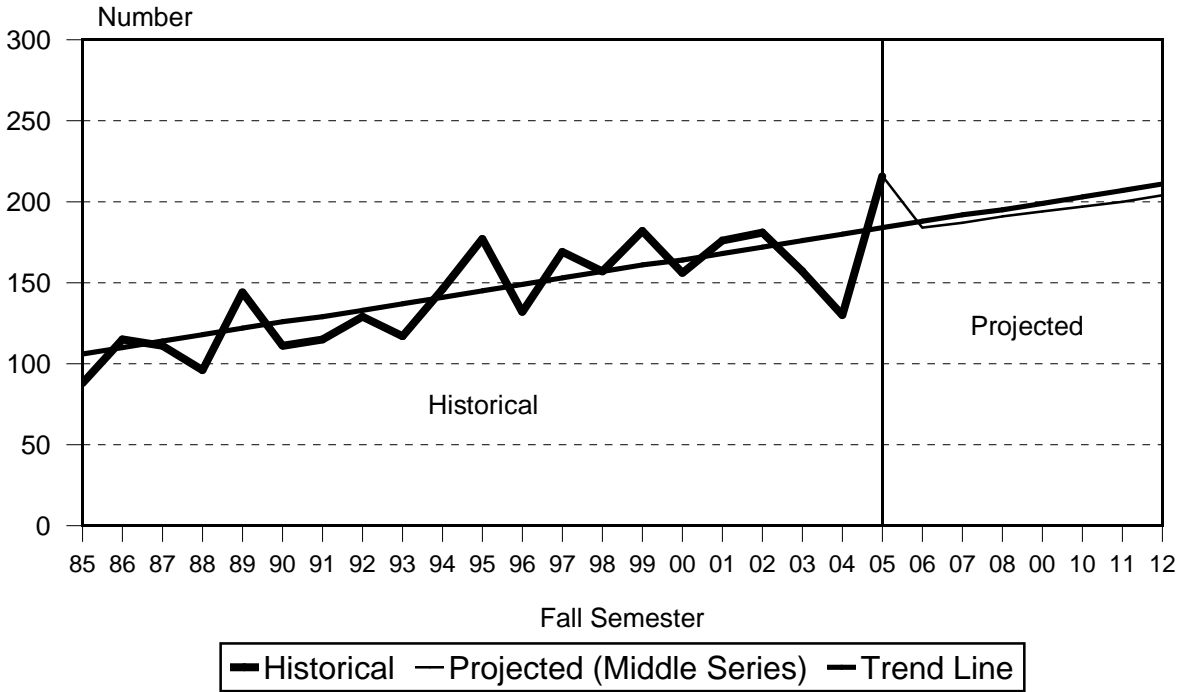
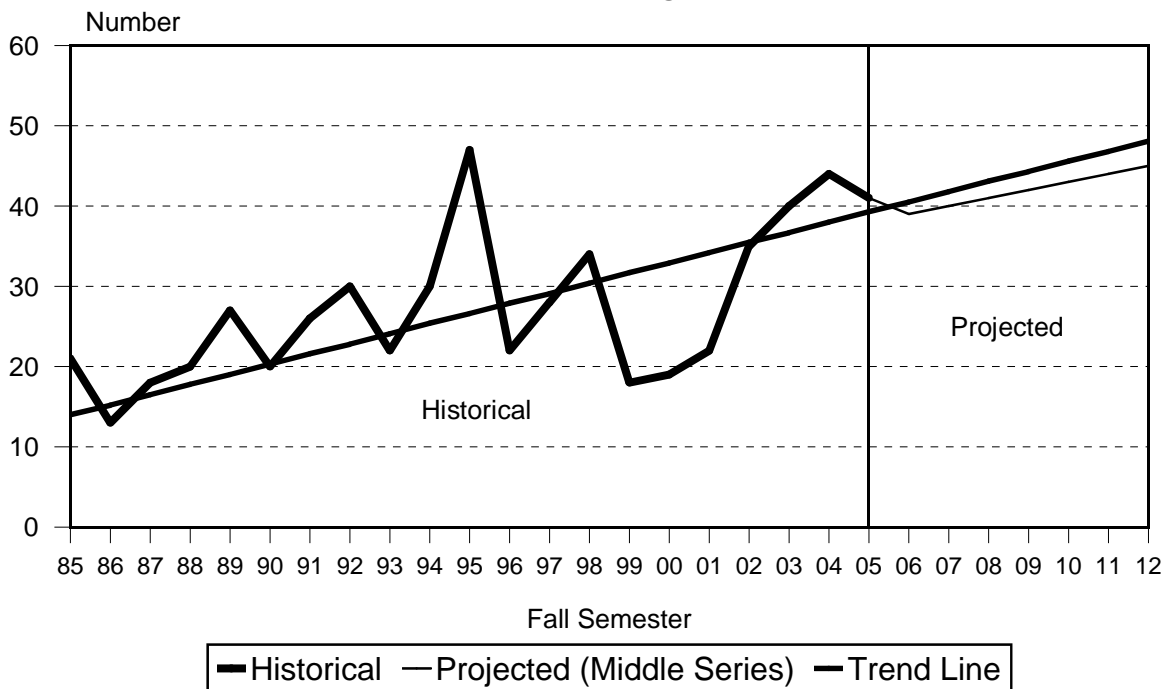


Figure 6
Classified Returning Enrollment



University of Hawai'i - West O'ahu
 Enrollment Projections of Credit Students

Figure 7
 Classified Continuing Enrollment

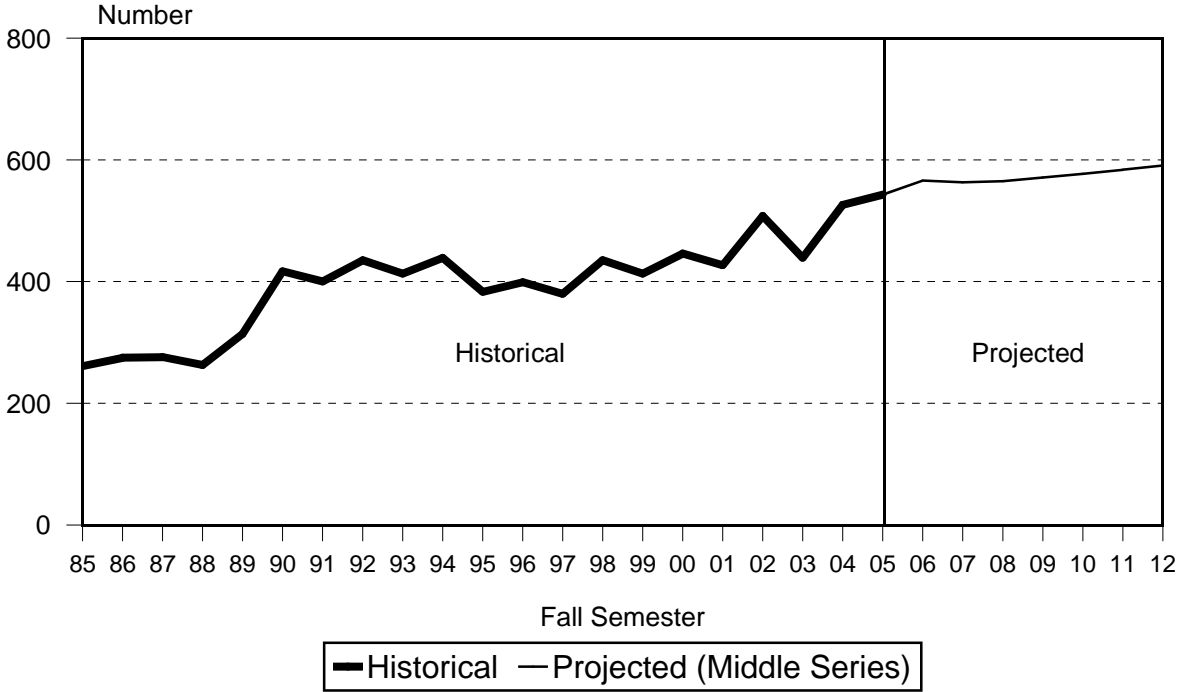


Figure 8
 Enrollment by Education Level

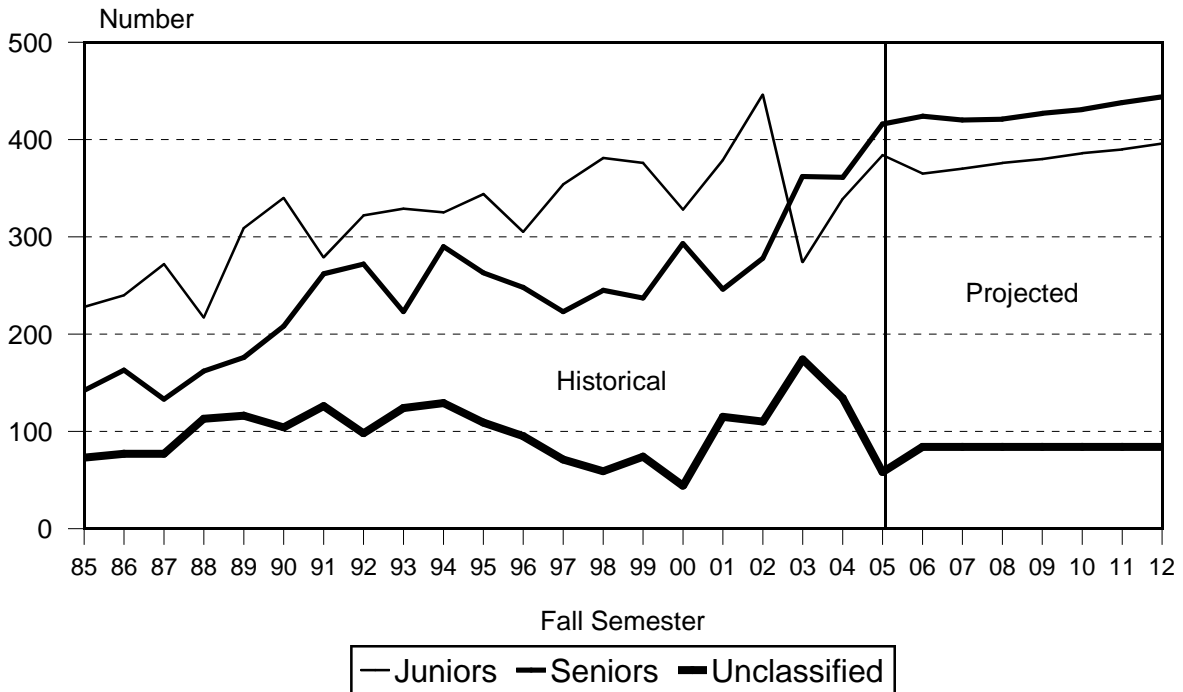


TABLE 1
HEADCOUNT ENROLLMENT OF CREDIT STUDENTS
LOW, MIDDLE AND HIGH PROJECTION SERIES
UNIVERSITY OF HAWAI'I-WEST O'AHU
FALL 2005 TO FALL 2012

| PROJECTION SERIES | ACTUAL | PROJECTED | | | | | | |
|------------------------------|--------|-----------|------|------|------|------|------|------|
| | 2005 | 2006 | 2007 | 2008 | 2009 | 2010 | 2011 | 2012 |
| HIGH SERIES TOTAL | 858 | 893 | 902 | 916 | 930 | 945 | 961 | 977 |
| Classified | 800 | 799 | 808 | 822 | 836 | 851 | 867 | 883 |
| Junior | 384 | 374 | 381 | 390 | 397 | 403 | 411 | 418 |
| Senior | 416 | 425 | 427 | 432 | 439 | 448 | 456 | 465 |
| Unclassified and Other | 58 | 94 | 94 | 94 | 94 | 94 | 94 | 94 |
| Registration Status | 800 | 799 | 808 | 822 | 836 | 851 | 867 | 883 |
| Transfer | 216 | 189 | 194 | 198 | 202 | 206 | 210 | 215 |
| Returning | 41 | 39 | 40 | 42 | 43 | 44 | 45 | 46 |
| Continuing | 543 | 571 | 574 | 582 | 591 | 601 | 612 | 622 |
| MIDDLE SERIES TOTAL 1/ | 858 | 873 | 874 | 881 | 891 | 901 | 912 | 924 |
| Classified | 800 | 789 | 790 | 797 | 807 | 817 | 828 | 840 |
| Junior | 384 | 365 | 370 | 376 | 380 | 386 | 390 | 396 |
| Senior | 416 | 424 | 420 | 421 | 427 | 431 | 438 | 444 |
| Unclassified and Other | 58 | 84 | 84 | 84 | 84 | 84 | 84 | 84 |
| Registration Status | 800 | 789 | 790 | 797 | 807 | 817 | 828 | 840 |
| Transfer | 216 | 184 | 187 | 191 | 194 | 197 | 200 | 204 |
| Returning | 41 | 39 | 40 | 41 | 42 | 43 | 44 | 45 |
| Continuing | 543 | 566 | 563 | 565 | 571 | 577 | 584 | 591 |
| LOW SERIES TOTAL | 858 | 833 | 814 | 808 | 809 | 813 | 818 | 823 |
| Classified | 800 | 752 | 733 | 727 | 728 | 732 | 737 | 742 |
| Junior | 384 | 328 | 331 | 333 | 336 | 339 | 341 | 343 |
| Senior | 416 | 424 | 402 | 394 | 392 | 393 | 396 | 399 |
| Unclassified and Other | 58 | 81 | 81 | 81 | 81 | 81 | 81 | 81 |
| Registration Status | 800 | 752 | 733 | 727 | 728 | 732 | 737 | 742 |
| Transfer | 216 | 180 | 183 | 186 | 190 | 193 | 196 | 199 |
| Returning | 41 | 40 | 40 | 40 | 40 | 40 | 40 | 40 |
| Continuing | 543 | 532 | 510 | 501 | 498 | 499 | 501 | 503 |

1/ The remaining tables in the report use the Middle Projection Series.

TABLE 2
HEADCOUNT ENROLLMENT OF CREDIT STUDENTS, BY REGISTRATION STATUS
MIDDLE PROJECTION SERIES
UNIVERSITY OF HAWAI'I-WEST O'AHU
FALL 1999 TO FALL 2012

| REGISTRATION STATUS EDUCATIONAL LEVEL AND | HISTORICAL | | | | | | | PROJECTED | | | | | | |
|--|------------|------|------|------|------|------|------|-----------|------|------|------|------|------|------|
| | 1999 | 2000 | 2001 | 2002 | 2003 | 2004 | 2005 | 2006 | 2007 | 2008 | 2009 | 2010 | 2011 | 2012 |
| TOTAL | 687 | 665 | 740 | 834 | 810 | 834 | 858 | 873 | 874 | 881 | 891 | 901 | 912 | 924 |
| Classified | 613 | 621 | 625 | 724 | 636 | 700 | 800 | 789 | 790 | 797 | 807 | 817 | 828 | 840 |
| Junior | 376 | 328 | 379 | 446 | 274 | 339 | 384 | 365 | 370 | 376 | 380 | 386 | 390 | 396 |
| Senior | 237 | 293 | 246 | 278 | 362 | 361 | 416 | 424 | 420 | 421 | 427 | 431 | 438 | 444 |
| Unclassified & Other 1/ | 74 | 44 | 115 | 110 | 174 | 134 | 58 | 84 | 84 | 84 | 84 | 84 | 84 | 84 |
| Transfer | 182 | 156 | 176 | 181 | 157 | 130 | 216 | 184 | 187 | 191 | 194 | 197 | 200 | 204 |
| Junior | 165 | 152 | 164 | 167 | 132 | 91 | 197 | 148 | 151 | 154 | 156 | 159 | 161 | 164 |
| Senior | 17 | 4 | 12 | 14 | 25 | 39 | 19 | 36 | 36 | 37 | 38 | 38 | 39 | 40 |
| Returning | 18 | 19 | 22 | 35 | 40 | 44 | 41 | 39 | 40 | 41 | 42 | 43 | 44 | 45 |
| Junior | 17 | 8 | 12 | 20 | 18 | 18 | 23 | 19 | 19 | 20 | 20 | 21 | 21 | 22 |
| Senior | 1 | 11 | 10 | 15 | 22 | 26 | 18 | 20 | 21 | 21 | 22 | 22 | 23 | 23 |
| Continuing | 413 | 446 | 427 | 508 | 439 | 526 | 543 | 566 | 563 | 565 | 571 | 577 | 584 | 591 |
| Junior | 194 | 168 | 203 | 259 | 124 | 230 | 164 | 198 | 200 | 202 | 204 | 206 | 208 | 210 |
| Senior | 219 | 278 | 224 | 249 | 315 | 296 | 379 | 368 | 363 | 363 | 367 | 371 | 376 | 381 |
| Unclassified and Other | 74 | 44 | 115 | 110 | 174 | 134 | 58 | 84 | 84 | 84 | 84 | 84 | 84 | 84 |
| Unclassified | 74 | 44 | 115 | 110 | 132 | 97 | 29 | 55 | 55 | 55 | 55 | 55 | 55 | 55 |
| Home-Base at Other UH Campus 2/ | | | | | 42 | 37 | 29 | 29 | 29 | 29 | 29 | 29 | 29 | 29 |

1/ Includes any records with invalid data on education level.

2/ Students whose Primary campus, as defined in Banner / ODS, is a UH campus other than UH-West O'ahu.

Note: Counts by registration status for Fall 1999 have been adjusted for computer error, and therefore may not tie to figures reported elsewhere.

TABLE 3
 HEADCOUNT ENROLLMENT, BY PROGRAM
 MIDDLE PROJECTION SERIES
 UNIVERSITY OF HAWAI'I-WEST O'AHU
 FALL 2005 TO FALL 2012

| PROGRAM | ACTUAL | PROJECTED | | | | | | |
|-----------------------------|--------|-----------|------|------|------|------|------|------|
| | 2005 | 2006 | 2007 | 2008 | 2009 | 2010 | 2011 | 2012 |
| TOTAL | 858 | 873 | 874 | 881 | 891 | 901 | 912 | 924 |
| Upper Division | 858 | 873 | 874 | 881 | 891 | 901 | 912 | 924 |
| Business Administration | 286 | 282 | 282 | 285 | 289 | 292 | 296 | 300 |
| Upper Division | 286 | 282 | 282 | 285 | 289 | 292 | 296 | 300 |
| Humanities | 81 | 80 | 80 | 81 | 82 | 83 | 84 | 85 |
| Upper Division | 81 | 80 | 80 | 81 | 82 | 83 | 84 | 85 |
| Public Administration | 116 | 114 | 115 | 116 | 117 | 118 | 120 | 122 |
| Upper Division | 116 | 114 | 115 | 116 | 117 | 118 | 120 | 122 |
| Social Sciences | 317 | 313 | 313 | 315 | 319 | 324 | 328 | 333 |
| Upper Division | 317 | 313 | 313 | 315 | 319 | 324 | 328 | 333 |
| Unclassified | 29 | 55 | 55 | 55 | 55 | 55 | 55 | 55 |
| Unclassified 1/ | 29 | 55 | 55 | 55 | 55 | 55 | 55 | 55 |
| Home-Based at Other | | | | | | | | |
| UH Campus 2/ | 29 | 29 | 29 | 29 | 29 | 29 | 29 | 29 |
| Upper Division | 29 | 29 | 29 | 29 | 29 | 29 | 29 | 29 |

1/ Includes student records with invalid data on education level.

2/ Students whose Primary campus, as defined in Banner / ODS, is a UH campus other than UH-West O'ahu.

Note: At the present time, UH-West O'ahu enrolls only upper division students.

TABLE 4
 STUDENT SEMESTER HOURS OFFERED, BY PROGRAM
 MIDDLE PROJECTION SERIES
 UNIVERSITY OF HAWAI'I-WEST O'AHU
 FALL 2005 TO FALL 2012

| PROGRAM | ACTUAL | PROJECTED | | | | | | |
|----------------------------|--------|-----------|-------|-------|-------|-------|-------|-------|
| | 2005 | 2006 | 2007 | 2008 | 2009 | 2010 | 2011 | 2012 |
| TOTAL | 7,326 | 7,394 | 7,405 | 7,465 | 7,551 | 7,638 | 7,734 | 7,839 |
| Upper Division | 7,326 | 7,394 | 7,405 | 7,465 | 7,551 | 7,638 | 7,734 | 7,839 |
| Business Admin | 1,440 | 1,438 | 1,438 | 1,453 | 1,471 | 1,487 | 1,505 | 1,526 |
| Upper Division | 1,440 | 1,438 | 1,438 | 1,453 | 1,471 | 1,487 | 1,505 | 1,526 |
| Humanities | 1,281 | 1,287 | 1,288 | 1,301 | 1,316 | 1,332 | 1,348 | 1,362 |
| Upper Division | 1,281 | 1,287 | 1,288 | 1,301 | 1,316 | 1,332 | 1,348 | 1,362 |
| Public Administration | 1,218 | 1,241 | 1,250 | 1,259 | 1,270 | 1,280 | 1,299 | 1,320 |
| Upper Division | 1,218 | 1,241 | 1,250 | 1,259 | 1,270 | 1,280 | 1,299 | 1,320 |
| Social Sciences | 3,379 | 3,420 | 3,421 | 3,444 | 3,486 | 3,531 | 3,574 | 3,623 |
| Upper Division | 3,379 | 3,420 | 3,421 | 3,444 | 3,486 | 3,531 | 3,574 | 3,623 |
| General | 8 | 8 | 8 | 8 | 8 | 8 | 8 | 8 |
| Upper Division | 8 | 8 | 8 | 8 | 8 | 8 | 8 | 8 |

Note: At the present time UH-West O'ahu offers only upper division courses.

TABLE 5
 FULL-TIME EQUIVALENT COURSE ENROLLMENT SERVED, BY PROGRAM
 MIDDLE PROJECTION SERIES
 UNIVERSITY OF HAWAI'I-WEST O'AHU
 FALL 2005 TO FALL 2012

| PROGRAM | ACTUAL | PROJECTED | | | | | | |
|-----------------------------|--------|-----------|------|------|------|------|------|------|
| | 2005 | 2006 | 2007 | 2008 | 2009 | 2010 | 2011 | 2012 |
| TOTAL | 488 | 494 | 494 | 499 | 504 | 509 | 516 | 524 |
| Upper Division | 488 | 494 | 494 | 499 | 504 | 509 | 516 | 524 |
| Business Admin | 96 | 96 | 96 | 97 | 98 | 99 | 100 | 102 |
| Upper Division | 96 | 96 | 96 | 97 | 98 | 99 | 100 | 102 |
| Humanities | 86 | 86 | 86 | 87 | 88 | 89 | 90 | 91 |
| Upper Division | 86 | 86 | 86 | 87 | 88 | 89 | 90 | 91 |
| Public Administration | 81 | 83 | 83 | 84 | 85 | 85 | 87 | 88 |
| Upper Division | 81 | 83 | 83 | 84 | 85 | 85 | 87 | 88 |
| Social Sciences | 224 | 228 | 228 | 230 | 232 | 235 | 238 | 242 |
| Upper Division | 224 | 228 | 228 | 230 | 232 | 235 | 238 | 242 |
| General | 1 | 1 | 1 | 1 | 1 | 1 | 1 | 1 |
| Upper Division | 1 | 1 | 1 | 1 | 1 | 1 | 1 | 1 |

Note: At the present time UH-West O'ahu offers only upper division courses.

TABLE 6
 HEADCOUNT ENROLLMENT OF CREDIT STUDENTS, BY ATTENDANCE STATUS
 MIDDLE PROJECTION SERIES
 UNIVERSITY OF HAWAI'I-WEST O'AHU
 FALL 2005 TO FALL 2012

| ATTENDANCE STATUS | ACTUAL | PROJECTED | | | | | | |
|-----------------------|--------|-----------|------|------|------|------|------|------|
| | 2005 | 2006 | 2007 | 2008 | 2009 | 2010 | 2011 | 2012 |
| TOTAL | 858 | 873 | 874 | 881 | 891 | 901 | 912 | 924 |
| Full-Time | 306 | 314 | 314 | 317 | 320 | 324 | 328 | 332 |
| Upper Division | 306 | 314 | 314 | 317 | 320 | 324 | 328 | 332 |
| Part-Time 1/ | 552 | 559 | 560 | 564 | 571 | 577 | 584 | 592 |
| Upper Division 1/ ... | 552 | 559 | 560 | 564 | 571 | 577 | 584 | 592 |

1/ Includes student records with invalid data on attendance status.

Note: Numbers include unclassified students.