

SPECIAL REPORT

**GRADUATION AND PERSISTENCE RATES
UNIVERSITY OF HAWAII AT HILO
FALL 1987 FALL 1995 COHORTS**

A Summary of Selected Data from the
NCHEMS/UNIVERSITY OF HAWAII SYSTEM
LONGITUDINAL DATABASE PROJECT

Institutional Research Office

University of Hawai'i

February 1998

Reports available online at : <http://www2.hawaii.edu/iro/>

Special Report

GRADUATION AND PERSISTENCE RATES UNIVERSITY OF HAWAII AT HILO FALL 1987 FALL 1995 COHORTS

This special report highlights graduation and persistence rates for degree-seeking students at the University of Hawai'i at Hilo. Data are from the NCHEMS / University of Hawai'i System Longitudinal Database Project, conducted by the National Center for Higher Education Management Systems (NCHEMS) in 1991. The database has since been updated and maintained by the University of Hawai'i Office of Information Technology Services and the Institutional Research Office.

The database for this report is a series of longitudinal cohort files for students entering UH Hilo in Fall 1987 through Fall 1995. Academic histories for these students have been compiled and updated through Fall 1996. Cohorts include only undergraduates with no previous history of attending a UH institution. Thus, only first-time students and transfers from non-UH campuses are included in the cohorts. Transfers into UH Hilo from other UH campuses are excluded from the cohorts.

This report focuses on the degree-seeking undergraduate students in each cohort, and includes full-time and part-time students, as well as first-time and transfer students. Data on graduation rates include both associate degrees (though their numbers are very small) as well as baccalaureate degrees. Therefore, the cohorts in this study differ from the traditional student tracking cohort of first-time, full-time baccalaureate degree-seeking undergraduates. Also, the numbers of first-time and transfer students in each cohort differ from figures reported in the Management and Planning Support (MAPS) reports. The numbers reported herein have been compiled by searching records back to Fall 1983 to verify that a first-time student is indeed new to the University of Hawai'i system, and the transfer numbers have been screened to include only students from non-UH institutions. For the MAPS reports, a student's first-time status is self-reported at time of entry, and transfer students include those from other UH campuses.

Definitions

A **graduation rate** represents the proportion of students in a given cohort who started at UH Hilo and who were awarded a degree in successive fall terms. Graduation rates are cumulative; that is, they represent the proportion of a starting cohort who were awarded a degree in any term up to and including the term in question. Note that average rates may occasionally decline because fewer and fewer cohorts are used to compute the averages each year. A **persistence rate** represents the proportion of students in a given cohort who started at UH Hilo and were enrolled in successive fall terms. Included in the persistence rates are both students who enrolled and who graduated in the term in question. A student in a given cohort who fails to enroll for a term or terms and subsequently re-enrolls is included in the persistence rate calculation for the term of re-enrollment.

There are three types of graduation and persistence rates reported here. **Systemwide rates** represent students who started at UH Hilo and who graduated or persisted either at UH Hilo or another campus in the UH system. **Starting campus rates** represent students who started at UH Hilo and graduated or persisted at UH Hilo only. **Other campus rates** represent students who started at UH Hilo and who graduated or persisted at another UH campus. For instance, in Table 2a the *systemwide* graduation rate for the Fall 1987 cohort eight years after entry is 51%. This indicates that 51% of the cohort graduated either at UH Hilo or at another UH campus by Fall 1995.

In Table 4b, the *starting campus* persistence rate for the Fall 1987 cohort one year after entry is 38%, indicating that 38% of the starting cohort re-enrolled at UH Hilo in Fall 1988.

This report contains rates out to the eighth year after entry. Regarding graduation rates, first year rates (thus the Fall 1995 cohort) have been omitted due to the small proportion attaining degrees one year after entry.

Average years to graduate in a six-year period is a measure of how long it takes on average for students in a given cohort to graduate within a six-year period; that is, the average length of time to graduation for those students completing within six years of entry. Since this figure can only be calculated for those cohorts that have been enrolled for six years or more, data is available only for the Fall 1987 through Fall 1990 cohorts. This figure should not be confused with “time to degree”; that is, the average length of time to graduation for those graduating in a specific term or year. The first measure tracks entering cohorts forward in time for six years. The second measure takes a graduating class and tracks them back in time to determine how long, on average, a student took to graduate.

Unless otherwise indicated, all rates referred to below are systemwide rates. Graduation rates are six-year rates.

Graduation Rate Highlights

- On average, about 37% of degree-seeking entering students can be expected to graduate within six years of entry (Table 1 & Figure A-1). Interestingly, about one-third of these (12%) will graduate from UH Hilo while close to two-thirds (25%) will graduate from other UH campuses. Thus, a majority of Hilo starters earn degrees from other UH campuses.
- Beyond six years, an additional 13% will complete their degrees. Thus, the average graduation rate after eight years is 51%; about 20% will graduate from Hilo while 31% will graduate elsewhere in the UH system.
- The average number of years to graduate within a six-year period is 4.4 years. For those graduating from UH Hilo, the average is slightly lower at 4.0 years, while students who transfer and graduate at other UH campuses average 4.6 years.
- First-time students and transfers from non-UH campuses have very similar graduation rates, 37% after six years. However, while most non-UH transfers complete their degrees at UH Hilo, first-time students tend to graduate from other UH institutions, 27% compared to 10% at the starting campus. For first-time students earning Bachelor degrees, the ratio of students completing at other campuses is 4 to 1 (24% at other campuses, 6% at Hilo).
- Women have higher graduation rates than men, 40% to 33% after six years. Women maintain a higher rate through the eighth year (54% to 47%), but take somewhat longer to graduate within a six-year period, averaging 4.5 years compared to 4.2 years for men.
- Students of Japanese ancestry have the highest six-year graduation rate at 45%, followed by students of Hawaiian (38%) and Filipino (37%) ethnic backgrounds. (Note: due to small numbers in certain cohorts, rates should be used with caution.)
- Of those graduating within six years, Caucasians and those of other ethnic backgrounds take the shortest time to do so at 4.0 and 3.9 years, respectively. Students of Japanese

backgrounds take the longest, averaging 4.9 years.

Persistence Rate Highlights

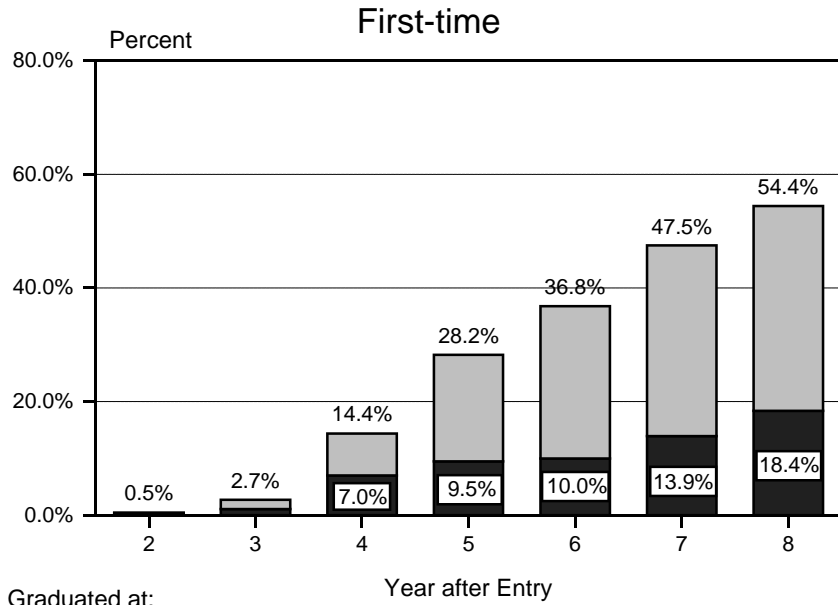
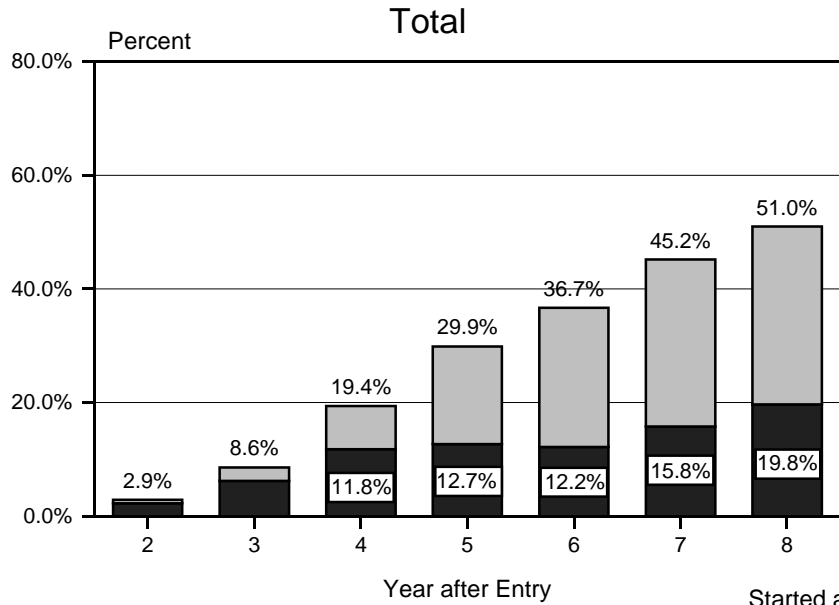
- On average, nearly two-thirds (66%) of entering students are still enrolled systemwide after one year (Table 3 and Figure B-1), about 47% at UH Hilo while 19% have transferred to other UH campuses.
- From the third year onward, there are more of Hilo's entering students enrolled at other UH campuses than there are attending Hilo. This is consistent with the finding that the majority of Hilo's entering students graduate at other UH campuses.
- Systemwide, first-time students persist at higher rates than transfers from non-UH campuses. After one year, 72% of first-time students and 52% of transfers are still enrolled.
- Overall, women persist at slightly higher rates than men. After one year, 68% of women are still enrolled systemwide compared to 63% of men. After six years, 14% of women are still enrolled compared to 10% of men.
- After one year, students of Japanese ethnicity have the highest persistence rate at 81%, with Filipino and Hawaiian students next, at 77% and 72%, respectively. Caucasian students have the lowest one year persistence rate at 52%. After six years, 15% of Japanese students are still enrolled systemwide. Due to small numbers, the persistence rate for Filipinos should be used with caution.

Summary

- About 37% of entering students who start their studies at UH Hilo can be expected to graduate after six years; of those, only one-third will graduate from UH Hilo while two-thirds will graduate at other UH campuses. After eight years, 51% of entering students will earn a degree. The majority will earn a Bachelors degree at UH-Mānoa, averaging 4.7 years to do so.
- UH Hilo appears to be a stepping-stone toward a Bachelor's degree from UH Mānoa. For instance, Table 1 (six years after entry) shows that first-time students at UH Hilo complete their Bachelor's degrees at other UH campuses (mainly UH Mānoa) by a 4 to 1 ratio over those completing their degree at UH Hilo (24% completing at other campuses and 6% completing degrees at UH Hilo).
- About 66% of entering students at UH Hilo re-enroll after one year. However, only about 47% re-enroll at UH Hilo, with the remainder migrating to other UH campuses. From the third year after entry, there are proportionately more of Hilo's entering cohorts enrolled at other UH campuses than are enrolled at UH Hilo, their starting campus.
- First-time students are more likely to persist and to complete a degree systemwide than transfer students from non-UH campuses. However, non-UH transfers complete their degrees in less time and are more likely to remain at UH Hilo than are first-time students.
- Women have higher graduation and persistence rates than men. However, average years to graduate over a six-year period is slightly shorter for men.

- In general, students of Japanese ethnicity have the highest persistence rates and the second highest completion rates, but have the longest average time to completion. Caucasians and students of other ethnic backgrounds have the shortest average time to completion at about 4.0 years.

Figure A-1
University of Hawai'i at Hilo
Average Graduation Rates, Fall 1987 to Fall 1995 Cohorts, as of Fall 1996



Started at Hilo, Graduated at:

■ Hilo	■ Other UH Campus
--------	-------------------

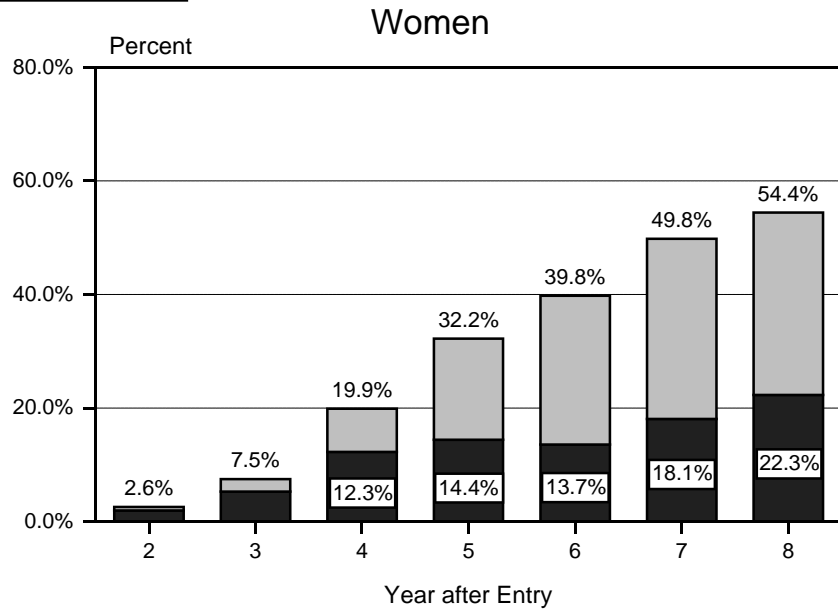
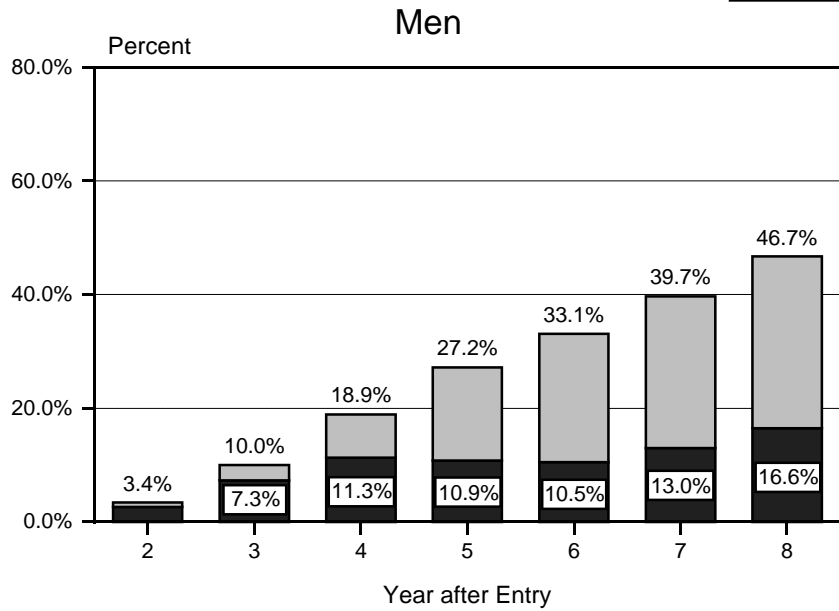
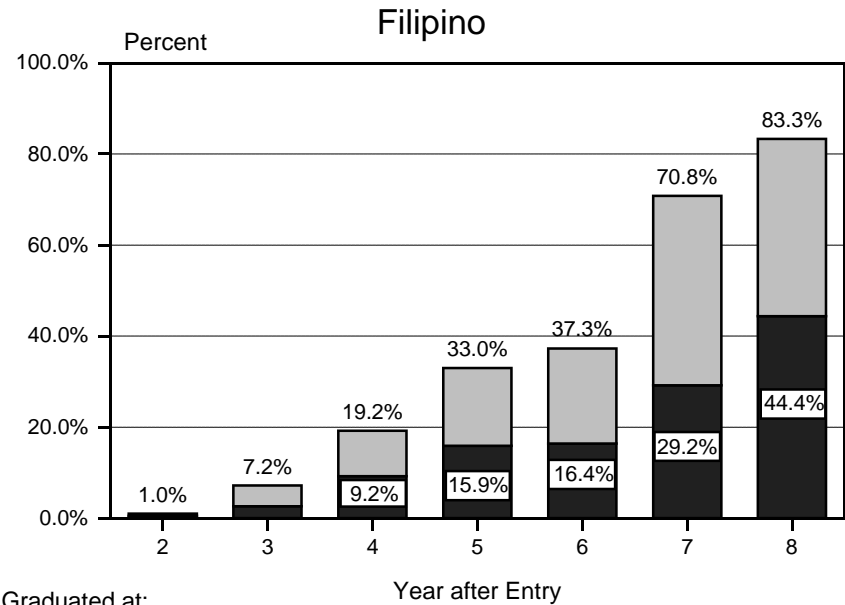
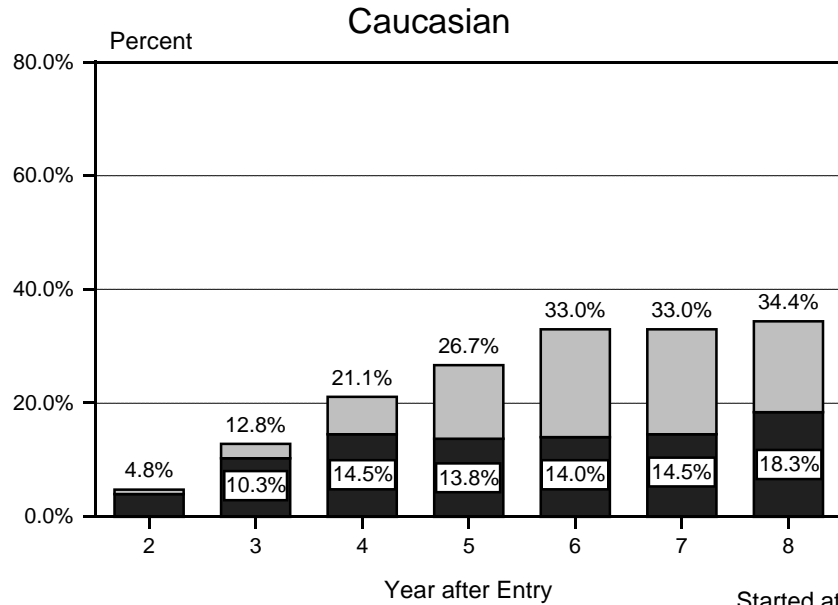


Figure A-2
University of Hawai'i at Hilo
Average Graduation Rates, Fall 1987 to Fall 1995 Cohorts, as of Fall 1996



Started at Hilo, Graduated at:

Hilo
 Other UH Campus

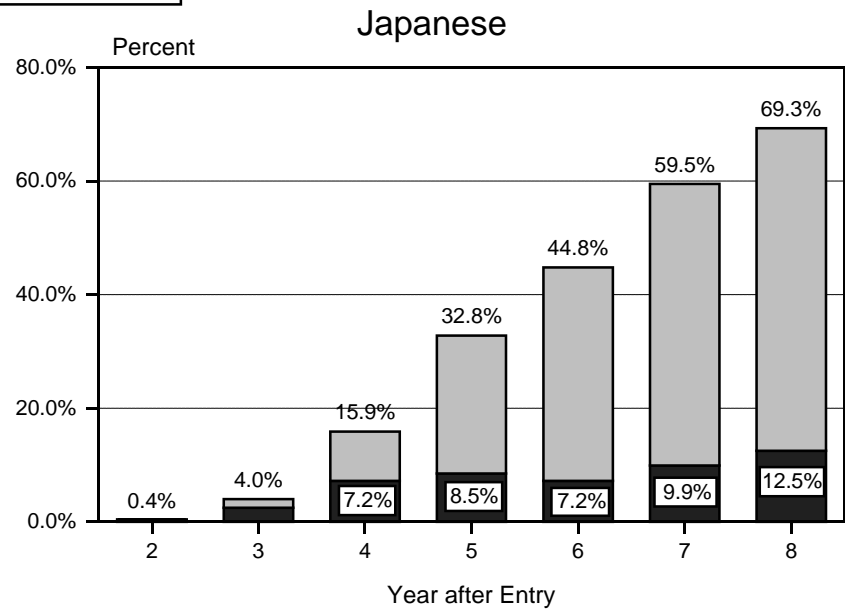
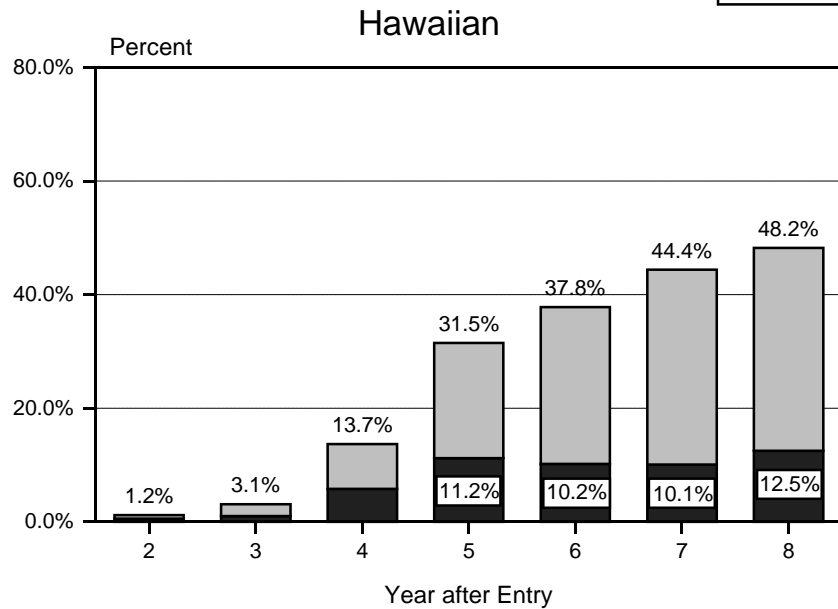


Table 1
AVERAGE GRADUATION RATES - as of Fall 1996
University of Hawai i at Hilo
Fall 1987 to Fall 1995 Cohorts, Degree-Seekers Only

Type of Rate and Characteristic	Avg Yrs to Grad in a 6-Yr Period	Average Graduation Rate Years after entry						
		2	3	4	5	6	7	8
SYSTEMWIDE RATE.....	4.4	2.9	8.6	19.4	29.9	36.7	45.2	51.0
By Registration Status:								
First-Time Students	4.7	0.5	2.7	14.4	28.2	36.8	47.5	54.4
Bachelors Awarded	4.9		0.9	10.3	22.5	29.7	40.9	46.3
Associate Awarded	4.1	0.5	1.8	4.1	5.7	7.1	6.6	8.1
Non-UH Transfers	3.4	8.8	22.7	31.8	34.1	36.6	39.4	41.6
Bachelors Awarded	3.4	8.7	22.3	31.2	33.3	35.9	38.8	41.6
Associate Awarded	2.5	0.1	0.4	0.6	0.7	0.7	0.6	
By Degree:								
Bachelors Awarded	4.5	2.6	7.3	16.3	25.5	31.3	40.3	45.1
Associate Awarded	4.0	0.4	1.4	3.1	4.3	5.4	4.9	6.0
By Gender:								
Men	4.2	3.4	10.0	18.9	27.2	33.1	39.7	46.7
Women	4.5	2.6	7.5	19.9	32.2	39.8	49.8	54.4
By Attendance Status:								
Full-Time	4.4	3.3	9.3	22.0	33.3	41.1	50.4	56.0
Part-Time	4.6	1.3	5.9	10.1	18.3	21.8	25.4	31.2
By Ethnicity:								
Japanese	4.9	0.4	4.0	15.9	32.8	44.8	59.5	69.3
Chinese	4.2	6.4	19.7	28.6	31.1	28.6	40.0	33.3
Filipino	4.5	1.0	7.2	19.2	33.0	37.3	70.8	83.3
Hawaiian	4.6	1.2	3.1	13.7	31.5	37.8	44.4	48.2
Caucasian	4.0	4.8	12.8	21.1	26.7	33.0	33.0	34.4
Mixed	4.6	1.2	6.2	20.4	25.3	35.9	49.2	54.3
Other	3.9	5.6	11.4	25.7	35.2	35.1	51.9	60.0
STARTING CAMPUS RATE....	4.0	2.3	6.2	11.8	12.7	12.2	15.8	19.8
By Registration Status:								
First-Time Students	4.4	0.3	1.1	7.0	9.5	10.0	13.9	18.4
Bachelors Awarded	4.6		0.4	5.3	6.8	5.6	10.5	14.5
Associate Awarded	4.2	0.6	1.3	2.6	3.4	4.3	3.4	3.9
Non-UH Transfers	3.3	7.1	18.2	23.8	20.8	18.5	20.6	23.8
Bachelors Awarded	3.3	7.0	17.9	23.3	20.1	17.8	20.0	23.8
Associate Awarded	2.5	0.3	0.7	0.7	0.7	0.7	0.6	
By Degree:								
Bachelors Awarded	3.9	2.1	5.6	10.5	10.5	8.8	13.2	16.9
Associate Awarded	4.1	0.5	1.1	2.1	2.7	3.4	2.6	2.9
By Gender:								
Men	3.7	2.6	7.3	11.3	10.9	10.5	13.0	16.6
Women	4.2	2.0	5.2	12.3	14.4	13.7	18.1	22.3
By Attendance Status:								
Full-Time	3.9	2.6	6.8	13.3	13.7	13.1	16.8	21.2
Part-Time	4.5	0.9	3.7	6.4	9.3	9.2	11.9	14.3

Table 1 (cont.)

Type of Rate and Characteristic	Avg Yrs to Grad in a 6-Yr Period	Average Graduation Rate Years after entry						
		2	3	4	5	6	7	8
By Ethnicity:								
Japanese	4.5	0.4	2.5	7.2	8.5	7.2	9.9	12.5
Chinese	3.7	5.1	16.9	19.0	17.8	17.1	30.0	33.3
Filipino	4.4	0.5	2.6	9.2	15.9	16.4	29.2	44.4
Hawaiian	4.6	0.6	1.0	5.7	11.2	10.2	10.1	12.5
Caucasian	3.6	4.0	10.3	14.5	13.8	14.0	14.5	18.3
Mixed	4.2	0.3	3.9	14.4	10.0	11.1	23.1	30.4
Other	3.8	4.7	8.4	17.8	19.0	16.2	25.0	23.3
OTHER UH CAMPUS RATE....	4.6	0.7	2.4	7.6	17.2	24.5	29.4	31.3
By Registration Status:								
First-Time Students	4.9	0.3	1.6	7.4	18.7	26.8	33.6	36.0
Bachelors Awarded	5.0	0.5	0.5	5.0	15.7	24.1	30.4	31.8
Associate Awarded	3.8	0.3	1.1	2.5	3.0	2.7	3.2	4.2
Non-UH Transfers	3.5	1.7	4.5	7.9	13.2	18.1	18.8	17.8
Bachelors Awarded	3.5	1.7	4.3	7.9	13.2	18.1	18.8	17.8
Associate Awarded			0.1					
By Degree:								
Bachelors Awarded	4.7	0.5	1.6	5.8	15.0	22.5	27.1	28.1
Associate Awarded	3.8	0.2	0.8	1.8	2.1	2.0	2.3	3.1
By Gender:								
Men	4.5	0.8	2.7	7.6	16.4	22.7	26.7	30.2
Women	4.7	0.6	2.2	7.6	17.9	26.2	31.7	32.1
By Attendance Status:								
Full-Time	4.6	0.7	2.5	8.6	19.6	28.1	33.6	34.9
Part-Time	4.7	0.4	2.2	3.7	9.0	12.6	13.5	16.9
By Ethnicity:								
Japanese	5.0		1.5	8.7	24.4	37.7	49.6	56.8
Chinese	5.0	1.3	2.8	9.5	13.3	11.4	10.0	
Filipino	4.6	0.5	4.6	10.0	17.0	20.9	41.7	38.9
Hawaiian	4.6	0.6	2.1	7.9	20.3	27.6	34.3	35.7
Caucasian	4.3	0.9	2.5	6.6	13.0	19.0	18.5	16.0
Mixed	4.8	0.9	2.3	6.0	15.3	24.8	26.2	23.9
Other	4.0	0.9	3.0	7.9	16.2	18.9	26.9	36.7

Table 2a (cont.)

Characteristic and Cohort	Cohort Total	Avg Yrs to Grad in a 6-yr Period 1/	Systemwide Graduation Rates													
			Years after entry													
			2		3		4		5		6		7		8	
No.	Rate	No.	Rate	No.	Rate	No.	Rate	No.	Rate	No.	Rate	No.	Rate			
Hawaiian		4.6		1.2		3.1		13.7		31.5		37.8		44.4		48.2
Fall 1987	32	5.0					4	12.5	11	34.4	15	46.9	15	46.9	16	50.0
Fall 1988	24	5.3					1	4.2	4	16.7	7	29.2	10	41.7	11	45.8
Fall 1989	43	4.5	1	2.3	3	7.0	7	16.3	16	37.2	18	41.9	19	44.2		
Fall 1990	97	4.4	3	3.1	7	7.2	16	16.5	28	28.9	34	35.1				
Fall 1991	55	NA			1	1.8	8	14.5	20	36.4						
Fall 1992	64	NA					7	10.9								
Fall 1993	70	NA			1	1.4										
Fall 1994	105	NA	2	1.9												
Caucasian		4.0		4.8		12.8		21.1		26.7		33.0		33.0		34.4
Fall 1987	60	3.7	5	8.3	11	18.3	15	25.0	21	35.0	23	38.3	24	40.0	24	40.0
Fall 1988	71	3.7	4	5.6	9	12.7	13	18.3	15	21.1	18	25.4	19	26.8	21	29.6
Fall 1989	96	4.0	6	6.3	11	11.5	20	20.8	27	28.1	32	33.3	32	33.3		
Fall 1990	173	4.1	8	4.6	19	11.0	34	19.7	50	28.9	59	34.1				
Fall 1991	109	NA	6	5.5	8	7.3	12	11.0	23	21.1						
Fall 1992	126	NA	7	5.6	24	19.0	40	31.7								
Fall 1993	160	NA	7	4.4	20	12.5										
Fall 1994	133	NA	2	1.5												
Mixed		4.6		1.2		6.2		20.4		25.3		35.9		49.2		54.3
Fall 1987	22	3.9	1	4.5	2	9.1	7	31.8	10	45.5	10	45.5	11	50.0	11	50.0
Fall 1988	24	4.7			1	4.2	4	16.7	8	33.3	10	41.7	13	54.2	14	58.3
Fall 1989	19	4.7			2	10.5	2	10.5	4	21.1	6	31.6	8	42.1		
Fall 1990	52	5.0			2	3.8	5	9.6	9	17.3	16	30.8				
Fall 1991	33	NA	1	3.0	1	3.0	6	18.2	7	21.2						
Fall 1992	66	NA			6	9.1	20	30.3								
Fall 1993	43	NA			2	4.7										
Fall 1994	68	NA	2	2.9												
Other		3.9		5.6		11.4		25.7		35.2		35.1		51.9		60.0
Fall 1987	18	4.0	2	11.1	4	22.2	4	22.2	10	55.6	10	55.6	10	55.6	10	55.6
Fall 1988	12	3.8	2	16.7	3	25.0	5	41.7	8	66.7	8	66.7	8	66.7	8	66.7
Fall 1989	22	4.0	1	4.5	3	13.6	5	22.7	7	31.8	8	36.4	9	40.9		
Fall 1990	59	3.8	2	3.4	4	6.8	9	15.3	13	22.0	13	22.0				
Fall 1991	31	NA	1	3.2	2	6.5	8	25.8	12	38.7						
Fall 1992	49	NA	2	4.1	8	16.3	18	36.7								
Fall 1993	72	NA	2	2.8	6	8.3										
Fall 1994	75	NA	7	9.3												

1/ Average years to graduate in a six-year period can only be calculated for those cohorts that have been enrolled for six years or more. Therefore, data is available for the Fall 1987 to Fall 1990 entering cohorts only.

Table 2b (cont.)

Characteristic and Cohort	Cohort Total	Avg Yrs to Grad in a 6-yr Period 1/	Starting Campus Graduation Rates Years after entry													
			2		3		4		5		6		7		8	
			No.	Rate	No.	Rate	No.	Rate	No.	Rate	No.	Rate	No.	Rate	No.	Rate
Hawaiian		4.6		0.6		1.0		5.7		11.2		10.2		10.1		12.5
Fall 1987	32	5.2					1	3.1	3	9.4	5	15.6	5	15.6	5	15.6
Fall 1988	24	5.0					1	4.2	1	4.2	2	8.3	2	8.3	2	8.3
Fall 1989	43	5.3							2	4.7	3	7.0	3	7.0		
Fall 1990	97	4.0	2	2.1	3	3.1	6	6.2	8	8.2	10	10.3				
Fall 1991	55	NA			1	1.8	6	10.9	14	25.5						
Fall 1992	64	NA					4	6.3								
Fall 1993	70	NA														
Fall 1994	105	NA	1	1.0												
Caucasian		3.6		4.0		10.3		14.5		13.8		14.0		14.5		18.3
Fall 1987	60	3.5	3	5.0	7	11.7	9	15.0	13	21.7	13	21.7	13	21.7	13	21.7
Fall 1988	71	3.0	3	4.2	6	8.5	7	9.9	8	11.3	8	11.3	9	12.7	11	15.5
Fall 1989	96	3.6	3	3.1	5	5.2	7	7.3	9	9.4	10	10.4	11	11.5		
Fall 1990	173	3.8	6	3.5	12	6.9	18	10.4	20	11.6	25	14.5				
Fall 1991	109	NA	6	5.5	8	7.3	12	11.0	20	18.3						
Fall 1992	126	NA	7	5.6	24	19.0	39	31.0								
Fall 1993	160	NA	7	4.4	20	12.5										
Fall 1994	133	NA	2	1.5												
Mixed		4.2		0.3		3.9		14.4		10.0		11.1		23.1		30.4
Fall 1987	22	4.2					4	18.2	5	22.7	5	22.7	6	27.3	6	27.3
Fall 1988	24	4.0			1	4.2	4	16.7	5	20.8	5	20.8	7	29.2	8	33.3
Fall 1989	19	3.0			1	5.3	1	5.3	1	5.3	1	5.3	2	10.5		
Fall 1990	52	5.0					1	1.9	1	1.9	2	3.8				
Fall 1991	33	NA					2	6.1	3	9.1						
Fall 1992	66	NA			6	9.1	19	28.8								
Fall 1993	43	NA			2	4.7										
Fall 1994	68	NA	1	1.5												
Other		3.8		4.7		8.4		17.8		19.0		16.2		25.0		23.3
Fall 1987	18	4.4	1	5.6	1	5.6	1	5.6	5	27.8	5	27.8	5	27.8	5	27.8
Fall 1988	12	2.5	1	8.3	2	16.7	2	16.7	2	16.7	2	16.7	2	16.7	2	16.7
Fall 1989	22	3.9	1	4.5	3	13.6	5	22.7	6	27.3	7	31.8	6	27.3		
Fall 1990	59	3.5	1	1.7	1	1.7	4	6.8	4	6.8	4	6.8				
Fall 1991	31	NA	1	3.2	2	6.5	7	22.6	10	32.3						
Fall 1992	49	NA	2	4.1	7	14.3	15	30.6								
Fall 1993	72	NA	2	2.8	6	8.3										
Fall 1994	75	NA	7	9.3												

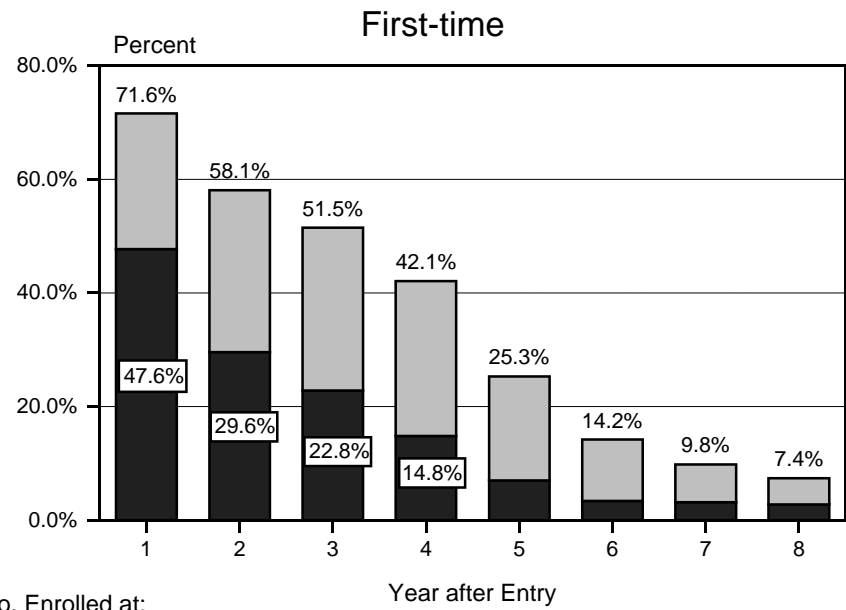
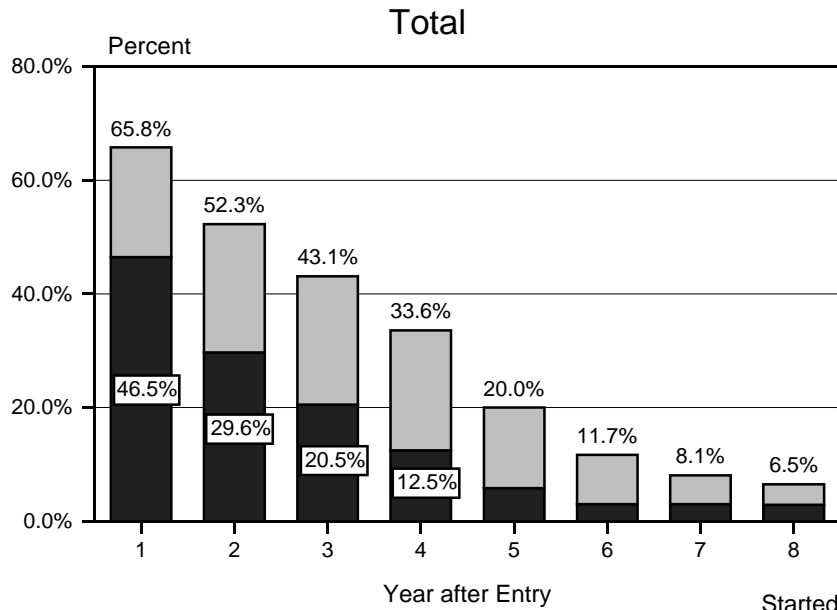
1/ Average years to graduate in a six-year period can only be calculated for those cohorts that have been enrolled for six years or more. Therefore, data is available for the Fall 1987 to Fall 1990 entering cohorts only.

Table 2c (cont.)

Characteristic and Cohort	Cohort Total	Avg Yrs to Grad in a 6-yr period 1/	Other UH Campus Graduation Rates														
			Years after entry														
			2		3		4		5		6		7		8		
No.	Rate	No.	Rate	No.	Rate	No.	Rate	No.	Rate	No.	Rate	No.	Rate				
Hawaiian		4.6		0.6		2.1		7.9		20.3		27.6		34.3		35.7	
Fall 1987	32	4.9					3	9.4		8	25.0	10	31.3	10	31.3	11	34.4
Fall 1988	24	5.4								3	12.5	5	20.8	8	33.3	9	37.5
Fall 1989	43	4.3	1	2.3	3	7.0	7	16.3	14	32.6	15	34.9	16	37.2			
Fall 1990	97	4.5	1	1.0	4	4.1	10	10.3	20	20.6	24	24.7					
Fall 1991	55	NA					2	3.6	6	10.9							
Fall 1992	64	NA					3	4.7									
Fall 1993	70	NA			1	1.4											
Fall 1994	105	NA	1	1.0													
Caucasian		4.3		0.9		2.5		6.6		13.0		19.0		18.5		16.0	
Fall 1987	60	4.0	2	3.3	4	6.7	6	10.0	8	13.3	10	16.7	11	18.3	11	18.3	
Fall 1988	71	4.3	1	1.4	3	4.2	6	8.5	7	9.9	10	14.1	10	14.1	10	14.1	
Fall 1989	96	4.1	3	3.1	6	6.3	13	13.5	18	18.8	22	22.9	21	21.9			
Fall 1990	173	4.4	2	1.2	7	4.0	16	9.2	30	17.3	34	19.7					
Fall 1991	109	NA							3	2.8							
Fall 1992	126	NA					1	0.8									
Fall 1993	160	NA															
Fall 1994	133	NA															
Mixed		4.8		0.9		2.3		6.0		15.3		24.8		26.2		23.9	
Fall 1987	22	3.6	1	4.5	2	9.1	3	13.6	5	22.7	5	22.7	5	22.7	5	22.7	
Fall 1988	24	5.4							3	12.5	5	20.8	6	25.0	6	25.0	
Fall 1989	19	5.0			1	5.3	1	5.3	3	15.8	5	26.3	6	31.6			
Fall 1990	52	5.0			2	3.8	4	7.7	8	15.4	14	26.9					
Fall 1991	33	NA	1	3.0	1	3.0	4	12.1	4	12.1							
Fall 1992	66	NA					1	1.5									
Fall 1993	43	NA															
Fall 1994	68	NA	1	1.5													
Other		4.0		0.9		3.0		7.9		16.2		18.9		26.9		36.7	
Fall 1987	18	3.6	1	5.6	3	16.7	3	16.7	5	27.8	5	27.8	5	27.8	5	27.8	
Fall 1988	12	4.2	1	8.3	1	8.3	3	25.0	6	50.0	6	50.0	6	50.0	6	50.0	
Fall 1989	22	5.0							1	4.5	1	4.5	3	13.6			
Fall 1990	59	4.0	1	1.7	3	5.1	5	8.5	9	15.3	9	15.3					
Fall 1991	31	NA					1	3.2	2	6.5							
Fall 1992	49	NA			1	2.0	3	6.1									
Fall 1993	72	NA															
Fall 1994	75	NA															

1/ Average years to graduate in a six-year period can only be calculated for those cohorts that have been enrolled for six years or more. Therefore, data is available for the Fall 1987 to Fall 1990 entering cohorts only.

Figure B-1
 University of Hawai'i at Hilo
 Average Persistence Rates, Fall 1987 to Fall 1995 Cohorts, as of Fall 1996



Started at Hilo, Enrolled at:

■ Hilo ■ Other UH Campus

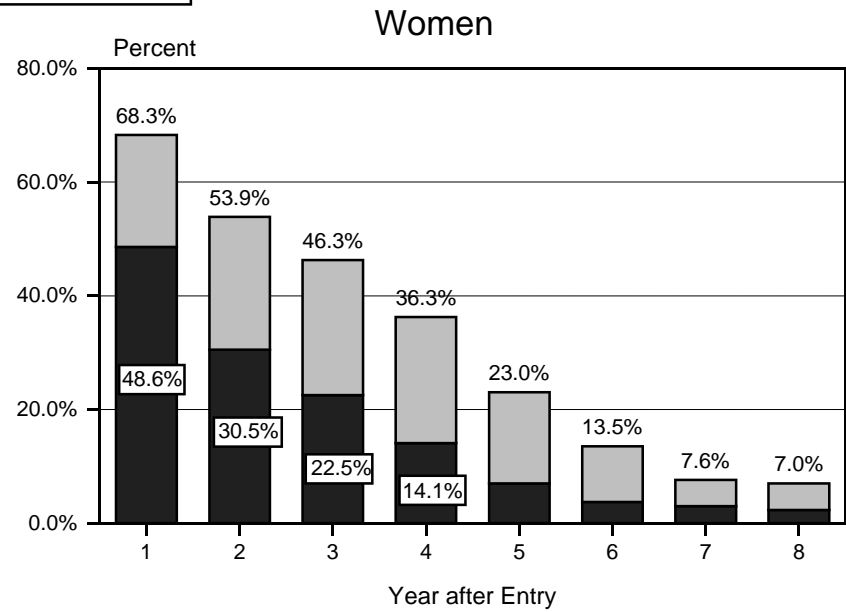
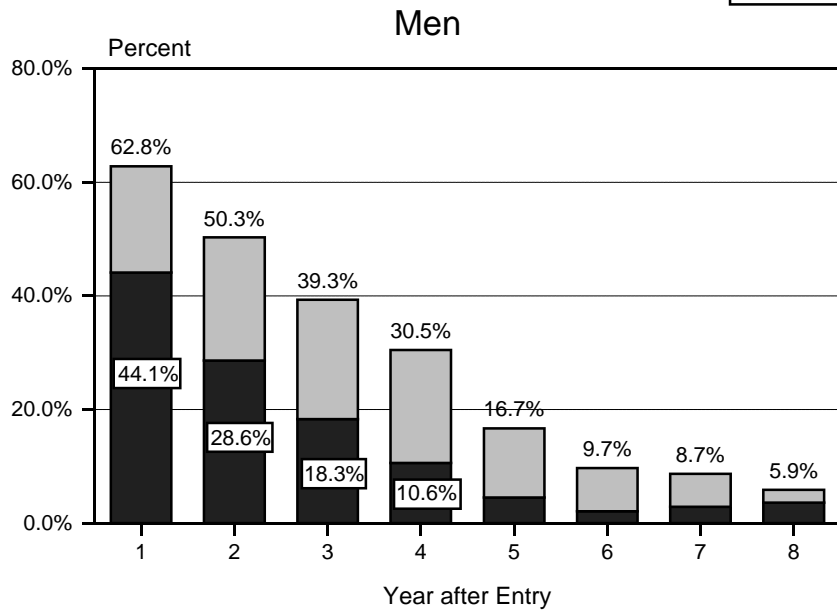
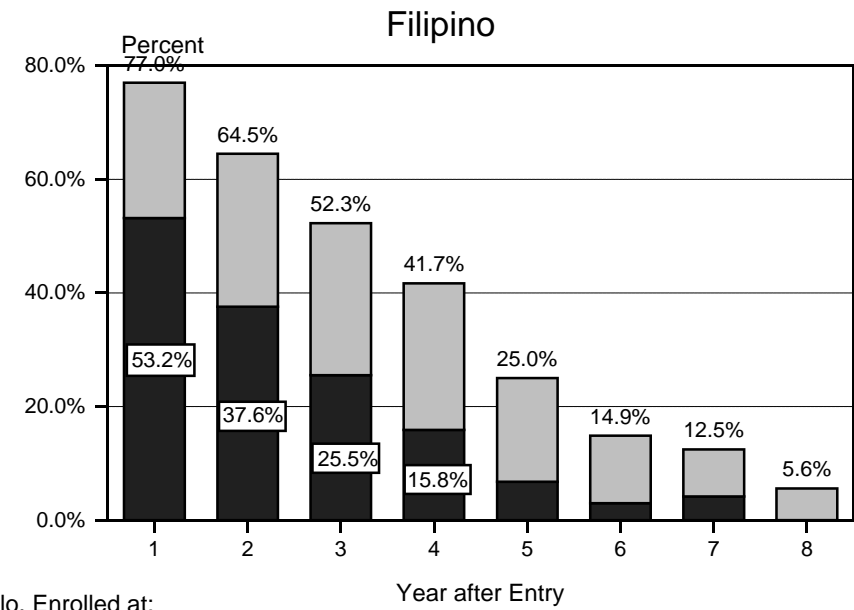
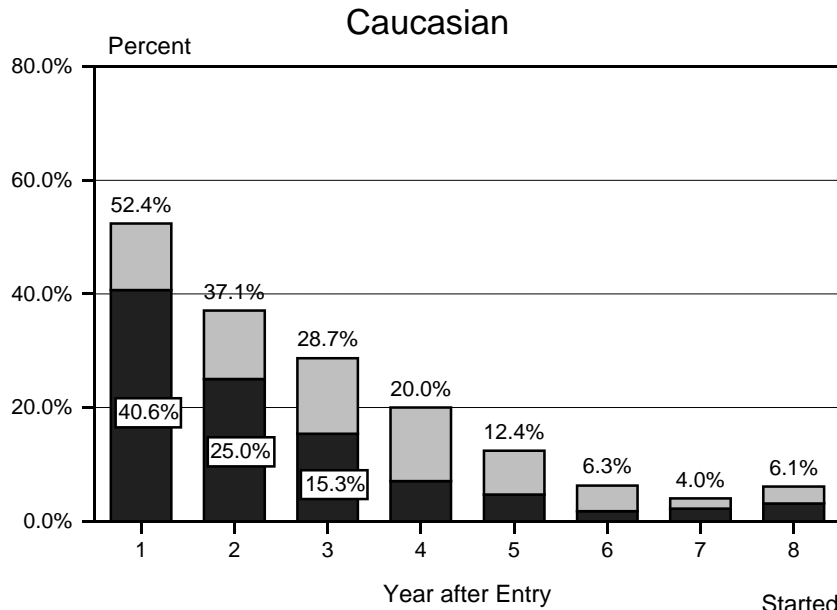


Figure B-2
University of Hawai'i at Hilo
Average Persistence Rates, Fall 1987 to Fall 1995 Cohorts, as of Fall 1996



Started at Hilo, Enrolled at:
 Hilo
 Other UH Campus

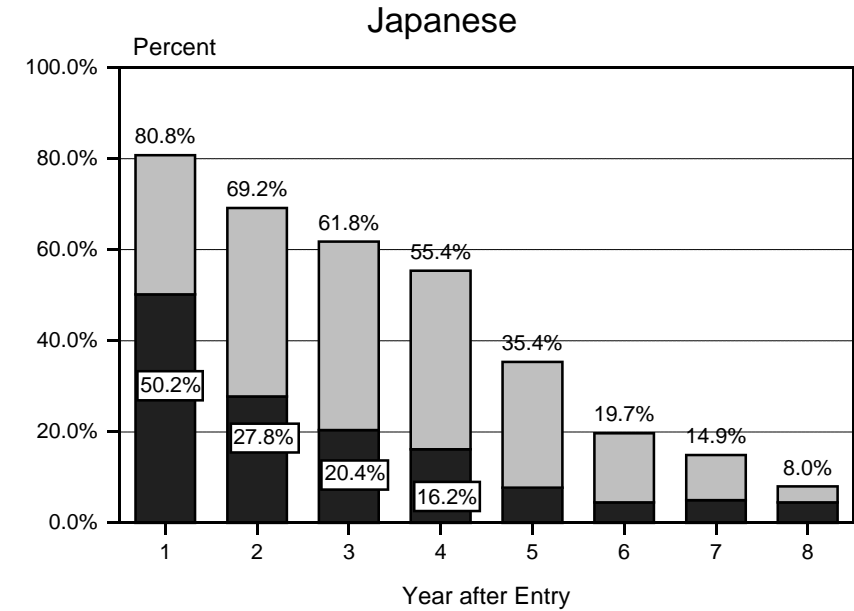
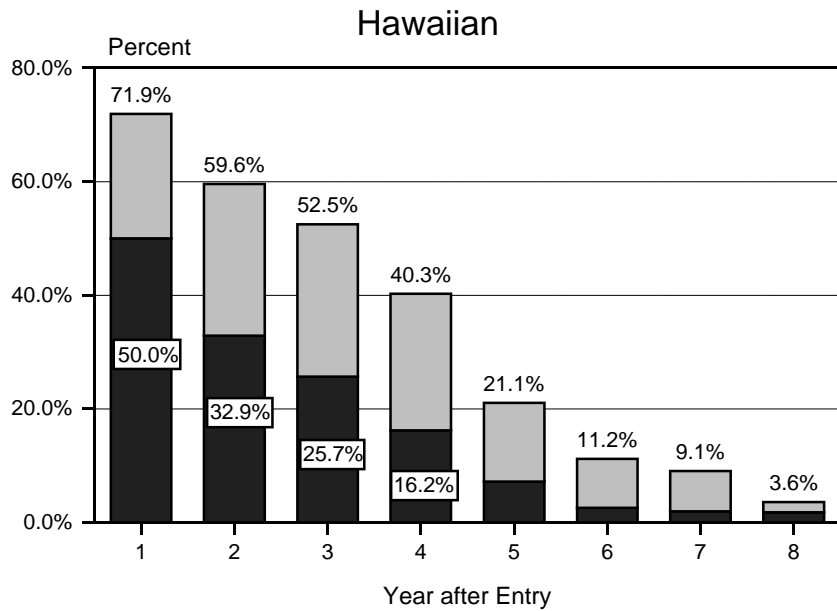


Table 3
AVERAGE PERSISTENCE RATES - as of Fall 1996
University of Hawai i at Hilo
Fall 1987 to Fall 1995 Cohorts, Degree-Seekers Only

Type of Rate and Characteristic	Average Persistence Rate							
	Years after entry							
	1	2	3	4	5	6	7	8
SYSTEMWIDE RATE	65.8	52.3	43.1	33.6	20.0	11.7	8.1	6.5
By Registration Status:								
First-Time Students	71.6	58.1	51.5	42.1	25.3	14.2	9.8	7.4
Intended Degree: Bachelors...	64.5	48.8	42.8	35.0	19.7	11.2	7.8	6.0
Intended Degree: Associate...	7.1	9.3	8.7	7.1	5.6	3.1	2.1	1.4
Non-UH Transfers	52.1	38.2	23.3	12.8	6.4	4.7	3.5	4.0
Intended Degree: Bachelors...	51.4	37.1	22.7	12.4	6.1	3.7	2.9	4.0
Intended Degree: Associate...	0.7	1.1	0.6	0.4	0.2	1.0	0.6	
By Degree Intended:								
Bachelors	60.6	45.4	36.8	28.4	15.9	9.2	6.4	5.5
Associate	5.2	6.9	6.3	5.2	4.1	2.5	1.6	1.0
By Gender:								
Men	62.8	50.3	39.3	30.5	16.7	9.7	8.7	5.9
Women	68.3	53.9	46.3	36.3	23.0	13.5	7.6	7.0
By Attendance Status:								
Full-Time	69.1	55.2	45.0	35.9	19.8	10.7	7.3	5.9
Part-Time	51.3	39.5	35.5	25.2	20.7	15.3	11.1	9.1
By Ethnicity:								
Japanese	80.8	69.2	61.8	55.4	35.4	19.7	14.9	8.0
Chinese	71.1	53.8	32.4	14.3	4.4			
Filipino	77.0	64.5	52.3	41.7	25.0	14.9	12.5	5.6
Hawaiian	71.9	59.6	52.5	40.3	21.1	11.2	9.1	3.6
Caucasian	52.4	37.1	28.7	20.0	12.4	6.3	4.0	6.1
Mixed	66.5	53.8	42.9	35.2	26.7	22.2	10.8	8.7
Other	64.9	51.2	42.2	29.3	10.6	7.2	5.8	10.0
STARTING CAMPUS RATE	46.5	29.6	20.5	12.5	5.8	3.0	3.0	2.9
By Registration Status:								
First-Time Students	47.6	29.6	22.8	14.8	7.0	3.4	3.2	2.8
Intended Degree: Bachelors...	46.6	27.8	20.6	13.1	4.7	1.9	2.5	2.8
Intended Degree: Associate...	2.7	4.2	4.2	2.7	2.8	1.5	0.7	
Non-UH Transfers	44.0	29.6	15.2	6.8	2.9	1.7	2.4	3.0
Intended Degree: Bachelors...	43.6	29.5	15.2	6.8	2.9	1.3	2.4	3.0
Intended Degree: Associate...	1.0	0.3				0.3		
By Degree Intended:								
Bachelors	45.8	28.3	19.0	11.3	4.2	1.7	2.5	2.9
Associate	2.3	3.2	3.1	2.0	2.1	1.2	0.5	
By Gender:								
Men	44.1	28.6	18.3	10.6	4.5	2.1	2.9	3.6
Women	48.6	30.5	22.5	14.1	7.0	3.7	3.0	2.3
By Attendance Status:								
Full-Time	49.6	32.1	21.6	13.2	5.3	2.3	2.5	2.3
Part-Time	33.0	19.1	16.3	9.9	7.5	5.3	4.8	5.2

Table 3 (cont.)

Type of Rate and Characteristic	Average Persistence Rate Years after entry							
	1	2	3	4	5	6	7	8
By Ethnicity:								
Japanese	50.2	27.8	20.4	16.2	7.7	4.5	5.0	4.5
Chinese	41.0	25.6	15.5	4.8				
Filipino	53.2	37.6	25.5	15.8	6.8	3.0	4.2	
Hawaiian	50.0	32.9	25.7	16.2	7.2	2.6	2.0	1.8
Caucasian	40.6	25.0	15.3	7.1	4.7	1.8	2.2	3.1
Mixed	47.8	32.7	24.3	14.8	8.0	7.7	4.6	4.3
Other	48.6	33.4	23.6	15.7	2.8	0.9	1.9	
OTHER UH CAMPUS RATE	19.3	22.6	22.6	21.1	14.1	8.8	5.1	3.6
By Registration Status:								
First-Time Students	23.9	28.5	28.7	27.3	18.3	10.8	6.6	4.6
Intended Degree: Bachelors...	17.8	21.0	22.1	21.9	15.0	9.3	5.3	3.2
Intended Degree: Associate...	6.1	7.5	6.5	5.4	3.3	1.5	1.4	1.4
Non-UH Transfers	8.2	8.6	8.1	5.9	3.4	3.0	1.2	1.0
Intended Degree: Bachelors...	7.8	7.6	7.5	5.5	3.2	2.3	0.6	1.0
Intended Degree: Associate...	0.4	1.0	0.6	0.4	0.2	0.7	0.6	
By Degree Intended:								
Bachelors	14.8	17.1	17.8	17.2	11.7	7.5	3.9	2.6
Associate	4.4	5.6	4.8	3.9	2.5	1.3	1.2	1.0
By Gender:								
Men	18.7	21.7	21.0	19.9	12.2	7.7	5.8	2.4
Women	19.7	23.4	23.9	22.2	15.9	9.8	4.5	4.7
By Attendance Status:								
Full-Time	19.5	23.1	23.4	22.7	14.4	8.5	4.8	3.6
Part-Time	18.3	20.4	19.2	15.3	13.2	9.9	6.3	3.9
By Ethnicity:								
Japanese	30.6	41.4	41.4	39.2	27.7	15.2	9.9	3.4
Chinese	30.1	28.2	16.9	9.5	4.4			
Filipino	23.8	26.9	26.8	25.8	18.2	11.9	8.3	5.6
Hawaiian	21.9	26.7	26.8	24.1	13.9	8.7	7.1	1.8
Caucasian	11.7	12.1	13.3	12.9	7.7	4.5	1.8	3.1
Mixed	18.7	21.1	18.5	20.4	18.7	14.5	6.2	4.3
Other	16.3	17.8	18.6	13.6	7.7	6.3	3.8	10.0

