

SPECIAL REPORT

**GRADUATION AND PERSISTENCE RATES
UNIVERSITY OF HAWAII AT MĀNOA
FALL 1987 - FALL 1995 COHORTS**

A Summary of Selected Data from the
NCHEMS/UNIVERSITY OF HAWAII SYSTEM
LONGITUDINAL DATABASE PROJECT

Institutional Research Office
University of Hawai'i
December 1997

Reports available online at : <http://www2.hawaii.edu/iro/>

Special Report

GRADUATION AND PERSISTENCE RATES UNIVERSITY OF HAWAII AT MĀNOA FALL 1987 FALL 1995 COHORTS

This special report highlights graduation and persistence rates for degree-seeking students at the University of Hawai'i at Mānoa. Data are from the NCHEMS/University of Hawai'i System Longitudinal Database Project, conducted by the National Center for Higher Education Management Systems (NCHEMS) in 1991. The database has since been updated and maintained by the University of Hawai'i Office of Information Technology Services and the Institutional Research Office.

The database for this report is a series of longitudinal cohort files for students entering UH Mānoa in Fall 1987 through Fall 1995. Academic histories for these students were compiled and updated through Fall 1996. Cohorts include only undergraduates with no previous history of attending a UH institution, thus only first-time students and transfers from non-UH campuses are included in each of the cohorts. Transfers to Mānoa from other UH campuses are excluded from the cohorts.

This report focuses on the degree-seeking undergraduate students in each cohort, and includes full- and part-time students, as well as first-time and transfer students. It also includes associate degrees (though their numbers are very small) as well as baccalaureate degrees in the graduation rates. As such it differs from the traditional student tracking cohort of first-time full-time baccalaureate degree-seeking undergraduates. Also, the numbers of first-time and transfer students in each cohort differ from figures found in the Management and Planning Support reports (MAPS). The numbers reported herein have been compiled by searching records back to Fall 1983 to verify that a first-time student is indeed new to the University of Hawai'i system, and the transfer numbers have been screened to include only students from non-UH institutions. For the MAPS reports, a student's first-time status is self-reported at time of entry, and transfer students include those from other UH campuses.

Definitions

Graduation rates represent the proportion of students in a given cohort who started at Mānoa and who were awarded a degree in successive fall terms. Graduation rates are cumulative; that is, they represent the proportion of a starting cohort who were awarded a degree in any term up to and including the term in question. **Persistence rates** represent the proportion of students in a given cohort who started at Mānoa and were enrolled in successive fall terms. Included in the persistence rates are students who enrolled and who graduated in the term in question.

There are three types of graduation and persistence rates reported here. **Systemwide rates** are the proportions of students who started at Mānoa and who graduated or persisted either at Mānoa or another campus in the UH system. **Starting campus rates** are the proportions of students who started at Mānoa and graduated or persisted at Mānoa only. **Other campus rates** are the proportions of students who started at Mānoa and who graduated or persisted at another UH campus.

For example, in Table 2a the *systemwide* graduation rate for the Fall 1987 cohort eight years after entry is 67%. This indicates that 67% of the cohort graduated either at Mānoa or at another UH campus by Fall 1995. In Table 4b, the *starting campus* persistence rate for the Fall 1987 cohort

one year after entry is 79%, indicating that 79% of the cohort was enrolled at Mānoa in Fall 1988. This report contains rates out to the eighth year after entry. Regarding graduation rates, first year rates (and thus, the Fall 1995 cohort) have been omitted due to the small proportion attaining degrees one year after entry.

Average years to graduate in a six-year period is a measure of how long it takes on average to graduate within a six-year period, that is, the average length of time to graduation for those students graduating within six years of entry. Since this figure can only be calculated for cohorts that have been enrolled for six years or more, data is available only for the Fall 1987 through Fall 1990 cohorts. This figure should not be confused with “time to degree”, i.e., the average length of time to graduation for those graduating in a specific term or year. The first measure tracks entering cohorts forward in time for six years. The second measure takes a graduating class and tracks them back in time to determine how long each student took to graduate.

Unless otherwise indicated, all rates below refer to systemwide rates. Graduation rates are 6-year rates.

Graduation Rate Highlights

- On average, about 63% of degree-seeking entering students can be expected to graduate after six years. The majority (60%) will graduate from Mānoa while the remainder (3%) will graduate at other UH campuses, predominantly from the community colleges.
- Overall, a majority of Mānoa's entering cohorts graduate in four to six years, with the highest number of students graduating in five years. Beyond six years, very few students earn degrees; only an additional 6% will graduate in the seventh and eighth years. Thus, the average systemwide graduation rate after eight years is 69%.
- Of those graduating over a six-year period, the average number of years to graduate is 4.6. First-time students graduating with a bachelors degree expectedly take longer to graduate than transfer students, averaging 4.9 years compared with 3.2 years.
- Women outperform men in overall graduation rates, 66% to 58% after six years. Women maintain a higher average rate through the eighth year (71% to 66%), but a slightly higher percentage of men earn degrees in later years than women. Thus, the average number of years to graduate within a six-year period is slightly lower for women, 4.5 years compared with 4.7 years for men.
- After six years, students of Chinese and Japanese backgrounds have the highest graduation rates (75% and 73% respectively), followed by those of Filipino origins (64%). Students of Hawaiian and Caucasian backgrounds completed at lower rates (49% and 47%). After eight years, average rates for Japanese students increase to 81%, the highest rate of all other ethnic backgrounds. In comparison, just over half of Caucasians (52%) have earned a degree in that time.
- Though students of Caucasian ancestry have the lowest graduation rates, they also take the least time to graduate over a six-year period at 3.9 years. Those of Chinese ancestry average 4.2 years while students of Japanese and Hawaiian ancestry take the longest at 4.9 years.

Persistence Rate Highlights

- On average, about 83% of degree-seeking entering students return after one year: 80% return to Mānoa, while about 3% enroll at other UH campuses.
- After six years, 12% were still enrolled systemwide, 9% at Mānoa and 3% elsewhere in the UH system. After eight years, 5% of the students were still enrolled at one of the UH campuses.
- Men and women have very similar persistence rates during the first few years. From the fourth year, there are proportionately less women enrolled, in part due to their higher graduation rates.
- Students of Japanese, Chinese, and Filipino ethnic origins have the highest one-year persistence rates (close to 90% for Japanese and Chinese, 87% for Filipinos), followed by students of Hawaiian, mixed and other ethnic origins (around 80%). Caucasians have the lowest persistence rates; 68% return after the first year and just over one-half are enrolled after the second year. By the end of the fourth year, just over one-fourth are enrolled and 31% have graduated, compared with an overall system average of 55% enrolled and 27% graduated.

Summary

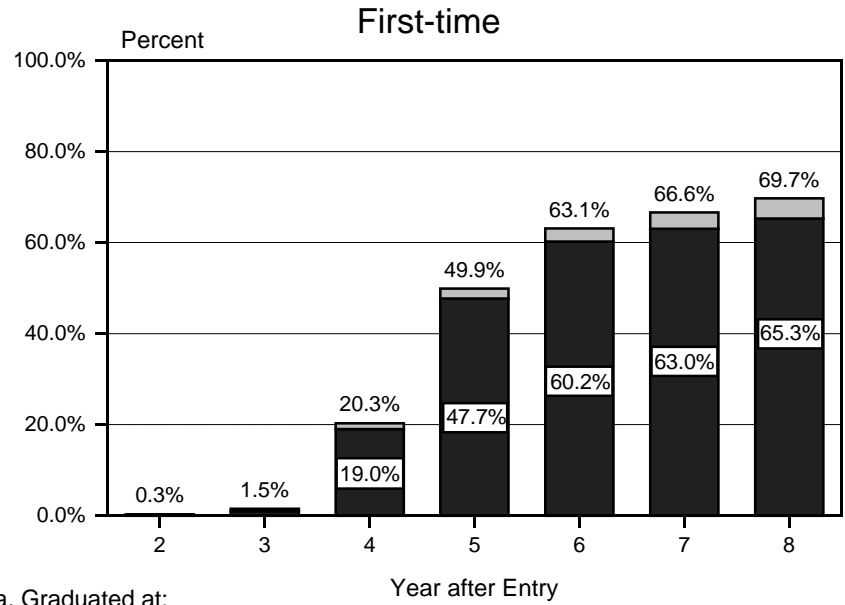
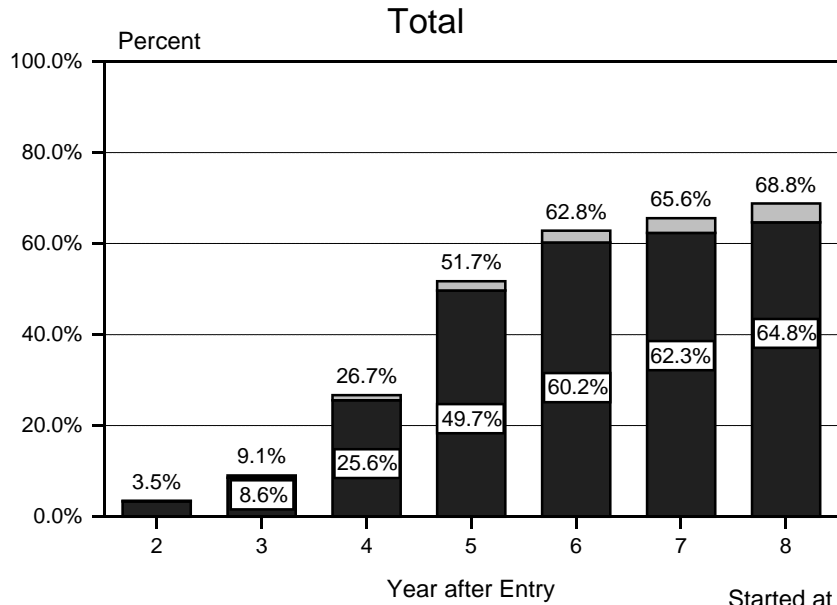
About 63% of entering students who started at Mānoa can be expected to graduate after six years. The majority of students take about five years to earn a degree, with very few students graduating beyond six years. Average time to graduate within a six-year period is 4.6 years.

About 83% of entering students re-enroll for the following year, while 12% are still enrolled at the end of six years. After eight years 5% are still enrolled systemwide.

Only about 3% of the Mānoa starters transfer and graduate from another UH campus. The majority who do so earn an associate degree from one of the UH community colleges.

Overall, students of Japanese and Chinese ancestry have the highest persistence and graduation rates, followed by students of Filipino ancestry. Students of Japanese and Hawaiian backgrounds take the longest to graduate, averaging 4.9 years over a six-year period. Caucasian students have the lowest 1-year persistence and 6-year graduation rates, but those who graduate over a six-year period average 3.9 years to do so, the shortest time of all other ethnic backgrounds.

Figure A-1
University of Hawai'i at Manoa
Average Graduation Rates, Fall 1987 to Fall 1995 Cohorts, as of Fall 1996



Started at Manoa, Graduated at:

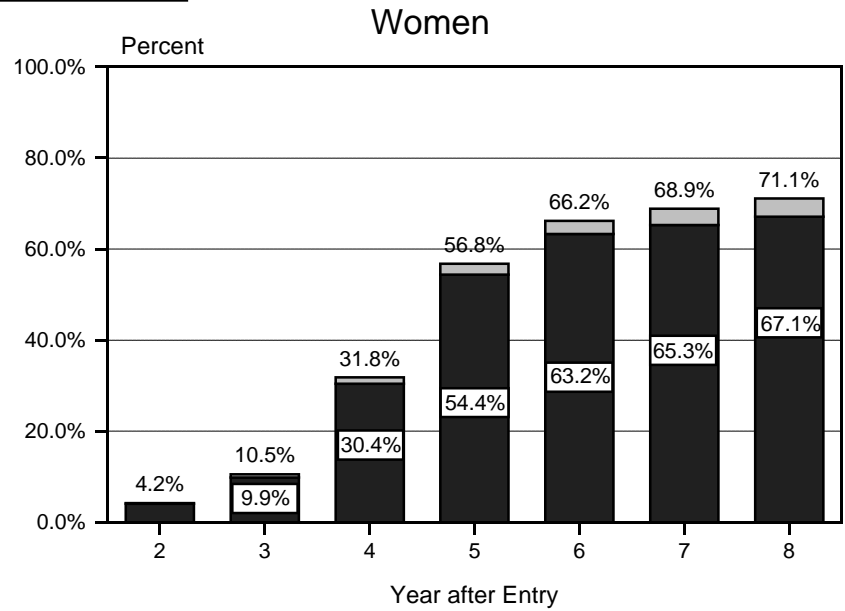
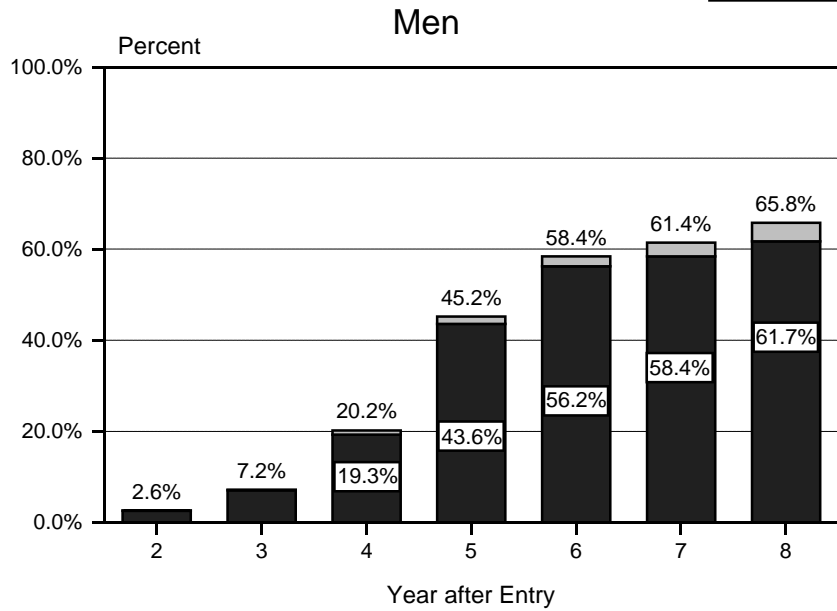
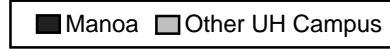


Figure A-2
University of Hawai'i at Manoa
Average Graduation Rates, Fall 1987 to Fall 1995 Cohorts, as of Fall 1996

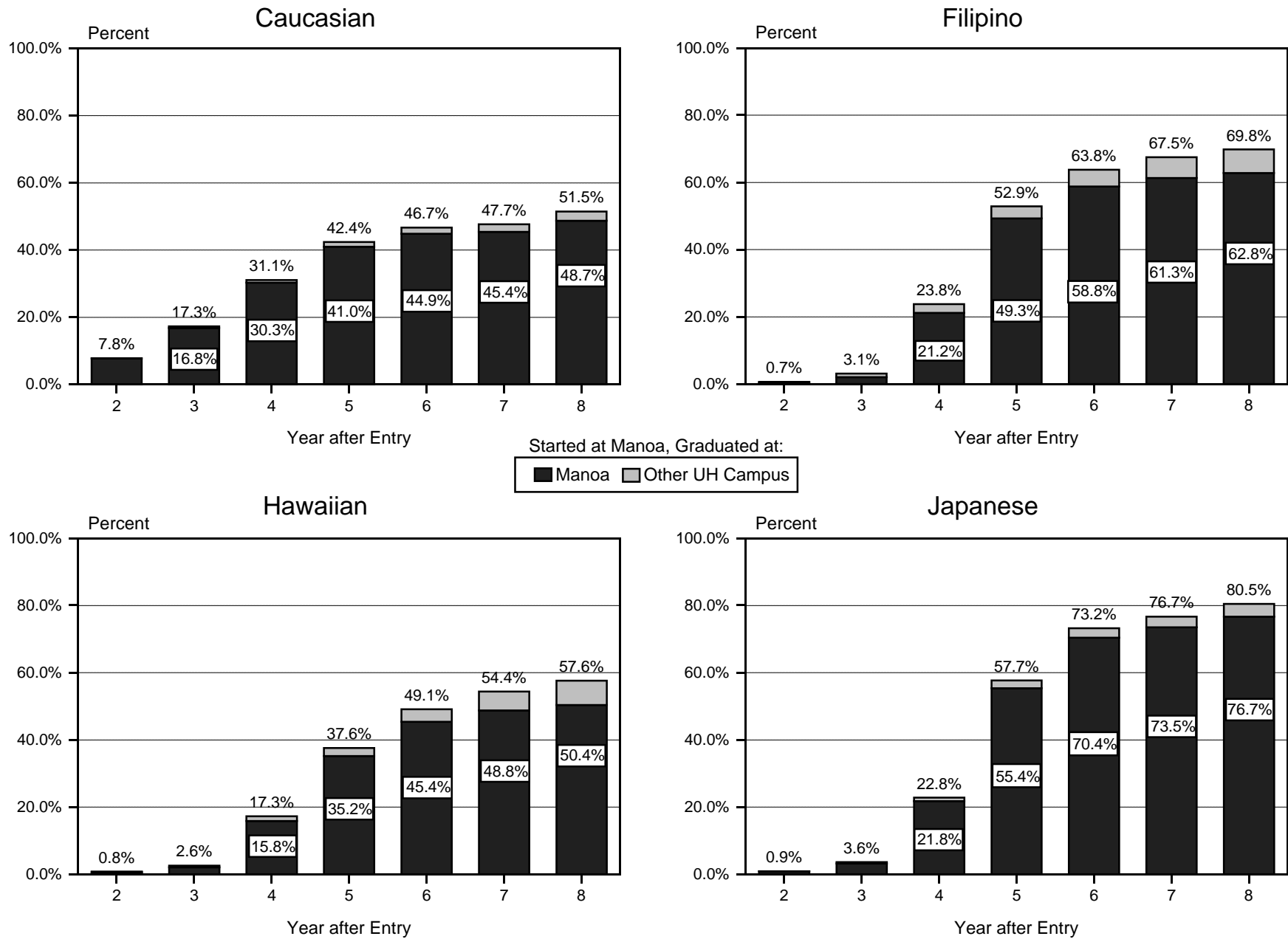


Table 1
AVERAGE GRADUATION RATES - as of Fall 1996
University of Hawai i at Manoa
Fall 1987 to Fall 1995 Cohorts, Degree-seekers only

Type of Rate and Characteristic	Avg Yrs to Grad in a 6-Yr Period	Average Graduation Rate Years After Entry						
		2	3	4	5	6	7	8
SYSTEMWIDE RATE.....	4.6	3.5	9.1	26.7	51.7	62.8	65.6	68.8
By Registration Status:								
First-time students.....	4.8	0.3	1.5	20.3	49.9	63.1	66.6	69.7
Bachelors awarded.....	4.9	0.2	0.9	18.8	47.8	60.4	63.2	65.7
Associate awarded.....	4.1	0.1	0.6	1.4	2.2	2.7	3.4	4.1
Non-UH Transfers.....	3.2	17.2	41.0	54.9	60.1	61.3	60.0	62.4
Bachelors awarded.....	3.2	17.1	40.8	54.5	59.3	60.6	58.8	61.2
Associate awarded.....	3.6	0.1	0.2	0.4	0.8	0.7	1.2	1.2
By Degree:								
Bachelors awarded.....	4.6	3.4	8.5	25.5	49.8	60.4	62.5	65.1
Associate awarded.....	4.1	0.1	0.6	1.2	1.9	2.4	3.1	3.7
By Gender:								
Men.....	4.7	2.6	7.2	20.2	45.2	58.4	61.4	65.8
Women.....	4.5	4.2	10.5	31.8	56.8	66.2	68.9	71.1
By Attendance Status:								
Full-time.....	4.6	3.4	8.6	27.1	53.3	64.7	67.5	70.6
Part-time.....	4.4	4.5	12.2	24.2	41.9	50.5	53.3	56.6
By Ethnicity:								
Japanese.....	4.9	0.9	3.6	22.8	57.7	73.2	76.7	80.5
Chinese.....	4.2	9.0	22.8	43.8	67.7	75.4	75.0	73.9
Filipino.....	4.7	0.7	3.1	23.8	52.9	63.8	67.5	69.8
Hawaiian.....	4.9	0.8	2.6	17.3	37.6	49.1	54.4	57.6
Caucasian.....	3.9	7.8	17.3	31.1	42.4	46.7	47.7	51.5
Mixed.....	4.6	2.1	6.6	23.4	46.0	55.1	56.8	63.3
All Other Categories.....	4.6	4.0	9.5	25.1	47.4	59.6	64.4	65.5
STARTING CAMPUS RATE....	4.6	3.4	8.6	25.6	49.7	60.2	62.3	64.8
By Registration Status:								
First-time students.....	4.9	0.2	1.0	19.0	47.7	60.2	63.0	65.3
Bachelors awarded.....	4.9	0.2	0.9	18.7	47.4	59.8	62.4	64.6
Associate awarded.....	3.7	0.0	0.2	0.5	0.5	0.5	0.5	0.7
Non-UH Transfers.....	3.1	17.1	40.7	54.3	59.0	60.0	58.4	60.7
Bachelors awarded.....	3.1	17.1	40.6	54.2	58.8	59.9	58.2	60.5
Associate awarded.....	3.0	0.0	0.3	0.3	0.3	0.3	0.3	0.2
By Degree:								
Bachelors awarded.....	4.6	3.4	8.5	25.3	49.4	59.8	61.8	64.1
Associate awarded.....	3.6	0.0	0.2	0.5	0.5	0.5	0.5	0.7
By Gender:								
Men.....	4.7	2.5	7.0	19.3	43.6	56.2	58.4	61.7
Women.....	4.5	4.1	9.9	30.4	54.4	63.2	65.3	67.1
By Attendance Status:								
Full-time.....	4.6	3.2	8.1	26.0	51.3	62.2	64.3	66.6
Part-time.....	4.4	4.5	12.0	23.1	39.6	47.0	49.1	52.0

Table 1 (cont.)

Type of Rate and Characteristic	Avg Yrs to Grad in a 6-Yr Period	Average Graduation Rate Years After Entry						
		2	3	4	5	6	7	8
By Ethnicity:								
Japanese.....	4.9	0.9	3.1	21.8	55.4	70.4	73.5	76.7
Chinese.....	4.2	9.0	22.6	43.3	67.0	74.2	73.4	72.0
Filipino.....	4.7	0.4	2.1	21.2	49.3	58.8	61.3	62.8
Hawaiian.....	4.9	0.6	2.1	15.8	35.2	45.4	48.8	50.4
Caucasian.....	3.9	7.7	16.8	30.3	41.0	44.9	45.4	48.7
Mixed.....	4.6	1.9	6.0	22.1	43.8	52.1	53.4	57.9
All Other Categories.....	4.6	4.0	8.9	24.2	45.7	57.6	61.0	61.9
OTHER UH CAMPUS RATE ...	4.4	0.1	0.5	1.1	2.0	2.7	3.3	4.1
By Registration Status:								
First-time students.....	4.5	0.1	0.5	1.3	2.2	2.9	3.6	4.4
Bachelors awarded.....	5.3	0.0	0.0	0.1	0.4	0.6	0.7	1.1
Associate awarded.....	4.2	0.1	0.5	1.2	1.8	2.3	2.9	3.4
Non-UH Transfers.....	4.1	0.1	0.3	0.6	1.1	1.2	1.5	1.6
Bachelors awarded.....	4.4	0.0	0.2	0.3	0.4	0.7	0.6	0.7
Associate awarded.....	3.8	0.1	0.2	0.3	0.7	0.5	0.9	0.9
By Degree:								
Bachelors awarded.....	5.1	0.0	0.0	0.1	0.4	0.6	0.7	1.0
Associate awarded.....	4.2	0.1	0.5	1.0	1.6	2.0	2.6	3.1
By Gender:								
Men.....	4.6	0.1	0.3	0.9	1.6	2.3	3.0	4.1
Women.....	4.3	0.1	0.7	1.4	2.4	2.9	3.6	4.0
By Attendance Status:								
Full-time.....	4.3	0.1	0.5	1.1	2.0	2.5	3.2	4.0
Part-time.....	4.8	0.0	0.3	1.2	2.3	3.5	4.2	4.5
By Ethnicity:								
Japanese.....	4.6	0.0	0.4	1.0	2.3	2.8	3.2	3.8
Chinese.....	4.5	0.0	0.2	0.5	0.8	1.2	1.7	2.0
Filipino.....	4.2	0.4	1.0	2.6	3.6	5.0	6.2	7.0
Hawaiian.....	4.3	0.2	0.5	1.4	2.4	3.7	5.6	7.2
Caucasian.....	4.3	0.1	0.5	0.8	1.4	1.8	2.3	2.9
Mixed.....	4.3	0.2	0.6	1.3	2.3	3.0	3.3	5.5
All Other Categories.....	4.6	0.0	0.6	0.9	1.7	2.0	3.3	3.7

Table 2a (cont.)

Characteristic and Cohort	Cohort Total	Avg Yrs to Grad in a 6-yr Period 1/	Systemwide Graduation Rates Years After Entry													
			2		3		4		5		6		7		8	
			No.	Rate	No.	Rate	No.	Rate	No.	Rate	No.	Rate	No.	Rate	No.	Rate
Hawaiian, part-Hawn		4.9		0.8		2.6		17.3		37.6		49.1		54.4		57.6
Fall 1987.....	85	4.8	1	1.2	2	2.4	13	15.3	34	40.0	41	48.2	44	51.8	46	54.1
Fall 1988.....	151	4.8	3	2.0	4	2.6	29	19.2	59	39.1	77	51.0	82	54.3	90	59.6
Fall 1989.....	141	4.8	1	0.7	2	1.4	21	14.9	59	41.8	72	51.1	79	56.0		
Fall 1990.....	136	5.0	1	0.7	2	1.5	19	14.0	38	27.9	62	45.6				
Fall 1991.....	192	NA	1	0.5	6	3.1	35	18.2	75	39.1						
Fall 1992.....	192	NA			4	2.1	38	19.8								
Fall 1993.....	185	NA	3	1.6	8	4.3										
Fall 1994.....	215	NA														
Caucasian		3.9		7.8		17.3		31.1		42.4		46.7		47.7		51.5
Fall 1987.....	272	4.3	14	5.1	27	9.9	59	21.7	99	36.4	117	43.0	122	44.9	130	47.8
Fall 1988.....	359	4.0	21	5.8	55	15.3	117	32.6	165	46.0	183	51.0	193	53.8	195	54.3
Fall 1989.....	335	3.9	24	7.2	50	14.9	93	27.8	127	37.9	139	41.5	146	43.6		
Fall 1990.....	308	3.6	37	12.0	73	23.7	111	36.0	142	46.1	156	50.6				
Fall 1991.....	346	NA	25	7.2	63	18.2	117	33.8	154	44.5						
Fall 1992.....	292	NA	28	9.6	60	20.5	98	33.6								
Fall 1993.....	322	NA	27	8.4	59	18.3										
Fall 1994.....	262	NA	19	7.3												
Mixed		4.6		2.1		6.6		23.4		46.0		55.1		56.8		63.3
Fall 1987.....	139	4.7	1	0.7	4	2.9	28	20.1	59	42.4	71	51.1	75	54.0	82	59.0
Fall 1988.....	172	4.5	3	1.7	15	8.7	46	26.7	93	54.1	107	62.2	113	65.7	115	66.9
Fall 1989.....	198	4.7	1	0.5	7	3.5	37	18.7	76	38.4	93	47.0	101	51.0		
Fall 1990.....	128	4.6	3	2.3	8	6.3	36	28.1	67	52.3	80	62.5				
Fall 1991.....	160	NA	8	5.0	17	10.6	39	24.4	72	45.0						
Fall 1992.....	185	NA	5	2.7	15	8.1	44	23.8								
Fall 1993.....	181	NA	3	1.7	11	6.1										
Fall 1994.....	191	NA	5	2.6												
Other		4.6		4.0		9.5		25.1		47.4		59.6		64.4		65.5
Fall 1987.....	169	4.7	1	0.6	5	3.0	39	23.1	83	49.1	101	59.8	110	65.1	111	65.7
Fall 1988.....	214	4.6	5	2.3	14	6.5	51	23.8	109	50.9	129	60.3	133	62.1	140	65.4
Fall 1989.....	246	4.6	6	2.4	20	8.1	62	25.2	122	49.6	153	62.2	162	65.9		
Fall 1990.....	177	4.5	6	3.4	17	9.6	41	23.2	82	46.3	97	54.8				
Fall 1991.....	323	NA	14	4.3	29	9.0	64	19.8	139	43.0						
Fall 1992.....	321	NA	23	7.2	49	15.3	107	33.3								
Fall 1993.....	344	NA	9	2.6	36	10.5										
Fall 1994.....	317	NA	20	6.3												

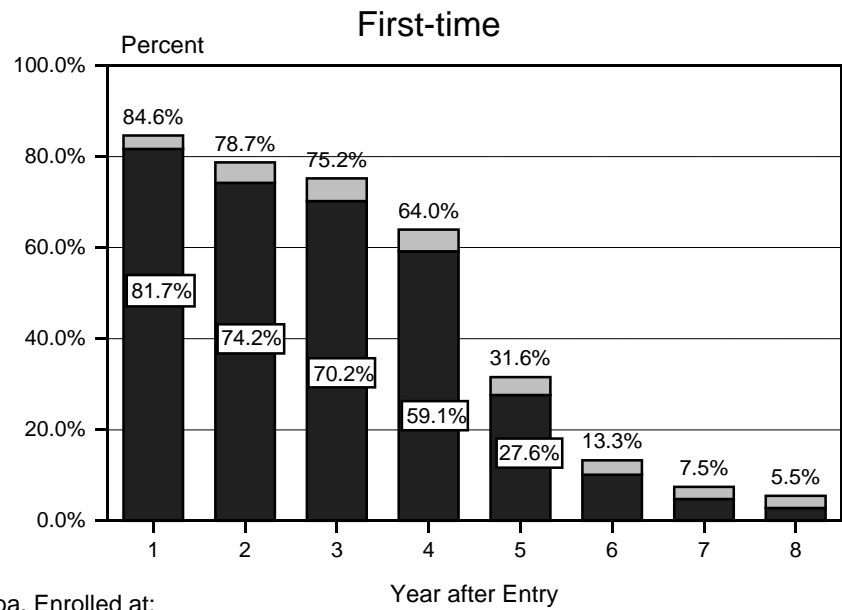
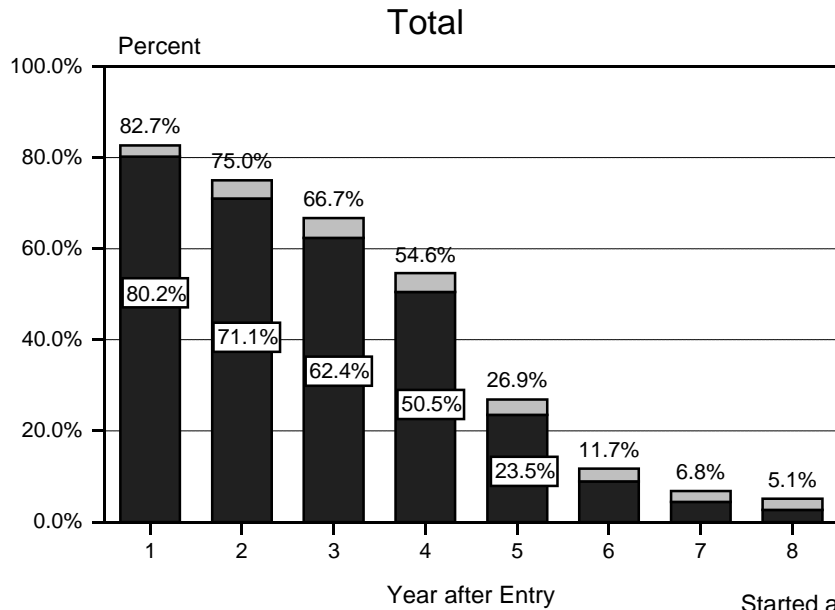
1/ Average years to graduate in a six-year period can only be calculated for those cohorts that have been enrolled for six years or more. Therefore, data is available for the Fall 1987 to Fall 1990 entering cohorts only.

Table 2b (cont.)

Characteristic and Cohort	Cohort Total	Avg Yrs to Grad in a 6-yr Period 1/	Starting Campus Graduation Rates Years After Entry													
			2		3		4		5		6		7		8	
			No.	Rate	No.	Rate	No.	Rate	No.	Rate	No.	Rate	No.	Rate	No.	Rate
Hawaiian, part-Hawn		4.9		0.6		2.1		15.8		35.2		45.4		48.8		50.4
Fall 1987.....	85	4.8	1	1.2	1	1.2	11	12.9	32	37.6	38	44.7	40	47.1	42	49.4
Fall 1988.....	151	4.8	2	1.3	3	2.0	26	17.2	55	36.4	72	47.7	74	49.0	77	51.0
Fall 1989.....	141	4.9	1	0.7	1	0.7	18	12.8	52	36.9	65	46.1	70	49.6		
Fall 1990.....	136	5.1			1	0.7	17	12.5	35	25.7	58	42.6				
Fall 1991.....	192	NA	1	0.5	5	2.6	34	17.7	74	38.5						
Fall 1992.....	192	NA			4	2.1	36	18.8								
Fall 1993.....	185	NA	3	1.6	8	4.3										
Fall 1994.....	215	NA														
Caucasian		3.9		7.7		16.8		30.3		41.0		44.9		45.4		48.7
Fall 1987.....	272	4.3	12	4.4	23	8.5	54	19.9	93	34.2	109	40.1	114	41.9	120	44.1
Fall 1988.....	359	4.0	21	5.8	55	15.3	114	31.8	160	44.6	176	49.0	185	51.5	187	52.1
Fall 1989.....	335	3.9	24	7.2	48	14.3	91	27.2	123	36.7	135	40.3	140	41.8		
Fall 1990.....	308	3.6	37	12.0	72	23.4	109	35.4	140	45.5	152	49.4				
Fall 1991.....	346	NA	24	6.9	62	17.9	115	33.2	149	43.1						
Fall 1992.....	292	NA	28	9.6	59	20.2	96	32.9								
Fall 1993.....	322	NA	27	8.4	57	17.7										
Fall 1994.....	262	NA	19	7.3												
Mixed		4.6		1.9		6.0		22.1		43.8		52.1		53.4		57.9
Fall 1987.....	139	4.8			2	1.4	25	18.0	56	40.3	68	48.9	71	51.1	75	54.0
Fall 1988.....	172	4.6	3	1.7	13	7.6	41	23.8	87	50.6	100	58.1	105	61.0	105	61.0
Fall 1989.....	198	4.7	1	0.5	6	3.0	35	17.7	73	36.9	88	44.4	96	48.5		
Fall 1990.....	128	4.6	3	2.3	8	6.3	35	27.3	64	50.0	76	59.4				
Fall 1991.....	160	NA	6	3.8	15	9.4	37	23.1	69	43.1						
Fall 1992.....	185	NA	5	2.7	15	8.1	44	23.8								
Fall 1993.....	181	NA	3	1.7	11	6.1										
Fall 1994.....	191	NA	5	2.6												
Other		4.6		4.0		8.9		24.2		45.7		57.6		61.0		61.9
Fall 1987.....	169	4.7	1	0.6	4	2.4	37	21.9	79	46.7	96	56.8	104	61.5	105	62.1
Fall 1988.....	214	4.6	5	2.3	14	6.5	51	23.8	106	49.5	125	58.4	127	59.3	132	61.7
Fall 1989.....	246	4.6	6	2.4	18	7.3	57	23.2	117	47.6	146	59.3	153	62.2		
Fall 1990.....	177	4.5	6	3.4	17	9.6	41	23.2	82	46.3	97	54.8				
Fall 1991.....	323	NA	14	4.3	27	8.4	61	18.9	132	40.9						
Fall 1992.....	321	NA	23	7.2	47	14.6	104	32.4								
Fall 1993.....	344	NA	9	2.6	33	9.6										
Fall 1994.....	317	NA	20	6.3												

1/ Average years to graduate in a six-year period can only be calculated for those cohorts that have been enrolled for six years or more. Therefore, data is available for the Fall 1987 to Fall 1990 entering cohorts only.

Figure B-1
University of Hawai'i at Manoa
Average Persistence Rates, Fall 1987 to Fall 1995 Cohorts, as of Fall 1996



Started at Manoa, Enrolled at:

Manoa
 Other UH Campus

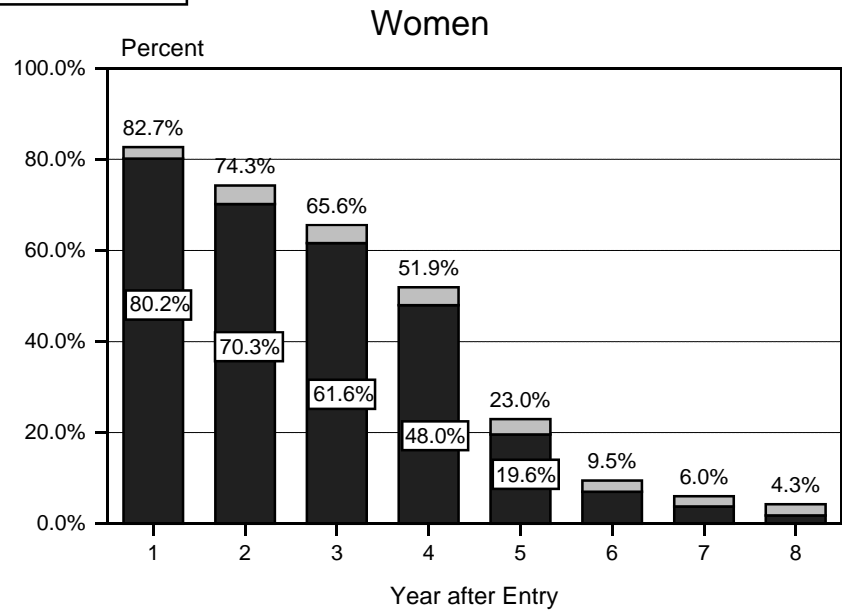
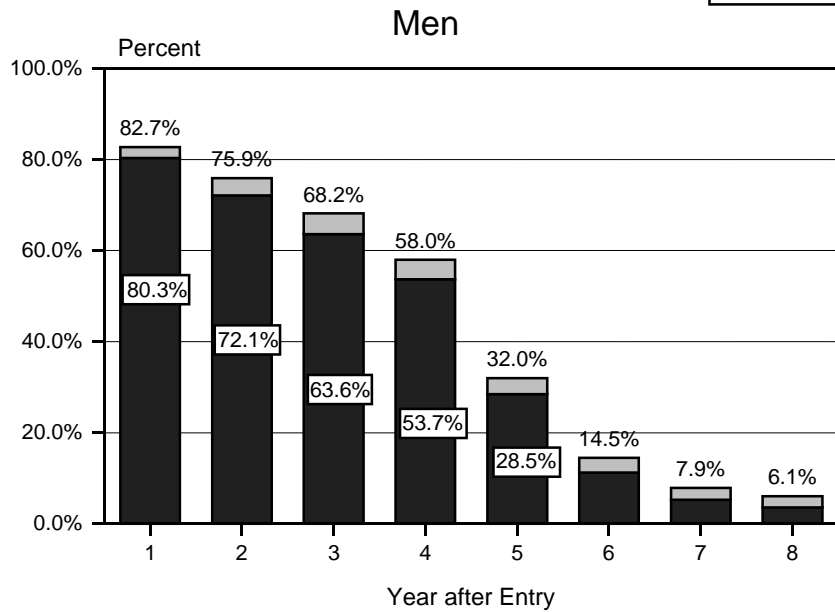
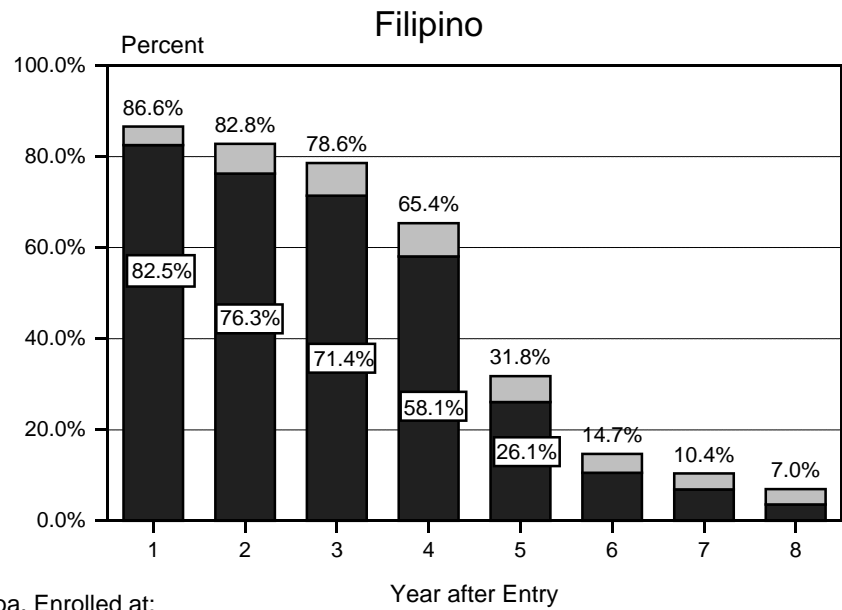
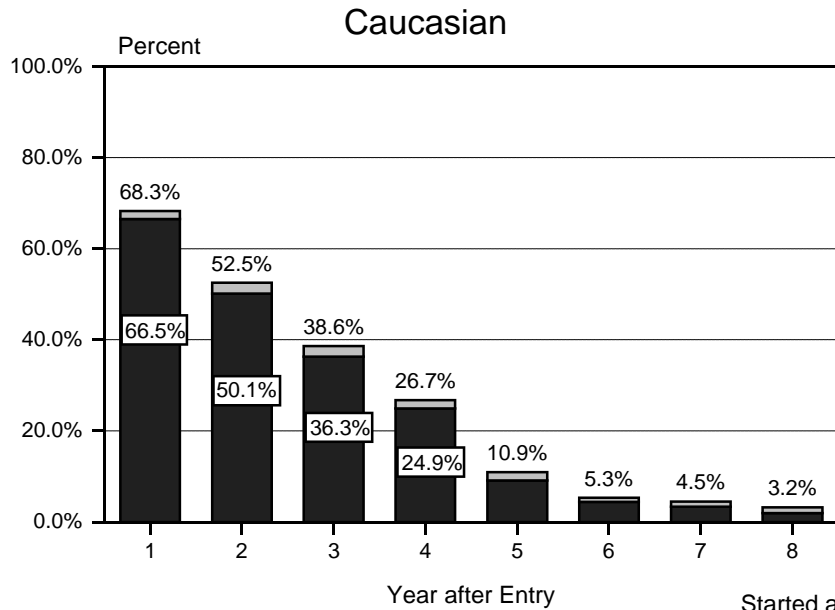


Figure B-2
University of Hawai'i at Manoa
Average Persistence Rates, Fall 1987 to Fall 1995 Cohorts, as of Fall 1996



Started at Manoa, Enrolled at:
 Manoa
 Other UH Campus

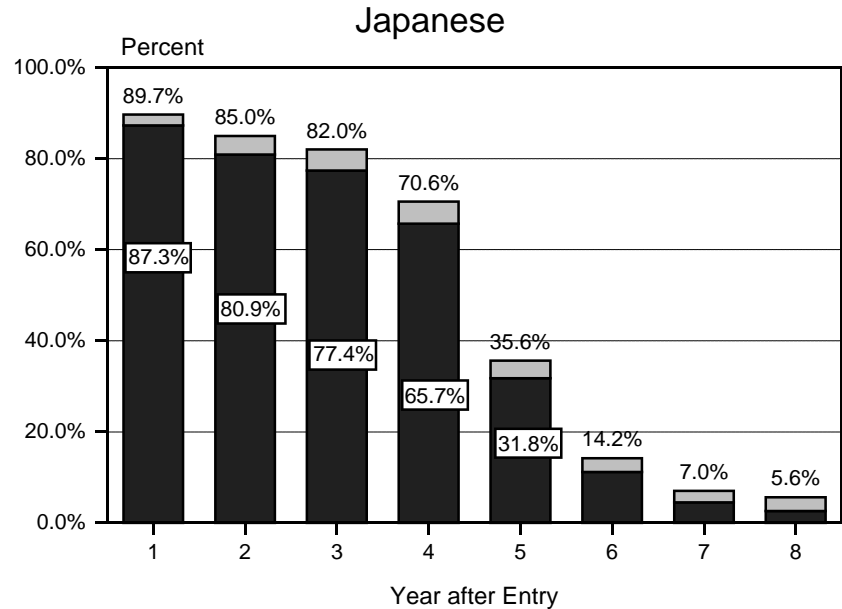
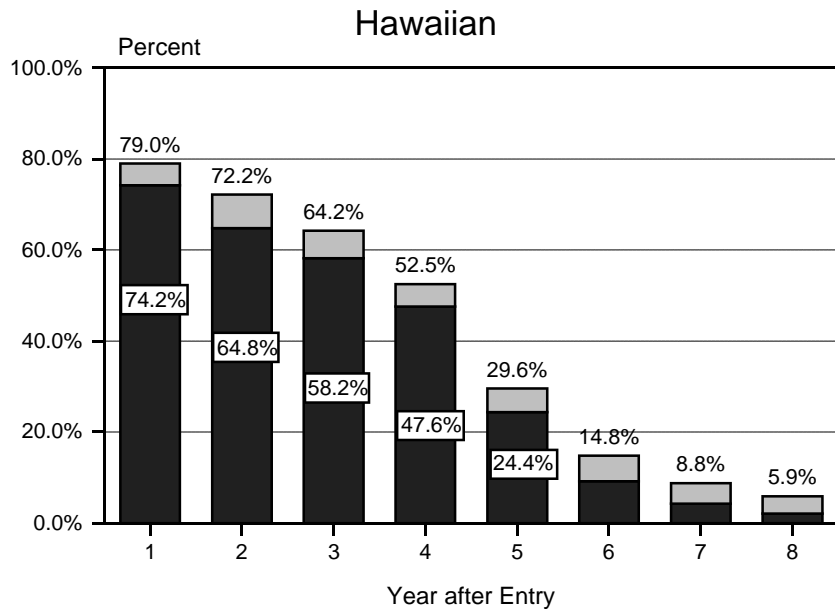


Table 3
AVERAGE PERSISTENCE RATES - as of Fall 1996
University of Hawai i at Manoa
Fall 1987 to Fall 1995 Cohorts, Degree-seekers only

Type of Rate and Characteristic	Average Persistence Rate							
	Years After Entry							
	1	2	3	4	5	6	7	8
SYSTEMWIDE RATE.....	82.7	75.0	66.7	54.6	26.9	11.7	6.8	5.1
By Registration Status:								
First-time students.....	84.6	78.7	75.2	64.0	31.6	13.3	7.5	5.5
Intended degree: Bachelors.....	81.9	74.5	70.6	59.9	28.3	10.8	5.4	3.2
Intended degree: Associate.....	2.7	4.2	4.6	4.0	3.3	2.4	2.1	2.3
Non-UH Transfers.....	74.9	59.2	31.0	13.4	5.2	3.4	2.7	2.1
Intended degree: Bachelors.....	74.2	58.2	30.2	12.7	4.3	2.7	2.4	1.2
Intended degree: Associate.....	0.7	1.0	0.8	0.6	0.9	0.7	0.3	0.9
By Intended Degree:								
Bachelors.....	80.4	71.4	62.9	51.2	24.1	9.5	5.0	2.9
Associate.....	2.3	3.6	3.8	3.4	2.8	2.2	1.8	2.2
By Gender:								
Men.....	82.7	75.9	68.2	58.0	32.0	14.5	7.9	6.1
Women.....	82.7	74.3	65.6	51.9	23.0	9.5	6.0	4.3
By Attendance Status:								
Full-time.....	84.0	76.5	68.8	56.4	27.4	11.6	6.7	5.2
Part-time.....	73.8	65.6	53.8	43.3	23.7	12.0	7.7	4.3
By Ethnicity:								
Japanese.....	89.7	85.0	82.0	70.6	35.6	14.2	7.0	5.6
Chinese.....	89.4	81.2	65.9	51.1	21.2	8.9	5.1	3.5
Filipino.....	86.6	82.8	78.6	65.4	31.8	14.7	10.4	7.0
Hawaiian.....	79.0	72.2	64.2	52.5	29.6	14.8	8.8	5.9
Caucasian.....	68.3	52.5	38.6	26.7	10.9	5.3	4.5	3.2
Mixed.....	79.9	71.9	64.3	50.8	24.0	14.6	7.9	4.8
All Other Categories.....	80.6	73.3	63.1	52.1	29.5	10.0	6.7	6.3
STARTING CAMPUS RATE.....	80.2	71.1	62.4	50.5	23.5	8.9	4.4	2.6
By Registration Status:								
First-time students.....	81.7	74.2	70.2	59.1	27.6	10.1	4.8	2.8
Intended degree: Bachelors.....	81.6	74.1	70.1	59.1	27.6	10.1	4.8	2.8
Intended degree: Associate.....	0.1	0.2	0.1	0.0	0.0	0.0	0.0	0.0
Non-UH Transfers.....	74.1	57.8	29.9	12.6	4.1	2.5	2.3	1.2
Intended degree: Bachelors.....	74.0	57.7	29.9	12.6	4.1	2.5	2.3	1.2
Intended degree: Associate.....	0.3	0.3	0.0	0.0	0.0	0.0	0.0	0.0
By Intended Degree:								
Bachelors.....	80.2	71.0	62.4	50.5	23.5	8.9	4.4	2.6
Associate.....	0.1	0.2	0.1	0.0	0.0	0.0	0.0	0.0
By Gender:								
Men.....	80.3	72.1	63.6	53.7	28.5	11.3	5.3	3.6
Women.....	80.2	70.3	61.6	48.0	19.6	7.0	3.8	1.8
By Attendance Status:								
Full-time.....	81.6	72.6	64.6	52.4	24.0	9.0	4.4	2.7
Part-time.....	70.5	60.8	48.7	39.0	20.1	8.3	4.9	1.6

Table 3 (cont.)

Type of Rate and Characteristic	Average Persistence Rate Years After Entry							
	1	2	3	4	5	6	7	8
By Ethnicity:								
Japanese.....	87.3	80.9	77.4	65.7	31.8	11.2	4.5	2.6
Chinese.....	88.3	79.2	63.9	48.9	19.4	7.7	4.0	2.0
Filipino.....	82.5	76.3	71.4	58.1	26.1	10.6	6.9	3.7
Hawaiian.....	74.2	64.8	58.2	47.6	24.4	9.2	4.2	2.1
Caucasian.....	66.5	50.1	36.3	24.9	9.1	4.4	3.3	1.9
Mixed.....	77.7	67.5	59.9	46.8	20.8	10.4	5.1	1.9
All Other Categories.....	78.5	70.5	58.6	48.3	25.9	7.6	4.1	3.9
OTHER UH CAMPUS RATE	2.5	4.0	4.3	4.1	3.5	2.8	2.4	2.5
By Registration Status:								
First-time students.....	2.9	4.6	5.0	4.8	4.0	3.2	2.7	2.7
Intended degree: Bachelors.....	0.3	0.4	0.5	0.8	0.7	0.7	0.6	0.4
Intended degree: Associate.....	2.6	4.1	4.5	4.0	3.3	2.4	2.1	2.3
Non-UH Transfers.....	0.8	1.4	1.1	0.8	1.1	0.9	0.4	0.9
Intended degree: Bachelors.....	0.2	0.4	0.3	0.1	0.3	0.2	0.1	0.0
Intended degree: Associate.....	0.7	1.0	0.8	0.6	0.9	0.7	0.3	0.9
By Intended Degree:								
Bachelors.....	0.2	0.4	0.5	0.7	0.6	0.6	0.6	0.3
Associate.....	2.3	3.5	3.8	3.4	2.8	2.2	1.8	2.2
By Gender:								
Men.....	2.5	3.8	4.6	4.3	3.6	3.2	2.6	2.5
Women.....	2.5	4.1	4.0	3.9	3.4	2.4	2.2	2.5
By Attendance Status:								
Full-time.....	2.4	3.9	4.2	4.0	3.4	2.6	2.3	2.5
Part-time.....	3.3	4.8	5.0	4.3	3.6	3.7	2.8	2.7
By Ethnicity:								
Japanese.....	2.5	4.1	4.7	4.9	3.8	3.0	2.6	3.0
Chinese.....	1.0	2.0	2.0	2.2	1.9	1.2	1.2	1.5
Filipino.....	4.1	6.5	7.1	7.3	5.7	4.1	3.5	3.4
Hawaiian.....	4.8	7.3	6.0	4.9	5.2	5.7	4.5	3.8
Caucasian.....	1.8	2.4	2.3	1.8	1.8	0.9	1.1	1.3
Mixed.....	2.2	4.4	4.4	4.0	3.1	4.2	2.8	2.9
All Other Categories.....	2.1	2.8	4.5	3.9	3.6	2.5	2.5	2.3

