

HIGH SCHOOL BACKGROUND OF FIRST-TIME STUDENTS

UNIVERSITY OF HAWAI'I

FALL 2001

Institutional Research Office

University of Hawai'i

May 2002

File Reference: Management and Planning Support Folder, Students

Reports available online at: <http://www.hawaii.edu/iro/maps.htm>

HIGH SCHOOL BACKGROUND OF FIRST-TIME STUDENTS UNIVERSITY OF HAWAI'I, FALL 2001

Total first-time student enrollment for the UH system measured 7,594 for Fall 2001, an increase of 7.2% over Fall 2000 (Table 1). Total first-time students from Hawai'i measured 5,574 in Fall 2001, an increase of 2.7% over Fall 2000. Overall, however, total first-time student enrollment has declined since the early 1990s (Table 1A & Figure 1).

The going rate of recent high school graduates into the UH system has also declined since the early 1990s, reaching a record low of 31.7% in Fall 2001 (Table 4 & Figure 7). Going rates at the four-year campuses and the UH system dropped in Fall 1996 and have continued to decline (Figures 9 to 11). Going rates at the UH Community Colleges have been more stable, but have shown little or no overall growth (Figures 11 to 14).

Other highlights include the following:

- ! First-Time students from the U.S. Mainland & Possessions measured 1,122 in Fall 2001, 14.8% of the total and the highest number in at least 10 years (Table 1A, Table 4 & Figure 2). Although the overwhelming majority of first-time students are from Hawai'i (73.4%), recruiting efforts may continue to yield higher numbers of first-time students from out-of-state in the years ahead.
- ! For the UH System in Fall 2001, first-time students from Hawai'i who were recent high school graduates (i.e. enrolled in college in the fall semester immediately following graduation from high school) measured 4,102, a decline of 5.7% from Fall 2000 (Table 4 & Figure 3). This number is the lowest on record (going back to 1982).
- ! First-time freshmen who were recent high school graduates dropped markedly in Fall 1996 at UH Mānoa (Table 4 & Figure 4). The number enrolled has remained at or near this level since. Enrollment of recent high school graduates at UH Hilo has been in steady decline since Fall 1994 (Table 4 & Figure 5). Enrollment of recent high school graduates at the UH Community Colleges has been more stable, but measured 2,624 in Fall 2001, the lowest level in over ten years (Table 4 & Figure 6).
- ! The number of high school graduates for the State of Hawai'i in June 2001 measured 12,945, a 3.2% decline from June 2000 (Table 4 & Figure 8). High school graduates have measured above 12,300 since Fall 1994, and therefore cannot account for the decline in recent high school graduates enrolling at UH campuses over this period.
- ! In June 2001, students graduated from three Hawai'i Public Charter high schools (Appendix 1). Of the 22 graduates from these schools, only 1 attended a UH campus in Fall 2001 (Table 3). Thirteen Charter schools with grade 12 enrollment were operating in Academic Year 2000-01. More graduates from the Charter schools can be anticipated in the near future. Whether these students will choose to attend UH campuses is an open question.

First-Time Students at the University of Hawai'i

Figure 1
Total First-Time Students, by Geographic Origin
University of Hawai'i System

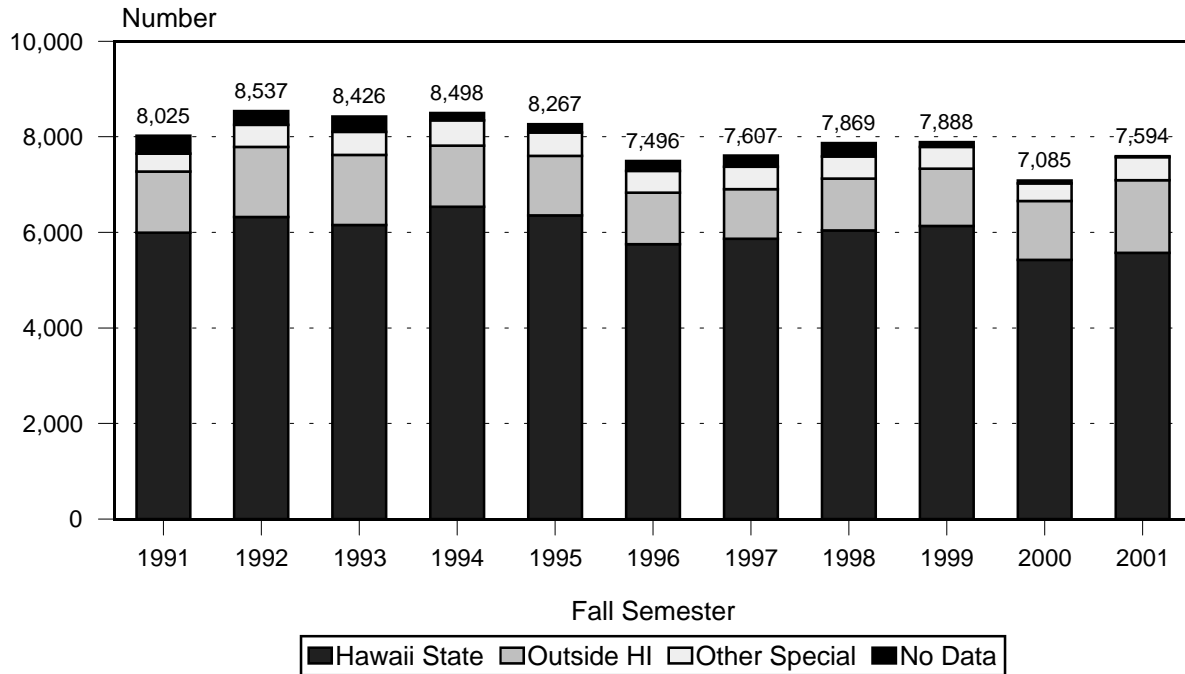
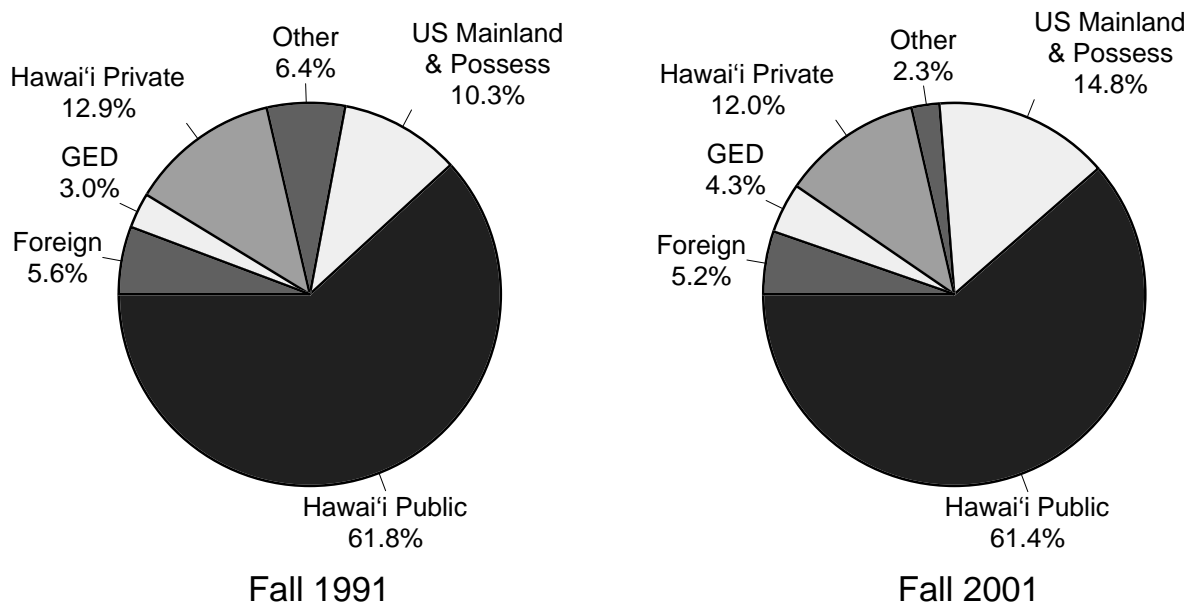


Figure 2
Hawai'i State High School Graduates
By Geographic Origin



First-Time Students at the University of Hawai'i

Figure 3
First-Time Students, Recent High School Graduates
University of Hawai'i System

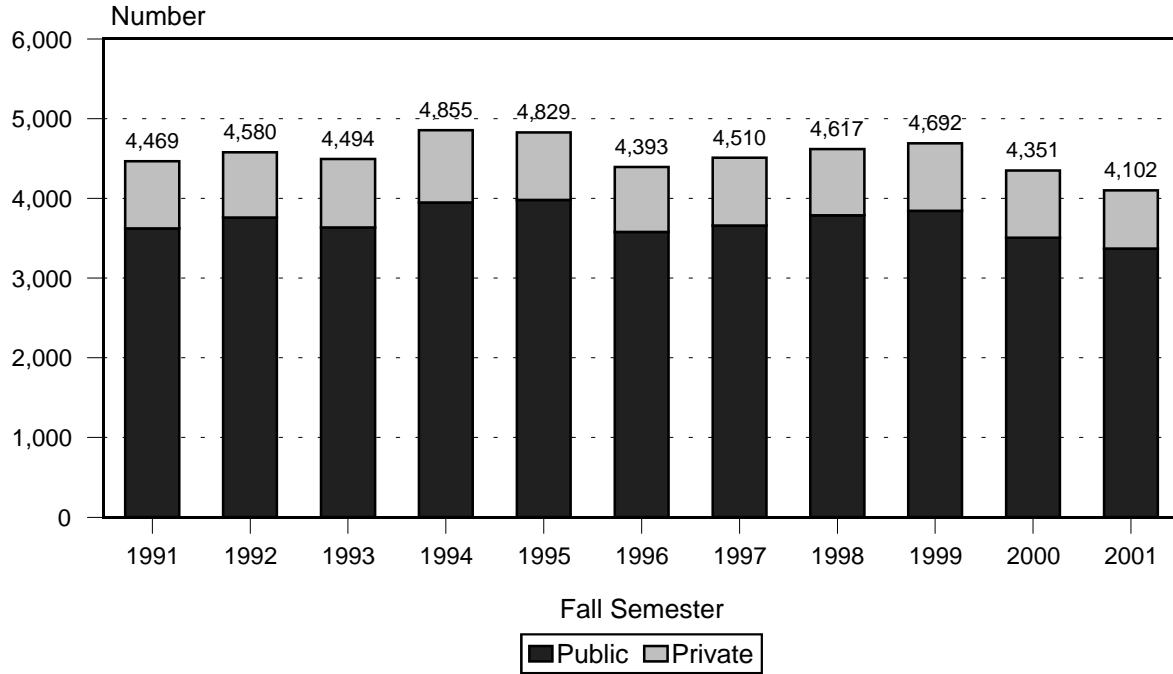
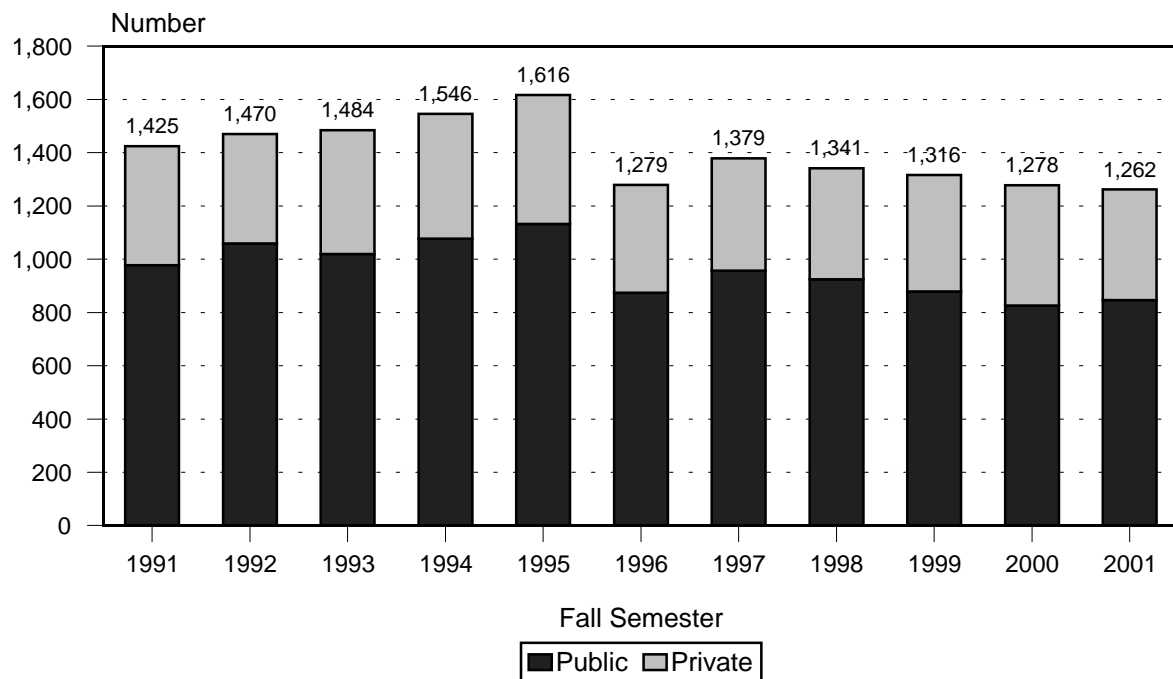


Figure 4
First-Time Freshmen, Recent High School Graduates
University of Hawai'i at Manoa



First-Time Students at the University of Hawai'i

Figure 5
First-Time Freshmen, Recent High School Graduates
University of Hawai'i at Hilo

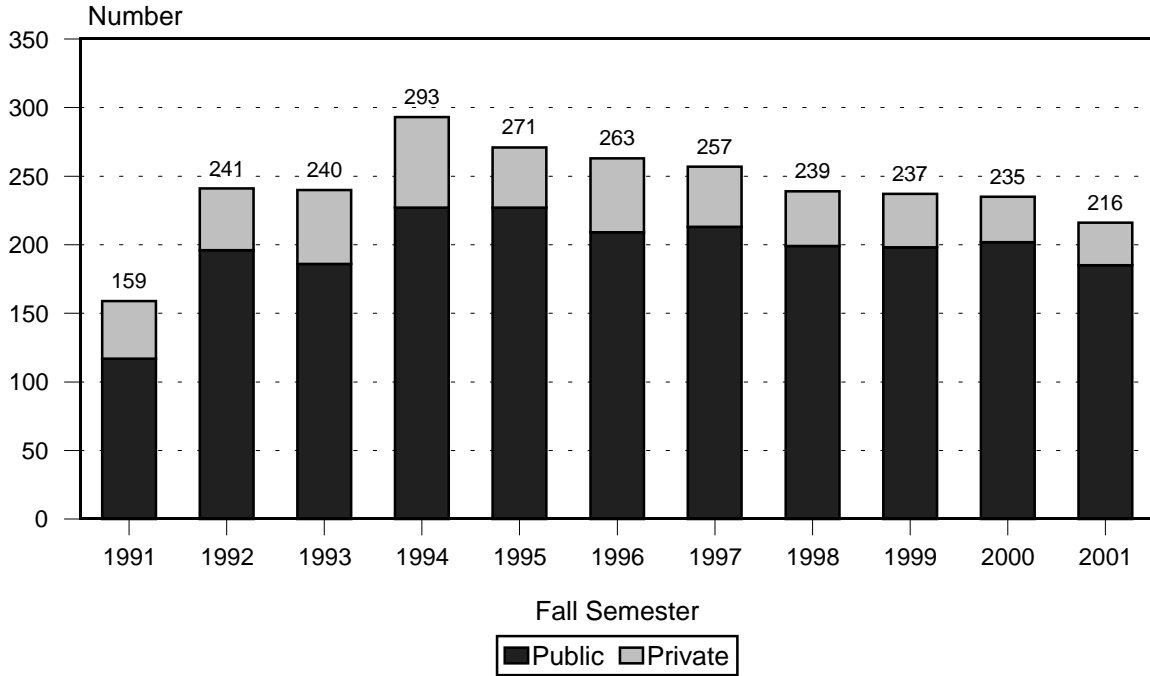
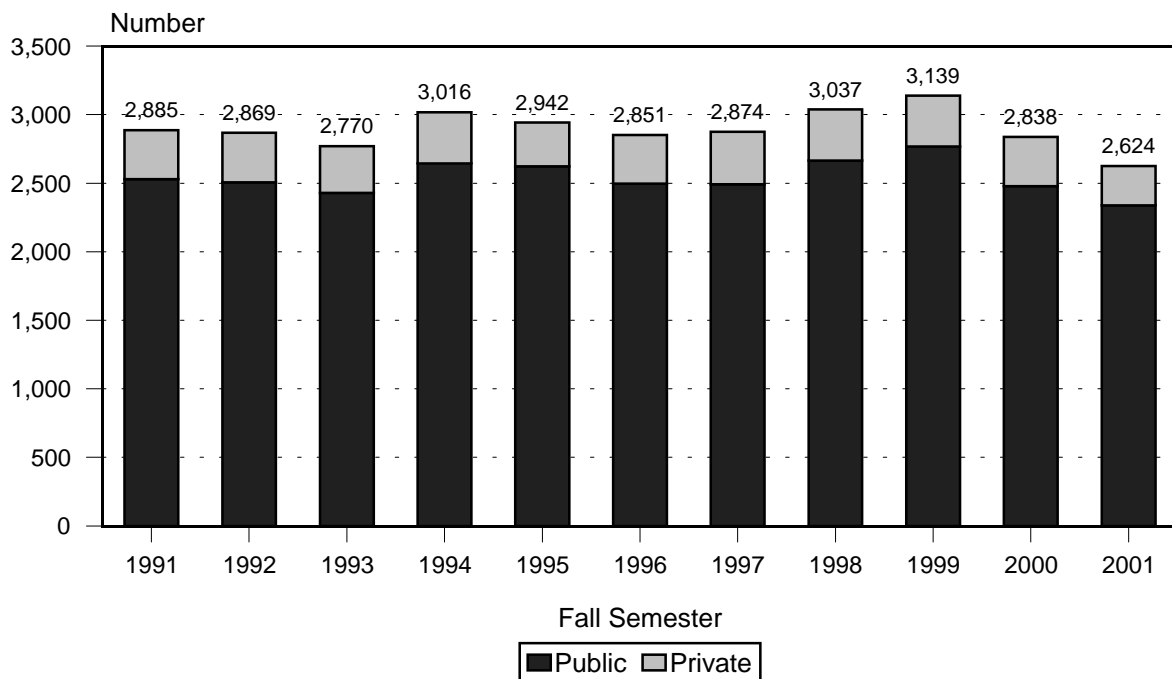
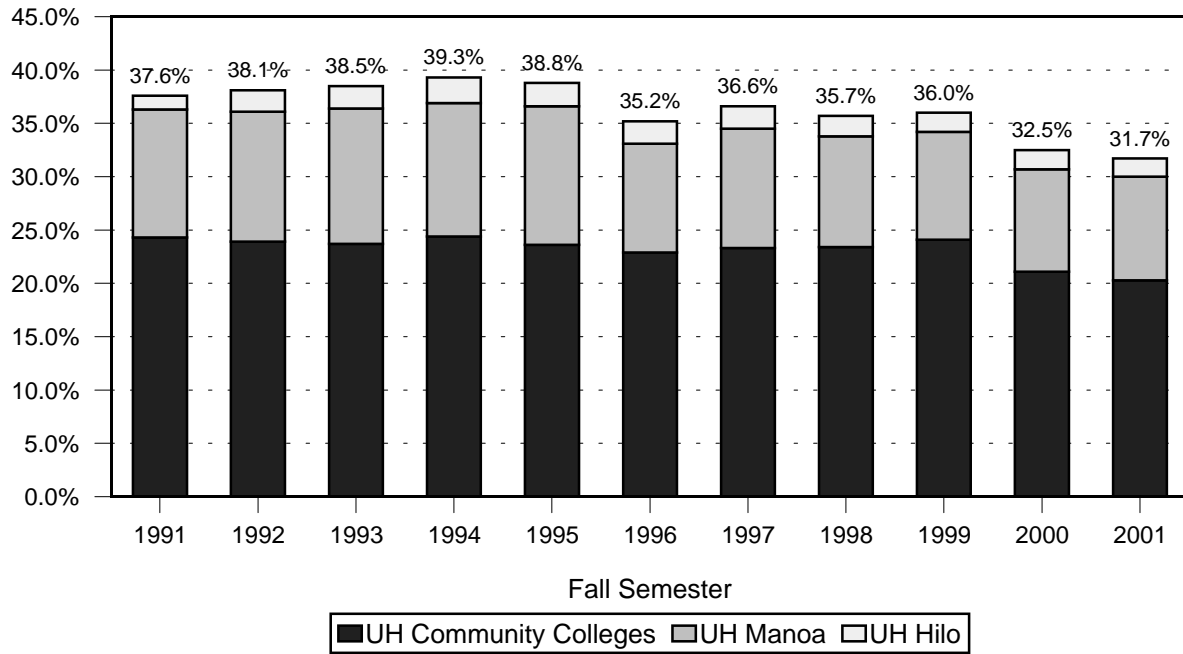


Figure 6
First-Time Students, Recent High School Graduates
UH Community Colleges



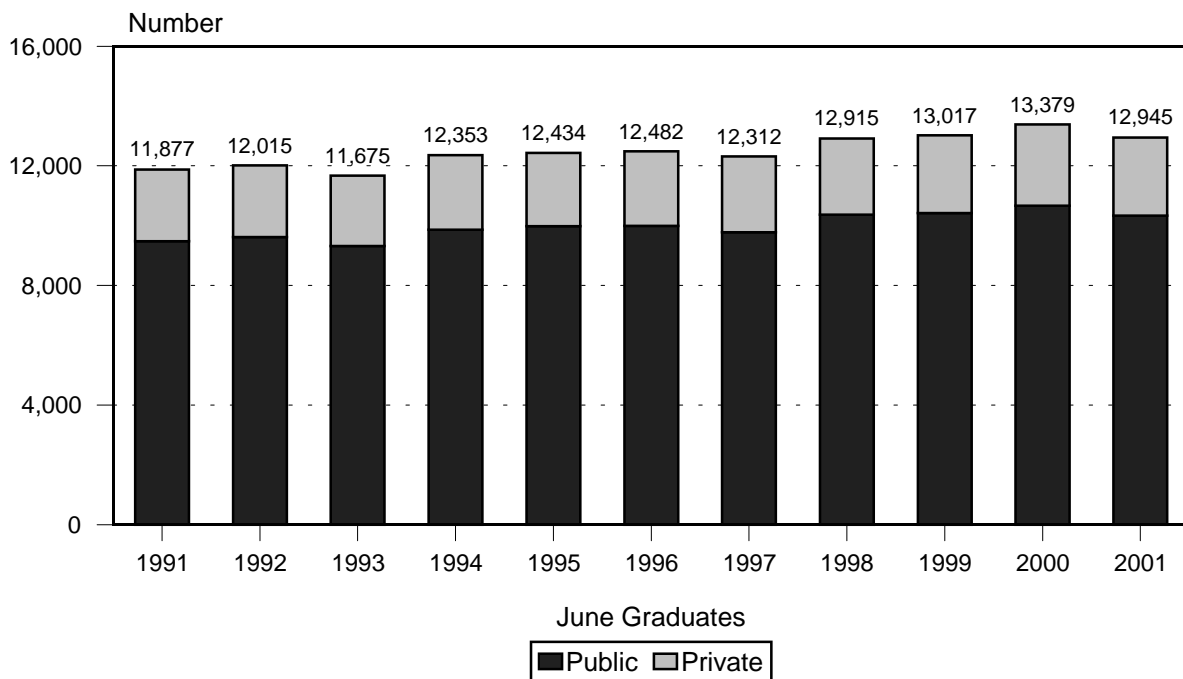
Going Rates Into the University of Hawai'i

Figure 7
Going Rates by UH Unit, Historical



Note: Bars stack to show UH system going rate.

Figure 8
Hawai'i State High School Graduates
By Public and Private High School



Going Rates Into the University of Hawai'i

Figure 9
Total Going Rates - Historical
UH System and UHCC System

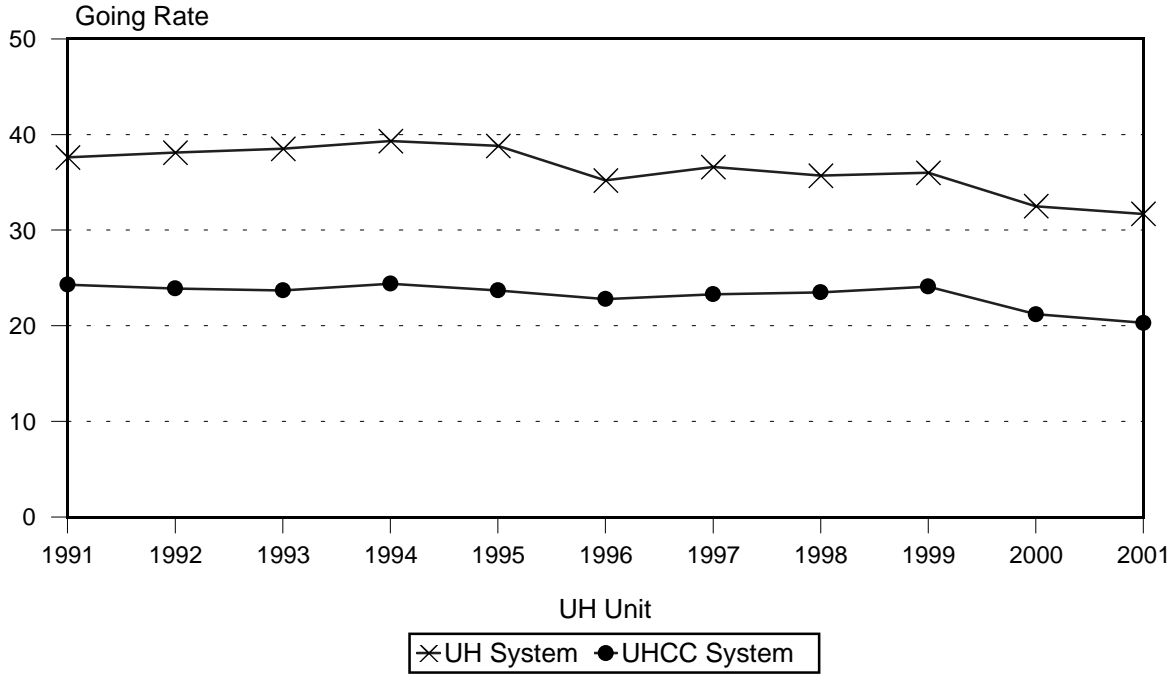
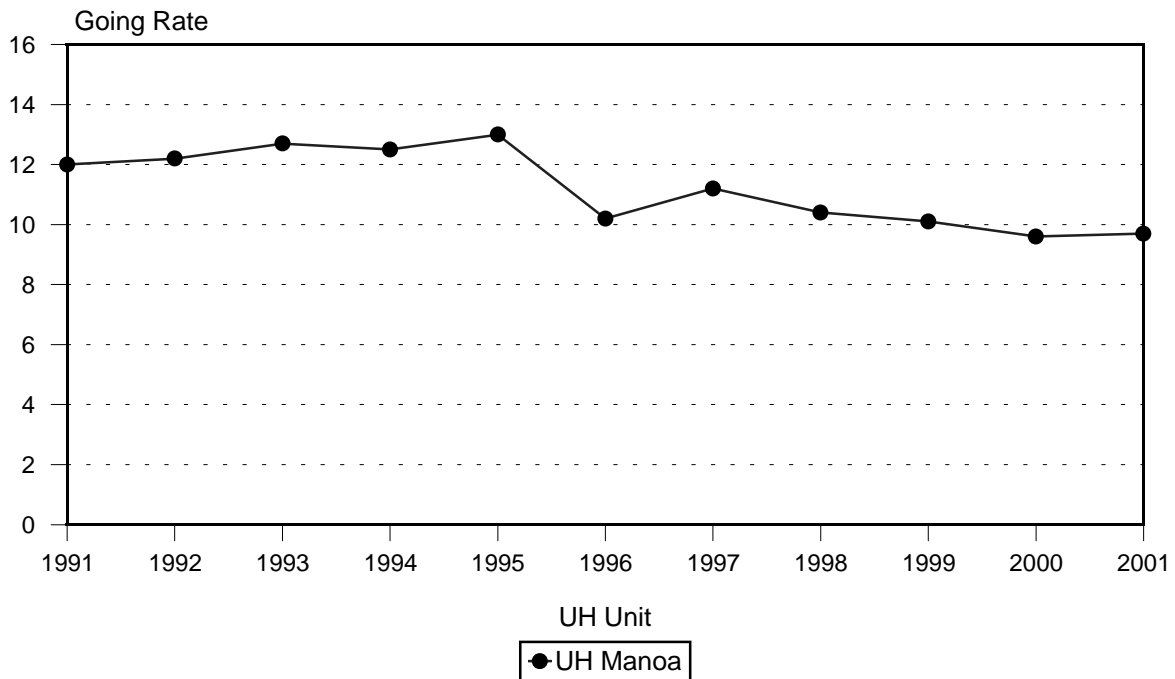


Figure 10
Total Going Rates - Historical
UH Manoa



Going Rates Into the University of Hawai'i

Figure 11
Total Going Rates - Historical
UH Hilo and Hawai'i CC

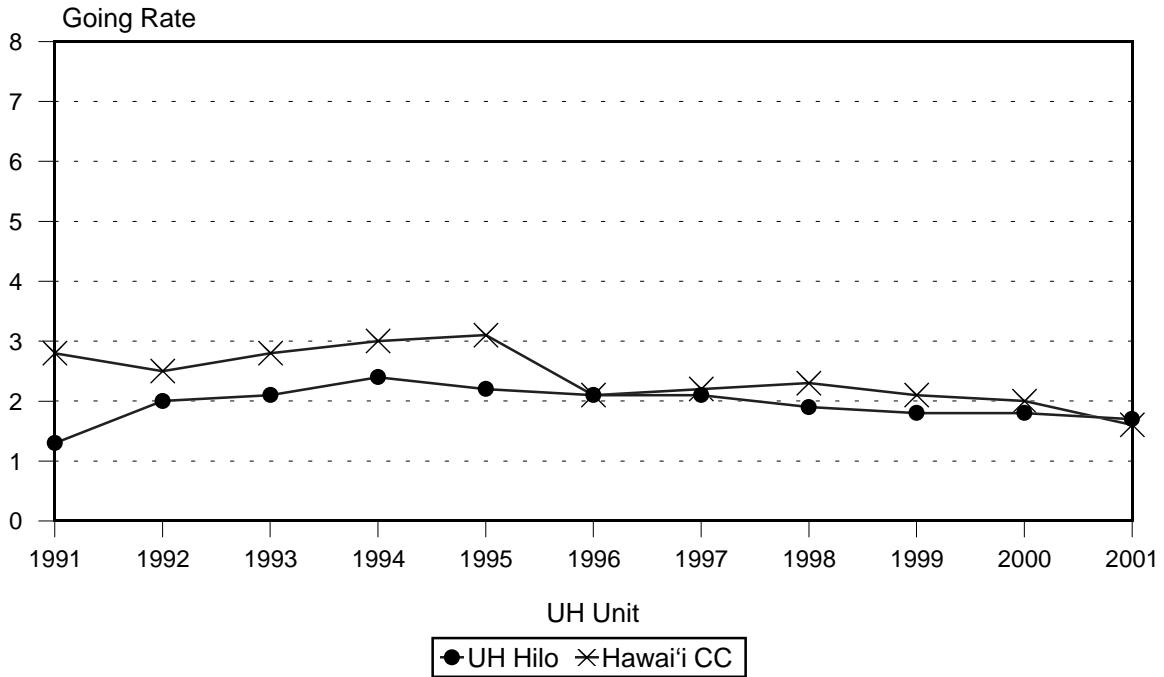
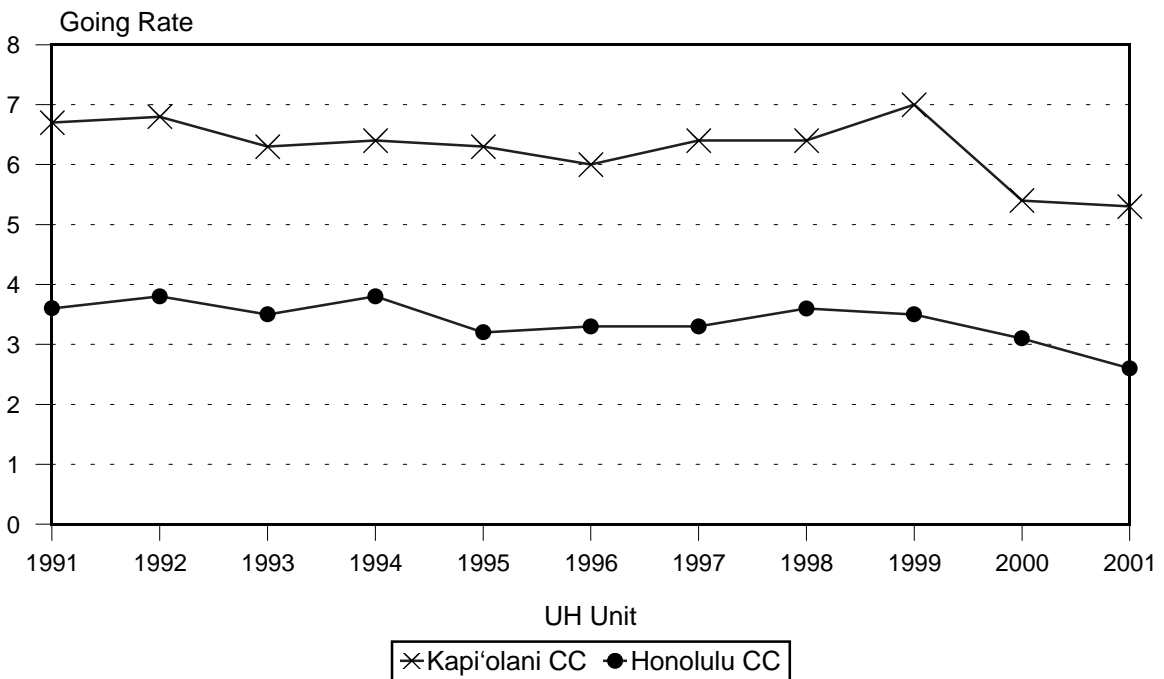


Figure 12
Total Going Rates - Historical
Kapi'olani CC and Honolulu CC



Going Rates Into the University of Hawai'i

Figure 13
Total Going Rates - Historical
Kaua'i CC and Maui CC

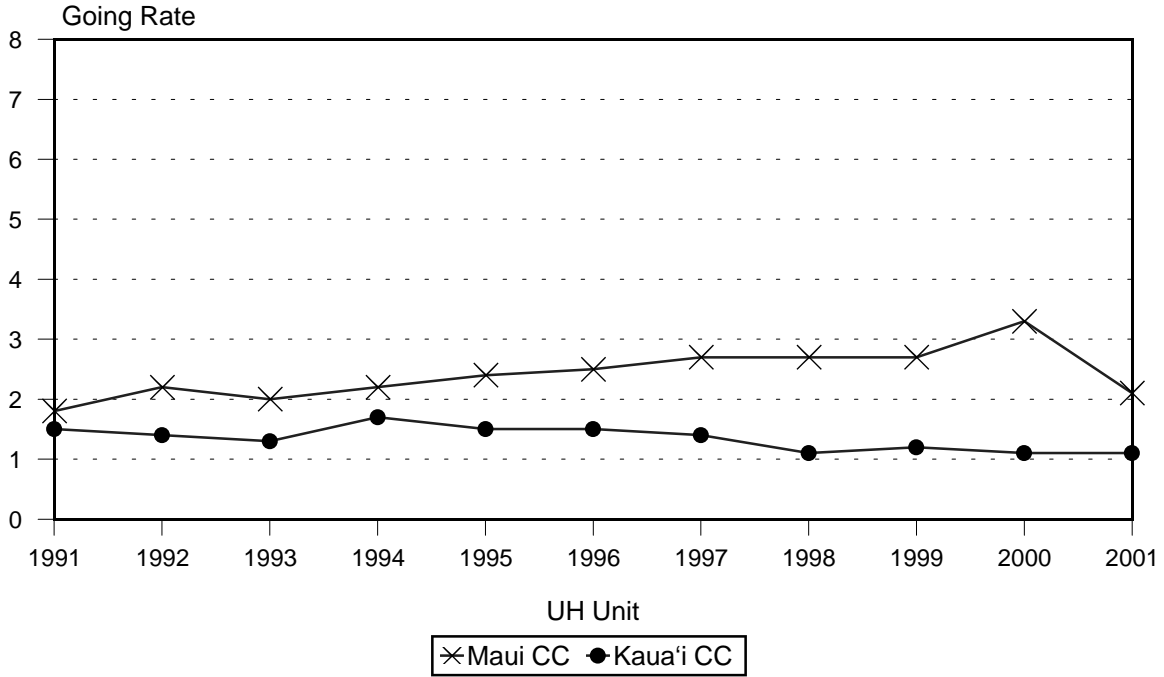


Figure 14
Total Going Rates - Historical
Leeward CC and Windward CC

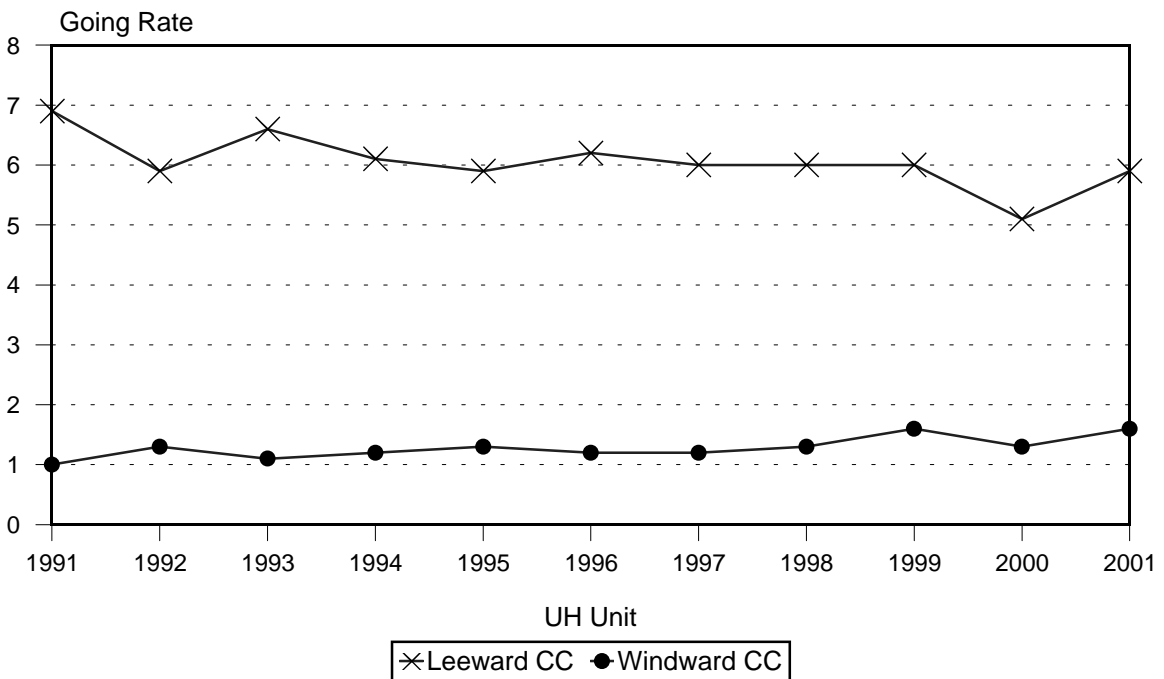


TABLE 1
DISTRIBUTION OF FIRST-TIME STUDENTS BY GEOGRAPHIC LOCATION OF HIGH SCHOOL
UNIVERSITY OF HAWAII, BY CAMPUS
FALL 2001

GEOGRAPHIC LOCATION OF HIGH SCHOOL	TOTAL		UH MANOA 1/		UH HILO 1/		UH COMMUNITY COLLEGES 2/																
	No.	V%	No.	V%	No.	V%	Subtotal No. V%	Hawai'i No. V%	Honolulu No. V%	Kapi'olani No. V%	Kaua'i No. V%	Leeward No. V%	Maui No. V%	Windward No. V%									
TOTAL	7,594	100.0	1,650	100.0	415	100.0	5,529	100.0	562	100.0	925	100.0	1,285	100.0	253	100.0	1,252	100.0	861	100.0	391	100.0	
HAWAII STATE	5,574	73.4	1,290	78.2	236	56.9	4,048	73.2	404	71.9	665	71.9	939	73.1	201	79.4	1,006	80.4	536	62.3	297	76.0	
Public	4,664	61.4	868	52.6	204	49.2	3,592	65.0	375	66.7	576	62.3	790	61.5	187	73.9	922	73.6	491	57.0	251	64.2	
O'ahu, Regular	3,121	41.1	690	41.8	23	5.5	2,408	43.6	25	4.4	520	56.2	681	53.0	6	2.4	899	71.8	35	4.1	242	61.9	
Honolulu	1,045	13.8	284	17.2	5	1.2	756	13.7	5	0.9	216	23.4	467	36.3	3	1.2	44	3.5	10	1.2	11	2.8	
Leeward	1,573	20.7	319	19.3	16	3.9	1,238	22.4	13	2.3	231	25.0	143	11.1	1	0.4	827	66.1	17	2.0	6	1.5	
Windward	503	6.6	87	5.3	2	0.5	414	7.5	7	1.2	73	7.9	71	5.5	2	0.8	28	2.2	8	0.9	225	57.5	
O'ahu, Special	6	0.1					6	0.1			2	0.2	4	0.3									
Hawai'i	647	8.5	75	4.5	150	36.1	422	7.6	336	59.8	14	1.5	44	3.4	3	1.2	9	0.7	13	1.5	3	0.8	
Kaua'i	286	3.8	30	1.8	11	2.7	245	4.4	4	0.7	18	1.9	36	2.8	177	70.0	3	0.2	4	0.5	3	0.8	
Maui County	604	8.0	73	4.4	20	4.8	511	9.2	10	1.8	22	2.4	25	1.9	1	0.4	11	0.9	439	51.0	3	0.8	
Lanai	20	0.3	5	0.3	2	0.5	13	0.2	3	0.5	1	0.1	1	0.1			2	0.2	6	0.7			
Maui	527	6.9	65	3.9	14	3.4	448	8.1	6	1.1	13	1.4	20	1.6	1	0.4	8	0.6	397	46.1	3	0.8	
Moloka'i	57	0.8	3	0.2	4	1.0	50	0.9	1	0.2	8	0.9	4	0.3			1	0.1	36	4.2			
Private	910	12.0	422	25.6	32	7.7	456	8.2	29	5.2	89	9.6	149	11.6	14	5.5	84	6.7	45	5.2	46	11.8	
O'ahu	839	11.0	409	24.8	20	4.8	410	7.4	14	2.5	87	9.4	145	11.3	7	2.8	84	6.7	27	3.1	46	11.8	
Hawai'i	36	0.5	8	0.5	9	2.2	19	0.3	15	2.7	1	0.1	3	0.2									
Kaua'i	9	0.1	1	0.1	1	0.2	7	0.1							7	2.8							
Maui	26	0.3	4	0.2	2	0.5	20	0.4			1	0.1	1	0.1					18	2.1			
OTHER THAN HAWAII	1,517	20.0	340	20.6	177	42.7	1,000	18.1	95	16.9	195	21.1	252	19.6	27	10.7	132	10.5	248	28.8	51	13.0	
U.S. Mainland	1,062	14.0	286	17.3	146	35.2	630	11.4	63	11.2	110	11.9	123	9.6	24	9.5	91	7.3	177	20.6	42	10.7	
U.S. Possessions	60	0.8	20	1.2			40	0.7			21	2.3	16	1.2			1	0.1			2	0.5	
Foreign Countries	395	5.2	34	2.1	31	7.5	330	6.0	32	5.7	64	6.9	113	8.8	3	1.2	40	3.2	71	8.2	7	1.8	
OTHER SPECIAL	483	6.4	16	1.0	2	0.5	465	8.4	63	11.2	65	7.0	87	6.8	25	9.9	109	8.7	74	8.6	42	10.7	
GED 3/	323	4.3	3	0.2	2	0.5	318	5.8	38	6.8	43	4.6	45	3.5	20	7.9	80	6.4	59	6.9	33	8.4	
Hawai'i State (Grad Div)	12	0.2	12	0.7																			
Home Schooler	2	<0.1	1	0.1			1	<0.1			1	0.1											
Not High School Grad	145	1.9					145	2.6	25	4.4	20	2.2	42	3.3	5	2.0	29	2.3	15	1.7	9	2.3	
Youth Challenge Program	1	<0.1					1	<0.1			1	0.1											
NO DATA	20	0.3	4	0.2			16	0.3					7	0.5			5	0.4	3	0.3	1	0.3	

1/ Entering freshmen only.

2/ Includes all regular first-time students; excludes specials (early admits and concurrents).

3/ Students who earned high school diplomas through completion of the General Education Development (GED) examination.

SOURCES: Report 1428, "High School Background of Entering Freshmen," for UH Manoa and UH Hilo;
 Report 2510, "High School Backgrounds of Entering Students," for the UH Community Colleges.

TABLE 1A
DISTRIBUTION OF FIRST-TIME STUDENTS BY GEOGRAPHIC LOCATION OF HIGH SCHOOL
UNIVERSITY OF HAWAII, HISTORICAL

GEOGRAPHIC LOCATION OF HIGH SCHOOL	FALL 1991	FALL 1992	FALL 1993	FALL 1994	FALL 1995	FALL 1996	FALL 1997	FALL 1998	FALL 1999	FALL 2000	FALL 2001
TOTAL	8,025	8,537	8,426	8,498	8,267	7,496	7,607	7,869	7,888	7,085	7,594
HAWAII STATE	5,994	6,319	6,157	6,533	6,353	5,753	5,868	6,040	6,136	5,425	5,574
Public	4,958	5,318	5,148	5,457	5,350	4,793	4,875	5,050	5,141	4,460	4,664
O'ahu, Regular	3,511	3,655	3,507	3,564	3,526	3,169	3,237	3,365	3,450	2,911	3,121
Honolulu	1,298	1,357	1,166	1,271	1,306	1,153	1,112	1,147	1,196	1,005	1,045
Leeward	1,761	1,790	1,846	1,773	1,738	1,584	1,634	1,722	1,714	1,475	1,573
Windward	452	508	495	520	482	432	491	496	540	431	503
O'ahu, Special	4	2	5	6	5	3	2	4	4	3	6
Hawaii	528	645	683	819	830	642	685	700	677	692	647
Kauai	328	337	320	393	310	313	276	275	301	283	286
Maui County	587	679	633	675	679	666	675	706	709	571	604
Lanai	25	19	30	38	27	35	24	28	29	20	20
Maui	515	599	551	570	581	567	604	621	618	504	527
Moloka'i	47	61	52	67	71	64	47	57	62	47	57
Private	1,036	1,001	1,009	1,076	1,003	960	993	990	995	965	910
O'ahu	932	907	911	963	889	846	885	883	909	875	839
Hawaii	38	32	43	48	42	46	39	48	31	42	36
Kauai	1		2	4	7	2	1	3	3	5	9
Maui	65	62	53	61	65	66	68	56	52	43	26
OTHER THAN HAWAII	1,280	1,467	1,462	1,282	1,249	1,081	1,037	1,088	1,199	1,232	1,517
U.S. Mainland	812	1,012	971	831	792	744	664	665	785	808	1,062
U.S. Possessions	20	20	45	40	50	46	28	48	56	41	60
Foreign Countries	448	435	446	411	407	291	345	375	358	383	395
OTHER SPECIAL	377	468	487	526	485	450	468	459	456	368	483
GED	243	316	294	302	303	278	286	328	322	239	323
Defunct High School	5	4	1					1		1	
Hawaii State (Grad Div)				1						1	12
Home Schooler										2	2
Not High School Grad	129	148	192	223	182	172	182	130	134	120	145
Youth Challenge Program										5	1
NO DATA	374	283	320	157	180	212	234	282	97	60	20

TABLE 2
 FIRST-TIME STUDENTS FROM HAWAI'I HIGH SCHOOLS
 BY YEAR OF HIGH SCHOOL GRADUATION
 UNIVERSITY OF HAWAI'I, BY CAMPUS
 FALL 2001

UH CAMPUS ENTERED	TOTAL	YEAR OF HIGH SCHOOL GRADUATION													
		2001		2000		1999		1998		1997		Before 1997		No Data	
		No.	H%	No.	H%	No.	H%	No.	H%	No.	H%	No.	H%	No.	H%
TOTAL	5,574	4,102	73.6	458	8.2	158	2.8	95	1.7	70	1.3	690	12.4	1	<0.1
UH at Manoa 1/	1,290	1,262	97.8	24	1.9					1	0.1	2	0.2	1	0.1
UH at Hilo 1/	236	216	91.5	12	5.1	1	0.4	2	0.8	2	0.8	3	1.3		
Community Colleges 2/	4,048	2,624	64.8	422	10.4	157	3.9	93	2.3	67	1.7	685	16.9		
Hawai'i CC	404	204	50.5	45	11.1	19	4.7	9	2.2	14	3.5	113	28.0		
Honolulu CC	665	338	50.8	74	11.1	27	4.1	16	2.4	12	1.8	198	29.8		
Kapi'olani CC	939	686	73.1	101	10.8	30	3.2	19	2.0	16	1.7	87	9.3		
Kaua'i CC	201	145	72.1	16	8.0	7	3.5	2	1.0	2	1.0	29	14.4		
Leeward CC	1,006	767	76.2	94	9.3	36	3.6	23	2.3	7	0.7	79	7.9		
Maui CC	536	276	51.5	62	11.6	25	4.7	16	3.0	14	2.6	143	26.7		
Windard CC	297	208	70.0	30	10.1	13	4.4	8	2.7	2	0.7	36	12.1		

1/ Entering freshmen only.

2/ Includes all regular first-time students; excludes specials (early admits and concurrents).

SOURCES: Report 1428, "High School Backgrounds of Entering Freshmen," for UH Manoa and UH Hilo;
 Report 2510, "High School Backgrounds of Entering Students," for the UH Community Colleges.

TABLE 3
 JUNE 2001 HAWAII HIGH SCHOOL GRADUATES ENTERING THE UNIVERSITY OF HAWAII
 BY HIGH SCHOOL DISTRICT AND HIGH SCHOOL
 UNIVERSITY OF HAWAII, BY CAMPUS
 FALL 2001

DISTRICT AND SCHOOL	JUNE		TOTAL		UH at		UH at		UH COMMUNITY COLLEGES 3/															
	2001 HIGH SCHOOL GRADS 1/	UH SYSTEM		MANOA 2/	UH at	HILO 2/	SUBTOTAL	Hawai'i	Honolulu	Kapi'olani	Kaua'i	Leeward	Maui	Windward										
		No.	Going Rate												No.	Going Rate	No.	Going Rate	No.	Going Rate	No.	Going Rate	No.	Going Rate
TOTAL	12,945	4,102	31.7	1,262	9.7	216	1.7	2,624	20.3	204	1.6	338	2.6	686	5.3	145	1.1	767	5.9	276	2.1	208	1.6	
PUBLIC SCHOOLS	10,330	3,369	32.6	846	8.2	185	1.8	2,338	22.6	194	1.9	305	3.0	571	5.5	137	1.3	698	6.8	262	2.5	171	1.7	
O'ahu, Regular	6,591	2,334	35.4	672	10.2	22	0.3	1,640	24.9	3	<0.1	282	4.3	496	7.5			684	10.4	7	0.1	168	2.5	
Honolulu	1,827	769	42.1	278	15.2	5	0.3	486	26.6			116	6.3	351	19.2			14	0.8	1	0.1	4	0.2	
Anuenue	4	3	75.0	2	50.0			1	25.0			1	25.0											
Farrington	393	102	26.0	18	4.6	2	0.5	82	20.9			40	10.2	33	8.4			7	1.8			2	0.5	
Kaimuki	234	107	45.7	36	15.4			71	30.3			9	3.8	60	25.6			2	0.9					
Kaiser	271	102	37.6	54	19.9	1	0.4	47	17.3			2	0.7	45	16.6									
Kalani	237	134	56.5	52	21.9			82	34.6			6	2.5	76	32.1									
McKinley	386	162	42.0	55	14.2			107	27.7			37	9.6	68	17.6			1	0.3	1	0.3			
Roosevelt	302	159	52.6	61	20.2	2	0.7	96	31.8			21	7.0	69	22.8			4	1.3			2	0.7	
Leeward	3,672	1,214	33.1	308	8.4	15	0.4	891	24.3			134	3.6	101	2.8			652	17.8	3	0.1	1	<0.1	
Central	1,879	681	36.2	185	9.8	10	0.5	486	25.9			79	4.2	61	3.2			345	18.4	1	0.1			
Aiea	323	147	45.5	41	12.7	2	0.6	104	32.2			15	4.6	25	7.7			63	19.5	1	0.3			
Leilehua	357	87	24.4	10	2.8	4	1.1	73	20.4			15	4.2	1	0.3			57	16.0					
Mililani	456	183	40.1	50	11.0	3	0.7	130	28.5			13	2.9	5	1.1			112	24.6					
Moanalua	388	159	41.0	66	17.0			93	24.0			25	6.4	22	5.7			46	11.9					
Radford	258	68	26.4	12	4.7			56	21.7			10	3.9	6	2.3			40	15.5					
Waiialua	97	37	38.1	6	6.2	1	1.0	30	30.9			1	1.0	2	2.1			27	27.8					
Leeward	1,793	533	29.7	123	6.9	5	0.3	405	22.6			55	3.1	40	2.2			307	17.1	2	0.1	1	0.1	
Campbell	436	108	24.8	14	3.2	3	0.7	91	20.9			12	2.8	11	2.5			68	15.6					
Nanakuli	158	22	13.9	4	2.5			18	11.4			1	0.6	2	1.3			15	9.5					
Pearl City	423	204	48.2	63	14.9	1	0.2	140	33.1			11	2.6	14	3.3			114	27.0			1	0.2	
Waianae	348	71	20.4	17	4.9	1	0.3	53	15.2			9	2.6	1	0.3			42	12.1	1	0.3			
Waipahu	428	128	29.9	25	5.8			103	24.1			22	5.1	12	2.8			68	15.9	1	0.2			
Windward	1,092	351	32.1	86	7.9	2	0.2	263	24.1	3	0.3	32	2.9	44	4.0			18	1.6	3	0.3	163	14.9	
Castle	379	156	41.2	38	10.0			118	31.1			15	4.0	22	5.8			2	0.5			79	20.8	
Kahuku	253	48	19.0	14	5.5	1	0.4	33	13.0	1	0.4	3	1.2	1	0.4			11	4.3			17	6.7	
Kailua	220	74	33.6	22	10.0	1	0.5	51	23.2	2	0.9	6	2.7	15	6.8			3	1.4	3	1.4	22	10.0	
Kalaheo	240	73	30.4	12	5.0			61	25.4			8	3.3	6	2.5			2	0.8			45	18.8	
O'ahu, Special	10	3	30.0					3	30.0					3	30.0									
Hawai'i Center for Deaf & Blind	7	3	42.9					3	42.9					3	42.9									
Olomana	3																							
Neighbor Islands	3,729	1,030	27.6	174	4.7	163	4.4	693	18.6	190	5.1	23	0.6	72	1.9	137	3.7	14	0.4	254	6.8	3	0.1	
Hawai'i	1,661	440	26.5	73	4.4	134	8.1	233	14.0	183	11.0	6	0.4	27	1.6	3	0.2	7	0.4	6	0.4	1	0.1	
Hilo	348	94	27.0	13	3.7	29	8.3	52	14.9	47	13.5	2	0.6					1	0.3	2	0.6			
Honoka'a	121	31	25.6	3	2.5	12	9.9	16	13.2	15	12.4	1	0.8											
Kanu O Ka Aina Charter 4/	4	1	25.0			1	25.0																	
Ka'u	71	19	26.8	1	1.4	6	8.5	12	16.9	10	14.1									2	2.8			
Kealahou 4/	262	45	17.2	8	3.1	13	5.0	24	9.2	18	6.9			3	1.1			2	0.8			1	0.4	
Kohala	72	16	22.2	2	2.8	7	9.7	7	9.7	5	6.9									2	2.8			
Kona Waena	161	44	27.3	14	8.7	3	1.9	27	16.8	15	9.3	1	0.6	8	5.0			3	1.9					
Laupahoehoe	19	5	26.3	2	10.5	2	10.5	3	15.8	1	5.3			2	10.5									
Pahoa	123	41	33.3	6	4.9	12	9.8	23	18.7	15	12.2	1	0.8	6	4.9	1	0.8							

TABLE 3 (cont.)

DISTRICT AND SCHOOL	JUNE 2001 HIGH SCHOOL GRADS 1/	TOTAL		UH at		UH at		UH COMMUNITY COLLEGES 3/															
		UH SYSTEM Going No. Rate		MANOA 2/ Going No. Rate		HILO 2/ Going No. Rate		SUBTOTAL Going No. Rate		Hawai'i Going No. Rate		Honolulu Going No. Rate		Kapi'olani Going No. Rate		Kaua'i Going No. Rate		Leeward Going No. Rate		Maui Going No. Rate		Windward Going No. Rate	
		No.	Rate	No.	Rate	No.	Rate	No.	Rate	No.	Rate	No.	Rate	No.	Rate	No.	Rate	No.	Rate	No.	Rate	No.	Rate
Waiakea	462	144	31.2	26	5.6	49	10.6	69	14.9	57	12.3	1	0.2	8	1.7	2	0.4	1	0.2				
Waters of Life 4/	3																						
W. HI. Expl Academy 4/	15																						
Maui County	1,355	375	27.7	71	5.2	18	1.3	286	21.1	6	0.4	11	0.8	17	1.3			6	0.4	245	18.1	1	0.1
Baldwin	352	105	29.8	18	5.1	6	1.7	81	23.0	1	0.3			2	0.6			2	0.6	75	21.3	1	0.3
Hana	26	3	11.5					3	11.5					2	7.7					1	3.8		
King Kekaulike	272	73	26.8	18	6.6	1	0.4	54	19.9											54	19.9		
Lahaina Luna	176	29	16.5	5	2.8	1	0.6	23	13.1	1	0.6			2	1.1					20	11.4		
Lana'i	52	16	30.8	5	9.6	2	3.8	9	17.3	2	3.8	1	1.9					2	3.8	4	7.7		
Maui	372	124	33.3	22	5.9	4	1.1	98	26.3	1	0.3	5	1.3	8	2.2			2	0.5	82	22.0		
Moloka'i	105	25	23.8	3	2.9	4	3.8	18	17.1	1	1.0	5	4.8	3	2.9					9	8.6		
Kaua'i	713	215	30.2	30	4.2	11	1.5	174	24.4	1	0.1	6	0.8	28	3.9	134	18.8	1	0.1	3	0.4	1	0.1
Kapa'a	238	58	24.4	9	3.8	3	1.3	46	19.3	1	0.4	1	0.4	15	6.3	28	11.8			1	0.4		
Kaua'i	285	100	35.1	15	5.3	4	1.4	81	28.4			4	1.4	3	1.1	72	25.3			1	0.4	1	0.4
Ni'ihau	3																						
Waimea	187	57	30.5	6	3.2	4	2.1	47	25.1			1	0.5	10	5.3	34	18.2	1	0.5	1	0.5		
Unknown / Miscoded	NA	2	NA					2	NA	1	NA									1	NA		
PRIVATE SCHOOLS	2,615	733	28.0	416	15.9	31	1.2	286	10.9	10	0.4	33	1.3	115	4.4	8	0.3	69	2.6	14	0.5	37	1.4
O'ahu	2,286	691	30.2	403	17.6	19	0.8	269	11.8	3	0.1	33	1.4	113	4.9	4	0.2	69	3.0	10	0.4	37	1.6
Academy of the Pacific	32	9	28.1					9	28.1					5	15.6			2	6.3			2	6.3
ASSETS School	10	4	40.0					4	40.0					1	10.0			3	30.0				
Damien	97	42	43.3	19	19.6	1	1.0	22	22.7	1	1.0	6	6.2	9	9.3			3	3.1			3	3.1
Hale O Ulu School	15																						
Hanalani	29	11	37.9	7	24.1			4	13.8					1	3.4			3	10.3				
Hawai'i Baptist Academy	101	44	43.6	38	37.6			6	5.9					4	4.0			1	1.0			1	1.0
Hawaiian Mission Academy	45	16	35.6	2	4.4			14	31.1			5	11.1	6	13.3			1	2.2	1	2.2	1	2.2
Ho'ala School 5/	4	1	25.0					1	25.0									1	25.0				
Honolulu Waldorf School	9	2	22.2					2	22.2					2	22.2								
Iolani	220	39	17.7	34	15.5	3	1.4	2	0.9					1	0.5			1	0.5				
Kailua Christian Academy	5	3	60.0					3	60.0					1	20.0							2	40.0
Kamehameha	430	157	36.5	88	20.5	13	3.0	56	13.0	2	0.5	4	0.9	16	3.7	1	0.2	18	4.2	7	1.6	8	1.9
Koolau Baptist	7	2	28.6					2	28.6			1	14.3									1	14.3
La Pietra (HI School for Girls) ..	43	5	11.6	4	9.3			1	2.3					1	2.3								
Lanakila Baptist	18	4	22.2	2	11.1			2	11.1			1	5.6					1	5.6				
Lutheran High Sch Hawai'i	35	26	74.3	16	45.7			10	28.6			1	2.9	4	11.4			2	5.7			3	8.6
Maile Bible	4	1	25.0					1	25.0					1	25.0								
Maryknoll	130	54	41.5	32	24.6	1	0.8	21	16.2			2	1.5	15	11.5			4	3.1				
Mid-Pacific Institute	184	49	26.6	32	17.4			17	9.2			1	0.5	10	5.4			6	3.3				
Punahou	415	46	11.1	37	8.9			9	2.2			1	0.2	6	1.4			2	0.5				
Redemption Academy	6	3	50.0					3	50.0									1	16.7			2	33.3
Sacred Hearts Academy	118	43	36.4	25	21.2	1	0.8	17	14.4			1	0.8	7	5.9			7	5.9			2	1.7
Saint Andrew's Priory	31	10	32.3	5	16.1			5	16.1			1	3.2					1	3.2	2	6.5	1	3.2
Saint Francis	80	35	43.8	21	26.3			14	17.5			2	2.5	3	3.8	3	3.8	4	5.0			2	2.5
Saint Louis	142	58	40.8	26	18.3			32	22.5			5	3.5	15	10.6			6	4.2			6	4.2
University	48	19	39.6	15	31.3			4	8.3			1	2.1	2	4.2			1	2.1				
Varsity	28	8	28.6					8	28.6			1	3.6	3	10.7			1	3.6			3	10.7

TABLE 3 (cont.)

DISTRICT AND SCHOOL	JUNE 2001 HIGH SCHOOL GRADS 1/	TOTAL		UH at		UH at		UH COMMUNITY COLLEGES 3/																
		UH SYSTEM Going No.	Rate	MANOA 2/ Going No.	Rate	HILO 2/ Going No.	Rate	SUBTOTAL Going No.	Rate	Hawai'i Going No.	Rate	Honolulu Going No.	Rate	Kapi'olani Going No.	Rate	Kaua'i Going No.	Rate	Leeward Going No.	Rate	Maui Going No.	Rate	Windward Going No.	Rate	
Hawai'i	168	25	14.9	8	4.8	9	5.4	8	4.8	7	4.2			1	0.6									
Christian Liberty	9	2	22.2	1	11.1	1	11.1																	
Hawai'i Prep Academy	87	7	8.0	7	8.0																			
Makua Lani Christian	10																							
Parker	18	2	11.1			1	5.6	1	5.6	1	5.6													
Saint Joseph	44	14	31.8			7	15.9	7	15.9	6	13.6			1	2.3									
Maui County	138	11	8.0	4	2.9	2	1.4	5	3.6					1	0.7						4	2.9		
Ka'ahumanu Hou Christian	18	2	11.1					2	11.1												2	11.1		
Molokai Christian Acad	3																							
Saint Anthony	63	5	7.9	2	3.2			3	4.8					1	1.6						2	3.2		
Seabury Hall	54	4	7.4	2	3.7	2	3.7																	
Kaua'i	23	5	21.7	1	4.3			4	17.4							4	17.4							
Island School 5/	6	1	16.7					1	16.7							1	16.7							
Kahili Adventist School	4	3	75.0					3	75.0							3	75.0							
Kula High School 5/	13	1	7.7	1	7.7																			
Unknown / Miscoded	NA	1	NA			1	NA																	

1/ Excludes home schoolers and students who earned high school diplomas through the General Education Development (GED) examination.

2/ Entering freshmen only.

3/ Includes all regular first-time students; excludes specials (early admits and concurrents).

4/ First graduating class June 2001.

5/ First graduating class June 2000.

Note: The "going rate" is the percentage of high school graduates from the State of Hawai'i entering the University of Hawai'i campuses in the fall semester immediately following graduation from high school.

SOURCES: UH Report 1428B, "Details of Hawai'i High School Backgrounds," for UH Manoa and UH Hilo; report 2510B, "Details of Hawai'i High School Backgrounds," for the UH Community Colleges.

High school graduates data obtained from the State of Hawai'i Dept. of Education (public) and from the administrative offices of private high schools.

TABLE 4
 "GOING RATES" OF HAWAII HIGH SCHOOL GRADUATES
 INTO THE UNIVERSITY OF HAWAII SYSTEM 1/
 BY UH CAMPUS AND BY PUBLIC AND PRIVATE HIGH SCHOOLS
 FALL 1991 TO FALL 2001

CAMPUS AND FALL SEMESTER	TOTAL 2/		PUBLIC SCHOOLS		PRIVATE SCHOOLS	
	No.	Going Rate	No.	Going Rate	No.	Going Rate
TOTAL UH						
1991	4,469	37.6	3,623	38.2	846	35.3
1992	4,580	38.1	3,761	39.1	819	34.1
1993	4,494	38.5	3,634	39.0	860	36.5
1994	4,855	39.3	3,949	40.0	906	36.5
1995	4,829	38.8	3,982	39.9	847	34.6
1996	4,393	35.2	3,579	35.8	814	32.7
1997	4,510	36.6	3,661	37.4	849	33.6
1998	4,617	35.7	3,787	36.5	830	32.6
1999	4,692	36.0	3,844	36.9	848	32.7
2000	4,351	32.5	3,506	32.9	845	31.2
2001	4,102	31.7	3,369	32.6	733	28.0
UH at MANOA 3/						
1991	1,425	12.0	978	10.3	447	18.7
1992	1,470	12.2	1,059	11.0	411	17.1
1993	1,484	12.7	1,019	10.9	465	19.7
1994	1,546	12.5	1,077	10.9	469	18.9
1995	1,616	13.0	1,132	11.3	484	19.8
1996	1,279	10.2	874	8.7	405	16.3
1997	1,379	11.2	957	9.8	422	16.7
1998	1,341	10.4	924	8.9	417	16.4
1999	1,316	10.1	879	8.4	437	16.9
2000	1,278	9.6	826	7.7	452	16.7
2001	1,262	9.7	846	8.2	416	15.9
UH at HILO 3/						
1991	159	1.3	117	1.2	42	1.8
1992	241	2.0	196	2.0	45	1.9
1993	240	2.1	186	2.0	54	2.3
1994	293	2.4	227	2.3	66	2.7
1995	271	2.2	227	2.3	44	1.8
1996	263	2.1	209	2.1	54	2.2
1997	257	2.1	213	2.2	44	1.7
1998	239	1.9	199	1.9	40	1.6
1999	237	1.8	198	1.9	39	1.5
2000	235	1.8	202	1.9	33	1.2
2001	216	1.7	185	1.8	31	1.2
COMMUNITY COLLEGES 4/						
1991	2,885	24.3	2,528	26.7	357	14.9
1992	2,869	23.9	2,506	26.1	363	15.1
1993	2,770	23.7	2,429	26.1	341	14.5
1994	3,016	24.4	2,645	26.8	371	14.9
1995	2,942	23.7	2,623	26.3	319	13.0
1996	2,851	22.8	2,496	25.0	355	14.3
1997	2,874	23.3	2,491	25.5	383	15.2
1998	3,037	23.5	2,664	25.7	373	14.7
1999	3,139	24.1	2,767	26.5	372	14.4
2000	2,838	21.2	2,478	23.2	360	13.3
2001	2,624	20.3	2,338	22.6	286	10.9

TABLE 4 (cont.)

CAMPUS AND FALL SEMESTER	TOTAL 2/ No. Going Rate		PUBLIC SCHOOLS No. Going Rate		PRIVATE SCHOOLS No. Going Rate	
	Hawai'i CC					
1991	328	2.8	312	3.3	16	0.7
1992	295	2.5	282	2.8	13	0.5
1993	329	2.8	306	3.3	23	1.0
1994	369	3.0	352	3.6	17	0.7
1995	383	3.1	364	3.6	19	0.8
1996	262	2.1	253	2.5	9	0.4
1997	276	2.2	259	2.6	17	0.7
1998	303	2.3	285	2.7	18	0.7
1999	269	2.1	253	2.4	16	0.6
2000	261	2.0	247	2.3	14	0.5
2001	204	1.6	194	1.9	10	0.4
Honolulu CC						
1991	430	3.6	391	4.1	39	1.6
1992	460	3.8	426	4.4	34	1.4
1993	414	3.5	383	4.1	31	1.3
1994	471	3.8	440	4.5	31	1.2
1995	401	3.2	367	3.7	34	1.4
1996	416	3.3	375	3.8	41	1.6
1997	408	3.3	360	3.7	48	1.9
1998	466	3.6	428	4.1	38	1.5
1999	459	3.5	415	4.0	44	1.7
2000	418	3.1	377	3.5	41	1.5
2001	338	2.6	305	3.0	33	1.3
Kapi'olani CC						
1991	793	6.7	657	6.9	136	5.7
1992	823	6.8	652	6.8	171	7.1
1993	739	6.3	588	6.3	151	6.4
1994	795	6.4	631	6.4	164	6.6
1995	781	6.3	642	6.4	139	5.7
1996	752	6.0	605	6.1	147	5.9
1997	794	6.4	611	6.2	183	7.2
1998	828	6.4	661	6.4	167	6.6
1999	914	7.0	738	7.1	176	6.8
2000	725	5.4	581	5.4	144	5.3
2001	686	5.3	571	5.5	115	4.4
Kaua'i CC						
1991	173	1.5	172	1.8	1	<0.1
1992	164	1.4	163	1.7	1	<0.1
1993	152	1.3	142	1.5	10	0.4
1994	213	1.7	209	2.1	4	0.2
1995	190	1.5	189	1.9	1	<0.1
1996	181	1.5	178	1.8	3	0.1
1997	173	1.4	169	1.7	4	0.2
1998	144	1.1	135	1.3	9	0.4
1999	160	1.2	158	1.5	2	<0.1
2000	148	1.1	145	1.4	3	0.1
2001	145	1.1	137	1.3	8	0.3
Leeward CC						
1991	822	6.9	709	7.5	113	4.7
1992	704	5.9	620	6.4	84	3.5
1993	768	6.6	678	7.3	90	3.8
1994	751	6.1	653	6.6	98	3.9
1995	728	5.9	649	6.5	79	3.2

TABLE 4 (cont.)

CAMPUS AND FALL SEMESTER	TOTAL 2/ No. Going Rate		PUBLIC SCHOOLS No. Going Rate		PRIVATE SCHOOLS No. Going Rate	
	1996	777	6.2	685	6.9	92
1997	742	6.0	662	6.8	80	3.2
1998	776	6.0	687	6.6	89	3.5
1999	776	6.0	698	6.7	78	3.0
2000	679	5.1	604	5.7	75	2.8
2001	767	5.9	698	6.8	69	2.6
Maui CC						
1991	217	1.8	195	2.1	22	0.9
1992	266	2.2	244	2.5	22	0.9
1993	235	2.0	221	2.4	14	0.6
1994	266	2.2	249	2.5	17	0.7
1995	294	2.4	276	2.8	18	0.7
1996	307	2.5	278	2.8	29	1.2
1997	334	2.7	309	3.2	25	1.0
1998	346	2.7	325	3.1	21	0.8
1999	350	2.7	329	3.2	21	0.8
2000	435	3.3	382	3.6	53	2.0
2001	276	2.1	262	2.5	14	0.5
Windward CC						
1991	122	1.0	92	1.0	30	1.3
1992	157	1.3	119	1.2	38	1.6
1993	133	1.1	111	1.2	22	0.9
1994	151	1.2	111	1.1	40	1.6
1995	165	1.3	136	1.4	29	1.2
1996	156	1.2	122	1.2	34	1.4
1997	147	1.2	121	1.2	26	1.0
1998	174	1.3	143	1.4	31	1.2
1999	211	1.6	176	1.7	35	1.4
2000	172	1.3	142	1.3	30	1.1
2001	208	1.6	171	1.7	37	1.4
HAWAII STATE HS GRADUATES						
	No.	H%	No.	H%	No.	H%
1991	11,877	100.0	9,482	79.8	2,395	20.2
1992	12,015	100.0	9,615	80.0	2,400	20.0
1993	11,675	100.0	9,320	79.8	2,355	20.2
1994	12,353	100.0	9,870	79.9	2,483	20.1
1995	12,434	100.0	9,984	80.3	2,450	19.7
1996	12,482	100.0	9,995	80.1	2,487	19.9
1997 5/	12,312	100.0	9,784	79.5	2,528	20.5
1998	12,915	100.0	10,369	80.3	2,546	19.7
1999	13,017	100.0	10,425	80.1	2,592	19.9
2000	13,379	100.0	10,671	79.8	2,708	20.2
2001	12,945	100.0	10,330	79.8	2,615	20.2

- 1/ The "going rate" is the percentage of high school graduates from the State of Hawai'i entering the University of Hawai'i in the fall semester immediately following graduation from high school.
- 2/ Excludes home schoolers and students who received high school diplomas via the GED examination .
- 3/ First-time freshmen only.
- 4/ Includes all regular first-time students; excludes specials (early admits and concurrents).
- 5/ Private high school graduate count revised.

SOURCES: Report 1428, "High School Backgrounds of Entering Freshmen," for UH Manoa and UH Hilo;
Report 2510, "High School Backgrounds of Entering Students," for the UH Community Colleges.

TABLE 5
 THE "GOING RATE" OF O'AHU HIGH SCHOOL GRADUATES
 INTO THE UNIVERSITY OF HAWAI'I, BY HIGH SCHOOL DISTRICT 1/
 UNIVERSITY OF HAWAI'I
 FALL 1991 TO FALL 2001

CAMPUS & FALL SEMESTER	TOTAL O'AHU		PUBLIC HIGH SCHOOL DISTRICT										PRIVATE HIGH SCHOOLS					
			Subtotal		Honolulu		Central		Leeward		Windward				Special			
			No.	Rate	No.	Rate	No.	Rate	No.	Rate	No.	Rate			No.	Rate	No.	Rate
TOTAL UH																		
1991	3,419	38.7	2,627	39.4	955	46.2	780	39.7	592	38.3	300	27.8					792	36.7
1992	3,438	39.0	2,662	40.0	986	48.9	812	40.8	554	36.0	309	28.5	1	4.5			776	35.9
1993	3,363	39.7	2,565	40.1	854	47.7	805	41.4	578	37.6	327	29.7	1	5.6			798	38.4
1994	3,492	39.5	2,656	39.9	956	49.1	763	39.4	597	35.9	340	31.2					836	38.5
1995	3,456	39.2	2,678	40.2	1,001	50.7	807	39.9	549	34.1	319	30.3	2	40.0			778	36.2
1996	3,183	36.2	2,437	36.9	892	46.2	716	36.1	538	33.8	289	26.6	2	25.0			746	34.2
1997	3,275	37.9	2,503	38.9	863	45.5	755	38.8	543	34.8	340	33.7	2	12.5			772	34.8
1998	3,359	37.1	2,603	38.2	887	47.4	810	39.1	570	32.4	334	30.1	2	100.0			756	33.8
1999	3,458	37.9	2,660	39.0	941	47.1	766	39.2	579	33.0	374	33.9					798	34.8
2000	3,080	33.2	2,307	33.5	790	38.1	655	33.5	537	30.2	323	30.3	2	28.6			773	32.4
2001	3,028	34.1	2,337	35.4	769	42.1	681	36.2	533	29.7	351	32.1	3	30.0			691	30.2
UH MANOA 2/																		
1991	1,217	13.8	782	11.7	311	15.1	240	12.2	129	8.3	102	9.4					435	20.2
1992	1,250	14.2	844	12.7	353	17.5	251	12.6	146	9.5	94	8.7					406	18.8
1993	1,267	15.0	818	12.8	308	17.2	272	14.0	140	9.1	98	8.9					449	21.6
1994	1,298	14.7	849	12.7	314	16.1	286	14.8	146	8.8	103	9.4					449	20.7
1995	1,379	15.7	915	13.7	387	19.6	287	14.2	145	9.0	96	9.1					464	21.6
1996	1,088	12.4	698	10.6	278	14.4	223	11.2	123	7.7	74	6.8					390	17.9
1997	1,175	13.6	768	11.9	290	15.3	261	13.4	140	9.0	77	7.6					407	18.3
1998	1,153	12.7	752	11.0	292	15.6	246	11.9	139	7.9	75	6.8					401	17.9
1999	1,136	12.5	710	10.4	288	14.4	237	12.1	117	6.7	68	6.2					426	18.6
2000	1,099	11.9	666	9.7	249	12.0	216	11.0	124	7.0	77	7.2					433	18.1
2001	1,075	12.1	672	10.2	278	15.2	185	9.8	123	6.9	86	7.9					403	17.6
UH HILO 2/																		
1991	57	0.6	26	0.4	10	0.5	6	0.3	9	0.6	1	0.1					31	1.4
1992	74	0.8	39	0.6	6	0.3	17	0.9	12	0.8	4	0.4					35	1.6
1993	82	1.0	41	0.6	8	0.4	14	0.7	9	0.6	10	0.9					41	2.0
1994	82	0.9	34	0.5	6	0.3	7	0.4	12	0.7	9	0.8					48	2.2
1995	63	0.7	30	0.5	6	0.3	13	0.6	10	0.6	1	0.1					33	1.5
1996	56	0.6	24	0.4	7	0.4	10	0.5	3	0.2	4	0.4					32	1.5
1997	55	0.6	29	0.5	6	0.3	11	0.6	8	0.5	4	0.4					26	1.2
1998	45	0.5	26	0.4	6	0.3	13	0.6	2	0.1	5	0.5					19	0.9
1999	56	0.6	31	0.5	8	0.4	14	0.7	2	0.1	7	0.6					25	1.1
2000	40	0.4	23	0.3	8	0.4	9	0.5	2	0.1	4	0.4					17	0.7
2001	41	0.5	22	0.3	5	0.3	10	0.5	5	0.3	2	0.2					19	0.8

TABLE 5 (cont.)

CAMPUS & FALL SEMESTER	TOTAL O'AHU		PUBLIC HIGH SCHOOL DISTRICT										PRIVATE HIGH SCHOOLS			
			Subtotal		Honolulu		Central		Leeward		Windward				Special	
			Going	Rate	Going	Rate	Going	Rate	Going	Rate	Going	Rate			Going	Rate
No.	Rate	No.	Rate	No.	Rate	No.	Rate	No.	Rate	No.	Rate	No.	Rate	No.	Rate	
UH COMMUNITY COLLEGES 3/																
1991	2,145	24.3	1,819	27.3	634	30.7	534	27.2	454	29.4	197	18.2			326	15.1
1992	2,114	24.0	1,779	26.7	627	31.1	544	27.3	396	25.7	211	19.4	1	4.5	335	15.5
1993	2,014	23.8	1,706	26.7	538	30.1	519	26.7	429	27.9	219	19.9	1	5.6	308	14.8
1994	2,112	23.9	1,773	26.6	636	32.6	470	24.3	439	26.4	228	20.9			339	15.6
1995	2,014	22.9	1,733	26.0	608	30.8	507	25.1	394	24.5	222	21.1	2	40.0	281	13.1
1996	2,039	23.2	1,715	26.0	607	31.5	483	24.3	412	25.9	211	19.4	2	25.0	324	14.8
1997	2,045	23.6	1,706	26.5	567	29.9	483	24.8	395	25.3	259	25.7	2	12.5	339	15.3
1998	2,161	23.9	1,825	26.8	589	31.5	551	26.6	429	24.4	254	22.9	2	100.0	336	15.0
1999	2,266	24.9	1,919	28.2	645	32.3	515	26.3	460	26.2	299	27.1			347	15.1
2000	1,941	20.9	1,618	23.5	533	25.7	430	22.0	411	23.1	242	22.7	2	28.6	323	13.5
2001	1,912	21.5	1,643	24.9	486	26.6	486	25.9	405	22.6	263	24.1	3	30.0	269	11.8
HS GRADS	No.	H%	No.	H%	No.	H%	No.	H%	No.	H%	No.	H%	No.	H%	No.	H%
1991	8,827	100.0	6,669	75.6	2,065	23.4	1,965	22.3	1,546	17.5	1,080	12.2	13	0.1	2,158	24.4
1992	8,814	100.0	6,654	75.5	2,018	22.9	1,991	22.6	1,538	17.4	1,085	12.3	22	0.2	2,160	24.5
1993	8,473	100.0	6,393	75.5	1,790	21.1	1,944	22.9	1,539	18.2	1,102	13.0	18	0.2	2,080	24.5
1994	8,832	100.0	6,661	75.4	1,949	22.1	1,938	21.9	1,662	18.8	1,090	12.3	22	0.2	2,171	24.6
1995	8,810	100.0	6,663	75.6	1,976	22.4	2,021	22.9	1,608	18.3	1,053	12.0	5	0.1	2,147	24.4
1996	8,781	100.0	6,597	75.1	1,929	22.0	1,984	22.6	1,591	18.1	1,085	12.4	8	0.1	2,184	24.9
1997	8,648	100.0	6,429	74.3	1,898	21.9	1,946	22.5	1,561	18.1	1,008	11.7	16	0.2	2,219	25.7
1998	9,049	100.0	6,814	75.3	1,872	20.7	2,071	22.9	1,761	19.5	1,108	12.2	2	<0.1	2,235	24.7
1999	9,113	100.0	6,817	74.8	1,997	21.9	1,955	21.5	1,754	19.2	1,103	12.1	8	0.1	2,296	25.2
2000	9,267	100.0	6,879	74.2	2,072	22.4	1,956	21.1	1,779	19.2	1,065	11.5	7	0.1	2,388	25.8
2001	8,887	100.0	6,601	74.3	1,827	20.6	1,879	21.1	1,793	20.2	1,092	12.3	10	0.1	2,286	25.7

1/ The "going rate" in this table is the percentage of O'ahu high school graduates entering the University of Hawai'i system in the fall semester immediately following graduation from high school.

2/ Entering freshmen only.

3/ Includes all regular first-time students; excludes specials (early admits and concurrents).

SOURCES: UH Report 1428, "High School Backgrounds of Entering Freshmen," for UH Manoa and UH Hilo;
UH Report 2510, "High School Backgrounds of Entering Students," for the UH Community Colleges.

TABLE 6
NUMBER AND GOING RATE OF HAWAII STATE HIGH SCHOOL GRADUATES
ENTERING THE UNIVERSITY OF HAWAII SYSTEM, BY DISTRICT AND SCHOOL
FALL 1997 TO FALL 2001

DISTRICT AND HIGH SCHOOL	Fall 1997		Fall 1998		Fall 1999		Fall 2000		Fall 2001	
	No.	Going Rate	No.	Going Rate	No.	Going Rate	No.	Going Rate	No.	Going Rate
TOTAL	4,510	36.6	4,617	35.7	4,692	36.0	4,351	32.5	4,102	31.7
PUBLIC SCHOOLS	3,661	37.4	3,787	36.5	3,844	36.9	3,506	32.9	3,369	32.6
O'ahu, Regular	2,501	39.0	2,601	38.2	2,660	39.1	2,305	33.5	2,334	35.4
Honolulu	863	45.5	887	47.4	941	47.1	790	38.1	769	42.1
Anuenue 1/					4	66.7			3	75.0
Farrington	136	30.4	120	30.7	162	38.8	129	25.9	102	26.0
Kaimuki	130	47.4	136	47.1	133	43.9	114	38.9	107	45.7
Kaiser	141	48.3	134	47.9	139	56.3	98	36.0	102	37.6
Kalani	112	56.3	146	60.8	169	64.5	149	53.6	134	56.5
McKinley	184	48.7	191	55.0	182	44.7	160	37.4	162	42.0
Roosevelt	160	51.9	160	49.2	152	42.9	140	46.7	159	52.6
Leeward	1,298	37.0	1,380	36.0	1,345	36.3	1,192	31.9	1,214	33.1
Central	755	38.8	810	39.1	766	39.2	655	33.5	681	36.2
Aiea	163	49.5	151	44.3	165	55.2	120	37.4	147	45.5
Leilehua	64	21.8	72	23.0	77	22.9	85	22.7	87	24.4
Mililani	246	47.8	232	45.8	235	44.2	187	42.8	183	40.1
Moanalua	174	41.2	241	47.9	184	44.4	172	38.2	159	41.0
Radford	58	23.9	71	26.3	74	28.6	68	24.2	68	26.4
Waialua	50	35.0	43	31.4	31	27.0	23	24.7	37	38.1
Leeward	543	34.8	570	32.4	579	33.0	537	30.2	533	29.7
Campbell	86	27.5	95	26.6	114	27.7	105	28.5	108	24.8
Nanakuli	22	15.4	23	15.0	33	19.5	19	12.5	22	13.9
Pearl City	223	61.6	229	55.7	233	55.9	212	50.2	204	48.2
Wai'anae	84	23.4	78	20.8	82	22.6	70	17.2	71	20.4
Waipahu	128	33.3	145	31.2	117	29.8	131	30.5	128	29.9
Windward	340	33.7	334	30.1	374	33.9	323	30.3	351	32.1
Castle	156	46.8	158	37.9	166	42.5	126	34.6	156	41.2
Kahuku	51	20.3	45	15.5	52	18.4	38	14.9	48	19.0
Kailua	70	31.8	73	32.7	63	32.8	72	34.3	74	33.6
Kalaheo	63	30.9	58	32.8	93	39.1	87	36.9	73	30.4
O'ahu, Special	2	12.5	2	100.0			2	28.6	3	30.0
Hawai'i Center for Deaf & Blind	1	20.0	1	100.0			1	20.0	3	42.9
Olomana	1	9.1	1	100.0			1	50.0		
Neighbor Islands	1,158	34.5	1,184	33.3	1,184	32.8	1,199	31.6	1,030	27.6
Hawai'i	514	32.9	533	31.9	502	30.8	521	29.6	440	26.5
Hilo	119	38.8	143	40.6	121	35.8	125	30.6	94	27.0
Honoka'a	47	28.7	62	32.6	32	22.2	46	25.3	31	25.6
Kanu O Ka 'Aina PCS 2/									1	25.0
Ka'u	25	36.8	22	37.9	17	30.9	13	16.7	19	26.8
Kealahou 2/									45	17.2
Kohala	19	23.5	19	24.1	17	19.5	14	18.4	16	22.2
Kona Waena	96	28.2	80	22.9	85	23.5	111	30.3	44	27.3
Laupahoehoe	11	47.8	4	13.3	7	25.0	5	25.0	5	26.3
Pahoa	25	21.9	36	27.3	34	27.0	38	31.4	41	33.3
Waiakea	172	37.1	167	34.6	189	38.7	169	33.1	144	31.2
Maui County	414	37.2	428	36.1	434	34.1	460	34.5	375	27.7
Baldwin	167	42.5	178	40.7	130	35.6	167	41.1	105	29.8
Hana	11	39.3	8	30.8	13	43.3	11	40.7	3	11.5
King Kekaulike 1/					84	34.9	63	25.5	73	26.8
Lahaina Luna	50	33.1	45	27.8	51	27.6	52	30.2	29	16.5
Lana'i	15	35.7	18	46.2	24	58.5	16	34.8	16	30.8
Maui	153	38.3	152	35.5	97	33.0	110	36.4	124	33.3
Moloka'i	18	18.0	27	28.4	35	30.4	41	31.1	25	23.8
Kaua'i	230	33.8	223	32.1	248	35.0	218	31.2	215	30.2
Kapa'a	82	32.3	67	27.6	75	30.2	88	32.7	58	24.4
Kaua'i	92	35.8	98	36.7	105	37.9	78	31.7	100	35.1
Waimea	56	33.1	58	31.7	68	37.6	52	28.4	57	30.5

TABLE 6 (cont.)

DISTRICT AND HIGH SCHOOL	Fall 1997		Fall 1998		Fall 1999		Fall 2000		Fall 2001	
	No.	Going Rate	No.	Going Rate	No.	Going Rate	No.	Going Rate	No.	Going Rate
Unknown / Miscoded									2	NA
PRIVATE SCHOOLS	849	33.6	830	32.6	848	32.7	845	31.2	733	28.0
O'ahu	772	34.8	756	33.8	798	34.8	773	32.4	691	30.2
Academy of the Pacific	9	32.1	13	35.1	14	34.1	15	40.5	9	28.1
ASSETS School	3	33.3			9	45.0	7	53.8	4	40.0
Damien	66	58.9	54	50.0	42	40.0	49	46.7	42	43.3
Hanalani 3/	9	52.9	10	40.0	14	50.0	37	108.8	11	37.9
Hawai'i Baptist Academy	45	51.1	52	57.1	41	43.6	36	39.1	44	43.6
Hawaiian Mission Academy	8	19.0	25	54.3	10	47.6	7	19.4	16	35.6
Ho'ala School 4/							2	25.0	1	25.0
Honolulu Waldorf School 5/			3	37.5	4	36.4	3	23.1	2	22.2
Iolani	46	20.5	39	17.5	36	16.5	31	13.4	39	17.7
Kailua Christian Academy	2	28.6	4	80.0	4	80.0	4	100.0	3	60.0
Kamehameha	184	41.0	149	33.6	162	36.1	126	28.6	157	36.5
Koolau Baptist	1	25.0			2	40.0	2	33.3	2	28.6
La Pietra	1	3.7	3	10.7	12	46.2	10	23.3	5	11.6
Lanakila Baptist			15	50.0	9	47.4	9	50.0	4	22.2
Lutheran High Sch Hawai'i	16	59.3	16	57.1	21	72.4	14	56.0	26	74.3
Maile Bible									1	25.0
Maryknoll	56	41.2	58	43.0	53	41.1	61	43.9	54	41.5
Mid-Pacific Institute	75	38.5	69	40.4	72	41.4	91	40.6	49	26.6
Punahou	51	12.4	59	14.5	51	12.1	42	10.0	46	11.1
Redemption Academy	3	42.9	2	25.0	2	25.0	1	7.7	3	50.0
Sacred Hearts Academy	56	62.2	50	48.5	85	58.6	49	40.5	43	36.4
Saint Andrew's Priory	8	20.0	9	23.1	5	15.2	17	38.6	10	32.3
Saint Francis	32	45.1	41	56.9	43	55.1	41	47.1	35	43.8
Saint Louis	77	55.4	57	43.2	85	53.1	87	55.4	58	40.8
University	19	38.8	21	40.4	15	38.5	21	42.0	19	39.6
Varsity	5	26.3	7	25.0	7	30.4	11	55.0	8	28.6
Hawai'i	34	20.5	38	22.6	22	13.7	36	22.1	25	14.9
Christian Liberty	1	16.7			2	25.0	3	50.0	2	22.2
Hawai'i Prep Academy	5	7.4	8	11.9	4	4.9	15	19.0	7	8.0
Makua Lani Christian	2	18.2	1	6.3			2	12.5		
Parker	10	30.3	1	5.0	3	14.3	4	16.0	2	11.1
Saint Joseph	16	33.3	28	52.8	13	34.2	12	32.4	14	31.8
Maui County	39	29.3	30	22.6	26	19.5	30	23.8	11	8.0
Ka'ahumanu Hou Christian			1	5.9	1	5.6	3	17.6	2	11.1
Molokai Christian Academy										
Saint Anthony	31	46.3	27	45.8	15	25.9	20	40.0	5	7.9
Seabury Hall	8	14.8	2	3.6	10	17.9	7	12.3	4	7.4
Kaua'i	1	10.0	3	30.0			5	16.1	5	21.7
Island School 4/							3	16.7	1	16.7
Kahili Adventist School 6/	1	10.0	3	30.0			1	14.3	3	75.0
Kula High School 4/							1	20.0	1	7.7
Unknown / Miscoded	3	NA	3	NA	2	NA	1	NA	1	NA

1/ First graduates reported June 1999.

2/ First graduates reported June 2001.

3/ Enrollment for Fall 2000 overstated (Maui CC); corrected data not available.

4/ First graduates reported June 2000.

5/ First graduates reported June 1998.

6/ First graduates reported June 1997.

Note: The "going rate" is the percentage of graduates from a given high school entering the UH campuses in the fall semester immediately following graduation from high school.

SOURCES: State of Hawai'i Department of Education; Administrative offices of private high schools.

TABLE 6A
NUMBER AND GOING RATE OF HAWAII STATE HIGH SCHOOL GRADUATES
ENTERING THE UNIVERSITY OF HAWAII AT MANOA, BY DISTRICT AND SCHOOL
FALL 1997 TO FALL 2001

DISTRICT AND HIGH SCHOOL	Fall 1997		Fall 1998		Fall 1999		Fall 2000		Fall 2001	
	No.	Going Rate	No.	Going Rate	No.	Going Rate	No.	Going Rate	No.	Going Rate
TOTAL	1,379	11.2	1,341	10.4	1,316	10.1	1,278	9.6	1,262	9.7
PUBLIC SCHOOLS	957	9.8	924	8.9	879	8.4	826	7.7	846	8.2
O'ahu, Regular	768	12.0	752	11.0	710	10.4	666	9.7	672	10.2
Honolulu	290	15.3	292	15.6	288	14.4	249	12.0	278	15.2
Anuenue 1/					1	16.7			2	50.0
Farrington	19	4.3	17	4.3	28	6.7	17	3.4	18	4.6
Kaimuki	42	15.3	47	16.3	38	12.5	29	9.9	36	15.4
Kaiser	65	22.3	59	21.1	47	19.0	36	13.2	54	19.9
Kalani	36	18.1	59	24.6	55	21.0	53	19.1	52	21.9
McKinley	75	19.8	63	18.2	63	15.5	59	13.8	55	14.2
Roosevelt	53	17.2	47	14.5	56	15.8	55	18.3	61	20.2
Leeward	401	11.4	385	10.0	354	9.5	340	9.1	308	8.4
Central	261	13.4	246	11.9	237	12.1	216	11.0	185	9.8
Aiea	60	18.2	46	13.5	55	18.4	39	12.1	41	12.7
Leilehua	19	6.5	13	4.2	18	5.4	16	4.3	10	2.8
Mililani	92	17.9	74	14.6	69	13.0	59	13.5	50	11.0
Moanalua	66	15.6	83	16.5	65	15.7	76	16.9	66	17.0
Radford	12	4.9	22	8.1	23	8.9	23	8.2	12	4.7
Waialua	12	8.4	8	5.8	7	6.1	3	3.2	6	6.2
Leeward	140	9.0	139	7.9	117	6.7	124	7.0	123	6.9
Campbell	16	5.1	14	3.9	28	6.8	18	4.9	14	3.2
Nanakuli	6	4.2	6	3.9	5	3.0	6	3.9	4	2.5
Pearl City	67	18.5	86	20.9	56	13.4	58	13.7	63	14.9
Wai'anae	16	4.5	15	4.0	7	1.9	14	3.4	17	4.9
Waipahu	35	9.1	18	3.9	21	5.3	28	6.5	25	5.8
Windward	77	7.6	75	6.8	68	6.2	77	7.2	86	7.9
Castle	37	11.1	30	7.2	33	8.4	26	7.1	38	10.0
Kahuku	16	6.4	13	4.5	4	1.4	12	4.7	14	5.5
Kailua	7	3.2	22	9.9	13	6.8	17	8.1	22	10.0
Kalaheo	17	8.3	10	5.6	18	7.6	22	9.3	12	5.0
Neighbor Islands	189	5.6	172	4.8	169	4.7	160	4.2	174	4.7
Hawaii	89	5.7	75	4.5	79	4.9	71	4.0	73	4.4
Hilo	18	5.9	17	4.8	13	3.8	14	3.4	13	3.7
Honoka'a	9	5.5	5	2.6	9	6.3	6	3.3	3	2.5
Ka'u	2	2.9	1	1.7	1	1.8	3	3.8	1	1.4
Kealakehe 2/									8	3.1
Kohala	3	3.7	4	5.1	2	2.3	2	2.6	2	2.8
Kona Waena	25	7.4	26	7.4	21	5.8	24	6.6	14	8.7
Laupahoehoe	2	8.7	1	3.3	1	3.6				
Pahoa	1	0.9	1	0.8	4	3.2	4	3.3	6	4.9
Waiakea	29	6.3	20	4.1	28	5.7	18	3.5	26	5.6
Maui County	62	5.6	59	5.0	52	4.1	65	4.9	71	5.2
Baldwin	31	7.9	31	7.1	17	4.7	26	6.4	18	5.1
Hana			1	3.8	1	3.3	2	7.4		
King Kekaulike 1/					9	3.7	13	5.3	18	6.6
Lahaina Luna	9	6.0	6	3.7	6	3.2	6	3.5	5	2.8
Lana'i	1	2.4	2	5.1	2	4.9	2	4.3	5	9.6
Maui	17	4.3	16	3.7	14	4.8	10	3.3	22	5.9
Moloka'i	4	4.0	3	3.2	3	2.6	6	4.5	3	2.9
Kaua'i	38	5.6	38	5.5	38	5.4	24	3.4	30	4.2
Kapa'a	11	4.3	10	4.1	11	4.4	9	3.3	9	3.8
Kaua'i	11	4.3	19	7.1	22	7.9	11	4.5	15	5.3
Waimea	16	9.5	9	4.9	5	2.8	4	2.2	6	3.2

TABLE 6A (cont.)

DISTRICT AND HIGH SCHOOL	Fall 1997		Fall 1998		Fall 1999		Fall 2000		Fall 2001	
	No.	Going Rate	No.	Going Rate	No.	Going Rate	No.	Going Rate	No.	Going Rate
PRIVATE SCHOOLS	422	16.7	417	16.4	437	16.9	452	16.7	416	15.9
O'ahu	407	18.3	401	17.9	426	18.6	433	18.1	403	17.6
Academy of the Pacific			1	2.7	2	4.9	4	10.8		
ASSETS School	3	33.3			4	20.0	4	30.8		
Damien	30	26.8	21	19.4	16	15.2	14	13.3	19	19.6
Hanalani	5	29.4	4	16.0	5	17.9	5	14.7	7	24.1
Hawai'i Baptist Academy	34	38.6	45	49.5	30	31.9	30	32.6	38	37.6
Hawaiian Mission Academy	4	9.5	3	6.5	3	14.3	1	2.8	2	4.4
Ho'ala School 3/							1	12.5		
Honolulu Waldorf School 4/			3	37.5	4	36.4	2	15.4		
Iolani	41	18.3	33	14.8	32	14.7	28	12.1	34	15.5
Kailua Christian Academy							1	25.0		
Kamehameha	80	17.8	76	17.1	76	16.9	69	15.7	88	20.5
La Pietra	1	3.7			8	30.8	9	20.9	4	9.3
Lanakila Baptist			1	3.3	1	5.3			2	11.1
Lutheran High Sch Hawai'i	5	18.5	5	17.9	12	41.4	9	36.0	16	45.7
Maryknoll	39	28.7	37	27.4	37	28.7	45	32.4	32	24.6
Mid-Pacific Institute	39	20.0	37	21.6	48	27.6	53	23.7	32	17.4
Punahou	44	10.7	52	12.7	43	10.2	39	9.3	37	8.9
Redemption Academy			1	12.5			1	7.7		
Sacred Hearts Academy	24	26.7	22	21.4	44	30.3	28	23.1	25	21.2
Saint Andrew's Priory	6	15.0	5	12.8	4	12.1	11	25.0	5	16.1
Saint Francis	4	5.6	13	18.1	11	14.1	13	14.9	21	26.3
Saint Louis	30	21.6	23	17.4	35	21.9	49	31.2	26	18.3
University	18	36.7	18	34.6	10	25.6	16	32.0	15	31.3
Varsity			1	3.6	1	4.3	1	5.0		
Hawai'i	5	3.0	5	3.0	5	3.1	10	6.1	8	4.8
Christian Liberty									1	11.1
Hawai'i Prep Academy	2	2.9	4	6.0	3	3.7	9	11.4	7	8.0
Parker	3	9.1			1	4.8				
Saint Joseph			1	1.9	1	2.6	1	2.7		
Maui County	10	7.5	11	8.3	6	4.5	6	4.8	4	2.9
Ka'ahumanu Hou Christian							2	11.8		
Saint Anthony	6	9.0	10	16.9					2	3.2
Seabury Hall	4	7.4	1	1.8	6	10.7	4	7.0	2	3.7
Kaua'i							2	6.5	1	4.3
Island School 3/							1	5.6		
Kula High School 3/							1	20.0	1	7.7
Unknown / Miscoded							1	NA		

1/ First graduates reported June 1999.

2/ First graduates reported June 2001.

3/ First graduates reported June 2000.

4/ First graduates reported June 1998.

Note: The "going rate" is the percentage of graduates from a given high school entering UH Manoa in the fall semester immediately following graduation from high school.

SOURCES: State of Hawai'i Department of Education; Administrative offices of private high schools.

TABLE 6B
NUMBER AND GOING RATE OF HAWAI'I STATE HIGH SCHOOL GRADUATES
ENTERING THE UNIVERSITY OF HAWAI'I AT HILO, BY DISTRICT AND SCHOOL
FALL 1997 TO FALL 2001

DISTRICT AND HIGH SCHOOL	Fall 1997		Fall 1998		Fall 1999		Fall 2000		Fall 2001	
	No.	Going Rate	No.	Going Rate	No.	Going Rate	No.	Going Rate	No.	Going Rate
TOTAL	257	2.1	239	1.9	237	1.8	235	1.8	216	1.7
PUBLIC SCHOOLS	213	2.2	199	1.9	198	1.9	202	1.9	185	1.8
O'ahu, Regular	29	0.5	26	0.4	31	0.5	23	0.3	22	0.3
Honolulu	6	0.3	6	0.3	8	0.4	8	0.4	5	0.3
Anuenue 1/					1	16.7				
Farrington							4	0.8	2	0.5
Kaimuki	1	0.4	1	0.3	1	0.3				
Kaiser	2	0.7	3	1.1	2	0.8			1	0.4
Kalani	2	1.0	1	0.4	1	0.4				
McKinley							1	0.2		
Roosevelt	1	0.3	1	0.3	3	0.8	3	1.0	2	0.7
Leeward	19	0.5	15	0.4	16	0.4	11	0.3	15	0.4
Central	11	0.6	13	0.6	14	0.7	9	0.5	10	0.5
Aiea			4	1.2	5	1.7			2	0.6
Leilehua	1	0.3	1	0.3	2	0.6	3	0.8	4	1.1
Mililani	5	1.0	6	1.2	6	1.1	3	0.7	3	0.7
Moanalua	2	0.5	1	0.2	1	0.2	1	0.2		
Radford							1	0.4		
Waialua	3	2.1	1	0.7			1	1.1	1	1.0
Leeward	8	0.5	2	0.1	2	0.1	2	0.1	5	0.3
Campbell					1	0.2	1	0.3	3	0.7
Pearl City	4	1.1			1	0.2	1	0.2	1	0.2
Wai'anae	3	0.8	1	0.3					1	0.3
Waipahu	1	0.3	1	0.2						
Windward	4	0.4	5	0.5	7	0.6	4	0.4	2	0.2
Castle	1	0.3			1	0.3				
Kahuku			1	0.3	1	0.4			1	0.4
Kailua	3	1.4	1	0.4					1	0.5
Kalaheo			3	1.7	5	2.1	4	1.7		
Neighbor Islands	184	5.5	173	4.9	167	4.6	179	4.7	163	4.4
Hawai'i	163	10.4	151	9.0	142	8.7	149	8.5	134	8.1
Hilo	43	14.0	41	11.6	40	11.8	42	10.3	29	8.3
Honoka'a	12	7.3	20	10.5	6	4.2	10	5.5	12	9.9
Kanu O Ka 'Aina PCS 2/									1	25.0
Ka'u	6	8.8	8	13.8	3	5.5	2	2.6	6	8.5
Kealakehe 2/									13	5.0
Kohala	3	3.7	6	7.6	3	3.4			7	9.7
Kona Waena	18	5.3	5	1.4	17	4.7	24	6.6	3	1.9
Laupahoehoe	3	13.0					1	5.0	2	10.5
Pahoa	11	9.6	17	12.9	6	4.8	13	10.7	12	9.8
Waiakea	67	14.4	54	11.2	67	13.7	57	11.2	49	10.6
Maui County	13	1.2	18	1.5	18	1.4	17	1.3	18	1.3
Baldwin	2	0.5	8	1.8	3	0.8	2	0.5	6	1.7
Hana					1	3.3				
King Kekaulike 1/					4	1.7	7	2.8	1	0.4
Lahaina Luna	2	1.3	6	3.7	4	2.2	2	1.2	1	0.6
Lana'i	2	4.8			1	2.4	1	2.2	2	3.8
Maui	6	1.5	2	0.5	1	0.3	1	0.3	4	1.1
Moloka'i	1	1.0	2	2.1	4	3.5	4	3.0	4	3.8
Kaua'i	8	1.2	4	0.6	7	1.0	13	1.9	11	1.5
Kapa'a	4	1.6	3	1.2	2	0.8	7	2.6	3	1.3
Kaua'i	3	1.2					2	0.8	4	1.4
Waimea	1	0.6	1	0.5	5	2.8	4	2.2	4	2.1

TABLE 6B (cont.)

DISTRICT AND HIGH SCHOOL	Fall 1997		Fall 1998		Fall 1999		Fall 2000		Fall 2001	
	No.	Going Rate	No.	Going Rate	No.	Going Rate	No.	Going Rate	No.	Going Rate
PRIVATE SCHOOLS	44	1.7	40	1.6	39	1.5	33	1.2	31	1.2
O'ahu	26	1.2	19	0.9	25	1.1	17	0.7	19	0.8
Damien			1	0.9	2	1.9			1	1.0
Hawai'i Baptist Academy	1	1.1	1	1.1						
Iolani					2	0.9	2	0.9	3	1.4
Kamehameha	15	3.3	7	1.6	12	2.7	6	1.4	13	3.0
La Pietra							1	2.3		
Lanakila Baptist			2	6.7			2	11.1		
Lutheran High Sch Hawai'i	2	7.4								
Maryknoll					1	0.8			1	0.8
Mid-Pacific Institute	3	1.5	2	1.2	3	1.7				
Punahou					1	0.2				
Sacred Hearts Academy	3	3.3	1	1.0			1	0.8	1	0.8
Saint Andrew's Priory			1	2.6						
Saint Francis	1	1.4	3	4.2	2	2.6	4	4.6		
Saint Louis	1	0.7	1	0.8	2	1.3	1	0.6		
Hawai'i	15	9.0	20	11.9	10	6.2	15	9.2	9	5.4
Christian Liberty 3/	1	16.7			2	25.0	2	33.3	1	11.1
Hawai'i Prep Academy	2	2.9	2	3.0	1	1.2	3	3.8		
Parker	2	6.1			1	4.8	3	12.0	1	5.6
Saint Joseph	10	20.8	18	34.0	6	15.8	7	18.9	7	15.9
Maui County	3	2.3			4	3.0	1	0.8	2	1.4
Saint Anthony	3	4.5			3	5.2	1	2.0		
Seabury Hall					1	1.8			2	3.7
Unknown / Miscoded			1	NA					1	NA

1/ First graduates reported June 1999.

2/ First graduates reported June 2001.

3/ Fall 1997 data corrected in Fall 1998.

Note: The "going rate" is the percentage of graduates from a given high school entering UH Hilo in the fall semester immediately following graduation from high school.

SOURCES: State of Hawai'i Department of Education; Administrative offices of private high schools.

TABLE 6C (cont.)

DISTRICT AND HIGH SCHOOL	Fall 1997		Fall 1998		Fall 1999		Fall 2000		Fall 2001	
	No.	Going Rate	No.	Going Rate	No.	Going Rate	No.	Going Rate	No.	Going Rate
PRIVATE SCHOOLS	17	0.7	18	0.7	16	0.6	14	0.5	10	0.4
O'ahu	6	0.3	2	0.1	10	0.4	6	0.3	3	0.1
Damien									1	1.0
Hanalani					1	3.6	1	2.9		
Hawaiiann Mission Academy			1	2.2						
Kamehameha	6	1.3	1	0.2	3	0.7	2	0.5	2	0.5
Mid-Pacific Institute					1	0.6	1	0.4		
Sacred Hearts Academy					2	1.4	1	0.8		
Saint Andrew's Priory							1	2.3		
Saint Francis					2	2.6				
Saint Louis					1	0.6				
Hawai'i	8	4.8	12	7.1	6	3.7	8	4.9	7	4.2
Christian Liberty							1	16.7		
Hawai'i Prep Academy	1	1.5	1	1.5			1	1.3		
Makua Lani Christian	1	9.1	1	6.3			1	6.3		
Parker	1	3.0	1	5.0			1	4.0	1	5.6
Saint Joseph	5	10.4	9	17.0	6	15.8	4	10.8	6	13.6
Maui County	3	2.3	2	1.5						
Saint Anthony	3	4.5	2	3.4						
Unknown / Miscoded			2	NA						

1/ First graduates reported June 2001.

Note: The "going rate" is the percentage of graduates from a given high school entering Hawai'i Community College in the fall semester immediately following graduation from high school.

SOURCES: State of Hawai'i Department of Education; Administrative offices of private high schools.

TABLE 6D
NUMBER AND GOING RATE OF HAWAI'I STATE HIGH SCHOOL GRADUATES
ENTERING HONOLULU COMMUNITY COLLEGE, BY DISTRICT AND SCHOOL
FALL 1997 TO FALL 2001

DISTRICT AND HIGH SCHOOL	Fall 1997		Fall 1998		Fall 1999		Fall 2000		Fall 2001	
	No.	Going Rate	No.	Going Rate	No.	Going Rate	No.	Going Rate	No.	Going Rate
TOTAL	408	3.3	466	3.6	459	3.5	418	3.1	338	2.6
PUBLIC SCHOOLS	360	3.7	428	4.1	415	4.0	377	3.5	305	3.0
O'ahu, Regular	340	5.3	407	6.0	388	5.7	350	5.1	282	4.3
Honolulu	134	7.1	178	9.5	173	8.7	163	7.9	116	6.3
Anuenue 1/					1	16.7			1	25.0
Farrington	38	8.5	50	12.8	63	15.1	52	10.4	40	10.2
Kaimuki	16	5.8	20	6.9	16	5.3	23	7.8	9	3.8
Kaiser	11	3.8	13	4.6	6	2.4	16	5.9	2	0.7
Kalani	10	5.0	13	5.4	18	6.9	16	5.8	6	2.5
McKinley	36	9.5	58	16.7	50	12.3	35	8.2	37	9.6
Roosevelt	23	7.5	24	7.4	19	5.4	21	7.0	21	7.0
Leeward	150	4.3	185	4.8	184	5.0	153	4.1	134	3.6
Central	105	5.4	115	5.6	119	6.1	93	4.8	79	4.2
Aiea	23	7.0	22	6.5	22	7.4	18	5.6	15	4.6
Leilehua	6	2.0	3	1.0	2	0.6	6	1.6	15	4.2
Mililani	20	3.9	14	2.8	30	5.6	25	5.7	13	2.9
Moanalua	37	8.8	50	9.9	45	10.9	26	5.8	25	6.4
Radford	13	5.3	15	5.6	14	5.4	13	4.6	10	3.9
Waialua	6	4.2	11	8.0	6	5.2	5	5.4	1	1.0
Leeward	45	2.9	70	4.0	65	3.7	60	3.4	55	3.1
Campbell	3	1.0	13	3.6	12	2.9	14	3.8	12	2.8
Nanakuli	2	1.4	2	1.3	3	1.8	2	1.3	1	0.6
Pearl City	19	5.2	23	5.6	27	6.5	20	4.7	11	2.6
Wai'anae	7	1.9	7	1.9	12	3.3	9	2.2	9	2.6
Waipahu	14	3.6	25	5.4	11	2.8	15	3.5	22	5.1
Windward	56	5.6	44	4.0	31	2.8	34	3.2	32	2.9
Castle	31	9.3	20	4.8	9	2.3	13	3.6	15	4.0
Kahuku	3	1.2	6	2.1	7	2.5	4	1.6	3	1.2
Kailua	11	5.0	11	4.9	7	3.6	13	6.2	6	2.7
Kalaheo	11	5.4	7	4.0	8	3.4	4	1.7	8	3.3
O'ahu, Special							1	14.3		
Olomana							1	50.0		
Neighbor Islands	20	0.6	21	0.6	27	0.7	26	0.7	23	0.6
Hawai'i	10	0.6	6	0.4	7	0.4	7	0.4	6	0.4
Hilo			1	0.3	1	0.3	1	0.2	2	0.6
Honoka'a	4	2.4	2	1.1	1	0.7	1	0.5	1	0.8
Ka'u	1	1.5								
Kohala			1	1.3						
Kona Waena	4	1.2	1	0.3	2	0.6	3	0.8	1	0.6
Pahoa	1	0.9					1	0.8	1	0.8
Waiakea			1	0.2	3	0.6	1	0.2	1	0.2
Maui County	6	0.5	6	0.5	10	0.8	10	0.8	11	0.8
Baldwin			1	0.2						
King Kekaulike 1/					1	0.4	1	0.4		
Lahaina Luna							1	0.6		
Lana'i			1	2.6	1	2.4	1	2.2	1	1.9
Maui	1	0.3	2	0.5	4	1.4	1	0.3	5	1.3
Moloka'i	5	5.0	2	2.1	4	3.5	6	4.5	5	4.8
Kaua'i	4	0.6	9	1.3	10	1.4	9	1.3	6	0.8
Kapa'a	1	0.4	2	0.8	6	2.4	5	1.9	1	0.4
Kaua'i	2	0.8	3	1.1	3	1.1	1	0.4	4	1.4
Waimea	1	0.6	4	2.2	1	0.6	3	1.6	1	0.5

TABLE 6D (cont.)

DISTRICT AND HIGH SCHOOL	Fall 1997		Fall 1998		Fall 1999		Fall 2000		Fall 2001	
	No.	Going Rate	No.	Going Rate	No.	Going Rate	No.	Going Rate	No.	Going Rate
PRIVATE SCHOOLS	48	1.9	38	1.5	44	1.7	41	1.5	33	1.3
O'ahu	44	2.0	36	1.6	44	1.9	41	1.7	33	1.4
Academy of the Pacific	2	7.1			1	2.4				
Damien	7	6.3	5	4.6	7	6.7	7	6.7	6	6.2
Hawai'i Baptist Academy	1	1.1								
Hawaiian Mission Academy			1	2.2	2	9.5			5	7.0
Kamehameha	11	2.4	11	2.5	19	4.2	12	2.7	4	0.9
Koolau Baptist	1	25.0			1	20.0			1	14.3
Lanakila Baptist			2	6.7			1	5.6	1	5.6
Lutheran High Sch Hawai'i	1	3.7					5	20.0	1	2.9
Maryknoll	2	1.5	2	1.5	2	1.6			2	1.5
Mid-Pacific Institute	4	2.1	2	1.2			3	1.3	1	0.5
Punahou			2	0.5					1	0.2
Sacred Hearts Academy	1	1.1	1	1.0	2	1.4	3	2.5	1	0.8
Saint Andrew's Priory									1	3.2
Saint Francis	3	4.2	3	4.2	1	1.3	1	1.1	2	2.5
Saint Louis	11	7.9	4	3.0	8	5.0	8	5.1	5	3.5
University			1	1.9	1	2.6			1	2.1
Varsity			2	7.1			1	5.0	1	3.6
Hawai'i	1	0.6								
Parker	1	3.0								
Maui County			2	1.5						
Ka'ahumanu Hou Christian			1	5.9						
Saint Anthony			1	1.7						
Unknown / Miscoded	3	NA								

1/ First graduates reported June 1999.

Note: The "going rate" is the percentage of graduates from a given high school entering Honolulu Community College in the fall semester immediately following graduation from high school.

SOURCES: State of Hawai'i Department of Education; Administrative offices of private high schools.

TABLE 6E
NUMBER AND GOING RATE OF HAWAII STATE HIGH SCHOOL GRADUATES
ENTERING KAPI'OLANI COMMUNITY COLLEGE, BY DISTRICT AND SCHOOL
FALL 1997 TO FALL 2001

DISTRICT AND HIGH SCHOOL	Fall 1997		Fall 1998		Fall 1999		Fall 2000		Fall 2001	
	No.	Going Rate	No.	Going Rate	No.	Going Rate	No.	Going Rate	No.	Going Rate
TOTAL	794	6.4	828	6.4	914	7.0	725	5.4	686	5.3
PUBLIC SCHOOLS	611	6.2	661	6.4	738	7.1	581	5.4	571	5.5
O'ahu, Regular	572	8.9	587	8.6	657	9.6	504	7.3	496	7.5
Honolulu	410	21.6	394	21.0	450	22.5	348	16.8	351	19.2
Anuenue 1/					1	16.7				
Farrington	68	15.2	48	12.3	63	15.1	48	9.6	33	8.4
Kaimuki	68	24.8	63	21.8	76	25.1	57	19.5	60	25.6
Kaiser	61	20.9	59	21.1	82	33.2	46	16.9	45	16.6
Kalani	63	31.7	72	30.0	94	35.9	80	28.8	76	32.1
McKinley	70	18.5	67	19.3	65	16.0	59	13.8	68	17.6
Roosevelt	80	26.0	85	26.2	69	19.5	58	19.3	69	22.8
Leeward	92	2.6	128	3.3	127	3.4	103	2.8	101	2.8
Central	58	3.0	77	3.7	75	3.8	57	2.9	61	3.2
Aiea	23	7.0	21	6.2	20	6.7	12	3.7	25	7.7
Leilehua	4	1.4	3	1.0	7	2.1	7	1.9	1	0.3
Mililani	6	1.2	18	3.6	13	2.4	3	0.7	5	1.1
Moanalua	18	4.3	27	5.4	21	5.1	25	5.6	22	5.7
Radford	5	2.1	6	2.2	9	3.5	8	2.8	6	2.3
Waialua	2	1.4	2	1.5	5	4.3	2	2.2	2	2.1
Leeward	34	2.2	51	2.9	52	3.0	46	2.6	40	2.2
Campbell	7	2.2	12	3.4	14	3.4	15	4.1	11	2.5
Nanakuli	1	0.7	4	2.6	4	2.4			2	1.3
Pearl City	14	3.9	13	3.2	22	5.3	22	5.2	14	3.3
Wai'anae	2	0.6	10	2.7	3	0.8	4	1.0	1	0.3
Waipahu	10	2.6	12	2.6	9	2.3	5	1.2	12	2.8
Windward	70	6.9	65	5.9	80	7.3	53	5.0	44	4.0
Castle	35	10.5	30	7.2	42	10.7	24	6.6	22	5.8
Kahuku	4	1.6	4	1.4	2	0.7	3	1.2	1	0.4
Kailua	22	10.0	16	7.2	19	9.9	16	7.6	15	6.8
Kalaheo	9	4.4	15	8.5	17	7.1	10	4.2	6	2.5
O'ahu, Special	2	12.5	1	50.0			1	14.3	3	30.0
Hawai'i Center for Deaf & Blind	1	20.0	1	100.0			1	20.0	3	42.9
Olomana	1	9.1								
Neighbor Islands	37	1.1	73	2.1	81	2.2	76	2.0	72	1.9
Hawai'i	14	0.9	26	1.6	36	2.2	35	2.0	27	1.6
Hilo	3	1.0	1	0.3	6	1.8	4	1.0		
Honoka'a			5	2.6	3	2.1	1	0.5		
Ka'u	1	1.5			2	3.6				
Kealakehe 2/									3	1.1
Kohala	2	2.5	1	1.3	2	2.3	2	2.6		
Kona Waena	5	1.5	12	3.4	10	2.8	16	4.4	8	5.0
Laupahoehoe									2	10.5
Pahoa			2	1.5			1	0.8	6	4.9
Waiakea	3	0.6	5	1.0	13	2.7	11	2.2	8	1.7
Maui County	16	1.4	29	2.4	19	1.5	21	1.6	17	1.3
Baldwin	7	1.8	3	0.7	2	0.5	8	2.0	2	0.6
Hana			1	3.8					2	7.7
King Kekaulike 1/					1	0.4	1	0.4		
Lahaina Luna	2	1.3	4	2.5	7	3.8	3	1.7	2	1.1
Lana'i	1	2.4	7	17.9	2	4.9	1	2.2		
Maui	6	1.5	9	2.1	3	1.0	6	2.0	8	2.2
Moloka'i			5	5.3	4	3.5	2	1.5	3	2.9
Kaua'i	7	1.0	18	2.6	26	3.7	20	2.9	28	3.9
Kapa'a	2	0.8	9	3.7	9	3.6	3	1.1	15	6.3
Kauai	3	1.2	6	2.2	12	4.3	13	5.3	3	1.1
Waimea	2	1.2	3	1.6	5	2.8	4	2.2	10	5.3

TABLE 6E (cont.)

DISTRICT AND HIGH SCHOOL	Fall 1997		Fall 1998		Fall 1999		Fall 2000		Fall 2001	
	No.	Going Rate	No.	Going Rate	No.	Going Rate	No.	Going Rate	No.	Going Rate
PRIVATE SCHOOLS	183	7.2	167	6.6	176	6.8	144	5.3	115	4.4
O'ahu	178	8.0	166	7.4	174	7.6	142	5.9	113	4.9
Academy of the Pacific	5	17.9	9	24.3	10	24.4	9	24.3	5	15.6
ASSETS School					4	20.0	1	7.7	1	10.0
Damien	15	13.4	14	13.0	6	5.7	13	12.4	9	9.3
Hanalani					1	3.6	1	2.9	1	3.4
Hawai'i Baptist Academy	8	9.1	3	3.3	10	10.6	4	4.3	4	4.0
Hawaiian Mission Academy	3	7.1	15	32.6	4	19.0	2	5.6	6	13.3
Honolulu Waldorf School 3/							1	7.7	2	22.2
Iolani	5	2.2	4	1.8	1	0.5	1	0.4	1	0.5
Kailua Christian Academy			1	20.0			1	25.0	1	20.0
Kamehameha	27	6.0	12	2.7	21	4.7	10	2.3	16	3.7
La Pietra			3	10.7	4	15.4			1	2.3
Lanakila Baptist			1	3.3						
Lutheran High Sch Hawai'i	6	22.2	7	25.0	9	31.0			4	11.4
Maile Bible									1	25.0
Maryknoll	11	8.1	9	6.7	12	9.3	11	7.9	15	11.5
Mid-Pacific Institute	22	11.3	19	11.1	16	9.2	24	10.7	10	5.4
Punahou	7	1.7	4	1.0	5	1.2	1	0.2	6	1.4
Redemption Academy	2	28.6								
Sacred Hearts Academy	21	23.3	21	20.4	24	16.6	11	9.1	7	5.9
Saint Andrew's Priory	2	5.0	2	5.1	1	3.0	3	6.8		
Saint Francis	12	16.9	15	20.8	11	14.1	19	21.8	3	3.8
Saint Louis	28	20.1	22	16.7	26	16.3	17	10.8	15	10.6
University	1	2.0	1	1.9	3	7.7	5	10.0	2	4.2
Varsity	3	15.8	4	14.3	6	26.1	8	40.0	3	10.7
Hawai'i	5	3.0			1	0.6	2	1.2	1	0.6
Hawai'i Prep Academy							1	1.3		
Makua Lani Christian	1	9.1					1	6.3		
Parker	3	9.1			1	4.8				
Saint Joseph	1	2.1							1	2.3
Maui County			1	0.8					1	0.7
Saint Anthony									1	1.6
Seabury Hall			1	1.8						
Unknown / Miscoded					1	NA				

1/ First graduates reported June 1999.

2/ First graduates reported June 2001.

3/ First graduates reported June 1998.

Note: The "going rate" is the percentage of graduates from a given high school entering Kapi'olani Community College in the fall semester immediately following graduation from high school.

SOURCES: State of Hawai'i Department of Education; Administrative offices of private high schools.

TABLE 6F
NUMBER AND GOING RATE OF HAWAII STATE HIGH SCHOOL GRADUATES
ENTERING KAUA'I COMMUNITY COLLEGE, BY DISTRICT AND SCHOOL
FALL 1997 TO FALL 2001

DISTRICT AND HIGH SCHOOL	Fall 1997		Fall 1998		Fall 1999		Fall 2000		Fall 2001	
	No.	Going Rate	No.	Going Rate	No.	Going Rate	No.	Going Rate	No.	Going Rate
TOTAL	173	1.4	144	1.1	160	1.2	148	1.1	145	1.1
PUBLIC SCHOOLS	169	1.7	135	1.3	158	1.5	145	1.4	137	1.3
O'ahu, Regular	1	<0.1					2	<0.1		
Leeward	1	0.0					1	<0.1		
Central	1	0.1								
Mililani	1	0.2								
Leeward							1	0.1		
Wai'anae							1	0.2		
Windward							1	0.1		
Kahuku							1	0.4		
Neighbor Islands	168	5.0	135	3.8	158	4.4	143	3.8	137	3.7
Hawai'i	8	0.5			1	0.1	1	0.1	3	0.2
Hilo	1	0.3								
Ka'u	6	8.8					1	1.3		
Kona Waena	1	0.3							1	0.8
Pahoa									2	0.4
Waiakea					1	0.2				
Maui County			1	0.1			1	0.1		
Lana'i			1	2.6						
Moloka'i							1	0.8		
Kaua'i	160	23.5	134	19.3	157	22.1	141	20.2	134	18.8
Kapa'a	61	24.0	39	16.0	45	18.1	57	21.2	28	11.8
Kauai	63	24.5	59	22.1	67	24.2	49	19.9	72	25.3
Waimea	36	21.3	36	19.7	45	24.9	35	19.1	34	18.2
PRIVATE SCHOOLS	4	0.2	9	0.4	2	0.1	3	0.1	8	0.3
O'ahu	3	0.1	6	0.3	2	0.1			4	0.2
Hawaiian Mission Academy	1	2.4	1	2.2					1	0.2
Kamehameha	2	0.4	4	0.9	2	0.4			3	3.8
Saint Francis			1	1.4						
Kaua'i	1	10.0	3	30.0			3	9.7	4	17.4
Island School 1/							2	11.1	1	16.7
Kahili Adventist School 2/	1	10.0	3	30.0			1	14.3	3	75.0

1/ First graduates reported June 2000.

2/ First graduates reported June 1997.

Note: The "going rate" is the percentage of graduates from a given high school entering Kaua'i Community College in the fall semester immediately following graduation from high school.

SOURCES: State of Hawai'i Department of Education; Administrative offices of private high schools.

TABLE 6G
NUMBER AND GOING RATE OF HAWAII STATE HIGH SCHOOL GRADUATES
ENTERING LEEWARD COMMUNITY COLLEGE, BY DISTRICT AND SCHOOL
FALL 1997 TO FALL 2001

DISTRICT AND HIGH SCHOOL	Fall 1997		Fall 1998		Fall 1999		Fall 2000		Fall 2001	
	No.	Going Rate	No.	Going Rate	No.	Going Rate	No.	Going Rate	No.	Going Rate
TOTAL	742	6.0	776	6.0	776	6.0	679	5.1	767	5.9
PUBLIC SCHOOLS	662	6.8	687	6.6	698	6.7	604	5.7	698	6.8
O'ahu, Regular	651	10.2	675	9.9	685	10.1	593	8.6	684	10.4
Honolulu	16	0.8	14	0.7	14	0.7	13	0.6	14	0.8
Farrington	10	2.2	5	1.3	7	1.7	6	1.2	7	1.8
Kaimuki	2	0.7	4	1.4	1	0.3	1	0.3	2	0.9
Kalani			1	0.4	1	0.4				
McKinley	2	0.5	2	0.6	3	0.7	4	0.9	1	0.3
Roosevelt	2	0.6	2	0.6	2	0.6	2	0.7	4	1.3
Leeward	617	17.6	655	17.1	653	17.6	567	15.2	652	17.8
Central	308	15.8	350	16.9	317	16.2	270	13.8	345	18.4
Aiea	57	17.3	56	16.4	63	21.1	50	15.6	63	19.5
Leilehua	31	10.5	52	16.6	47	14.0	53	14.2	57	16.0
Mililani	119	23.1	118	23.3	115	21.6	94	21.5	112	24.6
Moanalua	49	11.6	75	14.9	51	12.3	40	8.9	46	11.9
Radford	27	11.1	28	10.4	28	10.8	23	8.2	40	15.5
Waialua	25	17.5	21	15.3	13	11.3	10	10.8	27	27.8
Leeward	309	19.8	305	17.3	336	19.2	297	16.7	307	17.1
Campbell	59	18.8	56	15.7	56	13.6	57	15.5	68	15.6
Nanakuli	11	7.7	11	7.2	19	11.2	8	5.3	15	9.5
Pearl City	119	32.9	107	26.0	127	30.5	109	25.8	114	27.0
Wai'anae	53	14.8	44	11.7	59	16.3	41	10.1	42	12.1
Waipahu	67	17.4	87	18.7	75	19.1	82	19.1	68	15.9
Windward	18	1.8	6	0.5	18	1.6	13	1.2	18	1.6
Castle	1	0.3	2	0.5	2	0.5	2	0.5	2	0.5
Kahuku	13	5.2	3	1.0	15	5.3	4	1.6	11	4.3
Kailua	3	1.4	1	0.4	1	0.5			3	1.4
Kalaheo	1	0.5					7	3.0	2	0.8
Neighbor Islands	11	0.3	12	0.3	13	0.4	11	0.3	14	0.4
Hawaii	1	0.1	2	0.1	5	0.3	5	0.3	7	0.4
Hilo							2	0.5	1	0.3
Honoka'a			1	0.5			1	0.5		
Kealakehe 1/									2	0.8
Kohala					1	1.1				
Kona Waena	1	0.3			1	0.3			3	1.9
Waiakea			1	0.2	3	0.6	2	0.4	1	0.2
Maui County	10	0.9	4	0.3	7	0.6	3	0.2	6	0.4
Baldwin					1	0.3	1	0.2	2	0.6
Hana			1	3.8						
Lahaina Luna	2	1.3					1	0.6		
Lana'i	4	9.5	3	7.7	4	9.8			2	3.8
Maui	4	1.0			2	0.7			2	0.5
Moloka'i							1	0.8		
Kaua'i			6	0.9	1	0.1	3	0.4	1	0.1
Kapa'a			1	0.4	1	0.4	2	0.7		
Kaua'i			4	1.5			1	0.4		
Waimea			1	0.5					1	0.5

TABLE 6G (cont.)

DISTRICT AND HIGH SCHOOL	Fall 1997		Fall 1998		Fall 1999		Fall 2000		Fall 2001	
	No.	Going Rate	No.	Going Rate	No.	Going Rate	No.	Going Rate	No.	Going Rate
PRIVATE SCHOOLS	80	3.2	89	3.5	78	3.0	75	2.8	69	2.6
O'ahu	80	3.6	89	4.0	78	3.4	75	3.1	69	3.0
Academy of the Pacific	1	3.6	2	5.4					2	6.3
ASSETS School					1	5.0	2	15.4	3	30.0
Damien	12	10.7	12	11.1	10	9.5	10	9.5	3	3.1
Hanalani	4	23.5	6	24.0	7	25.0	9	26.5	3	10.3
Hawai'i Baptist Academy			1	1.1			2	2.2	1	1.0
Hawaiian Mission Academy			3	6.5	1	4.8	3	8.3	1	2.2
Ho'ala School 2/							1	12.5	1	25.0
Iolani			2	0.9	1	0.5			1	0.5
Kailua Christian Academy			1	20.0						
Kamehameha	32	7.1	24	5.4	14	3.1	17	3.9	18	4.2
Lanakila Baptist			9	30.0	8	42.1	6	33.3	1	5.6
Lutheran High Sch Hawai'i	1	3.7	2	7.1					2	5.7
Maryknoll	3	2.2	5	3.7			3	2.2	4	3.1
Mid-Pacific Institute	5	2.6	6	3.5	2	1.1	6	2.7	6	3.3
Punahou					1	0.2			2	0.5
Redemption Academy									1	16.7
Sacred Hearts Academy	6	6.7	3	2.9	12	8.3	4	3.3	7	5.9
Saint Andrew's Priory			1	2.6					1	3.2
Saint Francis	8	11.3	6	8.3	13	16.7	2	2.3	4	5.0
Saint Louis	6	4.3	5	3.8	7	4.4	9	5.7	6	4.2
University			1	1.9	1	2.6			1	2.1
Varsity	2	10.5					1	5.0	1	3.6

1/ First graduates reported June 2001.

2/ First graduates reported June 2000.

Note: The "going rate" is the percentage of graduates from a given high school entering Leeward Community College in the fall semester immediately following graduation from high school.

SOURCES: State of Hawai'i Department of Education; Administrative offices of private high schools.

TABLE 6H (cont.)

DISTRICT AND HIGH SCHOOL	Fall 1997		Fall 1998		Fall 1999		Fall 2000 1/		Fall 2001	
	No.	Going Rate	No.	Going Rate	No.	Going Rate	No.	Going Rate	No.	Going Rate
PRIVATE SCHOOLS	25	1.0	21	0.8	21	0.8	53	2.0	14	0.5
O'ahu	2	0.1	7	0.3	5	0.2	29	1.2	10	0.4
Damien							1	1.0		
Hanalani							21	61.8		
Hawaiian Mission Academy							1	2.8	1	2.2
Kamehameha	2	0.4	7	1.6	4	0.9	4	0.9	7	1.6
Punahou					1	0.2				
Saint Andrew's Priory							2	4.5	2	6.5
Hawai'i							1	0.6		
Hawai'i Prep Academy							1	1.3		
Maui County	23	17.3	14	10.5	16	12.0	23	18.3	4	2.9
Ka'ahumanu Hou Christian					1	5.6	1	5.9	2	11.1
Saint Anthony	19	28.4	14	23.7	12	20.7	19	38.0	2	3.2
Seabury Hall	4	7.4			3	5.4	3	5.3		

1/ Data for Fall 2000 overstated; corrected data not available.

2/ First graduates reported June 1999.

Note: The "going rate" is the percentage of graduates from a given high school entering Maui Community College in the fall semester immediately following graduation from high school.

SOURCES: State of Hawai'i Department of Education; Administrative offices of private high schools.

TABLE 6I (cont.)

DISTRICT AND HIGH SCHOOL	Fall 1997		Fall 1998		Fall 1999		Fall 2000		Fall 2001	
	No.	Going Rate	No.	Going Rate	No.	Going Rate	No.	Going Rate	No.	Going Rate
PRIVATE SCHOOLS	26	1.0	31	1.2	35	1.4	30	1.1	37	1.4
O'ahu	26	1.2	30	1.3	34	1.5	30	1.3	37	1.6
Academy of the Pacific	1	3.6	1	2.7	1	2.4	2	5.4	2	6.3
Damien	2	1.8	1	0.9	1	1.0	4	3.8	3	3.1
Hawai'i Baptist Academy	1	1.1	2	2.2	1	1.1			1	1.0
Hawaiian Mission Academy			1	2.2					1	2.2
Kailua Christian Academy	2	28.6	2	40.0	4	80.0	2	50.0	2	40.0
Kamehameha	9	2.0	7	1.6	11	2.4	6	1.4	8	1.9
Koolau Baptist					1	20.0	2	33.3	1	14.3
Lutheran High Sch Hawai'i	1	3.7	2	7.1					3	8.6
Maryknoll	1	0.7	5	3.7	1	0.8	2	1.4		
Mid-Pacific Institute	2	1.0	3	1.8	2	1.1	4	1.8		
Punahou			1	0.2			2	0.5		
Redemption Academy	1	14.3	1	12.5	2	25.0			2	33.3
Sacred Hearts Academy	1	1.1	2	1.9	1	0.7	1	0.8	2	1.7
Saint Andrew's Priory									1	3.2
Saint Francis	4	5.6			3	3.8	2	2.3	2	2.5
Saint Louis	1	0.7	2	1.5	6	3.8	3	1.9	6	4.2
Varsity									3	10.7
Hawai'i			1	0.6						
Hawai'i Prep Academy			1	1.5						
Unknown / Miscoded					1	NA				

1/ First graduates reported June 2001.

Note: The "going rate" is the percentage of graduates from a given high school entering Windward Community College in the fall semester immediately following graduation from high school.

SOURCES: State of Hawai'i Department of Education; Administrative offices of private high schools.

APPENDIX 1
 JUNE HAWAI'I HIGH SCHOOL GRADUATES
 BY HIGH SCHOOL DISTRICT AND HIGH SCHOOL
 JUNE 1997 TO JUNE 2001

DISTRICT AND SCHOOL	JUNE 1997	JUNE 1998	JUNE 1999	JUNE 2000	JUNE 2001
TOTAL	12,312	12,915	13,017	13,379	12,945
PUBLIC SCHOOLS	9,784	10,369	10,425	10,671	10,330
O'ahu, Regular	6,413	6,812	6,809	6,872	6,591
Honolulu	1,898	1,872	1,997	2,072	1,827
Anuenue 1/			6	3	4
Farrington	447	391	418	498	393
Kaimuki	274	289	303	293	234
Kaiser	292	280	247	272	271
Kalani	199	240	262	278	237
McKinley	378	347	407	428	386
Roosevelt	308	325	354	300	302
Leeward	3,507	3,832	3,709	3,735	3,672
Central	1,946	2,071	1,955	1,956	1,879
Aiea	329	341	299	321	323
Leilehua	294	313	336	374	357
Mililani	515	507	532	437	456
Moanalua	422	503	414	450	388
Radford	243	270	259	281	258
Waialua	143	137	115	93	97
Leeward	1,561	1,761	1,754	1,779	1,793
Campbell	313	357	412	368	436
Nanakuli	143	153	169	152	158
Pearl City	362	411	417	422	423
Wai'anae	359	375	363	407	348
Waipahu	384	465	393	430	428
Windward	1,008	1,108	1,103	1,065	1,092
Castle	333	417	391	364	379
Kahuku	251	291	282	255	253
Kailua	220	223	192	210	220
Kalaheo	204	177	238	236	240
O'ahu, Special	16	2	8	7	10
Hawai'i Center for Deaf & Blind ...	5	1	7	5	7
Olomana	11	1	1	2	3
Neighbor Islands	3,355	3,555	3,608	3,792	3,729
Hawai'i	1,561	1,673	1,628	1,762	1,661
Hilo	307	352	338	408	348
Honoka'a	164	190	144	182	121
Kanu O Ka 'Aina PCS 2/					4
Ka'u	68	58	55	78	71
Kealahou 2/					262
Kohala	81	79	87	76	72
Kona Waena	340	350	361	366	161
Laupahoehoe	23	30	28	20	19
Pahoa	114	132	126	121	123
Waiakea	464	482	489	511	462
Waters of Life PCS 2/					3
West HI Expl Acad PCS 2/					15
Maui County	1,114	1,187	1,271	1,332	1,355
Baldwin	393	437	365	406	352
Hana	28	26	30	27	26
King Kekaulike 1/			241	247	272
Lahaina Luna	151	162	185	172	176
Lana'i	42	39	41	46	52
Maui	400	428	294	302	372
Moloka'i	100	95	115	132	105

APPENDIX 1 (cont.)

DISTRICT AND SCHOOL	JUNE 1997	JUNE 1998	JUNE 1999	JUNE 2000	JUNE 2001
Kaua'i	680	695	709	698	713
Kapa'a	254	243	248	269	238
Kaua'i	257	267	277	246	285
Ni'ihau		2	3		3
Waimea	169	183	181	183	187
PRIVATE SCHOOLS	2,528	2,546	2,592	2,708	2,615
O'ahu	2,219	2,235	2,296	2,388	2,286
Academy of the Pacific	28	37	41	37	32
ASSETS School	9		20	13	10
Damien	112	108	105	105	97
Hale O Ulu School	13	8	13	8	15
Hanalani	17	25	28	34	29
Hawai'i Baptist Academy	88	91	94	92	101
Hawaiian Mission Academy	42	46	21	36	45
Ho'ala School 3/				8	4
Honolulu Waldorf School 4/		8	11	13	9
Iolani	224	223	218	232	220
Kailua Christian Academy	7	5	5	4	5
Kamehameha	449	444	449	440	430
Koolau Baptist	4	5	5	6	7
La Pietra	27	28	26	43	43
Lanakila Baptist	13	30	19	18	18
Lutheran High School of Hawai'i	27	28	29	25	35
Maile Bible	1	1	3		4
Maryknoll	136	135	129	139	130
Mid-Pacific Institute	195	171	174	224	184
Punahou	412	408	420	419	415
Redemption Academy	7	8	8	13	6
Sacred Hearts Academy	90	103	145	121	118
Saint Andrew's Priory	40	39	33	44	31
Saint Francis	71	72	78	87	80
Saint Louis	139	132	160	157	142
University Lab	49	52	39	50	48
Varsity	19	28	23	20	28
Hawai'i	166	168	161	163	168
Christian Liberty 5/	6	12	8	6	9
Hawai'i Prep Academy	68	67	81	79	87
Makua Lani Christian	11	16	13	16	10
Parker	33	20	21	25	18
Saint Joseph	48	53	38	37	44
Maui County	133	133	133	126	138
Ka'ahumanu Hou Christian	12	17	18	17	18
Molokai Christian Acad		1	1	2	3
Saint Anthony	67	59	58	50	63
Seabury Hall	54	56	56	57	54
Kaua'i	10	10	2	31	23
Island School 3/				18	6
Kahili Adventist School 6/	10	10	2	7	4
Kaua'i Christian Academy				1	
Kula High School 3/				5	13

1/ First graduating class June 1999.

2/ First graduating class June 2001.

3/ First graduating class June 2000.

4/ First graduating class June 1998.

5/ Fall 1997 data corrected in Fall 1998.

6/ First graduating class June 1997.

SOURCE: Department of Education, State of Hawai'i; Administrative offices of private high schools.

APPENDIX 2
 JUNE HAWAII HIGH SCHOOL GRADUATES, BY ISLAND
 AND BY PUBLIC AND PRIVATE HIGH SCHOOL
 JUNE 1991 TO JUNE 2001

June	Total	O'ahu	Hawai'i	Maui	Kaua'i	Public	O'ahu	Hawai'i	Maui	Kaua'i	Private	O'ahu	Hawai'i	Maui	Kaua'i
1991	11,877	8,827	1,390	1,081	579	9,482	6,669	1,255	983	575	2,395	2,158	135	98	4
1992	12,015	8,814	1,525	1,121	555	9,615	6,654	1,396	1,011	554	2,400	2,160	129	110	1
1993	11,675	8,473	1,489	1,140	573	9,320	6,393	1,339	1,016	572	2,355	2,080	150	124	1
1994	12,353	8,832	1,667	1,188	666	9,870	6,661	1,501	1,048	660	2,483	2,171	166	140	6
1995	12,434	8,810	1,766	1,221	637	9,984	6,663	1,615	1,073	633	2,450	2,147	151	148	4
1996	12,482	8,781	1,755	1,224	722	9,995	6,597	1,577	1,099	722	2,487	2,184	178	125	
1997	12,312	8,648	1,727	1,247	690	9,784	6,429	1,561	1,114	680	2,528	2,219	166	133	10
1998	12,915	9,049	1,841	1,320	705	10,369	6,814	1,673	1,187	695	2,546	2,235	168	133	10
1999	13,017	9,113	1,789	1,404	711	10,425	6,817	1,628	1,271	709	2,592	2,296	161	133	2
2000	13,379	9,267	1,925	1,458	729	10,671	6,879	1,762	1,332	698	2,708	2,388	163	126	31
2001	12,945	8,887	1,829	1,493	736	10,330	6,601	1,661	1,355	713	2,615	2,286	168	138	23

June	Total	O'ahu	Hawai'i	Maui	Kaua'i	Public	O'ahu	Hawai'i	Maui	Kaua'i	Private	O'ahu	Hawai'i	Maui	Kaua'i
1991	100.0	74.3	11.7	9.1	4.9	79.8	56.2	10.6	8.3	4.8	20.2	18.2	1.1	0.8	<0.1
1992	100.0	73.4	12.7	9.3	4.6	80.0	55.4	11.6	8.4	4.6	20.0	18.0	1.1	0.9	<0.1
1993	100.0	72.5	12.8	9.8	4.9	79.8	54.8	11.5	8.7	4.9	20.2	17.8	1.3	1.1	<0.1
1994	100.0	71.5	13.5	9.6	5.4	79.9	53.9	12.2	8.5	5.3	20.1	17.6	1.3	1.1	<0.1
1995	100.0	70.9	14.2	9.8	5.1	80.3	53.6	13.0	8.6	5.1	19.7	17.3	1.2	1.2	<0.1
1996	100.0	70.3	14.1	9.8	5.8	80.1	52.9	12.6	8.8	5.8	19.9	17.5	1.4	1.0	
1997	100.0	70.3	14.0	10.1	5.6	79.5	52.2	12.7	9.0	5.5	20.5	18.0	1.3	1.1	0.1
1998	100.0	70.0	14.3	10.2	5.5	80.3	52.8	13.0	9.2	5.4	19.7	17.3	1.3	1.0	0.1
1999	100.0	70.0	13.7	10.8	5.5	80.1	52.4	12.5	9.8	5.4	19.9	17.6	1.2	1.0	<0.1
2000	100.0	69.3	14.4	10.9	5.4	79.8	51.4	13.2	10.0	5.2	20.2	17.8	1.2	0.9	0.2
2001	100.0	68.7	14.1	11.5	5.7	79.8	51.0	12.8	10.5	5.5	20.2	17.7	1.3	1.1	0.2

Note: Data for Maui include Lana'i and Moloka'i.

Note: Percentages calculated using the Total as the denominator for all calculations.