

HIGH SCHOOL BACKGROUND OF FIRST-TIME STUDENTS

UNIVERSITY OF HAWAI'I

FALL 2005

Institutional Research Office

University of Hawai'i

June 2006

File Reference: Management and Planning Support Folder, Students

Reports available online at: <http://www.hawaii.edu/iro/maps.htm>

HIGH SCHOOL BACKGROUND OF FIRST-TIME STUDENTS UNIVERSITY OF HAWAII, FALL 2005

Total first-time student enrollment for the University of Hawai'i system measured 7,562 for Fall 2005, a 3.9% increase over Fall 2004 (Table 1 and Figure 1). Enrollment of first-time students from Hawai'i high schools measured 5,472, a 5.1% increase from Fall 2004 (Table 1A). Enrollment of Hawai'i public high school graduates measured 4,586, while enrollment of Hawai'i private high school graduates measured 886. Both figures represent moderate increases from the previous fall semester. Enrollment of students from the U.S. mainland measured 1,150, while 423 students came from foreign countries.

The going rate of Hawai'i recent high school graduates (those who completed high school within the previous academic year) into the University of Hawai'i system measured 33.0% in Fall 2005, an increase of 1.3 percentage points from Fall 2004 (Table 4 & Figure 5). The going rate of public high school graduates measured 33.6%, while the going rate of private high school graduates measured 30.3%.

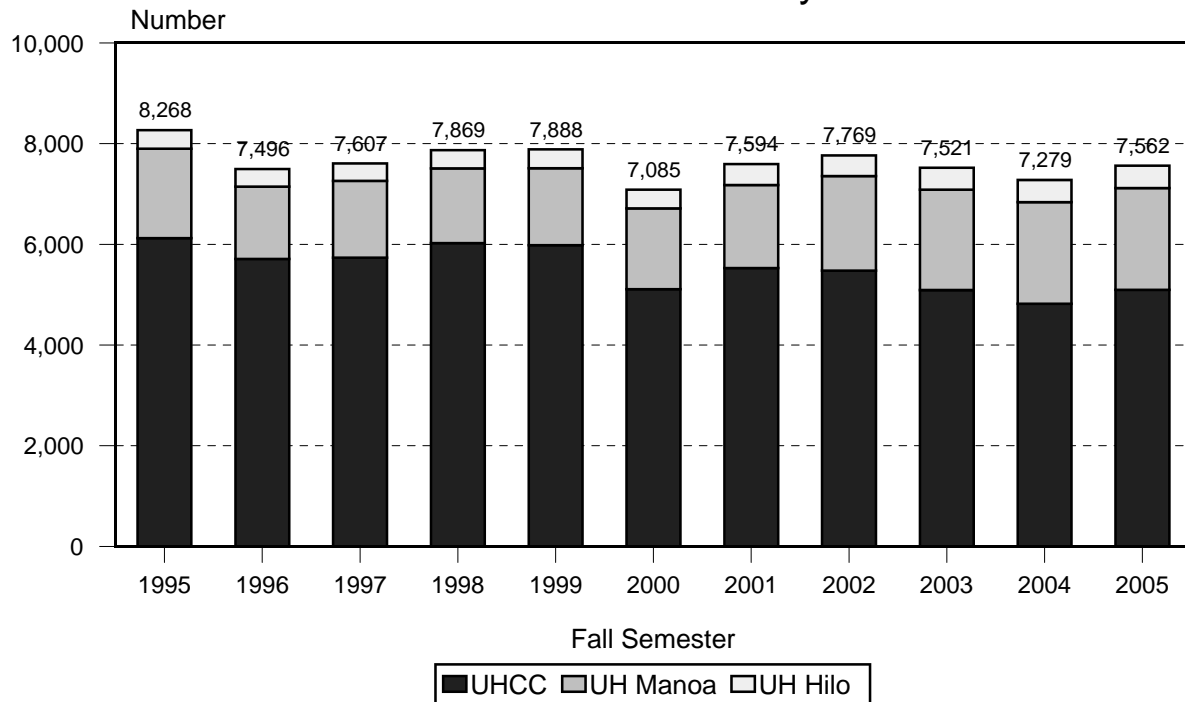
In Fall 2002, the UH Community College campuses migrated to a new student registration system. UH Mānoa and UH Hilo migrated to the new system in Fall 2003. Subsequent to this migration, there was a substantial increase in records of first-time freshmen with invalid data on high school of graduation (Table 1A). The reader is advised to exercise caution when comparing data from before and after the migration. In this report, Fall 2002 and Fall 2003 data, as shown in Table 1A, have been adjusted using information from Datamart / ODS and may differ from numbers published previously.

Other high school background highlights:

- The number of high school graduates for the State of Hawai'i in June 2005 measured 13,379, a 1.3% increase from June 2004 (Table 4 & Figure 2). Overall the number of high school graduates has grown since the mid-1990s. The number of high school graduates in June 2005 was about 1,000 more than in June 1994. WICHE has forecast further increase through 2008.
- While the number of Hawai'i high school graduates has been increasing in recent years, the going rates of those graduates into the UH campuses have been declining (Table 4 and Figure 5). The total UH system going rate declined from 39.3% in Fall 1994 to a low of 31.7% in Fall 2004. The going rate averaged 42.3% in the 1970s, 36.1% in the 1980s, and 37.1% in the 1990s. Thus far in the current decade, the going rate has averaged 32.4%.
- First-Time students from the U.S. mainland have increased in recent years, from 11.4% of the total in Fall 2000 to 15.2% in Fall 2005 (Figure 4). Although the overwhelming majority of first-time students are from Hawai'i (72.4%), first-time freshmen from outside the state account for over 20% of the total for the UH system, over 30% for UH Mānoa and over 39% for UH Hilo (Table 1).
- In June 2005, 12 Hawai'i Public Charter schools reported a total of 152 high school graduates (Table 3 and Appendix 1). Of these graduates, 37 enrolled at UH campuses, a collective going rate of 24.3%.

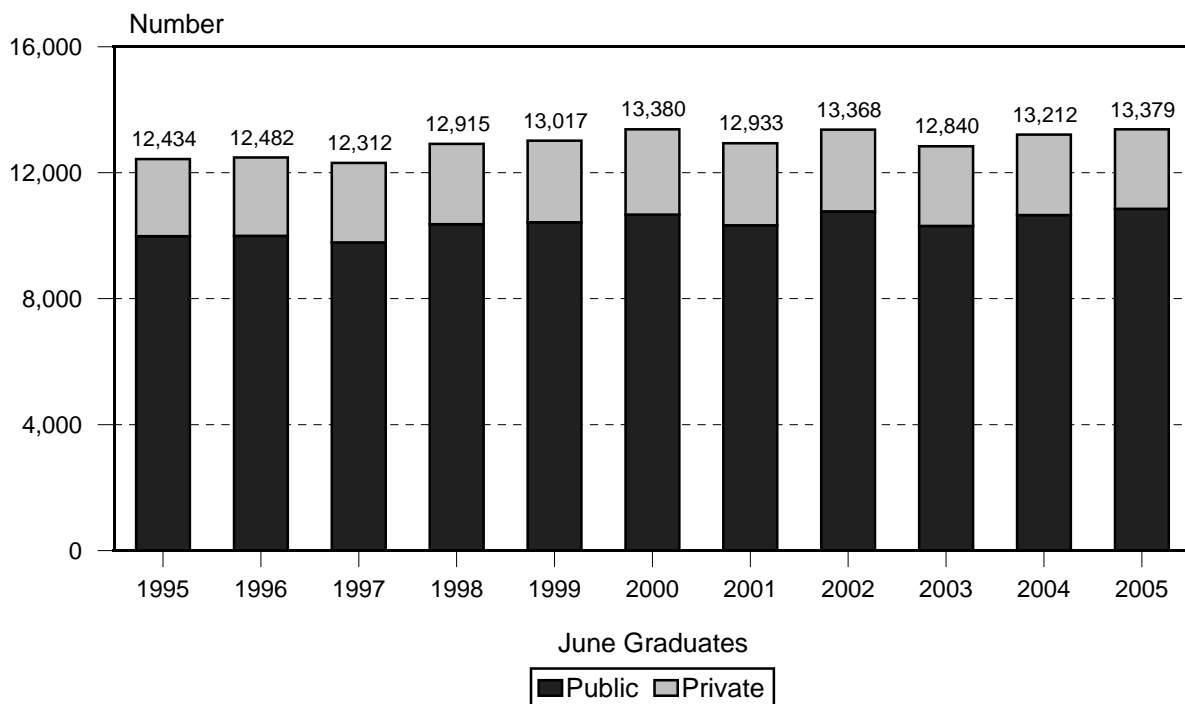
First-Time Students at the University of Hawai'i

Figure 1
Total First-Time Students by UH Unit



Note: UH-West O'ahu does not enroll first-time students at present.

Figure 2
Hawai'i State High School Graduates
By Public and Private High School



First-Time Students at the University of Hawai'i

Figure 3
First-Time Students, Recent High School Graduates
University of Hawai'i System

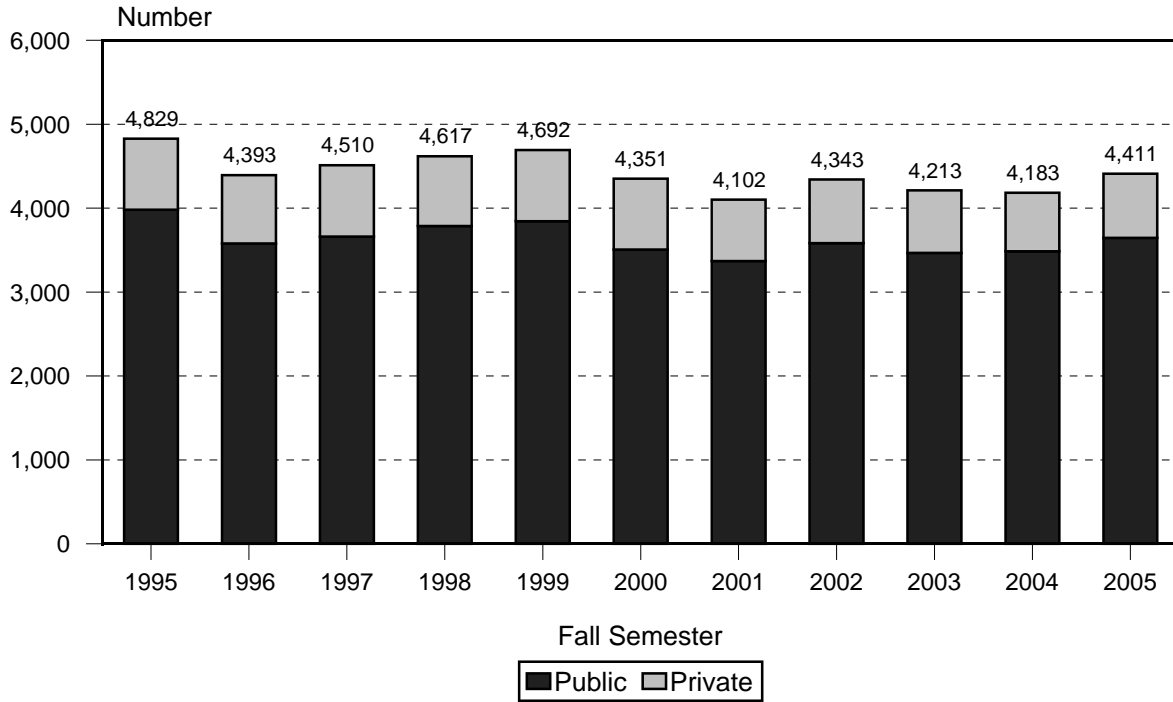
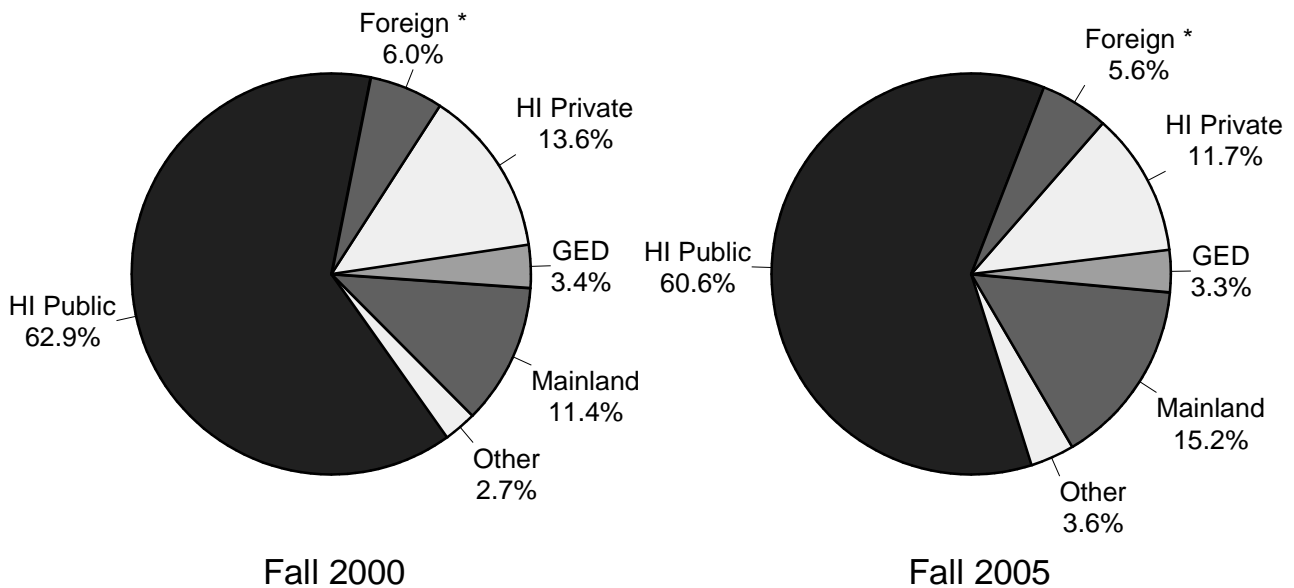


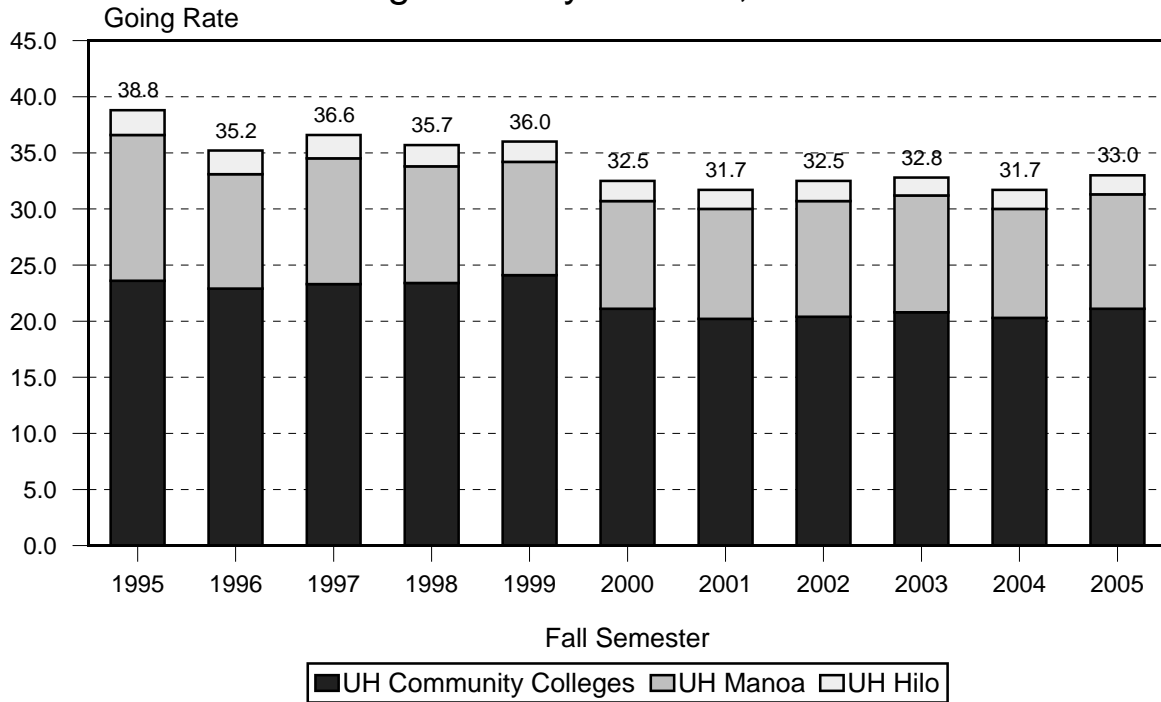
Figure 4
UH First-Time Students
By Geographic Location of High School



* Includes U.S. Territorial Possessions and Commonwealth states.

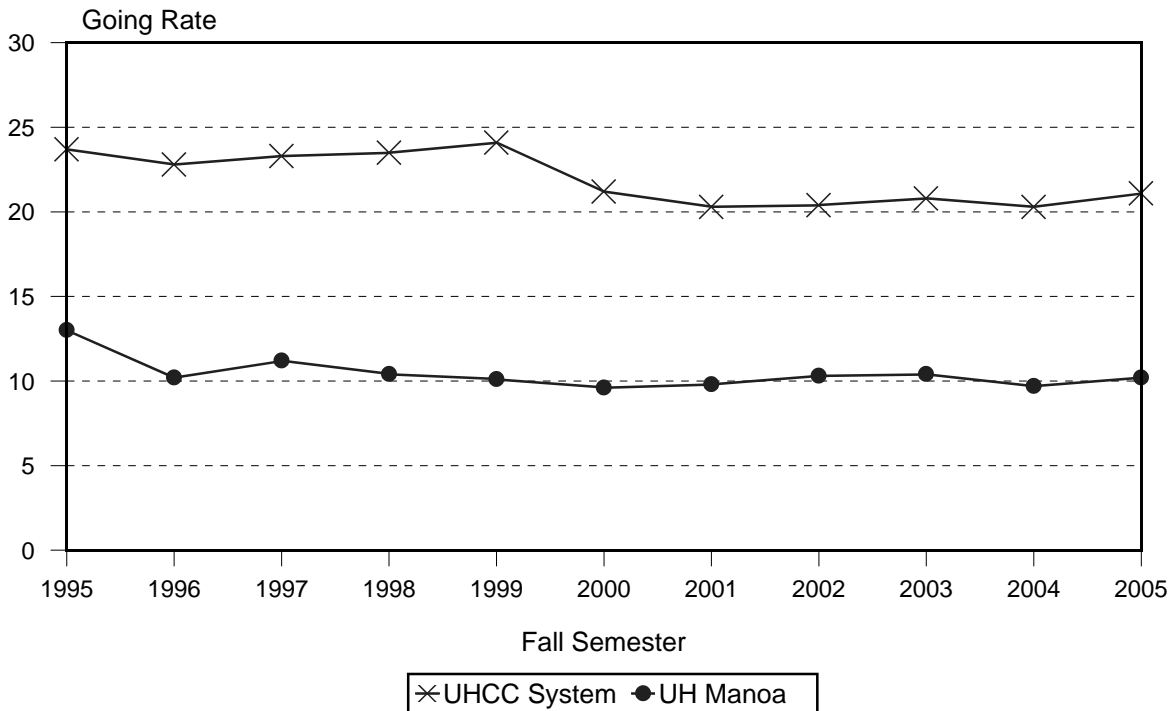
Going Rates Into the University of Hawai'i

Figure 5
Going Rates by UH Unit, Historical



Note: Bars stack to show UH system going rate.

Figure 6
Total Going Rates - Historical
UHCC System and UH Manoa



Going Rates Into the University of Hawai'i

Figure 7
Total Going Rates - Historical
UH Hilo and Hawai'i CC

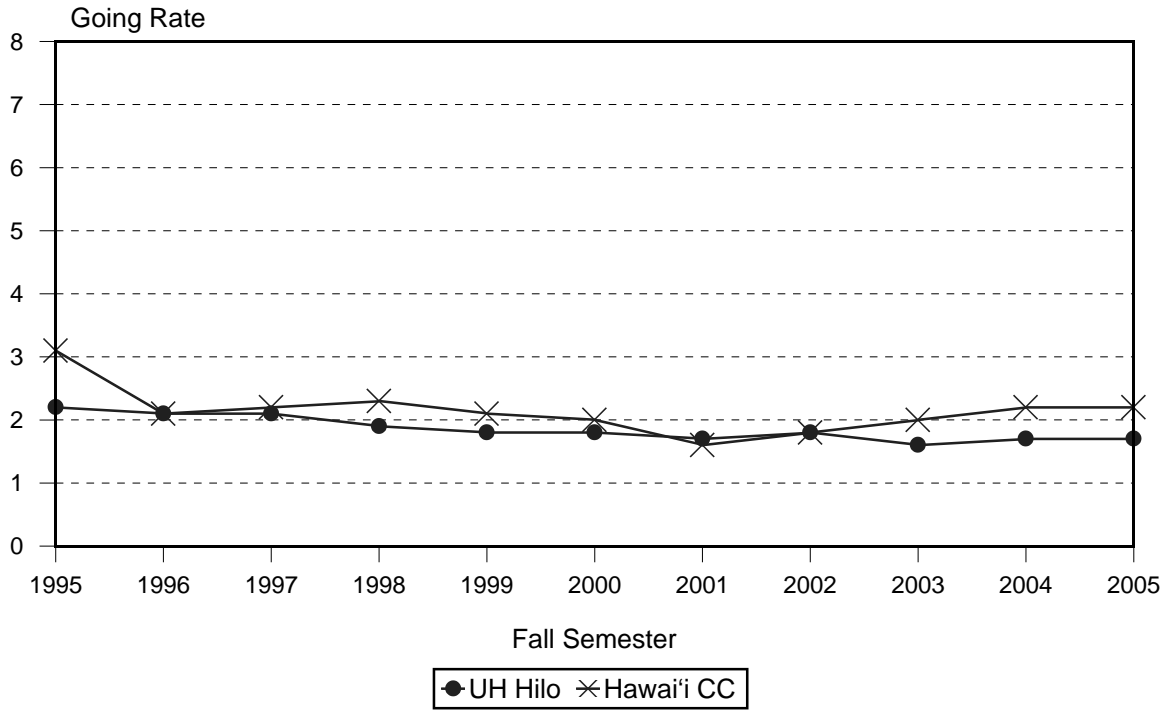
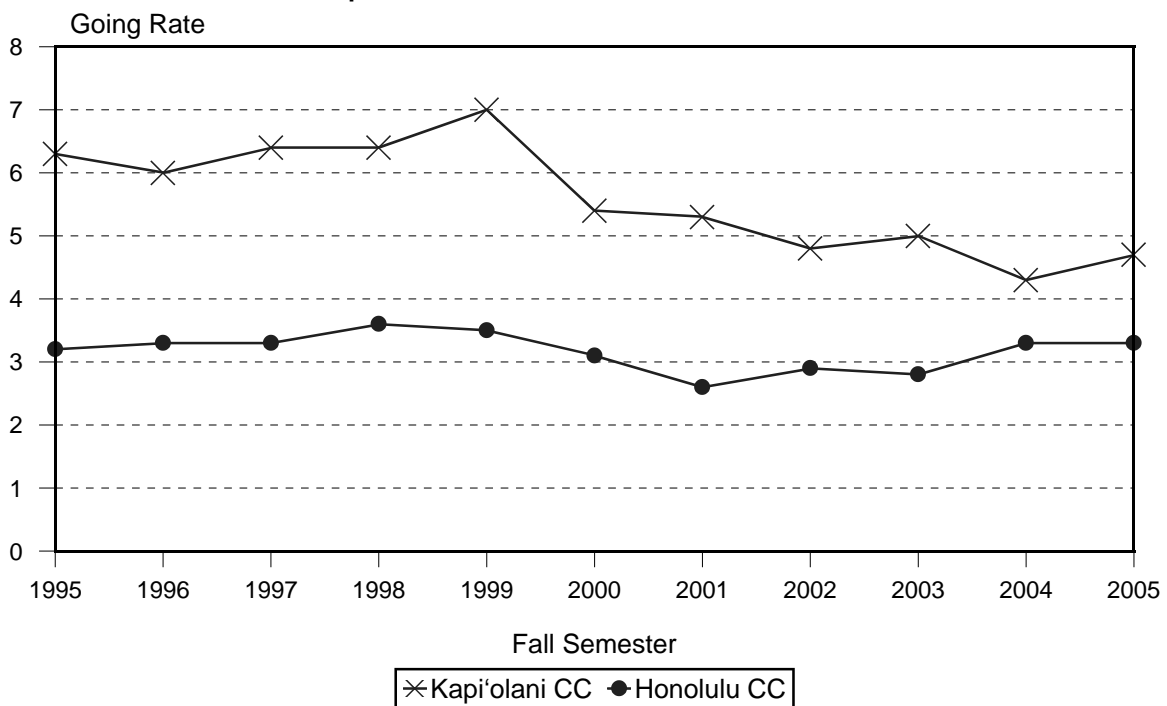


Figure 8
Total Going Rates - Historical
Kapi'olani CC and Honolulu CC



Going Rates Into the University of Hawai'i

Figure 9 Total Going Rates - Historical Maui CC & Kaua'i CC

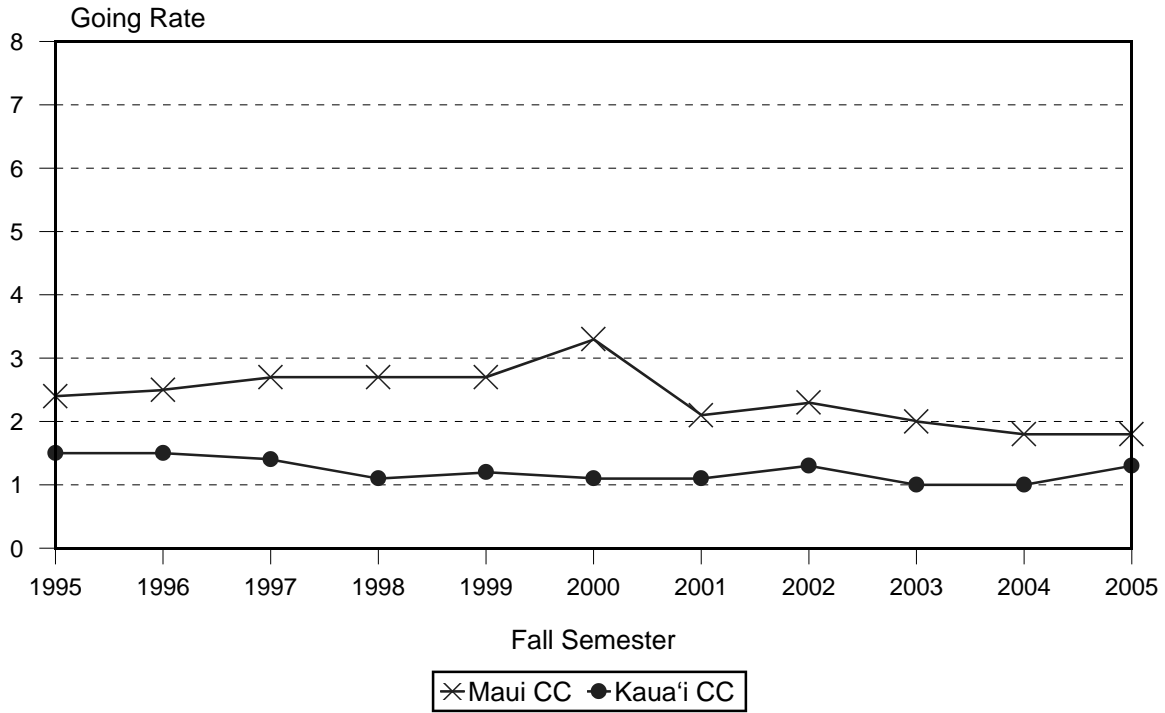


Figure 10 Total Going Rates - Historical Leeward CC and Windward CC

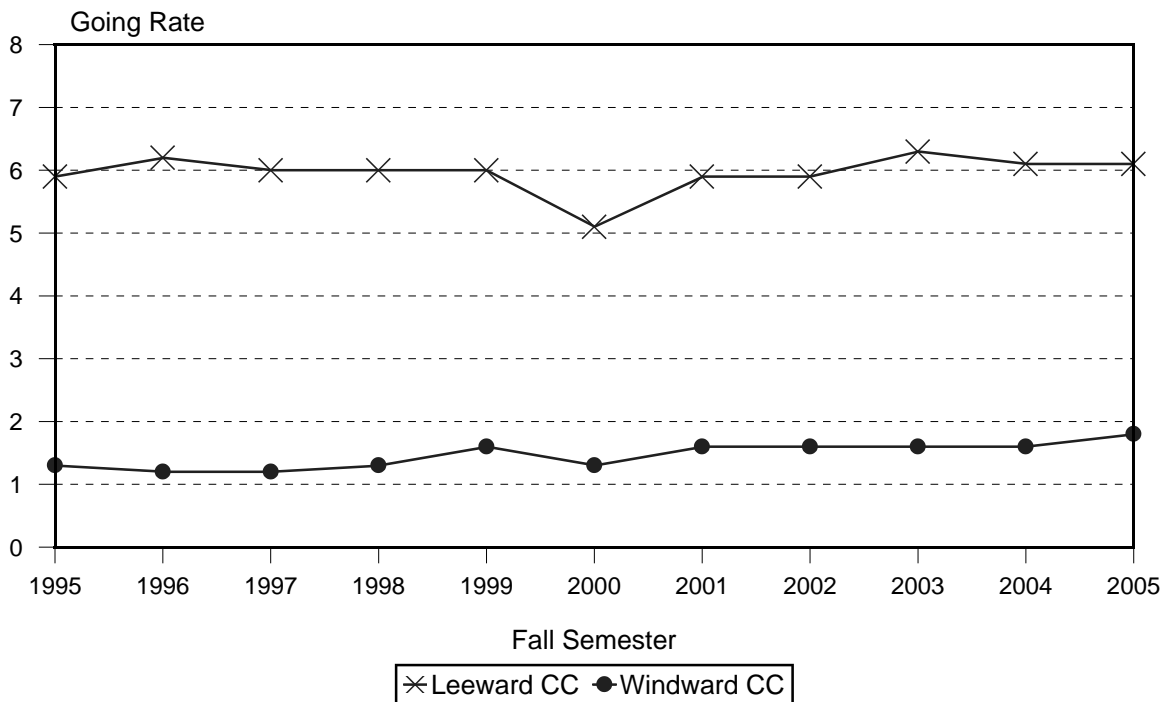


TABLE 1
DISTRIBUTION OF FIRST-TIME STUDENTS BY GEOGRAPHIC LOCATION OF HIGH SCHOOL
UNIVERSITY OF HAWAII, BY CAMPUS
FALL 2005

GEOGRAPHIC LOCATION OF HIGH SCHOOL	TOTAL No. V%		UH MANOA 1/ No. V%		UH HILO 1/ No. V%		UH COMMUNITY COLLEGES 2/															
							Subtotal		Hawaii		Honolulu		Kapi'olani		Kaua'i		Leeward		Maui		Windward	
							No.	V%	No.	V%	No.	V%	No.	V%	No.	V%	No.	V%	No.	V%	No.	V%
TOTAL	7,562	100.0	2,021	100.0	443	100.0	5,098	100.0	519	100.0	899	100.0	1,133	100.0	295	100.0	1,238	100.0	635	100.0	379	100.0
HAWAII STATE	5,472	72.4	1,390	68.8	263	59.4	3,819	74.9	407	78.4	676	75.2	773	68.2	212	71.9	1,033	83.4	403	63.5	315	83.1
Public	4,586	60.6	963	47.6	206	46.5	3,417	67.0	389	75.0	627	69.7	636	56.1	203	68.8	945	76.3	368	58.0	249	65.7
O'ahu, Regular	3,135	41.5	760	37.6	17	3.8	2,358	46.3	17	3.3	585	65.1	572	50.5	6	2.0	921	74.4	13	2.0	244	64.4
Honolulu	1,000	13.2	311	15.4	2	0.5	687	13.5	4	0.8	250	27.8	382	33.7	3	1.0	34	2.7	4	0.6	10	2.6
Leeward	1,706	22.6	376	18.6	11	2.5	1,319	25.9	12	2.3	277	30.8	142	12.5	1	0.3	866	70.0	5	0.8	16	4.2
Windward	429	5.7	73	3.6	4	0.9	352	6.9	1	0.2	58	6.5	48	4.2	2	0.7	21	1.7	4	0.6	218	57.5
O'ahu, Special	3	<0.1					3	0.1					2	0.2							1	0.3
Hawaii	662	8.8	75	3.7	159	35.9	428	8.4	363	69.9	16	1.8	29	2.6			8	0.6	10	1.6	2	0.5
Kaua'i	285	3.8	46	2.3	5	1.1	234	4.6	5	1.0	14	1.6	14	1.2	195	66.1	4	0.3	1	0.2	1	0.3
Maui County	501	6.6	82	4.1	25	5.6	394	7.7	4	0.8	12	1.3	19	1.7	2	0.7	12	1.0	344	54.2	1	0.3
Lanai	17	0.2	3	0.1			14	0.3			1	0.1	2	0.2			2	0.2	9	1.4		
Maui	440	5.8	74	3.7	18	4.1	348	6.8	3	0.6	10	1.1	15	1.3	2	0.7	7	0.6	310	48.8	1	0.3
Moloka'i	44	0.6	5	0.2	7	1.6	32	0.6	1	0.2	1	0.1	2	0.2			3	0.2	25	3.9		
Private	886	11.7	427	21.1	57	12.9	402	7.9	18	3.5	49	5.5	137	12.1	9	3.1	88	7.1	35	5.5	66	17.4
O'ahu	802	10.6	411	20.3	35	7.9	356	7.0	7	1.3	48	5.3	132	11.7	4	1.4	86	6.9	13	2.0	66	17.4
Hawaii	47	0.6	9	0.4	19	4.3	19	0.4	11	2.1	1	0.1	5	0.4					2	0.3		
Kaua'i	10	0.1	3	0.1			7	0.1							5	1.7	1	0.1	1	0.2		
Maui	27	0.4	4	0.2	3	0.7	20	0.4									1	0.1	19	3.0		
OTHER THAN HAWAII	1,573	20.8	619	30.6	173	39.1	781	15.3	76	14.6	131	14.6	264	23.3	55	18.6	119	9.6	105	16.5	31	8.2
U.S. Mainland 3/	1,150	15.2	529	26.2	132	29.8	489	9.6	51	9.8	90	10.0	122	10.8	45	15.3	86	6.9	67	10.6	28	7.4
U.S. Related Areas 4/	97	1.3	30	1.5	18	4.1	49	1.0	1	0.2	13	1.4	21	1.9			9	0.7	4	0.6	1	0.3
Foreign Countries	326	4.3	60	3.0	23	5.2	243	4.8	24	4.6	28	3.1	121	10.7	10	3.4	24	1.9	34	5.4	2	0.5
OTHER SPECIAL	352	4.7	9	0.4	7	1.6	336	6.6	32	6.2	70	7.8	73	6.4	18	6.1	73	5.9	38	6.0	32	8.4
GED 5/	247	3.3	2	0.1	5	1.1	240	4.7	24	4.6	49	5.5	46	4.1	17	5.8	47	3.8	33	5.2	24	6.3
Home Schooler	31	0.4	3	0.1			28	0.5	2	0.4	5	0.6	9	0.8	1	0.3	7	0.6	1	0.2	3	0.8
Not High School Grad	47	0.6	4	0.2			43	0.8	4	0.8	5	0.6	17	1.5			13	1.1	1	0.2	3	0.8
Youth Challenge Program ..	20	0.3					20	0.4			11	1.2					6	0.5	2	0.3	1	0.3
Other Hawaii	7	0.1			2	0.5	5	0.1	2	0.4			1	0.1					1	0.2	1	0.3
NO DATA 6/	165	2.2	3	0.1			162	3.2	4	0.8	22	2.4	23	2.0	10	3.4	13	1.1	89	14.0	1	0.3

1/ Entering freshmen only. Excludes records with invalid ed level - major - degree code combinations.

2/ Includes all regular first-time students; excludes specials (early admits and concurrents).

3/ Includes American military bases overseas.

4/ Includes U.S. Possessions, Commonwealths and republics within the Compact of Free Association.

5/ Students who earned high school diplomas through completion of the General Education Development (GED) examination.

6/ In Fall 2002, the UH Community Colleges migrated to a new student registration system. UH Manoa and UH Hilo migrated in Fall 2003.

Subsequently, there was a large increase in records with invalid data on high school code.

TABLE 1A
DISTRIBUTION OF FIRST-TIME STUDENTS
BY GEOGRAPHIC LOCATION OF HIGH SCHOOL
UNIVERSITY OF HAWAI'I
FALL 2001 TO FALL 2005

GEOGRAPHIC LOCATION OF HIGH SCHOOL	Fall 2001		Fall 2002		Fall 2003		Fall 2004		Fall 2005	
	No.	V%	No.	V%	No.	V%	No.	V%	No.	V%
TOTAL	7,594	100.0	7,769	100.0	7,521	100.0	7,279	100.0	7,562	100.0
HAWAI'I STATE	5,574	73.4	5,748	74.0	5,377	71.5	5,208	71.5	5,472	72.4
Public	4,664	61.4	4,853	62.5	4,536	60.3	4,418	60.7	4,586	60.6
O'ahu, Regular	3,121	41.1	3,193	41.1	3,100	41.2	2,957	40.6	3,135	41.5
Honolulu	1,045	13.8	1,087	14.0	1,024	13.6	927	12.7	1,000	13.2
Leeward	1,573	20.7	1,638	21.1	1,629	21.7	1,619	22.2	1,706	22.6
Windward	503	6.6	468	6.0	447	5.9	411	5.6	429	5.7
O'ahu, Special	6	0.1	3	<0.1	3	<0.1	2	<0.1	3	<0.1
Hawai'i	647	8.5	696	9.0	699	9.3	718	9.9	662	8.8
Kaua'i	286	3.8	333	4.3	249	3.3	251	3.4	285	3.8
Maui County	604	8.0	628	8.1	485	6.4	490	6.7	501	6.6
Lanai	20	0.3	18	0.2	14	0.2	17	0.2	17	0.2
Maui	527	6.9	565	7.3	449	6.0	432	5.9	440	5.8
Moloka'i	57	0.8	45	0.6	22	0.3	41	0.6	44	0.6
Private	910	12.0	895	11.5	841	11.2	790	10.9	886	11.7
O'ahu	839	11.0	813	10.5	756	10.1	714	9.8	802	10.6
Hawai'i	36	0.5	38	0.5	47	0.6	44	0.6	47	0.6
Kaua'i	9	0.1	11	0.1	7	0.1	9	0.1	10	0.1
Maui	26	0.3	33	0.4	31	0.4	23	0.3	27	0.4
OTHER THAN HAWAI'I	1,517	20.0	1,431	18.4	1,554	20.7	1,478	20.3	1,573	20.8
U.S. Mainland	1,062	14.0	1,023	13.2	1,116	14.8	1,128	15.5	1,150	15.2
U.S. Related Areas 1/	60	0.8	53	0.7	79	1.1	82	1.1	97	1.3
Foreign Countries	395	5.2	355	4.6	359	4.8	268	3.7	326	4.3
OTHER SPECIAL	483	6.4	406	5.2	362	4.8	337	4.6	352	4.7
GED	323	4.3	278	3.6	281	3.7	245	3.4	247	3.3
Defunct High School			1	<0.1	1	<0.1				
Hawai'i State (Grad Div)	12	0.2					5	0.1		
Home Schooler	2	<0.1	17	0.2	23	0.3	17	0.2	31	0.4
Not High School Grad	145	1.9	105	1.4	48	0.6	62	0.9	47	0.6
Youth Challenge Program ..	1	<0.1	5	0.1	9	0.1	8	0.1	20	0.3
Other Hawai'i									7	0.1
NO DATA 2/	20	0.3	184	2.4	228	3.0	256	3.5	165	2.2

1/ Includes U.S. Possessions, Commonwealths and republics within the Compact of Free Association.

2/ In Fall 2002, the UH Community Colleges migrated to a new student registration system. UH Manoa and UH Hilo migrated in Fall 2003. Subsequently, there was a large increase in records with invalid data on high school code plus a loss of detail on students from U.S. possessions, foreign countries and other special areas.

Note: Data for Fall 2002 and Fall 2003 have been corrected using information from Datamart / ODS.

TABLE 2
 FIRST-TIME STUDENTS FROM HAWAI'I HIGH SCHOOLS
 BY YEAR OF HIGH SCHOOL GRADUATION
 UNIVERSITY OF HAWAI'I, BY CAMPUS
 FALL 2005

UH CAMPUS ENTERED	TOTAL No. H%		YEAR OF HIGH SCHOOL GRADUATION													
			2005 No. H%		2004 No. H%		2003 No. H%		2002 No. H%		2001 No. H%		Before 2001 No. H%		No Data No. H%	
TOTAL	5,472	100.0	4,411	80.6	368	6.7	121	2.2	69	1.3	43	0.8	360	6.6	100	1.8
UH at Manoa 1/	1,390	100.0	1,358	97.7	11	0.8	4	0.3	1	0.1	2	0.1	7	0.5	7	0.5
UH at Hilo 1/	263	100.0	227	86.3	14	5.3			1	0.4					21	8.0
Community Colleges 2/ ...	3,819	100.0	2,826	74.0	343	9.0	117	3.1	67	1.8	41	1.1	353	9.2	72	1.9
Hawai'i CC 3/	407	100.0	293	72.0	28	6.9	21	5.2	9	2.2	4	1.0	46	11.3	6	1.5
Honolulu CC	676	100.0	437	64.6	84	12.4	24	3.6	17	2.5	15	2.2	79	11.7	20	3.0
Kapi'olani CC	773	100.0	629	81.4	51	6.6	15	1.9	9	1.2	3	0.4	53	6.9	13	1.7
Kaua'i CC	212	100.0	174	82.1	14	6.6	3	1.4	4	1.9			14	6.6	3	1.4
Leeward CC	1,033	100.0	812	78.6	96	9.3	28	2.7	16	1.5	10	1.0	59	5.7	12	1.2
Maui CC	403	100.0	241	59.8	44	10.9	17	4.2	9	2.2	7	1.7	69	17.1	16	4.0
Windard CC	315	100.0	240	76.2	26	8.3	9	2.9	3	1.0	2	0.6	33	10.5	2	0.6

1/ Entering freshmen only. Excludes records with invalid ed level - major - degree code combinations.

2/ Includes all regular first-time students; excludes specials (early admits and concurrents).

3/ Data on year of high school graduation corrected for 198 records at Hawai'i CC.

SOURCE: IRO Base Table, Census Fall 2005.

TABLE 3 (cont.)

DISTRICT AND SCHOOL	JUNE 2005 HIGH SCHOOL GRADS 1/	TOTAL UH SYSTEM Going No. Rate		UH at MANOA 2/ Going No. Rate		UH at HILO 2/ Going No. Rate		UH COMMUNITY COLLEGES 3/																
								SUBTOTAL		Hawai'i		Honolulu		Kapi'olani		Kaua'i		Leeward		Maui		Windward		
								No.	Going Rate	No.	Going Rate	No.	Going Rate	No.	Going Rate	No.	Going Rate	No.	Going Rate	No.	Going Rate	No.	Going Rate	
Neighbor Islands	3,889	1,088	28.0	191	4.9	161	4.1	736	18.9	270	6.9	25	0.6	43	1.1	165	4.2	13	0.3	220	5.7			
Hawai'i	1,705	494	29.0	66	3.9	133	7.8	295	17.3	265	15.5	9	0.5	14	0.8			4	0.2	3	0.2			
Hawai'i Acad of Arts & Sci Charter	20	2	10.0					2	10.0	1	5.0			1	5.0									
Hilo	323	112	34.7	9	2.8	31	9.6	72	22.3	70	21.7			2	0.6									
Honoka'a	161	26	16.1	1	0.6	3	1.9	22	13.7	19	11.8	1	0.6	1	0.6					1	0.6			
Kanu O Ka Aina Charter	4																							
Ka'u	62	13	21.0	1	1.6	4	6.5	8	12.9	8	12.9													
Ke Ana La'ahana Charter	10																							
Kea'au	168	56	33.3	5	3.0	15	8.9	36	21.4	34	20.2							1	0.6	1	0.6			
Kealakehe	265	49	18.5	15	5.7	12	4.5	22	8.3	17	6.4	1	0.4	4	1.5									
Kohala	65	13	20.0	1	1.5	3	4.6	9	13.8	8	12.3			1	1.5									
Kona Waena	168	41	24.4	10	6.0	6	3.6	25	14.9	19	11.3	4	2.4	2	1.2									
Laupahoehoe	22	5	22.7			2	9.1	3	13.6	3	13.6													
Pahoa	133	32	24.1	4	3.0	17	12.8	11	8.3	10	7.5	1	0.8											
Waiakea	287	144	50.2	20	7.0	40	13.9	84	29.3	75	26.1	2	0.7	3	1.0			3	1.0	1	0.3			
Waters of Life Charter	8																							
West Hawai'i Explorations Charter	9	1	11.1					1	11.1	1	11.1													
Maui County	1,482	355	24.0	82	5.5	23	1.6	250	16.9	2	0.1	8	0.5	17	1.1			7	0.5	216	14.6			
Baldwin	408	88	21.6	17	4.2	4	1.0	67	16.4			1	0.2	4	1.0			1	0.2	61	15.0			
Hana	32	4	12.5			1	3.1	3	9.4			2	6.3							1	3.1			
Kihei Public Charter	10																							
King Kekaulike	317	98	30.9	28	8.8	8	2.5	62	19.6	1	0.3	2	0.6					2	0.6	57	18.0			
Lahaina Luna	242	50	20.7	12	5.0	2	0.8	36	14.9					5	2.1			1	0.4	30	12.4			
Lana'i	44	11	25.0	3	6.8			8	18.2			1	2.3	2	4.5					5	11.4			
Maui	326	76	23.3	17	5.2	1	0.3	58	17.8			1	0.3	4	1.2			1	0.3	52	16.0			
Moloka'i	103	28	27.2	5	4.9	7	6.8	16	15.5	1	1.0	1	1.0	2	1.9			2	1.9	10	9.7			
Kaua'i	702	239	34.0	43	6.1	5	0.7	191	27.2	3	0.4	8	1.1	12	1.7	165	23.5	2	0.3	1	0.1			
Kanuikapono Charter School 7/	2	1	50.0					1	50.0						1	50.0								
Kapa'a	218	75	34.4	13	6.0	1	0.5	61	28.0			1	0.5	3	1.4	57	26.1							
Kaua'i	288	99	34.4	21	7.3	3	1.0	75	26.0	3	1.0	3	1.0	8	2.8	60	20.8	1	0.3					
Niihau	6																							
Kula Aupuni Ni'ihau A Kahelelani 8/ ..	3	1	33.3					1	33.3									1	33.3					
Waimea	185	63	34.1	9	4.9	1	0.5	53	28.6			4	2.2	1	0.5	47	25.4			1	0.5			
Unknown / Miscoded		1	NA					1	NA														1	NA
PRIVATE SCHOOLS	2,527	765	30.3	400	15.8	48	1.9	317	12.5	14	0.6	29	1.1	112	4.4	8	0.3	75	3.0	19	0.8	60	2.4	
O'ahu	2,235	700	31.3	384	17.2	30	1.3	286	12.8	4	0.2	29	1.3	109	4.9	3	0.1	72	3.2	9	0.4	60	2.7	
Academy of the Pacific	41	14	34.1	3	7.3			11	26.8			1	2.4	6	14.6			1	2.4			3	7.3	
ASSETS School	21	6	28.6	3	14.3			3	14.3					2	9.5			1	4.8					
Christian Academy	8	2	25.0					2	25.0			1	12.5					1	12.5					
Damien	94	47	50.0	13	13.8	2	2.1	32	34.0			4	4.3	6	6.4			18	19.1			4	4.3	
Friendship Christian	2																							
Hanalani	18	6	33.3	4	22.2			2	11.1					1	5.6			1	5.6					
Hawai'i Baptist Academy	101	50	49.5	40	39.6	1	1.0	9	8.9			1	1.0	5	5.0			3	3.0					
Hawaiian Mission Academy	41	9	22.0			2	4.9	7	17.1			1	2.4	5	12.2			1	2.4					
Ho'ala School	6	1	16.7			1	16.7																	
Honolulu Waldorf School	19	3	15.8	3	15.8																			
Iolani	223	27	12.1	23	10.3			4	1.8			2	0.9	1	0.4			1	0.4					
Kailua Christian Academy	3	1	33.3					1	33.3													1	33.3	
Kamehameha	443	201	45.4	97	21.9	16	3.6	88	19.9	3	0.7	3	0.7	21	4.7	2	0.5	28	6.3	9	2.0	22	5.0	
Koolau Baptist	12	6	50.0					6	50.0													6	50.0	

TABLE 3 (cont.)

DISTRICT AND SCHOOL	JUNE 2005 HIGH SCHOOL GRADS 1/	TOTAL		UH at		UH at		UH COMMUNITY COLLEGES 3/															
		UH SYSTEM Going No. Rate		MANOA 2/ Going No. Rate		HILO 2/ Going No. Rate		SUBTOTAL Going No. Rate		Hawai'i Going No. Rate		Honolulu Going No. Rate		Kapi'olani Going No. Rate		Kaua'i Going No. Rate		Leeward Going No. Rate		Maui Going No. Rate		Windward Going No. Rate	
		No.	Rate	No.	Rate	No.	Rate	No.	Rate	No.	Rate	No.	Rate	No.	Rate	No.	Rate	No.	Rate	No.	Rate	No.	Rate
Kamehameha	443	201	45.4	97	21.9	16	3.6	88	19.9	3	0.7	3	0.7	21	4.7	2	0.5	28	6.3	9	2.0	22	5.0
Koolau Baptist	12	6	50.0					6	50.0												6	50.0	
La Pietra (Hawai'i School for Girls)	27	11	40.7	10	37.0			1	3.7			1	3.7										
Lanakila Baptist	23	6	26.1	3	13.0			3	13.0			1	4.3					2	8.7				
Lutheran High Sch Hawai'i	23	18	78.3	5	21.7			13	56.5			1	4.3	9	39.1			3	13.0				
Maile Bible	7	3	42.9					3	42.9									3	42.9				
Maryknoll	141	54	38.3	43	30.5			11	7.8					8	5.7			1	0.7			2	1.4
Mid-Pacific Institute	184	57	31.0	44	23.9	2	1.1	11	6.0					11	6.0								
Punahou	422	40	9.5	29	6.9	2	0.5	9	2.1			1	0.2	4	0.9							4	0.9
Redemption Academy	13	7	53.8					7	53.8			2	15.4									5	38.5
Sacred Hearts Academy	119	39	32.8	22	18.5	1	0.8	16	13.4			1	0.8	7	5.9			4	3.4			4	3.4
Saint Andrew's Priory	28	7	25.0	6	21.4	1	3.6																
Saint Francis	76	23	30.3	10	13.2			13	17.1	1	1.3	1	1.3	6	7.9	1	1.3	1	1.3			3	3.9
Saint Louis	117	55	47.0	24	20.5	1	0.9	30	25.6			7	6.0	15	12.8			3	2.6			5	4.3
Word of Life 6/	23	7	30.4	2	8.7	1	4.3	4	17.4			1	4.3	2	8.7							1	4.3
Hawai'i	150	37	24.7	9	6.0	15	10.0	13	8.7	10	6.7			3	2.0								
Christian Liberty	7	2	28.6					2	28.6														
Haili Christian School 9/	4	3	75.0			1	25.0	2	50.0	2	50.0												
Hawai'i Prep Academy	76	8	10.5	7	9.2			1	1.3					1	1.3								
Makua Lani Christian	10	4	40.0			1	10.0	3	30.0	3	30.0												
Parker	16	4	25.0	1	6.3	3	18.8																
Saint Joseph	37	16	43.2	1	2.7	8	21.6	7	18.9	5	13.5			2	5.4								
Maui County	109	16	14.7	4	3.7	3	2.8	9	8.3											9	8.3		
Ka'ahumanu Hou Christian	3	1	33.3					1	33.3											1	33.3		
Molokai Christian Acad	5																						
Saint Anthony	38	12	31.6	2	5.3	2	5.3	8	21.1											8	21.1		
Seabury Hall	63	3	4.8	2	3.2	1	1.6																
Kaua'i	33	10	30.3	3	9.1			7	21.2					5	15.2			1	3.0	1	3.0		
Island School	20	5	25.0	1	5.0			4	20.0					2	10.0			1	5.0	1	5.0		
Kahili Adventist School	3	3	100.0					3	100.0					3	100.0								
Kula High School	10	2	20.0	2	20.0																		
Unknown / Miscoded		2	NA					2	NA									2	NA				

1/ Excludes home schoolers and students who earned high school diplomas through the General Education Development (GED) examination.

2/ Entering freshmen only.

3/ Includes all regular first-time students; excludes specials (early admits and concurrents).

4/ University Lab School became the Education Lab Public Charter School in August 2002.

5/ Formerly called Hawai'i E-Charter.

6/ First graduating class in June 2004.

7/ Formerly called Ipu Ha'a Academy of Natural Sciences. First graduates reported June 2005.

8/ Formerly called Niihau School of Kekaha. First graduates reported for June 2003.

9/ First graduating class in June 2005.

Note: The "going rate" is the percentage of high school graduates from the State of Hawai'i entering the University of Hawai'i campuses in the fall semester immediately following graduation from high school.

SOURCES: IRO Base Table, Census Fall 2005; State of Hawai'i Department of Education and administrative offices of private schools.

TABLE 4
 "GOING RATES" OF HAWAII HIGH SCHOOL GRADUATES
 INTO THE UNIVERSITY OF HAWAII SYSTEM 1/
 BY UH CAMPUS AND BY PUBLIC AND PRIVATE HIGH SCHOOLS
 FALL 1995 TO FALL 2005

CAMPUS AND FALL SEMESTER	TOTAL 2/		PUBLIC SCHOOLS		PRIVATE SCHOOLS	
	No.	Going Rate	No.	Going Rate	No.	Going Rate
TOTAL UH						
1995	4,829	38.8	3,982	39.9	847	34.6
1996	4,393	35.2	3,579	35.8	814	32.7
1997	4,510	36.6	3,661	37.4	849	33.6
1998	4,617	35.7	3,787	36.5	830	32.6
1999	4,692	36.0	3,844	36.9	848	32.7
2000	4,351	32.5	3,506	32.9	845	31.2
2001	4,102	31.7	3,369	32.6	733	28.2
2002	4,343	32.5	3,583	33.3	760	29.3
2003	4,213	32.8	3,467	33.6	746	29.5
2004	4,183	31.7	3,487	32.7	696	27.2
2005	4,411	33.0	3,646	33.6	765	30.3
UH at MANOA 3/						
1995	1,616	13.0	1,132	11.3	484	19.8
1996	1,279	10.2	874	8.7	405	16.3
1997	1,379	11.2	957	9.8	422	16.7
1998	1,341	10.4	924	8.9	417	16.4
1999	1,316	10.1	879	8.4	437	16.9
2000	1,278	9.6	826	7.7	452	16.7
2001	1,262	9.8	846	8.2	416	16.0
2002	1,381	10.3	976	9.1	405	15.6
2003	1,333	10.4	899	8.7	434	17.2
2004	1,278	9.7	893	8.4	385	15.1
2005	1,358	10.2	958	8.8	400	15.8
UH at HILO 3/						
1995	271	2.2	227	2.3	44	1.8
1996	263	2.1	209	2.1	54	2.2
1997	257	2.1	213	2.2	44	1.7
1998	239	1.9	199	1.9	40	1.6
1999	237	1.8	198	1.9	39	1.5
2000	235	1.8	202	1.9	33	1.2
2001	216	1.7	185	1.8	31	1.2
2002	235	1.8	195	1.8	40	1.5
2003	206	1.6	183	1.8	23	0.9
2004	219	1.7	180	1.7	39	1.5
2005	227	1.7	179	1.6	48	1.9
COMMUNITY COLLEGES 4/						
1995	2,942	23.7	2,623	26.3	319	13.0
1996	2,851	22.8	2,496	25.0	355	14.3
1997	2,874	23.3	2,491	25.5	383	15.2
1998	3,037	23.5	2,664	25.7	373	14.7
1999	3,139	24.1	2,767	26.5	372	14.4
2000	2,838	21.2	2,478	23.2	360	13.3
2001	2,624	20.3	2,338	22.6	286	11.0
2002	2,727	20.4	2,412	22.4	315	12.1
2003	2,674	20.8	2,385	23.1	289	11.4
2004	2,686	20.3	2,414	22.7	272	10.6
2005	2,826	21.1	2,509	23.1	317	12.5

TABLE 4 (cont.)

CAMPUS AND FALL SEMESTER	TOTAL 2/		PUBLIC SCHOOLS		PRIVATE SCHOOLS	
	No.	Going Rate	No.	Going Rate	No.	Going Rate
Hawai'i CC						
1995	383	3.1	364	3.6	19	0.8
1996	262	2.1	253	2.5	9	0.4
1997	276	2.2	259	2.6	17	0.7
1998	303	2.3	285	2.7	18	0.7
1999	269	2.1	253	2.4	16	0.6
2000	261	2.0	247	2.3	14	0.5
2001	204	1.6	194	1.9	10	0.4
2002	237	1.8	229	2.1	8	0.3
2003	263	2.0	254	2.5	9	0.4
2004	286	2.2	275	2.6	11	0.4
2005	293	2.2	279	2.6	14	0.6
Honolulu CC						
1995	401	3.2	367	3.7	34	1.4
1996	416	3.3	375	3.8	41	1.6
1997	408	3.3	360	3.7	48	1.9
1998	466	3.6	428	4.1	38	1.5
1999	459	3.5	415	4.0	44	1.7
2000	418	3.1	377	3.5	41	1.5
2001	338	2.6	305	3.0	33	1.3
2002	386	2.9	350	3.2	36	1.4
2003	357	2.8	337	3.3	20	0.8
2004	439	3.3	396	3.7	43	1.7
2005	437	3.3	408	3.8	29	1.1
Kapi'olani CC						
1995	781	6.3	642	6.4	139	5.7
1996	752	6.0	605	6.1	147	5.9
1997	794	6.4	611	6.2	183	7.2
1998	828	6.4	661	6.4	167	6.6
1999	914	7.0	738	7.1	176	6.8
2000	725	5.4	581	5.4	144	5.3
2001	686	5.3	571	5.5	115	4.4
2002	640	4.8	518	4.8	122	4.7
2003	643	5.0	503	4.9	140	5.5
2004	574	4.3	464	4.4	110	4.4
2005	629	4.7	517	4.8	112	4.4
Kaua'i CC						
1995	190	1.5	189	1.9	1	<0.1
1996	181	1.5	178	1.8	3	0.1
1997	173	1.4	169	1.7	4	0.2
1998	144	1.1	135	1.3	9	0.4
1999	160	1.2	158	1.5	2	<0.1
2000	148	1.1	145	1.4	3	0.1
2001	145	1.1	137	1.3	8	0.3
2002	169	1.3	166	1.5	3	0.1
2003	127	1.0	123	1.2	4	0.2
2004	131	1.0	124	1.2	7	0.3
2005	174	1.3	166	1.5	8	0.3
Leeward CC						
1995	728	5.9	649	6.5	79	3.2
1996	777	6.2	685	6.9	92	3.7
1997	742	6.0	662	6.8	80	3.2
1998	776	6.0	687	6.6	89	3.5
1999	776	6.0	698	6.7	78	3.0

TABLE 4 (cont.)

CAMPUS AND FALL SEMESTER	TOTAL 2/ No. Going Rate		PUBLIC SCHOOLS No. Going Rate		PRIVATE SCHOOLS No. Going Rate	
	2000	679	5.1	604	5.7	75
2001	767	5.9	698	6.8	69	2.7
2002	785	5.9	710	6.6	75	2.9
2003	811	6.3	746	7.2	65	2.6
2004	803	6.1	743	7.0	60	2.3
2005	812	6.1	737	6.8	75	3.0
Maui CC						
1995	294	2.4	276	2.8	18	0.7
1996	307	2.5	278	2.8	29	1.2
1997	334	2.7	309	3.2	25	1.0
1998	346	2.7	325	3.1	21	0.8
1999	350	2.7	329	3.2	21	0.8
2000	435	3.3	382	3.6	53	2.0
2001	276	2.1	262	2.5	14	0.5
2002	301	2.3	267	2.5	34	1.3
2003	262	2.0	244	2.4	18	0.7
2004	244	1.8	229	2.1	15	0.6
2005	241	1.8	222	2.0	19	0.8
Windward CC						
1995	165	1.3	136	1.4	29	1.2
1996	156	1.2	122	1.2	34	1.4
1997	147	1.2	121	1.2	26	1.0
1998	174	1.3	143	1.4	31	1.2
1999	211	1.6	176	1.7	35	1.4
2000	172	1.3	142	1.3	30	1.1
2001	208	1.6	171	1.7	37	1.4
2002	209	1.6	172	1.6	37	1.4
2003	211	1.6	178	1.7	33	1.3
2004	209	1.6	183	1.7	26	1.0
2005	240	1.8	180	1.7	60	2.4
HAWAII STATE HS GRADUATES						
	No.	H%	No.	H%	No.	H%
1995	12,434	100.0	9,984	80.3	2,450	19.7
1996	12,482	100.0	9,995	80.1	2,487	19.9
1997	12,312	100.0	9,784	79.5	2,528	20.5
1998	12,915	100.0	10,369	80.3	2,546	19.7
1999	13,017	100.0	10,425	80.1	2,592	19.9
2000	13,380	100.0	10,671	79.8	2,709	20.2
2001	12,933	100.0	10,330	79.9	2,603	20.1
2002	13,368	100.0	10,771	80.6	2,597	19.4
2003 5/	12,840	100.0	10,312	80.4	2,528	19.6
2004 5/	13,212	100.0	10,657	80.7	2,555	19.3
2005	13,379	100.0	10,852	81.1	2,527	18.9

1/ The "going rate" is the percentage of high school graduates from the State of Hawai'i entering the University of Hawai'i in the fall semester immediately following graduation from high school.

2/ Excludes home schoolers and students who received high school diplomas via the GED examination .

3/ First-time freshmen only.

4/ Includes all regular first-time students; excludes specials (early admits and concurrents).

5/ High school graduate count revised.

SOURCES: IRO Base Table, Census Fall 2005.

State of Hawai'i Department of Education and administrative offices of private high schools.

TABLE 5
 THE "GOING RATE" OF O'AHU HIGH SCHOOL GRADUATES
 INTO THE UNIVERSITY OF HAWAI'I, BY HIGH SCHOOL DISTRICT 1/
 UNIVERSITY OF HAWAI'I
 FALL 1995 TO FALL 2005

CAMPUS & FALL SEMESTER	TOTAL O'AHU No. Rate		PUBLIC HIGH SCHOOL DISTRICT										PRIVATE HIGH SCHOOLS No. Rate				
			Subtotal Going		Honolulu Going		Central Going		Leeward Going		Windward Going				Special Going		
			No.	Rate	No.	Rate	No.	Rate	No.	Rate	No.	Rate			No.	Rate	
TOTAL UH																	
1995	3,456	39.2	2,678	40.2	1,001	50.7	807	39.9	549	34.1	319	30.3	2	40.0	778	36.2	
1996	3,183	36.2	2,437	36.9	892	46.2	716	36.1	538	33.8	289	26.6	2	25.0	746	34.2	
1997	3,275	37.9	2,503	38.9	863	45.5	755	38.8	543	34.8	340	33.7	2	12.5	772	34.8	
1998	3,359	37.1	2,603	38.2	887	47.4	810	39.1	570	32.4	334	30.1	2	100.0	756	33.8	
1999	3,458	37.9	2,660	39.0	941	47.1	766	39.2	579	33.0	374	33.9			798	34.8	
2000	3,080	33.2	2,307	33.5	790	38.1	655	33.5	537	30.2	323	30.3	2	28.6	773	32.4	
2001	3,028	34.1	2,337	35.4	769	42.1	681	36.2	533	29.7	351	32.1	3	30.0	691	30.4	
2002	3,152	34.3	2,453	35.4	867	42.4	699	35.8	568	31.2	317	29.2	2	12.5	699	30.7	
2003	3,091	34.8	2,412	36.1	794	43.0	722	36.8	565	30.7	329	32.3	2	18.2	679	30.7	
2004	3,064	33.3	2,426	34.8	778	40.6	704	37.0	633	30.7	310	28.5	1	10.0	638	28.7	
2005	3,257	35.4	2,557	36.7	836	43.8	743	37.6	654	31.7	324	32.0			700	31.3	
UH MANOA 2/																	
1995	1,379	15.7	915	13.7	387	19.6	287	14.2	145	9.0	96	9.1			464	21.6	
1996	1,088	12.4	698	10.6	278	14.4	223	11.2	123	7.7	74	6.8			390	17.9	
1997	1,175	13.6	768	11.9	290	15.3	261	13.4	140	9.0	77	7.6			407	18.3	
1998	1,153	12.7	752	11.0	292	15.6	246	11.9	139	7.9	75	6.8			401	17.9	
1999	1,136	12.5	710	10.4	288	14.4	237	12.1	117	6.7	68	6.2			426	18.6	
2000	1,099	11.9	666	9.7	249	12.0	216	11.0	124	7.0	77	7.2			433	18.1	
2001	1,075	12.1	672	10.2	278	15.2	185	9.8	123	6.9	86	7.9			403	17.7	
2002	1,150	12.5	762	11.0	318	15.5	231	11.8	134	7.4	79	7.3			388	17.1	
2003	1,115	12.5	706	10.6	275	14.9	222	11.3	131	7.1	78	7.7			409	18.5	
2004	1,073	11.7	699	10.0	283	14.8	217	11.4	136	6.6	63	5.8			374	16.8	
2005	1,151	12.5	767	11.0	324	17.0	224	11.3	148	7.2	71	7.0			384	17.2	
UH HILO 2/																	
1995	63	0.7	30	0.5	6	0.3	13	0.6	10	0.6	1	0.1			33	1.5	
1996	56	0.6	24	0.4	7	0.4	10	0.5	3	0.2	4	0.4			32	1.5	
1997	55	0.6	29	0.5	6	0.3	11	0.6	8	0.5	4	0.4			26	1.2	
1998	45	0.5	26	0.4	6	0.3	13	0.6	2	0.1	5	0.5			19	0.9	
1999	56	0.6	31	0.5	8	0.4	14	0.7	2	0.1	7	0.6			25	1.1	
2000	40	0.4	23	0.3	8	0.4	9	0.5	2	0.1	4	0.4			17	0.7	
2001	41	0.5	22	0.3	5	0.3	10	0.5	5	0.3	2	0.2			19	0.8	
2002	37	0.4	16	0.2	4	0.2	10	0.5	1	0.1	1	0.1			21	0.9	
2003	33	0.4	20	0.3	4	0.2	3	0.2	11	0.6	2	0.2			13	0.6	
2004	33	0.4	11	0.2			3	0.2	5	0.2	3	0.3			22	1.0	
2005	48	0.5	18	0.3	3	0.2	7	0.4	4	0.2	4	0.4			30	1.3	

TABLE 5 (cont.)

CAMPUS & FALL SEMESTER	TOTAL O'AHU No. Rate		PUBLIC HIGH SCHOOL DISTRICT										PRIVATE HIGH SCHOOLS Going No. Rate			
			Subtotal Going		Honolulu Going		Central Going		Leeward Going		Windward Going				Special Going	
			No.	Rate	No.	Rate	No.	Rate	No.	Rate	No.	Rate			No.	Rate
UH COMMUNITY COLLEGES 3/																
1995	2,014	22.9	1,733	26.0	608	30.8	507	25.1	394	24.5	222	21.1	2	40.0	281	13.1
1996	2,039	23.2	1,715	26.0	607	31.5	483	24.3	412	25.9	211	19.4	2	25.0	324	14.8
1997	2,045	23.6	1,706	26.5	567	29.9	483	24.8	395	25.3	259	25.7	2	12.5	339	15.3
1998	2,161	23.9	1,825	26.8	589	31.5	551	26.6	429	24.4	254	22.9	2	100.0	336	15.0
1999	2,266	24.9	1,919	28.2	645	32.3	515	26.3	460	26.2	299	27.1			347	15.1
2000	1,941	20.9	1,618	23.5	533	25.7	430	22.0	411	23.1	242	22.7	2	28.6	323	13.5
2001	1,912	21.5	1,643	24.9	486	26.6	486	25.9	405	22.6	263	24.1	3	30.0	269	11.8
2002	1,965	21.4	1,675	24.2	545	26.6	458	23.4	433	23.8	237	21.8	2	12.5	290	12.8
2003	1,943	21.9	1,686	25.2	515	27.9	497	25.3	423	23.0	249	24.5	2	18.2	257	11.6
2004	1,958	21.3	1,716	24.6	495	25.8	484	25.5	492	23.9	244	22.4	1	10.0	242	10.9
2005	2,058	22.4	1,772	25.4	509	26.6	512	25.9	502	24.4	249	24.6			286	12.8
HS GRADS	No.	H%	No.	H%	No.	H%	No.	H%	No.	H%	No.	H%	No.	H%	No.	H%
1995	8,810	100.0	6,663	75.6	1,976	22.4	2,021	22.9	1,608	18.3	1,053	12.0	5	0.1	2,147	24.4
1996	8,781	100.0	6,597	75.1	1,929	22.0	1,984	22.6	1,591	18.1	1,085	12.4	8	0.1	2,184	24.9
1997	8,648	100.0	6,429	74.3	1,898	21.9	1,946	22.5	1,561	18.1	1,008	11.7	16	0.2	2,219	25.7
1998	9,049	100.0	6,814	75.3	1,872	20.7	2,071	22.9	1,761	19.5	1,108	12.2	2	<0.1	2,235	24.7
1999	9,113	100.0	6,817	74.8	1,997	21.9	1,955	21.5	1,754	19.2	1,103	12.1	8	0.1	2,296	25.2
2000	9,268	100.0	6,879	74.2	2,072	22.4	1,956	21.1	1,779	19.2	1,065	11.5	7	0.1	2,389	25.8
2001	8,875	100.0	6,601	74.4	1,827	20.6	1,879	21.2	1,793	20.2	1,092	12.3	10	0.1	2,274	25.6
2002	9,195	100.0	6,921	75.3	2,047	22.3	1,955	21.3	1,818	19.8	1,085	11.8	16	0.2	2,274	24.7
2003	8,889	100.0	6,679	75.1	1,848	20.8	1,962	22.1	1,840	20.7	1,018	11.5	11	0.1	2,210	24.9
2004	9,199	100.0	6,976	75.8	1,918	20.9	1,901	20.7	2,060	22.4	1,087	11.8	10	0.1	2,223	24.2
2005	9,198	100.0	6,963	75.7	1,910	20.8	1,978	21.5	2,061	22.4	1,012	11.0	2	<0.1	2,235	24.3

1/ The "going rate" in this table is the percentage of O'ahu high school graduates entering the University of Hawai'i system in the fall semester immediately following graduation from high school.

2/ Entering freshmen only.

3/ Includes all regular first-time students; excludes specials (early admits and concurrents).

SOURCES: IRO Base Table, Census Fall 2005; State of Hawai'i Department of Education and administrative offices of private high schools.

TABLE 6
NUMBER AND GOING RATE OF HAWAII STATE HIGH SCHOOL GRADUATES
ENTERING THE UNIVERSITY OF HAWAII SYSTEM, BY DISTRICT AND SCHOOL
FALL 2001 TO FALL 2005

DISTRICT AND HIGH SCHOOL	Fall 2001		Fall 2002		Fall 2003		Fall 2004		Fall 2005	
	No.	Going Rate	No.	Going Rate	No.	Going Rate	No.	Going Rate	No.	Going Rate
TOTAL	4,102	31.7	4,343	32.5	4,213	32.8	4,183	31.7	4,411	33.0
PUBLIC SCHOOLS	3,369	32.6	3,583	33.3	3,467	33.6	3,487	32.7	3,646	33.6
O'ahu, Regular	2,334	35.4	2,451	35.5	2,410	36.1	2,425	34.8	2,557	36.7
Honolulu	769	42.1	867	42.4	794	43.0	778	40.6	836	43.8
Anuenue	3	75.0	3	50.0	4	40.0	4	40.0	3	50.0
Education Laboratory PCS 1/			17	36.2	11	27.5	22	44.9	23	46.0
Farrington	102	26.0	126	27.2	111	25.6	110	22.9	122	26.9
Halau Lokahi Charter 2/					1	50.0	1	16.7	1	12.5
Kaimuki	107	45.7	109	41.6	111	45.9	102	44.3	97	40.2
Kaiser	102	37.6	140	48.6	128	50.8	110	46.2	105	45.1
Kalani	134	56.5	149	60.3	127	53.6	120	56.1	160	61.5
McKinley	162	42.0	173	44.4	133	42.6	136	41.2	152	46.9
Myron B. Thompson Acad PCS 3/			1	16.7	3	20.0	6	23.1	8	29.6
Roosevelt	159	52.6	149	44.2	165	55.2	167	50.2	165	53.9
Leeward	1,214	33.1	1,267	33.6	1,287	33.9	1,337	33.8	1,397	34.6
Central	681	36.2	699	35.8	722	36.8	704	37.0	743	37.6
Aiea	147	45.5	150	45.9	131	41.6	118	41.4	100	38.3
Leilehua	87	24.4	81	22.3	93	25.2	89	25.1	87	25.8
Mililani	183	40.1	186	39.8	212	45.9	221	49.3	286	51.7
Moanalua	159	41.0	175	42.8	201	42.9	178	41.9	161	35.5
Radford	68	26.4	78	27.3	59	22.6	78	27.9	76	27.1
Waialua	37	38.1	29	28.4	26	29.9	20	18.5	33	35.1
Leeward	533	29.7	568	31.2	565	30.7	633	30.7	654	31.7
Campbell	108	24.8	127	27.9	135	28.3	94	25.1	96	25.5
Kapolei 4/							127	38.6	130	36.9
Nanakuli	22	13.9	21	11.5	14	10.7	27	18.4	13	9.2
Pearl City	204	48.2	194	54.5	201	49.6	193	46.6	223	49.2
Wai'anae	71	20.4	85	23.4	72	20.0	56	16.0	61	20.3
Waipahu	128	29.9	141	30.6	143	30.6	136	30.6	131	29.9
Windward	351	32.1	317	29.2	329	32.3	310	28.5	324	32.0
Castle	156	41.2	129	36.3	142	38.5	131	37.5	164	44.7
Kahuku	48	19.0	52	17.9	57	23.1	44	14.7	36	14.9
Kailua	74	33.6	70	30.2	81	36.8	62	30.7	64	29.9
Kalaheo	73	30.4	66	31.9	49	27.2	70	30.0	60	31.6
Ke Kula 'O Samuel M. Kamakau PCS 2/							3	75.0		
O'ahu, Special	3	30.0	2	12.5	2	18.2	1	10.0		
Hawaii Center for Deaf & Blind	3	42.9	2	20.0	2	20.0	1	14.3		
Neighbor Islands	1,030	27.6	1,130	29.4	1,055	29.0	1,061	28.8	1,088	28.0
Hawaii	440	26.5	498	28.5	494	30.7	528	31.5	494	29.0
Hawaii Acad of Arts & Sci PCS 5/					2	16.7			2	10.0
Hilo	94	27.0	126	33.2	123	37.5	122	39.9	112	34.7
Honoka'a	31	25.6	33	23.2	27	25.0	34	23.6	26	16.1
Kanu O Ka 'Aina PCS 6/	1	25.0			1	12.5	4	36.4		
Ka'u	19	26.8	20	24.4	22	34.4	21	31.3	13	21.0
Ke Ana La'ahana Charter 5/			1	25.0	1	33.3	4	30.8		
Kea'au 2/					90	46.9	55	35.3	56	33.3
Kealakehe 6/	45	17.2	46	19.2	56	20.7	62	21.7	49	18.5
Kohala	16	22.2	21	30.0	12	16.4	27	37.0	13	20.0
Kona Waena	44	27.3	42	22.0	23	16.3	22	14.4	41	24.4
Laupahoehoe	5	26.3	5	29.4	4	18.2	3	18.8	5	22.7
Pahoa	41	33.3	33	23.7	30	28.3	30	29.7	32	24.1
Waiakea	144	31.2	171	38.3	103	38.1	141	43.3	144	50.2
West HI Expl Acad PCS 6/							3	50.0	1	11.1

TABLE 6 (cont.)

DISTRICT AND HIGH SCHOOL	Fall 2001		Fall 2002		Fall 2003		Fall 2004		Fall 2005	
	No.	Going Rate	No.	Going Rate	No.	Going Rate	No.	Going Rate	No.	Going Rate
Maui County	375	27.7	391	27.9	367	26.7	334	25.1	355	24.0
Baldwin	105	29.8	102	27.9	90	26.0	89	25.8	88	21.6
Hana	3	11.5	10	34.5	6	30.0	9	39.1	4	12.5
Kihei Public Charter PCS 5/					2	20.0				
King Kekaulike	73	26.8	73	23.7	83	25.9	65	23.0	98	30.9
Lahaina Luna	29	16.5	58	31.9	42	23.3	47	22.4	50	20.7
Lana'i	16	30.8	12	24.0	12	27.3	14	28.0	11	25.0
Maui	124	33.3	113	31.4	116	34.2	88	29.3	76	23.3
Moloka'i	25	23.8	23	22.5	16	13.7	22	20.0	28	27.2
Kaua'i	215	30.2	241	34.3	194	29.9	199	29.5	239	34.0
Kanuikapono Charter School 7/									1	50.0
Kapa'a	58	24.4	67	27.5	89	35.9	68	28.1	75	34.4
Kaua'i	100	35.1	109	41.6	64	28.3	74	30.0	99	34.4
Ke Kula Ni'ihau 'O Kekaha PCS 2/							1	50.0		
Kula Aupuni Ni'ihau A Kahelelani Aloha 8/ Waimea	57	30.5	65	33.9	41	24.4	54	30.5	63	34.1
Unknown / Miscoded	2	NA							1	NA
PRIVATE SCHOOLS	733	28.2	760	29.3	746	29.5	696	27.2	765	30.3
O'ahu	691	30.4	699	30.7	679	30.7	638	28.7	700	31.3
Academy of the Pacific	9	28.1	8	23.5	10	19.6	10	33.3	14	34.1
ASSETS School	4	40.0	5	33.3	5	25.0	10	43.5	6	28.6
Christian Academy 5/							3	60.0	2	25.0
Damien	42	43.3	41	48.8	40	49.4	37	35.2	47	50.0
Hanalani 9/	11	37.9	39	125.8	16	55.2	11	40.7	6	33.3
Hawai'i Baptist Academy	44	43.6	40	39.6	46	45.5	35	36.8	50	49.5
Hawaiian Mission Academy	16	35.6	12	37.5	7	24.1	9	28.1	9	22.0
Ho'ala School	1	25.0			7	58.3	1	25.0	1	16.7
Honolulu Waldorf School	2	22.2	2	11.8	3	33.3	5	23.8	3	15.8
Iolani	39	17.7	33	14.0	28	13.0	31	13.1	27	12.1
Kailua Christian Academy	3	60.0	1	11.1	2	25.0			1	33.3
Kamehameha	157	36.5	140	31.9	153	34.6	139	32.1	201	45.4
Koolau Baptist	2	28.6	4	66.7	1	50.0			6	50.0
La Pietra	5	16.7	6	19.4	6	17.6	10	29.4	11	40.7
Lanakila Baptist	4	22.2	4	33.3	5	26.3	1	5.3	6	26.1
Lutheran High School of Hawai'i	26	74.3	26	72.2	22	78.6	22	66.7	18	78.3
Maile Bible	1	25.0					1	33.3	3	42.9
Maryknoll	54	41.5	51	38.6	57	43.5	56	41.8	54	38.3
Mid-Pacific Institute	49	26.6	61	33.5	66	37.9	55	31.6	57	31.0
Punahou	46	11.1	39	9.2	54	12.9	47	11.3	40	9.5
Redemption Academy	3	50.0	4	40.0	4	66.7	1	16.7	7	53.8
Sacred Hearts Academy	43	36.4	58	49.2	42	33.6	43	35.2	39	32.8
Saint Andrew's Priory	10	32.3	12	31.6	11	35.5	12	27.9	7	25.0
Saint Francis	35	43.8	33	47.1	27	30.0	46	79.3	23	30.3
Saint Louis	58	40.8	75	44.6	67	48.2	45	34.6	55	47.0
University 1/	19	39.6								
Varsity 10/	8	28.6	5	19.2						
Word of Life 4/							8	25.8	7	30.4
Hawai'i	25	14.9	29	17.0	32	21.8	34	20.9	37	24.7
Christian Liberty	2	22.2	4	80.0	4	40.0	2	22.2	2	28.6
Haili Christian School 11/									3	75.0
Hawai'i Prep Academy	7	8.0	2	2.4	12	15.6	12	15.6	8	10.5
Makua Lani Christian			2	15.4	1	16.7	3	30.0	4	40.0
Parker	2	11.1	5	21.7	2	8.7	3	12.5	4	25.0
Saint Joseph	14	31.8	16	34.0	13	41.9	14	32.6	16	43.2
Maui County	11	8.0	23	17.7	24	16.8	16	12.7	16	14.7
Ka'ahumanu Hou Christian	2	11.1			5	41.7	2	25.0	1	33.3
Saint Anthony	5	7.9	19	36.5	16	24.6	13	27.1	12	31.6
Seabury Hall	4	7.4	4	6.6	3	4.8	1	1.5	3	4.8

TABLE 6 (cont.)

DISTRICT AND HIGH SCHOOL	Fall 2001		Fall 2002		Fall 2003		Fall 2004		Fall 2005	
	No.	Going Rate	No.	Going Rate	No.	Going Rate	No.	Going Rate	No.	Going Rate
Kaua'i	5	21.7	7	31.8	6	21.4	8	18.6	10	30.3
Island School	1	16.7	2	20.0	3	23.1	3	12.5	5	25.0
Kahili Adventist School	3	75.0	1	20.0			3	60.0	3	100.0
Kula High School	1	7.7	4	57.1	3	27.3	2	16.7	2	20.0
Unknown / Miscoded	1	NA	2	NA	5	NA			2	NA

1/ University Lab School became the Education Lab Public Charter School in August 2002.

2/ First graduates reported in June 2003.

3/ Formerly called Hawai'i E-Charter. First graduating class June 2002.

4/ First graduating class June 2004.

5/ First graduating class June 2002.

6/ First graduates reported June 2001.

7/ Formerly called Ipu Ha'a Academy of Natural Sciences. First graduates reported June 2005.

8/ Formerly called Ni'ihau School of Kekaha. First graduates reported June 2003.

9/ Number enrolled and going rate are overstated for Fall 2002; corrected data not available.

10/ School closed in 2003; graduate count for June 2003 unavailable.

11/ First graduating class June 2005.

Note: The "going rate" is the percentage of graduates from a given high school entering the UH campuses in the fall semester immediately following graduation from high school.

SOURCES: IRO Base Table, Census Fall 2005; UH registration system for prior years.

TABLE 6A
NUMBER AND GOING RATE OF HAWAI'I STATE HIGH SCHOOL GRADUATES
ENTERING THE UNIVERSITY OF HAWAI'I AT MANOA, BY DISTRICT AND SCHOOL
FALL 2001 TO FALL 2005

DISTRICT AND HIGH SCHOOL	Fall 2001		Fall 2002		Fall 2003		Fall 2004		Fall 2005	
	No.	Going Rate	No.	Going Rate	No.	Going Rate	No.	Going Rate	No.	Going Rate
TOTAL	1,262	9.7	1,381	10.3	1,333	10.4	1,278	9.7	1,358	10.2
PUBLIC SCHOOLS	846	8.2	976	9.1	899	8.7	893	8.4	958	8.8
O'ahu, Regular	672	10.2	762	11.0	706	10.6	699	10.0	767	11.0
Honolulu	278	15.2	318	15.5	275	14.9	283	14.8	324	17.0
Anuenue	2	50.0	1	16.7	1	10.0	1	10.0		
Education Laboratory PCS 1/			10	21.3	7	17.5	16	32.7	17	34.0
Farrington	18	4.6	20	4.3	19	4.4	20	4.2	22	4.8
Kaimuki	36	15.4	48	18.3	42	17.4	32	13.9	34	14.1
Kaiser	54	19.9	59	20.5	47	18.7	47	19.7	51	21.9
Kalani	52	21.9	72	29.1	58	24.5	43	20.1	74	28.5
McKinley	55	14.2	52	13.3	46	14.7	47	14.2	38	11.7
Myron B. Thompson Acad PCS 2/					3	20.0	2	7.7	2	7.4
Roosevelt	61	20.2	56	16.6	52	17.4	75	22.5	86	28.1
Leeward	308	8.4	365	9.7	353	9.3	353	8.9	372	9.2
Central	185	9.8	231	11.8	222	11.3	217	11.4	224	11.3
Aiea	41	12.7	52	15.9	41	13.0	32	11.2	30	11.5
Leilehua	10	2.8	18	4.9	23	6.2	17	4.8	18	5.3
Mililani	50	11.0	71	15.2	59	12.8	68	15.2	92	16.6
Moanalua	66	17.0	66	16.1	77	16.5	72	16.9	57	12.6
Radford	12	4.7	16	5.6	16	6.1	24	8.6	19	6.8
Waialua	6	6.2	8	7.8	6	6.9	4	3.7	8	8.5
Leeward	123	6.9	134	7.4	131	7.1	136	6.6	148	7.2
Campbell	14	3.2	30	6.6	30	6.3	15	4.0	8	2.1
Kapolei 3/							35	10.6	37	10.5
Nanakuli	4	2.5	1	0.5	5	3.8	5	3.4	3	2.1
Pearl City	63	14.9	57	16.0	52	12.8	54	13.0	67	14.8
Wai'anae	17	4.9	16	4.4	13	3.6	7	2.0	6	2.0
Waipahu	25	5.8	30	6.5	31	6.6	20	4.5	27	6.2
Windward	86	7.9	79	7.3	78	7.7	63	5.8	71	7.0
Castle	38	10.0	27	7.6	32	8.7	21	6.0	42	11.4
Kahuku	14	5.5	11	3.8	13	5.3	12	4.0	7	2.9
Kailua	22	10.0	25	10.8	23	10.5	13	6.4	10	4.7
Kalaheo	12	5.0	16	7.7	10	5.6	16	6.9	12	6.3
Ke Kula 'O Sam M. Kamakau PCS 4/							1	25.0		
Neighbor Islands	174	4.7	214	5.6	193	5.3	194	5.3	191	4.9
Hawai'i	73	4.4	79	4.5	70	4.3	71	4.2	66	3.9
Hilo	13	3.7	20	5.3	9	2.7	14	4.6	9	2.8
Honoka'a	3	2.5	3	2.1	1	0.9	3	2.1	1	0.6
Ka'u	1	1.4	2	2.4	5	7.8	1	1.5	1	1.6
Kea'au 4/					7	3.6	2	1.3	5	3.0
Kealakehe 5/	8	3.1	17	7.1	13	4.8	19	6.6	15	5.7
Kohala	2	2.8	3	4.3	2	2.7	1	1.4	1	1.5
Kona Waena	14	8.7	8	4.2	7	5.0	6	3.9	10	6.0
Pahoa	6	4.9	5	3.6	6	5.7	2	2.0	4	3.0
Waiakea	26	5.6	21	4.7	20	7.4	23	7.1	20	7.0
Maui County	71	5.2	91	6.5	82	6.0	71	5.3	82	5.5
Baldwin	18	5.1	28	7.7	20	5.8	19	5.5	17	4.2
King Kekaulike	18	6.6	23	7.5	19	5.9	19	6.7	28	8.8
Lahaina Luna	5	2.8	11	6.0	10	5.6	11	5.2	12	5.0
Lana'i	5	9.6	4	8.0	3	6.8	5	10.0	3	6.8
Maui	22	5.9	17	4.7	27	8.0	15	5.0	17	5.2
Moloka'i	3	2.9	8	7.8	3	2.6	2	1.8	5	4.9
Kaua'i	30	4.2	44	6.3	41	6.3	52	7.7	43	6.1
Kapa'a	9	3.8	10	4.1	23	9.3	19	7.9	13	6.0
Kaua'i	15	5.3	21	8.0	12	5.3	23	9.3	21	7.3
Waimea	6	3.2	13	6.8	6	3.6	10	5.7	9	4.9

TABLE 6A (cont.)

DISTRICT AND HIGH SCHOOL	Fall 2001		Fall 2002		Fall 2003		Fall 2004		Fall 2005	
	No.	Going Rate	No.	Going Rate	No.	Going Rate	No.	Going Rate	No.	Going Rate
PRIVATE SCHOOLS	416	15.9	405	15.6	434	17.2	385	15.1	400	15.8
O'ahu	403	17.6	388	17.1	409	18.6	374	16.9	384	17.2
Academy of the Pacific			3	8.8	1	2.0	2	6.7	3	7.3
ASSETS School					1	5.0	2	8.7	3	14.3
Christian Academy 6/							2	40.0		
Damien	19	19.6	13	15.5	14	17.3	13	13.7	13	13.8
Hanalani	7	24.1	9	29.0	10	34.5	4	14.8	4	22.2
Hawai'i Baptist Academy	38	37.6	33	32.7	38	37.6	26	27.4	40	39.6
Hawaiian Mission Academy	2	4.4	1	3.1	2	6.9	3	9.4		
Ho'ala School					1	10.0				
Honolulu Waldorf School			1	5.9	1	11.1	3	14.3	3	15.8
Iolani	34	15.5	32	13.6	27	12.6	30	12.7	23	10.3
Kailua Christian Academy			1	11.1						
Kamehameha	88	20.5	75	17.1	85	19.2	64	14.8	97	21.9
Koolau Baptist			2	33.3						
La Pietra	4	9.3	4	16.7	5	14.7	10	29.4	10	37.0
Lanakila Baptist	2	11.1	2	16.7	2	10.5			3	13.0
Lutheran High School of Hawai'i	16	45.7	16	44.4	11	39.3	8	24.2	5	21.7
Maryknoll	32	24.6	35	26.5	37	28.2	43	32.1	43	30.5
Mid-Pacific Institute	32	17.4	44	24.2	45	25.9	39	22.4	44	23.9
Punahou	37	8.9	33	7.8	49	11.7	45	10.8	29	6.9
Redemption Academy			1	10.0						
Sacred Hearts Academy	25	21.2	26	22.0	26	20.8	28	23.0	22	18.5
Saint Andrew's Priory	5	16.1	11	28.9	9	29.0	8	18.6	6	21.4
Saint Francis	21	26.3	14	20.0	14	15.6	17	29.3	10	13.2
Saint Louis	26	18.3	32	19.0	31	22.3	25	19.2	24	20.5
University Lab School 1/	15	31.3								
Word of Life 3/							2	6.5	2	8.7
Hawai'i	8	4.8	5	2.9	13	8.8	6	3.7	9	6.0
Christian Liberty	1	11.1			2	20.0				
Hawai'i Prep Academy	7	8.0	1	1.2	10	13.0	5	6.5	7	9.2
Makua Lani Christian			1	7.7						
Parker					1	4.3			1	6.3
Saint Joseph			3	6.4			1	2.3	1	2.7
Maui County	4	2.9	7	5.4	6	4.2	3	2.4	4	3.7
Ka'ahumanu Hou Christian					2	16.7				
Saint Anthony	2	3.2	5	9.6	3	4.6	3	6.3	2	5.3
Seabury Hall	2	3.7	2	3.3	1	1.6			2	3.2
Kaua'i	1	4.3	5	22.7	5	17.9	2	4.9	3	9.1
Island School			2	20.0	3	23.1	2	8.3	1	5.0
Kula High School	1	7.7	3	42.9	2	18.2			2	20.0
Unknown / Miscoded					1	NA				

1/ University Lab School became the Education Lab Public Charter School in August 2002.

2/ Formerly called Hawai'i E-Charter. First graduating class June 2002.

3/ First graduates reported June 2004.

4/ First graduates reported June 2003.

5/ First graduates reported June 2001.

6/ First graduates reported June 2002.

Note: The "going rate" is the percentage of graduates from a given high school entering UH Manoa in the fall semester immediately following graduation from high school.

SOURCES: IRO Base Table, Census Fall 2005; UH registration system for prior years.

TABLE 6B
NUMBER AND GOING RATE OF HAWAI'I STATE HIGH SCHOOL GRADUATES
ENTERING THE UNIVERSITY OF HAWAI'I AT HILO, BY DISTRICT AND SCHOOL
FALL 2001 TO FALL 2005

DISTRICT AND HIGH SCHOOL	Fall 2001		Fall 2002		Fall 2003		Fall 2004		Fall 2005	
	No.	Going Rate	No.	Going Rate	No.	Going Rate	No.	Going Rate	No.	Going Rate
TOTAL	216	1.7	235	1.8	206	1.6	219	1.7	227	1.7
PUBLIC SCHOOLS	185	1.8	195	1.8	183	1.8	180	1.7	179	1.6
O'ahu, Regular	22	0.3	16	0.2	20	0.3	11	0.2	18	0.3
Honolulu	5	0.3	4	0.2	4	0.2			3	0.2
Education Laboratory PCS 1/									1	2.0
Farrington	2	0.5			2	0.5				
Kaiser	1	0.4	2	0.7					1	0.4
Kalani			1	0.4					1	0.4
McKinley			1	0.3						
Roosevelt	2	0.7			2	0.7				
Leeward	15	0.4	11	0.3	14	0.4	8	0.2	11	0.3
Central	10	0.5	10	0.5	3	0.2	3	0.2	7	0.4
Aiea	2	0.6	4	1.2	1	0.3				
Leilehua	4	1.1	1	0.3					1	0.3
Mililani	3	0.7	3	0.6	2	0.4	2	0.4	4	0.7
Moanalua							1	0.2	1	0.2
Waialua	1	1.0	2	2.0					1	1.1
Leeward	5	0.3	1	0.1	11	0.6	5	0.2	4	0.2
Campbell	3	0.7								
Kapolei 2/							1	0.3		
Pearl City	1	0.2			3	0.7	3	0.7		
Wai'anae	1	0.3			2	0.6	1	0.3	3	1.0
Waipahu			1	0.2	6	1.3			1	0.2
Windward	2	0.2	1	0.1	2	0.2	3	0.3	4	0.4
Castle			1	0.3	1	0.3	1	0.3		
Kahuku	1	0.4							1	0.4
Kailua	1	0.5			1	0.5	2	1.0	3	1.4
Neighbor Islands	163	4.4	179	4.6	163	4.5	169	4.6	161	4.1
Hawai'i	134	0.3	160	0.2	151	0.3	155	0.2	133	7.8
Hilo	29	8.3	40	10.5	45	13.7	38	12.4	31	9.6
Honoka'a	12	9.9	11	7.7	8	7.4	10	6.9	3	1.9
Kanu O Ka 'Aina PCS 3/	1	25.0								
Ka'u	6	8.5	8	9.8	3	4.7	6	9.0	4	6.5
Ke Ana La'ahana PCS 4/							2	15.4		
Kea'au 5/					27	14.1	11	7.1	15	8.9
Kealakehe 3/	13	5.0	6	2.5	9	3.3	9	3.1	12	4.5
Kohala	7	9.7	8	11.4	4	5.5	12	16.4	3	4.6
Kona Waena	3	1.9	7	3.7	2	1.4	2	1.3	6	3.6
Laupahoehoe	2	10.5	1	5.9	1	4.5	1	6.3	2	9.1
Pahoa	12	9.8	10	7.2	9	8.5	9	8.9	17	12.8
Waiakea	49	10.6	69	15.5	43	15.9	54	16.6	40	13.9
West HI Expl Acad PCS 3/							1	16.7		
Maui County	18	1.3	12	0.9	8	0.6	9	0.7	23	1.6
Baldwin	6	1.7	1	0.3	4	1.2	2	0.6	4	1.0
Hana			2	6.9					1	3.1
King Kekaulike	1	0.4	2	0.6	1	0.3			8	2.5
Lahaina Luna	1	0.6			1	0.6			2	0.8
Lana'i	2	3.8	1	2.0						
Maui	4	1.1	2	0.6	1	0.3	2	0.7	1	0.3
Moloka'i	4	3.8	4	3.9	1	0.9	5	4.5	7	6.8

TABLE 6B (cont.)

DISTRICT AND HIGH SCHOOL	Fall 2001		Fall 2002		Fall 2003		Fall 2004		Fall 2005	
	No.	Going Rate	No.	Going Rate	No.	Going Rate	No.	Going Rate	No.	Going Rate
Kaua'i	11	1.5	7	1.0	4	0.6	5	0.7	5	0.7
Kapa'a	3	1.3	2	0.8	1	0.4	2	0.8	1	0.5
Kaua'i	4	1.4	2	0.8	3	1.3	2	0.8	3	1.0
Waimea	4	2.1	3	1.6			1	0.6	1	0.5
PRIVATE SCHOOLS	31	1.2	40	1.5	23	0.9	39	1.5	48	1.9
O'ahu	19	0.8	21	0.9	13	0.6	22	1.0	30	1.3
Academy of the Pacific					1	2.0				
Damien	1	1.0	2	2.4					2	2.1
Hawai'i Baptist Academy									1	1.0
Hawaiian Mission Academy			1	3.1			1	3.1	2	4.9
Ho'ala School									1	16.7
Iolani	3	1.4								
Kamehameha	13	3.0	14	3.2	10	2.3	17	3.9	16	3.6
Maryknoll	1	0.8	2	1.5	1	0.8				
Mid-Pacific Institute					1	0.6			2	1.1
Punahou			2	0.5			1	0.2	2	0.5
Sacred Hearts Academy	1	0.8					1	0.8	1	0.8
Saint Andrew's Priory							2	4.7	1	3.6
Saint Louis									1	0.9
Word of Life 2/									1	4.3
Hawai'i	9	5.4	14	8.2	9	6.1	13	8.0	15	10.0
Christian Liberty	1	11.1	1	20.0	2	20.0			2	28.6
Haili Christian School 6/									1	25.0
Hawai'i Prep Academy					1	1.3	3	3.9		
Makua Lani Christian							1	10.0	1	10.0
Parker	1	5.6	4	17.4	1	4.3	3	12.5	3	18.8
Saint Joseph	7	15.9	9	19.1	5	16.1	6	14.0	8	21.6
Maui County	2	1.4	5	3.8			4	3.2	3	2.8
Saint Anthony			5	9.6			3	6.3	2	5.3
Seabury Hall	2	3.7					1	1.5	1	1.6
Kaua'i					1	3.6				
Kula High School					1	9.1				
Unknown / Miscoded	1	NA								

1/ University Lab School became the Education Lab Public Charter School in August 2002.

2/ First graduates reported June 2004.

3/ First graduates reported in June 2001.

4/ First graduates reported in June 2002.

5/ First graduates reported in June 2003.

6/ First graduates reported in June 2005.

Note: The "going rate" is the percentage of graduates from a given high school entering UH Hilo in the fall semester immediately following graduation from high school.

SOURCES: IRO Base Table, Census Fall 2005; UH registration system for prior years.

TABLE 6C (cont.)

DISTRICT AND HIGH SCHOOL	Fall 2001		Fall 2002		Fall 2003		Fall 2004		Fall 2005	
	No.	Going Rate	No.	Going Rate	No.	Going Rate	No.	Going Rate	No.	Going Rate
PRIVATE SCHOOLS	10	0.4	8	0.3	9	0.4	11	0.4	14	0.6
O'ahu	3	0.1	1	<0.1			2	0.1	4	0.2
Academy of the Pacific			1	2.9						
Damien	1	1.0								
Kamehameha	2	0.5					2	0.5	3	0.7
Saint Francis									1	1.3
Hawai'i	7	4.2	6	3.5	8	5.4	9	5.5	10	6.7
Christian Liberty			1	20.0			2	22.2		
Haili Christian School 5/									2	50.0
Makua Lani Christian					1	16.7	2	20.0	3	30.0
Parker	1	5.6	1	4.3						
Saint Joseph	6	13.6	4	8.5	7	22.6	5	11.6	5	13.5
Maui County			1	0.8	1	0.7				
Saint Anthony			1	1.9	1	1.5				

1/ First graduating class June 2004.

2/ First graduating class June 2002.

3/ First graduates reported June 2001.

4/ First graduates reported in June 2003.

5/ First graduates reported in June 2005.

Note: The "going rate" is the percentage of graduates from a given high school entering Hawai'i Community College in the fall semester immediately following graduation from high school.

SOURCES: IRO Base Table, Census Fall 2005; UH registration system for prior years.

TABLE 6D
NUMBER AND GOING RATE OF HAWAI'I STATE HIGH SCHOOL GRADUATES
ENTERING HONOLULU COMMUNITY COLLEGE, BY DISTRICT AND SCHOOL
FALL 2001 TO FALL 2005

DISTRICT AND HIGH SCHOOL	Fall 2001		Fall 2002		Fall 2003		Fall 2004		Fall 2005	
	No.	Going Rate	No.	Going Rate	No.	Going Rate	No.	Going Rate	No.	Going Rate
TOTAL	338	2.6	386	2.9	357	2.8	439	3.3	437	3.3
PUBLIC SCHOOLS	305	3.0	350	3.3	337	3.3	396	3.7	408	3.8
O'ahu, Regular	282	4.3	321	4.6	311	4.7	374	5.4	383	5.5
Honolulu	116	6.3	149	7.3	144	7.8	164	8.6	157	8.2
Anuenue	1	25.0			1	10.0			1	16.7
Education Laboratory PCS 1/			1	2.1					1	2.0
Farrington	40	10.2	47	10.1	39	9.0	54	11.2	58	12.8
Halau Lokahi Charter 2/									1	0.1
Kaimuki	9	3.8	7	2.7	14	5.8	8	3.5	14	5.8
Kaiser	2	0.7	14	4.9	13	5.2	10	4.2	4	1.7
Kalani	6	2.5	10	4.0	1	0.4	15	7.0	5	1.9
McKinley	37	9.6	39	10.0	41	13.1	39	11.8	44	13.6
Myron B. Thompson Acad PCS 3/							2	0.9	1	0.4
Roosevelt	21	7.0	31	9.2	35	11.7	36	10.8	28	9.2
Leeward	134	3.6	142	3.8	135	3.6	176	4.4	190	4.7
Central	79	4.2	94	4.8	86	4.4	101	5.3	120	6.1
Aiea	15	4.6	20	6.1	10	3.2	17	6.0	12	4.6
Leilehua	15	4.2	9	2.5	8	2.2	15	4.2	11	3.3
Mililani	13	2.9	16	3.4	23	5.0	20	4.5	33	6.0
Moanalua	25	6.4	29	7.1	34	7.3	35	8.2	41	9.1
Radford	10	3.9	15	5.2	9	3.4	13	4.6	15	5.4
Waialua	1	1.0	5	4.9	2	2.3	1	0.9	8	8.5
Leeward	55	3.1	48	2.6	49	2.7	75	3.6	70	3.4
Campbell	12	2.8	9	2.0	18	3.8	13	3.5	15	4.0
Kapolei 4/							13	4.0	8	2.3
Nanakuli	1	0.6	4	2.2	1	0.8	2	1.4	3	2.1
Pearl City	11	2.6	11	3.1	14	3.5	15	3.6	19	4.2
Wai'anae	9	2.6	7	1.9	5	1.4	8	2.3	13	4.3
Waipahu	22	5.1	17	3.7	11	2.4	24	5.4	12	2.7
Windward	32	2.9	30	2.8	32	3.1	34	3.1	36	3.6
Castle	15	4.0	13	3.7	15	4.1	16	4.6	13	3.5
Kahuku	3	1.2	6	2.1	6	2.4	3	1.0	3	1.2
Kailua	6	2.7	5	2.2	10	4.5	9	4.5	9	4.2
Kalaheo	8	3.3	6	2.9	1	0.6	5	2.1	11	5.8
Ke Kula 'O Sam M. Kamakau PCS 2/							1	25.0		
Neighbor Islands	23	0.6	29	0.8	26	0.7	22	0.6	25	0.6
Hawai'i	6	0.4	8	0.5	7	0.4	8	0.5	9	0.5
Hilo	2	0.6	1	0.3	1	0.3				
Honoka'a	1	0.8	1	0.7	2	1.9			1	0.6
Kea'au 2/							1	0.6		
Kealahou 5/			2	0.8	2	0.7	2	0.7	1	0.4
Kohala							2	2.7		
Kona Waena	1	0.6	2	1.0			2	1.3	4	2.4
Laupahoehoe			1	5.9						
Pahoa	1	0.8							1	0.8
Waiakea	1	0.2	1	0.2	2	0.7	1	0.3	2	0.7
Maui County	11	0.8	14	1.0	12	0.9	10	0.8	8	0.5
Baldwin			1	0.3	1	0.3	1	0.3	1	0.2
Hana							1	4.3	2	6.3
King Kekaulike					4	1.3	1	0.4	2	0.6
Lahaina Luna			3	1.6			2	1.0		
Lana'i	1	1.9	4	8.0	6	13.6	2	4.0	1	2.3
Maui	5	1.3	1	0.3	1	0.3	1	0.3	1	0.3
Moloka'i	5	4.8	5	4.9			2	1.8	1	1.0

TABLE 6D (cont.)

DISTRICT AND HIGH SCHOOL	Fall 2001		Fall 2002		Fall 2003		Fall 2004		Fall 2005	
	No.	Going Rate	No.	Going Rate	No.	Going Rate	No.	Going Rate	No.	Going Rate
Kaua'i	6	0.8	7	1.0	7	1.1	4	0.6	8	1.1
Kapa'a	1	0.4	1	0.4	1	0.4			1	0.5
Kaua'i	4	1.4	3	1.1	6	2.7	4	1.6	3	1.0
Waimea	1	0.5	3	1.6					4	2.2
PRIVATE SCHOOLS	33	1.3	36	1.4	20	0.8	43	1.7	29	1.1
O'ahu	33	1.4	35	1.5	19	0.9	42	1.9	29	1.3
Academy of the Pacific			1	2.9	1	2.0	1	3.3	1	2.4
ASSETS School			1	6.7			3	13.0		
Christian Academy 6/									1	12.5
Damien	6	6.2	9	10.7	1	1.2	9	9.5	4	4.3
Hanalani			4	12.9	1	3.4				
Hawai'i Baptist Academy			3	3.0			2	2.1	1	1.0
Hawaiian Mission Academy	5	7.0	1	3.1	2	6.9			1	2.4
Ho'ala School							1	25.0		
Iolani									2	0.9
Kamehameha	4	0.9	2	0.5	2	0.5	10	2.3	3	0.7
Koolau Baptist	1	14.3								
La Pietra									1	3.7
Lanakila Baptist	1	5.6							1	4.3
Lutheran High School of Hawai'i	1	2.9	2	5.6	3	10.7	2	6.1	1	4.3
Maryknoll	2	1.5	1	0.8	2	1.5	3	2.2		
Mid-Pacific Institute	1	0.5			2	1.1	1	0.6		
Punahou	1	0.2							1	0.2
Redemption Academy									2	15.4
Sacred Hearts Academy	1	0.8					1	0.8	1	0.8
Saint Andrew's Priory	1	3.2	1	2.6						
Saint Francis	2	2.5	2	2.9	1	1.1	2	3.4	1	1.3
Saint Louis	5	3.5	8	4.8	4	2.9	3	2.3	7	6.0
University 1/	1	2.1								
Varsity 7/	1	3.6								
Word of Life 4/							4	12.9	1	4.3
Hawai'i					1	0.7				
Hawai'i Prep Academy					1	1.3				
Maui County			1	0.8			1	0.8		
Saint Anthony			1	1.9			1	2.1		

1/ University Lab School became the Education Lab Public Charter School in August 2002.

2/ First graduates reported June 2003.

3/ Formerly called Hawai'i E-Charter. First graduating class June 2002.

4/ First graduates reported June 2004.

5/ First graduates reported June 2001.

6/ First graduates reported June 2002.

7/ School closed in 2003.

Note: The "going rate" is the percentage of graduates from a given high school entering Honolulu Community College in the fall semester immediately following graduation from high school.

SOURCES: IRO Base Table, Census Fall 2005; UH registration system for prior years.

TABLE 6E
NUMBER AND GOING RATE OF HAWAI'I STATE HIGH SCHOOL GRADUATES
ENTERING KAPI'OLANI COMMUNITY COLLEGE, BY DISTRICT AND SCHOOL
FALL 2001 TO FALL 2005

DISTRICT AND HIGH SCHOOL	Fall 2001		Fall 2002		Fall 2003		Fall 2004		Fall 2005	
	No.	Going Rate	No.	Going Rate	No.	Going Rate	No.	Going Rate	No.	Going Rate
TOTAL	686	5.3	640	4.8	643	5.0	574	4.3	629	4.7
PUBLIC SCHOOLS	571	5.5	518	4.8	503	4.9	464	4.4	517	4.8
O'ahu, Regular	496	7.5	467	6.8	461	6.9	419	6.0	474	6.8
Honolulu	351	19.2	357	17.4	340	18.4	307	16.0	324	17.0
Anuenue							1	10.0		
Education Laboratory PCS 1/			4	8.5	4	10.0	4	8.2	2	4.0
Farrington	33	8.4	44	9.5	41	9.5	31	6.4	35	7.7
Kaimuki	60	25.6	53	20.2	53	21.9	60	26.1	49	20.3
Kaiser	45	16.6	62	21.5	66	26.2	52	21.8	46	19.7
Kalani	76	32.1	65	26.3	66	27.8	61	28.5	79	30.4
McKinley	68	17.6	76	19.5	40	12.8	47	14.2	65	20.1
Myron B. Thompson Acad PCS 2/ ..			1	16.7			2	7.7		
Roosevelt	69	22.8	52	15.4	70	23.4	49	14.7	48	15.7
Leeward	101	2.8	78	2.1	91	2.4	82	2.1	114	2.8
Central	61	3.2	49	2.5	48	2.4	45	2.4	68	3.4
Aiea	25	7.7	10	3.1	10	3.2	6	2.1	8	3.1
Leilehua	1	0.3			1	0.3	2	0.6	4	1.2
Mililani	5	1.1	3	0.6	6	1.3	9	2.0	8	1.4
Moanalua	22	5.7	25	6.1	25	5.3	22	5.2	35	7.7
Radford	6	2.3	8	2.8	3	1.1	4	1.4	13	4.6
Waiialua	2	2.1	3	2.9	3	3.4	2	1.9		
Leeward	40	2.2	29	1.6	43	2.3	37	1.8	46	2.2
Campbell	11	2.5	5	1.1	9	1.9	16	4.3	11	2.9
Kapolei 3/							2	0.6	6	1.7
Nanakuli	2	1.3			1	0.8	1	0.7		
Pearl City	14	3.3	10	2.8	17	4.2	10	2.4	20	4.4
Wai'anae	1	0.3	6	1.6	3	0.8	3	0.9	2	0.7
Waipahu	12	2.8	8	1.7	13	2.8	5	1.1	7	1.6
Windward	44	4.0	32	2.9	30	2.9	30	2.8	36	3.6
Castle	22	5.8	16	4.5	6	1.6	11	3.2	17	4.6
Kahuku	1	0.4	3	1.0	1	0.4	1	0.3	2	0.8
Kailua	15	6.8	12	5.2	18	8.2	12	5.9	13	6.1
Kalaheo	6	2.5	1	0.5	5	2.8	6	2.6	4	2.1
O'ahu, Special	3	30.0	2	18.2	2	18.2	1	10.0		
Hawai'i Center for Deaf & Blind	3	42.9	2	40.0	2	20.0	1	14.3		
Neighbor Islands	72	1.9	49	1.3	40	1.1	44	1.2	43	1.1
Hawai'i	27	1.6	27	1.5	17	1.1	20	1.2	14	0.8
Hawai'i Acad of Arts & Sci PCS 4/									1	5.0
Hilo			7	1.8			8	2.6	2	0.6
Honoka'a			2	1.4	1	0.9	1	0.7	1	0.6
Ka'u					1	1.6				
Ke Ana La'ahana PCS 4/							1	7.7		
Kealakehe 5/	3	1.1	5	2.1	10	3.7	5	1.7	4	1.5
Kohala					1	1.4	1	1.4	1	1.5
Kona Waena	8	5.0	9	4.7	3	2.1	1	0.7	2	1.2
Laupahoehoe	2	10.5								
Pahoa	6	4.9	1	0.7			2	2.0		
Waiakea	8	1.7	3	0.7	1	0.4	1	0.3	3	1.0
Maui County	17	1.3	11	0.8	10	0.7	12	0.9	17	1.1
Baldwin	2	0.6	4	1.1			3	0.9	4	1.0
Hana	2	7.7			1	5.0				
King Kekaulike			1	0.3	3	0.9				
Lahaina Luna	2	1.1	1	0.5			1	0.5	5	2.1
Lana'i			1	2.0			5	10.0	2	4.5
Maui	8	2.2	4	1.1	5	1.5	2	0.7	4	1.2
Moloka'i	3	2.9			1	0.9	1	0.9	2	1.9

TABLE 6E (cont.)

DISTRICT AND HIGH SCHOOL	Fall 2001		Fall 2002		Fall 2003		Fall 2004		Fall 2005	
	No.	Going Rate	No.	Going Rate	No.	Going Rate	No.	Going Rate	No.	Going Rate
Kaua'i	28	3.9	11	1.6	13	2.0	12	1.8	12	1.7
Kapa'a	15	6.3	5	2.0	9	3.6	3	1.2	3	1.4
Kaua'i	3	1.1	2	0.8	2	0.9			8	2.8
Waimea	10	5.3	4	2.1	2	1.2	9	5.1	1	0.5
PRIVATE SCHOOLS	115	4.4	122	4.7	140	5.6	110	4.3	112	4.4
O'ahu	113	4.9	119	5.3	135	6.1	103	4.7	109	4.9
Academy of the Pacific	5	15.6	2	5.9	2	3.9	4	13.3	6	14.6
ASSETS School	1	10.0					5	21.7	2	9.5
Damien	9	9.3	4	4.8	19	23.5	4	4.2	6	6.4
Hanalani	1	3.4							1	5.6
Hawai'i Baptist Academy	4	4.0	2	2.0	5	5.0	5	5.3	5	5.0
Hawaiian Mission Academy	6	13.3	6	18.8	3	10.3	4	12.5	5	12.2
Ho'ala School					1	10.0				
Honolulu Waldorf School	2	22.2			1	11.1	2	9.5		
Iolani	1	0.5	1	0.4			1	0.4	1	0.4
Kailua Christian Academy	1	20.0			1	12.5				
Kamehameha	16	3.7	15	3.4	17	3.8	8	1.8	21	4.7
La Pietra	1	2.3	1	4.2	1	2.9				
Lutheran High School of Hawai'i	4	11.4	8	22.2	6	21.4	8	24.2	9	39.1
Maile Bible	1	25.0								
Maryknoll	15	11.5	6	4.5	13	9.9	6	4.5	8	5.7
Mid-Pacific Institute	10	5.4	7	3.8	16	9.2	13	7.5	11	6.0
Punahou	6	1.4	4	0.9	5	1.2	1	0.2	4	0.9
Redemption Academy					1	16.7	1	16.7		
Sacred Hearts Academy	7	5.9	21	17.8	12	9.6	11	9.0	7	5.9
Saint Andrew's Priory					1	3.2	2	4.7		
Saint Francis	3	3.8	11	15.7	8	8.9	13	22.4	6	7.9
Saint Louis	15	10.6	26	15.5	23	16.5	14	10.8	15	12.8
University 1/	2	4.2								
Varsity 6/	3	10.7	5	19.2						
Word of Life 3/							1	3.2	2	8.7
Hawai'i	1	0.6	2	1.2	1	0.7	6	3.7	3	2.0
Christian Liberty			1	20.0						
Hawai'i Prep Academy							4	5.2	1	1.3
Makua Lani Christian			1	7.7						
Saint Joseph	1	2.3			1	3.2	2	4.7	2	5.4
Maui County	1	0.7								
Saint Anthony	1	1.6								
Kaua'i							1	2.4		
Kula High School							1	8.3		
Unknown / Miscoded			1	NA	4	NA				

1/ University Lab School became the Education Lab Public Charter School in August 2002.

2/ Formerly called Hawai'i E-Charter. First graduating class June 2002.

3/ First graduates reported June 2004.

4/ First graduates reported June 2002.

5/ First graduates reported June 2001.

6/ School closed in 2003.

Note: The "going rate" is the percentage of graduates from a given high school entering Kapi'olani Community College in the fall semester immediately following graduation from high school.

SOURCES: IRO Base Table, Census Fall 2005; UH registration system for prior years.

TABLE 6F
NUMBER AND GOING RATE OF HAWAII STATE HIGH SCHOOL GRADUATES
ENTERING KAUA'I COMMUNITY COLLEGE, BY DISTRICT AND SCHOOL
FALL 2001 TO FALL 2005

DISTRICT AND HIGH SCHOOL	Fall 2001		Fall 2002		Fall 2003		Fall 2004		Fall 2005	
	No.	Going Rate	No.	Going Rate	No.	Going Rate	No.	Going Rate	No.	Going Rate
TOTAL	145	1.1	169	1.3	127	1.0	131	1.0	174	1.3
PUBLIC SCHOOLS	137	1.3	166	1.5	123	1.2	124	1.2	166	1.5
O'ahu, Regular			1	<0.1	1	<0.1	3	<0.1	1	<0.1
Honolulu					1	0.1	1	0.1		
McKinley					1	0.3	1	0.3		
Leeward			1	<0.1			1	<0.1	1	<0.1
Central			1	0.1					1	0.1
Aiea									1	0.4
Moanalua			1	0.2						
Leeward							1	<0.1		
Wai'anae							1	0.3		
Windward							1	0.1		
Kalaheo							1	0.4		
Neighbor Islands	137	3.7	165	4.3	122	3.4	121	3.3	165	4.2
Hawaii	3	0.2								
Pahoa	1	0.8								
Waiakea	2	0.4								
Kaua'i	134	18.8	165	23.5	122	18.8	121	18.0	165	23.5
KauaiKapono Charter School 1/									1	50.0
Kapa'a	28	11.8	44	18.0	51	20.6	43	17.8	57	26.1
Kaua'i	72	25.3	80	30.5	40	17.7	44	17.8	60	20.8
Waimea	34	18.2	41	21.4	31	18.5	34	19.2	47	25.4
PRIVATE SCHOOLS	8	0.3	3	0.1	4	0.2	7	0.3	8	0.3
O'ahu	4	0.2	1	<0.1	4	0.2	2	0.1	3	0.1
Kamehameha	1	0.2			3	0.7	2	0.5	2	0.5
Saint Francis	3	3.8	1	1.4	1	1.1			1	1.3
Kaua'i	4	17.4	2	9.1			5	12.2	5	15.2
Island School	1	16.7					1	4.2	2	10.0
Kahili Adventist School	3	75.0	1	20.0			3	60.0	3	100.0
Kula High School			1	14.3			1	8.3		

1/ Formerly called Ipu Ha'a Academy of Natural Sciences. First graduates reported June 2005.

Note: The "going rate" is the percentage of graduates from a given high school entering Kaua'i Community College in the fall semester immediately following graduation from high school.

SOURCES: IRO Base Table, Census Fall 2005; UH registration system for prior years.

TABLE 6G
NUMBER AND GOING RATE OF HAWAI'I STATE HIGH SCHOOL GRADUATES
ENTERING LEEWARD COMMUNITY COLLEGE, BY DISTRICT AND SCHOOL
FALL 2001 TO FALL 2005

DISTRICT AND HIGH SCHOOL	Fall 2001		Fall 2002		Fall 2003		Fall 2004		Fall 2005	
	No.	Going Rate	No.	Going Rate	No.	Going Rate	No.	Going Rate	No.	Going Rate
TOTAL	767	5.9	785	5.9	811	6.3	803	6.1	812	6.1
PUBLIC SCHOOLS	698	6.8	710	6.6	746	7.2	743	7.0	737	6.8
O'ahu, Regular	684	10.4	705	10.2	732	11.0	734	10.5	724	10.4
Honolulu	14	0.8	27	1.3	27	1.5	12	0.6	23	1.2
Anuenue			2	33.3	2	20.0	2	20.0	1	16.7
Education Laboratory PCS 1/			1	2.1			1	2.0	2	4.0
Farrington	7	1.8	13	2.8	10	2.3	2	0.4	7	1.5
Halau Lokahi Charter 2/					1	50.0				
Kaimuki	2	0.9	1	0.4	1	0.4	1	0.4		
Kaiser			1	0.3	2	0.8			2	0.9
Kalani			1	0.4	1	0.4	1	0.5	1	0.4
McKinley	1	0.3	1	0.3	5	1.6	1	0.3	5	1.5
Myron B. Thompson Acad PCS 3/ ...									3	11.1
Roosevelt	4	1.3	7	2.1	5	1.7	4	1.2	2	0.7
Leeward	652	17.8	661	17.5	688	18.1	712	18.0	688	17.0
Central	345	18.4	309	15.8	357	18.2	335	17.6	309	15.6
Aiea	63	19.5	62	19.0	69	21.9	63	22.1	46	17.6
Leilehua	57	16.0	53	14.6	61	16.5	54	15.2	51	15.1
Mililani	112	24.6	93	19.9	120	26.0	122	27.2	142	25.7
Moanalua	46	11.9	51	12.5	61	13.0	47	11.1	26	5.7
Radford	40	15.5	39	13.6	31	11.9	36	12.9	28	10.0
Waialua	27	27.8	11	10.8	15	17.2	13	12.0	16	17.0
Leeward	307	17.1	352	19.4	331	18.0	377	18.3	379	18.4
Campbell	68	15.6	82	18.0	78	16.4	50	13.3	61	16.2
Kapolei 4/							75	22.8	78	22.2
Nanakuli	15	9.5	16	8.8	7	5.3	19	12.9	7	5.0
Pearl City	114	27.0	116	32.6	115	28.4	111	26.8	114	25.2
Wai'anae	42	12.1	53	14.6	49	13.6	36	10.3	36	12.0
Waipahu	68	15.9	85	18.4	82	17.6	86	19.4	83	19.0
Windward	18	1.6	17	1.6	17	1.7	10	0.9	13	1.3
Castle	2	0.5	2	0.6	1	0.3	1	0.3	3	0.8
Kahuku	11	4.3	14	4.8	13	5.3	8	2.7	5	2.1
Kailua	3	1.4			1	0.5			1	0.5
Kalaheo	2	0.8	1	0.5	2	1.1	1	0.4	4	2.1
Neighbor Islands	14	0.4	5	0.1	14	0.4	9	0.2	13	0.3
Hawai'i	7	0.4	1	0.1	1	0.1	3	0.2	4	0.2
Hilo	1	0.3								
Honoka'a							1	0.7		
Kanu O Ka 'Aina PCS 5/							1	9.1		
Kea'au 2/									1	0.6
Kealakehe 5/	2	0.8	1	0.4						
Kona Waena	3	1.9					1	0.7		
Waiakea	1	0.2			1	0.4			3	1.0
Maui County	6	0.4	3	0.2	10	0.7	4	0.3	7	0.5
Baldwin	2	0.6	1	0.3	1	0.3			1	0.2
King Kekaulike					1	0.3	1	0.4	2	0.6
Lahaina Luna					1	0.6			1	0.4
Lana'i	2	3.8	1	2.0	2	4.5	1	2.0		
Maui	2	0.5			5	1.5	1	0.3	1	0.3
Moloka'i			1	1.0			1	0.9	2	1.9
Kaua'i	1	0.1	1	0.1	3	0.5	2	0.3	2	0.3
Kapa'a					1	0.4				
Kaua'i					1	0.4			1	0.3
Kula Aupuni Ni'ihau A Kahelelani 6/ ...							2	1.1	1	33.3
Waimea	1	0.5	1	0.5	1	0.6				

TABLE 6G (cont.)

DISTRICT AND HIGH SCHOOL	Fall 2001		Fall 2002		Fall 2003		Fall 2004		Fall 2005	
	No.	Going Rate	No.	Going Rate	No.	Going Rate	No.	Going Rate	No.	Going Rate
PRIVATE SCHOOLS	69	2.6	75	2.9	65	2.6	60	2.4	75	3.0
O'ahu	69	3.0	74	3.3	65	3.0	60	2.7	72	3.2
Academy of the Pacific	2	6.3	1	2.9	3	5.9	2	6.7	1	2.4
ASSETS School	3	30.0	3	20.0	3	15.0			1	4.8
Christian Academy 7/							1	20.0	1	12.5
Damien	3	3.1	10	11.9	1	1.2	10	10.5	18	19.1
Hanalani	3	10.3	3	9.7	5	17.2	7	25.9	1	5.6
Hawai'i Baptist Academy	1	1.0	2	2.0	1	1.0			3	3.0
Hawaiian Mission Academy	1	2.2	2	6.3			1	3.1	1	2.4
Ho'ala School	1	25.0			5	50.0				
Iolani	1	0.5							1	0.4
Kamehameha	18	4.2	19	4.3	27	6.1	19	4.4	28	6.3
La Pietra			1	4.2						
Lanakila Baptist	1	5.6	2	16.7	3	15.8	1	5.3	2	8.7
Lutheran High School of Hawai'i	2	5.7			1	3.6	1	3.0	3	13.0
Maile Bible							1	33.3	3	42.9
Maryknoll	4	3.1	5	3.8	3	2.3	2	1.5	1	0.7
Mid-Pacific Institute	6	3.3	7	3.8	2	1.1	1	0.6		
Punahou	2	0.5								
Redemption Academy	1	16.7	1	10.0						
Sacred Hearts Academy	7	5.9	8	6.8	3	2.4	1	0.8	4	3.4
Saint Andrew's Priory	1	3.2								
Saint Francis	4	5.0	3	4.3	3	3.3	11	19.0	1	1.3
Saint Louis	6	4.2	7	4.2	5	3.6	1	0.8	3	2.6
University 1/	1	2.1								
Varsity 8/	1	3.6								
Word of Life 4/							1	3.2		
Hawai'i			1	0.6						
Christian Liberty			1	20.0						
Kaua'i									1	3.0
Island School									1	5.0
Unknown / Miscoded									2	NA

1/ University Lab School became the Education Lab Public Charter School in August 2002.

2/ First graduates reported June 2003.

3/ Formerly called Hawai'i E-Charter. First graduating class June 2002.

4/ First graduates reported June 2004.

5/ First graduates reported June 2001.

6/ Formerly called Ni'ihau School of Kekaha. First graduates reported June 2003.

7/ First graduates reported June 2002.

8/ School closed in 2003.

Note: The "going rate" is the percentage of graduates from a given high school entering Leeward Community College in the fall semester immediately following graduation from high school.

SOURCES: IRO Base Table, Census Fall 2005; UH registration system for prior years.

TABLE 6H (cont.)

DISTRICT AND HIGH SCHOOL	Fall 2001		Fall 2002		Fall 2003		Fall 2004		Fall 2005	
	No.	Going Rate	No.	Going Rate	No.	Going Rate	No.	Going Rate	No.	Going Rate
PRIVATE SCHOOLS	14	0.5	34	1.3	18	0.7	15	0.6	19	0.8
O'ahu	10	0.4	25	1.1	1	<0.1	7	0.3	9	0.4
Hanalani 4/			23	74.2						
Hawaiian Mission Academy	1	2.2								
Kamehameha	7	1.6	1	0.2	1	0.2	6	1.4	9	2.0
Maryknoll							1	0.7		
Saint Andrew's Priory	2	6.5								
Saint Francis			1	1.4						
Maui County	4	2.9	9	6.9	17	11.9	8	6.3	9	8.3
Ka'ahumanu Hou Christian	2	11.1			3	25.0	2	25.0	1	33.3
Saint Anthony	2	3.2	7	13.5	12	18.5	6	12.5	8	21.1
Seabury Hall			2	3.3	2	3.2				
Kaua'i									1	3.0
Island School									1	5.0

1/ First graduates reported June 2003.

2/ First graduates reported June 2001.

3/ First graduates reported June 2002.

4/ Number enrolled and going rate may be overstated for Fall 2002; corrected data unavailable.

Note: The "going rate" is the percentage of graduates from a given high school entering Maui Community College in the fall semester immediately following graduation from high school.

SOURCES: IRO Base Table, Census Fall 2005; UH registration system for prior years.

TABLE 6I
NUMBER AND GOING RATE OF HAWAII STATE HIGH SCHOOL GRADUATES
ENTERING WINDWARD COMMUNITY COLLEGE, BY DISTRICT AND SCHOOL
FALL 2001 TO FALL 2005

DISTRICT AND HIGH SCHOOL	Fall 2001		Fall 2002		Fall 2003		Fall 2004		Fall 2005	
	No.	Going Rate	No.	Going Rate	No.	Going Rate	No.	Going Rate	No.	Going Rate
TOTAL	208	1.6	209	1.6	211	1.6	209	1.6	240	1.8
PUBLIC SCHOOLS	171	1.7	172	1.6	178	1.7	183	1.7	180	1.7
O'ahu, Regular	168	2.5	169	2.4	172	2.6	179	2.6	179	2.6
Honolulu	4	0.2	10	0.5	3	0.2	10	0.5	4	0.2
Anuenue									1	16.7
Education Laboratory PCS 1/			1	2.1			1	2.0		
Farrington	2	0.5	2	0.4			2	0.4		
Halau Lokahi Charter 2/							1	16.7		
Kaimuki					1	0.4	1	0.4		
Kaiser			2	0.7			1	0.4	1	0.4
Kalani					1	0.4				
McKinley			2	0.5			1	0.3		
Myron B. Thompson Acad PCS 3/									2	7.4
Roosevelt	2	0.7	3	0.9	1	0.3	3	0.9		
Leeward	1	<0.1	2	0.1	2	0.1	3	0.1	11	0.3
Central			2	0.1	2	0.1	2	0.1	9	0.5
Aiea									3	1.1
Mililani									4	0.7
Moanalua			2	0.5	2	0.4	1	0.2	1	0.2
Radford							1	0.4	1	0.4
Leeward	1	0.1					1	<0.1	2	0.1
Kapolei 4/							1	0.3		
Pearl City	1	0.2							1	0.2
Waipahu									1	0.2
Windward	163	14.9	157	14.5	167	16.4	166	15.3	164	16.2
Castle	79	20.8	69	19.4	86	23.3	81	23.2	89	24.3
Kahuku	17	6.7	18	6.2	24	9.7	18	6.0	18	7.5
Kailua	22	10.0	28	12.1	27	12.3	26	12.9	28	13.1
Kalaheo	45	18.8	42	20.3	30	16.7	40	17.2	29	15.3
Ke Kula 'O Sam M. Kamakau PCS 2/							1	25.0		
Neighbor Islands	3	0.1	3	0.1	6	0.2	4	0.1		
Hawaii'i	1	0.1	3	0.2	1	0.1	1	0.1		
Honoka'a					1	0.9				
Kealahou 5/	1	0.4	3	1.3			1	0.4		
Maui County	1	0.1			4	0.3	2	0.2		
Baldwin	1	0.3			2	0.6	1	0.3		
Lahaina Luna					1	0.6				
Maui					1	0.3	1	0.3		
Kaua'i	1	0.1			1	0.2	1	0.1		
Kapa'a					1	0.4				
Kaua'i	1	0.4								
Ke Kula Ni'ihau 'O Kekaha PCS 2/							1	50.0		
Unknown / Miscoded									1	NA
PRIVATE SCHOOLS	37	1.4	37	1.4	33	1.3	26	1.0	60	2.4
O'ahu	37	1.6	35	1.5	33	1.5	26	1.2	60	2.7
Academy of the Pacific	2	6.3			2	3.9	1	3.3	3	7.3
ASSETS School			1	6.7	1	5.0				
Damien	3	3.1	3	3.6	5	6.2	1	1.1	4	4.3
Hawaii'i Baptist Academy	1	1.0			2	2.0	2	2.1		
Hawaiian Mission Academy	1	2.2	1	3.1						

TABLE 6I (cont.)

DISTRICT AND HIGH SCHOOL	Fall 2001		Fall 2002		Fall 2003		Fall 2004		Fall 2005	
	No.	Going Rate	No.	Going Rate	No.	Going Rate	No.	Going Rate	No.	Going Rate
Honolulu Waldorf School			1	5.9	1	11.1				
Iolani					1	0.5				
Kailua Christian Academy	2	40.0			1	12.5			1	33.3
Kamehameha	8	1.9	14	3.2	8	1.8	11	2.5	22	5.0
Koolau Baptist	1	14.3	2	33.3	1	50.0			6	50.0
Lutheran High School of Hawai'i	3	8.6			1	3.6	3	9.1		
Maryknoll			2	1.5	1	0.8	1	0.7	2	1.4
Mid-Pacific Institute			3	1.6			1	0.6		
Punahou									4	0.9
Redemption Academy	2	33.3	2	20.0	3	50.0			5	38.5
Sacred Hearts Academy	2	1.7	3	2.5	1	0.8	1	0.8	4	3.4
Saint Andrew's Priory	1	3.2			1	3.2				
Saint Francis	2	2.5	1	1.4			3	5.2	3	3.9
Saint Louis	6	4.2	2	1.2	4	2.9	2	1.5	5	4.3
Varsity 6/	3	10.7								
Word of Life 4/									1	4.3
Hawai'i			1	0.6						
Hawai'i Prep Academy			1	1.2						
Unknown / Miscoded			1	NA						

1/ University Lab School became the Education Lab Public Charter School in August 2002.

2/ First graduates reported June 2003.

3/ Formerly called Hawai'i E-Charter. First graduating class June 2002.

4/ First graduates reported June 2004.

5/ First graduates reported June 2001.

6/ School closed in 2003.

Note: The "going rate" is the percentage of graduates from a given high school entering Windward Community College in the fall semester immediately following graduation from high school.

SOURCES: IRO Base Table, Census Fall 2005; UH registration system for prior years.

APPENDIX 1
 JUNE HAWAII HIGH SCHOOL GRADUATES
 BY HIGH SCHOOL DISTRICT AND HIGH SCHOOL
 JUNE 2002 TO JUNE 2006

DISTRICT AND SCHOOL	JUNE 2002	JUNE 2003	JUNE 2004	JUNE 2005	JUNE 2006
TOTAL	13,368	12,840	13,212	13,379	13,379
PUBLIC SCHOOLS	10,771	10,312	10,657	10,852	10,852
O'ahu, Regular	6,905	6,668	6,966	6,961	6,961
Honolulu	2,047	1,848	1,918	1,910	1,910
Anuenue	6	10	10	6	6
Education Laboratory PCS 1/	47	40	49	50	50
Farrington	464	433	481	454	454
Halau Ku Mana PCS 2/		6	1	1	1
Halau Lokahi PCS 2/		2	6	8	8
Kaimuki	262	242	230	241	241
Kaiser	288	252	238	233	233
Kalani	247	237	214	260	260
McKinley	390	312	330	324	324
Myron B. Thompson Academy PCS 3/	6	15	26	27	27
Roosevelt	337	299	333	306	306
Leeward	3,773	3,802	3,961	4,039	4,039
Central	1,955	1,962	1,901	1,978	1,978
Aiea	327	315	285	261	261
Leilehua	364	369	355	337	337
Mililani	467	462	448	553	553
Moanalua	409	468	425	453	453
Radford	286	261	280	280	280
Waialua	102	87	108	94	94
Leeward	1,818	1,840	2,060	2,061	2,061
Campbell	455	477	375	376	376
Kapolei 4/			329	352	352
Nanakuli	182	131	147	141	141
Pearl City	356	405	414	453	453
Wai'anae	364	360	351	301	301
Waipahu	461	467	444	438	438
Windward	1,085	1,018	1,087	1,012	1,012
Castle	355	369	349	367	367
Kahuku	291	247	299	241	241
Kailua	232	220	202	214	214
Kalaheo	207	180	233	190	190
Ke Kula 'O Samuel M. Kamakau PCS 2/		2	4		
O'ahu, Special	16	11	10	2	2
Hawaii Center for Deaf & Blind	10	10	7	2	2
Olomana	6	1	3		
Neighbor Islands	3,850	3,633	3,681	3,889	3,889
Hawaii	1,745	1,608	1,676	1,705	1,705
Connections PCS 5/	2				
Hawaii Acad of Arts & Sci PCS 6/	6	12	15	20	20
Hilo	380	328	306	323	323
Honoka'a	142	108	144	161	161
Kanu O Ka 'Aina PCS 7/	7	8	11	4	4
Ka'u	82	64	67	62	62
Ke Ana La'ahana PCS 8/	4	3	13	10	10
Kea'au 2/		192	156	168	168
Kealakehe 7/	239	271	286	265	265
Kohala	70	73	73	65	65

APPENDIX 1 (cont.)

DISTRICT AND SCHOOL	JUNE 2002	JUNE 2003	JUNE 2004	JUNE 2005	JUNE 2006
Kona Waena	191	141	153	168	168
Laupahoehoe	17	22	16	22	22
Pahoa	139	106	101	133	133
Waiakea	446	270	326	287	287
Waters of Life PCS 7/			3	8	8
West HI Explorations Academy PCS 7/	20	10	6	9	9
Maui County	1,402	1,376	1,331	1,482	1,482
Baldwin	366	346	345	408	408
Hana	29	20	23	32	32
Kihei Public Charter 8/	5	10	10	10	10
King Kekaulike	308	320	283	317	317
Lahainaluna	182	180	210	242	242
Lana'i	50	44	50	44	44
Maui	360	339	300	326	326
Moloka'i	102	117	110	103	103
Kaua'i	703	649	674	702	702
Kanuikapono Charter School 9/				2	2
Kapa'a	244	248	242	218	218
Kaua'i	262	226	247	288	288
Ke Kula Ni'i'hau 'O Kekaha PCS 2/		3	2		
Ni'i'hau	5	3	3	6	6
Kula Aupuni Ni'i'hau A Kahelelani Aloha 10/ ...		1	3	3	3
Waimea	192	168	177	185	185
PRIVATE SCHOOLS	2,597	2,528	2,555	2,527	2,527
O'ahu	2,274	2,210	2,223	2,235	2,235
Academy of the Pacific	34	51	30	41	41
ASSETS School	15	20	23	21	21
Christian Academy 8/	2	5	5	8	8
Damien 11/	84	81	105	94	94
Friendship Christian	3	5	1	2	2
Hale O Ulu School 12/	17				
Hanalani	31	29	27	18	18
Hawai'i Baptist Academy	101	101	95	101	101
Hawaiian Mission Academy	32	29	32	41	41
Ho'ala School		12	4	6	6
Honolulu Waldorf School	17	9	21	19	19
Iolani	235	215	237	223	223
Kailua Christian Academy	9	8	3	3	3
Kamehameha	439	442	433	443	443
Koolau Baptist	6	2	4	12	12
La Pietra	31	34	34	27	27
Lanakila Baptist	12	19	19	23	23
Lutheran High School of Hawai'i	36	28	33	23	23
Maile Bible	2	6	3	7	7
Maryknoll	132	131	134	141	141
Mid-Pacific Institute	182	174	174	184	184
Punahou	424	418	416	422	422
Redemption Academy	10	6	6	13	13
Sacred Hearts Academy	118	125	122	119	119
Saint Andrew's Priory	38	31	43	28	28
Saint Francis	70	90	58	76	76
Saint Louis	168	139	130	117	117
Varsity 13/	26				
Word of Life Academy 4/			31	23	23

APPENDIX 1 (cont.)

DISTRICT AND SCHOOL	JUNE 2002	JUNE 2003	JUNE 2004	JUNE 2005	JUNE 2006
Hawai'i	171	147	163	150	150
Christian Liberty	5	10	9	7	7
Haili Christian School 14/				4	4
Hawai'i Prep Academy	83	77	77	76	76
Makua Lani Christian	13	6	10	10	10
Parker	23	23	24	16	16
Saint Joseph	47	31	43	37	37
Maui County	130	143	126	109	109
Ka'ahumanu Hou Christian	16	12	8	3	3
Molokai Christian Acad	1	3	2	5	5
Saint Anthony	52	65	48	38	38
Seabury Hall	61	63	68	63	63
Kaua'i	22	28	43	33	33
Island School	10	13	24	20	20
Kahili Adventist School	5	4	5	3	3
Kaua'i Christian Academy 11/			2		
Kula High School	7	11	12	10	10

1/ University Lab School became the Education Lab Public Charter School in August 2002.

2/ First graduates reported in June 2003.

3/ Formerly called Hawai'i E-Charter. First graduating class June 2002.

4/ First graduating class June 2004.

5/ No longer offers high school grade levels. Graduates reported for June 2002 only.

6/ First graduating class June 2002. Graduate counts for June 2003 & June 2004 revised.

7/ First graduating class June 2001.

8/ First graduating class June 2002.

9/ Formerly called Ipu Ha'a Academy of Natural Sciences. First graduates reported June 2005.

10/ Formerly called Ni'ihau School of Kekaha. First graduates reported June 2003.

11/ Graduate counts for June 2004 revised.

12/ Graduates no longer counted, effective June 2003.

13/ School closed; graduate count for June 2003 unavailable.

14/ First graduating class June 2005.

SOURCE: Department of Education, State of Hawai'i; Administrative offices of private high schools.

APPENDIX 2
 JUNE HAWAII' I HIGH SCHOOL GRADUATES, BY ISLAND
 AND BY PUBLIC AND PRIVATE HIGH SCHOOL
 JUNE 1995 TO JUNE 2005

June	Total	O'ahu	Hawaii'i	Maui	Kaua'i	Public	O'ahu	Hawaii'i	Maui	Kaua'i	Private	O'ahu	Hawaii'i	Maui	Kaua'i
1995	12,434	8,810	1,766	1,221	637	9,984	6,663	1,615	1,073	633	2,450	2,147	151	148	4
1996	12,482	8,781	1,755	1,224	722	9,995	6,597	1,577	1,099	722	2,487	2,184	178	125	0
1997	12,312	8,648	1,727	1,247	690	9,784	6,429	1,561	1,114	680	2,528	2,219	166	133	10
1998	12,915	9,049	1,841	1,320	705	10,369	6,814	1,673	1,187	695	2,546	2,235	168	133	10
1999	13,017	9,113	1,789	1,404	711	10,425	6,817	1,628	1,271	709	2,592	2,296	161	133	2
2000	13,380	9,268	1,925	1,458	729	10,671	6,879	1,762	1,332	698	2,709	2,389	163	126	31
2001	12,933	8,875	1,829	1,493	736	10,330	6,601	1,661	1,355	713	2,603	2,274	168	138	23
2002	13,368	9,195	1,916	1,532	725	10,771	6,921	1,745	1,402	703	2,597	2,274	171	130	22
2003	12,840	8,889	1,755	1,519	677	10,312	6,679	1,608	1,376	649	2,528	2,210	147	143	28
2004	13,212	9,199	1,839	1,457	717	10,657	6,976	1,676	1,331	674	2,555	2,223	163	126	43
2005	13,379	9,198	1,855	1,591	735	10,852	6,963	1,705	1,482	702	2,527	2,235	150	109	33

June	Total	O'ahu	Hawaii'i	Maui	Kaua'i	Public	O'ahu	Hawaii'i	Maui	Kaua'i	Private	O'ahu	Hawaii'i	Maui	Kaua'i
1995	100.0	70.9	14.2	9.8	5.1	80.3	53.6	13.0	8.6	5.1	19.7	17.3	1.2	1.2	<0.1
1996	100.0	70.3	14.1	9.8	5.8	80.1	52.9	12.6	8.8	5.8	19.9	17.5	1.4	1.0	0.0
1997	100.0	70.3	14.0	10.1	5.6	79.5	52.2	12.7	9.0	5.5	20.5	18.0	1.3	1.1	0.1
1998	100.0	70.0	14.3	10.2	5.5	80.3	52.8	13.0	9.2	5.4	19.7	17.3	1.3	1.0	0.1
1999	100.0	70.0	13.7	10.8	5.5	80.1	52.4	12.5	9.8	5.4	19.9	17.6	1.2	1.0	<0.1
2000	100.0	69.3	14.4	10.9	5.4	79.8	51.4	13.2	10.0	5.2	20.2	17.9	1.2	0.9	0.2
2001	100.0	68.6	14.1	11.6	5.7	79.9	51.0	12.8	10.5	5.5	20.1	17.6	1.3	1.1	0.2
2002	100.0	68.8	14.3	11.5	5.4	80.6	51.8	13.1	10.5	5.3	19.4	17.0	1.3	1.0	0.2
2003	100.0	69.2	13.7	11.8	5.3	80.3	52.0	12.5	10.7	5.1	19.7	17.2	1.1	1.1	0.2
2004	100.0	69.6	13.9	11.1	5.4	80.7	52.8	12.7	10.1	5.1	19.3	16.8	1.2	1.0	0.3
2005	100.0	68.7	13.9	11.9	5.5	81.1	52.0	12.7	11.1	5.2	18.9	16.7	1.1	0.8	0.2

Note: Data for Maui include Lana'i and Moloka'i.

Note: Percentages calculated using the Total as the denominator for all calculations.