

**MULTIPLE REGISTRANTS ACROSS
THE UNIVERSITY OF HAWAI‘I SYSTEM
FALL 2009**

Institutional Research Office
University of Hawai‘i
November 2010

File Reference: Management and Planning Support Folder, Students
Reports On-line at: www.hawaii.edu/iro

UNIVERSITY OF HAWAI'I
FALL ENROLLMENT REPORT
FALL 2009

TABLE OF CONTENTS

Narrative

Multiple Registrants

Graphs

Figure 1 UH System Headcounts – Duplicated and Unduplicated

Figure 2 Multiple Registrants Across the UH System

Figure 3 Multiple Registrants per UH Campus – Fall 2009

Figure 4 Student Not Registered at their Home Campuses

Tables

Table 1 Unduplicated Headcount Across the UH System

Table 1A Unduplicated Headcount Across the UH System Fall 2009

Table 2 Unduplicated Headcount by UH Campus, Duplicated Across the UH System
Fall 2009

Table 3 Distribution of Multiple Registrants Across UH Campuses Counted By
Number of Enrollments, University of Hawai'i Fall 2009

Table 3A Distribution of Multiple Registrants Across UH Campuses Counted By
Percent of Multiple Registrants, University of Hawai'i Fall 2009

Table 4 Students Not Enrolled At Their Home-Campuses, University of Hawai'i

Table 4A Students Not Enrolled At Their Home-Campuses, University of Hawai'i Fall
2009

MULTIPLE REGISTRANTS
STUDENTS ENROLLED AT MORE THAN ONE CAMPUS
UNIVERSITY OF HAWAI'I
FALL 2009

INTRODUCTION

The purpose of this report is to highlight the enrollment patterns of students registered at more than one campus in the University of Hawai'i system. The accompanying tables provide summary information on multiple registrants for the fall semesters from Fall 2003 to Fall 2009. Detailed tables showing enrollment patterns across campuses are provided for the Fall 2009 semester.

TABLES

Table 1 shows historical data for the fall semesters from Fall 2003 to Fall 2009. Students are grouped by the number of campuses at which they are enrolled for each semester. Each student is counted only once, and the total for each semester equals the unduplicated headcount for the UH system.

Table 1A shows enrollment by UH campus for Fall 2009, with each student counted only once across the UH system. A student enrolled at only one campus is counted at the campus at which enrolled, regardless of whether or not that campus is the student's home campus. A student enrolled at more than one campus, and who is also enrolled at his / her home-campus, is counted at the home campus. Note that there were 147 multiple registrants who were not enrolled at their home campuses.

Table 2 shows enrollment by UH campus for Fall 2009, with students counted at every campus at which enrolled. These counts are unduplicated for each campus, but duplicated across the UH system. The headcounts for the campuses tie to the official census enrollment.

Table 3 provides information about the enrollment distribution of multiple registrants across the UH campuses. The counts for the "At Main Campus" column tie to those shown in Table 2 for the "Multiple Registrants" column; these are headcounts of multiple registrants at the main campus. The remaining columns show the other UH campuses where these students are enrolled; the Subtotal is multiple-counted. The Total System count is the sum of these two figures, and is also multiple-counted. For example, there were 1,371 students enrolled at UH Mānoa and also registered at one other UH campus, for a total of $1,371 * 2 = 2,742$ enrollments across the UH system. For students enrolled at two other campuses, the total enrollment count = $107 * 3 = 321$: 107 students enrolled at UH Mānoa, and $107 * 2 = 214$ enrollments at other campuses. Similarly, there were 8 students enrolled at four campuses, including UH Mānoa, for a total of $4 * 8 = 32$ enrollments for the system. Table 3A gives the percentage distribution of these multiple registrants across the UH system, by UH campus.

Table 4 provides information on students who were not enrolled at their home-campuses, but who were registered at one or more campuses in the UH system. Table 4A provides additional detail on these enrollments for the Fall 2009 semester.

ANALYSIS

In Fall 2009, 3,892 students were enrolled at more than one UH campus (Table 1). This figure represents 7.3% of the total unduplicated student population for the UH system. The percentage of multiple registrants measured 3.8% in Fall 2003 (the first semester in which all campuses in the UH system had implemented the Banner registration system), and has increased slowly every semester. The vast majority of multiple registrants were enrolled at two campuses, with a few students enrolled in as many as five campuses.

For Fall 2009, UH-West O'ahu had the highest percentage of multiple registrants as a percentage of total campus enrollment, at 29.8% (Table 2). Kapi'olani CC was second at 23.5% of enrollment. With the exception of Maui CC, all the UH Community Colleges had double-digit rates for multiple registrants. UH Mānoa had a rate of 7.3%, while UH Hilo had a rate of 5.9%. These rates are slightly higher than the previous fall semester.

Tables 3 and 3A show the enrollment patterns by campus for multiple registrants. Perhaps not surprising is that students tend to enroll at other campuses within the same geographic area. For example, multiple registrants at UH Mānoa are concurrently enrolled primarily at Honolulu CC, Kapi'olani and Leeward CC. Similarly, multiple registrants at UH Hilo are concurrently enrolled primarily at Hawai'i CC, while most multiple registrants at UH-West O'ahu are enrolled at Leeward CC.

Kapi'olani CC had the largest number of multiple registrants concurrently enrolled at the four year campuses, with 883 students also enrolled at UH Mānoa (790 at UH Mānoa only, 86 at UH Mānoa and one other campus and 7 at UH Mānoa and two other campuses). Hawai'i CC had the most students also enrolled at UH Hilo (172), while Leeward CC had the most students also enrolled at UH-West O'ahu (271).

Although many students are enrolled at both a UH Community College and a UH four-year campus, the number of students registered at more than one UH Community College is much larger. Note that of the 1,875 students enrolled at Kapi'olani CC and one other campus, the majority were enrolled at another UHCC campus. The same pattern holds true for most of the other UHCC campuses as well.

For Fall 2009, there were 1,291 students who were not enrolled at their home-campuses, but who were registered at some other campus in the UH system. This figure represents 2.4% of the total UH system unduplicated headcount (Table 4). The percentage appears to be fairly stable over time. The vast majority of these students were home-based at the UH Community Colleges and enrolled at only one UH campus (Table 4A).

Multiple Registrants Across the UH System

Figure 1

UH System Headcounts – Duplicated and Unduplicated

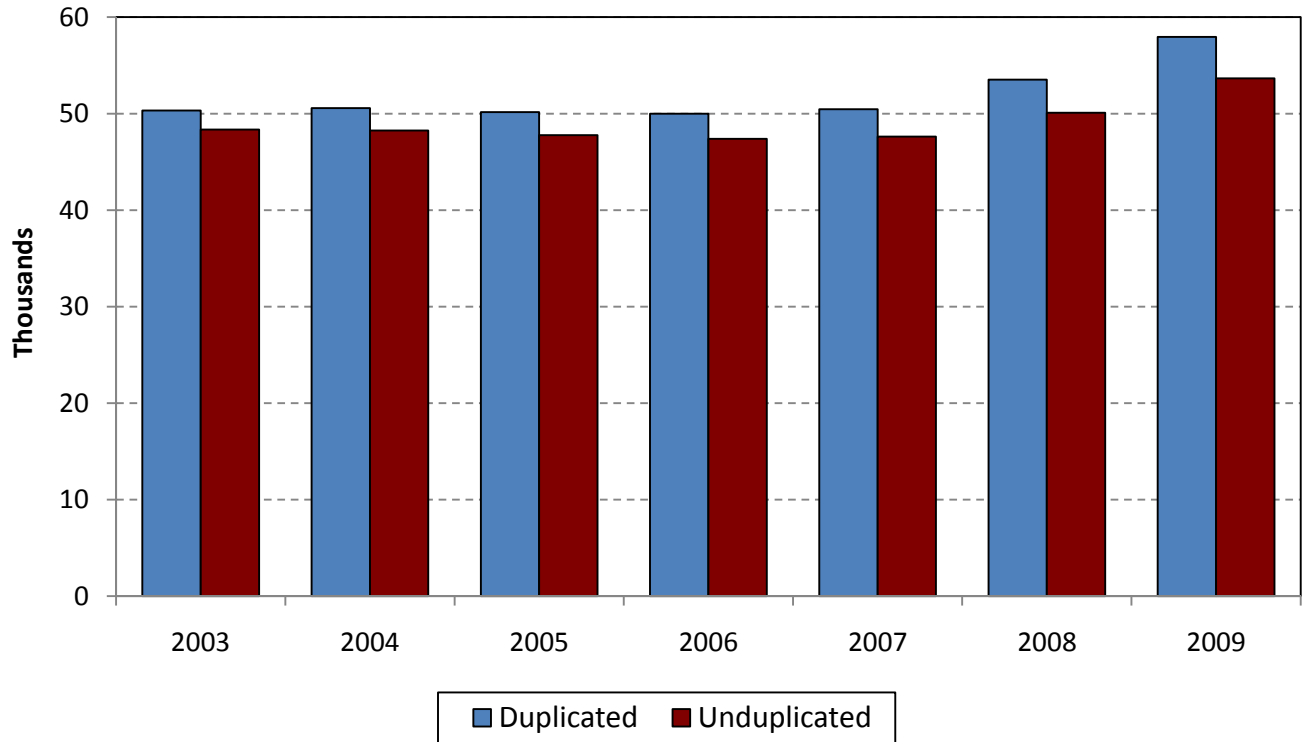
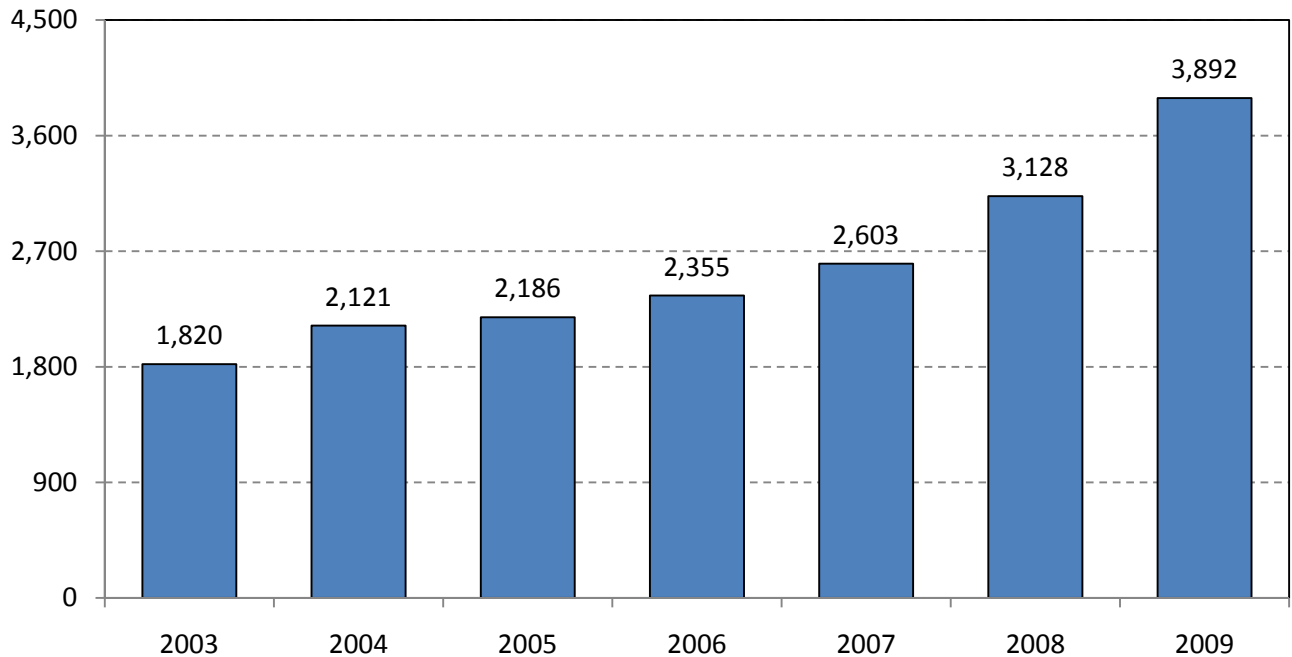


Figure 2

Multiple Registrants Across the UH System



Unduplicated count of students enrolled at more than one UH campus.

Multiple Registrants Across the UH System

Figure 3
Multiple Registrants per UH Campus – Fall 2009

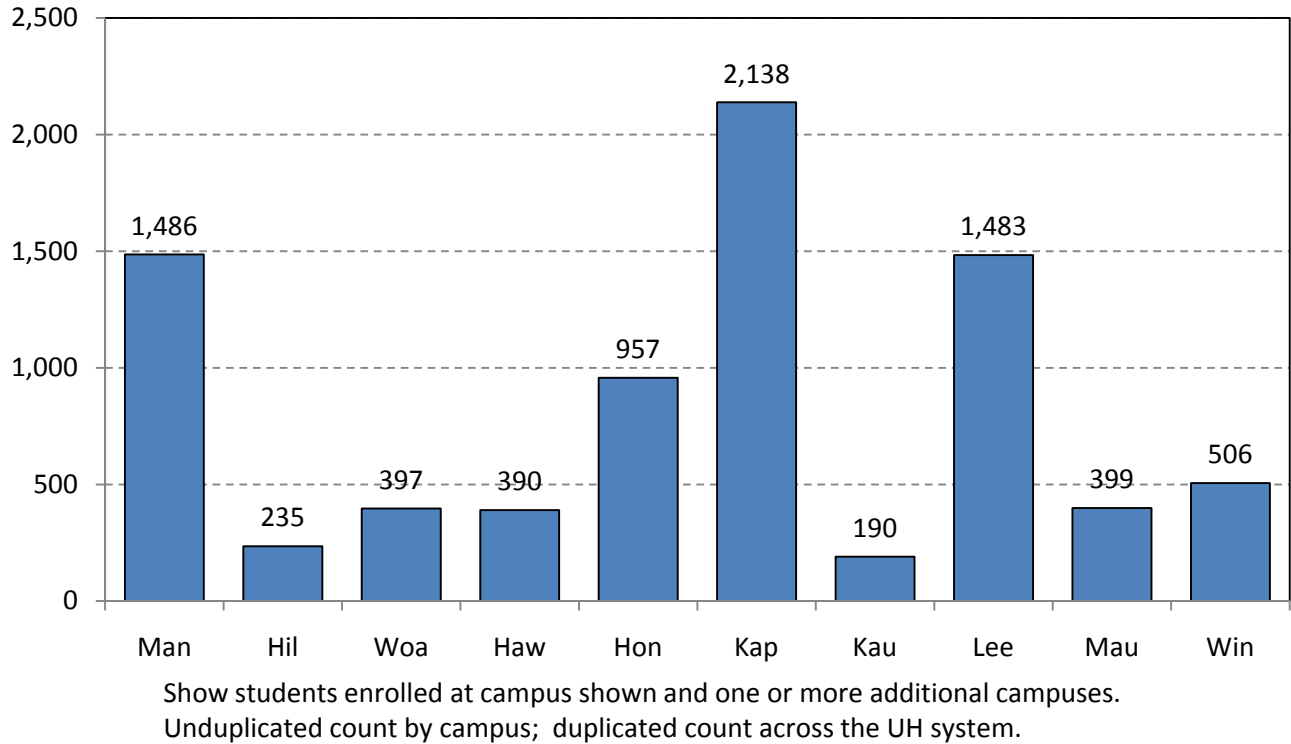


Figure 4
Student Not Registered at their Home Campuses

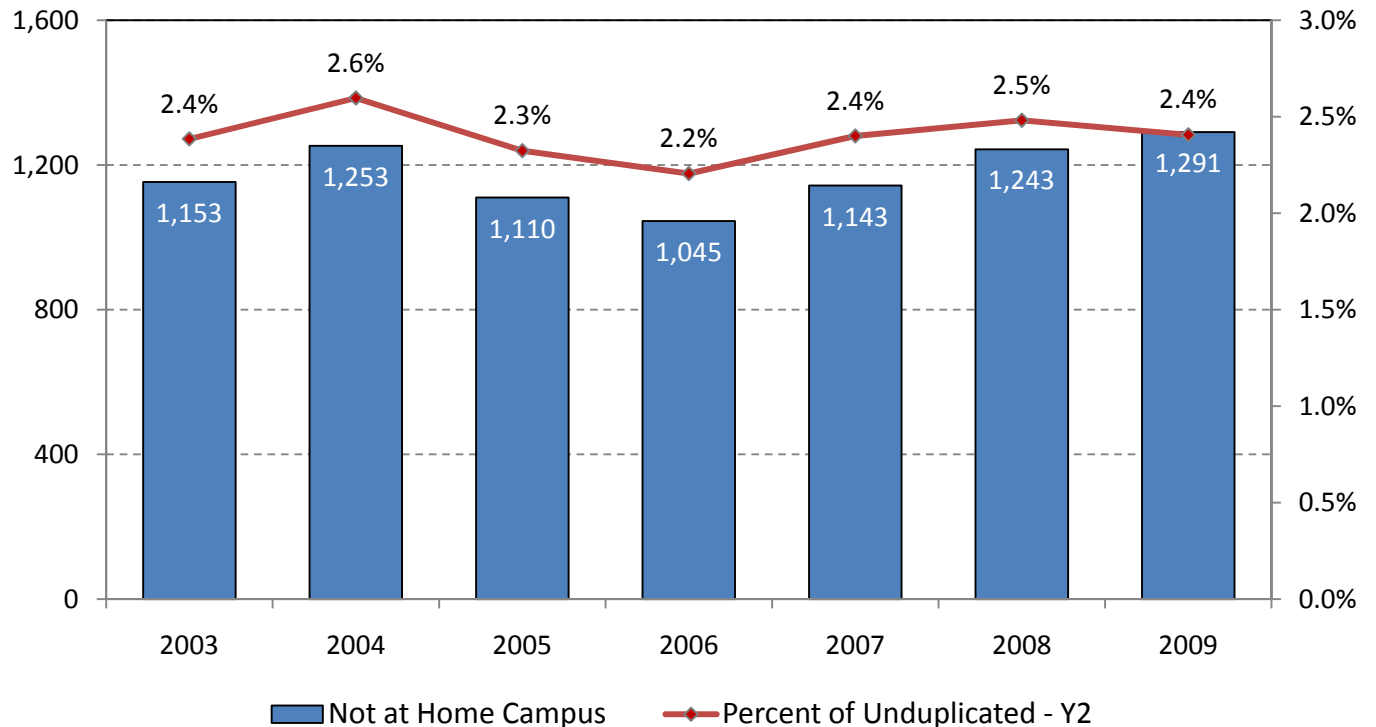


TABLE 1
MULTIPLE REGISTRANTS
UNIVERSITY OF HAWAII
(Unduplicated Headcount Across the UH System)

Fall Semester	Total Unduplicated Headcount	Students Enrolled at Only 1 Campus		Multiple Registrants		Number of Campuses at Which Students Are Enrolled							
		No.	H%	Subt	H%	Two		Three		Four		Five	
						No.	H%	No.	H%	No.	H%	No.	H%
Fall 2009	53,656	49,764	92.8	3,892	7.3	3,525	6.6	339	0.6	26	<0.1	2	<0.1
Fall 2008	50,090	46,962	93.8	3,128	6.2	2,841	5.7	268	0.5	17	<0.1	2	<0.1
Fall 2007	47,621	45,018	94.5	2,603	5.5	2,389	5.0	199	0.4	14	<0.1	1	<0.1
Fall 2006	47,391	45,036	95.0	2,355	5.0	2,136	4.5	197	0.4	19	<0.1	3	<0.1
Fall 2005	47,763	45,577	95.4	2,186	4.6	1,994	4.2	177	0.4	14	<0.1	1	<0.1
Fall 2004	48,246	46,125	95.6	2,121	4.4	1,940	4.0	162	0.3	17	<0.1	2	<0.1
Fall 2003	48,347	46,527	96.2	1,820	3.8	1,683	3.5	124	0.3	13	<0.1		

Note: System unduplicated headcount = Students Enrolled at Only 1 Campus + subtotal Multiple Registrants.

This table counts each student only once for the University of Hawai'i system.

Source: Banner Datamart / ODS; Census data.

TABLE 1A
MULTIPLE REGISTRANTS ACROSS THE UH SYSTEM
UNIVERSITY OF HAWAI'I
(Unduplicated Headcount Across the UH System)
FALL 2009

Campus at Which Students are Enrolled and / or Home-Based	UH System Unduplicated Headcount	Students Enrolled at Only 1 Campus ¹		Multiple Registrants		Number of Campuses at Which Students Are Enrolled ²							
		No.	H%	Subt	H%	Two		Three		Four		Five	
						No.	H%	No.	H%	No.	H%	No.	H%
UH System	53,656	49,764	92.8	3,892	7.3	3,525	6.6	339	0.6	26	<0.1	2	<0.1
UH Mānoa	20,396	18,949	92.9	1,447	7.1	1,335	6.6	104	0.5	8	<0.1		
UH Hilo	3,939	3,739	94.9	200	5.1	181	4.6	16	0.4	3	0.1		
UH-West O'ahu	1,306	936	71.7	370	28.3	346	26.5	24	1.8				
Hawai'i CC	3,008	2,885	95.9	123	4.1	105	3.5	18	0.6				
Honolulu CC	3,814	3,610	94.7	204	5.4	191	5.0	13	0.3				
Kapi'olani CC	7,527	6,964	92.5	563	7.5	539	7.2	23	0.3	1	<0.1		
Kaua'i CC	1,297	1,155	89.1	142	11.0	106	8.2	32	2.5	3	0.2	1	0.1
Leeward CC	6,319	6,001	95.0	318	5.0	294	4.7	24	0.4				
Maui CC	3,892	3,715	95.5	177	4.6	138	3.6	32	0.8	7	0.2		
Windward CC	2,011	1,810	90.0	201	10.0	160	8.0	37	1.8	3	0.2	1	<0.1
Not Home-Based ³	147			147	100.0	130	88.4	16	10.9	1	0.7		

Note: The total headcount for the UH system is unduplicated: i.e. students are counted only once.

¹ A student enrolled at only one campus is counted where registered, even if the campus is not the home-campus of the student.

² A student enrolled at more than one campus, and who is also enrolled at his / her home-campus, is counted at the home campus.

³ Students enrolled at more than one campus, none of which is the home-campus of the student (multiple registrants only).

Source: IRO Base, Fall 2009 Census.

TABLE 2
MULTIPLE REGISTRANTS BY CAMPUS AT WHICH ENROLLED
UNIVERSITY OF HAWAII
 (Unduplicated Headcount by UH Campus, Duplicated Across the UH System)
 FALL 2009

Campus at Which Students Are Enrolled	Total Duplicated Headcount ¹	Students Enrolled at Only 1 Campus ²		Multiple Registrants		Number of Campuses at Which Students Are Enrolled ³							
		No.	H%	Subt	H%	Two		Three		Four		Five	
						No.	H%	No.	H%	No.	H%	No.	H%
UH System	57,945	49,764	85.9	8,181	14.1	7,050	12.2	1,017	1.8	104	0.2	10	<0.1
UH Mānoa	20,435	18,949	92.7	1,486	7.3	1,371	6.7	107	0.5	8	<0.1		
UH Hilo	3,974	3,739	94.1	235	5.9	214	5.4	18	0.5	3	0.1		
UH-West O'ahu	1,333	936	70.2	397	29.8	367	27.5	29	2.2	1	0.1		
Hawai'i CC	3,275	2,885	88.1	390	11.9	326	10.0	56	1.7	8	0.2		
Honolulu CC	4,567	3,610	79.1	957	21.0	785	17.2	154	3.4	16	0.4	2	<0.1
Kapi'olani CC	9,102	6,964	76.5	2,138	23.5	1,875	20.6	238	2.6	23	0.3	2	<0.1
Kaua'i CC	1,345	1,155	85.9	190	14.1	137	10.2	44	3.3	7	0.5	2	0.2
Leeward CC	7,484	6,001	80.2	1,483	19.8	1,261	16.9	201	2.7	20	0.3	1	<0.1
Maui CC	4,114	3,715	90.3	399	9.7	308	7.5	81	2.0	8	0.2	2	<0.1
Windward CC	2,316	1,810	78.2	506	21.9	406	17.5	89	3.8	10	0.4	1	<0.1

¹ The official headcount of the campus. Includes both students enrolled at only one campus plus multiple registrants.

² Students enrolled at one and only one campus. Includes all students enrolled at the campus shown, irregardless of a student's home-campus.

³ Students enrolled at both the campus shown and some other UH campus.

Note: The total headcount for the UH system is duplicated: i.e. students enrolled at more than one campus are multiple counted.

Source: IRO Base, Fall 2009 Census.

TABLE 3
DISTRIBUTION OF MULTIPLE REGISTRANTS ACROSS UH CAMPUSES
COUNTED BY NUMBER OF ENROLLMENTS
UNIVERSITY OF HAWAI'I
FALL 2009

Main UH Campus Enrolling Student	Total At Main System Campus		All Other UH Campuses Where Students Are Enrolled											
			SUBT	MAN	HIL	WOA	HAW	HON	KAP	KAU	LEE	MAU	WIN	
UH Mānoa	3,095	1,486												
Two	2,742	1,371	1,371		7	8	10	117	790	6	297	46	90	
Three	321	107	214			3	4	32	86	1	54	11	23	
Four	32	8	24			1	1	5	7	1	8		1	
UH Hilo	494	235												
Two	428	214	214	7		3	161	1	16	3	12	9	2	
Three	54	18	36			1	8	4	8	2	8	4	1	
Four	12	3	9				3	1	2	1	1	1		
UH-West O'ahu	825	397												
Two	734	367	367	8	3		8	40	19	7	244	26	12	
Three	87	29	58	3	1			12	8	3	26		5	
Four	4	1	3	1					1		1			
Hawai'i CC	852	390												
Two	652	326	326	10	161	8		24	40	14	13	47	9	
Three	168	56	112	4	8			17	25	11	23	17	7	
Four	32	8	24	1	3			4	5	3	4	4		
Honolulu CC	2,106	957												
Two	1,570	785	785	117	1	40	24		332	24	158	21	68	
Three	462	154	308	32	4	12	17		96	18	72	28	29	
Four	64	16	48	5	1		4		13	3	13	3	6	
Five	10	2	8						2	2	1	2	1	
Kapi'olani CC	4,566	2,138												
Two	3,750	1,875	1,875	790	16	19	40	332		31	401	77	169	
Three	714	238	476	86	8	8	25	96		22	126	47	58	
Four	92	23	69	7	2	1	5	13		7	17	7	10	
Five	10	2	8					2		2	1	2	1	
Kaua'i CC	444	190												
Two	274	137	137	6	3	7	14	24	31		29	22	1	
Three	132	44	88	1	2	3	11	18	22		22	8	1	
Four	28	7	21	1	1		3	3	7		2	1	3	
Five	10	2	8					2	2		1	2	1	
Leeward CC	3,210	1,483												
Two	2,522	1,261	1,261	297	12	244	13	158	401	29		56	51	
Three	603	201	402	54	8	26	23	72	126	22		32	39	
Four	80	20	60	8	1	1	4	13	17	2		6	8	
Five	5	1	4					1	1	1		1		

TABLE 3
 DISTRIBUTION OF MULTIPLE REGISTRANTS ACROSS UH CAMPUSES
 COUNTED BY NUMBER OF ENROLLMENTS
 UNIVERSITY OF HAWAI'I
 FALL 2009

Main UH Campus Enrolling Student	Total At Main System Campus		All Other UH Campuses Where Students Are Enrolled												
			SUBT	MAN	HIL	WOA	HAW	HON	KAP	KAU	LEE	MAU	WIN		
Maui CC	901	399													
Two	616	308	308	46	9	26	47	21	77	22	56				4
Three	243	81	162	11	4		17	28	47	8	32				15
Four	32	8	24		1		4	3	7	1	6				2
Five	10	2	8					2	2	2	1				1
Windward CC	1,124	506													
Two	812	406	406	90	2	12	9	68	169	1	51				4
Three	267	89	178	23	1	5	7	29	58	1	39				15
Four	40	10	30	1				6	10	3	8				2
Five	5	1	4					1	1	1					1

This table counts multiple registrants by their distribution across UH campuses. For example, there were 1,371 students enrolled at both UH Mānoa and one other UH campus. Of those students, 7 were enrolled at UH Hilo, 8 at UH-West O'ahu, 10 at Hawai'i CC, and so forth. The total number of enrollments at UH campuses other than UH Mānoa for these students would be 1,371; the total number of enrollments across the UH system for these students (including UH Mānoa) would be twice 1,371 or 2,742.

For students enrolled at three campuses, the total system enrollment is the number at the main campus multiplied by three. For example, of the 56 students enrolled at Hawai'i CC and two other UH campuses, the total number of enrollments at campuses in the UH system other than Hawai'i CC would be $56 * 2 = 112$. The total number of enrollments across the UH system (including Hawai'i CC) for these students would be $112 + 56 = 168$.

Source: IRO Base, Fall 2009 Census.

TABLE 3A
DISTRIBUTION OF MULTIPLE REGISTRANTS ACROSS UH CAMPUSES
COUNTED BY PERCENT OF MULTIPLE REGISTRANTS
UNIVERSITY OF HAWAI'I
FALL 2009

Main UH Campus Enrolling Student	Multiple Registrants		Percent of Multiple Registrants Enrolled at Other UH Campuses									
	No.	H %	MAN	HIL	WOA	HAW	HON	KAP	KAU	LEE	MAU	WIN
UH Mānoa												
Two	1,371	100.0		0.5	0.6	0.7	8.5	57.6	0.4	21.7	3.4	6.6
Three	214	100.0			1.4	1.9	15.0	40.2	0.5	25.2	5.1	10.7
Four	24	100.0			4.2	4.2	20.8	29.2	4.2	33.3		4.2
UH Hilo												
Two	214	100.0	3.3		1.4	75.2	0.5	7.5	1.4	5.6	4.2	0.9
Three	36	100.0			2.8	22.2	11.1	22.2	5.6	22.2	11.1	2.8
Four	9	100.0				33.3	11.1	22.2	11.1	11.1	11.1	
UH-West O'ahu												
Two	367	100.0	2.2	0.8		2.2	10.9	5.2	1.9	66.5	7.1	3.3
Three	58	100.0	5.2	1.7			20.7	13.8	5.2	44.8		8.6
Four	3	100.0	33.3					33.3		33.3		
Hawai'i CC												
Two	326	100.0	3.1	49.4	2.5		7.4	12.3	4.3	4.0	14.4	2.8
Three	112	100.0	3.6	7.1			15.2	22.3	9.8	20.5	15.2	6.3
Four	24	100.0	4.2	12.5			16.7	20.8	12.5	16.7	16.7	
Honolulu CC												
Two	785	100.0	14.9	0.1	5.1	3.1		42.3	3.1	20.1	2.7	8.7
Three	308	100.0	10.4	1.3	3.9	5.5		31.2	5.8	23.4	9.1	9.4
Four	48	100.0	10.4	2.1		8.3		27.1	6.3	27.1	6.3	12.5
Five	8	100.0						25.0	25.0	12.5	25.0	12.5
Kapi'olani CC												
Two	1,875	100.0	42.1	0.9	1.0	2.1	17.7		1.7	21.4	4.1	9.0
Three	476	100.0	18.1	1.7	1.7	5.3	20.2		4.6	26.5	9.9	12.2
Four	69	100.0	10.1	2.9	1.4	7.2	18.8		10.1	24.6	10.1	14.5
Five	8	100.0					25.0		25.0	12.5	25.0	12.5
Kaua'i CC												
Two	137	100.0	4.4	2.2	5.1	10.2	17.5	22.6		21.2	16.1	0.7
Three	88	100.0	1.1	2.3	3.4	12.5	20.5	25.0		25.0	9.1	1.1
Four	21	100.0	4.8	4.8		14.3	14.3	33.3		9.5	4.8	14.3
Five	8	100.0					25.0	25.0		12.5	25.0	12.5
Leeward CC												
Two	1,261	100.0	23.6	1.0	19.3	1.0	12.5	31.8	2.3		4.4	4.0
Three	402	100.0	13.4	2.0	6.5	5.7	17.9	31.3	5.5		8.0	9.7
Four	60	100.0	13.3	1.7	1.7	6.7	21.7	28.3	3.3		10.0	13.3
Five	4	100.0					25.0	25.0	25.0		25.0	

TABLE 3A
DISTRIBUTION OF MULTIPLE REGISTRANTS ACROSS UH CAMPUSES
COUNTED BY PERCENT OF MULTIPLE REGISTRANTS
UNIVERSITY OF HAWAI'I
FALL 2009

Main UH Campus Enrolling Student	Multiple Registrants		Percent of Multiple Registrants Enrolled at Other UH Campuses									
	No.	H %	MAN	HIL	WOA	HAW	HON	KAP	KAU	LEE	MAU	WIN
Maui CC												
Two	308	100.0	14.9	2.9	8.4	15.3	6.8	25.0	7.1	18.2		1.3
Three	162	100.0	6.8	2.5		10.5	17.3	29.0	4.9	19.8		9.3
Four	24	100.0		4.2		16.7	12.5	29.2	4.2	25.0		8.3
Five	8	100.0					25.0	25.0	25.0	12.5		12.5
Windward CC												
Two	406	100.0	22.2	0.5	3.0	2.2	16.7	41.6	0.2	12.6		1.0
Three	178	100.0	12.9	0.6	2.8	3.9	16.3	32.6	0.6	21.9		8.4
Four	30	100.0	3.3				20.0	33.3	10.0	26.7		6.7
Five	4	100.0					25.0	25.0	25.0			25.0

Note: Shows percentage distribution for multiple registrants only; excludes students enrolled at the main campus.

Source: IRO Base, Fall 2009 Census.

TABLE 4
STUDENTS NOT ENROLLED AT THEIR HOME-CAMPUSES
UNIVERSITY OF HAWAI'I

Semester	Unduplicated Headcount	Total Not at Home Campus	Percent of Undup	Home Campus of Student										
				MAN	HIL	WOA	HAW	HON	KAP	KAU	LEE	MAU	WIN	UNKN
Fall 2009	53,656	1,291	2.4	146	54	33	50	215	364	54	232	44	99	
Fall 2008	50,090	1,243	2.5	111	44	32	39	221	350	49	239	61	97	
Fall 2007	47,621	1,143	2.4	126	37	33	34	224	278	53	220	50	84	4
Fall 2006	47,391	1,045	2.2	70	35	1	37	232	287	46	211	41	70	15
Fall 2005	47,763	1,110	2.3	127	22	2	27	218	300	57	216	60	81	
Fall 2004	48,246	1,253	2.6	206	32	15	54	219	323	64	207	48	85	
Fall 2003	48,347	1,153	2.4	254	40	28	58	194	226	55	203	43	51	1

Shows students who were not registered at their home campuses, but were registered at some other campus in the UH system.

Includes both students who were enrolled at only one campus as well as multiple registrants.

"Percent of Unduplicated" shows total students not at home campus divided by total system unduplicated headcount for the semester.

Source: Banner Datamart / ODS; SIMS / Datamart for Fall 2003 and Fall 2004; Census data.

TABLE 4A
STUDENTS NOT ENROLLED AT THEIR HOME-CAMPUSES
UNIVERSITY OF HAWAI'I
FALL 2009

Campus at Which Students Are Home-Based	Headcount by Home Campus ¹	Total Not at Home Campus		Number of Campuses Where Enrolled ²			
		Subt	H%	One	Two	Three	Four
UH System	53,656	1,291	2.4	1,144	130	16	1
UH Mānoa	20,535	146	0.7	136	9	1	
UH Hilo	3,981	54	1.4	44	9	1	
UH-West O'ahu	1,326	33	2.5	27	5	1	
Hawai'i CC	3,020	50	1.7	42	7	1	
Honolulu CC	3,758	215	5.7	195	18	2	
Kapi'olani CC	7,520	364	4.8	334	28	2	
Kaua'i CC	1,340	54	4.0	41	9	4	
Leeward CC	6,272	232	3.7	208	24		
Maui CC	3,887	44	1.1	33	7	3	1
Windward CC	2,017	99	4.9	84	14	1	

Note: The total headcount for the UH system is unduplicated: i.e. students are counted only once.

¹ Headcount by home-campus; shows total for campus, regardless of where students are registered.

² Count by number of campuses attended, for only those students not enrolled at their home-campuses.

Source: IRO Base, Fall 2009 Census.