

**REVENUES AND EXPENDITURES:
PEER AND BENCHMARK COMPARISONS
UNIVERSITY OF HAWAI'I
FISCAL YEAR 1997-98**

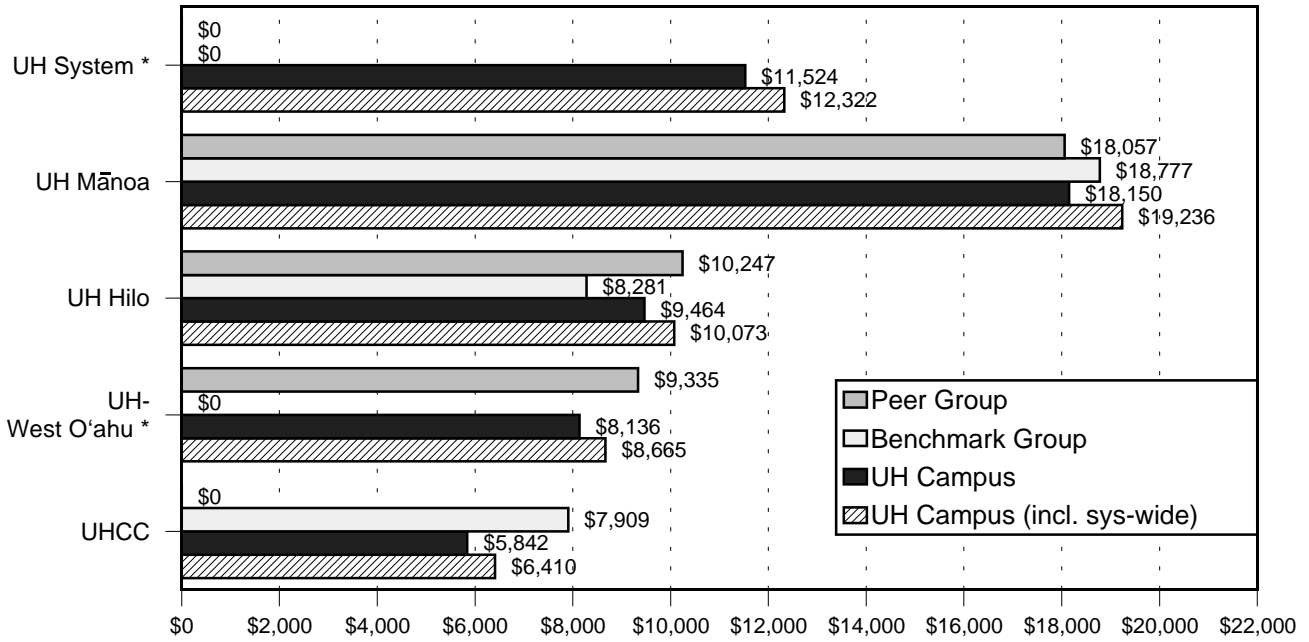
Institutional Research Office
University of Hawai'i
September 2001

File Reference: Management and Planning Support Folder, Finance

Reports available online at: <http://www.hawaii.edu/iro/maps.htm>

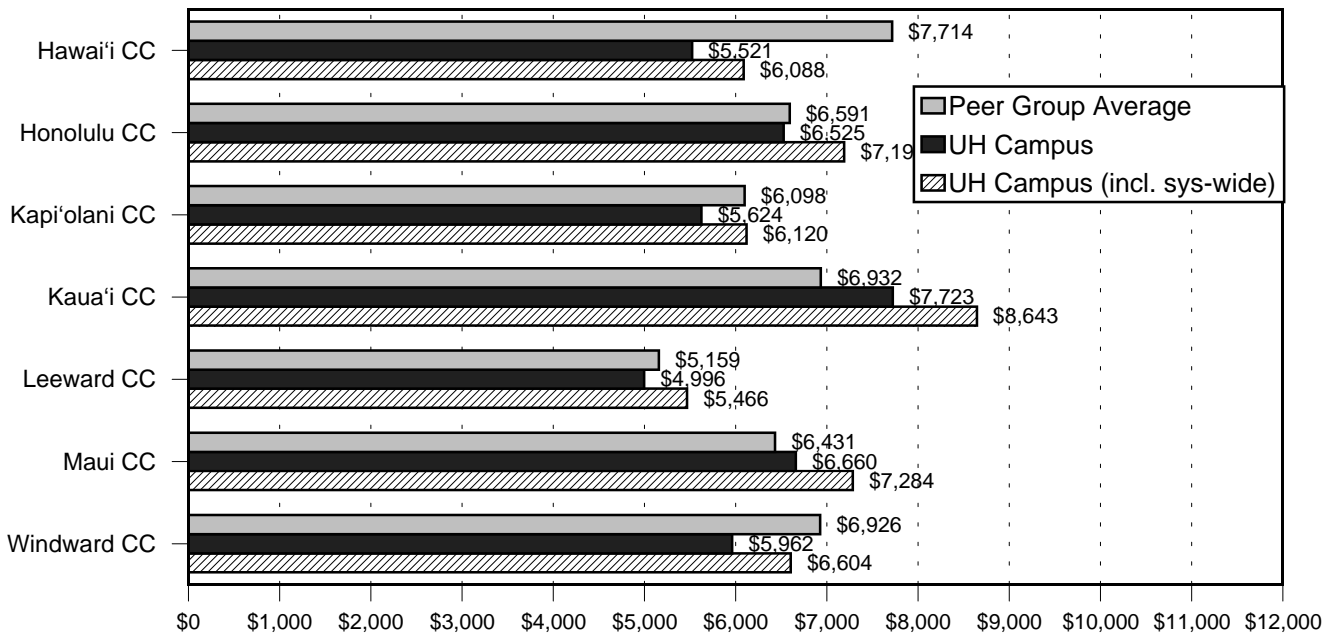
University of Hawai'i Benchmark and Peer Group Comparisons Fiscal Year 1997-98

Figure 1
Total Revenues per FTE Student by Unit



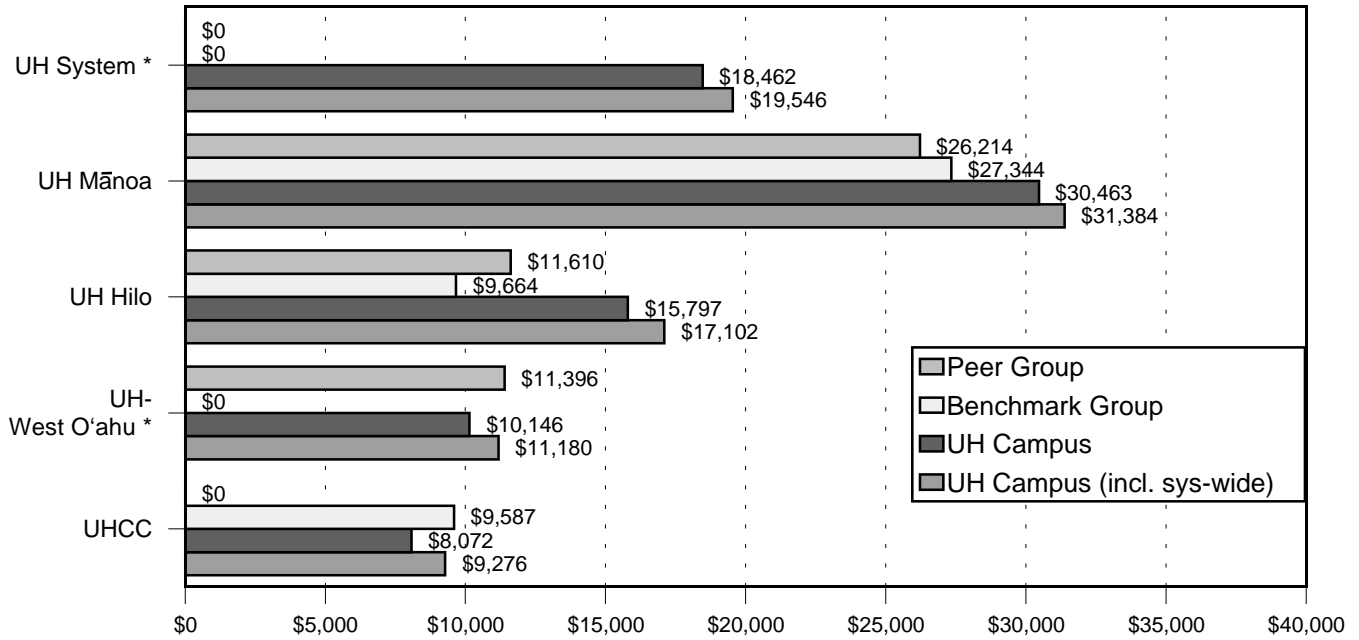
* There are no peer or benchmark groups for UH system. There is no benchmark group for UH-West O'ahu.

Figure 2
Total Revenues per FTE Student by UHCC



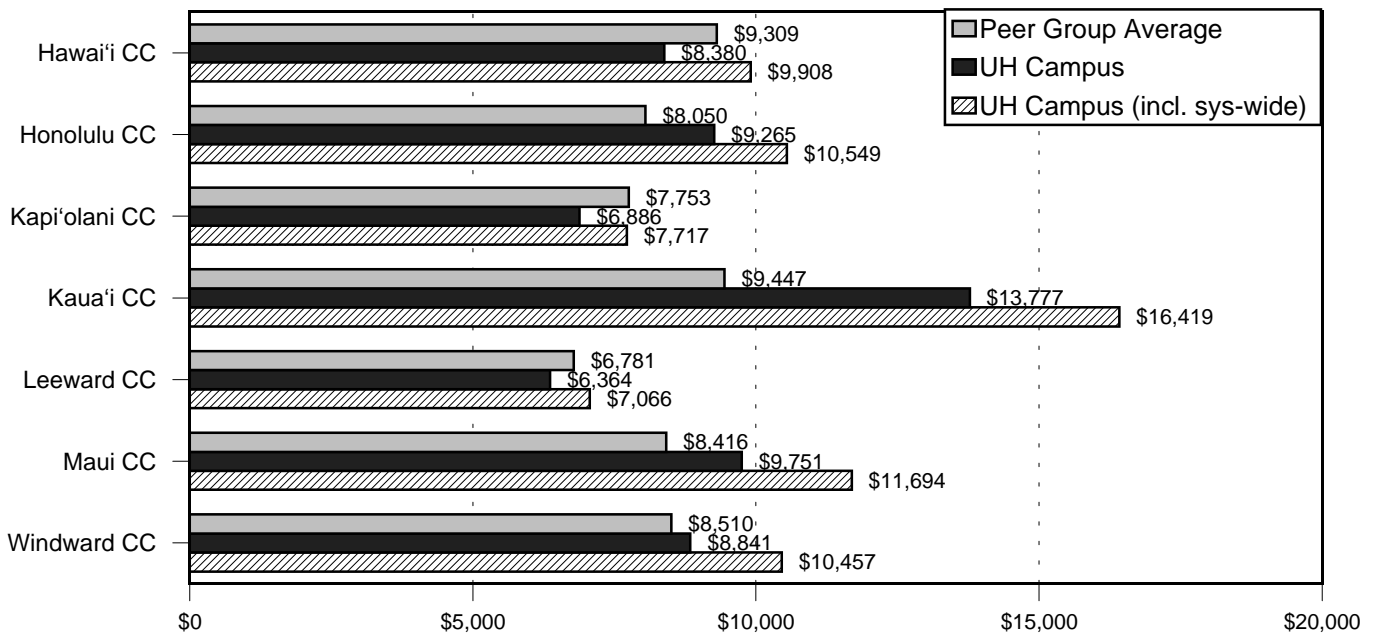
University of Hawai'i
 Benchmark and Peer Group Comparisons
 Fiscal Year 1997-98

Figure 3
 Total Expenditures per FTE Student by Unit



* There are no peer or benchmark groups for UH system. There is no benchmark group for UH-West O'ahu.

Figure 4
 Total Expenditures per FTE Student by UHCC



University of Hawai'i
 Benchmark and Peer Group Comparisons
 Fiscal Years 1992-93 to 1997-98

Figure 5
 Total Revenues per FTE Student
 Constant Dollars

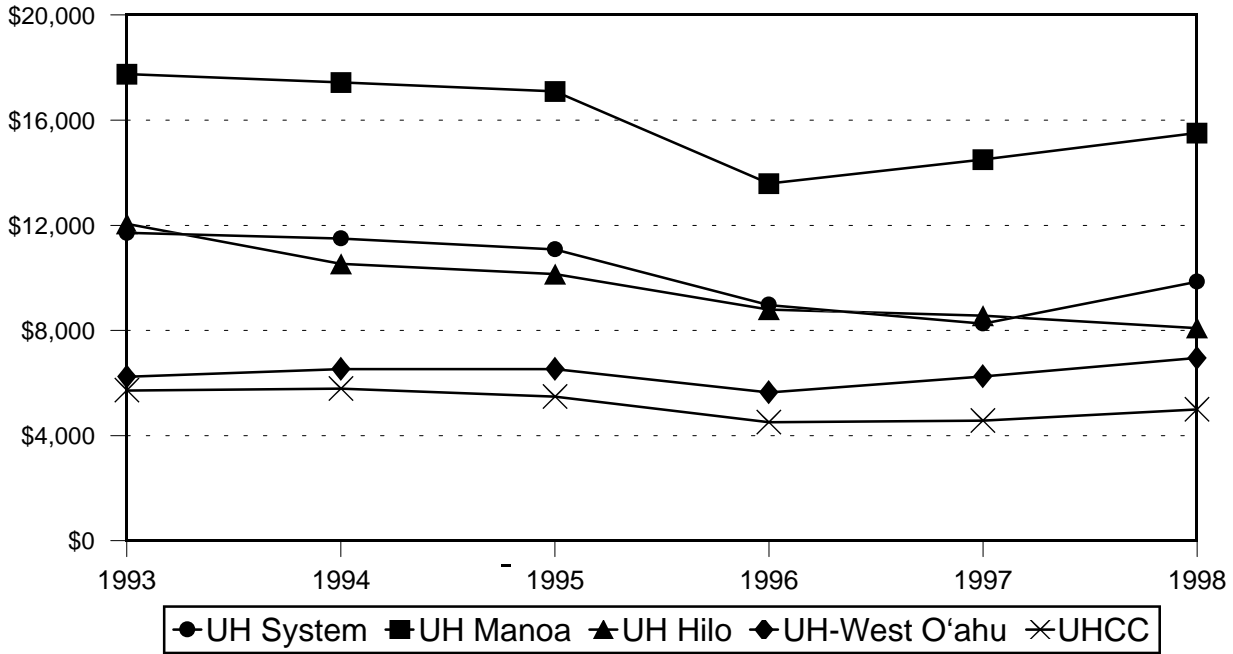


Figure 6
 Total Expenditures per FTE Student
 Constant Dollars

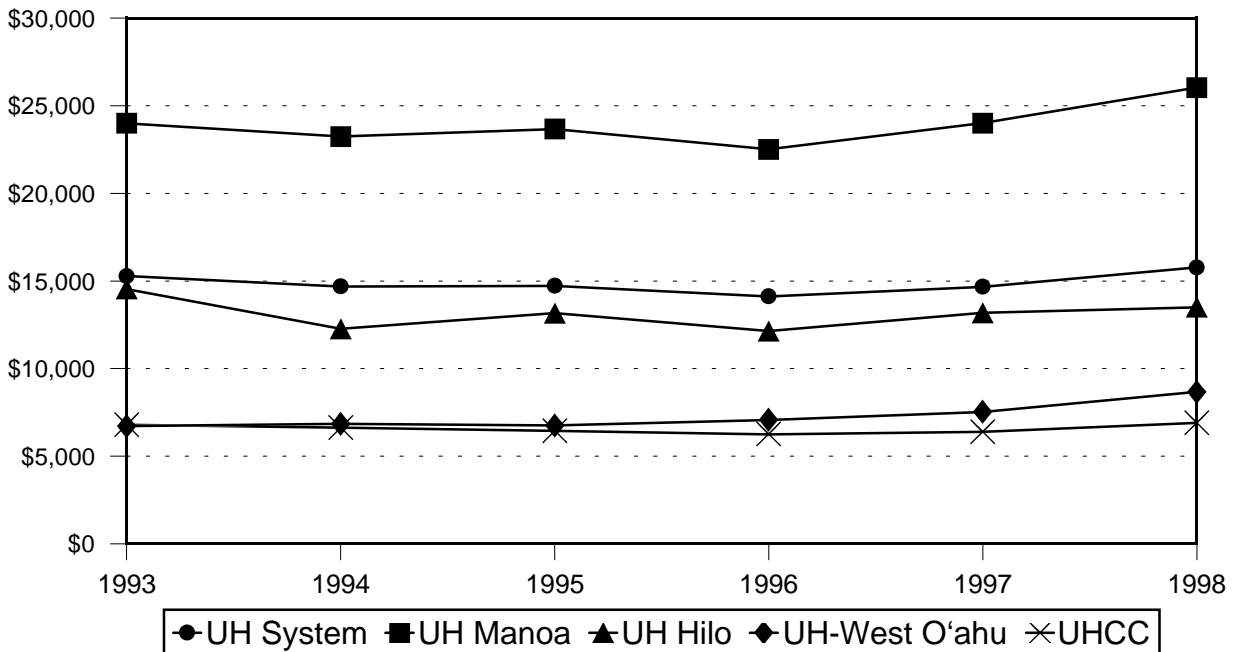


Table 1 (cont.)

| Year | FTE ENROLLMENT | | | REVENUES PER FTE STUDENT | | | | | EXPENDITURES PER FTE STUDENT | | | | | | | | | | | |
|--|----------------|---------|---------|--------------------------|--------------|-----------------|--------------|---------|------------------------------|-------------|-------------|------------|-------------|------------|---------------|---------------|---------|-------------|-----------|---------|
| | Number | % Chnge | % Grads | Tuition 1/ & Fees | State Approp | Priv GC & Endow | TOTAL REV 1/ | % Chnge | Instruc- tion | Student Ser | Acad Sup 2/ | Library 2/ | Inst Supprt | Oper Maint | FULL INSTR 3/ | Funded Resrch | Pub Ser | Student Aid | TOTAL EXP | % Chnge |
| UH HILO Benchmark Group | | | | | | | | | | | | | | | | | | | | |
| 1992-93 | 3,217 | | 4 | 2,476 | 3,755 | 132 | 6,362 | | 3,137 | 601 | 667 | 296 | 919 | 734 | 5,978 | 63 | 202 | 1,028 | 7,352 | |
| 1993-94 | 3,186 | -1.0 | 3 | 2,692 | 3,909 | 141 | 6,742 | 6.0 | 3,315 | 640 | 722 | 324 | 1,039 | 800 | 6,425 | 65 | 239 | 966 | 7,786 | 5.9 |
| 1994-95 | 3,174 | -0.4 | 3 | 2,830 | 4,176 | 143 | 7,149 | 6.0 | 3,521 | 694 | 753 | 354 | 1,093 | 806 | 6,770 | 69 | 258 | 1,013 | 8,207 | 5.4 |
| 1995-96 | 3,157 | -0.5 | 3 | 2,992 | 4,329 | 155 | 7,476 | 4.6 | 3,707 | 758 | 806 | 366 | 1,108 | 855 | 7,126 | 78 | 284 | 1,216 | 8,811 | 7.4 |
| 1996-97 | 3,182 | 0.8 | 3 | 3,058 | 4,577 | 152 | 7,787 | 4.2 | 3,840 | 799 | 851 | 379 | 1,157 | 911 | 7,449 | 85 | 277 | 1,192 | 9,111 | 3.4 |
| 1997-98 | 3,175 | -0.2 | 6 | 3,224 | 4,884 | 173 | 8,281 | 6.3 | 4,046 | 847 | 924 | 392 | 1,221 | 950 | 7,780 | 90 | 293 | 1,293 | 9,664 | 6.1 |
| % Change FY 93 to 98 | | -1.3 | | | | | | 30.2 | | | | | | | | | | | | 31.4 |
| UH HILO Peer Group | | | | | | | | | | | | | | | | | | | | |
| 1992-93 | 2,834 | | 4 | 2,984 | 4,290 | 158 | 7,432 | | 3,449 | 765 | 793 | 380 | 1,250 | 848 | 7,023 | 110 | 166 | 973 | 8,354 | |
| 1993-94 | 2,797 | -1.3 | 2 | 3,189 | 4,290 | 236 | 7,715 | 3.8 | 3,610 | 857 | 837 | 434 | 1,380 | 923 | 7,527 | 100 | 166 | 1,005 | 8,877 | 6.3 |
| 1994-95 | 2,804 | 0.3 | 2 | 3,379 | 5,062 | 214 | 8,656 | 12.2 | 3,824 | 917 | 930 | 474 | 1,401 | 908 | 7,894 | 100 | 185 | 1,037 | 9,302 | 4.8 |
| 1995-96 5/ | 2,785 | -0.7 | 1 | 3,635 | 5,257 | 349 | 9,241 | 6.8 | 4,020 | 1,019 | 969 | 455 | 1,493 | 1,121 | 8,524 | 96 | 233 | 1,233 | 10,185 | 9.5 |
| 1996-97 | 2,753 | -1.1 | 1 | 3,783 | 5,717 | 284 | 9,783 | 5.9 | 4,273 | 1,106 | 1,083 | 479 | 1,606 | 1,243 | 9,205 | 107 | 253 | 1,421 | 11,093 | 8.9 |
| 1997-98 | 2,793 | 1.5 | 3 | 3,935 | 6,007 | 305 | 10,247 | 4.7 | 4,446 | 1,175 | 1,088 | 464 | 1,699 | 1,258 | 9,205 | 110 | 263 | 1,571 | 11,610 | 4.7 |
| % Change FY 93 to 98 | | -1.4 | | | | | | 37.9 | | | | | | | | | | | | 39.0 |
| UH WEST O'AHU 4/ | | | | | | | | | | | | | | | | | | | | |
| 1992-93 | 379 | | 1 | 978 | 5,262 | 1 | 6,241 | | 3,662 | 900 | 854 | 429 | 1,014 | 0 | 6,414 | 55 | 0 | 230 | 6,715 | |
| 1993-94 | 390 | 2.9 | 0 | 994 | 5,749 | 6 | 6,749 | 8.1 | 3,838 | 904 | 832 | 53 | 915 | 133 | 6,553 | 227 | 0 | 230 | 7,079 | 5.4 |
| 1994-95 | 438 | 12.3 | 0 | 1,018 | 5,928 | 6 | 6,952 | 3.0 | 4,171 | 985 | 754 | 52 | 778 | 230 | 6,910 | 26 | 0 | 245 | 7,189 | 1.6 |
| 1995-96 | 418 | -4.6 | 0 | 1,331 | 4,856 | 6 | 6,193 | -10.9 | 4,473 | 1,057 | 984 | 501 | 570 | 226 | 7,254 | 188 | 0 | 262 | 7,760 | 7.9 |
| 1996-97 | 384 | -8.1 | 0 | 1,745 | 5,304 | 7 | 7,056 | 13.9 | 4,889 | 1,244 | 1,025 | 521 | 908 | 93 | 8,158 | 4 | 0 | 347 | 8,510 | 9.7 |
| 1997-98 | 397 | 3.4 | 0 | 2,380 | 5,748 | 8 | 8,136 | 15.3 | 5,961 | 1,250 | 1,114 | 645 | 1,012 | 312 | 9,644 | 12 | 0 | 486 | 10,146 | 19.2 |
| % Change FY 93 to 98 | | 4.7 | | | | | | 30.4 | | | | | | | | | | | | 51.1 |
| UH WEST O'AHU 4/ (Including Systemwide) | | | | | | | | | | | | | | | | | | | | |
| 1992-93 | 379 | | 1 | 978 | 5,664 | 1 | 6,643 | | 3,662 | 907 | 948 | 429 | 2,088 | 0 | 7,589 | 55 | 0 | 230 | 7,890 | |
| 1993-94 | 390 | 2.9 | 0 | 994 | 6,270 | 6 | 7,270 | 9.4 | 3,838 | 913 | 929 | 53 | 2,002 | 133 | 7,747 | 227 | 0 | 230 | 8,272 | 4.8 |
| 1994-95 | 438 | 12.3 | 0 | 1,018 | 6,383 | 6 | 7,407 | 1.9 | 4,171 | 993 | 845 | 52 | 1,903 | 230 | 8,134 | 26 | 0 | 245 | 8,413 | 1.7 |
| 1995-96 | 418 | -4.6 | 0 | 1,331 | 5,270 | 6 | 6,607 | -10.8 | 4,473 | 1,067 | 1,149 | 501 | 1,023 | 226 | 7,882 | 188 | 0 | 262 | 8,388 | -0.3 |
| 1996-97 | 384 | -8.1 | 0 | 1,745 | 5,821 | 7 | 7,573 | 14.6 | 4,912 | 1,255 | 1,190 | 521 | 1,734 | 93 | 9,183 | 4 | 0 | 347 | 9,535 | 13.7 |
| 1997-98 | 397 | 3.4 | 0 | 2,380 | 6,277 | 8 | 8,665 | 14.4 | 5,961 | 1,259 | 1,270 | 645 | 1,876 | 313 | 10,673 | 12 | 0 | 489 | 11,180 | 17.3 |
| % Change FY 93 to 98 | | 4.7 | | | | | | 30.4 | | | | | | | | | | | | 41.7 |
| UH WEST O'AHU Peer Group | | | | | | | | | | | | | | | | | | | | |
| 1995-96 5/ | 644 | | 2 | 2,734 | 4,085 | 205 | 7,024 | | 3,803 | 1,575 | 816 | 353 | 1,053 | 1,034 | 6,184 | 40 | 367 | 1,358 | 9,617 | |
| 1996-97 | 735 | 14.1 | 3 | 3,198 | 4,664 | 364 | 8,225 | 17.1 | 3,937 | 1,223 | 926 | 328 | 1,072 | 1,011 | 8,027 | 6 | 469 | 1,415 | 10,059 | 4.6 |
| 1997-98 | 670 | -8.8 | 3 | 3,630 | 5,268 | 438 | 9,335 | 13.5 | 4,247 | 1,381 | 1,001 | 311 | 1,333 | 1,231 | 8,778 | 5 | 645 | 1,553 | 11,396 | 13.3 |

Table 1 (cont.)

| Year | FTE ENROLLMENT | | | REVENUES PER FTE STUDENT | | | | | EXPENDITURES PER FTE STUDENT | | | | | | | | | | | |
|--|----------------|---------|---------|--------------------------|--------------|-----------------|--------------|---------|------------------------------|-------------|-------------|------------|-------------|------------|---------------|---------------|---------|-------------|-----------|---------|
| | Number | % Chnge | % Grads | Tuition 1/ & Fees | State Approp | Priv GC & Endow | TOTAL REV 1/ | % Chnge | Instruc- tion | Student Ser | Acad Sup 2/ | Library 2/ | Inst Supprt | Oper Maint | FULL INSTR 3/ | Funded Resrch | Pub Ser | Student Aid | TOTAL EXP | % Chnge |
| UH COMMUNITY COLLEGE⁵ | | | | | | | | | | | | | | | | | | | | |
| 1992-93 | 15,689 | | 0 | 820 | 4,856 | 38 | 5,714 | | 3,684 | 580 | 609 | 165 | 452 | 630 | 5,775 | 4 | 595 | 237 | 6,791 | |
| 1993-94 | 15,984 | 1.9 | 0 | 878 | 5,064 | 40 | 5,983 | 4.7 | 3,636 | 619 | 643 | 32 | 450 | 590 | 5,748 | 3 | 631 | 279 | 6,851 | 0.9 |
| 1994-95 | 16,652 | 4.2 | 0 | 834 | 4,969 | 31 | 5,835 | -2.5 | 3,561 | 616 | 642 | 26 | 426 | 629 | 5,672 | 4 | 670 | 313 | 6,861 | 0.1 |
| 1995-96 | 16,183 | -2.8 | 0 | 1,114 | 3,793 | 33 | 4,941 | -15.3 | 3,609 | 640 | 637 | 0 | 461 | 625 | 5,812 | 2 | 533 | 350 | 6,857 | -0.1 |
| 1996-97 | 15,823 | -2.2 | 0 | 1,395 | 3,731 | 32 | 5,157 | 4.4 | 3,660 | 690 | 716 | 165 | 644 | 531 | 6,055 | 2 | 621 | 354 | 7,218 | 5.3 |
| 1997-98 | 15,482 | -2.2 | 0 | 1,782 | 4,017 | 43 | 5,842 | 13.3 | 4,019 | 794 | 794 | 235 | 706 | 622 | 6,656 | 2 | 727 | 407 | 8,072 | 11.8 |
| % Change FY 93 to 98 | | -1.3 | | | | | | 2.2 | | | | | | | | | | | | 18.9 |
| UH COMMUNITY COLLEGE⁵ (Including Systemwide) | | | | | | | | | | | | | | | | | | | | |
| 1992-93 | 15,689 | | 0 | 820 | 5,416 | 40 | 6,276 | | 3,712 | 585 | 677 | 165 | 1,158 | 645 | 6,597 | 4 | 595 | 237 | 7,613 | |
| 1993-94 | 15,984 | 1.9 | 0 | 878 | 5,747 | 41 | 6,666 | 6.2 | 3,658 | 629 | 725 | 32 | 1,269 | 605 | 6,696 | 3 | 631 | 279 | 7,799 | 2.4 |
| 1994-95 | 16,652 | 4.2 | 0 | 834 | 5,561 | 31 | 6,426 | -3.6 | 3,561 | 621 | 721 | 26 | 1,321 | 637 | 6,659 | 4 | 670 | 313 | 7,848 | 0.6 |
| 1995-96 | 16,183 | -2.8 | 0 | 1,114 | 4,279 | 33 | 5,426 | -15.6 | 3,609 | 649 | 744 | 0 | 1,116 | 626 | 6,581 | 2 | 541 | 350 | 7,637 | -2.7 |
| 1996-97 | 15,823 | -2.2 | 0 | 1,395 | 4,328 | 32 | 5,755 | 6.1 | 3,678 | 698 | 832 | 165 | 1,374 | 533 | 6,928 | 2 | 621 | 354 | 8,092 | 6.0 |
| 1997-98 | 15,482 | -2.2 | 0 | 1,782 | 4,584 | 44 | 6,410 | 11.4 | 4,019 | 803 | 905 | 235 | 1,674 | 736 | 7,702 | 2 | 727 | 410 | 9,276 | 14.6 |
| % Change FY 93 to 98 | | -1.3 | | | | | | 2.1 | | | | | | | | | | | | 21.8 |
| UH COMMUNITY COLLEGE⁵ Benchmark Group | | | | | | | | | | | | | | | | | | | | |
| 1992-93 | 12,873 | | 0 | 1,566 | 4,342 | 122 | 6,030 | | 3,673 | 693 | 404 | 109 | 954 | 674 | 6,355 | 5 | 142 | 681 | 7,227 | |
| 1993-94 | 12,570 | -2.4 | 0 | 1,657 | 4,361 | 124 | 6,142 | 1.9 | 3,756 | 714 | 406 | 130 | 998 | 708 | 6,534 | 7 | 155 | 707 | 7,451 | 3.1 |
| 1994-95 | 12,212 | -2.8 | 0 | 1,894 | 4,548 | 139 | 6,581 | 7.1 | 3,927 | 794 | 438 | 128 | 1,134 | 738 | 6,978 | 7 | 171 | 778 | 7,988 | 7.2 |
| 1995-96 | 12,078 | -1.1 | 0 | 1,897 | 4,786 | 143 | 6,826 | 3.7 | 4,175 | 832 | 514 | 139 | 1,358 | 748 | 7,569 | 7 | 185 | 795 | 8,613 | 7.8 |
| 1996-97 | 11,947 | -1.1 | 0 | 2,077 | 5,053 | 182 | 7,311 | 7.1 | 4,306 | 844 | 518 | 153 | 1,367 | 811 | 7,788 | 2 | 192 | 825 | 8,865 | 2.9 |
| 1997-98 | 11,798 | -1.2 | 0 | 2,192 | 5,497 | 219 | 7,909 | 8.2 | 4,560 | 956 | 571 | 163 | 1,515 | 827 | 8,314 | 2 | 216 | 940 | 9,587 | 8.1 |
| % Change FY 93 to 98 | | -8.4 | | | | | | 31.2 | | | | | | | | | | | | 32.7 |

1/ Tuition revenues for FY92-93 through FY94-95 were returned to the State of Hawai'i general fund, but for comparative purposes are included here in "Tuition Revenue" instead of "Appropriations".

2/ Library is included in Academic Support.

3/ This is the estimated full instructional expenditure, not adjusted by cost of living index (CLI) or higher education wage index (HEWI). Beginning FY97-98, Research Associates developed a new methodology for this measure.

4/ There are no peer or benchmark groups for the UH system. There is no benchmark group for UH-West O'ahu.

5/ Peer groups were updated effective April 1998 by NCHEMS, therefore, beginning FY95-96 data are compared against the new peer groups.

6/ Revenues and expenditures for UH Hilo may be overstated due to the inclusion of revenue and expenditure items for Hawai'i Community College.

Note: Historical information for the UH Community College campuses may be found in the "Revenues and Expenditures: Benchmark and Peer Group Comparisons" report for the UH Community Colleges, Fiscal Year 1997-98.

Source: Research Associates of Washington.

Table 2 (cont.)

| Year | FTE ENROLLMENT | | | REVENUES PER FTE STUDENT | | | | | EXPENDITURES PER FTE STUDENT | | | | | | | | | | | |
|--|----------------|---------|---------|--------------------------|--------------|-----------------|--------------|---------|------------------------------|-------------|-------------|------------|-------------|------------|---------------|---------------|---------|-------------|-----------|---------|
| | Number | % Chnge | % Grads | Tuition 1/ & Fees | State Approp | Priv GC & Endow | TOTAL REV 1/ | % Chnge | Instruc- tion | Student Ser | Acad Sup 2/ | Library 2/ | Inst Supprt | Oper Maint | FULL INSTR 3/ | Funded Resrch | Pub Ser | Student Aid | TOTAL EXP | % Chnge |
| UH HILO Benchmark Group | | | | | | | | | | | | | | | | | | | | |
| 1992-93 | 3,217 | | 4 | 2,476 | 3,755 | 132 | 6,362 | | 3,137 | 601 | 667 | 296 | 919 | 734 | 5,978 | 63 | 202 | 1,028 | 7,352 | |
| 1993-94 | 3,186 | -1.0 | 3 | 2,603 | 3,780 | 136 | 6,520 | 2.5 | 3,206 | 619 | 698 | 313 | 1,005 | 774 | 6,214 | 63 | 231 | 934 | 7,530 | 2.4 |
| 1994-95 | 3,174 | -0.4 | 3 | 2,657 | 3,921 | 134 | 6,713 | 3.0 | 3,306 | 652 | 707 | 332 | 1,026 | 757 | 6,357 | 65 | 242 | 951 | 7,706 | 2.3 |
| 1995-96 | 3,157 | -0.5 | 3 | 2,727 | 3,946 | 141 | 6,815 | 1.5 | 3,379 | 691 | 735 | 334 | 1,010 | 779 | 6,496 | 71 | 259 | 1,108 | 8,032 | 4.2 |
| 1996-97 | 3,182 | 0.8 | 3 | 2,706 | 4,050 | 135 | 6,891 | 1.1 | 3,398 | 707 | 753 | 335 | 1,024 | 806 | 6,592 | 75 | 245 | 1,055 | 8,063 | 0.4 |
| 1997-98 | 3,175 | -0.2 | 6 | 2,756 | 4,174 | 148 | 7,078 | 2.7 | 3,458 | 724 | 790 | 335 | 1,044 | 812 | 6,650 | 77 | 250 | 1,105 | 8,260 | 2.4 |
| % Change FY 93 to 98 | | -1.3 | | | | | | 11.3 | | | | | | | | | | | | 12.3 |
| UH HILO Peer Group | | | | | | | | | | | | | | | | | | | | |
| 1992-93 | 2,834 | | 4 | 2,984 | 4,290 | 158 | 7,432 | | 3,449 | 765 | 793 | 380 | 1,250 | 848 | 7,023 | 110 | 166 | 973 | 8,354 | |
| 1993-94 | 2,797 | -1.3 | 2 | 3,084 | 4,149 | 228 | 7,461 | 0.4 | 3,491 | 829 | 809 | 420 | 1,335 | 893 | 7,279 | 97 | 161 | 972 | 8,585 | 2.8 |
| 1994-95 | 2,804 | 0.3 | 2 | 3,173 | 4,753 | 201 | 8,128 | 8.9 | 3,591 | 861 | 873 | 445 | 1,315 | 853 | 7,412 | 94 | 174 | 974 | 8,734 | 1.7 |
| 1995-96 6/ | 2,785 | -0.7 | 1 | 3,314 | 4,792 | 318 | 8,424 | 3.6 | 3,665 | 929 | 883 | 415 | 1,361 | 1,022 | 7,770 | 88 | 212 | 1,124 | 9,284 | 6.3 |
| 1996-97 | 2,753 | -1.1 | 1 | 3,348 | 5,059 | 251 | 8,658 | 2.8 | 3,781 | 979 | 958 | 424 | 1,421 | 1,100 | 8,146 | 95 | 224 | 1,258 | 9,817 | 5.7 |
| 1997-98 | 2,793 | 1.5 | 3 | 3,363 | 5,134 | 261 | 8,758 | 1.2 | 3,800 | 1,004 | 930 | 397 | 1,452 | 1,075 | 7,868 | 94 | 225 | 1,343 | 9,923 | 1.1 |
| % Change FY 93 to 98 | | -1.4 | | | | | | 17.8 | | | | | | | | | | | | 18.8 |
| UH WEST O'AHU 5/ | | | | | | | | | | | | | | | | | | | | |
| 1992-93 | 379 | | 1 | 978 | 5,262 | 1 | 6,241 | | 3,662 | 900 | 854 | 429 | 1,014 | 0 | 6,414 | 55 | 0 | 230 | 6,715 | |
| 1993-94 | 390 | 2.9 | 0 | 961 | 5,560 | 6 | 6,527 | 4.6 | 3,712 | 874 | 805 | 51 | 885 | 129 | 6,338 | 220 | 0 | 222 | 6,846 | 2.0 |
| 1994-95 | 438 | 12.3 | 0 | 956 | 5,566 | 6 | 6,528 | 0.0 | 3,916 | 925 | 708 | 49 | 731 | 216 | 6,488 | 24 | 0 | 230 | 6,750 | -1.4 |
| 1995-96 | 418 | -4.6 | 0 | 1,213 | 4,427 | 5 | 5,645 | -13.5 | 4,077 | 964 | 897 | 457 | 520 | 206 | 6,612 | 171 | 0 | 239 | 7,074 | 4.8 |
| 1996-97 | 384 | -8.1 | 0 | 1,544 | 4,694 | 6 | 6,244 | 10.6 | 4,327 | 1,101 | 907 | 461 | 804 | 82 | 7,219 | 4 | 0 | 307 | 7,531 | 6.5 |
| 1997-98 | 397 | 3.4 | 0 | 2,034 | 4,913 | 7 | 6,954 | 11.4 | 5,095 | 1,069 | 952 | 551 | 865 | 267 | 8,243 | 10 | 0 | 415 | 8,672 | 15.1 |
| % Change FY 93 to 98 | | 4.7 | | | | | | 11.4 | | | | | | | | | | | | 29.1 |
| UH WEST O'AHU 5/ (Including Systemwide) | | | | | | | | | | | | | | | | | | | | |
| 1992-93 | 379 | | 1 | 978 | 5,664 | 1 | 6,643 | | 3,662 | 907 | 948 | 429 | 2,088 | 0 | 7,589 | 55 | 0 | 230 | 7,890 | |
| 1993-94 | 390 | 2.9 | 0 | 961 | 6,064 | 6 | 7,031 | 5.8 | 3,712 | 883 | 898 | 51 | 1,936 | 129 | 7,492 | 220 | 0 | 222 | 8,000 | 1.4 |
| 1994-95 | 438 | 12.3 | 0 | 956 | 5,993 | 6 | 6,955 | -1.1 | 3,916 | 932 | 793 | 49 | 1,787 | 216 | 7,638 | 24 | 0 | 230 | 7,900 | -1.3 |
| 1995-96 | 418 | -4.6 | 0 | 1,213 | 4,804 | 5 | 6,023 | -13.4 | 4,077 | 973 | 1,047 | 457 | 933 | 206 | 7,185 | 171 | 0 | 239 | 7,646 | -3.2 |
| 1996-97 | 384 | -8.1 | 0 | 1,544 | 5,151 | 6 | 6,702 | 11.3 | 4,347 | 1,111 | 1,053 | 461 | 1,535 | 82 | 8,126 | 4 | 0 | 307 | 8,438 | 10.4 |
| 1997-98 | 397 | 3.4 | 0 | 2,034 | 5,365 | 7 | 7,406 | 10.5 | 5,095 | 1,076 | 1,085 | 551 | 1,603 | 268 | 9,122 | 10 | 0 | 418 | 9,556 | 13.2 |
| % Change FY 93 to 98 | | 4.7 | | | | | | 11.5 | | | | | | | | | | | | 21.1 |
| UH WEST O'AHU Peer Group | | | | | | | | | | | | | | | | | | | | |
| 1995-96 6/ | 644 | | 2 | 2,492 | 3,724 | 187 | 6,403 | | 3,467 | 1,436 | 744 | 322 | 960 | 943 | 5,637 | 36 | 335 | 1,238 | 8,767 | |
| 1996-97 | 735 | 14.1 | 3 | 2,830 | 4,127 | 322 | 7,279 | 13.7 | 3,484 | 1,082 | 819 | 290 | 949 | 895 | 7,104 | 5 | 415 | 1,252 | 8,902 | 1.5 |
| 1997-98 | 670 | -8.8 | 3 | 3,103 | 4,503 | 374 | 7,979 | 9.6 | 3,630 | 1,180 | 856 | 266 | 1,139 | 1,052 | 7,503 | 4 | 551 | 1,327 | 9,740 | 9.4 |

Table 2 (cont.)

| Year | FTE ENROLLMENT | | | REVENUES PER FTE STUDENT | | | | | EXPENDITURES PER FTE STUDENT | | | | | | | | | | | |
|--|----------------|---------|---------|--------------------------|--------------|-----------------|--------------|---------|------------------------------|-------------|-------------|------------|-------------|------------|---------------|---------------|---------|-------------|-----------|---------|
| | Number | % Chnge | % Grads | Tuition 1/ & Fees | State Approp | Priv GC & Endow | TOTAL REV 1/ | % Chnge | Instruc- tion | Student Ser | Acad Sup 2/ | Library 2/ | Inst Supprt | Oper Maint | FULL INSTR 3/ | Funded Resrch | Pub Ser | Student Aid | TOTAL EXP | % Chnge |
| UH COMMUNITY COLLEGE⁵ | | | | | | | | | | | | | | | | | | | | |
| 1992-93 | 15,689 | | 0 | 820 | 4,856 | 38 | 5,714 | | 3,684 | 580 | 609 | 165 | 452 | 630 | 5,775 | 4 | 595 | 237 | 6,791 | |
| 1993-94 | 15,984 | 1.9 | 0 | 849 | 4,897 | 39 | 5,786 | 1.3 | 3,516 | 599 | 622 | 31 | 435 | 571 | 5,559 | 3 | 610 | 270 | 6,626 | -2.4 |
| 1994-95 | 16,652 | 4.2 | 0 | 783 | 4,666 | 29 | 5,479 | -5.3 | 3,344 | 578 | 603 | 24 | 400 | 591 | 5,326 | 4 | 629 | 294 | 6,442 | -2.8 |
| 1995-96 | 16,183 | -2.8 | 0 | 1,016 | 3,458 | 30 | 4,504 | -17.8 | 3,289 | 583 | 581 | 0 | 420 | 570 | 5,298 | 2 | 486 | 319 | 6,251 | -3.0 |
| 1996-97 | 15,823 | -2.2 | 0 | 1,235 | 3,301 | 28 | 4,564 | 1.3 | 3,239 | 611 | 634 | 146 | 570 | 470 | 5,358 | 2 | 549 | 313 | 6,387 | 2.2 |
| 1997-98 | 15,482 | -2.2 | 0 | 1,523 | 3,433 | 37 | 4,993 | 9.4 | 3,435 | 679 | 679 | 201 | 604 | 532 | 5,689 | 2 | 621 | 348 | 6,899 | 8.0 |
| % Change FY 93 to 98 | | -1.3 | | | | | | -12.6 | | | | | | | | | | | | 1.6 |
| UH COMMUNITY COLLEGE⁵ (Including Systemwide) | | | | | | | | | | | | | | | | | | | | |
| 1992-93 | 15,689 | | 0 | 820 | 5,416 | 40 | 6,276 | | 3,712 | 585 | 677 | 165 | 1,158 | 645 | 6,597 | 4 | 595 | 237 | 7,613 | |
| 1993-94 | 15,984 | 1.9 | 0 | 849 | 5,558 | 40 | 6,447 | 2.7 | 3,538 | 608 | 701 | 31 | 1,227 | 585 | 6,476 | 3 | 610 | 270 | 7,543 | -0.9 |
| 1994-95 | 16,652 | 4.2 | 0 | 783 | 5,222 | 29 | 6,034 | -6.4 | 3,344 | 583 | 677 | 24 | 1,240 | 598 | 6,253 | 4 | 629 | 294 | 7,369 | -2.3 |
| 1995-96 | 16,183 | -2.8 | 0 | 1,015 | 3,901 | 30 | 4,946 | -18.0 | 3,290 | 592 | 678 | 0 | 1,017 | 571 | 5,999 | 2 | 493 | 319 | 6,962 | -5.5 |
| 1996-97 | 15,823 | -2.2 | 0 | 1,235 | 3,830 | 28 | 5,093 | 3.0 | 3,255 | 618 | 736 | 146 | 1,216 | 472 | 6,131 | 2 | 550 | 313 | 7,161 | 2.9 |
| 1997-98 | 15,482 | -2.2 | 0 | 1,523 | 3,918 | 38 | 5,479 | 7.6 | 3,435 | 686 | 774 | 201 | 1,431 | 629 | 6,583 | 2 | 621 | 350 | 7,928 | 10.7 |
| % Change FY 93 to 98 | | -1.3 | | | | | | -12.7 | | | | | | | | | | | | 4.1 |
| UH COMMUNITY COLLEGE⁵ Benchmark Group | | | | | | | | | | | | | | | | | | | | |
| 1992-93 | 12,873 | | 0 | 1,566 | 4,342 | 122 | 6,030 | | 3,673 | 693 | 404 | 109 | 954 | 674 | 6,355 | 5 | 142 | 681 | 7,227 | |
| 1993-94 | 12,570 | -2.4 | 0 | 1,603 | 4,218 | 120 | 5,940 | -1.5 | 3,632 | 691 | 393 | 126 | 965 | 685 | 6,319 | 7 | 150 | 684 | 7,206 | -0.3 |
| 1994-95 | 12,212 | -2.8 | 0 | 1,778 | 4,270 | 131 | 6,179 | 4.0 | 3,687 | 746 | 411 | 120 | 1,065 | 693 | 6,552 | 7 | 161 | 731 | 7,500 | 4.1 |
| 1995-96 | 12,078 | -1.1 | 0 | 1,729 | 4,363 | 130 | 6,222 | 0.7 | 3,806 | 758 | 469 | 127 | 1,238 | 682 | 6,900 | 6 | 169 | 725 | 7,851 | 4.7 |
| 1996-97 | 11,947 | -1.1 | 0 | 1,838 | 4,472 | 161 | 6,470 | 4.0 | 3,811 | 747 | 458 | 135 | 1,210 | 718 | 6,892 | 2 | 170 | 730 | 7,845 | -0.1 |
| 1997-98 | 11,798 | -1.2 | 0 | 1,874 | 4,698 | 187 | 6,760 | 4.5 | 3,897 | 817 | 488 | 139 | 1,295 | 707 | 7,106 | 2 | 185 | 803 | 8,194 | 4.4 |
| % Change FY 93 to 98 | | -8.4 | | | | | | 12.1 | | | | | | | | | | | | 13.4 |

1/ Constant dollars based on inflation measured by the Higher Education Price Index (HEPI). FY 1992-93 = 100.

2/ Tuition revenues for FY92-93 through FY94-95 were returned to the State of Hawai'i general fund, but for comparative purposes are included here in "Tuition Revenue" instead of "Appropriations".

3/ Library is included in Academic Support.

4/ This is the estimated full instructional expenditure, not adjusted by cost of living index (CLI) or higher education wage index (HEWI). Beginning FY97-98, Research Associates developed a new methodology for this measure.

5/ There are no peer or benchmark groups for the UH system. There is no benchmark group for UH-West O'ahu.

6/ Peer groups were updated effective April 1998 by NCHEMS, therefore, beginning FY95-96 data are compared against the new peer groups.

7/ Revenues and expenditures for UH Hilo may be overstated due to the inclusion of revenue and expenditure items for Hawai'i Community College.

Note: Historical information for the UH Community College campuses may be found in the "Revenues and Expenditures: Benchmark and Peer Group Comparisons" report for the UH Community Colleges, Fiscal Year 1997-98.

Source: Research Associates of Washington.

TABLE 3
UNIVERSITY OF HAWAII, BY UNIT
REVENUES & EXPENDITURES, PER FTE STUDENT
FISCAL YEAR 1992-93 TO 1997-98
PERCENT DISTRIBUTION

| Year | FTE ENROLLMENT | | REVENUES PER FTE STUDENT | | | | EXPENDITURES PER FTE STUDENT | | | | | | | | | | |
|--|----------------|---------|--------------------------|--------------|-----------------|--------------|------------------------------|-------------|-------------|------------|-------------|------------|---------------|---------------|---------|-------------|-----------|
| | Number | % Grads | Tuition 1/ & Fees | State Approp | Priv GC & Endow | TOTAL REV 1/ | Instruc- tion | Student Ser | Acad Sup 2/ | Library 2/ | Inst Supprt | Oper Maint | FULL INSTR 3/ | Funded Resrch | Pub Ser | Student Aid | TOTAL EXP |
| UH SYSTEM 4/ | | | | | | | | | | | | | | | | | |
| 1992-93 | 33,977 | 14 | 12 | 84 | 4 | 100% | 42 | 5 | 10 | 3 | 3 | 8 | 59 | 23 | 7 | 2 | 100% |
| 1993-94 | 34,925 | 13 | 12 | 84 | 4 | 100% | 42 | 6 | 10 | 1 | 3 | 7 | 58 | 23 | 7 | 2 | 100% |
| 1994-95 | 35,751 | 13 | 12 | 84 | 4 | 100% | 42 | 5 | 9 | 1 | 3 | 7 | 57 | 23 | 8 | 2 | 100% |
| 1995-96 | 35,008 | 12 | 19 | 74 | 6 | 100% | 43 | 6 | 9 | 3 | 5 | 5 | 59 | 23 | 7 | 3 | 100% |
| 1996-97 | 33,183 | 11 | 25 | 70 | 5 | 100% | 43 | 6 | 9 | 3 | 5 | 4 | 58 | 23 | 7 | 3 | 100% |
| 1997-98 | 32,280 | 14 | 27 | 66 | 7 | 100% | 41 | 5 | 9 | 3 | 4 | 6 | 56 | 24 | 7 | 3 | 100% |
| UH SYSTEM 4/ (Including Systemwide) | | | | | | | | | | | | | | | | | |
| 1992-93 | 33,977 | 14 | 11 | 85 | 3 | 100% | 40 | 5 | 10 | 3 | 7 | 8 | 62 | 22 | 6 | 2 | 100% |
| 1993-94 | 34,925 | 13 | 11 | 85 | 3 | 100% | 40 | 5 | 10 | 1 | 6 | 6 | 59 | 22 | 7 | 2 | 100% |
| 1994-95 | 35,751 | 13 | 11 | 85 | 4 | 100% | 40 | 5 | 10 | 1 | 8 | 7 | 62 | 23 | 8 | 2 | 100% |
| 1995-96 | 35,008 | 12 | 18 | 76 | 6 | 100% | 42 | 5 | 10 | 3 | 9 | 5 | 62 | 22 | 7 | 3 | 100% |
| 1996-97 | 33,183 | 11 | 23 | 72 | 5 | 100% | 44 | 6 | 10 | 3 | 11 | 5 | 66 | 24 | 8 | 3 | 100% |
| 1997-98 | 32,280 | 14 | 25 | 68 | 6 | 100% | 39 | 5 | 10 | 3 | 8 | 6 | 59 | 23 | 7 | 3 | 100% |
| UH MANOA | | | | | | | | | | | | | | | | | |
| 1992-93 | 15,818 | 33 | 12 | 84 | 5 | 100% | 38 | 4 | 10 | 4 | 2 | 8 | 50 | 31 | 6 | 2 | 100% |
| 1993-94 | 16,104 | 27 | 12 | 84 | 5 | 100% | 39 | 4 | 10 | 1 | 2 | 6 | 47 | 31 | 7 | 2 | 100% |
| 1994-95 | 16,225 | 27 | 11 | 83 | 6 | 100% | 38 | 4 | 9 | 1 | 2 | 7 | 46 | 32 | 7 | 2 | 100% |
| 1995-96 | 16,046 | 26 | 19 | 73 | 9 | 100% | 40 | 4 | 8 | 3 | 4 | 4 | 47 | 31 | 7 | 2 | 100% |
| 1996-97 | 14,670 | 25 | 24 | 69 | 7 | 100% | 40 | 4 | 9 | 3 | 4 | 3 | 45 | 32 | 7 | 2 | 100% |
| 1997-98 | 14,173 | 31 | 26 | 65 | 9 | 100% | 38 | 4 | 9 | 3 | 2 | 6 | 50 | 34 | 6 | 2 | 100% |
| UH MANOA (Including Systemwide) | | | | | | | | | | | | | | | | | |
| 1992-93 | 15,818 | 33 | 11 | 84 | 5 | 100% | 37 | 4 | 10 | 4 | 4 | 7 | 51 | 30 | 6 | 2 | 100% |
| 1993-94 | 16,104 | 27 | 11 | 85 | 5 | 100% | 37 | 4 | 10 | 1 | 4 | 6 | 50 | 31 | 7 | 2 | 100% |
| 1994-95 | 16,225 | 27 | 10 | 84 | 5 | 100% | 37 | 4 | 10 | 1 | 4 | 6 | 50 | 30 | 7 | 2 | 100% |
| 1995-96 | 16,046 | 26 | 17 | 74 | 8 | 100% | 38 | 4 | 9 | 3 | 7 | 4 | 49 | 29 | 7 | 2 | 100% |
| 1996-97 | 14,670 | 25 | 22 | 71 | 7 | 100% | 38 | 4 | 9 | 3 | 8 | 3 | 48 | 30 | 6 | 2 | 100% |
| 1997-98 | 14,173 | 31 | 24 | 67 | 9 | 100% | 37 | 4 | 10 | 3 | 4 | 6 | 45 | 33 | 6 | 2 | 100% |

Table 3 (cont.)

| Year | FTE ENROLLMENT | | REVENUES PER FTE STUDENT | | | | EXPENDITURES PER FTE STUDENT | | | | | | | | | | |
|--|----------------|---------|--------------------------|-----------------|--------------------|-----------------|------------------------------|----------------|----------------|---------------|----------------|---------------|------------------|------------------|------------|----------------|--------------|
| | Number | % Grads | Tuition 1/ & Fees | State Approp | Priv GC & Endow | TOTAL REV 1/ | Instruc- tion | Student Ser | Acad Sup 2/ | Library 2/ | Inst Supprt | Oper Maint | FULL INSTR 3/ | Funded Resrch | Pub Ser | Student Aid | TOTAL EXP |
| UH MANOA Benchmark Group | | | | | | | | | | | | | | | | | |
| 1992-93 | 28,401 | 27 | 32 | 55 | 13 | 100% | 36 | 4 | 10 | 3 | 6 | 7 | 53 | 25 | 6 | 7 | 100% |
| 1993-94 | 28,251 | 25 | 34 | 53 | 13 | 100% | 35 | 4 | 10 | 3 | 7 | 7 | 49 | 25 | 6 | 7 | 100% |
| 1994-95 | 28,276 | 25 | 34 | 53 | 13 | 100% | 34 | 4 | 10 | 3 | 7 | 7 | 48 | 25 | 6 | 8 | 100% |
| 1995-96 | 28,438 | 24 | 34 | 54 | 14 | 100% | 34 | 4 | 10 | 3 | 7 | 7 | 48 | 24 | 6 | 9 | 100% |
| 1996-97 | 28,700 | 24 | 36 | 51 | 14 | 100% | 34 | 4 | 10 | 3 | 7 | 7 | 48 | 25 | 6 | 8 | 100% |
| 1997-98 | 29,097 | 27 | 35 | 50 | 14 | 100% | 34 | 4 | 10 | 3 | 7 | 6 | 51 | 25 | 6 | 8 | 100% |
| UH MANOA Peer Group | | | | | | | | | | | | | | | | | |
| 1992-93 | 19,366 | 27 | 27 | 61 | 12 | 100% | 34 | 4 | 9 | 3 | 6 | 7 | 50 | 22 | 12 | 6 | 100% |
| 1993-94 | 19,221 | 23 | 28 | 60 | 12 | 100% | 34 | 3 | 9 | 3 | 6 | 7 | 45 | 23 | 11 | 6 | 100% |
| 1994-95 | 19,263 | 23 | 28 | 60 | 12 | 100% | 34 | 3 | 9 | 3 | 6 | 7 | 45 | 23 | 11 | 6 | 100% |
| 1995-96 5/ | 20,983 | 22 | 32 | 66 | 13 | 100% | 32 | 3 | 9 | 3 | 6 | 6 | 42 | 24 | 12 | 8 | 100% |
| 1996-97 | 21,040 | 22 | 29 | 57 | 14 | 100% | 32 | 3 | 9 | 3 | 6 | 6 | 41 | 24 | 13 | 6 | 100% |
| 1997-98 | 21,342 | 25 | 29 | 57 | 14 | 100% | 32 | 3 | 9 | 3 | 6 | 6 | 46 | 24 | 13 | 7 | 100% |
| UH HILO 6/ | | | | | | | | | | | | | | | | | |
| 1992-93 | 2,091 | 10 | 12 | 88 | 0 | 100% | 48 | 10 | 11 | 4 | 10 | 10 | 87 | 2 | 5 | 4 | 100% |
| 1993-94 | 2,447 | 7 | 12 | 87 | 1 | 100% | 49 | 12 | 9 | 1 | 8 | 11 | 87 | 1 | 5 | 5 | 100% |
| 1994-95 | 2,436 | 6 | 12 | 87 | 1 | 100% | 45 | 11 | 9 | 1 | 7 | 11 | 79 | 2 | 11 | 5 | 100% |
| 1995-96 | 2,361 | 4 | 18 | 80 | 2 | 100% | 54 | 11 | 8 | 4 | 2 | 11 | 84 | 2 | 6 | 6 | 100% |
| 1996-97 | 2,306 | 4 | 23 | 75 | 2 | 100% | 56 | 10 | 6 | 4 | 2 | 10 | 79 | 1 | 11 | 5 | 100% |
| 1997-98 | 2,228 | 7 | 28 | 70 | 2 | 100% | 45 | 9 | 8 | 4 | 8 | 12 | 78 | 1 | 11 | 6 | 100% |
| UH HILO 6/ (Including Systemwide) | | | | | | | | | | | | | | | | | |
| 1992-93 | 2,091 | 10 | 11 | 89 | 0 | 100% | 43 | 9 | 11 | 4 | 18 | 9 | 88 | 2 | 4 | 4 | 100% |
| 1993-94 | 2,447 | 7 | 11 | 88 | 1 | 100% | 44 | 11 | 10 | 1 | 15 | 10 | 88 | 1 | 4 | 4 | 100% |
| 1994-95 | 2,436 | 6 | 11 | 88 | 1 | 100% | 41 | 10 | 9 | 1 | 16 | 10 | 81 | 1 | 10 | 5 | 100% |
| 1995-96 | 2,361 | 4 | 17 | 81 | 2 | 100% | 52 | 11 | 9 | 4 | 3 | 11 | 84 | 2 | 6 | 6 | 100% |
| 1996-97 | 2,306 | 4 | 22 | 77 | 1 | 100% | 55 | 9 | 7 | 4 | 3 | 10 | 80 | 1 | 10 | 5 | 100% |
| 1997-98 | 2,228 | 7 | 26 | 72 | 2 | 100% | 42 | 9 | 9 | 4 | 14 | 11 | 78 | 1 | 10 | 5 | 100% |

Table 3 (cont.)

| Year | FTE ENROLLMENT | | REVENUES PER FTE STUDENT | | | | EXPENDITURES PER FTE STUDENT | | | | | | | | | | |
|--|----------------|---------|--------------------------|-----------------|--------------------|-----------------|------------------------------|----------------|----------------|---------------|----------------|---------------|------------------|------------------|------------|----------------|--------------|
| | Number | % Grads | Tuition 1/ & Fees | State Approp | Priv GC & Endow | TOTAL REV 1/ | Instruc- tion | Student Ser | Acad Sup 2/ | Library 2/ | Inst Supprt | Oper Maint | FULL INSTR 3/ | Funded Resrch | Pub Ser | Student Aid | TOTAL EXP |
| UH HILO Benchmark Group | | | | | | | | | | | | | | | | | |
| 1992-93 | 3,217 | 4 | 40 | 58 | 2 | 100% | 43 | 8 | 9 | 4 | 12 | 10 | 81 | 1 | 3 | 14 | 100% |
| 1993-94 | 3,186 | 3 | 41 | 57 | 2 | 100% | 43 | 8 | 9 | 4 | 13 | 10 | 82 | 1 | 3 | 13 | 100% |
| 1994-95 | 3,174 | 3 | 41 | 57 | 2 | 100% | 43 | 8 | 9 | 4 | 13 | 10 | 82 | 1 | 3 | 13 | 100% |
| 1995-96 7/ | 3,157 | 3 | 41 | 57 | 2 | 100% | 42 | 8 | 9 | 4 | 12 | 10 | 81 | 1 | 3 | 14 | 100% |
| 1996-97 | 3,182 | 3 | 40 | 58 | 2 | 100% | 43 | 9 | 9 | 4 | 12 | 10 | 81 | 1 | 3 | 13 | 100% |
| 1997-98 | 3,175 | 6 | 40 | 58 | 2 | 100% | 42 | 9 | 10 | 4 | 12 | 10 | 80 | 1 | 3 | 14 | 100% |
| UH HILO Peer Group | | | | | | | | | | | | | | | | | |
| 1992-93 | 2,834 | 4 | 43 | 55 | 2 | 100% | 42 | 9 | 10 | 5 | 14 | 10 | 84 | 1 | 2 | 12 | 100% |
| 1993-94 | 2,797 | 2 | 44 | 53 | 3 | 100% | 41 | 10 | 10 | 5 | 15 | 10 | 85 | 1 | 2 | 12 | 100% |
| 1994-95 | 2,804 | 2 | 40 | 58 | 2 | 100% | 42 | 10 | 10 | 5 | 15 | 10 | 85 | 1 | 2 | 12 | 100% |
| 1995-96 5 & 7/ | 2,785 | 1 | 42 | 55 | 4 | 100% | 40 | 10 | 10 | 4 | 14 | 11 | 84 | 1 | 2 | 12 | 100% |
| 1996-97 | 2,753 | 1 | 42 | 56 | 3 | 100% | 39 | 10 | 10 | 4 | 14 | 11 | 83 | 1 | 2 | 13 | 100% |
| 1997-98 | 2,793 | 3 | 41 | 56 | 3 | 100% | 39 | 10 | 10 | 4 | 14 | 11 | 80 | 1 | 2 | 13 | 100% |
| UH WEST O'AHU 4/ | | | | | | | | | | | | | | | | | |
| 1992-93 | 379 | 1 | 16 | 84 | 0 | 100% | 55 | 13 | 13 | 6 | 15 | 0 | 96 | 1 | 0 | 3 | 100% |
| 1993-94 | 390 | 0 | 15 | 85 | 0 | 100% | 54 | 13 | 12 | 1 | 13 | 2 | 93 | 3 | 0 | 3 | 100% |
| 1994-95 | 438 | 0 | 15 | 85 | 0 | 100% | 58 | 14 | 10 | 1 | 11 | 3 | 96 | 0 | 0 | 3 | 100% |
| 1995-96 | 418 | 0 | 21 | 78 | 0 | 100% | 58 | 14 | 13 | 6 | 7 | 3 | 93 | 2 | 0 | 3 | 100% |
| 1996-97 | 384 | 0 | 25 | 75 | 0 | 100% | 57 | 15 | 12 | 6 | 11 | 1 | 96 | 0 | 0 | 4 | 100% |
| 1997-98 | 397 | 0 | 29 | 71 | 0 | 100% | 59 | 12 | 11 | 6 | 10 | 3 | 95 | 0 | 0 | 5 | 100% |
| UH WEST O'AHU 4/ (Including Systemwide) | | | | | | | | | | | | | | | | | |
| 1992-93 | 379 | 1 | 15 | 85 | 0 | 100% | 46 | 11 | 12 | 5 | 26 | 0 | 96 | 1 | 0 | 3 | 100% |
| 1993-94 | 390 | 0 | 14 | 86 | 0 | 100% | 46 | 11 | 11 | 1 | 24 | 2 | 94 | 3 | 0 | 3 | 100% |
| 1994-95 | 438 | 0 | 14 | 86 | 0 | 100% | 50 | 12 | 10 | 1 | 23 | 3 | 97 | 0 | 0 | 3 | 100% |
| 1995-96 | 418 | 0 | 20 | 80 | 0 | 100% | 53 | 13 | 14 | 6 | 12 | 3 | 94 | 2 | 0 | 3 | 100% |
| 1996-97 | 384 | 0 | 23 | 77 | 0 | 100% | 52 | 13 | 12 | 5 | 18 | 1 | 96 | 0 | 0 | 4 | 100% |
| 1997-98 | 397 | 0 | 27 | 72 | 0 | 100% | 53 | 11 | 11 | 6 | 17 | 3 | 95 | 0 | 0 | 4 | 100% |

Table 3 (cont.)

| Year | FTE ENROLLMENT | | REVENUES PER FTE STUDENT | | | | EXPENDITURES PER FTE STUDENT | | | | | | | | | | |
|---|----------------|---------|--------------------------|--------------|-----------------|--------------|------------------------------|-------------|-------------|------------|-------------|------------|---------------|---------------|---------|-------------|-----------|
| | Number | % Grads | Tuition 1/ & Fees | State Approp | Priv GC & Endow | TOTAL REV 1/ | Instruc- tion | Student Ser | Acad Sup 2/ | Library 2/ | Inst Supprt | Oper Maint | FULL INSTR 3/ | Funded Resrch | Pub Ser | Student Aid | TOTAL EXP |
| UH WEST O'AHU Peer Group | | | | | | | | | | | | | | | | | |
| 1995-96 5/ | 644 | 2 | 40 | 57 | 3 | 100% | 41 | 12 | 8 | 4 | 11 | 11 | 82 | 0 | 4 | 14 | 100% |
| 1996-97 | 735 | 3 | 39 | 56 | 4 | 100% | 41 | 12 | 9 | 3 | 11 | 10 | 81 | 0 | 5 | 13 | 100% |
| 1997-98 | 670 | 3 | 39 | 56 | 5 | 100% | 39 | 12 | 9 | 3 | 11 | 11 | 78 | 0 | 5 | 13 | 100% |
| UH COMMUNITY COLLEGES | | | | | | | | | | | | | | | | | |
| 1992-93 | 15,689 | 0 | 14 | 85 | 1 | 100% | 54 | 9 | 9 | 2 | 7 | 9 | 85 | 0 | 9 | 3 | 100% |
| 1993-94 | 15,984 | 0 | 15 | 85 | 1 | 100% | 53 | 9 | 9 | 0 | 7 | 9 | 84 | 0 | 9 | 4 | 100% |
| 1994-95 | 16,652 | 0 | 14 | 85 | 1 | 100% | 52 | 9 | 9 | 0 | 6 | 9 | 83 | 0 | 10 | 5 | 100% |
| 1995-96 | 16,183 | 0 | 23 | 77 | 1 | 100% | 53 | 9 | 9 | 0 | 7 | 9 | 85 | 0 | 8 | 5 | 100% |
| 1996-97 | 15,823 | 0 | 27 | 72 | 1 | 100% | 51 | 10 | 10 | 2 | 9 | 7 | 84 | 0 | 9 | 5 | 100% |
| 1997-98 | 15,482 | 0 | 31 | 69 | 1 | 100% | 50 | 10 | 10 | 3 | 9 | 8 | 82 | 0 | 9 | 5 | 100% |
| UH COMMUNITY COLLEGES (Including Systemwide) | | | | | | | | | | | | | | | | | |
| 1992-93 | 15,689 | 0 | 13 | 86 | 1 | 100% | 49 | 8 | 9 | 2 | 15 | 8 | 87 | 0 | 8 | 3 | 100% |
| 1993-94 | 15,984 | 0 | 13 | 86 | 1 | 100% | 47 | 8 | 9 | 0 | 16 | 8 | 86 | 0 | 8 | 4 | 100% |
| 1994-95 | 16,652 | 0 | 13 | 87 | 0 | 100% | 45 | 8 | 9 | 0 | 17 | 8 | 85 | 0 | 9 | 4 | 100% |
| 1995-96 | 16,183 | 0 | 21 | 79 | 1 | 100% | 47 | 8 | 10 | 0 | 15 | 8 | 86 | 0 | 7 | 5 | 100% |
| 1996-97 | 15,823 | 0 | 24 | 75 | 1 | 100% | 45 | 9 | 10 | 2 | 17 | 7 | 86 | 0 | 8 | 4 | 100% |
| 1997-98 | 15,482 | 0 | 28 | 72 | 1 | 100% | 43 | 9 | 10 | 3 | 18 | 8 | 83 | 0 | 8 | 4 | 100% |
| UH COMMUNITY COLLEGES Benchmark Group | | | | | | | | | | | | | | | | | |
| 1992-93 | 12,873 | 0 | 27 | 70 | 2 | 100% | 51 | 9 | 6 | 2 | 13 | 9 | 88 | 0 | 2 | 9 | 100% |
| 1993-94 | 12,570 | 0 | 28 | 70 | 2 | 100% | 51 | 9 | 6 | 2 | 13 | 9 | 88 | 0 | 2 | 9 | 100% |
| 1994-95 | 12,212 | 0 | 29 | 68 | 2 | 100% | 50 | 10 | 6 | 2 | 14 | 9 | 88 | 0 | 2 | 10 | 100% |
| 1995-96 | 12,078 | 0 | 28 | 69 | 2 | 100% | 49 | 9 | 6 | 2 | 15 | 9 | 88 | 0 | 2 | 9 | 100% |
| 1996-97 | 11,947 | 0 | 29 | 68 | 3 | 100% | 49 | 9 | 6 | 2 | 15 | 9 | 88 | 0 | 2 | 10 | 100% |
| 1997-98 | 11,798 | 0 | 29 | 68 | 3 | 100% | 48 | 10 | 6 | 2 | 16 | 9 | 87 | 0 | 2 | 10 | 100% |

1/ Tuition revenues for FY92-93 through FY94-95 were returned to the State of Hawai'i general fund, but for comparative purposes are included here in "Tuition Revenue" instead of "Appropriations".

2/ Library is included in Academic Support.

3/ This is the estimated full instructional expenditure, not adjusted by cost of living index (CLI) or higher education wage index (HEWI). Beginning FY97-98, Research Associates developed a new methodology for this measure.

4/ There are no peer or benchmark groups for the UH system. There is no benchmark group for UH-West O'ahu.

5/ Peer groups were updated effective April 1998 by NCHEMS, therefore, beginning FY95-96 data are compared against the new peer groups.

6/ Revenues and expenditures for UH Hilo may be overstated due to the inclusion of revenue and expenditure items for Hawai'i Community College.

7/ Figures for some items have been corrected from previous report.

Note: Historical information for the UH Community College campuses may be found in the "Revenues and Expenditures: Benchmark and Peer Group Comparisons" report for the UH Community Colleges, Fiscal Year 1997-98.

Source: Research Associates of Washington.

**Table 4
UNIVERSITY OF HAWAII
REVENUES & EXPENDITURES, PER FTE STUDENT
FISCAL YEAR 1997-98**

| | INSTITUTION | ENROLLMENT | | REVENUES PER FTE STUDENT | | | EXPENDITURES PER FTE STUDENT | | | | | | | | | | FULL INSTR EXPEND PER FTE STUDENT | | | | | | | | | |
|----|------------------------------------|---------------|-----------|--------------------------|--------------|------------|------------------------------|---------------|--------------|--------------|------------|---------------|--------------|--------------|--------------|-------------|-----------------------------------|-----------------|------------|---------------------|----------|-------------|----------|----------|----------|----------|
| | | FTE | % Grad | Tuition & Fees | Priv Approp | GC Endow | TOTAL REV | Instruc- tion | Student Svc | Acad Sup 1/ | Library 1/ | Inst'l Supprt | Oper Maint | Funded Rsch | Public Svc | Student Aid | TOTAL EXP | Estm Full Instr | HEWI | Adjusted Full Instr | Norm | Devia- tion | | | | |
| 1 | UNIVERSITY OF HAWAII | 32,280 | 14 | 3,111 | 7,638 | 775 | 11,524 | 7,577 | 1,006 | 1,645 | 611 | 714 | 1,198 | 4,502 | 1,326 | 496 | 18,462 | 10,391 | NOT | A | V | A | I | L | A | B |
| 2 | University Of Hawai'i at Manoa | 14,173 | 31 | 4,655 | 11,809 | 1,687 | 18,150 | 11,582 | 1,152 | 2,637 | 1,011 | 625 | 1,753 | 10,226 | 1,959 | 529 | 30,463 | 15,297 | 104 | 13,826 | 11,600 | 19% | | | | |
| | Peer Group Average | 21,342 | 25 | 4,986 | 10,336 | 2,734 | 18,057 | 8,486 | 836 | 2,449 | 771 | 1,618 | 1,620 | 6,111 | 3,394 | 1,699 | 26,214 | 12,158 | 95 | 11,474 | 10,929 | 5% | | | | |
| | Benchmark Group Average | 29,097 | 27 | 6,328 | 9,577 | 2,872 | 18,777 | 9,291 | 1,011 | 2,836 | 818 | 1,787 | 1,731 | 6,995 | 1,581 | 2,111 | 27,344 | 13,828 | 99 | 12,643 | 10,844 | 17% | | | | |
| 3 | University of Hawai'i at Hilo 2/ | 2,228 | 7 | 2,654 | 6,613 | 197 | 9,464 | 7,112 | 1,500 | 1,340 | 684 | 1,282 | 1,821 | 152 | 1,693 | 897 | 15,797 | 12,271 | 95 | 12,916 | 9,600 | 35% | | | | |
| | Peer Group Average | 2,793 | 3 | 3,935 | 6,007 | 305 | 10,247 | 4,446 | 1,175 | 1,088 | 464 | 1,699 | 1,258 | 110 | 263 | 1,571 | 11,610 | 9,205 | 97 | 9,476 | 8,352 | 13% | | | | |
| | Benchmark Group Average | 3,175 | 6 | 3,224 | 4,884 | 173 | 8,281 | 4,046 | 847 | 924 | 392 | 1,221 | 950 | 90 | 293 | 1,293 | 9,664 | 7,780 | 94 | 8,251 | 8,723 | -5% | | | | |
| 4 | University Of Hawai'i - West O'ahu | 397 | 0 | 2,380 | 5,748 | 8 | 8,136 | 5,961 | 1,250 | 1,114 | 645 | 1,012 | 312 | 12 | 0 | 486 | 10,146 | 9,644 | 104 | 9,274 | 13,200 | -30% | | | | |
| | Peer Group Average | 670 | 3 | 3,630 | 5,268 | 438 | 9,335 | 4,247 | 1,381 | 1,001 | 311 | 1,333 | 1,231 | 5 | 645 | 1,553 | 11,396 | 8,778 | 89 | 9,904 | 9,950 | -1% | | | | |
| 5 | UH COMMUNITY COLLEGES | 15,482 | 0 | 1,782 | 4,017 | 43 | 5,842 | 4,019 | 794 | 794 | 235 | 706 | 622 | 2 | 727 | 407 | 8,072 | 6,656 | NOT | A | V | A | I | L | A | B |
| | Benchmark Group Average | 11,798 | 0 | 2,192 | 5,497 | 219 | 7,909 | 4,560 | 956 | 571 | 163 | 1,515 | 827 | 2 | 216 | 940 | 9,587 | 8,314 | 100 | 8,325 | 6,465 | 29% | | | | |
| 6 | Hawai'i Community College 2/ | 1,598 | 0 | 1,503 | 4,017 | 1 | 5,521 | 4,535 | 830 | 305 | 38 | 1,073 | 0 | 1 | 665 | 971 | 8,380 | 6,591 | 95 | 6,938 | 7,900 | -12% | | | | |
| | Peer Group Average | 2,011 | 0 | 1,802 | 5,806 | 107 | 7,714 | 4,132 | 824 | 831 | 180 | 1,228 | 769 | 5 | 216 | 1,304 | 9,309 | 7,675 | 90 | 8,518 | 7,740 | 10% | | | | |
| 7 | Honolulu Community College | 2,439 | 0 | 1,783 | 4,698 | 45 | 6,525 | 4,769 | 846 | 946 | 210 | 725 | 806 | 0 | 725 | 448 | 9,265 | 7,808 | 104 | 7,508 | 7,500 | 0% | | | | |
| | Peer Group Average | 2,580 | 0 | 1,632 | 4,873 | 85 | 6,591 | 3,773 | 719 | 573 | 152 | 1,143 | 771 | 6 | 81 | 984 | 8,050 | 6,934 | 95 | 7,258 | 7,309 | -1% | | | | |
| 8 | Kapi'olani Community College | 4,264 | 0 | 2,084 | 3,510 | 29 | 5,624 | 3,811 | 552 | 623 | 226 | 463 | 559 | 0 | 574 | 304 | 6,886 | 5,817 | 104 | 5,594 | 6,800 | -18% | | | | |
| | Peer Group Average | 3,886 | 0 | 1,945 | 3,999 | 154 | 6,098 | 3,228 | 754 | 645 | 152 | 1,070 | 771 | 1 | 381 | 903 | 7,753 | 6,302 | 96 | 6,545 | 6,882 | -5% | | | | |
| 9 | Kaua'i Community College | 824 | 0 | 1,199 | 6,507 | 17 | 7,723 | 5,406 | 1,073 | 1,630 | 514 | 1,577 | 1,308 | 3 | 2,280 | 500 | 13,777 | 9,817 | 103 | 9,531 | 9,500 | 0% | | | | |
| | Peer Group Average | 1,072 | 0 | 1,608 | 5,177 | 147 | 6,932 | 4,175 | 1,024 | 788 | 199 | 1,384 | 873 | 1 | 176 | 1,026 | 9,447 | 8,161 | 87 | 9,402 | 9,000 | 4% | | | | |
| 10 | Leeward Community College | 3,807 | 0 | 1,604 | 3,314 | 79 | 4,996 | 3,261 | 612 | 812 | 211 | 342 | 620 | 4 | 516 | 197 | 6,364 | 5,437 | 104 | 5,228 | 6,900 | -24% | | | | |
| | Peer Group Average | 4,762 | 0 | 1,269 | 3,729 | 161 | 5,159 | 2,913 | 768 | 568 | 152 | 860 | 623 | 3 | 169 | 877 | 6,781 | 5,616 | 98 | 5,762 | 6,762 | -15% | | | | |
| 11 | Maui Community College | 1,637 | 0 | 2,180 | 4,407 | 73 | 6,660 | 4,318 | 1,150 | 916 | 287 | 1,222 | 694 | 11 | 1,015 | 426 | 9,751 | 7,852 | 97 | 8,095 | 7,900 | 2% | | | | |
| | Peer Group Average | 1,783 | 0 | 1,454 | 4,910 | 67 | 6,431 | 3,265 | 976 | 766 | 194 | 1,282 | 843 | 1 | 188 | 1,096 | 8,416 | 7,013 | 88 | 7,908 | 7,953 | 0% | | | | |
| 12 | Windward Community College 3/ | 913 | 0 | 1,415 | 4,546 | 1 | 5,962 | 3,446 | 1,601 | 994 | 438 | 961 | 775 | 0 | 513 | 551 | 8,841 | 7,525 | 104 | 7,236 | 9,500 | -24% | | | | |
| | Peer Group Average | 1,291 | 0 | 2,163 | 4,647 | 117 | 6,926 | 3,475 | 901 | 736 | 256 | 1,535 | 723 | 0 | 123 | 1,016 | 8,510 | 7,291 | 93 | 7,857 | 8,786 | -11% | | | | |

| | | | | | | | | | | | | | | | | | | | | | | |
|----------------|-----------------|---------------|-----------|--------------|---------------|--------------|---------------|---------------|--------------|--------------|--------------|--------------|--------------|---------------|--------------|------------|---------------|---------------|------------|---------------|---------------|-------------|
| HIGH | UH | 14,173 | 31 | 4,655 | 11,809 | 1,687 | 18,150 | 11,582 | 1,601 | 2,637 | 1,011 | 1,577 | 1,821 | 10,226 | 2,280 | 971 | 30,463 | 15,297 | 104 | 13,826 | 13,200 | 35% |
| AVERAGE | Campuses | 3,228 | 4 | 2,146 | 5,517 | 214 | 7,876 | 5,420 | 1,057 | 1,132 | 426 | 928 | 865 | 1,041 | 994 | 531 | 11,967 | 8,806 | 101 | 8,615 | 9,040 | -5% |
| LOW | | 397 | 0 | 1,199 | 3,314 | 1 | 4,996 | 3,261 | 552 | 305 | 38 | 342 | 0 | 0 | 0 | 197 | 6,364 | 5,437 | 95 | 5,228 | 6,800 | -30% |

1/ Library is included in Academic Support.

2/ Due to fiscal interconnections between Hawai'i CC and UH Hilo, revenue and expenditure items at Hawai'i CC may have been included with Hilo.

Therefore, figures for UH Hilo may be overstated and figures for Hawai'i CC may be understated.

3/ For Windward Community College, the amount shown here for student financial aid has been updated from what was reported on the IPEDS Financial Survey.

Note: There are no peer or benchmark groups for the UH system. There is no benchmark group for UH-West O'ahu.

Source: Research Associates of Washington.

**Table 5
UNIVERSITY OF HAWAII
REVENUES & EXPENDITURES, PER FTE STUDENT
FISCAL YEAR 1997-98
Percent Distribution**

| | INSTITUTION | ENROLLMENT | | REVENUES PER FTE STUDENT | | | | EXPENDITURES PER FTE STUDENT | | | | | | | | | | FULL INSTR EXPEND PER FTE STUDENT | | |
|----|------------------------------------|---------------|-----------|--------------------------|-------------|----------|-------------|------------------------------|-------------|-------------|------------|---------------|------------|-------------|------------|-------------|-------------|-----------------------------------|------------|---------------------|
| | | % FTE | Grad | Tuition & Fees | Priv Approp | GC Endow | TOTAL REV | Instruc- tion | Student Svc | Acad Sup 1/ | Library 1/ | Inst'l Supprt | Oper Maint | Funded Rsch | Public Svc | Student Aid | TOTAL EXP | Estm Instr | Full Instr | Adjusted Full Instr |
| 1 | UNIVERSITY OF HAWAII | 32,280 | 14 | 27 | 66 | 7 | 100% | 41 | 5 | 9 | 3 | 4 | 6 | 24 | 7 | 3 | 100% | 56 | NA | |
| 2 | University Of Hawai'i at Manoa | 14,173 | 31 | 26 | 65 | 9 | 100% | 38 | 4 | 9 | 3 | 2 | 6 | 34 | 6 | 2 | 100% | 50 | 45 | |
| | Peer Group Average | 21,342 | 25 | 29 | 57 | 14 | 100% | 32 | 3 | 9 | 3 | 6 | 6 | 24 | 13 | 7 | 100% | 46 | 44 | |
| | Benchmark Group Average | 29,097 | 27 | 35 | 50 | 14 | 100% | 34 | 4 | 10 | 3 | 7 | 6 | 25 | 6 | 8 | 100% | 51 | 48 | |
| 3 | University of Hawai'i at Hilo 2/ | 2,228 | 7 | 28 | 70 | 2 | 100% | 45 | 9 | 8 | 4 | 8 | 12 | 1 | 11 | 6 | 100% | 78 | 82 | |
| | Peer Group Average | 2,793 | 3 | 41 | 56 | 3 | 100% | 39 | 10 | 10 | 4 | 14 | 11 | 1 | 2 | 13 | 100% | 80 | 82 | |
| | Benchmark Group Average | 3,175 | 6 | 40 | 58 | 2 | 100% | 42 | 9 | 10 | 4 | 12 | 10 | 1 | 3 | 14 | 100% | 80 | 86 | |
| 4 | University Of Hawai'i - West O'ahu | 397 | 0 | 29 | 71 | 0 | 100% | 59 | 12 | 11 | 6 | 10 | 3 | 0 | 0 | 5 | 100% | 95 | 91 | |
| | Peer Group Average | 670 | 3 | 39 | 56 | 5 | 100% | 39 | 12 | 9 | 3 | 11 | 11 | 0 | 5 | 13 | 100% | 78 | 86 | |
| 5 | UH COMMUNITY COLLEGES | 15,482 | 0 | 31 | 69 | 1 | 100% | 50 | 10 | 10 | 3 | 9 | 8 | 0 | 9 | 5 | 100% | 82 | NA | |
| | Benchmark Group Average | 11,798 | 0 | 29 | 68 | 3 | 100% | 48 | 10 | 6 | 2 | 16 | 9 | 0 | 2 | 10 | 100% | 87 | 87 | |
| 6 | Hawai'i Community College 2/ | 1,598 | 0 | 27 | 73 | 0 | 100% | 54 | 10 | 4 | 0 | 13 | 0 | 0 | 8 | 12 | 100% | 79 | 83 | |
| | Peer Group Average | 2,011 | 0 | 25 | 74 | 1 | 100% | 45 | 9 | 9 | 2 | 13 | 8 | 0 | 2 | 14 | 100% | 82 | 92 | |
| 7 | Honolulu Community College | 2,439 | 0 | 27 | 72 | 1 | 100% | 51 | 9 | 10 | 2 | 8 | 9 | 0 | 8 | 5 | 100% | 84 | 81 | |
| | Peer Group Average | 2,580 | 0 | 25 | 74 | 1 | 100% | 47 | 9 | 7 | 2 | 14 | 10 | 0 | 1 | 12 | 100% | 86 | 91 | |
| 8 | Kapi'olani Community College | 4,264 | 0 | 37 | 62 | 1 | 100% | 55 | 8 | 9 | 3 | 7 | 8 | 0 | 8 | 4 | 100% | 84 | 81 | |
| | Peer Group Average | 3,886 | 0 | 32 | 66 | 2 | 100% | 42 | 10 | 8 | 2 | 14 | 10 | 0 | 5 | 12 | 100% | 81 | 85 | |
| 9 | Kaua'i Community College | 824 | 0 | 16 | 84 | 0 | 100% | 39 | 8 | 12 | 4 | 11 | 9 | 0 | 17 | 4 | 100% | 71 | 69 | |
| | Peer Group Average | 1,072 | 0 | 26 | 72 | 2 | 100% | 45 | 11 | 8 | 2 | 14 | 9 | 0 | 2 | 11 | 100% | 86 | 99 | |
| 10 | Leeward Community College | 3,807 | 0 | 32 | 66 | 2 | 100% | 51 | 10 | 13 | 3 | 5 | 10 | 0 | 8 | 3 | 100% | 85 | 82 | |
| | Peer Group Average | 4,762 | 0 | 26 | 71 | 3 | 100% | 43 | 11 | 9 | 2 | 12 | 9 | 0 | 2 | 13 | 100% | 83 | 85 | |
| 11 | Maui Community College | 1,637 | 0 | 33 | 66 | 1 | 100% | 44 | 12 | 9 | 3 | 13 | 7 | 0 | 10 | 4 | 100% | 81 | 83 | |
| | Peer Group Average | 1,783 | 0 | 24 | 75 | 1 | 100% | 40 | 11 | 9 | 2 | 15 | 10 | 0 | 2 | 13 | 100% | 83 | 94 | |
| 12 | Windward Community College | 913 | 0 | 24 | 76 | 0 | 100% | 39 | 18 | 11 | 5 | 11 | 9 | 0 | 6 | 6 | 100% | 85 | 82 | |
| | Peer Group Average | 1,291 | 0 | 36 | 62 | 2 | 100% | 41 | 10 | 9 | 3 | 18 | 9 | 0 | 1 | 12 | 100% | 86 | 92 | |

| | | | | | | | | | | | | | | | | | | | | |
|----------------|-----------------|---------------|-----------|-----------|-----------|----------|----------|-----------|-----------|-----------|----------|-----------|-----------|-----------|-----------|-----------|----------|-----------|-----------|--|
| HIGH | UH | 14,173 | 31 | 37 | 84 | 9 | 1 | 59 | 18 | 13 | 6 | 13 | 12 | 34 | 17 | 12 | 1 | 95 | 91 | |
| AVERAGE | Campuses | 3,228 | 4 | 28 | 71 | 2 | 1 | 48 | 10 | 10 | 3 | 9 | 7 | 3 | 8 | 5 | 1 | 79 | 78 | |
| LOW | | 397 | 0 | 16 | 62 | 0 | 1 | 38 | 4 | 4 | 0 | 2 | 0 | 0 | 0 | 2 | 1 | 50 | 45 | |

1/ Library is included in Academic Support.

2/ Due to fiscal interconnections between Hawai'i CC and UH Hilo, revenue and expenditure items at Hawai'i CC may have been included with Hilo.

Therefore, figures for UH Hilo may be overstated and figures for Hawai'i CC may be understated.

Note: There are no peer or benchmark groups for the UH system. There is no benchmark group for UH-West O'ahu.

Source: Research Associates of Washington.

Table 6
UNIVERSITY OF HAWAI'I
REVENUES & EXPENDITURES, PER FTE STUDENT
FISCAL YEAR 1997-98
Includes Systemwide Revenues and Expenditures 1/

| | INSTITUTION | ENROLLMENT | | REVENUES PER FTE STUDENT | | | | EXPENDITURES PER FTE STUDENT | | | | | | | | | | FULL INSTR EXPEND PER FTE STUDENT | | | | |
|----|------------------------------------|---------------|-----------|--------------------------|---------------|---------------|---------------|------------------------------|--------------|--------------|--------------|---------------|--------------|---------------|--------------|-------------|---------------|-----------------------------------|----------------------|---------------------|---------------|------------|
| | | FTE | % Grad | Tuition & Fees | Approp | Priv GC Endow | TOTAL REV | Instruc-tion | Student Svc | Acad Sup 2/ | Library 2/ | Inst'l Supprt | Oper Maint | Funded Rsch | Public Svc | Student Aid | TOTAL EXP | Estm Full Instr | HEWI | Adjusted Full Instr | Norm | Devia-tion |
| 1 | UNIVERSITY OF HAWAI'I | 32,280 | 14 | 3,111 | 8,435 | 776 | 12,322 | 7,577 | 1,014 | 1,876 | 611 | 1,499 | 1,255 | 4,502 | 1,326 | 499 | 19,546 | 11,471 | NOT AVAILABLE | | | |
| 2 | University Of Hawai'i at Manoa | 14,173 | 31 | 4,655 | 12,894 | 1,687 | 19,236 | 11,582 | 1,160 | 3,007 | 1,011 | 1,158 | 1,759 | 10,226 | 1,959 | 533 | 31,384 | 15,770 | 104 | 14,254 | NOT AVAILABLE | |
| | Peer Group Average | 21,342 | 25 | 4,986 | 10,336 | 2,734 | 18,057 | 8,486 | 836 | 2,449 | 771 | 1,618 | 1,620 | 6,111 | 3,394 | 1,699 | 26,214 | 12,158 | 95 | 11,474 | 10,929 | 5% |
| | Benchmark Group Average | 29,097 | 27 | 6,328 | 9,577 | 2,872 | 18,777 | 9,291 | 1,011 | 2,836 | 818 | 1,787 | 1,731 | 6,995 | 1,581 | 2,111 | 27,344 | 13,828 | 99 | 12,643 | 10,844 | 17% |
| 3 | University of Hawai'i at Hilo 3/ | 2,228 | 7 | 2,654 | 7,221 | 198 | 10,073 | 7,112 | 1,511 | 1,528 | 684 | 2,377 | 1,826 | 152 | 1,693 | 903 | 17,102 | 13,344 | 95 | 14,046 | NOT AVAILABLE | |
| | Peer Group Average | 2,793 | 3 | 3,935 | 6,007 | 305 | 10,247 | 4,446 | 1,175 | 1,088 | 464 | 1,699 | 1,258 | 110 | 263 | 1,571 | 11,610 | 9,205 | 97 | 9,476 | 8,352 | 13% |
| | Benchmark Group Average | 3,175 | 6 | 3,224 | 4,884 | 173 | 8,281 | 4,046 | 847 | 924 | 392 | 1,221 | 950 | 90 | 293 | 1,293 | 9,664 | 7,780 | 94 | 8,251 | 8,723 | -5% |
| 4 | University Of Hawai'i - West O'ahu | 397 | 0 | 2,380 | 6,277 | 8 | 8,665 | 5,961 | 1,259 | 1,270 | 645 | 1,876 | 313 | 12 | 0 | 489 | 11,180 | 10,673 | 104 | 10,263 | NOT AVAILABLE | |
| | Peer Group Average | 670 | 3 | 3,630 | 5,268 | 438 | 9,335 | 4,247 | 1,381 | 1,001 | 311 | 1,333 | 1,231 | 5 | 645 | 1,553 | 11,396 | 8,778 | 89 | 9,904 | 9,950 | -1% |
| 5 | UH COMMUNITY COLLEGES | 15,482 | 0 | 1,782 | 4,584 | 44 | 6,410 | 4,019 | 803 | 905 | 235 | 1,674 | 736 | 2 | 727 | 410 | 9,276 | 7,702 | NOT AVAILABLE | | | |
| | Benchmark Group Average | 11,798 | 0 | 2,192 | 5,497 | 219 | 7,909 | 4,560 | 956 | 571 | 163 | 1,515 | 827 | 2 | 216 | 940 | 9,587 | 8,314 | 100 | 8,325 | 6,465 | 29% |
| 6 | Hawai'i Community College 3/ | 1,598 | 0 | 1,503 | 4,584 | 1 | 6,088 | 4,535 | 839 | 348 | 38 | 2,543 | 0 | 1 | 665 | 977 | 9,908 | 7,946 | 95 | 8,364 | NOT AVAILABLE | |
| | Peer Group Average | 2,011 | 0 | 1,802 | 5,806 | 107 | 7,714 | 4,132 | 824 | 831 | 180 | 1,228 | 769 | 5 | 216 | 1,304 | 9,309 | 7,675 | 90 | 8,518 | 7,740 | 10% |
| 7 | Honolulu Community College | 2,439 | 0 | 1,783 | 5,361 | 46 | 7,190 | 4,769 | 854 | 1,079 | 210 | 1,718 | 953 | 0 | 725 | 451 | 10,549 | 8,945 | 104 | 8,601 | NOT AVAILABLE | |
| | Peer Group Average | 2,580 | 0 | 1,632 | 4,873 | 85 | 6,591 | 3,773 | 719 | 573 | 152 | 1,143 | 771 | 6 | 81 | 984 | 8,050 | 6,934 | 95 | 7,258 | 7,309 | -1% |
| 8 | Kapi'olani Community College | 4,264 | 0 | 2,084 | 4,006 | 30 | 6,120 | 3,811 | 558 | 710 | 226 | 1,097 | 661 | 0 | 574 | 306 | 7,717 | 6,550 | 104 | 6,298 | NOT AVAILABLE | |
| | Peer Group Average | 3,886 | 0 | 1,945 | 3,999 | 154 | 6,098 | 3,228 | 754 | 645 | 152 | 1,070 | 771 | 1 | 381 | 903 | 7,753 | 6,302 | 96 | 6,545 | 6,882 | -5% |
| 9 | Kaua'i Community College | 824 | 0 | 1,199 | 7,426 | 18 | 8,643 | 5,406 | 1,084 | 1,859 | 514 | 3,737 | 1,546 | 3 | 2,280 | 504 | 16,419 | 11,773 | 103 | 11,431 | NOT AVAILABLE | |
| | Peer Group Average | 1,072 | 0 | 1,608 | 5,177 | 147 | 6,932 | 4,175 | 1,024 | 788 | 199 | 1,384 | 873 | 1 | 176 | 1,026 | 9,447 | 8,161 | 87 | 9,402 | 9,000 | 4% |
| 10 | Leeward Community College | 3,807 | 0 | 1,604 | 3,781 | 81 | 5,466 | 3,261 | 618 | 926 | 211 | 810 | 733 | 4 | 516 | 198 | 7,066 | 6,056 | 104 | 5,823 | NOT AVAILABLE | |
| | Peer Group Average | 4,762 | 0 | 1,269 | 3,729 | 161 | 5,159 | 2,913 | 768 | 568 | 152 | 860 | 623 | 3 | 169 | 877 | 6,781 | 5,616 | 98 | 5,762 | 6,762 | -15% |
| 11 | Maui Community College | 1,637 | 0 | 2,180 | 5,029 | 75 | 7,284 | 4,318 | 1,161 | 1,044 | 287 | 2,896 | 820 | 11 | 1,015 | 429 | 11,694 | 9,488 | 95 | 9,988 | NOT AVAILABLE | |
| | Peer Group Average | 1,783 | 0 | 1,454 | 4,910 | 67 | 6,431 | 3,265 | 976 | 766 | 194 | 1,282 | 843 | 1 | 188 | 1,096 | 8,416 | 7,013 | 88 | 7,908 | 7,953 | 0% |
| 12 | Windward Community College | 913 | 0 | 1,415 | 5,188 | 1 | 6,604 | 3,446 | 1,618 | 1,133 | 438 | 2,276 | 916 | 0 | 513 | 555 | 10,457 | 8,991 | 104 | 8,645 | NOT AVAILABLE | |
| | Peer Group Average | 1,291 | 0 | 2,163 | 4,647 | 117 | 6,926 | 3,475 | 901 | 736 | 256 | 1,535 | 723 | 0 | 123 | 1,016 | 8,510 | 7,291 | 93 | 7,857 | 8,786 | -11% |
| | HIGH UH | 14,173 | 31 | 4,655 | 12,894 | 1,687 | 19,236 | 11,582 | 1,618 | 3,007 | 1,011 | 3,737 | 1,826 | 10,226 | 2,280 | 977 | 31,384 | 15,770 | 104 | 14,254 | - | - |
| | AVERAGE Campuses | 3,228 | 4 | 2,146 | 6,177 | 215 | 8,537 | 5,420 | 1,066 | 1,290 | 426 | 2,049 | 953 | 1,041 | 994 | 535 | 13,348 | 9,954 | 101 | 9,771 | - | - |
| | LOW | 397 | 0 | 1,199 | 3,781 | 1 | 5,466 | 3,261 | 558 | 348 | 38 | 810 | 0 | 0 | 0 | 198 | 7,066 | 6,056 | 95 | 5,823 | - | - |

1/ Comparable system costs are unavailable for peer or benchmark institutions.

2/ Library is included in Academic Support.

3/ Due to fiscal interconnections between Hawai'i CC and UH Hilo, revenue and expenditure items at Hawai'i CC may have been included with Hilo.

Therefore, figures for UH Hilo may be overstated and figures for Hawai'i CC may be understated.

Note: There are no peer or benchmark groups for the UH system. There is no benchmark group for UH-West O'ahu.

Source: Research Associates of Washington.

**Table 7
UNIVERSITY OF HAWAII'
REVENUES & EXPENDITURES, PER FTE STUDENT
FISCAL YEAR 1997-98
Percent Distribution
Includes Systemwide Revenues and Expenditures 1/**

| | INSTITUTION | ENROLLMENT | | REVENUES PER FTE STUDENT | | | | EXPENDITURES PER FTE STUDENT | | | | | | | | | | FULL INSTR EXPEND PER FTE STUDENT | |
|----|------------------------------------|---------------|-----------|--------------------------|-----------|---------------|-------------|------------------------------|-------------|-------------|------------|---------------|------------|-------------|------------|-------------|-------------|-----------------------------------|---------------------|
| | | FTE | % Grad | Tuition & Fees | Approp | Priv GC Endow | TOTAL REV | Instruc- tion | Student Svc | Acad Sup 2/ | Library 2/ | Inst'l Supprt | Oper Maint | Funded Rsch | Public Svc | Student Aid | TOTAL EXP | Estm Full Instr | Adjusted Full Instr |
| | | | | | | | | | | | | | | | | | | | |
| 1 | UNIVERSITY OF HAWAII' | 32,280 | 14 | 25 | 68 | 6 | 100% | 39 | 5 | 10 | 3 | 8 | 6 | 23 | 7 | 3 | 100% | 59 | NA |
| 2 | University Of Hawai'i at Manoa | 14,173 | 31 | 24 | 67 | 9 | 100% | 37 | 4 | 10 | 3 | 4 | 6 | 33 | 6 | 2 | 100% | 45 | 45 |
| | Peer Group Average | 21,342 | 25 | 29 | 57 | 14 | 100% | 32 | 3 | 9 | 3 | 6 | 6 | 24 | 13 | 7 | 100% | 46 | 44 |
| | Benchmark Group Average | 29,097 | 27 | 35 | 50 | 14 | 100% | 34 | 4 | 10 | 3 | 7 | 6 | 25 | 6 | 8 | 100% | 51 | 48 |
| 3 | University of Hawai'i at Hilo 3/ | 2,228 | 7 | 26 | 72 | 2 | 100% | 42 | 9 | 9 | 4 | 14 | 11 | 1 | 10 | 5 | 100% | 78 | 82 |
| | Peer Group Average | 2,793 | 3 | 41 | 56 | 3 | 100% | 39 | 10 | 10 | 4 | 14 | 11 | 1 | 2 | 13 | 100% | 80 | 82 |
| | Benchmark Group Average | 3,175 | 6 | 40 | 58 | 2 | 100% | 42 | 9 | 10 | 4 | 12 | 10 | 1 | 3 | 14 | 100% | 80 | 86 |
| 4 | University Of Hawai'i - West O'ahu | 397 | 0 | 27 | 72 | 0 | 100% | 53 | 11 | 11 | 6 | 17 | 3 | 0 | 0 | 4 | 100% | 95 | 92 |
| | Peer Group Average | 670 | 3 | 39 | 56 | 5 | 100% | 39 | 12 | 9 | 3 | 11 | 11 | 0 | 5 | 13 | 100% | 78 | 86 |
| 5 | UH COMMUNITY COLLEGES | 15,482 | 0 | 28 | 72 | 1 | 100% | 43 | 9 | 10 | 3 | 18 | 8 | 0 | 8 | 4 | 100% | 83 | NA |
| | Benchmark Group Average | 11,798 | 0 | 29 | 68 | 3 | 100% | 48 | 10 | 6 | 2 | 16 | 9 | 0 | 2 | 10 | 100% | 87 | 87 |
| 6 | Hawai'i Community College 3/ | 1,598 | 0 | 25 | 75 | 0 | 100% | 46 | 8 | 4 | 0 | 26 | 0 | 0 | 7 | 10 | 100% | 80 | 84 |
| | Peer Group Average | 2,011 | 0 | 25 | 74 | 1 | 100% | 45 | 9 | 9 | 2 | 13 | 8 | 0 | 2 | 14 | 100% | 82 | 92 |
| 7 | Honolulu Community College | 2,439 | 0 | 25 | 75 | 1 | 100% | 45 | 8 | 10 | 2 | 16 | 9 | 0 | 7 | 4 | 100% | 85 | 82 |
| | Peer Group Average | 2,580 | 0 | 25 | 74 | 1 | 100% | 47 | 9 | 7 | 2 | 14 | 10 | 0 | 1 | 12 | 100% | 86 | 91 |
| 8 | Kapi'olani Community College | 4,264 | 0 | 34 | 65 | 0 | 100% | 49 | 7 | 9 | 3 | 14 | 9 | 0 | 7 | 4 | 100% | 85 | 82 |
| | Peer Group Average | 3,886 | 0 | 32 | 66 | 2 | 100% | 42 | 10 | 8 | 2 | 14 | 10 | 0 | 5 | 12 | 100% | 81 | 85 |
| 9 | Kaua'i Community College | 824 | 0 | 14 | 86 | 0 | 100% | 33 | 7 | 11 | 3 | 23 | 9 | 0 | 14 | 3 | 100% | 72 | 70 |
| | Peer Group Average | 1,072 | 0 | 26 | 72 | 2 | 100% | 45 | 11 | 8 | 2 | 14 | 9 | 0 | 2 | 11 | 100% | 86 | 99 |
| 10 | Leeward Community College | 3,807 | 0 | 29 | 69 | 1 | 100% | 46 | 9 | 13 | 3 | 11 | 10 | 0 | 7 | 3 | 100% | 86 | 82 |
| | Peer Group Average | 4,762 | | 26 | 71 | 3 | 100% | 43 | 11 | 9 | 2 | 12 | 9 | 0 | 2 | 13 | 100% | 83 | 85 |
| 11 | Maui Community College | 1,637 | 0 | 30 | 69 | 1 | 100% | 37 | 10 | 9 | 2 | 25 | 7 | 0 | 9 | 4 | 100% | 81 | 85 |
| | Peer Group Average | 1,783 | 0 | 24 | 75 | 1 | 100% | 40 | 11 | 9 | 2 | 15 | 10 | 0 | 2 | 13 | 100% | 83 | 94 |
| 12 | Windward Community College | 913 | 0 | 21 | 79 | 0 | 100% | 33 | 15 | 11 | 4 | 22 | 9 | 0 | 5 | 5 | 100% | 86 | 83 |
| | Peer Group Average | 1,291 | 0 | 36 | 62 | 2 | 100% | 41 | 10 | 9 | 3 | 18 | 9 | 0 | 1 | 12 | 100% | 86 | 92 |

| | | | | | | | | | | | | | | | | | | | |
|----------------|-----------------|---------------|-----------|-----------|-----------|----------|-------------|-----------|-----------|-----------|----------|-----------|-----------|-----------|-----------|-----------|-------------|-----------|-----------|
| HIGH | UH | 14,173 | 31 | 34 | 86 | 9 | 100% | 53 | 15 | 13 | 6 | 26 | 11 | 33 | 14 | 10 | 100% | 95 | 92 |
| AVERAGE | Campuses | 3,228 | 4 | 26 | 73 | 1 | 100% | 42 | 9 | 10 | 3 | 17 | 7 | 3 | 7 | 4 | 100% | 79 | 79 |
| LOW | | 397 | 0 | 14 | 65 | 0 | 100% | 33 | 4 | 4 | 0 | 4 | 0 | 0 | 0 | 2 | 100% | 45 | 45 |

1/ Comparable system costs are unavailable for peer or benchmark institutions.

2/ Library is included in Academic Support.

3/ Due to fiscal interconnections between Hawai'i CC and UH Hilo, revenue and expenditure items at Hawai'i CC may have been included with Hilo.

Therefore, figures for UH Hilo may be overstated and figures for Hawai'i CC may be understated.

Note: There are no peer or benchmark groups for the UH system. There is no benchmark group for UH-West O'ahu.

Source: Research Associates of Washington.

**Appendix 1
UNIVERSITY OF HAWAI'I
PEER & BENCHMARK GROUPS
FISCAL YEAR 1997-98**

University of Hawai'i at Manoa - Benchmark Group

| | STATE | CARNEGIE CLASSIFICATION | NAME | CITY | FICE CODE | ENROLLMENT | |
|----|-------|--------------------------------|---|-----------------|-------------|---------------|-----------|
| | | | | | | FTE Enroll | % Grad |
| 1 | HI | Research Universities I | University Of Hawai'i at Manoa | Honolulu | 1610 | 14,173 | 31 |
| 2 | IN | Research Universities I | Indiana University at Bloomington | Bloomington | 1809 | 31,216 | 22 |
| 3 | MI | Research Universities I | Michigan State University | East Lansing | 2290 | 37,248 | 22 |
| 4 | NY | Research Universities I | State University of New York at Buffalo | Buffalo | 2837 | 19,654 | 34 |
| 5 | AZ | Research Universities I | University Of Arizona | Tucson | 1083 | 28,831 | 24 |
| 6 | CA | Research Universities I | University Of California - Berkeley | Berkeley | 1312 | 28,521 | 29 |
| 7 | CA | Research Universities I | University Of California - Davis | Davis | 1313 | 22,813 | 22 |
| 8 | CA | Research Universities I | University Of California - Los Angeles | Los Angeles | 1315 | 34,278 | 33 |
| 9 | CO | Research Universities I | University Of Colorado at Boulder | Boulder | 1370 | 23,904 | 21 |
| 10 | FL | Research Universities I | University Of Florida | Gainesville | 1535 | 37,704 | 24 |
| 11 | IL | Research Universities I | University Of Illinois Urbana-Champaign | Champaign | 1775 | 35,050 | 26 |
| 12 | IA | Research Universities I | University Of Iowa | Iowa City | 1892 | 24,125 | 33 |
| 13 | MD | Research Universities I | University Of Maryland College Park | College Park | 2103 | 27,917 | 25 |
| 14 | MI | Research Universities I | University Of Michigan, Ann Arbor | Ann Arbor | 2325 | 34,778 | 35 |
| 15 | MN | Research Universities I | University Of Minnesota - Twin Cities | Minneapolis | 3969 | 33,937 | 29 |
| 16 | MO | Research Universities I | University Of Missouri - Columbia | Columbia | 2516 | 20,154 | 23 |
| 17 | OR | Research Universities II | University Of Oregon | Eugene | 3223 | 16,035 | 21 |
| 18 | WA | Research Universities I | University Of Washington | Seattle | 3798 | 31,488 | 27 |
| 19 | WI | Research Universities I | University of Wisconsin - Madison | Madison | 3895 | 36,092 | 27 |

University of Hawai'i at Manoa - Peer Group

| | STATE | CARNEGIE CLASSIFICATION | NAME | CITY | FICE CODE | ENROLLMENT | |
|----|-------|--------------------------------|---|-----------------|-------------|---------------|-----------|
| | | | | | | FTE Enroll | % Grad |
| 1 | HI | Research Universities I | University Of Hawai'i at Manoa | Honolulu | 1610 | 14,173 | 31 |
| 2 | CO | Research Universities I | Colorado State University | Fort Collins | 1350 | 21,734 | 24 |
| 3 | IA | Research Universities I | Iowa State University | Ames | 1869 | 22,853 | 18 |
| 4 | LA | Research Universities I | Louisiana St Univ & Ag & Mech Coll | Baton Rouge | 2010 | 25,085 | 21 |
| 5 | OR | Research Universities I | Oregon State University | Corvallis | 3210 | 13,227 | 19 |
| 6 | CA | Research Universities I | University Of California - Davis | Davis | 1313 | 22,813 | 22 |
| 7 | GA | Research Universities I | University Of Georgia | Athens | 1598 | 26,992 | 22 |
| 8 | KY | Research Universities I | University Of Kentucky | Lexington | 1989 | 20,227 | 28 |
| 9 | MO | Research Universities I | University Of Missouri - Columbia | Columbia | 2516 | 20,154 | 23 |
| 10 | NC | Research Universities I | University of North Carolina at Chapel Hill | Chapel Hill | 2974 | 21,349 | 37 |
| 11 | TN | Research Universities I | University Of Tennessee, Knoxville | Knoxville | 3530 | 22,042 | 25 |
| 12 | UT | Research Universities I | University Of Utah | Salt Lake City | 3675 | 20,349 | 19 |
| 13 | VA | Research Universities I | University Of Virginia - Main Campus | Charlottesville | 6968 | 19,283 | 40 |

Appendix 1 (cont.)

University of Hawai'i at Hilo - Benchmark Group

| | STATE | CARNEGIE CLASSIFICATION | NAME | CITY | FICE CODE | ENROLLMENT | |
|----|-------|-------------------------------------|--|--------------------|-------------|--------------|----------|
| | | | | | | FTE Enroll | % Grad |
| 1 | HI | Baccalaureate Colleges II | University of Hawaii at Hilo | Hilo | 1611 | 2,228 | 7 |
| 2 | AR | Master's Colleges & Universities I | Arkansas Tech University | Russellville | 1089 | 3,624 | 4 |
| 3 | GA | Master's Colleges & Universities I | Armstrong Atlantic State University 1/ | Savannah | 1546 | 4,215 | 10 |
| 4 | VA | Baccalaureate Colleges II | Christopher Newport University | Newport News | 3706 | 3,771 | 4 |
| 5 | SC | Baccalaureate Colleges II | Coastal Carolina University 2/ | Conway | 3451 | 3,834 | 3 |
| 6 | OK | Master's Colleges & Universities I | East Central University | Ada | 3154 | 3,558 | 17 |
| 7 | NC | Master's Colleges & Universities I | Fayetteville State University | Fayetteville | 2928 | 3,463 | 17 |
| 8 | CO | Baccalaureate Colleges II | Fort Lewis College | Durango | 1353 | 4,184 | 0 |
| 9 | SC | Master's Colleges & Universities II | Francis Marion University | Florence | 9226 | 2,945 | 13 |
| 10 | AR | Master's Colleges & Universities I | Henderson State University | Arkadelphia | 1098 | 3,165 | 11 |
| 11 | IN | Master's Colleges & Universities II | Indiana University Kokomo | Kokomo | 1814 | 1,714 | 12 |
| 12 | MI | Master's Colleges & Universities II | Lake Superior State University | Sault Sainte Marie | 2293 | 2,778 | 4 |
| 13 | PA | Baccalaureate Colleges II | Lock Haven University of Pennsylvania | Lock Haven | 3323 | 3,393 | 2 |
| 14 | VA | Master's Colleges & Universities II | Longwood College | Farmville | 3719 | 3,054 | 12 |
| 15 | VA | Master's Colleges & Universities II | Mary Washington College | Fredericksburg | 3746 | 3,334 | 1 |
| 16 | MA | Baccalaureate Colleges II | Massachusetts College of Liberal Arts 3/ | North Adams | 2187 | 1,353 | 8 |
| 17 | ND | Master's Colleges & Universities I | Minot State University | Minot | 2994 | 2,900 | 5 |
| 18 | MO | Baccalaureate Colleges II | Missouri Western State College | Saint Joseph | 2490 | 4,209 | 0 |
| 19 | NJ | Baccalaureate Colleges II | Ramapo College of New Jersey | Mahwah | 9344 | 3,466 | 3 |
| 20 | WV | Baccalaureate Colleges II | Shepherd College | Shepherdstown | 3822 | 3,092 | 0 |
| 21 | LA | Master's Colleges & Universities II | Southern University at New Orleans | New Orleans | 2026 | 3,322 | 7 |
| 22 | NY | Baccalaureate Colleges II | SUNY College at Old Westbury | Old Westbury | 7109 | 3,056 | 0 |
| 23 | NC | Baccalaureate Colleges II | University of North Carolina at Asheville | Asheville | 2907 | 2,560 | 1 |
| 24 | SC | Baccalaureate Colleges II | University of South Carolina - Spartanburg | Spartanburg | 6951 | 2,784 | 9 |
| 25 | CO | Baccalaureate Colleges II | Western State College | Gunnison | 1372 | 2,430 | 0 |

1/ Formerly called Armstrong State College.

2/ Formerly called USC Coastal Carolina College.

3/ Formerly called North Adams State College.

Appendix 1 (cont.)

University of Hawai'i at Hilo - Peer Group

| | STATE | CARNEGIE CLASSIFICATION | NAME | CITY | FICE CODE | ENROLLMENT | |
|----|-------|-------------------------------------|---|-------------------|-------------|--------------|----------|
| | | | | | | FTE Enroll | % Grad |
| 1 | HI | Baccalaureate Colleges II | University of Hawaii at Hilo | Hilo | 1611 | 2,228 | 7 |
| 2 | VA | Baccalaureate Colleges II | Christopher Newport University | Newport News | 3706 | 3,771 | 4 |
| 3 | CO | Baccalaureate Colleges II | Fort Lewis College | Durango | 1353 | 4,184 | 0 |
| 4 | PA | Baccalaureate Colleges II | Lock Haven University of Pennsylvania | Lock Haven | 3323 | 3,393 | 2 |
| 5 | VA | Master's Colleges & Universities II | Longwood College | Farmville | 3719 | 3,054 | 12 |
| 6 | VA | Master's Colleges & Universities II | Mary Washington College | Fredericksburg | 3746 | 3,334 | 1 |
| 7 | MA | Baccalaureate Colleges II | Massachusetts College of Liberal Arts 1/ | North Adams | 2187 | 1,353 | 8 |
| 8 | NY | Baccalaureate Colleges II | Purchase College, SUNY | Purchase | 6791 | 2,747 | 3 |
| 9 | NJ | Baccalaureate Colleges II | Ramapo College of New Jersey | Mahwah | 9344 | 3,466 | 3 |
| 10 | MD | Baccalaureate Colleges I | St. Mary's College of Maryland | Saint Mary's City | 2095 | 1,560 | 0 |
| 11 | GA | Baccalaureate Colleges II | Savannah State University 2/ | Savannah | 1590 | 2,504 | 3 |
| 12 | MN | Baccalaureate Colleges II | Southwest State University | Marshall | 2375 | 2,214 | 7 |
| 13 | NY | Baccalaureate Colleges II | SUNY College at old Westbury | Old Westbury | 7109 | 3,056 | 0 |
| 14 | MN | Baccalaureate Colleges I | University of Minnesota - Morris | Morris | 2389 | 1,872 | 0 |
| 15 | NC | Baccalaureate Colleges I | University of North Carolina at Asheville | Asheville | 2907 | 2,560 | 1 |
| 16 | PA | Baccalaureate Colleges II | University of Pittsburgh Johnstown Campus | Johnstown | 3382 | 2,826 | 0 |

1/ Formerly called North Adams State College.
 2/ Formerly called Savannah State College.

University of Hawai'i - West O'ahu - Peer Group

| | STATE | CARNEGIE CLASSIFICATION | NAME | CITY | FICE CODE | ENROLLMENT | |
|---|-------|---------------------------|--|-------------|-----------|---------------|--------|
| | | | | | | FTE Enroll | % Grad |
| 1 | HI | Baccalaureate Colleges II | University Of Hawai'i - West Oahu | Pearl City | 21078 | 397 | 0 |
| 2 | CT | Baccalaureate Colleges II | Charter Oak State College 1/ | New Britain | 32343 | Not Available | |
| 3 | ND | Baccalaureate Colleges II | Mayville State University | Mayville | 2993 | 639 | 0 |
| 4 | OH | Baccalaureate Colleges II | The Ohio State University at Marion | Marion | 3094 | 860 | 11 |
| 5 | ME | Baccalaureate Colleges II | University Of Maine At Fort Kent | Fort Kent | 2041 | 514 | 0 |
| 6 | ME | Baccalaureate Colleges II | University Of Maine At Machias | Machias | 2055 | 667 | 0 |
| 7 | NH | Baccalaureate Colleges II | University of New Hampshire at Manchester 1/ | Manchester | 9009 | Not Available | |

1/ Data not available for FY 1997-98.

Appendix 1 (cont.)

University of Hawai'i Community Colleges - Benchmark Group

| | STATE | CARNEGIE CLASSIFICATION | NAME | CITY | FICE CODE | ENROLLMENT | |
|----|-------|----------------------------------|---|--------------------|-----------|---------------|----------|
| | | | | | | FTE Enroll | % Grad |
| 1 | HI | Associate of Arts College | UH Community Colleges | State of HI | | 15,482 | 0 |
| 2 | IL | Associate of Arts College | College Of Du Page | Glen Ellyn | 6656 | 15,249 | 0 |
| 3 | OH | Associate of Arts College | Cuyahoga Community College District | Cleveland | 3040 | 11,379 | 0 |
| 4 | IA | Associate of Arts College | Kirkwood Community College | Cedar Rapids | 4076 | 7,624 | 0 |
| 5 | OR | Associate of Arts College | Lane Community College | Eugene | 3196 | 5,439 | 0 |
| 6 | AZ | Associate of Arts College | Mesa Community College | Mesa | 1077 | 11,998 | 0 |
| 7 | FL | Associate of Arts College | Miami-Dade Community College | Miami | 1506 | 26,306 | 0 |
| 8 | WI | Associate of Arts College | Milwaukee Area Technical College | Milwaukee | 3866 | 9,790 | 0 |
| 9 | MD | Associate of Arts College | Montgomery College 1/ | Rockville | 6911 | Not Available | |
| 10 | OR | Associate of Arts College | Mt. Hood Community College | Gresham | 3204 | 4,394 | 0 |
| 11 | NY | Associate of Arts College | Nassau Community College | Garden City | 2873 | 14,221 | 0 |
| 12 | OR | Associate of Arts College | Portland Community College | Portland | 3213 | 11,580 | 0 |
| 13 | MO | Associate of Arts College | Saint Louis Community College at Forest Park 1/ | Saint Louis | 2471 | Not Available | |
| 14 | CA | Associate of Arts College | San Francisco Community College District 1/ | San Francisco | 1167 | Not Available | |

1/ Data not available for FY 1997-98.

Hawai'i Community College - Peer Group

| | STATE | CARNEGIE CLASSIFICATION | NAME | CITY | FICE CODE | ENROLLMENT | |
|----|-------|----------------------------------|--------------------------------------|---------------|-------------|--------------|----------|
| | | | | | | FTE Enroll | % Grad |
| 1 | HI | Associate of Arts College | Hawai'i Community College | Hilo | 5258 | 1,598 | 0 |
| 2 | NC | Associate of Arts College | Catawba Valley Community College | Hickory | 5318 | 1,737 | 0 |
| 3 | NC | Associate of Arts College | Coastal Carolina Community College | Jacksonville | 5316 | 2048 | 0 |
| 4 | ID | Associate of Arts College | College Of Southern Idaho | Twin Falls | 1619 | 3144 | 0 |
| 5 | PA | Associate of Arts College | Community College Of Beaver County | Monaca | 6807 | 1460 | 0 |
| 6 | NC | Associate of Arts College | Lenoir Community College | Kinston | 2940 | 1242 | 0 |
| 7 | ID | Associate of Arts College | North Idaho College | Coeur d'Alene | 1623 | 2721 | 0 |
| 8 | NE | Associate of Arts College | Northeast Community College | Norfolk | 11667 | 2571 | 0 |
| 9 | AL | Associate of Arts College | Northwest-Shoals Community College | Muscle Shoals | 5697 | 2812 | 0 |
| 10 | SC | Associate of Arts College | Piedmont Technical College | Greenwood | 3992 | 2015 | 0 |
| 11 | NC | Associate of Arts College | Rockingham Community College | Wentworth | 2958 | 1092 | 0 |
| 12 | OR | Associate of Arts College | Rogue Community College | Grants Pass | 10182 | 1871 | 0 |
| 13 | NM | Associate of Arts College | San Juan College | Farmington | 2660 | 2431 | 0 |
| 14 | NY | Associate of Arts College | SUNY College Of Technology At Canton | Canton | 2855 | 1841 | 0 |
| 15 | OH | Associate of Arts College | Washington State Community College | Marietta | 10453 | 1425 | 0 |
| 16 | NC | Associate of Arts College | Wayne Community College | Goldsboro | 2980 | 1754 | 0 |

Appendix 1 (cont.)

Honolulu Community College - Peer Group

| | STATE | CARNEGIE CLASSIFICATION | NAME | CITY | FICE CODE | ENROLLMENT | |
|----|-------|----------------------------------|---|-----------------|-------------|---------------|----------|
| | | | | | | FTE Enroll | % Grad |
| 1 | HI | Associate of Arts College | Honolulu Community College | Honolulu | 5258 | 2,439 | 0 |
| 2 | NC | Associate of Arts College | Cape Fear Community College | Wilmington | 5318 | 2,580 | 0 |
| 3 | CA | Associate of Arts College | College Of Alameda 1/ | Alameda | 5316 | Not Available | |
| 4 | KS | Associate of Arts College | Cowley County Community College | Arkansas City | 1619 | 2193 | 0 |
| 5 | DE | Associate of Arts College | Delaware Technical & Community College Stanton-Wilmington Campus | Newark | 6807 | 3859 | 0 |
| 6 | AZ | Associate of Arts College | Eastern Arizona College | Thatcher | 2940 | 2606 | 0 |
| 7 | NC | Associate of Arts College | Gaston College | Dallas | 1623 | 2200 | 0 |
| 8 | PA | Associate of Arts College | Lehigh Carbon Community College 2/ | Schnecksville | 11667 | 2133 | 0 |
| 9 | MO | Associate of Arts College | Maple Woods Community College 1/ | Kansas City | 5697 | Not Available | |
| 10 | ID | Associate of Arts College | North Idaho College | Coeur d'Alene | 3992 | 2721 | 0 |
| 11 | NE | Associate of Arts College | Northeast Community College | Norfolk | 2958 | 2571 | 0 |
| 12 | WA | Associate of Arts College | South Seattle Community College | Seattle | 10182 | 2938 | 0 |
| 13 | OH | Associate of Arts College | Stark State College Of Technology 3/ | Canton | 2660 | 2480 | 0 |
| 14 | SC | Associate of Arts College | Tri-County Technical College | Pendleton | 2855 | 2099 | 0 |
| 15 | CA | Associate of Arts College | Victor Valley College 1/ | Victorville | 10453 | Not Available | |

1/ Data not available for FY 1997-98.

2/ Formerly Lehigh County Community College.

3/ Formerly Stark Technical College.

Kapi'olani Community College - Peer Group

| | STATE | CARNEGIE CLASSIFICATION | NAME | CITY | FICE CODE | ENROLLMENT | |
|----|-------|----------------------------------|---|-----------------|-------------|---------------|----------|
| | | | | | | FTE Enroll | % Grad |
| 1 | HI | Associate of Arts College | Kapi'olani Community College | Honolulu | 1613 | 4,264 | 0 |
| 2 | CA | Associate of Arts College | College of the Desert | Palm Desert | 1182 | 4,407 | 0 |
| 3 | NJ | Associate of Arts College | Gloucester County College | Sewell | 6901 | 3023 | 0 |
| 4 | MA | Associate of Arts College | Holyoke Community College | Holyoke | 2170 | 3382 | 0 |
| 5 | AL | Associate of Arts College | Jefferson State Community College | Birmingham | 1022 | 3544 | 0 |
| 6 | KS | Associate of Arts College | Kansas City Kansas Community College | Kansas City | 1925 | 2959 | 0 |
| 7 | OH | Associate of Arts College | Lorain County Community College | Elyria | 3068 | 4062 | 0 |
| 8 | CT | Associate of Arts College | Manchester Community Technical College 1 & 2/ | Manchester | 1392 | Not Available | |
| 9 | MA | Associate of Arts College | Middlesex Community College | Bedford | 9936 | 3746 | 0 |
| 10 | PA | Associate of Arts College | Montgomery County Community College | Blue Bell | 4452 | 4719 | 0 |
| 11 | NY | Associate of Arts College | Niagara County Community College | Sanborn | 2874 | 3688 | 0 |
| 12 | NY | Associate of Arts College | Orange County Community College | Middletown | 2876 | 3644 | 0 |
| 13 | IL | Associate of Arts College | Parkland College | Champaign | 7118 | 5161 | 0 |
| 14 | FL | Associate of Arts College | Pasco-Hernando Community College | New Port Richey | 10652 | 2851 | 0 |
| 15 | TN | Associate of Arts College | Roane State Community College | Harriman | 9914 | 3734 | 0 |
| 16 | MO | Associate of Arts College | Saint Louis Community College at Forest Park 1/ | Saint Louis | 2471 | Not Available | |
| 17 | AZ | Associate of Arts College | Scottsdale Community College | Scottsdale | 8304 | 5052 | 0 |
| 18 | WA | Associate of Arts College | Tacoma Community College | Tacoma | 3796 | 3795 | 0 |
| 19 | TN | Associate of Arts College | Volunteer State Community College | Gallatin | 9912 | 4352 | 0 |
| 20 | TN | Associate of Arts College | Walters State Community College | Morristown | 8863 | 3946 | 0 |

1/ Data not available for FY 1997-98.

2/ Formerly Manchester Community-Technical College.

Appendix 1 (cont.)

Kaua'i Community College - Peer Group

| | STATE | CARNEGIE CLASSIFICATION | NAME | CITY | FICE CODE | ENROLLMENT | |
|----|-------|----------------------------------|---|------------------|-------------|------------|----------|
| | | | | | | FTE Enroll | % Grad |
| 1 | HI | Associate of Arts College | Kaua'i Community College | Lihue | 1614 | 824 | 0 |
| 2 | MI | Associate of Arts College | Alpena Community College | Alpena | 2237 | 1,172 | 0 |
| 3 | NC | Associate of Arts College | Beaufort County Community College | Washington | 8558 | 826 | 0 |
| 4 | NC | Associate of Arts College | College of the Albemarle | Elizabeth City | 2917 | 1,250 | 0 |
| 5 | VA | Associate of Arts College | Dabney S. Lancaster Community College | Clifton Forge | 4996 | 836 | 0 |
| 6 | MI | Associate of Arts College | Glen Oaks Community College | Centreville | 2263 | 865 | 0 |
| 7 | OH | Associate of Arts College | Kent State University Tuscarawas Campus | New Philadelphia | 3062 | 1,000 | 0 |
| 8 | MI | Associate of Arts College | Kirtland Community College | Roscommon | 7171 | 792 | 0 |
| 9 | NC | Associate of Arts College | Mitchell Community College | Statesville | 2947 | 926 | 0 |
| 10 | AR | Associate of Arts College | North Arkansas College 1/ | Harrison | 12261 | 1,412 | 0 |
| 11 | NM | Associate of Arts College | Northern New Mexico Community College | Espanola | 20839 | 1,202 | 0 |
| 12 | WY | Associate of Arts College | Northern Wyoming Community College District | Sheridan | 3930 | 1,615 | 0 |
| 13 | NJ | Associate of Arts College | Salem Community College | Carneys Point | 5461 | 688 | 0 |
| 14 | IL | Associate of Arts College | Shawnee Community College | Ullin | 7693 | 1,259 | 0 |
| 15 | IA | Associate of Arts College | Southwestern Community College | Creston | 1857 | 857 | 0 |
| 16 | NE | Associate of Arts College | Western Nebraska Community College | Scottsbluff | 2560 | 1,207 | 0 |
| 17 | NC | Associate of Arts College | Wilkes Community College | Wilkesboro | 2983 | 1,247 | 0 |

1/ Formerly North Arkansas Community College.

Leeward Community College - Peer Group

| | STATE | CARNEGIE CLASSIFICATION | NAME | CITY | FICE CODE | ENROLLMENT | |
|----|-------|----------------------------------|-----------------------------------|-------------------|-------------|---------------|----------|
| | | | | | | FTE Enroll | % Grad |
| 1 | HI | Associate of Arts College | Leeward Community College | Pearl City | 4549 | 3,807 | 0 |
| 2 | IL | Associate of Arts College | Black Hawk College | Moline | 1638 | 4,091 | 0 |
| 3 | TX | Associate of Arts College | Brookhaven College | Farmers Branch | 21002 | 3981 | 0 |
| 4 | WA | Associate of Arts College | Columbia Basin College | Pasco | 3774 | 3623 | 0 |
| 5 | CA | Associate of Arts College | Cuesta College | San Luis Obispo | 1192 | 5105 | 0 |
| 6 | CA | Associate of Arts College | East Los Angeles College | Monterey Park | 22260 | 8453 | 0 |
| 7 | WA | Associate of Arts College | Edmonds Community College | Lynnwood | 5001 | 5191 | 0 |
| 8 | WA | Associate of Arts College | Green River Community College | Auburn | 3780 | 4835 | 0 |
| 9 | FL | Associate of Arts College | Gulf Coast Community College | Panama City | 1490 | 3536 | 0 |
| 10 | CA | Associate of Arts College | Hartnell College | Salinas | 1209 | 3551 | 0 |
| 11 | WA | Associate of Arts College | Highline Community College | Des Moines | 3781 | 5050 | 0 |
| 12 | MO | Associate of Arts College | Longview Community College 1/ | Lee's Summit | 9140 | Not Available | |
| 13 | TX | Associate of Arts College | Palo Alto College | San Antonio | 23413 | 3913 | 0 |
| 14 | AZ | Associate of Arts College | Paradise Valley Community College | Phoenix | 26236 | 2992 | 0 |
| 15 | WA | Associate of Arts College | Pierce College District II 1/ | Lakewood | 5000 | Not Available | |
| 16 | CA | Associate of Arts College | Reedley College 2/ | Reedley | 1308 | 4167 | 0 |
| 17 | CA | Associate of Arts College | Sierra College | Rocklin | 1290 | 8177 | 0 |
| 18 | CA | Associate of Arts College | West Valley College 1/ | Saratoga | 1338 | Not Available | |

1/ Data not available for FY 1997-98.

2/ Formerly King's River Community College.

Appendix 1 (cont.)

Maui Community College - Peer Group

| | STATE | CARNEGIE CLASSIFICATION | NAME | CITY | FICE CODE | ENROLLMENT | |
|----|-------|-----------------------------------|--|----------------|-------------|---------------|----------|
| | | | | | | FTE Enroll | % Grad |
| 1 | HI | Associate of Arts Colleges | Maui Community College | Kahului | 1615 | 1,637 | 0 |
| 2 | NC | Associate of Arts Colleges | Caldwell Community College & Technical Institute | Hudson | 4835 | 1,777 | 0 |
| 3 | IL | Associate of Arts Colleges | Carl Sandburg College | Galesburg | 7265 | 1,597 | 0 |
| 4 | TX | Associate of Arts Colleges | Cisco Junior College | Cisco | 3553 | 1,661 | 0 |
| 5 | NC | Associate of Arts Colleges | Craven Community College | New Bern | 6799 | 1,348 | 0 |
| 6 | KS | Associate of Arts Colleges | Dodge City Community College | Dodge City | 1913 | 2,042 | 0 |
| 7 | CA | Associate of Arts Colleges | Gavilan College 1/ | Gilroy | 1202 | Not Available | |
| 8 | VA | Associate of Arts Colleges | Germanna Community College | Locust Grove | 8660 | 1,736 | 0 |
| 9 | MA | Associate of Arts Colleges | Greenfield Community College | Greenfield | 2169 | 5,285 | 0 |
| 10 | MO | Associate of Arts Colleges | Mineral Area College | Park Hills | 2486 | 1,660 | 0 |
| 11 | NM | Associate of Arts Colleges | New Mexico Junior College | Hobbs | 2655 | 1,650 | 0 |
| 12 | NY | Associate of Arts Colleges | North Country Community College | Saranac Lake | 7111 | 799 | 0 |
| 13 | WY | Associate of Arts Colleges | Northern Wyoming Community College District 2/ | Sheridan | 3930 | 1,615 | 0 |
| 14 | CA | Associate of Arts Colleges | Porterville College 1/ | Porterville | 1268 | Not Available | |
| 15 | IL | Associate of Arts Colleges | Sauk Valley Community College | Dixon | 1752 | 1,521 | 0 |
| 16 | FL | Associate of Arts Colleges | South Florida Community College | Avon Park | 1522 | 1,423 | 0 |
| 17 | OR | Associate of Arts Colleges | Southwestern Oregon Community College | Coos Bay | 3220 | 1,584 | 0 |
| 18 | TX | Associate of Arts Colleges | Temple College 3/ | Temple | 3627 | 1,703 | 0 |
| 19 | WV | Associate of Arts Colleges | West Virginia Northern Community College | Wheeling | 9054 | 1,579 | 0 |
| 20 | NC | Associate of Arts Colleges | Western Piedmont Community College | Morganton | 2982 | 1,324 | 0 |

1/ Data not available for FY 1997-98.

2/ Formerly Sheridan College.

3/ Formerly Temple Junior College.

Windward Community College - Peer Group

| | STATE | CARNEGIE CLASSIFICATION | NAME | CITY | FICE CODE | ENROLLMENT | |
|----|-------|-----------------------------------|---|----------------|--------------|---------------|----------|
| | | | | | | FTE Enroll | % Grad |
| 1 | HI | Associate of Arts Colleges | Windward Community College | Kaneohe | 11220 | 913 | 0 |
| 2 | CT | Associate of Arts Colleges | Asnuntuck Community-Technical College 1/ | Enfield | 11150 | Not Available | |
| 3 | GA | Associate of Arts Colleges | Atlanta Metropolitan College | Atlanta | 12165 | 1,391 | 0 |
| 4 | WA | Associate of Arts Colleges | Big Bend Community College | Moses Lake | 3770 | 1,291 | 0 |
| 5 | MD | Associate of Arts Colleges | Carroll Community College | Westminster | 31007 | 1,318 | 0 |
| 6 | CA | Associate of Arts Colleges | College of the Siskiyous | Weed | 1187 | 1,247 | 0 |
| 7 | KS | Associate of Arts Colleges | Independence Community College | Independence | 1924 | 836 | 0 |
| 8 | OH | Associate of Arts Colleges | Kent State University Stark Campus | Canton | 3054 | 1,734 | 0 |
| 9 | MN | ----- | Mesabi Range Community & Technical College 1/ | Eveleth | 5739 | Not Available | |
| 10 | VA | Associate of Arts Colleges | Richard Bland College | Petersburg | 3707 | 907 | 0 |
| 11 | AZ | Associate of Arts Colleges | South Mountain Community College | Phoenix | 21466 | 1,388 | 0 |
| 12 | FL | Associate of Arts Colleges | St. Johns River Community College | Palatka | 1523 | 2,366 | 0 |
| 13 | CA | Associate of Arts Colleges | Taft College | Taft | 1309 | 603 | 0 |
| 14 | OH | Associate of Arts Colleges | University of Akron - Wayne College | Orrville | 10818 | 782 | 0 |
| 15 | SC | Associate of Arts Colleges | University of South Carolina - Sumter | Sumter | 3426 | 835 | 0 |
| 16 | OK | Associate of Arts Colleges | Western Oklahoma State College | Altus | 3146 | 997 | 0 |
| 17 | WA | Associate of Arts Colleges | Whatcom Community College | Bellingham | 10364 | 2,377 | 0 |

1/ Data not available for FY1997-98.

Appendix 2
UNIVERSITY OF HAWAI'I AT MANOA
HIGHER EDUCATION PRICE INDEX (HEPI) 1
FISCAL YEAR 1992-93 TO 1997-98

| FISCAL YEAR | HEPI | YEARLY % CHANGE |
|-------------|-------|--------------------|
| 1992-93 | 100.0 | - |
| 1993-94 | 103.4 | 3.4 |
| 1994-95 | 106.5 | 3.0 |
| 1995-96 | 109.7 | 3.0 |
| 1996-97 | 113.0 | 3.0 |
| 1997-98 | 117.0 | 3.5 |

1/ Index values were converted to FY 1992-93 equal to 100.

SOURCE: Inflation Measures for Schools, Colleges and Libraries,
Research Associates of Washington.

APPENDIX 3 TERMS AND DEFINITIONS

Benchmark, Peer Groups: The terms “benchmark” and “peer” are used to differentiate between the comparative groups developed internally at the University of Hawai‘i and by the National Center for Higher Education Management Systems (NCHEMS).

In particular, the **benchmark** group reflects input from the campus executives. Benchmark comparison data are included in this report for UH Mānoa, UH Hilo and the UH Community College system. A benchmark group for UH-West O‘ahu has not been developed.

The institutions included in the **peer** groups were developed by Dennis Jones at NCHEMS. NCEHMS Information Services provide a Comparison Group Selection Service, and we contracted with them to develop comparative groups for each UH campus. NCHEMS uses an indicator database containing variables covering institutional characteristics, faculty, finance, degrees awarded, enrollments, and other data. Professional judgment was also involved in this selection process. (Source: UH Office of Planning & Police, August 1994.)

Peer comparison data are included in this report for UH Mānoa, UH Hilo, UH-West O‘ahu and the UH Community College campuses. Neither benchmark or peer groups have been developed for the UH system.

Effective April 1998, peer groups for the individual campuses were updated by NCHEMS, therefore, beginning fiscal year 1995-96, data for each campus were compared against its new peer group.

Systemwide Revenues & Expenditures: Systemwide revenues and expenditures refer to revenues and expenditures of University of Hawai‘i system offices. Systemwide revenues were apportioned by Level IV program according to each campus’ share of the total revenues for each program. Systemwide expenditures were apportioned by Level IV program according to each campus’ share of the total expenditures for each program.

Total Revenues: Total revenues are calculated by summing revenues for three items: *tuition and fees, state appropriations, and private gifts, contracts and endowment income*. Although tuition revenues from FY 1992-93 to FY 1994-95 were returned to the State of Hawai‘i general fund for all the University of Hawai‘i campuses, they are included in this report under tuition and fee revenues for comparative purposes

Total Expenditures: Total expenditures are calculated by summing expenditures for *instruction, student services, academic support, institutional support, operations and maintenance, funded research, public services and student aid*.

Higher Education Price Index (HEPI): The HEPI measures the average relative level in the prices of a fixed market basket of goods and services purchased by colleges and universities through current fund educational and general expenditures excluding expenditures for research.

(Source: Inflation Measures for Schools, Colleges and Libraries, Research Associates of Washington, 1995 Update, page 21.)

The following definitions were provided by Research Associates of Washington and has been updated

for FY 1997-98:

FTE Fall Enrollment: Full-time-equivalent (FTE) enrollment is the sum of the fall count of full-time students (those whose academic load of course work or other required activity is at least 75 percent of the institution's normal full-time load) plus one-third of the fall part-time student count.

Percent Graduate Students: Ratio of graduate enrollment to total headcount enrollment.

Tuition and Fees: All tuition and fees (including student activity fees) assessed against students for education purposes. This category reports *gross* tuition revenues including any portion paid through receipt of student aid from all sources including institutionally administered financial aid.

State and Local Government Appropriations: Includes all state and local government monies received for current operating expenses including student financial aid except grants and contracts and appropriations for hospitals. Tuition and fees revenues remitted to the state and then returned to the institution are excluded.

Private Gifts, Contracts and Endowment Income: Revenues for current operations including student financial aid from private donors, revenues from private contracts for which specific goods and services are provided, and income from endowments. Excluded are gifts, grants, contracts, and endowment income for hospitals.

Instruction: Instruction includes all expenditures for the teaching function including departmental administration, and research and public service that are not separately budgeted.

Student Services: Student services includes funds for recruitment, admissions, registrar activities, and activities whose primary purpose is to contribute to the well-being of students and to their development outside the context of the formal instructional program.

Academic Support: Academic support includes all expenditures for support services integral to the mission of instruction, research, and public service. It includes expenditures for libraries. Expenditures for academic administration where the primary function is administration (e.g., academic deans) are included here.

Libraries: Libraries, a subset of Academic Support, includes expenditures for organized activities that directly support the operation of a cataloged or otherwise classified collection of published material. The Libraries entry includes expenses for the purchase of books and all forms of collected communications.

Institutional Support: Institutional support includes expenditures for the day-to-day operational support of the entire institution, excluding expenditures for physical plant operations. Includes general administrative services, executive direction and planning, legal, data processing, space management, employee personnel, public relations, campus security, etc.

Operation and Maintenance of Plant: All expenditures to provide services and maintenance related to grounds and facilities.

Funded Research: Separately budgeted funds expended for research specifically organized for the

commissioned purpose. Excluded are discretionary expenditures for departmental research.

Public Service: Funds expended for activities that are primarily to provide non-instructional services that are beneficial to individuals and groups external to the institution.

Student Financial Aid (Scholarships and Fellowships): Scholarships, fellowships, outright grants, trainee stipends, prizes, and awards to individuals enrolled in formal course work, either for credit or non-credit. Aid to students in the form of tuition or fees remissions should be included. Pell grants are reported as federal allotment and not in this category.

Estimated Full Instructional Expenditures: Full instruction expenditures (unadjusted) equal expenditures for instruction and student services plus a prorated share of associated support expenditures.

Support expenditures consists of expenditures for academic support, institutional support and plant operation and maintenance. *Primary expenditures* consist of expenditures for instruction, student services, organized research and public service.

Support expenditures are allocated to primary expenditures by the ratio of the two amounts (academic support + institutional support + plant) / (instruction + student services + research + public service). Thus, full instruction expenditures (unadjusted) equal (instruction + student services) x (1.0 + allocation %).

Higher Education Wage Index (HEWI): This index reports geographic wage differentials generally practiced in the labor market for college and university faculty and staff. The index is used to adjust institutional expenditures to equivalent purchasing (hiring) power.

Medical Adjustment Factor: This adjustment is used to delete the exceptionally high costs of medical programs from full instruction expenditures. *Note this figure is not shown in the tables.*

Adjusted Full Instructional Expenditures: To establish comparability, the *estimated full instructional expenditure* is multiplied by the medical adjustment factor and divided by the Higher Education Wage Index (HEWI).

Norm of Full Instructional Expenditures (HEWI adjusted): The normative value of full instructional expenditures per student at a given enrollment level as indicated by a constructed central tendency line on a scatter diagram for institutions in a given benchmark or peer group.

Deviation from Norm: This deviation reports the percentage by which the real purchasing power of an institution's full instruction expenditures per FTE student exceeds or is less than the norm for the subject institution's comparative group and enrollment level.