

SCHOLASTIC ASSESSMENT TEST (SAT-I) SCORES
UNIVERSITY OF HAWAI'I AT HILO
FALL 2007

Institutional Research Office

University of Hawai'i

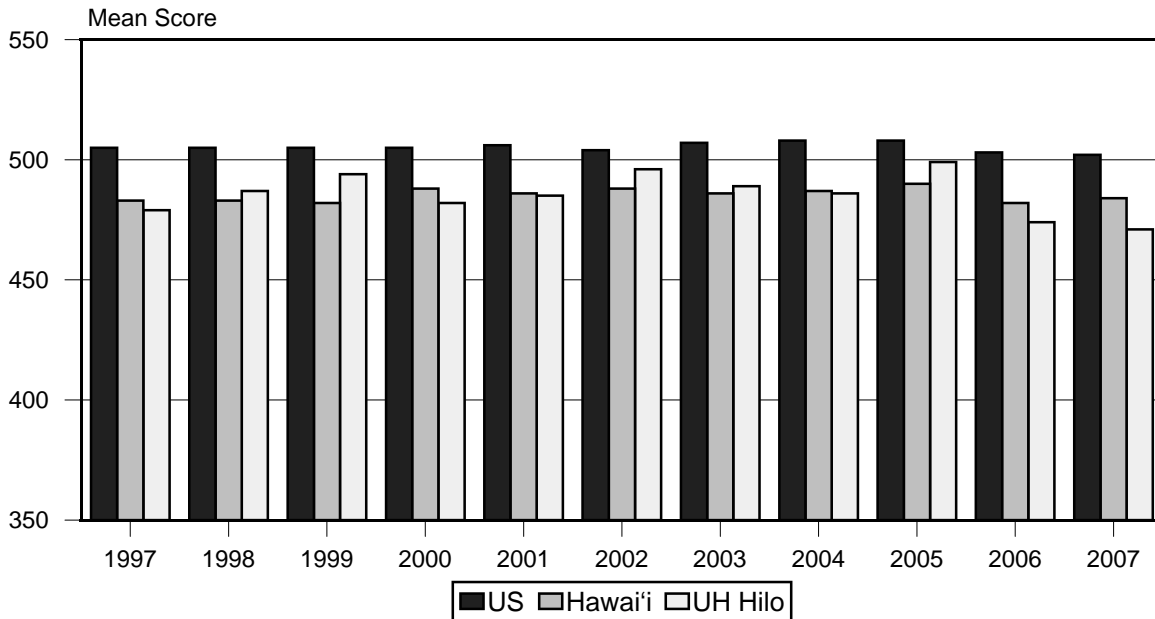
March 2008

File Reference: Management and Planning Support Folder, Students

Reports available online at: <http://www.hawaii.edu/iro/maps.htm>

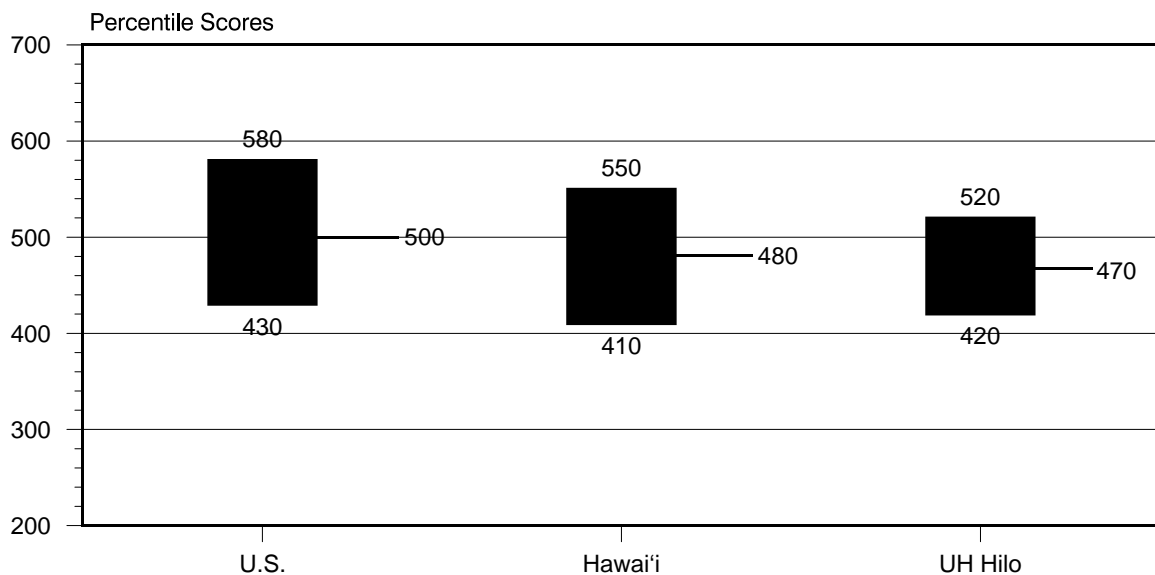
University of Hawai'i at Hilo

Figure 1
Mean SAT-I Verbal / Reading Score



UH Hilo - First-time freshmen enrolled in the fall semester.
Hawai'i and U.S. - All test takers.
Note: All scores are recentered.

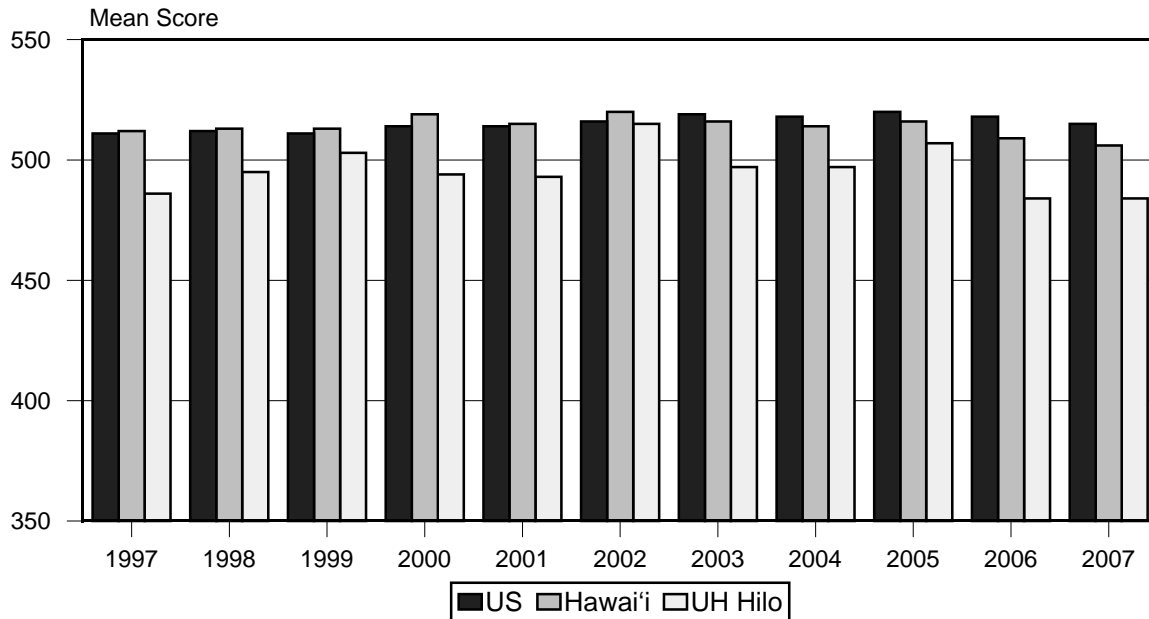
Figure 2
SAT-I Verbal / Reading Mid-50th Percentile Ranges



Note: Horizontal lines demarcate the 50th percentile scores.
All scores are recentered.

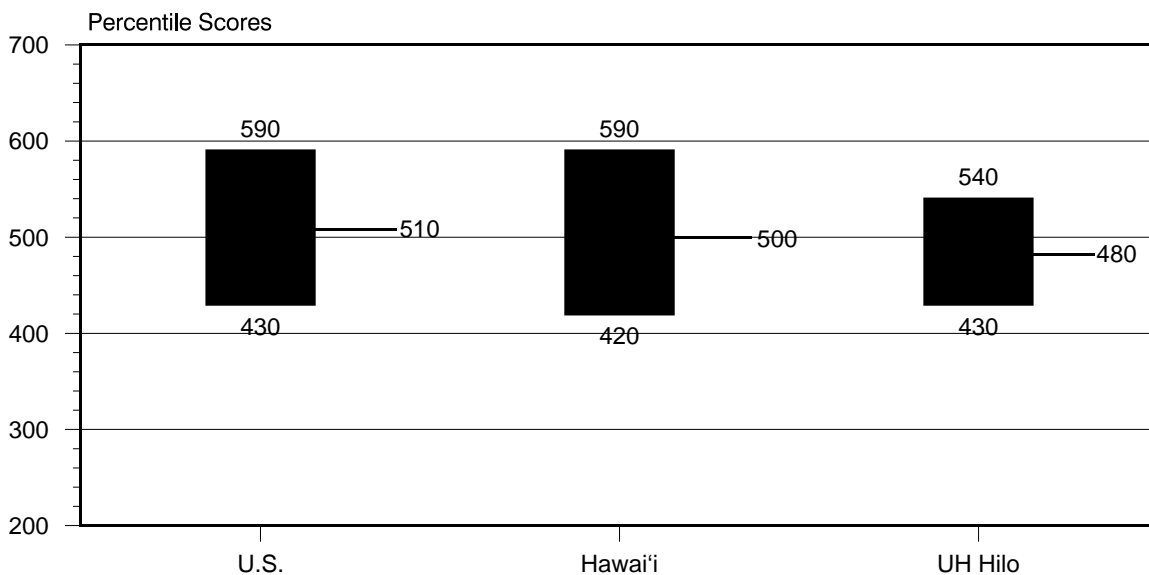
University of Hawai'i at Hilo

Figure 3
Mean SAT-I Math Score



UH Hilo - First-time freshmen enrolled in the fall semester.
 Hawai'i and U.S. - All test takers.
 Note: All scores are recentered.

Figure 4
SAT-I Math Mid-50th Percentile Ranges



Note: Horizontal lines demarcate the 50th percentile scores.
 All scores are recentered.

University of Hawai'i at Hilo

Figure 5
SAT-I Score Percent Distribution

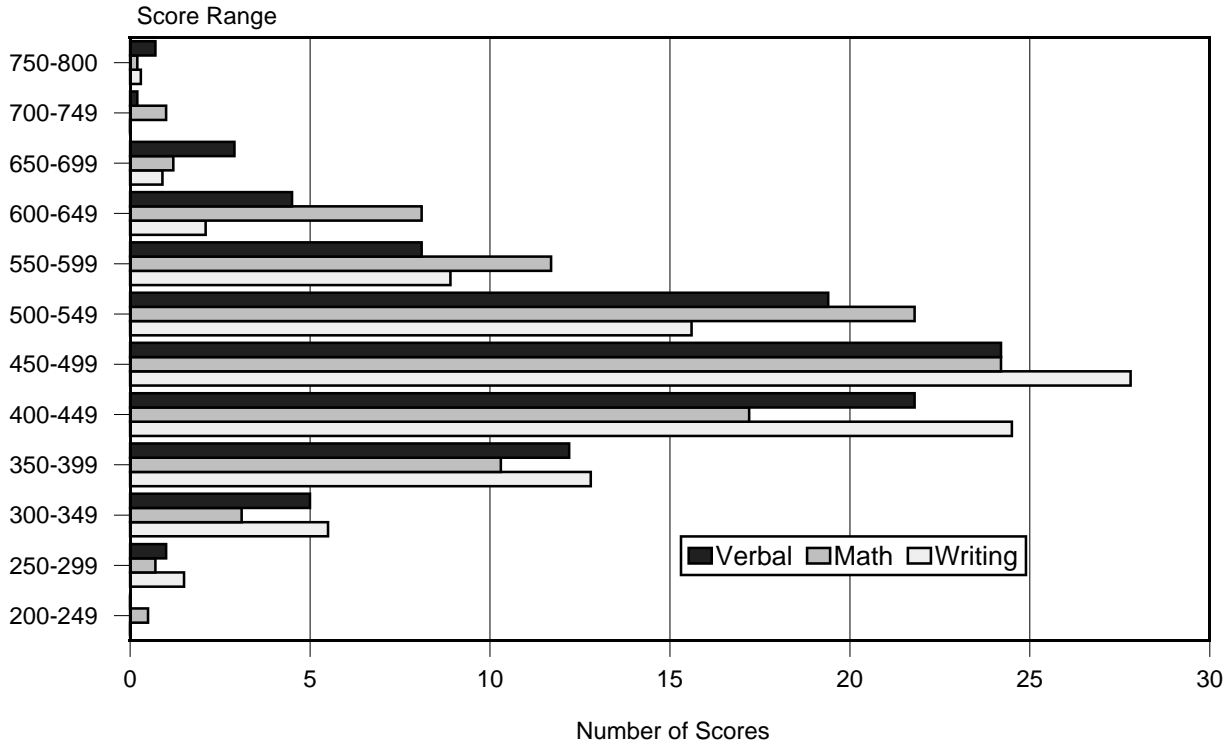
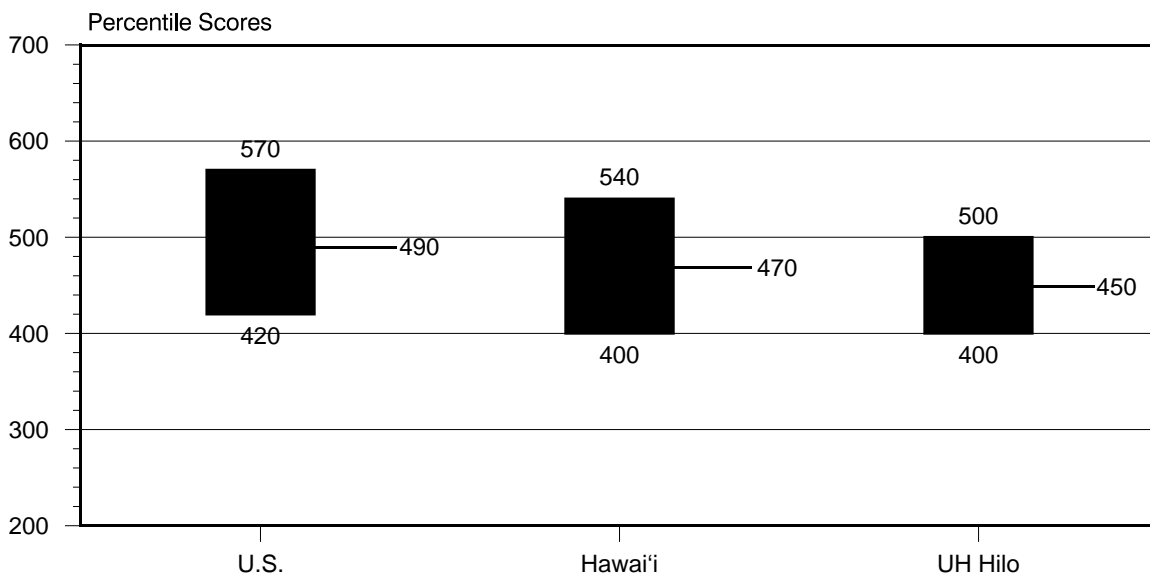


Figure 6
SAT-I Writing Mid-50th Percentile Ranges



Note: Horizontal lines demarcate the 50th percentile scores.
All scores are recentered.

TABLE 1
 AVERAGE SCHOLASTIC ASSESSMENT TEST I (SAT-I) SCORES
 (RECENTERED SCALE)
 UNIVERSITY OF HAWAI'I AT HILO
 FALL 1997 TO FALL 2007

Fall Semester	VERBAL / READING 1/			MATH			WRITING 2/		
	UHH 3/	Hawai'i 4/	U.S. 5/	UHH 3/	Hawai'i 4/	U.S. 5/	UHH 3/	Hawai'i 4/	U.S. 5/
1997.....	479	483	505	486	512	511			
1998.....	487	483	505	495	513	512			
1999.....	494	482	505	503	513	511			
2000.....	482	488	505	494	519	514			
2001.....	485	486	506	493	515	514			
2002.....	496	488	504	515	520	516			
2003.....	489	486	507	497	516	519			
2004.....	486	487	508	497	514	518			
2005.....	499	490	508	507	516	520			
2006.....	474	482	503	484	509	518			
2007.....	471	484	502	484	506	515	455	473	494

Note: All scores are recentered scores.

1/ Effective March 2005, the SAT Verbal test was renamed SAT Critical Reading. UH Hilo applicants with multiple scores (i.e., scores for SAT Verbal and SAT Critical Reading) have the highest score of either test reported.

2/ Writing test added in Fall 2007. Note: Writing test currently not considered in the admissions process.

3/ UHH: First-time freshmen entering the fall semester at the University of Hawai'i at Hilo.

4/ Hawai'i: Hawai'i test takers.

5/ U.S.: US test takers

Sources: State of Hawai'i and US national data from Profile of College Bound Seniors National Report, and Profile of College Bound Seniors Hawai'i Report from College Board online website. UH Hilo data from Student Information Management System (SIMS) application files. Fall 2003 and Fall 2004 data for UH Hilo are from Banner. Effective Fall 2005, data are from Banner Operational Data Store (ODS) IRO_ADMISSIONS.

TABLE 2
 SCHOLASTIC ASSESSMENT TEST I (SAT-I) SCORES
 CRITICAL READING PROFILES (RECENTERED SCALE)
 UNIVERSITY OF HAWAI'I AT HILO
 FALL 2007

SAT Score Range	CRITICAL READING					
	UH Hilo 1/ No. V%		Hawai'i 2/ No. V%		U.S. 3/ No. V%	
750-800	3	0.7	109	1.4	28,366	1.9
700-749	1	0.2	182	2.3	46,128	3.1
650-699	12	2.9	345	4.3	87,389	5.8
600-649	19	4.5	643	8.1	154,527	10.3
550-599	34	8.1	912	11.4	196,175	13.1
500-549	81	19.4	1,277	16.0	250,422	16.8
450-499	101	24.2	1,442	18.1	258,041	17.3
400-449	91	21.8	1,427	17.9	226,543	15.2
350-399	51	12.2	924	11.6	134,246	9.0
300-349	21	5.0	474	5.9	69,120	4.6
250-299	4	1.0	156	2.0	27,768	1.9
200-249			91	1.1	15,806	1.1
Number	418		7,982		1,494,531	
Mean Score	471		484		502	
25th Percentile	420		410		430	
50th Percentile	470		480		500	
75th Percentile	520		550		580	
Mid-50th Percentile Range 4/	420-520		410-550		430-580	

1/ UHH: First-time freshmen entering the fall semester at the University of Hawai'i at Hilo.

2/ Hawai'i: Hawai'i test takers.

3/ US: US test takers

4/ Range of scores from the 25th to 75th percentile, respectively.

Sources: Hawai'i and US data from Profile of College Bound Seniors National Report, and Profile of College Bound Seniors Hawai'i Report from College Board online website. UH Hilo data from Banner Operational Data Store (ODS) IRO_ADMISSIONS.

TABLE 3
 SCHOLASTIC ASSESSMENT TEST I (SAT-I) SCORES
 MATH PROFILES (RECENTERED SCALE)
 UNIVERSITY OF HAWAI'I AT HILO
 FALL 2007

SAT Score Range	MATH					
	UH Hilo 1/ No. V%		Hawai'i 2/ No. V%		U.S. 3/ No. V%	
750-800	1	0.2	157	2.0	35,136	2.4
700-749	4	1.0	285	3.6	54,108	3.6
650-699	5	1.2	581	7.3	120,933	8.1
600-649	34	8.1	746	9.3	156,057	10.4
550-599	49	11.7	1,086	13.6	213,880	14.3
500-549	91	21.8	1,333	16.7	247,435	16.6
450-499	101	24.2	1,336	16.7	243,569	16.3
400-449	72	17.2	1,131	14.2	202,883	13.6
350-399	43	10.3	744	9.3	124,616	8.3
300-349	13	3.1	368	4.6	59,672	4.0
250-299	3	0.7	139	1.7	23,083	1.5
200-249	2	0.5	76	1.0	13,159	0.9
Number	418		7,982		1,494,531	
Mean Score	484		506		515	
25th Percentile	430		420		430	
50th Percentile	480		500		510	
75th Percentile	540		590		590	
Mid-50th Percentile Range 4/	430-540		420-590		430-590	

1/ UHH: First-time freshmen entering the fall semester at the University of Hawai'i at Hilo.

2/ Hawai'i: Hawai'i test takers.

3/ US: US test takers

4/ Range of scores from the 25th to 75th percentile, respectively.

Sources: Hawai'i and US data from Profile of College Bound Seniors National Report, and Profile of College Bound Seniors Hawai'i Report from College Board online website. UH Hilo data from Banner Operational Data Store (ODS) IRO_ADMISSIONS.

TABLE 4
SCHOLASTIC ASSESSMENT TEST I (SAT-I) SCORES
WRITING PROFILES (RECENTERED SCALE)
UNIVERSITY OF HAWAI'I AT HILO
FALL 2007

SAT Score Range	WRITING 1/					
	UH Hilo 2/ No. V%		Hawai'i 3/ No. V%		U.S. 4/ No. V%	
750-800	1	0.3	43	0.5	19,814	1.3
700-749			139	1.7	39,725	2.7
650-699	3	0.9	280	3.5	82,606	5.5
600-649	7	2.1	524	6.6	133,208	8.9
550-599	29	8.9	918	11.5	192,780	12.9
500-549	51	15.6	1,223	15.3	245,779	16.5
450-499	91	27.8	1,546	19.4	266,876	17.9
400-449	80	24.5	1,453	18.2	236,343	15.8
350-399	42	12.8	1,114	14.0	160,263	10.7
300-349	18	5.5	476	6.0	74,325	5.0
250-299	5	1.5	181	2.3	26,090	1.7
200-249			76	1.0	13,940	0.9
Number	327		7,973		1,491,749	
Mean Score	455		473		494	
25th Percentile	400		400		420	
50th Percentile	450		470		490	
75th Percentile	500		540		570	
Mid-50th Percentile Range 5/	400-500		400-540		420-570	

1/ Writing test added in Fall 2007. Currently not considered in the admissions process.

2/ UHH: First-time freshmen entering the fall semester at the University of Hawai'i at Hilo.

3/ Hawai'i: Hawai'i test takers.

4/ US: US test takers

5/ Range of scores from the 25th to 75th percentile, respectively.

Sources: Hawai'i and US data from Profile of College Bound Seniors National Report, and Profile of College Bound Seniors Hawai'i Report from College Board online website. UH Hilo data from Banner Operational Data Store (ODS) IRO_ADMISSIONS.

TABLE 5
 SCHOLASTIC ASSESSMENT TEST I (SAT-I) SCORES OF FIRST-TIME FRESHMEN
 (RECENTERED SCALE)
 UNIVERSITY OF HAWAI'I AT HILO
 FALL 2007

	APPLIED			ACCEPTED			ENROLLED		
	Men	Women	Total	Men	Women	Total	Men	Women	Total
CRITICAL READING:									
25th Percentile Score ...	410	420	410	420	420	420	410	420	420
50th Percentile Score ...	470	470	470	480	470	470	470	470	470
75th Percentile Score ...	530	520	530	530	520	530	530	520	520
Mean Score	475	473	473	484	476	479	475	470	471
Mid-50th Percentile Range 1/	410-530	420-520	410-530	420-530	420-520	420-530	410-530	420-520	420-520
MATH:									
25th Percentile Score ...	450	410	430	460	420	430	450	410	430
50th Percentile Score ...	510	470	480	520	470	490	500	470	480
75th Percentile Score ...	570	530	550	580	530	560	570	530	540
Mean Score	509	471	487	520	477	495	506	469	484
Mid-50th Percentile Range 1/	450-570	410-530	430-550	460-580	420-530	430-560	450-570	410-530	430-540
WRITING:									
25th Percentile Score ...	400	410	410	410	420	410	410	400	400
50th Percentile Score ...	450	470	460	460	470	460	450	450	450
75th Percentile Score ...	510	510	510	520	510	520	500	510	500
Mean Score	458	467	463	467	470	468	453	456	455
Mid-50th Percentile Range 1/	400-510	410-510	410-510	410-520	420-510	410-520	410-500	400-510	400-500

Notes: Percentile describes the score below which a given percentage of the total number of scores occurred. For example, in Fall 2007, on the math test, 50% of the total students who applied to the University of Hawai'i at Hilo scored 480 or below, 50% of the students accepted scored 490 or below, and 50% of the students enrolled scored 480 or below. UH Hilo data may not tie to other previously published reports due to the use of different data files.

1/ Range of scores from the 25th to 75th percentile, respectively.

Source: Banner Operational Data Store (ODS) IRO_ADMISSIONS

TABLE 6
 SCHOLASTIC ASSESSMENT TEST I (SAT-I) SCORES
 STATE AVERAGES (RECENTERED SCALE) 1/
 UNIVERSITY OF HAWAI'I AT HILO
 FALL 2007

CRITICAL READING			MATH			WRITING		
<u>Rank</u>		<u>Score</u>	<u>Rank</u>		<u>Score</u>	<u>Rank</u>		<u>Score</u>
1	Iowa	608	1	Iowa	613	1	Illinois	588
2	Minnesota	596	2	Illinois	611	2	Missouri	587
3	Illinois	594	3	Minnesota	603	3	Iowa	586
4	Missouri	594	4	South Dakota	602	4	Minnesota	577
5	South Dakota	589	5	Wisconsin	598	5	Wisconsin	575
6	Wisconsin	587	6	North Dakota	596	6	Kansas	569
7	North Dakota	584	7	Missouri	594	7	Tennessee	568
8	Kansas	583	8	Kansas	590	8	South Dakota	567
9	Nebraska	579	9	Nebraska	585	9	Arkansas	565
10	Arkansas	578	10	Michigan	579	10	Louisiana	563
11	Oklahoma	578	11	Oklahoma	571	11	Nebraska	562
12	Tennessee	574	12	Wyoming	571	12	North Dakota	562
13	Louisiana	569	13	Tennessee	569	13	Mississippi	560
14	Michigan	568	14	Louisiana	567	14	Oklahoma	559
15	Mississippi	568	15	Arkansas	566	15	Alabama	554
16	Kentucky	567	16	Colorado	565	16	Kentucky	553
17	Wyoming	565	17	Kentucky	565	17	Michigan	553
18	Alabama	563	18	Alabama	556	18	Colorado	549
19	Colorado	560	19	Utah	556	19	Utah	544
20	Utah	558	20	Mississippi	549	20	Wyoming	544
21	New Mexico	555	21	New Mexico	546	21	New Mexico	540
22	Idaho	541	22	Montana	543	22	Montana	522
23	Montana	538	23	Ohio	542	23	Ohio	522
24	Ohio	536	24	Idaho	539	24	Idaho	519
25	Washington	526	25	Washington	531	25	New Hampshire	512
26	Oregon	522	26	Oregon	526	26	Connecticut	511
27	New Hampshire	521	27	Arizona	525	27	Massachusetts	511
28	Alaska	519	28	Massachusetts	522	28	Washington	510
29	Arizona	519	29	New Hampshire	521	29	Vermont	508
30	Vermont	516	30	Vermont	518	30	West Virginia	505
31	West Virginia	516	31	Alaska	517	31	Arizona	502
32	Massachusetts	513	32	California	516	32	Oregon	502
33	Virginia	511	32*	National 3/	515	33	California	498
34	Connecticut	510	33	Connecticut	512	34	Virginia	498
35*	National 3/	502	34	Virginia	511	35	Maryland	496
35	Maryland	500	35	New Jersey	510	36*	National 3/	494
36	Nevada	500	36	North Carolina	509	36	New Jersey	494
37	California	499	37	Indiana	507	37	Rhode Island	492
38	Delaware	497	38	Texas	507	38	Alaska	491
39	Florida	497	39	West Virginia	507	39	Delaware	486
40	Indiana	497	40	Hawai'i	506	40	Georgia	483
41	Rhode Island	496	41	Nevada	506	41	Indiana	483
42	New Jersey	495	42	New York	505	42	New York	482
43	North Carolina	495	43	Maryland	502	43	North Carolina	482
44	Georgia	494	44	Pennsylvania	499	44	Pennsylvania	482
45	Pennsylvania	493	45	Rhode Island	498	45	Texas	482
46	Texas	492	46	Delaware	496	46	Nevada	480
47	New York	491	47	Florida	496	47	Florida	479
48	South Carolina	488	48	South Carolina	496	48	South Carolina	475
49	Hawai'i	484	49	Georgia	495	49	Hawai'i	473
50	District of Columbia	478	49*	UH Hilo 2/	484	50	District of Columbia	471
51*	UH Hilo 2/	471	50	Maine	465	51	Maine	457
51	Maine	466	51	District of Columbia	462	51*	UH Hilo 2/	455

* Rank to which score is closest.

1/ Includes scores for the 50 states and the District of Columbia. Averages reflect all 2007 test takers from the specified state.

2/ UH Hilo scores reflect First-time freshmen entering in Fall 2007 at the University of Hawai'i at Hilo.

3/ National averages reflect all 2007 test takers in the U.S. and the District of Columbia.

Sources: Profile of College Bound Seniors national and state reports from College Board Online web site; UH Hilo data from Banner Operational Data Store (ODS) IRO_ADMISSIONS.

TABLE 7
 SAT SCORES BY ETHNICITY GROUP
 UNIVERSITY OF HAWAI'I AT HILO
 FALL 2007

	Total Number 1/			Mean SAT Reading			Mean SAT Math			Mean SAT Writing 2/		
	Applied	Accepted	Enrolled	Applied	Accepted	Enrolled	Applied	Accepted	Enrolled	Applied	Accepted	Enrolled
Total Number 1/ .	1,021	799	418	473	479	471	487	495	484	463	468	455
Asian 3/	132	104	66	459	462	451	509	517	499	447	449	435
Other Asian 4/ ...	62	55	25	479	489	474	517	527	530	464	475	462
Filipino	82	70	38	446	449	443	459	467	476	451	455	454
Hawaiian	239	187	107	446	455	453	463	473	465	441	447	441
Pac Islander 5/ ..	44	31	13	407	414	404	435	451	460	426	435	417
American Indian ..	8	3	2	486	557	565	461	513	490	455	470	480
Black	21	12	5	480	468	482	450	439	510	457	449	453
Hispanic 6/	42	29	13	458	469	465	470	477	460	441	459	432
White 7/	274	211	94	514	513	511	511	514	490	503	503	490
Mixed	106	87	50	491	501	492	489	498	494	465	476	461
No Data	11	10	5	541	545	540	506	507	446	497	507	474

1/ Only first-time freshmen having both Critical Reading and Math SAT test scores are included in population.

2/ Total record counts for Writing scores for Fall 2007 were 819 Applied, 636 Accepted and 327 Enrolled, somewhat fewer than for Reading and Math.

3/ Includes Japanese, Chinese and Korean only.

4/ Includes Indian Subcontinent, Laotian, Thai, Vietnamese, Other Asian and Mixed Asian.

5/ Includes Guamanian, Micronesian, Samoan, Tongan, Mixed Pacific Islander and Other Pacific Islander.

6/ Includes Puerto Rican, Mixed Hispanic and Other Hispanic.

7/ Includes Caucasian, Portuguese and Middle Easterner.

Source: Banner Operational Data Store (ODS) IRO_ADMISSIONS

TABLE 8
SAT SCORES BY GEOGRAPHIC LOCATION OF HIGH SCHOOL
UNIVERSITY OF HAWAI'I AT HILO
FALL 2007

	Total Number 1/			Mean SAT Reading			Mean SAT Math			Mean SAT Writing 2/		
	Applied	Accepted	Enrolled	Applied	Accepted	Enrolled	Applied	Accepted	Enrolled	Applied	Accepted	Enrolled
Total Number	1,021	799	418	473	479	471	487	495	484	463	468	455
Hawai'i	655	535	324	459	446	464	477	485	480	447	453	448
Public High School ..	434	365	227	447	456	454	470	482	476	434	444	437
Private High School .	211	161	88	481	484	483	491	494	494	473	474	474
Other Hawai'i 3/	10	9	9	509	518	518	440	449	449	479	479	479
U.S. Mainland	321	231	82	507	513	505	510	518	497	498	505	487
U.S. Related Areas 4/	20	16	5	419	433	462	436	454	446	444	452	463
Foreign Countries	20	13	6	453	482	438	497	542	548	462	483	430
No Data	5	4	1	486	453	330	520	505	620	476	433	280

1/ Only first-time freshmen having both Critical Reading and Math SAT test scores are included in population.

2/ Total record counts for Writing scores for Fall 2007 were 819 Applied, 636 Accepted and 327 Enrolled, somewhat fewer than for Reading and Math.

3/ Includes GED and other Hawai'i (high school not specified).

4/ Includes U.S. Possessions, Commonwealths and republics within the Compact of Free Association.

Source: Banner Operational Data Store (ODS) IRO_ADMISSIONS

APPENDIX A
 RECIPIENTS OF SAT PROGRAM SCORE REPORTS - HAWAI'I 1/
 UNIVERSITY OF HAWAI'I AT HILO
 FALL 2007

Institution / Program 2/	State	Type	No. of Students	% of Score Senders 3/
University of Hawai'i at Mānoa	HI	Public	3,803	63.9
Hawai'i Pacific University	HI	Private	1,211	20.4
University of Hawai'i at Hilo	HI	Public	872	14.7
University of Washington	WA	Public	839	14.1
Oregon State University	OR	Public	720	12.1
University of Southern California	CA	Private	700	11.8
University of Nevada - Las Vegas	NV	Public	622	10.5
Chaminade University of Honolulu	HI	Private	610	10.3
University of Portland	OR	Private	514	8.6
University of California - Los Angeles	CA	Public	501	8.4
University of Oregon	OR	Public	475	8.0
University of San Francisco	CA	Private	432	7.3
Stanford University	CA	Private	421	7.1
Loyola Marymount University	CA	Private	410	6.9
Seattle University	WA	Private	406	6.8
NCAA Initial Eligibility Clearinghouse	IA	N/A	390	6.6
Washington State University	WA	Public	387	6.5
Santa Clara University	CA	Private	384	6.5
University of the Pacific	CA	Private	378	6.4
Pacific University	OR	Private	357	6.0
University of San Diego	CA	Private	355	6.0
University of California - Berkeley	CA	Public	343	5.8
University of California - San Diego	CA	Public	277	4.7
San Diego State University	CA	Public	275	4.6
University of California - Irvine	CA	Public	251	4.2
Chapman University	CA	Private	250	4.2
Boston University	MA	Private	239	4.0
Portland State University	OR	Public	236	4.0
Leeward Community College	HI	Public	223	3.7
University of Colorado - Boulder	CO	Public	223	3.7
New York University	NY	Private	211	3.5

APPENDIX A (CONT.)

Institution / Program 2/	State	Type	No. of Students	% of Score Senders 3/
Creighton University	NE	Private	205	3.4
Pepperdine University	CA	Private	203	3.4
University of Puget Sound	WA	Private	199	3.3
Honolulu Community College	HI	Public	190	3.2
Arizona State University - Tempe	AZ	Public	186	3.1
Gonzaga University	WA	Private	175	2.9
Northern Arizona University	AZ	Public	171	2.9
Harvard Undergraduate Admissions	MA	Private	167	2.8
University of California - Santa Barbara	CA	Public	165	2.8
Brigham Young University - Hawai'i	HI	Private	163	2.7
Colorado State University - Ft. Collins	CO	Public	161	2.7
University of California - Davis	CA	Public	146	2.5
Willamette University	OR	Private	144	2.4
Southern Oregon University	OR	Public	136	2.3

1/ Data shown here report the colleges, universities and scholarship programs that received the most SAT Program Score Reports from 2007 Hawai'i test takers. Data shown do not indicate whether a test taker applied to a particular institution, but rather that the test taker expressed an interest in an institution and/or program.

2/ The total number of college, universities, or scholarship programs that received reports from 2007 Hawai'i test takers was 1,324. There were an additional 1,279 institutions not listed above.

3/ Percent of scores received that were from Hawai'i test takers.

Source: Profile of College Bound Seniors Hawai'i Report from College Board Online web site.