

SCHOLASTIC ASSESSMENT TEST I (SAT-I) SCORES

UNIVERSITY OF HAWAI'I AT MANOA

FALL 2000

Institutional Research Office

University of Hawai'i

December 2000

File Reference: Management and Planning Support Folder, Students

Reports available online at: <http://www.hawaii.edu/iro/maps.htm>

Figure 1
Average SAT-I Verbal

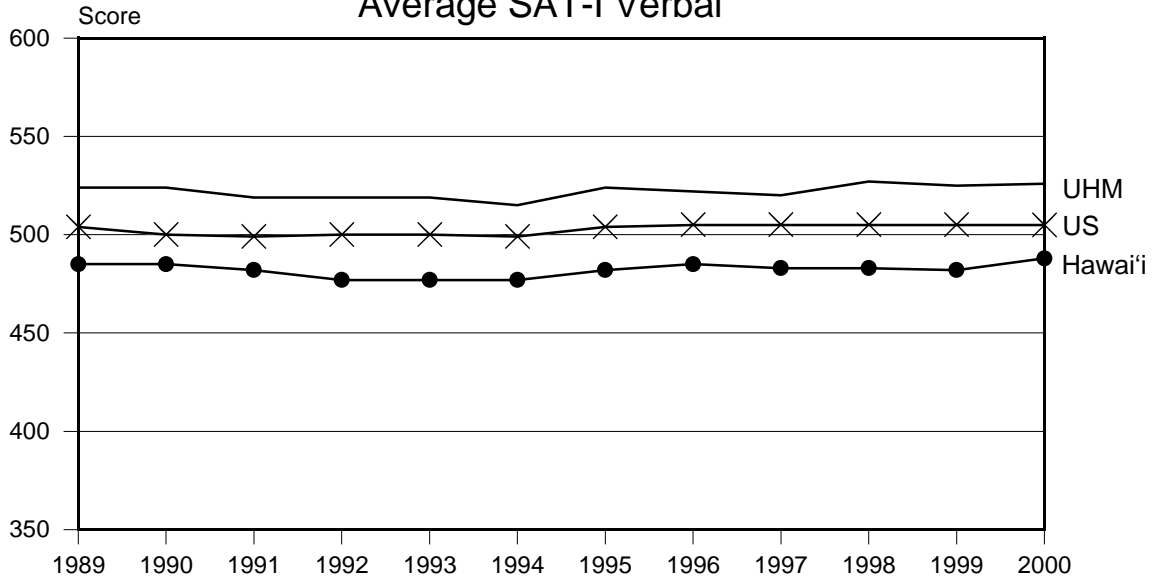
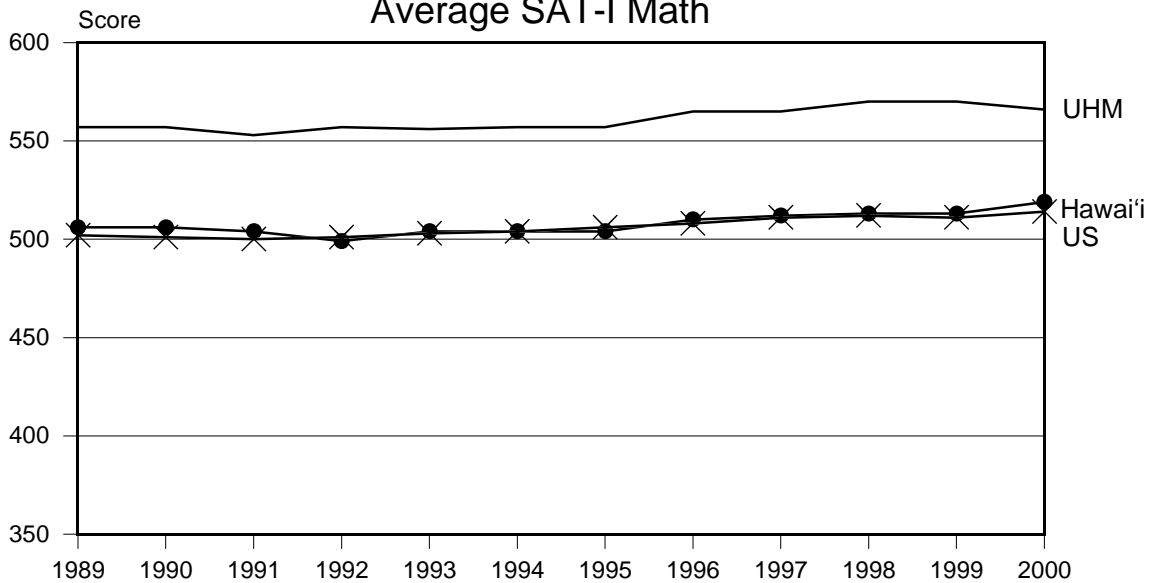


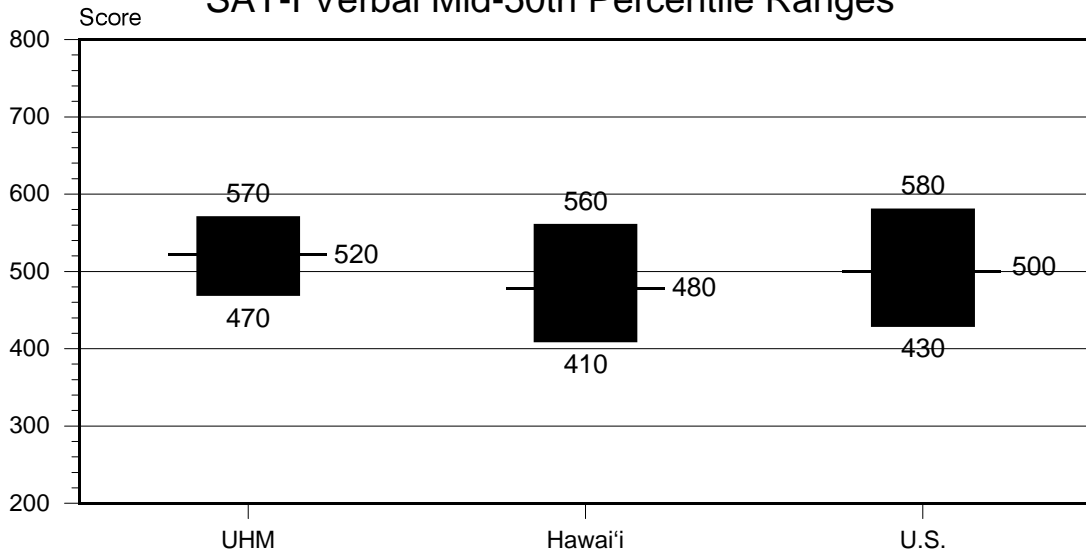
Figure 2
Average SAT-I Math



UHM = First-time freshmen entering the fall semester
Hawai'i = Hawai'i test takers
US = US test takers

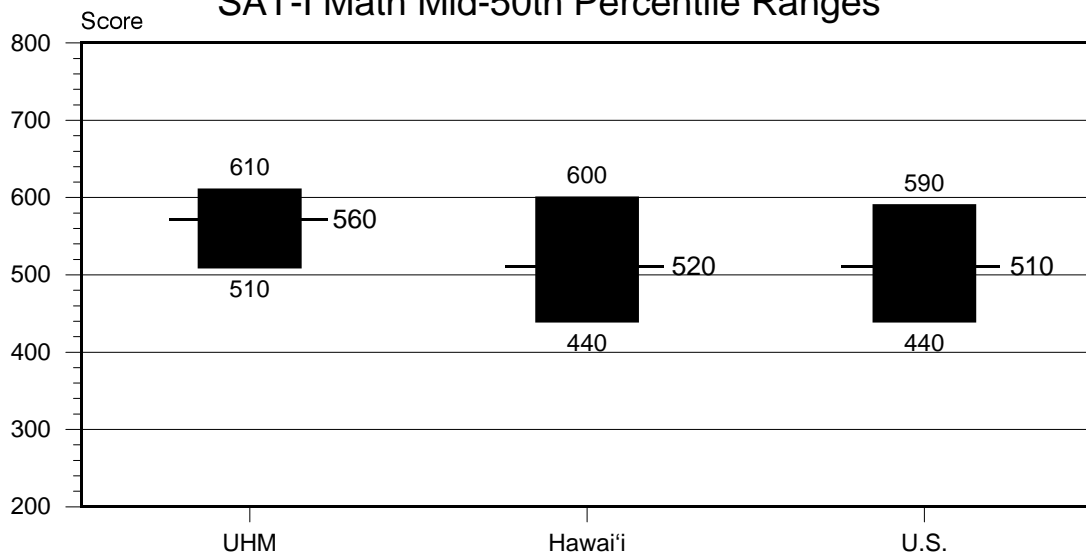
Note: All scores are recentered scores.

Figure 3
SAT-I Verbal Mid-50th Percentile Ranges



	UHM	Hawai'i	U.S.
Verbal 25-75th	470-570	410-560	430-580
Math 25-75th	510-610	440-600	440-590

Figure 4
SAT-I Math Mid-50th Percentile Ranges



Notes: - Lines represent 50th percentile scores.
- All scores are recentered scores.

TABLE 1
 AVERAGE SCHOLASTIC ASSESSMENT TEST I (SAT-I) SCORES
 (RECENTERED SCALE)
 1986 TO 2000

Year	VERBAL			MATH		
	UHM 1/	Hawai'i 2/	US 3/	UHM	Hawai'i	US
1986	524	485	509	557	502	500
1987	533	485	507	561	502	501
1988	528	487	505	557	504	501
1989	524	485	504	557	506	502
1990	524	485	500	557	506	501
1991	519	482	499	553	504	500
1992	519	477	500	557	499	501
1993	519	477	500	556	504	503
1994	515	477	499	557	504	504
1995	524	482	504	557	504	506
1996	522	485	505	565	510	508
1997	520	483	505	565	512	511
1998	527	483	505	570	513	512
1999	525	482	505	570	513	511
2000	526	488	505	566	519	514

Note: All scores are recentered scores.

1/ UHM: First-time freshmen entering the fall semester at the University of Hawai'i at Manoa.

2/ Hawai'i: Hawai'i test takers

3/ US: US test takers

Sources: UH Coordinated Admissions Program Information System (CAPIS) Reports CAP 33M and CAP 33V; Profile of College Bound Seniors National Report, and Profile of College Bound Seniors Hawai'i Report from the College Board Online internet site at www.collegeboard.org/sat

TABLE 2
SCHOLASTIC ASSESSMENT TEST I (SAT-I) SCORES
(RECENTERED SCALE)
2000 VERBAL PROFILES

SAT Score	VERBAL					
	UHM 1/ No. V%		Hawai'i 2/ No. V%		US 3/ No. V%	
750-800	15	1.0	103	1.4	21,675	1.7
700-740	28	1.9	148	2.0	36,760	2.9
650-690	80	5.5	324	4.4	76,045	6.0
600-640	145	10.0	597	8.2	130,720	10.4
550-590	261	18.1	909	12.4	180,905	14.4
500-540	402	27.8	1,309	17.9	222,606	17.7
450-490	307	21.3	1,312	17.9	216,965	17.2
400-440	151	10.5	1,177	16.1	174,056	13.8
350-390	34	2.4	800	10.9	110,181	8.7
300-340	15	1.0	420	5.7	55,688	4.4
250-290	4	0.3	127	1.7	20,410	1.6
200-240	2	0.1	99	1.4	14,267	1.1
Number	1,444		7,325		1,260,278	
Average Score	526		488		505	
25th Percentile	470		410		430	
50th Percentile	520		480		500	
75th Percentile	570		560		580	
Mid-50th Percentile Range 4/	470-570		410-560		430-580	

Notes: - Percentile describes the score below which a given percentage of the total number of scores occurred. For example, 25% of the students at UHM scored 470 or less in the verbal section, 25% of the Hawai'i test takers scored 410 or less, and 25% of the US test takers scored 430 or less.

- All scores are recentered.

1/ UHM: First-time freshmen entering the Fall 2000 semester at the University of Hawai'i at Manoa.

2/ Hawai'i: 2000 Hawai'i test takers

3/ US: 2000 US test takers

4/ Range of scores from the 25th to 75th percentile, respectively.

Sources: UH Coordinated Admissions Program Information System (CAPIS) Reports CAP 33M and CAP 33V; Profile of College Bound Seniors National Report, and Profile of College Bound Seniors Hawai'i Report from the College Board Online internet site at www.collegeboard.org/sat

TABLE 3
SCHOLASTIC ASSESSMENT TEST I (SAT-I) SCORES
(RECENTERED SCALE)
2000 MATH PROFILES

SAT Score	MATH					
	UHM 1/ No. V%		Hawai'i 2/ No. V%		US 3/ No. V%	
750-800	27	1.9	181	2.5	24,574	1.9
700-740	67	4.6	337	4.6	49,469	3.9
650-690	131	9.1	533	7.3	92,869	7.4
600-640	240	16.6	807	11.0	137,958	10.9
550-590	393	27.2	1,119	15.3	185,464	14.7
500-540	333	23.1	1,169	16.0	206,262	16.4
450-490	182	12.6	1,221	16.7	209,386	16.6
400-440	62	4.3	916	12.5	168,432	13.4
350-390	5	0.3	590	8.1	100,403	8.0
300-340	4	0.3	289	3.9	55,176	4.4
250-290	0	0.0	111	1.5	21,036	1.7
200-240	0	0.0	52	0.7	9,249	0.7
Number	1,444		7,325		1,260,278	
Average Score	566		519		514	
25th Percentile	510		440		440	
50th Percentile	560		520		510	
75th Percentile	610		600		590	
Mid-50th Percentile ... Range 4/	510-610		440-600		440-590	

Notes: - Percentile describes the score below which a given percentage of the total number of scores occurred. For example, 50% of the students at UHM scored 560 or less in the math section, 50% of the Hawai'i test takers scored 520 or less, and 50% of the US test takers scored 510 or less.

- All scores are recentered.

1/ UHM: First-time freshmen entering the Fall 2000 semester at the University of Hawai'i at Manoa.

2/ Hawai'i: 2000 Hawai'i test takers

3/ US: 2000 US test takers

4/ Range of scores from the 25th to 75th percentile, respectively.

Sources: UH Coordinated Admissions Program Information System (CAPIS) Reports CAP 33M and CAP 33V; Profile of College Bound Seniors National Report, and Profile of College Bound Seniors Hawai'i Report from the College Board Online internet site at www.collegeboard.org/sat

TABLE 4
 SCHOLASTIC ASSESSMENT TEST I (SAT-I) SCORES OF FIRST-TIME FRESHMEN
 (RECENTERED SCALE)
 UNIVERSITY OF HAWAI'I AT MANOA
 FALL 2000

	APPLIED			ACCEPTED			ENROLLED		
	Men	Women	Total	Men	Women	Total	Men	Women	Total
VERBAL:									
25th Percentile Score	460	450	460	490	480	480	480	470	470
50th Percentile Score	520	510	510	540	530	530	530	510	520
75th Percentile Score	580	570	580	600	580	590	580	570	570
Average Score	519	515	517	543	534	538	533	521	526
Mid-50th Percentile Range 1/	460-580	450-570	460-580	490-600	480-580	480-590	480-580	470-570	470-570
MATH:									
25th Percentile Score	500	480	490	530	510	520	520	500	510
50th Percentile Score	560	540	550	590	560	570	570	550	560
75th Percentile Score	630	600	610	650	620	630	630	600	610
Average Score	565	541	551	592	564	576	580	555	566
Mid-50th Percentile Range 1/	500-630	480-600	490-610	530-650	510-620	520-630	520-630	500-600	510-610

Notes: - Percentile describes the score below which a given percentage of the total number of scores occurred. For example, in Fall 2000, in the math section, 50% of the total students who applied to the University of Hawai'i at Manoa scored 550 or less, 50% of the students accepted scored 570 or less, and 50% of the students enrolled scored 560 or less.

- All scores are recentered

1/ Range of scores from the 25th to 75th percentile, respectively.

Source: UH Coordinated Admissions Program Information System (CAPIS) Reports CAP33M and CAP33V.