

SCHOLASTIC ASSESSMENT TEST I (SAT-I) SCORES

UNIVERSITY OF HAWAI'I AT MĀNOA

FALL 2003

Institutional Research Office

University of Hawai'i

June 2004

File Reference: Management and Planning Support Folder, Students

Reports available online at: <http://www.hawaii.edu/iro/maps.htm>

Figure 1
Average SAT-I Verbal

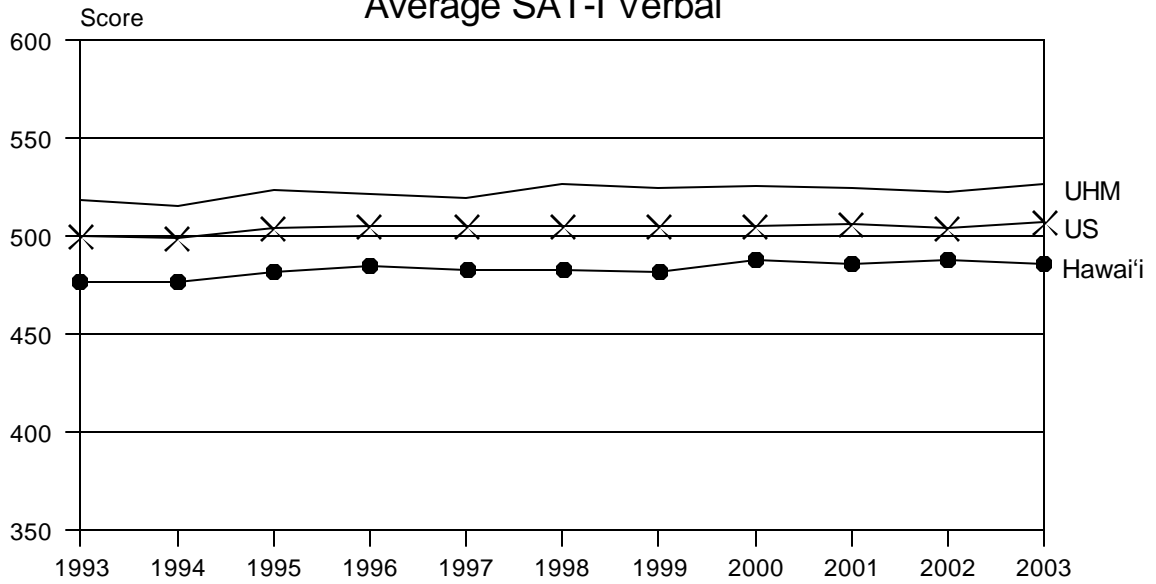
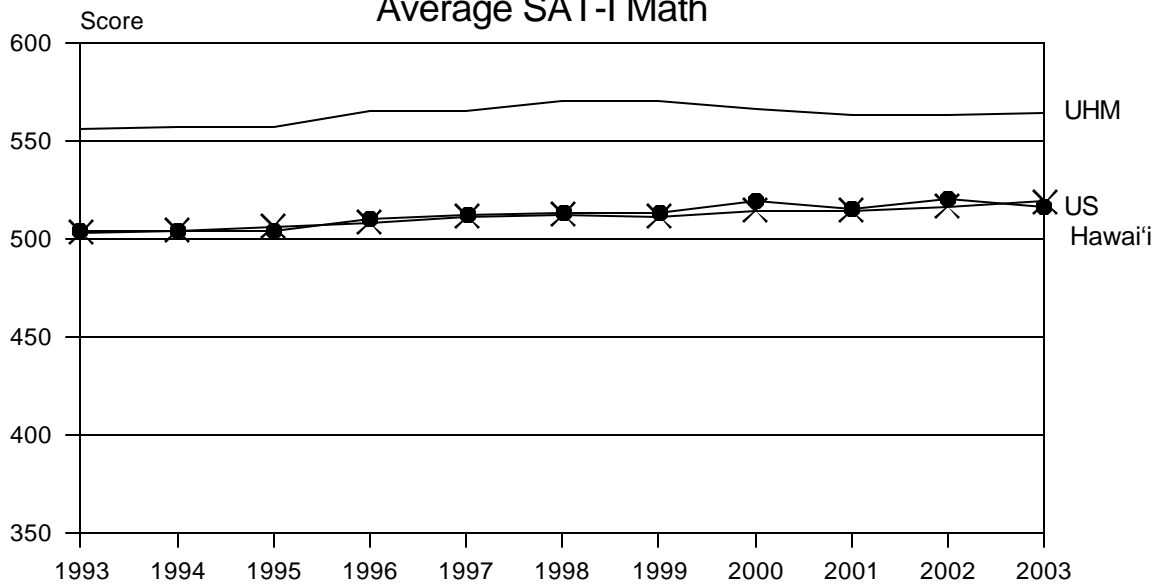


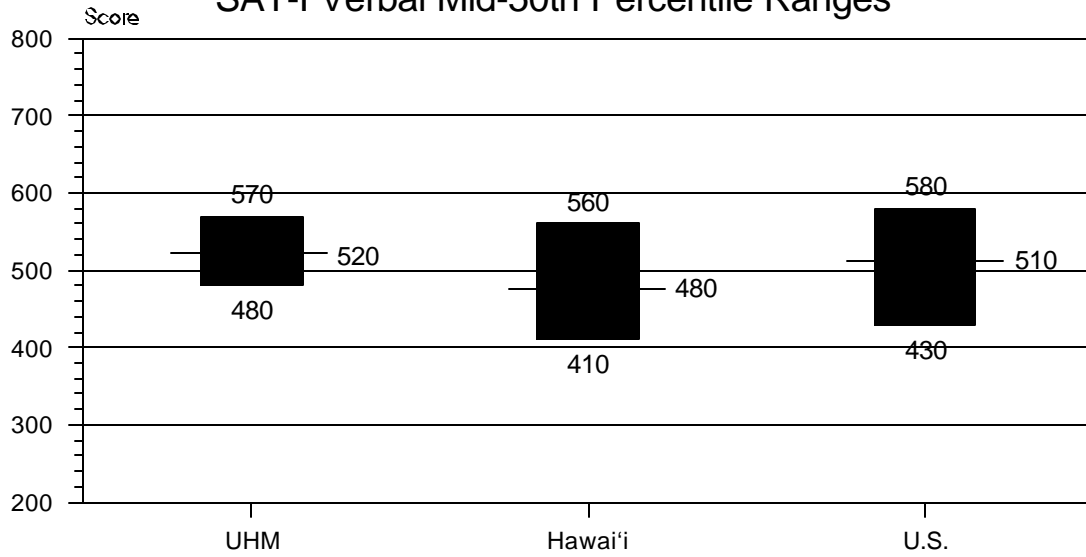
Figure 2
Average SAT-I Math



UHM = First-time freshmen entering the fall semester
Hawai'i = Hawai'i test takers
US = US test takers

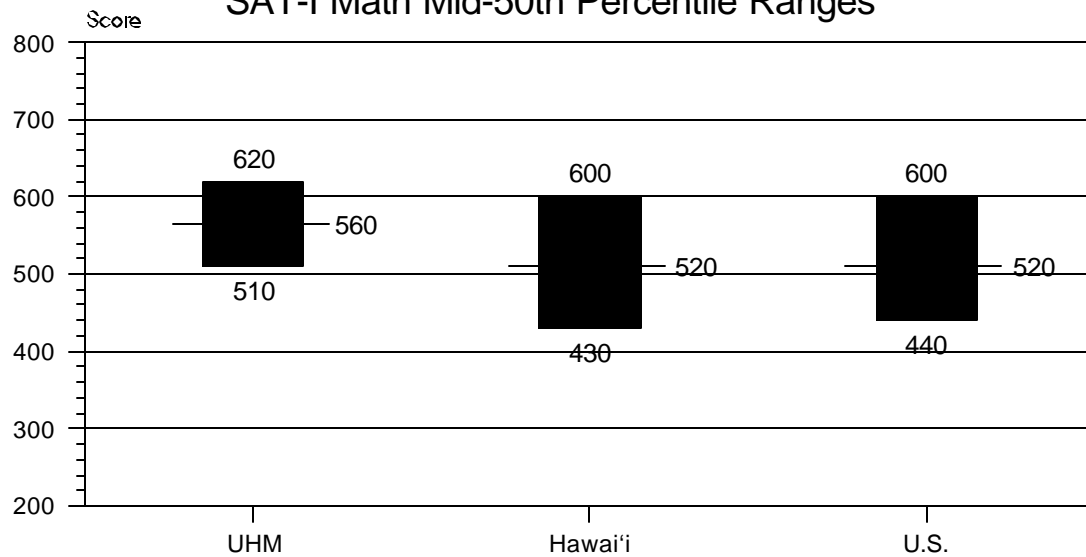
Note: All scores are recentered scores.

Figure 3
SAT-I Verbal Mid-50th Percentile Ranges



	UHM	Hawai'i	U.S.
Verbal 25-75th	480-570	410-560	430-580
Math 25-75th	510-620	430-600	440-600

Figure 4
SAT-I Math Mid-50th Percentile Ranges



Notes: - Lines represent 50th percentile scores.

- All scores are recentered scores.

TABLE 1
 AVERAGE SCHOLASTIC ASSESSMENT TEST I (SAT-I) SCORES
 (RECENTERED SCALE)
 1993 TO 2003

Year	VERBAL			MATH		
	UHM 1/	Hawai'i 2/	US 3/	UHM 1/	Hawai'i 2/	US 3/
1993	519	477	500	556	504	503
1994	515	477	499	557	504	504
1995	524	482	504	557	504	506
1996	522	485	505	565	510	508
1997	520	483	505	565	512	511
1998	527	483	505	570	513	512
1999	525	482	505	570	513	511
2000	526	488	505	566	519	514
2001.....	525	486	506	563	515	514
2002.....	523	488	504	563	520	516
2003.....	527	486	507	564	516	519

Note: All scores are recentered scores.

1/ UHM: First-time freshmen entering the fall semester at the University of Hawai'i at Manoa.

2/ Hawai'i: Hawai'i test takers

3/ US: US test takers

Sources: Hawai'i and US data from Profile of College Bound Seniors National Report, and Profile of College Bound Seniors Hawai'i Report from College Board Online web site. UHM data prior to Fall 2002 from UH Coordinated Admissions Program Information System (CAPIS) report CAP33M and CAP 33V. Fall 2002 UHM data from Student Information Management System (SIMS). Fall 2003 UHM data from Banner.

TABLE 2
SCHOLASTIC ASSESSMENT TEST I (SAT-I) SCORES
(RECENTERED SCALE)
2003 VERBAL PROFILES

SAT Score	VERBAL					
	UHM 1/ No. V%		Hawai'i 2/ No. V%		US 3/ No. V%	
750-800	5	0.3	62	0.8	25,114	1.8
700-749	23	1.4	163	2.2	41,283	2.9
650-699	72	4.2	342	4.6	88,799	6.3
600-649	212	12.5	670	9.0	152,518	10.8
550-599	348	20.5	910	12.2	204,601	14.5
500-549	449	26.4	1,221	16.4	243,120	17.3
450-499	393	23.1	1,423	19.1	245,615	17.5
400-449	145	8.5	1,208	16.2	190,406	13.5
350-399	41	2.4	755	10.2	116,808	8.3
300-349	10	0.6	406	5.5	58,372	4.2
250-299	0	0.0	183	2.5	25,332	1.8
200-249	0	0.0	95	1.3	14,356	1.0
Number	1,698		7,438		1,406,324	
Average Score	527		486		507	
25th Percentile	480		410		430	
50th Percentile	520		480		510	
75th Percentile	570		560		580	
Mid-50th Percentile Range 4/	480-570		410-560		430-580	

Notes: - Percentile describes the score below which a given percentage of the total number of scores occurred. For example, 25% of the students at UHM scored 480 or less in the verbal section, 25% of the Hawai'i test takers scored 410 or less, and 25% of the US test takers scored 430 or less.

- All scores are recentered.

1/ UHM: First-time freshmen entering the Fall 2003 semester at the University of Hawai'i at Manoa.

2/ Hawai'i: 2003 Hawai'i test takers

3/ US: 2003 US test takers

4/ Range of scores from the 25th to 75th percentile, respectively.

Sources: Hawai'i and US data from Profile of College Bound Seniors National Report, and Profile of College Bound Seniors Hawai'i Report from College Board Online web site. UHM data from Banner.

TABLE 3
SCHOLASTIC ASSESSMENT TEST I (SAT-I) SCORES
(RECENTERED SCALE)
2003 MATH PROFILES

SAT Score	MATH					
	UHM 1/ No. V%		Hawai'i 2/ No. V%		US 3/ No. V%	
750-800	16	0.9	162	2.2	30,440	2.2
700-749	59	3.5	306	4.1	61,772	4.4
650-699	188	11.1	609	8.2	115,018	8.2
600-649	300	17.7	832	11.2	160,694	11.4
550-599	428	25.2	1,138	15.3	208,201	14.8
500-549	406	23.9	1,189	16.0	228,409	16.2
450-499	219	12.9	1,124	15.1	220,970	15.7
400-449	64	3.8	941	12.7	180,935	12.9
350-399	14	0.8	618	8.3	111,892	8.0
300-349	4	0.2	320	4.3	54,601	3.9
250-299	0	0.0	122	1.6	21,864	1.6
200-249	0	0.0	77	1.0	11,528	0.8
Number	1,698		7,438		1,406,324	
Average Score	564		516		519	
25th Percentile	510		430		440	
50th Percentile	560		520		520	
75th Percentile	620		600		600	
Mid-50th Percentile Range 4/	510-620		430-600		440-600	

Notes: - Percentile describes the score below which a given percentage of the total number of scores occurred. For example, 50% of the students at UHM scored 560 or less in the math section, 50% of the Hawai'i test takers scored 520 or less, and 50% of the US test takers scored 520 or less.

- All scores are recentered.

1/ UHM: First-time freshmen entering the Fall 2003 semester at the University of Hawai'i at Manoa.

2/ Hawai'i: 2003 Hawai'i test takers

3/ US: 2003 US test takers

4/ Range of scores from the 25th to 75th percentile, respectively.

Sources: Hawai'i and US data from Profile of College Bound Seniors National Report, and Profile of College Bound Seniors Hawai'i Report from College Board Online web site. UHM data from Banner.

TABLE 4
SCHOLASTIC ASSESSMENT TEST I (SAT-I) SCORES OF FIRST-TIME FRESHMEN
(RECENTERED SCALE)
UNIVERSITY OF HAWAII AT MANOA
FALL 2003

	APPLIED			ACCEPTED			ENROLLED		
	Men	Women	Total	Men	Women	Total	Men	Women	Total
VERBAL:									
25th Percentile Score	470	460	460	490	490	490	480	480	480
50th Percentile Score	530	520	520	540	530	540	530	520	520
75th Percentile Score	580	570	580	600	590	590	580	570	570
Average Score	526	518	521	545	539	541	529	526	527
Mid-50th Percentile Range 1/	470-580	460-570	460-580	490-600	490-590	490-590	480-580	480-570	480-570
MATH:									
25th Percentile Score	510	480	490	540	510	520	530	500	510
50th Percentile Score	570	540	550	590	560	570	580	540	560
75th Percentile Score	630	600	610	650	610	630	630	590	620
Average Score	567	537	550	592	561	575	582	548	564
Mid-50th Percentile Range 1/	510-630	480-600	490-610	540-650	510-610	520-630	530-630	500-590	510-620

Notes: - Percentile describes the score below which a given percentage of the total number of scores occurred. For example, in Fall 2003, in the math section, 50% of the total students who applied to the University of Hawaii at Manoa scored 550 or less, 50% of the students accepted scored 570 or less, and 50% of the students enrolled scored 560 or less.

- All scores are recentered

1/ Range of scores from the 25th to 75th percentile, respectively.

Source: Banner Student Information System.