

FALL ENROLLMENT REPORT
UNIVERSITY OF HAWAI'I AT HILO
FALL 1997

Institutional Research Office
University of Hawai'i
October 1997

File Reference: Management and Planning Support Folder, Enrollment

Reports now available online at: www2.hawaii.edu/iro/

University of Hawai'i at Hilo
Regular Students

Figure 1
Headcount and FTE Enrollment

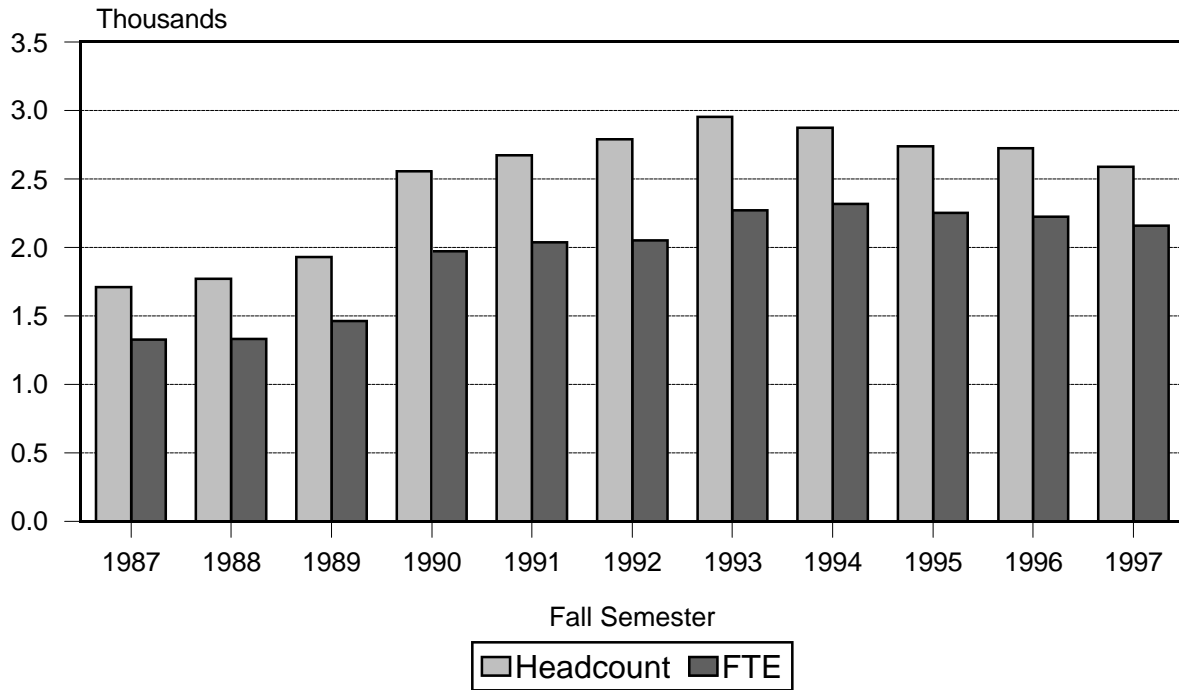
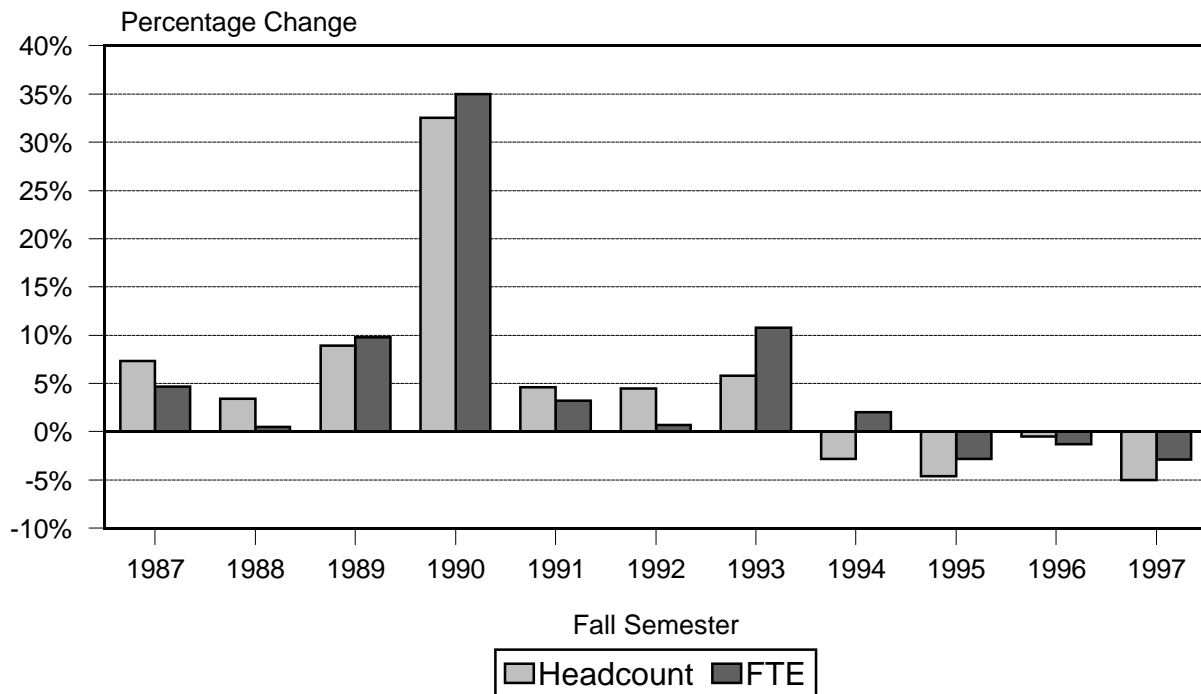


Figure 2
Percentage Change in Headcount and FTE



University of Hawai'i at Hilo
Regular Students

Figure 3
Enrollment of Classified and Unclassified

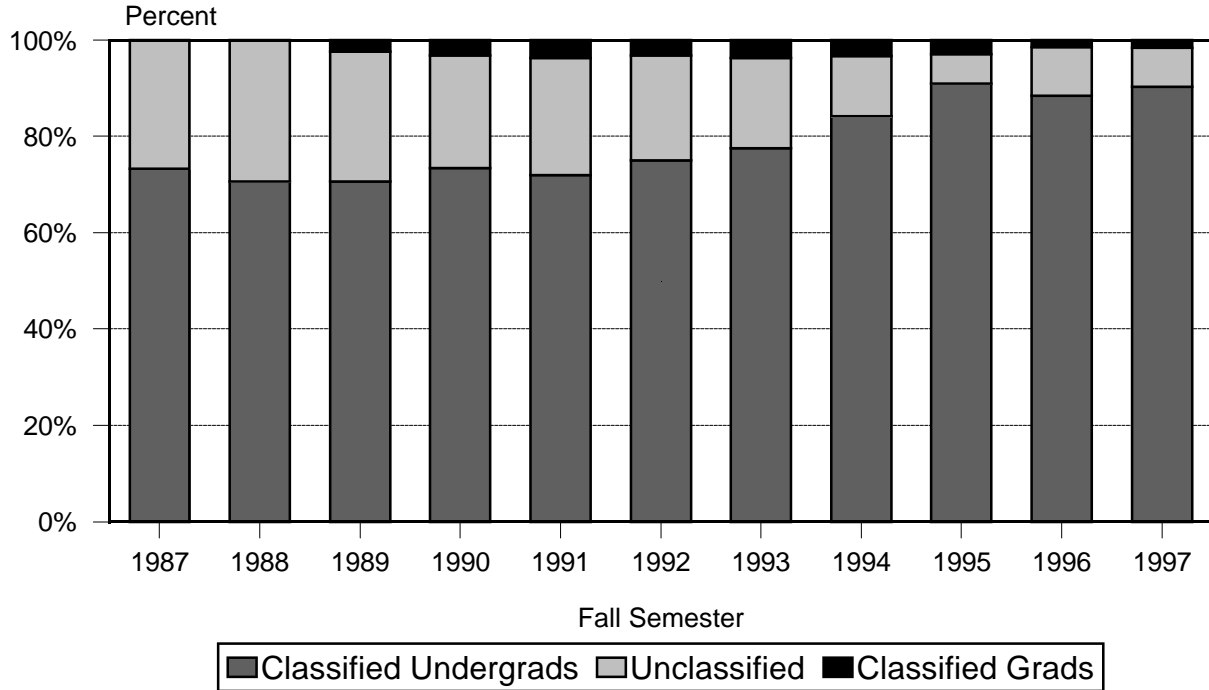
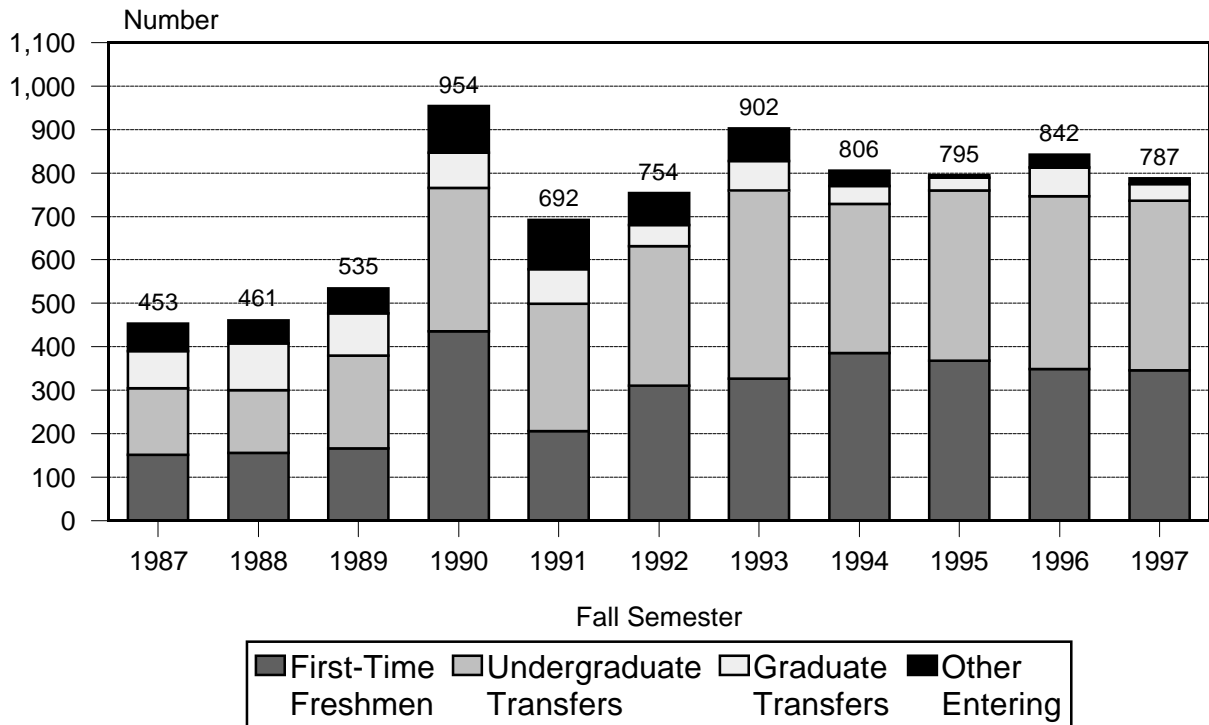


Figure 4
Enrollment of Entering Students

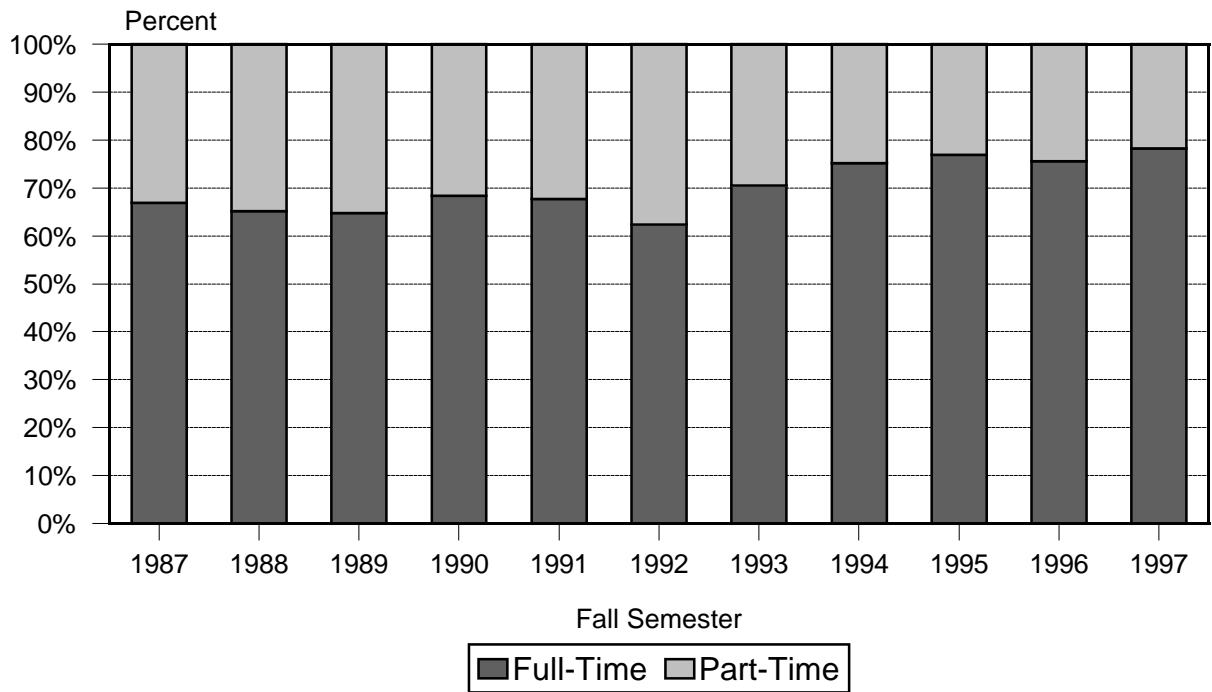


University of Hawai'i at Hilo
Regular Students

Figure 5
Enrollment by Gender



Figure 6
Enrollment by Attendance Status



University of Hawai'i at Hilo
Regular Students

Figure 7
Mean Age

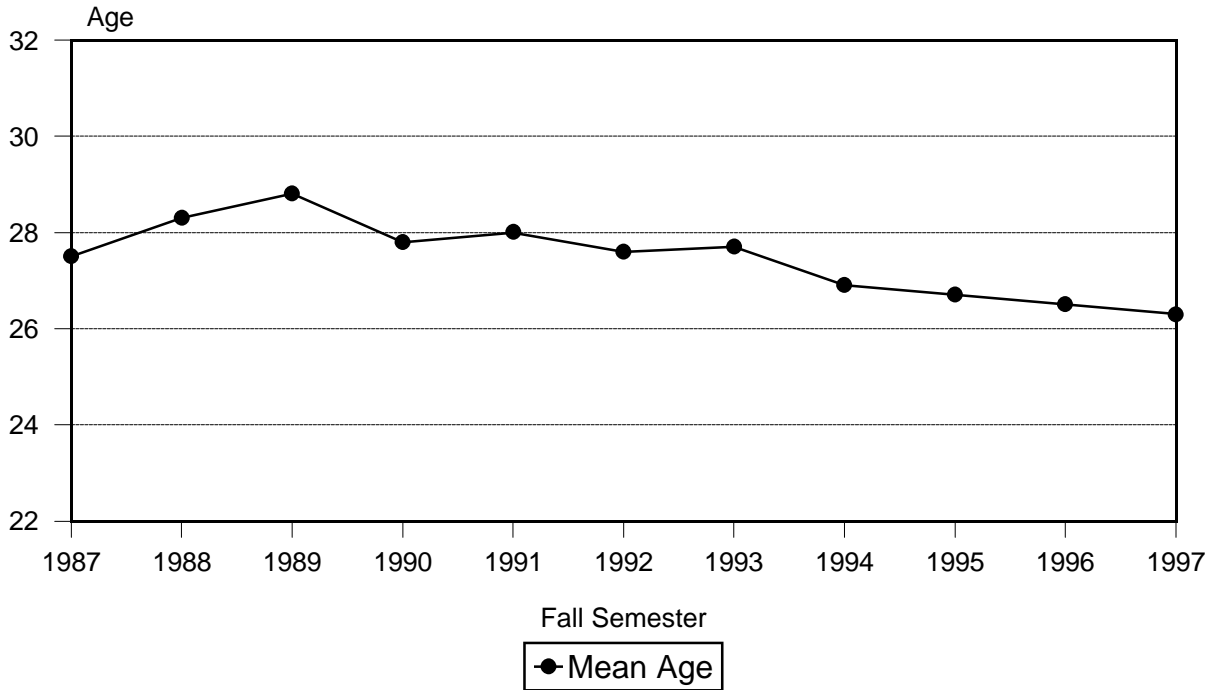


Figure 8
Enrollment by Ethnicity

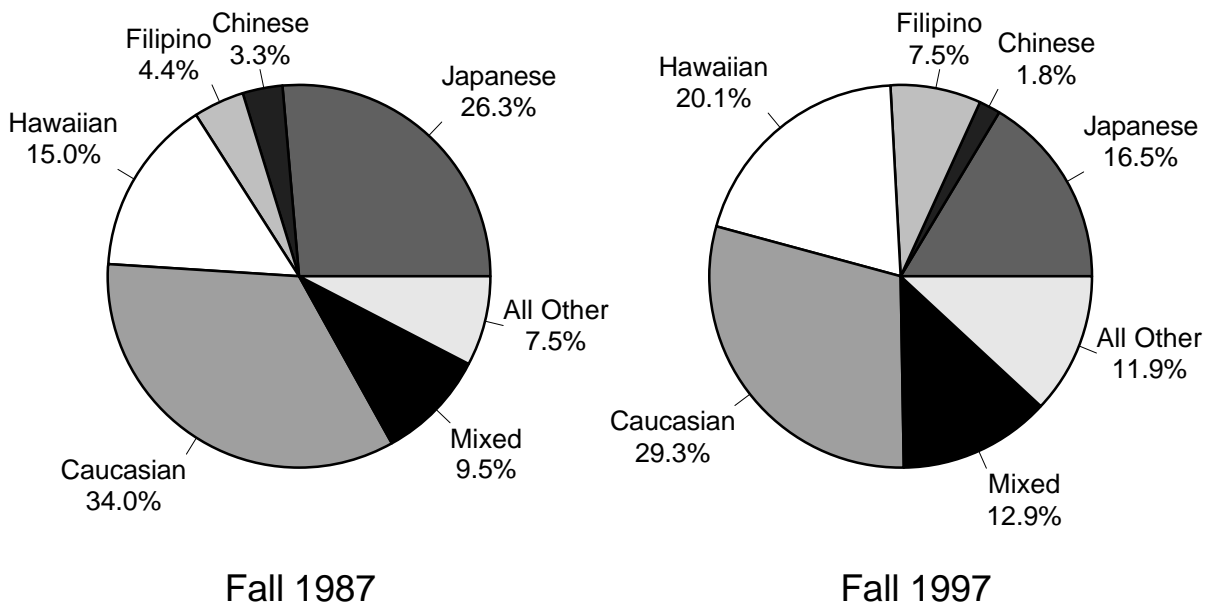


TABLE 1
HEADCOUNT AND FTE ENROLLMENT FOR REGULAR AND SPECIAL STUDENTS
UNIVERSITY OF HAWAI'I AT HILO
FALL 1997

	TOTAL		Undergraduates		Graduates	
	Headcount	FTE	Headcount	FTE	Headcount	FTE
GRAND TOTAL	2,639	2,174	2,462	2,093	177	81
Classified Students	2,379	2,098	2,336	2,042	43	56
Unclassified Students	260	76	126	51	134	25
Regular Student Enrollment	2,587	2,159	2,410	2,078	177	81
Classified Students	2,379	2,098	2,336	2,042	43	56
Unclassified Students	208	61	74	36	134	25
Special Student Enrollment	52	15	52	15		
Concurrent Registrants	40	11	40	11		
Early Admits	12	4	12	4		

TABLE 2
 HEADCOUNT ENROLLMENT OF REGULAR STUDENTS, BY EDUCATIONAL LEVEL
 UNIVERSITY OF HAWAI'I AT HILO
 FALL 1987 TO FALL 1997

FALL SEMESTER 1/	TOTAL		CLASSIFIED						UNCLASSIFIED			NO DATA
	No.	% Chng	Subt	Fresh	Soph	Junior	Senior	Grad 2/	Subt	Undergrad	Grad	
1987	1,711	7.3	1,254	262	306	298	388		457	229	228	
1988	1,769	3.4	1,249	267	306	316	360		520	230	290	
1989	1,927	8.9	1,408	274	327	352	407	48	519	278	241	
1990	2,553	32.5	1,957	677	395	363	439	83	596	395	201	
1991	2,670	4.6	2,022	608	451	422	440	101	648	440	208	
1992	2,790	4.5	2,183	551	527	484	529	92	605	424	181	2
1993	2,953	5.8	2,397	549	569	552	617	110	555	376	179	1
1994	2,870	-2.8	2,509	568	533	595	717	96	361	209	152	
1995	2,737	-4.6	2,571	563	549	601	775	83	166	70	96	
1996	2,723	-0.5	2,449	553	504	600	751	41	274	100	174	
1997 3/	2,587	-5.0	2,379	494	513	606	723	43	208	74	134	

1/ Beginning in Fall 1991, Hawai'i Community College was transferred organizationally from UH Hilo to the UH Community Colleges. Enrollment counts for prior years have been adjusted accordingly.

2/ Certificate in Education program first started in Spring 1989.

3/ The 2,587 headcount includes data on UH Hilo activities at West Hawai'i. See Appendixes A and B for selected characteristics on West Hawai'i students. (Data pertaining to Hawai'i Community College activities at West Hawai'i are also included in the UH Community College Fall Enrollment Report.)

TABLE 3
 FTE ENROLLMENT OF REGULAR STUDENTS, BY EDUCATIONAL LEVEL
 UNIVERSITY OF HAWAI'I AT HILO
 FALL 1987 TO FALL 1997

FALL SEMESTER 1/	TOTAL		CLASSIFIED				UNCLASSIFIED			NO DATA
	No.	% Chng	Subt	Lower	Upper	Grad 2/	Subt	Undergrad	Grad	
1987	1,325	4.7	1,118	526	592		207	106	101	
1988	1,331	0.5	1,108	527	581		223	104	119	
1989	1,461	9.8	1,258	553	671	34	203	117	86	
1990	1,972	35.0	1,734	969	702	63	238	175	63	
1991	2,035	3.2	1,764	943	739	82	271	212	59	
1992	2,049	0.7	1,815	902	854	59	233	176	57	1
1993	2,271	10.8	2,058	976	994	88	212	163	49	1
1994 3/	2,317	2.0	2,170	973	1,117	80	147	95	52	
1995	2,253	-2.8	2,194	969	1,149	76	59	33	26	
1996	2,223	-1.3	2,142	948	1,147	47	81	45	36	
1997	2,159	-2.9	2,098	902	1,140	56	61	36	25	

1/ Beginning in Fall 1991, Hawai'i Community College was transferred organizationally from UH Hilo to the UH Community Colleges. Enrollment counts for all years have been adjusted accordingly.

2/ Certificate in Education program first started in Spring 1989.

3/ Denominator used in the calculation of graduate unclassified FTE was changed from 15 to 12, effective Fall 1994. Calculations for prior years have not been adjusted.

TABLE 4
 SELECTED CHARACTERISTICS OF REGULAR STUDENTS
 UNIVERSITY OF HAWAI'I AT HILO
 FALL 1993 TO FALL 1997

CHARACTERISTIC	FALL SEMESTER				
	1993	1994	1995	1996	1997
TOTAL	2,953	2,870	2,737	2,723	2,587
MAJOR (% Distribution):					
College of Agriculture	4.5	4.3	4.1	4.7	5.2
College of Arts & Sciences	76.7	83.1	89.8	85.2	86.7
Unclassified	18.8	12.6	6.1	10.1	8.0
No Data	<0.1				
EDUCATIONAL LEVEL (% Distribution):					
Classified	81.2	87.4	93.9	89.9	92.0
Undergraduate	77.4	84.1	90.9	88.4	90.3
Freshmen	18.6	19.8	20.6	20.3	19.1
Sophomores	19.3	18.6	20.1	18.5	19.8
Juniors	18.7	20.7	22.0	22.0	23.4
Seniors	20.9	25.0	28.3	27.6	27.9
Graduate (Certificate in Ed)	3.7	3.3	3.0	1.5	1.7
Unclassified	18.8	12.6	6.1	10.1	8.0
Undergraduate	12.7	7.3	2.6	3.7	2.9
Graduate	6.1	5.3	3.5	6.4	5.2
No Data	<0.1				
GENDER (% Distribution):					
Men	40.7	40.8	39.3	39.3	40.0
Women	59.3	59.2	60.7	60.7	60.0
PERMANENT HOME ADDRESS (% Distr):					
Hawai'i	85.0	83.2	82.6	81.6	82.6
Other than Hawai'i	15.0	16.8	17.4	18.4	17.4
No Data			<0.1		<0.1
TUITION STATUS (% Distribution):					
Residents	84.3	82.6	82.1	81.7	81.5
Resident	80.3	78.3	78.3	78.0	78.5
Resident Converted	4.0	4.3	3.8	3.6	3.0
Non-Residents	15.7	17.4	17.9	18.3	18.5
Not-Exempted	9.1	9.7	10.2	10.2	8.3
Western Undergrad Exchange 1/					2.3
Exempted	6.6	7.7	7.7	8.2	7.9
Military	0.3	0.3	0.2	0.1	0.2
Faculty / Staff	0.1	0.1	<0.1	<0.1	<0.1
Institutional	4.1	4.9	4.9	5.0	4.8
Student Exchange	0.8	0.8	0.7	1.2	1.2
Pacific-Asian	1.2	1.0	1.3	0.9	0.9
East-West Center 2/		0.2	0.1	0.2	0.2
Ethnic Hawaiian 3/	0.2	0.4	0.5	0.7	0.5
MEAN AGE OF STUDENTS (in years)	27.7	26.9	26.7	26.5	26.3
AGE (% Distribution):					
18-24 years	56.0	58.7	60.5	61.3	62.3
25 and over	44.0	41.3	39.5	38.7	37.7

Table 4 (cont.)

CHARACTERISTIC	FALL SEMESTER				
	1993	1994	1995	1996	1997
U.S. CITIZENSHIP	90.9	89.7	89.8	90.3	90.4
ATTENDANCE STATUS (% Distribution):					
Full-Time	70.5	75.2	76.9	75.6	78.2
Part-Time	29.5	24.8	23.1	24.4	21.8
No Data	<0.1				
TOTAL STUDENT SEM HOURS TAKEN	33,822	34,356	33,515	33,082	32,133
Full-Time	29,385	30,580	30,101	29,905	29,278
Part-Time	4,424	3,776	3,414	3,177	2,855
No Data	13				
AVERAGE SEMESTER HOURS TAKEN	11.5	12.0	12.2	12.1	12.4
Full-Time Students	14.1	14.2	14.3	14.5	14.5
Part-Time Students	5.1	5.3	5.4	4.8	5.1
No Data	13.0				
REGISTRATION STATUS (% Distribution):					
Continuing	62.0	66.3	66.1	63.2	63.7
Returning	7.5	5.6	4.9	5.9	5.9
First-Time	13.6	14.7	13.6	13.9	13.8
Transfer	17.0	13.4	15.4	17.0	16.6
ETHNICITY (% Distribution):					
Asian / Pacific Islander	51.0	52.6	53.2	53.7	54.6
Japanese	17.5	16.7	16.5	17.0	16.5
Chinese	2.5	2.4	2.0	1.9	1.8
Korean	1.0	1.0	0.8	0.9	0.8
Filipino	6.4	7.4	7.3	7.3	7.5
Hawaiian / Part-Hawaiian	17.4	17.8	19.1	18.4	20.1
Pacific Islander	4.0	4.9	4.9	5.3	4.9
Other Asian	0.5	0.5	0.4	0.5	0.5
Mixed Asian / Pacific Islander	1.8	2.0	2.1	2.5	2.5
Hispanic	1.6	1.8	1.8	1.7	1.7
Puerto Rican	0.4	0.7	0.5	0.4	0.5
Other Hispanic	0.8	0.6	0.9	0.7	0.5
Mixed Hispanic	0.4	0.5	0.4	0.6	0.7
Caucasian	35.0	31.8	30.9	30.2	29.3
Portuguese	2.4	2.3	1.9	1.9	1.7
Other Caucasian	32.6	29.5	29.0	28.4	27.6
African American	0.7	1.0	0.8	0.8	0.8
American Indian / Alaska Native	0.8	0.9	0.7	0.6	0.6
Mixed Ethnic Background	10.9	11.8	12.6	13.0	12.9

1/ Category added Fall 1997.

2/ Category added Fall 1994.

3/ Category added Fall 1993.

TABLE 5
 SELECTED CHARACTERISTICS OF REGULAR STUDENTS
 UNIVERSITY OF HAWAII AT HILO
 FALL 1997

CHARACTERISTIC	TOTAL		CLASSIFIED				UNCLASSIFIED	
	No.	V%	Agriculture No.	V%	Arts & Science No.	V%	No.	V%
TOTAL	2,587	100.0	135	100.0	2,244	100.0	208	100.0
H%		100.0		5.2		86.7		8.0
EDUCATIONAL LEVEL:								
Classified	2,379	92.0	135	100.0	2,244	98.1		
Undergraduate	2,336	90.3	135	100.0	2,201	98.1		
Freshmen	494	19.1	31	23.0	463	20.6		
Sophomores	513	19.8	35	25.9	478	21.3		
Juniors	606	23.4	31	23.0	575	25.6		
Seniors	723	27.9	38	28.1	685	30.5		
Graduate (Certificate in Ed)	43	1.7			43	1.9		
Unclassified	208	8.0					208	100.0
Undergraduate	74	2.9					74	35.6
Graduate	134	5.2					134	64.4
GENDER:								
Men	1,036	40.0	76	56.3	898	40.0	62	29.8
Women	1,551	60.0	59	43.7	1,346	60.0	146	70.2
PERMANENT HOME ADDRESS:								
Hawai'i	2,137	82.6	112	83.0	1,822	81.2	203	97.6
O'ahu	278	10.7	18	13.3	220	9.8	40	19.2
Honolulu	87	3.4	3	2.2	67	3.0	17	8.2
Leeward	120	4.6	9	6.7	99	4.4	12	5.8
Windward	71	2.7	6	4.4	54	2.4	11	5.3
Hawai'i	1,693	65.4	79	58.5	1,457	64.9	157	75.5
Kaua'i	73	2.8	7	5.2	65	2.9	1	0.5
Maui County	93	3.6	8	5.9	80	3.6	5	2.4
Other than Hawai'i	449	17.4	23	17.0	421	18.8	5	2.4
U.S. Mainland	280	10.8	16	11.9	260	11.6	4	1.9
U.S. Possessions	84	3.2	3	2.2	80	3.6	1	0.5
Foreign	85	3.3	4	3.0	81	3.6		
No Data	1	<0.1			1	<0.1		
TUITION STATUS:								
Residents	2,109	81.5	118	87.4	1,793	79.9	198	95.2
Resident	2,031	78.5	112	83.0	1,722	76.7	197	94.7
Resident Converted	78	3.0	6	4.4	71	3.2	1	0.5
Non-Residents	478	18.5	17	12.6	451	20.1	10	4.8
Not Exempted	215	8.3	9	6.7	200	8.9	6	2.9
Western Undergrad Exchange 1/	59	2.3	2	1.5	57	2.5		
Exempted	204	7.9	6	4.4	194	8.6	4	1.9
Military	6	0.2			5	0.2	1	0.5
Faculty / Staff	1	<0.1					1	0.5
Institutional	124	4.8	3	2.2	119	5.3	2	1.0
Student Exchange	32	1.2	2	1.5	30	1.3		
Pacific-Asian	22	0.9			22	1.0		
East-West Center	5	0.2	1	0.7	4	0.2		
Ethnic Hawaiian	14	0.5			14	0.6		
AGE:								
Mean Age (in years)	26.3		25.6		25.4		36.7	
Under 18	75	2.9	3	2.2	68	3.0	4	1.9
18-19	570	22.0	34	25.2	529	23.6	7	3.4
20-21	509	19.7	25	18.5	476	21.2	8	3.8
22-24	458	17.7	22	16.3	423	18.9	13	6.3
25-29	310	12.0	18	13.3	261	11.6	31	14.9
30-34	153	5.9	9	6.7	114	5.1	30	14.4
35-59	496	19.2	24	17.8	364	16.2	108	51.9
60 and over	16	0.6			9	0.4	7	3.4
CITIZENSHIP:								
U.S. Citizens	2,339	90.4	129	95.6	2,007	89.4	203	97.6
Other Nationalities	248	9.6	6	4.4	237	10.6	5	2.4

Table 5 (cont.)

CHARACTERISTIC	TOTAL No. V%		CLASSIFIED				UNCLASSIFIED No. V%	
			Agriculture No. V%		Arts & Science No. V%			
ATTENDANCE STATUS:								
Full-Time	2,022	78.2	115	85.2	1,879	83.7	28	13.5
Part-Time	565	21.8	20	14.8	365	16.3	180	86.5
TOTAL STUDENT SEM HRS TAKEN								
Full-Time	32,133		1,781		29,518		834	
Part-Time	29,278		1,651		27,274		353	
Part-Time	2,855		130		2,244		481	
AVERAGE SEMESTER HOURS TAKEN ...								
Full-Time Students		12.4		13.2		13.2		4.0
Full-Time Students		14.5		14.4		14.5		12.6
Part-Time Students		5.1		6.5		6.1		2.7
FTE STUDENT ENROLLMENT								
Classified	2,159		119		1,979		61	
Classified	2,098		119		1,979			
Lower Division (4-yr)	902		56		846			
Upper Division	1,140		63		1,077			
Graduate (Certificate in Ed)	56				56			
Unclassified	61						61	
Undergraduate	36						36	
Graduate	25						25	
LOCAL ADDRESS:								
South Hilo	1,846	71.4	92	68.1	1,648	73.4	106	51.0
North Hilo	28	1.1	1	0.7	23	1.0	4	1.9
Hamakua	48	1.9	3	2.2	45	2.0		
North Kohala	15	0.6	3	2.2	12	0.5		
South Kohala	70	2.7	5	3.7	59	2.6	6	2.9
North Kona	77	3.0	2	1.5	65	2.9	10	4.8
South Kona	31	1.2	1	0.7	25	1.1	5	2.4
Ka'u	32	1.2	3	2.2	27	1.2	2	1.0
Puna	395	15.3	24	17.8	339	15.1	32	15.4
Neighbor Islands	44	1.7	1	0.7	1		42	20.2
No Data	1	<0.1					1	0.5
REGISTRATION STATUS:								
Continuing	1,648	63.7	92	68.1	1,474	65.7	82	39.4
Returning	152	5.9	1	0.7	88	3.9	63	30.3
First-Time	357	13.8	18	13.3	328	14.6	11	5.3
Transfer	430	16.6	24	17.8	354	15.8	52	25.0
ETHNICITY:								
Asian / Pacific Islander	1,413	54.6	60	44.4	1,235	55.0	118	56.7
Japanese	427	16.5	15	11.1	345	15.4	67	32.2
Chinese	47	1.8	3	2.2	35	1.6	9	4.3
Korean	21	0.8			21	0.9		
Filipino	194	7.5	3	2.2	181	8.1	10	4.8
Hawaiian / Part-Hawaiian	519	20.1	32	23.7	459	20.5	28	13.5
Pacific Islander	128	4.9	3	2.2	123	5.5	2	1.0
Other Asian	12	0.5			12	0.5		
Mixed Asian / Pacific Islander	65	2.5	4	3.0	59	2.6	2	1.0
Hispanic	44	1.7	2	1.5	39	1.7	3	1.4
Puerto Rican	13	0.5	1	0.7	12	0.5		
Other Hispanic	14	0.5			13	0.6	1	0.5
Mixed Hispanic	17	0.7	1	0.7	14	0.6	2	1.0
Caucasian	759	29.3	46	34.1	649	28.9	64	30.8
Portuguese	45	1.7	2	1.5	41	1.8	2	1.0
Other Caucasian	714	27.6	44	32.6	608	27.1	62	29.8
African American	21	0.8	1	0.7	19	0.8	1	0.5
American Indian / Alaska Native	15	0.6			15	0.7		
Mixed Ethnic Background	335	12.9	26	19.3	287	12.8	22	10.6

1/ Western Undergraduate Exchange students, who pay 1.5 times the resident tuition. Category added Fall 1997.

TABLE 6
DISTRIBUTION OF MAJORS BY EDUCATIONAL LEVEL
UNIVERSITY OF HAWAI'I AT HILO
FALL 1997

MAJOR	TOTAL		UNDERGRADUATES						GRADUATES		
	No.	V%	Subt	Fresh	Soph	Jr	Sr	Uncls	Subt	Class	Uncls
GRAND TOTAL	2,639	100.0	2,462	494	513	606	723	126	177	43	134
REGULAR STUDENTS	2,587	98.0	2,410	494	513	606	723	74	177	43	134
H%		100.0	93.2	19.1	19.8	23.4	27.9	2.9	6.8	1.7	5.2
College of Agriculture	135	5.2	135	31	35	31	38				
College of Arts & Sciences	2,244	86.7	2,201	463	478	575	685		43	43	
Business & Economics	356	13.8	356	72	79	95	110				
Business Admin	336	13.0	336	69	77	90	100				
Economics	20	0.8	20	3	2	5	10				
Humanities	326	12.6	326	56	60	88	122				
Art	49	1.9	49	11	7	19	12				
English	77	3.0	77	2	9	33	33				
Hawaiian Studies	103	4.0	103	27	24	13	39				
Japanese Studies	22	0.9	22	3	4	3	12				
Music	16	0.6	16	3	2	4	7				
Philosophy	7	0.3	7	3	1	1	2				
Speech	52	2.0	52	7	13	15	17				
Natural Sciences	528	20.4	528	105	100	138	185				
Biology	123	4.8	123	24	29	33	37				
Chemistry	18	0.7	18	2	3	8	5				
Computer Science	69	2.7	69	26	13	14	16				
Geology	22	0.9	22	3	2	8	9				
Marine Science	136	5.3	136	40	30	35	31				
Mathematics	38	1.5	38	5	12	8	13				
Natural Science	80	3.1	80	3	9	19	49				
Nursing	33	1.3	33			10	23				
Physics	9	0.3	9	2	2	3	2				
Social Sciences	501	19.4	458	42	80	160	176		43	43	
Anthropology	52	2.0	52	2	7	25	18				
Education Profession Cert	6	0.2							6	6	
Education Cert Elementary	11	0.4							11	11	
Education Cert Secondary	26	1.0							26	26	
Geography	24	0.9	24	1	3	9	11				
History	32	1.2	32	1	4	10	17				
Political Science	76	2.9	76	9	12	21	34				
Psychology	180	7.0	180	25	41	57	57				
Sociology	94	3.6	94	4	13	38	39				
Interdisciplinary Majors.....	175	6.8	175	16	35	54	70				
Liberal Studies	151	5.8	151	15	31	48	57				
Linguistics	24	0.9	24	1	4	6	13				
General/Pre-Professional.....	358	13.8	358	172	124	40	22				
General	269	10.4	269	147	96	20	6				
Pre-Engineering	1	<0.1	1	1							
Pre-Nursing	88	3.4	88	24	28	20	16				
Unclassified	208	8.0	74					74	134		134
SPECIAL STUDENTS	52	2.0	52					52			
Concurrent	40	76.9	40					40			
Early Admits	12	23.1	12					12			

Note: Percentage figures for the Regular and Special subtotals sum to the Grand Total of 100%. However, percentage figures by major sum to 100% for each subtotas.

TABLE 7
DISTRIBUTION OF MAJORS, REGULAR STUDENTS
UNIVERSITY OF HAWAII AT HILO
FALL 1993 TO FALL 1997

MAJOR	FALL SEMESTER									
	1993		1994		1995		1996		1997	
	No.	V%	No.	V%	No.	V%	No.	V%	No.	V%
TOTAL	2,953	100.0	2,870	100.0	2,737	100.0	2,723	100.0	2,587	100.0
Lower Division 1/	1,495	50.6	1,310	45.6	1,182	43.2	1,157	42.5	1,081	41.8
Upper Division	1,169	39.6	1,312	45.7	1,376	50.3	1,351	49.6	1,329	51.4
Graduate Division 2/	289	9.8	248	8.6	179	6.5	215	7.9	177	6.8
College of Agriculture	133	4.5	123	4.3	113	4.1	128	4.7	135	5.2
Lower Division	63	2.1	53	1.8	48	1.8	59	2.2	66	2.6
Upper Division	70	2.4	70	2.4	65	2.4	69	2.5	69	2.7
College of Arts & Sciences	2,264	76.7	2,386	83.1	2,458	89.8	2,321	85.2	2,244	86.7
Lower Division	1,055	35.7	1,048	36.5	1,064	38.9	998	36.7	941	36.4
Upper Division	1,099	37.2	1,242	43.3	1,311	47.9	1,282	47.1	1,260	48.7
Graduate Division	110	3.7	96	3.3	83	3.0	41	1.5	43	1.7
Business & Economics	370	12.5	417	14.5	391	14.3	382	14.0	356	13.8
Lower Division	162	5.5	175	6.1	144	5.3	147	5.4	151	5.8
Upper Division	208	7.0	242	8.4	247	9.0	235	8.6	205	7.9
Business Administration	345	11.7	389	13.6	365	13.3	358	13.1	336	13.0
Lower Division	155	5.2	166	5.8	142	5.2	145	5.3	146	5.6
Upper Division	190	6.4	223	7.8	223	8.1	213	7.8	190	7.3
Economics	25	0.8	28	1.0	26	0.9	24	0.9	20	0.8
Lower Division	7	0.2	9	0.3	2	0.1	2	0.1	5	0.2
Upper Division	18	0.6	19	0.7	24	0.9	22	0.8	15	0.6
Humanities	328	11.1	363	12.6	376	13.7	329	12.1	326	12.6
Lower Division	116	3.9	128	4.5	131	4.8	105	3.9	116	4.5
Upper Division	212	7.2	235	8.2	245	9.0	224	8.2	210	8.1
Art	52	1.8	52	1.8	50	1.8	42	1.5	49	1.9
Lower Division	17	0.6	16	0.6	20	0.7	16	0.6	18	0.7
Upper Division	35	1.2	36	1.3	30	1.1	26	1.0	31	1.2
English	77	2.6	86	3.0	99	3.6	76	2.8	77	3.0
Lower Division	24	0.8	31	1.1	31	1.1	22	0.8	11	0.4
Upper Division	53	1.8	55	1.9	68	2.5	54	2.0	66	2.6
Hawaiian Studies	81	2.7	102	3.6	117	4.3	110	4.0	103	4.0
Lower Division	36	1.2	47	1.6	58	2.1	40	1.5	51	2.0
Upper Division	45	1.5	55	1.9	59	2.2	70	2.6	52	2.0
Japanese Studies	30	1.0	29	1.0	27	1.0	25	0.9	22	0.9
Lower Division	6	0.2	11	0.4	8	0.3	4	0.1	7	0.3
Upper Division	24	0.8	18	0.6	19	0.7	21	0.8	15	0.6
Music	27	0.9	29	1.0	26	0.9	25	0.9	16	0.6
Lower Division	16	0.5	11	0.4	8	0.3	12	0.4	5	0.2
Upper Division	11	0.4	18	0.6	18	0.7	13	0.5	11	0.4
Philosophy	15	0.5	14	0.5	15	0.5	10	0.4	7	0.3
Lower Division	3	0.1	2	0.1	3	0.1	2	0.1	4	0.2
Upper Division	12	0.4	12	0.4	12	0.4	8	0.3	3	0.1
Speech	46	1.6	51	1.8	42	1.5	41	1.5	52	2.0
Lower Division	14	0.5	10	0.3	3	0.1	9	0.3	20	0.8
Upper Division	32	1.1	41	1.4	39	1.4	32	1.2	32	1.2

Table 7 (cont.)

MAJOR	FALL SEMESTER									
	1993		1994		1995		1996		1997	
	No.	V%	No.	V%	No.	V%	No.	V%	No.	V%
Natural Sciences	386	13.1	470	16.4	507	18.5	514	18.9	528	20.4
Lower Division	145	4.9	177	6.2	196	7.2	191	7.0	205	7.9
Upper Division	241	8.2	293	10.2	311	11.4	323	11.9	323	12.5
Biology	117	4.0	121	4.2	120	4.4	117	4.3	123	4.8
Lower Division	50	1.7	39	1.4	49	1.8	51	1.9	53	2.0
Upper Division	67	2.3	82	2.9	71	2.6	66	2.4	70	2.7
Chemistry	30	1.0	27	0.9	28	1.0	20	0.7	18	0.7
Lower Division	11	0.4	10	0.3	8	0.3	5	0.2	5	0.2
Upper Division	19	0.6	17	0.6	20	0.7	15	0.6	13	0.5
Computer Science	67	2.3	66	2.3	56	2.0	52	1.9	69	2.7
Lower Division	38	1.3	39	1.4	29	1.1	26	1.0	39	1.5
Upper Division	29	1.0	27	0.9	27	1.0	26	1.0	30	1.2
Geology	20	0.7	22	0.8	29	1.1	25	0.9	22	0.9
Lower Division	5	0.2	4	0.1	8	0.3	4	0.1	5	0.2
Upper Division	15	0.5	18	0.6	21	0.8	21	0.8	17	0.7
Marine Science	24	0.8	77	2.7	113	4.1	132	4.8	136	5.3
Lower Division	12	0.4	49	1.7	64	2.3	71	2.6	70	2.7
Upper Division	12	0.4	28	1.0	49	1.8	61	2.2	66	2.6
Mathematics	36	1.2	30	1.0	22	0.8	36	1.3	38	1.5
Lower Division	13	0.4	8	0.3	11	0.4	14	0.5	17	0.7
Upper Division	23	0.8	22	0.8	11	0.4	22	0.8	21	0.8
Natural Science	42	1.4	73	2.5	77	2.8	90	3.3	80	3.1
Lower Division	8	0.3	19	0.7	16	0.6	15	0.6	12	0.5
Upper Division	34	1.2	54	1.9	61	2.2	75	2.8	68	2.6
Nursing	36	1.2	39	1.4	42	1.5	31	1.1	33	1.3
Lower Division	1	<0.1								
Upper Division	35	1.2	39	1.4	42	1.5	31	1.1	33	1.3
Physics	14	0.5	15	0.5	20	0.7	11	0.4	9	0.3
Lower Division	7	0.2	9	0.3	11	0.4	5	0.2	4	0.2
Upper Division	7	0.2	6	0.2	9	0.3	6	0.2	5	0.2
Social Sciences	505	17.1	521	18.2	565	20.6	505	18.5	501	19.4
Lower Division	126	4.3	123	4.3	144	5.3	116	4.3	122	4.7
Upper Division	269	9.1	302	10.5	338	12.3	348	12.8	336	13.0
Graduate Division	110	3.7	96	3.3	83	3.0	41	1.5	43	1.7
Anthropology	38	1.3	44	1.5	46	1.7	48	1.8	52	2.0
Lower Division	8	0.3	11	0.4	11	0.4	5	0.2	9	0.3
Upper Division	30	1.0	33	1.1	35	1.3	43	1.6	43	1.7
Education Professional Cert	7	0.2	18	0.6	15	0.5	10	0.4	6	0.2
Graduate Division	7	0.2	18	0.6	15	0.5	10	0.4	6	0.2
Education Cert Elementary	72	2.4	51	1.8	37	1.4	15	0.6	11	0.4
Graduate Division	72	2.4	51	1.8	37	1.4	15	0.6	11	0.4
Education Cert Secondary	31	1.0	27	0.9	31	1.1	16	0.6	26	1.0
Graduate Division	31	1.0	27	0.9	31	1.1	16	0.6	26	1.0
Geography	40	1.4	40	1.4	35	1.3	29	1.1	24	0.9
Lower Division	7	0.2	6	0.2	4	0.1	3	0.1	4	0.2
Upper Division	33	1.1	34	1.2	31	1.1	26	1.0	20	0.8
History	29	1.0	33	1.1	35	1.3	28	1.0	32	1.2
Lower Division	6	0.2	7	0.2	8	0.3	5	0.2	5	0.2
Upper Division	23	0.8	26	0.9	27	1.0	23	0.8	27	1.0

Table 7 (cont.)

MAJOR	FALL SEMESTER									
	1993		1994		1995		1996		1997	
	No.	V%	No.	V%	No.	V%	No.	V%	No.	V%
Political Science	54	1.8	59	2.1	68	2.5	67	2.5	76	2.9
Lower Division	18	0.6	24	0.8	27	1.0	17	0.6	21	0.8
Upper Division	36	1.2	35	1.2	41	1.5	50	1.8	55	2.1
Psychology	166	5.6	161	5.6	198	7.2	180	6.6	180	7.0
Lower Division	62	2.1	56	2.0	72	2.6	69	2.5	66	2.6
Upper Division	104	3.5	105	3.7	126	4.6	111	4.1	114	4.4
Sociology	68	2.3	88	3.1	100	3.7	112	4.1	94	3.6
Lower Division	25	0.8	19	0.7	22	0.8	17	0.6	17	0.7
Upper Division	43	1.5	69	2.4	78	2.8	95	3.5	77	3.0
Interdisciplinary Majors	87	2.9	76	2.6	81	3.0	133	4.9	175	6.8
Lower Division	20	0.7	6	0.2	11	0.4	33	1.2	51	2.0
Upper Division	67	2.3	70	2.4	70	2.6	100	3.7	124	4.8
Liberal Studies	74	2.5	64	2.2	60	2.2	116	4.3	151	5.8
Lower Division	14	0.5	1	<0.1	4	0.1	31	1.1	46	1.8
Upper Division	60	2.0	63	2.2	56	2.0	85	3.1	105	4.1
Linguistics	13	0.4	12	0.4	21	0.8	17	0.6	24	0.9
Lower Division	6	0.2	5	0.2	7	0.3	2	0.1	5	0.2
Upper Division	7	0.2	7	0.2	14	0.5	15	0.6	19	0.7
General / Pre-Professional	588	19.9	539	18.8	538	19.7	458	16.8	358	13.8
Lower Division	486	16.5	439	15.3	438	16.0	406	14.9	296	11.4
Upper Division	102	3.5	100	3.5	100	3.7	52	1.9	62	2.4
General	492	16.7	441	15.4	456	16.7	377	13.8	269	10.4
Lower Division	414	14.0	381	13.3	378	13.8	346	12.7	243	9.4
Upper Division	78	2.6	60	2.1	78	2.8	31	1.1	26	1.0
Pre-Engineering	13	0.4	9	0.3	3	0.1	4	0.1	1	<0.1
Lower Division	11	0.4	6	0.2	3	0.1	4	0.1	1	<0.1
Upper Division	2	0.1	3	0.1						
Pre-Nursing	83	2.8	89	3.1	79	2.9	77	2.8	88	3.4
Lower Division	61	2.1	52	1.8	57	2.1	56	2.1	52	2.0
Upper Division	22	0.7	37	1.3	22	0.8	21	0.8	36	1.4
Unclassified	555	18.8	361	12.6	166	6.1	274	10.1	208	8.0
Undergraduates	376	12.7	209	7.3	70	2.6	100	3.7	74	2.9
Graduates	179	6.1	152	5.3	96	3.5	174	6.4	134	5.2
No Data	1	<0.1								

1/ Includes Unclassified Undergraduates and No Data.

2/ Includes Unclassified Graduates.

TABLE 8
DISTRIBUTION OF MAJORS, BY ETHNICITY AND GENDER
UNIVERSITY OF HAWAI'I AT HILO
FALL 1997

	TOTAL	** ASIAN/PACIFIC ISLANDER **									** HISPANIC **				* CAUCASIAN *			Afri - Amer		
		Sub Total	Jpn	Chn	Kor	Fili-pino	Pac Hawn	Other Isle	Mixed Asn	A / PI	Sub Total	Puer Ricn	Other Hisp	Mixed Hisp	Sub Total	Other Cauc	Portu-guese	can Amer	Ind / Alsk	Mixed
TOTAL.....	2,587	1,413	427	47	21	194	519	128	12	65	44	13	14	17	759	714	45	21	15	335
Men	1,036	540	172	13	13	58	175	72	6	31	18	3	6	9	320	308	12	17	8	133
Women	1,551	873	255	34	8	136	344	56	6	34	26	10	8	8	439	406	33	4	7	202
College of Agriculture	135	60	15	3		3	32	3		4	2	1		1	46	44	2	1		26
Men	76	36	11	2		1	16	2		4	1	1			25	25				14
Women	59	24	4	1		2	16	1			1			1	21	19	2	1		12
College of Arts & Sciences	2,244	1,235	345	35	21	181	459	123	12	59	39	12	13	14	649	608	41	19	15	287
Men	898	476	147	9	13	55	150	70	6	26	15	2	6	7	272	260	12	16	8	111
Women	1,346	759	198	26	8	126	309	53	6	33	24	10	7	7	377	348	29	3	7	176
Business & Economics	356	236	59	10	3	51	61	37	1	14	4	1	2	1	77	72	5	2	2	35
Men	162	105	30	5	2	14	27	19	1	7	3	1	1	1	39	39		2	1	12
Women	194	131	29	5	1	37	34	18		7	1		1		38	33	5		1	23
Business Administration	336	222	59	8	2	51	58	29	1	14	4	1	2	1	73	68	5	1	2	34
Men	147	95	30	3	1	14	25	14	1	7	3	1	1	1	36	36		1	1	11
Women	189	127	29	5	1	37	33	15		7	1		1		37	32	5		1	23
Economics	20	14		2	1		3	8							4	4		1		1
Men	15	10		2	1		2	5							3	3		1		1
Women	5	4					1	3							1	1				
Humanities	326	206	38	5	3	22	121	8		9	3	1	1	1	81	77	4	5	2	29
Men	112	61	14		1	8	29	5		4	2	1	1		29	26	3	5	2	13
Women	214	145	24	5	2	14	92	3		5	1			1	52	51	1			16
Art	49	25	10	2	1	3	5	1		3					19	19		1		4
Men	22	10	5		1	1	1			2					8	8		1		3
Women	27	15	5	2		2	4	1		1					11	11				1
English	77	33	7	1		4	16	3		2	2		1	1	31	29	2			11
Men	19	8	3			1	3	1			1		1		7	6	1			3
Women	58	25	4	1		3	13	2		2	1			1	24	23	1			8
Hawaiian Studies	103	95	5			4	85	1							5	5				3
Men	26	23				1	21	1							2	2				1
Women	77	72	5			3	64								3	3				2

Table 8 (cont.)

	TOTAL	** ASIAN/PACIFIC ISLANDER **							** HISPANIC **				* CAUCASIAN *			Afri - Amer						
		Sub Total	Jpn	Chn	Kor	Fili-pino	Hawn	Pac Isle	Other Asn	Mixed A/PI	Sub Total	Puer Ricn	Other Hisp	Mixed Hisp	Sub Total	Other Cauc	Portu-guese	can Amer	Ind / Alsk	Mixed		
Japanese Studies	22	17	9		2	1	3							3	3					2		
Men	9	6	4			1	1							2	2					1		
Women	13	11	5		2		2							1	1					1		
Music	16	7		1		2	3	1						6	6				1	2		
Men	8	3					2	1						2	2				1	2		
Women	8	4		1		2	1							4	4							
Philosophy	7	3	1				1							2	2				1	1		
Men	4	2	1											1	1				1			
Women	3	1					1							1	1					1		
Speech	52	26	6	1		8	8	2		1	1			15	13	2			4	6		
Men	24	9	1			4	1	2		1	1			7	5	2			4	3		
Women	28	17	5	1		4	7							8	8					3		
Natural Sciences	528	238	74	7	8	31	74	27	4	13	8	4	1	3	202	197	5		5	4	71	
Men	257	117	40	1	7	11	28	19	3	8	1			1	99	96	3		4	2	34	
Women	271	121	34	6	1	20	46	8	1	5	7	4	1	2	103	101	2		1	2	37	
Biology	123	61	20	2		8	19	8	1	3	1	1			42	41	1		1		18	
Men	45	21	10			3	4	3		1					16	15	1		1		7	
Women	78	40	10	2		5	15	5	1	2	1	1			26	26					11	
Chemistry	18	4	2			1	1				2			2	8	8			1		3	
Men	10										1			1	6	6			1		2	
Women	8	4	2			1	1				1			1	2	2					1	
Computer Science	69	41	12	1	2	5	10	5	1	5	2	1	1		21	18	3				5	
Men	50	32	9		2	3	7	5	1	5					14	12	2				4	
Women	19	9	3	1		2	3				2	1	1		7	6	1				1	
Geology	22	3				1	1	1							15	15					1	3
Men	9	1						1							6	6				1	1	
Women	13	2				1	1								9	9					2	
Marine Science	136	48	16	1	3		19	6	1	2	1	1			64	64			3	2	18	
Men	73	29	10	1	3		8	5	1	1					31	31			2	1	10	
Women	63	19	6				11	1		1	1	1			33	33			1	1	8	
Mathematics	38	28	9	1	1	5	9	1		2					5	5					5	
Men	19	13	5		1	2	3	1		1					3	3					3	
Women	19	15	4	1		3	6			1					2	2					2	

Table 8 (cont.)

	TOTAL	** ASIAN/PACIFIC ISLANDER **									** HISPANIC **				* CAUCASIAN *			Afri - Amer can Ind / Amer Alsk Mixed		
		Sub Total	Jpn	Chn	Kor	Fili- pino	Pac Hawn	Other Isle	Mixed Asn	Mixed A / PI	Sub Total	Puer Riczn	Other Hisp	Mixed Hisp	Sub Total	Other Cauc	Portu- guese	Afri - Amer	Ind / Alsk	Mixed
Natural Science	80	33	7	1	2	6	11	4	1	1	2	1	1	33	33				12	
Men	42	18	4		1	2	6	4	1					18	18				6	
Women	38	15	3	1	1	4	5			1	2	1	1	15	15				6	
Nursing	33	18	7			5	4	2						7	6	1		1	7	
Men	5	3	2			1								1	1				1	
Women	28	15	5			4	4	2						6	5	1		1	6	
Physics	9	2	1	1										7	7					
Men	4													4	4					
Women	5	2	1	1										3	3					
Social Sciences	501	247	76	3	2	29	91	35	2	9	16	3	5	8	154	141	13	5	2	77
Men	167	78	21		1	8	24	21	1	2	7		3	4	55	52	3	4		23
Women	334	169	55	3	1	21	67	14	1	7	9	3	2	4	99	89	10	1	2	54
Anthropology	52	17	6	1		1	5	2	1	1	2		1	1	19	19		2	1	11
Men	17	4	3				1				1			1	7	7		1		4
Women	35	13	3	1		1	4	2	1	1	1		1	12	12		1	1	7	
Education Professional Cert	6	2	2											4	4					
Men	2	1	1											1	1					
Women	4	1	1											3	3					
Education Cert Elementary	11	5	4				1				1			1	2	1	1			3
Men	1	1	1																	
Women	10	4	3				1				1			2	1	1				3
Education Cert Secondary.....	26	8	3	1		2	1			1				13	12	1				5
Men	8	3	1			1				1				5	5					
Women	18	5	2	1		1	1							8	7	1				5
Geography	24	9	4			1	2	2			1			13	13					1
Men	13	4	1			1	1	1			1			7	7					1
Women	11	5	3				1	1						6	6					
History	32	18	8			1	7	1		1	1			10	9	1				3
Men	15	9	6			1	2			1				4	4					1
Women	17	9	2				5	1		1				6	5	1				2
Political Science	76	40	6		1	3	9	19	1	1	3		2	1	16	14	2	2		15
Men	49	27	3		1	1	4	16	1	1	1		1	1	10	10		2		9
Women	27	13	3			2	5	3			2		1	1	6	4	2			6

Table 8 (cont.)

	TOTAL	** ASIAN/PACIFIC ISLANDER **								** HISPANIC **				* CAUCASIAN *			Afri - Amer			
		Sub Total	Jpn	Chn	Kor	Fili-pino	Pac Hawn	Other Isle	Mixed Asn A / PI	Sub Total	Puer Ricn	Other Hisp	Mixed Hisp	Sub Total	Other Cauc	Portu-guese	can Amer	Ind / Alsk	Mixed	
Psychology	180	95	31	1		17	38	5		3	6	2	2	2	49	43	6	1	1	28
Men	37	16	2			4	8	2			3		2	1	12	9	3	1		5
Women	143	79	29	1		13	30	3		3	3	2		1	37	34	3		1	23
Sociology	94	53	12		1	4	28	6		2	2	1		1	28	26	2			11
Men	25	13	3				8	2							9	9				3
Women	69	40	9		1	4	20	4		2	2	1		1	19	17	2			8
Interdisciplinary Majors	175	94	28	4	3	13	36	4	2	4	4	1	2	1	49	39	10	1	2	25
Men	44	24	7	1	2	2	9	1		2	1			1	10	9	1		1	8
Women	131	70	21	3	1	11	27	3	2	2	3	1	2		39	30	9	1	1	17
Liberal Studies	151	77	18	3	1	12	36	4		3	4	1	2	1	47	38	9		1	22
Men	35	19	4		1	2	9	1		2	1			1	10	9	1			5
Women	116	58	14	3		10	27	3		1	3	1	2		37	29	8		1	17
Linguistics	24	17	10	1	2	1			2	1					2	1	1	1	1	3
Men	9	5	3	1	1													1	1	3
Women	15	12	7		1	1			2	1					2	1	1	1		
General / Pre-Professional	358	214	70	6	2	35	76	12	3	10	4	2	2		86	82	4	1	3	50
Men	156	91	35	2		12	33	5	1	3	1		1		40	38	2	1	2	21
Women	202	123	35	4	2	23	43	7	2	7	3	2	1		46	44	2		1	29
General	269	153	56	4	2	15	53	11	3	9	3	1	2		69	66	3	1	3	40
Men	137	80	35	2		5	29	5	1	3	1		1		37	35	2	1	2	16
Women	132	73	21	2	2	10	24	6	2	6	2	1	1		32	31	1		1	24
Pre-Engineering	1														1	1				
Men	1														1	1				
Pre-Nursing	88	61	14	2		20	23	1		1	1	1			16	15	1			10
Men	18	11				7	4								2	2				5
Women	70	50	14	2		13	19	1		1	1	1			14	13	1			5
Unclassified	208	118	67	9		10	28	2		2	3		1	2	64	62	2	1		22
Men	62	28	14	2		2	9			1	2			2	23	23		1		8
Women	146	90	53	7		8	19	2		1	1		1		41	39	2			14

APPENDIX A
 SELECTED CHARACTERISTICS OF REGULAR STUDENTS
 UNIVERSITY OF HAWAI'I CENTER AT WEST HAWAI'I 1/
 FALL 1997

CHARACTERISTIC	TOTAL No. V%		UH HILO				HAWAI'I CC							
			SUBTOTAL No. V%		Classified No. V%		Unclassified No. V%		SUBTOTAL No. V%		Classified No. V%		Unclassified No. V%	
TOTAL 2/	347	100.0	56	100.0	46	100.0	10	100.0	291	100.0	283	100.0	8	100.0
H%		100.0		16.1		13.3		2.9		83.9		81.6		2.3
EDUCATIONAL LEVEL:														
Classified	329	94.8	46	82.1	46	100.0			283	97.3	283	100.0		
Undergraduate	329	94.8	46	82.1	46	100.0			283	97.3	283	100.0		
Freshmen	200	57.6							200	68.7	200	70.7		
Sophomores	85	24.5	2	3.6	2	4.3			83	28.5	83	29.3		
Juniors	18	5.2	18	32.1	18	39.1								
Seniors	26	7.5	26	46.4	26	56.5								
Unclassified	18	5.2	10	17.9			10	100.0	8	2.7			8	100.0
Undergraduate	16	4.6	8	14.3			8	80.0	8	2.7			8	100.0
Graduate	2	0.6	2	3.6			2	20.0						
MAJOR:														
UH Hilo	56	16.1	56	100.0	46	100.0	10	100.0						
College of Arts & Sciences	46	13.3	46	82.1	46	100.0								
Business & Economics	16	4.6	16	28.6	16	34.8								
Humanities	7	2.0	7	12.5	7	15.2								
Natural Sciences	2	0.6	2	3.6	2	4.3								
Social Sciences	20	5.8	20	35.7	20	43.5								
Interdisciplinary Majors	1	0.3	1	1.8	1	2.2								
Unclassified	10	2.9	10	17.9			10	100.0						
Undergraduate	8	2.3	8	14.3			8	80.0						
Graduate	2	0.6	2	3.6			2	20.0						
Hawai'i Community College	291	83.9							291	100.0	283	100.0	8	100.0
Liberal Arts	194	55.9							194	66.7	194	68.6		
Vocational Ed	89	25.6							89	30.6	89	31.4		
Business Technology	5	1.4							5	1.7	5	1.8		
Food Services	38	11.0							38	13.1	38	13.4		
Health Services	21	6.1							21	7.2	21	7.4		
Public Services	23	6.6							23	7.9	23	8.1		
Technology Program	2	0.6							2	0.7	2	0.7		
Unclassified (Undergrad)	8	2.3							8	2.7			8	100.0
GENDER:														
Men	111	32.0	21	37.5	17	37.0	4	40.0	90	30.9	86	30.4	4	50.0
Women	236	68.0	35	62.5	29	63.0	6	60.0	201	69.1	197	69.6	4	50.0
PERMANENT HOME ADDRESS:														
Hawai'i	345	99.4	55	98.2	45	97.8	10	100.0	290	99.7	282	99.6	8	100.0
O'ahu	3	0.9							3	1.0	3	1.1		
Honolulu	1	0.3							1	0.3	1	0.4		

Appendix A (cont.)

CHARACTERISTIC	TOTAL		UH HILO				HAWAI'I CC							
			SUBTOTAL		Classified		Unclassified		SUBTOTAL		Classified		Unclassified	
	No.	V%	No.	V%	No.	V%	No.	V%	No.	V%	No.	V%	No.	V%
Leeward	2	0.6							2	0.7	2	0.7		
Hawai'i	341	98.3	55	98.2	45	97.8	10	100.0	286	98.3	278	98.2	8	100.0
Kaua'i	1	0.3							1	0.3	1	0.4		
Other than Hawai'i	2	0.6	1	1.8	1	2.2			1	0.3	1	0.4		
U.S. Mainland	2	0.6	1	1.8	1	2.2			1	0.3	1	0.4		
TUITION STATUS:														
Residents	338	97.4	56	100.0	46	100.0	10	100.0	282	96.9	275	97.2	7	87.5
Resident	335	96.5	54	96.4	44	95.7	10	100.0	281	96.6	274	96.8	7	87.5
Resident Converted	3	0.9	2	3.6	2	4.3			1	0.3	1	0.4		
Non-Residents	9	2.6							9	3.1	8	2.8	1	12.5
Not Exempted	4	1.2							4	1.4	4	1.4		
Exempted	5	1.4							5	1.7	4	1.4	1	12.5
Faculty / Staff	1	0.3							1	0.3			1	12.5
Institutional	2	0.6							2	0.7	2	0.7		
Ethnic Hawaiian	2	0.6							2	0.7	2	0.7		
AGE:														
Mean Age (in years)		28.9		38.3		39.1		34.9		27.1		26.5		45.2
Under 18	14	4.0							14	4.8	14	4.9		
18-19	75	21.6							75	25.8	74	26.1	1	12.5
20-21	56	16.1	4	7.1	2	4.3	2	20.0	52	17.9	52	18.4		
22-24	27	7.8	3	5.4	2	4.3	1	10.0	24	8.2	24	8.5		
25-29	45	13.0	5	8.9	4	8.7	1	10.0	40	13.7	40	14.1		
30-34	23	6.6	7	12.5	6	13.0	1	10.0	16	5.5	15	5.3	1	12.5
35-59	102	29.4	37	66.1	32	69.6	5	50.0	65	22.3	61	21.6	4	50.0
60 and over	3	0.9							3	1.0	1	0.4	2	25.0
No Data	2	0.6							2	0.7	2	0.7		
CITIZENSHIP														
United States	337	97.1	54	96.4	44	95.7	10	100.0	283	97.3	275	97.2	8	100.0
Foreign	10	2.9	2	3.6	2	4.3			8	2.7	8	2.8		
ATTENDANCE STATUS:														
Full-Time	136	39.2	16	28.6	15	32.6	1	10.0	120	41.2	120	42.4		
Part-Time	211	60.8	40	71.4	31	67.4	9	90.0	171	58.8	163	57.6	8	100.0
TOTAL STUDENT SEM HRS TAKEN														
Full-Time	3,117		436		381		55		2,681		2,652		29	
Full-Time	1,868		221		208		13		1,647		1,647			
Part-Time	1,249		215		173		42		1,034		1,005		29	
AVERAGE SEM HOURS TAKEN														
Full-Time Students		9.0		7.8		8.3		5.5		9.2		9.4		3.6
Full-Time Students		13.7		13.8		13.9		13.0		13.7		13.7		
Part-Time Students		5.9		5.4		5.6		4.7		6.0		6.2		3.6
FTE STUDENT ENROLLMENT														
	208		29		25		4		179		177		2	

Appendix A (cont.)

CHARACTERISTIC	TOTAL		UH HILO						HAWAI'I CC					
			SUBTOTAL		Classified		Unclassified		SUBTOTAL		Classified		Unclassified	
	No.	V%	No.	V%	No.	V%	No.	V%	No.	V%	No.	V%	No.	V%
LOCAL ADDRESS:														
South Hilo	1	0.3							1	0.3	1	0.4		
Hamakua	3	0.9							3	1.0	3	1.1		
North Kohala	6	1.7	1	1.8	1	2.2			5	1.7	5	1.8		
South Kohala	75	21.6	18	32.1	15	32.6	3	30.0	57	19.6	54	19.1	3	37.5
North Kona	180	51.9	24	42.9	20	43.5	4	40.0	156	53.6	152	53.7	4	50.0
South Kona	53	15.3	11	19.6	9	19.6	2	20.0	42	14.4	41	14.5	1	12.5
Ka'u	10	2.9	1	1.8	1	2.2			9	3.1	9	3.2		
Puna	3	0.9	1	1.8			1	10.0	2	0.7	2	0.7		
Neighbor Islands	13	3.7							13	4.5	13	4.6		
No Data	3	0.9							3	1.0	3	1.1		
REGISTRATION STATUS:														
Continuing	177	51.0	38	67.9	35	76.1	3	30.0	139	47.8	138	48.8	1	12.5
Returning	32	9.2	6	10.7	3	6.5	3	30.0	26	8.9	26	9.2		
First-Time	94	27.1							94	32.3	88	31.1	6	75.0
Transfer	44	12.7	12	21.4	8	17.4	4	40.0	32	11.0	31	11.0	1	12.5
ETHNICITY:														
Asian / Pacific Islander	129	37.2	15	26.8	14	30.4	1	10.0	114	39.2	114	40.3		
Japanese	14	4.0	1	1.8	1	2.2			13	4.5	13	4.6		
Chinese	2	0.6							2	0.7	2	0.7		
Korean	2	0.6							2	0.7	2	0.7		
Filipino	22	6.3	5	8.9	5	10.9			17	5.8	17	6.0		
Hawaiian / Part-Hawaiian	77	22.2	8	14.3	7	15.2	1	10.0	69	23.7	69	24.4		
Pacific Islander	3	0.9	1	1.8	1	2.2			2	0.7	2	0.7		
Other Asian	2	0.6							2	0.7	2	0.7		
Mixed Asian / Pacific Islander	7	2.0							7	2.4	7	2.5		
Hispanic	6	1.7							6	2.1	5	1.8	1	12.5
Puerto Rican	4	1.2							4	1.4	3	1.1	1	12.5
Other Hispanic	2	0.6							2	0.7	2	0.7		
Caucasian	139	40.1	38	67.9	30	65.2	8	80.0	101	34.7	94	33.2	7	87.5
Portuguese	3	0.9							3	1.0	3	1.1		
Other Caucasian	136	39.2	38	67.9	30	65.2	8	80.0	98	33.7	91	32.2	7	87.5
African American	4	1.2							4	1.4	4	1.4		
Mixed Ethnic Background	45	13.0	3	5.4	2	4.3	1	10.0	42	14.4	42	14.8		
No Response	24	6.9							24	8.2	24	8.5		

1/ Students enrolled in UH Hilo courses conducted at West Hawai'i are counted in the enrollment figures for the University of Hawai'i at Hilo, while students enrolled in Hawai'i CC courses conducted at West Hawai'i are counted in the enrollment figures for Hawai'i Community College.

2/ The apparent decline of UH Hilo enrollment at the West-Hawai'i and some of the corresponding enrollment growth for Hawai'i CC may reflect changes in student classification rather than an absolute decline in UH Hilo's enrollment.

Note: Special Student Enrollment for Fall 1997 was as follows: Hilo: 1 undergraduate concurrent; Hawai'i CC: 1 concurrent and 1 early admit.

APPENDIX B
 ENROLLMENT BY PROGRAM
 UNIVERSITY OF HAWAI'I CENTER AT WEST HAWAI'I
 FALL 1992 TO FALL 1997

CAMPUS AND PROGRAM	1992	1993	1994	1995	1996	1997
TOTAL 1/	574	595	517	465	428	347
Percentage Change	5.9	3.7	-13.1	-10.1	-8.0	-18.9
MAJOR:						
UH Hilo	267	298	108	85	83	56
College of Agriculture	2	1				
College of Arts & Sciences	92	113	60	76	63	46
Business & Economics	20	22	23	28	25	16
Humanities	8	6	6	14	8	7
Natural Sciences	3	4	2	1	1	2
Social Sciences	20	36	15	21	27	20
Interdisciplinary Majors	9	12	7	6	2	1
General & Pre-Professional	32	33	7	6		
Unclassified	168	184	48	9	20	10
Undergraduate	158	162	41	6	13	8
Graduate	10	22	7	3	7	2
No Data	5					
Hawai'i Community College	307	297	409	380	345	291
Liberal Arts	77	126	242	253	252	194
Vocational Ed	86	128	150	121	87	89
Business Technology	15	14	12	9	8	5
Food Services	26	31	36	41	33	38
Health Services	32	67	37	30	19	21
Public Services	13	14	62	36	26	23
Technology Program		2	3	5	1	2
Unclassified (Undergrad)	143	43	17	6	6	8
No Data	1					

1/ The apparent decline of UH Hilo enrollment at West-Hawai'i and some of the corresponding enrollment growth for Hawai'i CC may reflect changes in student classification rather than an absolute decline in UH Hilo's enrollment.