

HEADCOUNT ENROLLMENT, BY MAJOR
UNIVERSITY OF HAWAI'I AT MANOA
FALL 1993 TO FALL 2003

Institutional Research Office

University of Hawai'i

April 2004

File Reference: Management and Planning Support Folder, Enrollment

Reports available online at: <http://www.hawaii.edu/iro/maps.htm>

THE UNIVERSITY OF HAWAI'I AT MĀNOA HEADCOUNT ENROLLMENT BY MAJOR, FALL 2003

This report summarizes headcount enrollment by major at UH Mānoa from Fall 1993 to Fall 2003. Table 1 presents data for each School / College, with breakout by lower, upper and graduate divisions (lower division is the sum of freshmen and sophomores, while upper division is the sum of juniors and seniors). Table 2 shows headcounts by major, with detail by degree objective. Table 3 provides summary counts by degree objective.

Changes to degree programs occur frequently. Details on changes to the programs are itemized in the footnotes to Table 2. Every attempt is made to keep these footnotes comprehensive and up-to-date. Sources for documenting changes include Minutes for the Meetings of the UH Board of Regents and internal memoranda on program changes issued by the schools / colleges and the UH Mānoa executive offices.

Programs for which enrollment first appears in Fall 2003 include the following:

- The BS degree program in Marine Biology (College of Natural Sciences), approved by the UH Board of Regents in July 2002, effective Fall 2002.
- The Graduate Certificate program in Conflict Resolution, approved by the UH Mānoa Chancellor in May 2002. This program is administered by the Spark M. Matsunaga Institute for Peace in the College of Social Sciences.
- The MEd program in Early Childhood Education (College of Education), approved by the UH Board of Regents in March 2002, effective Fall 2002.
- The Master in Law for Foreign Professionals degree (School of Law), approved by the UH Board of Regents in October 2002, effective Fall 2003.

Other changes for Fall 2003 include the following:

- The Graduate Certificate in Asian Studies (SHAPS) has been terminated.
- The stopout on the PhD program in International Management (CBA) was removed, effective Fall 2003.
- The Kinesiology and Leisure Science (Education) BS specialization in Athletic Training was placed on stopout for the 2003-05 academic years in December 2003.
- The name of the program in Plant Pathology (CTAHR) was changed to "Tropical Plant Pathology," effective Spring 2003.
- In Fall 2003, UH Mānoa migrated to a new student registration system. One result was a large increase in the number of enrollment records with unusable data for education level and education objective. The reader is advised to exercise caution when examining trends or using percentage data.

Enrollment Highlights for Fall 2003 include the following:

- Enrollment for the UH Mānoa campus increased 6.2% in Fall 2003, the second consecutive year of robust growth in fall semester headcount enrollment (Table 1 & Figure 1). In Fall 2003, total enrollment reached the highest level since Fall 1994.
- Enrollment in BA programs has grown rapidly since Fall 2000, and stands at the highest level since Fall 1994 (Table 3 & Figure 4). BA programs which have shown the largest increases include: Art in Arts & Humanities, Psychology in Social Sciences and the Pre-Professional Education programs in Business, Education and Nursing in General Arts & Sciences.
- Enrollment in BS programs in Fall 2003 increased for the fifth consecutive fall semester and stands at the highest level on record (Table 3 & Figure 4). BS programs which have shown the largest enrollment increases include: Biology and Computer Science in Natural Sciences, Global Environmental Science in SOEST, Electrical and Mechanical Engineering and Nursing (Table 2).
- After reaching a low in Fall 2001, enrollment in BBA programs has increased each of the last two fall semesters and reached 891 in Fall 2003, the highest level since Fall 1995 (Table 3 & Figure 5). Other Baccalaureate programs have declined steadily since Fall 1994 (Figure 5), much of which is due to the replacement of the BArch degree with the ArchD in the School of Architecture.
- Enrollment in Masters degree programs increased for the second consecutive fall semester in Fall 2003 to reach 3,068, the highest level since Fall 1994 (Table 3 & Figure 6). The MAcc degree program in Accounting has grown substantially since Fall 1998, while the MLISC program in Library Science has rebounded since the program was moved to the College of Natural Sciences in Fall 1997.
- Enrollment in Doctorate programs increased for the third consecutive fall semester in Fall 1993 to reach 1,312, the highest level since Fall 1995. Programs which have shown the largest increases since Fall 1998 include Botany (Natural Sciences), Communication and Information Science (Other Arts and Sciences), Education, Cell & Molecular Biology (CTAHR) and Nursing (Table 2).
- First-Professional enrollment has increased steadily since 1997 (Table 3 & Figure 7). Since Fall 198, the MD program in Medicine has increased by 34 students (15%), while the JD program in Law has increased by 63 students (27%). The addition of the ArchD program in Architecture has added another 58 students to the First-Professional total over this period.
- General Arts & Sciences enrolled 4,450 students in Fall 2003, by far the largest enrollment of any college / school (Table 1 & Figure 9). Social Sciences was next at 2,362, followed by Natural Sciences, Arts & Humanities, Business and Education. Natural Sciences has shown the most robust growth since Fall 1993, while Library Science, Nursing and SOEST lead the way since Fall 1998 (Figure 10).

University of Hawai'i at Mānoa
Credit Students

Figure 1
Headcount Enrollment by Ed Level

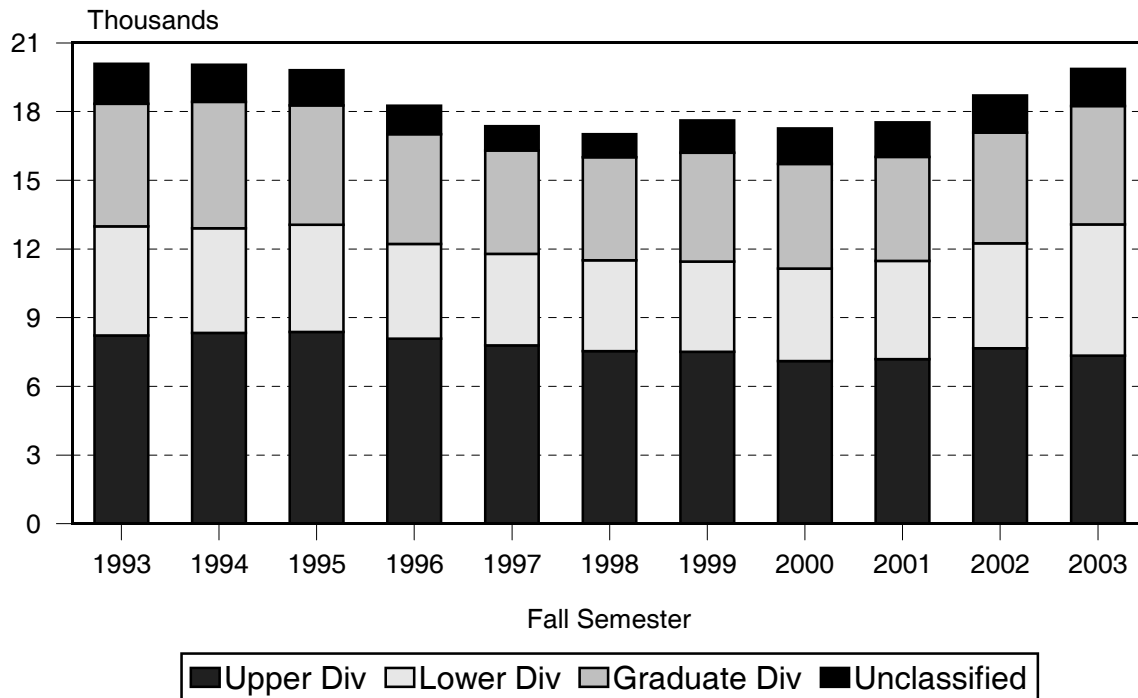
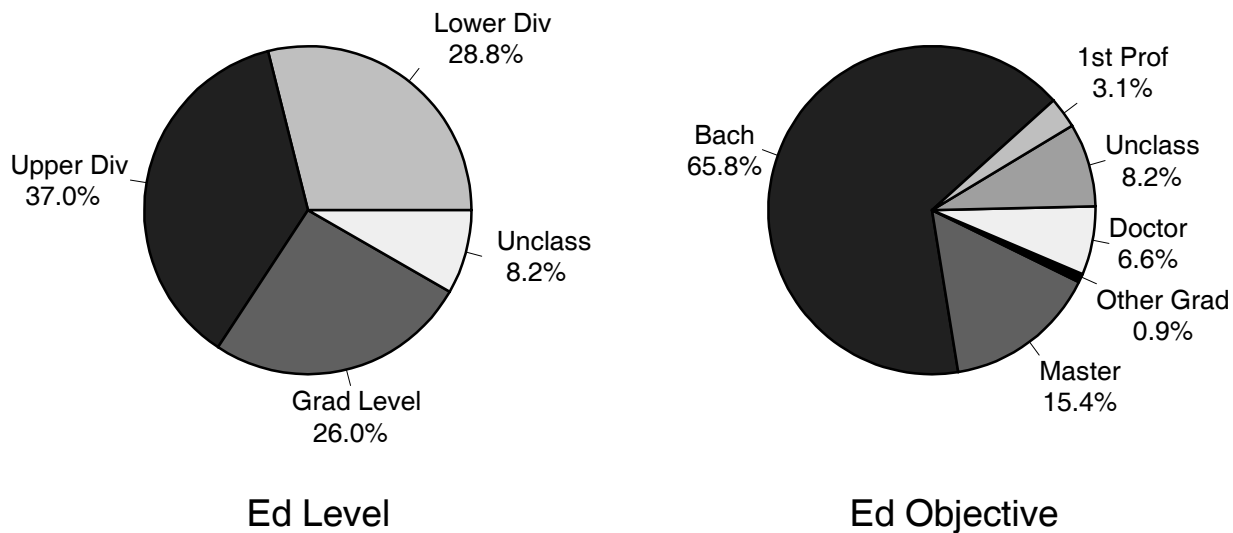


Figure 2
Percentage Enrollment by Education Level and Objective
Fall 2003



University of Hawai'i at Mānoa
Credit Students

Figure 3
Headcount Enrollment by Degree Objective
Fall 2003

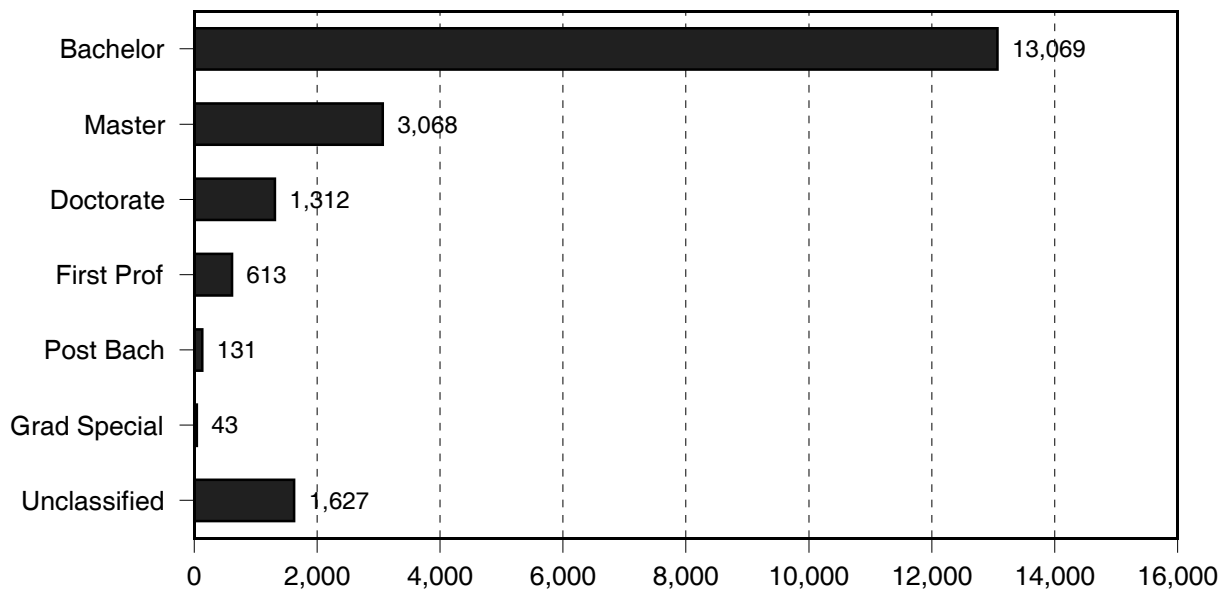
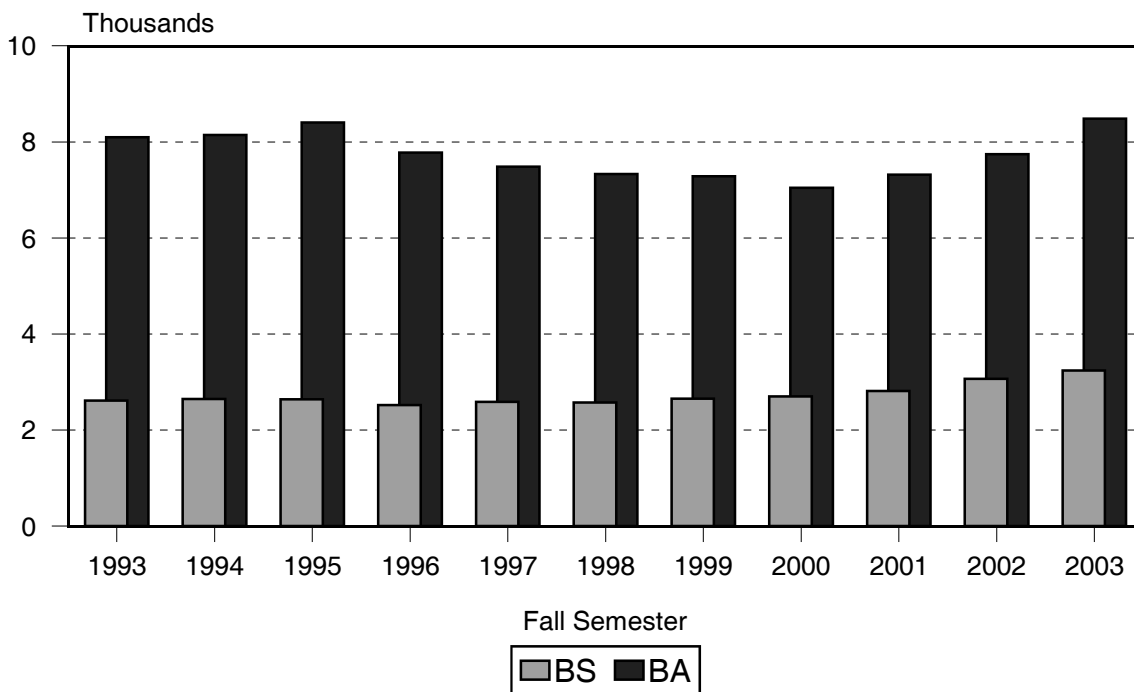


Figure 4
Headcount Enrollment by Degree Objective



University of Hawai'i at Mānoa
Credit Students

Figure 5
Headcount Enrollment by Degree Objective

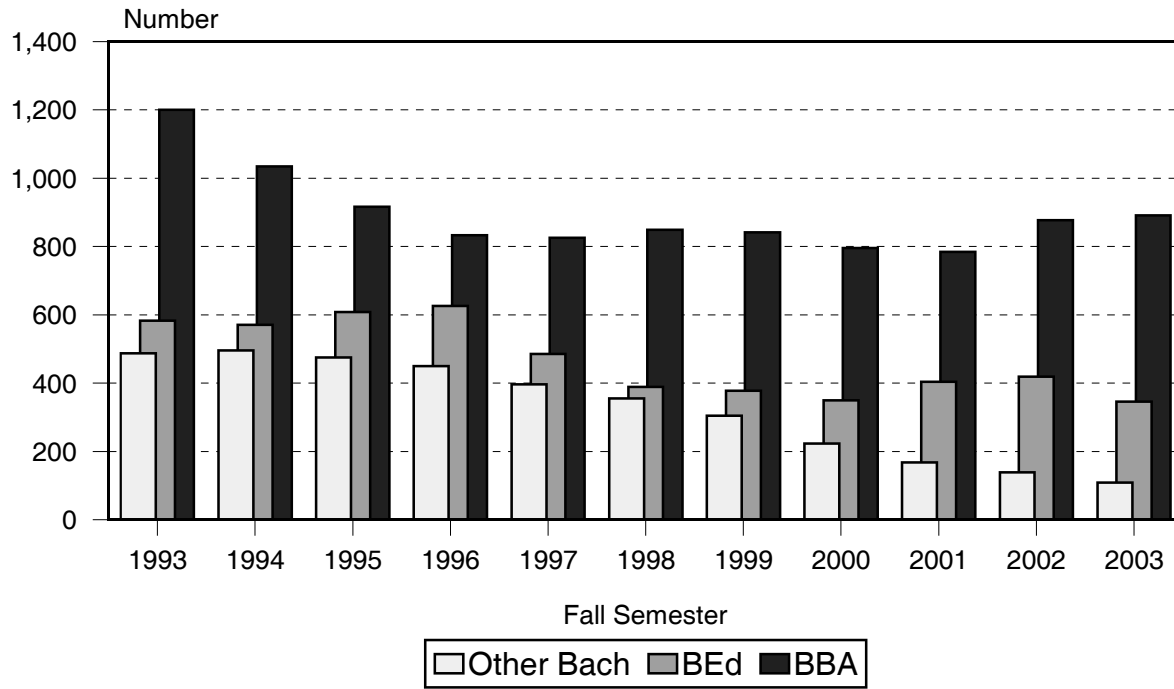
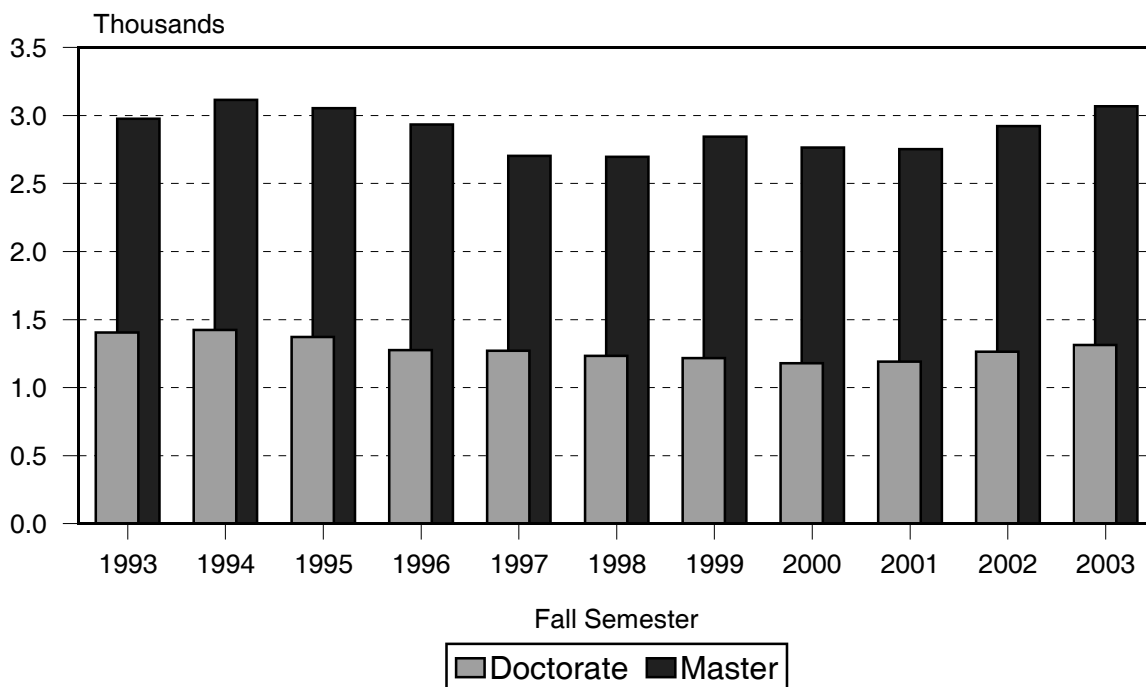
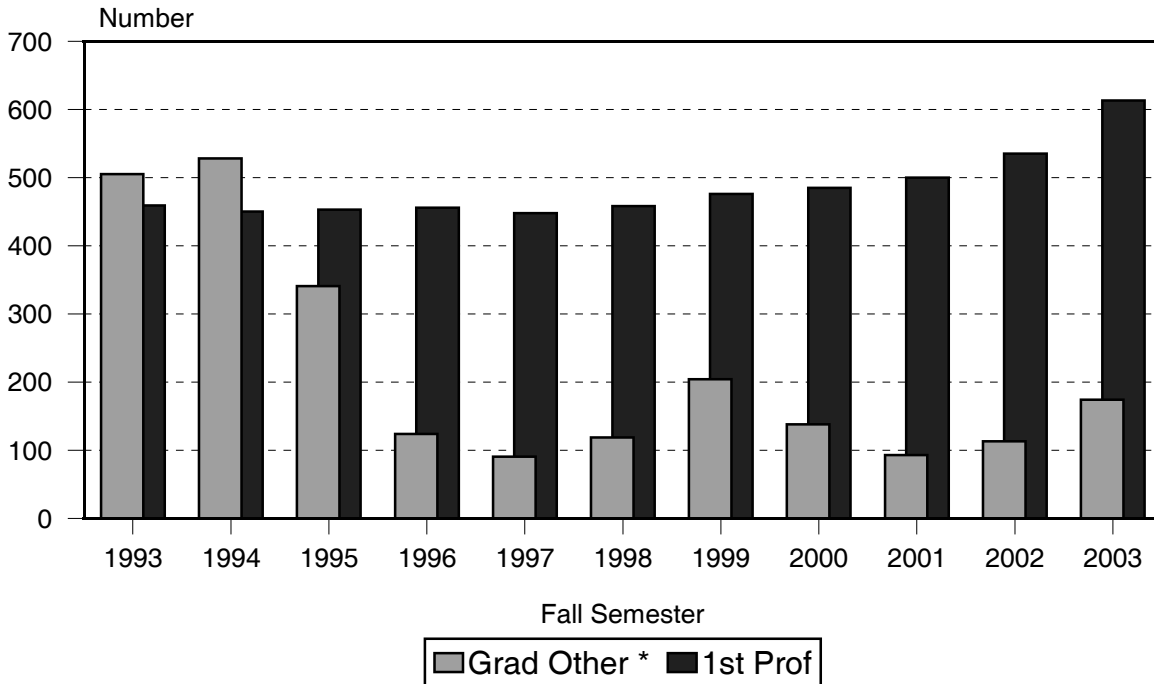


Figure 6
Headcount Enrollment by Degree Objective



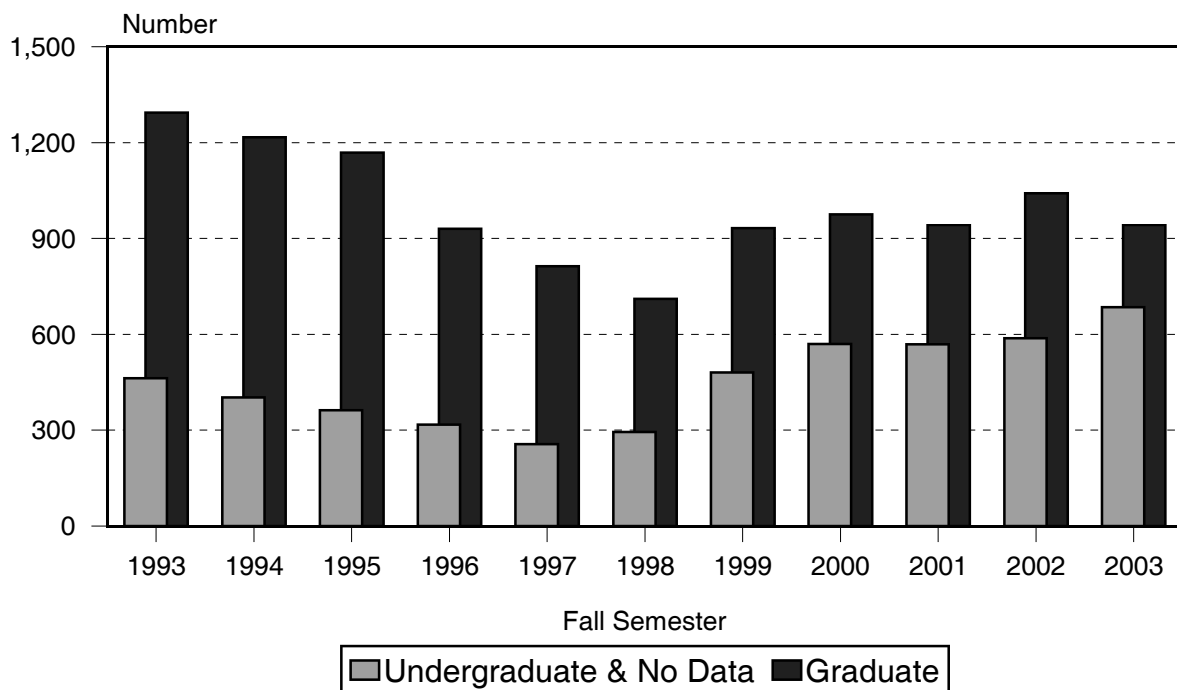
University of Hawai'i at Mānoa
Credit Students

Figure 7
Headcount Enrollment by Degree Objective



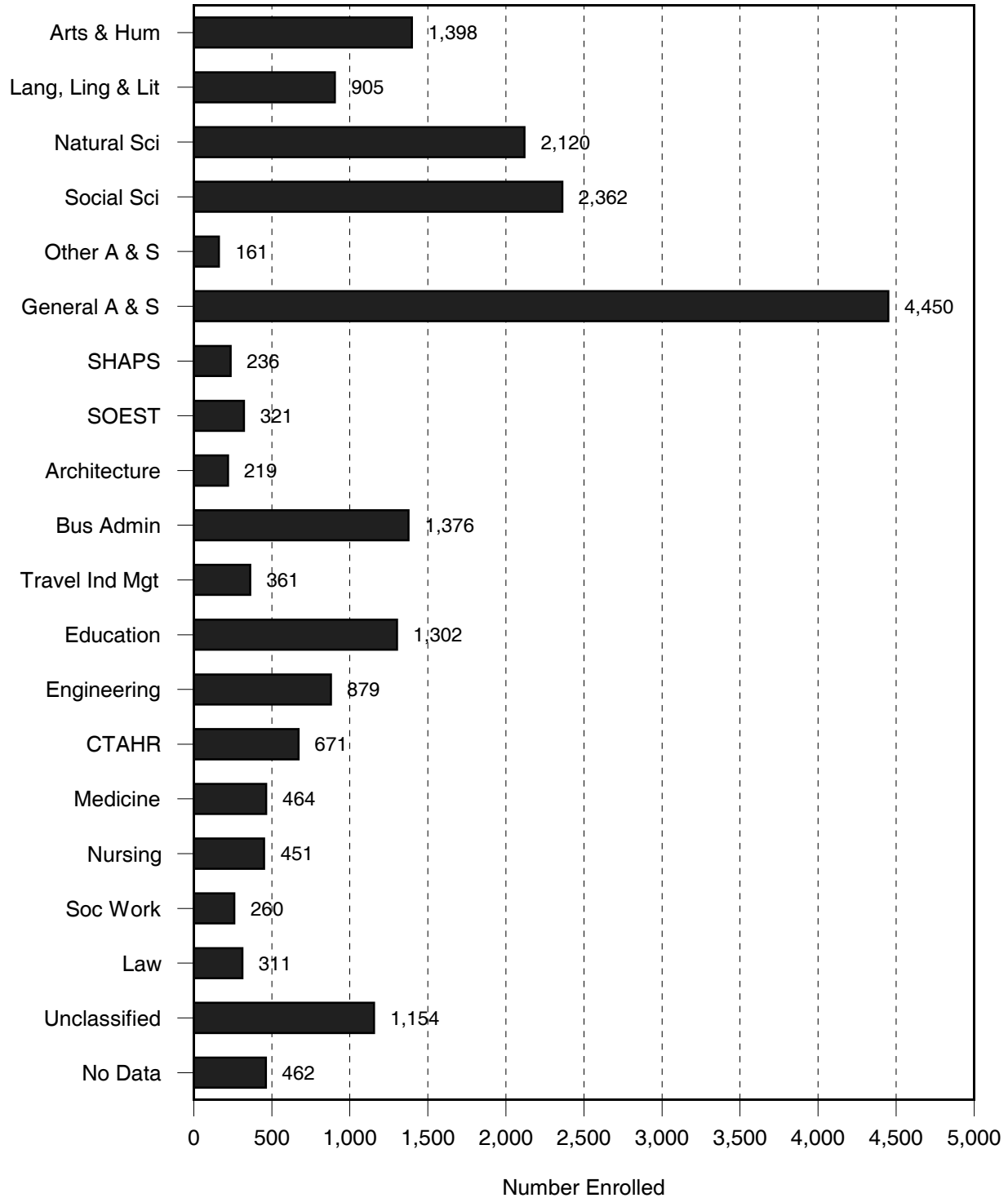
* Includes Post-Baccalaureates and Graduate Specials.

Figure 8
Headcount Enrollment of Unclassified Students



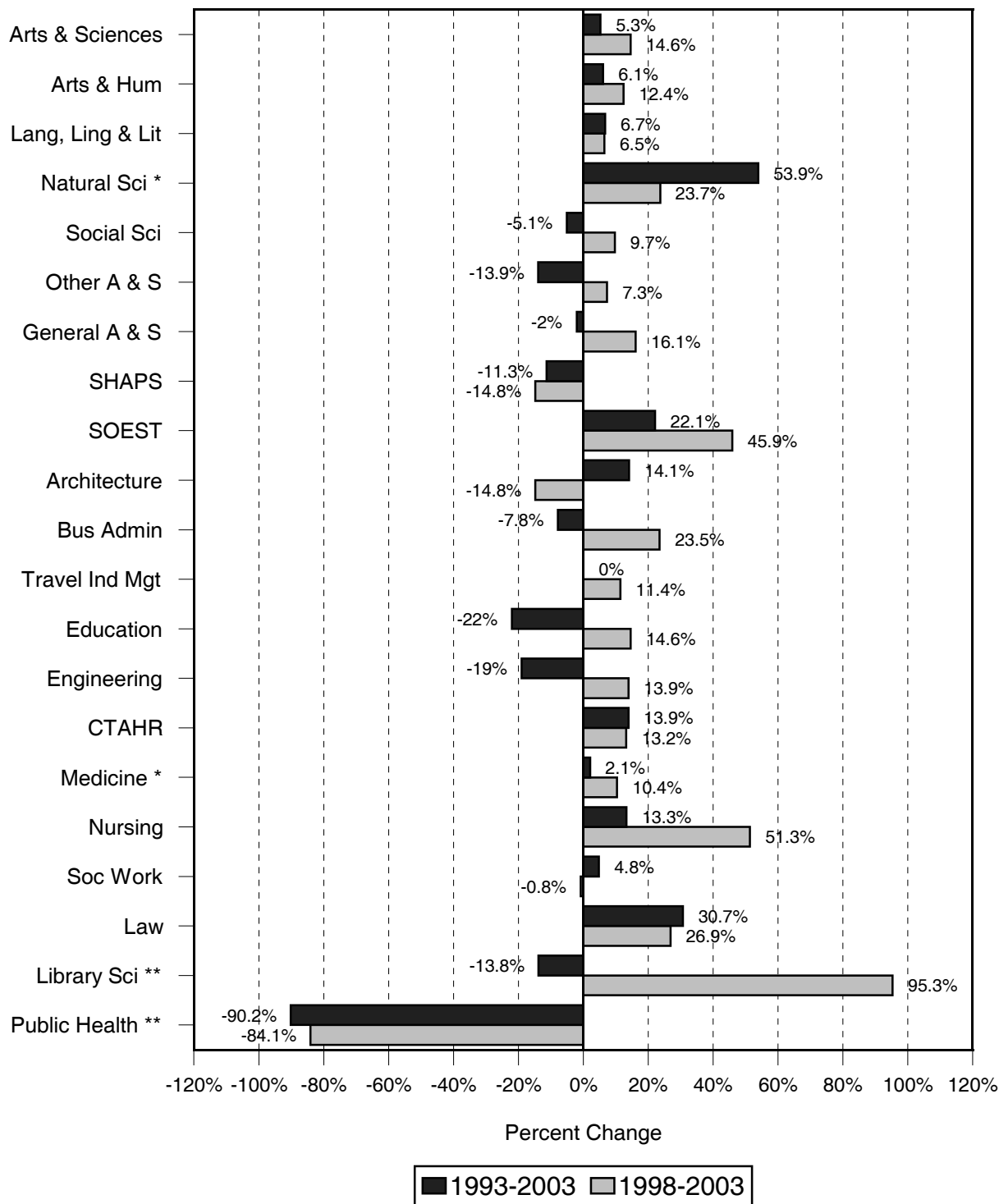
University of Hawai'i at Mānoa
Credit Students

Figure 9
Headcount Enrollment by School / College
Fall 2003



University of Hawai'i at Mānoa
Credit Students

Figure 10
Percentage Change in Enrollment by School / College



* Natural Science excludes Library Science; Medicine excludes Public Health.
** Library Science and Public Health shown separately for comparative purposes.

TABLE 1
HEADCOUNT ENROLLMENT OF CREDIT STUDENTS, BY COLLEGE AND ED LEVEL
UNIVERSITY OF HAWAI'I AT MANOA
FALL 1993 TO FALL 2003

COLLEGE AND LEVEL	FALL SEMESTER										
	1993	1994	1995	1996	1997	1998	1999	2000	2001	2002	2,003
TOTAL	20,090	20,041	19,801	18,252	17,365	17,013	17,612	17,263	17,532	18,706	19,863
Lower Division	4,771	4,577	4,671	4,140	3,994	3,960	3,944	4,044	4,297	4,580	5,729
Upper Division	8,220	8,326	8,379	8,076	7,788	7,540	7,514	7,107	7,188	7,662	7,340
Graduate Level	5,343	5,518	5,220	4,789	4,514	4,508	4,741	4,567	4,536	4,834	5,167
Unclassified	1,695	1,581	1,500	1,229	1,060	1,002	1,405	1,543	1,477	1,610	1,165
No Data	61	39	31	18	9	3	8	2	34	20	462
COLLEGE OF ARTS AND SCIENCES 1/	10,824	10,860	11,126	10,426	10,110	9,946	9,907	9,682	9,907	10,549	11,396
Lower Division	4,204	4,065	4,185	3,663	3,499	3,458	3,450	3,530	3,743	3,936	4,773
Upper Division	4,598	4,745	4,935	4,787	4,684	4,609	4,639	4,368	4,389	4,713	4,602
Graduate Level	2,022	2,050	2,006	1,976	1,927	1,879	1,818	1,784	1,775	1,900	2,021
ARTS & HUMANITIES	1,318	1,339	1,340	1,317	1,265	1,244	1,220	1,174	1,206	1,355	1,398
Lower Division	167	156	135	146	170	169	198	185	209	236	352
Upper Division	755	757	761	753	680	672	649	644	665	768	689
Graduate Level	396	426	444	418	415	403	373	345	332	351	357
LANG, LING & LIT	848	854	818	845	848	850	857	887	882	912	905
Lower Division	60	31	34	37	33	71	109	94	120	117	157
Upper Division	422	433	414	399	386	371	372	408	398	412	344
Graduate Level	366	390	370	409	429	408	376	385	364	383	404
NATURAL SCIENCES 1/	1,441	1,440	1,560	1,548	1,683	1,714	1,782	1,815	1,862	2,033	2,120
Lower Division	280	275	314	321	372	375	419	505	554	592	739
Upper Division	709	731	807	820	914	970	963	922	918	1,003	887
Graduate Level	452	434	439	407	397	369	400	388	390	438	494
SOCIAL SCIENCES	2,488	2,392	2,338	2,262	2,143	2,154	2,124	2,061	2,141	2,234	2,362
Lower Division	170	128	116	109	110	214	257	300	334	354	568
Upper Division	1,544	1,492	1,494	1,436	1,379	1,267	1,229	1,125	1,156	1,195	1,075
Graduate Level	774	772	728	717	654	673	638	636	651	685	719
OTHER ARTS & SCIENCES	187	186	193	184	153	150	173	161	173	174	161
Lower Division	1	2		1							3
Upper Division	152	156	168	158	121	124	142	131	135	131	111
Graduate Level	34	28	25	25	32	26	31	30	38	43	47
GENERAL ARTS & SCIENCES	4,542	4,649	4,877	4,270	4,018	3,834	3,751	3,584	3,643	3,841	4,450
Lower Division	3,526	3,473	3,586	3,049	2,814	2,629	2,467	2,446	2,526	2,637	2,954
Upper Division	1,016	1,176	1,291	1,221	1,204	1,205	1,284	1,138	1,117	1,204	1,496

Table 1 (cont.)

COLLEGE AND LEVEL	FALL SEMESTER										
	1993	1994	1995	1996	1997	1998	1999	2000	2001	2002	2,003
SCH OF HAWN, ASIAN & PAC ST	266	264	280	252	272	277	276	227	215	222	236
Lower Division	25	34	31	27	26	25	29	30	25	28	44
Upper Division	134	147	160	149	167	166	151	106	103	90	94
Graduate Level	107	83	89	76	79	86	96	91	87	104	98
SCH OF OCEAN, EARTH SCI & TECH	263	253	252	229	215	220	225	270	290	305	321
Lower Division	16	12	11	9	5	16	22	37	52	43	60
Upper Division	42	45	58	46	37	37	41	59	78	94	78
Graduate Level	205	196	183	174	173	167	162	174	160	168	183
SCHOOL OF ARCHITECTURE	192	215	242	275	257	257	240	210	212	209	219
Lower Division	36	39	46	56	57	55	44	48	54	69	80
Upper Division	136	158	176	193	176	172	151	123	120	104	81
Graduate Level	20	18	20	26	24	30	45	39	38	36	58
COLLEGE OF BUSINESS ADMIN	1,492	1,375	1,243	1,102	1,063	1,114	1,228	1,202	1,205	1,309	1,376
Lower Division	4		1	2	2	2			3	3	43
Upper Division	1,160	1,027	912	831	824	847	841	796	781	874	848
Graduate Level	328	348	330	269	237	265	387	406	421	432	485
SCH OF TRAVEL INDUSTRY MGT	361	374	352	290	304	324	326	304	354	349	361
Lower Division	64	41	43	40	49	71	77	83	88	76	108
Upper Division	282	317	293	232	237	234	227	201	243	253	231
Graduate Level	15	16	16	18	18	19	22	20	23	20	22
COLLEGE OF EDUCATION	1,669	1,721	1,581	1,411	1,213	1,136	1,269	1,189	1,215	1,295	1,302
Lower Division	2	3	1	6	4	3	2	3	4	4	18
Upper Division	603	590	632	649	513	409	394	367	421	448	355
Graduate Level	1,064	1,128	948	756	696	724	873	819	790	843	929
COLLEGE OF ENGINEERING	1,085	1,081	958	897	832	772	729	705	716	781	879
Lower Division	326	292	264	251	265	241	217	217	223	269	373
Upper Division	576	585	499	474	408	373	348	340	355	362	351
Graduate Level	183	204	195	172	159	158	164	148	138	150	155
COLLEGE OF TROP AG & HUMAN RES	589	624	601	594	616	593	607	614	579	594	671
Lower Division	79	76	76	81	81	86	98	89	91	122	187
Upper Division	299	335	343	355	400	381	390	389	341	314	309
Graduate Level	211	213	182	158	135	126	119	136	147	158	175
SCHOOL OF MEDICINE 2/	721	755	727	667	612	576	549	475	493	499	464
Lower Division								1	1	2	5
Upper Division	60	55	55	58	51	42	55	55	51	58	54
Graduate Level	661	700	672	609	561	534	494	419	441	439	405

Table 1 (cont.)

COLLEGE AND LEVEL	FALL SEMESTER										
	1993	1994	1995	1996	1997	1998	1999	2000	2001	2002	2,003
SCHOOL OF NURSING	398	394	370	337	312	298	326	348	363	428	451
Lower Division	14	15	13	5	5	2	5	6	13	24	35
Upper Division	279	267	260	239	233	219	233	263	267	316	324
Graduate Level	105	112	97	93	74	77	88	79	83	88	92
SCHOOL OF SOCIAL WORK	248	279	308	297	266	262	284	262	242	283	260
Lower Division	1				1	1				4	3
Upper Division	51	55	56	63	58	51	44	40	39	36	13
Graduate Level	196	224	252	234	207	210	240	222	203	243	244
SCHOOL OF LAW	238	238	241	240	236	245	242	242	242	265	311
Graduate Level	226	226	230	228	224	233	233	230	230	253	300
Unclassified 3/	12	12	11	12	12	12	9	12	12	12	11
UNCLASSIFIED	1,683	1,569	1,489	1,217	1,048	990	1,396	1,531	1,465	1,598	1,154
Undergraduate Level	401	364	331	299	247	291	473	568	535	568	223
Graduate Level	1,282	1,205	1,158	918	801	699	923	963	930	1,030	931
NO DATA	61	39	31	18	9	3	8	2	34	20	462

1/ Botanical Science - Plant Physiology / Plant Pathology moved from Natural Science to CTAHR, effective Fall 1993. The School of Library and Information Studies merged with the Department of Information and Computer Sciences in Natural Sciences, effective Fall 1997. The totals shown for Natural Sciences, the College of Arts and Sciences and CTAHR have been adjusted for prior years for comparative purposes, and may not tie to totals shown elsewhere.

2/ School of Public Health merged with School of Medicine, by action of UH Board of Regents, July 2000; data for prior years have been adjusted.

3/ Included with Unclassified in campus total.

SOURCE: Computer Report R1401A.

TABLE 2
HEADCOUNT ENROLLMENT OF CREDIT STUDENTS, BY MAJOR AND LEVEL
UNIVERSITY OF HAWAI'I AT MANOA
FALL 1993 TO FALL 2003

MAJOR	FALL SEMESTER										
	1993	1994	1995	1996	1997	1998	1999	2000	2001	2002	2003
TOTAL	20,090	20,041	19,801	18,252	17,365	17,013	17,612	17,263	17,532	18,706	19,863
Lower Division	4,771	4,577	4,671	4,140	3,994	3,960	3,944	4,044	4,297	4,580	5,729
Upper Division	8,220	8,326	8,379	8,076	7,788	7,540	7,514	7,107	7,188	7,662	7,340
Graduate Level	5,343	5,518	5,220	4,789	4,514	4,508	4,741	4,567	4,536	4,834	5,167
Unclassified	1,695	1,581	1,500	1,229	1,060	1,002	1,405	1,543	1,477	1,610	1,165
No Data	61	39	31	18	9	3	8	2	34	20	462
COLLEGE OF ARTS AND SCIENCES 1/	10,824	10,860	11,126	10,426	10,110	9,946	9,907	9,682	9,907	10,549	11,396
Lower Division	4,204	4,065	4,185	3,663	3,499	3,458	3,450	3,530	3,743	3,936	4,773
Upper Division	4,598	4,745	4,935	4,787	4,684	4,609	4,639	4,368	4,389	4,713	4,602
Graduate Level	2,022	2,050	2,006	1,976	1,927	1,879	1,818	1,784	1,775	1,900	2,021
ARTS & HUMANITIES	1,318	1,339	1,340	1,317	1,265	1,244	1,220	1,174	1,206	1,355	1,398
Lower Division	167	156	135	146	170	169	198	185	209	236	352
Upper Division	755	757	761	753	680	672	649	644	665	768	689
Graduate Level	396	426	444	418	415	403	373	345	332	351	357
American Studies	101	115	128	124	115	114	99	84	83	96	88
Lower Division (BA)	3	4	2		3	1	2		1	1	8
Upper Division (BA)	32	41	40	41	34	38	32	27	31	35	20
Graduate Level (MA)	28	29	38	40	35	33	22	19	21	27	28
Graduate Level (PhD)	36	37	42	40	39	40	39	35	29	29	29
Graduate Level (Other)	2	4	6	3	4	2	4	3	1	4	3
Art	474	477	451	459	412	406	412	411	442	517	520
Lower Division	82	69	57	56	64	76	95	86	98	110	147
Upper Division	351	366	352	355	301	290	280	290	305	371	341
Graduate Level	41	42	42	48	47	40	37	35	39	36	32
Art (BA, MA)	202	220	240	304	293	319	344	355	389	456	448
Lower Division	43	41	39	48	63	76	95	85	98	110	141
Upper Division	153	169	192	243	219	236	242	264	283	337	301
Graduate Level	6	10	9	13	11	7	7	6	8	9	6
Art (BFA, MFA)	272	257	211	155	119	87	68	56	53	61	72
Lower Division	39	28	18	8	1			1			6
Upper Division	198	197	160	112	82	54	38	26	22	34	40
Graduate Level	35	32	33	35	36	33	30	29	31	27	26
Theater and Dance	125	122	125	122	156	163	150	144	140	152	141
Lower Division	15	22	23	21	23	21	19	23	29	38	47
Upper Division	39	30	41	46	61	72	65	58	55	57	42
Graduate Level	71	70	61	55	72	70	66	63	56	57	52

Table 2 (cont.)

MAJOR	FALL SEMESTER										
	1993	1994	1995	1996	1997	1998	1999	2000	2001	2002	2003
Dance	18	18	22	27	46	43	36	40	37	51	42
Lower Division	1		3	6	7	3	5	9	12	14	14
Upper Division	8	8	10	13	23	22	19	15	13	24	15
Graduate Level	9	10	9	8	16	18	12	16	12	13	13
Dance (BA, MA)	3	9	11	16	35	32	27	30	25	34	34
Lower Division			2	5	6	3	5	7	10	12	14
Upper Division		5	7	9	19	15	13	12	10	16	15
Graduate Level	3	4	2	2	10	14	9	11	5	6	5
Dance Ethnology (BA) 2/	3	1				1	1				
Lower Division	1										
Upper Division	2	1				1	1				
Dance Theatre (BFA)	6	2	4	5	5	6	5	5	5	10	
Lower Division			1	1	1			2	2	2	
Upper Division	6	2	3	4	4	6	5	3	3	8	
Dance (MFA)	6	6	7	6	6	4	3	5	7	7	8
Graduate Level	6	6	7	6	6	4	3	5	7	7	8
Theater	107	104	103	95	110	120	114	104	103	101	99
Lower Division	14	22	20	15	16	18	14	14	17	24	33
Upper Division	31	22	31	33	38	50	46	43	42	33	27
Graduate Level	62	60	52	47	56	52	54	47	44	44	39
Theater	77	73	77	72	85	94	88	80	77	77	74
Lower Division (BA)	14	22	20	15	16	18	14	14	17	24	33
Upper Division (BA)	31	22	31	33	38	50	46	43	42	33	27
Graduate Level (MA)	4	4	4	3	7	5	6	7	5	6	4
Graduate Level (PhD)	28	25	22	21	24	21	22	16	13	14	10
Drama-Dance (MA) 3/	1										
Graduate Level	1										
Theater (MFA)	29	31	26	23	25	26	26	24	26	24	25
Graduate Level	29	31	26	23	25	26	26	24	26	24	25
History	226	236	239	224	225	208	197	199	219	242	255
Lower Division (BA)	11	13	9	8	12	12	16	17	22	25	57
Upper Division (BA)	124	122	124	121	126	110	106	110	122	135	114
Graduate Level (MA)	42	39	40	35	29	28	21	23	30	33	35
Graduate Level (PhD)	49	55	58	52	51	51	49	45	45	49	49
Graduate Level (Other)		7	8	8	7	7	5	4			

Table 2 (cont.)

MAJOR	FALL SEMESTER										
	1993	1994	1995	1996	1997	1998	1999	2000	2001	2002	2003
Music	156	159	172	184	192	189	194	178	166	168	184
Lower Division	47	41	38	58	60	52	59	50	46	41	60
Upper Division	78	75	86	81	76	89	92	83	77	86	81
Graduate Level	31	43	48	45	56	48	43	45	43	41	43
Music	129	132	147	162	166	168	166	157	149	150	147
Lower Division (BA)	41	38	36	55	57	51	55	47	44	40	45
Upper Division (BA)	64	61	73	71	63	74	73	69	66	74	68
Graduate Level (MA)	16	22	25	25	30	28	24	24	21	19	16
Graduate Level (PhD)	8	11	13	11	16	15	14	17	18	17	18
Music (BMus, MMus)	27	27	25	22	26	21	28	21	17	18	37
Lower Division	6	3	2	3	3	1	4	3	2	1	15
Upper Division	14	14	13	10	13	15	19	14	11	12	13
Graduate Level	7	10	10	9	10	5	5	4	4	5	9
Philosophy	75	79	88	73	66	72	77	73	79	88	101
Lower Division (BA)	2	4	4	1	4	3	3	7	8	12	15
Upper Division (BA)	17	18	27	23	18	22	24	19	22	27	32
Graduate Level (MA)	14	12	10	12	8	14	16	16	15	13	18
Graduate Level (PhD)	42	45	47	37	36	33	34	31	34	36	36
Religion	33	35	35	37	31	36	37	29	21	32	41
Lower Division (BA)	1	1	2	1	2	1	4		4	6	3
Upper Division (BA)	14	11	9	12	10	9	9	14	9	17	21
Graduate Level (MA)	18	23	24	24	19	25	24	15	8	8	15
Graduate Level (Other)						1				1	2
Speech	128	116	102	94	68	56	54	56	56	60	68
Lower Division (BA)	6	2		1	2	3		2	1	3	15
Upper Division (BA)	100	94	82	74	54	42	41	43	44	40	38
Graduate Level (MA)	22	20	20	19	12	11	13	11	11	17	15
LANGUAGES, LINGUISTICS & LIT	848	854	818	845	848	850	857	887	882	912	905
Lower Division	60	31	34	37	33	71	109	94	120	117	157
Upper Division	422	433	414	399	386	371	372	408	398	412	344
Graduate Level	366	390	370	409	429	408	376	385	364	383	404
East Asian Lang & Lit	159	166	181	198	187	201	220	226	229	248	228
Lower Division	13	7	14	16	12	25	36	37	49	42	59
Upper Division	99	93	94	107	100	97	106	112	103	121	87
Graduate Level	47	66	73	75	75	79	78	77	77	85	82
Chinese	26	25	28	27	31	29	36	37	40	38	39
Lower Division (BA)	3		3	2	1	1	6	6	5	3	7
Upper Division (BA)	7	7	5	8	13	13	14	14	18	16	13
Graduate Level (MA)	4	4	6	6	6	4	3	2	4	7	6
Graduate Level (PhD)	12	14	14	11	11	11	13	15	13	12	13

Table 2 (cont.)

MAJOR	FALL SEMESTER										
	1993	1994	1995	1996	1997	1998	1999	2000	2001	2002	2003
Japanese	128	134	145	158	144	156	168	172	170	192	170
Lower Division (BA)	10	7	11	13	11	22	30	31	43	38	50
Upper Division (BA)	92	86	88	94	85	80	85	95	82	100	71
Graduate Level (MA)	18	24	29	34	31	33	26	20	24	28	23
Graduate Level (PhD)	8	17	17	17	17	21	27	26	21	26	26
Korean	5	7	8	13	12	16	16	17	19	18	19
Lower Division (BA)				1		2			1	1	2
Upper Division (BA)			1	5	2	4	7	3	3	5	3
Graduate Level (MA)	1	2	1	3	1	1	1	5	5	2	4
Graduate Level (PhD)	4	5	6	4	9	9	8	9	10	10	10
English	393	390	354	334	319	296	323	342	346	352	345
Lower Division (BA)	39	23	15	15	16	25	52	37	51	51	62
Upper Division (BA)	255	272	251	232	214	202	196	229	232	227	191
Graduate Level (MA)	68	65	61	64	65	50	50	52	37	44	56
Graduate Level (PhD)	31	30	27	22	24	19	25	24	26	30	36
Graduate Level (Other)				1							
Hawaiian & Indo-Pac L&L (BA)	16	19	22	20	21	36	36	34	37	40	40
Lower Division				4	1	9	10	5	9	13	20
Upper Division	16	19	22	16	20	27	26	29	28	27	20
Hawaiian	16	19	22	20	21	36	36	34	37	40	40
Lower Division				4	1	9	10	5	9	13	20
Upper Division	16	19	22	16	20	27	26	29	28	27	20
Lang & Lit of Europe & Amer (BA, MA)	103	94	86	85	99	95	88	96	80	76	92
Lower Division	8	1	5	2	4	12	11	15	11	11	16
Upper Division	52	49	47	44	52	45	44	38	35	37	46
Graduate Level	43	44	34	39	43	38	33	43	34	28	30
Classics	9	6	4	2	5	2	2	2	1		1
Lower Division											1
Upper Division	4	3	3		3						
Graduate Level	5	3	1	2	2	2	2	2	1		
French	37	32	29	30	30	28	24	27	22	19	20
Lower Division	3		2		2	4	2	4	3	2	2
Upper Division	17	13	14	18	14	10	8	6	9	8	9
Graduate Level	17	19	13	12	14	14	14	17	10	9	9
German	13	12	9	11	12	9	9	15	11	10	7
Lower Division	1		1					2			
Upper Division	5	5	3	2	3	2	3	3	3	2	2
Graduate Level	7	7	5	9	9	7	6	10	8	8	5

Table 2 (cont.)

MAJOR	FALL SEMESTER										
	1993	1994	1995	1996	1997	1998	1999	2000	2001	2002	2003
Russian	3	2	3	6	7	8	5	2	3	1	3
Lower Division						2	2	1			2
Upper Division	3	2	3	6	7	6	3	1	3	1	1
Spanish	41	42	41	36	45	48	48	50	43	46	61
Lower Division	4	1	2	2	2	6	7	8	8	9	11
Upper Division	23	26	24	18	25	27	30	28	20	26	34
Graduate Level	14	15	15	16	18	15	11	14	15	11	16
Linguistics	78	93	92	103	110	101	81	70	64	68	83
Graduate Level (MA)	23	31	32	39	41	29	20	13	15	16	30
Graduate Level (PhD)	55	62	60	64	69	72	61	56	49	52	53
Graduate Level (Other)								1			
Second Lang Acquisition	12	10	11	10	13	13	16	18	19	19	19
Graduate Level (PhD)	12	10	11	9	13	13	16	18	19	19	19
Graduate Level (Other)				1							
Second Language Studies 4/	87	82	72	95	99	108	93	101	107	109	98
Graduate Level	87	82	72	95	99	108	93	101	107	109	98
English as a Second Language	87	82	72	95	99	108	93	99	103	104	96
Graduate Level (MA)	87	82	72	95	99	108	93	99	103	104	96
Second Lang Studies 5/								2	4	5	2
Graduate Level (GCert)								2	4	5	2
NATURAL SCIENCES 6/	1,441	1,440	1,560	1,548	1,683	1,714	1,782	1,815	1,862	2,033	2,120
Lower Division	280	275	314	321	372	375	419	505	554	592	739
Upper Division	709	731	807	820	914	970	963	922	918	1,003	887
Graduate Level	452	434	439	407	397	369	400	388	390	438	494
Biology	284	274	321	391	482	471	452	435	431	522	609
Lower Division	91	87	105	116	147	126	118	144	136	170	300
Upper Division	193	187	216	275	335	345	334	291	295	352	309
Biology (BA)	127	125	147	223	295	289	254	242	229	267	312
Lower Division	15	12	22	45	57	48	44	55	50	68	137
Upper Division	112	113	125	178	238	241	210	187	179	199	175
Biology (BS)	157	149	174	168	187	182	198	193	202	255	297
Lower Division	76	75	83	71	90	78	74	89	86	102	163
Upper Division	81	74	91	97	97	104	124	104	116	153	134
Botany	34	43	50	56	72	72	77	65	68	86	96
Lower Division	1	2	2	5	8	5	3	3	3	9	6
Upper Division	11	14	14	17	25	26	26	15	19	20	23
Graduate Level	22	27	34	34	39	41	48	47	46	57	67

Table 2 (cont.)

MAJOR	FALL SEMESTER										
	1993	1994	1995	1996	1997	1998	1999	2000	2001	2002	2003
Mathematics	132	112	105	95	90	91	104	90	100	85	88
Lower Division	17	18	14	12	9	20	24	21	28	14	30
Upper Division	91	66	64	53	58	53	60	54	53	50	38
Graduate Level	24	28	27	30	23	18	20	15	19	21	20
Math (BA)	57	43	32	29	36	35	41	34	43	38	37
Lower Division	4			1		3	10	10	17	10	16
Upper Division	53	43	32	28	36	32	31	24	26	28	21
Math	75	69	73	66	54	56	63	56	57	47	51
Lower Division (BS)	13	18	14	11	9	17	14	11	11	4	14
Upper Division (BS)	38	23	32	25	22	21	29	30	27	22	17
Graduate Level (MA)	14	14	14	16	13	6	10	5	7	6	8
Graduate Level (PhD)	10	14	13	14	10	12	10	10	12	15	12
Microbiology	60	61	64	65	69	65	71	73	59	67	84
Lower Division	3	4	4	8	8	7	9	8	10	15	22
Upper Division	30	29	32	30	26	29	28	29	22	24	24
Graduate Level	27	28	28	27	35	29	34	36	27	28	38
Microbiology (BA)	14	14	10	5	5	11	16	13	17	14	15
Lower Division		2				1	3	1	5	9	6
Upper Division	14	12	10	5	5	10	13	12	12	5	9
Microbiology	46	47	54	60	64	54	55	60	42	53	69
Lower Division (BS)	3	2	4	8	8	6	6	7	5	6	16
Upper Division (BS)	16	17	22	25	21	19	15	17	10	19	15
Graduate Level (MS)	14	13	13	13	22	20	24	26	22	21	29
Graduate Level (PhD)	13	15	15	14	13	9	10	10	5	7	9
Physics & Astronomy	108	105	111	105	91	73	81	66	80	77	89
Lower Division	16	12	11	13	9	8	8	7	19	15	13
Upper Division	29	30	37	32	26	17	24	16	14	12	16
Graduate Level	63	63	63	60	56	48	49	43	47	50	60
Astronomy	33	34	32	29	28	24	24	22	27	25	32
Graduate Level (MS)	1	1	1				1	1	1		1
Graduate Level (PhD)	32	33	31	29	28	24	23	21	26	25	31
Physics (BA)	6	6	5	1	1	2	3	3	7	9	8
Lower Division	2		1				1	1	6	7	5
Upper Division	4	6	4	1	1	2	2	2	1	2	3
Physics	69	65	74	75	62	47	54	41	46	43	49
Lower Division (BS)	14	12	10	13	9	8	7	6	13	8	8
Upper Division (BS)	25	24	33	31	25	15	22	14	13	10	13
Graduate Level (MS)	5	3	6	7	4	5	4	4	5	6	6
Graduate Level (PhD)	25	26	25	24	24	19	21	17	15	19	22

Table 2 (cont.)

MAJOR	FALL SEMESTER										
	1993	1994	1995	1996	1997	1998	1999	2000	2001	2002	2003
Economics	278	261	245	196	192	175	159	145	141	161	176
Lower Division (BA)	8	9	5	8	6	10	12	11	12	15	30
Upper Division (BA)	177	156	155	113	112	88	82	68	62	78	79
Graduate Level (MA)	20	27	25	19	20	25	11	13	14	10	14
Graduate Level (PhD)	73	69	60	56	54	52	54	53	53	58	53
Ethnic Studies (BA) 15/			14	25	45	34	28	28	21	22	19
Lower Division				1	3		2	3	2	4	3
Upper Division			14	24	42	34	26	25	19	18	16
Geography	110	113	110	126	105	112	127	110	109	114	108
Lower Division (BA)	3	6	4	5	4	6	2	6		1	6
Upper Division (BA)	40	33	34	41	34	41	58	36	37	34	29
Graduate Level (MA)	35	45	37	41	34	32	31	36	43	48	47
Graduate Level (PhD)	32	29	35	39	33	33	36	32	29	31	26
Gerontology (GCert)	5	5	4	2		2	2	1	2	1	8
Graduate Level	5	5	4	2		2	2	1	2	1	8
International Cultural Studies (GCert) 16/ ..										1	1
Graduate Level										1	1
Political Science	410	359	335	321	279	281	266	260	294	326	360
Lower Division (BA)	27	9	18	11	15	23	24	43	54	44	75
Upper Division (BA)	182	164	161	156	133	125	116	102	120	150	139
Graduate Level (MA)	49	46	38	47	32	35	35	31	30	41	61
Graduate Level (PhD)	152	140	118	107	99	97	91	84	90	91	85
Graduate Level (Other)						1					
Psychology	642	639	642	616	560	562	566	577	632	691	710
Lower Division (BA)	73	54	51	34	32	93	119	136	152	184	249
Upper Division (BA)	467	483	484	479	428	371	353	343	378	412	366
Graduate Level (MA)	49	50	56	52	51	41	43	46	51	45	47
Graduate Level (PhD)	52	50	49	49	47	56	50	50	49	48	45
Graduate Level (Other)	1	2	2	2	2	1	1	2	2	2	3
Public Administration	55	57	47	52	44	46	54	47	43	50	55
Graduate Level (MPA)	55	57	47	52	44	46	50	43	38	48	48
Graduate Level (GCert)							4	4	5	2	7
Sociology	356	347	377	346	307	297	292	275	256	262	281
Lower Division (BA)	20	24	20	25	21	30	30	27	27	24	55
Upper Division (BA)	278	260	288	257	229	210	206	183	171	170	154
Graduate Level (MA)	18	13	18	15	10	13	14	18	13	16	20
Graduate Level (PhD)	40	50	51	49	47	43	42	46	45	50	52
Graduate Level (Other)						1		1		2	

Table 2 (cont.)

MAJOR	FALL SEMESTER										
	1993	1994	1995	1996	1997	1998	1999	2000	2001	2002	2003
Urban & Regional Planning 17/	62	66	67	62	57	59	51	57	55	57	71
Graduate Level (MURP)	60	66	67	62	56	57	50	57	54	53	64
Graduate Level (PhD)										3	5
Graduate Level (Other)	2				1	2	1		1	1	2
OTHER ARTS & SCIENCES	187	186	193	184	153	150	173	161	173	174	161
Lower Division	1	2		1							3
Upper Division	152	156	168	158	121	124	142	131	135	131	111
Graduate Level	34	28	25	25	32	26	31	30	38	43	47
Comm & Info Science (PhD) 18/	34	28	25	25	32	26	31	30	38	43	47
Graduate Level	34	28	25	25	32	26	31	30	38	43	47
Liberal Studies (BA)	153	158	168	159	121	124	142	131	135	131	114
Lower Division	1	2		1							3
Upper Division	152	156	168	158	121	124	142	131	135	131	111
GENERAL ARTS & SCIENCES (BA)	4,542	4,649	4,877	4,270	4,018	3,834	3,751	3,584	3,643	3,841	4,450
Lower Division	3,526	3,473	3,586	3,049	2,814	2,629	2,467	2,446	2,526	2,637	2,954
Upper Division	1,016	1,176	1,291	1,221	1,204	1,205	1,284	1,138	1,117	1,204	1,496
General	3,170	3,121	3,204	2,763	2,599	2,355	2,269	2,071	2,002	2,089	2,248
Lower Division	2,424	2,298	2,328	1,973	1,818	1,624	1,485	1,437	1,426	1,473	1,536
Upper Division	746	823	876	790	781	731	784	634	576	616	712
Pre-Professional	1,372	1,528	1,673	1,507	1,419	1,479	1,482	1,513	1,641	1,752	2,202
Lower Division	1,102	1,175	1,258	1,076	996	1,005	982	1,009	1,100	1,164	1,418
Upper Division	270	353	415	431	423	474	500	504	541	588	784
Pre-Business Administration	640	645	664	575	562	616	627	668	746	751	893
Lower Division	521	483	486	400	411	446	423	457	515	503	593
Upper Division	119	162	178	175	151	170	204	211	231	248	300
Pre-Dental	17	22	18	22	19	19	26	18	10	16	27
Lower Division	14	13	18	16	11	17	16	10	7	11	19
Upper Division	3	9		6	8	2	10	8	3	5	8
Pre-Education	241	303	358	328	315	305	287	305	355	411	498
Lower Division	195	229	268	224	203	174	162	179	227	244	237
Upper Division	46	74	90	104	112	131	125	126	128	167	261
Pre-Law	48	47	59	50	47	40	40	41	46	51	76
Lower Division	40	36	49	39	32	23	31	38	38	43	60
Upper Division	8	11	10	11	15	17	9	3	8	8	16
Pre-Medical	233	263	314	288	218	206	205	173	163	165	184
Lower Division	184	220	241	225	153	150	159	131	111	126	152
Upper Division	49	43	73	63	65	56	46	42	52	39	32

Table 2 (cont.)

MAJOR	FALL SEMESTER										
	1993	1994	1995	1996	1997	1998	1999	2000	2001	2002	2003
Pre-Medical Technology	40	41	40	38	34	30	30	30	27	24	30
Lower Division	26	25	30	30	24	16	18	19	16	14	20
Upper Division	14	16	10	8	10	14	12	11	11	10	10
Pre-Nursing	85	133	131	112	110	104	94	89	116	125	215
Lower Division	75	111	99	81	73	69	71	59	78	92	158
Upper Division	10	22	32	31	37	35	23	30	38	33	57
Pre-Pharmacy	37	53	62	63	57	60	48	43	37	65	85
Lower Division	31	44	45	42	43	41	28	29	29	55	68
Upper Division	6	9	17	21	14	19	20	14	8	10	17
Pre-Kinesiology & Leisure Sci 19/					22	60	91	96	96	98	121
Lower Division					20	45	54	57	53	54	71
Upper Division					2	15	37	39	43	44	50
Pre-Social Work	16	12	23	25	23	21	20	30	29	28	53
Lower Division	11	11	20	14	14	12	10	16	17	15	28
Upper Division	5	1	3	11	9	9	10	14	12	13	25
Pre-Speech Path & Audiology	7	7	4	6	12	12	12	16	13	17	18
Lower Division	5	3	2	5	12	8	9	12	7	7	11
Upper Division	2	4	2	1		4	3	4	6	10	7
Pre-Travel Industry Mgt	8	2				6	2	4	3	1	2
Lower Division						4	1	2	2		1
Upper Division	8	2				2	1	2	1	1	1
SCH OF HAWN, ASIAN & PACIFIC ST	266	264	280	252	272	277	276	227	215	222	236
Lower Division	25	34	31	27	26	25	29	30	25	28	44
Upper Division	134	147	160	149	167	166	151	106	103	90	94
Graduate Level	107	83	89	76	79	86	96	91	87	104	98
Asian Studies	156	142	159	126	134	139	142	117	121	126	132
Lower Division (BA)	7	11	13	9	8	7	14	11	17	19	28
Upper Division (BA)	69	73	77	67	76	72	64	46	45	37	41
Graduate Level (MA)	72	58	69	50	50	60	64	60	59	70	63
Graduate Level (Other) 20/	8										
Hawaiian Studies (BA).....	83	97	101	100	109	112	102	79	66	62	69
Lower Division	18	23	18	18	18	18	15	19	8	9	16
Upper Division	65	74	83	82	91	94	87	60	58	53	53
Pacific Island Studies	27	25	20	26	29	26	32	31	28	34	35
Graduate Level (MA)	26	25	20	25	28	26	32	31	28	34	35
Graduate Level (Other)	1			1	1						

Table 2 (cont.)

MAJOR	FALL SEMESTER										
	1993	1994	1995	1996	1997	1998	1999	2000	2001	2002	2003
SCH OF OCEAN, EARTH SCI & TECH	263	253	252	229	215	220	225	270	290	305	321
Lower Division	16	12	11	9	5	16	22	37	52	43	60
Upper Division	42	45	58	46	37	37	41	59	78	94	78
Graduate Level	205	196	183	174	173	167	162	174	160	168	183
Geology-Geophysics	116	105	111	96	89	84	81	82	68	85	92
Lower Division	8	5	9	6	2	5	8	8	7	10	17
Upper Division	36	35	44	34	27	22	22	22	22	28	21
Graduate Level	72	65	58	56	60	57	51	52	39	47	54
Geology (BA)	7	10	21	13	7	10	10	12	7	6	9
Lower Division		2	5	3	1	2	4	5	1	2	4
Upper Division	7	8	16	10	6	8	6	7	6	4	5
Geology-Geophysics	109	95	90	83	82	74	71	70	61	79	83
Lower Division (BS)	8	3	4	3	1	3	4	3	6	8	13
Upper Division (BS)	29	27	28	24	21	14	16	15	16	24	16
Graduate Level (MS)	23	19	17	18	22	23	23	22	18	21	27
Graduate Level (PhD)	46	43	38	35	35	31	25	27	21	26	27
Graduate Level (Other)	3	3	3	3	3	3	3	3			
Meteorology	41	44	46	46	49	58	53	66	71	65	77
Lower Division (BS)	8	7	2	3	3	8	7	11	17	12	17
Upper Division (BS)	6	10	14	12	10	13	9	15	15	13	14
Graduate Level (MS)	10	11	13	15	20	22	20	22	18	18	18
Graduate Level (PhD)	17	16	17	16	16	15	17	18	21	22	28
Ocean & Resources Engineering 21/	34	29	24	25	20	22	24	21	22	24	28
Graduate Level (MS)	12	9	7	7	8	8	15	12	12	13	17
Graduate Level (PhD)	22	20	17	18	12	14	9	9	10	11	11
Oceanography	72	75	71	62	57	56	67	101	129	131	124
Lower Division						3	7	18	28	21	26
Upper Division						2	10	22	41	53	43
Graduate Level	72	75	71	62	57	51	50	61	60	57	55
Global Environ Sci (BS) 22/						5	17	40	69	74	69
Lower Division						3	7	18	28	21	26
Upper Division						2	10	22	41	53	43
Maritime Arch & Hist (GCert) 23/					6	3	4	7	3		
Graduate Level					6	3	4	7	3		
Oceanography	72	75	71	62	51	48	46	54	57	57	55
Graduate Level (MS)	20	25	23	18	14	13	12	17	16	19	17
Graduate Level (PhD)	47	45	43	40	35	31	30	33	39	38	37
Graduate Level (Other)	5	5	5	4	2	4	4	4	2		1

Table 2 (cont.)

MAJOR	FALL SEMESTER										
	1993	1994	1995	1996	1997	1998	1999	2000	2001	2002	2003
SCHOOL OF ARCHITECTURE	192	215	242	275	257	257	240	210	212	209	219
Lower Division	36	39	46	56	57	55	44	48	54	69	80
Upper Division	136	158	176	193	176	172	151	123	120	104	81
Graduate Level	20	18	20	26	24	30	45	39	38	36	58
Architecture 24/	192	215	242	275	257	257	223	153	101	46	19
Lower Division (BArch)	36	39	46	56	57	55	44	19	5		1
Upper Division (BArch)	136	158	176	193	176	172	151	115	84	42	18
Graduate Level (MArch)	20	18	20	26	24	30	27	19	12	4	
Graduate Level (Other)							1				
Architecture 25/							17	57	111	163	200
Lower Division (ArchD)								29	49	69	79
Upper Division (ArchD)								8	36	62	63
First-Professional (ArchD)							17	20	26	32	58
COLLEGE OF BUSINESS ADMIN	1,492	1,375	1,243	1,102	1,063	1,114	1,228	1,202	1,205	1,309	1,376
Lower Division	4		1	2	2	2			3	3	43
Upper Division	1,160	1,027	912	831	824	847	841	796	781	874	848
Graduate Level	328	348	330	269	237	265	387	406	421	432	485
School of Accountancy (BBA, MAcc)	259	282	293	277	276	307	283	229	216	287	317
Lower Division			1		1					1	14
Upper Division	231	241	257	252	254	278	246	189	161	191	194
Graduate Level	28	41	35	25	21	29	37	40	55	95	109
Business Administration	300	307	295	244	216	230	343	353	353	325	329
Graduate Level (MBA)	298	304	292	242	215	228	341	353	353	325	329
Graduate Level (Other)	2	3	3	2	1	2	2				
Financial Economics & Inst	77	49	48	44	44	45	40	40	45	45	36
Upper Division	77	49	48	44	44	45	40	40	45	45	36
Business Economics (BBA) 26/	2							1	1	1	
Upper Division	2							1	1	1	
Finance (BBA)	65	42	39	38	42	43	39	38	42	41	36
Upper Division	65	42	39	38	42	43	39	38	42	41	36
Real Estate (BBA)	10	7	9	6	2	2	1	1	2	3	
Upper Division	10	7	9	6	2	2	1	1	2	3	
General Business (BBA)	652	578	455	353	363	342	367	368	367	446	495
Lower Division	4			1	1	2			1	2	26
Upper Division	648	578	455	352	362	340	367	368	366	444	469
International Management (PhD) 27/						6	7	13	13	12	20
Graduate Level						6	7	13	13	12	20

Table 2 (cont.)

MAJOR	FALL SEMESTER										
	1993	1994	1995	1996	1997	1998	1999	2000	2001	2002	2003
Curriculum & Instruction (EdD) 33/	12	10	8	6	3	2					
Graduate Level	12	10	8	6	3	2					
Early Childhood Ed (MEd) 34/											29
Graduate Level											29
Education 35/	60	73	99	118	111	129	148	158	171	178	183
Graduate Level (MEdT)	33	38	50	54	40	44	45	49	51	57	53
Graduate Level (PhD)	27	35	49	64	71	85	103	109	120	121	130
Educational Administration	157	142	154	126	110	94	82	88	91	101	88
Graduate Level (MEd)	136	129	143	117	102	87	82	88	91	101	88
Graduate Level (EdD) 33/	20	13	11	9	8	7					
Graduate Level (Other)	1										
Educational Comm & Tech (MEd)	14	22	21	25	42	43	44	47	45	34	41
Graduate Level	14	22	21	25	42	43	44	47	45	34	41
Educational Foundations	39	43	40	34	38	41	71	68	50	72	64
Graduate Level (MEd)	28	32	32	27	31	35	71	68	50	72	64
Graduate Level (EdD) 33/	11	11	8	7	7	6					
Educational Psychology	36	34	30	28	29	34	31	39	47	62	54
Graduate Level (MEd)	11	13	7	8	4	7	5	16	27	36	28
Graduate Level (PhD)	25	21	23	20	25	27	26	23	20	26	26
Elementary Education	735	732	608	475	384	350	354	329	393	383	312
Lower Division	2	2	1	2	1	1	1	3	4	4	14
Upper Division	416	408	375	336	284	241	258	251	317	320	256
Graduate Level	317	322	232	137	99	108	95	75	72	59	42
BEd, PD Programs	649	644	515	370	287	243	259	254	321	324	270
Lower Division	2	2	1	2	1	1	1	3	4	4	14
Upper Division	416	408	375	336	284	241	258	251	317	320	256
Graduate Level 36/	231	234	139	32	2	1					
Art				8	9	4	1	2	1		
Upper Division				8	9	4	1	2	1		
Dance	4	3	1	1	3	2	2	1			
Lower Division	1										
Upper Division	3	3	1	1	3	2	2	1			
Early Childhood	69	68	37	27	40	19	8	11	21	31	22
Lower Division		1									1
Upper Division	55	49	25	24	39	18	8	11	21	31	21
Graduate Level	14	18	12	3	1	1					

Table 2 (cont.)

MAJOR	FALL SEMESTER										
	1993	1994	1995	1996	1997	1998	1999	2000	2001	2002	2003
Elementary Education	325	312	280	70	24	20	14	25	113	171	180
Lower Division		1	1	2	1			1	1	3	10
Upper Division	147	148	184	48	22	20	14	24	112	168	170
Graduate Level	178	163	95	20	1						
English as a Second Language	3	3	3				1	1			
Lower Division							1				
Upper Division	2	3	3					1			
Graduate Level	1										
Family Resources				52	34	34	27	16	7		
Upper Division				52	34	34	27	16	7		
Geography						1			1	1	
Upper Division						1			1	1	
Hawaiian & Foreign Lang	11	11	11	9	11	8	5	4			
Upper Division	10	10	10	8	11	8	5	4			
Graduate Level	1	1	1	1							
Hawaiian Studies				25	18	18	19	15	5	1	
Upper Division				25	18	18	19	15	5	1	
History	15	9	10	11	18	18	17	2	4	1	
Upper Division	12	8	10	11	18	18	17	2	4	1	
Graduate Level	3	1									
Language Arts	33	42	31	15	5	8	9	7	19	10	
Upper Division	29	38	28	15	5	8	9	7	19	10	
Graduate Level	4	4	3								
Mathematics	22	15	18	11	10	4	5	9	12	4	
Upper Division	18	13	13	9	10	4	5	9	12	4	
Graduate Level	4	2	5	2							
Music	10	11	6	3	2		2	1			
Upper Division	9	8	3	2	2		2	1			
Graduate Level	1	3	3	1							
Phys Educ Generalist	6	8	8	4	2		1				
Upper Division	6	7	6	3	2		1				
Graduate Level		1	2	1							
Psychology	52	63	39	26	13	6	4	2			
Lower Division	1										
Upper Division	40	41	29	23	13	6	4	2			
Graduate Level	11	22	10	3							

Table 2 (cont.)

MAJOR	FALL SEMESTER										
	1993	1994	1995	1996	1997	1998	1999	2000	2001	2002	2003
German	1	2					1				
Upper Division		1					1				
Graduate Level	1	1									
Guidance	1	2	1								
Graduate Level	1	2	1								
Hawaiian	4	7	9	8	6	4	3	3	1	1	2
Lower Division											1
Upper Division	3	4	6	5	6	4	3	3	1	1	1
Graduate Level	1	3	3	3							
Hawaiian Studies	7	5	7	12	4	2	1	1	1		
Upper Division	4	5	6	12	4	2	1	1	1		
Graduate Level	3		1								
Health	3										1
Upper Division	2										1
Graduate Level	1										
History	31	35	34	28	16	10	4	2	2	7	2
Lower Division						1					
Upper Division	15	12	24	24	16	9	4	2	2	7	2
Graduate Level	16	23	10	4							
Industrial Arts	4	3	9	6	6	9	11	4	1	1	2
Upper Division	1	1	5	4	6	9	11	4	1	1	2
Graduate Level	3	2	4	2							
Japanese	14	13	12	11	7	6	5	4	4	4	1
Upper Division	6	6	6	9	6	5	5	4	4	4	1
Graduate Level	8	7	6	2	1	1					
Mathematics	41	50	33	37	25	14	8	4	5	6	9
Upper Division	8	10	14	31	25	14	8	4	5	6	9
Graduate Level	33	40	19	6							
Music	12	13	15	11	9	11	14	9	10	10	6
Upper Division	6	4	6	7	9	11	14	9	10	10	6
Graduate Level	6	9	9	4							
Philippine Languages				1							
Upper Division				1							
Physical Education	37	38	29	32	17	16	19	15	13	15	13
Lower Division				1							
Upper Division	21	18	18	27	17	16	19	15	13	15	13
Graduate Level	16	20	11	4							

Table 2 (cont.)

MAJOR	FALL SEMESTER										
	1993	1994	1995	1996	1997	1998	1999	2000	2001	2002	2003
Physical Science	1	1	1	2					1	6	2
Upper Division		1	1	2					1	6	2
Graduate Level	1										
Physics	1		2	6	5	3		1			
Upper Division	1		2	6	5	3		1			
Political Science	6	6	3	2	1	1	1	1			
Upper Division	2	3	2	2	1	1	1	1			
Graduate Level	4	3	1								
Psychology	13	6	11	6	7	6	2	3	2		
Upper Division	5	6	9	6	7	6	2	3	2		
Graduate Level	8		2								
Russian	1										
Graduate Level	1										
Secondary Education	8	6	2		40	59	131	89	61	85	134
Lower Division											1
Upper Division	6	6	2								2
Graduate Level (PD) 36/	2										
Graduate Level (PB) 39/					40	59	131	89	61	85	131
Social Studies	9										
Upper Division	4										
Graduate Level	5										
Sociology	5	4	2	6	4	1	1				
Upper Division	2	2	2	6	4	1	1				
Graduate Level	3	2									
Spanish	4	2	3	5	4	1				1	3
Upper Division	1	2	3	5	4	1				1	3
Graduate Level	3										
Trades & Industries	4	9	9	8	1	3	3	2	1	1	
Upper Division	2	6	6	7	1	3	3	2	1	1	
Graduate Level	2	3	3	1							
Vocational Agriculture		2	3								
Upper Division		1	2								
Graduate Level		1	1								
Vocational Home Economics	3	9	9	13	6	5	6	6	4	4	5
Upper Division	2	1	3	11	6	5	6	6	4	4	5
Graduate Level	1	8	6	2							

Table 2 (cont.)

MAJOR	FALL SEMESTER										
	1993	1994	1995	1996	1997	1998	1999	2000	2001	2002	2003
Secondary Education	64	80	60	81	77	79	63	60	56	28	15
Graduate Level (MEd) 32/	64	80	60	81	77	79	63	60	56	28	15
Kinesiology & Leisure Sci	22	22	25	29	31	23	40	62	71	73	74
Lower Division				1							2
Upper Division	22	22	25	28	31	23	18	20	21	33	25
Graduate Level							22	42	50	40	47
Kinesiology & Leisure Sci 40/							22	42	50	40	47
Graduate Level (MS)							22	42	50	40	47
KLS, Athletic Training (BS) 41/	8	7	10	11	10	7	3	1	6	7	4
Lower Division											1
Upper Division	8	7	10	11	10	7	3	1	6	7	3
KLS, Health / Ex Sci & Life Mgt (BS) 42/ ..	8	8	10	12	14	7	14	15	13	19	17
Lower Division				1							1
Upper Division	8	8	10	11	14	7	14	15	13	19	16
KLS, Physical Education (BS)	1	1	1		1	1		1		2	3
Upper Division	1	1	1		1	1		1		2	3
KLS, Recreation & Leisure Sci (BS)	5	6	4	6	6	8	1	3	2	5	3
Upper Division	5	6	4	6	6	8	1	3	2	5	3
Elementary or Secondary Ed (PDE) 43/							16	1	2		
Graduate Level							16	1	2		
Special Education	73	76	69	81	74	64	102	85	73	52	70
Upper Division (BEd) 44/		1									
Graduate Level (MEd)	64	62	61	75	70	64	98	85	73	51	70
Graduate Level (PD) 36/	9	13	8	6	4						
Graduate Level (PB) 39/							4			1	
COLLEGE OF ENGINEERING	1,085	1,081	958	897	832	772	729	705	716	781	879
Lower Division	326	292	264	251	265	241	217	217	223	269	373
Upper Division	576	585	499	474	408	373	348	340	355	362	351
Graduate Level	183	204	195	172	159	158	164	148	138	150	155
Civil Engineering	483	497	447	410	357	300	248	241	231	245	268
Lower Division (BS)	154	145	119	97	99	91	77	60	57	66	107
Upper Division (BS)	278	286	258	245	195	153	116	119	115	112	100
Graduate Level (MS)	47	60	66	63	53	48	47	51	49	56	50
Graduate Level (PhD)	4	6	4	4	8	8	8	9	10	9	11
Graduate Level (Other)				1	2			2		2	

Table 2 (cont.)

MAJOR	FALL SEMESTER										
	1993	1994	1995	1996	1997	1998	1999	2000	2001	2002	2003
Electrical Engineering	392	393	351	343	338	341	360	350	361	374	409
Lower Division (BS)	100	95	97	115	119	104	101	126	122	132	158
Upper Division (BS)	195	190	154	149	145	159	174	153	174	177	181
Graduate Level (MS)	69	69	74	62	56	61	63	51	49	51	48
Graduate Level (PhD)	28	39	26	17	18	17	22	20	16	14	22
Mechanical Engineering	210	191	160	144	137	131	121	114	124	162	202
Lower Division (BS)	72	52	48	39	47	46	39	31	44	71	108
Upper Division (BS)	103	109	87	80	68	61	58	68	66	73	70
Graduate Level (MS)	24	21	18	19	13	15	14	6	7	10	14
Graduate Level (PhD)	11	9	7	6	9	9	10	9	7	8	10
COLL OF TROP AG & HUMAN RES 45/	589	624	601	594	616	593	607	614	579	594	671
Lower Division	79	76	76	81	81	86	98	89	91	122	187
Upper Division	299	335	343	355	400	381	390	389	341	314	309
Graduate Level	211	213	182	158	135	126	119	136	147	158	175
Family and Consumer Sciences	199	195	210	224	249	239	246	243	229	242	269
Lower Division	33	20	22	23	23	26	35	33	42	58	87
Upper Division	166	175	188	201	226	213	211	210	187	184	182
Apparel Prod Design & Merch (BS) 46/	112	91	91	72	74	81	112	103	117	126	131
Lower Division	26	15	19	15	17	21	30	32	39	55	61
Upper Division	86	76	72	57	57	60	82	71	78	71	70
Family Resources (BS)	87	104	119	152	175	158	134	140	112	116	138
Lower Division	7	5	3	8	6	5	5	1	3	3	26
Upper Division	80	99	116	144	169	153	129	139	109	113	112
Human Nutrition / Food / Animal Sciences .	174	199	184	176	177	186	194	194	174	150	163
Lower Division	37	41	38	41	32	36	40	36	34	36	57
Upper Division	98	123	117	113	125	125	124	123	101	77	70
Graduate Level	39	35	29	22	20	25	30	35	39	37	36
Animal Science (BS, MS).....	40	47	46	51	58	71	76	83	80	57	72
Lower Division	16	14	23	24	19	21	20	19	20	17	32
Upper Division	14	23	13	21	31	38	40	45	39	24	25
Graduate Level	10	10	10	6	8	12	16	19	21	16	15
Food Sci / Human Nutrition (BS)	105	127	119	109	107	102	104	95	76	72	70
Lower Division	21	27	15	17	13	15	20	17	14	19	25
Upper Division	84	100	104	92	94	87	84	78	62	53	45
Food Science & Technology (MS)	21	19	12	7	3	2	4	5	5	5	5
Graduate Level	21	19	12	7	3	2	4	5	5	5	5
Nutritional Sciences (MS)	8	6	7	9	9	11	10	11	13	16	16
Graduate Level	8	6	7	9	9	11	10	11	13	16	16

Table 2 (cont.)

MAJOR	FALL SEMESTER										
	1993	1994	1995	1996	1997	1998	1999	2000	2001	2002	2003
Molecular Biosci & Biosystems Eng	34	47	42	53	54	51	43	53	50	64	79
Lower Division		1	2	8	13	11	8	8	4	6	16
Upper Division	5	9	8	12	12	14	12	9	10	9	11
Graduate Level	29	37	32	33	29	26	23	36	36	49	52
Bioengineering (BS, MS) 47/	25	34	32	42	43	41	31	33	29	30	40
Lower Division		1	2	8	13	11	8	8	4	6	16
Upper Division	5	9	8	12	12	14	12	9	10	9	11
Graduate Level	20	24	22	22	18	16	11	16	15	15	13
Agricultural Engineering 48/	20										
Graduate Level (MS)	20										
Mechanized Ag Prod (BS) 48/	5										
Upper Division	5										
Molecular Biosci & Bioeng 49/	9	13	10	11	11	10	12	20	21	34	39
Graduate Level (MS)	1	2	3	1	1	1	2	4	6	13	15
Graduate Level (PhD)	8	11	7	10	10	9	10	16	15	21	24
Natural Resource & Environ Mgt	30	36	31	24	19	21	17	18	17	26	48
Lower Division	1	1	2		1	3	1	1	3	5	11
Upper Division	1	3	3		2	2	4	4	2	6	12
Graduate Level	28	32	26	24	16	16	12	13	12	15	25
Agricultural Resource & Econ 50/	30	36	31	24	19	21	17	18	16	12	5
Lower Division (BS)	1	1	2		1	3	1	1	2	2	
Upper Division (BS)	1	3	3		2	2	4	4	2	1	1
Graduate Level (MS)	10	11	9	7	6	4	3	2	2	1	
Graduate Level (PhD)	18	21	17	17	10	12	9	11	10	8	4
Nat Res & Env Mgt 51/									1	14	43
Lower Division (BS)									1	3	11
Upper Division (BS)										5	11
Graduate Level (MS)										5	16
Graduate Level (PhD)										1	5
General Agriculture (BS)	11	15	15	9	18	13	14	10	5	1	
Lower Division	5	7	6	1	5	3	4	2	3		
Upper Division	6	8	9	8	13	10	10	8	2	1	
Plant & Environ Biotech (BS) 52/									1	9	12
Lower Division										5	6
Upper Division									1	4	6

Table 2 (cont.)

MAJOR	FALL SEMESTER										
	1993	1994	1995	1996	1997	1998	1999	2000	2001	2002	2003
Plant & Environ Protection Sciences	34	29	29	24	26	20	22	22	27	29	29
Lower Division					1	1			1	2	1
Upper Division	2	1	1	1	1			1	1	6	6
Graduate Level	32	28	28	23	24	19	22	21	25	21	22
Entomology	16	15	18	13	13	10	13	8	11	8	13
Graduate Level (MS)	4	5	5	3	5	4	6	3	6	4	6
Graduate Level (PhD)	12	10	13	10	8	6	7	5	5	4	7
Plant & Environ Protection (BS) 53/	2	1	1	1	2	1		1	2	8	7
Lower Division					1	1			1	2	1
Upper Division	2	1	1	1	1			1	1	6	6
Tropical Plant Pathology 54/	16	13	10	10	11	9	9	13	14	13	9
Graduate Level (MS)	4	4	3	3	2	3	4	7	6	5	1
Graduate Level (PhD)	12	9	7	7	9	6	5	6	8	8	8
Tropical Plant & Soil Sciences	107	103	90	84	73	63	71	74	76	73	71
Lower Division	3	6	6	8	6	6	10	9	4	10	9
Upper Division	21	16	17	20	21	17	29	34	37	27	22
Graduate Level	83	81	67	56	46	40	32	31	35	36	40
Agronomy & Soil Science 55/	57	53	47	36	27	19	21	20	14	13	6
Lower Division (BS)		1	2	2	1			3		2	
Upper Division (BS)	4	3	4	3	4	2	6	4	3	2	1
Graduate Level (MS)	21	19	16	13	9	7	6	5	4	5	3
Graduate Level (PhD)	32	30	25	18	13	10	9	8	7	4	2
Horticulture	47	49	42	48	46	44	50	54	62	40	22
Lower Division (BS)	3	5	4	6	5	6	10	6	4	3	2
Upper Division (BS)	14	12	12	17	17	15	23	30	34	20	7
Graduate Level (MS)	12	12	9	11	12	12	12	11	13	6	2
Graduate Level (PhD)	18	20	17	14	12	11	5	7	11	11	11
Horticulture Technology (BS)	3	1	1								
Upper Division	3	1	1								
Tropical Plant & Soil Sci 56/										20	43
Lower Division (BS)										5	7
Upper Division (BS)										5	14
Graduate Level (MS)										8	14
Graduate Level (PhD)										2	8
SCHOOL OF MEDICINE 57/	721	755	727	667	612	576	549	475	493	499	464
Lower Division								1	1	2	5
Upper Division	60	55	55	58	51	42	55	55	51	58	54
Graduate Level	661	700	672	609	561	534	494	419	441	439	405

Table 2 (cont.)

MAJOR	FALL SEMESTER										
	1993	1994	1995	1996	1997	1998	1999	2000	2001	2002	2003
Allied Medical Sciences	84	91	81	94	93	77	96	118	134	145	119
Lower Division								1	1	2	5
Upper Division	60	55	55	58	51	42	55	55	51	58	54
Graduate Level	24	36	26	36	42	35	41	62	82	85	60
Medical Technology (BS)	34	33	31	34	24	17	18	11	9	10	13
Lower Division											1
Upper Division	34	33	31	34	24	17	18	11	9	10	12
Speech Pathology & Audiology	50	58	50	60	69	60	78	107	125	135	106
Lower Division (BS)								1	1	2	4
Upper Division (BS)	26	22	24	24	27	25	37	44	42	48	42
Graduate Level (MS)	24	36	26	36	42	35	41	62	82	85	60
Anatomy & Reproductive Biology 58/	9	8	6	6	4	3	1				
Graduate Level (PhD)	9	8	6	6	4	3	1				
Biochemistry & Biophysics	22	19	14	14	12	9	6	5	3	2	2
Graduate Level	22	19	14	14	12	9	6	5	3	2	2
Biochemistry	21	17	12	12	11	9	6	5	3	2	2
Graduate Level (MS)	4	2	3	3	3						
Graduate Level (PhD)	16	15	9	9	8	9	6	5	3	2	2
Graduate Level (Other)	1										
Biophysics	1	2	2	2	1						
Graduate Level (MS)		1	1								
Graduate Level (PhD)	1	1	1	2	1						
Biomedical Science 59/	9	13	16	26	34	34	38	22	17	5	1
Graduate Level (MS)			1	4	12	14	15	3	2	1	
Graduate Level (PhD)	9	13	15	22	22	20	23	19	15	4	1
Cell & Molecular Biology 58/								14	21	30	28
Graduate Level (MS)								10	10	9	3
Graduate Level (PhD)								4	11	21	25
Genetics 58/	26	24	22	17	18	20	14	6	4	3	1
Graduate Level (MS)	8	2	4	4	2	3	3	1	1		
Graduate Level (PhD)	18	22	18	13	16	17	11	5	3	3	1
Medicine (MD)	233	224	223	228	224	225	226	235	244	250	259
First-Professional	233	224	223	228	224	225	226	235	244	250	259
Pharmacology	11	7	8	6	6	2	2	2	2	2	
Graduate Level (MS)	5	1	1	1	1						
Graduate Level (PhD)	6	6	7	5	5	2	2	2	2	2	

Table 2 (cont.)

MAJOR	FALL SEMESTER										
	1993	1994	1995	1996	1997	1998	1999	2000	2001	2002	2003
Physiology	26	28	20	18	16	20	19	23	28	21	19
Graduate Level (MS)	16	16	12	11	5	11	7	14	18	13	12
Graduate Level (PhD)	10	12	8	7	11	9	12	9	10	8	7
Public Health Sci & Epidemiology 57/.....	295	334	332	253	203	182	143	42	34	36	29
Graduate Level	295	334	332	253	203	182	143	42	34	36	29
Biostatistics-Epidemiology (PhD) 60/	17	16	13	13	10	7	5	2	1		1
Graduate Level	17	16	13	13	10	7	5	2	1		1
Public Health (MS)	18	19	15	13	11	11	11	4	5	5	
Graduate Level	18	19	15	13	11	11	11	4	5	5	
Public Health	227	266	265	199	154	137	108	29	23	27	25
Graduate Level (MPH)	224	262	263	198	154	136	108	29	23	27	25
Graduate Level (Other)	3	4	2	1		1					
Public Health	33	33	39	28	28	27	19	7	5	4	3
Graduate Level (DrPH)	33	33	39	28	28	27	19	7	5	4	3
Tropical Medicine	6	7	5	5	2	4	4	8	6	5	6
Graduate Level (MS)	3	4	2	2		2	3	4	3	1	4
Graduate Level (PhD)	3	3	3	3	2	2	1	4	3	4	2
SCH OF NURSING & DENTAL HYG 61/.....	398	394	370	337	312	298	326	348	363	428	451
Lower Division	14	15	13	5	5	2	5	6	13	24	35
Upper Division	279	267	260	239	233	219	233	263	267	316	324
Graduate Level	105	112	97	93	74	77	88	79	83	88	92
Dental Hygiene (Cert,BS) 62/	48	59	61	51	49	54	61	66	62	74	67
Lower Division	8	13	12	4		1	2	4	7	13	14
Upper Division	40	46	49	47	49	53	59	62	55	61	53
Nursing (BS)	155	158	159	158	161	151	166	189	206	232	232
Lower Division	5	2		1	4	1	3	1	5	7	14
Upper Division	150	156	159	157	157	150	163	188	201	225	218
Professional Nursing 63/	195	177	150	128	102	93	99	93	95	122	152
Lower Division (BS)	1		1		1			1	1	4	7
Upper Division (BS)	89	65	52	35	27	16	11	13	11	30	53
Graduate Level (MS)	104	109	93	86	67	60	64	54	57	59	69
Graduate Level (PhD)						7	12	18	22	27	22
Graduate Level (Other)	1	3	4	7	7	10	12	7	4	2	1
SCHOOL OF SOCIAL WORK	248	279	308	297	266	262	284	262	242	283	260
Lower Division	1				1	1				4	3
Upper Division	51	55	56	63	58	51	44	40	39	36	13
Graduate Level	196	224	252	234	207	210	240	222	203	243	244

Table 2 (cont.)

MAJOR	FALL SEMESTER										
	1993	1994	1995	1996	1997	1998	1999	2000	2001	2002	2003
Social Work	248	279	308	297	266	262	284	262	242	283	260
Lower Division (BSW)	1				1	1				4	3
Upper Division (BSW)	51	55	56	63	58	51	44	40	39	36	13
Graduate Level (MSW)	181	209	233	221	190	195	226	211	190	227	229
Graduate Level (PhD)	15	15	19	13	17	15	14	11	13	16	15
SCHOOL OF LAW	238	238	241	240	236	245	242	242	242	265	311
Graduate Level (Classified)	226	226	230	228	224	233	233	230	230	253	300
Graduate Unclassified	12	12	11	12	12	12	9	12	12	12	11
Law (JD)	226	226	230	228	224	233	233	230	230	253	296
First-Professional	226	226	230	228	224	233	233	230	230	253	296
Master in Law for Foreign Prof (LLM) 64/ ... Graduate Level											4 4
Law, Non-Degree (Unclassified)									1	1	11
Graduate Level									1	1	11
Pre-Admission to Law (Unclassified)	12	12	11	12	12	12	9	12	11	11	
Graduate Level	12	12	11	12	12	12	9	12	11	11	
UNCLASSIFIED	1,683	1,569	1,489	1,217	1,048	990	1,396	1,531	1,465	1,598	1,154
Undergraduate Level	401	364	331	299	247	291	473	568	535	568	223
Graduate Level	1,282	1,205	1,158	918	801	699	923	963	930	1,030	931
Regular Unclassified	1,633	1,512	1,446	1,197	1,036	973	1,392	1,524	1,459	1,585	1,149
Undergraduate Level	366	322	309	279	235	274	469	561	529	555	218
Graduate Level	1,267	1,190	1,137	918	801	699	923	963	930	1,030	931
Regular Unclassified	1,633	1,512	1,446	1,197	1,036	973	1,052	1,071	1,041	1,583	1,149
Undergraduate Level	366	322	309	279	235	274	365	420	368	553	218
Graduate Level	1,267	1,190	1,137	918	801	699	687	651	673	1,030	931
Outreach College Unclassified							340	453	418	2	
Undergraduate Level							104	141	161	2	
Graduate Level							236	312	257		
Specials	50	57	43	20	12	17	4	7	6	13	5
Undergraduate Level	35	42	22	20	12	17	4	7	6	13	5
Graduate Level	15	15	21								
Concurrents	11	10	2			1	1				
Undergraduate Level	11	10	2			1	1				
Early Admits	10	16	9	11	3	7	3	7	6	3	4
Undergraduate Level	10	16	9	11	3	7	3	7	6	3	4

Table 2 (cont.)

MAJOR	FALL SEMESTER										
	1993	1994	1995	1996	1997	1998	1999	2000	2001	2002	2003
Auditors	29	31	32	9	9	9				10	1
Undergraduate Level	14	16	11	9	9	9				10	1
Graduate Level	15	15	21								
NO DATA 65/	61	39	31	18	9	3	8	2	34	20	462

- 1/ Certain programs have moved in or out of the College of Arts and Sciences over the years. Totals by department and for the College of Arts and Sciences have been recalculated from time to time and therefore may not tie to earlier reports.
- 2/ Program consolidated with "Dance," effective Fall 1991.
- 3/ Program designation no longer in use.
- 4/ Department formerly called "English as a Second Language;" change effective July 2000; degrees unchanged.
- 5/ Advanced Graduate Certificate in Second Language Studies approved by the Vice Chancellor in Fall 2000.
- 6/ Totals for Natural Sciences reflect removal of Bot Sci-Plant Pathology / Physiology in Fall 1993 and addition of Library and Info Studies in Fall 1997.
- 7/ Graduate degree programs formerly called "Botanical Sciences (Botany);" name change effective Fall 2001.
- 8/ Library and Info Studies merged with the Department of Information and Computer Sciences, effective Fall 1997. Totals for prior years have been recalculated.
- 9/ PhD program in Computer Science approved by the UH Board of Regents in February 1997, effective Fall 1997.
- 10/ BA degree program in Information and Computer Science approved by the UH Board of Regents in February 1998, effective Fall 1998.
- 11/ Name changed from "Library and Info Studies" to "Library and Info Science," and Master's degree changed from MLIS to MLISC, effective Spring 1998.
- 12/ BS program in Marine Biology approved by the UH Board of Regents in July 2002, effective Fall 2002.
- 13/ School of Communications consolidates the Dept. of Communication and the Dept. of Journalism; established by the UH Board of Regents in June 2000.
- 14/ Program administered by the Spark M. Matsunaga Institute for Peace in the College of Social Sciences; approved by the UH Manoa Chancellor in May 2002.
- 15/ Program in Ethnic Studies approved by the UH Board of Regents in January 1995, effective Spring 1995.
- 16/ Interdisciplinary program offered by UH Manoa and the East-West Center; approved by the UH Board of Regents in June 1999, effective Fall 1999.
- 17/ PhD program approved by the UH Board of Regents in October 2001, effective Fall 2002.
- 18/ Interdisciplinary PhD program offered by the School of Communications and the College of Business Administration.
- 19/ Formerly known as "Pre-Health, Physical Education and Recreation;" name change effective Spring 1997.
- 20/ Graduate certificate terminated in March 2003.
- 21/ Formerly called "Ocean Engineering;" name change effective Spring 2000.
- 22/ Program approved by the UH Board of Regents in October 1997, effective Fall 1998. Program granted established status in March 2002.
- 23/ Graduate Certificate program established in December 1996. Program terminated by the UH Manoa Chancellor in February 2002, effective Fall 2002.
- 24/ BArch and MArch programs replaced by the ArchD program, effective Fall 1999.
- 25/ First-Professional program in Architecture (ArchD) approved by the UH Board of Regents in February 1999, effective Fall 1999. Incoming students are undergraduate level until portfolio review at end of fourth year. Students may then continue as graduate First-Professional or exit with a BA in Liberal Studies.
- 26/ Bus Econ and Quant Methods terminated by UH Board of Regents in October 1999, effective Spring 2000.
- 27/ PhD program approved by the UH Board of Regents, effective Fall 1997. Program placed on two-year stop-out, beginning Fall 2001. Stopout removed, effective Fall 2003.
- 28/ Program in International Business moved from "Fin Econ & Inst" to "Mgt & Ind Relations," effective Fall 1997. Totals for prior years have been recalculated.
- 29/ Masters in Human Resource Management approved by the UH Board of Regents in September 2000, effective Spring 2001.
- 30/ Graduate degree changed from MPS to MS by action of the Vice Chancellor in April 1999, effective Spring 1999.
- 31/ BS degree program in Travel Industry Management approved by the UH Board of Regents in September 1990, effective Fall 1991 (replaces BBA).
- 32/ Program consolidates MEd programs in Elementary Education and Secondary Education; approved by the UH Manoa Chancellor in January 2002, effective Fall 2002.
- 33/ Breakout by specialization for Education PhD candidates no longer available, beginning Fall 1999. EdD degree designation no longer in use.
- 34/ MEd program in Early Childhood Education approved by the UH Board of Regents in March 2002, effective Fall 2002.
- 35/ PhD program includes specializations in Curriculum and Instruction, Ed Administration and Ed Foundations. Itemized data by specialization for Education PhD candidates no longer available. Change of EdD degree to PhD approved by the UH Board of Regents in February 1999.

Table 2 (cont.)

MAJOR	FALL SEMESTER										
	1993	1994	1995	1996	1997	1998	1999	2000	2001	2002	2003

- 36/ Professional Diploma program stop-out, Academic Year 1994-95 to 1996-97. Program redesigned and renamed Professional Diploma in Education. Stop-out removed, effective Fall 1997. (Data for PDE are listed separately.)
- 37/ Elementary and Special Education program provides dual preparation for Elementary and Special Education; graduates are trained to do either.
- 38/ Elementary Education, Special Ed is a program of concentration within the Elementary Education BEd program.
- 39/ Post-Baccalaureate Certificate in Education approved by the UH Board of Regents in June 1996, effective Fall 1996. Provides training to non-education majors leading to teacher certification. Currently offered in secondary ed and special ed only. Program granted established status by the UH Board of Regents in January 2002.
- 40/ MS degree in Kinesiology and Leisure Science approved by the UH Board of Regents in January 1999, effective Fall 1999.
- 41/ BS specialization in Athletic Training placed on stopout for the 2003-05 academic years in December 2003.
- 42/ Formerly called "Health / Exercise Science;" name change effective Fall 2002.
- 43/ Professional Diploma in Education program provides professional development for practicing teachers.
- 44/ BEd program in Special Education terminated, effective Fall 1999.
- 45/ Departmental breakout for the College of Tropical Ag & Human Resources reorganized in 1999-2000.
- 46/ Formerly called "Fashion Design and Merchandising;" name change effective Fall 2001.
- 47/ Formerly called "Biosystems Engineering;" name change effective Fall 2001. Combined programs in "Ag Engineering" and "Mechanized Ag Production," effective Fall 1993.
- 48/ Program incorporated into "Biosystems Engineering," effective Fall 1993.
- 49/ Name changed from "Botanical Sciences-Plant Physiology," effective Fall 2001. Program moved from College of Arts & Sciences in Fall 1993.
- 50/ BS program replaced by Natural Resources & Environmental Management. MS & PhD programs renamed Nat Res & Env Mgt. Currently enrolled students allowed to complete.
- 51/ BS program granted provisional status by the UH Board of Regents in June 2001, effective Fall 2001. MS and PhD programs consolidate the resource management focus of the program in Agriculture & Resource Economics and the agricultural and environmental systems component of Agronomy & Soil Science, effective Fall 2002.
- 52/ BS program in Plant & Env Protection Science approved by the UH Board of Regents, effective Fall 2001. Interdepartmental program replaces the BS in General Agriculture.
- 53/ BS program formerly called "Entomology;" name change effective Fall 2001.
- 54/ Formerly called "Plant Pathology;" name change effective Spring 2003. Also formerly called "Botanical Sciences-Plant Pathology." Program moved from College of Arts & Sciences in Fall 1993.
- 55/ Agronomy & Soil Science and Horticulture programs replaced by Tropical Plant & Soil Sciences; certain components of the BS program in Ag & Soil Science incorporated into Nat Resource & Env Mgt.
- 56/ BS program granted provisional status by the UH Board of Regents in June 2001, effective Fall 2001. MS and PhD programs consolidate Horticulture and most of the program in Agronomy & Soil Science, effective Fall 2002. Graduate specialization in Horticulture offered within degree in Tropical Plant and Soil Sciences (Horticulture).
- 57/ School of Public Health merged with School of Medicine by action of the UH Board of Regents, July 2000. Totals for prior years adjusted to include Public Health.
- 58/ "Cell & Molecular Biology" subfield within Biomedical Sciences replaces "Anatomy & Reproductive Biology" and "Genetics," effective Fall 1999. Currently enrolled students allowed to complete through 2005.
- 59/ Comprehensive Biomedical Sciences program includes specializations in Biochemistry, Biophysics, Biostatistics-Epidemiology, Cell & Molecular Biology, Pharmacology, Physiology and Tropical Medicine.
- 60/ Program stop-out in April 1999; stop-out removed, effective September 2000.
- 61/ Formerly called "School of Nursing;" name change effective July 2000.
- 62/ Undergraduate Certificate program in Dental Hygiene terminated by the UH Board of Regents in October 1997, effective Spring 1998.
- 63/ PhD program in Nursing approved by the UH Board of Regents in June 1998, effective Fall 1998.
- 64/ Master in Law for Foreign Professionals approved by the UH Board of Regents in October 2002, effective Fall 2003.
- 65/ Large increase in records with invalid coding for major associated with migration to a new student registration system in Fall 2003.
- SOURCES: Computer Report R1423A; Minutes of the Meetings of the UH Board of Regents; Program memoranda.

TABLE 3
HEADCOUNT ENROLLMENT OF CREDIT STUDENTS, BY DEGREE OBJECTIVE
UNIVERSITY OF HAWAI'I AT MANOA
FALL 1993 TO FALL 2003

DEGREE OBJECTIVE	FALL SEMESTER										
	1993	1994	1995	1996	1997	1998	1999	2000	2001	2002	2003
TOTAL	20,090	20,041	19,801	18,252	17,365	17,013	17,612	17,263	17,532	18,706	19,863
Undergraduate Level 1/	12,991	12,903	13,050	12,216	11,782	11,500	11,458	11,151	11,485	12,242	13,069
Graduate Level	5,343	5,518	5,220	4,789	4,514	4,508	4,741	4,567	4,536	4,834	5,167
Unclassified	1,695	1,581	1,500	1,229	1,060	1,002	1,405	1,543	1,477	1,610	1,165
No Data	61	39	31	18	9	3	8	2	34	20	462
Cert of Achievement	5	9	9	4	2						
CA (Dental Hygiene) 2/	5	9	9	4	2						
Baccalaureate Level	12,986	12,894	13,041	12,212	11,780	11,500	11,458	11,151	11,485	12,242	13,069
BA 3/	8,100	8,146	8,402	7,780	7,483	7,330	7,282	7,083	7,317	7,744	8,484
BArch 4/	172	197	222	249	233	227	195	134	89	42	19
BBA	1,200	1,035	916	833	826	849	841	796	784	877	891
BEd	583	571	608	626	486	389	378	350	404	419	346
BFA	243	227	182	125	88	60	43	32	27	44	46
BMus	20	17	15	13	16	16	23	17	13	13	28
BS	2,616	2,646	2,640	2,523	2,589	2,577	2,652	2,699	2,812	3,063	3,239
BSW	52	55	56	63	59	52	44	40	39	40	16
Masters Level	2,975	3,115	3,054	2,934	2,704	2,697	2,844	2,765	2,752	2,922	3,068
LLM 5/											4
MA	766	771	754	800	767	749	680	681	679	726	758
MAcc	28	41	35	25	21	29	37	40	55	95	109
MArch 4/	20	18	20	26	24	30	27	19	12	4	
MBA	298	304	292	242	215	228	341	353	353	325	329
MEd	469	511	501	510	490	491	525	506	486	513	542
MEdT	33	38	50	54	40	44	45	49	51	57	53
MFA	70	69	66	64	67	63	59	58	64	58	59
MHRM 6/											27
MLISC 7/	141	117	104	87	77	59	85	91	84	107	124
MMus	7	10	10	9	10	5	5	4	4	5	9
MPA	55	57	47	52	44	46	50	43	38	48	48
MPH	224	262	263	198	154	136	108	29	23	27	25
MPS 8/	15	16	16	18	18	19					
MS	608	626	596	566	531	546	606	624	659	677	688
MSW	181	209	233	221	190	195	226	211	190	227	229
MURP	60	66	67	62	56	57	50	57	54	53	64

Table 3 (cont.)

DEGREE OBJECTIVE	FALL SEMESTER										
	1993	1994	1995	1996	1997	1998	1999	2000	2001	2002	2003
Doctorate Level	1,404	1,425	1,372	1,275	1,271	1,234	1,217	1,179	1,191	1,264	1,312
DrPH	33	33	39	28	28	27	19	7	5	4	3
EdD 9/	70	69	76	86	89	100					
PhD	1,301	1,323	1,257	1,161	1,154	1,107	1,198	1,172	1,186	1,260	1,309
First Professional Level	459	450	453	456	448	458	476	485	500	535	613
ArchD (Architecture) 10/							17	20	26	32	58
JD (Law) 11/	226	226	230	228	224	233	233	230	230	253	296
MD (Medicine)	233	224	223	228	224	225	226	235	244	250	259
Graduate Level Other	505	528	341	124	91	119	204	138	93	113	174
Graduate Special / GCert 12/	63	67	69	44	43	58	53	48	30	27	43
Profess Diploma (Educ) 13/	442	461	272	80	8	2					
Profess Diploma in Educ (PDE) 14/							16	1	2		
Post Baccalaureate (Educ) 15/					40	59	135	89	61	86	131
Unclassified	1,695	1,581	1,500	1,229	1,060	1,002	1,405	1,543	1,477	1,610	1,165
Undergraduate	401	364	331	299	247	291	473	568	535	568	223
Graduate 16/	1,294	1,217	1,169	930	813	711	932	975	942	1,042	942
No Data	61	39	31	18	9	3	8	2	34	20	462

1/ Includes Associate Degree, Certificate of Achievement and Baccalaureate Degree.

2/ Undergraduate Certificate program in Dental Hygiene terminated by the UH Board of Regents, effective Spring 1998.

3/ Includes undergraduate students in the ArchD program in School of Architecture.

4/ BArch and MArch degrees replaced by ArchD program in Fall 1999. Incoming students are undergraduate until portfolio review at end of fourth year. Students may then continue as graduate First-Professional or exit with BA in Liberal Studies.

5/ Master in Law for Foreign Professionals approved by the UH Board of Regents in October 2002, effective Fall 2003.

6/ Masters in Human Resource Management approved by the UH Board of Regents in September 2000, effective Spring 2001.

7/ Degree name changed from "Library and Info Studies" (MLIS) to "Library and Info Science" (MLISC), effective Spring 1998.

8/ MPS degree in Travel Industry Management changed to MS degree, effective Spring 1999.

9/ EdD degree programs changed to PhD, effective February, 1999.

10/ First-professional degree in Architecture (ArchD) approved by the UH Board of Regents, effective Fall 1999.

11/ Excludes pre-admitted and non-degree students (unclassified graduates).

12/ Students admitted to a course of study not leading to an advanced degree; includes Graduate Certificates.

13/ Professional Diploma program stop-out, AY 1994-95 to 1996-97. Program redesigned and renamed Professional Diploma in Education. Stop-out removed, effective Fall 1997.

14/ Professional Diploma in Education program provides professional development for practicing teachers.

15/ Post-Baccalaureate Certificate in Education approved by the UH Board of Regents, effective Fall 1996. Program provides training to non-education majors leading to teacher certification. Currently offered in secondary education and special education only.

16/ Includes Law pre-admitted and non-degree students (unclassified graduates).

SOURCES: Computer Reports 1401A, 1423A and 1423D.